



# Full wwPDB X-ray Structure Validation Report ⓘ

May 8, 2024 – 04:04 PM EDT

PDB ID : 8SVR  
Title : Crystal structure of pregnane X receptor ligand binding domain in complex with SJPYT-326  
Authors : Garcia-Maldonado, E.; Huber, A.D.; Nithianantham, S.; Miller, D.J.; Chen, T.  
Deposited on : 2023-05-17  
Resolution : 2.92 Å(reported)

This is a Full wwPDB X-ray Structure Validation Report for a publicly released PDB entry.

We welcome your comments at [validation@mail.wwpdb.org](mailto:validation@mail.wwpdb.org)

A user guide is available at

<https://www.wwpdb.org/validation/2017/XrayValidationReportHelp>

with specific help available everywhere you see the ⓘ symbol.

The types of validation reports are described at

<http://www.wwpdb.org/validation/2017/FAQs#types>.

---

The following versions of software and data (see [references ⓘ](#)) were used in the production of this report:

MolProbity : 4.02b-467  
Mogul : 1.8.5 (274361), CSD as541be (2020)  
Xtriage (Phenix) : 1.13  
EDS : 2.36.2  
buster-report : 1.1.7 (2018)  
Percentile statistics : 20191225.v01 (using entries in the PDB archive December 25th 2019)  
Refmac : 5.8.0158  
CCP4 : 7.0.044 (Gargrove)  
Ideal geometry (proteins) : Engh & Huber (2001)  
Ideal geometry (DNA, RNA) : Parkinson et al. (1996)  
Validation Pipeline (wwPDB-VP) : 2.36.2

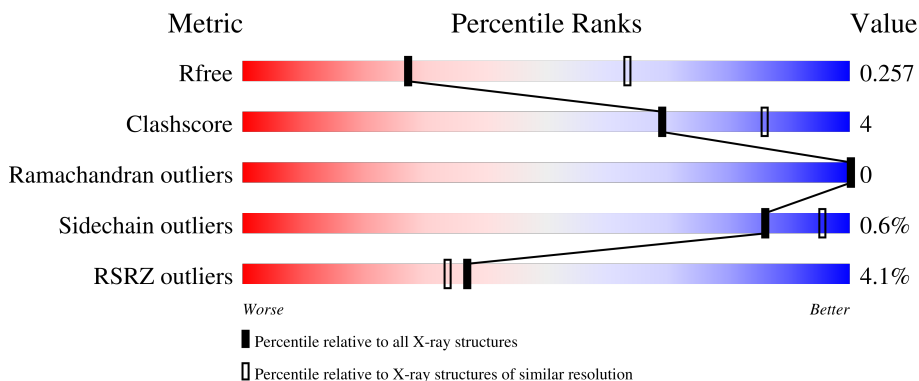
# 1 Overall quality at a glance

The following experimental techniques were used to determine the structure:

*X-RAY DIFFRACTION*

The reported resolution of this entry is 2.92 Å.

Percentile scores (ranging between 0-100) for global validation metrics of the entry are shown in the following graphic. The table shows the number of entries on which the scores are based.



Metric	Whole archive (#Entries)	Similar resolution (#Entries, resolution range(Å))
$R_{free}$	130704	2307 (2.94-2.90)
Clashscore	141614	2531 (2.94-2.90)
Ramachandran outliers	138981	2462 (2.94-2.90)
Sidechain outliers	138945	2464 (2.94-2.90)
RSRZ outliers	127900	2248 (2.94-2.90)

The table below summarises the geometric issues observed across the polymeric chains and their fit to the electron density. The red, orange, yellow and green segments of the lower bar indicate the fraction of residues that contain outliers for  $\geq 3$ , 2, 1 and 0 types of geometric quality criteria respectively. A grey segment represents the fraction of residues that are not modelled. The numeric value for each fraction is indicated below the corresponding segment, with a dot representing fractions  $\leq 5\%$ . The upper red bar (where present) indicates the fraction of residues that have poor fit to the electron density. The numeric value is given above the bar.

Mol	Chain	Length	Quality of chain
1	A	351	
1	B	351	

## 2 Entry composition i

There are 4 unique types of molecules in this entry. The entry contains 4519 atoms, of which 0 are hydrogens and 0 are deuteriums.

In the tables below, the ZeroOcc column contains the number of atoms modelled with zero occupancy, the AltConf column contains the number of residues with at least one atom in alternate conformation and the Trace column contains the number of residues modelled with at most 2 atoms.

- Molecule 1 is a protein called Pregnane X receptor ligand binding domain fused to SRC-1 coactivator peptide.

Mol	Chain	Residues	Atoms					ZeroOcc	AltConf	Trace
			Total	C	N	O	S			
1	A	282	Total	C	N	O	S	0	0	0
			2256	1454	386	398	18			
1	B	278	Total	C	N	O	S	0	0	0
			2192	1415	377	383	17			

There are 26 discrepancies between the modelled and reference sequences:

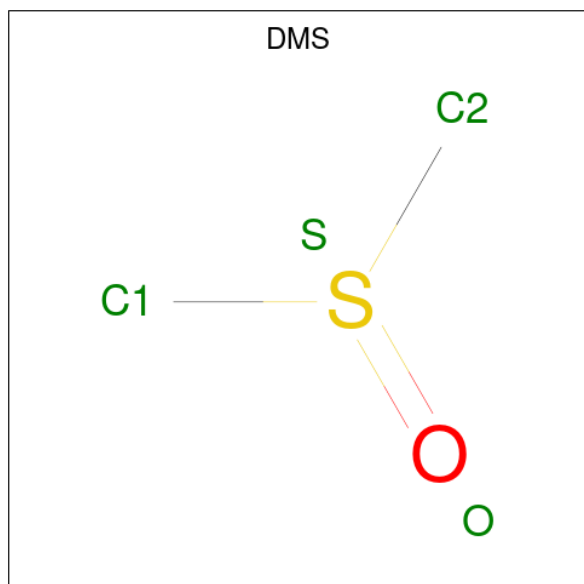
Chain	Residue	Modelled	Actual	Comment	Reference
A	123	HIS	-	expression tag	UNP O75469
A	124	HIS	-	expression tag	UNP O75469
A	125	HIS	-	expression tag	UNP O75469
A	126	HIS	-	expression tag	UNP O75469
A	127	HIS	-	expression tag	UNP O75469
A	128	HIS	-	expression tag	UNP O75469
A	129	GLY	-	expression tag	UNP O75469
A	435	SER	-	linker	UNP O75469
A	436	GLY	-	linker	UNP O75469
A	437	GLY	-	linker	UNP O75469
A	438	SER	-	linker	UNP O75469
A	439	GLY	-	linker	UNP O75469
A	440	GLY	-	linker	UNP O75469
B	123	HIS	-	expression tag	UNP O75469
B	124	HIS	-	expression tag	UNP O75469
B	125	HIS	-	expression tag	UNP O75469
B	126	HIS	-	expression tag	UNP O75469
B	127	HIS	-	expression tag	UNP O75469
B	128	HIS	-	expression tag	UNP O75469
B	129	GLY	-	expression tag	UNP O75469
B	435	SER	-	linker	UNP O75469
B	436	GLY	-	linker	UNP O75469
B	437	GLY	-	linker	UNP O75469
B	438	SER	-	linker	UNP O75469

*Continued on next page...*

Continued from previous page...

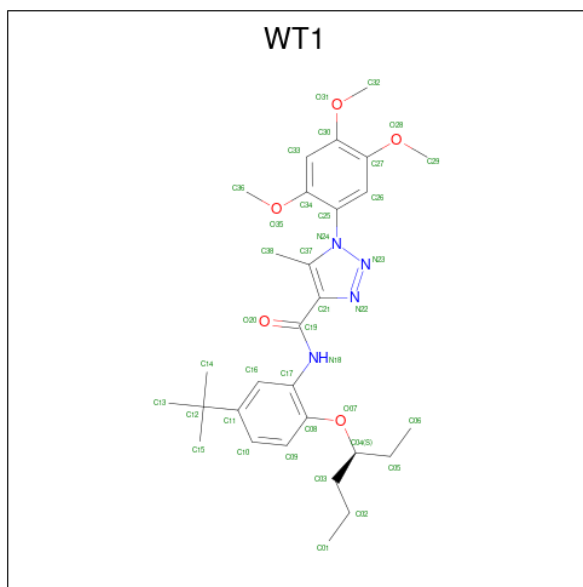
Chain	Residue	Modelled	Actual	Comment	Reference
B	439	GLY	-	linker	UNP O75469
B	440	GLY	-	linker	UNP O75469

- Molecule 2 is DIMETHYL SULFOXIDE (three-letter code: DMS) (formula: C<sub>2</sub>H<sub>6</sub>OS).



Mol	Chain	Residues	Atoms				ZeroOcc	AltConf
			Total	C	O	S		
2	A	1	4	2	1	1	0	0

- Molecule 3 is (1P)-N-(5-tert-butyl-2-{{(3S)-hexan-3-yl}oxy}phenyl)-5-methyl-1-(2,4,5-trimethoxyphenyl)-1H-1,2,3-triazole-4-carboxamide (three-letter code: WT1) (formula: C<sub>29</sub>H<sub>40</sub>N<sub>4</sub>O<sub>5</sub>) (labeled as "Ligand of Interest" by depositor).



Mol	Chain	Residues	Atoms			ZeroOcc	AltConf	
			Total	C	N			O
3	A	1	26	20	4	2	0	0
3	B	1	38	29	4	5	0	0

- Molecule 4 is water.

Mol	Chain	Residues	Atoms		ZeroOcc	AltConf
			Total	O		
4	A	1	1	1	0	0
4	B	2	2	2	0	0



## 4 Data and refinement statistics i

Property	Value	Source
Space group	P 21 21 21	Depositor
Cell constants a, b, c, $\alpha$ , $\beta$ , $\gamma$	84.08Å 88.50Å 105.38Å 90.00° 90.00° 90.00°	Depositor
Resolution (Å)	30.81 – 2.92 30.81 – 2.92	Depositor EDS
% Data completeness (in resolution range)	97.2 (30.81-2.92) 97.2 (30.81-2.92)	Depositor EDS
$R_{merge}$	0.11	Depositor
$R_{sym}$	(Not available)	Depositor
$\langle I/\sigma(I) \rangle$ <sup>1</sup>	1.37 (at 2.90Å)	Xtrriage
Refinement program	PHENIX (1.20.1_4487)	Depositor
R, $R_{free}$	0.224 , 0.258 0.221 , 0.257	Depositor DCC
$R_{free}$ test set	845 reflections (4.92%)	wwPDB-VP
Wilson B-factor (Å <sup>2</sup> )	48.2	Xtrriage
Anisotropy	0.050	Xtrriage
Bulk solvent $k_{sol}$ (e/Å <sup>3</sup> ), $B_{sol}$ (Å <sup>2</sup> )	0.32 , 45.4	EDS
L-test for twinning <sup>2</sup>	$\langle  L  \rangle = 0.48$ , $\langle L^2 \rangle = 0.31$	Xtrriage
Estimated twinning fraction	0.024 for k,h,-l	Xtrriage
$F_o, F_c$ correlation	0.90	EDS
Total number of atoms	4519	wwPDB-VP
Average B, all atoms (Å <sup>2</sup> )	43.0	wwPDB-VP

Xtrriage's analysis on translational NCS is as follows: *The largest off-origin peak in the Patterson function is 3.70% of the height of the origin peak. No significant pseudotranslation is detected.*

<sup>1</sup>Intensities estimated from amplitudes.

<sup>2</sup>Theoretical values of  $\langle |L| \rangle$ ,  $\langle L^2 \rangle$  for acentric reflections are 0.5, 0.333 respectively for untwinned datasets, and 0.375, 0.2 for perfectly twinned datasets.

## 5 Model quality

### 5.1 Standard geometry

Bond lengths and bond angles in the following residue types are not validated in this section: WT1, DMS

The Z score for a bond length (or angle) is the number of standard deviations the observed value is removed from the expected value. A bond length (or angle) with  $|Z| > 5$  is considered an outlier worth inspection. RMSZ is the root-mean-square of all Z scores of the bond lengths (or angles).

Mol	Chain	Bond lengths		Bond angles	
		RMSZ	# Z  >5	RMSZ	# Z  >5
1	A	0.25	0/2304	0.43	0/3108
1	B	0.24	0/2237	0.45	0/3018
All	All	0.25	0/4541	0.44	0/6126

There are no bond length outliers.

There are no bond angle outliers.

There are no chirality outliers.

There are no planarity outliers.

### 5.2 Too-close contacts

In the following table, the Non-H and H(model) columns list the number of non-hydrogen atoms and hydrogen atoms in the chain respectively. The H(added) column lists the number of hydrogen atoms added and optimized by MolProbity. The Clashes column lists the number of clashes within the asymmetric unit, whereas Symm-Clashes lists symmetry-related clashes.

Mol	Chain	Non-H	H(model)	H(added)	Clashes	Symm-Clashes
1	A	2256	0	2225	14	0
1	B	2192	0	2157	20	0
2	A	4	0	6	0	0
3	A	26	0	0	0	0
3	B	38	0	0	0	0
4	A	1	0	0	0	0
4	B	2	0	0	0	0
All	All	4519	0	4388	33	0

The all-atom clashscore is defined as the number of clashes found per 1000 atoms (including hydrogen atoms). The all-atom clashscore for this structure is 4.



All (33) close contacts within the same asymmetric unit are listed below, sorted by their clash magnitude.

Atom-1	Atom-2	Interatomic distance (Å)	Clash overlap (Å)
1:A:229:ALA:O	1:A:230:ASP:HB2	2.00	0.62
1:B:279:ALA:HB1	1:B:283:LEU:HD13	1.83	0.61
1:A:216:ARG:NH2	1:A:305:SER:OG	2.36	0.58
1:B:214:GLN:HB3	1:B:305:SER:HB2	1.88	0.55
1:A:415:GLN:HG2	1:A:431:ILE:HD13	1.90	0.54
1:A:254:ILE:HD12	1:A:283:LEU:HB3	1.90	0.53
1:A:273:ILE:HG23	1:A:453:LEU:HD23	1.91	0.52
1:B:273:ILE:HG23	1:B:453:LEU:HD23	1.91	0.52
1:B:142:GLY:N	1:B:379:CYS:HG	2.08	0.51
1:B:323:MET:HG3	1:B:407:HIS:CE1	2.45	0.51
1:A:221:SER:HB3	1:B:228:PRO:HD3	1.92	0.51
1:B:254:ILE:HD12	1:B:283:LEU:HB3	1.93	0.49
1:A:259:LYS:HD2	1:A:457:LEU:HA	1.93	0.48
1:B:356:VAL:O	1:B:359:HIS:NE2	2.47	0.47
1:B:246:MET:O	1:B:246:MET:HE2	2.13	0.47
1:B:455:ARG:NH1	1:B:459:GLU:OE2	2.47	0.47
1:B:445:SER:O	1:B:449:ARG:HG2	2.15	0.47
1:A:377:ILE:HG23	1:A:381:ARG:HG3	1.97	0.46
1:A:382:PRO:HD2	1:A:386:HIS:CE1	2.50	0.46
1:A:213:LEU:HD11	1:A:304:LEU:HD22	1.98	0.45
1:B:224:ASN:HD21	1:B:226:LYS:HE2	1.83	0.44
1:B:251:PHE:CE2	1:B:255:ILE:HD11	2.53	0.44
1:B:277:LYS:HE2	1:B:277:LYS:HB3	1.92	0.43
1:A:210:LYS:NZ	1:A:227:PRO:HG2	2.33	0.43
1:A:213:LEU:HB3	1:A:225:TYR:HB3	2.00	0.42
1:B:248:THR:HG22	1:B:252:LYS:HE2	2.01	0.42
1:B:149:MET:HG2	1:B:152:ARG:HH21	1.84	0.42
1:B:250:MET:HG3	1:B:288:PHE:CZ	2.55	0.41
1:B:339:GLU:O	1:B:343:MET:HG3	2.20	0.41
1:B:451:LYS:HD2	1:B:451:LYS:HA	1.88	0.41
1:A:349:PHE:O	1:A:366:GLN:HB2	2.20	0.41
1:A:200:SER:O	1:A:204:LYS:HG3	2.21	0.40
1:B:422:THR:OG1	1:B:425:MET:HG3	2.22	0.40

There are no symmetry-related clashes.

## 5.3 Torsion angles [i](#)

### 5.3.1 Protein backbone [i](#)

In the following table, the Percentiles column shows the percent Ramachandran outliers of the chain as a percentile score with respect to all X-ray entries followed by that with respect to entries of similar resolution.

The Analysed column shows the number of residues for which the backbone conformation was analysed, and the total number of residues.

Mol	Chain	Analysed	Favoured	Allowed	Outliers	Percentiles	
1	A	272/351 (78%)	263 (97%)	9 (3%)	0	100	100
1	B	268/351 (76%)	263 (98%)	5 (2%)	0	100	100
All	All	540/702 (77%)	526 (97%)	14 (3%)	0	100	100

There are no Ramachandran outliers to report.

### 5.3.2 Protein sidechains [i](#)

In the following table, the Percentiles column shows the percent sidechain outliers of the chain as a percentile score with respect to all X-ray entries followed by that with respect to entries of similar resolution.

The Analysed column shows the number of residues for which the sidechain conformation was analysed, and the total number of residues.

Mol	Chain	Analysed	Rotameric	Outliers	Percentiles	
1	A	241/310 (78%)	240 (100%)	1 (0%)	91	97
1	B	230/310 (74%)	228 (99%)	2 (1%)	78	92
All	All	471/620 (76%)	468 (99%)	3 (1%)	86	95

All (3) residues with a non-rotameric sidechain are listed below:

Mol	Chain	Res	Type
1	A	162	PHE
1	B	170	LYS
1	B	246	MET

Sometimes sidechains can be flipped to improve hydrogen bonding and reduce clashes. All (6) such sidechains are listed below:

Mol	Chain	Res	Type
1	A	147	GLN
1	A	406	GLN
1	A	458	GLN
1	B	214	GLN
1	B	224	ASN
1	B	407	HIS

### 5.3.3 RNA [i](#)

There are no RNA molecules in this entry.

## 5.4 Non-standard residues in protein, DNA, RNA chains [i](#)

There are no non-standard protein/DNA/RNA residues in this entry.

## 5.5 Carbohydrates [i](#)

There are no monosaccharides in this entry.

## 5.6 Ligand geometry [i](#)

3 ligands are modelled in this entry.

In the following table, the Counts columns list the number of bonds (or angles) for which Mogul statistics could be retrieved, the number of bonds (or angles) that are observed in the model and the number of bonds (or angles) that are defined in the Chemical Component Dictionary. The Link column lists molecule types, if any, to which the group is linked. The Z score for a bond length (or angle) is the number of standard deviations the observed value is removed from the expected value. A bond length (or angle) with  $|Z| > 2$  is considered an outlier worth inspection. RMSZ is the root-mean-square of all Z scores of the bond lengths (or angles).

Mol	Type	Chain	Res	Link	Bond lengths			Bond angles		
					Counts	RMSZ	$\# Z  > 2$	Counts	RMSZ	$\# Z  > 2$
2	DMS	A	502	-	3,3,3	0.65	0	3,3,3	0.49	0
3	WT1	A	503	-	26,27,40	1.82	6 (23%)	35,38,57	2.11	11 (31%)
3	WT1	B	502	-	36,40,40	1.02	2 (5%)	52,57,57	2.07	18 (34%)

In the following table, the Chirals column lists the number of chiral outliers, the number of chiral centers analysed, the number of these observed in the model and the number defined in the Chemical Component Dictionary. Similar counts are reported in the Torsion and Rings columns. '-' means no outliers of that kind were identified.

Mol	Type	Chain	Res	Link	Chirals	Torsions	Rings
3	WT1	A	503	-	-	2/20/23/33	0/2/2/3
3	WT1	B	502	-	-	14/30/33/33	0/3/3/3

All (8) bond length outliers are listed below:

Mol	Chain	Res	Type	Atoms	Z	Observed(Å)	Ideal(Å)
3	A	503	WT1	C37-N24	5.04	1.40	1.34
3	B	502	WT1	N22-N23	-4.01	1.27	1.34
3	A	503	WT1	N22-N23	-3.85	1.29	1.34
3	A	503	WT1	N24-N23	3.28	1.39	1.34
3	A	503	WT1	C21-N22	2.59	1.42	1.36
3	A	503	WT1	C16-C17	2.52	1.43	1.39
3	A	503	WT1	C19-N18	2.36	1.42	1.35
3	B	502	WT1	C21-C19	-2.06	1.47	1.50

All (29) bond angle outliers are listed below:

Mol	Chain	Res	Type	Atoms	Z	Observed(°)	Ideal(°)
3	A	503	WT1	O07-C08-C17	6.45	121.40	114.63
3	B	502	WT1	O28-C27-C30	5.84	123.55	115.41
3	B	502	WT1	O07-C08-C17	4.87	119.74	114.63
3	A	503	WT1	C08-C17-N18	4.73	125.15	116.66
3	B	502	WT1	C34-C25-N24	4.14	121.82	117.87
3	B	502	WT1	O28-C27-C26	-3.91	117.38	124.12
3	A	503	WT1	C17-C16-C11	3.76	126.32	120.56
3	A	503	WT1	C37-C21-N22	-3.67	105.57	107.96
3	A	503	WT1	C09-C08-C17	-3.57	115.54	120.37
3	B	502	WT1	C09-C08-C17	-3.53	115.60	120.37
3	B	502	WT1	C17-C16-C11	3.42	125.79	120.56
3	B	502	WT1	O31-C30-C27	3.18	119.85	115.41
3	B	502	WT1	C08-C17-N18	3.09	122.20	116.66
3	B	502	WT1	C21-N22-N23	2.95	110.59	107.08
3	B	502	WT1	C37-C21-N22	-2.66	106.23	107.96
3	B	502	WT1	N22-N23-N24	2.63	109.29	106.37
3	B	502	WT1	O31-C30-C33	-2.58	119.67	124.12
3	B	502	WT1	C37-N24-N23	-2.48	108.47	112.40
3	A	503	WT1	C16-C11-C12	2.44	125.94	121.38
3	B	502	WT1	C14-C12-C11	2.43	116.18	110.36
3	A	503	WT1	O20-C19-C21	-2.39	117.01	120.59
3	B	502	WT1	C10-C11-C16	-2.38	113.16	117.76
3	A	503	WT1	C10-C11-C16	-2.32	113.28	117.76
3	B	502	WT1	C16-C11-C12	2.29	125.66	121.38
3	A	503	WT1	C14-C12-C11	2.26	115.78	110.36

*Continued on next page...*

*Continued from previous page...*

Mol	Chain	Res	Type	Atoms	Z	Observed(°)	Ideal(°)
3	A	503	WT1	C21-C37-N24	-2.23	106.51	110.85
3	B	502	WT1	C32-O31-C30	-2.17	114.26	117.53
3	B	502	WT1	C38-C37-C21	2.09	132.22	129.71
3	A	503	WT1	C10-C09-C08	2.06	123.97	120.06

There are no chirality outliers.

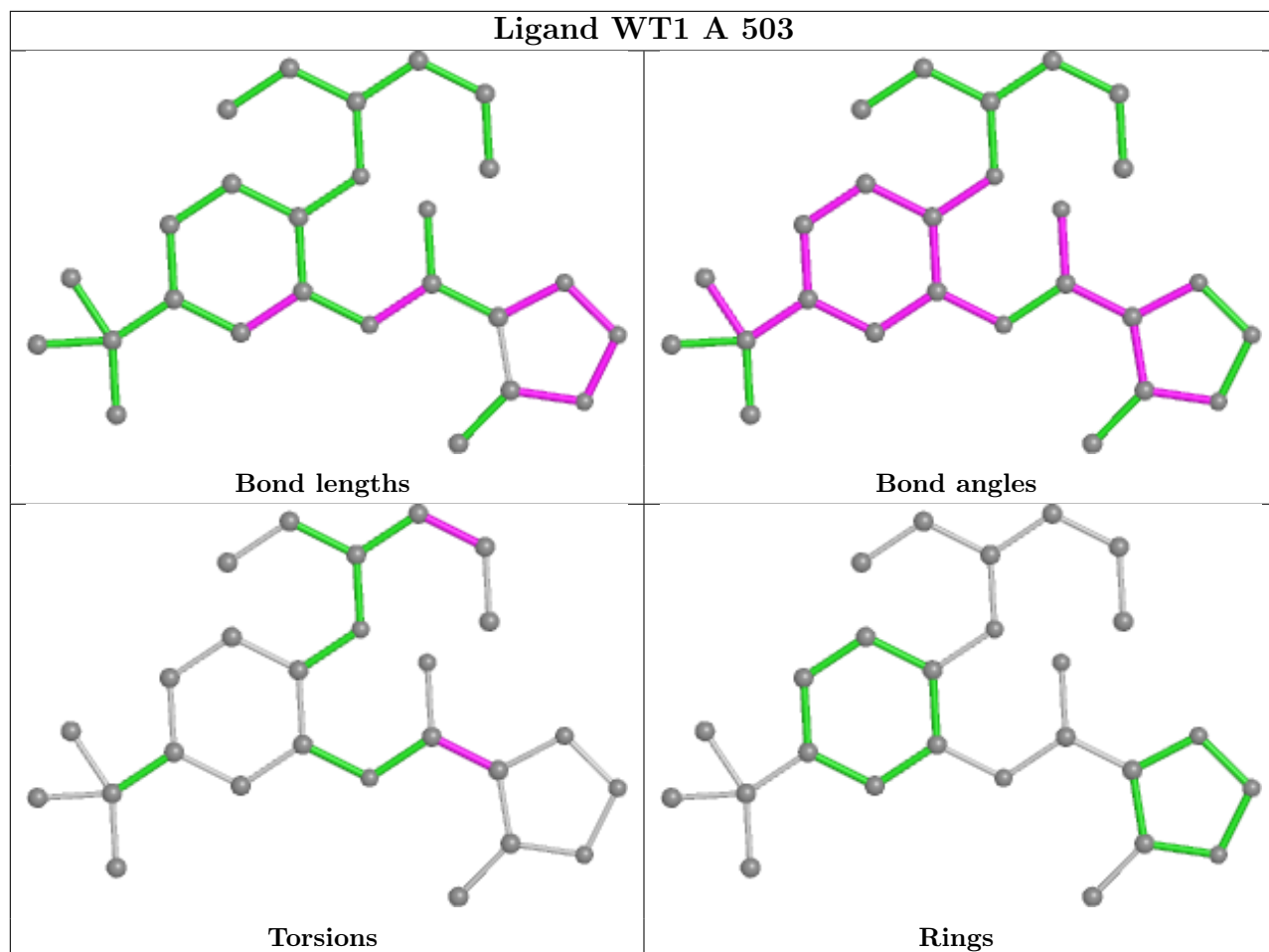
All (16) torsion outliers are listed below:

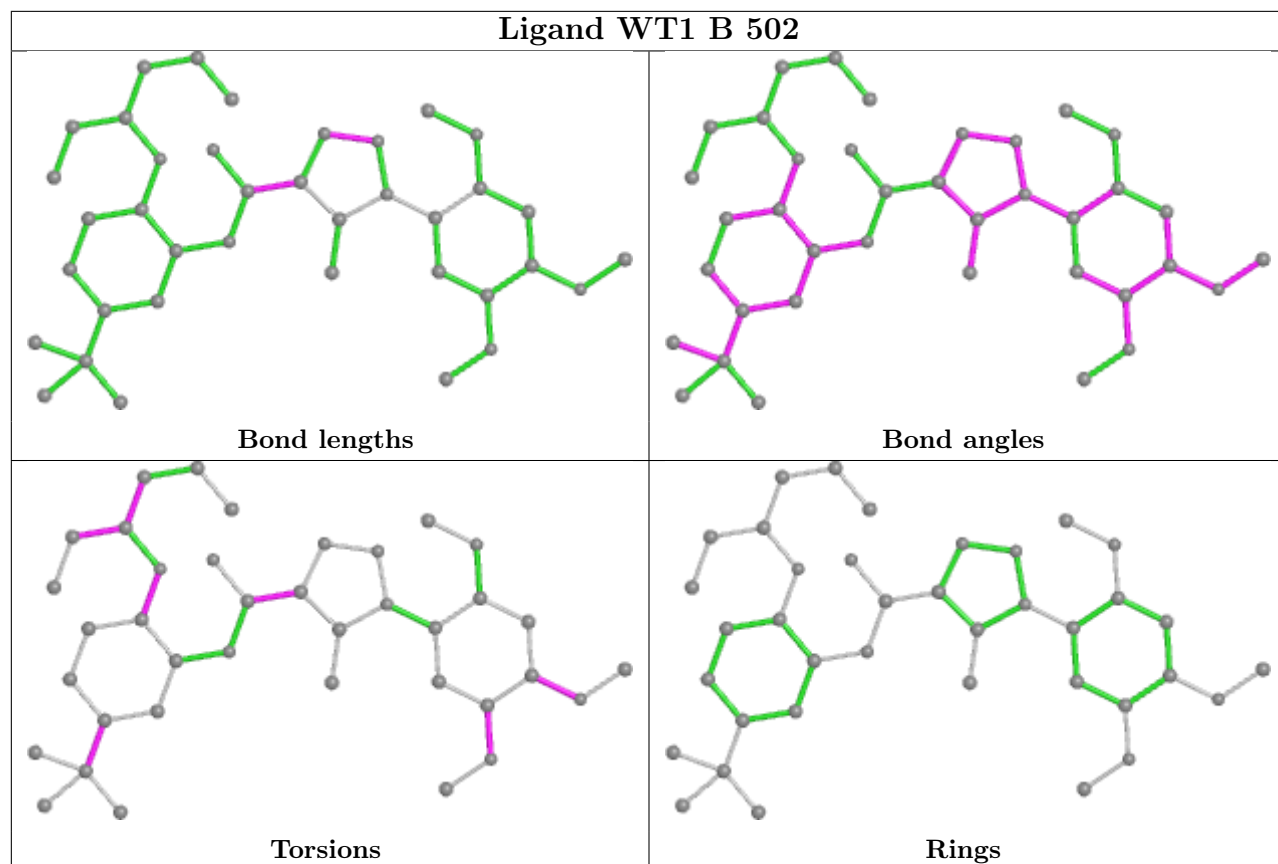
Mol	Chain	Res	Type	Atoms
3	A	503	WT1	O20-C19-C21-C37
3	B	502	WT1	C30-C27-O28-C29
3	B	502	WT1	C26-C27-O28-C29
3	B	502	WT1	C33-C30-O31-C32
3	B	502	WT1	O07-C04-C05-C06
3	B	502	WT1	C27-C30-O31-C32
3	B	502	WT1	C02-C03-C04-C05
3	A	503	WT1	C01-C02-C03-C04
3	B	502	WT1	O20-C19-C21-C37
3	B	502	WT1	C02-C03-C04-O07
3	B	502	WT1	C17-C08-O07-C04
3	B	502	WT1	C03-C04-C05-C06
3	B	502	WT1	C09-C08-O07-C04
3	B	502	WT1	C16-C11-C12-C15
3	B	502	WT1	C16-C11-C12-C14
3	B	502	WT1	C16-C11-C12-C13

There are no ring outliers.

No monomer is involved in short contacts.

The following is a two-dimensional graphical depiction of Mogul quality analysis of bond lengths, bond angles, torsion angles, and ring geometry for all instances of the Ligand of Interest. In addition, ligands with molecular weight > 250 and outliers as shown on the validation Tables will also be included. For torsion angles, if less than 5% of the Mogul distribution of torsion angles is within 10 degrees of the torsion angle in question, then that torsion angle is considered an outlier. Any bond that is central to one or more torsion angles identified as an outlier by Mogul will be highlighted in the graph. For rings, the root-mean-square deviation (RMSD) between the ring in question and similar rings identified by Mogul is calculated over all ring torsion angles. If the average RMSD is greater than 60 degrees and the minimal RMSD between the ring in question and any Mogul-identified rings is also greater than 60 degrees, then that ring is considered an outlier. The outliers are highlighted in purple. The color gray indicates Mogul did not find sufficient equivalents in the CSD to analyse the geometry.





## 5.7 Other polymers [i](#)

There are no such residues in this entry.

## 5.8 Polymer linkage issues [i](#)

There are no chain breaks in this entry.

## 6 Fit of model and data

### 6.1 Protein, DNA and RNA chains

In the following table, the column labelled ‘#RSRZ > 2’ contains the number (and percentage) of RSRZ outliers, followed by percent RSRZ outliers for the chain as percentile scores relative to all X-ray entries and entries of similar resolution. The OWAB column contains the minimum, median, 95<sup>th</sup> percentile and maximum values of the occupancy-weighted average B-factor per residue. The column labelled ‘Q < 0.9’ lists the number of (and percentage) of residues with an average occupancy less than 0.9.

Mol	Chain	Analysed	<RSRZ>	#RSRZ>2	OWAB(Å <sup>2</sup> )	Q<0.9
1	A	282/351 (80%)	0.09	10 (3%) 44 40	16, 39, 82, 98	0
1	B	278/351 (79%)	0.14	13 (4%) 31 28	16, 41, 89, 120	0
All	All	560/702 (79%)	0.12	23 (4%) 37 34	16, 40, 86, 120	0

All (23) RSRZ outliers are listed below:

Mol	Chain	Res	Type	RSRZ
1	B	205	ASP	4.6
1	A	197	ALA	4.2
1	A	199	TRP	3.9
1	A	318	LEU	3.6
1	A	196	ALA	3.4
1	A	198	LYS	3.2
1	A	446	LEU	3.2
1	A	445	SER	3.1
1	B	170	LYS	2.8
1	B	206	LEU	2.7
1	B	319	LEU	2.7
1	B	177	VAL	2.7
1	A	379	CYS	2.6
1	B	171	ASN	2.6
1	A	316	GLN	2.5
1	B	284	CYS	2.5
1	B	430	GLY	2.5
1	B	431	ILE	2.4
1	B	202	VAL	2.3
1	B	359	HIS	2.3
1	A	416	ASP	2.1
1	B	251	PHE	2.0
1	B	318	LEU	2.0



## 6.2 Non-standard residues in protein, DNA, RNA chains [i](#)

There are no non-standard protein/DNA/RNA residues in this entry.

## 6.3 Carbohydrates [i](#)

There are no monosaccharides in this entry.

## 6.4 Ligands [i](#)

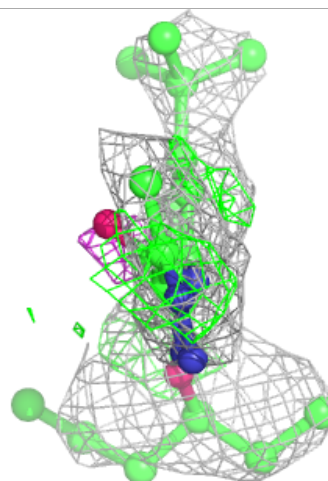
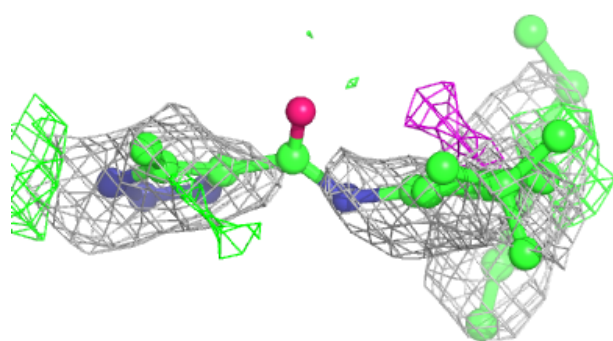
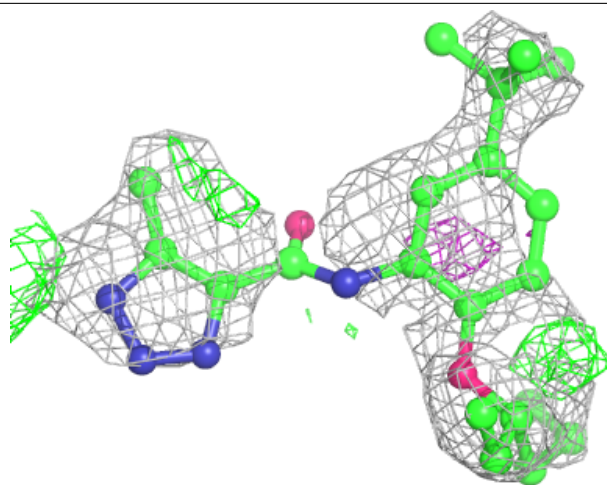
In the following table, the Atoms column lists the number of modelled atoms in the group and the number defined in the chemical component dictionary. The B-factors column lists the minimum, median, 95<sup>th</sup> percentile and maximum values of B factors of atoms in the group. The column labelled 'Q< 0.9' lists the number of atoms with occupancy less than 0.9.

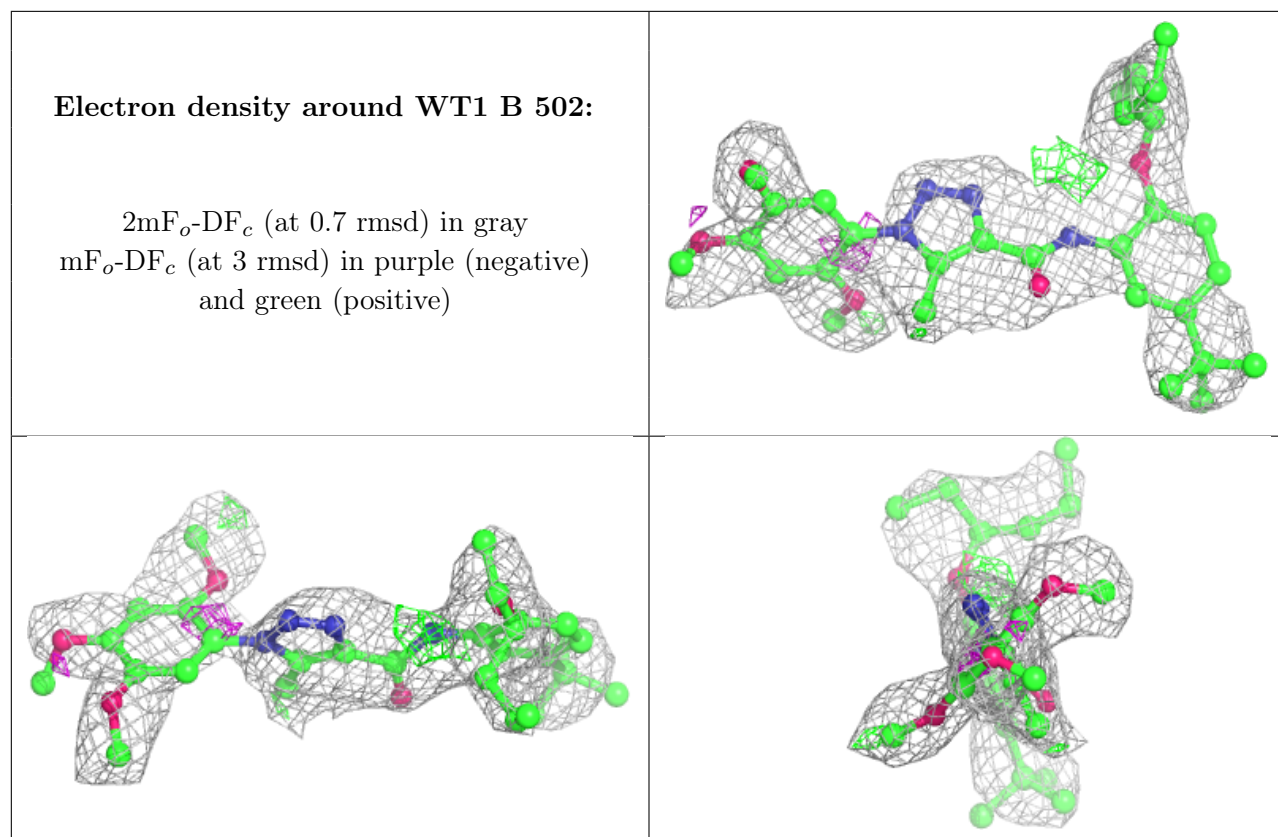
Mol	Type	Chain	Res	Atoms	RSCC	RSR	B-factors(Å <sup>2</sup> )	Q<0.9
3	WT1	A	503	26/38	0.74	0.39	38,65,72,74	0
3	WT1	B	502	38/38	0.86	0.28	35,59,67,69	0
2	DMS	A	502	4/4	0.94	0.17	45,46,56,57	0

The following is a graphical depiction of the model fit to experimental electron density of all instances of the Ligand of Interest. In addition, ligands with molecular weight > 250 and outliers as shown on the geometry validation Tables will also be included. Each fit is shown from different orientation to approximate a three-dimensional view.

**Electron density around WT1 A 503:**

$2mF_o-DF_c$  (at 0.7 rmsd) in gray  
 $mF_o-DF_c$  (at 3 rmsd) in purple (negative)  
and green (positive)





## 6.5 Other polymers [i](#)

There are no such residues in this entry.