



Full wwPDB EM Validation Report ⓘ

Nov 21, 2023 – 06:27 PM EST

PDB ID : 8T3K
EMDB ID : EMD-41004
Title : Heterodimeric ABC transporter BmrCD in the inward-facing conformation bound to ATP: BmrCD_IF-ATP2
Authors : Tang, Q.; Mchaourab, H.
Deposited on : 2023-06-07
Resolution : 3.33 Å(reported)

This is a Full wwPDB EM Validation Report for a publicly released PDB entry.

We welcome your comments at validation@mail.wwpdb.org

A user guide is available at

<https://www.wwpdb.org/validation/2017/EMValidationReportHelp>

with specific help available everywhere you see the ⓘ symbol.

The types of validation reports are described at

<http://www.wwpdb.org/validation/2017/FAQs#types>.

The following versions of software and data (see [references ⓘ](#)) were used in the production of this report:

EMDB validation analysis : 0.0.1.dev70
Mogul : 1.8.5 (274361), CSD as541be (2020)
MolProbity : 4.02b-467
buster-report : 1.1.7 (2018)
Percentile statistics : 20191225.v01 (using entries in the PDB archive December 25th 2019)
MapQ : 1.9.9
Ideal geometry (proteins) : Engh & Huber (2001)
Ideal geometry (DNA, RNA) : Parkinson et al. (1996)
Validation Pipeline (wwPDB-VP) : 2.36

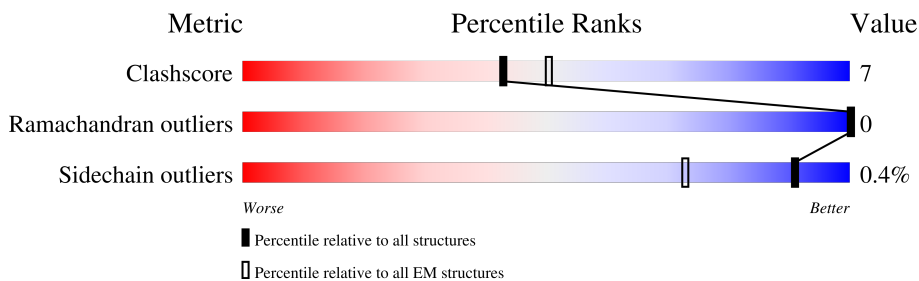
1 Overall quality at a glance

The following experimental techniques were used to determine the structure:

ELECTRON MICROSCOPY

The reported resolution of this entry is 3.33 Å.

Percentile scores (ranging between 0-100) for global validation metrics of the entry are shown in the following graphic. The table shows the number of entries on which the scores are based.



Metric	Whole archive (#Entries)	EM structures (#Entries)
Clashscore	158937	4297
Ramachandran outliers	154571	4023
Sidechain outliers	154315	3826

The table below summarises the geometric issues observed across the polymeric chains and their fit to the map. The red, orange, yellow and green segments of the bar indicate the fraction of residues that contain outliers for ≥ 3 , 2, 1 and 0 types of geometric quality criteria respectively. A grey segment represents the fraction of residues that are not modelled. The numeric value for each fraction is indicated below the corresponding segment, with a dot representing fractions $\leq 5\%$. The upper red bar (where present) indicates the fraction of residues that have poor fit to the EM map (all-atom inclusion $< 40\%$). The numeric value is given above the bar.

Mol	Chain	Length	Quality of chain
1	D	681	
2	C	607	

2 Entry composition

There are 4 unique types of molecules in this entry. The entry contains 20376 atoms, of which 10338 are hydrogens and 0 are deuteriums.

In the tables below, the AltConf column contains the number of residues with at least one atom in alternate conformation and the Trace column contains the number of residues modelled with at most 2 atoms.

- Molecule 1 is a protein called Probable multidrug resistance ABC transporter ATP-binding/permease protein YheH.

Mol	Chain	Residues	Atoms					AltConf	Trace	
			Total	C	H	N	O			S
1	D	663	10675	3413	5371	903	970	18	0	0

There are 12 discrepancies between the modelled and reference sequences:

Chain	Residue	Modelled	Actual	Comment	Reference
D	154	ALA	CYS	engineered mutation	UNP O07549
D	256	ALA	CYS	engineered mutation	UNP O07549
D	351	ALA	CYS	engineered mutation	UNP O07549
D	592	GLN	GLU	engineered mutation	UNP O07549
D	674	LEU	-	expression tag	UNP O07549
D	675	GLU	-	expression tag	UNP O07549
D	676	HIS	-	expression tag	UNP O07549
D	677	HIS	-	expression tag	UNP O07549
D	678	HIS	-	expression tag	UNP O07549
D	679	HIS	-	expression tag	UNP O07549
D	680	HIS	-	expression tag	UNP O07549
D	681	HIS	-	expression tag	UNP O07549

- Molecule 2 is a protein called Probable multidrug resistance ABC transporter ATP-binding/permease protein YheI.

Mol	Chain	Residues	Atoms					AltConf	Trace	
			Total	C	H	N	O			S
2	C	541	8634	2775	4359	713	764	23	0	0

There are 24 discrepancies between the modelled and reference sequences:

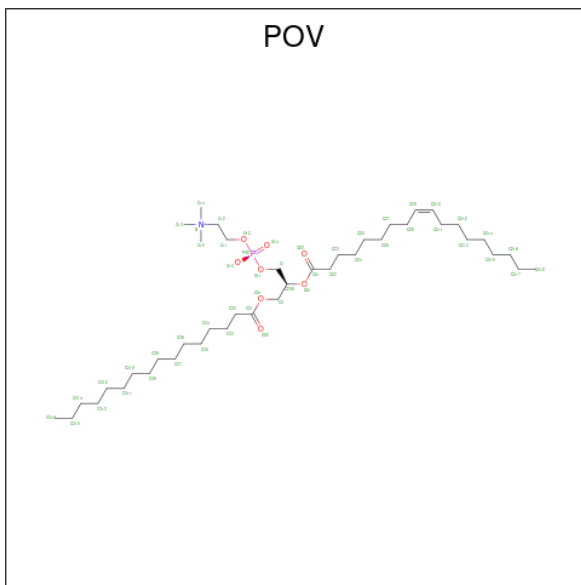
Chain	Residue	Modelled	Actual	Comment	Reference
C	-21	MET	-	initiating methionine	UNP O07550
C	-20	GLY	-	expression tag	UNP O07550
C	-19	SER	-	expression tag	UNP O07550

Continued on next page...

Continued from previous page...

Chain	Residue	Modelled	Actual	Comment	Reference
C	-18	SER	-	expression tag	UNP O07550
C	-17	HIS	-	expression tag	UNP O07550
C	-16	HIS	-	expression tag	UNP O07550
C	-15	HIS	-	expression tag	UNP O07550
C	-14	HIS	-	expression tag	UNP O07550
C	-13	HIS	-	expression tag	UNP O07550
C	-12	HIS	-	expression tag	UNP O07550
C	-11	SER	-	expression tag	UNP O07550
C	-10	SER	-	expression tag	UNP O07550
C	-9	GLY	-	expression tag	UNP O07550
C	-8	LEU	-	expression tag	UNP O07550
C	-7	VAL	-	expression tag	UNP O07550
C	-6	PRO	-	expression tag	UNP O07550
C	-5	ARG	-	expression tag	UNP O07550
C	-4	GLY	-	expression tag	UNP O07550
C	-3	SER	-	expression tag	UNP O07550
C	-2	HIS	-	expression tag	UNP O07550
C	-1	MET	-	expression tag	UNP O07550
C	0	LEU	-	expression tag	UNP O07550
C	1	GLU	-	expression tag	UNP O07550
C	500	GLN	ASP	engineered mutation	UNP O07550

- Molecule 3 is (2S)-3-(hexadecanoyloxy)-2-[(9Z)-octadec-9-enoyloxy]propyl 2-(trimethylamm onio)ethyl phosphate (three-letter code: POV) (formula: C₄₂H₈₂NO₈P) (labeled as "Ligand of Interest" by depositor).



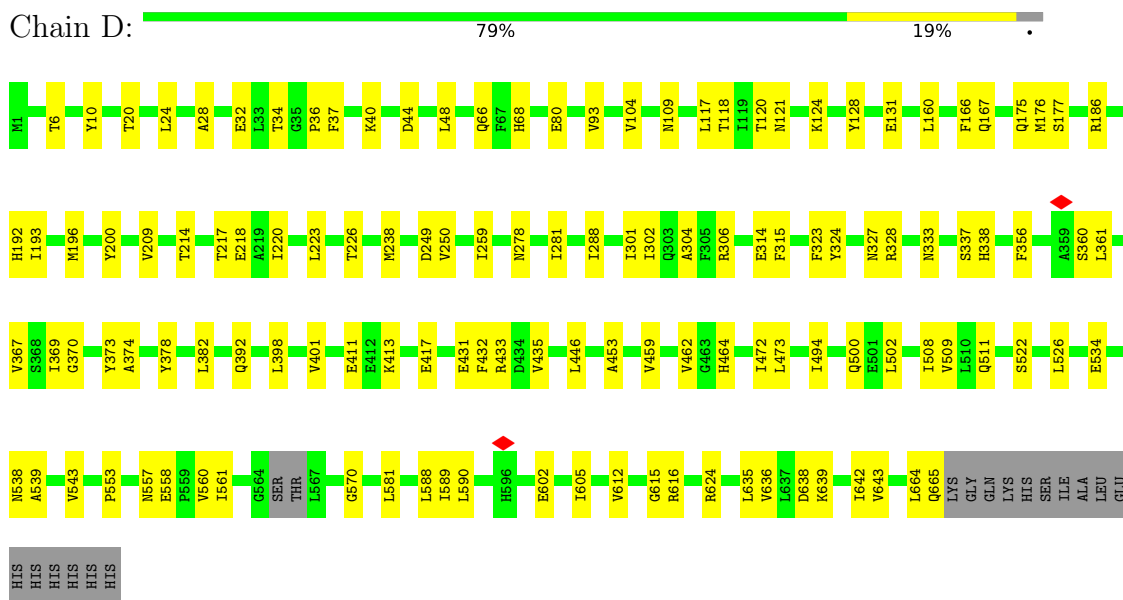
Mol	Chain	Residues	Atoms	AltConf
3	D	1	Total C H O P 101 34 58 8 1	0
3	D	1	Total C H N O P 108 35 63 1 8 1	0
3	D	1	Total C H 74 27 47	0
3	D	1	Total C H N O P 134 42 82 1 8 1	0
3	D	1	Total C H O P 57 19 29 8 1	0
3	D	1	Total C H 17 7 10	0
3	D	1	Total C H O 88 31 53 4	0
3	C	1	Total C H N O P 38 11 19 1 6 1	0
3	C	1	Total C H 41 14 27	0
3	C	1	Total C H 44 15 29	0
3	C	1	Total C H O 48 18 26 4	0
3	C	1	Total C H O 97 34 59 4	0
3	C	1	Total C H N O P 134 42 82 1 8 1	0

- Molecule 4 is ADENOSINE-5'-TRIPHOSPHATE (three-letter code: ATP) (formula: $C_{10}H_{16}N_5O_{13}P_3$) (labeled as "Ligand of Interest" by depositor).

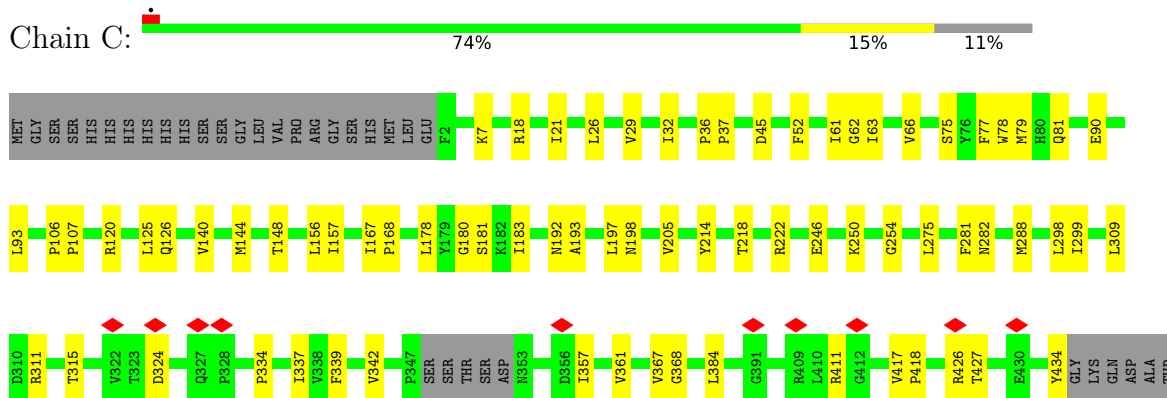
3 Residue-property plots

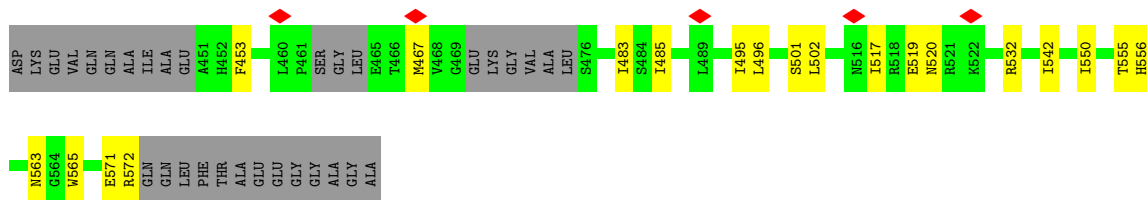
These plots are drawn for all protein, RNA, DNA and oligosaccharide chains in the entry. The first graphic for a chain summarises the proportions of the various outlier classes displayed in the second graphic. The second graphic shows the sequence view annotated by issues in geometry and atom inclusion in map density. Residues are color-coded according to the number of geometric quality criteria for which they contain at least one outlier: green = 0, yellow = 1, orange = 2 and red = 3 or more. A red diamond above a residue indicates a poor fit to the EM map for this residue (all-atom inclusion < 40%). Stretches of 2 or more consecutive residues without any outlier are shown as a green connector. Residues present in the sample, but not in the model, are shown in grey.

- Molecule 1: Probable multidrug resistance ABC transporter ATP-binding/permease protein YheH



- Molecule 2: Probable multidrug resistance ABC transporter ATP-binding/permease protein YheI





4 Experimental information

Property	Value	Source
EM reconstruction method	SINGLE PARTICLE	Depositor
Imposed symmetry	POINT, Not provided	
Number of particles used	76190	Depositor
Resolution determination method	FSC 0.143 CUT-OFF	Depositor
CTF correction method	NONE	Depositor
Microscope	FEI TITAN KRIOS	Depositor
Voltage (kV)	300	Depositor
Electron dose ($e^-/\text{\AA}^2$)	15	Depositor
Minimum defocus (nm)	400	Depositor
Maximum defocus (nm)	2200	Depositor
Magnification	Not provided	
Image detector	GATAN K3 (6k x 4k)	Depositor
Maximum map value	2.165	Depositor
Minimum map value	-0.268	Depositor
Average map value	0.014	Depositor
Map value standard deviation	0.031	Depositor
Recommended contour level	0.13	Depositor
Map size (\AA)	310.56, 310.56, 310.56	wwPDB
Map dimensions	480, 480, 480	wwPDB
Map angles ($^\circ$)	90.0, 90.0, 90.0	wwPDB
Pixel spacing (\AA)	0.647, 0.647, 0.647	Depositor

5 Model quality [i](#)

5.1 Standard geometry [i](#)

Bond lengths and bond angles in the following residue types are not validated in this section: ATP, POV

The Z score for a bond length (or angle) is the number of standard deviations the observed value is removed from the expected value. A bond length (or angle) with $|Z| > 5$ is considered an outlier worth inspection. RMSZ is the root-mean-square of all Z scores of the bond lengths (or angles).

Mol	Chain	Bond lengths		Bond angles	
		RMSZ	# Z >5	RMSZ	# Z >5
1	D	0.30	0/5404	0.51	0/7294
2	C	0.30	0/4364	0.52	0/5902
All	All	0.30	0/9768	0.52	0/13196

There are no bond length outliers.

There are no bond angle outliers.

There are no chirality outliers.

There are no planarity outliers.

5.2 Too-close contacts [i](#)

In the following table, the Non-H and H(model) columns list the number of non-hydrogen atoms and hydrogen atoms in the chain respectively. The H(added) column lists the number of hydrogen atoms added and optimized by MolProbity. The Clashes column lists the number of clashes within the asymmetric unit, whereas Symm-Clashes lists symmetry-related clashes.

Mol	Chain	Non-H	H(model)	H(added)	Clashes	Symm-Clashes
1	D	5304	5371	5370	96	0
2	C	4275	4359	4354	58	0
3	C	160	242	242	1	0
3	D	237	342	342	1	0
4	C	31	12	12	0	0
4	D	31	12	12	0	0
All	All	10038	10338	10332	144	0

The all-atom clashscore is defined as the number of clashes found per 1000 atoms (including hydrogen atoms). The all-atom clashscore for this structure is 7.

All (144) close contacts within the same asymmetric unit are listed below, sorted by their clash

magnitude.

Atom-1	Atom-2	Interatomic distance (Å)	Clash overlap (Å)
1:D:511:GLN:OE1	1:D:511:GLN:N	2.22	0.72
2:C:90:GLU:OE2	2:C:126:GLN:NE2	2.26	0.69
1:D:186:ARG:NH2	1:D:218:GLU:OE1	2.26	0.68
2:C:502:LEU:O	2:C:532:ARG:NH2	2.29	0.65
1:D:538:ASN:HB2	1:D:581:LEU:HD22	1.78	0.64
1:D:560:VAL:O	1:D:560:VAL:HG12	1.98	0.64
1:D:192:HIS:O	1:D:196:MET:HG2	1.99	0.63
2:C:334:PRO:HB2	2:C:495:ILE:HD11	1.80	0.63
1:D:615:GLY:O	1:D:616:ARG:HG3	1.98	0.62
1:D:522:SER:O	1:D:526:LEU:N	2.34	0.61
2:C:496:LEU:HD13	2:C:517:ILE:HD11	1.82	0.61
2:C:563:ASN:OD1	2:C:565:TRP:NE1	2.34	0.61
1:D:314:GLU:OE1	1:D:314:GLU:N	2.30	0.59
2:C:311:ARG:O	2:C:315:THR:HG22	2.02	0.59
1:D:249:ASP:OD1	1:D:250:VAL:N	2.36	0.59
1:D:66:GLN:N	1:D:66:GLN:OE1	2.36	0.58
1:D:624:ARG:NE	1:D:624:ARG:O	2.36	0.58
2:C:26:LEU:HD13	2:C:78:TRP:CZ2	2.39	0.58
2:C:571:GLU:O	2:C:572:ARG:C	2.42	0.57
1:D:508:ILE:O	2:C:214:TYR:OH	2.23	0.57
2:C:246:GLU:OE2	2:C:250:LYS:NZ	2.38	0.56
1:D:44:ASP:OD1	1:D:370:GLY:N	2.37	0.56
2:C:337:ILE:HD13	2:C:384:LEU:HD11	1.87	0.56
3:C:606:POV:O12	3:C:606:POV:H15A	2.06	0.55
1:D:306:ARG:O	1:D:306:ARG:NE	2.40	0.55
1:D:356:PHE:O	1:D:360:SER:HB2	2.07	0.55
1:D:196:MET:CE	1:D:200:TYR:CD1	2.91	0.54
1:D:538:ASN:CB	1:D:581:LEU:HD22	2.37	0.54
2:C:29:VAL:HA	2:C:32:ILE:HG22	1.87	0.54
2:C:120:ARG:HG2	2:C:315:THR:HG21	1.90	0.54
1:D:612:VAL:O	1:D:616:ARG:NH1	2.39	0.54
1:D:508:ILE:HD12	1:D:589:ILE:O	2.08	0.54
2:C:18:ARG:HA	2:C:21:ILE:HG22	1.90	0.53
1:D:259:ILE:HD11	1:D:382:LEU:HD21	1.92	0.52
1:D:570:GLY:HA2	1:D:605:ILE:HD11	1.90	0.52
1:D:581:LEU:HD12	1:D:612:VAL:HG22	1.91	0.52
2:C:288:MET:O	2:C:288:MET:HG3	2.09	0.52
1:D:124:LYS:HA	1:D:124:LYS:HE2	1.92	0.52
2:C:315:THR:O	2:C:315:THR:OG1	2.28	0.52
1:D:28:ALA:HB2	1:D:166:PHE:HB3	1.91	0.52
1:D:196:MET:HE3	1:D:200:TYR:CD1	2.45	0.52

Continued on next page...

Continued from previous page...

Atom-1	Atom-2	Interatomic distance (Å)	Clash overlap (Å)
2:C:7:LYS:HB3	2:C:309:LEU:HD21	1.92	0.52
1:D:500:GLN:OE1	1:D:500:GLN:N	2.43	0.52
1:D:6:THR:HG22	1:D:10:TYR:CE2	2.45	0.51
1:D:48:LEU:HD21	2:C:275:LEU:HD22	1.92	0.51
2:C:337:ILE:HD11	2:C:495:ILE:HD13	1.92	0.51
1:D:193:ILE:HA	1:D:196:MET:HG2	1.93	0.51
1:D:120:THR:HG22	1:D:124:LYS:HE2	1.93	0.50
1:D:453:ALA:HB1	1:D:459:VAL:HG21	1.93	0.50
2:C:192:ASN:OD1	2:C:193:ALA:N	2.44	0.50
1:D:44:ASP:CG	1:D:370:GLY:HA3	2.31	0.50
1:D:109:ASN:OD1	1:D:121:ASN:N	2.42	0.50
2:C:156:LEU:O	2:C:157:ILE:HD13	2.11	0.50
1:D:226:THR:HG23	1:D:392:GLN:HG2	1.93	0.49
1:D:431:GLU:OE2	1:D:433:ARG:NH2	2.45	0.49
2:C:298:LEU:HD23	2:C:299:ILE:N	2.27	0.49
1:D:288:ILE:HG23	1:D:315:PHE:CZ	2.47	0.49
2:C:157:ILE:HG21	2:C:281:PHE:CD2	2.48	0.49
2:C:519:GLU:OE1	2:C:520:ASN:N	2.45	0.49
1:D:453:ALA:CB	1:D:459:VAL:HG21	2.42	0.49
1:D:534:GLU:O	1:D:538:ASN:ND2	2.46	0.48
1:D:68:HIS:NE2	1:D:131:GLU:OE1	2.44	0.48
1:D:373:TYR:HE2	2:C:282:ASN:OD1	1.96	0.48
1:D:238:MET:C	1:D:238:MET:SD	2.93	0.48
1:D:323:PHE:O	1:D:327:ASN:ND2	2.46	0.48
1:D:464:HIS:HD1	1:D:638:ASP:HB2	1.79	0.48
1:D:104:VAL:HG13	1:D:128:TYR:CE2	2.49	0.47
1:D:32:GLU:OE1	1:D:167:GLN:NE2	2.44	0.47
1:D:417:GLU:N	1:D:417:GLU:OE1	2.48	0.47
2:C:77:PHE:O	2:C:81:GLN:HG2	2.14	0.47
1:D:20:THR:O	1:D:24:LEU:HD13	2.15	0.47
1:D:337:SER:OG	1:D:338:HIS:N	2.44	0.47
1:D:615:GLY:O	1:D:616:ARG:CG	2.62	0.47
1:D:553:PRO:HA	1:D:557:ASN:HB3	1.97	0.46
2:C:197:LEU:C	2:C:197:LEU:HD23	2.36	0.46
1:D:473:LEU:HD12	1:D:589:ILE:HG21	1.97	0.46
2:C:339:PHE:HD2	2:C:342:VAL:HG11	1.81	0.46
2:C:417:VAL:HG11	2:C:501:SER:HB2	1.96	0.46
1:D:34:THR:HG23	3:D:701:POV:H31D	1.98	0.46
1:D:44:ASP:OD2	1:D:370:GLY:HA3	2.16	0.46
1:D:324:TYR:OH	1:D:328:ARG:NH1	2.49	0.46
1:D:369:ILE:HG21	2:C:275:LEU:HD23	1.98	0.46

Continued on next page...

Continued from previous page...

Atom-1	Atom-2	Interatomic distance (Å)	Clash overlap (Å)
2:C:426:ARG:O	2:C:467:MET:HA	2.16	0.46
1:D:398:LEU:O	1:D:401:VAL:HG22	2.16	0.45
2:C:144:MET:O	2:C:148:THR:HG23	2.16	0.45
1:D:361:LEU:HD23	2:C:52:PHE:HB3	1.97	0.45
2:C:417:VAL:HG21	2:C:485:ILE:HA	1.98	0.45
1:D:558:GLU:HB3	1:D:561:ILE:HG23	1.98	0.45
1:D:120:THR:HG22	1:D:124:LYS:CE	2.46	0.45
1:D:411:GLU:O	1:D:413:LYS:HD2	2.17	0.45
2:C:75:SER:HA	2:C:78:TRP:CD1	2.50	0.45
1:D:509:VAL:HB	1:D:590:LEU:HD22	1.98	0.45
1:D:34:THR:HG22	1:D:34:THR:O	2.16	0.45
1:D:588:LEU:HD23	1:D:589:ILE:N	2.32	0.45
1:D:635:LEU:HD21	1:D:642:ILE:HG23	1.99	0.45
2:C:106:PRO:N	2:C:107:PRO:CD	2.80	0.45
2:C:218:THR:O	2:C:222:ARG:HG3	2.17	0.45
2:C:36:PRO:N	2:C:37:PRO:HD2	2.31	0.44
1:D:304:ALA:HA	2:C:411:ARG:HD3	1.99	0.44
1:D:446:LEU:HD11	1:D:472:ILE:HD13	1.98	0.44
1:D:40:LYS:HB2	1:D:374:ALA:HB2	2.00	0.44
1:D:360:SER:HB3	1:D:367:VAL:HG13	2.00	0.43
1:D:539:ALA:O	1:D:543:VAL:HG22	2.18	0.43
1:D:278:ASN:HA	1:D:281:ILE:HG22	2.01	0.43
2:C:26:LEU:CD2	2:C:140:VAL:HG11	2.48	0.43
1:D:602:GLU:HA	1:D:605:ILE:HB	2.01	0.43
1:D:209:VAL:HG21	2:C:205:VAL:HG21	2.01	0.42
1:D:288:ILE:HG23	1:D:315:PHE:HZ	1.82	0.42
1:D:462:VAL:O	1:D:462:VAL:HG23	2.19	0.42
1:D:636:VAL:HG23	1:D:643:VAL:HG13	2.00	0.42
1:D:664:LEU:O	1:D:665:GLN:C	2.57	0.42
1:D:323:PHE:CZ	1:D:327:ASN:ND2	2.87	0.42
2:C:180:GLY:HA2	2:C:183:ILE:HG22	2.00	0.42
1:D:302:ILE:HD12	2:C:434:TYR:OH	2.19	0.42
2:C:167:ILE:HG22	2:C:168:PRO:HD3	2.00	0.42
1:D:301:ILE:HD11	2:C:418:PRO:HG3	2.02	0.42
2:C:61:ILE:HG13	2:C:62:GLY:N	2.35	0.42
2:C:178:LEU:O	2:C:181:SER:OG	2.28	0.42
2:C:367:VAL:HG12	2:C:368:GLY:N	2.34	0.42
1:D:93:VAL:O	1:D:93:VAL:HG23	2.20	0.42
1:D:160:LEU:HD21	2:C:254:GLY:HA3	2.02	0.42
1:D:176:MET:O	1:D:177:SER:C	2.58	0.42
1:D:36:PRO:HG2	1:D:378:TYR:CE1	2.55	0.41

Continued on next page...

Continued from previous page...

Atom-1	Atom-2	Interatomic distance (Å)	Clash overlap (Å)
1:D:333:ASN:OD1	1:D:333:ASN:C	2.59	0.41
2:C:93:LEU:HB3	2:C:125:LEU:HD22	2.02	0.41
1:D:117:LEU:HD12	1:D:118:THR:H	1.85	0.41
1:D:217:THR:HA	1:D:220:ILE:HD12	2.03	0.41
2:C:453:PHE:CE2	2:C:483:ILE:HD11	2.56	0.41
1:D:104:VAL:HG13	1:D:128:TYR:HE2	1.86	0.41
1:D:175:GLN:O	1:D:176:MET:C	2.58	0.41
1:D:494:ILE:HD11	1:D:502:LEU:HD21	2.01	0.41
1:D:638:ASP:OD1	1:D:639:LYS:N	2.54	0.41
2:C:357:ILE:HA	2:C:550:ILE:HD11	2.01	0.41
1:D:223:LEU:O	1:D:223:LEU:HD23	2.21	0.41
2:C:45:ASP:OD1	2:C:45:ASP:O	2.39	0.41
2:C:337:ILE:O	2:C:361:VAL:N	2.48	0.41
1:D:226:THR:HG23	1:D:392:GLN:CG	2.51	0.41
2:C:63:ILE:HA	2:C:66:VAL:HG22	2.02	0.41
1:D:80:GLU:N	1:D:80:GLU:OE1	2.55	0.40
2:C:542:ILE:O	2:C:542:ILE:HG23	2.22	0.40
2:C:555:THR:OG1	2:C:556:HIS:N	2.55	0.40
1:D:44:ASP:OD1	1:D:370:GLY:CA	2.70	0.40
1:D:432:PHE:CD2	1:D:435:VAL:HG11	2.57	0.40
1:D:214:THR:HG21	2:C:198:ASN:OD1	2.22	0.40

There are no symmetry-related clashes.

5.3 Torsion angles [\(i\)](#)

5.3.1 Protein backbone [\(i\)](#)

In the following table, the Percentiles column shows the percent Ramachandran outliers of the chain as a percentile score with respect to all PDB entries followed by that with respect to all EM entries.

The Analysed column shows the number of residues for which the backbone conformation was analysed, and the total number of residues.

Mol	Chain	Analysed	Favoured	Allowed	Outliers	Percentiles	
1	D	659/681 (97%)	610 (93%)	49 (7%)	0	100	100
2	C	531/607 (88%)	494 (93%)	37 (7%)	0	100	100
All	All	1190/1288 (92%)	1104 (93%)	86 (7%)	0	100	100

There are no Ramachandran outliers to report.

5.3.2 Protein sidechains [i](#)

In the following table, the Percentiles column shows the percent sidechain outliers of the chain as a percentile score with respect to all PDB entries followed by that with respect to all EM entries.

The Analysed column shows the number of residues for which the sidechain conformation was analysed, and the total number of residues.

Mol	Chain	Analysed	Rotameric	Outliers	Percentiles	
1	D	565/581 (97%)	564 (100%)	1 (0%)	93	97
2	C	458/508 (90%)	455 (99%)	3 (1%)	84	91
All	All	1023/1089 (94%)	1019 (100%)	4 (0%)	91	95

All (4) residues with a non-rotameric sidechain are listed below:

Mol	Chain	Res	Type
1	D	37	PHE
2	C	79	MET
2	C	324	ASP
2	C	427	THR

Sometimes sidechains can be flipped to improve hydrogen bonding and reduce clashes. There are no such sidechains identified.

5.3.3 RNA [i](#)

There are no RNA molecules in this entry.

5.4 Non-standard residues in protein, DNA, RNA chains [i](#)

There are no non-standard protein/DNA/RNA residues in this entry.

5.5 Carbohydrates [i](#)

There are no monosaccharides in this entry.

5.6 Ligand geometry

15 ligands are modelled in this entry.

In the following table, the Counts columns list the number of bonds (or angles) for which Mogul statistics could be retrieved, the number of bonds (or angles) that are observed in the model and the number of bonds (or angles) that are defined in the Chemical Component Dictionary. The Link column lists molecule types, if any, to which the group is linked. The Z score for a bond length (or angle) is the number of standard deviations the observed value is removed from the expected value. A bond length (or angle) with $|Z| > 2$ is considered an outlier worth inspection. RMSZ is the root-mean-square of all Z scores of the bond lengths (or angles).

Mol	Type	Chain	Res	Link	Bond lengths			Bond angles		
					Counts	RMSZ	# Z > 2	Counts	RMSZ	# Z > 2
3	POV	D	707	-	34,34,51	0.31	0	35,35,59	0.24	0
3	POV	C	605	-	37,37,51	1.12	3 (8%)	38,38,59	1.02	2 (5%)
3	POV	D	706	-	6,6,51	0.39	0	5,5,59	0.68	0
3	POV	D	704	-	51,51,51	1.19	4 (7%)	57,59,59	1.06	3 (5%)
3	POV	C	601	-	18,18,51	1.40	1 (5%)	23,24,59	0.93	2 (8%)
3	POV	D	701	-	41,41,51	1.56	6 (14%)	42,44,59	1.22	3 (7%)
3	POV	C	603	-	14,14,51	0.40	0	13,13,59	0.85	0
3	POV	D	705	-	27,27,51	0.49	0	31,32,59	0.60	1 (3%)
3	POV	C	602	-	13,13,51	0.39	0	12,12,59	0.78	0
3	POV	C	606	-	51,51,51	1.18	4 (7%)	57,59,59	0.99	3 (5%)
4	ATP	C	607	-	26,33,33	0.62	0	31,52,52	1.14	5 (16%)
3	POV	C	604	-	21,21,51	1.19	2 (9%)	22,22,59	1.13	2 (9%)
3	POV	D	703	-	25,25,51	0.83	1 (4%)	23,23,59	0.78	0
3	POV	D	702	-	43,43,51	0.33	0	45,49,59	0.38	0
4	ATP	D	708	-	26,33,33	0.62	0	31,52,52	1.13	4 (12%)

In the following table, the Chirals column lists the number of chiral outliers, the number of chiral centers analysed, the number of these observed in the model and the number defined in the Chemical Component Dictionary. Similar counts are reported in the Torsion and Rings columns. '-' means no outliers of that kind were identified.

Mol	Type	Chain	Res	Link	Chirals	Torsions	Rings
3	POV	D	707	-	-	11/34/34/55	-
3	POV	C	605	-	-	7/37/37/55	-
3	POV	D	706	-	-	0/4/4/55	-
3	POV	D	704	-	-	15/55/55/55	-
3	POV	C	601	-	-	5/19/19/55	-
3	POV	D	701	-	-	8/40/40/55	-

Continued on next page...

Continued from previous page...

Mol	Type	Chain	Res	Link	Chirals	Torsions	Rings
3	POV	C	603	-	-	0/12/12/55	-
3	POV	D	705	-	-	8/29/29/55	-
3	POV	C	602	-	-	0/11/11/55	-
3	POV	C	606	-	-	18/55/55/55	-
4	ATP	C	607	-	-	6/18/38/38	0/3/3/3
3	POV	C	604	-	-	7/21/21/55	-
3	POV	D	703	-	-	6/21/21/55	-
3	POV	D	702	-	-	11/44/44/55	-
4	ATP	D	708	-	-	3/18/38/38	0/3/3/3

All (21) bond length outliers are listed below:

Mol	Chain	Res	Type	Atoms	Z	Observed(Å)	Ideal(Å)
3	D	701	POV	O21-C2	-5.71	1.40	1.46
3	D	704	POV	C29-C210	3.76	1.53	1.31
3	D	701	POV	C29-C210	3.73	1.53	1.31
3	C	605	POV	C29-C210	3.71	1.53	1.31
3	C	606	POV	C29-C210	3.71	1.53	1.31
3	D	703	POV	C29-C210	3.68	1.53	1.31
3	D	701	POV	O21-C21	3.41	1.40	1.33
3	C	606	POV	O31-C31	2.89	1.41	1.33
3	D	701	POV	P-O12	2.89	1.66	1.54
3	D	704	POV	O31-C31	2.86	1.41	1.33
3	D	701	POV	O31-C31	2.86	1.41	1.33
3	C	604	POV	O31-C31	2.81	1.41	1.33
3	C	605	POV	O31-C31	2.80	1.41	1.33
3	C	604	POV	O21-C21	2.61	1.41	1.33
3	C	605	POV	O21-C21	2.60	1.40	1.33
3	C	601	POV	O21-C21	2.59	1.40	1.33
3	D	704	POV	O21-C2	-2.43	1.40	1.46
3	C	606	POV	O21-C21	2.40	1.41	1.34
3	C	606	POV	O21-C2	-2.40	1.40	1.46
3	D	704	POV	O21-C21	2.34	1.40	1.34
3	D	701	POV	P-O13	-2.26	1.46	1.54

All (25) bond angle outliers are listed below:

Mol	Chain	Res	Type	Atoms	Z	Observed(°)	Ideal(°)
3	D	701	POV	O21-C21-O22	-4.39	119.98	125.57
3	D	704	POV	O21-C21-C22	4.15	120.44	111.50

Continued on next page...

Continued from previous page...

Mol	Chain	Res	Type	Atoms	Z	Observed(°)	Ideal(°)
3	C	606	POV	O21-C21-C22	3.75	119.59	111.50
3	C	604	POV	O31-C31-C32	2.90	121.00	111.91
3	D	701	POV	O31-C31-C32	2.60	120.06	111.91
3	C	605	POV	O21-C21-C22	2.59	120.05	111.91
4	D	708	ATP	O4'-C1'-C2'	-2.55	103.19	106.93
3	C	604	POV	O21-C21-C22	2.52	119.81	111.91
3	C	605	POV	O31-C31-C32	2.51	119.79	111.91
3	D	704	POV	O31-C31-C32	2.50	119.74	111.91
3	D	705	POV	O13-P-O14	2.47	120.33	110.68
3	D	701	POV	O13-P-O14	-2.46	101.06	110.68
3	C	601	POV	O21-C21-C22	2.38	119.39	111.91
4	D	708	ATP	C5-C6-N6	2.29	123.83	120.35
3	C	606	POV	O31-C31-C32	2.28	119.06	111.91
4	C	607	ATP	C5-C6-N6	2.28	123.81	120.35
3	C	601	POV	O13-P-O14	-2.20	101.38	112.24
3	D	704	POV	O13-P-O14	-2.19	101.42	112.24
3	C	606	POV	O13-P-O14	-2.14	101.64	112.24
4	C	607	ATP	O3'-C3'-C2'	-2.04	105.23	111.82
4	C	607	ATP	PB-O3B-PG	2.03	139.80	132.83
4	C	607	ATP	O3'-C3'-C4'	-2.03	105.18	111.05
4	D	708	ATP	O3'-C3'-C2'	-2.00	105.34	111.82
4	C	607	ATP	O4'-C1'-C2'	-2.00	104.00	106.93
4	D	708	ATP	PB-O3B-PG	2.00	139.69	132.83

There are no chirality outliers.

All (105) torsion outliers are listed below:

Mol	Chain	Res	Type	Atoms
3	D	701	POV	C2-C1-O11-P
3	D	701	POV	O22-C21-O21-C2
3	D	702	POV	C1-O11-P-O13
3	D	702	POV	C2-C1-O11-P
3	D	702	POV	C22-C21-O21-C2
3	D	702	POV	O32-C31-O31-C3
3	D	704	POV	C22-C21-O21-C2
3	D	705	POV	O22-C21-O21-C2
3	C	601	POV	O12-C11-C12-N
3	C	606	POV	C11-O12-P-O13
3	C	606	POV	C11-O12-P-O14
4	D	708	ATP	PB-O3B-PG-O3G
4	C	607	ATP	C5'-O5'-PA-O1A
4	C	607	ATP	C5'-O5'-PA-O2A

Continued on next page...

Continued from previous page...

Mol	Chain	Res	Type	Atoms
4	C	607	ATP	C5'-O5'-PA-O3A
4	C	607	ATP	C4'-C5'-O5'-PA
3	D	707	POV	O32-C31-O31-C3
3	C	604	POV	O32-C31-O31-C3
3	D	704	POV	O22-C21-O21-C2
3	C	604	POV	C32-C31-O31-C3
3	D	705	POV	C22-C21-O21-C2
3	D	707	POV	C32-C31-O31-C3
3	D	702	POV	O22-C21-O21-C2
3	D	707	POV	C22-C21-O21-C2
3	D	707	POV	O22-C21-O21-C2
3	C	605	POV	C211-C210-C29-C28
3	D	707	POV	C211-C210-C29-C28
3	D	705	POV	C31-C32-C33-C34
3	D	701	POV	C211-C210-C29-C28
3	C	606	POV	C11-O12-P-O11
3	C	601	POV	O11-C1-C2-O21
3	C	605	POV	C214-C215-C216-C217
3	C	605	POV	C31-C32-C33-C34
3	D	704	POV	C311-C310-C39-C38
3	D	703	POV	C37-C38-C39-C310
3	C	606	POV	C36-C37-C38-C39
3	C	606	POV	C22-C23-C24-C25
3	C	604	POV	C22-C21-O21-C2
3	D	704	POV	C39-C310-C311-C312
3	D	703	POV	C24-C25-C26-C27
3	C	606	POV	C22-C21-O21-C2
3	C	606	POV	C39-C310-C311-C312
3	C	606	POV	O22-C21-O21-C2
3	D	701	POV	C32-C33-C34-C35
3	D	705	POV	C32-C31-O31-C3
3	C	605	POV	C310-C311-C312-C313
3	C	604	POV	O22-C21-O21-C2
3	C	605	POV	O21-C2-C3-O31
3	C	605	POV	C34-C35-C36-C37
3	C	604	POV	O21-C2-C3-O31
3	C	606	POV	C34-C35-C36-C37
3	D	705	POV	O32-C31-O31-C3
3	D	704	POV	C2-C3-O31-C31
3	D	702	POV	C1-O11-P-O12
3	D	701	POV	O11-C1-C2-C3
3	D	707	POV	C22-C23-C24-C25

Continued on next page...

Continued from previous page...

Mol	Chain	Res	Type	Atoms
3	D	704	POV	C1-C2-C3-O31
3	D	705	POV	C1-C2-C3-O31
3	C	606	POV	C1-C2-C3-O31
3	C	606	POV	C215-C216-C217-C218
4	D	708	ATP	O4'-C4'-C5'-O5'
3	D	704	POV	C37-C38-C39-C310
3	C	606	POV	O21-C2-C3-O31
3	D	704	POV	C211-C210-C29-C28
3	D	707	POV	C33-C34-C35-C36
3	D	703	POV	C212-C213-C214-C215
3	D	704	POV	C33-C34-C35-C36
3	D	701	POV	C23-C24-C25-C26
3	D	703	POV	C310-C311-C312-C313
3	C	601	POV	C2-C1-O11-P
3	C	605	POV	C33-C34-C35-C36
3	D	701	POV	O11-C1-C2-O21
4	C	607	ATP	PG-O3B-PB-O2B
3	D	707	POV	C2-C3-O31-C31
3	C	601	POV	C11-O12-P-O11
3	D	702	POV	C1-O11-P-O14
3	D	702	POV	C12-C11-O12-P
3	C	606	POV	C12-C11-O12-P
3	D	702	POV	O12-C11-C12-N
3	D	704	POV	O12-C11-C12-N
3	D	707	POV	O21-C2-C3-O31
3	D	704	POV	C1-C2-O21-C21
3	D	704	POV	O21-C2-C3-O31
3	D	705	POV	O21-C2-C3-O31
3	D	705	POV	C24-C25-C26-C27
3	D	702	POV	C11-O12-P-O11
3	C	606	POV	C1-O11-P-O12
3	D	707	POV	C27-C28-C29-C210
3	C	606	POV	C32-C33-C34-C35
3	D	701	POV	O21-C2-C3-O31
3	D	702	POV	C34-C35-C36-C37
3	D	703	POV	C36-C37-C38-C39
3	C	606	POV	C212-C213-C214-C215
3	D	703	POV	C311-C312-C313-C314
3	C	604	POV	C34-C35-C36-C37
4	C	607	ATP	PG-O3B-PB-O1B
3	C	606	POV	C35-C36-C37-C38
3	D	704	POV	C11-O12-P-O14

Continued on next page...

Continued from previous page...

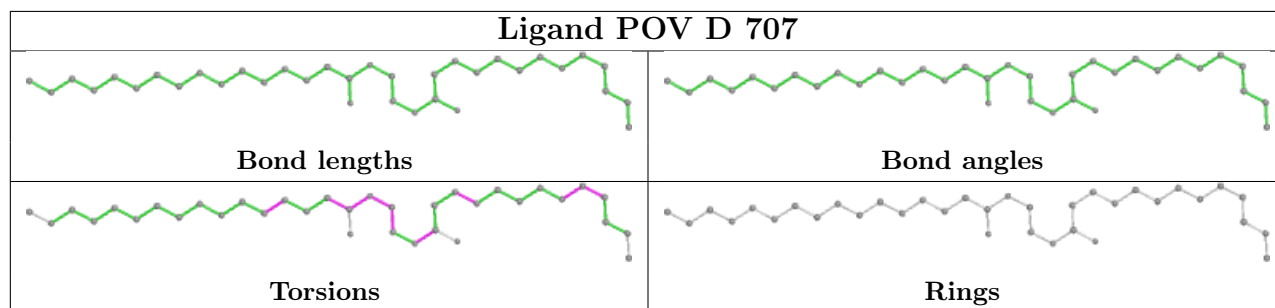
Mol	Chain	Res	Type	Atoms
3	C	601	POV	C11-O12-P-O14
4	D	708	ATP	PB-O3B-PG-O1G
3	D	704	POV	C32-C33-C34-C35
3	C	604	POV	O31-C31-C32-C33
3	D	704	POV	O31-C31-C32-C33
3	D	707	POV	O31-C31-C32-C33
3	C	606	POV	C29-C210-C211-C212

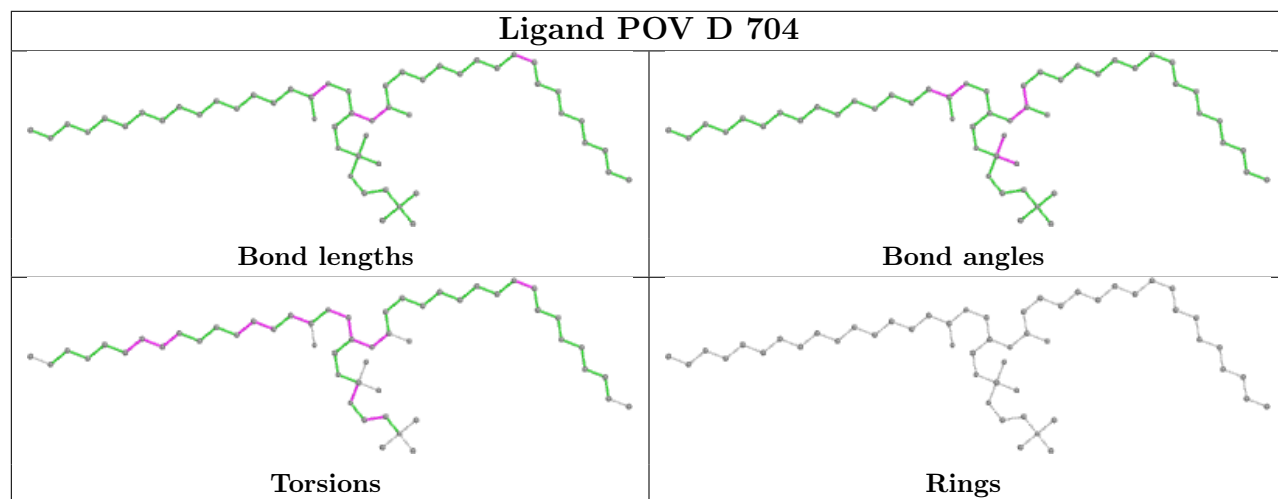
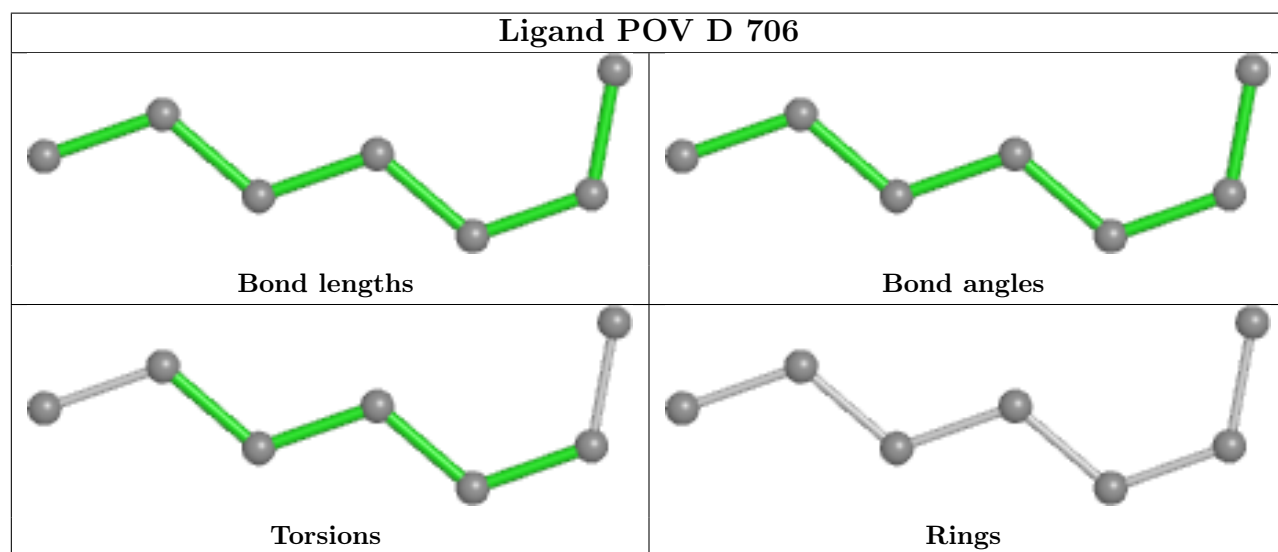
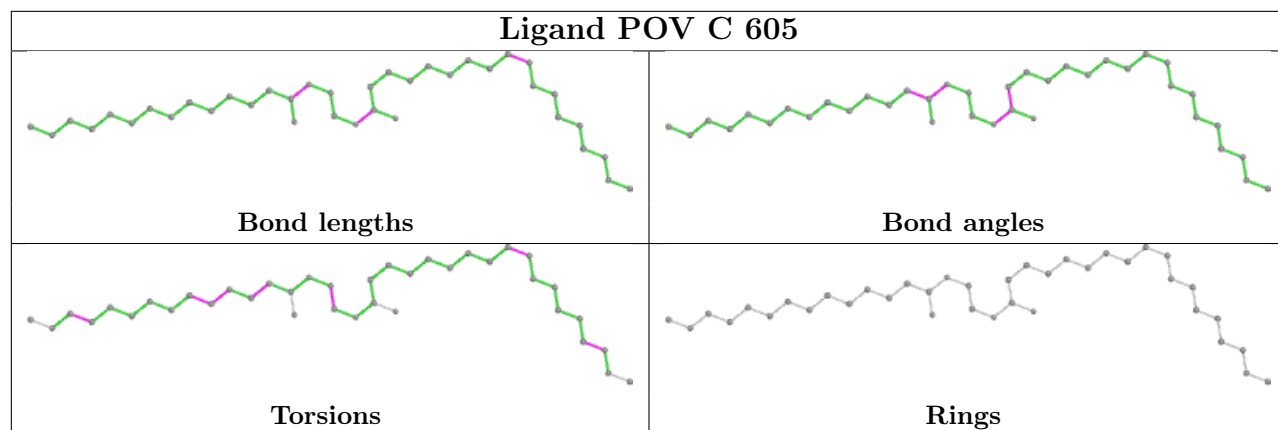
There are no ring outliers.

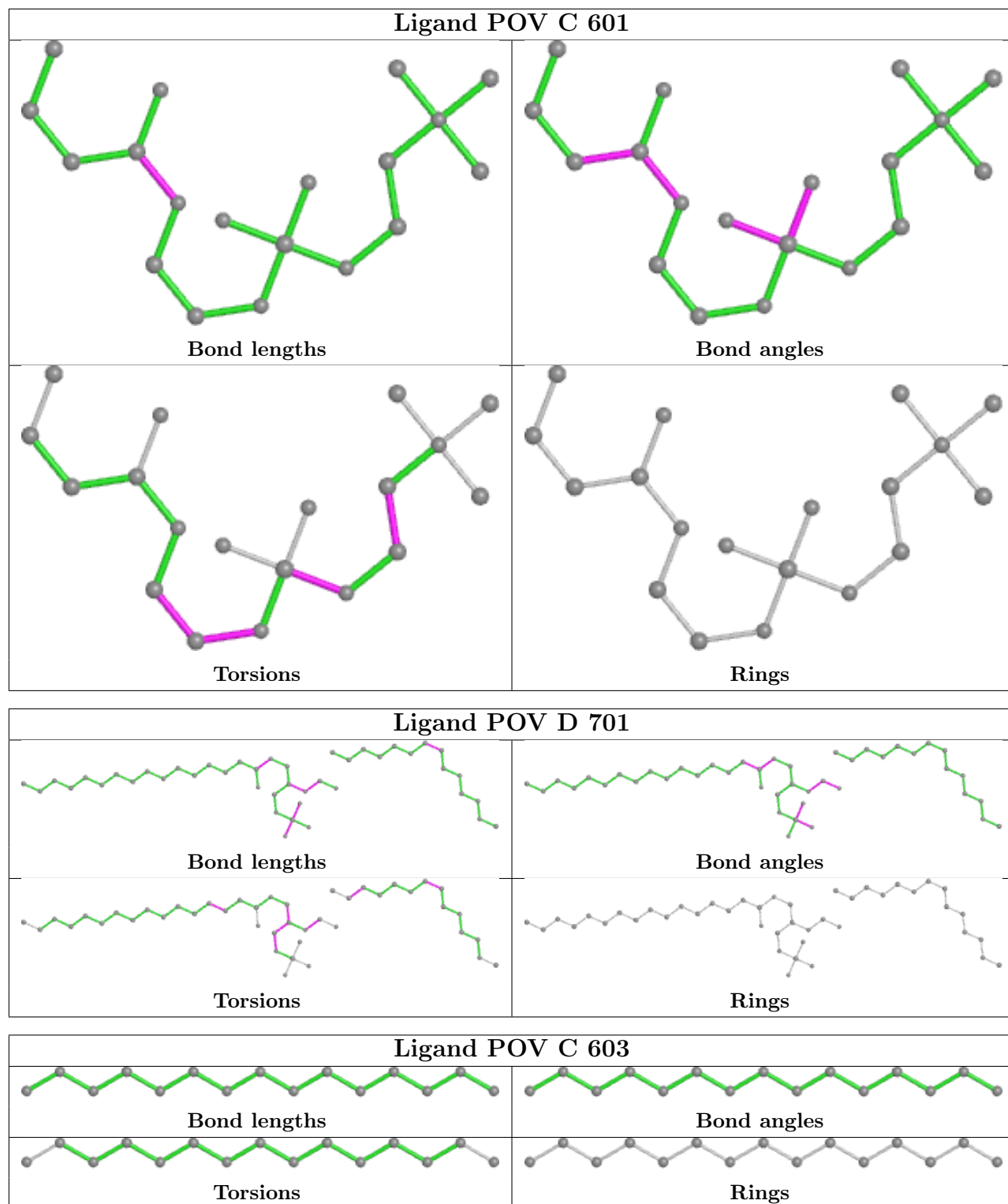
2 monomers are involved in 2 short contacts:

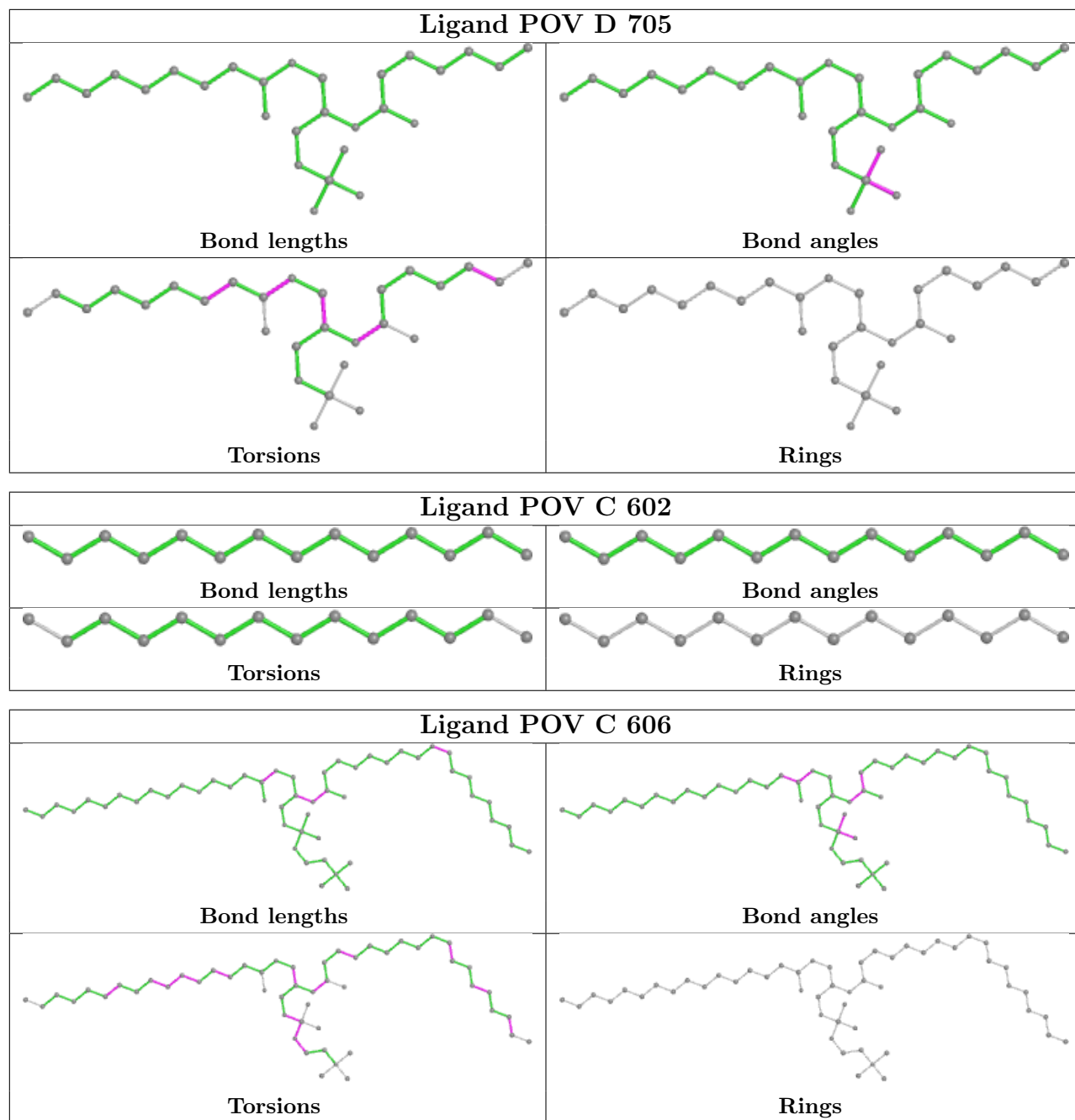
Mol	Chain	Res	Type	Clashes	Symm-Clashes
3	D	701	POV	1	0
3	C	606	POV	1	0

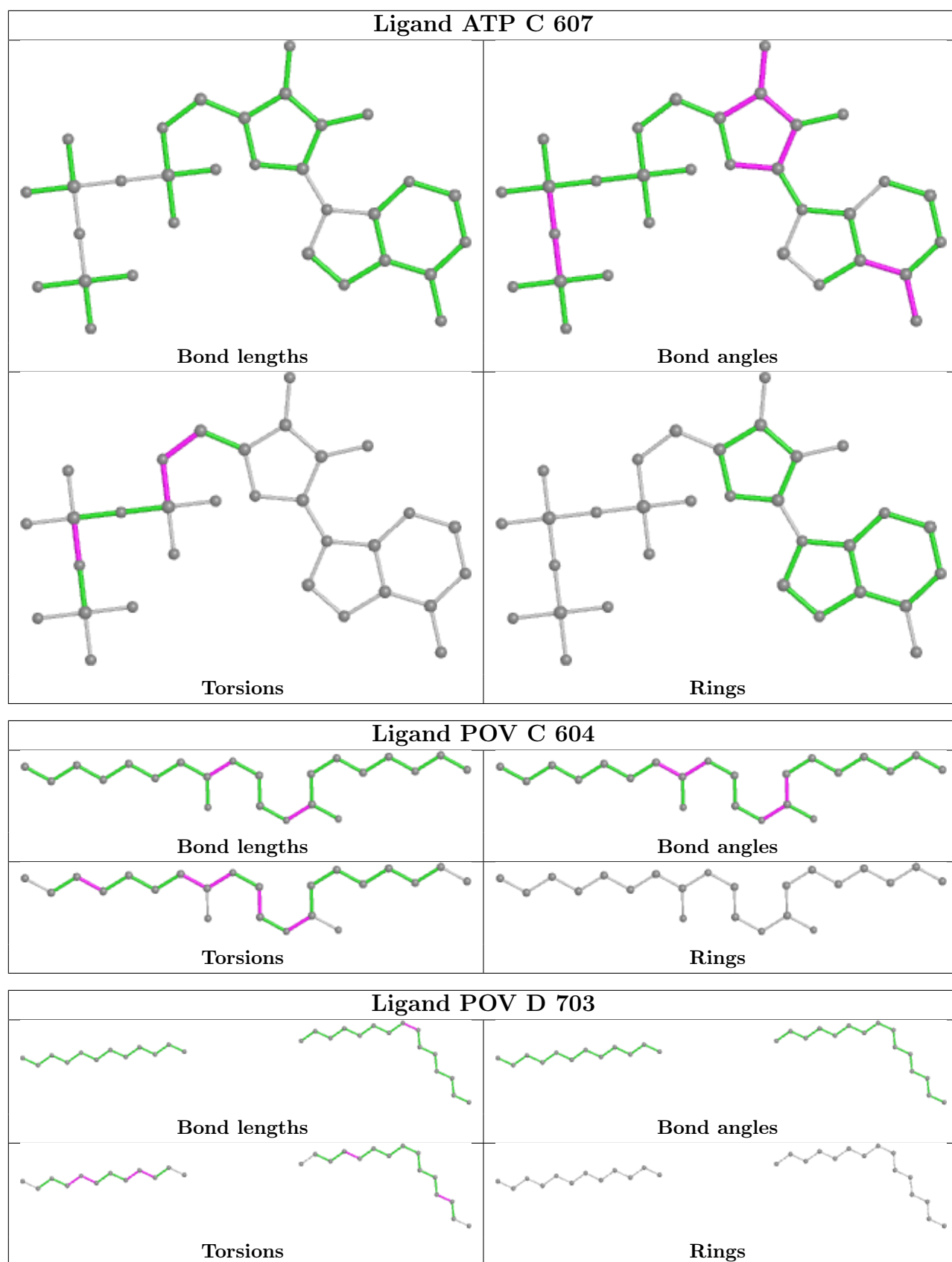
The following is a two-dimensional graphical depiction of Mogul quality analysis of bond lengths, bond angles, torsion angles, and ring geometry for all instances of the Ligand of Interest. In addition, ligands with molecular weight > 250 and outliers as shown on the validation Tables will also be included. For torsion angles, if less than 5% of the Mogul distribution of torsion angles is within 10 degrees of the torsion angle in question, then that torsion angle is considered an outlier. Any bond that is central to one or more torsion angles identified as an outlier by Mogul will be highlighted in the graph. For rings, the root-mean-square deviation (RMSD) between the ring in question and similar rings identified by Mogul is calculated over all ring torsion angles. If the average RMSD is greater than 60 degrees and the minimal RMSD between the ring in question and any Mogul-identified rings is also greater than 60 degrees, then that ring is considered an outlier. The outliers are highlighted in purple. The color gray indicates Mogul did not find sufficient equivalents in the CSD to analyse the geometry.

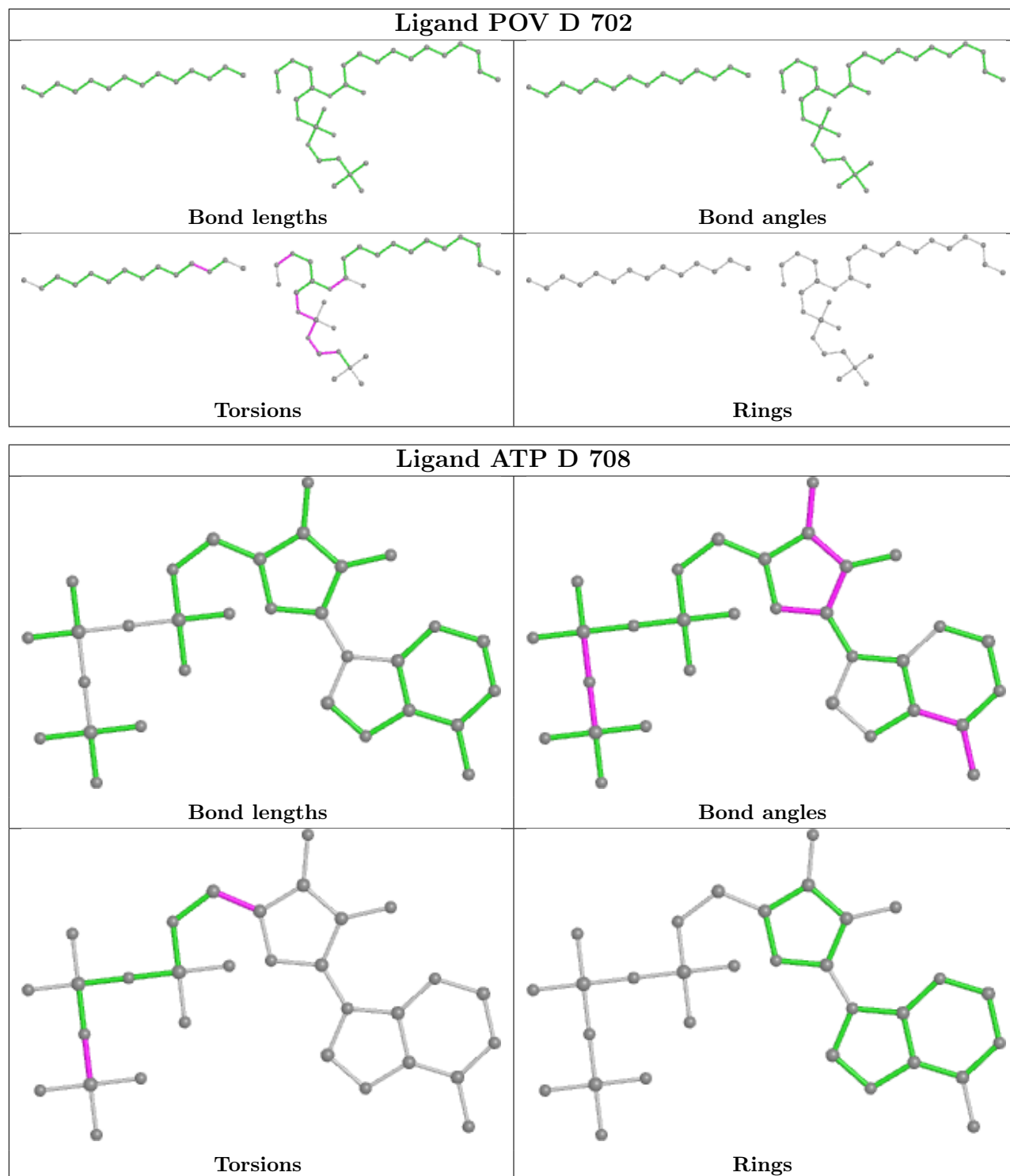












5.7 Other polymers [\(i\)](#)

There are no such residues in this entry.

5.8 Polymer linkage issues

There are no chain breaks in this entry.

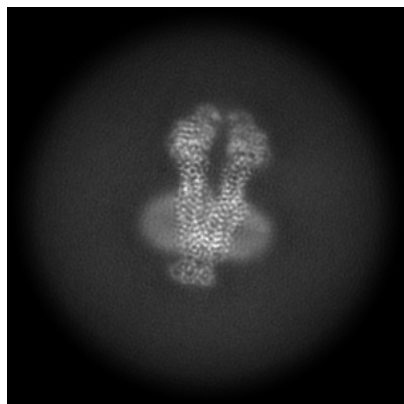
6 Map visualisation [i](#)

This section contains visualisations of the EMDB entry EMD-41004. These allow visual inspection of the internal detail of the map and identification of artifacts.

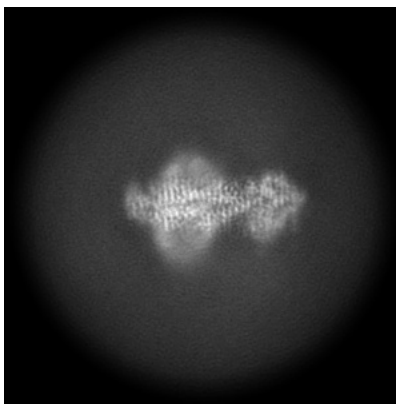
Images derived from a raw map, generated by summing the deposited half-maps, are presented below the corresponding image components of the primary map to allow further visual inspection and comparison with those of the primary map.

6.1 Orthogonal projections [i](#)

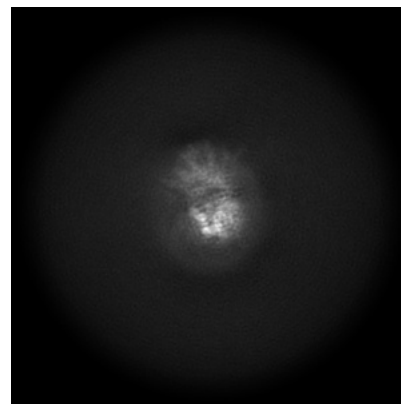
6.1.1 Primary map



X

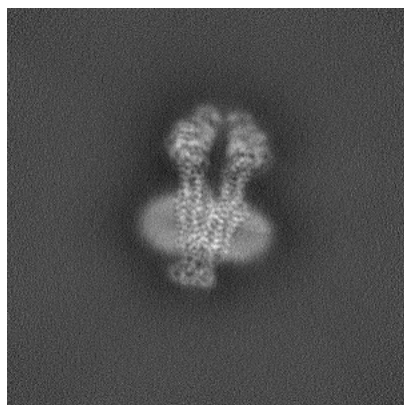


Y

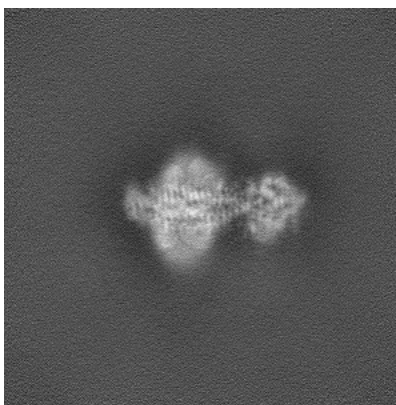


Z

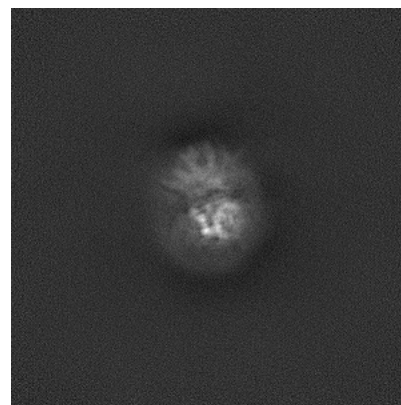
6.1.2 Raw map



X



Y

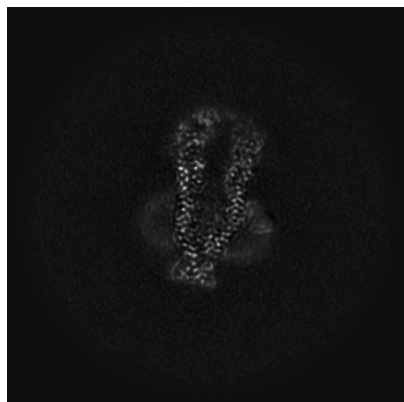


Z

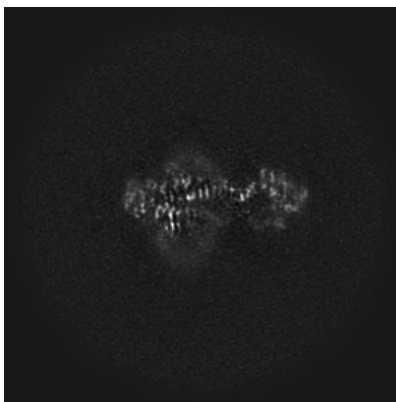
The images above show the map projected in three orthogonal directions.

6.2 Central slices [i](#)

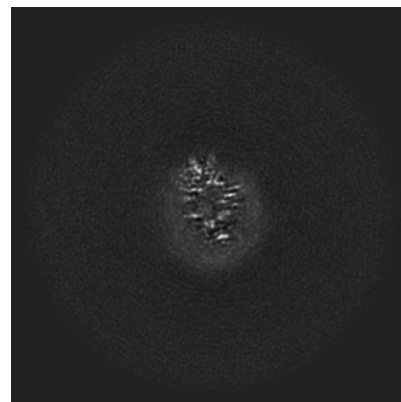
6.2.1 Primary map



X Index: 240

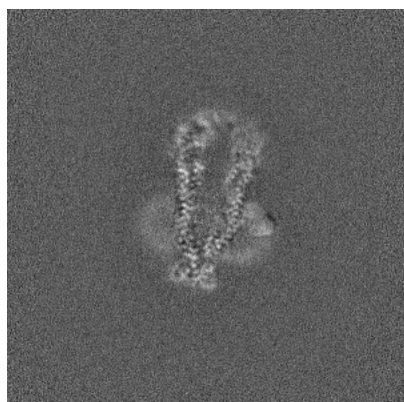


Y Index: 240

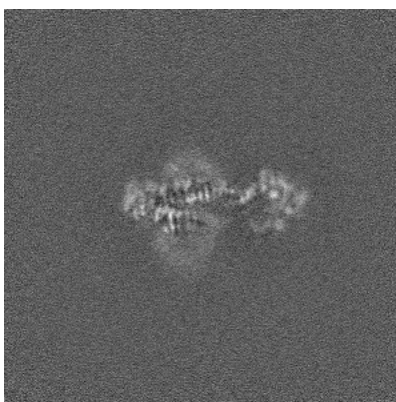


Z Index: 240

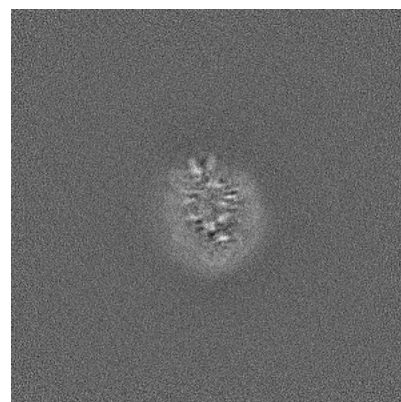
6.2.2 Raw map



X Index: 240



Y Index: 240

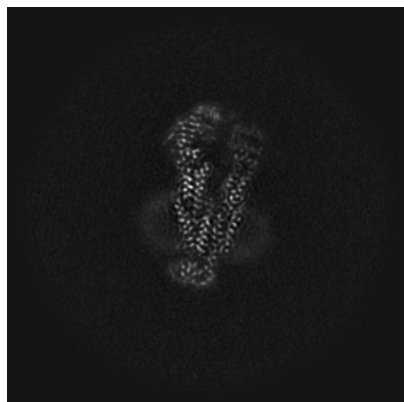


Z Index: 240

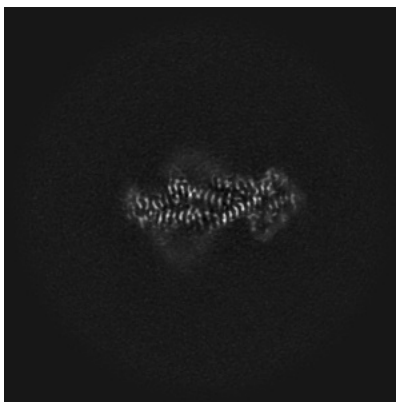
The images above show central slices of the map in three orthogonal directions.

6.3 Largest variance slices [i](#)

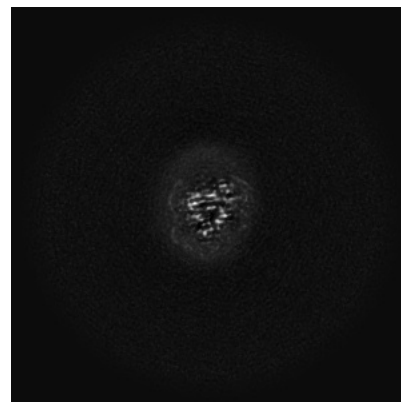
6.3.1 Primary map



X Index: 250

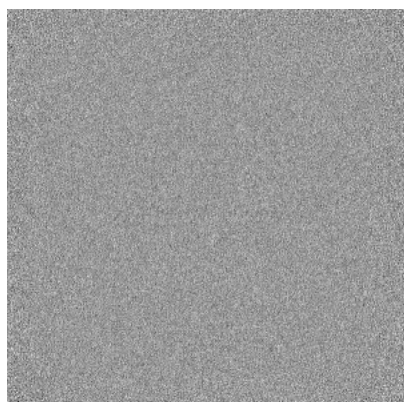


Y Index: 225

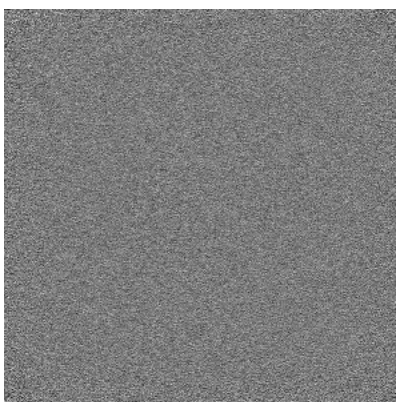


Z Index: 194

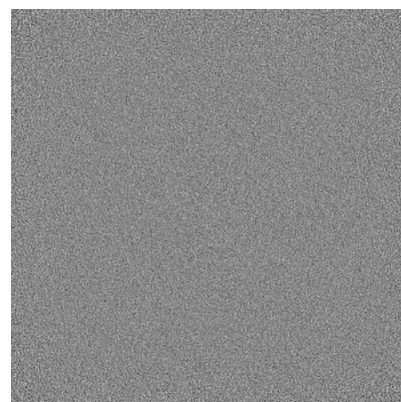
6.3.2 Raw map



X Index: 0



Y Index: 0

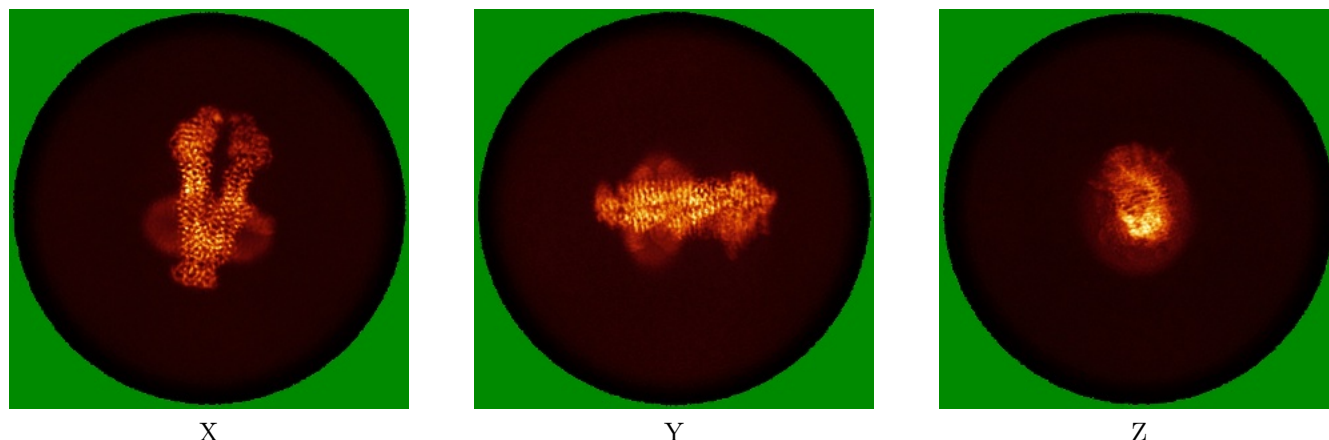


Z Index: 0

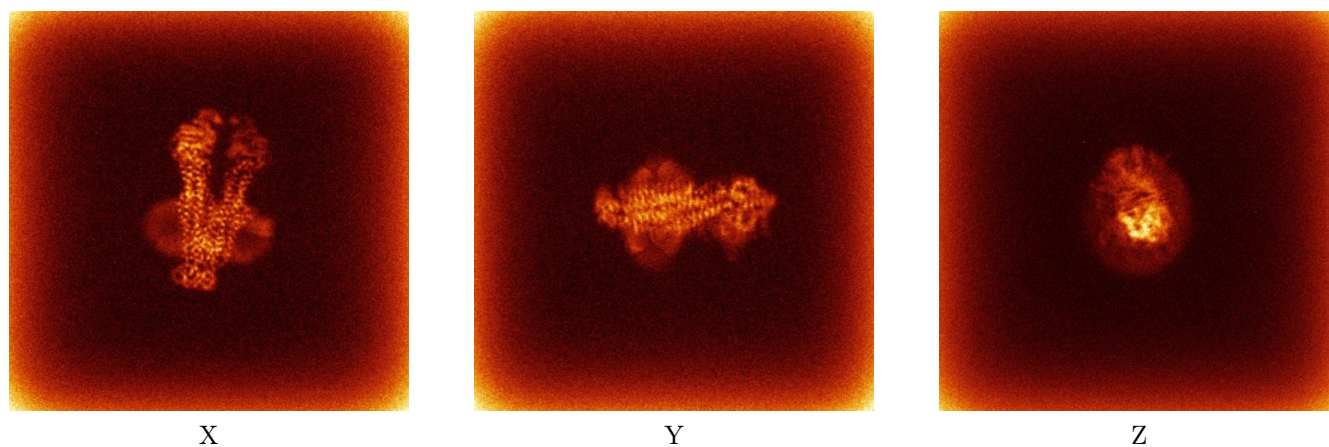
The images above show the largest variance slices of the map in three orthogonal directions.

6.4 Orthogonal standard-deviation projections (False-color) [i](#)

6.4.1 Primary map



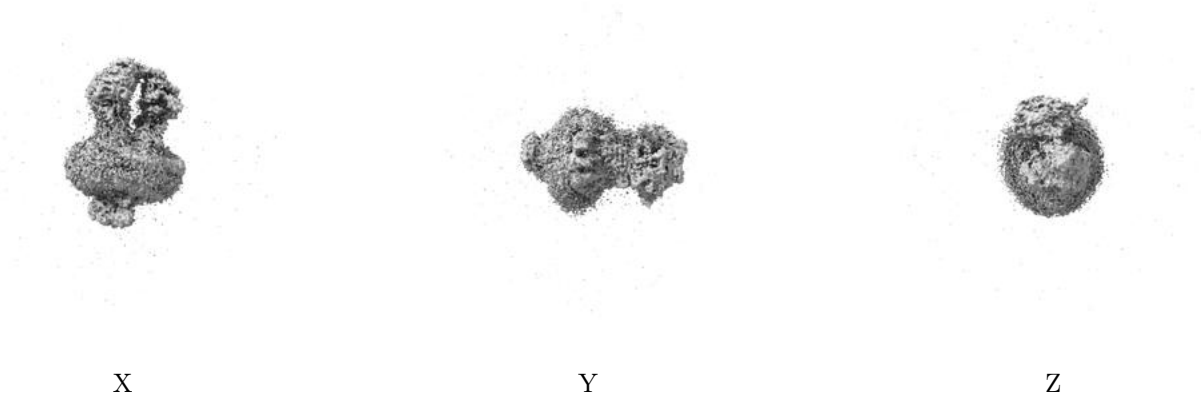
6.4.2 Raw map



The images above show the map standard deviation projections with false color in three orthogonal directions. Minimum values are shown in green, max in blue, and dark to light orange shades represent small to large values respectively.

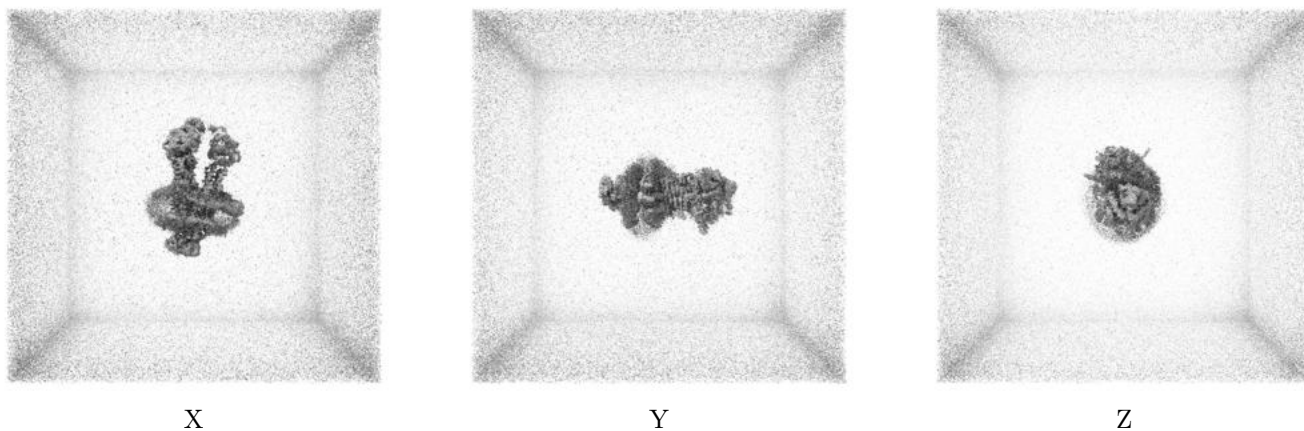
6.5 Orthogonal surface views [i](#)

6.5.1 Primary map



The images above show the 3D surface view of the map at the recommended contour level 0.13. These images, in conjunction with the slice images, may facilitate assessment of whether an appropriate contour level has been provided.

6.5.2 Raw map



These images show the 3D surface of the raw map. The raw map's contour level was selected so that its surface encloses the same volume as the primary map does at its recommended contour level.

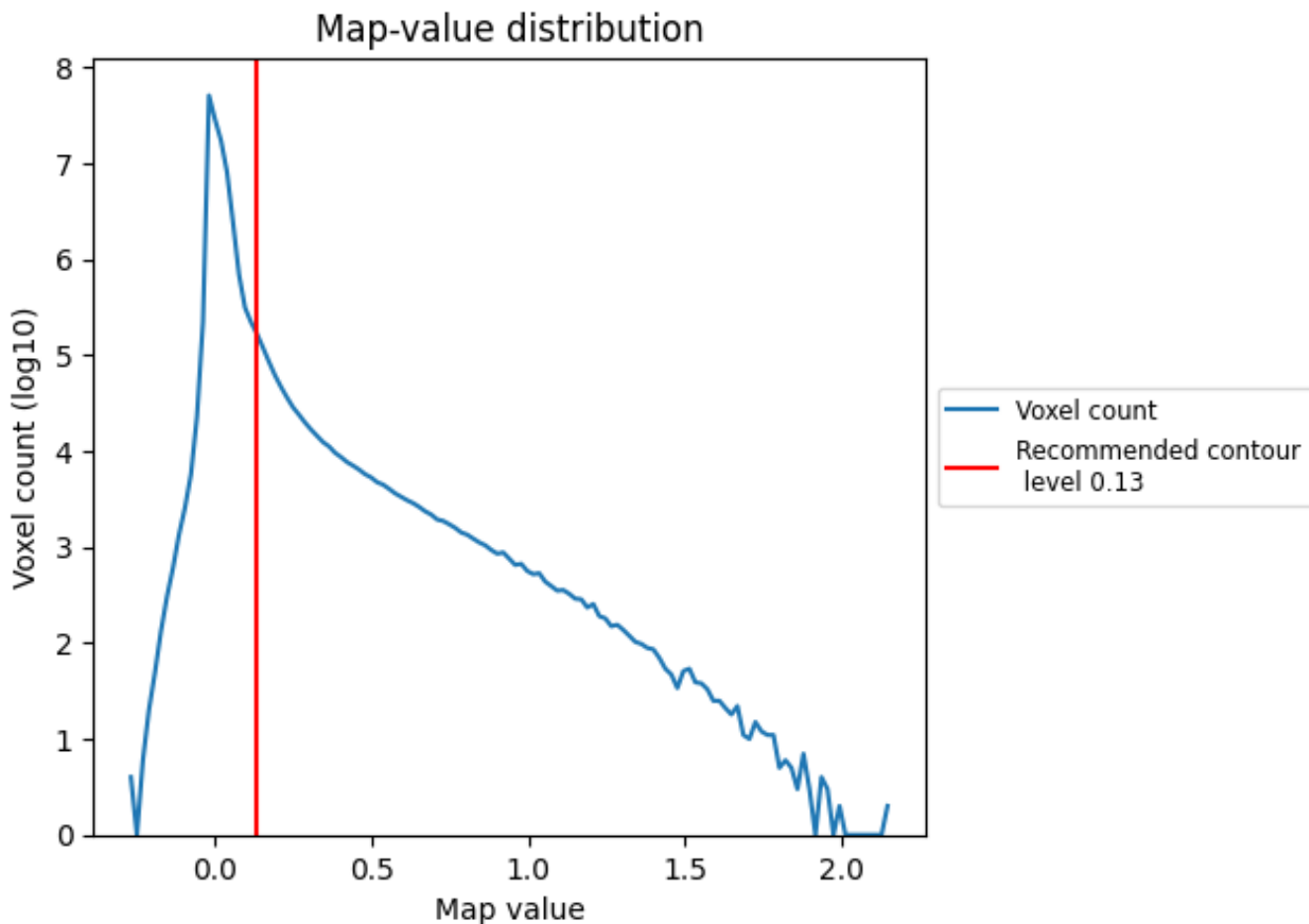
6.6 Mask visualisation [i](#)

This section was not generated. No masks/segmentation were deposited.

7 Map analysis [i](#)

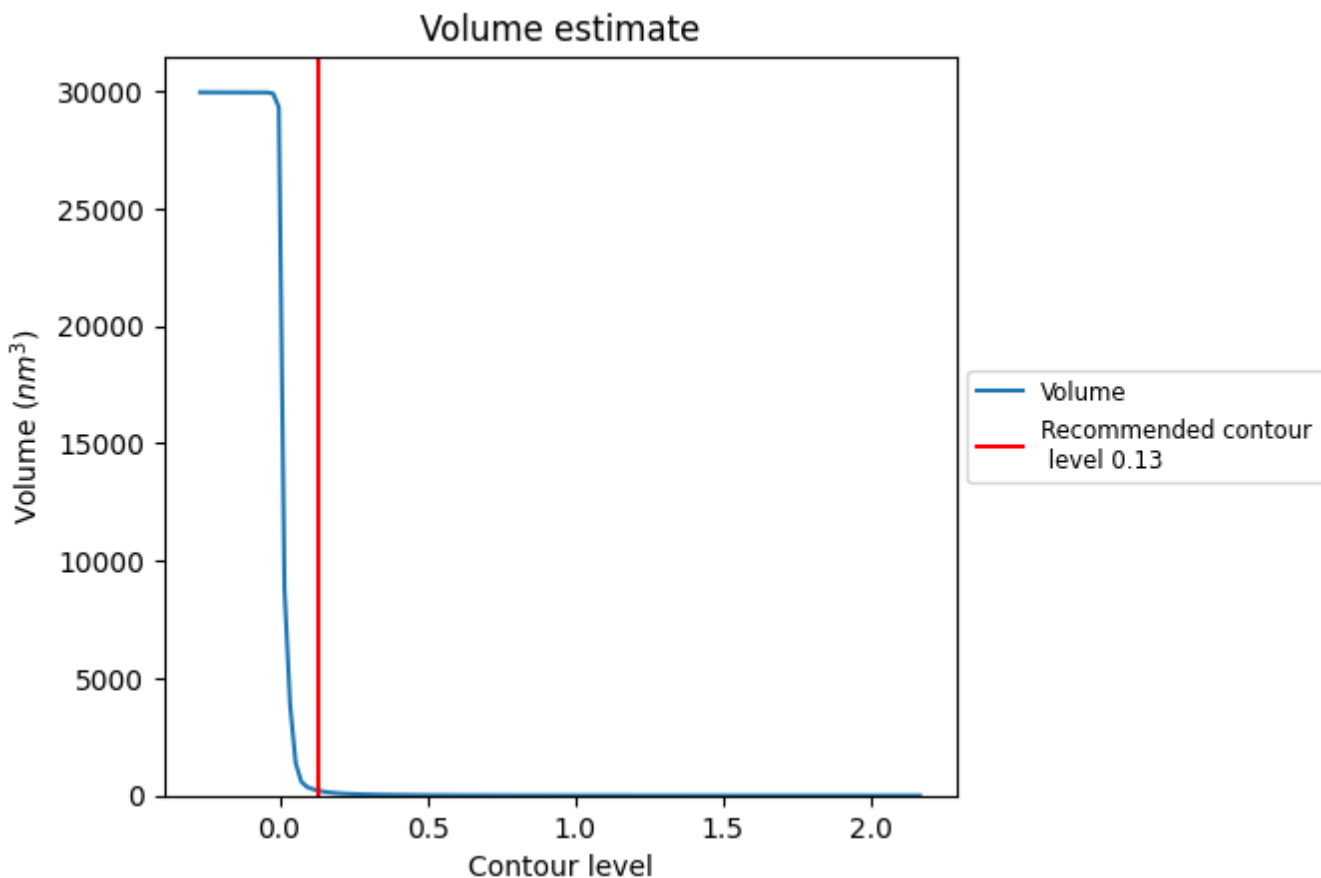
This section contains the results of statistical analysis of the map.

7.1 Map-value distribution [i](#)



The map-value distribution is plotted in 128 intervals along the x-axis. The y-axis is logarithmic. A spike in this graph at zero usually indicates that the volume has been masked.

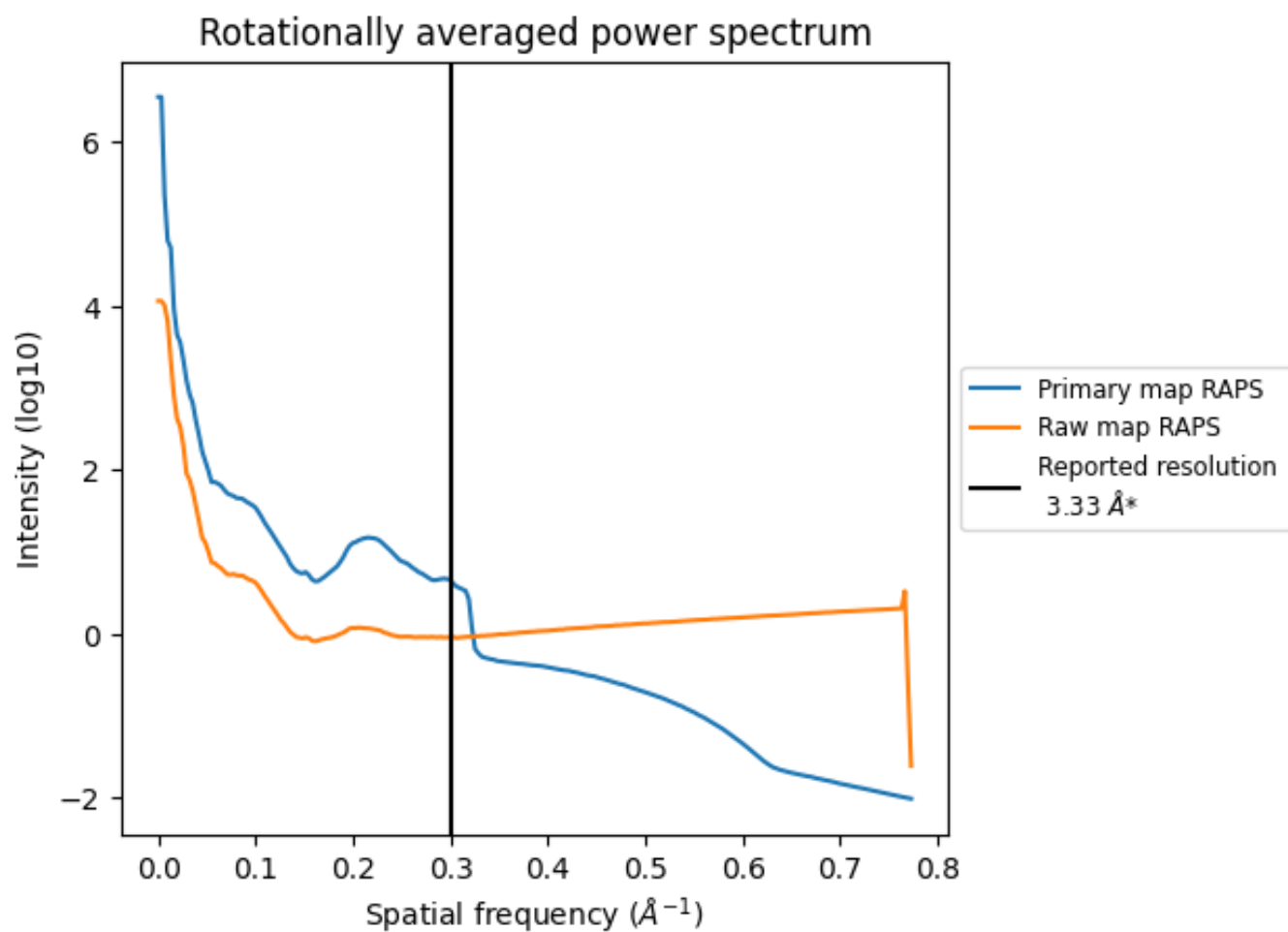
7.2 Volume estimate [i](#)



The volume at the recommended contour level is 217 nm^3 ; this corresponds to an approximate mass of 196 kDa.

The volume estimate graph shows how the enclosed volume varies with the contour level. The recommended contour level is shown as a vertical line and the intersection between the line and the curve gives the volume of the enclosed surface at the given level.

7.3 Rotationally averaged power spectrum i

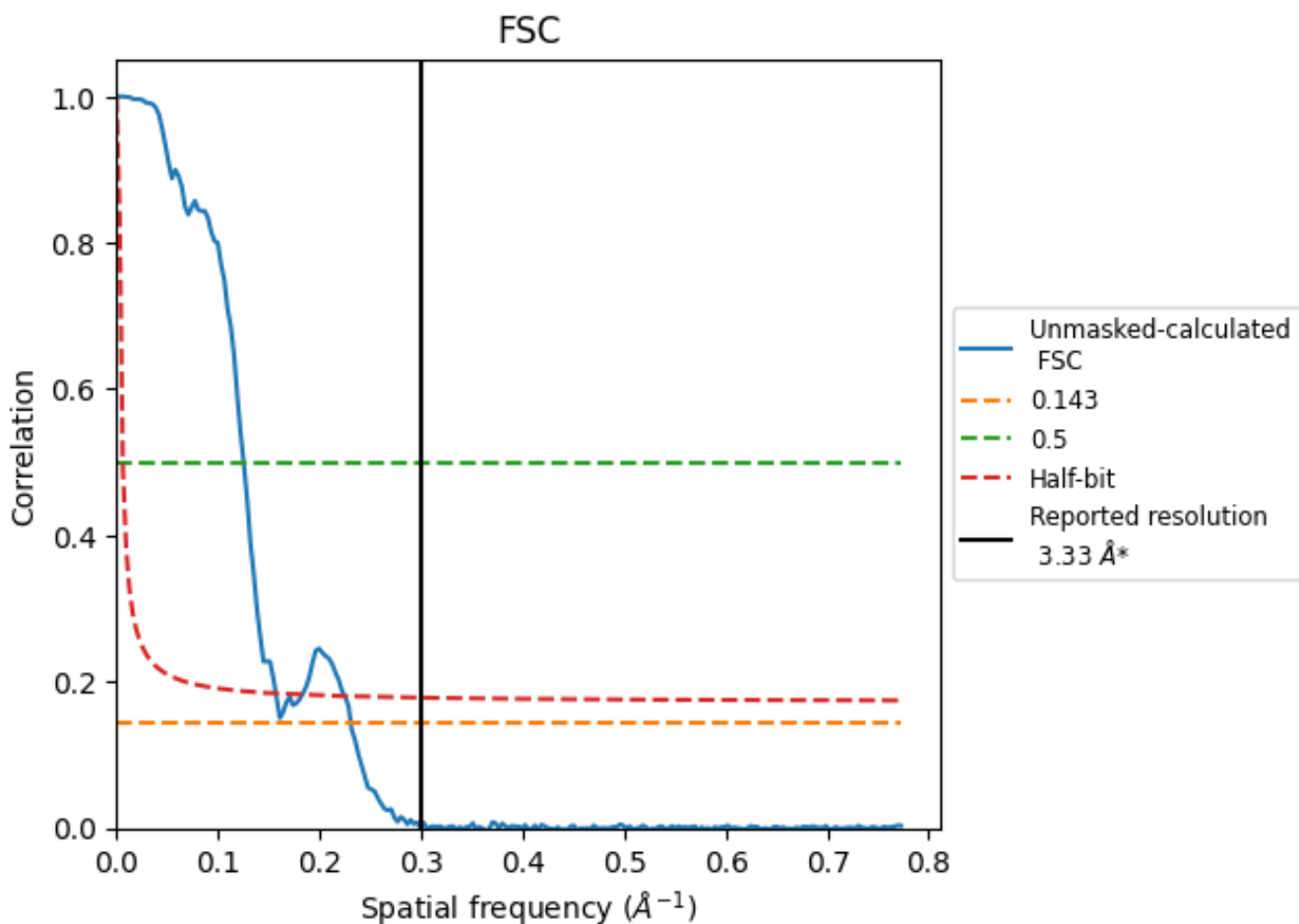


*Reported resolution corresponds to spatial frequency of 0.300 Å⁻¹

8 Fourier-Shell correlation [i](#)

Fourier-Shell Correlation (FSC) is the most commonly used method to estimate the resolution of single-particle and subtomogram-averaged maps. The shape of the curve depends on the imposed symmetry, mask and whether or not the two 3D reconstructions used were processed from a common reference. The reported resolution is shown as a black line. A curve is displayed for the half-bit criterion in addition to lines showing the 0.143 gold standard cut-off and 0.5 cut-off.

8.1 FSC [i](#)



*Reported resolution corresponds to spatial frequency of 0.300 Å⁻¹

8.2 Resolution estimates [i](#)

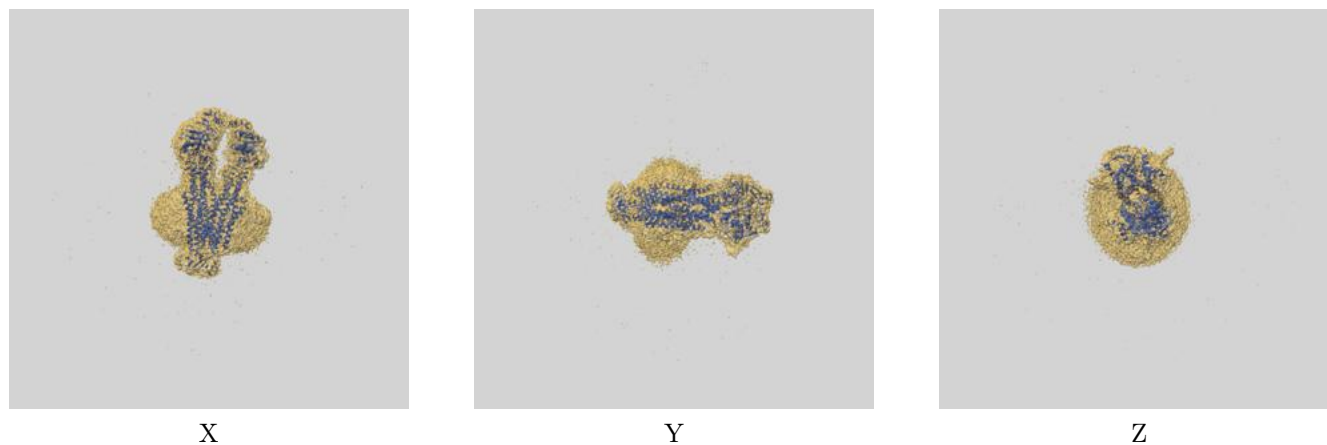
Resolution estimate (Å)	Estimation criterion (FSC cut-off)		
	0.143	0.5	Half-bit
Reported by author	3.33	-	-
Author-provided FSC curve	-	-	-
Unmasked-calculated*	4.33	7.98	6.37

*Resolution estimate based on FSC curve calculated by comparison of deposited half-maps. The value from deposited half-maps intersecting FSC 0.143 CUT-OFF 4.33 differs from the reported value 3.33 by more than 10 %

9 Map-model fit [i](#)

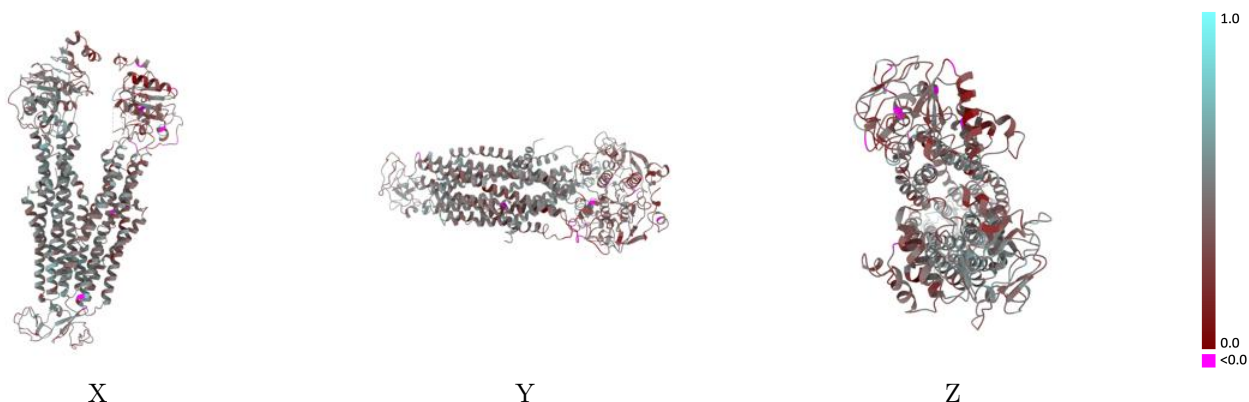
This section contains information regarding the fit between EMDB map EMD-41004 and PDB model 8T3K. Per-residue inclusion information can be found in section 3 on page 7.

9.1 Map-model overlay [i](#)



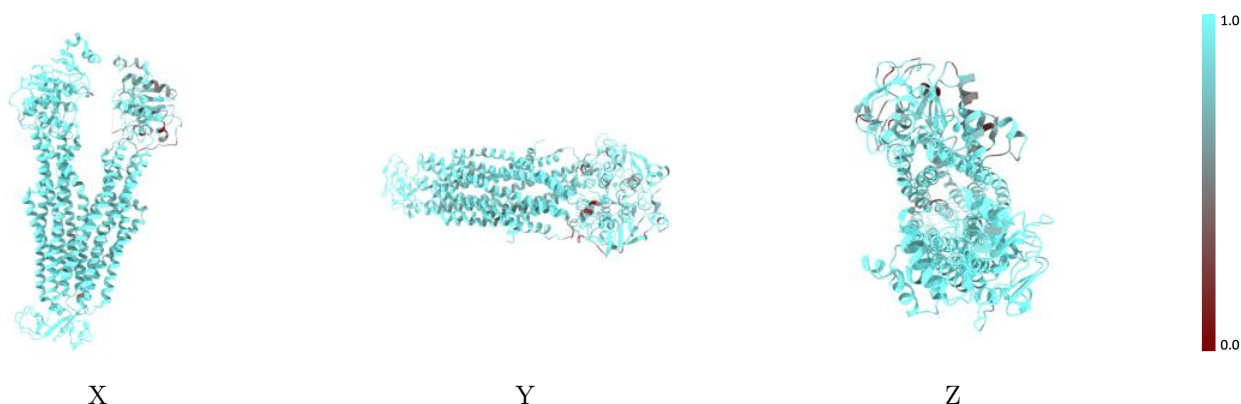
The images above show the 3D surface view of the map at the recommended contour level 0.13 at 50% transparency in yellow overlaid with a ribbon representation of the model coloured in blue. These images allow for the visual assessment of the quality of fit between the atomic model and the map.

9.2 Q-score mapped to coordinate model [i](#)



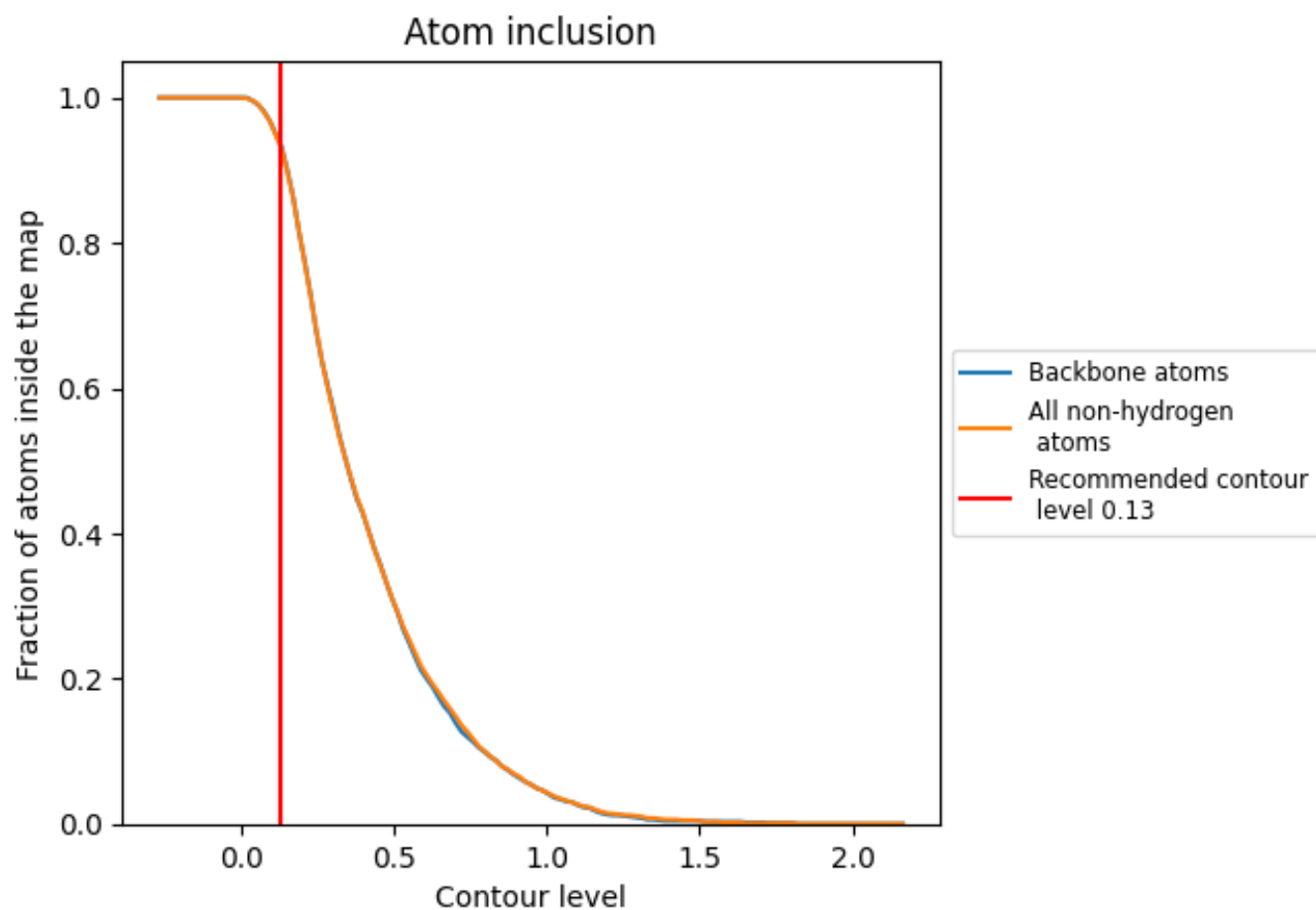
The images above show the model with each residue coloured according to its Q-score. This shows their resolvability in the map with higher Q-score values reflecting better resolvability. Please note: Q-score is calculating the resolvability of atoms, and thus high values are only expected at resolutions at which atoms can be resolved. Low Q-score values may therefore be expected for many entries.

9.3 Atom inclusion mapped to coordinate model [i](#)



The images above show the model with each residue coloured according to its atom inclusion. This shows to what extent they are inside the map at the recommended contour level (0.13).







9.4 Atom inclusion [i](#)



At the recommended contour level, 93% of all backbone atoms, 93% of all non-hydrogen atoms, are inside the map.

9.5 Map-model fit summary

The table lists the average atom inclusion at the recommended contour level (0.13) and Q-score for the entire model and for each chain.

Chain	Atom inclusion	Q-score
All	 0.9310	 0.4180
C	 0.8820	 0.3920
D	 0.9610	 0.4390

