



# wwPDB X-ray Structure Validation Summary Report ⓘ

May 27, 2024 – 03:59 PM JST

PDB ID : 8YIB  
Title : Staphylococcus aureus lipase -PSA complex - covalent bonding state  
Authors : Kitadokoro, J.; Kamitani, S.; Kitadokoro, K.  
Deposited on : 2024-02-29  
Resolution : 2.27 Å(reported)

This is a wwPDB X-ray Structure Validation Summary Report for a publicly released PDB entry.

We welcome your comments at [validation@mail.wwpdb.org](mailto:validation@mail.wwpdb.org)

A user guide is available at

<https://www.wwpdb.org/validation/2017/XrayValidationReportHelp>

with specific help available everywhere you see the ⓘ symbol.

The types of validation reports are described at

<http://www.wwpdb.org/validation/2017/FAQs#types>.

---

The following versions of software and data (see [references ⓘ](#)) were used in the production of this report:

MolProbity : 4.02b-467  
Mogul : 1.8.5 (274361), CSD as541be (2020)  
Xtrriage (Phenix) : 1.13  
EDS : 2.36.2  
buster-report : 1.1.7 (2018)  
Percentile statistics : 20191225.v01 (using entries in the PDB archive December 25th 2019)  
Refmac : 5.8.0158  
CCP4 : 7.0.044 (Gargrove)  
Ideal geometry (proteins) : Engh & Huber (2001)  
Ideal geometry (DNA, RNA) : Parkinson et al. (1996)  
Validation Pipeline (wwPDB-VP) : 2.36.2

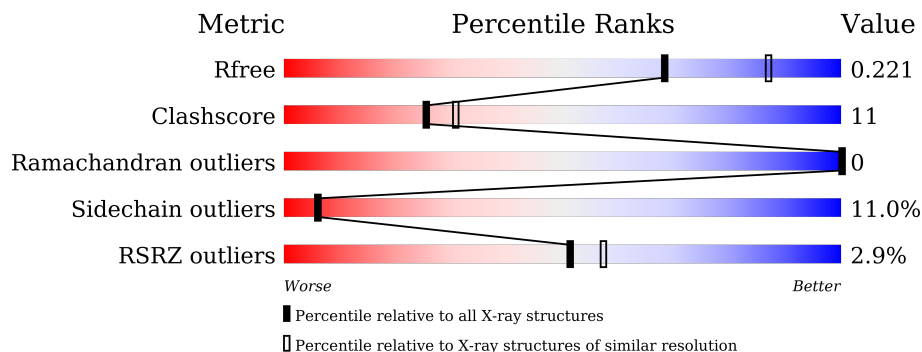
# 1 Overall quality at a glance

The following experimental techniques were used to determine the structure:

*X-RAY DIFFRACTION*

The reported resolution of this entry is 2.27 Å.

Percentile scores (ranging between 0-100) for global validation metrics of the entry are shown in the following graphic. The table shows the number of entries on which the scores are based.



Metric	Whole archive (#Entries)	Similar resolution (#Entries, resolution range(Å))
$R_{free}$	130704	6980 (2.30-2.26)
Clashscore	141614	7711 (2.30-2.26)
Ramachandran outliers	138981	7597 (2.30-2.26)
Sidechain outliers	138945	7598 (2.30-2.26)
RSRZ outliers	127900	6849 (2.30-2.26)

The table below summarises the geometric issues observed across the polymeric chains and their fit to the electron density. The red, orange, yellow and green segments of the lower bar indicate the fraction of residues that contain outliers for  $\geq 3$ , 2, 1 and 0 types of geometric quality criteria respectively. A grey segment represents the fraction of residues that are not modelled. The numeric value for each fraction is indicated below the corresponding segment, with a dot representing fractions  $\leq 5\%$ . The upper red bar (where present) indicates the fraction of residues that have poor fit to the electron density. The numeric value is given above the bar.

Mol	Chain	Length	Quality of chain
1	A	408	 76% 14% • 6%
1	B	408	 73% 16% • 6%

The following table lists non-polymeric compounds, carbohydrate monomers and non-standard residues in protein, DNA, RNA chains that are outliers for geometric or electron-density-fit criteria:

Mol	Type	Chain	Res	Chirality	Geometry	Clashes	Electron density
12	GOL	B	412	-	-	-	X
2	FMT	A	416	-	-	X	-
2	FMT	B	402	-	-	X	-
2	FMT	B	414	-	-	-	X
2	FMT	B	415	-	-	-	X

## 2 Entry composition i

There are 15 unique types of molecules in this entry. The entry contains 6438 atoms, of which 0 are hydrogens and 0 are deuteriums.

In the tables below, the ZeroOcc column contains the number of atoms modelled with zero occupancy, the AltConf column contains the number of residues with at least one atom in alternate conformation and the Trace column contains the number of residues modelled with at most 2 atoms.

- Molecule 1 is a protein called Lipase 2.

Mol	Chain	Residues	Atoms					ZeroOcc	AltConf	Trace
			Total	C	N	O	S			
1	A	382	3024	1925	527	563	9	0	0	0
1	B	382	3024	1925	527	563	9	0	0	0

There are 26 discrepancies between the modelled and reference sequences:

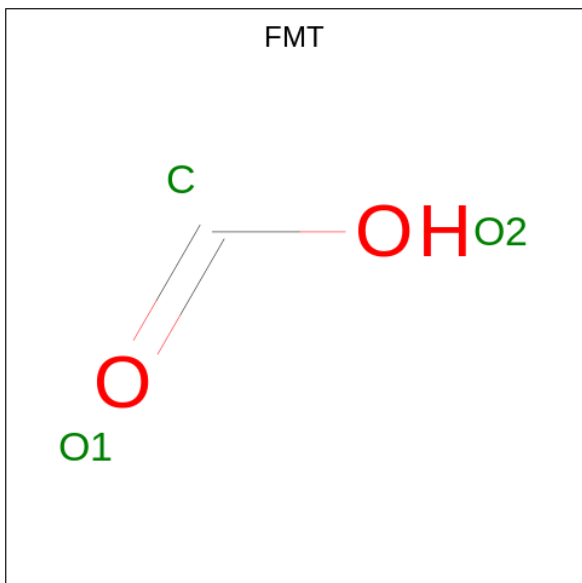
Chain	Residue	Modelled	Actual	Comment	Reference
A	-13	MET	-	expression tag	UNP A0A0U1MWF9
A	-12	ASN	-	expression tag	UNP A0A0U1MWF9
A	-11	HIS	-	expression tag	UNP A0A0U1MWF9
A	-10	LYS	-	expression tag	UNP A0A0U1MWF9
A	-9	VAL	-	expression tag	UNP A0A0U1MWF9
A	-8	HIS	-	expression tag	UNP A0A0U1MWF9
A	-7	HIS	-	expression tag	UNP A0A0U1MWF9
A	-6	HIS	-	expression tag	UNP A0A0U1MWF9
A	-5	HIS	-	expression tag	UNP A0A0U1MWF9
A	-4	HIS	-	expression tag	UNP A0A0U1MWF9
A	-3	HIS	-	expression tag	UNP A0A0U1MWF9
A	-2	MET	-	expression tag	UNP A0A0U1MWF9
A	68	GLN	GLU	conflict	UNP A0A0U1MWF9
B	-13	MET	-	expression tag	UNP A0A0U1MWF9
B	-12	ASN	-	expression tag	UNP A0A0U1MWF9
B	-11	HIS	-	expression tag	UNP A0A0U1MWF9
B	-10	LYS	-	expression tag	UNP A0A0U1MWF9
B	-9	VAL	-	expression tag	UNP A0A0U1MWF9
B	-8	HIS	-	expression tag	UNP A0A0U1MWF9
B	-7	HIS	-	expression tag	UNP A0A0U1MWF9
B	-6	HIS	-	expression tag	UNP A0A0U1MWF9
B	-5	HIS	-	expression tag	UNP A0A0U1MWF9
B	-4	HIS	-	expression tag	UNP A0A0U1MWF9
B	-3	HIS	-	expression tag	UNP A0A0U1MWF9
B	-2	MET	-	expression tag	UNP A0A0U1MWF9

*Continued on next page...*

Continued from previous page...

Chain	Residue	Modelled	Actual	Comment	Reference
B	68	GLN	GLU	conflict	UNP A0A0U1MWF9

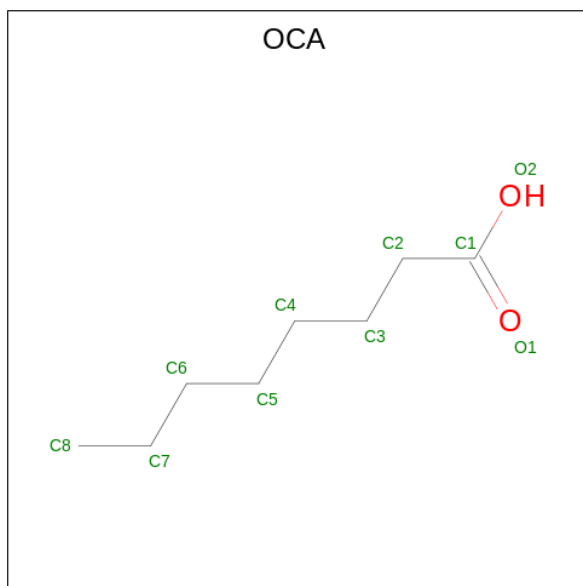
- Molecule 2 is FORMIC ACID (three-letter code: FMT) (formula:  $\text{CH}_2\text{O}_2$ ).



Mol	Chain	Residues	Atoms			ZeroOcc	AltConf
2	A	1	Total	C	O	0	0
			3	1	2		
2	A	1	Total	C	O	0	0
			3	1	2		
2	A	1	Total	C	O	0	0
			3	1	2		
2	A	1	Total	C	O	0	0
			3	1	2		
2	B	1	Total	C	O	0	0
			3	1	2		
2	B	1	Total	C	O	0	0
			3	1	2		
2	B	1	Total	C	O	0	0
			3	1	2		

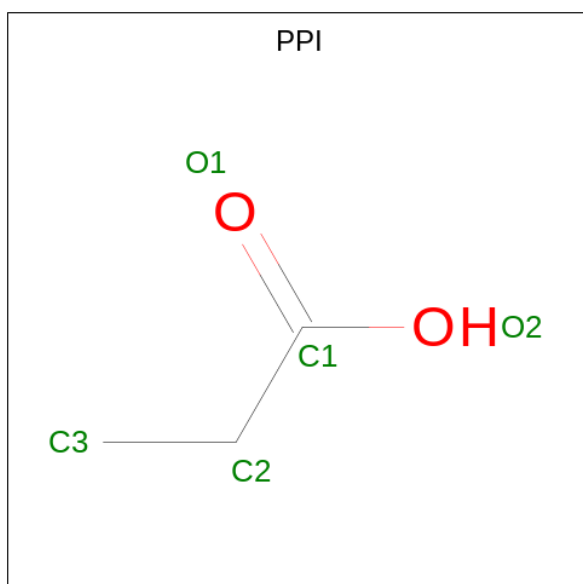
- Molecule 3 is OCTANOIC ACID (CAPRYLIC ACID) (three-letter code: OCA) (formula:

C<sub>8</sub>H<sub>16</sub>O<sub>2</sub>).



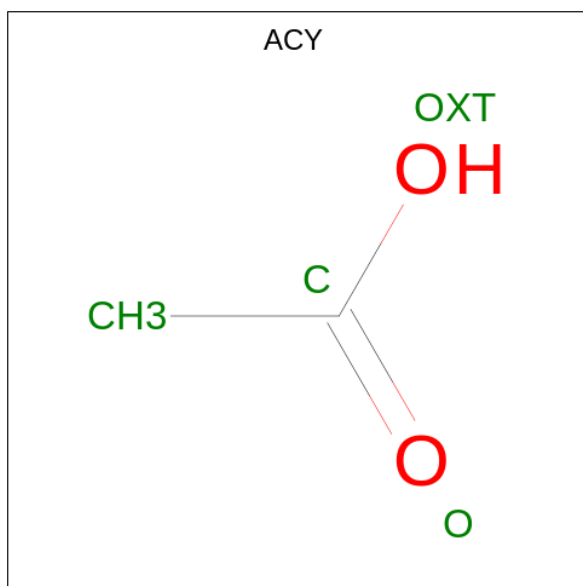
Mol	Chain	Residues	Atoms			ZeroOcc	AltConf
3	A	1	Total	C	O	0	0
			10	8	2		
3	A	1	Total	C	O	0	0
			10	8	2		
3	B	1	Total	C	O	0	0
			10	8	2		
3	B	1	Total	C	O	0	0
			10	8	2		

- Molecule 4 is PROPANOIC ACID (three-letter code: PPI) (formula: C<sub>3</sub>H<sub>6</sub>O<sub>2</sub>).



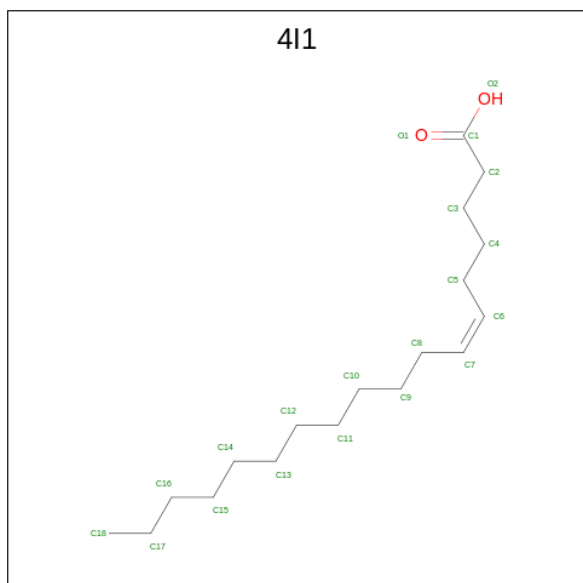
Mol	Chain	Residues	Atoms			ZeroOcc	AltConf
4	A	1	Total	C	O	0	0
			5	3	2		

- Molecule 5 is ACETIC ACID (three-letter code: ACY) (formula: C<sub>2</sub>H<sub>4</sub>O<sub>2</sub>).



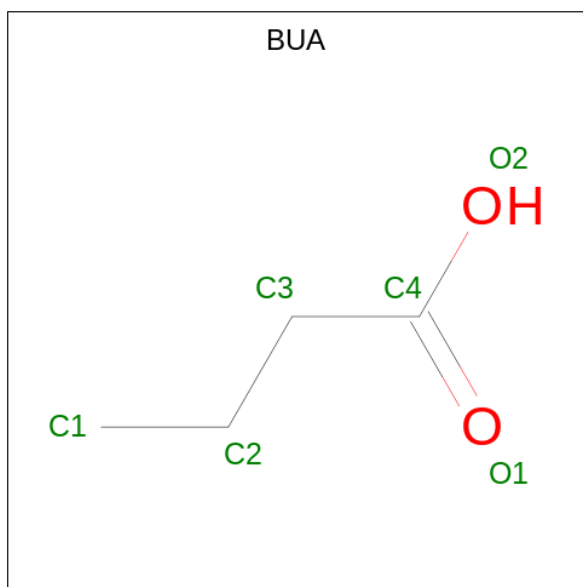
Mol	Chain	Residues	Atoms			ZeroOcc	AltConf
5	A	1	Total	C	O	0	0
			4	2	2		

- Molecule 6 is Petroselinic acid (three-letter code: 4I1) (formula: C<sub>18</sub>H<sub>34</sub>O<sub>2</sub>) (labeled as "Ligand of Interest" by depositor).



Mol	Chain	Residues	Atoms			ZeroOcc	AltConf
6	A	1	Total	C	O	0	0
			20	18	2		
6	B	1	Total	C	O	0	0
			20	18	2		

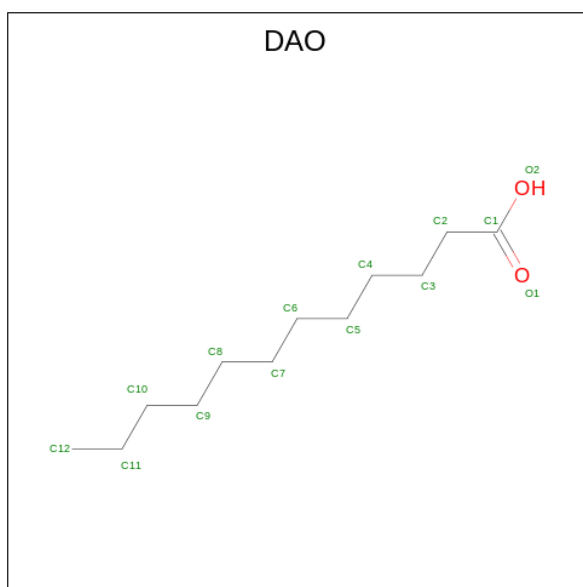
- Molecule 7 is butanoic acid (three-letter code: BUA) (formula:  $C_4H_8O_2$ ).



Mol	Chain	Residues	Atoms			ZeroOcc	AltConf
7	A	1	Total	C	O	0	0
			6	4	2		
7	B	1	Total	C	O	0	0
			6	4	2		

- Molecule 8 is LAURIC ACID (three-letter code: DAO) (formula:  $C_{12}H_{24}O_2$ ).





Mol	Chain	Residues	Atoms		ZeroOcc	AltConf
8	A	1	Total	C O	0	0
			14	12 2		
8	A	1	Total	C O	0	0
			14	12 2		
8	B	1	Total	C O	0	0
			14	12 2		
8	B	1	Total	C O	0	0
			14	12 2		

- Molecule 9 is ZINC ION (three-letter code: ZN) (formula: Zn).

Mol	Chain	Residues	Atoms		ZeroOcc	AltConf
9	A	1	Total	Zn	0	0
			1	1		
9	B	1	Total	Zn	0	0
			1	1		

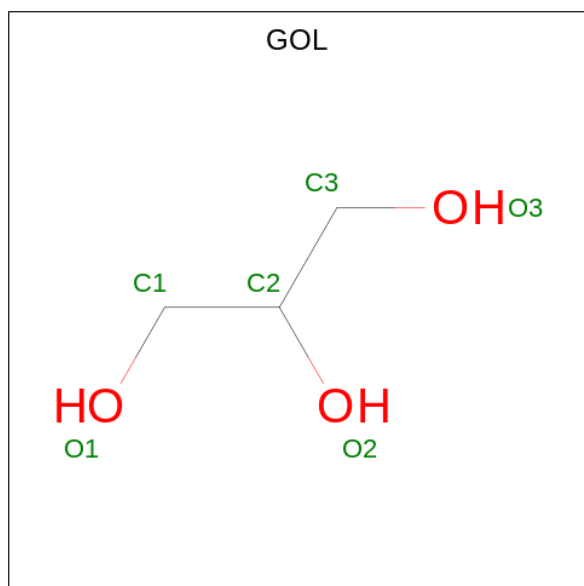
- Molecule 10 is CALCIUM ION (three-letter code: CA) (formula: Ca).

Mol	Chain	Residues	Atoms		ZeroOcc	AltConf
10	A	1	Total	Ca	0	0
			1	1		
10	B	1	Total	Ca	0	0
			1	1		

- Molecule 11 is MAGNESIUM ION (three-letter code: MG) (formula: Mg).

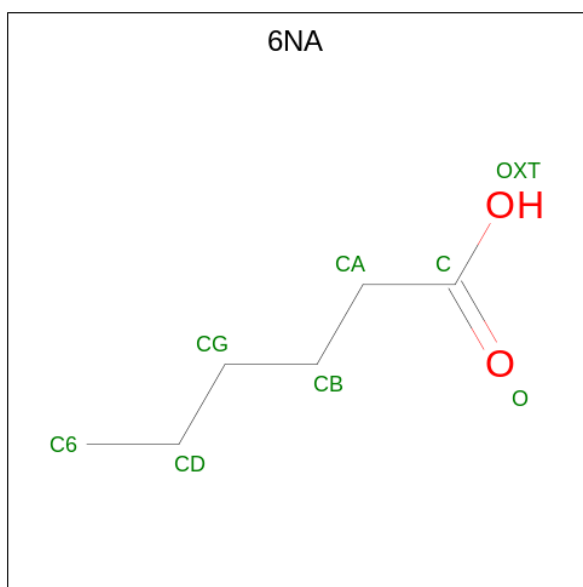
Mol	Chain	Residues	Atoms	ZeroOcc	AltConf
11	A	1	Total Mg 1 1	0	0

- Molecule 12 is GLYCEROL (three-letter code: GOL) (formula:  $C_3H_8O_3$ ).



Mol	Chain	Residues	Atoms	ZeroOcc	AltConf
12	A	1	Total C O 6 3 3	0	0
12	A	1	Total C O 6 3 3	0	0
12	B	1	Total C O 6 3 3	0	0
12	B	1	Total C O 6 3 3	0	0
12	B	1	Total C O 6 3 3	0	0

- Molecule 13 is HEXANOIC ACID (three-letter code: 6NA) (formula:  $C_6H_{12}O_2$ ).



Mol	Chain	Residues	Atoms	ZeroOcc	AltConf
13	A	1	Total C O 8 6 2	0	0
13	B	1	Total C O 8 6 2	0	0
13	B	1	Total C O 8 6 2	0	0

- Molecule 14 is CHLORIDE ION (three-letter code: CL) (formula: Cl).

Mol	Chain	Residues	Atoms	ZeroOcc	AltConf
14	A	2	Total Cl 2 2	0	0
14	B	2	Total Cl 2 2	0	0

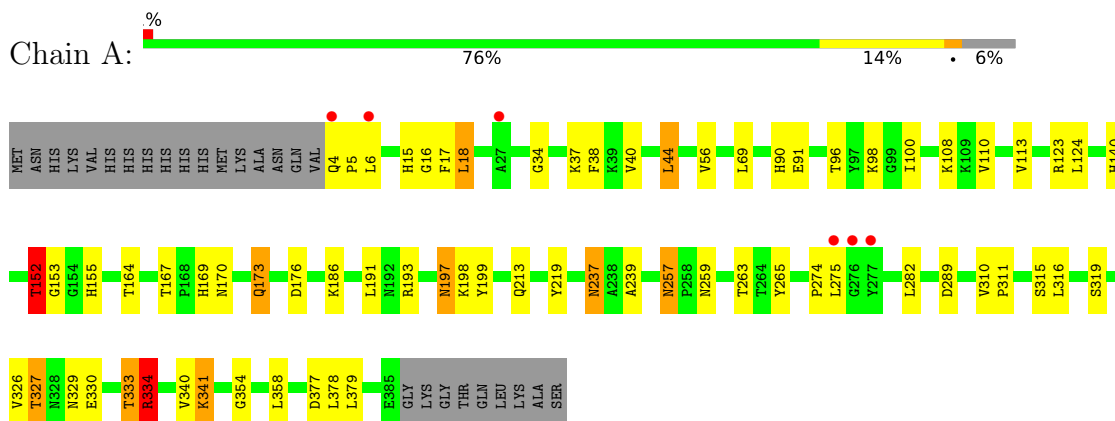
- Molecule 15 is water.

Mol	Chain	Residues	Atoms	ZeroOcc	AltConf
15	A	89	Total O 89 89	0	0
15	B	51	Total O 51 51	0	0

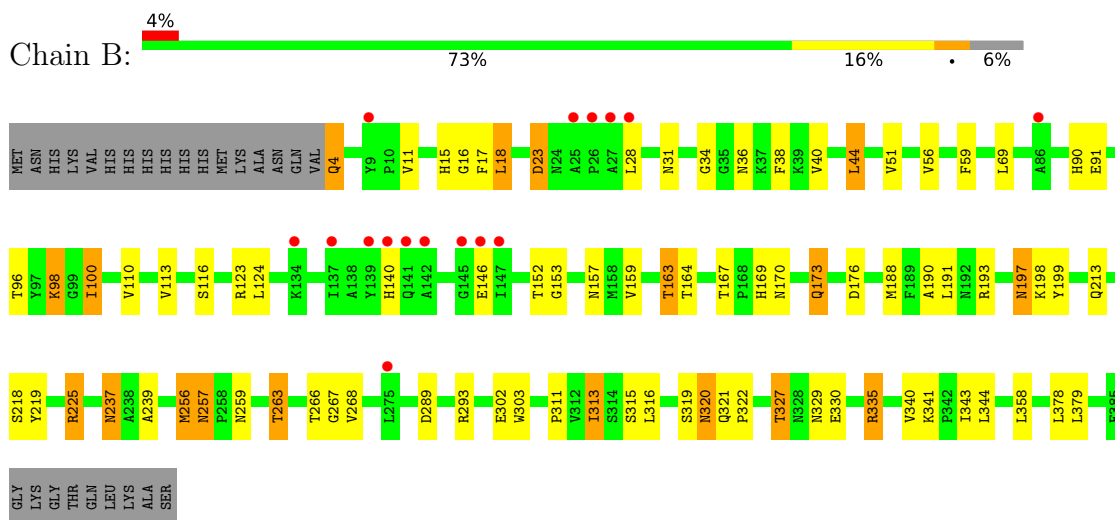
### 3 Residue-property plots [i](#)

These plots are drawn for all protein, RNA, DNA and oligosaccharide chains in the entry. The first graphic for a chain summarises the proportions of the various outlier classes displayed in the second graphic. The second graphic shows the sequence view annotated by issues in geometry and electron density. Residues are color-coded according to the number of geometric quality criteria for which they contain at least one outlier: green = 0, yellow = 1, orange = 2 and red = 3 or more. A red dot above a residue indicates a poor fit to the electron density ( $RSRZ > 2$ ). Stretches of 2 or more consecutive residues without any outlier are shown as a green connector. Residues present in the sample, but not in the model, are shown in grey.

- Molecule 1: Lipase 2



- Molecule 1: Lipase 2



## 4 Data and refinement statistics

Property	Value	Source
Space group	P 41 2 2	Depositor
Cell constants a, b, c, $\alpha$ , $\beta$ , $\gamma$	132.55Å 132.55Å 249.75Å 90.00° 90.00° 90.00°	Depositor
Resolution (Å)	48.29 – 2.27 48.29 – 2.27	Depositor EDS
% Data completeness (in resolution range)	99.9 (48.29-2.27) 99.9 (48.29-2.27)	Depositor EDS
$R_{merge}$	(Not available)	Depositor
$R_{sym}$	(Not available)	Depositor
$\langle I/\sigma(I) \rangle$ <sup>1</sup>	1.52 (at 2.27Å)	Xtrriage
Refinement program	REFMAC 5.8.0419	Depositor
R, $R_{free}$	0.197 , 0.221 0.197 , 0.221	Depositor DCC
$R_{free}$ test set	5125 reflections (5.00%)	wwPDB-VP
Wilson B-factor (Å <sup>2</sup> )	62.4	Xtrriage
Anisotropy	0.025	Xtrriage
Bulk solvent $k_{sol}$ (e/Å <sup>3</sup> ), $B_{sol}$ (Å <sup>2</sup> )	0.33 , 46.3	EDS
L-test for twinning <sup>2</sup>	$\langle  L  \rangle = 0.51$ , $\langle L^2 \rangle = 0.34$	Xtrriage
Estimated twinning fraction	No twinning to report.	Xtrriage
$F_o, F_c$ correlation	0.96	EDS
Total number of atoms	6438	wwPDB-VP
Average B, all atoms (Å <sup>2</sup> )	64.0	wwPDB-VP

Xtrriage's analysis on translational NCS is as follows: *The largest off-origin peak in the Patterson function is 2.44% of the height of the origin peak. No significant pseudotranslation is detected.*

<sup>1</sup>Intensities estimated from amplitudes.

<sup>2</sup>Theoretical values of  $\langle |L| \rangle$ ,  $\langle L^2 \rangle$  for acentric reflections are 0.5, 0.333 respectively for untwinned datasets, and 0.375, 0.2 for perfectly twinned datasets.

## 5 Model quality [i](#)

### 5.1 Standard geometry [i](#)

Bond lengths and bond angles in the following residue types are not validated in this section: MG, DAO, OCA, 6NA, GOL, ACY, 4I1, CA, BUA, ZN, PPI, FMT, CL

The Z score for a bond length (or angle) is the number of standard deviations the observed value is removed from the expected value. A bond length (or angle) with  $|Z| > 5$  is considered an outlier worth inspection. RMSZ is the root-mean-square of all Z scores of the bond lengths (or angles).

Mol	Chain	Bond lengths		Bond angles	
		RMSZ	# Z  >5	RMSZ	# Z  >5
1	A	0.44	0/3106	0.81	2/4212 (0.0%)
1	B	0.42	0/3106	0.83	4/4212 (0.1%)
All	All	0.43	0/6212	0.82	6/8424 (0.1%)

Chiral center outliers are detected by calculating the chiral volume of a chiral center and verifying if the center is modelled as a planar moiety or with the opposite hand. A planarity outlier is detected by checking planarity of atoms in a peptide group, atoms in a mainchain group or atoms of a sidechain that are expected to be planar.

Mol	Chain	#Chirality outliers	#Planarity outliers
1	B	0	2

There are no bond length outliers.

The worst 5 of 6 bond angle outliers are listed below:

Mol	Chain	Res	Type	Atoms	Z	Observed(°)	Ideal(°)
1	B	225	ARG	NE-CZ-NH2	-8.18	116.21	120.30
1	B	225	ARG	CB-CG-CD	-6.86	93.77	111.60
1	B	335	ARG	CB-CG-CD	6.44	128.34	111.60
1	A	152	THR	CA-CB-OG1	-6.03	96.33	109.00
1	B	225	ARG	NE-CZ-NH1	5.79	123.20	120.30

There are no chirality outliers.

All (2) planarity outliers are listed below:

Mol	Chain	Res	Type	Group
1	B	225	ARG	Sidechain
1	B	293	ARG	Sidechain

## 5.2 Too-close contacts

In the following table, the Non-H and H(model) columns list the number of non-hydrogen atoms and hydrogen atoms in the chain respectively. The H(added) column lists the number of hydrogen atoms added and optimized by MolProbity. The Clashes column lists the number of clashes within the asymmetric unit, whereas Symm-Clashes lists symmetry-related clashes.

Mol	Chain	Non-H	H(model)	H(added)	Clashes	Symm-Clashes
1	A	3024	0	2918	55	0
1	B	3024	0	2918	74	0
2	A	15	0	10	3	0
2	B	15	0	10	8	0
3	A	20	0	30	1	0
3	B	20	0	30	0	0
4	A	5	0	5	0	0
5	A	4	0	3	0	0
6	A	20	0	0	0	0
6	B	20	0	0	1	0
7	A	6	0	7	0	0
7	B	6	0	7	0	0
8	A	28	0	46	5	0
8	B	28	0	46	6	0
9	A	1	0	0	0	0
9	B	1	0	0	0	0
10	A	1	0	0	0	0
10	B	1	0	0	0	0
11	A	1	0	0	0	0
12	A	12	0	16	2	0
12	B	18	0	24	1	0
13	A	8	0	11	0	0
13	B	16	0	22	0	0
14	A	2	0	0	1	0
14	B	2	0	0	0	0
15	A	89	0	0	4	1
15	B	51	0	0	1	0
All	All	6438	0	6103	132	1

The all-atom clashscore is defined as the number of clashes found per 1000 atoms (including hydrogen atoms). The all-atom clashscore for this structure is 11.

The worst 5 of 132 close contacts within the same asymmetric unit are listed below, sorted by their clash magnitude.

Atom-1	Atom-2	Interatomic distance (Å)	Clash overlap (Å)
14:A:421:CL:CL	15:A:580:HOH:O	1.90	1.21
1:B:256:MET:HE3	1:B:321:GLN:HB3	1.25	1.11
1:B:313:ILE:H	1:B:313:ILE:HD13	0.96	1.11
1:A:327:THR:HG23	1:A:329:ASN:H	1.21	1.06
1:B:256:MET:CE	1:B:321:GLN:HB3	1.87	1.04

All (1) symmetry-related close contacts are listed below. The label for Atom-2 includes the symmetry operator and encoded unit-cell translations to be applied.

Atom-1	Atom-2	Interatomic distance (Å)	Clash overlap (Å)
15:A:575:HOH:O	15:A:575:HOH:O[5_555]	2.19	0.01

### 5.3 Torsion angles [i](#)

#### 5.3.1 Protein backbone [i](#)

In the following table, the Percentiles column shows the percent Ramachandran outliers of the chain as a percentile score with respect to all X-ray entries followed by that with respect to entries of similar resolution.

The Analysed column shows the number of residues for which the backbone conformation was analysed, and the total number of residues.

Mol	Chain	Analysed	Favoured	Allowed	Outliers	Percentiles	
1	A	380/408 (93%)	370 (97%)	10 (3%)	0	100	100
1	B	380/408 (93%)	371 (98%)	9 (2%)	0	100	100
All	All	760/816 (93%)	741 (98%)	19 (2%)	0	100	100

There are no Ramachandran outliers to report.

#### 5.3.2 Protein sidechains [i](#)

In the following table, the Percentiles column shows the percent sidechain outliers of the chain as a percentile score with respect to all X-ray entries followed by that with respect to entries of similar resolution.

The Analysed column shows the number of residues for which the sidechain conformation was analysed, and the total number of residues.



Mol	Chain	Analysed	Rotameric	Outliers	Percentiles	
1	A	319/341 (94%)	287 (90%)	32 (10%)	7	8
1	B	319/341 (94%)	281 (88%)	38 (12%)	5	5
All	All	638/682 (94%)	568 (89%)	70 (11%)	6	6

5 of 70 residues with a non-rotameric sidechain are listed below:

Mol	Chain	Res	Type
1	B	263	THR
1	B	313	ILE
1	B	341	LYS
1	A	327	THR
1	A	326	VAL

Sometimes sidechains can be flipped to improve hydrogen bonding and reduce clashes. 5 of 26 such sidechains are listed below:

Mol	Chain	Res	Type
1	B	84	HIS
1	B	170	ASN
1	B	320	ASN
1	B	169	HIS
1	B	173	GLN

### 5.3.3 RNA [i](#)

There are no RNA molecules in this entry.

### 5.4 Non-standard residues in protein, DNA, RNA chains [i](#)

There are no non-standard protein/DNA/RNA residues in this entry.

### 5.5 Carbohydrates [i](#)

There are no monosaccharides in this entry.

### 5.6 Ligand geometry [i](#)

Of 41 ligands modelled in this entry, 9 are monoatomic - leaving 32 for Mogul analysis.

In the following table, the Counts columns list the number of bonds (or angles) for which Mogul statistics could be retrieved, the number of bonds (or angles) that are observed in the model and the number of bonds (or angles) that are defined in the Chemical Component Dictionary. The Link column lists molecule types, if any, to which the group is linked. The Z score for a bond length (or angle) is the number of standard deviations the observed value is removed from the expected value. A bond length (or angle) with  $|Z| > 2$  is considered an outlier worth inspection. RMSZ is the root-mean-square of all Z scores of the bond lengths (or angles).

Mol	Type	Chain	Res	Link	Bond lengths			Bond angles		
					Counts	RMSZ	# Z  > 2	Counts	RMSZ	# Z  > 2
8	DAO	A	419	-	13,13,13	0.74	0	13,13,13	0.68	0
2	FMT	A	401	-	2,2,2	1.39	0	1,1,1	0.18	0
2	FMT	A	417	-	2,2,2	1.19	0	1,1,1	0.18	0
3	OCA	B	405	-	9,9,9	0.83	0	9,9,9	1.07	0
2	FMT	B	416	-	2,2,2	1.17	0	1,1,1	0.16	0
13	6NA	B	401	-	7,7,7	0.77	0	7,7,7	1.18	1 (14%)
3	OCA	A	402	-	9,9,9	0.84	0	9,9,9	1.17	1 (11%)
12	GOL	A	412	-	5,5,5	0.25	0	5,5,5	0.31	0
3	OCA	B	406	-	9,9,9	1.08	1 (11%)	9,9,9	1.02	0
2	FMT	B	415	-	2,2,2	1.20	0	1,1,1	0.19	0
13	6NA	B	403	-	7,7,7	1.00	0	7,7,7	0.77	0
7	BUA	B	404	-	5,5,5	1.05	0	5,5,5	1.03	0
8	DAO	A	408	-	13,13,13	0.56	0	13,13,13	0.73	0
12	GOL	A	413	-	5,5,5	0.19	0	5,5,5	0.51	0
2	FMT	B	402	-	2,2,2	2.15	1 (50%)	1,1,1	0.28	0
2	FMT	A	416	-	2,2,2	1.74	1 (50%)	1,1,1	0.15	0
7	BUA	A	407	-	5,5,5	1.03	0	5,5,5	1.02	0
3	OCA	A	406	-	9,9,9	0.78	0	9,9,9	0.74	0
2	FMT	B	417	-	2,2,2	2.25	1 (50%)	1,1,1	0.28	0
4	PPI	A	403	-	4,4,4	0.91	0	4,4,4	0.83	0
5	ACY	A	404	-	3,3,3	1.27	0	3,3,3	0.74	0
2	FMT	B	414	-	2,2,2	2.00	1 (50%)	1,1,1	0.26	0
12	GOL	B	412	-	5,5,5	0.14	0	5,5,5	0.41	0
6	4I1	A	405	1	19,19,19	0.92	0	19,19,19	1.55	3 (15%)
2	FMT	A	418	-	2,2,2	1.31	0	1,1,1	0.22	0
6	4I1	B	407	1	19,19,19	0.88	0	19,19,19	1.61	2 (10%)
12	GOL	B	411	-	5,5,5	0.20	0	5,5,5	0.53	0
8	DAO	B	418	-	13,13,13	0.70	0	13,13,13	0.79	0
8	DAO	B	408	-	13,13,13	0.61	0	13,13,13	0.82	0
12	GOL	B	413	-	5,5,5	0.18	0	5,5,5	0.51	0
2	FMT	A	415	-	2,2,2	2.00	1 (50%)	1,1,1	0.13	0
13	6NA	A	414	-	7,7,7	0.61	0	7,7,7	1.04	0

In the following table, the Chirals column lists the number of chiral outliers, the number of chiral centers analysed, the number of these observed in the model and the number defined in the Chemical Component Dictionary. Similar counts are reported in the Torsion and Rings columns. '-' means no outliers of that kind were identified.

Mol	Type	Chain	Res	Link	Chirals	Torsions	Rings
8	DAO	A	419	-	-	6/11/11/11	-
3	OCA	B	405	-	-	5/7/7/7	-
13	6NA	B	401	-	-	1/5/5/5	-
12	GOL	A	412	-	-	2/4/4/4	-
3	OCA	A	402	-	-	5/7/7/7	-
3	OCA	B	406	-	-	2/7/7/7	-
13	6NA	B	403	-	-	2/5/5/5	-
7	BUA	B	404	-	-	2/3/3/3	-
8	DAO	A	408	-	-	4/11/11/11	-
12	GOL	A	413	-	-	0/4/4/4	-
7	BUA	A	407	-	-	1/3/3/3	-
3	OCA	A	406	-	-	5/7/7/7	-
4	PPI	A	403	-	-	0/2/2/2	-
12	GOL	B	412	-	-	3/4/4/4	-
6	4I1	A	405	1	-	8/17/17/17	-
6	4I1	B	407	1	-	9/17/17/17	-
12	GOL	B	411	-	-	4/4/4/4	-
8	DAO	B	418	-	-	6/11/11/11	-
8	DAO	B	408	-	-	9/11/11/11	-
12	GOL	B	413	-	-	0/4/4/4	-
13	6NA	A	414	-	-	2/5/5/5	-

The worst 5 of 6 bond length outliers are listed below:

Mol	Chain	Res	Type	Atoms	Z	Observed(Å)	Ideal(Å)
2	B	417	FMT	O2-C	3.17	1.44	1.28
2	B	402	FMT	O2-C	3.02	1.43	1.28
2	A	415	FMT	O2-C	2.82	1.42	1.28
2	B	414	FMT	O2-C	2.81	1.42	1.28
2	A	416	FMT	O2-C	2.45	1.41	1.28

The worst 5 of 7 bond angle outliers are listed below:

Mol	Chain	Res	Type	Atoms	Z	Observed(°)	Ideal(°)
6	B	407	4I1	C3-C2-C1	4.69	126.31	114.47

*Continued on next page...*

Continued from previous page...

Mol	Chain	Res	Type	Atoms	Z	Observed(°)	Ideal(°)
6	A	405	4I1	C3-C2-C1	4.24	125.17	114.47
6	B	407	4I1	C12-C11-C10	3.39	131.66	114.42
6	A	405	4I1	C12-C11-C10	2.96	129.46	114.42
6	A	405	4I1	C15-C14-C13	2.30	126.11	114.42

There are no chirality outliers.

5 of 76 torsion outliers are listed below:

Mol	Chain	Res	Type	Atoms
12	B	411	GOL	O1-C1-C2-C3
12	B	412	GOL	O1-C1-C2-C3
8	A	419	DAO	C3-C4-C5-C6
8	B	418	DAO	C3-C4-C5-C6
6	B	407	4I1	C9-C10-C11-C12

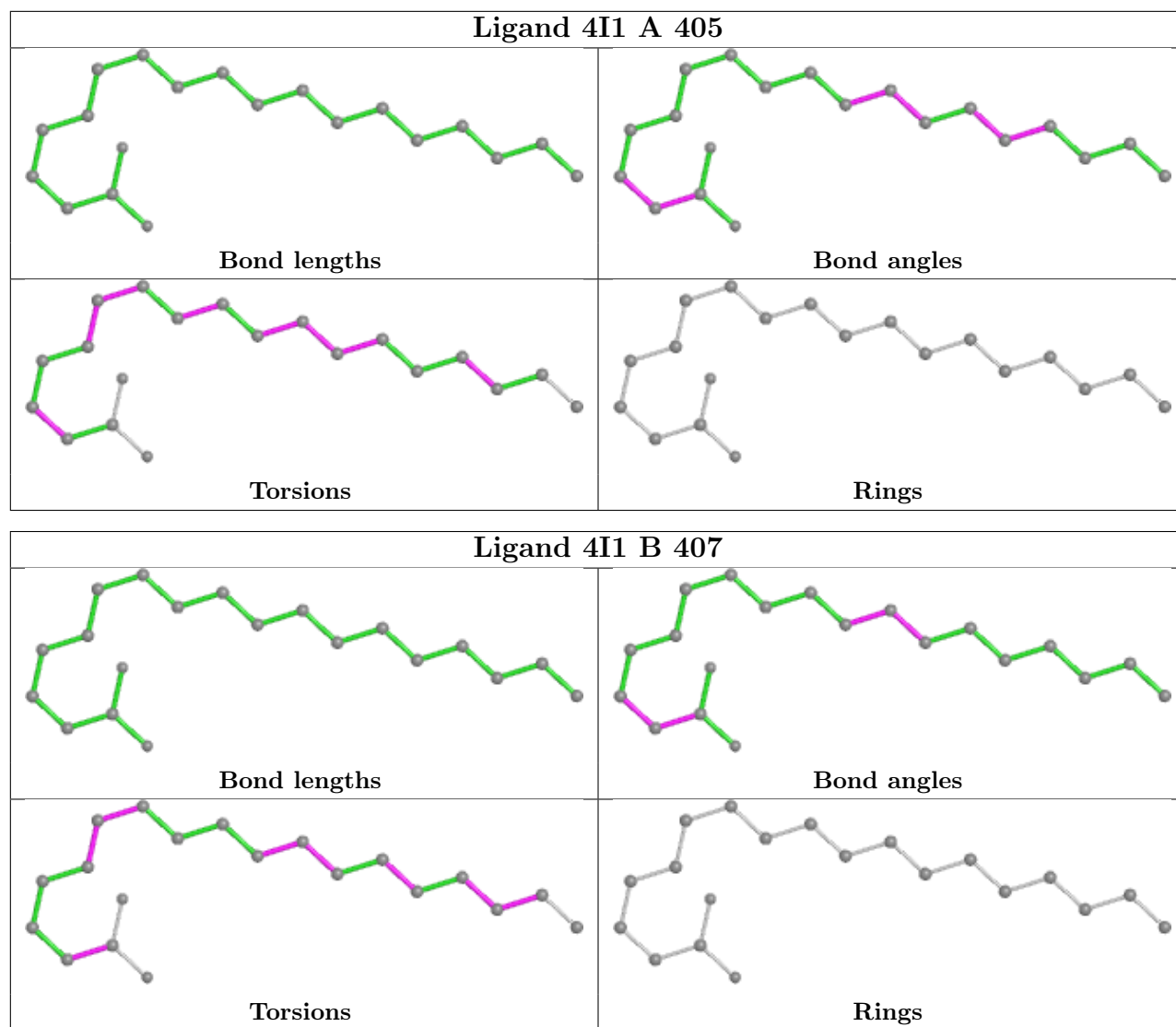
There are no ring outliers.

11 monomers are involved in 26 short contacts:

Mol	Chain	Res	Type	Clashes	Symm-Clashes
8	A	419	DAO	3	0
3	A	402	OCA	1	0
12	A	412	GOL	2	0
8	A	408	DAO	2	0
2	B	402	FMT	7	0
2	A	416	FMT	3	0
2	B	414	FMT	1	0
12	B	412	GOL	1	0
6	B	407	4I1	1	0
8	B	418	DAO	3	0
8	B	408	DAO	3	0

The following is a two-dimensional graphical depiction of Mogul quality analysis of bond lengths, bond angles, torsion angles, and ring geometry for all instances of the Ligand of Interest. In addition, ligands with molecular weight > 250 and outliers as shown on the validation Tables will also be included. For torsion angles, if less than 5% of the Mogul distribution of torsion angles is within 10 degrees of the torsion angle in question, then that torsion angle is considered an outlier. Any bond that is central to one or more torsion angles identified as an outlier by Mogul will be highlighted in the graph. For rings, the root-mean-square deviation (RMSD) between the ring in question and similar rings identified by Mogul is calculated over all ring torsion angles. If the average RMSD is greater than 60 degrees and the minimal RMSD between the ring in question and any Mogul-identified rings is also greater than 60 degrees, then that ring is considered an outlier. The outliers are highlighted in purple. The color gray indicates Mogul did not find sufficient

equivalents in the CSD to analyse the geometry.



## 5.7 Other polymers [i](#)

There are no such residues in this entry.

## 5.8 Polymer linkage issues [i](#)

There are no chain breaks in this entry.

## 6 Fit of model and data [i](#)

### 6.1 Protein, DNA and RNA chains [i](#)

In the following table, the column labelled ‘#RSRZ > 2’ contains the number (and percentage) of RSRZ outliers, followed by percent RSRZ outliers for the chain as percentile scores relative to all X-ray entries and entries of similar resolution. The OWAB column contains the minimum, median, 95<sup>th</sup> percentile and maximum values of the occupancy-weighted average B-factor per residue. The column labelled ‘Q < 0.9’ lists the number of (and percentage) of residues with an average occupancy less than 0.9.

Mol	Chain	Analysed	<RSRZ>	#RSRZ>2	OWAB(Å <sup>2</sup> )	Q<0.9
1	A	382/408 (93%)	-0.10	6 (1%) 72 77	45, 57, 83, 133	0
1	B	382/408 (93%)	-0.05	16 (4%) 36 41	48, 64, 92, 120	0
All	All	764/816 (93%)	-0.07	22 (2%) 51 57	45, 60, 89, 133	0

The worst 5 of 22 RSRZ outliers are listed below:

Mol	Chain	Res	Type	RSRZ
1	A	275	LEU	4.1
1	B	142	ALA	3.9
1	B	140	HIS	3.8
1	B	141	GLN	3.6
1	B	137	ILE	3.5

### 6.2 Non-standard residues in protein, DNA, RNA chains [i](#)

There are no non-standard protein/DNA/RNA residues in this entry.

### 6.3 Carbohydrates [i](#)

There are no monosaccharides in this entry.

### 6.4 Ligands [i](#)

In the following table, the Atoms column lists the number of modelled atoms in the group and the number defined in the chemical component dictionary. The B-factors column lists the minimum, median, 95<sup>th</sup> percentile and maximum values of B factors of atoms in the group. The column labelled ‘Q < 0.9’ lists the number of atoms with occupancy less than 0.9.

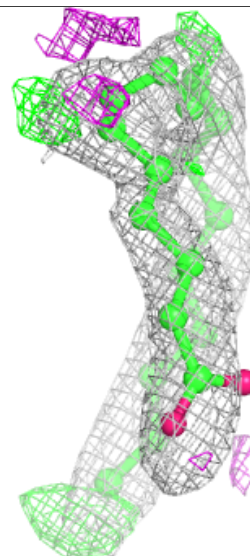
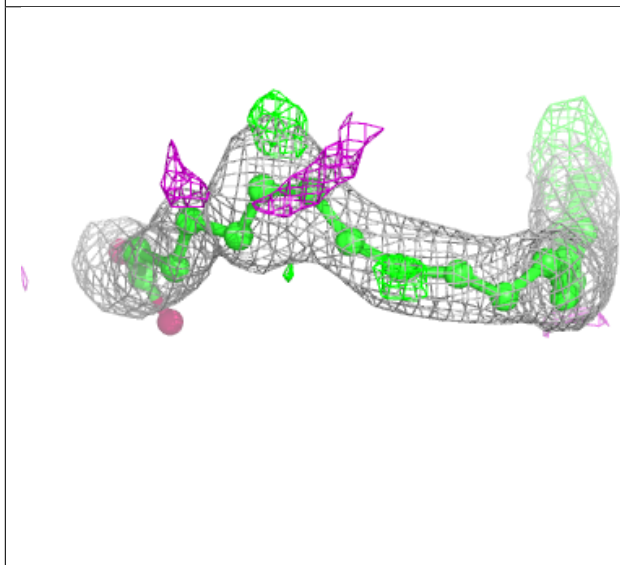
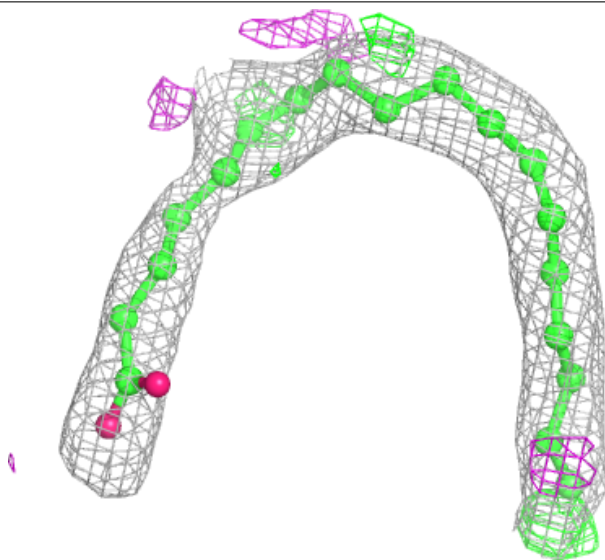
Mol	Type	Chain	Res	Atoms	RSCC	RSR	B-factors( $\text{\AA}^2$ )	Q<0.9
2	FMT	B	415	3/3	0.30	0.74	98,98,136,137	0
2	FMT	B	414	3/3	0.36	0.50	64,64,79,113	0
12	GOL	B	411	6/6	0.65	0.24	85,92,112,115	0
12	GOL	B	412	6/6	0.67	0.45	93,116,122,128	0
7	BUA	A	407	6/6	0.68	0.36	87,109,124,128	0
2	FMT	A	401	3/3	0.71	0.34	72,72,97,107	0
2	FMT	A	415	3/3	0.72	0.39	74,74,76,122	0
2	FMT	B	417	3/3	0.73	0.25	58,58,62,100	0
4	PPI	A	403	5/5	0.78	0.24	79,86,102,108	0
3	OCA	A	402	10/10	0.79	0.33	64,80,109,124	0
2	FMT	A	416	3/3	0.79	0.23	61,61,66,90	0
5	ACY	A	404	4/4	0.79	0.25	87,97,98,106	0
3	OCA	A	406	10/10	0.81	0.20	88,114,134,136	0
2	FMT	B	402	3/3	0.81	0.49	58,58,67,102	0
8	DAO	A	408	14/14	0.82	0.35	80,91,111,113	0
7	BUA	B	404	6/6	0.83	0.33	77,101,111,116	0
3	OCA	B	405	10/10	0.85	0.43	68,82,108,121	0
8	DAO	A	419	14/14	0.85	0.33	56,74,82,86	0
12	GOL	A	413	6/6	0.86	0.23	84,89,93,103	0
12	GOL	B	413	6/6	0.86	0.23	75,89,100,108	0
3	OCA	B	406	10/10	0.87	0.43	68,77,87,94	0
8	DAO	B	408	14/14	0.87	0.36	68,89,118,119	0
2	FMT	A	418	3/3	0.87	0.39	76,76,89,98	0
13	6NA	B	401	8/8	0.87	0.22	71,83,97,100	0
11	MG	A	411	1/1	0.88	0.66	101,101,101,101	0
8	DAO	B	418	14/14	0.88	0.32	50,69,87,93	0
13	6NA	B	403	8/8	0.88	0.60	85,100,109,109	0
6	4I1	A	405	20/20	0.89	0.22	57,69,97,123	0
2	FMT	B	416	3/3	0.89	0.34	79,79,84,92	0
6	4I1	B	407	20/20	0.90	0.22	48,70,94,119	0
12	GOL	A	412	6/6	0.90	0.22	69,101,109,112	0
13	6NA	A	414	8/8	0.91	0.25	66,86,91,92	0
2	FMT	A	417	3/3	0.92	0.38	72,72,79,96	0
14	CL	B	420	1/1	0.95	0.12	95,95,95,95	0
14	CL	B	419	1/1	0.96	0.41	81,81,81,81	0
14	CL	A	421	1/1	0.98	0.26	81,81,81,81	0
14	CL	A	420	1/1	0.99	0.29	75,75,75,75	0
10	CA	A	410	1/1	0.99	0.09	62,62,62,62	0
9	ZN	A	409	1/1	1.00	0.12	52,52,52,52	0
10	CA	B	410	1/1	1.00	0.10	57,57,57,57	0
9	ZN	B	409	1/1	1.00	0.10	63,63,63,63	0

The following is a graphical depiction of the model fit to experimental electron density of all instances of the Ligand of Interest. In addition, ligands with molecular weight > 250 and outliers

as shown on the geometry validation Tables will also be included. Each fit is shown from different orientation to approximate a three-dimensional view.

**Electron density around 4I1 A 405:**

$2mF_o-DF_c$  (at 0.7 rmsd) in gray  
 $mF_o-DF_c$  (at 3 rmsd) in purple (negative)  
and green (positive)







## 6.5 Other polymers [i](#)

There are no such residues in this entry.