



wwPDB EM Validation Summary Report ⓘ

Aug 5, 2024 – 04:17 pm BST

PDB ID : 9FAA
EMDB ID : EMD-50270
Title : Cryo-EM structure of cardiac collagen-associated amyloid AL59
Authors : Schulte, T.; Speranzini, V.; Chaves-Sanjuan, A.; Milazzo, M.; Ricagno, S.
Deposited on : 2024-05-10
Resolution : 3.60 Å (reported)

This is a wwPDB EM Validation Summary Report for a publicly released PDB entry.

We welcome your comments at validation@mail.wwpdb.org

A user guide is available at

<https://www.wwpdb.org/validation/2017/EMValidationReportHelp>

with specific help available everywhere you see the ⓘ symbol.

The types of validation reports are described at

<http://www.wwpdb.org/validation/2017/FAQs#types>.

The following versions of software and data (see [references ⓘ](#)) were used in the production of this report:

EMDB validation analysis : 0.0.1.dev92
MolProbity : **FAILED**
Percentile statistics : 20191225.v01 (using entries in the PDB archive December 25th 2019)
MapQ : 1.9.13
Ideal geometry (proteins) : Engh & Huber (2001)
Ideal geometry (DNA, RNA) : Parkinson et al. (1996)
Validation Pipeline (wwPDB-VP) : 2.37.1

1 Overall quality at a glance

The following experimental techniques were used to determine the structure:

ELECTRON MICROSCOPY

The reported resolution of this entry is 3.60 Å.

There are no overall percentile quality scores available for this entry.

ENTRY-COMPOSITION INFOmissingINFO

SEQUENCE-PLOTS INFOmissingINFO

2 Experimental information

Property	Value	Source
EM reconstruction method	HELICAL	Depositor
Imposed symmetry	HELICAL, twist=-0.7425°, rise=4.9158 Å, axial sym=C1	Depositor
Number of segments used	37904	Depositor
Resolution determination method	FSC 0.143 CUT-OFF	Depositor
CTF correction method	PHASE FLIPPING AND AMPLITUDE CORRECTION	Depositor
Microscope	FEI TALOS ARCTICA	Depositor
Voltage (kV)	200	Depositor
Electron dose ($e^-/\text{Å}^2$)	40	Depositor
Minimum defocus (nm)	500	Depositor
Maximum defocus (nm)	2000	Depositor
Magnification	120000	Depositor
Image detector	FEI FALCON III (4k x 4k)	Depositor
Maximum map value	0.090	Depositor
Minimum map value	-0.050	Depositor
Average map value	0.000	Depositor
Map value standard deviation	0.003	Depositor
Recommended contour level	0.02	Depositor
Map size (Å)	302.26, 302.26, 302.26	wwPDB
Map dimensions	340, 340, 340	wwPDB
Map angles (°)	90.0, 90.0, 90.0	wwPDB
Pixel spacing (Å)	0.88900006, 0.88900006, 0.88900006	Depositor

3 Model quality [i](#)

3.1 Standard geometry [i](#)

MolProbity failed to run properly - this section is therefore empty.

3.2 Too-close contacts [i](#)

MolProbity failed to run properly - this section is therefore empty.

3.3 Torsion angles [i](#)

3.3.1 Protein backbone [i](#)

MolProbity failed to run properly - this section is therefore empty.

3.3.2 Protein sidechains [i](#)

MolProbity failed to run properly - this section is therefore empty.

3.3.3 RNA [i](#)

MolProbity failed to run properly - this section is therefore empty.

3.4 Non-standard residues in protein, DNA, RNA chains [i](#)

validation-pack failed to run properly - this section is therefore empty.

3.5 Carbohydrates [i](#)

validation-pack failed to run properly - this section is therefore empty.

3.6 Ligand geometry [i](#)

validation-pack failed to run properly - this section is therefore empty.

3.7 Other polymers [i](#)

validation-pack failed to run properly - this section is therefore empty.

3.8 Polymer linkage issues

There are no chain breaks in this entry.

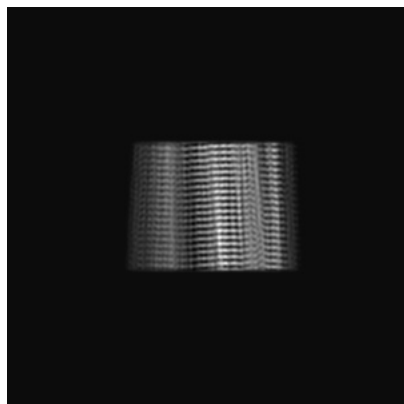
4 Map visualisation [i](#)

This section contains visualisations of the EMDB entry EMD-50270. These allow visual inspection of the internal detail of the map and identification of artifacts.

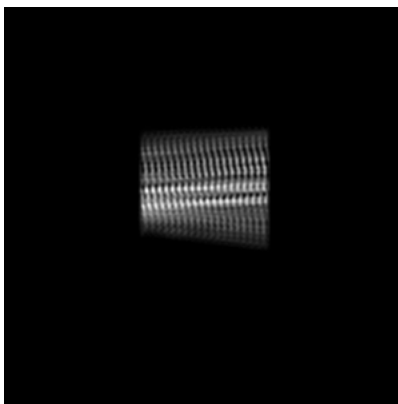
Images derived from a raw map, generated by summing the deposited half-maps, are presented below the corresponding image components of the primary map to allow further visual inspection and comparison with those of the primary map.

4.1 Orthogonal projections [i](#)

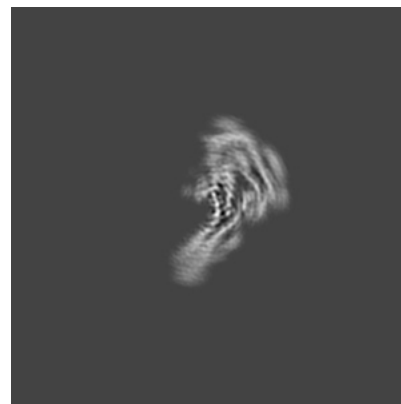
4.1.1 Primary map



X

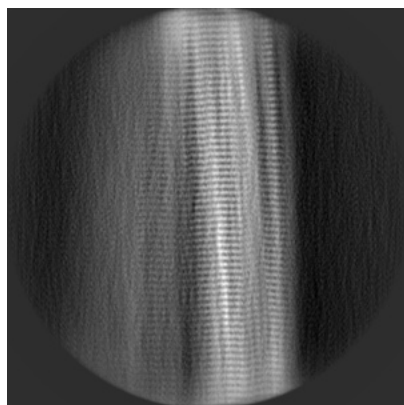


Y

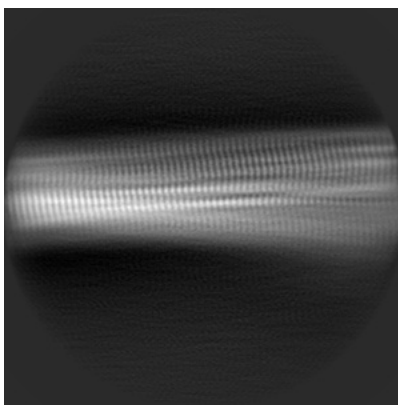


Z

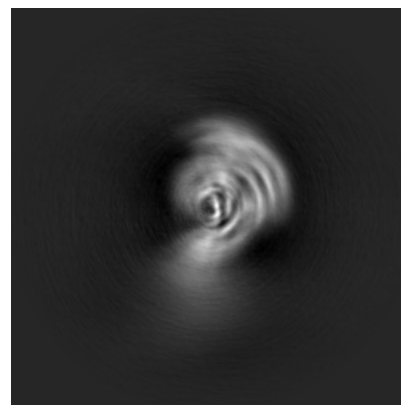
4.1.2 Raw map



X



Y

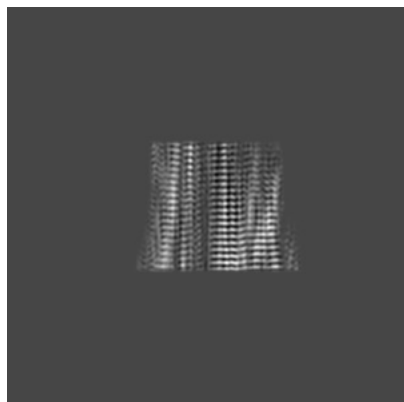


Z

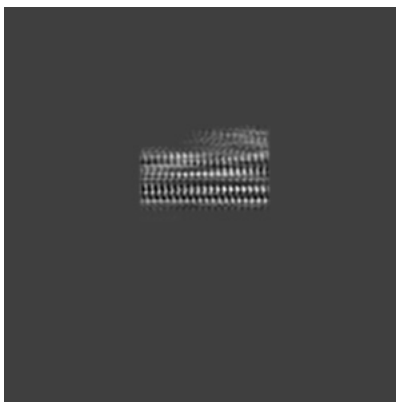
The images above show the map projected in three orthogonal directions.

4.2 Central slices [i](#)

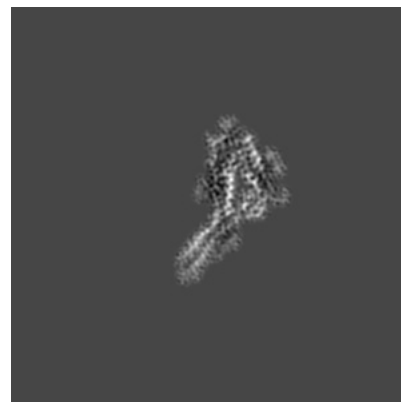
4.2.1 Primary map



X Index: 170

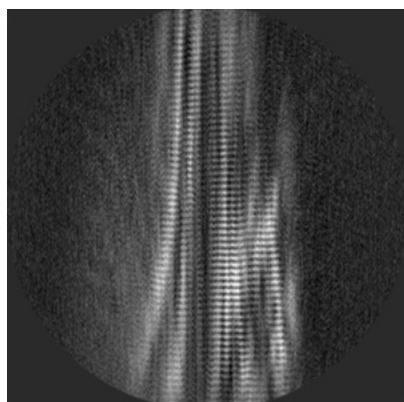


Y Index: 170

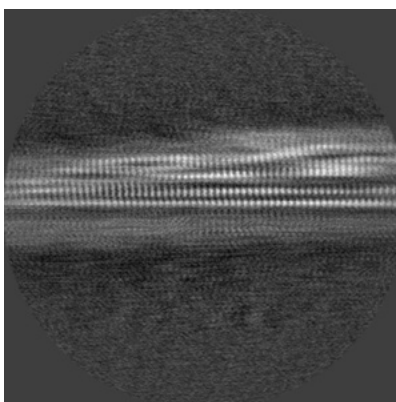


Z Index: 170

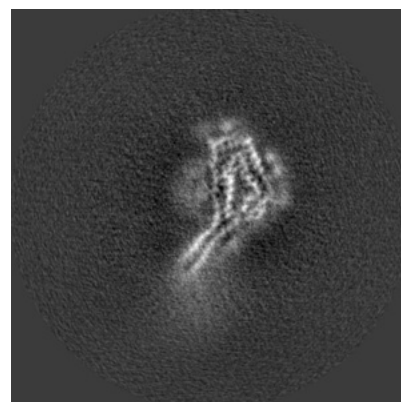
4.2.2 Raw map



X Index: 170



Y Index: 170

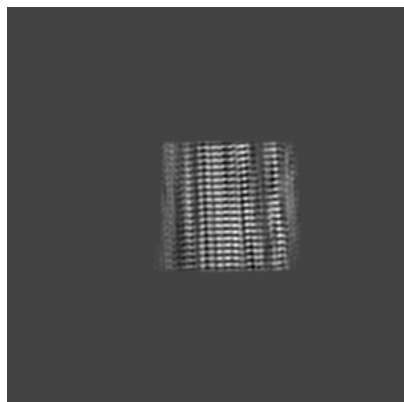


Z Index: 170

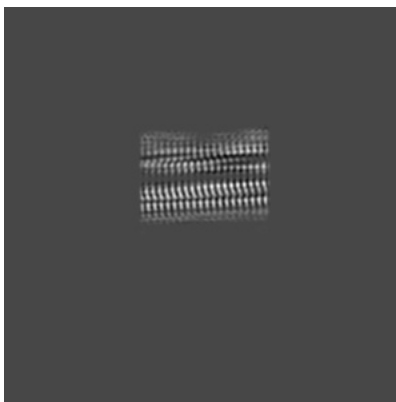
The images above show central slices of the map in three orthogonal directions.

4.3 Largest variance slices [i](#)

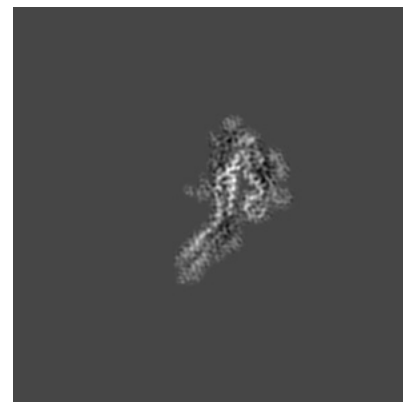
4.3.1 Primary map



X Index: 185

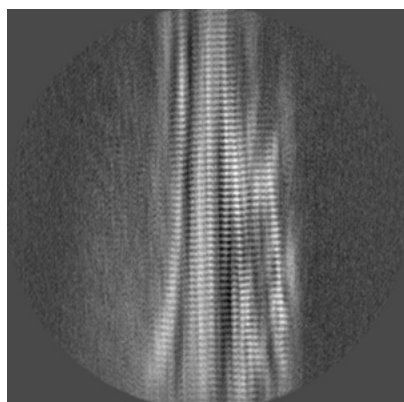


Y Index: 192

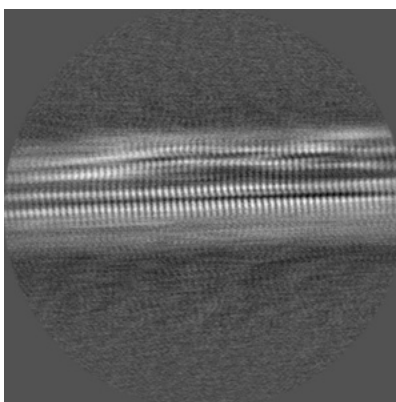


Z Index: 182

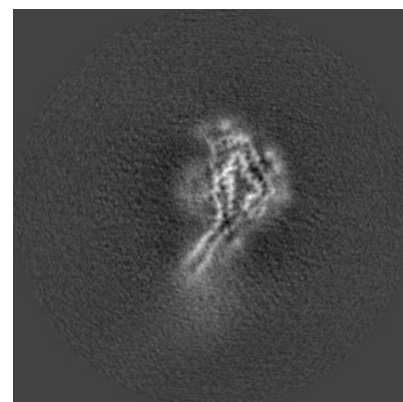
4.3.2 Raw map



X Index: 175



Y Index: 185

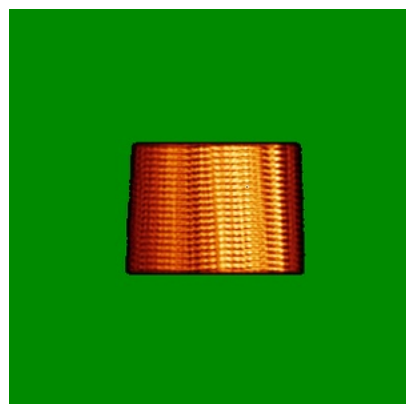


Z Index: 149

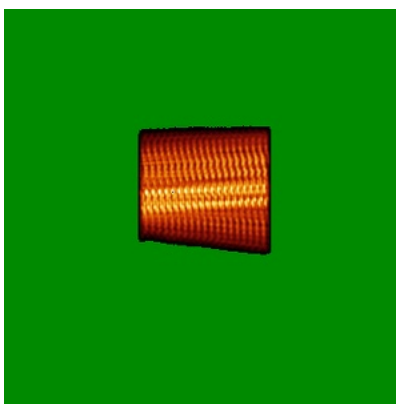
The images above show the largest variance slices of the map in three orthogonal directions.

4.4 Orthogonal standard-deviation projections (False-color) [i](#)

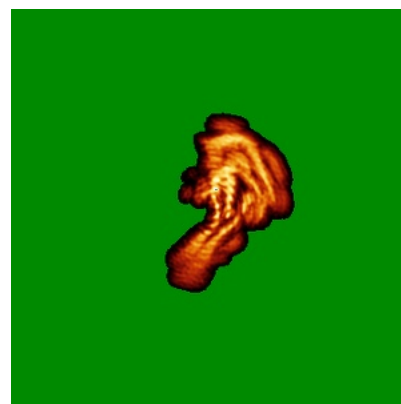
4.4.1 Primary map



X

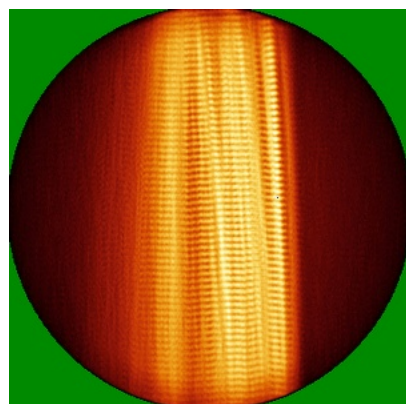


Y

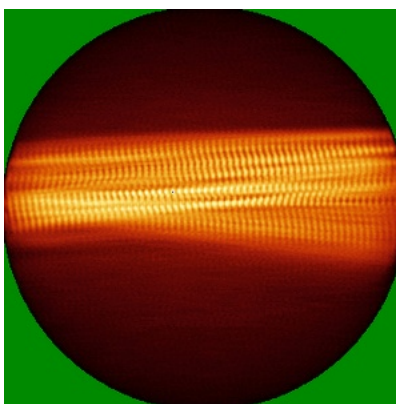


Z

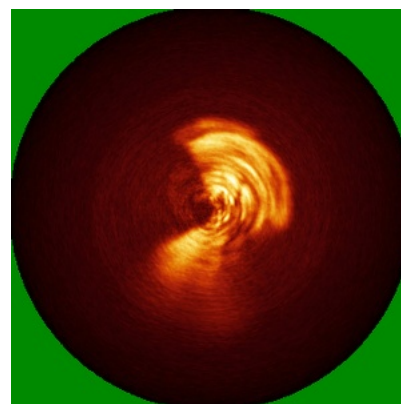
4.4.2 Raw map



X



Y

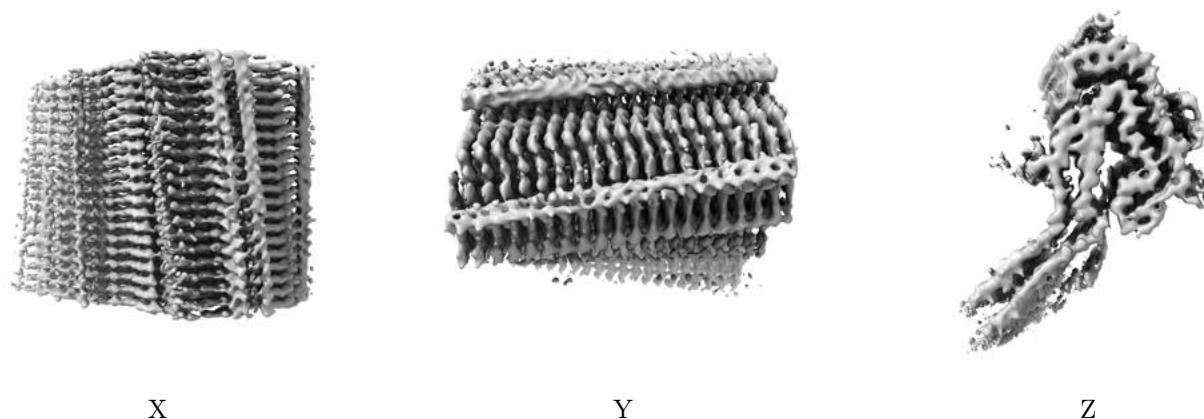


Z

The images above show the map standard deviation projections with false color in three orthogonal directions. Minimum values are shown in green, max in blue, and dark to light orange shades represent small to large values respectively.

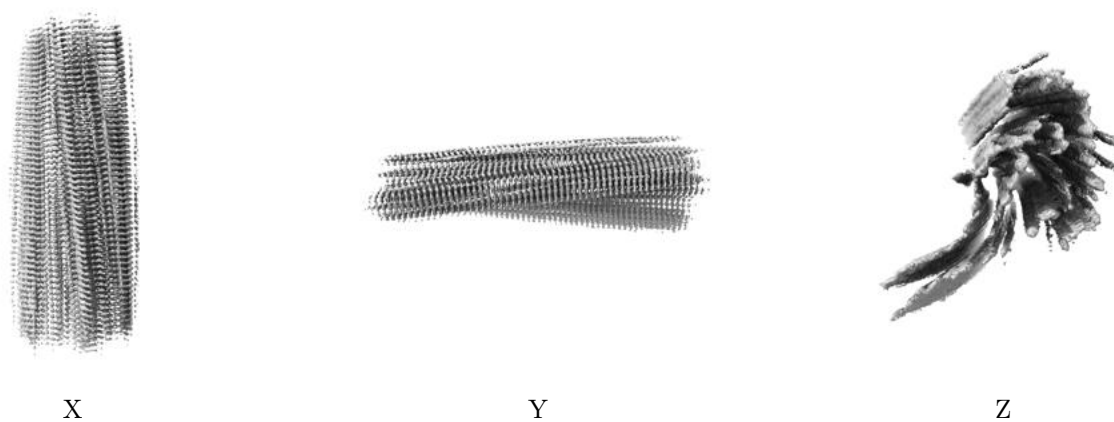
4.5 Orthogonal surface views [i](#)

4.5.1 Primary map



The images above show the 3D surface view of the map at the recommended contour level 0.02. These images, in conjunction with the slice images, may facilitate assessment of whether an appropriate contour level has been provided.

4.5.2 Raw map



These images show the 3D surface of the raw map. The raw map's contour level was selected so that its surface encloses the same volume as the primary map does at its recommended contour level.

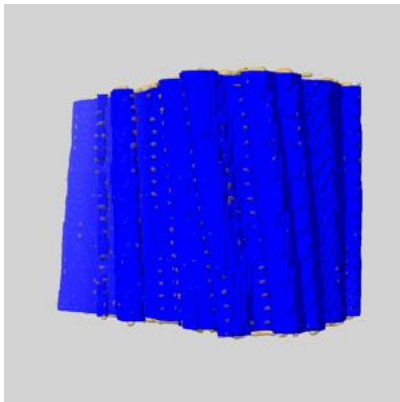
4.6 Mask visualisation [i](#)

This section shows the 3D surface view of the primary map at 50% transparency overlaid with the specified mask at 0% transparency

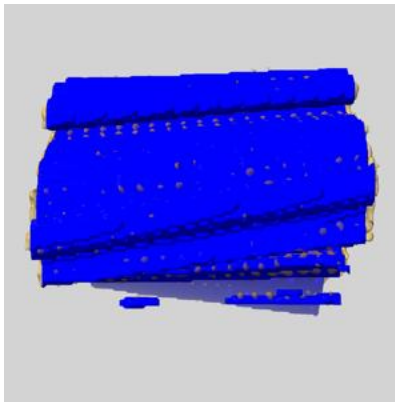
A mask typically either:

- Encompasses the whole structure
- Separates out a domain, a functional unit, a monomer or an area of interest from a larger structure

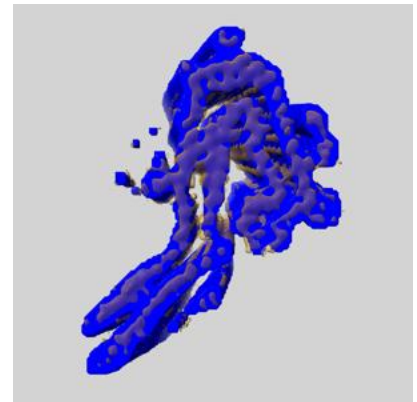
4.6.1 emd_50270_msk_1.map [i](#)



X



Y

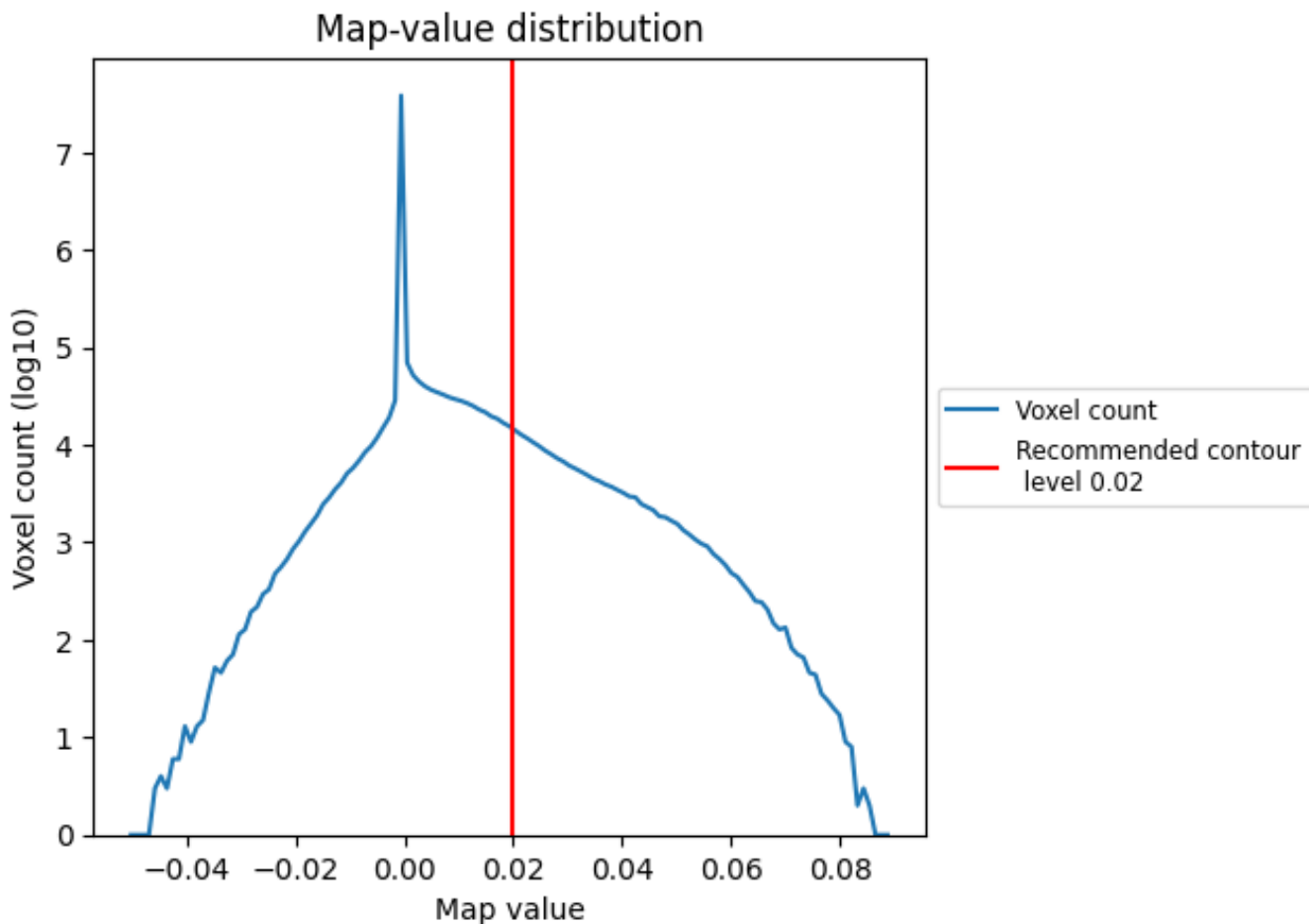


Z

5 Map analysis [i](#)

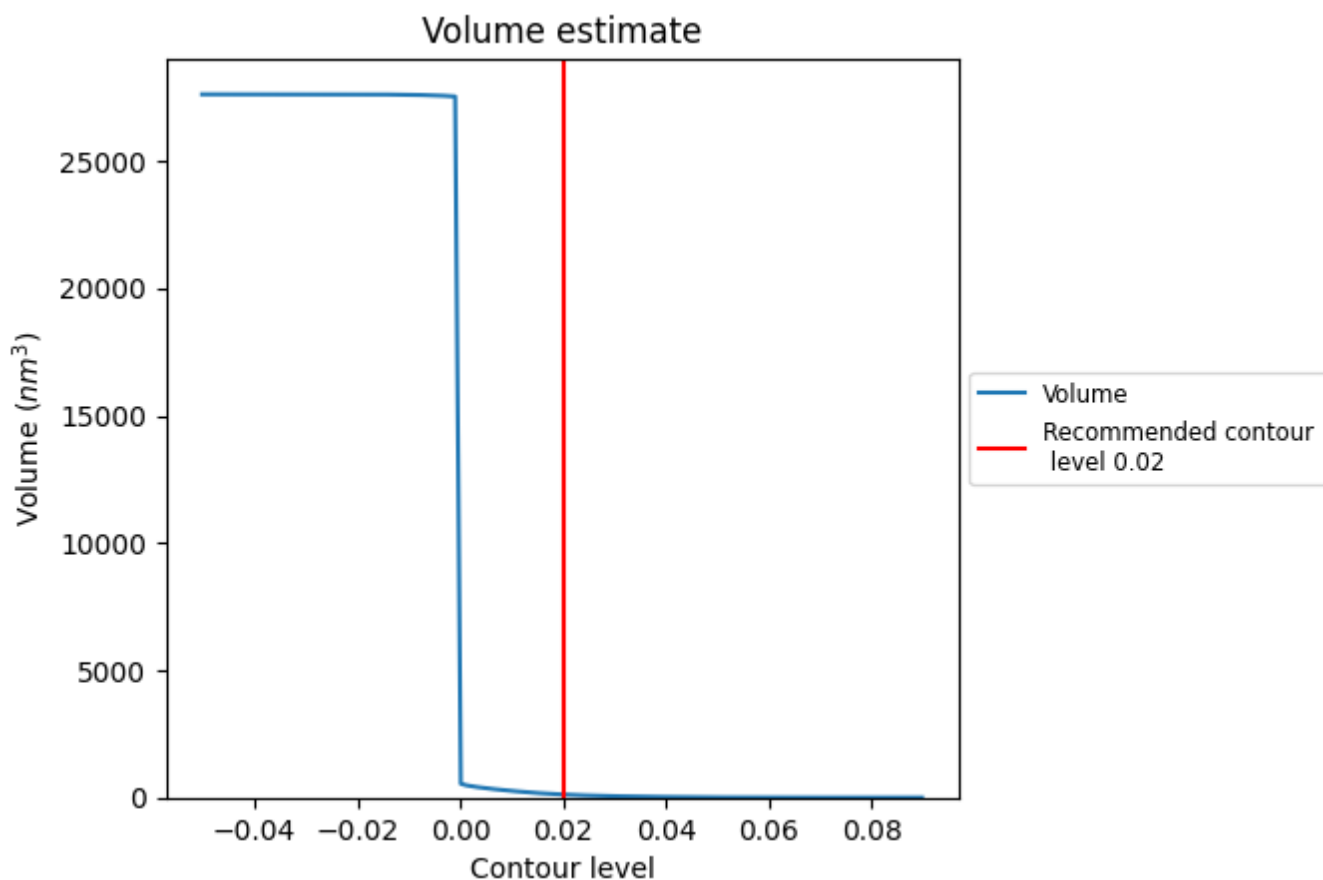
This section contains the results of statistical analysis of the map.

5.1 Map-value distribution [i](#)



The map-value distribution is plotted in 128 intervals along the x-axis. The y-axis is logarithmic. A spike in this graph at zero usually indicates that the volume has been masked.

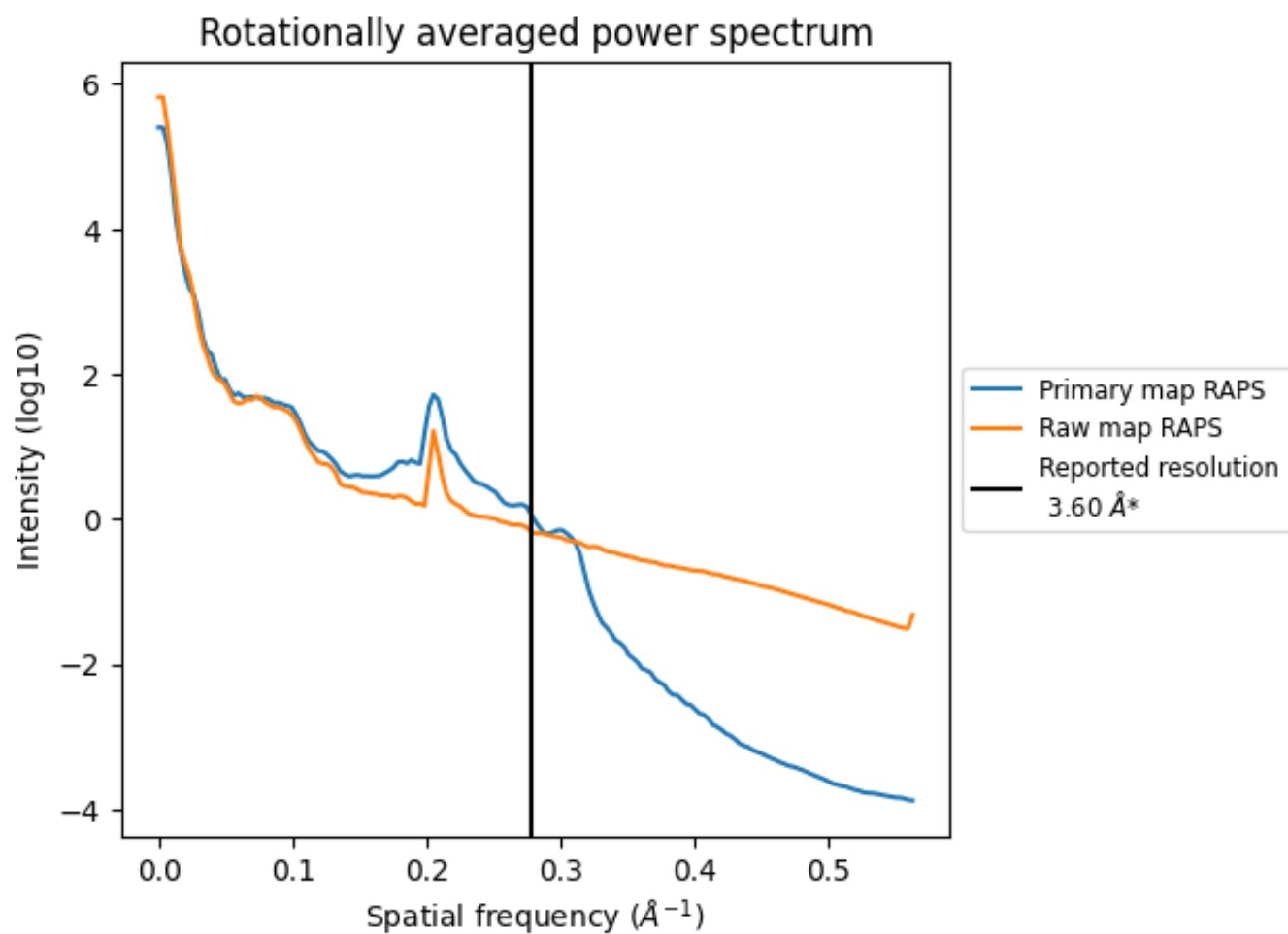
5.2 Volume estimate [\(i\)](#)



The volume at the recommended contour level is 120 nm³; this corresponds to an approximate mass of 108 kDa.

The volume estimate graph shows how the enclosed volume varies with the contour level. The recommended contour level is shown as a vertical line and the intersection between the line and the curve gives the volume of the enclosed surface at the given level.

5.3 Rotationally averaged power spectrum i

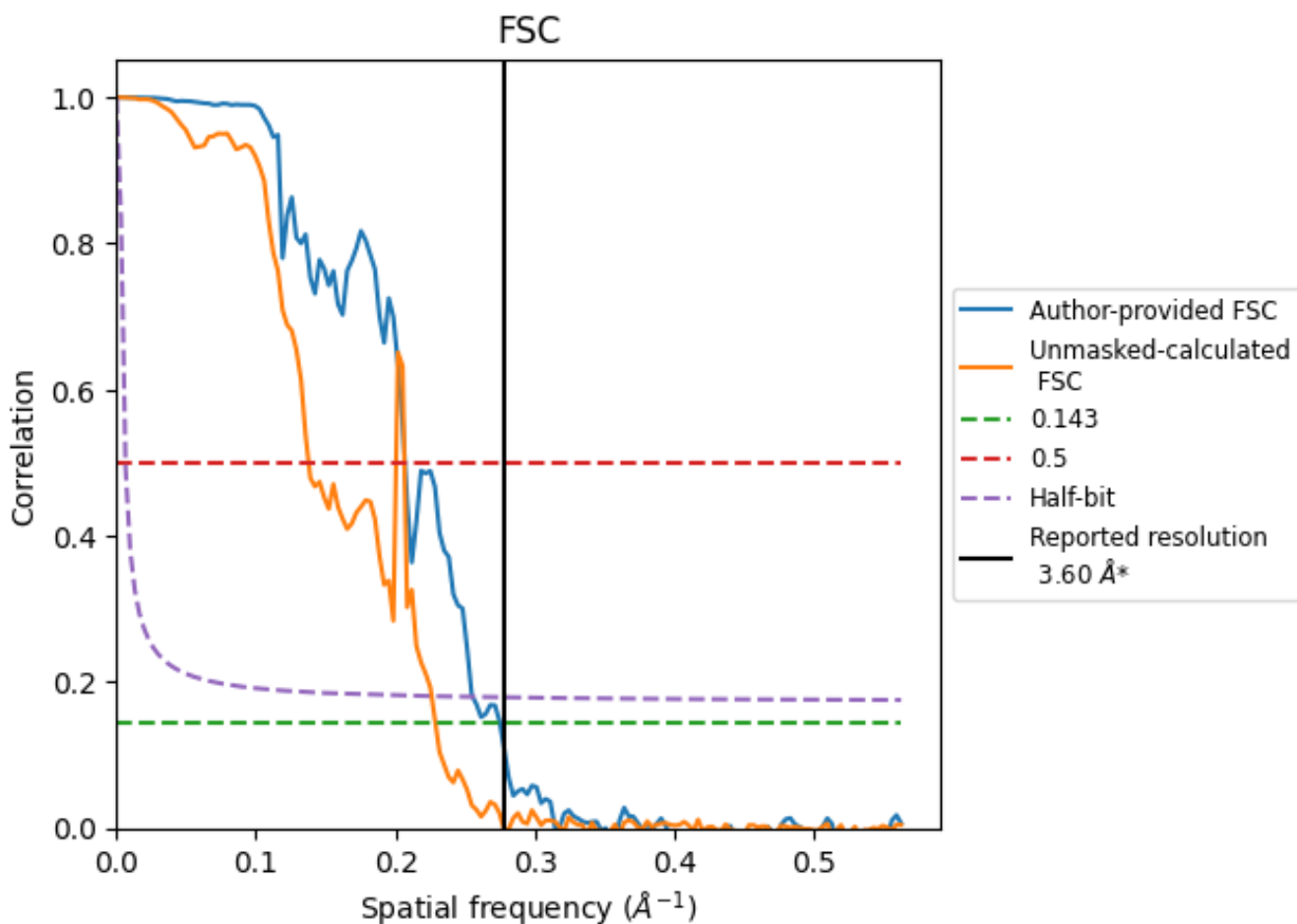


*Reported resolution corresponds to spatial frequency of 0.278 Å⁻¹

6 Fourier-Shell correlation [i](#)

Fourier-Shell Correlation (FSC) is the most commonly used method to estimate the resolution of single-particle and subtomogram-averaged maps. The shape of the curve depends on the imposed symmetry, mask and whether or not the two 3D reconstructions used were processed from a common reference. The reported resolution is shown as a black line. A curve is displayed for the half-bit criterion in addition to lines showing the 0.143 gold standard cut-off and 0.5 cut-off.

6.1 FSC [i](#)



*Reported resolution corresponds to spatial frequency of 0.278 Å⁻¹

6.2 Resolution estimates [i](#)

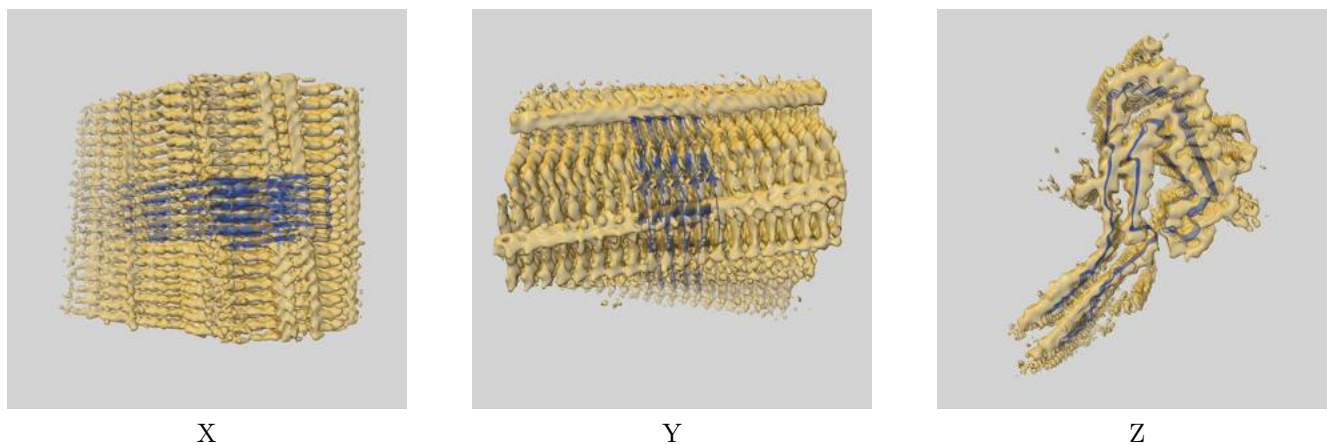
Resolution estimate (Å)	Estimation criterion (FSC cut-off)		
	0.143	0.5	Half-bit
Reported by author	3.60	-	-
Author-provided FSC curve	3.64	4.84	3.92
Unmasked-calculated*	4.37	7.26	4.43

*Resolution estimate based on FSC curve calculated by comparison of deposited half-maps. The value from deposited half-maps intersecting FSC 0.143 CUT-OFF 4.37 differs from the reported value 3.6 by more than 10 %

7 Map-model fit [i](#)

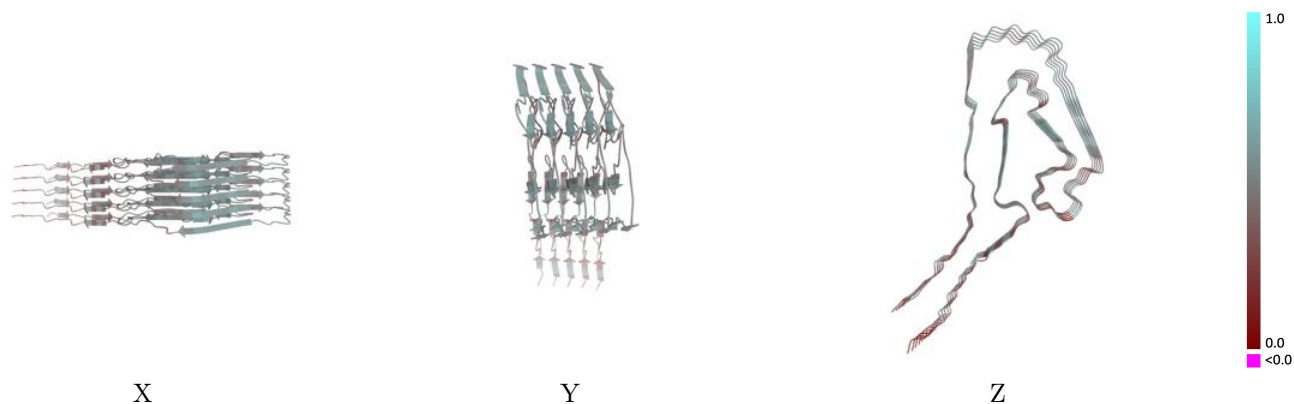
This section contains information regarding the fit between EMDB map EMD-50270 and PDB model 9FAA. Per-residue inclusion information can be found in section ?? on page ??.

7.1 Map-model overlay [i](#)



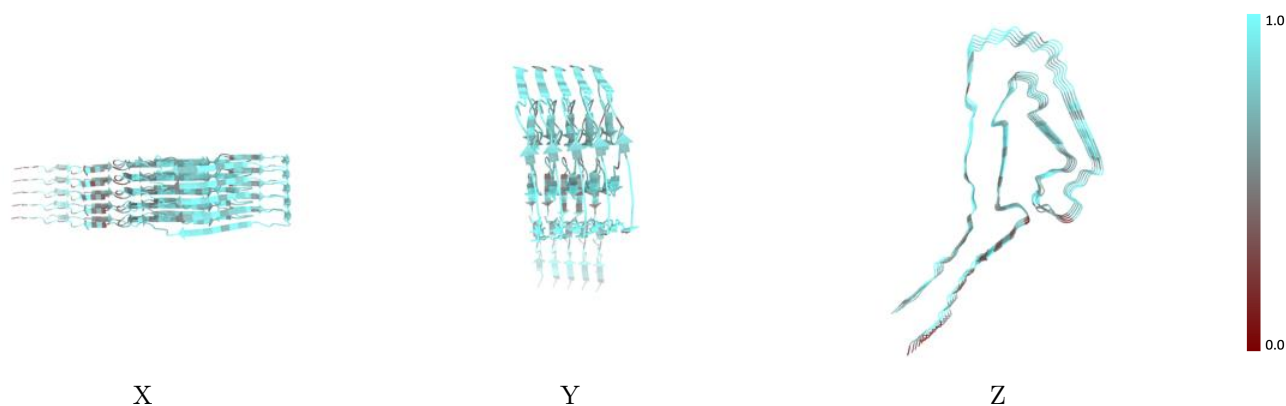
The images above show the 3D surface view of the map at the recommended contour level 0.02 at 50% transparency in yellow overlaid with a ribbon representation of the model coloured in blue. These images allow for the visual assessment of the quality of fit between the atomic model and the map.

7.2 Q-score mapped to coordinate model [i](#)



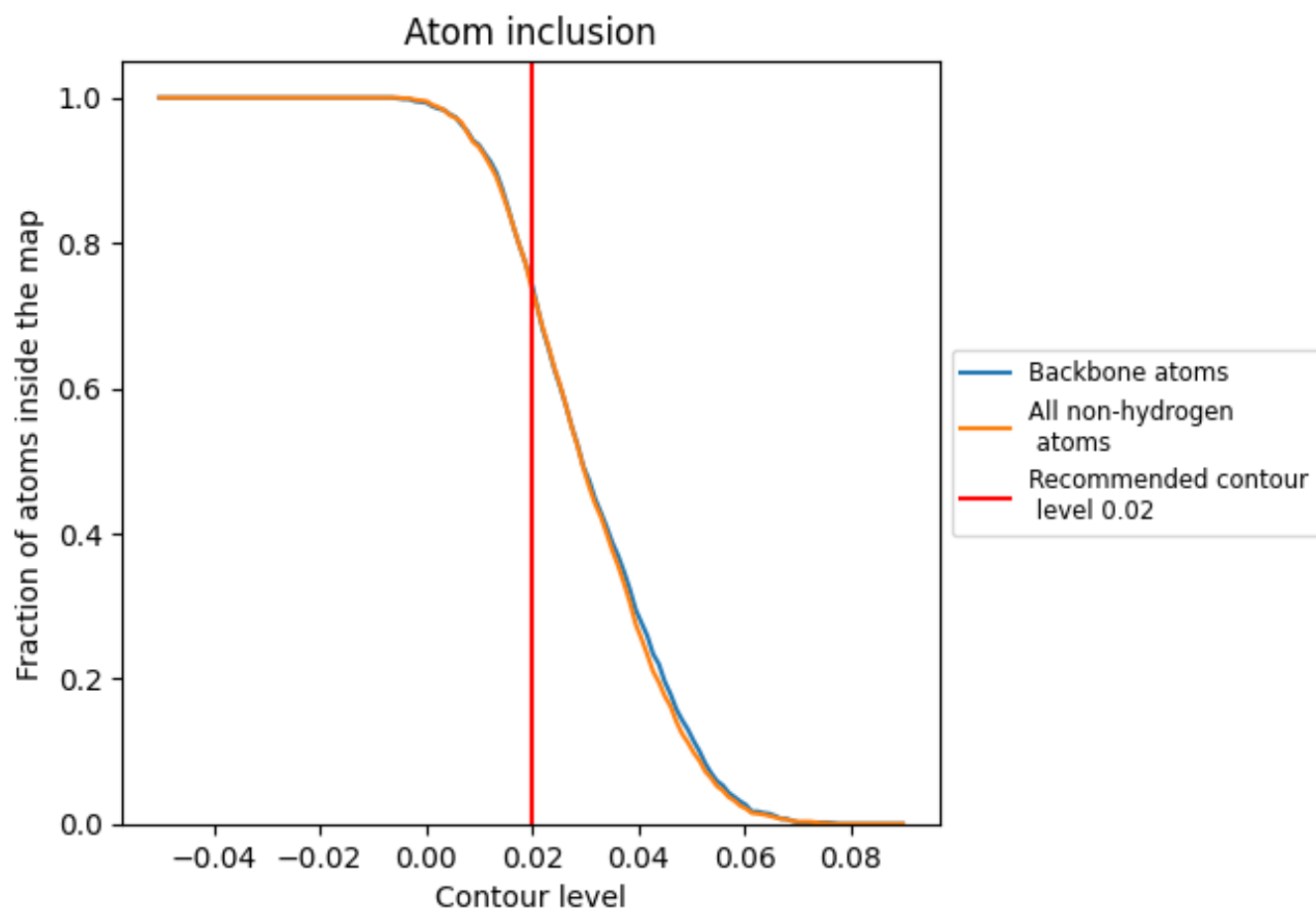
The images above show the model with each residue coloured according to its Q-score. This shows their resolvability in the map with higher Q-score values reflecting better resolvability. Please note: Q-score is calculating the resolvability of atoms, and thus high values are only expected at resolutions at which atoms can be resolved. Low Q-score values may therefore be expected for many entries.

7.3 Atom inclusion mapped to coordinate model [i](#)



The images above show the model with each residue coloured according to its atom inclusion. This shows to what extent they are inside the map at the recommended contour level (0.02).













7.4 Atom inclusion [i](#)



At the recommended contour level, 74% of all backbone atoms, 74% of all non-hydrogen atoms, are inside the map.

7.5 Map-model fit summary

The table lists the average atom inclusion at the recommended contour level (0.02) and Q-score for the entire model and for each chain.

Chain	Atom inclusion	Q-score
All	 0.7350	 0.4570
A	 0.7410	 0.4570
B	 0.7360	 0.4530
C	 0.7450	 0.4630
D	 0.7220	 0.4470
E	 0.7510	 0.4630

