



wwPDB X-ray Structure Validation Summary Report ⓘ

Jul 26, 2023 – 04:45 AM EDT

PDB ID : 1AXS
Title : MATURE OXY-COPE CATALYTIC ANTIBODY WITH HAPTEN
Authors : Mundorff, E.C.; Ulrich, H.D.; Stevens, R.C.
Deposited on : 1997-10-20
Resolution : 2.60 Å(reported)

This is a wwPDB X-ray Structure Validation Summary Report for a publicly released PDB entry.

We welcome your comments at validation@mail.wwpdb.org

A user guide is available at

<https://www.wwpdb.org/validation/2017/XrayValidationReportHelp>

with specific help available everywhere you see the ⓘ symbol.

The types of validation reports are described at

<http://www.wwpdb.org/validation/2017/FAQs#types>.

The following versions of software and data (see [references ⓘ](#)) were used in the production of this report:

MolProbity : 4.02b-467
Mogul : 1.8.5 (274361), CSD as541be (2020)
Xtriage (Phenix) : 1.13
EDS : 2.34
buster-report : 1.1.7 (2018)
Percentile statistics : 20191225.v01 (using entries in the PDB archive December 25th 2019)
Refmac : 5.8.0158
CCP4 : 7.0.044 (Gargrove)
Ideal geometry (proteins) : Engh & Huber (2001)
Ideal geometry (DNA, RNA) : Parkinson et al. (1996)
Validation Pipeline (wwPDB-VP) : 2.34

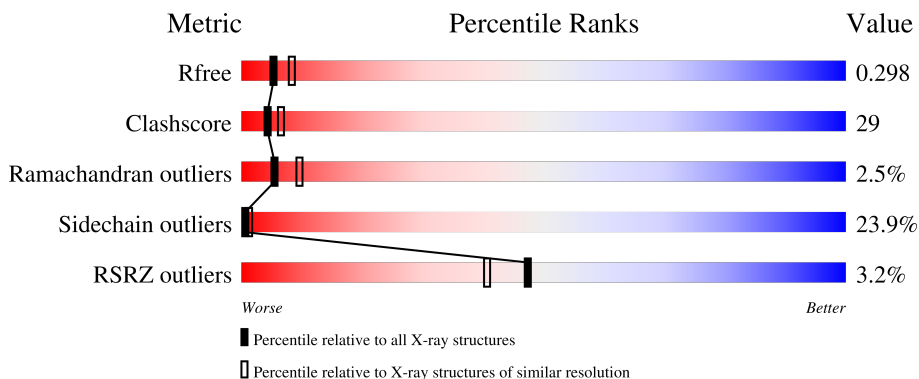
1 Overall quality at a glance

The following experimental techniques were used to determine the structure:

X-RAY DIFFRACTION

The reported resolution of this entry is 2.60 Å.

Percentile scores (ranging between 0-100) for global validation metrics of the entry are shown in the following graphic. The table shows the number of entries on which the scores are based.



Metric	Whole archive (#Entries)	Similar resolution (#Entries, resolution range(Å))
R_{free}	130704	3163 (2.60-2.60)
Clashscore	141614	3518 (2.60-2.60)
Ramachandran outliers	138981	3455 (2.60-2.60)
Sidechain outliers	138945	3455 (2.60-2.60)
RSRZ outliers	127900	3104 (2.60-2.60)

The table below summarises the geometric issues observed across the polymeric chains and their fit to the electron density. The red, orange, yellow and green segments of the lower bar indicate the fraction of residues that contain outliers for ≥ 3 , 2, 1 and 0 types of geometric quality criteria respectively. A grey segment represents the fraction of residues that are not modelled. The numeric value for each fraction is indicated below the corresponding segment, with a dot representing fractions $\leq 5\%$. The upper red bar (where present) indicates the fraction of residues that have poor fit to the electron density. The numeric value is given above the bar.

Mol	Chain	Length	Quality of chain
1	A	211	
1	L	211	
2	B	221	
2	H	221	

2 Entry composition [i](#)

There are 5 unique types of molecules in this entry. The entry contains 6887 atoms, of which 0 are hydrogens and 0 are deuteriums.

In the tables below, the ZeroOcc column contains the number of atoms modelled with zero occupancy, the AltConf column contains the number of residues with at least one atom in alternate conformation and the Trace column contains the number of residues modelled with at most 2 atoms.

- Molecule 1 is a protein called OXY-COPE CATALYTIC ANTIBODY.

Mol	Chain	Residues	Atoms					ZeroOcc	AltConf	Trace
			Total	C	N	O	S			
1	L	211	1655	1041	272	336	6	0	0	0
1	A	211	1655	1041	272	336	6	0	0	0

There are 60 discrepancies between the modelled and reference sequences:

Chain	Residue	Modelled	Actual	Comment	Reference
L	11	MET	LEU	conflict	GB 243868
L	12	TYR	SER	conflict	GB 243868
L	15	LEU	VAL	conflict	GB 243868
L	17	GLU	ASP	conflict	GB 243868
L	28	ASP	ASN	conflict	GB 243868
L	30	ASN	ASP	conflict	GB 243868
L	31	SER	LYS	conflict	GB 243868
L	36	PHE	TYR	conflict	GB 243868
L	43	SER	ALA	conflict	GB 243868
L	46	THR	LEU	conflict	GB 243868
L	50	ARG	ASN	conflict	GB 243868
L	53	ARG	ASN	conflict	GB 243868
L	55	VAL	GLN	conflict	GB 243868
L	56	ASP	THR	conflict	GB 243868
L	69	GLN	THR	conflict	GB 243868
L	71	TYR	PHE	conflict	GB 243868
L	72	SER	THR	conflict	GB 243868
L	73	LEU	PHE	conflict	GB 243868
L	79	GLU	GLN	conflict	GB 243868
L	80	TYR	PRO	conflict	GB 243868
L	83	MET	ILE	conflict	GB 243868
L	84	GLY	ALA	conflict	GB 243868
L	85	ILE	THR	conflict	GB 243868
L	91	TYR	HIS	conflict	GB 243868
L	92	ASP	ILE	conflict	GB 243868

Continued on next page...

Continued from previous page...

Chain	Residue	Modelled	Actual	Comment	Reference
L	93	GLU	SER	conflict	GB 243868
L	94	PHE	ARG	conflict	GB 243868
L	96	TYR	ARG	conflict	GB 243868
L	100	SER	GLN	conflict	GB 243868
L	104	LEU	VAL	conflict	GB 243868
A	11	MET	LEU	conflict	GB 243868
A	12	TYR	SER	conflict	GB 243868
A	15	LEU	VAL	conflict	GB 243868
A	17	GLU	ASP	conflict	GB 243868
A	28	ASP	ASN	conflict	GB 243868
A	30	ASN	ASP	conflict	GB 243868
A	31	SER	LYS	conflict	GB 243868
A	36	PHE	TYR	conflict	GB 243868
A	43	SER	ALA	conflict	GB 243868
A	46	THR	LEU	conflict	GB 243868
A	50	ARG	ASN	conflict	GB 243868
A	53	ARG	ASN	conflict	GB 243868
A	55	VAL	GLN	conflict	GB 243868
A	56	ASP	THR	conflict	GB 243868
A	69	GLN	THR	conflict	GB 243868
A	71	TYR	PHE	conflict	GB 243868
A	72	SER	THR	conflict	GB 243868
A	73	LEU	PHE	conflict	GB 243868
A	79	GLU	GLN	conflict	GB 243868
A	80	TYR	PRO	conflict	GB 243868
A	83	MET	ILE	conflict	GB 243868
A	84	GLY	ALA	conflict	GB 243868
A	85	ILE	THR	conflict	GB 243868
A	91	TYR	HIS	conflict	GB 243868
A	92	ASP	ILE	conflict	GB 243868
A	93	GLU	SER	conflict	GB 243868
A	94	PHE	ARG	conflict	GB 243868
A	96	TYR	ARG	conflict	GB 243868
A	100	SER	GLN	conflict	GB 243868
A	104	LEU	VAL	conflict	GB 243868

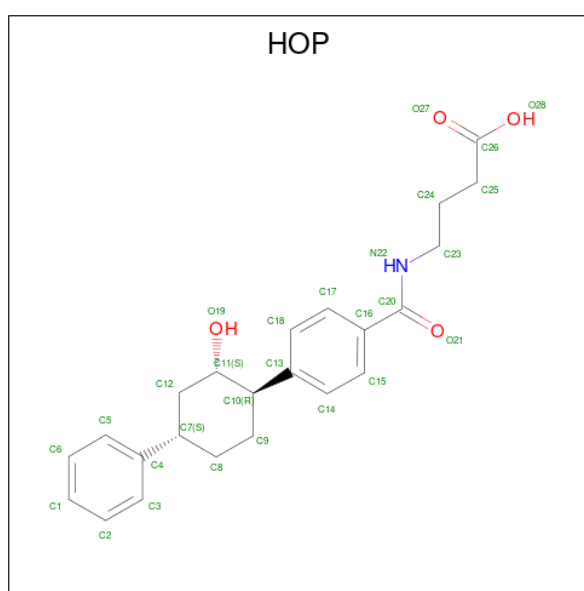
- Molecule 2 is a protein called OXY-COPE CATALYTIC ANTIBODY.

Mol	Chain	Residues	Atoms					ZeroOcc	AltConf	Trace
2	H	221	Total	C	N	O	S	0	0	0
			1664	1057	271	330	6			
2	B	221	Total	C	N	O	S	0	0	0
			1664	1057	271	330	6			

- Molecule 3 is CADMIUM ION (three-letter code: CD) (formula: Cd).

Mol	Chain	Residues	Atoms		ZeroOcc	AltConf
3	L	3	Total	Cd	0	0
			3	3		
3	H	2	Total	Cd	0	0
			2	2		
3	A	3	Total	Cd	0	0
			3	3		

- Molecule 4 is (1S,2S,5S)2-(4-GLUTARIDYLBENZYL)-5-PHENYL-1-CYCLOHEXANOL (three-letter code: HOP) (formula: C₂₃H₂₇NO₄).



Mol	Chain	Residues	Atoms				ZeroOcc	AltConf
4	H	1	Total	C	N	O	0	0
			28	23	1	4		
4	B	1	Total	C	N	O	0	0
			28	23	1	4		

- Molecule 5 is water.

Mol	Chain	Residues	Atoms		ZeroOcc	AltConf
5	L	56	Total	O	0	0
			56	56		
5	H	45	Total	O	0	0
			45	45		
5	A	47	Total	O	0	0
			47	47		

Continued on next page...

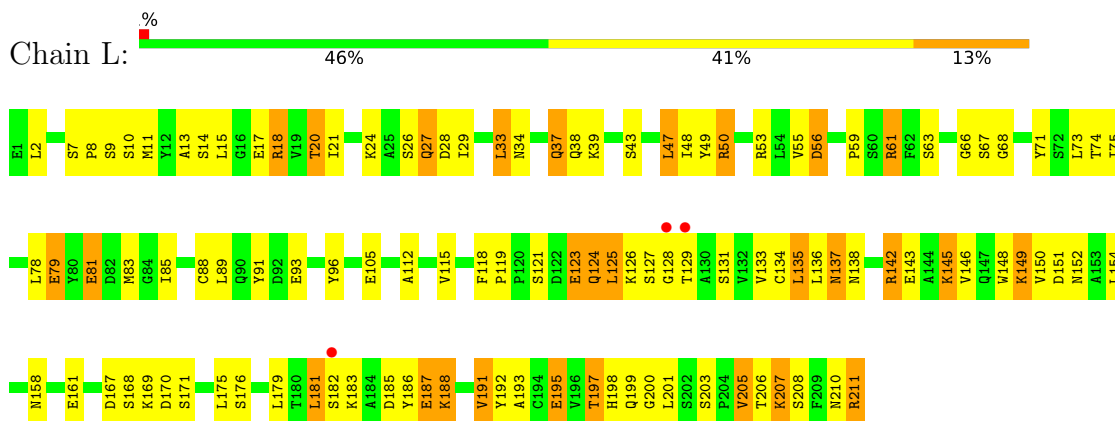
Continued from previous page...

Mol	Chain	Residues	Atoms		ZeroOcc	AltConf
5	B	37	Total	O	0	0
			37	37		

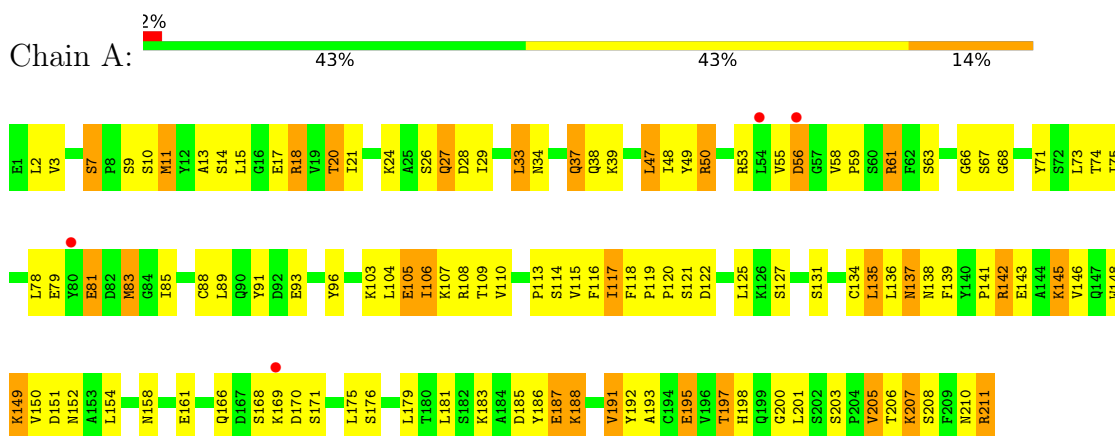
3 Residue-property plots [i](#)

These plots are drawn for all protein, RNA, DNA and oligosaccharide chains in the entry. The first graphic for a chain summarises the proportions of the various outlier classes displayed in the second graphic. The second graphic shows the sequence view annotated by issues in geometry and electron density. Residues are color-coded according to the number of geometric quality criteria for which they contain at least one outlier: green = 0, yellow = 1, orange = 2 and red = 3 or more. A red dot above a residue indicates a poor fit to the electron density ($RSRZ > 2$). Stretches of 2 or more consecutive residues without any outlier are shown as a green connector. Residues present in the sample, but not in the model, are shown in grey.

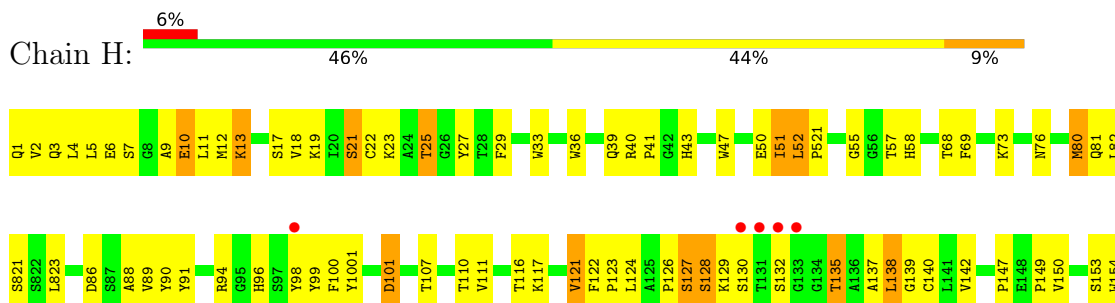
- Molecule 1: OXY-COPE CATALYTIC ANTIBODY



- Molecule 1: OXY-COPE CATALYTIC ANTIBODY

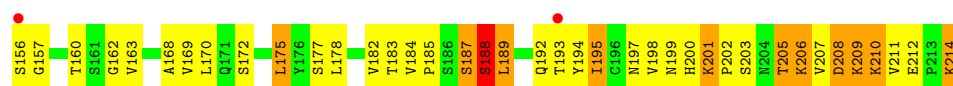
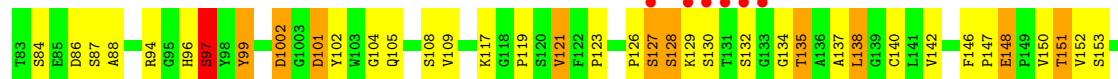


- Molecule 2: OXY-COPE CATALYTIC ANTIBODY





• Molecule 2: OXY-COPE CATALYTIC ANTIBODY



4 Data and refinement statistics

Property	Value	Source
Space group	P 1 21 1	Depositor
Cell constants a, b, c, α , β , γ	42.78Å 81.50Å 128.20Å 90.00° 93.43° 90.00°	Depositor
Resolution (Å)	20.00 – 2.60 37.79 – 2.60	Depositor EDS
% Data completeness (in resolution range)	91.1 (20.00-2.60) 90.2 (37.79-2.60)	Depositor EDS
R_{merge}	0.06	Depositor
R_{sym}	0.06	Depositor
$\langle I/\sigma(I) \rangle$ ¹	6.17 (at 2.61Å)	Xtrriage
Refinement program	X-PLOR 3.851	Depositor
R, R_{free}	0.200 , 0.305 0.201 , 0.298	Depositor DCC
R_{free} test set	2455 reflections (9.91%)	wwPDB-VP
Wilson B-factor (Å ²)	34.0	Xtrriage
Anisotropy	0.405	Xtrriage
Bulk solvent k_{sol} (e/Å ³), B_{sol} (Å ²)	0.34 , 72.5	EDS
L-test for twinning ²	$\langle L \rangle = 0.49$, $\langle L^2 \rangle = 0.33$	Xtrriage
Estimated twinning fraction	No twinning to report.	Xtrriage
F_o, F_c correlation	0.92	EDS
Total number of atoms	6887	wwPDB-VP
Average B, all atoms (Å ²)	36.0	wwPDB-VP

Xtrriage's analysis on translational NCS is as follows: *The largest off-origin peak in the Patterson function is 6.83% of the height of the origin peak. No significant pseudotranslation is detected.*

¹Intensities estimated from amplitudes.

²Theoretical values of $\langle |L| \rangle$, $\langle L^2 \rangle$ for acentric reflections are 0.5, 0.333 respectively for untwinned datasets, and 0.375, 0.2 for perfectly twinned datasets.

5 Model quality [i](#)

5.1 Standard geometry [i](#)

Bond lengths and bond angles in the following residue types are not validated in this section: CD, HOP

The Z score for a bond length (or angle) is the number of standard deviations the observed value is removed from the expected value. A bond length (or angle) with $|Z| > 5$ is considered an outlier worth inspection. RMSZ is the root-mean-square of all Z scores of the bond lengths (or angles).

Mol	Chain	Bond lengths		Bond angles	
		RMSZ	# $ Z > 5$	RMSZ	# $ Z > 5$
1	A	0.39	0/1691	0.61	0/2291
1	L	0.45	1/1691 (0.1%)	0.64	0/2291
2	B	0.41	0/1710	0.66	2/2325 (0.1%)
2	H	0.41	0/1710	0.64	0/2325
All	All	0.41	1/6802 (0.0%)	0.64	2/9232 (0.0%)

All (1) bond length outliers are listed below:

Mol	Chain	Res	Type	Atoms	Z	Observed(Å)	Ideal(Å)
1	L	79	GLU	CB-CG	5.48	1.62	1.52

All (2) bond angle outliers are listed below:

Mol	Chain	Res	Type	Atoms	Z	Observed(°)	Ideal(°)
2	B	148	GLU	N-CA-C	5.73	126.48	111.00
2	B	97	SER	N-CA-C	-5.22	96.91	111.00

There are no chirality outliers.

There are no planarity outliers.

5.2 Too-close contacts [i](#)

In the following table, the Non-H and H(model) columns list the number of non-hydrogen atoms and hydrogen atoms in the chain respectively. The H(added) column lists the number of hydrogen atoms added and optimized by MolProbity. The Clashes column lists the number of clashes within the asymmetric unit, whereas Symm-Clashes lists symmetry-related clashes.

Mol	Chain	Non-H	H(model)	H(added)	Clashes	Symm-Clashes
1	A	1655	0	1607	116	0

Continued on next page...

Continued from previous page...

Mol	Chain	Non-H	H(model)	H(added)	Clashes	Symm-Clashes
1	L	1655	0	1607	96	0
2	B	1664	0	1610	103	0
2	H	1664	0	1610	83	0
3	A	3	0	0	0	0
3	H	2	0	0	0	0
3	L	3	0	0	0	0
4	B	28	0	27	4	0
4	H	28	0	27	4	0
5	A	47	0	0	11	0
5	B	37	0	0	12	0
5	H	45	0	0	5	0
5	L	56	0	0	6	0
All	All	6887	0	6488	384	0

The all-atom clashscore is defined as the number of clashes found per 1000 atoms (including hydrogen atoms). The all-atom clashscore for this structure is 29.

The worst 5 of 384 close contacts within the same asymmetric unit are listed below, sorted by their clash magnitude.

Atom-1	Atom-2	Interatomic distance (Å)	Clash overlap (Å)
1:L:38:GLN:HE22	2:H:39:GLN:HE22	1.04	1.00
1:L:137:ASN:HD22	1:L:138:ASN:N	1.60	0.99
1:A:58:VAL:HG21	5:A:215:HOH:O	1.63	0.99
2:B:33:TRP:HB3	5:B:1017:HOH:O	1.63	0.97
1:A:137:ASN:HD22	1:A:138:ASN:N	1.62	0.97

There are no symmetry-related clashes.

5.3 Torsion angles [i](#)

5.3.1 Protein backbone [i](#)

In the following table, the Percentiles column shows the percent Ramachandran outliers of the chain as a percentile score with respect to all X-ray entries followed by that with respect to entries of similar resolution.

The Analysed column shows the number of residues for which the backbone conformation was analysed, and the total number of residues.

Mol	Chain	Analysed	Favoured	Allowed	Outliers	Percentiles	
1	A	209/211 (99%)	191 (91%)	17 (8%)	1 (0%)	29	52
1	L	209/211 (99%)	191 (91%)	15 (7%)	3 (1%)	11	22
2	B	219/221 (99%)	187 (85%)	23 (10%)	9 (4%)	3	3
2	H	219/221 (99%)	190 (87%)	21 (10%)	8 (4%)	3	4
All	All	856/864 (99%)	759 (89%)	76 (9%)	21 (2%)	5	9

5 of 21 Ramachandran outliers are listed below:

Mol	Chain	Res	Type
2	H	188	SER
2	H	202	PRO
2	H	213	PRO
1	L	128	GLY
2	H	128	SER

5.3.2 Protein sidechains [i](#)

In the following table, the Percentiles column shows the percent sidechain outliers of the chain as a percentile score with respect to all X-ray entries followed by that with respect to entries of similar resolution.

The Analysed column shows the number of residues for which the sidechain conformation was analysed, and the total number of residues.

Mol	Chain	Analysed	Rotameric	Outliers	Percentiles	
1	A	190/190 (100%)	142 (75%)	48 (25%)	0	1
1	L	190/190 (100%)	144 (76%)	46 (24%)	0	1
2	B	185/185 (100%)	140 (76%)	45 (24%)	0	1
2	H	185/185 (100%)	145 (78%)	40 (22%)	1	1
All	All	750/750 (100%)	571 (76%)	179 (24%)	0	1

5 of 179 residues with a non-rotameric sidechain are listed below:

Mol	Chain	Res	Type
1	A	131	SER
2	B	51	ILE
1	A	145	LYS
1	A	203	SER
2	B	97	SER

Sometimes sidechains can be flipped to improve hydrogen bonding and reduce clashes. 5 of 20 such sidechains are listed below:

Mol	Chain	Res	Type
2	B	39	GLN
2	B	197	ASN
2	B	200	HIS
2	B	199	ASN
2	H	43	HIS

5.3.3 RNA [i](#)

There are no RNA molecules in this entry.

5.4 Non-standard residues in protein, DNA, RNA chains [i](#)

There are no non-standard protein/DNA/RNA residues in this entry.

5.5 Carbohydrates [i](#)

There are no monosaccharides in this entry.

5.6 Ligand geometry [i](#)

Of 10 ligands modelled in this entry, 8 are monoatomic - leaving 2 for Mogul analysis.

In the following table, the Counts columns list the number of bonds (or angles) for which Mogul statistics could be retrieved, the number of bonds (or angles) that are observed in the model and the number of bonds (or angles) that are defined in the Chemical Component Dictionary. The Link column lists molecule types, if any, to which the group is linked. The Z score for a bond length (or angle) is the number of standard deviations the observed value is removed from the expected value. A bond length (or angle) with $|Z| > 2$ is considered an outlier worth inspection. RMSZ is the root-mean-square of all Z scores of the bond lengths (or angles).

Mol	Type	Chain	Res	Link	Bond lengths			Bond angles		
					Counts	RMSZ	$\# Z > 2$	Counts	RMSZ	$\# Z > 2$
4	HOP	B	1004	-	29,30,30	1.97	10 (34%)	39,40,40	0.58	0
4	HOP	H	1006	-	29,30,30	2.25	14 (48%)	39,40,40	0.82	1 (2%)

In the following table, the Chirals column lists the number of chiral outliers, the number of chiral centers analysed, the number of these observed in the model and the number defined in the Chemical Component Dictionary. Similar counts are reported in the Torsion and Rings columns. '-' means no outliers of that kind were identified.

Mol	Type	Chain	Res	Link	Chirals	Torsions	Rings
4	HOP	B	1004	-	-	8/19/32/32	0/3/3/3
4	HOP	H	1006	-	-	3/19/32/32	0/3/3/3

The worst 5 of 24 bond length outliers are listed below:

Mol	Chain	Res	Type	Atoms	Z	Observed(Å)	Ideal(Å)
4	B	1004	HOP	C13-C10	4.03	1.57	1.51
4	H	1006	HOP	C13-C10	3.97	1.57	1.51
4	H	1006	HOP	C15-C16	3.62	1.45	1.39
4	H	1006	HOP	C12-C7	3.46	1.57	1.53
4	H	1006	HOP	C5-C4	3.46	1.44	1.39

All (1) bond angle outliers are listed below:

Mol	Chain	Res	Type	Atoms	Z	Observed(°)	Ideal(°)
4	H	1006	HOP	C18-C13-C10	-2.37	116.59	121.08

There are no chirality outliers.

5 of 11 torsion outliers are listed below:

Mol	Chain	Res	Type	Atoms
4	B	1004	HOP	C23-C24-C25-C26
4	B	1004	HOP	C17-C16-C20-O21
4	B	1004	HOP	C17-C16-C20-N22
4	B	1004	HOP	C15-C16-C20-O21
4	B	1004	HOP	C15-C16-C20-N22

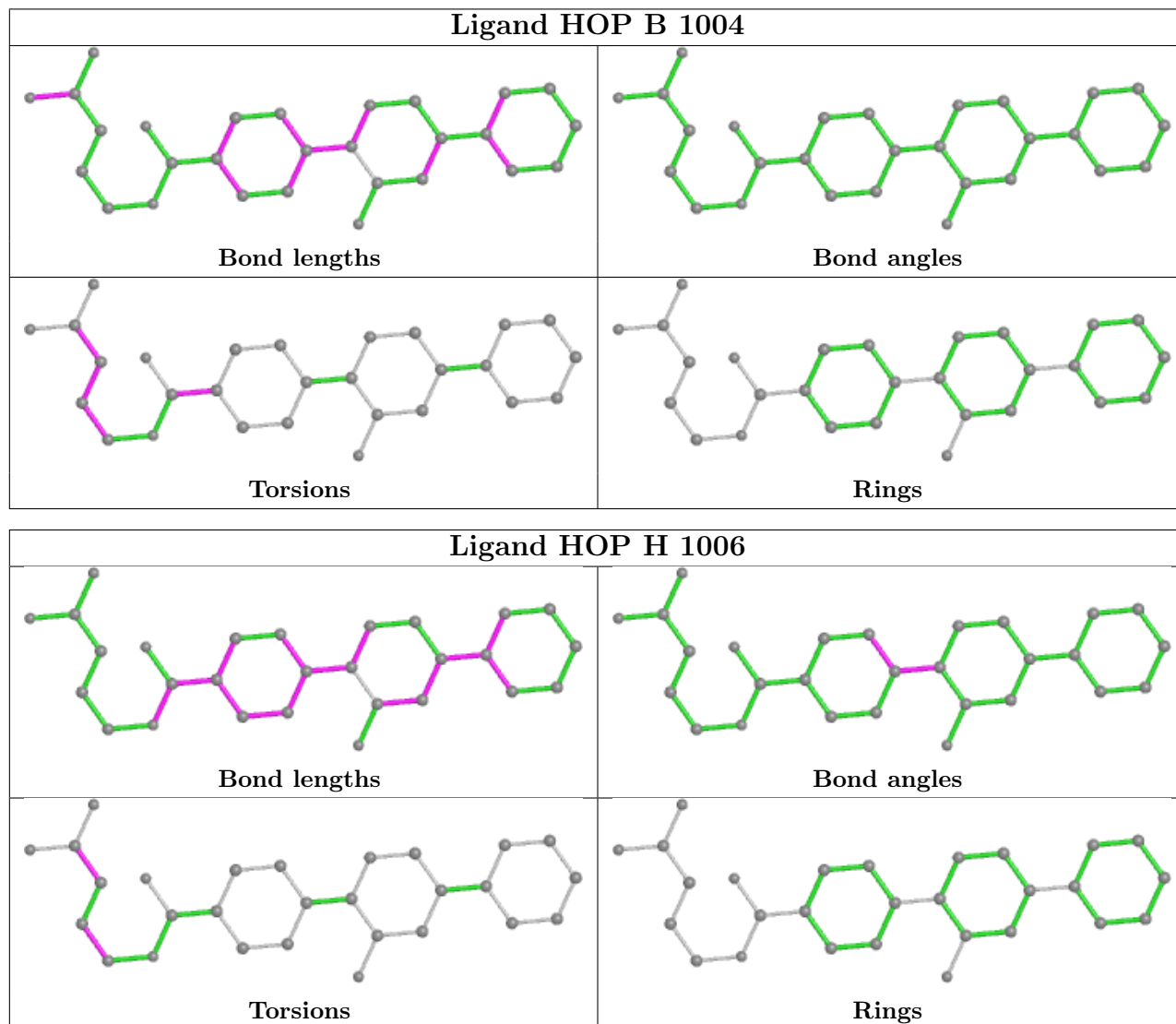
There are no ring outliers.

2 monomers are involved in 8 short contacts:

Mol	Chain	Res	Type	Clashes	Symm-Clashes
4	B	1004	HOP	4	0
4	H	1006	HOP	4	0

The following is a two-dimensional graphical depiction of Mogul quality analysis of bond lengths, bond angles, torsion angles, and ring geometry for all instances of the Ligand of Interest. In addition, ligands with molecular weight > 250 and outliers as shown on the validation Tables will also be included. For torsion angles, if less than 5% of the Mogul distribution of torsion angles is within 10 degrees of the torsion angle in question, then that torsion angle is considered an outlier. Any bond that is central to one or more torsion angles identified as an outlier by Mogul will be highlighted in the graph. For rings, the root-mean-square deviation (RMSD) between the ring in question and similar rings identified by Mogul is calculated over all ring torsion angles. If the

average RMSD is greater than 60 degrees and the minimal RMSD between the ring in question and any Mogul-identified rings is also greater than 60 degrees, then that ring is considered an outlier. The outliers are highlighted in purple. The color gray indicates Mogul did not find sufficient equivalents in the CSD to analyse the geometry.



5.7 Other polymers [i](#)

There are no such residues in this entry.

5.8 Polymer linkage issues [i](#)

There are no chain breaks in this entry.

6 Fit of model and data [i](#)

6.1 Protein, DNA and RNA chains [i](#)

In the following table, the column labelled ‘#RSRZ > 2’ contains the number (and percentage) of RSRZ outliers, followed by percent RSRZ outliers for the chain as percentile scores relative to all X-ray entries and entries of similar resolution. The OWAB column contains the minimum, median, 95th percentile and maximum values of the occupancy-weighted average B-factor per residue. The column labelled ‘Q < 0.9’ lists the number of (and percentage) of residues with an average occupancy less than 0.9.

Mol	Chain	Analysed	<RSRZ>	#RSRZ>2	OWAB(Å ²)	Q<0.9
1	A	211/211 (100%)	-0.04	4 (1%) 66 62	20, 42, 66, 87	0
1	L	211/211 (100%)	-0.28	3 (1%) 75 71	8, 27, 57, 71	0
2	B	221/221 (100%)	-0.03	8 (3%) 42 35	9, 33, 82, 99	0
2	H	221/221 (100%)	0.01	13 (5%) 22 17	9, 31, 79, 100	0
All	All	864/864 (100%)	-0.08	28 (3%) 47 40	8, 33, 72, 100	0

The worst 5 of 28 RSRZ outliers are listed below:

Mol	Chain	Res	Type	RSRZ
2	H	131	THR	7.0
2	H	130	SER	6.3
2	B	127	SER	4.6
2	H	133	GLY	4.4
2	H	161	SER	4.3

6.2 Non-standard residues in protein, DNA, RNA chains [i](#)

There are no non-standard protein/DNA/RNA residues in this entry.

6.3 Carbohydrates [i](#)

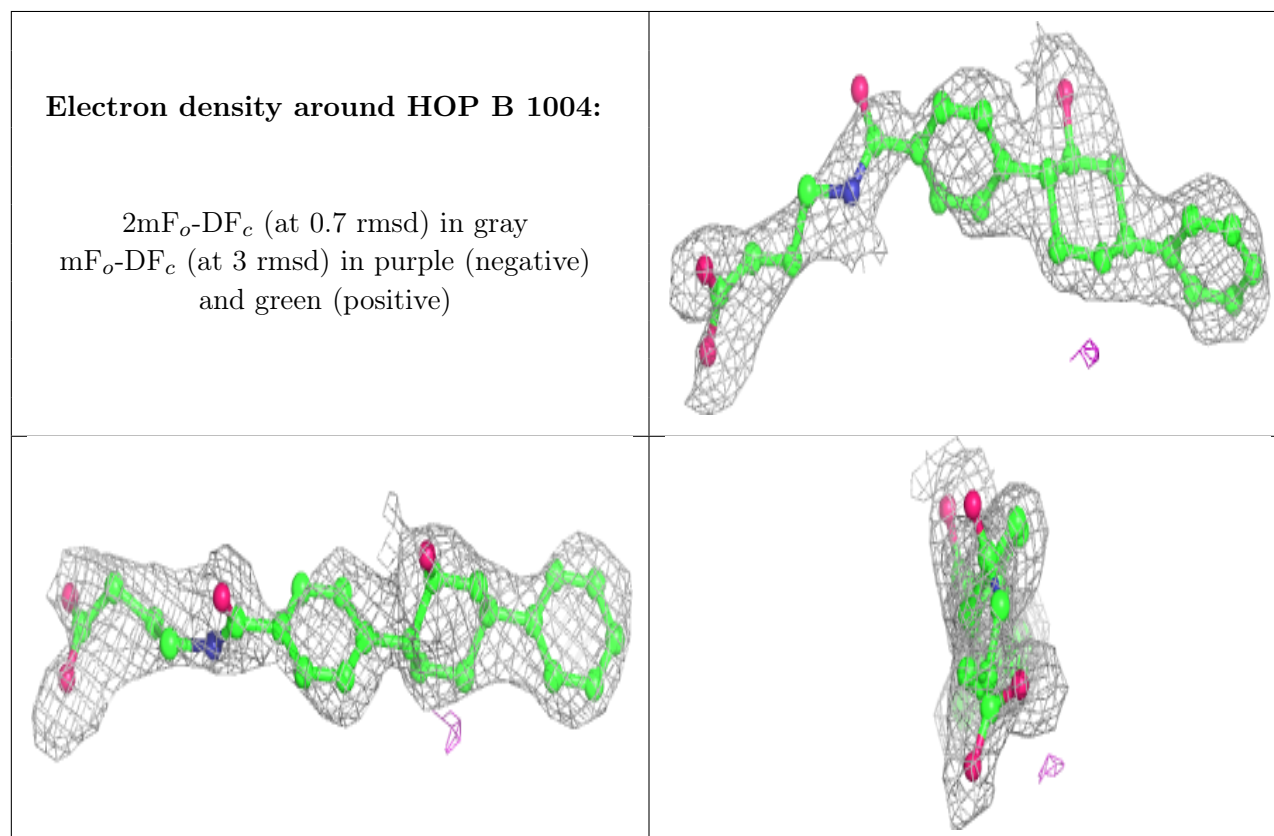
There are no monosaccharides in this entry.

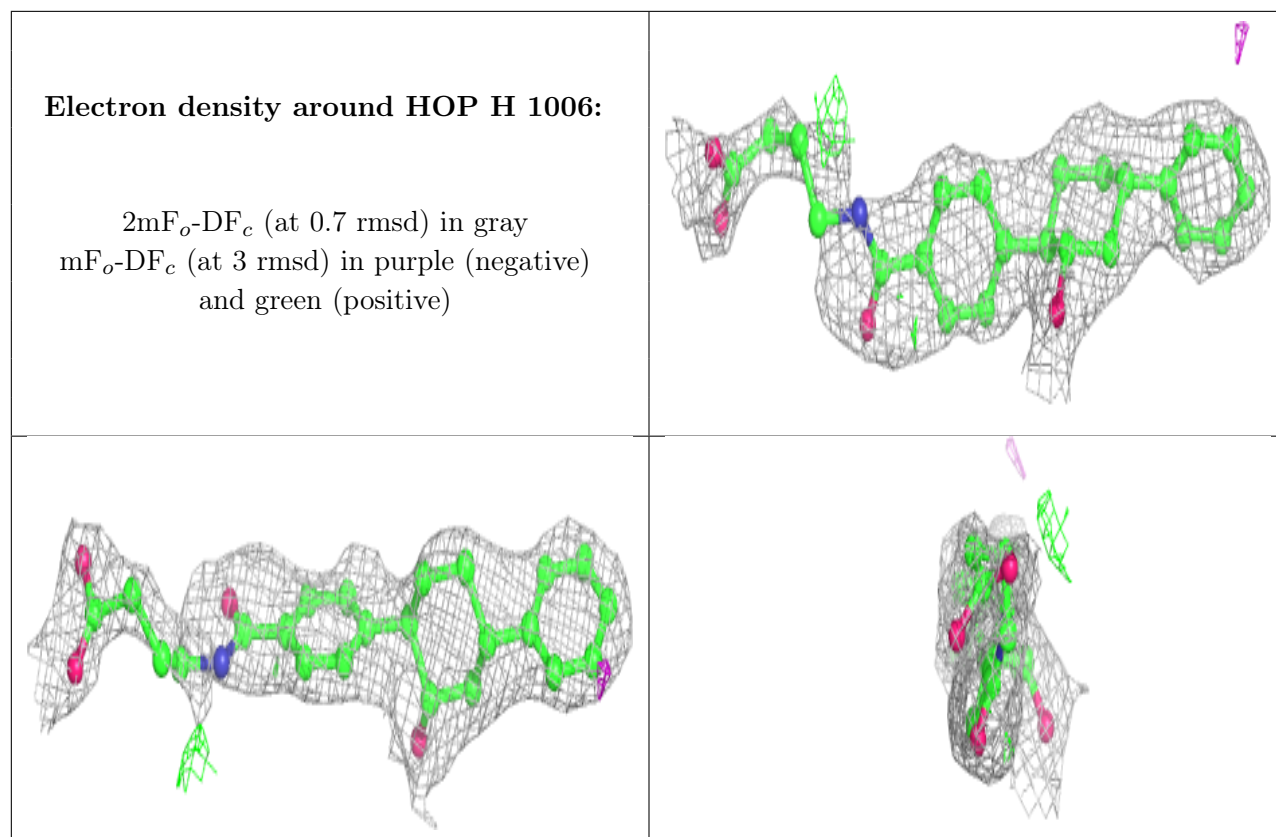
6.4 Ligands [i](#)

In the following table, the Atoms column lists the number of modelled atoms in the group and the number defined in the chemical component dictionary. The B-factors column lists the minimum, median, 95th percentile and maximum values of B factors of atoms in the group. The column labelled ‘Q < 0.9’ lists the number of atoms with occupancy less than 0.9.

Mol	Type	Chain	Res	Atoms	RSCC	RSR	B-factors(\AA^2)	Q<0.9
4	HOP	B	1004	28/28	0.89	0.22	26,50,71,82	0
4	HOP	H	1006	28/28	0.90	0.21	12,30,63,66	0
3	CD	H	1005	1/1	0.95	0.07	85,85,85,85	0
3	CD	A	212	1/1	0.96	0.12	47,47,47,47	1
3	CD	A	213	1/1	0.96	0.09	55,55,55,55	1
3	CD	H	1004	1/1	0.98	0.05	50,50,50,50	1
3	CD	L	212	1/1	0.98	0.14	39,39,39,39	1
3	CD	L	213	1/1	0.98	0.06	57,57,57,57	0
3	CD	L	214	1/1	1.00	0.13	27,27,27,27	0
3	CD	A	214	1/1	1.00	0.07	46,46,46,46	0

The following is a graphical depiction of the model fit to experimental electron density of all instances of the Ligand of Interest. In addition, ligands with molecular weight > 250 and outliers as shown on the geometry validation Tables will also be included. Each fit is shown from different orientation to approximate a three-dimensional view.





6.5 Other polymers [i](#)

There are no such residues in this entry.