



# Full wwPDB X-ray Structure Validation Report ⓘ

Mar 23, 2024 – 10:53 PM EDT

PDB ID : 1TSN  
Title : THYMIDYLATE SYNTHASE TERNARY COMPLEX WITH FDUMP AND METHYLENETETRAHYDROFOLATE  
Authors : Hyatt, D.C.; Maley, F.; Montfort, W.R.  
Deposited on : 1996-12-02  
Resolution : 2.20 Å(reported)

This is a Full wwPDB X-ray Structure Validation Report for a publicly released PDB entry.

We welcome your comments at [validation@mail.wwpdb.org](mailto:validation@mail.wwpdb.org)

A user guide is available at

<https://www.wwpdb.org/validation/2017/XrayValidationReportHelp>

with specific help available everywhere you see the ⓘ symbol.

The types of validation reports are described at

<http://www.wwpdb.org/validation/2017/FAQs#types>.

---

The following versions of software and data (see [references ⓘ](#)) were used in the production of this report:

MolProbity : 4.02b-467  
Mogul : 1.8.5 (274361), CSD as541be (2020)  
Xtriage (Phenix) : 1.13  
EDS : 2.36.1  
buster-report : 1.1.7 (2018)  
Percentile statistics : 20191225.v01 (using entries in the PDB archive December 25th 2019)  
Refmac : 5.8.0158  
CCP4 : 7.0.044 (Gargrove)  
Ideal geometry (proteins) : Engh & Huber (2001)  
Ideal geometry (DNA, RNA) : Parkinson et al. (1996)  
Validation Pipeline (wwPDB-VP) : 2.36.1

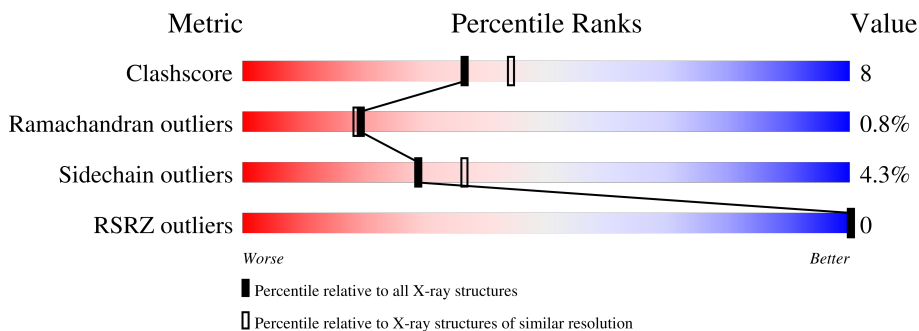
# 1 Overall quality at a glance

The following experimental techniques were used to determine the structure:

*X-RAY DIFFRACTION*


The reported resolution of this entry is 2.20 Å.

Percentile scores (ranging between 0-100) for global validation metrics of the entry are shown in the following graphic. The table shows the number of entries on which the scores are based.



Metric	Whole archive (#Entries)	Similar resolution (#Entries, resolution range(Å))
Clashscore	141614	5594 (2.20-2.20)
Ramachandran outliers	138981	5503 (2.20-2.20)
Sidechain outliers	138945	5504 (2.20-2.20)
RSRZ outliers	127900	4800 (2.20-2.20)

The table below summarises the geometric issues observed across the polymeric chains and their fit to the electron density. The red, orange, yellow and green segments of the lower bar indicate the fraction of residues that contain outliers for  $\geq 3$ , 2, 1 and 0 types of geometric quality criteria respectively. A grey segment represents the fraction of residues that are not modelled. The numeric value for each fraction is indicated below the corresponding segment, with a dot representing fractions  $\leq 5\%$ . The upper red bar (where present) indicates the fraction of residues that have poor fit to the electron density. The numeric value is given above the bar.

Mol	Chain	Length	Quality of chain
1	A	264	

The following table lists non-polymeric compounds, carbohydrate monomers and non-standard residues in protein, DNA, RNA chains that are outliers for geometric or electron-density-fit criteria:

Mol	Type	Chain	Res	Chirality	Geometry	Clashes	Electron density
2	PO4	A	267	-	X	-	-

## 2 Entry composition [i](#)

There are 5 unique types of molecules in this entry. The entry contains 2322 atoms, of which 0 are hydrogens and 0 are deuteriums.

In the tables below, the ZeroOcc column contains the number of atoms modelled with zero occupancy, the AltConf column contains the number of residues with at least one atom in alternate conformation and the Trace column contains the number of residues modelled with at most 2 atoms.

- Molecule 1 is a protein called THYMIDYLATE SYNTHASE.

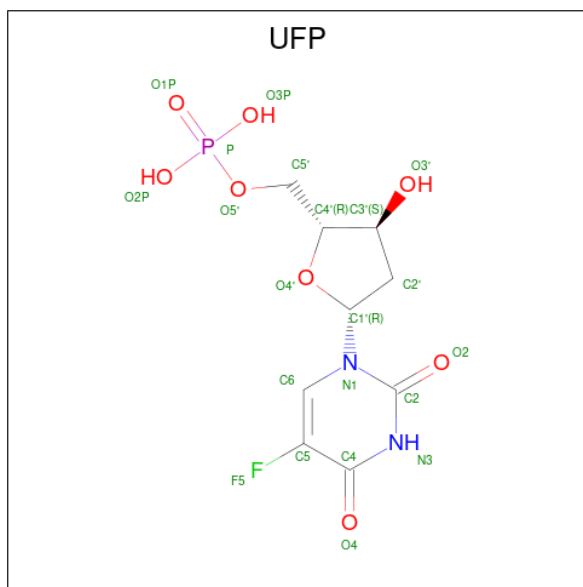
Mol	Chain	Residues	Atoms					ZeroOcc	AltConf	Trace
			Total	C	N	O	S			
1	A	264	2153	1375	371	395	12	0	0	0

- Molecule 2 is PHOSPHATE ION (three-letter code: PO4) (formula: O<sub>4</sub>P).



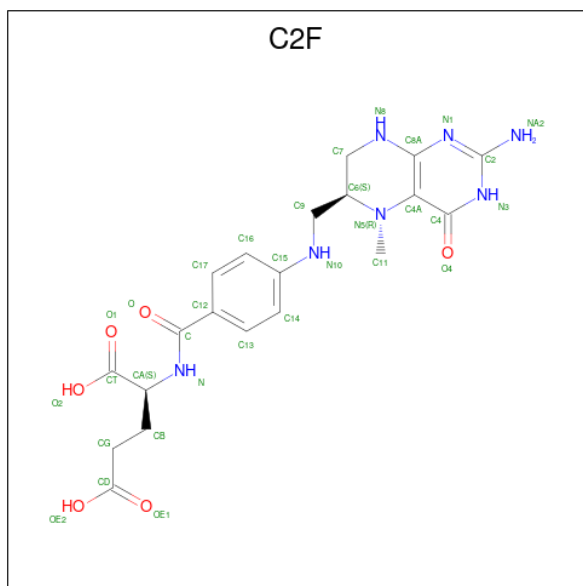
Mol	Chain	Residues	Atoms			ZeroOcc	AltConf
			Total	O	P		
2	A	1	5	4	1	0	0

- Molecule 3 is 5-FLUORO-2'-DEOXYURIDINE-5'-MONOPHOSPHATE (three-letter code: UFP) (formula: C<sub>9</sub>H<sub>12</sub>FN<sub>2</sub>O<sub>8</sub>P).



Mol	Chain	Residues	Atoms					ZeroOcc	AltConf	
			Total	C	F	N	O			P
3	A	1	21	9	1	2	8	1	0	0

- Molecule 4 is 5-METHYL-5,6,7,8-TETRAHYDROFOLIC ACID (three-letter code: C2F) (formula:  $C_{20}H_{25}N_7O_6$ ).



Mol	Chain	Residues	Atoms			ZeroOcc	AltConf	
			Total	C	N			O
4	A	1	33	20	7	6	0	0

- Molecule 5 is water.

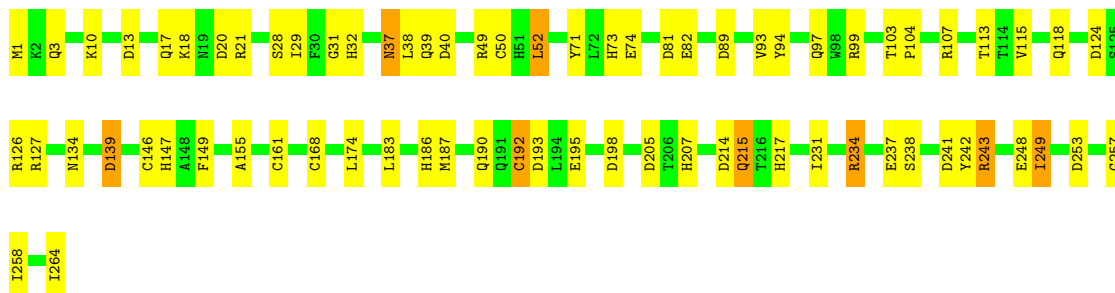
<b>Mol</b>	<b>Chain</b>	<b>Residues</b>	<b>Atoms</b>		<b>ZeroOcc</b>	<b>AltConf</b>
5	A	110	Total 110	O 110	0	0

### 3 Residue-property plots [i](#)

These plots are drawn for all protein, RNA, DNA and oligosaccharide chains in the entry. The first graphic for a chain summarises the proportions of the various outlier classes displayed in the second graphic. The second graphic shows the sequence view annotated by issues in geometry and electron density. Residues are color-coded according to the number of geometric quality criteria for which they contain at least one outlier: green = 0, yellow = 1, orange = 2 and red = 3 or more. A red dot above a residue indicates a poor fit to the electron density ( $RSRZ > 2$ ). Stretches of 2 or more consecutive residues without any outlier are shown as a green connector. Residues present in the sample, but not in the model, are shown in grey.

- Molecule 1: THYMIDYLATE SYNTHASE

Chain A:  72% 25%



## 4 Data and refinement statistics

Property	Value	Source
Space group	P 31 2 1	Depositor
Cell constants a, b, c, $\alpha$ , $\beta$ , $\gamma$	72.10Å 72.10Å 115.27Å 90.00° 90.00° 120.00°	Depositor
Resolution (Å)	9.00 – 2.20 19.42 – 2.20	Depositor EDS
% Data completeness (in resolution range)	98.0 (9.00-2.20) 89.9 (19.42-2.20)	Depositor EDS
$R_{merge}$	(Not available)	Depositor
$R_{sym}$	0.10	Depositor
$\langle I/\sigma(I) \rangle$ <sup>1</sup>	3.60 (at 2.19Å)	Xtrriage
Refinement program	GPRLSA	Depositor
R, $R_{free}$	0.178 , (Not available) 0.162 , (Not available)	Depositor DCC
$R_{free}$ test set	No test flags present.	wwPDB-VP
Wilson B-factor (Å <sup>2</sup> )	26.4	Xtrriage
Anisotropy	0.193	Xtrriage
Bulk solvent $k_{sol}$ (e/Å <sup>3</sup> ), $B_{sol}$ (Å <sup>2</sup> )	0.32 , 52.9	EDS
L-test for twinning <sup>2</sup>	$\langle  L  \rangle = 0.52$ , $\langle L^2 \rangle = 0.35$	Xtrriage
Estimated twinning fraction	0.021 for -h,-k,l	Xtrriage
$F_o, F_c$ correlation	0.97	EDS
Total number of atoms	2322	wwPDB-VP
Average B, all atoms (Å <sup>2</sup> )	21.0	wwPDB-VP

Xtrriage's analysis on translational NCS is as follows: *The largest off-origin peak in the Patterson function is 4.55% of the height of the origin peak. No significant pseudotranslation is detected.*

<sup>1</sup>Intensities estimated from amplitudes.

<sup>2</sup>Theoretical values of  $\langle |L| \rangle$ ,  $\langle L^2 \rangle$  for acentric reflections are 0.5, 0.333 respectively for untwinned datasets, and 0.375, 0.2 for perfectly twinned datasets.

## 5 Model quality i

### 5.1 Standard geometry i

Bond lengths and bond angles in the following residue types are not validated in this section: CXM, C2F, UFP, PO4

The Z score for a bond length (or angle) is the number of standard deviations the observed value is removed from the expected value. A bond length (or angle) with  $|Z| > 5$  is considered an outlier worth inspection. RMSZ is the root-mean-square of all Z scores of the bond lengths (or angles).

Mol	Chain	Bond lengths		Bond angles	
		RMSZ	# Z  >5	RMSZ	# Z  >5
1	A	0.97	0/2202	1.92	46/2990 (1.5%)

There are no bond length outliers.

All (46) bond angle outliers are listed below:

Mol	Chain	Res	Type	Atoms	Z	Observed(°)	Ideal(°)
1	A	127	ARG	NE-CZ-NH2	20.24	130.42	120.30
1	A	127	ARG	NE-CZ-NH1	-13.36	113.62	120.30
1	A	198	ASP	CB-CG-OD1	12.73	129.75	118.30
1	A	205	ASP	CB-CG-OD2	12.67	129.70	118.30
1	A	13	ASP	CB-CG-OD2	-11.15	108.26	118.30
1	A	234	ARG	NE-CZ-NH1	10.07	125.33	120.30
1	A	253	ASP	CB-CG-OD2	-9.14	110.08	118.30
1	A	253	ASP	CB-CG-OD1	7.87	125.39	118.30
1	A	71	TYR	CB-CG-CD1	-7.31	116.61	121.00
1	A	195	GLU	CG-CD-OE1	-7.23	103.83	118.30
1	A	214	ASP	CB-CG-OD2	-7.07	111.94	118.30
1	A	40	ASP	CB-CG-OD1	6.90	124.51	118.30
1	A	155	ALA	N-CA-CB	6.85	119.69	110.10
1	A	71	TYR	CB-CG-CD2	6.53	124.92	121.00
1	A	126	ARG	NE-CZ-NH2	-6.40	117.10	120.30
1	A	89	ASP	CB-CG-OD2	6.34	124.01	118.30
1	A	139	ASP	CB-CG-OD2	-6.28	112.65	118.30
1	A	198	ASP	O-C-N	6.08	132.43	122.70
1	A	113	THR	CA-CB-CG2	6.05	120.87	112.40
1	A	243	ARG	NE-CZ-NH1	6.05	123.33	120.30
1	A	28	SER	N-CA-CB	-6.03	101.45	110.50
1	A	107	ARG	NE-CZ-NH1	5.92	123.26	120.30
1	A	21	ARG	NE-CZ-NH1	5.90	123.25	120.30
1	A	187	MET	CG-SD-CE	5.90	109.64	100.20

*Continued on next page...*



Continued from previous page...

Mol	Chain	Res	Type	Atoms	Z	Observed(°)	Ideal(°)
1	A	237	GLU	CG-CD-OE2	-5.89	106.51	118.30
1	A	50	CYS	CA-CB-SG	-5.84	103.50	114.00
1	A	234	ARG	CA-CB-CG	5.80	126.17	113.40
1	A	241	ASP	CB-CG-OD1	5.76	123.48	118.30
1	A	3	GLN	CG-CD-OE1	5.76	133.12	121.60
1	A	99	ARG	NE-CZ-NH2	5.75	123.18	120.30
1	A	31	GLY	CA-C-O	5.67	130.81	120.60
1	A	198	ASP	CB-CG-OD2	-5.51	113.34	118.30
1	A	258	ILE	CA-C-O	-5.42	108.71	120.10
1	A	13	ASP	CB-CG-OD1	5.42	123.18	118.30
1	A	124	ASP	CB-CG-OD1	5.41	123.17	118.30
1	A	40	ASP	CB-CG-OD2	-5.39	113.45	118.30
1	A	97	GLN	OE1-CD-NE2	-5.38	109.53	121.90
1	A	195	GLU	OE1-CD-OE2	5.36	129.73	123.30
1	A	149	PHE	N-CA-CB	-5.33	101.00	110.60
1	A	238	SER	O-C-N	5.26	131.11	122.70
1	A	74	GLU	CG-CD-OE1	5.25	128.80	118.30
1	A	207	HIS	N-CA-CB	-5.20	101.24	110.60
1	A	192	CYS	CA-CB-SG	-5.16	104.71	114.00
1	A	161	CYS	O-C-N	5.14	130.93	122.70
1	A	217	HIS	CA-CB-CG	-5.01	105.08	113.60
1	A	49	ARG	NE-CZ-NH2	-5.00	117.80	120.30

There are no chirality outliers.

There are no planarity outliers.

## 5.2 Too-close contacts

In the following table, the Non-H and H(model) columns list the number of non-hydrogen atoms and hydrogen atoms in the chain respectively. The H(added) column lists the number of hydrogen atoms added and optimized by MolProbity. The Clashes column lists the number of clashes within the asymmetric unit, whereas Symm-Clashes lists symmetry-related clashes.

Mol	Chain	Non-H	H(model)	H(added)	Clashes	Symm-Clashes
1	A	2153	0	2080	32	0
2	A	5	0	0	1	0
3	A	21	0	10	4	0
4	A	33	0	21	2	0
5	A	110	0	0	4	2
All	All	2322	0	2111	34	2

The all-atom clashscore is defined as the number of clashes found per 1000 atoms (including hydrogen atoms). The all-atom clashscore for this structure is 8.

All (34) close contacts within the same asymmetric unit are listed below, sorted by their clash magnitude.

Atom-1	Atom-2	Interatomic distance (Å)	Clash overlap (Å)
1:A:146:CYS:SG	3:A:265:UFP:C6	2.17	1.33
1:A:146:CYS:SG	3:A:265:UFP:H6	1.71	1.25
1:A:215:GLN:HE21	1:A:215:GLN:H	1.03	0.97
1:A:215:GLN:H	1:A:215:GLN:NE2	1.83	0.77
1:A:190:GLN:NE2	1:A:242:TYR:OH	2.20	0.75
1:A:215:GLN:HE21	1:A:215:GLN:N	1.85	0.68
4:A:266:C2F:OE2	5:A:270:HOH:O	2.13	0.65
1:A:73:HIS:HE1	1:A:81:ASP:OD1	1.83	0.62
1:A:52:LEU:HD22	1:A:249:ILE:HD13	1.82	0.61
1:A:73:HIS:CE1	1:A:81:ASP:OD1	2.55	0.59
1:A:231:ILE:HB	1:A:248:GLU:HB3	1.86	0.56
1:A:186:HIS:CE1	5:A:282:HOH:O	2.59	0.56
1:A:10:LYS:NZ	1:A:32:HIS:HD2	2.05	0.55
1:A:37:ASN:HD21	1:A:39:GLN:HG3	1.72	0.54
1:A:37:ASN:ND2	1:A:39:GLN:H	2.07	0.52
1:A:186:HIS:HE1	5:A:282:HOH:O	1.91	0.52
1:A:37:ASN:HD22	1:A:39:GLN:H	1.59	0.50
1:A:10:LYS:HE2	1:A:29:ILE:HD13	1.93	0.50
1:A:103:THR:HB	1:A:104:PRO:HD2	1.94	0.50
1:A:192:CYS:O	1:A:193:ASP:HB2	2.12	0.49
1:A:82:GLU:HG2	1:A:264:ILE:CD1	2.45	0.46
1:A:82:GLU:HG2	1:A:264:ILE:HD13	1.96	0.46
1:A:248:GLU:HG3	5:A:374:HOH:O	2.16	0.45
1:A:146:CYS:SG	3:A:265:UFP:C5	3.04	0.44
1:A:37:ASN:HD22	1:A:38:LEU:N	2.16	0.43
1:A:10:LYS:HZ2	1:A:32:HIS:HD2	1.65	0.43
1:A:168:CYS:SG	1:A:174:LEU:HB2	2.59	0.43
1:A:257:GLY:N	2:A:267:PO4:O4	2.33	0.42
1:A:103:THR:HB	1:A:104:PRO:CD	2.50	0.41
1:A:139:ASP:N	1:A:139:ASP:OD1	2.52	0.41
4:A:266:C2F:H92	4:A:266:C2F:H14	1.85	0.41
1:A:183:LEU:HD12	1:A:183:LEU:HA	1.97	0.41
1:A:147:HIS:HD2	3:A:265:UFP:O4	2.04	0.40
1:A:115:VAL:HA	1:A:118:GLN:HE21	1.87	0.40

All (2) symmetry-related close contacts are listed below. The label for Atom-2 includes the symmetry operator and encoded unit-cell translations to be applied.

Atom-1	Atom-2	Interatomic distance (Å)	Clash overlap (Å)
5:A:296:HOH:O	5:A:296:HOH:O[5_555]	0.51	1.69
5:A:296:HOH:O	5:A:341:HOH:O[5_555]	2.11	0.09

### 5.3 Torsion angles [i](#)

#### 5.3.1 Protein backbone [i](#)

In the following table, the Percentiles column shows the percent Ramachandran outliers of the chain as a percentile score with respect to all X-ray entries followed by that with respect to entries of similar resolution.

The Analysed column shows the number of residues for which the backbone conformation was analysed, and the total number of residues.

Mol	Chain	Analysed	Favoured	Allowed	Outliers	Percentiles
1	A	262/264 (99%)	253 (97%)	7 (3%)	2 (1%)	19 19

All (2) Ramachandran outliers are listed below:

Mol	Chain	Res	Type
1	A	94	TYR
1	A	93	VAL

#### 5.3.2 Protein sidechains [i](#)

In the following table, the Percentiles column shows the percent sidechain outliers of the chain as a percentile score with respect to all X-ray entries followed by that with respect to entries of similar resolution.

The Analysed column shows the number of residues for which the sidechain conformation was analysed, and the total number of residues.

Mol	Chain	Analysed	Rotameric	Outliers	Percentiles
1	A	232/232 (100%)	222 (96%)	10 (4%)	29 36

All (10) residues with a non-rotameric sidechain are listed below:

Mol	Chain	Res	Type
1	A	17	GLN
1	A	18	LYS
1	A	20	ASP

*Continued on next page...*

*Continued from previous page...*

Mol	Chain	Res	Type
1	A	37	ASN
1	A	52	LEU
1	A	134	ASN
1	A	215	GLN
1	A	234	ARG
1	A	243	ARG
1	A	249	ILE

Sometimes sidechains can be flipped to improve hydrogen bonding and reduce clashes. All (12) such sidechains are listed below:

Mol	Chain	Res	Type
1	A	32	HIS
1	A	37	ASN
1	A	73	HIS
1	A	97	GLN
1	A	117	ASN
1	A	118	GLN
1	A	134	ASN
1	A	151	GLN
1	A	186	HIS
1	A	190	GLN
1	A	215	GLN
1	A	217	HIS

### 5.3.3 RNA [i](#)

There are no RNA molecules in this entry.

## 5.4 Non-standard residues in protein, DNA, RNA chains [i](#)

1 non-standard protein/DNA/RNA residue is modelled in this entry.

In the following table, the Counts columns list the number of bonds (or angles) for which Mogul statistics could be retrieved, the number of bonds (or angles) that are observed in the model and the number of bonds (or angles) that are defined in the Chemical Component Dictionary. The Link column lists molecule types, if any, to which the group is linked. The Z score for a bond length (or angle) is the number of standard deviations the observed value is removed from the expected value. A bond length (or angle) with  $|Z| > 2$  is considered an outlier worth inspection. RMSZ is the root-mean-square of all Z scores of the bond lengths (or angles).

Mol	Type	Chain	Res	Link	Bond lengths			Bond angles		
					Counts	RMSZ	# Z  > 2	Counts	RMSZ	# Z  > 2
1	CXM	A	1	1	8,10,11	1.18	0	7,11,13	2.32	3 (42%)

In the following table, the Chirals column lists the number of chiral outliers, the number of chiral centers analysed, the number of these observed in the model and the number defined in the Chemical Component Dictionary. Similar counts are reported in the Torsion and Rings columns. '-' means no outliers of that kind were identified.

Mol	Type	Chain	Res	Link	Chirals	Torsions	Rings
1	CXM	A	1	1	-	0/9/10/12	-

There are no bond length outliers.

All (3) bond angle outliers are listed below:

Mol	Chain	Res	Type	Atoms	Z	Observed(°)	Ideal(°)
1	A	1	CXM	ON1-CN-N	-4.25	117.88	124.85
1	A	1	CXM	O-C-CA	-2.67	117.77	124.78
1	A	1	CXM	C-CA-N	-2.56	105.12	109.73

There are no chirality outliers.

There are no torsion outliers.

There are no ring outliers.

No monomer is involved in short contacts.

## 5.5 Carbohydrates [i](#)

There are no monosaccharides in this entry.

## 5.6 Ligand geometry [i](#)

3 ligands are modelled in this entry.

In the following table, the Counts columns list the number of bonds (or angles) for which Mogul statistics could be retrieved, the number of bonds (or angles) that are observed in the model and the number of bonds (or angles) that are defined in the Chemical Component Dictionary. The Link column lists molecule types, if any, to which the group is linked. The Z score for a bond length (or angle) is the number of standard deviations the observed value is removed from the expected value. A bond length (or angle) with  $|Z| > 2$  is considered an outlier worth inspection. RMSZ is the root-mean-square of all Z scores of the bond lengths (or angles).

Mol	Type	Chain	Res	Link	Bond lengths			Bond angles		
					Counts	RMSZ	# Z  > 2	Counts	RMSZ	# Z  > 2
2	PO4	A	267	-	4,4,4	2.54	2 (50%)	6,6,6	3.17	4 (66%)
4	C2F	A	266	3	33,35,35	2.48	11 (33%)	35,49,49	3.10	16 (45%)
3	UFP	A	265	4	22,22,22	5.80	5 (22%)	33,33,33	4.22	10 (30%)

In the following table, the Chirals column lists the number of chiral outliers, the number of chiral centers analysed, the number of these observed in the model and the number defined in the Chemical Component Dictionary. Similar counts are reported in the Torsion and Rings columns. '-' means no outliers of that kind were identified.

Mol	Type	Chain	Res	Link	Chirals	Torsions	Rings
4	C2F	A	266	3	-	6/22/35/35	0/3/3/3
3	UFP	A	265	4	-	1/10/22/22	0/2/2/2

All (18) bond length outliers are listed below:

Mol	Chain	Res	Type	Atoms	Z	Observed(Å)	Ideal(Å)
3	A	265	UFP	C6-C5	18.70	1.61	1.33
3	A	265	UFP	C4-C5	16.71	1.64	1.44
3	A	265	UFP	C6-N1	9.35	1.54	1.38
4	A	266	C2F	C4A-C4	7.41	1.51	1.41
4	A	266	C2F	C4-N3	6.68	1.44	1.33
2	A	267	PO4	P-O1	4.40	1.61	1.50
4	A	266	C2F	C9-N10	3.37	1.52	1.45
4	A	266	C2F	CG-CD	3.20	1.58	1.50
4	A	266	C2F	C8A-N1	3.13	1.40	1.34
4	A	266	C2F	C-N	3.13	1.41	1.34
3	A	265	UFP	O4'-C1'	2.65	1.48	1.42
4	A	266	C2F	C2-NA2	2.54	1.39	1.33
4	A	266	C2F	C15-N10	2.52	1.46	1.38
2	A	267	PO4	P-O2	-2.44	1.47	1.54
4	A	266	C2F	C2-N3	2.44	1.39	1.35
4	A	266	C2F	C17-C12	2.26	1.43	1.39
4	A	266	C2F	C16-C15	2.20	1.42	1.39
3	A	265	UFP	P-O2P	-2.18	1.46	1.54

All (30) bond angle outliers are listed below:

Mol	Chain	Res	Type	Atoms	Z	Observed(°)	Ideal(°)
3	A	265	UFP	C6-C5-C4	-18.62	105.25	122.60
4	A	266	C2F	CG-CB-CA	10.23	132.28	113.16
4	A	266	C2F	C8A-C4A-C4	8.22	120.87	114.44

*Continued on next page...*

Continued from previous page...

Mol	Chain	Res	Type	Atoms	Z	Observed(°)	Ideal(°)
3	A	265	UFP	O4-C4-C5	-7.82	118.67	125.72
4	A	266	C2F	C11-N5-C4A	5.67	121.01	113.30
2	A	267	PO4	O3-P-O2	5.46	125.51	107.97
3	A	265	UFP	F5-C5-C6	-5.42	116.12	120.97
3	A	265	UFP	C5-C4-N3	5.29	117.77	112.56
3	A	265	UFP	C5-C6-N1	-5.11	114.53	120.62
3	A	265	UFP	O3P-P-O5'	-4.55	94.63	106.73
4	A	266	C2F	CA-N-C	-4.49	110.61	121.60
3	A	265	UFP	N3-C2-N1	4.25	120.53	114.89
2	A	267	PO4	O4-P-O3	-3.73	96.01	107.97
4	A	266	C2F	C4A-C4-N3	-3.72	115.49	123.14
3	A	265	UFP	C1'-N1-C6	-3.51	114.73	120.77
3	A	265	UFP	C1'-N1-C2	3.38	124.29	117.64
4	A	266	C2F	C6-C9-N10	-3.30	103.64	112.23
3	A	265	UFP	O2-C2-N3	-3.27	115.40	121.50
4	A	266	C2F	O1-CT-CA	-2.97	112.49	122.26
4	A	266	C2F	NA2-C2-N1	2.96	121.86	117.25
4	A	266	C2F	C2-N1-C8A	2.94	121.13	114.54
4	A	266	C2F	C2-N3-C4	2.93	120.59	115.93
4	A	266	C2F	O2-CT-O1	2.80	130.44	124.09
2	A	267	PO4	O4-P-O2	2.72	116.69	107.97
4	A	266	C2F	OE1-CD-CG	-2.68	114.46	123.08
2	A	267	PO4	O3-P-O1	-2.50	101.74	110.89
4	A	266	C2F	CB-CA-N	-2.44	105.95	110.88
4	A	266	C2F	N1-C2-N3	-2.10	122.12	125.42
4	A	266	C2F	OE2-CD-OE1	2.04	128.39	123.30
4	A	266	C2F	CB-CA-CT	2.02	115.21	110.35

There are no chirality outliers.

All (7) torsion outliers are listed below:

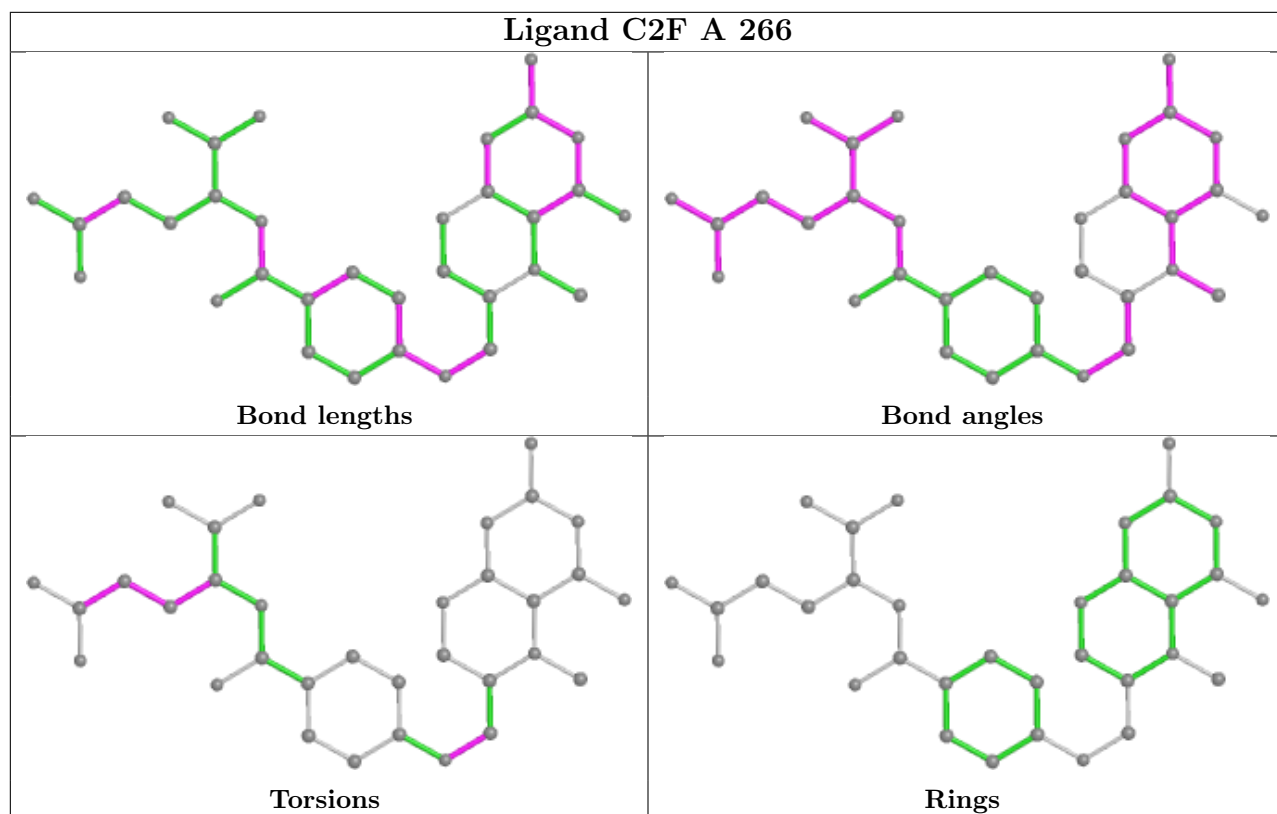
Mol	Chain	Res	Type	Atoms
4	A	266	C2F	N-CA-CB-CG
4	A	266	C2F	CT-CA-CB-CG
4	A	266	C2F	CA-CB-CG-CD
4	A	266	C2F	C6-C9-N10-C15
4	A	266	C2F	OE2-CD-CG-CB
3	A	265	UFP	O4'-C4'-C5'-O5'
4	A	266	C2F	OE1-CD-CG-CB

There are no ring outliers.

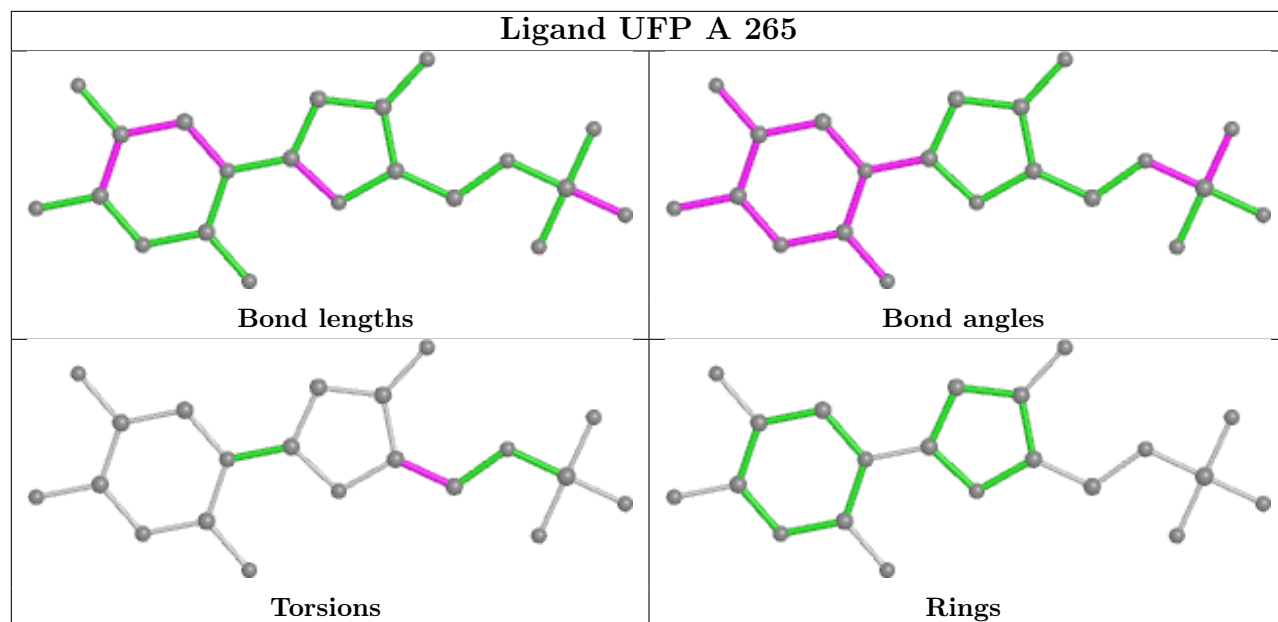
3 monomers are involved in 7 short contacts:

Mol	Chain	Res	Type	Clashes	Symm-Clashes
2	A	267	PO4	1	0
4	A	266	C2F	2	0
3	A	265	UFP	4	0

The following is a two-dimensional graphical depiction of Mogul quality analysis of bond lengths, bond angles, torsion angles, and ring geometry for all instances of the Ligand of Interest. In addition, ligands with molecular weight > 250 and outliers as shown on the validation Tables will also be included. For torsion angles, if less than 5% of the Mogul distribution of torsion angles is within 10 degrees of the torsion angle in question, then that torsion angle is considered an outlier. Any bond that is central to one or more torsion angles identified as an outlier by Mogul will be highlighted in the graph. For rings, the root-mean-square deviation (RMSD) between the ring in question and similar rings identified by Mogul is calculated over all ring torsion angles. If the average RMSD is greater than 60 degrees and the minimal RMSD between the ring in question and any Mogul-identified rings is also greater than 60 degrees, then that ring is considered an outlier. The outliers are highlighted in purple. The color gray indicates Mogul did not find sufficient equivalents in the CSD to analyse the geometry.







## 5.7 Other polymers [i](#)

There are no such residues in this entry.

## 5.8 Polymer linkage issues [i](#)

There are no chain breaks in this entry.

## 6 Fit of model and data [i](#)

### 6.1 Protein, DNA and RNA chains [i](#)

In the following table, the column labelled ‘#RSRZ> 2’ contains the number (and percentage) of RSRZ outliers, followed by percent RSRZ outliers for the chain as percentile scores relative to all X-ray entries and entries of similar resolution. The OWAB column contains the minimum, median, 95<sup>th</sup> percentile and maximum values of the occupancy-weighted average B-factor per residue. The column labelled ‘Q< 0.9’ lists the number of (and percentage) of residues with an average occupancy less than 0.9.

Mol	Chain	Analysed	<RSRZ>	#RSRZ>2	OWAB(Å <sup>2</sup> )	Q<0.9
1	A	263/264 (99%)	-0.72	0 <b>100</b> <b>100</b>	9, 18, 33, 48	0

There are no RSRZ outliers to report.

### 6.2 Non-standard residues in protein, DNA, RNA chains [i](#)

In the following table, the Atoms column lists the number of modelled atoms in the group and the number defined in the chemical component dictionary. The B-factors column lists the minimum, median, 95<sup>th</sup> percentile and maximum values of B factors of atoms in the group. The column labelled ‘Q< 0.9’ lists the number of atoms with occupancy less than 0.9.

Mol	Type	Chain	Res	Atoms	RSCC	RSR	B-factors(Å <sup>2</sup> )	Q<0.9
1	CXM	A	1	11/12	0.98	0.08	18,19,21,22	0

### 6.3 Carbohydrates [i](#)

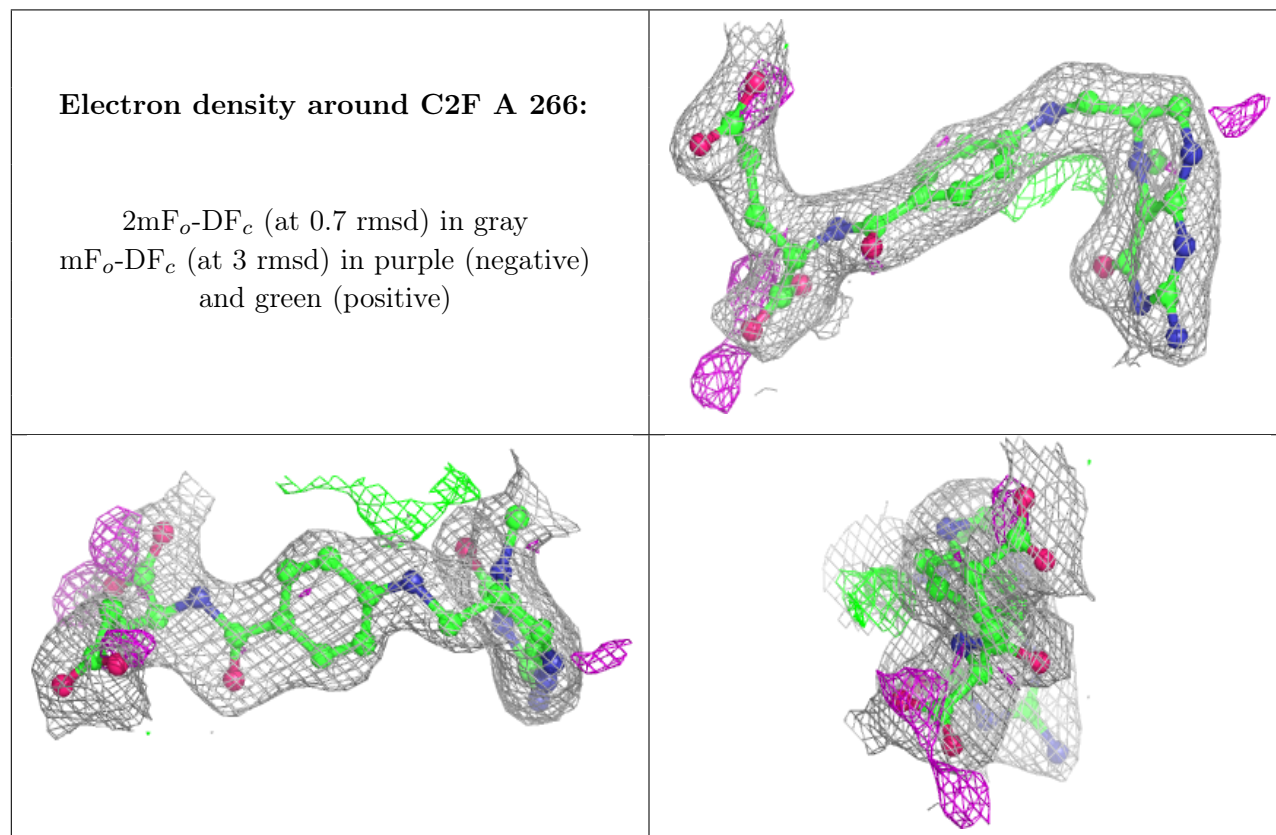
There are no monosaccharides in this entry.

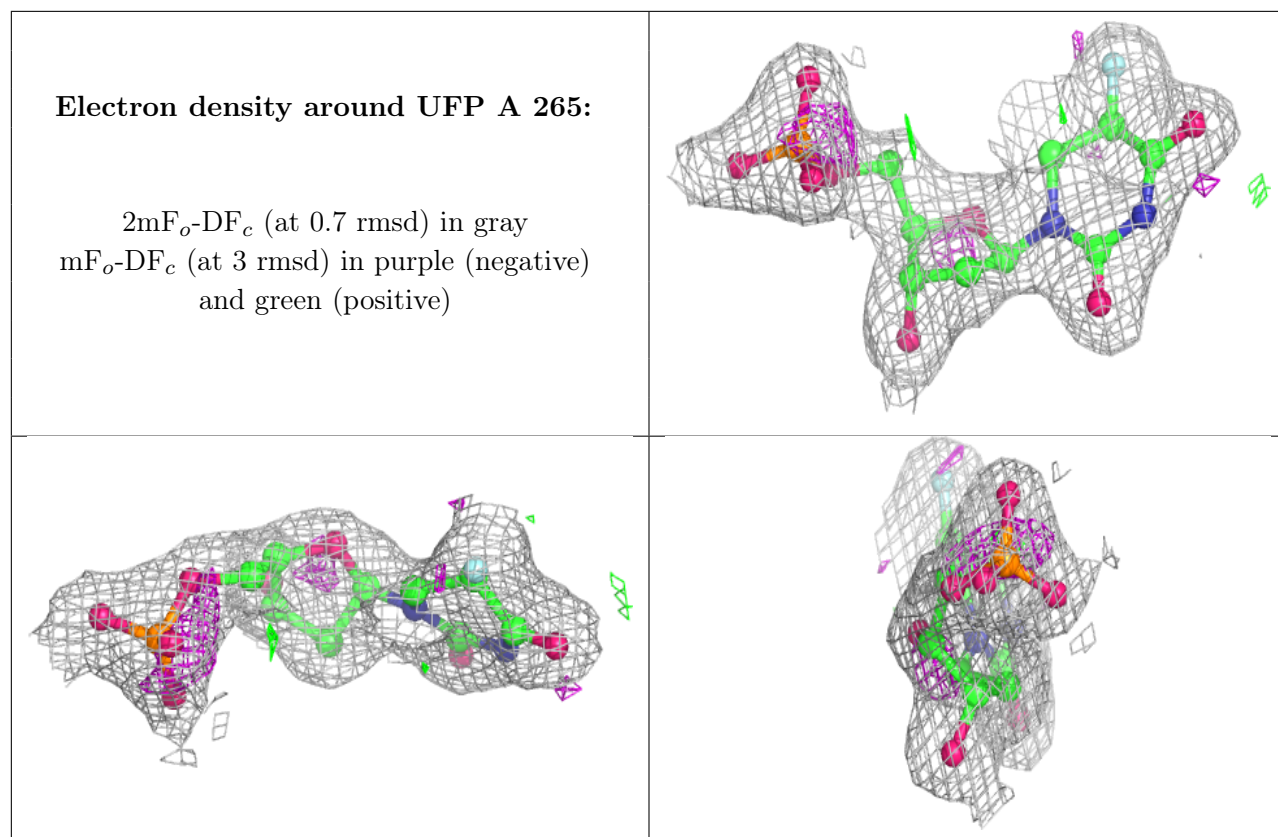
### 6.4 Ligands [i](#)

In the following table, the Atoms column lists the number of modelled atoms in the group and the number defined in the chemical component dictionary. The B-factors column lists the minimum, median, 95<sup>th</sup> percentile and maximum values of B factors of atoms in the group. The column labelled ‘Q< 0.9’ lists the number of atoms with occupancy less than 0.9.

Mol	Type	Chain	Res	Atoms	RSCC	RSR	B-factors(Å <sup>2</sup> )	Q<0.9
4	C2F	A	266	33/33	0.91	0.14	17,24,37,41	0
2	PO4	A	267	5/5	0.92	0.13	43,44,47,48	0
3	UFP	A	265	21/21	0.97	0.09	13,15,19,19	0

The following is a graphical depiction of the model fit to experimental electron density of all instances of the Ligand of Interest. In addition, ligands with molecular weight > 250 and outliers as shown on the geometry validation Tables will also be included. Each fit is shown from different orientation to approximate a three-dimensional view.





## 6.5 Other polymers [i](#)

There are no such residues in this entry.