



Full wwPDB X-ray Structure Validation Report ⓘ

Dec 7, 2023 – 11:37 pm GMT

PDB ID : 2C3E
Title : The bovine mitochondrial ADP-ATP carrier
Authors : Nury, H.; Dahout-Gonzalez, C.; Trezeguet, V.; Lauquin, G.; Brandolin, G.;
Pebay-Peyroula, E.
Deposited on : 2005-10-06
Resolution : 2.80 Å(reported)

This is a Full wwPDB X-ray Structure Validation Report for a publicly released PDB entry.

We welcome your comments at validation@mail.wwpdb.org

A user guide is available at

<https://www.wwpdb.org/validation/2017/XrayValidationReportHelp>

with specific help available everywhere you see the ⓘ symbol.

The types of validation reports are described at

<http://www.wwpdb.org/validation/2017/FAQs#types>.

The following versions of software and data (see [references ⓘ](#)) were used in the production of this report:

MolProbity : 4.02b-467
Mogul : 1.8.4, CSD as541be (2020)
Xtriage (Phenix) : 1.13
EDS : 2.36
buster-report : 1.1.7 (2018)
Percentile statistics : 20191225.v01 (using entries in the PDB archive December 25th 2019)
Refmac : 5.8.0158
CCP4 : 7.0.044 (Gargrove)
Ideal geometry (proteins) : Engh & Huber (2001)
Ideal geometry (DNA, RNA) : Parkinson et al. (1996)
Validation Pipeline (wwPDB-VP) : 2.36

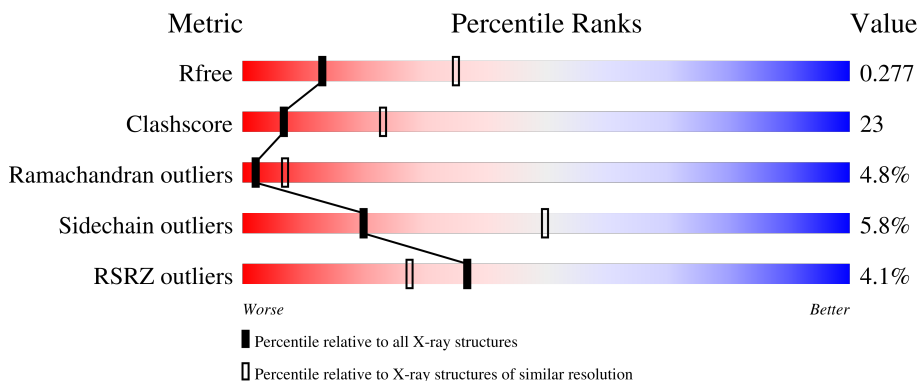
1 Overall quality at a glance i

The following experimental techniques were used to determine the structure:

X-RAY DIFFRACTION

The reported resolution of this entry is 2.80 Å.

Percentile scores (ranging between 0-100) for global validation metrics of the entry are shown in the following graphic. The table shows the number of entries on which the scores are based.



Metric	Whole archive (#Entries)	Similar resolution (#Entries, resolution range(Å))
R_{free}	130704	3140 (2.80-2.80)
Clashscore	141614	3569 (2.80-2.80)
Ramachandran outliers	138981	3498 (2.80-2.80)
Sidechain outliers	138945	3500 (2.80-2.80)
RSRZ outliers	127900	3078 (2.80-2.80)

The table below summarises the geometric issues observed across the polymeric chains and their fit to the electron density. The red, orange, yellow and green segments of the lower bar indicate the fraction of residues that contain outliers for ≥ 3 , 2, 1 and 0 types of geometric quality criteria respectively. A grey segment represents the fraction of residues that are not modelled. The numeric value for each fraction is indicated below the corresponding segment, with a dot representing fractions $\leq 5\%$. The upper red bar (where present) indicates the fraction of residues that have poor fit to the electron density. The numeric value is given above the bar.

Mol	Chain	Length	Quality of chain
1	A	297	

The following table lists non-polymeric compounds, carbohydrate monomers and non-standard residues in protein, DNA, RNA chains that are outliers for geometric or electron-density-fit criteria:

Mol	Type	Chain	Res	Chirality	Geometry	Clashes	Electron density
2	CXT	A	401	X	-	-	-

2 Entry composition [i](#)

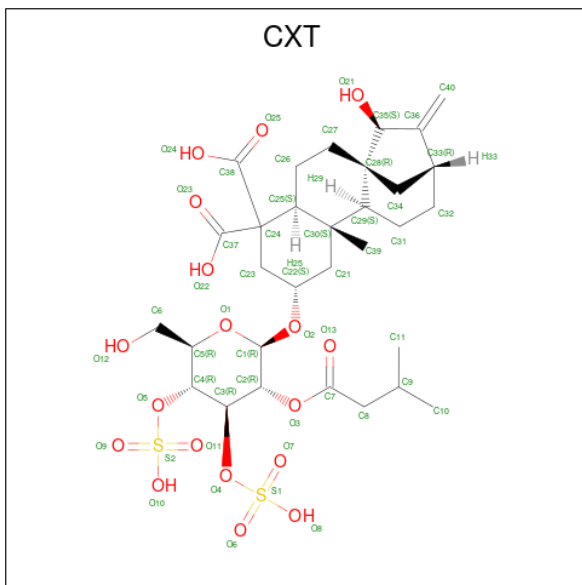
There are 3 unique types of molecules in this entry. The entry contains 2515 atoms, of which 0 are hydrogens and 0 are deuteriums.

In the tables below, the ZeroOcc column contains the number of atoms modelled with zero occupancy, the AltConf column contains the number of residues with at least one atom in alternate conformation and the Trace column contains the number of residues modelled with at most 2 atoms.

- Molecule 1 is a protein called ADP/ATP TRANSLOCASE 1.

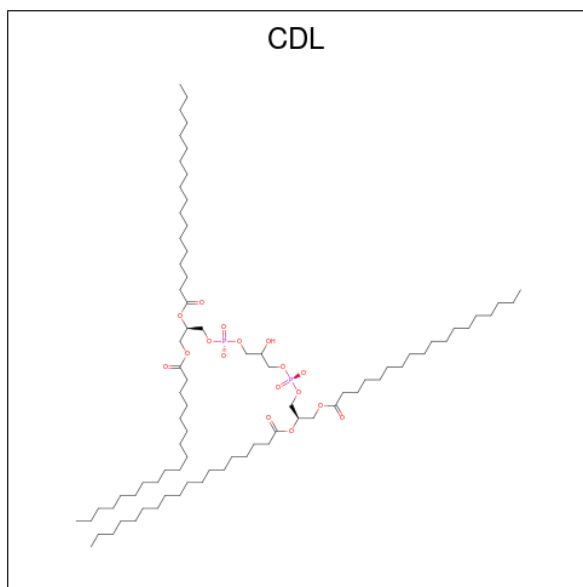
Mol	Chain	Residues	Atoms					ZeroOcc	AltConf	Trace
			Total	C	N	O	S			
1	A	293	2266	1467	394	394	11	0	0	0

- Molecule 2 is Carboxyatractyloside (three-letter code: CXT) (formula: $C_{31}H_{46}O_{18}S_2$).



Mol	Chain	Residues	Atoms				ZeroOcc	AltConf
			Total	C	O	S		
2	A	1	51	31	18	2	0	0

- Molecule 3 is CARDIOLIPIN (three-letter code: CDL) (formula: $C_{81}H_{156}O_{17}P_2$).

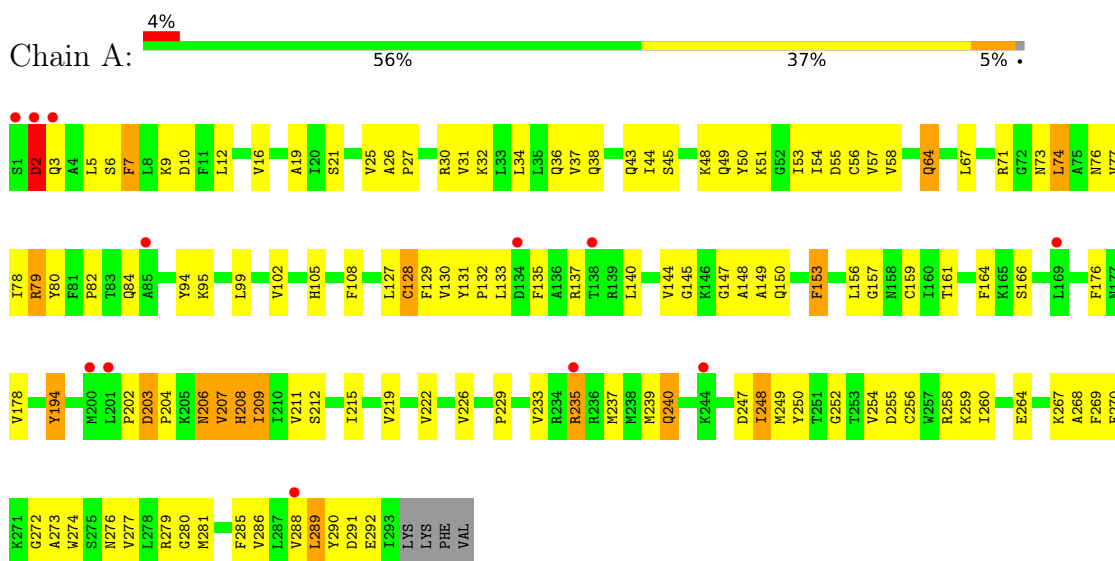


Mol	Chain	Residues	Atoms				ZeroOcc	AltConf
			Total	C	O	P		
3	A	1	62	45	15	2	0	0
3	A	1	55	36	17	2	0	0
3	A	1	81	62	17	2	0	0

3 Residue-property plots

These plots are drawn for all protein, RNA, DNA and oligosaccharide chains in the entry. The first graphic for a chain summarises the proportions of the various outlier classes displayed in the second graphic. The second graphic shows the sequence view annotated by issues in geometry and electron density. Residues are color-coded according to the number of geometric quality criteria for which they contain at least one outlier: green = 0, yellow = 1, orange = 2 and red = 3 or more. A red dot above a residue indicates a poor fit to the electron density ($RSRZ > 2$). Stretches of 2 or more consecutive residues without any outlier are shown as a green connector. Residues present in the sample, but not in the model, are shown in grey.

• Molecule 1: ADP/ATP TRANSLOCASE 1



4 Data and refinement statistics

Property	Value	Source
Space group	C 2 2 21	Depositor
Cell constants a, b, c, α , β , γ	76.25Å 110.75Å 89.54Å 90.00° 90.00° 90.00°	Depositor
Resolution (Å)	25.00 – 2.80 23.87 – 2.80	Depositor EDS
% Data completeness (in resolution range)	98.1 (25.00-2.80) 98.0 (23.87-2.80)	Depositor EDS
R_{merge}	0.11	Depositor
R_{sym}	(Not available)	Depositor
$\langle I/\sigma(I) \rangle$ ¹	3.39 (at 2.80Å)	Xtrriage
Refinement program	CNS 1.1	Depositor
R, R_{free}	0.250 , 0.281 0.241 , 0.277	Depositor DCC
R_{free} test set	460 reflections (4.87%)	wwPDB-VP
Wilson B-factor (Å ²)	76.7	Xtrriage
Anisotropy	0.745	Xtrriage
Bulk solvent k_{sol} (e/Å ³), B_{sol} (Å ²)	0.30 , 83.8	EDS
L-test for twinning ²	$\langle L \rangle = 0.50$, $\langle L^2 \rangle = 0.33$	Xtrriage
Estimated twinning fraction	No twinning to report.	Xtrriage
F_o, F_c correlation	0.93	EDS
Total number of atoms	2515	wwPDB-VP
Average B, all atoms (Å ²)	93.0	wwPDB-VP

Xtrriage's analysis on translational NCS is as follows: *The largest off-origin peak in the Patterson function is 5.62% of the height of the origin peak. No significant pseudotranslation is detected.*

¹Intensities estimated from amplitudes.

²Theoretical values of $\langle |L| \rangle$, $\langle L^2 \rangle$ for acentric reflections are 0.5, 0.333 respectively for untwinned datasets, and 0.375, 0.2 for perfectly twinned datasets.

5 Model quality [i](#)

5.1 Standard geometry [i](#)

Bond lengths and bond angles in the following residue types are not validated in this section: CDL, CXT

The Z score for a bond length (or angle) is the number of standard deviations the observed value is removed from the expected value. A bond length (or angle) with $|Z| > 5$ is considered an outlier worth inspection. RMSZ is the root-mean-square of all Z scores of the bond lengths (or angles).

Mol	Chain	Bond lengths		Bond angles	
		RMSZ	# Z >5	RMSZ	# Z >5
1	A	0.47	0/2318	0.65	0/3128

There are no bond length outliers.

There are no bond angle outliers.

There are no chirality outliers.

There are no planarity outliers.

5.2 Too-close contacts [i](#)

In the following table, the Non-H and H(model) columns list the number of non-hydrogen atoms and hydrogen atoms in the chain respectively. The H(added) column lists the number of hydrogen atoms added and optimized by MolProbity. The Clashes column lists the number of clashes within the asymmetric unit, whereas Symm-Clashes lists symmetry-related clashes.

Mol	Chain	Non-H	H(model)	H(added)	Clashes	Symm-Clashes
1	A	2266	0	2276	118	0
2	A	51	0	40	0	0
3	A	198	0	234	8	0
All	All	2515	0	2550	118	0

The all-atom clashscore is defined as the number of clashes found per 1000 atoms (including hydrogen atoms). The all-atom clashscore for this structure is 23.

All (118) close contacts within the same asymmetric unit are listed below, sorted by their clash magnitude.

Atom-1	Atom-2	Interatomic distance (Å)	Clash overlap (Å)
1:A:43:GLN:HE21	1:A:144:VAL:HG12	1.17	1.08

Continued on next page...

Continued from previous page...

Atom-1	Atom-2	Interatomic distance (Å)	Clash overlap (Å)
1:A:43:GLN:NE2	1:A:144:VAL:HG12	1.77	1.00
1:A:264:GLU:HB3	1:A:268:ALA:HB2	1.58	0.84
1:A:178:VAL:HG21	1:A:233:VAL:CG2	2.14	0.78
1:A:240:GLN:HE21	1:A:240:GLN:N	1.81	0.77
1:A:9:LYS:HD3	1:A:12:LEU:HD12	1.67	0.76
1:A:202:PRO:C	1:A:204:PRO:HD2	2.07	0.75
1:A:208:HIS:O	1:A:209:ILE:HG23	1.88	0.73
1:A:74:LEU:O	1:A:77:VAL:HG22	1.90	0.72
1:A:204:PRO:HG2	1:A:206:ASN:HB3	1.70	0.71
1:A:67:LEU:HD12	1:A:67:LEU:N	2.08	0.69
1:A:67:LEU:HD12	1:A:67:LEU:H	1.56	0.69
1:A:157:GLY:O	1:A:161:THR:HG23	1.93	0.68
1:A:204:PRO:C	1:A:206:ASN:H	1.96	0.68
1:A:44:ILE:HG22	1:A:49:GLN:HG2	1.75	0.68
1:A:38:GLN:HE22	1:A:50:TYR:H	1.41	0.67
1:A:176:PHE:HB3	3:A:802:CDL:HA32	1.76	0.67
1:A:273:ALA:O	1:A:277:VAL:HG23	1.93	0.67
1:A:30:ARG:HH22	1:A:64:GLN:HE22	1.43	0.66
1:A:264:GLU:HB3	1:A:268:ALA:CB	2.27	0.65
1:A:289:LEU:O	1:A:292:GLU:HG2	1.97	0.65
1:A:30:ARG:HH22	1:A:64:GLN:NE2	1.95	0.65
1:A:43:GLN:HE22	1:A:144:VAL:H	1.45	0.63
1:A:178:VAL:HG21	1:A:233:VAL:HG21	1.78	0.63
1:A:212:SER:O	1:A:215:ILE:HG22	1.99	0.63
1:A:31:VAL:HG21	1:A:57:VAL:HG12	1.80	0.62
1:A:51:LYS:HD3	1:A:55:ASP:OD2	2.00	0.62
1:A:250:TYR:HE2	1:A:259:LYS:HB2	1.65	0.61
1:A:6:SER:O	1:A:7:PHE:HB2	2.00	0.60
1:A:131:TYR:HB3	1:A:132:PRO:HD3	1.84	0.59
1:A:290:TYR:O	1:A:292:GLU:N	2.36	0.59
1:A:38:GLN:NE2	1:A:49:GLN:HA	2.19	0.58
1:A:285:PHE:O	1:A:289:LEU:HD13	2.04	0.57
1:A:233:VAL:O	1:A:237:MET:HG2	2.03	0.57
1:A:208:HIS:ND1	1:A:209:ILE:HG12	2.18	0.57
1:A:44:ILE:CG2	1:A:49:GLN:HG2	2.34	0.57
1:A:237:MET:SD	1:A:256:CYS:HB2	2.44	0.57
1:A:272:GLY:N	3:A:801:CDL:OB4	2.35	0.57
1:A:164:PHE:C	1:A:166:SER:H	2.08	0.56
1:A:203:ASP:N	1:A:204:PRO:CD	2.69	0.56
1:A:147:GLY:C	1:A:149:ALA:H	2.08	0.56
1:A:194:TYR:HD1	1:A:219:VAL:HG11	1.70	0.56

Continued on next page...

Continued from previous page...

Atom-1	Atom-2	Interatomic distance (Å)	Clash overlap (Å)
1:A:67:LEU:H	1:A:67:LEU:CD1	2.19	0.56
1:A:130:VAL:HB	1:A:133:LEU:HD12	1.89	0.55
1:A:202:PRO:C	1:A:204:PRO:CD	2.75	0.55
1:A:48:LYS:HB3	1:A:48:LYS:NZ	2.21	0.55
1:A:21:SER:O	1:A:25:VAL:HG22	2.06	0.54
1:A:12:LEU:O	1:A:16:VAL:HG23	2.08	0.54
1:A:215:ILE:O	1:A:219:VAL:HG23	2.09	0.53
1:A:285:PHE:O	1:A:288:VAL:HB	2.09	0.52
1:A:94:TYR:OH	3:A:802:CDL:H192	2.10	0.52
1:A:31:VAL:HG11	1:A:53:ILE:HG23	1.91	0.51
1:A:50:TYR:CD2	1:A:56:CYS:HA	2.45	0.51
1:A:250:TYR:CE2	1:A:259:LYS:HB2	2.44	0.51
1:A:32:LYS:HG3	1:A:276:ASN:HB2	1.93	0.51
1:A:53:ILE:HG13	3:A:801:CDL:HB22	1.93	0.51
1:A:147:GLY:O	1:A:149:ALA:N	2.44	0.51
1:A:26:ALA:N	1:A:27:PRO:CD	2.74	0.50
1:A:127:LEU:O	1:A:129:PHE:N	2.45	0.50
1:A:252:GLY:H	1:A:255:ASP:HB3	1.77	0.49
1:A:204:PRO:C	1:A:206:ASN:N	2.65	0.49
1:A:258:ARG:HH11	1:A:258:ARG:HG2	1.78	0.49
1:A:2:ASP:O	1:A:3:GLN:HG3	2.13	0.49
1:A:37:VAL:HG11	1:A:235:ARG:HB3	1.95	0.48
1:A:222:VAL:O	1:A:226:VAL:HG23	2.13	0.48
1:A:54:ILE:O	1:A:58:VAL:HB	2.13	0.48
1:A:289:LEU:H	1:A:289:LEU:CD1	2.26	0.48
1:A:255:ASP:O	1:A:259:LYS:HD3	2.13	0.48
1:A:145:GLY:HA3	1:A:150:GLN:O	2.13	0.47
1:A:153:PHE:CD2	1:A:159:CYS:HA	2.48	0.47
1:A:164:PHE:C	1:A:166:SER:N	2.67	0.47
1:A:239:MET:C	1:A:240:GLN:HE21	2.16	0.47
1:A:64:GLN:HG2	1:A:145:GLY:O	2.14	0.47
1:A:254:VAL:O	1:A:258:ARG:HB2	2.14	0.47
1:A:43:GLN:HE22	1:A:144:VAL:N	2.13	0.47
1:A:38:GLN:HE22	1:A:49:GLN:HA	1.78	0.47
1:A:264:GLU:OE1	1:A:268:ALA:HB1	2.15	0.47
1:A:267:LYS:O	1:A:268:ALA:C	2.52	0.46
1:A:247:ASP:O	1:A:249:MET:N	2.48	0.46
1:A:74:LEU:HD12	3:A:800:CDL:HA21	1.98	0.46
1:A:44:ILE:HG22	1:A:45:SER:O	2.16	0.46
1:A:250:TYR:HE2	1:A:259:LYS:CB	2.26	0.46
1:A:21:SER:HA	1:A:286:VAL:HG11	1.99	0.45

Continued on next page...

Continued from previous page...

Atom-1	Atom-2	Interatomic distance (Å)	Clash overlap (Å)
1:A:74:LEU:HD13	1:A:156:LEU:HD23	1.98	0.45
1:A:32:LYS:HD3	1:A:32:LYS:C	2.38	0.44
1:A:267:LYS:C	1:A:269:PHE:N	2.70	0.44
1:A:67:LEU:N	1:A:67:LEU:CD1	2.76	0.44
1:A:132:PRO:O	1:A:135:PHE:HB3	2.19	0.43
1:A:147:GLY:C	1:A:149:ALA:N	2.70	0.43
1:A:78:ILE:O	1:A:82:PRO:HD2	2.18	0.43
1:A:71:ARG:HG2	1:A:140:LEU:O	2.19	0.43
1:A:240:GLN:HE21	1:A:240:GLN:CA	2.32	0.43
1:A:247:ASP:O	1:A:248:ILE:C	2.57	0.43
1:A:108:PHE:C	1:A:108:PHE:CD2	2.92	0.42
1:A:19:ALA:HB1	3:A:800:CDL:H751	2.01	0.42
1:A:208:HIS:HB3	1:A:211:VAL:HG23	2.01	0.42
1:A:80:TYR:CZ	1:A:84:GLN:HG3	2.53	0.42
1:A:240:GLN:CA	1:A:240:GLN:NE2	2.82	0.42
1:A:229:PRO:HG3	1:A:270:PHE:CE1	2.55	0.42
1:A:73:ASN:O	1:A:76:ASN:N	2.52	0.42
1:A:289:LEU:CD1	1:A:289:LEU:N	2.82	0.42
1:A:285:PHE:CZ	1:A:289:LEU:HD11	2.54	0.42
1:A:130:VAL:O	1:A:131:TYR:C	2.58	0.41
1:A:240:GLN:N	1:A:240:GLN:NE2	2.59	0.41
1:A:277:VAL:O	1:A:281:MET:HG3	2.20	0.41
1:A:16:VAL:HA	3:A:800:CDL:H792	2.02	0.41
1:A:43:GLN:HE21	1:A:43:GLN:HB2	1.61	0.41
1:A:38:GLN:HE22	1:A:50:TYR:N	2.13	0.41
1:A:95:LYS:O	1:A:99:LEU:HB2	2.20	0.41
1:A:247:ASP:O	1:A:249:MET:HG3	2.21	0.41
1:A:274:TRP:HB2	3:A:801:CDL:HB61	2.02	0.41
1:A:267:LYS:HB2	1:A:267:LYS:HE2	1.92	0.41
1:A:207:VAL:O	1:A:208:HIS:C	2.59	0.40
1:A:32:LYS:O	1:A:36:GLN:HB2	2.21	0.40
1:A:79:ARG:HD2	1:A:130:VAL:HG21	2.04	0.40
1:A:127:LEU:O	1:A:128:CYS:C	2.59	0.40
1:A:127:LEU:HD22	1:A:131:TYR:HD1	1.86	0.40
1:A:279:ARG:NH1	1:A:280:GLY:HA2	2.36	0.40

There are no symmetry-related clashes.

5.3 Torsion angles [i](#)

5.3.1 Protein backbone [i](#)

In the following table, the Percentiles column shows the percent Ramachandran outliers of the chain as a percentile score with respect to all X-ray entries followed by that with respect to entries of similar resolution.

The Analysed column shows the number of residues for which the backbone conformation was analysed, and the total number of residues.

Mol	Chain	Analysed	Favoured	Allowed	Outliers	Percentiles
1	A	291/297 (98%)	247 (85%)	30 (10%)	14 (5%)	2 7

All (14) Ramachandran outliers are listed below:

Mol	Chain	Res	Type
1	A	2	ASP
1	A	7	PHE
1	A	207	VAL
1	A	209	ILE
1	A	248	ILE
1	A	291	ASP
1	A	79	ARG
1	A	128	CYS
1	A	148	ALA
1	A	260	ILE
1	A	206	ASN
1	A	203	ASP
1	A	5	LEU
1	A	208	HIS

5.3.2 Protein sidechains [i](#)

In the following table, the Percentiles column shows the percent sidechain outliers of the chain as a percentile score with respect to all X-ray entries followed by that with respect to entries of similar resolution.

The Analysed column shows the number of residues for which the sidechain conformation was analysed, and the total number of residues.

Mol	Chain	Analysed	Rotameric	Outliers	Percentiles
1	A	225/234 (96%)	212 (94%)	13 (6%)	20 50

All (13) residues with a non-rotameric sidechain are listed below:

Mol	Chain	Res	Type
1	A	2	ASP
1	A	10	ASP
1	A	34	LEU
1	A	64	GLN
1	A	74	LEU
1	A	102	VAL
1	A	105	HIS
1	A	137	ARG
1	A	153	PHE
1	A	194	TYR
1	A	235	ARG
1	A	240	GLN
1	A	289	LEU

Sometimes sidechains can be flipped to improve hydrogen bonding and reduce clashes. All (10) such sidechains are listed below:

Mol	Chain	Res	Type
1	A	3	GLN
1	A	36	GLN
1	A	38	GLN
1	A	39	HIS
1	A	43	GLN
1	A	64	GLN
1	A	73	ASN
1	A	96	GLN
1	A	158	ASN
1	A	240	GLN

5.3.3 RNA [i](#)

There are no RNA molecules in this entry.

5.4 Non-standard residues in protein, DNA, RNA chains [i](#)

There are no non-standard protein/DNA/RNA residues in this entry.

5.5 Carbohydrates [i](#)

There are no monosaccharides in this entry.

5.6 Ligand geometry

4 ligands are modelled in this entry.

In the following table, the Counts columns list the number of bonds (or angles) for which Mogul statistics could be retrieved, the number of bonds (or angles) that are observed in the model and the number of bonds (or angles) that are defined in the Chemical Component Dictionary. The Link column lists molecule types, if any, to which the group is linked. The Z score for a bond length (or angle) is the number of standard deviations the observed value is removed from the expected value. A bond length (or angle) with $|Z| > 2$ is considered an outlier worth inspection. RMSZ is the root-mean-square of all Z scores of the bond lengths (or angles).

Mol	Type	Chain	Res	Link	Bond lengths			Bond angles		
					Counts	RMSZ	# Z > 2	Counts	RMSZ	# Z > 2
3	CDL	A	801	-	54,54,99	0.80	2 (3%)	60,66,111	1.14	6 (10%)
3	CDL	A	800	-	61,61,99	0.70	1 (1%)	66,72,111	1.02	5 (7%)
2	CXT	A	401	-	55,55,55	3.04	22 (40%)	74,89,89	2.89	26 (35%)
3	CDL	A	802	-	80,80,99	0.70	3 (3%)	86,92,111	0.88	5 (5%)

In the following table, the Chirals column lists the number of chiral outliers, the number of chiral centers analysed, the number of these observed in the model and the number defined in the Chemical Component Dictionary. Similar counts are reported in the Torsion and Rings columns. '-' means no outliers of that kind were identified.

Mol	Type	Chain	Res	Link	Chirals	Torsions	Rings
3	CDL	A	801	-	-	28/65/65/110	-
3	CDL	A	800	-	-	33/70/70/110	-
2	CXT	A	401	-	1/1/20/20	11/36/120/120	0/6/5/5
3	CDL	A	802	-	-	42/91/91/110	-

All (28) bond length outliers are listed below:

Mol	Chain	Res	Type	Atoms	Z	Observed(Å)	Ideal(Å)
2	A	401	CXT	C30-C25	8.51	1.70	1.56
2	A	401	CXT	C40-C36	6.98	1.45	1.32
2	A	401	CXT	O3-C7	6.82	1.53	1.34
2	A	401	CXT	C31-C29	6.75	1.64	1.53
2	A	401	CXT	C28-C29	6.59	1.68	1.55
2	A	401	CXT	C24-C25	5.63	1.69	1.57
2	A	401	CXT	O21-C35	-5.38	1.32	1.42
2	A	401	CXT	C26-C25	4.71	1.61	1.53
2	A	401	CXT	C39-C30	4.67	1.62	1.54
2	A	401	CXT	C24-C38	4.23	1.62	1.53

Continued on next page...

Continued from previous page...

Mol	Chain	Res	Type	Atoms	Z	Observed(Å)	Ideal(Å)
2	A	401	CXT	O2-C22	3.95	1.50	1.44
2	A	401	CXT	O2-C1	-3.63	1.31	1.41
2	A	401	CXT	C24-C37	3.35	1.60	1.53
2	A	401	CXT	O13-C7	-3.11	1.13	1.22
2	A	401	CXT	C28-C35	2.97	1.64	1.56
2	A	401	CXT	C27-C26	2.64	1.59	1.53
2	A	401	CXT	C21-C30	2.62	1.58	1.54
2	A	401	CXT	O4-C3	-2.60	1.41	1.46
3	A	801	CDL	OA8-CA7	2.40	1.40	1.33
2	A	401	CXT	C23-C22	2.35	1.56	1.51
2	A	401	CXT	O1-C1	2.17	1.47	1.41
2	A	401	CXT	O5-C4	-2.17	1.41	1.46
3	A	801	CDL	CB3-CB4	2.17	1.57	1.50
3	A	802	CDL	CA3-CA4	2.16	1.57	1.50
3	A	802	CDL	CB3-CB4	2.15	1.57	1.50
2	A	401	CXT	C8-C7	2.11	1.54	1.50
3	A	802	CDL	OA8-CA7	2.03	1.39	1.33
3	A	800	CDL	CA3-CA4	2.01	1.55	1.50

All (42) bond angle outliers are listed below:

Mol	Chain	Res	Type	Atoms	Z	Observed(°)	Ideal(°)
2	A	401	CXT	O2-C22-C21	14.67	151.20	107.83
2	A	401	CXT	O2-C22-C23	-7.26	86.37	107.83
2	A	401	CXT	O3-C7-C8	-6.71	99.12	111.46
2	A	401	CXT	C3-O4-S1	6.61	131.64	118.88
2	A	401	CXT	C26-C25-C30	-4.98	105.74	110.95
2	A	401	CXT	C38-C24-C37	-4.27	98.62	107.29
2	A	401	CXT	O12-C6-C5	4.18	125.65	111.29
3	A	800	CDL	OA6-CA4-CA3	3.94	115.26	106.13
2	A	401	CXT	C23-C24-C25	-3.65	101.64	110.16
2	A	401	CXT	C39-C30-C21	-3.36	103.87	108.97
2	A	401	CXT	C23-C24-C38	3.36	116.96	109.92
2	A	401	CXT	O3-C7-O13	3.32	131.72	123.70
3	A	801	CDL	OB8-CB6-CB4	3.28	117.99	108.43
3	A	801	CDL	CA6-CA4-CA3	-3.15	104.33	111.79
3	A	802	CDL	OB8-CB6-CB4	3.06	117.33	108.43
2	A	401	CXT	O3-C2-C1	3.04	115.36	108.40
2	A	401	CXT	C1-C2-C3	2.98	116.69	110.75
2	A	401	CXT	C1-O1-C5	2.92	119.42	113.69
3	A	801	CDL	O1-C1-CA2	-2.81	99.69	109.56
2	A	401	CXT	O3-C2-C3	-2.77	102.70	108.25

Continued on next page...

Continued from previous page...

Mol	Chain	Res	Type	Atoms	Z	Observed(°)	Ideal(°)
2	A	401	CXT	C39-C30-C25	2.76	118.04	112.92
2	A	401	CXT	C21-C30-C25	-2.68	105.02	107.95
2	A	401	CXT	C32-C33-C36	2.44	114.53	110.49
3	A	801	CDL	C52-C51-CB5	2.40	122.36	113.62
2	A	401	CXT	O23-C37-C24	2.40	126.18	122.52
3	A	801	CDL	CB4-OB6-CB5	2.38	123.65	117.79
3	A	802	CDL	OB6-CB5-OB7	-2.32	118.09	123.70
3	A	800	CDL	OB6-CB5-C51	2.32	116.50	111.50
3	A	800	CDL	OB6-CB5-OB7	-2.32	118.11	123.70
2	A	401	CXT	C3-C4-C5	-2.25	105.85	110.55
2	A	401	CXT	O2-C1-O1	-2.25	104.40	110.67
3	A	802	CDL	OB6-CB5-C51	2.23	116.30	111.50
3	A	802	CDL	O1-C1-CA2	-2.20	101.85	109.56
3	A	800	CDL	O1-C1-CA2	-2.14	102.06	109.56
3	A	802	CDL	C52-C51-CB5	2.13	121.37	113.62
3	A	801	CDL	CB6-CB4-CB3	-2.13	106.76	111.79
2	A	401	CXT	C6-C5-C4	2.13	119.51	113.33
3	A	800	CDL	C52-C51-CB5	2.12	121.32	113.62
2	A	401	CXT	O10-S2-O11	2.12	115.84	108.49
2	A	401	CXT	O1-C5-C6	-2.10	101.20	106.44
2	A	401	CXT	O2-C1-C2	2.02	113.20	109.10
2	A	401	CXT	O13-C7-C8	2.01	129.16	124.73

All (1) chirality outliers are listed below:

Mol	Chain	Res	Type	Atom
2	A	401	CXT	C1

All (114) torsion outliers are listed below:

Mol	Chain	Res	Type	Atoms
2	A	401	CXT	C21-C22-O2-C1
2	A	401	CXT	C25-C24-C37-O22
2	A	401	CXT	C25-C24-C37-O23
3	A	800	CDL	CA3-OA5-PA1-OA2
3	A	800	CDL	CA3-OA5-PA1-OA3
3	A	800	CDL	CA3-OA5-PA1-OA4
3	A	800	CDL	C11-CA5-OA6-CA4
3	A	800	CDL	CB2-OB2-PB2-OB3
3	A	800	CDL	CB2-OB2-PB2-OB4
3	A	800	CDL	CB2-OB2-PB2-OB5
3	A	800	CDL	CB3-OB5-PB2-OB3

Continued on next page...

Continued from previous page...

Mol	Chain	Res	Type	Atoms
3	A	800	CDL	OB7-CB5-OB6-CB4
3	A	800	CDL	C51-CB5-OB6-CB4
3	A	801	CDL	CA3-OA5-PA1-OA3
3	A	801	CDL	CA3-OA5-PA1-OA4
3	A	801	CDL	CB2-OB2-PB2-OB3
3	A	802	CDL	CA3-OA5-PA1-OA2
3	A	802	CDL	CA3-OA5-PA1-OA3
3	A	802	CDL	CA3-OA5-PA1-OA4
3	A	802	CDL	C11-CA5-OA6-CA4
3	A	802	CDL	CB2-OB2-PB2-OB3
3	A	802	CDL	CB2-OB2-PB2-OB4
3	A	802	CDL	CB2-OB2-PB2-OB5
3	A	802	CDL	C51-CB5-OB6-CB4
3	A	800	CDL	OA7-CA5-OA6-CA4
3	A	802	CDL	OA7-CA5-OA6-CA4
3	A	802	CDL	OB7-CB5-OB6-CB4
3	A	801	CDL	CA7-C31-C32-C33
3	A	800	CDL	CA5-C11-C12-C13
3	A	800	CDL	CB7-C71-C72-C73
3	A	801	CDL	C11-CA5-OA6-CA4
3	A	800	CDL	CB3-OB5-PB2-OB2
3	A	801	CDL	CA3-OA5-PA1-OA2
3	A	801	CDL	CB2-OB2-PB2-OB5
3	A	801	CDL	CB3-OB5-PB2-OB2
3	A	802	CDL	CB3-OB5-PB2-OB2
3	A	801	CDL	OA7-CA5-OA6-CA4
3	A	801	CDL	C51-C52-C53-C54
3	A	800	CDL	C73-C74-C75-C76
3	A	801	CDL	C11-C12-C13-C14
3	A	800	CDL	C76-C77-C78-C79
3	A	802	CDL	CB7-C71-C72-C73
3	A	800	CDL	C71-C72-C73-C74
3	A	802	CDL	C54-C55-C56-C57
3	A	802	CDL	C75-C76-C77-C78
3	A	802	CDL	C78-C79-C80-C81
3	A	800	CDL	C13-C14-C15-C16
3	A	800	CDL	C51-C52-C53-C54
3	A	800	CDL	C19-C20-C21-C22
3	A	802	CDL	C33-C34-C35-C36
3	A	800	CDL	C20-C21-C22-C23
3	A	801	CDL	C51-CB5-OB6-CB4
3	A	800	CDL	C72-C73-C74-C75

Continued on next page...

Continued from previous page...

Mol	Chain	Res	Type	Atoms
3	A	801	CDL	OB7-CB5-OB6-CB4
3	A	800	CDL	C11-C12-C13-C14
3	A	802	CDL	C38-C39-C40-C41
3	A	800	CDL	C75-C76-C77-C78
3	A	802	CDL	C17-C18-C19-C20
3	A	802	CDL	C52-C53-C54-C55
3	A	802	CDL	C76-C77-C78-C79
3	A	802	CDL	C51-C52-C53-C54
3	A	802	CDL	C34-C35-C36-C37
3	A	802	CDL	C36-C37-C38-C39
3	A	802	CDL	OA5-CA3-CA4-CA6
3	A	800	CDL	C17-C18-C19-C20
3	A	802	CDL	C73-C74-C75-C76
2	A	401	CXT	C23-C24-C37-O22
2	A	401	CXT	C23-C24-C38-O24
3	A	800	CDL	C21-C22-C23-C24
3	A	802	CDL	C55-C56-C57-C58
3	A	802	CDL	C21-C22-C23-C24
2	A	401	CXT	C23-C24-C38-O25
3	A	800	CDL	C55-C56-C57-C58
3	A	802	CDL	C71-C72-C73-C74
3	A	802	CDL	OA6-CA4-CA6-OA8
3	A	800	CDL	C78-C79-C80-C81
3	A	802	CDL	C80-C81-C82-C83
3	A	801	CDL	CB7-C71-C72-C73
3	A	800	CDL	OA5-CA3-CA4-CA6
3	A	802	CDL	CA3-CA4-CA6-OA8
3	A	801	CDL	OA5-CA3-CA4-OA6
3	A	801	CDL	C33-C34-C35-C36
3	A	800	CDL	OA5-CA3-CA4-OA6
3	A	802	CDL	C72-C73-C74-C75
3	A	801	CDL	C1-CB2-OB2-PB2
3	A	802	CDL	C1-CB2-OB2-PB2
3	A	801	CDL	C71-C72-C73-C74
3	A	800	CDL	C52-C53-C54-C55
3	A	802	CDL	OA5-CA3-CA4-OA6
3	A	802	CDL	C1-CA2-OA2-PA1
3	A	800	CDL	CB3-OB5-PB2-OB4
3	A	801	CDL	CB2-OB2-PB2-OB4
3	A	801	CDL	CB3-OB5-PB2-OB3
3	A	802	CDL	CB3-OB5-PB2-OB3
3	A	802	CDL	CB3-OB5-PB2-OB4

Continued on next page...

Continued from previous page...

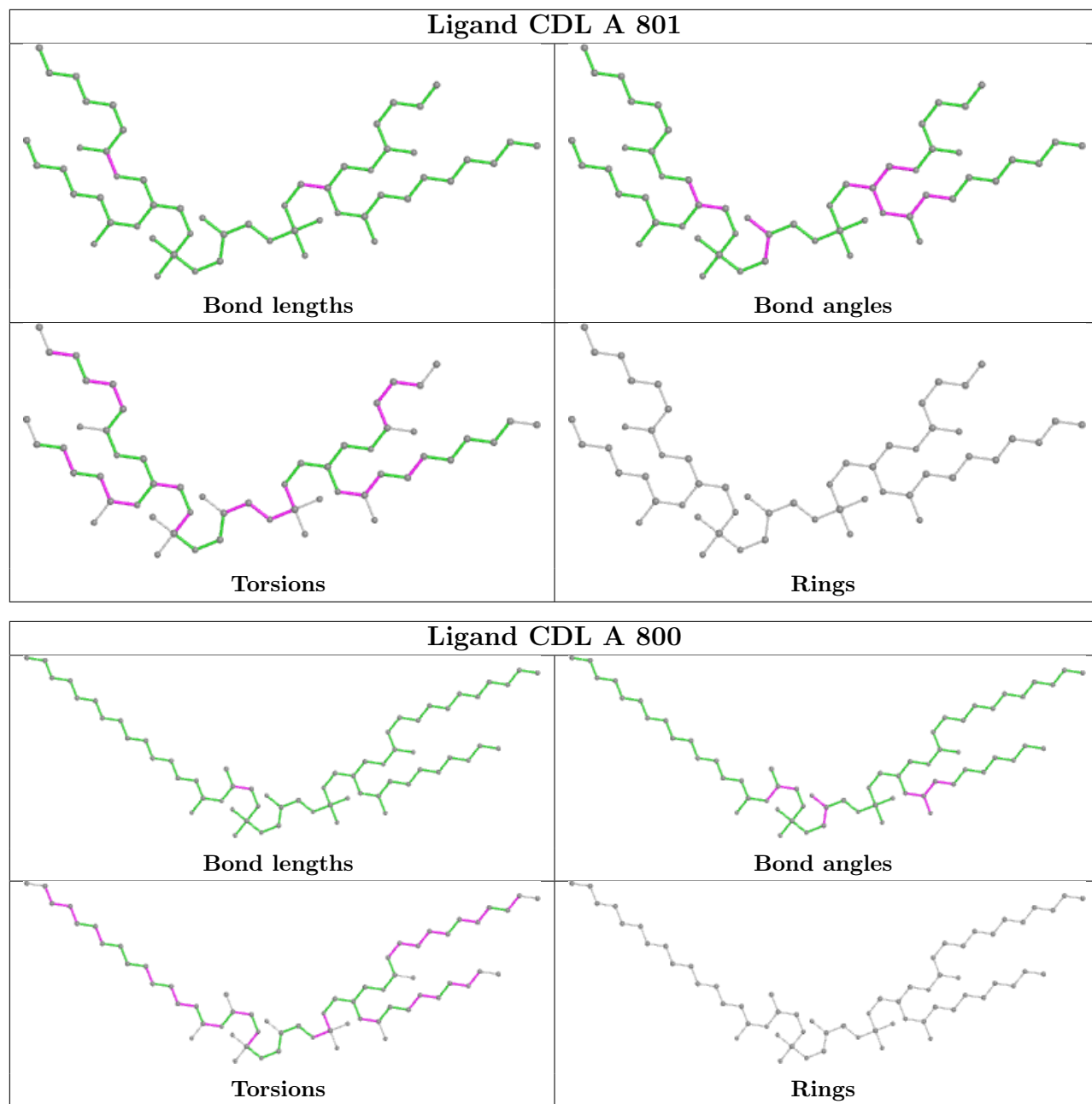
Mol	Chain	Res	Type	Atoms
3	A	802	CDL	CA5-C11-C12-C13
3	A	801	CDL	O1-C1-CB2-OB2
3	A	802	CDL	C31-C32-C33-C34
3	A	802	CDL	C77-C78-C79-C80
3	A	801	CDL	OA5-CA3-CA4-CA6
2	A	401	CXT	C38-C24-C37-O22
2	A	401	CXT	C37-C24-C38-O24
2	A	401	CXT	C23-C24-C37-O23
2	A	401	CXT	C38-C24-C37-O23
2	A	401	CXT	C37-C24-C38-O25
3	A	801	CDL	C31-C32-C33-C34
3	A	800	CDL	C54-C55-C56-C57
3	A	802	CDL	C52-C51-CB5-OB6
3	A	801	CDL	C72-C71-CB7-OB8
3	A	802	CDL	C52-C51-CB5-OB7
3	A	801	CDL	C52-C51-CB5-OB6
3	A	801	CDL	C12-C11-CA5-OA6
3	A	801	CDL	C72-C71-CB7-OB9
3	A	801	CDL	C52-C51-CB5-OB7

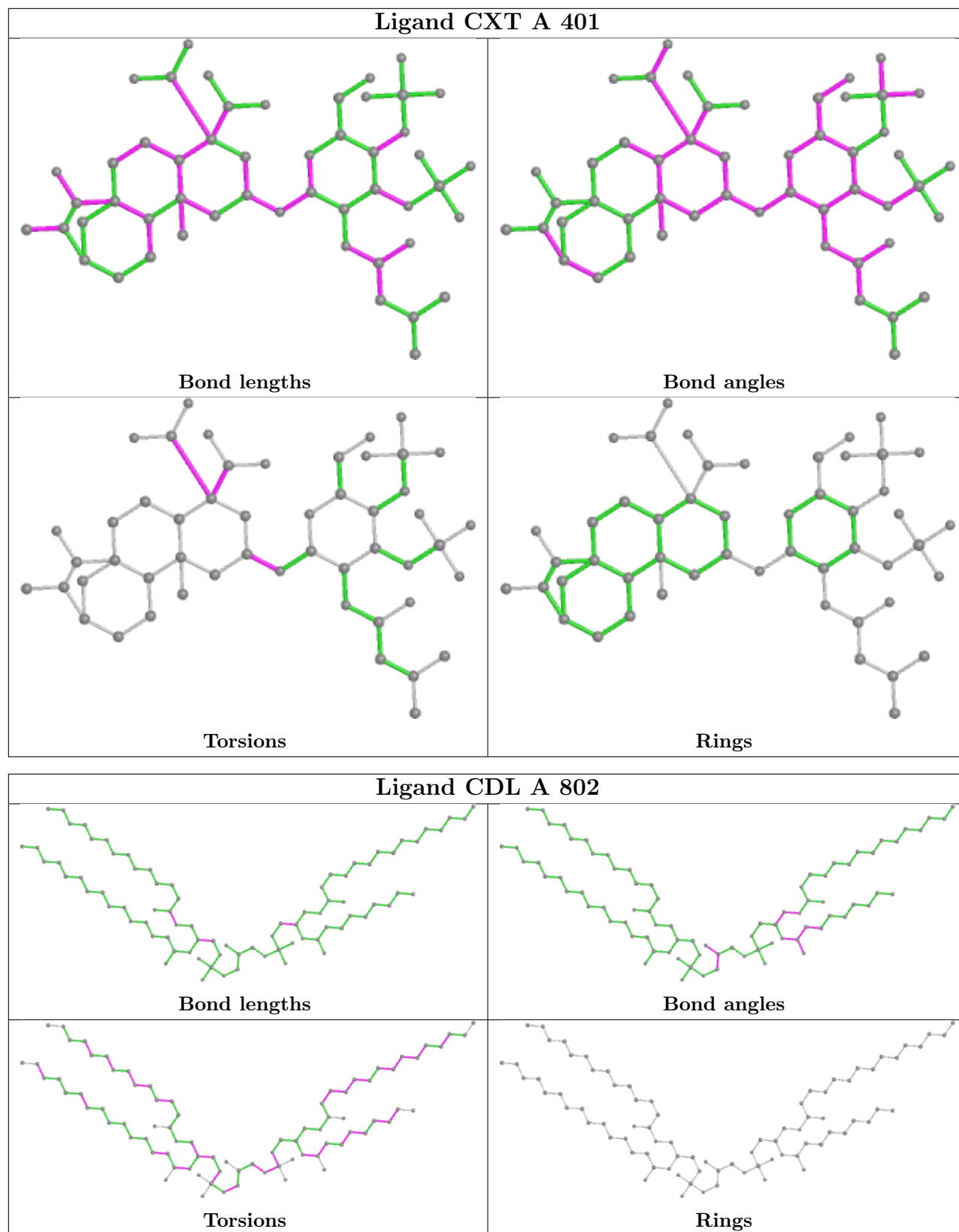
There are no ring outliers.

3 monomers are involved in 8 short contacts:

Mol	Chain	Res	Type	Clashes	Symm-Clashes
3	A	801	CDL	3	0
3	A	800	CDL	3	0
3	A	802	CDL	2	0

The following is a two-dimensional graphical depiction of Mogul quality analysis of bond lengths, bond angles, torsion angles, and ring geometry for all instances of the Ligand of Interest. In addition, ligands with molecular weight > 250 and outliers as shown on the validation Tables will also be included. For torsion angles, if less than 5% of the Mogul distribution of torsion angles is within 10 degrees of the torsion angle in question, then that torsion angle is considered an outlier. Any bond that is central to one or more torsion angles identified as an outlier by Mogul will be highlighted in the graph. For rings, the root-mean-square deviation (RMSD) between the ring in question and similar rings identified by Mogul is calculated over all ring torsion angles. If the average RMSD is greater than 60 degrees and the minimal RMSD between the ring in question and any Mogul-identified rings is also greater than 60 degrees, then that ring is considered an outlier. The outliers are highlighted in purple. The color gray indicates Mogul did not find sufficient equivalents in the CSD to analyse the geometry.





5.7 Other polymers [i](#)

There are no such residues in this entry.

5.8 Polymer linkage issues [i](#)

There are no chain breaks in this entry.

6 Fit of model and data [i](#)

6.1 Protein, DNA and RNA chains [i](#)

In the following table, the column labelled ‘#RSRZ> 2’ contains the number (and percentage) of RSRZ outliers, followed by percent RSRZ outliers for the chain as percentile scores relative to all X-ray entries and entries of similar resolution. The OWAB column contains the minimum, median, 95th percentile and maximum values of the occupancy-weighted average B-factor per residue. The column labelled ‘Q< 0.9’ lists the number of (and percentage) of residues with an average occupancy less than 0.9.

Mol	Chain	Analysed	<RSRZ>	#RSRZ>2	OWAB(Å ²)	Q<0.9
1	A	293/297 (98%)	0.36	12 (4%) 37 27	51, 82, 153, 185	0

All (12) RSRZ outliers are listed below:

Mol	Chain	Res	Type	RSRZ
1	A	1	SER	13.0
1	A	2	ASP	6.5
1	A	200	MET	4.3
1	A	134	ASP	4.0
1	A	169	LEU	3.1
1	A	138	THR	3.1
1	A	235	ARG	3.0
1	A	201	LEU	2.5
1	A	288	VAL	2.5
1	A	3	GLN	2.4
1	A	244	LYS	2.4
1	A	85	ALA	2.3

6.2 Non-standard residues in protein, DNA, RNA chains [i](#)

There are no non-standard protein/DNA/RNA residues in this entry.

6.3 Carbohydrates [i](#)

There are no monosaccharides in this entry.

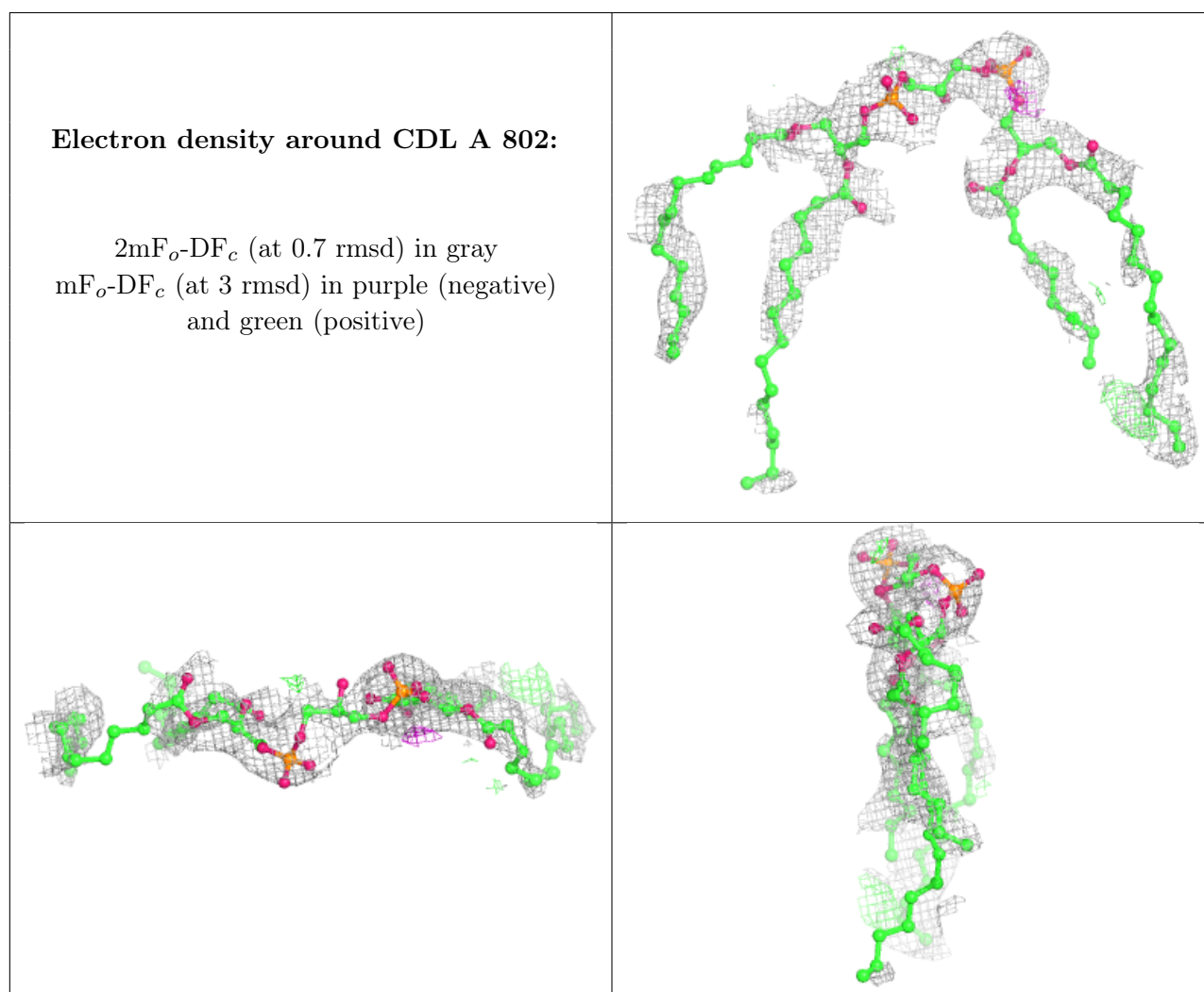
6.4 Ligands [i](#)

In the following table, the Atoms column lists the number of modelled atoms in the group and the number defined in the chemical component dictionary. The B-factors column lists the minimum,

median, 95th percentile and maximum values of B factors of atoms in the group. The column labelled 'Q< 0.9' lists the number of atoms with occupancy less than 0.9.

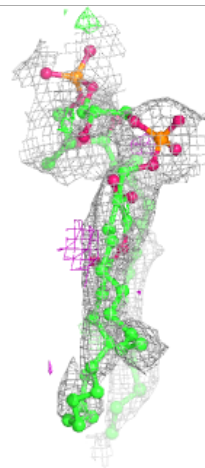
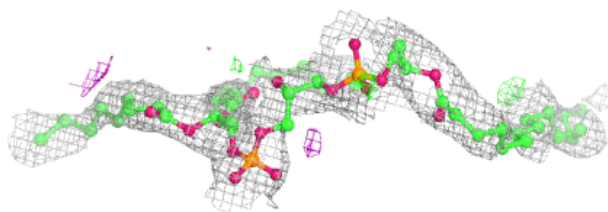
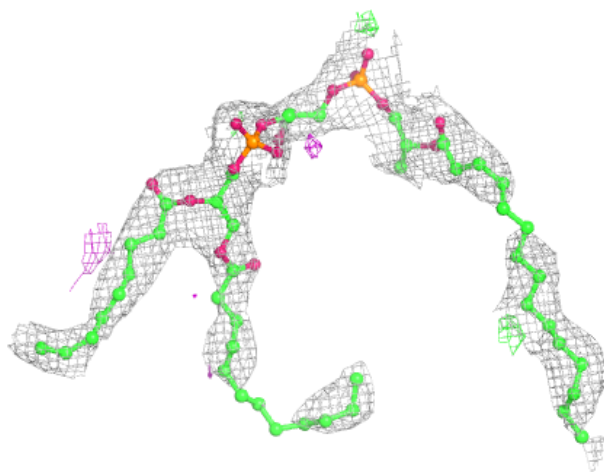
Mol	Type	Chain	Res	Atoms	RSCC	RSR	B-factors(Å ²)	Q<0.9
3	CDL	A	802	81/100	0.66	0.35	139,139,139,139	0
3	CDL	A	800	62/100	0.79	0.30	111,111,111,111	0
3	CDL	A	801	55/100	0.87	0.25	91,91,91,91	0
2	CXT	A	401	51/51	0.91	0.23	89,89,89,89	0

The following is a graphical depiction of the model fit to experimental electron density of all instances of the Ligand of Interest. In addition, ligands with molecular weight > 250 and outliers as shown on the geometry validation Tables will also be included. Each fit is shown from different orientation to approximate a three-dimensional view.



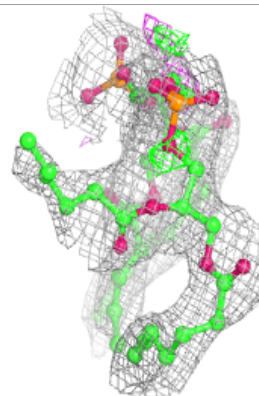
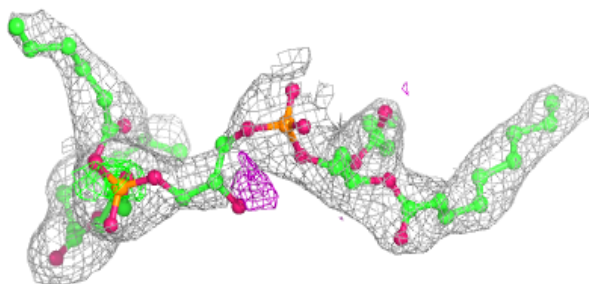
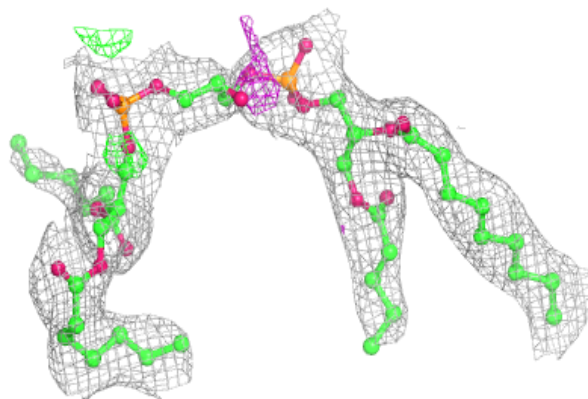
Electron density around CDL A 800:

$2mF_o-DF_c$ (at 0.7 rmsd) in gray
 mF_o-DF_c (at 3 rmsd) in purple (negative)
and green (positive)

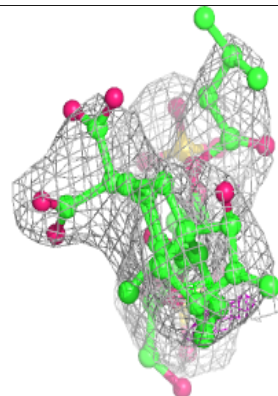
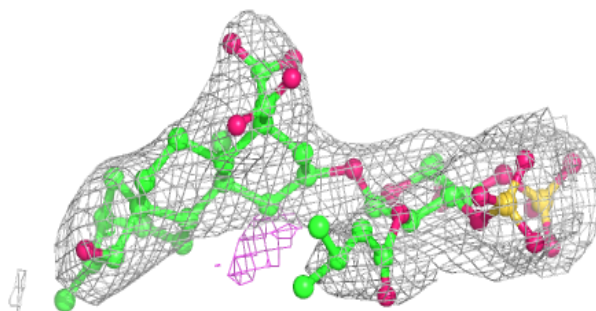
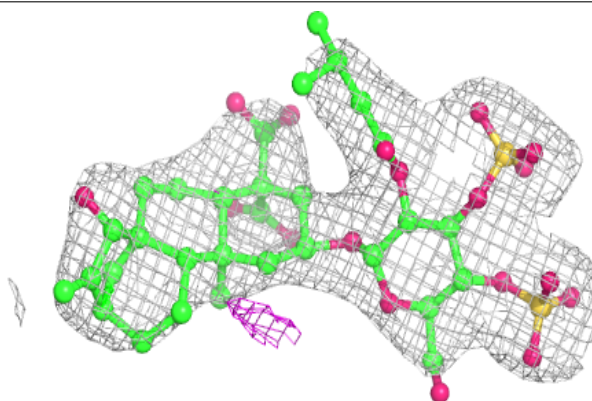


Electron density around CDL A 801:

$2mF_o-DF_c$ (at 0.7 rmsd) in gray
 mF_o-DF_c (at 3 rmsd) in purple (negative)
and green (positive)

**Electron density around CXT A 401:**

$2mF_o-DF_c$ (at 0.7 rmsd) in gray
 mF_o-DF_c (at 3 rmsd) in purple (negative)
and green (positive)



6.5 Other polymers [i](#)

There are no such residues in this entry.