



# Full wwPDB X-ray Structure Validation Report ⓘ

Jun 15, 2024 – 06:57 AM EDT

PDB ID : 2CKM  
Title : Torpedo californica acetylcholinesterase complexed with alkylene- linked bis-tacrine dimer (7 carbon linker)  
Authors : Brumshtein, B.; Rydberg, E.H.; Greenblatt, H.M.; Wong, D.M.; Shaya, D.; Williams, L.D.; Carlier, P.R.; Pang, Y.P.; Silman, I.; Sussman, J.L.  
Deposited on : 2006-04-20  
Resolution : 2.15 Å(reported)

This is a Full wwPDB X-ray Structure Validation Report for a publicly released PDB entry.

We welcome your comments at [validation@mail.wwpdb.org](mailto:validation@mail.wwpdb.org)

A user guide is available at

<https://www.wwpdb.org/validation/2017/XrayValidationReportHelp>

with specific help available everywhere you see the ⓘ symbol.

The types of validation reports are described at

<http://www.wwpdb.org/validation/2017/FAQs#types>.

---

The following versions of software and data (see [references ⓘ](#)) were used in the production of this report:

MolProbity : 4.02b-467  
Mogul : 2022.3.0, CSD as543be (2022)  
Xtriage (Phenix) : 1.20.1  
EDS : 2.37.1  
buster-report : 1.1.7 (2018)  
Percentile statistics : 20191225.v01 (using entries in the PDB archive December 25th 2019)  
Refmac : 5.8.0158  
CCP4 : 7.0.044 (Gargrove)  
Ideal geometry (proteins) : Engh & Huber (2001)  
Ideal geometry (DNA, RNA) : Parkinson et al. (1996)  
Validation Pipeline (wwPDB-VP) : 2.37.1

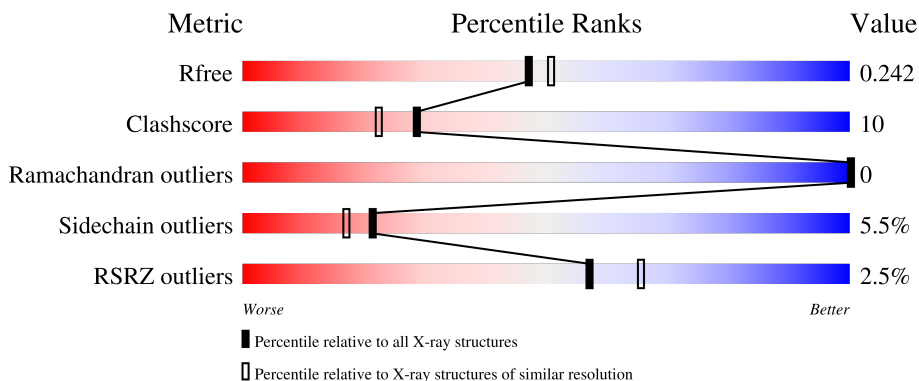
# 1 Overall quality at a glance

The following experimental techniques were used to determine the structure:

*X-RAY DIFFRACTION*

The reported resolution of this entry is 2.15 Å.

Percentile scores (ranging between 0-100) for global validation metrics of the entry are shown in the following graphic. The table shows the number of entries on which the scores are based.



Metric	Whole archive (#Entries)	Similar resolution (#Entries, resolution range(Å))
$R_{free}$	130704	1479 (2.16-2.16)
Clashscore	141614	1585 (2.16-2.16)
Ramachandran outliers	138981	1560 (2.16-2.16)
Sidechain outliers	138945	1559 (2.16-2.16)
RSRZ outliers	127900	1456 (2.16-2.16)

The table below summarises the geometric issues observed across the polymeric chains and their fit to the electron density. The red, orange, yellow and green segments of the lower bar indicate the fraction of residues that contain outliers for  $\geq 3$ , 2, 1 and 0 types of geometric quality criteria respectively. A grey segment represents the fraction of residues that are not modelled. The numeric value for each fraction is indicated below the corresponding segment, with a dot representing fractions  $\leq 5\%$ . The upper red bar (where present) indicates the fraction of residues that have poor fit to the electron density. The numeric value is given above the bar.

Mol	Chain	Length	Quality of chain
1	A	543	

## 2 Entry composition [i](#)

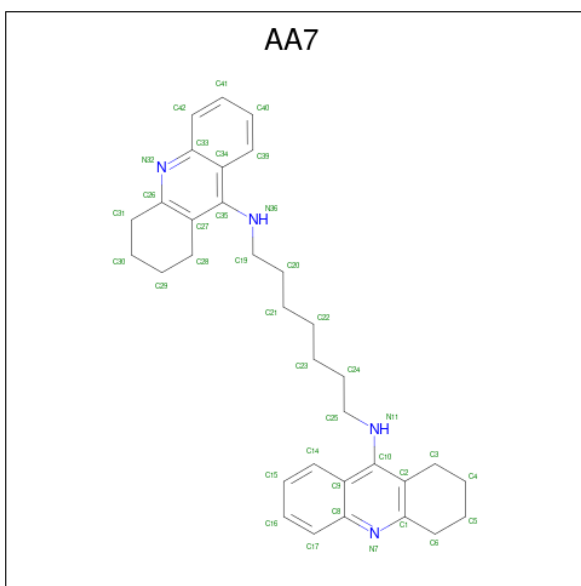
There are 4 unique types of molecules in this entry. The entry contains 4413 atoms, of which 0 are hydrogens and 0 are deuteriums.

In the tables below, the ZeroOcc column contains the number of atoms modelled with zero occupancy, the AltConf column contains the number of residues with at least one atom in alternate conformation and the Trace column contains the number of residues modelled with at most 2 atoms.

- Molecule 1 is a protein called ACETYLCHOLINESTERASE.

Mol	Chain	Residues	Atoms					ZeroOcc	AltConf	Trace
			Total	C	N	O	S			
1	A	528	4142	2671	694	755	22	0	0	0

- Molecule 2 is N,N'-DI-1,2,3,4-TETRAHYDROACRIDIN-9-YLHEPTANE-1,7-DIAMINE (three-letter code: AA7) (formula: C<sub>33</sub>H<sub>40</sub>N<sub>4</sub>).



Mol	Chain	Residues	Atoms			ZeroOcc	AltConf
			Total	C	N		
2	A	1	37	33	4	0	0

- Molecule 3 is 2-acetamido-2-deoxy-beta-D-glucopyranose (three-letter code: NAG) (formula: C<sub>8</sub>H<sub>15</sub>NO<sub>6</sub>).



Mol	Chain	Residues	Atoms			ZeroOcc	AltConf	
			Total	C	N			O
3	A	1	14	8	1	5	0	0
3	A	1	14	8	1	5	0	0

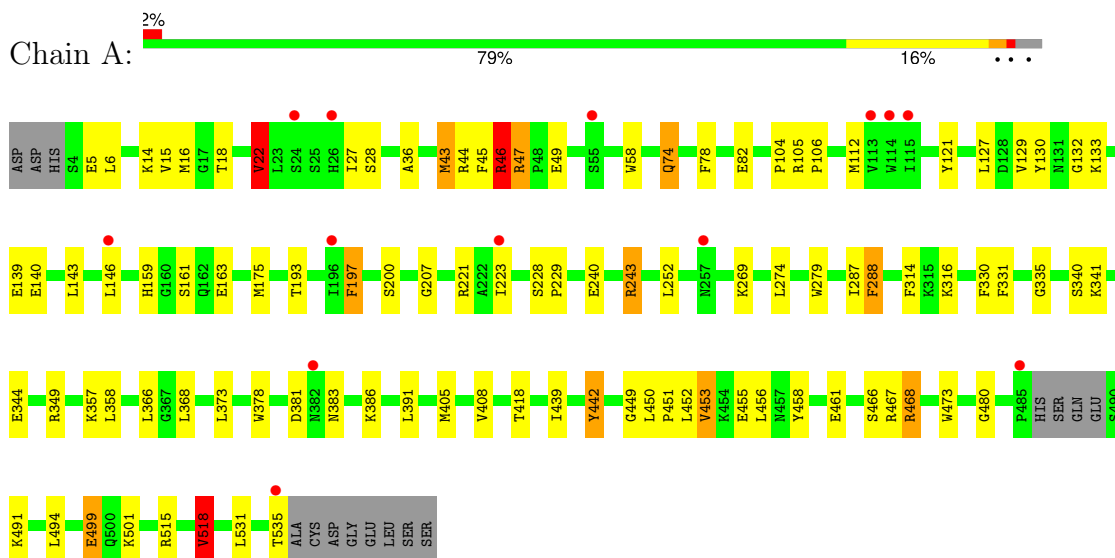
- Molecule 4 is water.

Mol	Chain	Residues	Atoms		ZeroOcc	AltConf
			Total	O		
4	A	206	206	206	0	0

### 3 Residue-property plots [i](#)

These plots are drawn for all protein, RNA, DNA and oligosaccharide chains in the entry. The first graphic for a chain summarises the proportions of the various outlier classes displayed in the second graphic. The second graphic shows the sequence view annotated by issues in geometry and electron density. Residues are color-coded according to the number of geometric quality criteria for which they contain at least one outlier: green = 0, yellow = 1, orange = 2 and red = 3 or more. A red dot above a residue indicates a poor fit to the electron density ( $RSRZ > 2$ ). Stretches of 2 or more consecutive residues without any outlier are shown as a green connector. Residues present in the sample, but not in the model, are shown in grey.

- Molecule 1: ACETYLCHOLINESTERASE



## 4 Data and refinement statistics

Property	Value	Source
Space group	P 31 2 1	Depositor
Cell constants a, b, c, $\alpha$ , $\beta$ , $\gamma$	111.88Å 111.88Å 137.41Å 90.00° 90.00° 120.00°	Depositor
Resolution (Å)	29.27 – 2.15 29.27 – 2.15	Depositor EDS
% Data completeness (in resolution range)	92.0 (29.27-2.15) 92.4 (29.27-2.15)	Depositor EDS
$R_{merge}$	0.05	Depositor
$R_{sym}$	(Not available)	Depositor
$\langle I/\sigma(I) \rangle$ <sup>1</sup>	1.44 (at 2.16Å)	Xtrriage
Refinement program	CNS 1.1	Depositor
R, $R_{free}$	0.211 , 0.249 0.204 , 0.242	Depositor DCC
$R_{free}$ test set	2517 reflections (4.99%)	wwPDB-VP
Wilson B-factor (Å <sup>2</sup> )	39.5	Xtrriage
Anisotropy	0.485	Xtrriage
Bulk solvent $k_{sol}$ (e/Å <sup>3</sup> ), $B_{sol}$ (Å <sup>2</sup> )	0.34 , 38.6	EDS
L-test for twinning <sup>2</sup>	$\langle  L  \rangle = 0.50$ , $\langle L^2 \rangle = 0.33$	Xtrriage
Estimated twinning fraction	0.024 for -h,-k,l	Xtrriage
$F_o, F_c$ correlation	0.96	EDS
Total number of atoms	4413	wwPDB-VP
Average B, all atoms (Å <sup>2</sup> )	44.0	wwPDB-VP

Xtrriage's analysis on translational NCS is as follows: *The largest off-origin peak in the Patterson function is 3.55% of the height of the origin peak. No significant pseudotranslation is detected.*

<sup>1</sup>Intensities estimated from amplitudes.

<sup>2</sup>Theoretical values of  $\langle |L| \rangle$ ,  $\langle L^2 \rangle$  for acentric reflections are 0.5, 0.333 respectively for untwinned datasets, and 0.375, 0.2 for perfectly twinned datasets.

## 5 Model quality i

### 5.1 Standard geometry i

Bond lengths and bond angles in the following residue types are not validated in this section: AA7, NAG

The Z score for a bond length (or angle) is the number of standard deviations the observed value is removed from the expected value. A bond length (or angle) with  $|Z| > 5$  is considered an outlier worth inspection. RMSZ is the root-mean-square of all Z scores of the bond lengths (or angles).

Mol	Chain	Bond lengths		Bond angles	
		RMSZ	# Z  >5	RMSZ	# Z  >5
1	A	0.84	5/4262 (0.1%)	0.90	10/5794 (0.2%)

Chiral center outliers are detected by calculating the chiral volume of a chiral center and verifying if the center is modelled as a planar moiety or with the opposite hand. A planarity outlier is detected by checking planarity of atoms in a peptide group, atoms in a mainchain group or atoms of a sidechain that are expected to be planar.

Mol	Chain	#Chirality outliers	#Planarity outliers
1	A	0	1

All (5) bond length outliers are listed below:

Mol	Chain	Res	Type	Atoms	Z	Observed(Å)	Ideal(Å)
1	A	344	GLU	CD-OE2	8.32	1.34	1.25
1	A	344	GLU	CD-OE1	6.83	1.33	1.25
1	A	47	ARG	CG-CD	5.64	1.66	1.51
1	A	14	LYS	CE-NZ	5.28	1.62	1.49
1	A	46	ARG	CZ-NH2	5.21	1.39	1.33

All (10) bond angle outliers are listed below:

Mol	Chain	Res	Type	Atoms	Z	Observed(°)	Ideal(°)
1	A	46	ARG	NE-CZ-NH1	-11.11	114.75	120.30
1	A	46	ARG	NE-CZ-NH2	8.36	124.48	120.30
1	A	14	LYS	CD-CE-NZ	-7.22	95.10	111.70
1	A	47	ARG	NE-CZ-NH1	-6.67	116.97	120.30
1	A	494	LEU	CA-CB-CG	6.03	129.18	115.30
1	A	518	VAL	CB-CA-C	-5.82	100.33	111.40
1	A	47	ARG	NE-CZ-NH2	5.72	123.16	120.30
1	A	491	LYS	N-CA-C	5.47	125.76	111.00

*Continued on next page...*

Continued from previous page...

Mol	Chain	Res	Type	Atoms	Z	Observed(°)	Ideal(°)
1	A	46	ARG	CD-NE-CZ	-5.45	115.98	123.60
1	A	22	VAL	CB-CA-C	-5.32	101.30	111.40

There are no chirality outliers.

All (1) planarity outliers are listed below:

Mol	Chain	Res	Type	Group
1	A	442	TYR	Sidechain

## 5.2 Too-close contacts [i](#)

In the following table, the Non-H and H(model) columns list the number of non-hydrogen atoms and hydrogen atoms in the chain respectively. The H(added) column lists the number of hydrogen atoms added and optimized by MolProbity. The Clashes column lists the number of clashes within the asymmetric unit, whereas Symm-Clashes lists symmetry-related clashes.

Mol	Chain	Non-H	H(model)	H(added)	Clashes	Symm-Clashes
1	A	4142	0	3948	77	0
2	A	37	0	40	4	0
3	A	28	0	26	0	0
4	A	206	0	0	7	1
All	All	4413	0	4014	80	1

The all-atom clashscore is defined as the number of clashes found per 1000 atoms (including hydrogen atoms). The all-atom clashscore for this structure is 10.

All (80) close contacts within the same asymmetric unit are listed below, sorted by their clash magnitude.

Atom-1	Atom-2	Interatomic distance (Å)	Clash overlap (Å)
1:A:468:ARG:HG3	1:A:468:ARG:HH11	1.32	0.92
1:A:46:ARG:HG3	4:A:2013:HOH:O	1.76	0.84
1:A:287:ILE:HD11	1:A:335:GLY:HA3	1.64	0.80
1:A:22:VAL:HG13	1:A:133:LYS:HG3	1.64	0.79
1:A:468:ARG:NH1	4:A:2184:HOH:O	2.15	0.79
1:A:349:ARG:HD3	1:A:381:ASP:O	1.91	0.70
1:A:221:ARG:HD3	1:A:480:GLY:HA2	1.77	0.65
1:A:468:ARG:HG3	1:A:468:ARG:NH1	2.09	0.65
1:A:121:TYR:CD1	2:A:1536:AA7:H15	2.32	0.65
1:A:132:GLY:HA3	1:A:143:LEU:HD23	1.79	0.64

Continued on next page...



*Continued from previous page...*

Atom-1	Atom-2	Interatomic distance (Å)	Clash overlap (Å)
2:A:1536:AA7:H14	2:A:1536:AA7:H251	1.80	0.64
1:A:46:ARG:HG3	1:A:47:ARG:N	2.12	0.63
1:A:197:PHE:CB	1:A:223:ILE:HB	2.32	0.60
1:A:46:ARG:HG3	1:A:47:ARG:H	1.67	0.59
1:A:499:GLU:HB3	1:A:501:LYS:HG3	1.85	0.59
1:A:228:SER:HB2	1:A:229:PRO:HD2	1.85	0.58
2:A:1536:AA7:H191	4:A:2054:HOH:O	2.02	0.57
1:A:46:ARG:CZ	1:A:163:GLU:OE2	2.52	0.57
1:A:455:GLU:CD	1:A:455:GLU:H	2.09	0.56
1:A:74:GLN:HE21	1:A:74:GLN:CA	2.19	0.56
1:A:46:ARG:CG	1:A:47:ARG:N	2.69	0.55
1:A:140:GLU:O	1:A:140:GLU:HG3	2.05	0.55
1:A:515:ARG:O	1:A:518:VAL:HG22	2.07	0.55
1:A:78:PHE:O	1:A:82:GLU:HB2	2.07	0.55
1:A:27:ILE:HD12	1:A:27:ILE:C	2.28	0.54
1:A:373:LEU:HD12	1:A:378:TRP:HE1	1.72	0.54
1:A:132:GLY:HA3	1:A:143:LEU:CD2	2.39	0.53
1:A:531:LEU:C	1:A:531:LEU:HD23	2.29	0.53
1:A:468:ARG:HH11	1:A:468:ARG:CG	2.09	0.52
1:A:449:GLY:HA2	1:A:466:SER:OG	2.10	0.52
1:A:140:GLU:HB2	4:A:2068:HOH:O	2.09	0.51
1:A:288:PHE:CE2	1:A:331:PHE:CE1	2.99	0.51
1:A:515:ARG:HB3	1:A:518:VAL:HG22	1.92	0.51
1:A:405:MET:HA	1:A:408:VAL:HG12	1.91	0.51
1:A:450:LEU:N	1:A:451:PRO:CD	2.75	0.50
1:A:197:PHE:HB2	1:A:223:ILE:HB	1.92	0.50
1:A:36:ALA:HB2	1:A:175:MET:HE2	1.94	0.49
1:A:78:PHE:CZ	1:A:341:LYS:HE2	2.46	0.49
1:A:240:GLU:OE2	1:A:243:ARG:NH1	2.45	0.49
1:A:383:ASN:ND2	1:A:386:LYS:HD2	2.27	0.48
1:A:357:LYS:HD3	1:A:368:LEU:HD11	1.94	0.48
1:A:197:PHE:HB3	1:A:223:ILE:HB	1.95	0.48
1:A:159:HIS:ND1	4:A:2072:HOH:O	2.35	0.48
1:A:451:PRO:HA	1:A:458:TYR:CD1	2.48	0.47
1:A:453:VAL:CG2	1:A:453:VAL:O	2.63	0.47
1:A:112:MET:HB2	1:A:143:LEU:HD12	1.95	0.47
1:A:46:ARG:NH2	1:A:163:GLU:OE2	2.48	0.47
1:A:468:ARG:NH1	1:A:468:ARG:CG	2.71	0.47
1:A:146:LEU:C	1:A:146:LEU:HD12	2.36	0.46
1:A:287:ILE:HD12	1:A:287:ILE:HA	1.77	0.46
1:A:193:THR:HG22	1:A:193:THR:O	2.16	0.45

*Continued on next page...*

Continued from previous page...

Atom-1	Atom-2	Interatomic distance (Å)	Clash overlap (Å)
1:A:140:GLU:HA	1:A:140:GLU:OE1	2.17	0.44
1:A:127:LEU:HD12	1:A:130:TYR:CE2	2.52	0.44
1:A:499:GLU:CG	1:A:501:LYS:HE3	2.47	0.44
1:A:515:ARG:HB3	1:A:518:VAL:CG2	2.47	0.44
1:A:452:LEU:HD21	1:A:467:ARG:HG3	2.00	0.44
1:A:22:VAL:CG1	1:A:133:LYS:HG3	2.41	0.43
1:A:357:LYS:HD3	1:A:368:LEU:CD1	2.48	0.43
1:A:461:GLU:H	1:A:461:GLU:CD	2.22	0.43
1:A:36:ALA:HB2	1:A:175:MET:CE	2.49	0.43
1:A:453:VAL:CG2	1:A:456:LEU:HG	2.48	0.43
2:A:1536:AA7:H202	4:A:2033:HOH:O	2.18	0.43
1:A:139:GLU:O	1:A:140:GLU:HB3	2.18	0.43
1:A:221:ARG:CD	1:A:480:GLY:HA2	2.47	0.42
1:A:450:LEU:N	1:A:450:LEU:CD2	2.82	0.42
1:A:252:LEU:HB3	1:A:269:LYS:HE3	2.00	0.42
1:A:439:ILE:HB	1:A:442:TYR:CD1	2.54	0.42
1:A:408:VAL:HG23	1:A:418:THR:HG21	2.00	0.42
1:A:43:MET:O	1:A:46:ARG:HB3	2.21	0.41
1:A:207:GLY:HA3	1:A:229:PRO:HD3	2.03	0.41
1:A:287:ILE:HD11	1:A:335:GLY:CA	2.42	0.41
1:A:105:ARG:HA	1:A:106:PRO:HD3	1.96	0.41
1:A:6:LEU:HB2	1:A:16:MET:CE	2.50	0.41
1:A:15:VAL:HG12	1:A:58:TRP:HB3	2.03	0.41
1:A:366:LEU:HD23	1:A:535:THR:HG21	2.02	0.41
1:A:5:GLU:OE2	1:A:104:PRO:HA	2.21	0.41
1:A:6:LEU:HB2	1:A:16:MET:HE1	2.02	0.40
1:A:44:ARG:O	1:A:45:PHE:HB2	2.21	0.40
1:A:314:PHE:O	1:A:316:LYS:HD2	2.20	0.40
1:A:341:LYS:HE2	4:A:2141:HOH:O	2.21	0.40

All (1) symmetry-related close contacts are listed below. The label for Atom-2 includes the symmetry operator and encoded unit-cell translations to be applied.

Atom-1	Atom-2	Interatomic distance (Å)	Clash overlap (Å)
4:A:2149:HOH:O	4:A:2149:HOH:O[4_556]	2.13	0.07

## 5.3 Torsion angles [i](#)

### 5.3.1 Protein backbone [i](#)

In the following table, the Percentiles column shows the percent Ramachandran outliers of the chain as a percentile score with respect to all X-ray entries followed by that with respect to entries of similar resolution.

The Analysed column shows the number of residues for which the backbone conformation was analysed, and the total number of residues.

Mol	Chain	Analysed	Favoured	Allowed	Outliers	Percentiles
1	A	524/543 (96%)	500 (95%)	24 (5%)	0	100 100

There are no Ramachandran outliers to report.

### 5.3.2 Protein sidechains [i](#)

In the following table, the Percentiles column shows the percent sidechain outliers of the chain as a percentile score with respect to all X-ray entries followed by that with respect to entries of similar resolution.

The Analysed column shows the number of residues for which the sidechain conformation was analysed, and the total number of residues.

Mol	Chain	Analysed	Rotameric	Outliers	Percentiles
1	A	440/474 (93%)	416 (94%)	24 (6%)	21 17

All (24) residues with a non-rotameric sidechain are listed below:

Mol	Chain	Res	Type
1	A	18	THR
1	A	22	VAL
1	A	28	SER
1	A	43	MET
1	A	46	ARG
1	A	49	GLU
1	A	74	GLN
1	A	129	VAL
1	A	161	SER
1	A	197	PHE
1	A	200	SER
1	A	243	ARG
1	A	274	LEU

*Continued on next page...*

*Continued from previous page...*

Mol	Chain	Res	Type
1	A	279	TRP
1	A	288	PHE
1	A	330	PHE
1	A	340	SER
1	A	358	LEU
1	A	391	LEU
1	A	453	VAL
1	A	468	ARG
1	A	473	TRP
1	A	499	GLU
1	A	518	VAL

Sometimes sidechains can be flipped to improve hydrogen bonding and reduce clashes. All (2) such sidechains are listed below:

Mol	Chain	Res	Type
1	A	68	GLN
1	A	74	GLN

### 5.3.3 RNA [i](#)

There are no RNA molecules in this entry.

## 5.4 Non-standard residues in protein, DNA, RNA chains [i](#)

There are no non-standard protein/DNA/RNA residues in this entry.

## 5.5 Carbohydrates [i](#)

There are no monosaccharides in this entry.

## 5.6 Ligand geometry [i](#)

3 ligands are modelled in this entry.

In the following table, the Counts columns list the number of bonds (or angles) for which Mogul statistics could be retrieved, the number of bonds (or angles) that are observed in the model and the number of bonds (or angles) that are defined in the Chemical Component Dictionary. The Link column lists molecule types, if any, to which the group is linked. The Z score for a bond length (or angle) is the number of standard deviations the observed value is removed from the

expected value. A bond length (or angle) with  $|Z| > 2$  is considered an outlier worth inspection. RMSZ is the root-mean-square of all Z scores of the bond lengths (or angles).

Mol	Type	Chain	Res	Link	Bond lengths			Bond angles		
					Counts	RMSZ	# $ Z  > 2$	Counts	RMSZ	# $ Z  > 2$
3	NAG	A	1537	1	14,14,15	1.03	1 (7%)	17,19,21	1.19	2 (11%)
2	AA7	A	1536	-	42,42,42	2.33	16 (38%)	51,57,57	2.55	15 (29%)
3	NAG	A	1538	1	14,14,15	0.83	0	17,19,21	1.06	1 (5%)

In the following table, the Chirals column lists the number of chiral outliers, the number of chiral centers analysed, the number of these observed in the model and the number defined in the Chemical Component Dictionary. Similar counts are reported in the Torsion and Rings columns. '-' means no outliers of that kind were identified.

Mol	Type	Chain	Res	Link	Chirals	Torsions	Rings
3	NAG	A	1537	1	-	0/6/23/26	0/1/1/1
2	AA7	A	1536	-	-	5/12/26/26	0/6/6/6
3	NAG	A	1538	1	-	2/6/23/26	0/1/1/1

All (17) bond length outliers are listed below:

Mol	Chain	Res	Type	Atoms	Z	Observed(Å)	Ideal(Å)
2	A	1536	AA7	C10-C9	6.74	1.55	1.43
2	A	1536	AA7	C1-N7	4.96	1.38	1.32
2	A	1536	AA7	C26-N32	4.78	1.38	1.32
2	A	1536	AA7	C10-C2	4.52	1.46	1.39
2	A	1536	AA7	C35-C27	4.47	1.46	1.39
2	A	1536	AA7	C9-C8	3.78	1.48	1.42
2	A	1536	AA7	C16-C15	3.20	1.45	1.38
2	A	1536	AA7	C27-C26	2.60	1.44	1.40
2	A	1536	AA7	C31-C26	2.57	1.54	1.50
2	A	1536	AA7	C2-C1	2.29	1.44	1.40
2	A	1536	AA7	C10-N11	2.27	1.44	1.37
2	A	1536	AA7	C28-C27	2.23	1.55	1.51
2	A	1536	AA7	C41-C40	2.19	1.43	1.38
3	A	1537	NAG	O5-C5	2.11	1.47	1.43
2	A	1536	AA7	C15-C14	2.10	1.41	1.36
2	A	1536	AA7	C14-C9	2.07	1.46	1.42
2	A	1536	AA7	C16-C17	2.06	1.41	1.36

All (18) bond angle outliers are listed below:

Mol	Chain	Res	Type	Atoms	Z	Observed(°)	Ideal(°)
2	A	1536	AA7	C27-C26-N32	-7.24	118.53	123.66
2	A	1536	AA7	C1-N7-C8	6.95	125.89	117.67
2	A	1536	AA7	C26-N32-C33	6.46	125.31	117.67
2	A	1536	AA7	C2-C1-N7	-5.42	119.82	123.66
2	A	1536	AA7	C17-C8-C9	4.57	124.05	119.13
2	A	1536	AA7	C14-C9-C8	-4.30	113.57	118.36
2	A	1536	AA7	C28-C27-C26	-4.29	116.86	120.90
2	A	1536	AA7	C34-C35-N36	-3.69	110.39	121.86
2	A	1536	AA7	C34-C33-N32	-3.62	118.97	122.80
2	A	1536	AA7	C9-C8-N7	-3.57	119.02	122.80
2	A	1536	AA7	C42-C33-C34	3.24	122.62	119.13
2	A	1536	AA7	C3-C2-C1	-2.98	118.10	120.90
2	A	1536	AA7	C10-C2-C1	2.89	120.46	118.68
3	A	1537	NAG	C2-N2-C7	-2.56	119.47	122.90
3	A	1538	NAG	C2-N2-C7	-2.47	119.58	122.90
2	A	1536	AA7	C39-C34-C33	-2.29	115.81	118.36
2	A	1536	AA7	C14-C9-C10	2.26	128.76	124.70
3	A	1537	NAG	C4-C3-C2	-2.07	107.99	111.02

There are no chirality outliers.

All (7) torsion outliers are listed below:

Mol	Chain	Res	Type	Atoms
3	A	1538	NAG	O5-C5-C6-O6
3	A	1538	NAG	C4-C5-C6-O6
2	A	1536	AA7	N36-C19-C20-C21
2	A	1536	AA7	C19-C20-C21-C22
2	A	1536	AA7	C34-C35-N36-C19
2	A	1536	AA7	C20-C21-C22-C23
2	A	1536	AA7	C20-C19-N36-C35

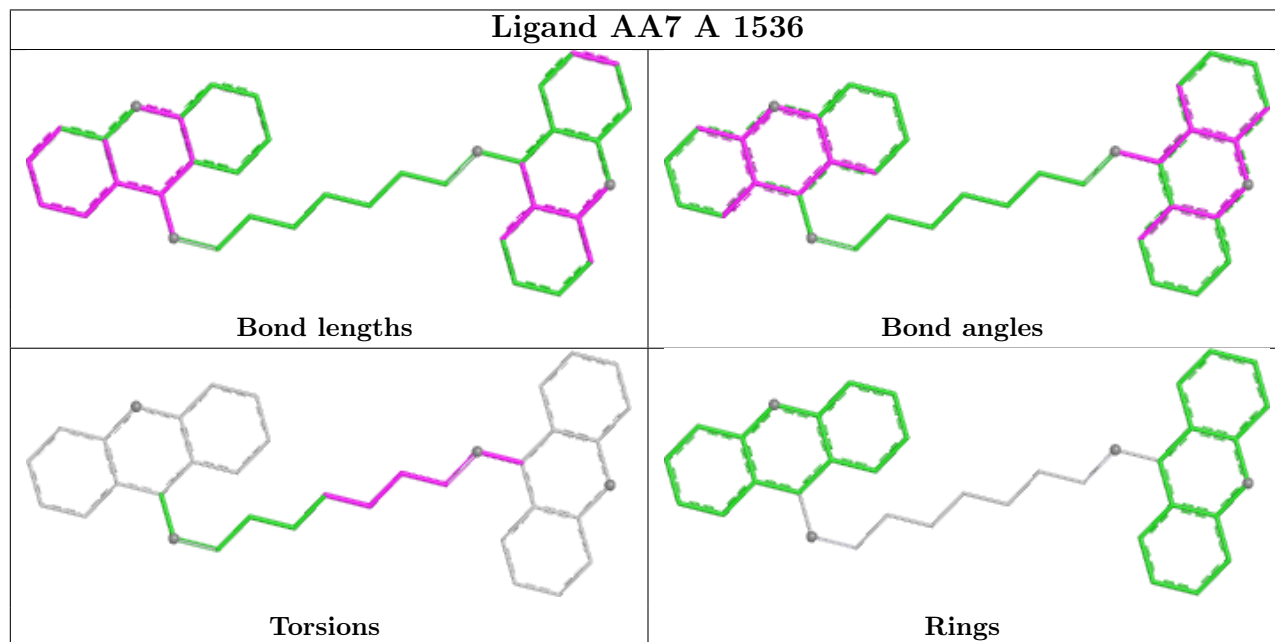
There are no ring outliers.

1 monomer is involved in 4 short contacts:

Mol	Chain	Res	Type	Clashes	Symm-Clashes
2	A	1536	AA7	4	0

The following is a two-dimensional graphical depiction of Mogul quality analysis of bond lengths, bond angles, torsion angles, and ring geometry for all instances of the Ligand of Interest. In addition, ligands with molecular weight > 250 and outliers as shown on the validation Tables will also be included. For torsion angles, if less than 5% of the Mogul distribution of torsion angles is within 10 degrees of the torsion angle in question, then that torsion angle is considered an outlier. Any bond that is central to one or more torsion angles identified as an outlier by Mogul will be

highlighted in the graph. For rings, the root-mean-square deviation (RMSD) between the ring in question and similar rings identified by Mogul is calculated over all ring torsion angles. If the average RMSD is greater than 60 degrees and the minimal RMSD between the ring in question and any Mogul-identified rings is also greater than 60 degrees, then that ring is considered an outlier. The outliers are highlighted in purple. The color gray indicates Mogul did not find sufficient equivalents in the CSD to analyse the geometry.



## 5.7 Other polymers [i](#)

There are no such residues in this entry.

## 5.8 Polymer linkage issues [i](#)

There are no chain breaks in this entry.

## 6 Fit of model and data [i](#)

### 6.1 Protein, DNA and RNA chains [i](#)

In the following table, the column labelled ‘#RSRZ> 2’ contains the number (and percentage) of RSRZ outliers, followed by percent RSRZ outliers for the chain as percentile scores relative to all X-ray entries and entries of similar resolution. The OWAB column contains the minimum, median, 95<sup>th</sup> percentile and maximum values of the occupancy-weighted average B-factor per residue. The column labelled ‘Q< 0.9’ lists the number of (and percentage) of residues with an average occupancy less than 0.9.

Mol	Chain	Analysed	<RSRZ>	#RSRZ>2	OWAB(Å <sup>2</sup> )	Q<0.9
1	A	528/543 (97%)	-0.17	13 (2%) 57 65	30, 43, 58, 77	0

All (13) RSRZ outliers are listed below:

Mol	Chain	Res	Type	RSRZ
1	A	485	PRO	3.7
1	A	55	SER	3.5
1	A	115	ILE	2.9
1	A	535	THR	2.9
1	A	24	SER	2.7
1	A	257	ASN	2.6
1	A	223	ILE	2.3
1	A	196	ILE	2.3
1	A	114	TRP	2.2
1	A	26	HIS	2.1
1	A	382	ASN	2.1
1	A	146	LEU	2.0
1	A	113	VAL	2.0

### 6.2 Non-standard residues in protein, DNA, RNA chains [i](#)

There are no non-standard protein/DNA/RNA residues in this entry.

### 6.3 Carbohydrates [i](#)

There are no monosaccharides in this entry.

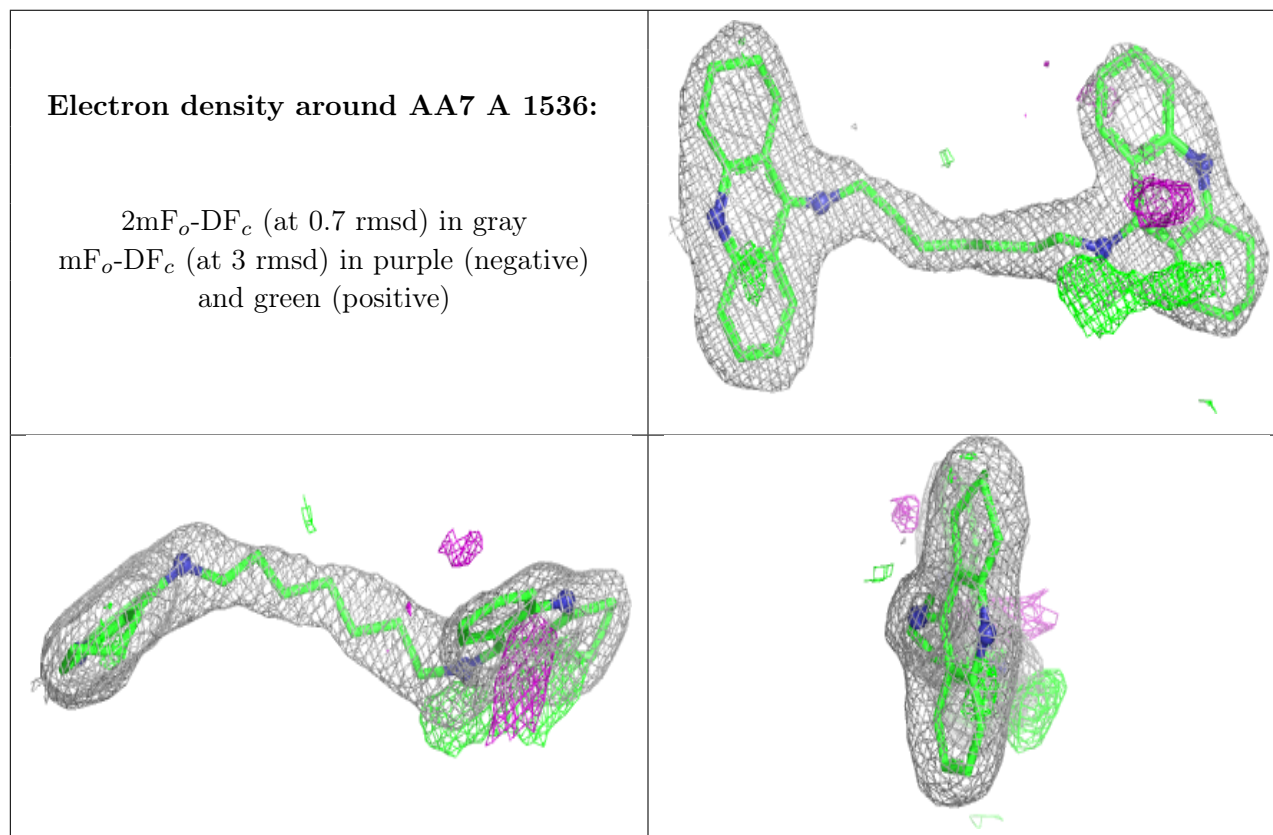


## 6.4 Ligands [i](#)

In the following table, the Atoms column lists the number of modelled atoms in the group and the number defined in the chemical component dictionary. The B-factors column lists the minimum, median, 95<sup>th</sup> percentile and maximum values of B factors of atoms in the group. The column labelled 'Q<0.9' lists the number of atoms with occupancy less than 0.9.

Mol	Type	Chain	Res	Atoms	RSCC	RSR	B-factors( $\text{\AA}^2$ )	Q<0.9
3	NAG	A	1537	14/15	0.81	0.22	72,75,78,81	0
2	AA7	A	1536	37/37	0.90	0.19	39,51,58,59	0
3	NAG	A	1538	14/15	0.93	0.22	53,55,57,59	0

The following is a graphical depiction of the model fit to experimental electron density of all instances of the Ligand of Interest. In addition, ligands with molecular weight > 250 and outliers as shown on the geometry validation Tables will also be included. Each fit is shown from different orientation to approximate a three-dimensional view.



## 6.5 Other polymers [i](#)

There are no such residues in this entry.