



Full wwPDB X-ray Structure Validation Report ⓘ

Feb 8, 2024 – 10:54 AM EST

PDB ID : 2HBE
Title : HIGH RESOLUTION X-RAY STRUCTURES OF MYOGLOBIN-AND
HEMOGLOBIN-ALKYL ISOCYANIDE COMPLEXES
Authors : Johnson, K.A.; Olson, J.S.; Phillips Jr., G.N.
Deposited on : 1994-08-31
Resolution : 2.00 Å(reported)

This is a Full wwPDB X-ray Structure Validation Report for a publicly released PDB entry.

We welcome your comments at validation@mail.wwpdb.org

A user guide is available at

<https://www.wwpdb.org/validation/2017/XrayValidationReportHelp>

with specific help available everywhere you see the ⓘ symbol.

The types of validation reports are described at

<http://www.wwpdb.org/validation/2017/FAQs#types>.

The following versions of software and data (see [references ⓘ](#)) were used in the production of this report:

MolProbity : 4.02b-467
Mogul : 1.8.5 (274361), CSD as541be (2020)
Xtrriage (Phenix) : **NOT EXECUTED**
EDS : **NOT EXECUTED**
buster-report : 1.1.7 (2018)
Percentile statistics : 20191225.v01 (using entries in the PDB archive December 25th 2019)
Ideal geometry (proteins) : Engh & Huber (2001)
Ideal geometry (DNA, RNA) : Parkinson et al. (1996)
Validation Pipeline (wwPDB-VP) : 2.36

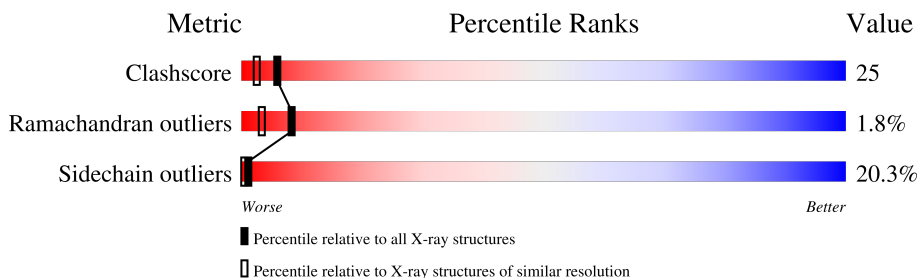
1 Overall quality at a glance

The following experimental techniques were used to determine the structure:

X-RAY DIFFRACTION

The reported resolution of this entry is 2.00 Å.

Percentile scores (ranging between 0-100) for global validation metrics of the entry are shown in the following graphic. The table shows the number of entries on which the scores are based.



Metric	Whole archive (#Entries)	Similar resolution (#Entries, resolution range(Å))
Clashscore	141614	9178 (2.00-2.00)
Ramachandran outliers	138981	9054 (2.00-2.00)
Sidechain outliers	138945	9053 (2.00-2.00)

The table below summarises the geometric issues observed across the polymeric chains and their fit to the electron density. The red, orange, yellow and green segments of the lower bar indicate the fraction of residues that contain outliers for ≥ 3 , 2, 1 and 0 types of geometric quality criteria respectively. A grey segment represents the fraction of residues that are not modelled. The numeric value for each fraction is indicated below the corresponding segment, with a dot representing fractions $\leq 5\%$

Note EDS was not executed.

Mol	Chain	Length	Quality of chain		
1	A	141	58%	34%	8%
2	B	146	58%	33%	10%

The following table lists non-polymeric compounds, carbohydrate monomers and non-standard residues in protein, DNA, RNA chains that are outliers for geometric or electron-density-fit criteria:

Mol	Type	Chain	Res	Chirality	Geometry	Clashes	Electron density
4	NBN	A	143	-	-	X	-
4	NBN	B	148	-	-	X	-

2 Entry composition i

There are 5 unique types of molecules in this entry. The entry contains 2355 atoms, of which 0 are hydrogens and 0 are deuteriums.

In the tables below, the ZeroOcc column contains the number of atoms modelled with zero occupancy, the AltConf column contains the number of residues with at least one atom in alternate conformation and the Trace column contains the number of residues modelled with at most 2 atoms.

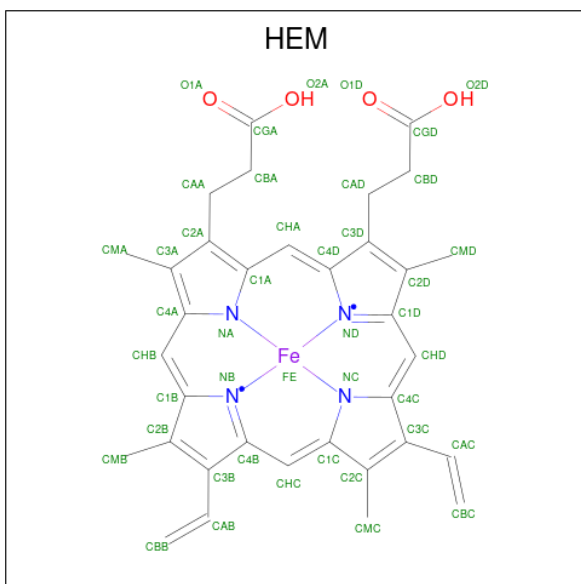
- Molecule 1 is a protein called HEMOGLOBIN A (N-BUTYL ISOCYANIDE) (ALPHA CHAIN).

Mol	Chain	Residues	Atoms					ZeroOcc	AltConf	Trace
			Total	C	N	O	S			
1	A	141	1069	685	187	194	3	0	0	0

- Molecule 2 is a protein called HEMOGLOBIN A (N-BUTYL ISOCYANIDE) (BETA CHAIN).

Mol	Chain	Residues	Atoms					ZeroOcc	AltConf	Trace
			Total	C	N	O	S			
2	B	146	1123	724	195	201	3	0	0	0

- Molecule 3 is PROTOPORPHYRIN IX CONTAINING FE (three-letter code: HEM) (formula: C₃₄H₃₂FeN₄O₄).



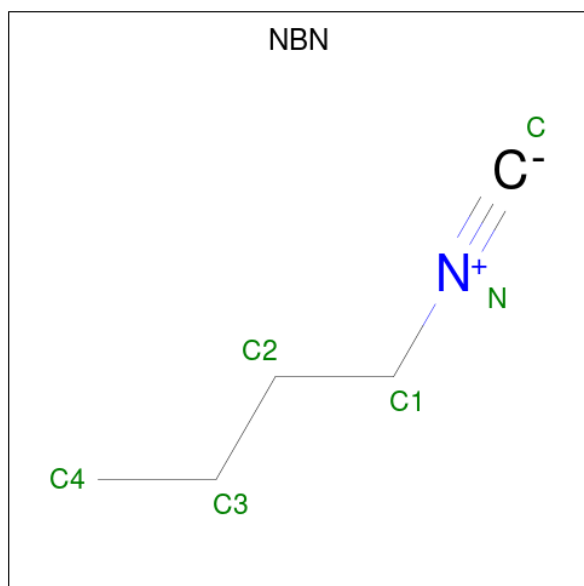
Mol	Chain	Residues	Atoms					ZeroOcc	AltConf
			Total	C	Fe	N	O		
3	A	1	43	34	1	4	4	0	0

Continued on next page...

Continued from previous page...

Mol	Chain	Residues	Atoms				ZeroOcc	AltConf	
			Total	C	Fe	N			O
3	B	1	43	34	1	4	4	0	0

- Molecule 4 is N-BUTYL ISOCYANIDE (three-letter code: NBN) (formula: C₅H₉N).



Mol	Chain	Residues	Atoms			ZeroOcc	AltConf
			Total	C	N		
4	A	1	6	5	1	0	0
4	B	1	6	5	1	0	0

- Molecule 5 is water.

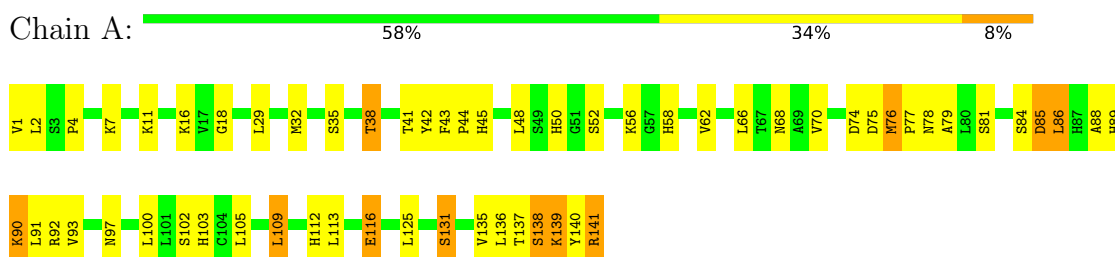
Mol	Chain	Residues	Atoms		ZeroOcc	AltConf
			Total	O		
5	A	28	28	28	0	0
5	B	37	37	37	0	0

3 Residue-property plots [i](#)

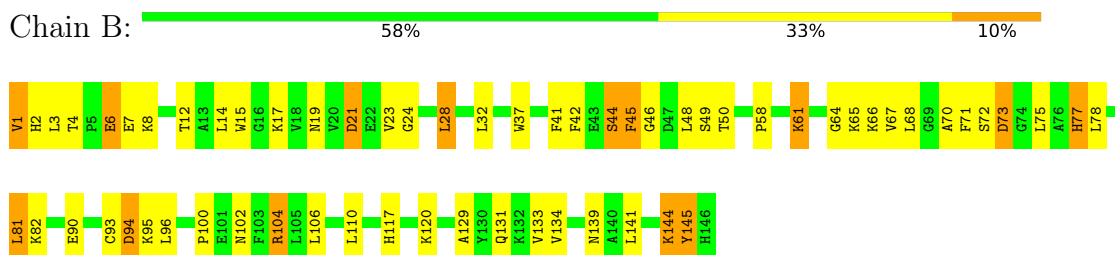
These plots are drawn for all protein, RNA, DNA and oligosaccharide chains in the entry. The first graphic for a chain summarises the proportions of the various outlier classes displayed in the second graphic. The second graphic shows the sequence view annotated by issues in geometry. Residues are color-coded according to the number of geometric quality criteria for which they contain at least one outlier: green = 0, yellow = 1, orange = 2 and red = 3 or more. Stretches of 2 or more consecutive residues without any outlier are shown as a green connector. Residues present in the sample, but not in the model, are shown in grey.

Note EDS was not executed.

- Molecule 1: HEMOGLOBIN A (N-BUTYL ISOCYANIDE) (ALPHA CHAIN)



- Molecule 2: HEMOGLOBIN A (N-BUTYL ISOCYANIDE) (BETA CHAIN)



4 Data and refinement statistics

Xtrriage (Phenix) and EDS were not executed - this section is therefore incomplete.

Property	Value	Source
Space group	P 41 21 2	Depositor
Cell constants a, b, c, α , β , γ	54.05Å 54.05Å 193.80Å 90.00° 90.00° 90.00°	Depositor
Resolution (Å)	5.00 – 2.00	Depositor
% Data completeness (in resolution range)	(Not available) (5.00-2.00)	Depositor
R_{merge}	(Not available)	Depositor
R_{sym}	(Not available)	Depositor
Refinement program	X-PLOR	Depositor
R, R_{free}	0.184 , (Not available)	Depositor
Estimated twinning fraction	No twinning to report.	Xtrriage
Total number of atoms	2355	wwPDB-VP
Average B, all atoms (Å ²)	36.0	wwPDB-VP

5 Model quality [i](#)

5.1 Standard geometry [i](#)

Bond lengths and bond angles in the following residue types are not validated in this section: NBN, HEM

The Z score for a bond length (or angle) is the number of standard deviations the observed value is removed from the expected value. A bond length (or angle) with $|Z| > 5$ is considered an outlier worth inspection. RMSZ is the root-mean-square of all Z scores of the bond lengths (or angles).

Mol	Chain	Bond lengths		Bond angles	
		RMSZ	# Z >5	RMSZ	# Z >5
1	A	0.84	0/1097	0.80	0/1491
2	B	0.83	0/1153	0.74	0/1566
All	All	0.84	0/2250	0.77	0/3057

Chiral center outliers are detected by calculating the chiral volume of a chiral center and verifying if the center is modelled as a planar moiety or with the opposite hand. A planarity outlier is detected by checking planarity of atoms in a peptide group, atoms in a mainchain group or atoms of a sidechain that are expected to be planar.

Mol	Chain	#Chirality outliers	#Planarity outliers
1	A	0	3
2	B	0	3
All	All	0	6

There are no bond length outliers.

There are no bond angle outliers.

There are no chirality outliers.

All (6) planarity outliers are listed below:

Mol	Chain	Res	Type	Group
1	A	102	SER	Mainchain
1	A	109	LEU	Mainchain
1	A	112	HIS	Sidechain
2	B	145	TYR	Mainchain,Sidechain
2	B	77	HIS	Sidechain

5.2 Too-close contacts

In the following table, the Non-H and H(model) columns list the number of non-hydrogen atoms and hydrogen atoms in the chain respectively. The H(added) column lists the number of hydrogen atoms added and optimized by MolProbity. The Clashes column lists the number of clashes within the asymmetric unit, whereas Symm-Clashes lists symmetry-related clashes.

Mol	Chain	Non-H	H(model)	H(added)	Clashes	Symm-Clashes
1	A	1069	0	1073	50	0
2	B	1123	0	1118	57	0
3	A	43	0	30	12	0
3	B	43	0	30	5	0
4	A	6	0	9	19	0
4	B	6	0	9	15	0
5	A	28	0	0	6	0
5	B	37	0	0	4	0
All	All	2355	0	2269	114	0

The all-atom clashscore is defined as the number of clashes found per 1000 atoms (including hydrogen atoms). The all-atom clashscore for this structure is 25.

All (114) close contacts within the same asymmetric unit are listed below, sorted by their clash magnitude.

Atom-1	Atom-2	Interatomic distance (Å)	Clash overlap (Å)
3:A:142:HEM:NA	4:A:143:NBN:C	2.18	1.06
2:B:58:PRO:HA	2:B:61:LYS:HE3	1.44	0.98
2:B:28:LEU:HG	4:B:148:NBN:H22	1.48	0.94
2:B:67:VAL:HG21	4:B:148:NBN:H21	1.51	0.90
2:B:67:VAL:HG11	4:B:148:NBN:H32	1.53	0.89
2:B:1:VAL:HG21	2:B:81:LEU:HD22	1.52	0.89
3:A:142:HEM:FE	4:A:143:NBN:C	1.59	0.84
1:A:141:ARG:HB2	5:A:214:HOH:O	1.80	0.81
1:A:139:LYS:HA	1:A:139:LYS:HE3	1.62	0.80
2:B:90:GLU:HG3	2:B:144:LYS:HD3	1.64	0.79
2:B:141:LEU:CD1	3:B:147:HEM:HAB	2.12	0.78
2:B:67:VAL:HG21	4:B:148:NBN:C2	2.14	0.78
3:A:142:HEM:ND	4:A:143:NBN:C	2.48	0.77
2:B:58:PRO:HA	2:B:61:LYS:CE	2.17	0.75
1:A:29:LEU:HD22	4:A:143:NBN:H31	1.69	0.73
2:B:106:LEU:HD21	4:B:148:NBN:H31	1.72	0.72
1:A:29:LEU:CD2	4:A:143:NBN:H31	2.21	0.71
1:A:58:HIS:HE2	4:A:143:NBN:C	2.04	0.70
1:A:76:MET:CE	1:A:131:SER:HB3	2.23	0.69

Continued on next page...

Continued from previous page...

Atom-1	Atom-2	Interatomic distance (Å)	Clash overlap (Å)
2:B:37:TRP:HE1	2:B:102:ASN:HD21	1.42	0.68
2:B:28:LEU:HG	4:B:148:NBN:C2	2.22	0.68
2:B:41:PHE:CD2	3:B:147:HEM:HBC1	2.31	0.66
2:B:44:SER:O	2:B:46:GLY:N	2.31	0.64
1:A:76:MET:HE3	1:A:131:SER:HB3	1.80	0.63
2:B:28:LEU:CG	4:B:148:NBN:H22	2.26	0.62
3:A:142:HEM:C1C	4:A:143:NBN:H21	2.34	0.62
2:B:4:THR:OG1	2:B:7:GLU:HG3	1.98	0.62
2:B:139:ASN:HB3	5:B:359:HOH:O	2.00	0.62
1:A:89:HIS:ND1	1:A:139:LYS:HG2	2.15	0.61
1:A:136:LEU:HD12	3:A:142:HEM:HAB	1.82	0.61
2:B:106:LEU:HD12	2:B:106:LEU:O	2.01	0.60
1:A:86:LEU:HD22	1:A:91:LEU:CD1	2.32	0.60
2:B:100:PRO:HB2	2:B:104:ARG:NH2	2.17	0.60
3:A:142:HEM:NB	4:A:143:NBN:C	2.65	0.59
2:B:67:VAL:HG11	4:B:148:NBN:C3	2.29	0.59
2:B:106:LEU:CD2	4:B:148:NBN:H31	2.33	0.59
1:A:38:THR:HB	5:A:362:HOH:O	2.04	0.58
1:A:75:ASP:OD2	1:A:78:ASN:HB3	2.04	0.57
1:A:137:THR:O	1:A:140:TYR:HB2	2.05	0.57
2:B:78:LEU:HA	2:B:81:LEU:HD13	1.84	0.57
2:B:141:LEU:HD12	3:B:147:HEM:HAB	1.87	0.56
2:B:141:LEU:HD11	3:B:147:HEM:HAB	1.88	0.56
2:B:58:PRO:CA	2:B:61:LYS:HE3	2.25	0.56
1:A:68:ASN:OD1	1:A:79:ALA:HB1	2.05	0.56
1:A:103:HIS:HE1	2:B:131:GLN:OE1	1.89	0.56
2:B:67:VAL:HG21	4:B:148:NBN:H32	1.88	0.55
2:B:96:LEU:HD23	2:B:96:LEU:N	2.21	0.54
1:A:77:PRO:O	1:A:81:SER:HB2	2.07	0.54
2:B:67:VAL:HG21	4:B:148:NBN:C3	2.37	0.54
1:A:76:MET:HE1	1:A:131:SER:HB3	1.90	0.54
1:A:90:LYS:HG3	1:A:91:LEU:N	2.21	0.54
1:A:52:SER:O	1:A:56:LYS:HD3	2.08	0.53
1:A:42:TYR:C	1:A:44:PRO:HD3	2.29	0.53
1:A:45:HIS:HE2	3:A:142:HEM:CGD	2.21	0.52
3:A:142:HEM:NC	4:A:143:NBN:H21	2.25	0.52
2:B:82:LYS:HD2	5:B:262:HOH:O	2.09	0.52
3:A:142:HEM:HBC2	4:A:143:NBN:C4	2.40	0.51
2:B:28:LEU:HG	4:B:148:NBN:H42	1.92	0.51
2:B:106:LEU:HD11	4:B:148:NBN:H41	1.92	0.51
1:A:85:ASP:O	1:A:89:HIS:HB3	2.11	0.50

Continued on next page...

Continued from previous page...

Atom-1	Atom-2	Interatomic distance (Å)	Clash overlap (Å)
2:B:90:GLU:HA	2:B:94:ASP:OD1	2.12	0.49
1:A:58:HIS:CD2	4:A:143:NBN:H12	2.47	0.49
2:B:67:VAL:CG1	4:B:148:NBN:H32	2.32	0.49
1:A:32:MET:HE3	4:A:143:NBN:C4	2.42	0.49
2:B:28:LEU:HG	4:B:148:NBN:C4	2.43	0.49
1:A:35:SER:HB3	2:B:131:GLN:HG3	1.96	0.48
1:A:58:HIS:NE2	4:A:143:NBN:N	2.50	0.48
1:A:86:LEU:HD22	1:A:91:LEU:HD11	1.96	0.48
1:A:45:HIS:NE2	3:A:142:HEM:O1D	2.46	0.47
1:A:103:HIS:HD2	5:A:169:HOH:O	1.97	0.47
2:B:129:ALA:O	2:B:133:VAL:HG23	2.14	0.47
1:A:113:LEU:HB3	1:A:116:GLU:HG2	1.97	0.46
1:A:116:GLU:N	1:A:116:GLU:CD	2.69	0.46
2:B:104:ARG:CZ	5:B:361:HOH:O	2.63	0.46
2:B:78:LEU:HA	2:B:81:LEU:CD1	2.45	0.46
1:A:38:THR:O	1:A:41:THR:HG23	2.16	0.46
1:A:32:MET:CE	4:A:143:NBN:H43	2.46	0.46
1:A:32:MET:CE	4:A:143:NBN:C4	2.95	0.45
1:A:88:ALA:HB1	1:A:139:LYS:HB3	1.99	0.45
3:A:142:HEM:C3C	4:A:143:NBN:H42	2.51	0.45
1:A:32:MET:HE3	4:A:143:NBN:H41	2.00	0.44
2:B:41:PHE:HD2	3:B:147:HEM:HBC1	1.81	0.44
1:A:66:LEU:O	1:A:70:VAL:HG23	2.17	0.44
1:A:116:GLU:N	1:A:116:GLU:OE2	2.51	0.44
1:A:86:LEU:HD22	1:A:91:LEU:HD12	1.99	0.43
2:B:75:LEU:HD23	2:B:75:LEU:HA	1.83	0.43
2:B:6:GLU:H	2:B:6:GLU:HG2	1.62	0.43
2:B:32:LEU:HD21	2:B:42:PHE:CD2	2.53	0.43
1:A:4:PRO:HD2	5:A:263:HOH:O	2.18	0.43
1:A:90:LYS:HG3	1:A:91:LEU:HG	2.01	0.43
3:A:142:HEM:NC	4:A:143:NBN:C	2.81	0.43
2:B:90:GLU:HG3	2:B:144:LYS:CD	2.40	0.43
2:B:68:LEU:HA	2:B:68:LEU:HD23	1.74	0.43
1:A:93:VAL:N	1:A:140:TYR:OH	2.52	0.43
2:B:44:SER:O	2:B:45:PHE:C	2.57	0.43
1:A:85:ASP:O	1:A:89:HIS:CB	2.66	0.42
1:A:62:VAL:CG2	4:A:143:NBN:H11	2.50	0.42
2:B:15:TRP:CH2	2:B:68:LEU:CD2	3.03	0.42
2:B:19:ASN:OD1	2:B:21:ASP:HB2	2.20	0.42
1:A:43:PHE:N	1:A:44:PRO:HD3	2.35	0.42
1:A:97:ASN:HD22	1:A:100:LEU:HD12	1.84	0.42

Continued on next page...

Continued from previous page...

Atom-1	Atom-2	Interatomic distance (Å)	Clash overlap (Å)
1:A:38:THR:CB	5:A:362:HOH:O	2.63	0.41
2:B:100:PRO:HG3	2:B:145:TYR:CD2	2.55	0.41
1:A:18:GLY:N	5:A:252:HOH:O	2.52	0.41
2:B:23:VAL:HG22	2:B:117:HIS:ND1	2.35	0.41
1:A:141:ARG:OXT	1:A:141:ARG:HG3	2.20	0.41
1:A:135:VAL:O	1:A:138:SER:OG	2.34	0.41
2:B:1:VAL:CG2	2:B:81:LEU:HD22	2.38	0.41
2:B:15:TRP:CH2	2:B:68:LEU:HD22	2.56	0.41
2:B:24:GLY:O	2:B:64:GLY:HA3	2.20	0.41
2:B:46:GLY:O	2:B:48:LEU:HG	2.21	0.41
2:B:70:ALA:O	2:B:73:ASP:HB2	2.21	0.41
2:B:93:CYS:HB3	5:B:188:HOH:O	2.22	0.40
2:B:42:PHE:O	2:B:45:PHE:HB2	2.21	0.40

There are no symmetry-related clashes.

5.3 Torsion angles [i](#)

5.3.1 Protein backbone [i](#)

In the following table, the Percentiles column shows the percent Ramachandran outliers of the chain as a percentile score with respect to all X-ray entries followed by that with respect to entries of similar resolution.

The Analysed column shows the number of residues for which the backbone conformation was analysed, and the total number of residues.

Mol	Chain	Analysed	Favoured	Allowed	Outliers	Percentiles	
1	A	139/141 (99%)	132 (95%)	5 (4%)	2 (1%)	11	5
2	B	144/146 (99%)	131 (91%)	10 (7%)	3 (2%)	7	2
All	All	283/287 (99%)	263 (93%)	15 (5%)	5 (2%)	8	3

All (5) Ramachandran outliers are listed below:

Mol	Chain	Res	Type
1	A	2	LEU
2	B	3	LEU
2	B	45	PHE
2	B	44	SER
1	A	50	HIS

5.3.2 Protein sidechains [i](#)

In the following table, the Percentiles column shows the percent sidechain outliers of the chain as a percentile score with respect to all X-ray entries followed by that with respect to entries of similar resolution.

The Analysed column shows the number of residues for which the sidechain conformation was analysed, and the total number of residues.

Mol	Chain	Analysed	Rotameric	Outliers	Percentiles	
1	A	113/113 (100%)	92 (81%)	21 (19%)	1	0
2	B	118/118 (100%)	92 (78%)	26 (22%)	1	0
All	All	231/231 (100%)	184 (80%)	47 (20%)	1	0

All (47) residues with a non-rotameric sidechain are listed below:

Mol	Chain	Res	Type
1	A	1	VAL
1	A	7	LYS
1	A	11	LYS
1	A	16	LYS
1	A	38	THR
1	A	48	LEU
1	A	74	ASP
1	A	76	MET
1	A	84	SER
1	A	85	ASP
1	A	86	LEU
1	A	90	LYS
1	A	92	ARG
1	A	105	LEU
1	A	109	LEU
1	A	116	GLU
1	A	125	LEU
1	A	131	SER
1	A	138	SER
1	A	139	LYS
1	A	141	ARG
2	B	1	VAL
2	B	2	HIS
2	B	6	GLU
2	B	8	LYS
2	B	12	THR
2	B	14	LEU

Continued on next page...

Continued from previous page...

Mol	Chain	Res	Type
2	B	17	LYS
2	B	21	ASP
2	B	28	LEU
2	B	49	SER
2	B	50	THR
2	B	61	LYS
2	B	65	LYS
2	B	66	LYS
2	B	71	PHE
2	B	72	SER
2	B	73	ASP
2	B	77	HIS
2	B	81	LEU
2	B	94	ASP
2	B	95	LYS
2	B	104	ARG
2	B	110	LEU
2	B	120	LYS
2	B	134	VAL
2	B	144	LYS

Sometimes sidechains can be flipped to improve hydrogen bonding and reduce clashes. All (6) such sidechains are listed below:

Mol	Chain	Res	Type
1	A	9	ASN
1	A	97	ASN
1	A	103	HIS
2	B	2	HIS
2	B	102	ASN
2	B	108	ASN

5.3.3 RNA [i](#)

There are no RNA molecules in this entry.

5.4 Non-standard residues in protein, DNA, RNA chains [i](#)

There are no non-standard protein/DNA/RNA residues in this entry.

5.5 Carbohydrates [i](#)

There are no monosaccharides in this entry.

5.6 Ligand geometry [i](#)

4 ligands are modelled in this entry.

In the following table, the Counts columns list the number of bonds (or angles) for which Mogul statistics could be retrieved, the number of bonds (or angles) that are observed in the model and the number of bonds (or angles) that are defined in the Chemical Component Dictionary. The Link column lists molecule types, if any, to which the group is linked. The Z score for a bond length (or angle) is the number of standard deviations the observed value is removed from the expected value. A bond length (or angle) with $|Z| > 2$ is considered an outlier worth inspection. RMSZ is the root-mean-square of all Z scores of the bond lengths (or angles).

Mol	Type	Chain	Res	Link	Bond lengths			Bond angles		
					Counts	RMSZ	# Z > 2	Counts	RMSZ	# Z > 2
3	HEM	A	142	1,4	41,50,50	2.23	15 (36%)	45,82,82	1.89	9 (20%)
4	NBN	B	148	-	4,5,5	1.89	1 (25%)	3,4,4	0.48	0
4	NBN	A	143	3	4,5,5	3.19	1 (25%)	3,4,4	0.60	0
3	HEM	B	147	2	41,50,50	1.72	12 (29%)	45,82,82	2.56	9 (20%)

In the following table, the Chirals column lists the number of chiral outliers, the number of chiral centers analysed, the number of these observed in the model and the number defined in the Chemical Component Dictionary. Similar counts are reported in the Torsion and Rings columns. '-' means no outliers of that kind were identified.

Mol	Type	Chain	Res	Link	Chirals	Torsions	Rings
3	HEM	A	142	1,4	-	4/12/54/54	-
4	NBN	B	148	-	-	2/2/3/3	-
4	NBN	A	143	3	-	2/2/3/3	-
3	HEM	B	147	2	-	3/12/54/54	-

All (29) bond length outliers are listed below:

Mol	Chain	Res	Type	Atoms	Z	Observed(Å)	Ideal(Å)
4	A	143	NBN	C1-N	-6.35	1.29	1.45
3	A	142	HEM	C4A-NA	5.37	1.47	1.36
3	A	142	HEM	C1B-NB	4.57	1.48	1.40
3	A	142	HEM	C3C-C2C	-4.28	1.34	1.40
3	A	142	HEM	C3B-C4B	4.03	1.52	1.44
3	A	142	HEM	CAB-C3B	-3.91	1.36	1.47

Continued on next page...

Continued from previous page...

Mol	Chain	Res	Type	Atoms	Z	Observed(Å)	Ideal(Å)
3	A	142	HEM	C3C-CAC	-3.76	1.40	1.47
4	B	148	NBN	C1-N	-3.75	1.35	1.45
3	B	147	HEM	C3B-C4B	3.46	1.51	1.44
3	B	147	HEM	CBB-CAB	3.18	1.46	1.30
3	A	142	HEM	CBB-CAB	3.07	1.45	1.30
3	B	147	HEM	C4A-NA	3.06	1.42	1.36
3	A	142	HEM	CHB-C1B	3.00	1.42	1.35
3	B	147	HEM	C3B-C2B	2.98	1.43	1.37
3	A	142	HEM	CHA-C4D	2.84	1.42	1.35
3	A	142	HEM	C4D-C3D	2.80	1.49	1.45
3	A	142	HEM	C1D-ND	2.77	1.44	1.38
3	B	147	HEM	C4B-NB	2.70	1.44	1.38
3	A	142	HEM	CHC-C4B	-2.62	1.33	1.41
3	B	147	HEM	C2C-C1C	2.45	1.48	1.42
3	A	142	HEM	C4B-NB	-2.42	1.33	1.38
3	A	142	HEM	C1A-CHA	-2.42	1.34	1.41
3	A	142	HEM	C1B-C2B	2.39	1.49	1.44
3	B	147	HEM	CAA-C2A	-2.36	1.48	1.52
3	B	147	HEM	CBD-CGD	2.32	1.56	1.50
3	B	147	HEM	CAD-C3D	2.29	1.57	1.51
3	B	147	HEM	CMD-C2D	2.27	1.55	1.50
3	B	147	HEM	C3C-CAC	-2.26	1.43	1.47
3	B	147	HEM	C3C-C2C	-2.25	1.37	1.40

All (18) bond angle outliers are listed below:

Mol	Chain	Res	Type	Atoms	Z	Observed(°)	Ideal(°)
3	B	147	HEM	C4B-C3B-C2B	-9.92	99.24	107.11
3	B	147	HEM	C3B-C2B-C1B	7.51	112.06	106.49
3	B	147	HEM	C4B-CHC-C1C	6.02	130.50	122.56
3	A	142	HEM	CMA-C3A-C4A	-5.73	119.66	128.46
3	A	142	HEM	C4B-CHC-C1C	5.10	129.28	122.56
3	A	142	HEM	CMA-C3A-C2A	4.77	133.93	124.94
3	B	147	HEM	C4A-C3A-C2A	-4.03	104.19	107.00
3	B	147	HEM	C2C-C3C-C4C	-3.84	104.22	106.90
3	A	142	HEM	CBA-CAA-C2A	-3.27	107.04	112.62
3	B	147	HEM	CMD-C2D-C1D	3.09	129.74	125.04
3	B	147	HEM	CMC-C2C-C3C	2.86	130.04	124.68
3	B	147	HEM	CBB-CAB-C3B	2.81	141.58	127.62
3	B	147	HEM	CBD-CAD-C3D	2.74	120.25	112.63
3	A	142	HEM	C3B-C2B-C1B	-2.45	104.67	106.49
3	A	142	HEM	CHC-C4B-NB	-2.44	121.78	124.43

Continued on next page...

Continued from previous page...

Mol	Chain	Res	Type	Atoms	Z	Observed(°)	Ideal(°)
3	A	142	HEM	CAB-C3B-C2B	-2.39	120.72	128.60
3	A	142	HEM	C4A-C3A-C2A	-2.27	105.42	107.00
3	A	142	HEM	C2C-C3C-C4C	-2.24	105.33	106.90

There are no chirality outliers.

All (11) torsion outliers are listed below:

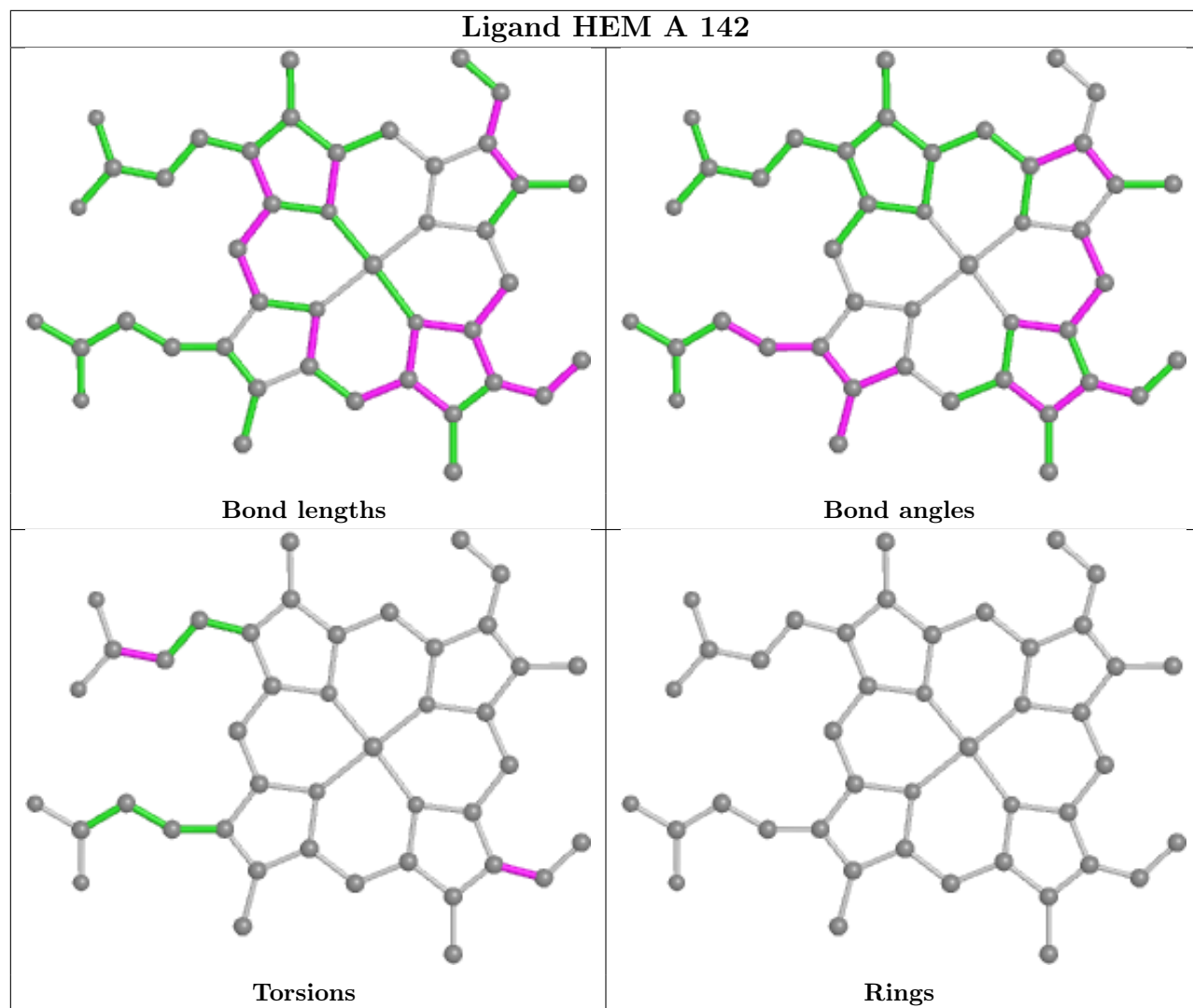
Mol	Chain	Res	Type	Atoms
3	A	142	HEM	C2B-C3B-CAB-CBB
3	B	147	HEM	C4B-C3B-CAB-CBB
4	A	143	NBN	N-C1-C2-C3
4	B	148	NBN	N-C1-C2-C3
4	B	148	NBN	C1-C2-C3-C4
3	A	142	HEM	C4B-C3B-CAB-CBB
4	A	143	NBN	C1-C2-C3-C4
3	A	142	HEM	CAD-CBD-CGD-O2D
3	B	147	HEM	CAA-CBA-CGA-O1A
3	B	147	HEM	CAA-CBA-CGA-O2A
3	A	142	HEM	CAD-CBD-CGD-O1D

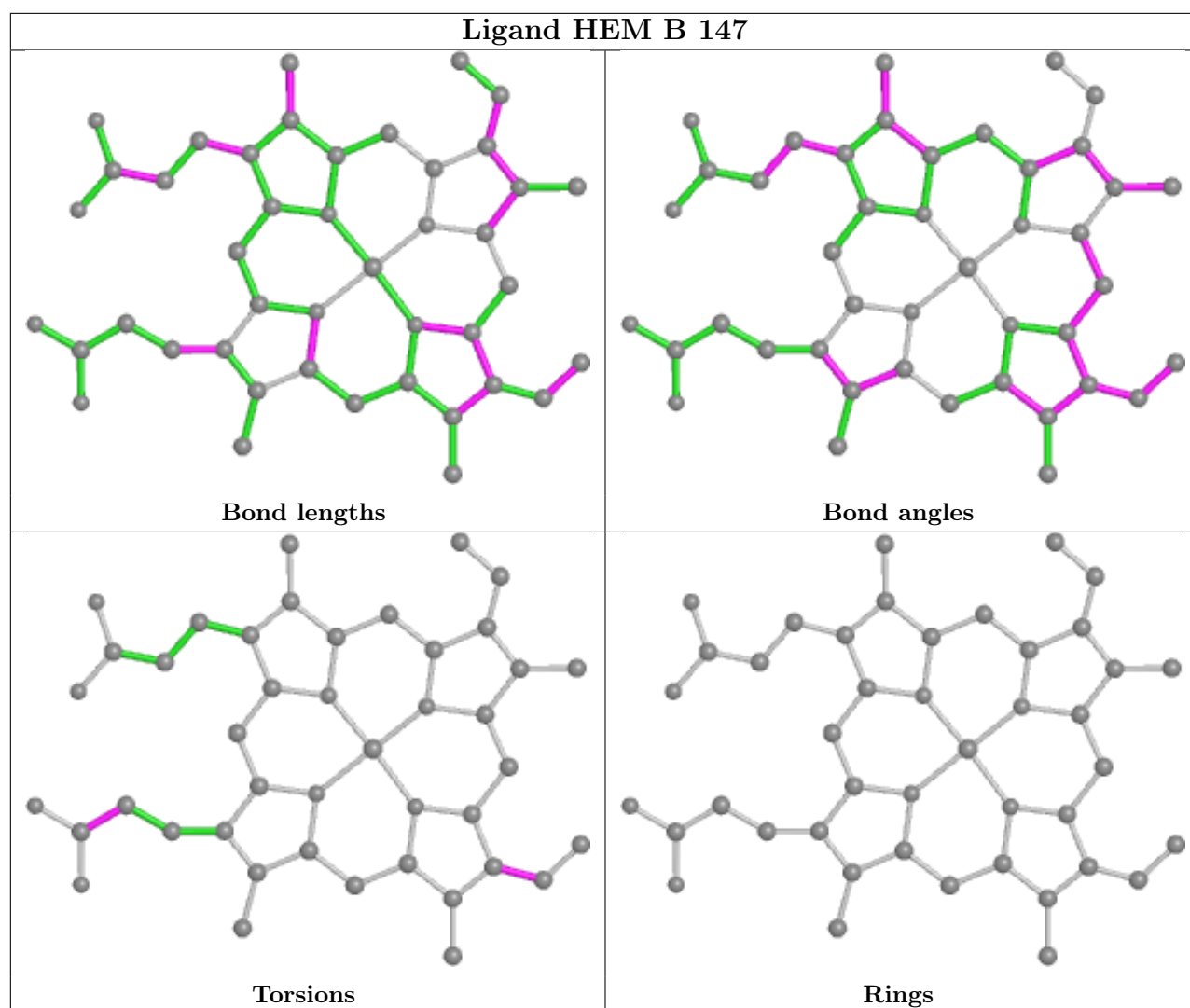
There are no ring outliers.

4 monomers are involved in 42 short contacts:

Mol	Chain	Res	Type	Clashes	Symm-Clashes
3	A	142	HEM	12	0
4	B	148	NBN	15	0
4	A	143	NBN	19	0
3	B	147	HEM	5	0

The following is a two-dimensional graphical depiction of Mogul quality analysis of bond lengths, bond angles, torsion angles, and ring geometry for all instances of the Ligand of Interest. In addition, ligands with molecular weight > 250 and outliers as shown on the validation Tables will also be included. For torsion angles, if less than 5% of the Mogul distribution of torsion angles is within 10 degrees of the torsion angle in question, then that torsion angle is considered an outlier. Any bond that is central to one or more torsion angles identified as an outlier by Mogul will be highlighted in the graph. For rings, the root-mean-square deviation (RMSD) between the ring in question and similar rings identified by Mogul is calculated over all ring torsion angles. If the average RMSD is greater than 60 degrees and the minimal RMSD between the ring in question and any Mogul-identified rings is also greater than 60 degrees, then that ring is considered an outlier. The outliers are highlighted in purple. The color gray indicates Mogul did not find sufficient equivalents in the CSD to analyse the geometry.





5.7 Other polymers [i](#)

There are no such residues in this entry.

5.8 Polymer linkage issues [i](#)

There are no chain breaks in this entry.

6 Fit of model and data

6.1 Protein, DNA and RNA chains

EDS was not executed - this section is therefore empty.

6.2 Non-standard residues in protein, DNA, RNA chains

EDS was not executed - this section is therefore empty.

6.3 Carbohydrates

EDS was not executed - this section is therefore empty.

6.4 Ligands

EDS was not executed - this section is therefore empty.

6.5 Other polymers

EDS was not executed - this section is therefore empty.