



Full wwPDB X-ray Structure Validation Report ⓘ

Oct 23, 2023 – 06:39 AM EDT

PDB ID : 3BDA
Title : Glycogen Phosphorylase complex with 1(-D-glucopyranosyl) cyanuric acid
Authors : Sovantzis, D.A.; Hadjiloi, T.; Hayes, J.M.; Zographos, S.E.; Chrysina, E.D.; Oikonomakos, N.G.
Deposited on : 2007-11-14
Resolution : 2.00 Å(reported)

This is a Full wwPDB X-ray Structure Validation Report for a publicly released PDB entry.

We welcome your comments at validation@mail.wwpdb.org

A user guide is available at

<https://www.wwpdb.org/validation/2017/XrayValidationReportHelp>

with specific help available everywhere you see the ⓘ symbol.

The types of validation reports are described at

<http://www.wwpdb.org/validation/2017/FAQs#types>.

The following versions of software and data (see [references ⓘ](#)) were used in the production of this report:

MolProbity : 4.02b-467
Mogul : 1.8.5 (274361), CSD as541be (2020)
Xtrriage (Phenix) : 1.13
EDS : 2.36
buster-report : 1.1.7 (2018)
Percentile statistics : 20191225.v01 (using entries in the PDB archive December 25th 2019)
Refmac : 5.8.0158
CCP4 : 7.0.044 (Gargrove)
Ideal geometry (proteins) : Engh & Huber (2001)
Ideal geometry (DNA, RNA) : Parkinson et al. (1996)
Validation Pipeline (wwPDB-VP) : 2.36

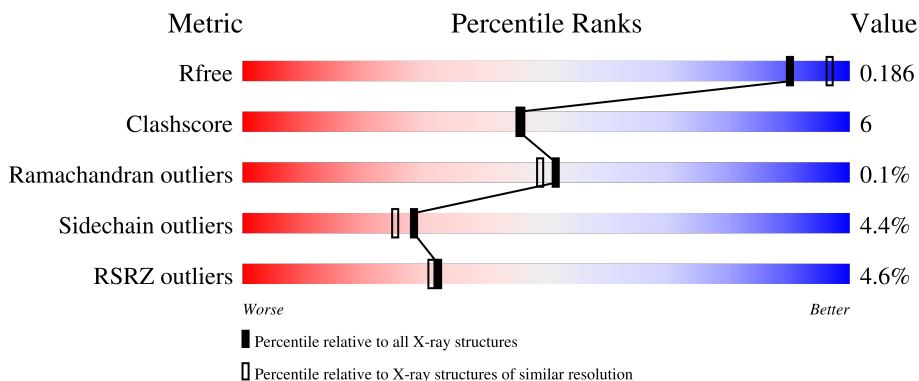
1 Overall quality at a glance

The following experimental techniques were used to determine the structure:

X-RAY DIFFRACTION


The reported resolution of this entry is 2.00 Å.

Percentile scores (ranging between 0-100) for global validation metrics of the entry are shown in the following graphic. The table shows the number of entries on which the scores are based.



Metric	Whole archive (#Entries)	Similar resolution (#Entries, resolution range(Å))
R_{free}	130704	8085 (2.00-2.00)
Clashscore	141614	9178 (2.00-2.00)
Ramachandran outliers	138981	9054 (2.00-2.00)
Sidechain outliers	138945	9053 (2.00-2.00)
RSRZ outliers	127900	7900 (2.00-2.00)

The table below summarises the geometric issues observed across the polymeric chains and their fit to the electron density. The red, orange, yellow and green segments of the lower bar indicate the fraction of residues that contain outliers for ≥ 3 , 2, 1 and 0 types of geometric quality criteria respectively. A grey segment represents the fraction of residues that are not modelled. The numeric value for each fraction is indicated below the corresponding segment, with a dot representing fractions $\leq 5\%$. The upper red bar (where present) indicates the fraction of residues that have poor fit to the electron density. The numeric value is given above the bar.

Mol	Chain	Length	Quality of chain
1	A	842	

The following table lists non-polymeric compounds, carbohydrate monomers and non-standard residues in protein, DNA, RNA chains that are outliers for geometric or electron-density-fit criteria:

Mol	Type	Chain	Res	Chirality	Geometry	Clashes	Electron density
3	C4B	A	940	-	-	-	X

2 Entry composition [i](#)

There are 4 unique types of molecules in this entry. The entry contains 6995 atoms, of which 0 are hydrogens and 0 are deuteriums.

In the tables below, the ZeroOcc column contains the number of atoms modelled with zero occupancy, the AltConf column contains the number of residues with at least one atom in alternate conformation and the Trace column contains the number of residues modelled with at most 2 atoms.

- Molecule 1 is a protein called Glycogen phosphorylase, muscle form.

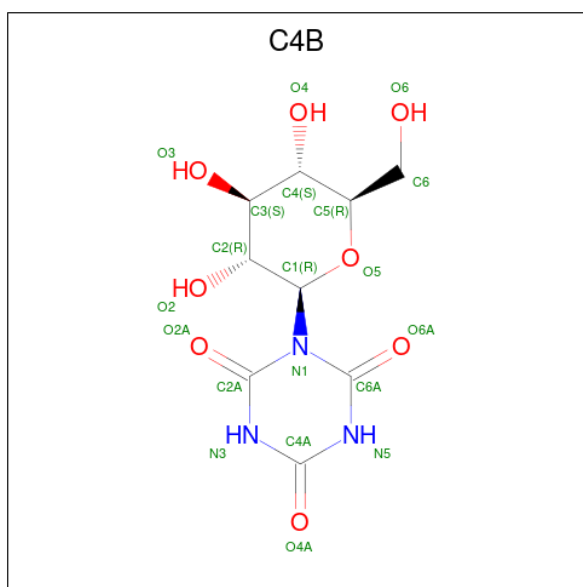
Mol	Chain	Residues	Atoms					ZeroOcc	AltConf	Trace
			Total	C	N	O	S			
1	A	810	6589	4201	1160	1199	29	0	0	0

- Molecule 2 is PYRIDOXAL-5'-PHOSPHATE (three-letter code: PLP) (formula: C₈H₁₀NO₆P).



Mol	Chain	Residues	Atoms					ZeroOcc	AltConf
			Total	C	N	O	P		
2	A	1	15	8	1	5	1	0	0

- Molecule 3 is 1-beta-D-glucopyranosyl-1,3,5-triazinane-2,4,6-trione (three-letter code: C4B) (formula: C₉H₁₃N₃O₈).



Mol	Chain	Residues	Atoms				ZeroOcc	AltConf
			Total	C	N	O		
3	A	1	20	9	3	8	0	0
3	A	1	20	9	3	8	0	0

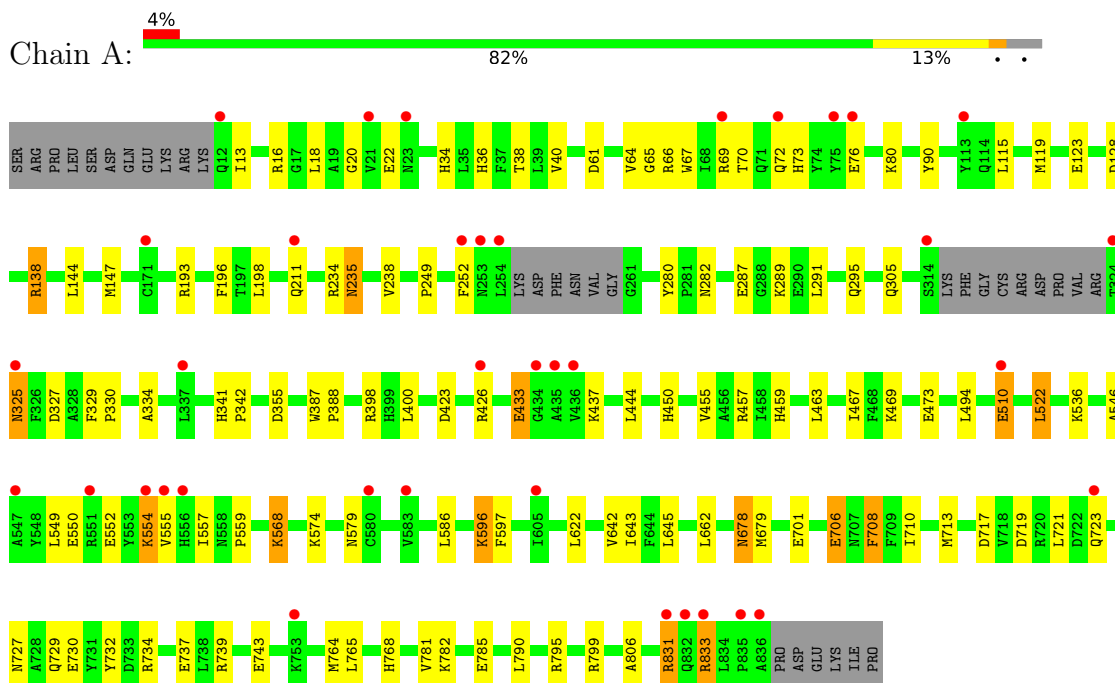
- Molecule 4 is water.

Mol	Chain	Residues	Atoms		ZeroOcc	AltConf
			Total	O		
4	A	351	351	351	0	0

3 Residue-property plots [i](#)

These plots are drawn for all protein, RNA, DNA and oligosaccharide chains in the entry. The first graphic for a chain summarises the proportions of the various outlier classes displayed in the second graphic. The second graphic shows the sequence view annotated by issues in geometry and electron density. Residues are color-coded according to the number of geometric quality criteria for which they contain at least one outlier: green = 0, yellow = 1, orange = 2 and red = 3 or more. A red dot above a residue indicates a poor fit to the electron density ($RSRZ > 2$). Stretches of 2 or more consecutive residues without any outlier are shown as a green connector. Residues present in the sample, but not in the model, are shown in grey.

- Molecule 1: Glycogen phosphorylase, muscle form



4 Data and refinement statistics

Property	Value	Source
Space group	P 43 21 2	Depositor
Cell constants a, b, c, α , β , γ	128.59Å 128.59Å 116.21Å 90.00° 90.00° 90.00°	Depositor
Resolution (Å)	29.49 – 2.00 29.49 – 2.00	Depositor EDS
% Data completeness (in resolution range)	93.9 (29.49-2.00) 98.9 (29.49-2.00)	Depositor EDS
R_{merge}	(Not available)	Depositor
R_{sym}	0.10	Depositor
$\langle I/\sigma(I) \rangle$ ¹	3.45 (at 2.00Å)	Xtrriage
Refinement program	CNS	Depositor
R, R_{free}	0.185 , 0.210 0.182 , 0.186	Depositor DCC
R_{free} test set	3344 reflections (5.08%)	wwPDB-VP
Wilson B-factor (Å ²)	26.2	Xtrriage
Anisotropy	0.316	Xtrriage
Bulk solvent k_{sol} (e/Å ³), B_{sol} (Å ²)	0.34 , 55.1	EDS
L-test for twinning ²	$\langle L \rangle = 0.50$, $\langle L^2 \rangle = 0.34$	Xtrriage
Estimated twinning fraction	No twinning to report.	Xtrriage
F_o, F_c correlation	0.96	EDS
Total number of atoms	6995	wwPDB-VP
Average B, all atoms (Å ²)	30.0	wwPDB-VP

Xtrriage's analysis on translational NCS is as follows: *The largest off-origin peak in the Patterson function is 2.95% of the height of the origin peak. No significant pseudotranslation is detected.*

¹Intensities estimated from amplitudes.

²Theoretical values of $\langle |L| \rangle$, $\langle L^2 \rangle$ for acentric reflections are 0.5, 0.333 respectively for untwinned datasets, and 0.375, 0.2 for perfectly twinned datasets.

5 Model quality [i](#)

5.1 Standard geometry [i](#)

Bond lengths and bond angles in the following residue types are not validated in this section: C4B, PLP

The Z score for a bond length (or angle) is the number of standard deviations the observed value is removed from the expected value. A bond length (or angle) with $|Z| > 5$ is considered an outlier worth inspection. RMSZ is the root-mean-square of all Z scores of the bond lengths (or angles).

Mol	Chain	Bond lengths		Bond angles	
		RMSZ	# Z >5	RMSZ	# Z >5
1	A	0.31	0/6736	0.58	0/9116

There are no bond length outliers.

There are no bond angle outliers.

There are no chirality outliers.

There are no planarity outliers.

5.2 Too-close contacts [i](#)

In the following table, the Non-H and H(model) columns list the number of non-hydrogen atoms and hydrogen atoms in the chain respectively. The H(added) column lists the number of hydrogen atoms added and optimized by MolProbity. The Clashes column lists the number of clashes within the asymmetric unit, whereas Symm-Clashes lists symmetry-related clashes.

Mol	Chain	Non-H	H(model)	H(added)	Clashes	Symm-Clashes
1	A	6589	0	6533	84	0
2	A	15	0	7	0	0
3	A	40	0	0	0	0
4	A	351	0	0	11	0
All	All	6995	0	6540	84	0

The all-atom clashscore is defined as the number of clashes found per 1000 atoms (including hydrogen atoms). The all-atom clashscore for this structure is 6.

All (84) close contacts within the same asymmetric unit are listed below, sorted by their clash magnitude.

Atom-1	Atom-2	Interatomic distance (Å)	Clash overlap (Å)
1:A:138:ARG:O	1:A:138:ARG:HD3	1.85	0.77
1:A:455:VAL:H	1:A:459:HIS:HD2	1.34	0.75
1:A:708:PHE:HB3	1:A:710:ILE:HD11	1.69	0.74
1:A:708:PHE:HB3	1:A:710:ILE:CD1	2.18	0.73
1:A:235:ASN:HA	1:A:833:ARG:HG3	1.71	0.71
1:A:549:LEU:HD12	1:A:557:ILE:HD13	1.71	0.71
1:A:678:ASN:HD22	1:A:679:MET:H	1.40	0.68
1:A:355:ASP:OD1	1:A:398:ARG:HD3	1.95	0.65
1:A:463:LEU:CD2	1:A:467:ILE:HD11	2.27	0.65
1:A:61:ASP:O	1:A:64:VAL:HG22	1.97	0.64
1:A:196:PHE:O	1:A:198:LEU:HD13	1.99	0.63
1:A:325:ASN:HD21	1:A:327:ASP:HB2	1.64	0.63
1:A:34:HIS:HD2	1:A:38:THR:OG1	1.83	0.62
1:A:730:GLU:O	1:A:734:ARG:HG3	1.99	0.62
1:A:433:GLU:OE1	1:A:437:LYS:HD2	2.02	0.58
1:A:550:GLU:O	1:A:554:LYS:HD3	2.05	0.57
1:A:568:LYS:HG3	1:A:574:LYS:HD3	1.87	0.57
1:A:329:PHE:HB3	1:A:330:PRO:HD3	1.88	0.56
1:A:739:ARG:O	1:A:743:GLU:HG3	2.06	0.56
1:A:423:ASP:O	1:A:426:ARG:HG3	2.05	0.56
1:A:65:GLY:O	1:A:69:ARG:HG2	2.05	0.56
1:A:235:ASN:H	1:A:235:ASN:HD22	1.53	0.56
1:A:549:LEU:HB3	1:A:555:VAL:HG23	1.89	0.54
1:A:678:ASN:HD22	1:A:678:ASN:N	2.06	0.54
1:A:831:ARG:HA	1:A:831:ARG:HE	1.72	0.54
1:A:546:ALA:HA	1:A:557:ILE:HD11	1.89	0.53
1:A:423:ASP:HB2	4:A:1224:HOH:O	2.07	0.53
1:A:719:ASP:O	1:A:723:GLN:HG3	2.09	0.53
1:A:18:LEU:N	1:A:18:LEU:HD22	2.25	0.52
1:A:678:ASN:HD22	1:A:679:MET:N	2.07	0.51
1:A:469:LYS:O	1:A:473:GLU:HG3	2.11	0.51
1:A:144:LEU:HD23	1:A:147:MET:CE	2.41	0.51
1:A:34:HIS:HE1	1:A:61:ASP:OD1	1.95	0.50
1:A:678:ASN:ND2	1:A:679:MET:H	2.08	0.50
1:A:708:PHE:HB3	1:A:710:ILE:HD12	1.93	0.49
1:A:287:GLU:HG2	1:A:289:LYS:HG2	1.93	0.49
1:A:536:LYS:HB3	1:A:536:LYS:NZ	2.27	0.49
1:A:66:ARG:HG3	4:A:1315:HOH:O	2.12	0.49
1:A:781:VAL:O	1:A:785:GLU:HG3	2.13	0.49
1:A:706:GLU:H	1:A:706:GLU:CD	2.17	0.49
1:A:642:VAL:C	1:A:643:ILE:HD12	2.34	0.48
1:A:64:VAL:HG23	1:A:65:GLY:N	2.28	0.48

Continued on next page...

Continued from previous page...

Atom-1	Atom-2	Interatomic distance (Å)	Clash overlap (Å)
1:A:463:LEU:HD22	1:A:467:ILE:HD11	1.94	0.48
1:A:138:ARG:HD3	1:A:138:ARG:C	2.34	0.47
1:A:557:ILE:O	1:A:559:PRO:HD3	2.14	0.47
1:A:457:ARG:HH12	1:A:701:GLU:CD	2.18	0.47
1:A:795:ARG:O	1:A:799:ARG:HG3	2.15	0.47
1:A:341:HIS:HB2	1:A:342:PRO:HD3	1.96	0.46
1:A:72:GLN:O	1:A:76:GLU:HG2	2.15	0.46
1:A:596:LYS:HD3	1:A:597:PHE:O	2.16	0.46
1:A:522:LEU:HD13	1:A:806:ALA:CB	2.45	0.46
1:A:549:LEU:HD12	1:A:557:ILE:CD1	2.44	0.45
1:A:235:ASN:HD22	1:A:235:ASN:N	2.12	0.45
1:A:282:ASN:HB2	4:A:1208:HOH:O	2.16	0.45
1:A:732:TYR:CZ	1:A:739:ARG:HG3	2.51	0.45
1:A:69:ARG:HG3	4:A:1318:HOH:O	2.17	0.44
1:A:280:TYR:OH	1:A:291:LEU:HB3	2.18	0.44
1:A:291:LEU:O	1:A:295:GLN:HG3	2.18	0.44
1:A:198:LEU:HD23	1:A:305:GLN:HB2	1.99	0.44
1:A:36:HIS:O	1:A:40:VAL:HA	2.18	0.43
1:A:450:HIS:HD2	4:A:1258:HOH:O	2.00	0.43
1:A:494:LEU:C	1:A:494:LEU:HD23	2.38	0.43
1:A:710:ILE:HD12	1:A:710:ILE:N	2.33	0.43
1:A:727:ASN:OD1	1:A:729:GLN:HB3	2.19	0.43
1:A:235:ASN:H	1:A:235:ASN:ND2	2.16	0.43
1:A:455:VAL:H	1:A:459:HIS:CD2	2.23	0.43
1:A:678:ASN:N	1:A:678:ASN:ND2	2.65	0.43
1:A:20:GLY:HA3	4:A:1312:HOH:O	2.19	0.43
1:A:249:PRO:O	1:A:252:PHE:HB2	2.18	0.42
1:A:568:LYS:HE2	4:A:1033:HOH:O	2.20	0.42
1:A:67:TRP:HA	1:A:238:VAL:HB	2.01	0.42
1:A:450:HIS:HE1	4:A:1150:HOH:O	2.02	0.42
1:A:13:ILE:HD11	1:A:16:ARG:HG3	2.02	0.42
1:A:193:ARG:HB3	1:A:196:PHE:HD2	1.84	0.42
1:A:119:MET:O	1:A:123:GLU:HG3	2.20	0.42
1:A:737:GLU:HG3	4:A:1169:HOH:O	2.20	0.42
1:A:510:GLU:HB2	4:A:1175:HOH:O	2.19	0.41
1:A:713:MET:HB3	1:A:717:ASP:HB2	2.01	0.41
1:A:34:HIS:O	1:A:38:THR:HB	2.19	0.41
1:A:70:THR:O	1:A:73:HIS:HB3	2.20	0.41
1:A:138:ARG:HB3	4:A:1131:HOH:O	2.19	0.41
1:A:764:MET:HA	1:A:768:HIS:CE1	2.56	0.41
1:A:80:LYS:HE2	1:A:334:ALA:HB2	2.03	0.41

Continued on next page...

Continued from previous page...

Atom-1	Atom-2	Interatomic distance (Å)	Clash overlap (Å)
1:A:387:TRP:HA	1:A:388:PRO:HD3	1.92	0.40

There are no symmetry-related clashes.

5.3 Torsion angles [i](#)

5.3.1 Protein backbone [i](#)

In the following table, the Percentiles column shows the percent Ramachandran outliers of the chain as a percentile score with respect to all X-ray entries followed by that with respect to entries of similar resolution.

The Analysed column shows the number of residues for which the backbone conformation was analysed, and the total number of residues.

Mol	Chain	Analysed	Favoured	Allowed	Outliers	Percentiles
1	A	804/842 (96%)	775 (96%)	28 (4%)	1 (0%)	51 49

All (1) Ramachandran outliers are listed below:

Mol	Chain	Res	Type
1	A	554	LYS

5.3.2 Protein sidechains [i](#)

In the following table, the Percentiles column shows the percent sidechain outliers of the chain as a percentile score with respect to all X-ray entries followed by that with respect to entries of similar resolution.

The Analysed column shows the number of residues for which the sidechain conformation was analysed, and the total number of residues.

Mol	Chain	Analysed	Rotameric	Outliers	Percentiles
1	A	701/731 (96%)	670 (96%)	31 (4%)	28 25

All (31) residues with a non-rotameric sidechain are listed below:

Mol	Chain	Res	Type
1	A	22	GLU
1	A	90	TYR

Continued on next page...

Continued from previous page...

Mol	Chain	Res	Type
1	A	115	LEU
1	A	128	ASP
1	A	138	ARG
1	A	211	GLN
1	A	234	ARG
1	A	235	ASN
1	A	325	ASN
1	A	400	LEU
1	A	433	GLU
1	A	444	LEU
1	A	510	GLU
1	A	522	LEU
1	A	552	GLU
1	A	568	LYS
1	A	579	ASN
1	A	586	LEU
1	A	596	LYS
1	A	622	LEU
1	A	645	LEU
1	A	662	LEU
1	A	678	ASN
1	A	706	GLU
1	A	708	PHE
1	A	721	LEU
1	A	765	LEU
1	A	782	LYS
1	A	790	LEU
1	A	831	ARG
1	A	833	ARG

Sometimes sidechains can be flipped to improve hydrogen bonding and reduce clashes. All (19) such sidechains are listed below:

Mol	Chain	Res	Type
1	A	34	HIS
1	A	211	GLN
1	A	235	ASN
1	A	264	GLN
1	A	270	ASN
1	A	325	ASN
1	A	412	ASN
1	A	450	HIS
1	A	459	HIS

Continued on next page...

Continued from previous page...

Mol	Chain	Res	Type
1	A	481	ASN
1	A	484	ASN
1	A	539	GLN
1	A	556	HIS
1	A	560	ASN
1	A	566	GLN
1	A	579	ASN
1	A	678	ASN
1	A	767	HIS
1	A	832	GLN

5.3.3 RNA [i](#)

There are no RNA molecules in this entry.

5.4 Non-standard residues in protein, DNA, RNA chains [i](#)

There are no non-standard protein/DNA/RNA residues in this entry.

5.5 Carbohydrates [i](#)

There are no monosaccharides in this entry.

5.6 Ligand geometry [i](#)

3 ligands are modelled in this entry.

In the following table, the Counts columns list the number of bonds (or angles) for which Mogul statistics could be retrieved, the number of bonds (or angles) that are observed in the model and the number of bonds (or angles) that are defined in the Chemical Component Dictionary. The Link column lists molecule types, if any, to which the group is linked. The Z score for a bond length (or angle) is the number of standard deviations the observed value is removed from the expected value. A bond length (or angle) with $|Z| > 2$ is considered an outlier worth inspection. RMSZ is the root-mean-square of all Z scores of the bond lengths (or angles).

Mol	Type	Chain	Res	Link	Bond lengths			Bond angles		
					Counts	RMSZ	# $ Z > 2$	Counts	RMSZ	# $ Z > 2$
2	PLP	A	999	1	15,15,16	1.37	3 (20%)	20,22,23	1.14	1 (5%)
3	C4B	A	940	-	21,21,21	2.32	7 (33%)	31,31,31	2.59	11 (35%)
3	C4B	A	998	-	21,21,21	2.09	7 (33%)	31,31,31	2.71	10 (32%)

In the following table, the Chirals column lists the number of chiral outliers, the number of chiral centers analysed, the number of these observed in the model and the number defined in the Chemical Component Dictionary. Similar counts are reported in the Torsion and Rings columns. '-' means no outliers of that kind were identified.

Mol	Type	Chain	Res	Link	Chirals	Torsions	Rings
2	PLP	A	999	1	-	2/6/6/8	0/1/1/1
3	C4B	A	940	-	-	0/6/26/26	0/2/2/2
3	C4B	A	998	-	-	0/6/26/26	0/2/2/2

All (17) bond length outliers are listed below:

Mol	Chain	Res	Type	Atoms	Z	Observed(Å)	Ideal(Å)
3	A	940	C4B	C6A-N1	6.14	1.46	1.39
3	A	998	C4B	C6A-N1	5.64	1.45	1.39
3	A	940	C4B	O5-C1	4.16	1.49	1.42
3	A	998	C4B	O5-C1	3.70	1.48	1.42
3	A	940	C4B	C1-N1	3.53	1.52	1.46
3	A	940	C4B	C2A-N1	3.35	1.43	1.39
3	A	998	C4B	O2A-C2A	2.90	1.28	1.23
2	A	999	PLP	C4A-C4	2.84	1.57	1.51
3	A	940	C4B	C2-C1	2.67	1.56	1.52
3	A	998	C4B	C1-N1	2.53	1.50	1.46
3	A	940	C4B	O2A-C2A	2.53	1.27	1.23
2	A	999	PLP	C3-C2	-2.52	1.38	1.40
3	A	998	C4B	C2A-N1	2.46	1.42	1.39
3	A	998	C4B	C2A-N3	-2.36	1.33	1.38
3	A	998	C4B	C2-C1	2.31	1.55	1.52
2	A	999	PLP	C5A-C5	2.21	1.56	1.50
3	A	940	C4B	C3-C2	2.21	1.57	1.52

All (22) bond angle outliers are listed below:

Mol	Chain	Res	Type	Atoms	Z	Observed(°)	Ideal(°)
3	A	998	C4B	C1-N1-C6A	9.00	131.03	117.27
3	A	940	C4B	C1-N1-C6A	7.98	129.46	117.27
3	A	940	C4B	C6A-N1-C2A	-7.68	118.59	123.32
3	A	998	C4B	C6A-N1-C2A	-6.87	119.09	123.32
3	A	998	C4B	C1-N1-C2A	-4.84	109.88	117.27
3	A	940	C4B	C1-N1-C2A	-3.48	111.95	117.27
3	A	940	C4B	O5-C1-C2	3.29	115.23	110.15
3	A	940	C4B	O6A-C6A-N1	3.24	125.68	122.72
3	A	998	C4B	O5-C1-C2	3.19	115.08	110.15
3	A	998	C4B	O6A-C6A-N1	3.09	125.54	122.72

Continued on next page...

Continued from previous page...

Mol	Chain	Res	Type	Atoms	Z	Observed(°)	Ideal(°)
3	A	998	C4B	N3-C2A-N1	3.08	119.12	115.54
3	A	940	C4B	N3-C2A-N1	3.03	119.07	115.54
3	A	998	C4B	N5-C4A-N3	2.79	120.29	115.80
3	A	940	C4B	O6A-C6A-N5	-2.75	116.37	121.50
3	A	940	C4B	N5-C4A-N3	2.61	120.00	115.80
2	A	999	PLP	O3P-P-O1P	2.60	120.87	110.68
3	A	998	C4B	O6A-C6A-N5	-2.52	116.81	121.50
3	A	998	C4B	O5-C5-C4	2.35	113.95	109.69
3	A	998	C4B	C3-C2-C1	-2.28	105.63	108.98
3	A	940	C4B	O5-C5-C4	2.27	113.82	109.69
3	A	940	C4B	O2A-C2A-N3	-2.26	117.30	121.50
3	A	940	C4B	N5-C6A-N1	2.07	117.95	115.54

There are no chirality outliers.

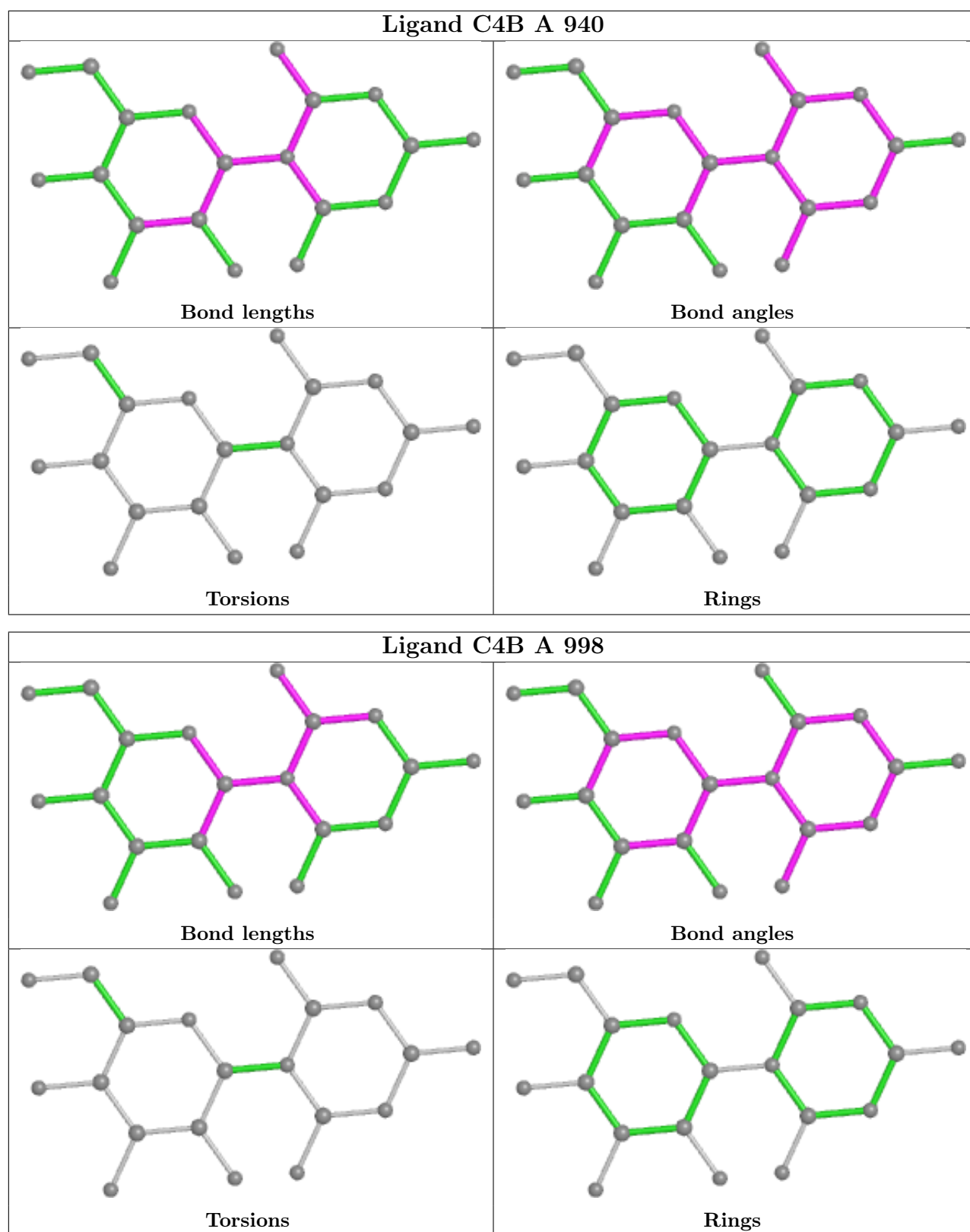
All (2) torsion outliers are listed below:

Mol	Chain	Res	Type	Atoms
2	A	999	PLP	C6-C5-C5A-O4P
2	A	999	PLP	C4-C5-C5A-O4P

There are no ring outliers.

No monomer is involved in short contacts.

The following is a two-dimensional graphical depiction of Mogul quality analysis of bond lengths, bond angles, torsion angles, and ring geometry for all instances of the Ligand of Interest. In addition, ligands with molecular weight > 250 and outliers as shown on the validation Tables will also be included. For torsion angles, if less than 5% of the Mogul distribution of torsion angles is within 10 degrees of the torsion angle in question, then that torsion angle is considered an outlier. Any bond that is central to one or more torsion angles identified as an outlier by Mogul will be highlighted in the graph. For rings, the root-mean-square deviation (RMSD) between the ring in question and similar rings identified by Mogul is calculated over all ring torsion angles. If the average RMSD is greater than 60 degrees and the minimal RMSD between the ring in question and any Mogul-identified rings is also greater than 60 degrees, then that ring is considered an outlier. The outliers are highlighted in purple. The color gray indicates Mogul did not find sufficient equivalents in the CSD to analyse the geometry.



5.7 Other polymers [i](#)

There are no such residues in this entry.

5.8 Polymer linkage issues

There are no chain breaks in this entry.

6 Fit of model and data

6.1 Protein, DNA and RNA chains

In the following table, the column labelled ‘#RSRZ> 2’ contains the number (and percentage) of RSRZ outliers, followed by percent RSRZ outliers for the chain as percentile scores relative to all X-ray entries and entries of similar resolution. The OWAB column contains the minimum, median, 95th percentile and maximum values of the occupancy-weighted average B-factor per residue. The column labelled ‘Q< 0.9’ lists the number of (and percentage) of residues with an average occupancy less than 0.9.

Mol	Chain	Analysed	<RSRZ>	#RSRZ>2	OWAB(Å ²)	Q<0.9
1	A	810/842 (96%)	0.04	37 (4%) 32 31	16, 27, 52, 83	0

All (37) RSRZ outliers are listed below:

Mol	Chain	Res	Type	RSRZ
1	A	324	THR	10.3
1	A	555	VAL	7.4
1	A	253	ASN	7.3
1	A	252	PHE	6.7
1	A	556	HIS	6.3
1	A	254	LEU	4.8
1	A	211	GLN	4.7
1	A	551	ARG	4.7
1	A	435	ALA	4.2
1	A	325	ASN	4.1
1	A	436	VAL	3.4
1	A	113	TYR	3.1
1	A	72	GLN	3.0
1	A	832	GLN	3.0
1	A	75	TYR	2.9
1	A	69	ARG	2.7
1	A	580	CYS	2.6
1	A	21	VAL	2.6
1	A	337	LEU	2.6
1	A	835	PRO	2.6
1	A	12	GLN	2.6
1	A	831	ARG	2.5
1	A	314	SER	2.5
1	A	547	ALA	2.5
1	A	426	ARG	2.5
1	A	583	VAL	2.4
1	A	76	GLU	2.4

Continued on next page...

Continued from previous page...

Mol	Chain	Res	Type	RSRZ
1	A	833	ARG	2.3
1	A	171	CYS	2.3
1	A	723	GLN	2.3
1	A	23	ASN	2.2
1	A	554	LYS	2.2
1	A	753	LYS	2.2
1	A	605	ILE	2.1
1	A	434	GLY	2.0
1	A	510	GLU	2.0
1	A	836	ALA	2.0

6.2 Non-standard residues in protein, DNA, RNA chains [i](#)

There are no non-standard protein/DNA/RNA residues in this entry.

6.3 Carbohydrates [i](#)

There are no monosaccharides in this entry.

6.4 Ligands [i](#)

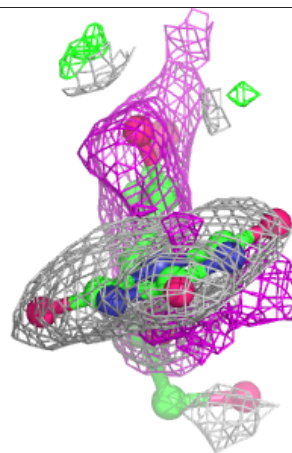
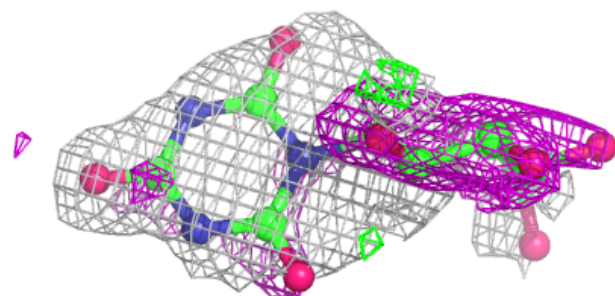
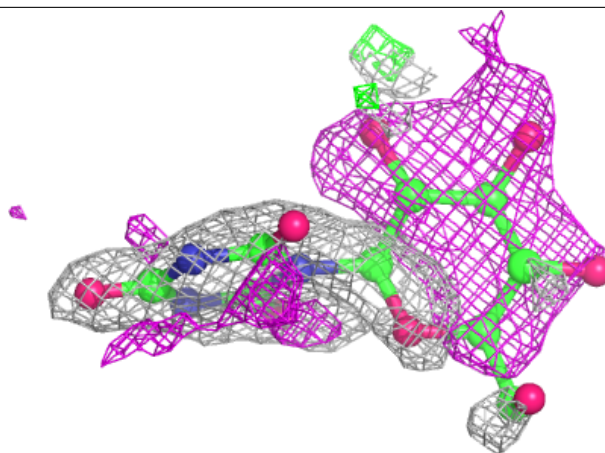
In the following table, the Atoms column lists the number of modelled atoms in the group and the number defined in the chemical component dictionary. The B-factors column lists the minimum, median, 95th percentile and maximum values of B factors of atoms in the group. The column labelled 'Q< 0.9' lists the number of atoms with occupancy less than 0.9.

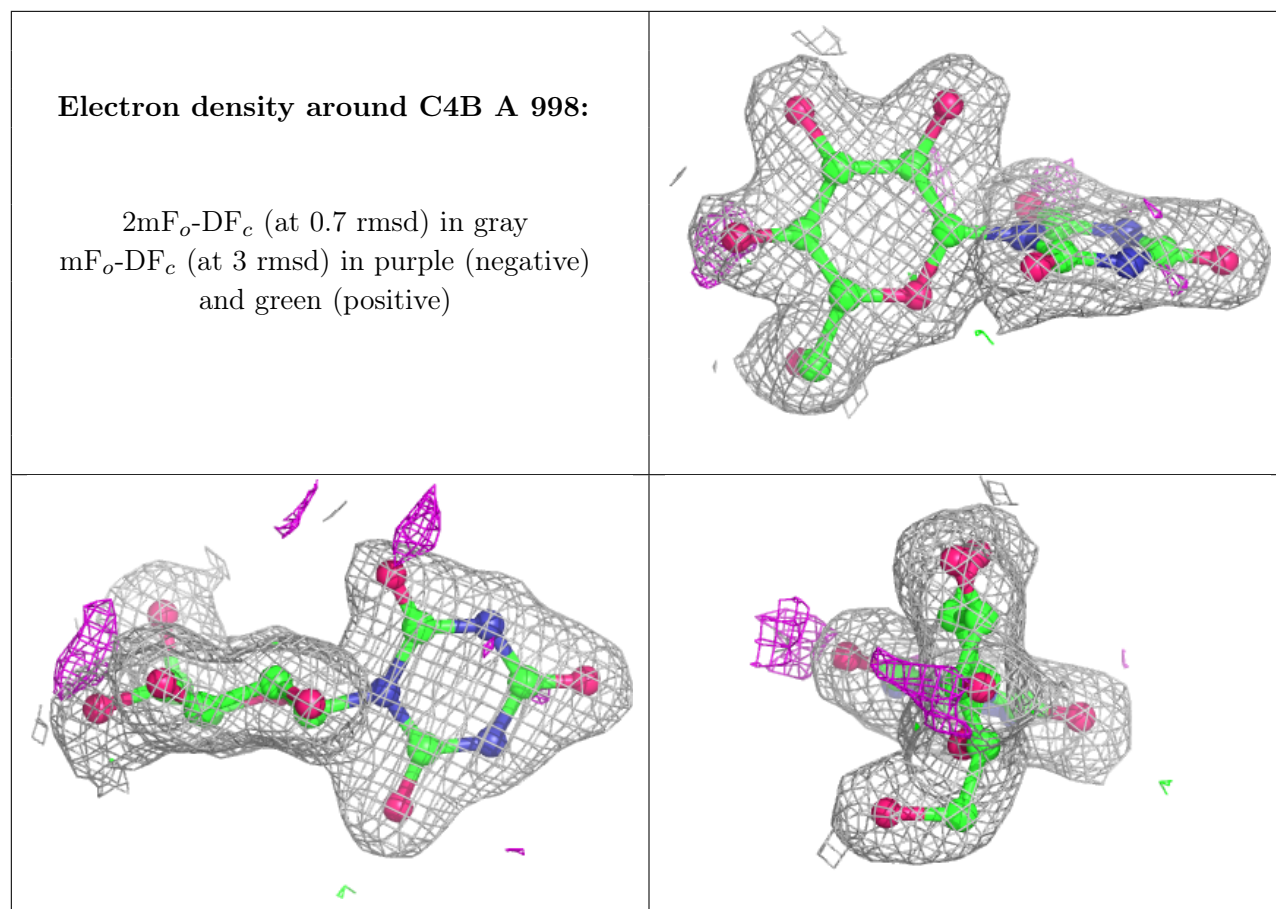
Mol	Type	Chain	Res	Atoms	RSCC	RSR	B-factors(Å ²)	Q<0.9
3	C4B	A	940	20/20	0.63	0.53	52,62,64,65	0
3	C4B	A	998	20/20	0.96	0.09	17,20,25,27	0
2	PLP	A	999	15/16	0.99	0.10	16,17,19,21	0

The following is a graphical depiction of the model fit to experimental electron density of all instances of the Ligand of Interest. In addition, ligands with molecular weight > 250 and outliers as shown on the geometry validation Tables will also be included. Each fit is shown from different orientation to approximate a three-dimensional view.

Electron density around C4B A 940:

$2mF_o-DF_c$ (at 0.7 rmsd) in gray
 mF_o-DF_c (at 3 rmsd) in purple (negative)
and green (positive)





6.5 Other polymers [i](#)

There are no such residues in this entry.