



## Full wwPDB EM Validation Report ⓘ

Mar 9, 2026 – 07:08 AM UTC

PDB ID : 3IY6 / pdb\_00003iy6  
EMDB ID : EMD-5111  
Title : Variable domains of the computer generated model (WAM) of Fab E fitted into the cryoEM reconstruction of the virus-Fab E complex  
Authors : Hafenstein, S.; Bowman, V.D.; Sun, T.; Nelson, C.D.; Palermo, L.M.; Chipman, P.R.; Battisti, A.J.; Parrish, C.R.; Rossmann, M.G.  
Deposited on : 2009-04-09  
Resolution : 12.00 Å(reported)

This is a Full wwPDB EM Validation Report for a publicly released PDB entry.

We welcome your comments at [validation@mail.wwpdb.org](mailto:validation@mail.wwpdb.org)

A user guide is available at

<https://www.wwpdb.org/validation/2017/EMValidationReportHelp>

with specific help available everywhere you see the ⓘ symbol.

The types of validation reports are described at

<http://www.wwpdb.org/validation/2017/FAQs#types>.

---

The following versions of software and data (see [references ⓘ](#)) were used in the production of this report:

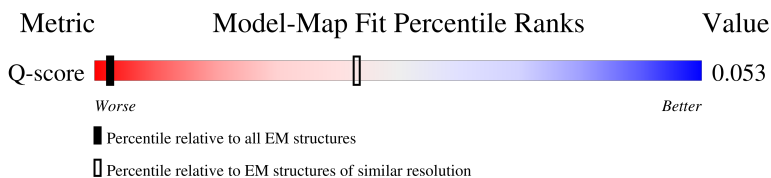
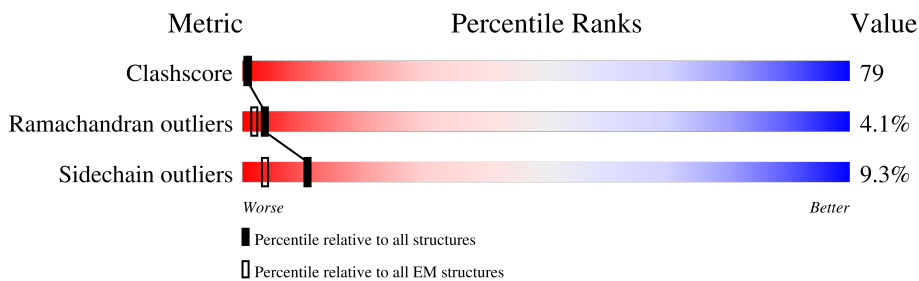
EMDB validation analysis : 0.0.1.dev132  
MolProbity : 4-5-2 with Phenix2.0  
Percentile statistics : 20250101.v01 (using entries in the PDB archive January 1st 2025)  
EM percentile statistics : 202505.v01 (Using data in the EMDB archive up until May 2025)  
MapQ : 1.9.13  
Ideal geometry (proteins) : Engh & Huber (2001)  
Ideal geometry (DNA, RNA) : Parkinson et al. (1996)  
Validation Pipeline (wwPDB-VP) : 2.49

# 1 Overall quality at a glance i

The following experimental techniques were used to determine the structure:  
*ELECTRON MICROSCOPY*

The reported resolution of this entry is 12.00 Å.

Percentile scores (ranging between 0-100) for global validation metrics of the entry are shown in the following graphic. The table shows the number of entries on which the scores are based.



Metric	Whole archive (#Entries)	EM structures (#Entries)	Similar EM resolution (#Entries, resolution range(Å))
Clashscore	229148	23984	-
Ramachandran outliers	224038	23583	-
Sidechain outliers	223484	23102	-
Q-score	-	25397	93 ( 11.50 - 12.50 )

The table below summarises the geometric issues observed across the polymeric chains and their fit to the map. The red, orange, yellow and green segments of the bar indicate the fraction of residues that contain outliers for  $\geq 3$ , 2, 1 and 0 types of geometric quality criteria respectively. A grey segment represents the fraction of residues that are not modelled. The numeric value for each fraction is indicated below the corresponding segment, with a dot representing fractions  $\leq 5\%$ . The upper red bar (where present) indicates the fraction of residues that have poor fit to the EM map (all-atom inclusion  $< 40\%$ ). The numeric value is given above the bar.

Mol	Chain	Length	Quality of chain
1	A	107	<p>39% 44% 16%</p>
2	B	115	<p>17% 37% 32% 26%</p>

## 2 Entry composition

There are 2 unique types of molecules in this entry. The entry contains 1719 atoms, of which 0 are hydrogens and 0 are deuteriums.

In the tables below, the AltConf column contains the number of residues with at least one atom in alternate conformation and the Trace column contains the number of residues modelled with at most 2 atoms.

- Molecule 1 is a protein called fragment from neutralizing antibody E (light chain).

Mol	Chain	Residues	Atoms					AltConf	Trace
			Total	C	N	O	S		
1	A	107	820	507	139	167	7	0	0

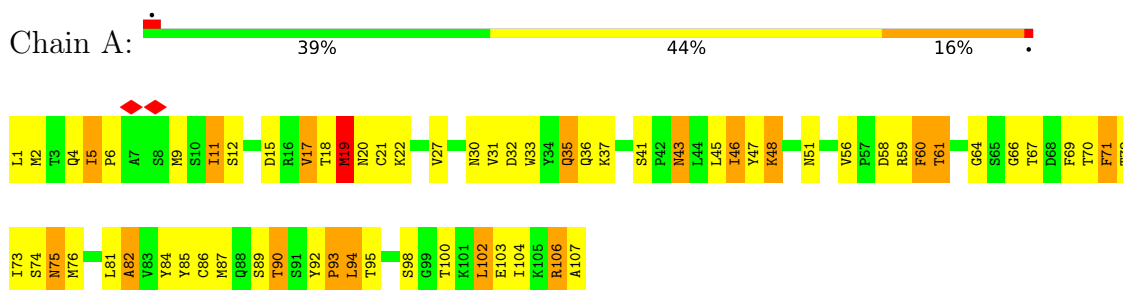
- Molecule 2 is a protein called fragment from neutralizing antibody E (heavy chain).

Mol	Chain	Residues	Atoms					AltConf	Trace
			Total	C	N	O	S		
2	B	115	899	575	148	172	4	0	0

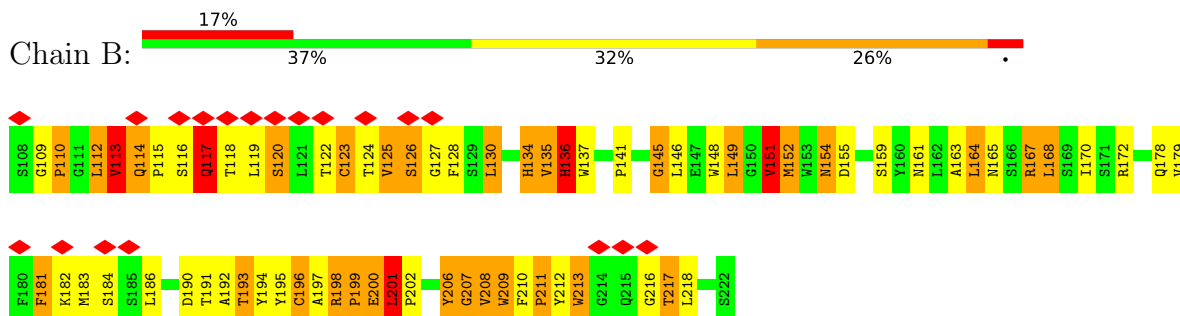
### 3 Residue-property plots

These plots are drawn for all protein, RNA, DNA and oligosaccharide chains in the entry. The first graphic for a chain summarises the proportions of the various outlier classes displayed in the second graphic. The second graphic shows the sequence view annotated by issues in geometry and atom inclusion in map density. Residues are color-coded according to the number of geometric quality criteria for which they contain at least one outlier: green = 0, yellow = 1, orange = 2 and red = 3 or more. A red diamond above a residue indicates a poor fit to the EM map for this residue (all-atom inclusion < 40%). Stretches of 2 or more consecutive residues without any outlier are shown as a green connector. Residues present in the sample, but not in the model, are shown in grey.

- Molecule 1: fragment from neutralizing antibody E (light chain)



- Molecule 2: fragment from neutralizing antibody E (heavy chain)



## 4 Experimental information

Property	Value	Source
EM reconstruction method	SINGLE PARTICLE	Depositor
Imposed symmetry	POINT, I	Depositor
Number of particles used	1684	Depositor
Resolution determination method	FSC 0.5 CUT-OFF	Depositor
CTF correction method	robem	Depositor
Microscope	FEI/PHILIPS CM300FEG/T	Depositor
Voltage (kV)	300	Depositor
Electron dose ( $e^-/\text{\AA}^2$ )	23.8	Depositor
Minimum defocus (nm)	0.5	Depositor
Maximum defocus (nm)	5.6	Depositor
Magnification	47190	Depositor
Image detector	KODAK SO-163 FILM	Depositor
Maximum map value	6.349	Depositor
Minimum map value	-2.902	Depositor
Average map value	0.000	Depositor
Map value standard deviation	1.000	Depositor
Recommended contour level	1	Depositor
Map size ( $\text{\AA}$ )	539.12, 539.12, 539.12	wwPDB
Map dimensions	184, 184, 184	wwPDB
Map angles ( $^\circ$ )	90.0, 90.0, 90.0	wwPDB
Pixel spacing ( $\text{\AA}$ )	2.93, 2.93, 2.93	Depositor

## 5 Model quality i

### 5.1 Standard geometry i

The Z score for a bond length (or angle) is the number of standard deviations the observed value is removed from the expected value. A bond length (or angle) with  $|Z| > 5$  is considered an outlier worth inspection. RMSZ is the root-mean-square of all Z scores of the bond lengths (or angles).

Mol	Chain	Bond lengths		Bond angles	
		RMSZ	# Z  >5	RMSZ	# Z  >5
1	A	1.01	3/834 (0.4%)	1.67	13/1127 (1.2%)
2	B	1.42	6/927 (0.6%)	2.65	59/1266 (4.7%)
All	All	1.24	9/1761 (0.5%)	2.24	72/2393 (3.0%)

Chiral center outliers are detected by calculating the chiral volume of a chiral center and verifying if the center is modelled as a planar moiety or with the opposite hand. A planarity outlier is detected by checking planarity of atoms in a peptide group, atoms in a mainchain group or atoms of a sidechain that are expected to be planar.

Mol	Chain	#Chirality outliers	#Planarity outliers
1	A	1	0
2	B	1	3
All	All	2	3

All (9) bond length outliers are listed below:

Mol	Chain	Res	Type	Atoms	Z	Observed(Å)	Ideal(Å)
2	B	145	GLY	C-O	15.86	1.41	1.23
1	A	60	PHE	CG-CD1	-8.78	1.20	1.38
2	B	113	VAL	N-CA	-8.47	1.35	1.46
2	B	145	GLY	C-N	-7.56	1.22	1.33
1	A	19	MET	CA-C	-5.73	1.45	1.52
2	B	117	GLN	CD-NE2	-5.52	1.21	1.33
1	A	71	PHE	CD2-CE2	-5.45	1.22	1.38
2	B	167	ARG	CZ-NH2	-5.33	1.26	1.33
2	B	201	LEU	CA-CB	-5.14	1.48	1.53

All (72) bond angle outliers are listed below:

Mol	Chain	Res	Type	Atoms	Z	Observed(°)	Ideal(°)
2	B	117	GLN	OE1-CD-NE2	-29.78	92.82	122.60
2	B	168	LEU	CD1-CG-CD2	-20.46	65.78	110.80
2	B	113	VAL	CA-C-O	-20.44	96.64	120.97

*Continued on next page...*

*Continued from previous page...*

Mol	Chain	Res	Type	Atoms	Z	Observed(°)	Ideal(°)
2	B	145	GLY	O-C-N	-15.99	106.65	122.96
2	B	152	MET	CB-CA-C	-15.19	89.68	110.79
2	B	112	LEU	CA-C-N	13.06	139.14	122.95
2	B	112	LEU	C-N-CA	13.06	139.14	122.95
2	B	113	VAL	N-CA-C	12.96	126.58	106.88
2	B	136	HIS	ND1-CE1-NE2	11.79	120.19	108.40
2	B	134	HIS	ND1-CE1-NE2	11.36	119.76	108.40
2	B	201	LEU	CB-CA-C	-10.43	98.67	110.98
2	B	136	HIS	CE1-NE2-CD2	-9.74	99.26	109.00
2	B	126	SER	O-C-N	9.64	134.47	123.48
2	B	206	TYR	CA-C-N	-9.37	111.54	121.48
2	B	206	TYR	C-N-CA	-9.37	111.54	121.48
2	B	134	HIS	CE1-NE2-CD2	-9.24	99.76	109.00
2	B	130	LEU	O-C-N	-9.22	107.57	122.42
2	B	113	VAL	CA-CB-CG1	8.74	125.27	110.40
2	B	113	VAL	CA-CB-CG2	8.57	124.98	110.40
2	B	113	VAL	CG1-CB-CG2	-8.44	92.23	110.80
2	B	201	LEU	O-C-N	8.43	126.33	121.27
2	B	123	CYS	CB-CA-C	8.19	121.80	110.34
2	B	165	ASN	CA-C-O	-8.17	112.06	120.96
1	A	60	PHE	CB-CG-CD1	7.97	134.25	120.70
2	B	211	PRO	CB-CA-C	-7.56	103.32	111.56
2	B	151	VAL	CB-CA-C	-7.41	97.78	110.30
1	A	35	GLN	O-C-N	-7.25	114.86	123.27
1	A	19	MET	N-CA-CB	7.21	123.38	110.83
2	B	207	GLY	N-CA-C	-7.05	100.81	111.10
2	B	134	HIS	CB-CG-CD2	-6.95	122.17	131.20
1	A	90	THR	CA-CB-CG2	6.61	121.74	110.50
2	B	149	LEU	CD1-CG-CD2	-6.60	96.28	110.80
2	B	115	PRO	CA-C-O	-6.57	114.16	121.32
2	B	154	ASN	N-CA-C	-6.51	104.82	112.89
2	B	200	GLU	CA-C-N	-6.49	115.12	122.26
2	B	200	GLU	C-N-CA	-6.49	115.12	122.26
2	B	130	LEU	CA-C-N	-6.35	111.28	122.26
2	B	130	LEU	C-N-CA	-6.35	111.28	122.26
2	B	117	GLN	N-CA-CB	6.22	118.70	110.25
2	B	112	LEU	O-C-N	6.18	130.33	123.16
2	B	181	PHE	CG-CD2-CE2	-6.14	110.26	120.70
2	B	149	LEU	CB-CG-CD2	-6.12	92.35	110.70
1	A	71	PHE	CE1-CZ-CE2	6.07	130.92	120.00
2	B	181	PHE	CD1-CE1-CZ	-6.03	109.14	120.00
2	B	181	PHE	CD1-CG-CD2	6.03	127.65	118.60

*Continued on next page...*

Continued from previous page...

Mol	Chain	Res	Type	Atoms	Z	Observed(°)	Ideal(°)
2	B	115	PRO	O-C-N	5.96	130.12	122.85
2	B	200	GLU	N-CA-C	-5.88	104.26	112.25
1	A	94	LEU	CD1-CG-CD2	5.87	123.70	110.80
2	B	201	LEU	CA-CB-CG	-5.83	95.89	116.30
2	B	136	HIS	CG-ND1-CE1	-5.81	99.42	109.30
2	B	136	HIS	CB-CG-CD2	-5.78	123.69	131.20
2	B	125	VAL	CA-CB-CG1	5.75	120.17	110.40
2	B	113	VAL	CB-CA-C	5.75	119.68	111.81
2	B	145	GLY	CA-C-O	-5.65	116.44	121.64
1	A	48	LYS	N-CA-CB	5.65	120.03	110.49
2	B	134	HIS	CG-ND1-CE1	-5.64	99.70	109.30
2	B	124	THR	CA-CB-OG1	5.51	117.86	109.60
2	B	127	GLY	N-CA-C	-5.49	107.44	115.63
1	A	17	VAL	CA-CB-CG2	-5.43	101.17	110.40
2	B	117	GLN	N-CA-C	5.42	116.92	110.19
2	B	164	LEU	CB-CG-CD1	5.34	126.73	110.70
2	B	130	LEU	N-CA-C	-5.26	106.89	113.15
1	A	60	PHE	CG-CD2-CE2	5.25	129.62	120.70
2	B	201	LEU	CB-CG-CD1	5.22	126.36	110.70
2	B	120	SER	CB-CA-C	-5.18	101.85	110.14
1	A	60	PHE	CD1-CG-CD2	-5.17	110.84	118.60
2	B	112	LEU	CA-C-O	5.13	126.82	120.92
2	B	155	ASP	CA-CB-CG	5.12	117.72	112.60
1	A	93	PRO	N-CA-CB	-5.09	97.00	102.60
2	B	135	VAL	CA-CB-CG2	5.04	118.96	110.40
1	A	17	VAL	CB-CA-C	5.03	118.79	110.30
1	A	19	MET	CB-CA-C	5.01	118.94	109.37

All (2) chirality outliers are listed below:

Mol	Chain	Res	Type	Atom
1	A	19	MET	CA
2	B	113	VAL	CA

All (3) planarity outliers are listed below:

Mol	Chain	Res	Type	Group
2	B	113	VAL	Mainchain
2	B	117	GLN	Sidechain
2	B	136	HIS	Sidechain

## 5.2 Too-close contacts

In the following table, the Non-H and H(model) columns list the number of non-hydrogen atoms and hydrogen atoms in the chain respectively. The H(added) column lists the number of hydrogen atoms added and optimized by MolProbity. The Clashes column lists the number of clashes within the asymmetric unit, whereas Symm-Clashes lists symmetry-related clashes.

Mol	Chain	Non-H	H(model)	H(added)	Clashes	Symm-Clashes
1	A	820	0	798	112	0
2	B	899	0	861	178	0
All	All	1719	0	1659	264	0

The all-atom clashscore is defined as the number of clashes found per 1000 atoms (including hydrogen atoms). The all-atom clashscore for this structure is 79.

All (264) close contacts within the same asymmetric unit are listed below, sorted by their clash magnitude.

Atom-1	Atom-2	Interatomic distance (Å)	Clash overlap (Å)
1:A:9:MET:HE2	1:A:17:VAL:HG23	1.20	1.14
1:A:19:MET:HE1	1:A:84:TYR:HB2	1.13	1.09
2:B:113:VAL:HG13	2:B:117:GLN:HG3	1.37	1.05
1:A:19:MET:CE	1:A:84:TYR:HB2	1.91	1.00
2:B:201:LEU:HD13	2:B:207:GLY:HA3	1.43	1.00
2:B:113:VAL:HG21	2:B:119:LEU:HD22	1.44	0.99
2:B:168:LEU:HD12	2:B:181:PHE:CE2	1.98	0.99
1:A:60:PHE:HD2	1:A:71:PHE:CZ	1.80	0.99
2:B:201:LEU:HD13	2:B:207:GLY:CA	1.93	0.98
1:A:60:PHE:CD2	1:A:71:PHE:HZ	1.82	0.97
1:A:11:ILE:CG1	1:A:76:MET:SD	2.53	0.96
2:B:149:LEU:CD1	2:B:164:LEU:HD22	1.97	0.95
2:B:113:VAL:HG13	2:B:117:GLN:CG	1.96	0.95
2:B:120:SER:HB2	2:B:182:LYS:NZ	1.81	0.95
2:B:201:LEU:HD13	2:B:207:GLY:C	1.91	0.94
1:A:19:MET:HE1	1:A:84:TYR:CB	1.97	0.93
1:A:60:PHE:HD2	1:A:71:PHE:HZ	1.00	0.93
2:B:201:LEU:HB3	2:B:208:VAL:HA	1.50	0.92
2:B:168:LEU:HD12	2:B:181:PHE:CZ	2.05	0.92
2:B:123:CYS:HB3	2:B:179:VAL:CG1	2.01	0.88
1:A:9:MET:HE2	1:A:17:VAL:CG2	2.02	0.88
2:B:149:LEU:HD21	2:B:181:PHE:CE2	2.08	0.88
2:B:163:ALA:HB3	2:B:164:LEU:HD12	1.54	0.87
1:A:94:LEU:HG	2:B:210:PHE:HZ	1.37	0.87
2:B:148:TRP:HE1	2:B:151:VAL:HG13	1.37	0.86

*Continued on next page...*

*Continued from previous page...*

Atom-1	Atom-2	Interatomic distance (Å)	Clash overlap (Å)
2:B:123:CYS:HB3	2:B:179:VAL:HG13	1.57	0.85
1:A:76:MET:CE	1:A:102:LEU:HD11	2.06	0.85
2:B:148:TRP:HZ2	2:B:151:VAL:HG22	1.43	0.84
1:A:11:ILE:HD11	1:A:76:MET:SD	2.18	0.84
2:B:122:THR:HG21	2:B:178:GLN:HE22	1.42	0.84
2:B:122:THR:HG23	2:B:178:GLN:OE1	1.77	0.84
2:B:113:VAL:HG11	2:B:186:LEU:HD12	1.59	0.84
2:B:113:VAL:HG11	2:B:186:LEU:CD1	2.07	0.83
1:A:35:GLN:HB3	1:A:43:ASN:HD21	1.42	0.83
1:A:89:SER:HB3	2:B:208:VAL:HB	1.60	0.83
2:B:125:VAL:HB	2:B:213:TRP:CH2	2.14	0.83
1:A:18:THR:HG23	1:A:70:THR:CG2	2.09	0.83
2:B:168:LEU:CD1	2:B:183:MET:HG2	2.10	0.82
2:B:163:ALA:CB	2:B:164:LEU:HD12	2.11	0.81
2:B:135:VAL:HA	2:B:197:ALA:O	1.80	0.81
1:A:47:TYR:HB2	2:B:209:TRP:CD1	2.15	0.80
1:A:36:GLN:O	1:A:82:ALA:HB1	1.82	0.80
2:B:201:LEU:HD23	2:B:202:PRO:HD2	1.60	0.80
1:A:9:MET:CE	1:A:17:VAL:HG23	2.09	0.80
2:B:120:SER:HB2	2:B:182:LYS:HZ3	1.47	0.79
1:A:92:TYR:CE2	2:B:151:VAL:HG21	2.17	0.79
1:A:5:ILE:HD12	1:A:6:PRO:HA	1.64	0.78
2:B:141:PRO:HD2	2:B:145:GLY:O	1.84	0.76
2:B:201:LEU:CD1	2:B:207:GLY:HA3	2.17	0.74
2:B:113:VAL:CG2	2:B:119:LEU:HD22	2.16	0.74
1:A:11:ILE:CD1	1:A:76:MET:SD	2.76	0.73
2:B:197:ALA:HB2	2:B:212:TYR:CD1	2.22	0.73
1:A:27:VAL:HG12	1:A:90:THR:HG21	1.70	0.73
1:A:76:MET:HE3	1:A:102:LEU:CG	2.19	0.73
2:B:208:VAL:HG12	2:B:210:PHE:CE1	2.25	0.72
1:A:94:LEU:HG	2:B:210:PHE:CZ	2.25	0.72
2:B:125:VAL:HG21	2:B:128:PHE:CE1	2.25	0.72
1:A:76:MET:HE2	1:A:104:ILE:CD1	2.20	0.71
2:B:148:TRP:NE1	2:B:151:VAL:HG13	2.05	0.71
1:A:11:ILE:HG12	1:A:76:MET:SD	2.28	0.71
1:A:48:LYS:HB2	2:B:209:TRP:CZ2	2.26	0.70
2:B:114:GLN:O	2:B:117:GLN:HG2	1.92	0.69
2:B:120:SER:HB2	2:B:182:LYS:HZ1	1.57	0.69
2:B:123:CYS:HG	2:B:196:CYS:HG	0.74	0.69
1:A:37:LYS:HA	1:A:82:ALA:CB	2.22	0.69
1:A:76:MET:SD	1:A:104:ILE:HD13	2.32	0.69

*Continued on next page...*

*Continued from previous page...*

Atom-1	Atom-2	Interatomic distance (Å)	Clash overlap (Å)
1:A:76:MET:CE	1:A:104:ILE:HD13	2.21	0.69
1:A:76:MET:HE3	1:A:102:LEU:HD11	1.75	0.69
1:A:76:MET:HE2	1:A:104:ILE:HD11	1.74	0.69
2:B:152:MET:HE1	2:B:172:ARG:HB3	1.75	0.68
2:B:134:HIS:HB2	2:B:199:PRO:CG	2.24	0.68
1:A:47:TYR:HD2	2:B:209:TRP:CE2	2.12	0.68
2:B:122:THR:CG2	2:B:178:GLN:HE22	2.05	0.68
2:B:134:HIS:C	2:B:199:PRO:HD2	2.18	0.68
1:A:11:ILE:HG13	1:A:76:MET:SD	2.32	0.67
2:B:136:HIS:CE1	2:B:151:VAL:HG12	2.30	0.67
2:B:149:LEU:HD12	2:B:164:LEU:HD22	1.75	0.66
1:A:2:MET:HG2	1:A:86:CYS:SG	2.35	0.66
2:B:201:LEU:HG	2:B:209:TRP:CD2	2.30	0.66
1:A:93:PRO:HB3	2:B:148:TRP:CZ3	2.31	0.66
2:B:199:PRO:HA	2:B:211:PRO:HD2	1.77	0.66
2:B:113:VAL:HG13	2:B:117:GLN:NE2	2.10	0.65
2:B:113:VAL:HG22	2:B:117:GLN:NE2	2.11	0.65
2:B:123:CYS:CB	2:B:179:VAL:CG1	2.74	0.65
2:B:134:HIS:HB2	2:B:199:PRO:CD	2.25	0.65
2:B:201:LEU:HG	2:B:209:TRP:CE3	2.32	0.65
2:B:216:GLY:O	2:B:217:THR:HB	1.97	0.65
1:A:61:THR:OG1	1:A:72:THR:HG23	1.97	0.64
2:B:113:VAL:CG1	2:B:186:LEU:HD12	2.26	0.64
1:A:9:MET:HE3	1:A:11:ILE:HG22	1.79	0.64
1:A:18:THR:HG23	1:A:70:THR:HG21	1.79	0.64
2:B:112:LEU:HD12	2:B:113:VAL:H	1.62	0.64
2:B:149:LEU:HD11	2:B:164:LEU:HD22	1.79	0.64
2:B:113:VAL:CG1	2:B:117:GLN:HG3	2.23	0.64
1:A:76:MET:HE1	1:A:102:LEU:HD11	1.79	0.63
1:A:76:MET:CE	1:A:102:LEU:CD1	2.76	0.63
1:A:76:MET:CE	1:A:104:ILE:CD1	2.75	0.63
1:A:22:LYS:HA	1:A:67:THR:O	1.99	0.63
2:B:110:PRO:HD3	2:B:217:THR:OG1	1.98	0.63
2:B:130:LEU:HD23	2:B:172:ARG:HD3	1.80	0.63
1:A:37:LYS:HA	1:A:82:ALA:HB2	1.81	0.62
1:A:76:MET:HE3	1:A:102:LEU:CD1	2.29	0.62
2:B:201:LEU:HD12	2:B:209:TRP:H	1.64	0.62
2:B:134:HIS:HB2	2:B:199:PRO:HG3	1.80	0.62
2:B:134:HIS:O	2:B:198:ARG:HA	1.99	0.62
2:B:130:LEU:HG	2:B:172:ARG:NH1	2.16	0.61
2:B:168:LEU:HD12	2:B:183:MET:HG2	1.81	0.61

*Continued on next page...*

*Continued from previous page...*

Atom-1	Atom-2	Interatomic distance (Å)	Clash overlap (Å)
2:B:201:LEU:CD1	2:B:209:TRP:CE2	2.83	0.61
1:A:85:TYR:CD1	2:B:146:LEU:HD12	2.37	0.60
1:A:106:ARG:HG2	1:A:107:ALA:N	2.16	0.60
2:B:123:CYS:HG	2:B:196:CYS:CB	2.14	0.60
2:B:110:PRO:HG3	2:B:217:THR:OG1	2.01	0.60
2:B:136:HIS:O	2:B:196:CYS:HA	2.02	0.60
1:A:9:MET:HG2	1:A:17:VAL:HG21	1.84	0.60
2:B:118:THR:HG22	2:B:184:SER:HA	1.84	0.59
2:B:149:LEU:HD21	2:B:181:PHE:CZ	2.36	0.59
1:A:11:ILE:HG12	1:A:102:LEU:HD11	1.85	0.59
2:B:125:VAL:HG23	2:B:213:TRP:CZ3	2.37	0.59
1:A:17:VAL:HG22	1:A:18:THR:N	2.17	0.58
2:B:164:LEU:HB3	2:B:168:LEU:HG	1.85	0.58
2:B:201:LEU:HD13	2:B:208:VAL:N	2.17	0.58
2:B:201:LEU:HD11	2:B:209:TRP:CE2	2.38	0.58
1:A:48:LYS:HB2	2:B:209:TRP:HZ2	1.68	0.58
2:B:149:LEU:HD11	2:B:181:PHE:HZ	1.67	0.58
1:A:76:MET:HE3	1:A:102:LEU:HG	1.86	0.58
2:B:161:ASN:OD1	2:B:163:ALA:HB3	2.04	0.57
1:A:47:TYR:HB2	2:B:209:TRP:CG	2.39	0.57
1:A:12:SER:O	1:A:15:ASP:HB2	2.03	0.57
2:B:149:LEU:HD11	2:B:181:PHE:CZ	2.40	0.57
2:B:193:THR:HG21	2:B:195:TYR:CZ	2.39	0.57
2:B:110:PRO:CG	2:B:217:THR:OG1	2.53	0.56
2:B:201:LEU:HD12	2:B:209:TRP:CD1	2.39	0.56
1:A:18:THR:HG23	1:A:70:THR:HG23	1.86	0.56
2:B:113:VAL:HG21	2:B:119:LEU:CD2	2.29	0.56
2:B:122:THR:HG23	2:B:178:GLN:CD	2.30	0.56
1:A:102:LEU:HD12	1:A:103:GLU:N	2.20	0.56
2:B:201:LEU:HB3	2:B:208:VAL:CA	2.32	0.56
2:B:201:LEU:CB	2:B:208:VAL:HA	2.30	0.56
1:A:18:THR:CG2	1:A:70:THR:CG2	2.83	0.56
2:B:168:LEU:CD1	2:B:181:PHE:CZ	2.84	0.56
1:A:5:ILE:HD12	1:A:6:PRO:CA	2.34	0.56
1:A:32:ASP:OD1	1:A:87:MET:HB3	2.06	0.56
1:A:87:MET:SD	2:B:210:PHE:CD2	2.98	0.55
2:B:110:PRO:HB2	2:B:218:LEU:O	2.06	0.55
1:A:35:GLN:HB3	1:A:43:ASN:ND2	2.18	0.55
1:A:30:ASN:OD1	1:A:90:THR:HB	2.08	0.54
1:A:71:PHE:HE2	1:A:73:ILE:HD11	1.72	0.54
2:B:125:VAL:HG22	2:B:126:SER:N	2.22	0.54

*Continued on next page...*

*Continued from previous page...*

Atom-1	Atom-2	Interatomic distance (Å)	Clash overlap (Å)
2:B:125:VAL:CG2	2:B:128:PHE:CE1	2.91	0.54
1:A:1:LEU:HA	1:A:95:THR:HG21	1.90	0.53
1:A:45:LEU:HA	1:A:56:VAL:HG21	1.89	0.53
2:B:208:VAL:HG12	2:B:210:PHE:HE1	1.72	0.53
1:A:32:ASP:OD1	1:A:87:MET:HE2	2.07	0.53
1:A:9:MET:CG	1:A:17:VAL:HG21	2.38	0.53
1:A:60:PHE:CD2	1:A:71:PHE:CZ	2.70	0.53
2:B:113:VAL:HG22	2:B:117:GLN:HE22	1.71	0.53
2:B:168:LEU:HD13	2:B:183:MET:HA	1.90	0.52
2:B:152:MET:HG3	2:B:170:ILE:HD13	1.91	0.52
1:A:9:MET:CE	1:A:17:VAL:CG2	2.78	0.52
2:B:168:LEU:HB3	2:B:181:PHE:CE1	2.45	0.51
2:B:197:ALA:HA	2:B:213:TRP:CD1	2.45	0.51
2:B:122:THR:CG2	2:B:178:GLN:NE2	2.72	0.51
1:A:19:MET:CE	1:A:84:TYR:CB	2.73	0.51
2:B:123:CYS:SG	2:B:179:VAL:CG1	2.98	0.51
2:B:191:THR:O	2:B:192:ALA:HB2	2.10	0.51
1:A:89:SER:HA	1:A:94:LEU:HD12	1.92	0.51
2:B:109:GLY:N	2:B:110:PRO:CD	2.73	0.51
2:B:136:HIS:CD2	2:B:199:PRO:HD3	2.45	0.51
2:B:201:LEU:HD11	2:B:209:TRP:CZ2	2.46	0.51
1:A:47:TYR:CD2	2:B:209:TRP:CD2	2.99	0.51
2:B:113:VAL:CG1	2:B:186:LEU:CD1	2.82	0.51
2:B:122:THR:CG2	2:B:123:CYS:N	2.74	0.51
2:B:122:THR:HG22	2:B:123:CYS:N	2.25	0.51
2:B:149:LEU:CG	2:B:181:PHE:CZ	2.94	0.51
1:A:93:PRO:CB	2:B:148:TRP:CZ3	2.94	0.50
2:B:217:THR:HG23	2:B:217:THR:O	2.11	0.50
2:B:110:PRO:CD	2:B:217:THR:OG1	2.59	0.50
2:B:197:ALA:HA	2:B:213:TRP:NE1	2.27	0.50
1:A:76:MET:HE1	1:A:102:LEU:CD1	2.42	0.50
2:B:134:HIS:CA	2:B:199:PRO:HD2	2.42	0.50
1:A:18:THR:HG22	1:A:20:ASN:OD1	2.11	0.49
1:A:9:MET:HG3	1:A:11:ILE:CG2	2.42	0.49
2:B:134:HIS:CE1	2:B:154:ASN:HB2	2.48	0.49
1:A:30:ASN:HB3	2:B:206:TYR:O	2.12	0.49
1:A:59:ARG:HD3	1:A:75:ASN:O	2.13	0.49
1:A:18:THR:CG2	1:A:70:THR:HG23	2.43	0.49
1:A:30:ASN:ND2	1:A:90:THR:HA	2.27	0.49
2:B:148:TRP:CZ2	2:B:151:VAL:HG22	2.34	0.49
1:A:92:TYR:CE1	1:A:94:LEU:HD11	2.47	0.49

*Continued on next page...*

*Continued from previous page...*

Atom-1	Atom-2	Interatomic distance (Å)	Clash overlap (Å)
1:A:102:LEU:HD12	1:A:102:LEU:C	2.37	0.48
1:A:33:TRP:CZ3	1:A:86:CYS:HB3	2.48	0.48
2:B:125:VAL:CB	2:B:213:TRP:CH2	2.93	0.48
1:A:89:SER:HB3	2:B:208:VAL:CA	2.43	0.48
2:B:201:LEU:CD2	2:B:202:PRO:HD2	2.38	0.48
2:B:123:CYS:SG	2:B:179:VAL:HG11	2.54	0.48
2:B:112:LEU:HD12	2:B:113:VAL:N	2.27	0.48
2:B:164:LEU:HD12	2:B:164:LEU:N	2.29	0.47
1:A:81:LEU:O	1:A:82:ALA:HB2	2.15	0.47
1:A:35:GLN:HB2	1:A:45:LEU:HD11	1.96	0.47
1:A:87:MET:SD	2:B:210:PHE:HD2	2.36	0.47
1:A:6:PRO:HD2	1:A:19:MET:HB3	1.96	0.47
2:B:201:LEU:HD23	2:B:201:LEU:HA	1.46	0.47
2:B:164:LEU:HB3	2:B:168:LEU:CG	2.45	0.47
1:A:106:ARG:HG2	1:A:107:ALA:H	1.79	0.47
2:B:168:LEU:HB3	2:B:181:PHE:CZ	2.49	0.47
2:B:123:CYS:CB	2:B:179:VAL:HG12	2.45	0.46
2:B:201:LEU:HA	2:B:202:PRO:HD2	1.72	0.46
1:A:64:GLY:HA3	1:A:69:PHE:HA	1.97	0.46
1:A:74:SER:C	1:A:75:ASN:HD22	2.23	0.46
2:B:113:VAL:CB	2:B:117:GLN:HE21	2.28	0.46
2:B:123:CYS:SG	2:B:196:CYS:CB	3.04	0.46
1:A:11:ILE:HG21	1:A:11:ILE:HD13	1.56	0.46
1:A:87:MET:CE	2:B:210:PHE:CD2	2.98	0.46
1:A:76:MET:HE3	1:A:102:LEU:HD21	1.98	0.45
1:A:87:MET:HE1	2:B:210:PHE:CD2	2.52	0.45
1:A:89:SER:HB3	2:B:208:VAL:N	2.30	0.45
1:A:94:LEU:HD21	2:B:151:VAL:HG11	1.98	0.45
2:B:137:TRP:HB3	2:B:149:LEU:HD23	1.98	0.45
1:A:87:MET:SD	2:B:210:PHE:CE2	3.09	0.45
2:B:151:VAL:HG23	2:B:159:SER:H	1.82	0.45
2:B:148:TRP:HZ2	2:B:151:VAL:CG2	2.23	0.45
2:B:134:HIS:O	2:B:199:PRO:HD2	2.17	0.45
2:B:193:THR:CG2	2:B:195:TYR:CE2	3.00	0.45
2:B:163:ALA:HB3	2:B:164:LEU:CD1	2.37	0.45
1:A:81:LEU:O	1:A:82:ALA:CB	2.64	0.45
1:A:47:TYR:HD2	2:B:209:TRP:CD2	2.35	0.45
1:A:11:ILE:HD11	1:A:76:MET:CG	2.46	0.44
2:B:113:VAL:CA	2:B:117:GLN:HE21	2.30	0.44
1:A:48:LYS:HD3	1:A:51:ASN:ND2	2.32	0.44
2:B:134:HIS:HB2	2:B:199:PRO:HD2	1.98	0.44

*Continued on next page...*

Continued from previous page...

Atom-1	Atom-2	Interatomic distance (Å)	Clash overlap (Å)
2:B:198:ARG:HD2	2:B:211:PRO:HB2	1.99	0.44
1:A:18:THR:CG2	1:A:70:THR:HG21	2.44	0.44
2:B:201:LEU:CD1	2:B:209:TRP:CD2	3.01	0.44
1:A:94:LEU:CD2	2:B:151:VAL:HG11	2.48	0.43
2:B:193:THR:HG22	2:B:195:TYR:CE2	2.53	0.43
2:B:141:PRO:CD	2:B:145:GLY:O	2.62	0.43
1:A:76:MET:HE3	1:A:102:LEU:CD2	2.47	0.43
2:B:114:GLN:OE1	2:B:117:GLN:CD	2.61	0.43
2:B:193:THR:CG2	2:B:195:TYR:CZ	3.01	0.43
1:A:46:ILE:HA	1:A:51:ASN:O	2.19	0.43
2:B:125:VAL:CG1	2:B:130:LEU:HD13	2.49	0.43
2:B:200:GLU:O	2:B:209:TRP:CE3	2.72	0.43
1:A:59:ARG:O	1:A:73:ILE:HA	2.19	0.42
1:A:85:TYR:CE1	2:B:146:LEU:HD12	2.54	0.42
2:B:136:HIS:ND1	2:B:151:VAL:HG12	2.34	0.42
2:B:125:VAL:HG21	2:B:128:PHE:CZ	2.54	0.42
2:B:194:TYR:O	2:B:217:THR:HG22	2.18	0.42
2:B:136:HIS:CE1	2:B:210:PHE:CE1	3.07	0.42
2:B:201:LEU:HD12	2:B:209:TRP:CG	2.54	0.42
1:A:19:MET:HE2	1:A:100:THR:HB	2.02	0.42
2:B:168:LEU:CG	2:B:181:PHE:CZ	3.03	0.42
1:A:4:GLN:HG3	1:A:21:CYS:SG	2.60	0.41
2:B:201:LEU:HB2	2:B:209:TRP:N	2.35	0.41
1:A:92:TYR:CD2	2:B:151:VAL:HG21	2.52	0.41
2:B:168:LEU:HD22	2:B:183:MET:HA	2.02	0.41
2:B:168:LEU:CG	2:B:181:PHE:HZ	2.34	0.41
2:B:113:VAL:HG11	2:B:186:LEU:HD13	1.95	0.41
2:B:125:VAL:CB	2:B:213:TRP:CZ3	3.04	0.41
2:B:167:ARG:NH2	2:B:190:ASP:OD2	2.54	0.41
2:B:201:LEU:CG	2:B:209:TRP:CD2	3.00	0.41
2:B:168:LEU:N	2:B:168:LEU:HD23	2.35	0.40
2:B:109:GLY:N	2:B:110:PRO:HD2	2.36	0.40
1:A:31:VAL:HG21	1:A:69:PHE:CD1	2.56	0.40
2:B:125:VAL:HB	2:B:213:TRP:HH2	1.74	0.40

There are no symmetry-related clashes.

## 5.3 Torsion angles [i](#)

### 5.3.1 Protein backbone [i](#)

In the following table, the Percentiles column shows the percent Ramachandran outliers of the chain as a percentile score with respect to all PDB entries followed by that with respect to all EM entries.

The Analysed column shows the number of residues for which the backbone conformation was analysed, and the total number of residues.

Mol	Chain	Analysed	Favoured	Allowed	Outliers	Percentiles	
1	A	105/107 (98%)	95 (90%)	8 (8%)	2 (2%)	6	32
2	B	113/115 (98%)	97 (86%)	9 (8%)	7 (6%)	1	13
All	All	218/222 (98%)	192 (88%)	17 (8%)	9 (4%)	4	18

All (9) Ramachandran outliers are listed below:

Mol	Chain	Res	Type
1	A	82	ALA
2	B	213	TRP
2	B	217	THR
2	B	116	SER
1	A	66	GLY
2	B	199	PRO
2	B	209	TRP
2	B	208	VAL
2	B	110	PRO

### 5.3.2 Protein sidechains [i](#)

In the following table, the Percentiles column shows the percent sidechain outliers of the chain as a percentile score with respect to all PDB entries followed by that with respect to all EM entries.

The Analysed column shows the number of residues for which the sidechain conformation was analysed, and the total number of residues.

Mol	Chain	Analysed	Rotameric	Outliers	Percentiles	
1	A	93/93 (100%)	81 (87%)	12 (13%)	4	15
2	B	101/101 (100%)	95 (94%)	6 (6%)	18	39
All	All	194/194 (100%)	176 (91%)	18 (9%)	11	26

All (18) residues with a non-rotameric sidechain are listed below:

Mol	Chain	Res	Type
1	A	5	ILE
1	A	11	ILE
1	A	19	MET
1	A	41	SER
1	A	43	ASN
1	A	46	ILE
1	A	58	ASP
1	A	61	THR
1	A	75	ASN
1	A	98	SER
1	A	102	LEU
1	A	106	ARG
2	B	114	GLN
2	B	151	VAL
2	B	193	THR
2	B	196	CYS
2	B	198	ARG
2	B	201	LEU

Sometimes sidechains can be flipped to improve hydrogen bonding and reduce clashes. All (4) such sidechains are listed below:

Mol	Chain	Res	Type
1	A	43	ASN
1	A	53	ASN
1	A	75	ASN
2	B	117	GLN

### 5.3.3 RNA [i](#)

There are no RNA molecules in this entry.

### 5.4 Non-standard residues in protein, DNA, RNA chains [i](#)

There are no non-standard protein/DNA/RNA residues in this entry.

### 5.5 Carbohydrates [i](#)

There are no oligosaccharides in this entry.

## 5.6 Ligand geometry [i](#)

There are no ligands in this entry.

## 5.7 Other polymers [i](#)

There are no such residues in this entry.

## 5.8 Polymer linkage issues [i](#)

There are no chain breaks in this entry.

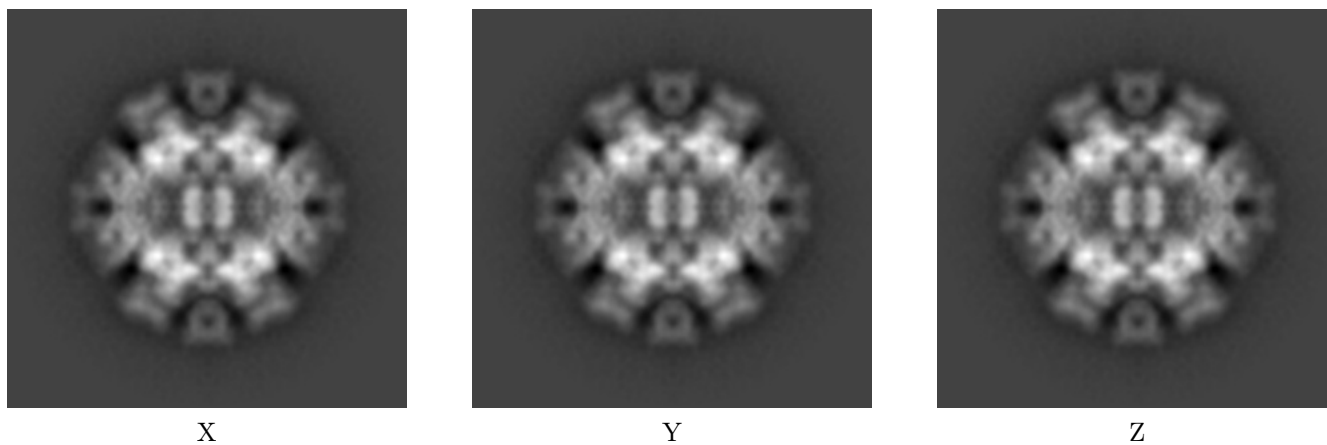
## 6 Map visualisation [i](#)

This section contains visualisations of the EMDB entry EMD-5111. These allow visual inspection of the internal detail of the map and identification of artifacts.

No raw map or half-maps were deposited for this entry and therefore no images, graphs, etc. pertaining to the raw map can be shown.

### 6.1 Orthogonal projections [i](#)

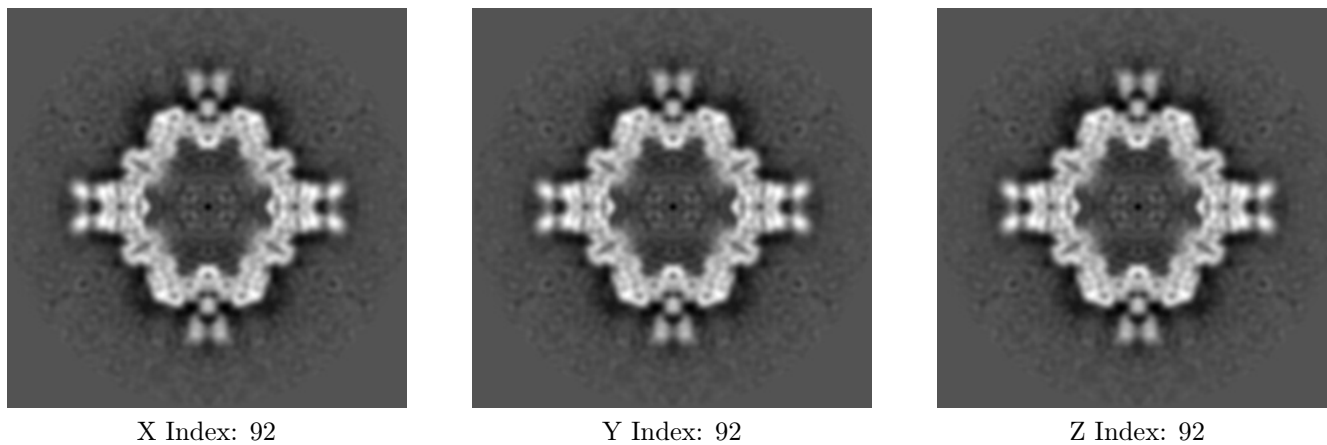
#### 6.1.1 Primary map



The images above show the map projected in three orthogonal directions.

### 6.2 Central slices [i](#)

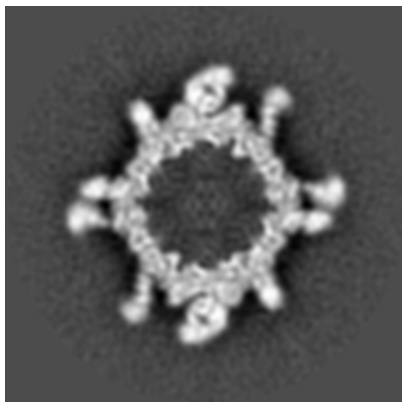
#### 6.2.1 Primary map



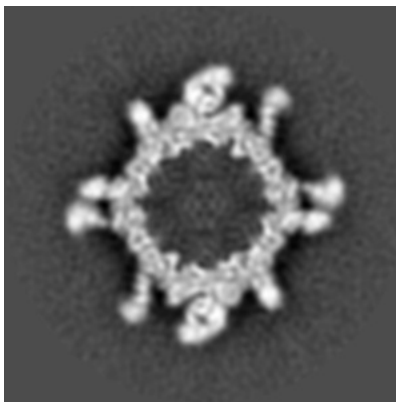
The images above show central slices of the map in three orthogonal directions.

## 6.3 Largest variance slices [\(i\)](#)

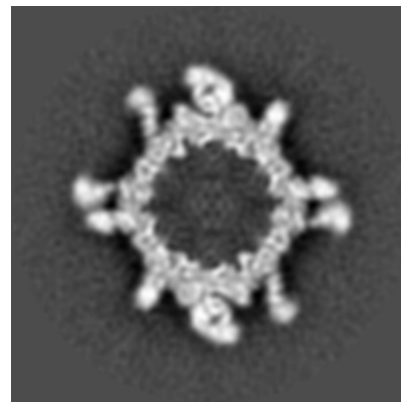
### 6.3.1 Primary map



X Index: 85



Y Index: 85

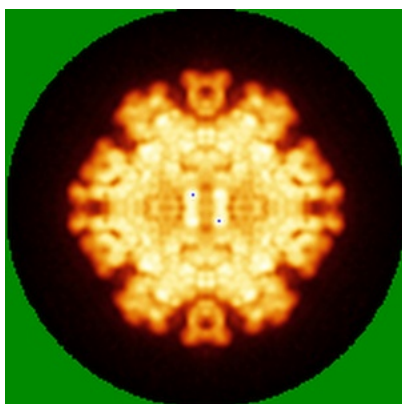


Z Index: 99

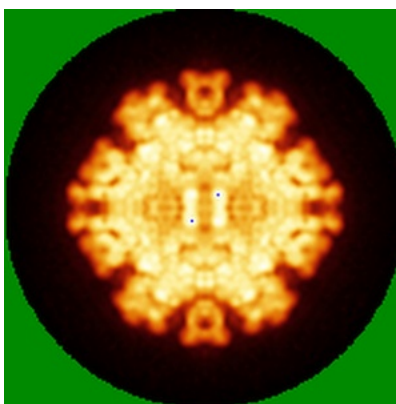
The images above show the largest variance slices of the map in three orthogonal directions.

## 6.4 Orthogonal standard-deviation projections (False-color) [\(i\)](#)

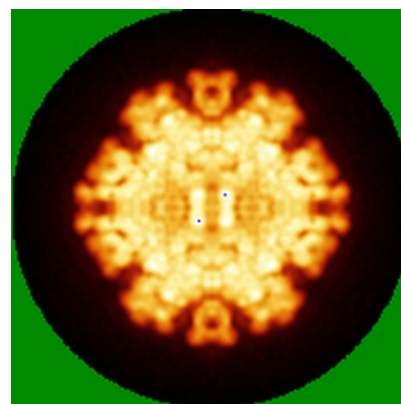
### 6.4.1 Primary map



X



Y

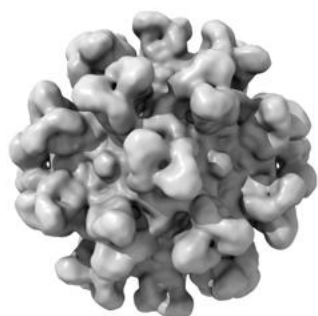


Z

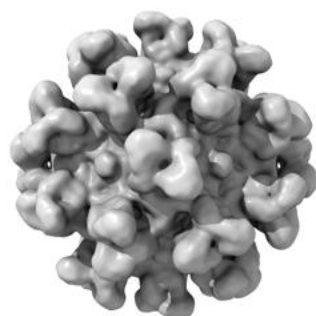
The images above show the map standard deviation projections with false color in three orthogonal directions. Minimum values are shown in green, max in blue, and dark to light orange shades represent small to large values respectively.

## 6.5 Orthogonal surface views [i](#)

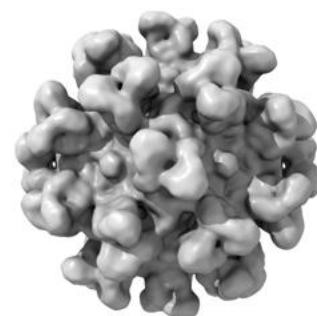
### 6.5.1 Primary map



X



Y



Z

The images above show the 3D surface view of the map at the recommended contour level 1.0. These images, in conjunction with the slice images, may facilitate assessment of whether an appropriate contour level has been provided.

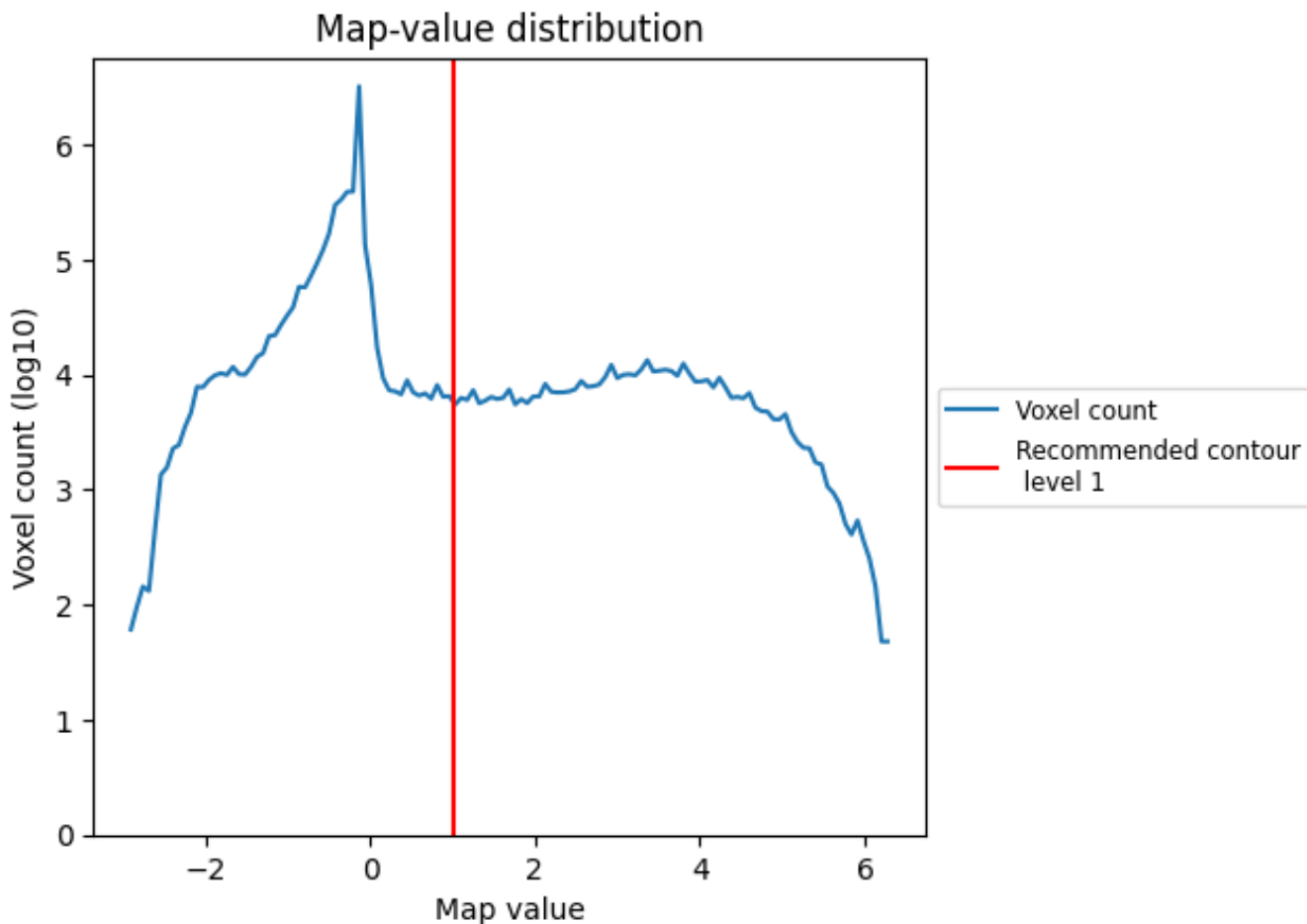
## 6.6 Mask visualisation [i](#)

This section was not generated. No masks/segmentation were deposited.

## 7 Map analysis [i](#)

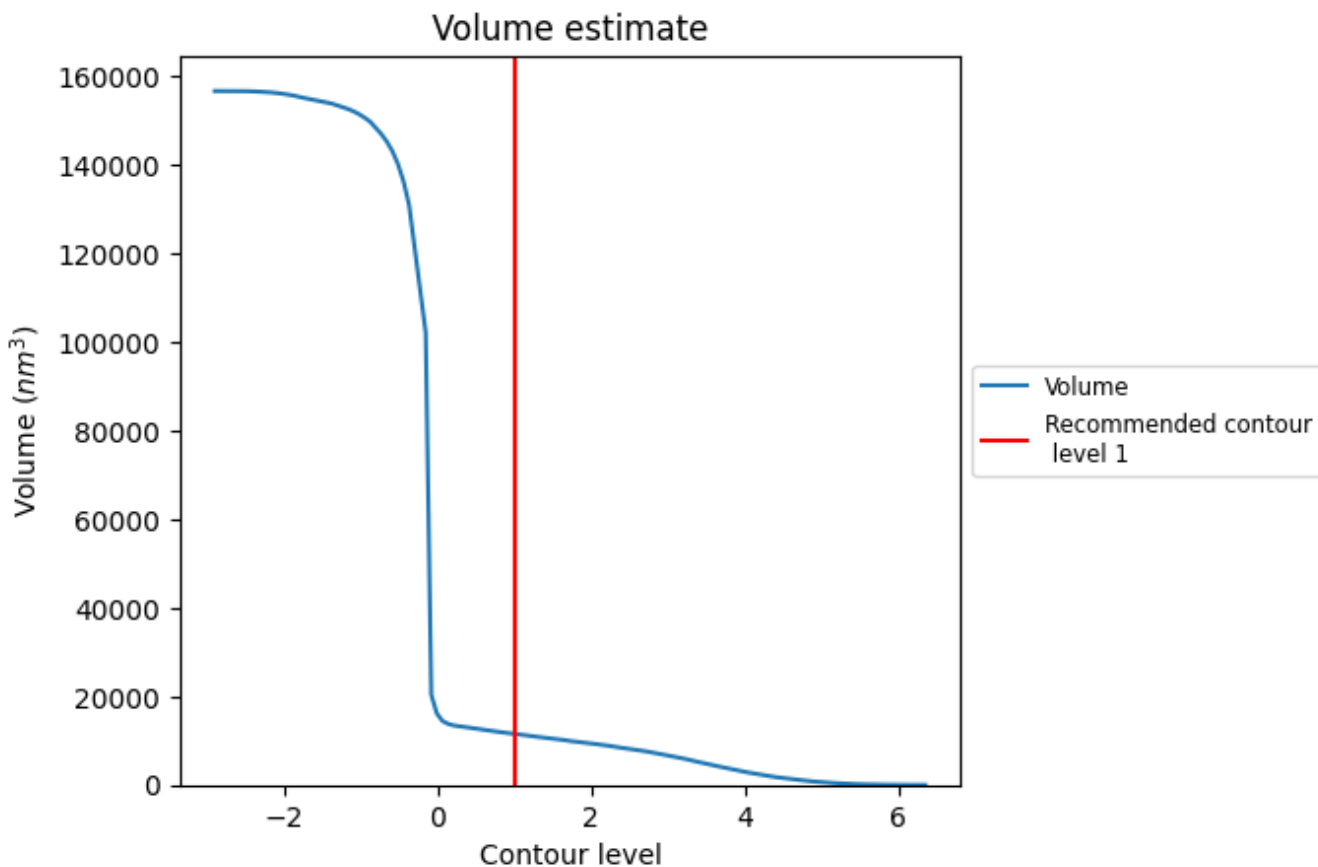
This section contains the results of statistical analysis of the map.

### 7.1 Map-value distribution [i](#)



The map-value distribution is plotted in 128 intervals along the x-axis. The y-axis is logarithmic. A spike in this graph at zero usually indicates that the volume has been masked.

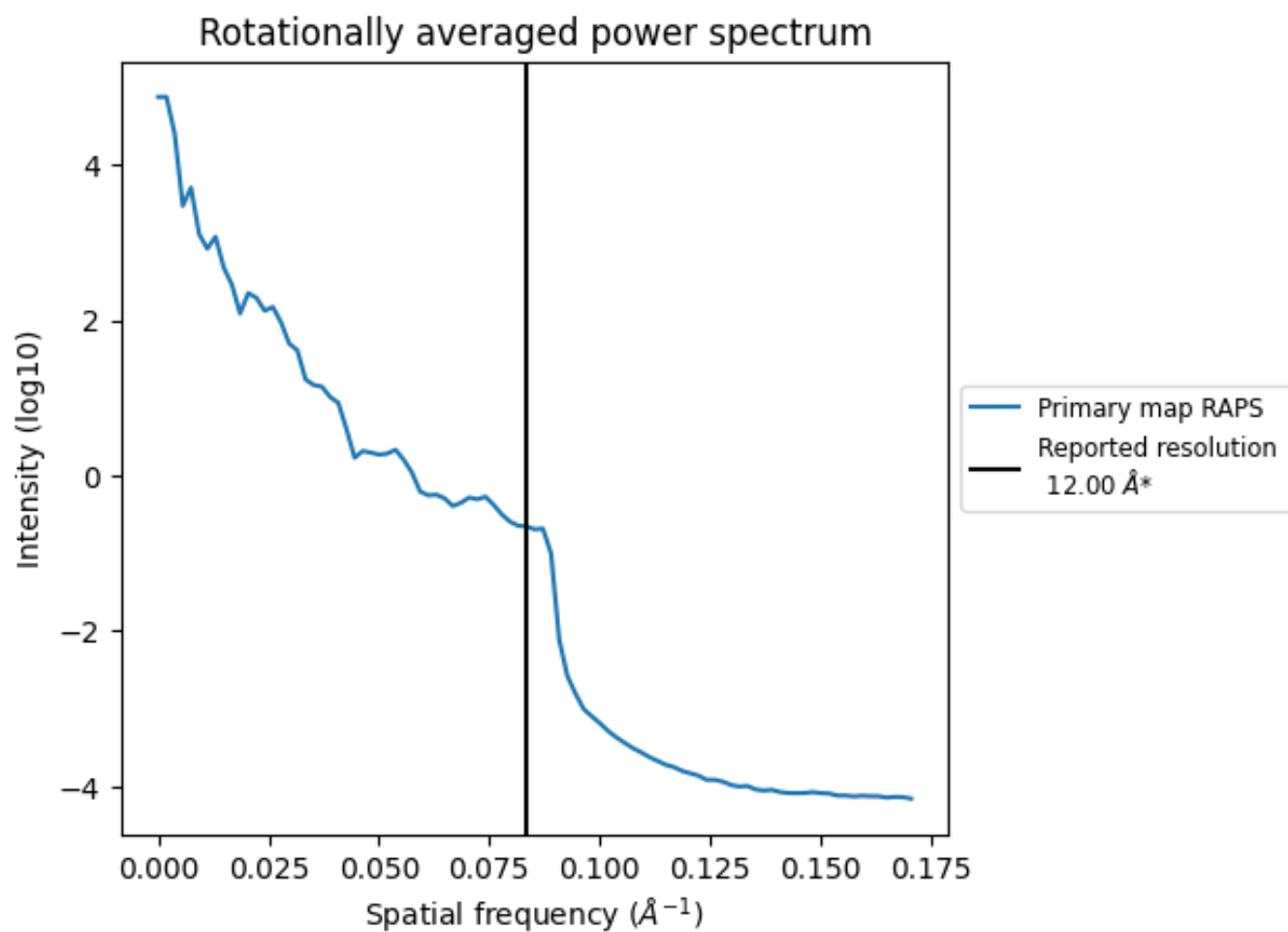
## 7.2 Volume estimate [i](#)



The volume at the recommended contour level is 11531 nm<sup>3</sup>; this corresponds to an approximate mass of 10416 kDa.

The volume estimate graph shows how the enclosed volume varies with the contour level. The recommended contour level is shown as a vertical line and the intersection between the line and the curve gives the volume of the enclosed surface at the given level.

### 7.3 Rotationally averaged power spectrum [i](#)



\*Reported resolution corresponds to spatial frequency of 0.083 Å<sup>-1</sup>

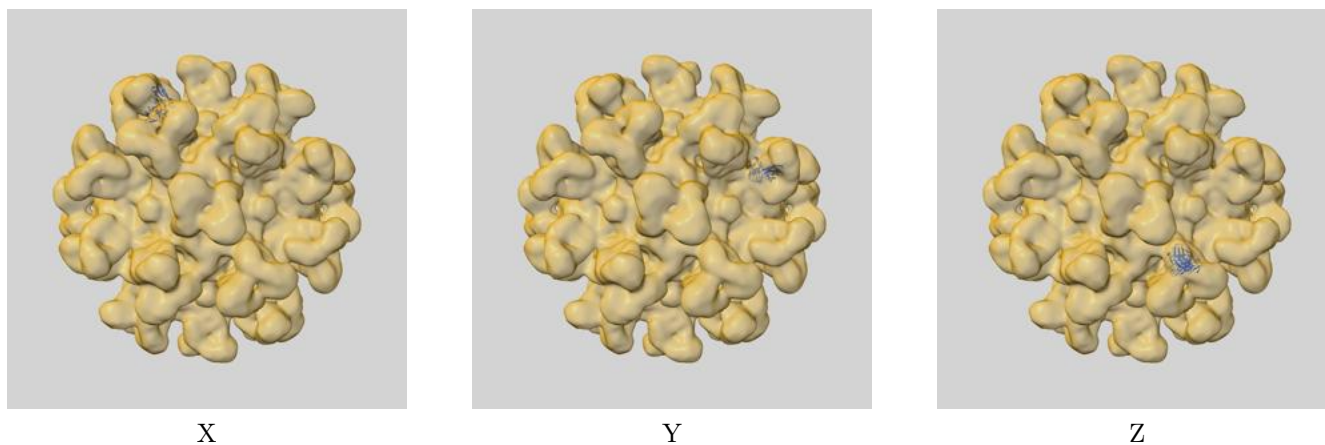
## 8 Fourier-Shell correlation

This section was not generated. No FSC curve or half-maps provided.

## 9 Map-model fit [i](#)

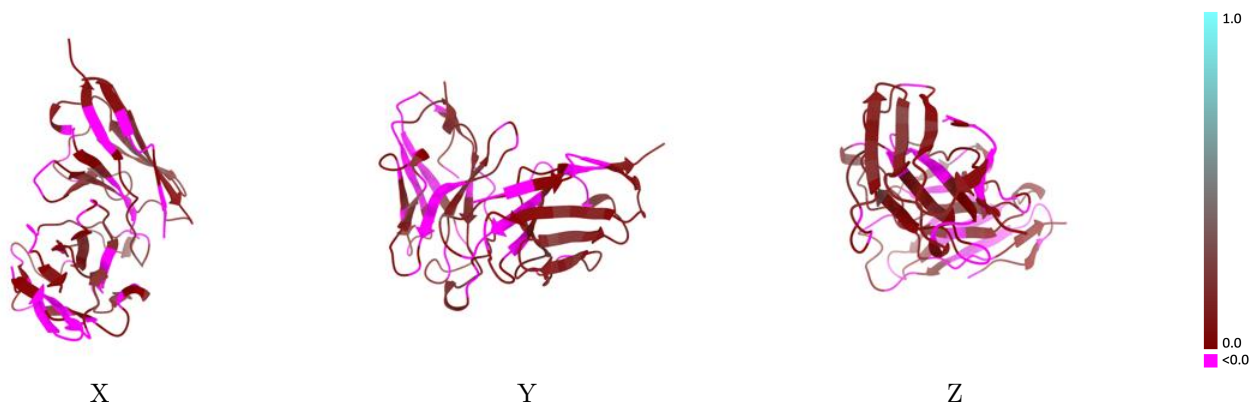
This section contains information regarding the fit between EMDB map EMD-5111 and PDB model 3IY6. Per-residue inclusion information can be found in section 3 on page 4.

### 9.1 Map-model overlay [i](#)



The images above show the 3D surface view of the map at the recommended contour level 1.0 at 50% transparency in yellow overlaid with a ribbon representation of the model coloured in blue. These images allow for the visual assessment of the quality of fit between the atomic model and the map.

## 9.2 Q-score mapped to coordinate model [i](#)

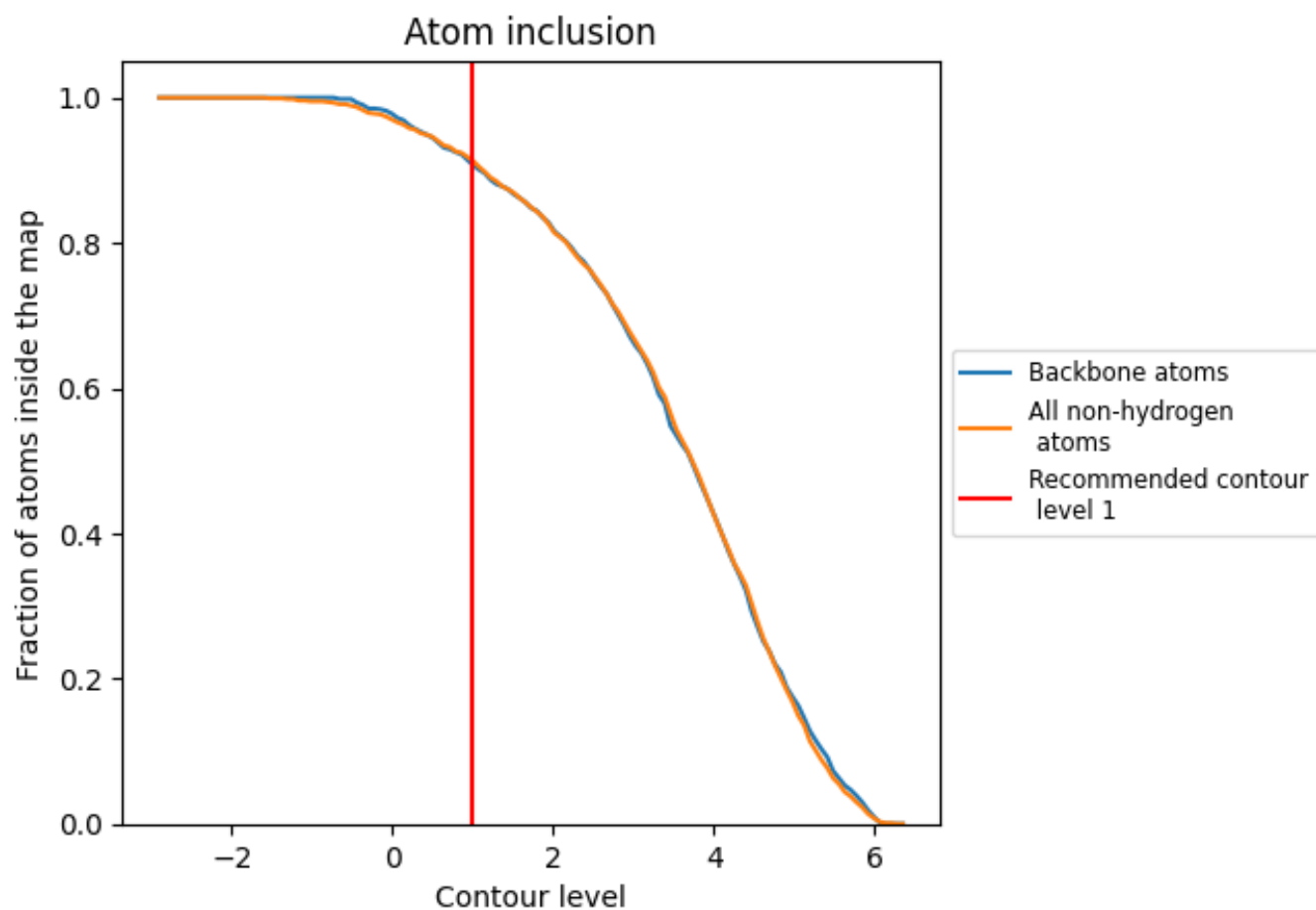


The images above show the model with each residue coloured according to its Q-score. This shows their resolvability in the map with higher Q-score values reflecting better resolvability. Please note: Q-score is calculating the resolvability of atoms, and thus high values are only expected at resolutions at which atoms can be resolved. Low Q-score values may therefore be expected for many entries.

## 9.3 Atom inclusion mapped to coordinate model [i](#)

This section was not generated.






## 9.4 Atom inclusion [i](#)



At the recommended contour level, 91% of all backbone atoms, 91% of all non-hydrogen atoms, are inside the map.

## 9.5 Map-model fit summary [i](#)

The table lists the average atom inclusion at the recommended contour level (1) and Q-score for the entire model and for each chain.

Chain	Atom inclusion	Q-score
All	 0.9130	 0.0530
A	 0.9840	 0.0640
B	 0.8480	 0.0420

