



wwPDB EM Validation Summary Report ⓘ

Feb 12, 2024 – 03:04 PM EST

PDB ID : 3IYF
EMDB ID : EMD-5140
Title : Atomic Model of the Lidless Mm-cpn in the Open State
Authors : Zhang, J.; Baker, M.L.; Schroeder, G.; Douglas, N.R.; Reissmann, S.; Jakana, J.; Dougherty, M.; Fu, C.J.; Levitt, M.; Ludtke, S.J.; Frydman, J.; Chiu, W.
Deposited on : 2009-10-23
Resolution : 8.00 Å(reported)

This is a wwPDB EM Validation Summary Report for a publicly released PDB entry.

We welcome your comments at validation@mail.wwpdb.org

A user guide is available at

<https://www.wwpdb.org/validation/2017/EMValidationReportHelp>

with specific help available everywhere you see the ⓘ symbol.

The types of validation reports are described at

<http://www.wwpdb.org/validation/2017/FAQs#types>.

The following versions of software and data (see [references ⓘ](#)) were used in the production of this report:

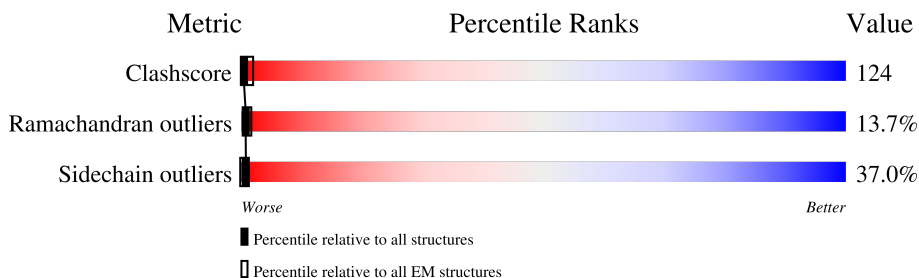
EMDB validation analysis : 0.0.1.dev70
MolProbity : 4.02b-467
Percentile statistics : 20191225.v01 (using entries in the PDB archive December 25th 2019)
MapQ : 1.9.9
Ideal geometry (proteins) : Engh & Huber (2001)
Ideal geometry (DNA, RNA) : Parkinson et al. (1996)
Validation Pipeline (wwPDB-VP) : 2.36

1 Overall quality at a glance

The following experimental techniques were used to determine the structure:
ELECTRON MICROSCOPY

The reported resolution of this entry is 8.00 Å.

Percentile scores (ranging between 0-100) for global validation metrics of the entry are shown in the following graphic. The table shows the number of entries on which the scores are based.



Metric	Whole archive (#Entries)	EM structures (#Entries)
Clashscore	158937	4297
Ramachandran outliers	154571	4023
Sidechain outliers	154315	3826

The table below summarises the geometric issues observed across the polymeric chains and their fit to the map. The red, orange, yellow and green segments of the bar indicate the fraction of residues that contain outliers for ≥ 3 , 2, 1 and 0 types of geometric quality criteria respectively. A grey segment represents the fraction of residues that are not modelled. The numeric value for each fraction is indicated below the corresponding segment, with a dot representing fractions $\leq 5\%$. The upper red bar (where present) indicates the fraction of residues that have poor fit to the EM map (all-atom inclusion $< 40\%$). The numeric value is given above the bar.

Mol	Chain	Length	Quality of chain
1	A	521	
1	B	521	
1	C	521	
1	D	521	
1	E	521	
1	F	521	
1	G	521	
1	H	521	

Continued on next page...

Continued from previous page...

Mol	Chain	Length	Quality of chain
1	I	521	
1	J	521	
1	K	521	
1	L	521	
1	M	521	
1	N	521	
1	O	521	
1	P	521	

2 Entry composition [i](#)

There is only 1 type of molecule in this entry. The entry contains 58624 atoms, of which 0 are hydrogens and 0 are deuteriums.

In the tables below, the AltConf column contains the number of residues with at least one atom in alternate conformation and the Trace column contains the number of residues modelled with at most 2 atoms.

- Molecule 1 is a protein called Chaperonin.

Mol	Chain	Residues	Atoms					AltConf	Trace
			Total	C	N	O	S		
1	A	491	3664	2272	635	733	24	0	0
1	B	491	3664	2272	635	733	24	0	0
1	C	491	3664	2272	635	733	24	0	0
1	D	491	3664	2272	635	733	24	0	0
1	E	491	3664	2272	635	733	24	0	0
1	F	491	3664	2272	635	733	24	0	0
1	G	491	3664	2272	635	733	24	0	0
1	H	491	3664	2272	635	733	24	0	0
1	I	491	3664	2272	635	733	24	0	0
1	J	491	3664	2272	635	733	24	0	0
1	K	491	3664	2272	635	733	24	0	0
1	L	491	3664	2272	635	733	24	0	0
1	M	491	3664	2272	635	733	24	0	0
1	N	491	3664	2272	635	733	24	0	0
1	O	491	3664	2272	635	733	24	0	0
1	P	491	3664	2272	635	733	24	0	0

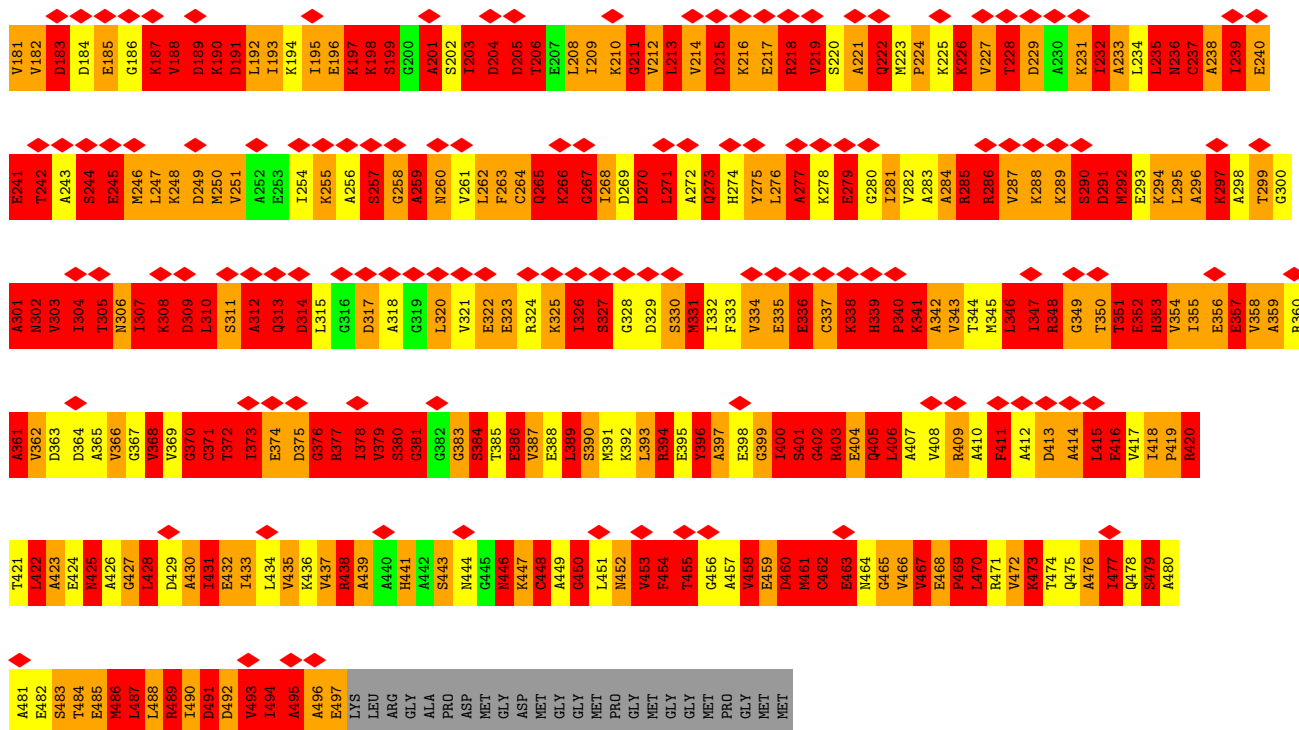
There are 80 discrepancies between the modelled and reference sequences:

Chain	Residue	Modelled	Actual	Comment	Reference
A	241	GLU	-	linker	UNP Q877G8
A	242	THR	-	linker	UNP Q877G8
A	243	ALA	-	linker	UNP Q877G8
A	244	SER	-	linker	UNP Q877G8
A	245	GLU	-	linker	UNP Q877G8
B	241	GLU	-	linker	UNP Q877G8
B	242	THR	-	linker	UNP Q877G8
B	243	ALA	-	linker	UNP Q877G8
B	244	SER	-	linker	UNP Q877G8
B	245	GLU	-	linker	UNP Q877G8
C	241	GLU	-	linker	UNP Q877G8
C	242	THR	-	linker	UNP Q877G8
C	243	ALA	-	linker	UNP Q877G8
C	244	SER	-	linker	UNP Q877G8
C	245	GLU	-	linker	UNP Q877G8
D	241	GLU	-	linker	UNP Q877G8
D	242	THR	-	linker	UNP Q877G8
D	243	ALA	-	linker	UNP Q877G8
D	244	SER	-	linker	UNP Q877G8
D	245	GLU	-	linker	UNP Q877G8
E	241	GLU	-	linker	UNP Q877G8
E	242	THR	-	linker	UNP Q877G8
E	243	ALA	-	linker	UNP Q877G8
E	244	SER	-	linker	UNP Q877G8
E	245	GLU	-	linker	UNP Q877G8
F	241	GLU	-	linker	UNP Q877G8
F	242	THR	-	linker	UNP Q877G8
F	243	ALA	-	linker	UNP Q877G8
F	244	SER	-	linker	UNP Q877G8
F	245	GLU	-	linker	UNP Q877G8
G	241	GLU	-	linker	UNP Q877G8
G	242	THR	-	linker	UNP Q877G8
G	243	ALA	-	linker	UNP Q877G8
G	244	SER	-	linker	UNP Q877G8
G	245	GLU	-	linker	UNP Q877G8
H	241	GLU	-	linker	UNP Q877G8
H	242	THR	-	linker	UNP Q877G8
H	243	ALA	-	linker	UNP Q877G8
H	244	SER	-	linker	UNP Q877G8
H	245	GLU	-	linker	UNP Q877G8
I	241	GLU	-	linker	UNP Q877G8
I	242	THR	-	linker	UNP Q877G8
I	243	ALA	-	linker	UNP Q877G8

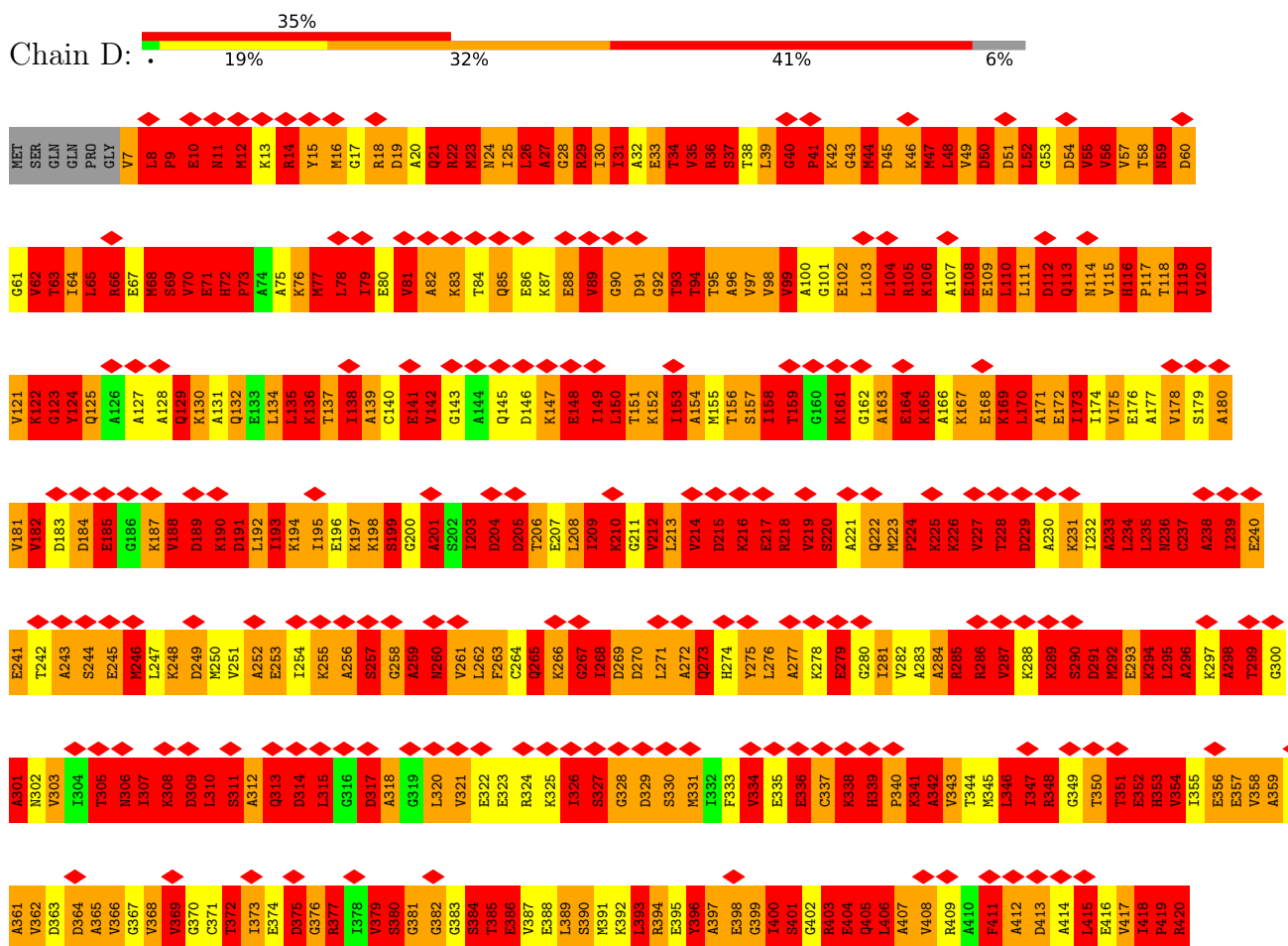
Continued on next page...

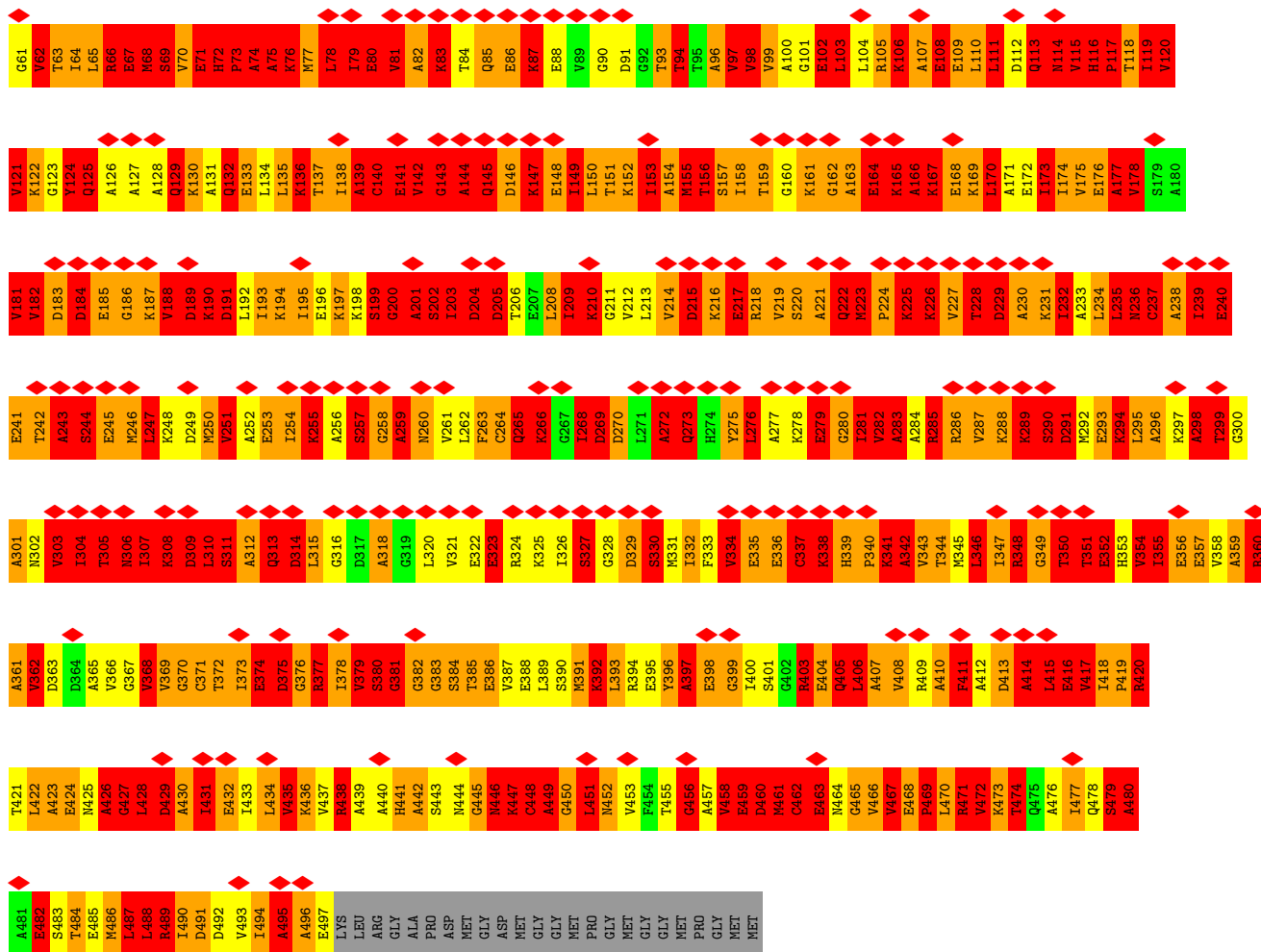
Continued from previous page...

Chain	Residue	Modelled	Actual	Comment	Reference
I	244	SER	-	linker	UNP Q877G8
I	245	GLU	-	linker	UNP Q877G8
J	241	GLU	-	linker	UNP Q877G8
J	242	THR	-	linker	UNP Q877G8
J	243	ALA	-	linker	UNP Q877G8
J	244	SER	-	linker	UNP Q877G8
J	245	GLU	-	linker	UNP Q877G8
K	241	GLU	-	linker	UNP Q877G8
K	242	THR	-	linker	UNP Q877G8
K	243	ALA	-	linker	UNP Q877G8
K	244	SER	-	linker	UNP Q877G8
K	245	GLU	-	linker	UNP Q877G8
L	241	GLU	-	linker	UNP Q877G8
L	242	THR	-	linker	UNP Q877G8
L	243	ALA	-	linker	UNP Q877G8
L	244	SER	-	linker	UNP Q877G8
L	245	GLU	-	linker	UNP Q877G8
M	241	GLU	-	linker	UNP Q877G8
M	242	THR	-	linker	UNP Q877G8
M	243	ALA	-	linker	UNP Q877G8
M	244	SER	-	linker	UNP Q877G8
M	245	GLU	-	linker	UNP Q877G8
N	241	GLU	-	linker	UNP Q877G8
N	242	THR	-	linker	UNP Q877G8
N	243	ALA	-	linker	UNP Q877G8
N	244	SER	-	linker	UNP Q877G8
N	245	GLU	-	linker	UNP Q877G8
O	241	GLU	-	linker	UNP Q877G8
O	242	THR	-	linker	UNP Q877G8
O	243	ALA	-	linker	UNP Q877G8
O	244	SER	-	linker	UNP Q877G8
O	245	GLU	-	linker	UNP Q877G8
P	241	GLU	-	linker	UNP Q877G8
P	242	THR	-	linker	UNP Q877G8
P	243	ALA	-	linker	UNP Q877G8
P	244	SER	-	linker	UNP Q877G8
P	245	GLU	-	linker	UNP Q877G8

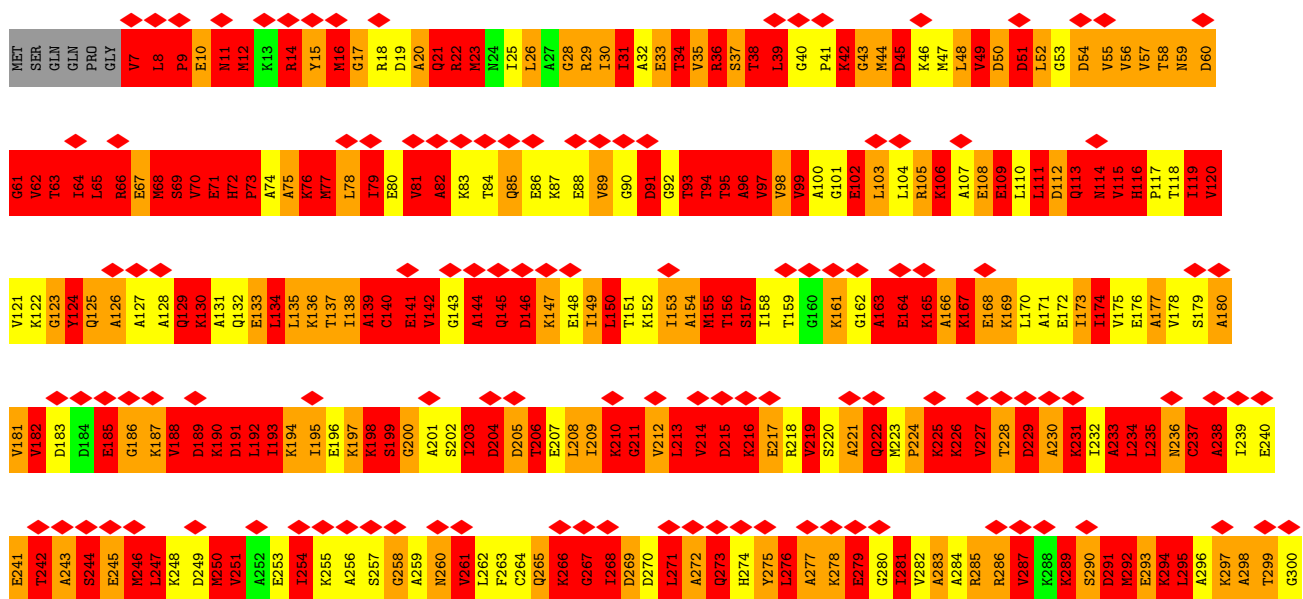
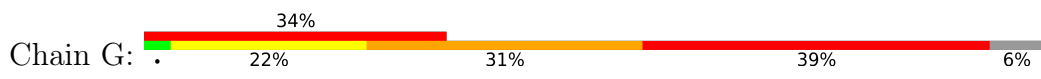


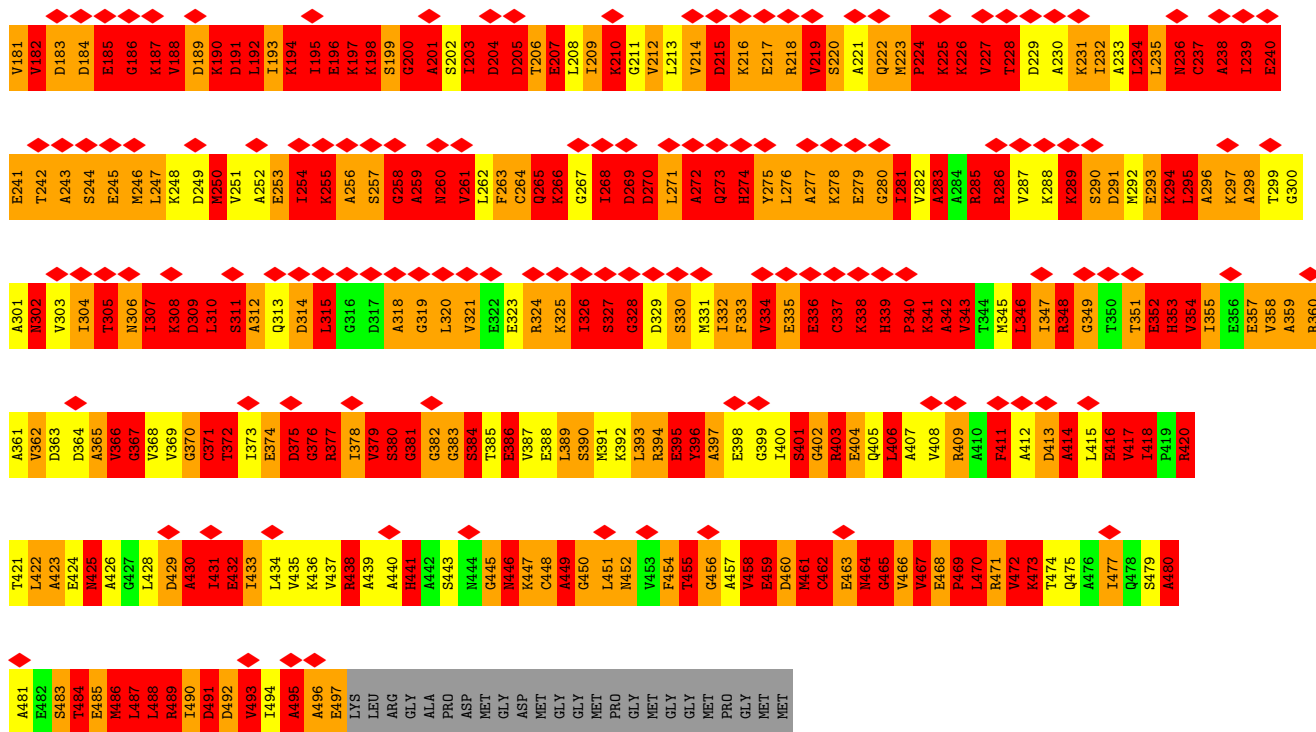
• Molecule 1: Chaperonin



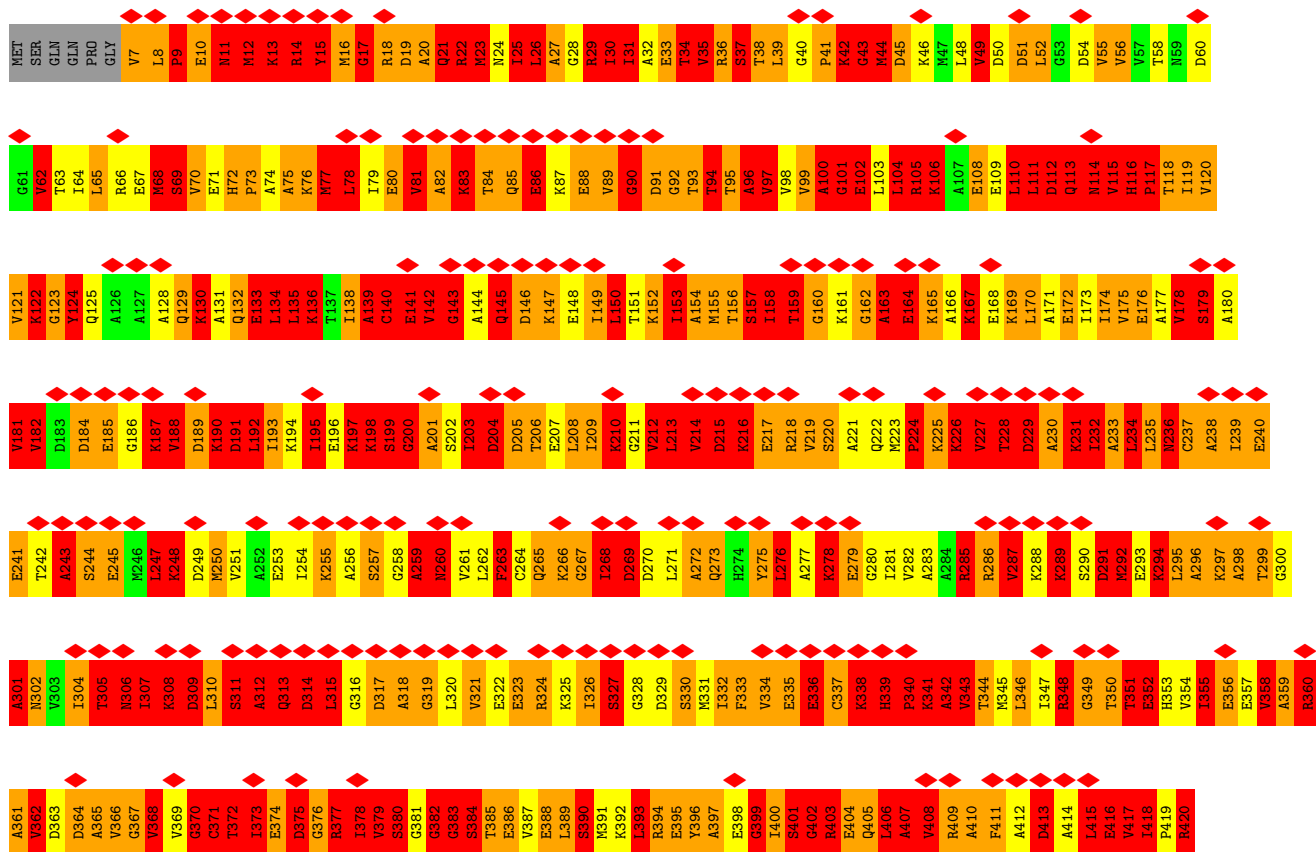
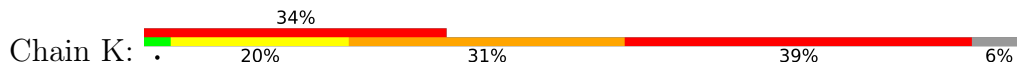


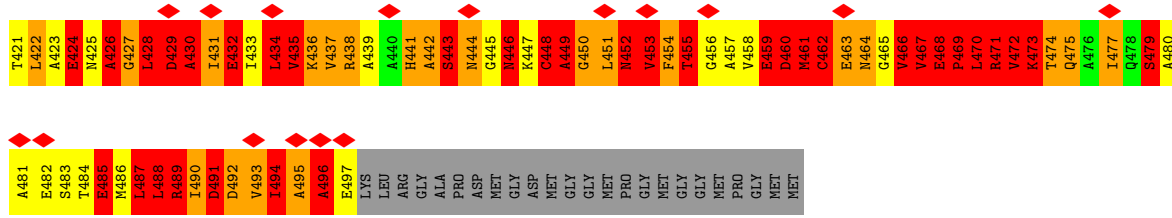
• Molecule 1: Chaperonin



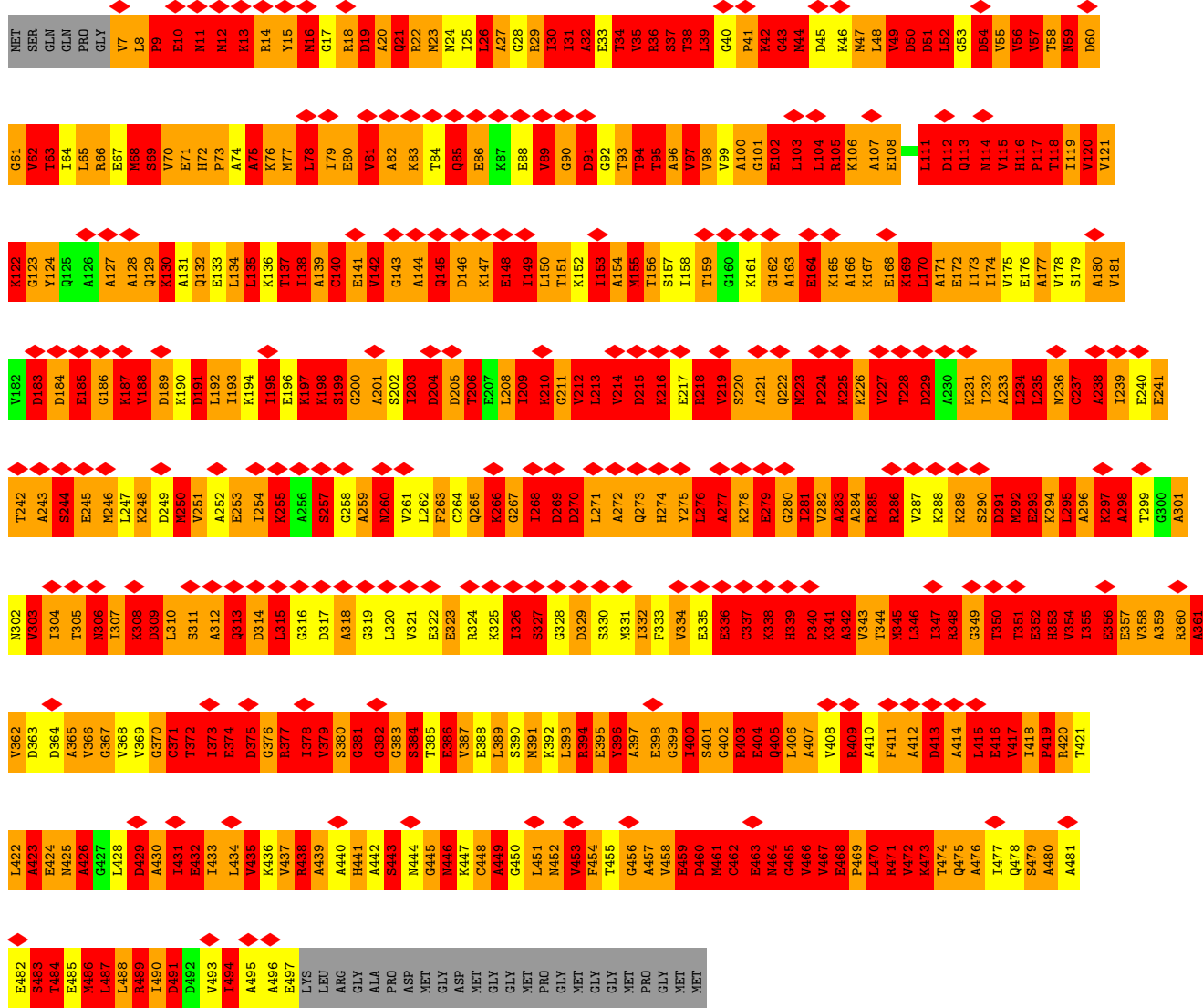
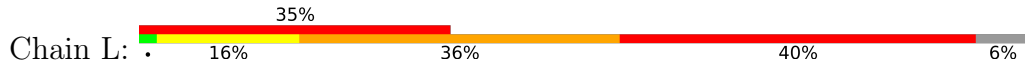


• Molecule 1: Chaperonin

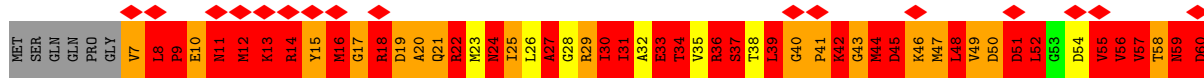
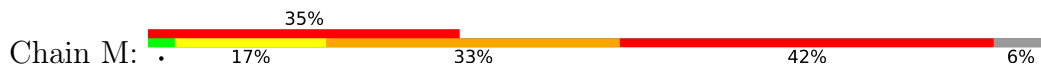


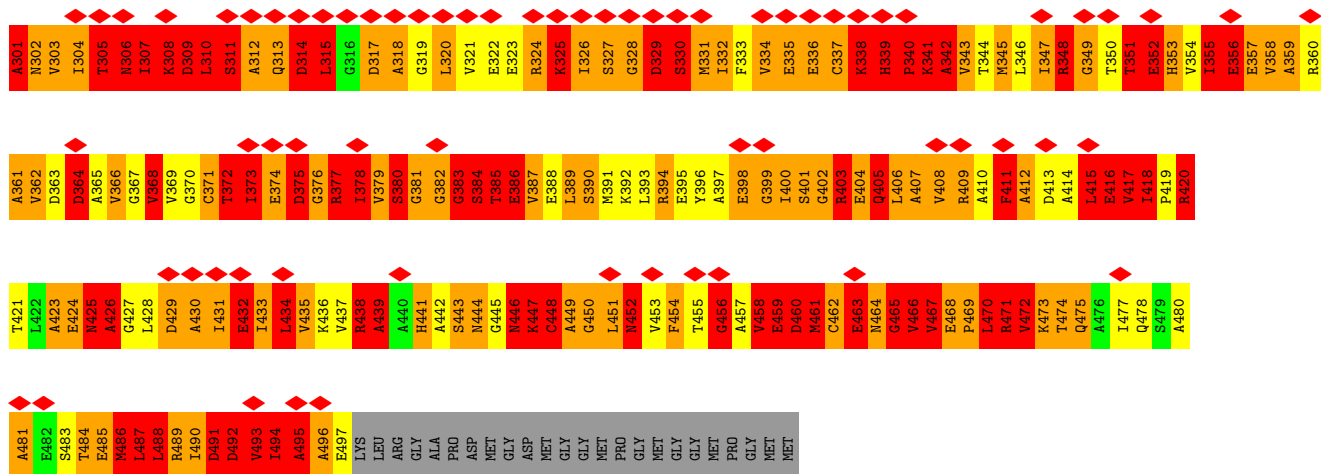


• Molecule 1: Chaperonin

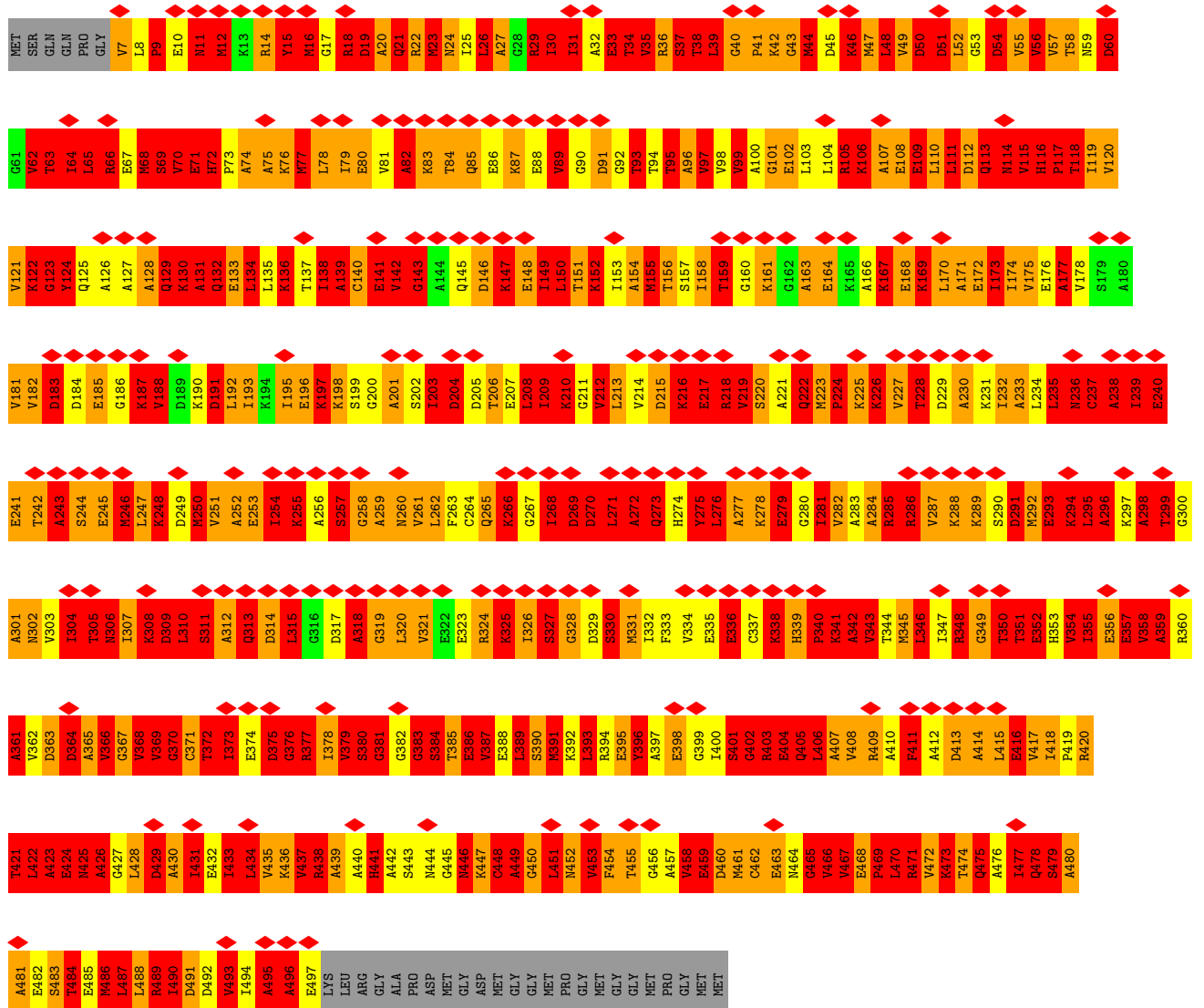


• Molecule 1: Chaperonin





• Molecule 1: Chaperonin



4 Experimental information

Property	Value	Source
EM reconstruction method	SINGLE PARTICLE	Depositor
Imposed symmetry	POINT, D8	Depositor
Number of particles used	Not provided	
Resolution determination method	FSC 0.5 CUT-OFF	Depositor
CTF correction method	Each micrograph	Depositor
Microscope	JEOL 3200FSC	Depositor
Voltage (kV)	300	Depositor
Electron dose ($e^-/\text{\AA}^2$)	20	Depositor
Minimum defocus (nm)	1000	Depositor
Maximum defocus (nm)	3000	Depositor
Magnification	112000	Depositor
Image detector	GATAN ULTRASCAN 4000 (4k x 4k)	Depositor
Maximum map value	2.477	Depositor
Minimum map value	-1.784	Depositor
Average map value	0.034	Depositor
Map value standard deviation	0.191	Depositor
Recommended contour level	0.95	Depositor
Map size (\AA)	319.2, 319.2, 319.2	wwPDB
Map dimensions	240, 240, 240	wwPDB
Map angles ($^\circ$)	90, 90, 90	wwPDB
Pixel spacing (\AA)	1.33, 1.33, 1.33	Depositor

5 Model quality i

5.1 Standard geometry i

The Z score for a bond length (or angle) is the number of standard deviations the observed value is removed from the expected value. A bond length (or angle) with $|Z| > 5$ is considered an outlier worth inspection. RMSZ is the root-mean-square of all Z scores of the bond lengths (or angles).

Mol	Chain	Bond lengths		Bond angles	
		RMSZ	# Z >5	RMSZ	# Z >5
1	A	2.13	73/3685 (2.0%)	3.56	638/4961 (12.9%)
1	B	2.15	80/3685 (2.2%)	3.61	635/4961 (12.8%)
1	C	2.12	79/3685 (2.1%)	3.69	614/4961 (12.4%)
1	D	2.07	58/3685 (1.6%)	3.59	632/4961 (12.7%)
1	E	2.10	73/3685 (2.0%)	3.47	599/4961 (12.1%)
1	F	2.15	89/3685 (2.4%)	3.59	631/4961 (12.7%)
1	G	2.10	70/3685 (1.9%)	3.62	649/4961 (13.1%)
1	H	2.11	70/3685 (1.9%)	3.63	603/4961 (12.2%)
1	I	2.10	62/3685 (1.7%)	3.55	644/4961 (13.0%)
1	J	2.14	86/3685 (2.3%)	3.54	640/4961 (12.9%)
1	K	2.12	80/3685 (2.2%)	3.55	641/4961 (12.9%)
1	L	2.11	75/3685 (2.0%)	3.53	632/4961 (12.7%)
1	M	2.15	75/3685 (2.0%)	3.58	624/4961 (12.6%)
1	N	2.12	65/3685 (1.8%)	3.62	603/4961 (12.2%)
1	O	2.10	73/3685 (2.0%)	3.69	649/4961 (13.1%)
1	P	2.15	89/3685 (2.4%)	3.64	639/4961 (12.9%)
All	All	2.12	1197/58960 (2.0%)	3.59	10073/79376 (12.7%)

Chiral center outliers are detected by calculating the chiral volume of a chiral center and verifying if the center is modelled as a planar moiety or with the opposite hand. A planarity outlier is detected by checking planarity of atoms in a peptide group, atoms in a mainchain group or atoms of a sidechain that are expected to be planar.

Mol	Chain	#Chirality outliers	#Planarity outliers
1	A	71	243
1	B	55	257
1	C	57	264
1	D	60	284
1	E	51	259
1	F	58	270
1	G	63	258
1	H	61	282
1	I	60	252

Continued on next page...

Continued from previous page...

Mol	Chain	#Chirality outliers	#Planarity outliers
1	J	53	260
1	K	57	267
1	L	44	284
1	M	54	279
1	N	50	292
1	O	63	275
1	P	67	288
All	All	924	4314

The worst 5 of 1197 bond length outliers are listed below:

Mol	Chain	Res	Type	Atoms	Z	Observed(Å)	Ideal(Å)
1	N	245	GLU	CD-OE1	10.06	1.36	1.25
1	H	86	GLU	CD-OE1	-9.98	1.14	1.25
1	B	336	GLU	CD-OE2	9.94	1.36	1.25
1	I	164	GLU	CD-OE1	9.93	1.36	1.25
1	A	88	GLU	CD-OE1	9.88	1.36	1.25

The worst 5 of 10073 bond angle outliers are listed below:

Mol	Chain	Res	Type	Atoms	Z	Observed(°)	Ideal(°)
1	O	286	ARG	NE-CZ-NH1	42.76	141.68	120.30
1	N	285	ARG	NE-CZ-NH1	38.96	139.78	120.30
1	H	14	ARG	CD-NE-CZ	38.07	176.90	123.60
1	O	377	ARG	NE-CZ-NH2	-37.58	101.51	120.30
1	D	15	TYR	CB-CG-CD2	37.41	143.44	121.00

5 of 924 chirality outliers are listed below:

Mol	Chain	Res	Type	Atom
1	A	7	VAL	CA
1	A	8	LEU	CA
1	A	10	GLU	CA
1	A	15	TYR	CA
1	A	30	ILE	CB

5 of 4314 planarity outliers are listed below:

Mol	Chain	Res	Type	Group
1	A	10	GLU	Mainchain
1	A	11	ASN	Mainchain
1	A	12	MET	Peptide

Continued on next page...

Continued from previous page...

Mol	Chain	Res	Type	Group
1	A	8	LEU	Peptide
1	A	9	PRO	Peptide

5.2 Too-close contacts [i](#)

In the following table, the Non-H and H(model) columns list the number of non-hydrogen atoms and hydrogen atoms in the chain respectively. The H(added) column lists the number of hydrogen atoms added and optimized by MolProbity. The Clashes column lists the number of clashes within the asymmetric unit, whereas Symm-Clashes lists symmetry-related clashes.

Mol	Chain	Non-H	H(model)	H(added)	Clashes	Symm-Clashes
1	A	3664	0	3787	1077	0
1	B	3664	0	3782	945	0
1	C	3664	0	3787	975	0
1	D	3664	0	3790	980	0
1	E	3664	0	3785	964	0
1	F	3664	0	3789	872	0
1	G	3664	0	3789	910	0
1	H	3664	0	3790	965	0
1	I	3664	0	3786	928	0
1	J	3664	0	3788	945	0
1	K	3664	0	3791	949	0
1	L	3664	0	3788	955	0
1	M	3664	0	3793	1021	0
1	N	3664	0	3791	970	0
1	O	3664	0	3793	952	0
1	P	3664	0	3786	980	0
All	All	58624	0	60615	14494	0

The all-atom clashscore is defined as the number of clashes found per 1000 atoms (including hydrogen atoms). The all-atom clashscore for this structure is 124.

The worst 5 of 14494 close contacts within the same asymmetric unit are listed below, sorted by their clash magnitude.

Atom-1	Atom-2	Interatomic distance (Å)	Clash overlap (Å)
1:F:461:MET:HA	1:F:461:MET:CE	1.29	1.55
1:H:165:LYS:HA	1:H:165:LYS:NZ	1.30	1.45
1:N:403:ARG:HH11	1:N:403:ARG:CG	1.06	1.44
1:M:420:ARG:HH11	1:M:420:ARG:CB	1.31	1.41
1:B:488:LEU:O	1:B:488:LEU:CD2	1.68	1.40

There are no symmetry-related clashes.

5.3 Torsion angles [i](#)

5.3.1 Protein backbone [i](#)

In the following table, the Percentiles column shows the percent Ramachandran outliers of the chain as a percentile score with respect to all PDB entries followed by that with respect to all EM entries.

The Analysed column shows the number of residues for which the backbone conformation was analysed, and the total number of residues.

Mol	Chain	Analysed	Favoured	Allowed	Outliers	Percentiles	
1	A	489/521 (94%)	345 (71%)	78 (16%)	66 (14%)	0	4
1	B	489/521 (94%)	343 (70%)	85 (17%)	61 (12%)	0	5
1	C	489/521 (94%)	346 (71%)	68 (14%)	75 (15%)	0	3
1	D	489/521 (94%)	339 (69%)	80 (16%)	70 (14%)	0	4
1	E	489/521 (94%)	339 (69%)	80 (16%)	70 (14%)	0	4
1	F	489/521 (94%)	345 (71%)	74 (15%)	70 (14%)	0	4
1	G	489/521 (94%)	347 (71%)	77 (16%)	65 (13%)	0	5
1	H	489/521 (94%)	334 (68%)	84 (17%)	71 (14%)	0	4
1	I	489/521 (94%)	343 (70%)	78 (16%)	68 (14%)	0	4
1	J	489/521 (94%)	350 (72%)	71 (14%)	68 (14%)	0	4
1	K	489/521 (94%)	353 (72%)	81 (17%)	55 (11%)	0	7
1	L	489/521 (94%)	337 (69%)	89 (18%)	63 (13%)	0	5
1	M	489/521 (94%)	352 (72%)	76 (16%)	61 (12%)	0	5
1	N	489/521 (94%)	348 (71%)	72 (15%)	69 (14%)	0	4
1	O	489/521 (94%)	343 (70%)	73 (15%)	73 (15%)	0	3
1	P	489/521 (94%)	339 (69%)	80 (16%)	70 (14%)	0	4
All	All	7824/8336 (94%)	5503 (70%)	1246 (16%)	1075 (14%)	1	4

5 of 1075 Ramachandran outliers are listed below:

Mol	Chain	Res	Type
1	A	8	LEU
1	A	9	PRO
1	A	10	GLU
1	A	16	MET

Continued on next page...

Continued from previous page...

Mol	Chain	Res	Type
1	A	62	VAL

5.3.2 Protein sidechains [i](#)

In the following table, the Percentiles column shows the percent sidechain outliers of the chain as a percentile score with respect to all PDB entries followed by that with respect to all EM entries.

The Analysed column shows the number of residues for which the sidechain conformation was analysed, and the total number of residues.

Mol	Chain	Analysed	Rotameric	Outliers	Percentiles	
1	A	393/413 (95%)	261 (66%)	132 (34%)	0	2
1	B	393/413 (95%)	245 (62%)	148 (38%)	0	0
1	C	393/413 (95%)	261 (66%)	132 (34%)	0	2
1	D	393/413 (95%)	240 (61%)	153 (39%)	0	0
1	E	393/413 (95%)	248 (63%)	145 (37%)	0	0
1	F	393/413 (95%)	241 (61%)	152 (39%)	0	0
1	G	393/413 (95%)	252 (64%)	141 (36%)	0	1
1	H	393/413 (95%)	240 (61%)	153 (39%)	0	0
1	I	393/413 (95%)	247 (63%)	146 (37%)	0	0
1	J	393/413 (95%)	258 (66%)	135 (34%)	0	1
1	K	393/413 (95%)	257 (65%)	136 (35%)	0	1
1	L	393/413 (95%)	249 (63%)	144 (37%)	0	1
1	M	393/413 (95%)	237 (60%)	156 (40%)	0	0
1	N	393/413 (95%)	251 (64%)	142 (36%)	0	1
1	O	393/413 (95%)	240 (61%)	153 (39%)	0	0
1	P	393/413 (95%)	233 (59%)	160 (41%)	0	0
All	All	6288/6608 (95%)	3960 (63%)	2328 (37%)	1	0

5 of 2328 residues with a non-rotameric sidechain are listed below:

Mol	Chain	Res	Type
1	M	446	ASN
1	P	384	SER
1	N	120	VAL
1	M	434	LEU

Continued on next page...

Continued from previous page...

Mol	Chain	Res	Type
1	O	224	PRO

Sometimes sidechains can be flipped to improve hydrogen bonding and reduce clashes. 5 of 177 such sidechains are listed below:

Mol	Chain	Res	Type
1	K	113	GLN
1	M	441	HIS
1	K	265	GLN
1	L	339	HIS
1	N	339	HIS

5.3.3 RNA [i](#)

There are no RNA molecules in this entry.

5.4 Non-standard residues in protein, DNA, RNA chains [i](#)

There are no non-standard protein/DNA/RNA residues in this entry.

5.5 Carbohydrates [i](#)

There are no monosaccharides in this entry.

5.6 Ligand geometry [i](#)

There are no ligands in this entry.

5.7 Other polymers [i](#)

There are no such residues in this entry.

5.8 Polymer linkage issues [i](#)

There are no chain breaks in this entry.

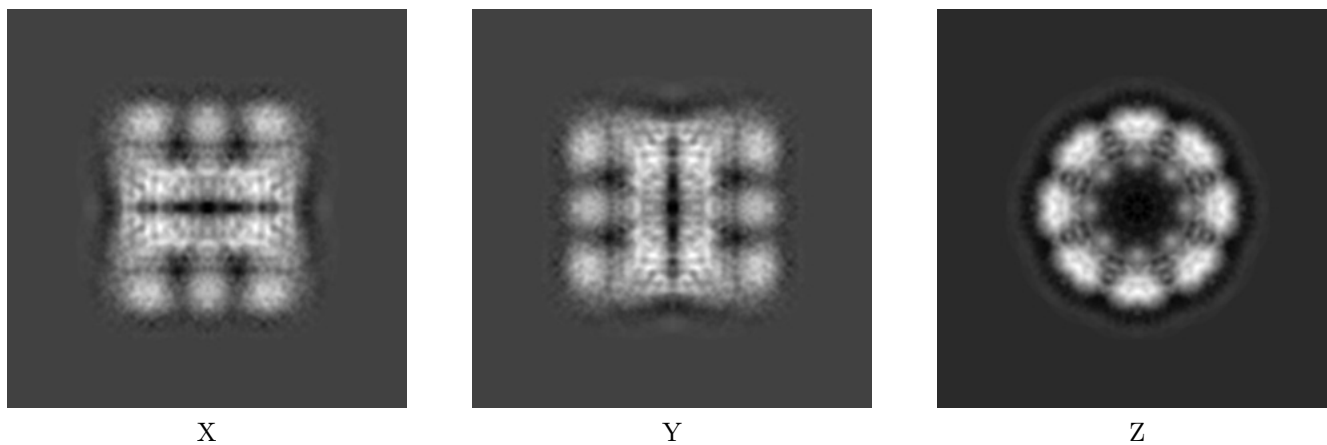
6 Map visualisation [i](#)

This section contains visualisations of the EMDB entry EMD-5140. These allow visual inspection of the internal detail of the map and identification of artifacts.

No raw map or half-maps were deposited for this entry and therefore no images, graphs, etc. pertaining to the raw map can be shown.

6.1 Orthogonal projections [i](#)

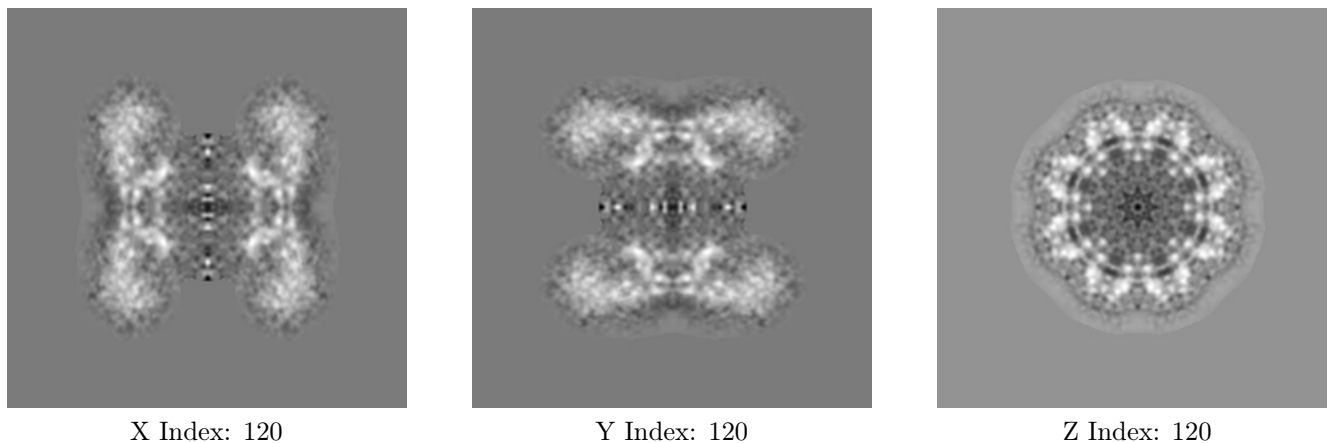
6.1.1 Primary map



The images above show the map projected in three orthogonal directions.

6.2 Central slices [i](#)

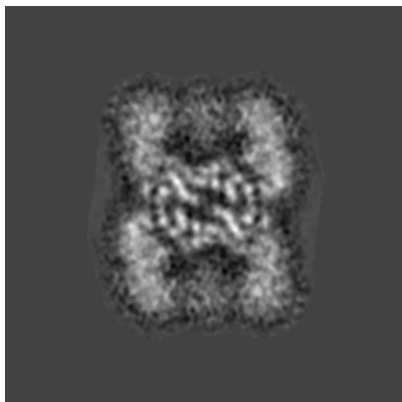
6.2.1 Primary map



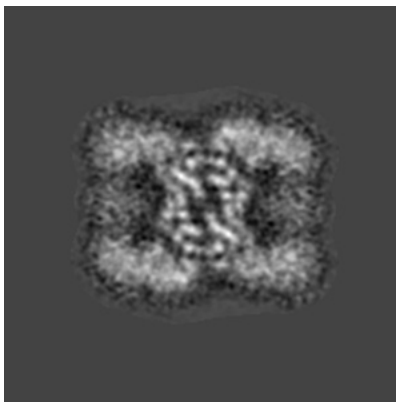
The images above show central slices of the map in three orthogonal directions.

6.3 Largest variance slices [i](#)

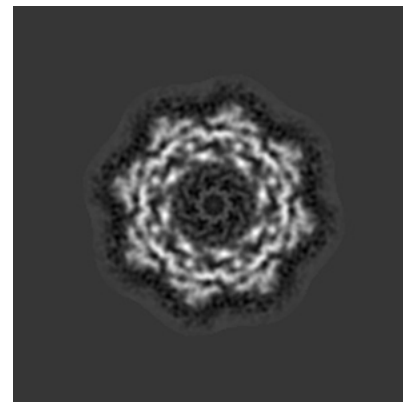
6.3.1 Primary map



X Index: 85



Y Index: 155

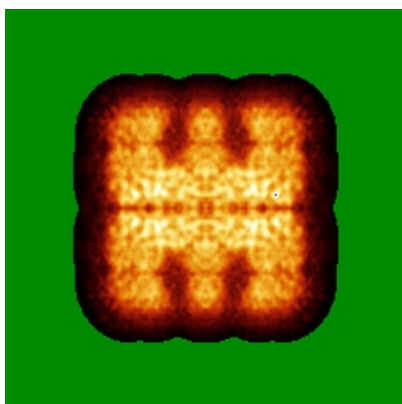


Z Index: 129

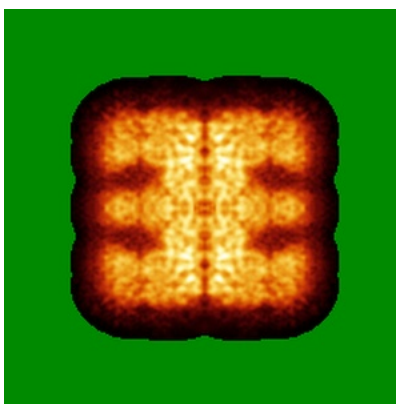
The images above show the largest variance slices of the map in three orthogonal directions.

6.4 Orthogonal standard-deviation projections (False-color) [i](#)

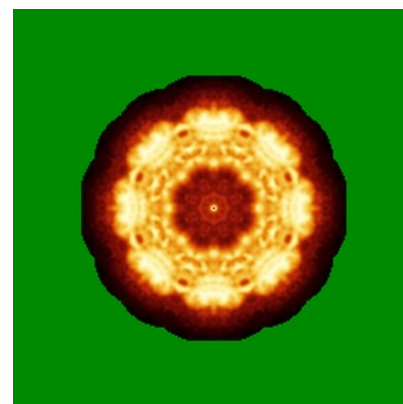
6.4.1 Primary map



X



Y

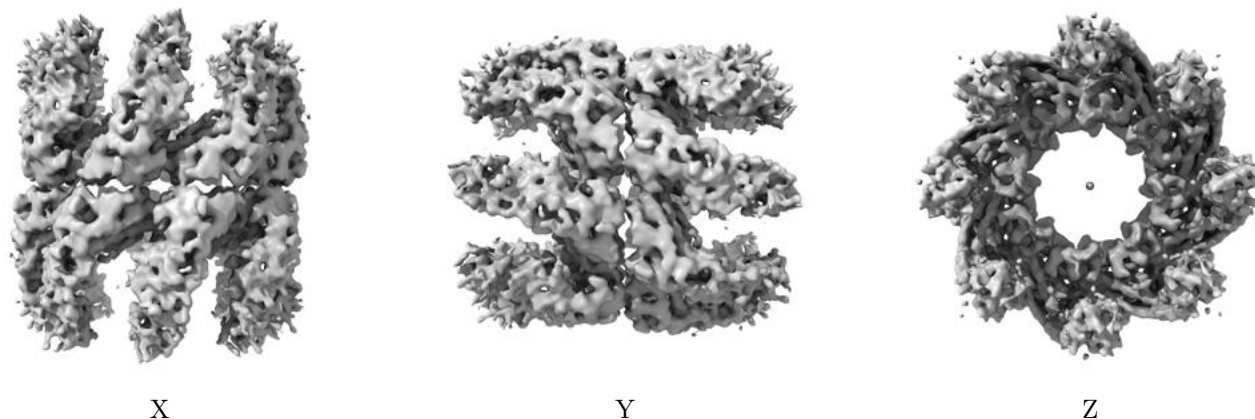


Z

The images above show the map standard deviation projections with false color in three orthogonal directions. Minimum values are shown in green, max in blue, and dark to light orange shades represent small to large values respectively.

6.5 Orthogonal surface views [i](#)

6.5.1 Primary map



The images above show the 3D surface view of the map at the recommended contour level 0.95. These images, in conjunction with the slice images, may facilitate assessment of whether an appropriate contour level has been provided.

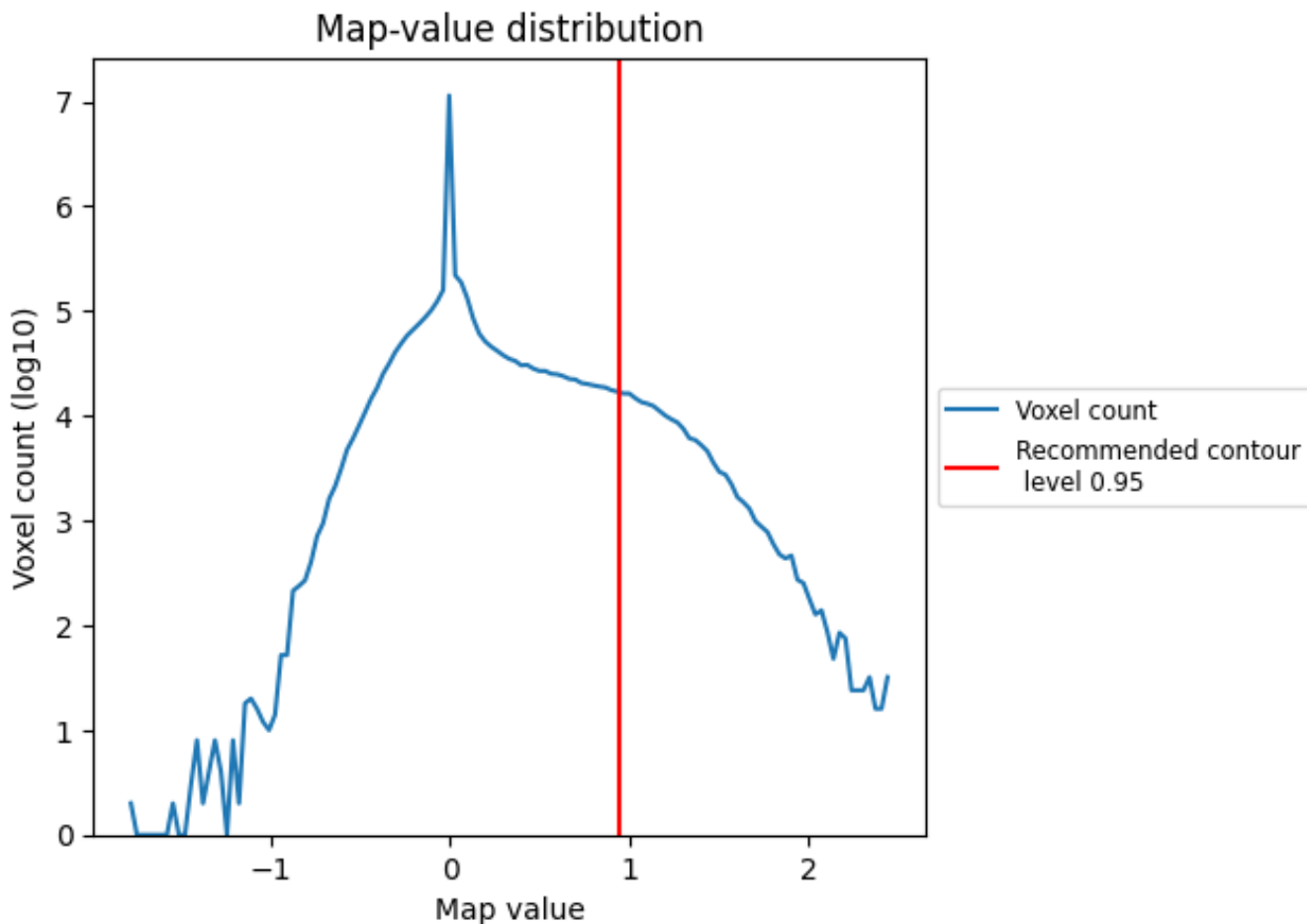
6.6 Mask visualisation [i](#)

This section was not generated. No masks/segmentation were deposited.

7 Map analysis [i](#)

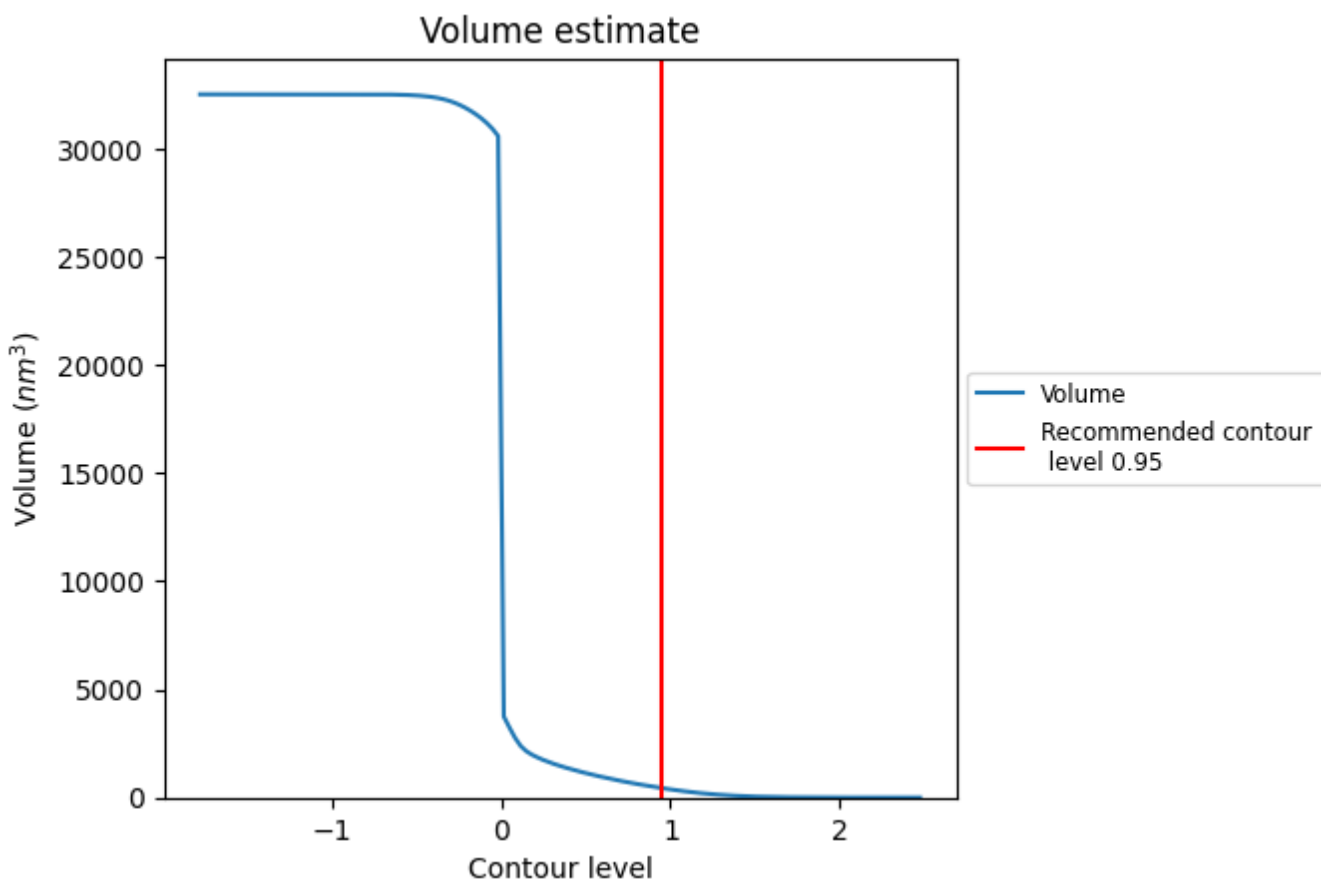
This section contains the results of statistical analysis of the map.

7.1 Map-value distribution [i](#)



The map-value distribution is plotted in 128 intervals along the x-axis. The y-axis is logarithmic. A spike in this graph at zero usually indicates that the volume has been masked.

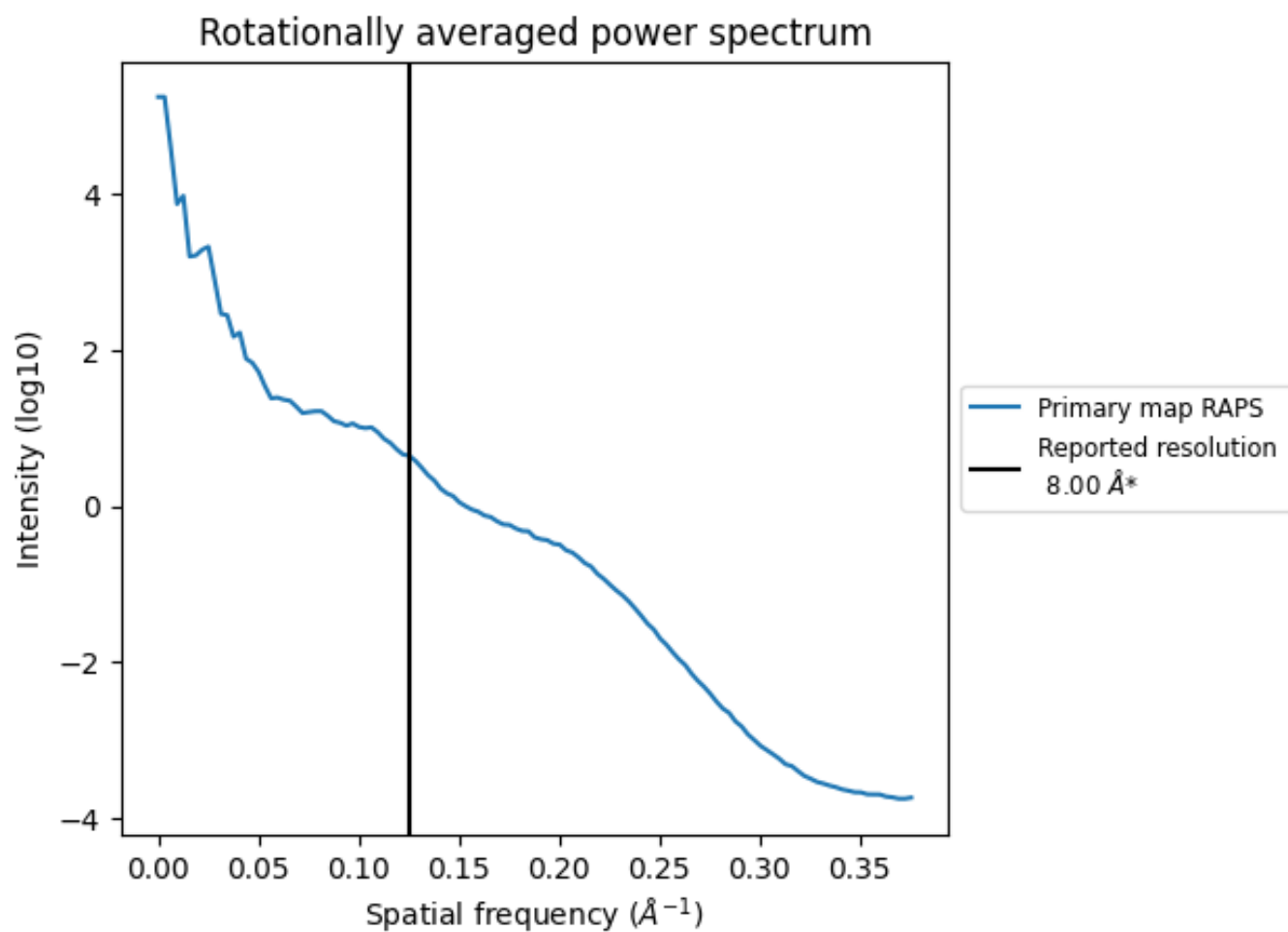
7.2 Volume estimate [\(i\)](#)



The volume at the recommended contour level is 437 nm³; this corresponds to an approximate mass of 395 kDa.

The volume estimate graph shows how the enclosed volume varies with the contour level. The recommended contour level is shown as a vertical line and the intersection between the line and the curve gives the volume of the enclosed surface at the given level.

7.3 Rotationally averaged power spectrum [i](#)



*Reported resolution corresponds to spatial frequency of 0.125 Å⁻¹

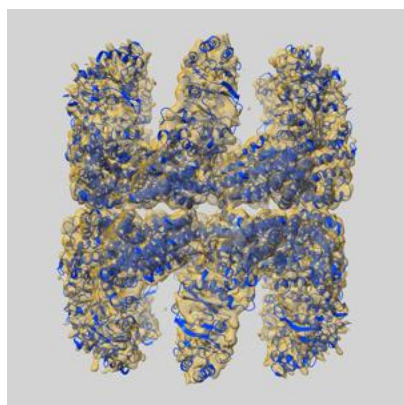
8 Fourier-Shell correlation

This section was not generated. No FSC curve or half-maps provided.

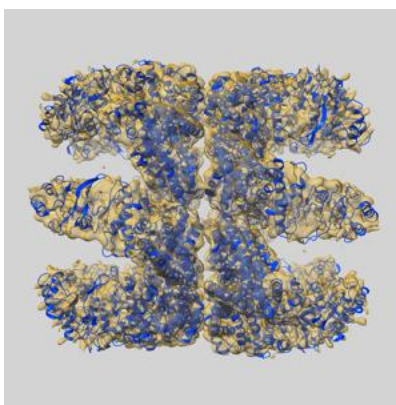
9 Map-model fit [i](#)

This section contains information regarding the fit between EMDB map EMD-5140 and PDB model 3IYF. Per-residue inclusion information can be found in section 3 on page 7.

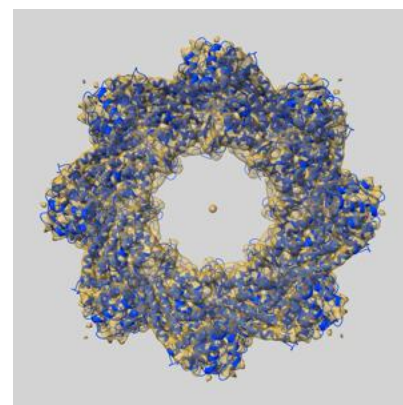
9.1 Map-model overlay [i](#)



X



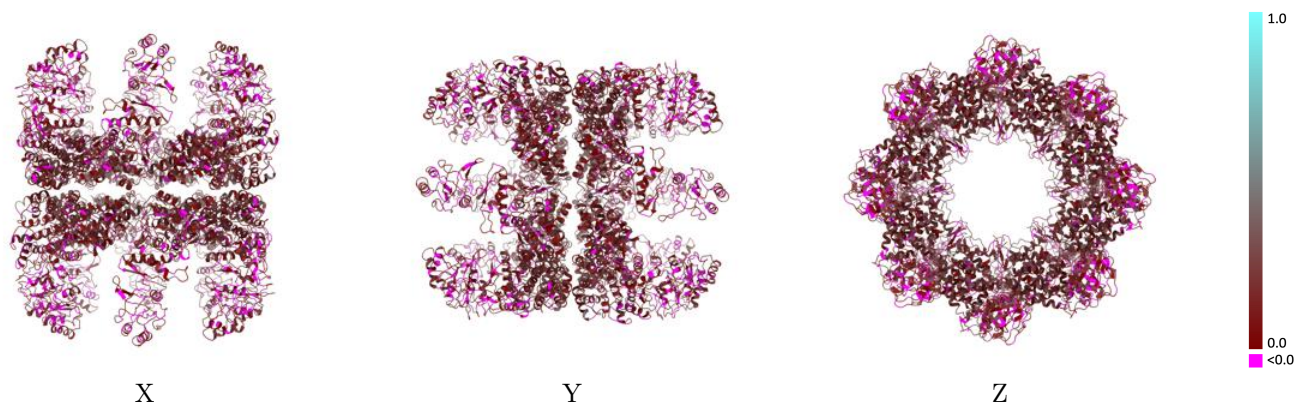
Y



Z

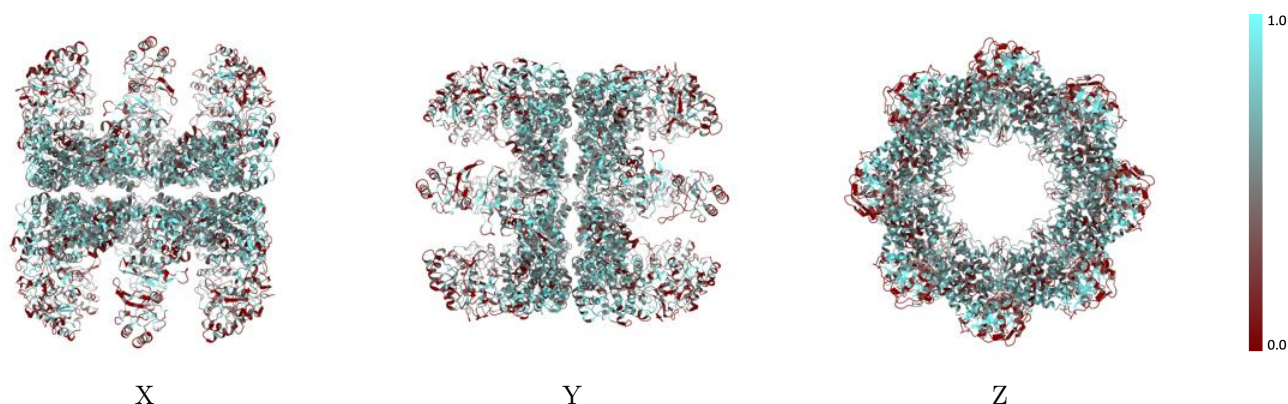
The images above show the 3D surface view of the map at the recommended contour level 0.95 at 50% transparency in yellow overlaid with a ribbon representation of the model coloured in blue. These images allow for the visual assessment of the quality of fit between the atomic model and the map.

9.2 Q-score mapped to coordinate model [i](#)



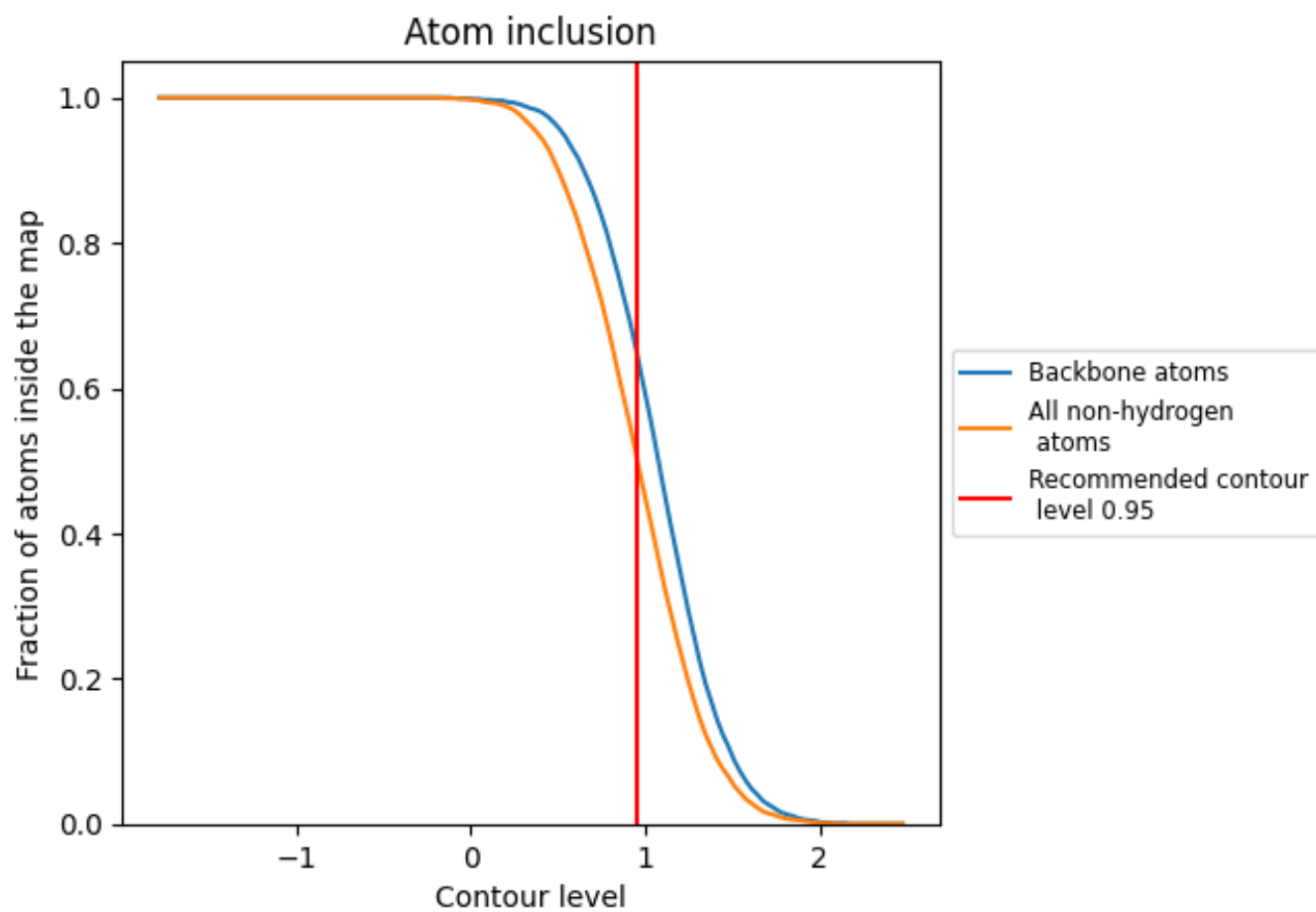
The images above show the model with each residue coloured according to its Q-score. This shows their resolvability in the map with higher Q-score values reflecting better resolvability. Please note: Q-score is calculating the resolvability of atoms, and thus high values are only expected at resolutions at which atoms can be resolved. Low Q-score values may therefore be expected for many entries.

9.3 Atom inclusion mapped to coordinate model [i](#)



The images above show the model with each residue coloured according to its atom inclusion. This shows to what extent they are inside the map at the recommended contour level (0.95).



































9.4 Atom inclusion [i](#)



At the recommended contour level, 65% of all backbone atoms, 51% of all non-hydrogen atoms, are inside the map.

9.5 Map-model fit summary

The table lists the average atom inclusion at the recommended contour level (0.95) and Q-score for the entire model and for each chain.

Chain	Atom inclusion	Q-score
All	 0.5070	 0.1510
A	 0.5090	 0.1500
B	 0.5100	 0.1480
C	 0.5120	 0.1510
D	 0.5080	 0.1520
E	 0.5070	 0.1550
F	 0.5030	 0.1500
G	 0.4980	 0.1500
H	 0.5090	 0.1520
I	 0.5030	 0.1510
J	 0.5070	 0.1510
K	 0.5060	 0.1510
L	 0.5090	 0.1490
M	 0.5100	 0.1540
N	 0.5040	 0.1530
O	 0.5080	 0.1490
P	 0.5080	 0.1530

