



Full wwPDB X-ray Structure Validation Report ⓘ

Oct 31, 2023 – 04:20 PM EDT

PDB ID : 3OIX
Title : Crystal structure of the putative dihydroorotate dehydrogenase from Streptococcus mutans
Authors : Liu, Y.; Gao, Z.Q.; Liu, C.P.; Dong, Y.H.
Deposited on : 2010-08-20
Resolution : 2.40 Å(reported)

This is a Full wwPDB X-ray Structure Validation Report for a publicly released PDB entry.

We welcome your comments at validation@mail.wwpdb.org

A user guide is available at

<https://www.wwpdb.org/validation/2017/XrayValidationReportHelp>

with specific help available everywhere you see the ⓘ symbol.

The types of validation reports are described at

<http://www.wwpdb.org/validation/2017/FAQs#types>.

The following versions of software and data (see [references ⓘ](#)) were used in the production of this report:

MolProbity : 4.02b-467
Mogul : 1.8.5 (274361), CSD as541be (2020)
Xtriage (Phenix) : 1.13
EDS : 2.36
buster-report : 1.1.7 (2018)
Percentile statistics : 20191225.v01 (using entries in the PDB archive December 25th 2019)
Refmac : 5.8.0158
CCP4 : 7.0.044 (Gargrove)
Ideal geometry (proteins) : Engh & Huber (2001)
Ideal geometry (DNA, RNA) : Parkinson et al. (1996)
Validation Pipeline (wwPDB-VP) : 2.36

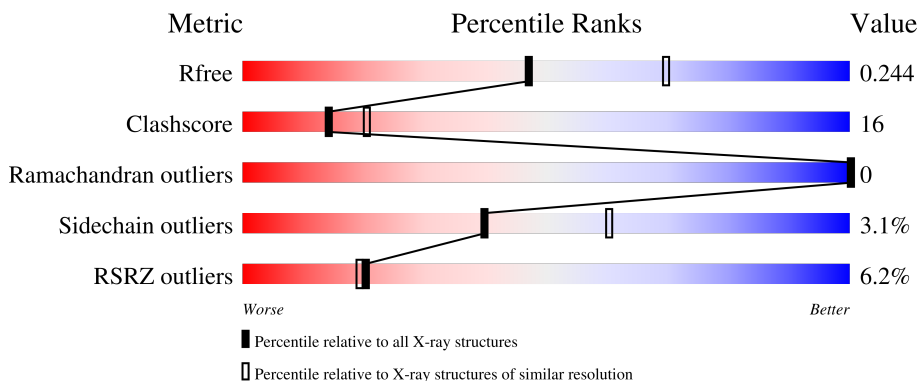
1 Overall quality at a glance i

The following experimental techniques were used to determine the structure:

X-RAY DIFFRACTION

The reported resolution of this entry is 2.40 Å.

Percentile scores (ranging between 0-100) for global validation metrics of the entry are shown in the following graphic. The table shows the number of entries on which the scores are based.



Metric	Whole archive (#Entries)	Similar resolution (#Entries, resolution range(Å))
R_{free}	130704	3907 (2.40-2.40)
Clashscore	141614	4398 (2.40-2.40)
Ramachandran outliers	138981	4318 (2.40-2.40)
Sidechain outliers	138945	4319 (2.40-2.40)
RSRZ outliers	127900	3811 (2.40-2.40)

The table below summarises the geometric issues observed across the polymeric chains and their fit to the electron density. The red, orange, yellow and green segments of the lower bar indicate the fraction of residues that contain outliers for ≥ 3 , 2, 1 and 0 types of geometric quality criteria respectively. A grey segment represents the fraction of residues that are not modelled. The numeric value for each fraction is indicated below the corresponding segment, with a dot representing fractions $\leq 5\%$. The upper red bar (where present) indicates the fraction of residues that have poor fit to the electron density. The numeric value is given above the bar.

Mol	Chain	Length	Quality of chain
1	A	345	<div style="display: flex; align-items: center;"> <div style="width: 10%; height: 10px; background-color: red; margin-right: 5px;"></div> <div style="width: 68%; height: 10px; background-color: green; margin-right: 5px;"></div> <div style="width: 20%; height: 10px; background-color: yellow; margin-right: 5px;"></div> <div style="width: 10%; height: 10px; background-color: grey;"></div> </div> <p style="margin-left: 20px;">68% 20% • 10%</p>
1	B	345	<div style="display: flex; align-items: center;"> <div style="width: 11%; height: 10px; background-color: red; margin-right: 5px;"></div> <div style="width: 69%; height: 10px; background-color: green; margin-right: 5px;"></div> <div style="width: 19%; height: 10px; background-color: yellow; margin-right: 5px;"></div> <div style="width: 10%; height: 10px; background-color: grey;"></div> </div> <p style="margin-left: 20px;">69% 19% • 10%</p>
1	C	345	<div style="display: flex; align-items: center;"> <div style="width: 3%; height: 10px; background-color: red; margin-right: 5px;"></div> <div style="width: 66%; height: 10px; background-color: green; margin-right: 5px;"></div> <div style="width: 22%; height: 10px; background-color: yellow; margin-right: 5px;"></div> <div style="width: 10%; height: 10px; background-color: grey;"></div> </div> <p style="margin-left: 20px;">66% 22% • 10%</p>
1	D	345	<div style="display: flex; align-items: center;"> <div style="width: 6%; height: 10px; background-color: red; margin-right: 5px;"></div> <div style="width: 68%; height: 10px; background-color: green; margin-right: 5px;"></div> <div style="width: 20%; height: 10px; background-color: yellow; margin-right: 5px;"></div> <div style="width: 10%; height: 10px; background-color: grey;"></div> </div> <p style="margin-left: 20px;">68% 20% • 10%</p>

2 Entry composition

There are 4 unique types of molecules in this entry. The entry contains 10300 atoms, of which 0 are hydrogens and 0 are deuteriums.

In the tables below, the ZeroOcc column contains the number of atoms modelled with zero occupancy, the AltConf column contains the number of residues with at least one atom in alternate conformation and the Trace column contains the number of residues modelled with at most 2 atoms.

- Molecule 1 is a protein called Putative dihydroorotate dehydrogenase; dihydroorotate oxidase.

Mol	Chain	Residues	Atoms					ZeroOcc	AltConf	Trace
			Total	C	N	O	S			
1	A	310	2416	1548	397	458	13	0	1	0
1	B	310	2416	1548	397	458	13	0	1	0
1	C	310	2416	1548	397	458	13	0	1	0
1	D	309	2411	1545	396	457	13	0	1	0

There are 136 discrepancies between the modelled and reference sequences:

Chain	Residue	Modelled	Actual	Comment	Reference
A	-33	MET	-	EXPRESSION TAG	UNP Q8DVA1
A	-32	GLY	-	EXPRESSION TAG	UNP Q8DVA1
A	-31	SER	-	EXPRESSION TAG	UNP Q8DVA1
A	-30	SER	-	EXPRESSION TAG	UNP Q8DVA1
A	-29	HIS	-	EXPRESSION TAG	UNP Q8DVA1
A	-28	HIS	-	EXPRESSION TAG	UNP Q8DVA1
A	-27	HIS	-	EXPRESSION TAG	UNP Q8DVA1
A	-26	HIS	-	EXPRESSION TAG	UNP Q8DVA1
A	-25	HIS	-	EXPRESSION TAG	UNP Q8DVA1
A	-24	HIS	-	EXPRESSION TAG	UNP Q8DVA1
A	-23	SER	-	EXPRESSION TAG	UNP Q8DVA1
A	-22	SER	-	EXPRESSION TAG	UNP Q8DVA1
A	-21	GLY	-	EXPRESSION TAG	UNP Q8DVA1
A	-20	LEU	-	EXPRESSION TAG	UNP Q8DVA1
A	-19	VAL	-	EXPRESSION TAG	UNP Q8DVA1
A	-18	PRO	-	EXPRESSION TAG	UNP Q8DVA1
A	-17	ARG	-	EXPRESSION TAG	UNP Q8DVA1
A	-16	GLY	-	EXPRESSION TAG	UNP Q8DVA1
A	-15	SER	-	EXPRESSION TAG	UNP Q8DVA1
A	-14	HIS	-	EXPRESSION TAG	UNP Q8DVA1

Continued on next page...

Continued from previous page...

Chain	Residue	Modelled	Actual	Comment	Reference
A	-13	MET	-	EXPRESSION TAG	UNP Q8DVA1
A	-12	ALA	-	EXPRESSION TAG	UNP Q8DVA1
A	-11	SER	-	EXPRESSION TAG	UNP Q8DVA1
A	-10	MET	-	EXPRESSION TAG	UNP Q8DVA1
A	-9	THR	-	EXPRESSION TAG	UNP Q8DVA1
A	-8	GLY	-	EXPRESSION TAG	UNP Q8DVA1
A	-7	GLY	-	EXPRESSION TAG	UNP Q8DVA1
A	-6	GLN	-	EXPRESSION TAG	UNP Q8DVA1
A	-5	GLN	-	EXPRESSION TAG	UNP Q8DVA1
A	-4	MET	-	EXPRESSION TAG	UNP Q8DVA1
A	-3	GLY	-	EXPRESSION TAG	UNP Q8DVA1
A	-2	ARG	-	EXPRESSION TAG	UNP Q8DVA1
A	-1	GLY	-	EXPRESSION TAG	UNP Q8DVA1
A	0	SER	-	EXPRESSION TAG	UNP Q8DVA1
B	-33	MET	-	EXPRESSION TAG	UNP Q8DVA1
B	-32	GLY	-	EXPRESSION TAG	UNP Q8DVA1
B	-31	SER	-	EXPRESSION TAG	UNP Q8DVA1
B	-30	SER	-	EXPRESSION TAG	UNP Q8DVA1
B	-29	HIS	-	EXPRESSION TAG	UNP Q8DVA1
B	-28	HIS	-	EXPRESSION TAG	UNP Q8DVA1
B	-27	HIS	-	EXPRESSION TAG	UNP Q8DVA1
B	-26	HIS	-	EXPRESSION TAG	UNP Q8DVA1
B	-25	HIS	-	EXPRESSION TAG	UNP Q8DVA1
B	-24	HIS	-	EXPRESSION TAG	UNP Q8DVA1
B	-23	SER	-	EXPRESSION TAG	UNP Q8DVA1
B	-22	SER	-	EXPRESSION TAG	UNP Q8DVA1
B	-21	GLY	-	EXPRESSION TAG	UNP Q8DVA1
B	-20	LEU	-	EXPRESSION TAG	UNP Q8DVA1
B	-19	VAL	-	EXPRESSION TAG	UNP Q8DVA1
B	-18	PRO	-	EXPRESSION TAG	UNP Q8DVA1
B	-17	ARG	-	EXPRESSION TAG	UNP Q8DVA1
B	-16	GLY	-	EXPRESSION TAG	UNP Q8DVA1
B	-15	SER	-	EXPRESSION TAG	UNP Q8DVA1
B	-14	HIS	-	EXPRESSION TAG	UNP Q8DVA1
B	-13	MET	-	EXPRESSION TAG	UNP Q8DVA1
B	-12	ALA	-	EXPRESSION TAG	UNP Q8DVA1
B	-11	SER	-	EXPRESSION TAG	UNP Q8DVA1
B	-10	MET	-	EXPRESSION TAG	UNP Q8DVA1
B	-9	THR	-	EXPRESSION TAG	UNP Q8DVA1
B	-8	GLY	-	EXPRESSION TAG	UNP Q8DVA1
B	-7	GLY	-	EXPRESSION TAG	UNP Q8DVA1
B	-6	GLN	-	EXPRESSION TAG	UNP Q8DVA1

Continued on next page...

Continued from previous page...

Chain	Residue	Modelled	Actual	Comment	Reference
B	-5	GLN	-	EXPRESSION TAG	UNP Q8DVA1
B	-4	MET	-	EXPRESSION TAG	UNP Q8DVA1
B	-3	GLY	-	EXPRESSION TAG	UNP Q8DVA1
B	-2	ARG	-	EXPRESSION TAG	UNP Q8DVA1
B	-1	GLY	-	EXPRESSION TAG	UNP Q8DVA1
B	0	SER	-	EXPRESSION TAG	UNP Q8DVA1
C	-33	MET	-	EXPRESSION TAG	UNP Q8DVA1
C	-32	GLY	-	EXPRESSION TAG	UNP Q8DVA1
C	-31	SER	-	EXPRESSION TAG	UNP Q8DVA1
C	-30	SER	-	EXPRESSION TAG	UNP Q8DVA1
C	-29	HIS	-	EXPRESSION TAG	UNP Q8DVA1
C	-28	HIS	-	EXPRESSION TAG	UNP Q8DVA1
C	-27	HIS	-	EXPRESSION TAG	UNP Q8DVA1
C	-26	HIS	-	EXPRESSION TAG	UNP Q8DVA1
C	-25	HIS	-	EXPRESSION TAG	UNP Q8DVA1
C	-24	HIS	-	EXPRESSION TAG	UNP Q8DVA1
C	-23	SER	-	EXPRESSION TAG	UNP Q8DVA1
C	-22	SER	-	EXPRESSION TAG	UNP Q8DVA1
C	-21	GLY	-	EXPRESSION TAG	UNP Q8DVA1
C	-20	LEU	-	EXPRESSION TAG	UNP Q8DVA1
C	-19	VAL	-	EXPRESSION TAG	UNP Q8DVA1
C	-18	PRO	-	EXPRESSION TAG	UNP Q8DVA1
C	-17	ARG	-	EXPRESSION TAG	UNP Q8DVA1
C	-16	GLY	-	EXPRESSION TAG	UNP Q8DVA1
C	-15	SER	-	EXPRESSION TAG	UNP Q8DVA1
C	-14	HIS	-	EXPRESSION TAG	UNP Q8DVA1
C	-13	MET	-	EXPRESSION TAG	UNP Q8DVA1
C	-12	ALA	-	EXPRESSION TAG	UNP Q8DVA1
C	-11	SER	-	EXPRESSION TAG	UNP Q8DVA1
C	-10	MET	-	EXPRESSION TAG	UNP Q8DVA1
C	-9	THR	-	EXPRESSION TAG	UNP Q8DVA1
C	-8	GLY	-	EXPRESSION TAG	UNP Q8DVA1
C	-7	GLY	-	EXPRESSION TAG	UNP Q8DVA1
C	-6	GLN	-	EXPRESSION TAG	UNP Q8DVA1
C	-5	GLN	-	EXPRESSION TAG	UNP Q8DVA1
C	-4	MET	-	EXPRESSION TAG	UNP Q8DVA1
C	-3	GLY	-	EXPRESSION TAG	UNP Q8DVA1
C	-2	ARG	-	EXPRESSION TAG	UNP Q8DVA1
C	-1	GLY	-	EXPRESSION TAG	UNP Q8DVA1
C	0	SER	-	EXPRESSION TAG	UNP Q8DVA1
D	-33	MET	-	EXPRESSION TAG	UNP Q8DVA1
D	-32	GLY	-	EXPRESSION TAG	UNP Q8DVA1

Continued on next page...

Continued from previous page...

Chain	Residue	Modelled	Actual	Comment	Reference
D	-31	SER	-	EXPRESSION TAG	UNP Q8DVA1
D	-30	SER	-	EXPRESSION TAG	UNP Q8DVA1
D	-29	HIS	-	EXPRESSION TAG	UNP Q8DVA1
D	-28	HIS	-	EXPRESSION TAG	UNP Q8DVA1
D	-27	HIS	-	EXPRESSION TAG	UNP Q8DVA1
D	-26	HIS	-	EXPRESSION TAG	UNP Q8DVA1
D	-25	HIS	-	EXPRESSION TAG	UNP Q8DVA1
D	-24	HIS	-	EXPRESSION TAG	UNP Q8DVA1
D	-23	SER	-	EXPRESSION TAG	UNP Q8DVA1
D	-22	SER	-	EXPRESSION TAG	UNP Q8DVA1
D	-21	GLY	-	EXPRESSION TAG	UNP Q8DVA1
D	-20	LEU	-	EXPRESSION TAG	UNP Q8DVA1
D	-19	VAL	-	EXPRESSION TAG	UNP Q8DVA1
D	-18	PRO	-	EXPRESSION TAG	UNP Q8DVA1
D	-17	ARG	-	EXPRESSION TAG	UNP Q8DVA1
D	-16	GLY	-	EXPRESSION TAG	UNP Q8DVA1
D	-15	SER	-	EXPRESSION TAG	UNP Q8DVA1
D	-14	HIS	-	EXPRESSION TAG	UNP Q8DVA1
D	-13	MET	-	EXPRESSION TAG	UNP Q8DVA1
D	-12	ALA	-	EXPRESSION TAG	UNP Q8DVA1
D	-11	SER	-	EXPRESSION TAG	UNP Q8DVA1
D	-10	MET	-	EXPRESSION TAG	UNP Q8DVA1
D	-9	THR	-	EXPRESSION TAG	UNP Q8DVA1
D	-8	GLY	-	EXPRESSION TAG	UNP Q8DVA1
D	-7	GLY	-	EXPRESSION TAG	UNP Q8DVA1
D	-6	GLN	-	EXPRESSION TAG	UNP Q8DVA1
D	-5	GLN	-	EXPRESSION TAG	UNP Q8DVA1
D	-4	MET	-	EXPRESSION TAG	UNP Q8DVA1
D	-3	GLY	-	EXPRESSION TAG	UNP Q8DVA1
D	-2	ARG	-	EXPRESSION TAG	UNP Q8DVA1
D	-1	GLY	-	EXPRESSION TAG	UNP Q8DVA1
D	0	SER	-	EXPRESSION TAG	UNP Q8DVA1

- Molecule 2 is FLAVIN MONONUCLEOTIDE (three-letter code: FMN) (formula: C₁₇H₂₁N₄O₉P).

Mol	Chain	Residues	Atoms			ZeroOcc	AltConf
3	A	1	Total	C	O	0	0
			6	3	3		
3	B	1	Total	C	O	0	0
			6	3	3		
3	C	1	Total	C	O	0	0
			6	3	3		
3	D	1	Total	C	O	0	0
			6	3	3		

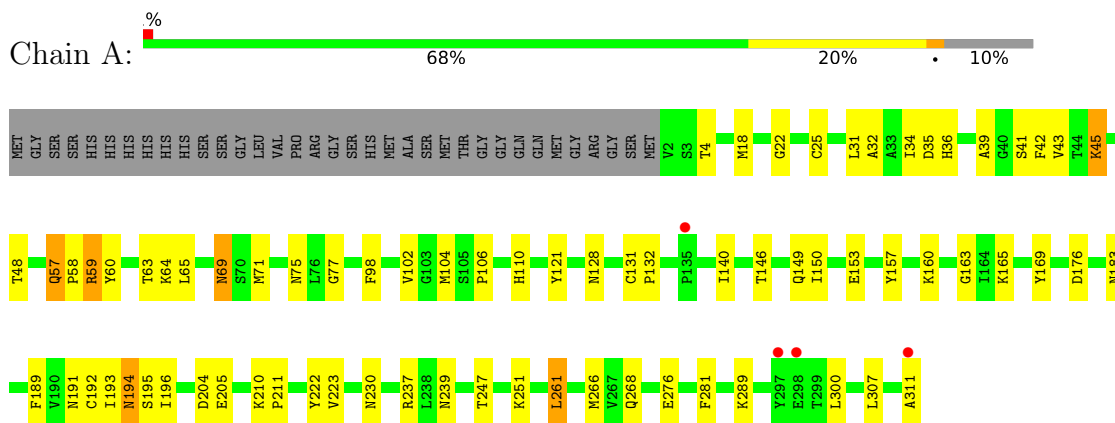
- Molecule 4 is water.

Mol	Chain	Residues	Atoms		ZeroOcc	AltConf
4	A	131	Total	O	0	0
			131	131		
4	B	81	Total	O	0	0
			81	81		
4	C	144	Total	O	0	0
			144	144		
4	D	137	Total	O	0	0
			137	137		

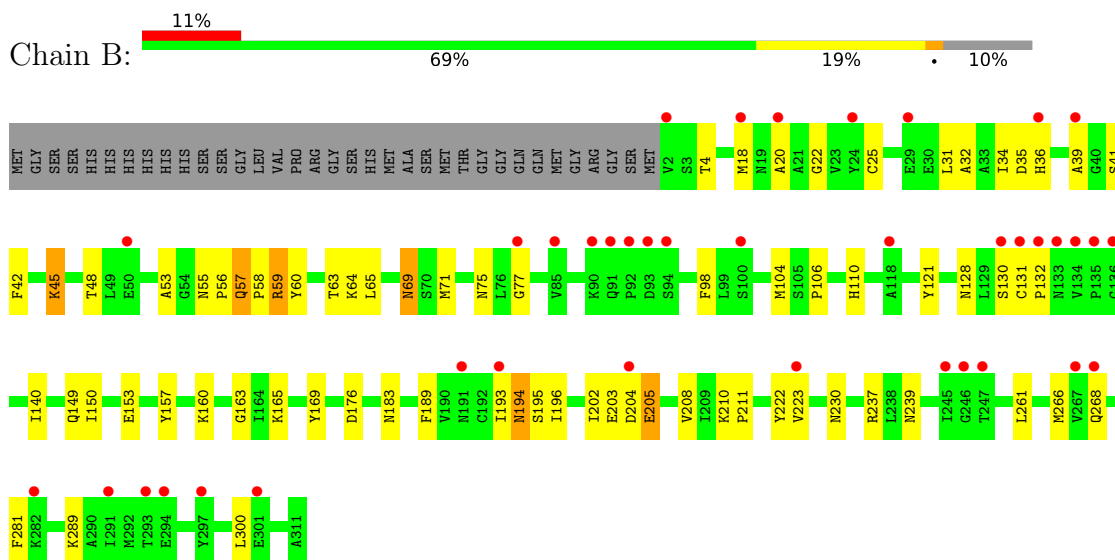
3 Residue-property plots

These plots are drawn for all protein, RNA, DNA and oligosaccharide chains in the entry. The first graphic for a chain summarises the proportions of the various outlier classes displayed in the second graphic. The second graphic shows the sequence view annotated by issues in geometry and electron density. Residues are color-coded according to the number of geometric quality criteria for which they contain at least one outlier: green = 0, yellow = 1, orange = 2 and red = 3 or more. A red dot above a residue indicates a poor fit to the electron density ($RSRZ > 2$). Stretches of 2 or more consecutive residues without any outlier are shown as a green connector. Residues present in the sample, but not in the model, are shown in grey.

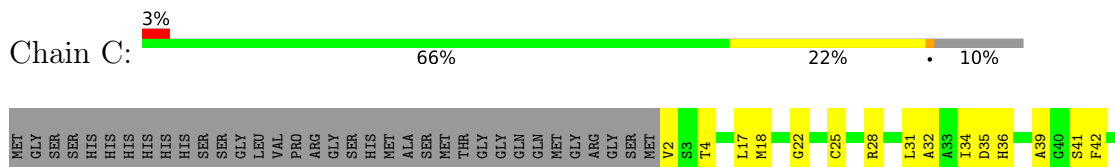
- Molecule 1: Putative dihydroorotate dehydrogenase; dihydroorotate oxidase

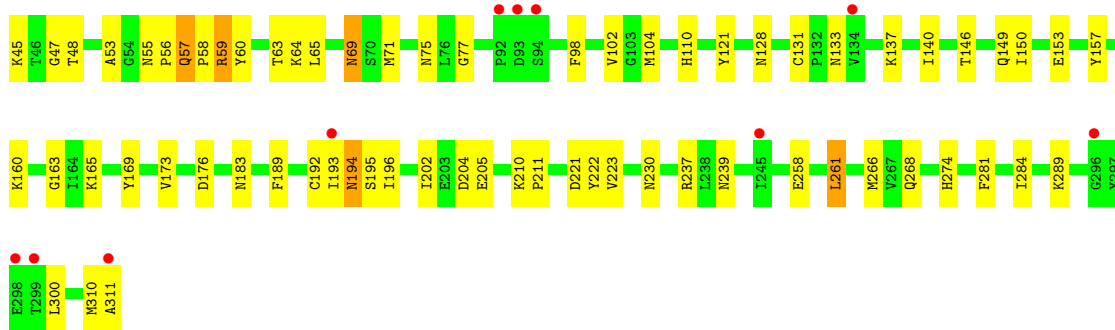


- Molecule 1: Putative dihydroorotate dehydrogenase; dihydroorotate oxidase

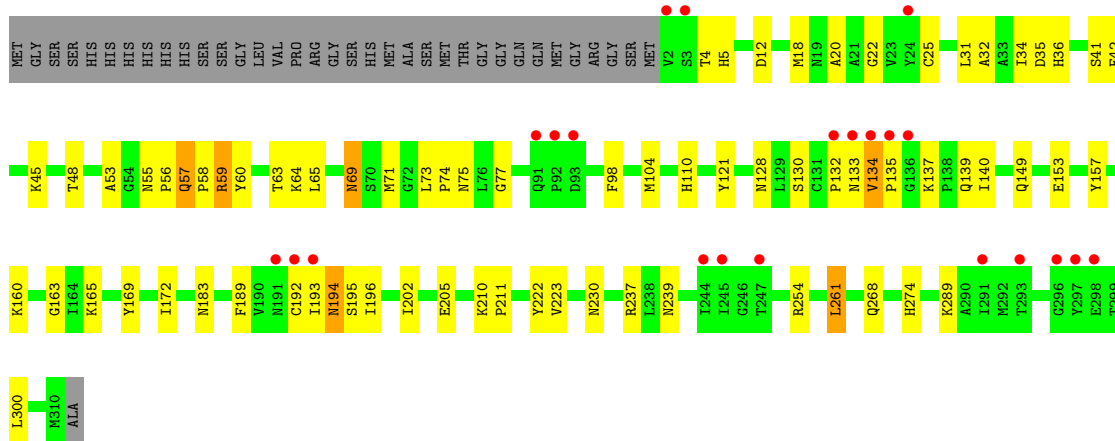


- Molecule 1: Putative dihydroorotate dehydrogenase; dihydroorotate oxidase





● Molecule 1: Putative dihydroorotate dehydrogenase; dihydroorotate oxidase



4 Data and refinement statistics

Property	Value	Source
Space group	C 2 2 21	Depositor
Cell constants a, b, c, α , β , γ	103.13Å 158.28Å 193.35Å 90.00° 90.00° 90.00°	Depositor
Resolution (Å)	33.10 – 2.40 33.10 – 2.40	Depositor EDS
% Data completeness (in resolution range)	90.9 (33.10-2.40) 97.7 (33.10-2.40)	Depositor EDS
R_{merge}	0.11	Depositor
R_{sym}	(Not available)	Depositor
$\langle I/\sigma(I) \rangle$ ¹	4.10 (at 2.39Å)	Xtrriage
Refinement program	PHENIX (phenix.refine: 1.6.4_486)	Depositor
R, R_{free}	0.202 , 0.248 0.201 , 0.244	Depositor DCC
R_{free} test set	3075 reflections (5.06%)	wwPDB-VP
Wilson B-factor (Å ²)	30.3	Xtrriage
Anisotropy	0.390	Xtrriage
Bulk solvent k_{sol} (e/Å ³), B_{sol} (Å ²)	0.33 , 37.8	EDS
L-test for twinning ²	$\langle L \rangle = 0.51$, $\langle L^2 \rangle = 0.34$	Xtrriage
Estimated twinning fraction	No twinning to report.	Xtrriage
F_o, F_c correlation	0.94	EDS
Total number of atoms	10300	wwPDB-VP
Average B, all atoms (Å ²)	33.0	wwPDB-VP

Xtrriage's analysis on translational NCS is as follows: *The largest off-origin peak in the Patterson function is 4.03% of the height of the origin peak. No significant pseudotranslation is detected.*

¹Intensities estimated from amplitudes.

²Theoretical values of $\langle |L| \rangle$, $\langle L^2 \rangle$ for acentric reflections are 0.5, 0.333 respectively for untwinned datasets, and 0.375, 0.2 for perfectly twinned datasets.

5 Model quality [i](#)

5.1 Standard geometry [i](#)

Bond lengths and bond angles in the following residue types are not validated in this section: MLY, GOL, FMN

The Z score for a bond length (or angle) is the number of standard deviations the observed value is removed from the expected value. A bond length (or angle) with $|Z| > 5$ is considered an outlier worth inspection. RMSZ is the root-mean-square of all Z scores of the bond lengths (or angles).

Mol	Chain	Bond lengths		Bond angles	
		RMSZ	# Z >5	RMSZ	# Z >5
1	A	0.41	0/2395	0.54	0/3254
1	B	0.38	0/2395	0.54	1/3254 (0.0%)
1	C	0.41	0/2395	0.55	0/3254
1	D	0.40	0/2390	0.53	0/3247
All	All	0.40	0/9575	0.54	1/13009 (0.0%)

There are no bond length outliers.

All (1) bond angle outliers are listed below:

Mol	Chain	Res	Type	Atoms	Z	Observed(°)	Ideal(°)
1	B	130	SER	N-CA-C	-5.05	97.36	111.00

There are no chirality outliers.

There are no planarity outliers.

5.2 Too-close contacts [i](#)

In the following table, the Non-H and H(model) columns list the number of non-hydrogen atoms and hydrogen atoms in the chain respectively. The H(added) column lists the number of hydrogen atoms added and optimized by MolProbity. The Clashes column lists the number of clashes within the asymmetric unit, whereas Symm-Clashes lists symmetry-related clashes.

Mol	Chain	Non-H	H(model)	H(added)	Clashes	Symm-Clashes
1	A	2416	0	2401	77	0
1	B	2416	0	2401	71	0
1	C	2416	0	2401	79	0
1	D	2411	0	2396	83	0
2	A	31	0	19	4	0
2	B	31	0	19	7	0

Continued on next page...

Continued from previous page...

Mol	Chain	Non-H	H(model)	H(added)	Clashes	Symm-Clashes
2	C	31	0	19	4	0
2	D	31	0	19	6	0
3	A	6	0	8	0	0
3	B	6	0	8	0	0
3	C	6	0	8	0	0
3	D	6	0	8	0	0
4	A	131	0	0	6	0
4	B	81	0	0	1	0
4	C	144	0	0	5	0
4	D	137	0	0	6	0
All	All	10300	0	9707	304	0

The all-atom clashscore is defined as the number of clashes found per 1000 atoms (including hydrogen atoms). The all-atom clashscore for this structure is 16.

All (304) close contacts within the same asymmetric unit are listed below, sorted by their clash magnitude.

Atom-1	Atom-2	Interatomic distance (Å)	Clash overlap (Å)
1:D:135:PRO:HD3	4:D:381:HOH:O	1.33	1.29
1:C:63:THR:HG22	1:C:65:LEU:H	1.17	1.10
1:D:133:ASN:OD1	1:D:134:VAL:HG22	1.53	1.05
1:B:63:THR:HG22	1:B:65:LEU:H	1.21	1.04
1:A:63:THR:HG22	1:A:65:LEU:H	1.20	1.03
1:D:63:THR:HG22	1:D:65:LEU:H	1.20	1.03
1:D:194:ASN:HD22	1:D:195:SER:H	1.03	1.01
1:A:194:ASN:HD22	1:A:195:SER:H	1.04	0.99
1:B:194:ASN:HD22	1:B:195:SER:H	1.02	0.98
1:D:169:TYR:H	1:D:230:ASN:HD21	1.08	0.98
1:C:194:ASN:HD22	1:C:195:SER:H	1.03	0.96
1:A:169:TYR:H	1:A:230:ASN:HD21	1.14	0.95
1:A:63:THR:HG21	1:A:222:TYR:OH	1.68	0.94
1:D:63:THR:HG21	1:D:222:TYR:OH	1.65	0.94
1:B:169:TYR:H	1:B:230:ASN:HD21	1.15	0.93
1:B:63:THR:HG21	1:B:222:TYR:OH	1.69	0.92
1:C:63:THR:HG21	1:C:222:TYR:OH	1.70	0.91
1:C:169:TYR:H	1:C:230:ASN:HD21	1.13	0.90
1:D:183:ASN:HD21	1:D:239:ASN:H	1.20	0.86
1:A:183:ASN:HD21	1:A:239:ASN:H	1.24	0.85
1:B:183:ASN:HD21	1:B:239:ASN:H	1.22	0.84
1:C:183:ASN:HD21	1:C:239:ASN:H	1.26	0.83
1:D:69:ASN:HB2	1:D:71:MET:HE2	1.63	0.81

Continued on next page...

Continued from previous page...

Atom-1	Atom-2	Interatomic distance (Å)	Clash overlap (Å)
1:D:133:ASN:CG	1:D:134:VAL:HG22	2.01	0.80
1:C:274:HIS:HD2	4:C:318:HOH:O	1.65	0.78
1:B:69:ASN:HB2	1:B:71:MET:HE2	1.65	0.77
1:A:69:ASN:HB2	1:A:71:MET:HE2	1.67	0.76
1:B:194:ASN:HD22	1:B:195:SER:N	1.82	0.75
1:C:194:ASN:HD22	1:C:195:SER:N	1.83	0.75
1:B:60:TYR:HB2	1:B:71:MET:HE1	1.69	0.75
1:B:196:ILE:HG13	1:B:223:VAL:HG22	1.69	0.75
1:A:60:TYR:HB2	1:A:71:MET:CE	2.18	0.74
1:D:194:ASN:HD22	1:D:195:SER:N	1.83	0.74
1:A:194:ASN:HD22	1:A:195:SER:N	1.86	0.72
1:D:60:TYR:HB2	1:D:71:MET:CE	2.19	0.72
1:C:69:ASN:HB2	1:C:71:MET:HE2	1.71	0.72
1:D:48:THR:HG21	1:D:104:MET:HE3	1.71	0.71
1:B:60:TYR:HB2	1:B:71:MET:CE	2.20	0.71
1:C:60:TYR:HB2	1:C:71:MET:CE	2.20	0.71
1:D:183:ASN:ND2	1:D:239:ASN:H	1.89	0.71
1:B:121:TYR:O	1:B:160:LYS:HE3	1.90	0.71
1:C:261:LEU:HD11	1:D:205:GLU:HA	1.72	0.70
1:A:131:CYS:SG	1:A:140:ILE:HD12	2.32	0.70
1:A:183:ASN:ND2	1:A:239:ASN:H	1.89	0.69
1:B:183:ASN:ND2	1:B:239:ASN:H	1.90	0.69
1:C:60:TYR:HB2	1:C:71:MET:HE1	1.75	0.69
1:A:60:TYR:HB2	1:A:71:MET:HE1	1.75	0.69
1:C:183:ASN:ND2	1:C:239:ASN:H	1.89	0.69
1:A:196:ILE:HG13	1:A:223:VAL:HG22	1.75	0.69
1:D:121:TYR:O	1:D:160:LYS:HE3	1.93	0.69
1:B:48:THR:HG21	1:B:104:MET:HE3	1.74	0.69
1:A:261:LEU:HD11	1:B:205:GLU:HB3	1.73	0.68
1:A:131:CYS:HB2	1:A:132:PRO:HD2	1.76	0.68
1:A:121:TYR:O	1:A:160:LYS:HE3	1.93	0.68
1:C:121:TYR:O	1:C:160:LYS:HE3	1.93	0.67
1:D:110:HIS:HD2	1:D:157:TYR:OH	1.78	0.66
1:A:4:THR:H	1:A:289:MLY:HH22	1.60	0.66
1:C:4:THR:H	1:C:289:MLY:HH22	1.61	0.65
1:D:274:HIS:HD2	4:D:507:HOH:O	1.77	0.65
1:C:22:GLY:HA3	2:C:400:FMN:N5	2.12	0.65
1:C:196:ILE:HG13	1:C:223:VAL:HG22	1.78	0.64
1:D:4:THR:H	1:D:289:MLY:HH22	1.61	0.64
1:C:48:THR:HG21	1:C:104:MET:HE3	1.79	0.64
1:A:48:THR:HG21	1:A:104:MET:HE3	1.79	0.63

Continued on next page...

Continued from previous page...

Atom-1	Atom-2	Interatomic distance (Å)	Clash overlap (Å)
1:D:196:ILE:HG13	1:D:223:VAL:HG22	1.80	0.63
1:A:110:HIS:HD2	1:A:157:TYR:OH	1.82	0.62
1:A:311:ALA:O	1:B:210:MLY:HH23	1.99	0.62
1:B:4:THR:H	1:B:289:MLY:HH22	1.63	0.62
1:D:60:TYR:HB2	1:D:71:MET:HE1	1.79	0.62
1:B:110:HIS:HD2	1:B:157:TYR:OH	1.83	0.62
2:B:400:FMN:C2'	2:B:400:FMN:H9	2.30	0.61
1:D:48:THR:HG21	1:D:104:MET:CE	2.29	0.61
1:A:22:GLY:HA3	2:A:400:FMN:N5	2.16	0.61
1:C:110:HIS:HD2	1:C:157:TYR:OH	1.82	0.60
1:C:205:GLU:HB3	1:D:261:LEU:HD11	1.83	0.59
1:B:22:GLY:HA3	2:B:400:FMN:N5	2.17	0.59
1:B:48:THR:HG21	1:B:104:MET:CE	2.32	0.59
1:D:22:GLY:HA3	2:D:400:FMN:N5	2.17	0.59
1:A:261:LEU:HD11	1:B:205:GLU:HA	1.84	0.59
1:C:258:GLU:HB3	1:D:202:ILE:HD12	1.84	0.58
1:C:75:ASN:ND2	1:C:77:GLY:H	2.01	0.58
1:D:75:ASN:ND2	1:D:77:GLY:H	2.01	0.58
1:A:18:MET:CE	1:A:41:SER:HB3	2.34	0.57
1:B:75:ASN:ND2	1:B:77:GLY:H	2.03	0.57
1:A:194:ASN:ND2	1:A:195:SER:H	1.88	0.56
1:D:18:MET:CE	1:D:41:SER:HB3	2.34	0.56
1:A:48:THR:HG21	1:A:104:MET:CE	2.35	0.56
1:C:2:VAL:HG12	1:C:289:MLY:HG3	1.86	0.56
1:D:133:ASN:CG	1:D:134:VAL:N	2.58	0.56
1:A:75:ASN:ND2	1:A:77:GLY:H	2.03	0.56
1:B:194:ASN:ND2	1:B:195:SER:H	1.87	0.56
1:C:34:ILE:HG21	1:C:42:PHE:HB3	1.88	0.56
1:C:28:ARG:NH1	4:C:402:HOH:O	2.39	0.55
1:C:63:THR:HG22	1:C:65:LEU:N	2.02	0.55
1:D:133:ASN:ND2	1:D:134:VAL:HG22	2.21	0.55
1:D:60:TYR:HB2	1:D:71:MET:HE3	1.89	0.55
1:C:48:THR:HG21	1:C:104:MET:CE	2.36	0.54
1:C:131:CYS:SG	1:C:140:ILE:HD12	2.46	0.54
1:B:22:GLY:O	1:B:45:MLY:HH12	2.07	0.54
1:A:102:VAL:HG21	1:A:131:CYS:HB3	1.89	0.54
1:B:34:ILE:HG21	1:B:42:PHE:HB3	1.90	0.54
1:B:183:ASN:HD21	1:B:239:ASN:N	2.01	0.54
2:B:400:FMN:C9	2:B:400:FMN:H2'	2.37	0.54
1:C:75:ASN:HD22	1:C:77:GLY:H	1.57	0.53
1:B:20:ALA:HB1	2:B:400:FMN:O2'	2.08	0.53

Continued on next page...

Continued from previous page...

Atom-1	Atom-2	Interatomic distance (Å)	Clash overlap (Å)
1:C:18:MET:HE3	1:C:266:MET:HG2	1.91	0.53
1:D:194:ASN:ND2	1:D:195:SER:H	1.88	0.53
1:A:163:GLY:HA3	1:A:189:PHE:CE1	2.44	0.52
1:C:194:ASN:ND2	1:C:195:SER:H	1.88	0.52
1:B:163:GLY:HA3	1:B:189:PHE:CE1	2.44	0.52
1:A:57:GLN:HE21	1:A:58:PRO:HA	1.74	0.52
1:A:32:ALA:O	1:A:36:HIS:HD2	1.93	0.52
1:B:18:MET:CE	1:B:41:SER:HB3	2.40	0.52
2:B:400:FMN:H9	2:B:400:FMN:H2'	1.90	0.51
1:D:34:ILE:HG21	1:D:42:PHE:HB3	1.92	0.51
1:D:163:GLY:HA3	1:D:189:PHE:CE1	2.45	0.51
1:D:239:ASN:ND2	4:D:336:HOH:O	2.43	0.51
1:A:261:LEU:HD11	1:B:205:GLU:CB	2.40	0.51
1:D:18:MET:HE1	1:D:41:SER:HB3	1.91	0.51
1:A:276:GLU:HG3	4:A:488:HOH:O	2.11	0.51
1:C:202:ILE:HG22	1:C:204:ASP:O	2.10	0.51
1:C:63:THR:CG2	1:C:64:LYS:N	2.74	0.51
2:B:400:FMN:C2'	2:B:400:FMN:C9	2.89	0.51
1:A:149:GLN:O	1:A:153:GLU:HG3	2.11	0.50
1:A:289:MLY:HH21	4:A:406:HOH:O	2.10	0.50
1:C:18:MET:CE	1:C:41:SER:HB3	2.40	0.50
1:C:48:THR:H	1:C:75:ASN:HD21	1.59	0.50
1:A:63:THR:CG2	1:A:64:LYS:N	2.74	0.50
1:D:172:ILE:HG12	4:D:367:HOH:O	2.11	0.50
1:A:34:ILE:HG21	1:A:42:PHE:HB3	1.93	0.50
1:B:203:GLU:HB2	1:B:208:VAL:HG12	1.92	0.50
1:C:163:GLY:HA3	1:C:189:PHE:CE1	2.47	0.50
1:B:69:ASN:ND2	1:B:71:MET:HG2	2.26	0.50
1:C:22:GLY:O	1:C:45:MLY:HH12	2.11	0.50
1:A:183:ASN:HD21	1:A:239:ASN:N	2.02	0.50
1:A:18:MET:HE1	1:A:41:SER:HB3	1.94	0.50
1:A:60:TYR:HB2	1:A:71:MET:HE3	1.91	0.50
1:B:18:MET:HG3	1:B:268:GLN:HG2	1.94	0.50
1:C:59:ARG:HD3	1:C:71:MET:SD	2.52	0.50
1:D:183:ASN:HD21	1:D:239:ASN:N	1.99	0.50
1:D:25:CYS:HB2	1:D:31:LEU:HD21	1.93	0.49
1:A:191:ASN:HD21	1:A:268:GLN:NE2	2.10	0.49
1:B:25:CYS:HB2	1:B:31:LEU:HD21	1.94	0.49
1:C:55:ASN:HB3	1:C:56:PRO:HD2	1.95	0.49
1:D:22:GLY:O	1:D:45:MLY:HH12	2.12	0.49
1:D:63:THR:HG22	1:D:65:LEU:N	2.06	0.49

Continued on next page...

Continued from previous page...

Atom-1	Atom-2	Interatomic distance (Å)	Clash overlap (Å)
2:C:400:FMN:H9	2:C:400:FMN:C2'	2.42	0.49
1:B:18:MET:HE1	1:B:41:SER:HB3	1.95	0.49
1:D:237:ARG:HG2	4:D:366:HOH:O	2.12	0.49
1:D:133:ASN:HD22	1:D:140:ILE:CG1	2.25	0.48
1:B:131:CYS:SG	1:B:140:ILE:HD12	2.53	0.48
1:A:63:THR:HG22	1:A:64:LYS:N	2.28	0.48
1:D:75:ASN:HD22	1:D:77:GLY:H	1.61	0.48
2:D:400:FMN:H9	2:D:400:FMN:C3'	2.42	0.48
1:A:193:ILE:HD11	1:A:223:VAL:HG13	1.95	0.48
1:B:63:THR:CG2	1:B:64:LYS:N	2.75	0.48
1:A:237:ARG:HG2	4:A:377:HOH:O	2.14	0.48
1:C:18:MET:HE1	1:C:98:PHE:CE1	2.49	0.48
1:C:176:ASP:OD1	1:C:237:ARG:NH1	2.44	0.48
1:D:55:ASN:HB3	1:D:56:PRO:HD2	1.96	0.48
1:B:48:THR:H	1:B:75:ASN:HD21	1.61	0.48
1:A:22:GLY:O	1:A:45:MLY:HH12	2.14	0.48
1:A:261:LEU:CD1	1:B:205:GLU:HA	2.43	0.48
1:B:193:ILE:HD11	1:B:223:VAL:HG13	1.95	0.48
1:D:57:GLN:HE21	1:D:58:PRO:HA	1.79	0.48
1:A:18:MET:HE1	1:A:98:PHE:CE1	2.49	0.47
1:B:57:GLN:HE21	1:B:58:PRO:HA	1.79	0.47
1:B:59:ARG:HD3	1:B:71:MET:SD	2.54	0.47
1:B:202:ILE:HG22	1:B:204:ASP:O	2.13	0.47
1:D:59:ARG:HD3	1:D:71:MET:SD	2.54	0.47
1:C:205:GLU:CB	1:D:261:LEU:HD11	2.43	0.47
1:D:169:TYR:N	1:D:230:ASN:HD21	1.93	0.47
1:A:48:THR:H	1:A:75:ASN:HD21	1.62	0.47
1:B:18:MET:HE1	1:B:98:PHE:CE1	2.50	0.47
1:D:133:ASN:OD1	1:D:134:VAL:CG2	2.44	0.47
1:A:261:LEU:HD11	1:B:205:GLU:CA	2.45	0.47
1:D:193:ILE:HD11	1:D:223:VAL:HG13	1.96	0.47
1:A:48:THR:H	1:A:75:ASN:ND2	2.12	0.47
1:A:110:HIS:HE1	1:A:153:GLU:OE2	1.98	0.47
1:B:196:ILE:CG1	1:B:223:VAL:HG22	2.41	0.47
1:B:237:ARG:HG2	4:B:368:HOH:O	2.13	0.47
1:B:75:ASN:HD22	1:B:77:GLY:H	1.62	0.47
1:D:18:MET:HG3	1:D:268:GLN:HG2	1.97	0.47
1:A:59:ARG:HD3	1:A:71:MET:SD	2.55	0.46
1:B:131:CYS:HB2	1:B:132:PRO:HD2	1.97	0.46
2:D:400:FMN:H9	2:D:400:FMN:O3'	2.14	0.46
2:A:400:FMN:O4	4:A:341:HOH:O	2.20	0.46

Continued on next page...

Continued from previous page...

Atom-1	Atom-2	Interatomic distance (Å)	Clash overlap (Å)
1:B:32:ALA:O	1:B:36:HIS:HD2	1.98	0.46
1:C:60:TYR:HB2	1:C:71:MET:HE3	1.95	0.46
1:C:63:THR:HG22	1:C:64:LYS:N	2.30	0.46
1:C:149:GLN:O	1:C:153:GLU:HG3	2.15	0.46
1:C:237:ARG:HG2	4:C:371:HOH:O	2.15	0.46
1:A:163:GLY:HA3	1:A:189:PHE:CZ	2.50	0.46
1:C:192:CYS:HA	1:C:193:ILE:HA	1.71	0.46
1:D:63:THR:CG2	1:D:64:LYS:N	2.78	0.46
1:B:110:HIS:HE1	1:B:153:GLU:OE2	1.98	0.46
1:C:193:ILE:HD11	1:C:223:VAL:HG13	1.97	0.46
1:C:237:ARG:NH2	4:C:364:HOH:O	2.47	0.46
1:A:18:MET:HE3	1:A:266:MET:HG2	1.97	0.46
1:B:53:ALA:O	1:B:59:ARG:NH2	2.45	0.46
1:C:32:ALA:O	1:C:36:HIS:HD2	1.98	0.46
1:C:57:GLN:HE21	1:C:58:PRO:HA	1.81	0.46
1:A:131:CYS:HG	1:A:140:ILE:HD12	1.80	0.46
1:B:149:GLN:O	1:B:153:GLU:HG3	2.16	0.46
1:B:63:THR:HG22	1:B:64:LYS:N	2.30	0.46
1:A:18:MET:HG3	1:A:268:GLN:HG2	1.97	0.45
1:D:132:PRO:HA	1:D:139:GLN:HA	1.98	0.45
1:D:22:GLY:O	1:D:45:MLY:HH23	2.15	0.45
1:C:69:ASN:ND2	1:C:71:MET:HG2	2.31	0.45
1:A:102:VAL:HG21	1:A:131:CYS:CB	2.47	0.45
1:B:48:THR:H	1:B:75:ASN:ND2	2.14	0.45
2:C:400:FMN:C2'	2:C:400:FMN:C9	2.93	0.45
2:D:400:FMN:H9	2:D:400:FMN:C2'	2.47	0.45
1:B:18:MET:HE3	1:B:266:MET:HG2	1.99	0.45
1:B:69:ASN:HD22	1:B:71:MET:HG2	1.80	0.45
1:D:110:HIS:HE1	1:D:153:GLU:OE2	1.99	0.45
1:B:203:GLU:HB2	1:B:208:VAL:CG1	2.47	0.45
1:D:48:THR:H	1:D:75:ASN:ND2	2.15	0.45
1:A:176:ASP:OD1	1:A:237:ARG:NH1	2.44	0.44
1:C:183:ASN:HD21	1:C:239:ASN:N	2.04	0.44
1:D:48:THR:H	1:D:75:ASN:HD21	1.64	0.44
1:C:110:HIS:HE1	1:C:153:GLU:OE2	1.99	0.44
1:A:128:ASN:HA	1:A:165:LYS:HB3	2.00	0.44
1:D:196:ILE:CG1	1:D:223:VAL:HG22	2.45	0.44
1:C:17:LEU:HD11	1:C:284:ILE:HG22	2.00	0.44
1:A:251:MLY:HE3	4:A:354:HOH:O	2.18	0.44
1:B:22:GLY:O	1:B:45:MLY:HH23	2.18	0.44
1:D:18:MET:HE1	1:D:98:PHE:CE1	2.52	0.44

Continued on next page...

Continued from previous page...

Atom-1	Atom-2	Interatomic distance (Å)	Clash overlap (Å)
1:D:128:ASN:HA	1:D:165:LYS:HB3	1.99	0.44
2:B:400:FMN:H9	2:B:400:FMN:C3'	2.48	0.44
1:D:192:CYS:HA	1:D:193:ILE:HA	1.68	0.44
1:C:53:ALA:O	1:C:59:ARG:NH2	2.47	0.43
1:D:163:GLY:HA3	1:D:189:PHE:CZ	2.53	0.43
1:A:247:THR:CG2	2:A:400:FMN:H4'	2.49	0.43
1:C:196:ILE:CG1	1:C:223:VAL:HG22	2.47	0.43
1:C:310:MET:O	1:D:210:MLY:HE2	2.17	0.43
1:D:53:ALA:O	1:D:59:ARG:NH2	2.47	0.43
1:A:251:MLY:HH13	4:A:454:HOH:O	2.18	0.43
1:D:254:ARG:HD2	4:D:328:HOH:O	2.18	0.43
1:A:196:ILE:CG1	1:A:223:VAL:HG22	2.44	0.43
1:C:133:ASN:ND2	1:C:137:MLY:HB2	2.33	0.43
1:C:311:ALA:C	1:D:210:MLY:HH23	2.38	0.43
1:D:196:ILE:CD1	1:D:223:VAL:HG22	2.49	0.43
1:D:210:MLY:N	1:D:211:PRO:CD	2.81	0.43
1:C:18:MET:HG3	1:C:268:GLN:HG2	1.99	0.43
1:C:163:GLY:HA3	1:C:189:PHE:CZ	2.53	0.43
1:A:25:CYS:HB2	1:A:31:LEU:HD21	2.00	0.43
1:B:176:ASP:OD1	1:B:237:ARG:NH1	2.45	0.43
1:D:42:PHE:CD1	1:D:42:PHE:C	2.91	0.43
1:C:2:VAL:CG1	1:C:289:MLY:HG3	2.49	0.43
1:D:69:ASN:ND2	1:D:71:MET:HG2	2.33	0.43
1:B:169:TYR:N	1:B:230:ASN:HD21	1.98	0.43
1:C:39:ALA:HB2	1:C:281:PHE:CD2	2.54	0.43
1:C:173:VAL:HG21	1:D:137:MLY:C	2.49	0.43
1:A:43:VAL:HB	1:A:98:PHE:HB2	2.01	0.42
1:A:75:ASN:HD22	1:A:77:GLY:H	1.67	0.42
1:A:210:MLY:N	1:A:211:PRO:CD	2.83	0.42
1:B:39:ALA:HB2	1:B:281:PHE:CD2	2.54	0.42
1:A:63:THR:HG22	1:A:65:LEU:N	2.05	0.42
1:B:163:GLY:HA3	1:B:189:PHE:CZ	2.54	0.42
2:C:400:FMN:H9	2:C:400:FMN:C3'	2.50	0.42
1:A:106:PRO:HB3	1:A:150:ILE:HD11	2.00	0.42
1:C:210:MLY:N	1:C:211:PRO:CD	2.83	0.42
1:A:39:ALA:HB2	1:A:281:PHE:CD2	2.54	0.42
1:B:55:ASN:HB3	1:B:56:PRO:HD2	2.01	0.42
1:C:25:CYS:HB2	1:C:31:LEU:HD21	2.01	0.42
1:C:261:LEU:CD1	1:D:205:GLU:HA	2.45	0.42
1:D:63:THR:HG22	1:D:64:LYS:N	2.34	0.42
1:D:133:ASN:OD1	1:D:134:VAL:N	2.53	0.42

Continued on next page...

Continued from previous page...

Atom-1	Atom-2	Interatomic distance (Å)	Clash overlap (Å)
1:A:71:MET:HE3	2:A:400:FMN:HM72	2.02	0.42
1:C:205:GLU:HA	1:D:261:LEU:HD11	2.00	0.42
1:A:307:LEU:HD12	1:B:205:GLU:O	2.20	0.42
1:D:73:LEU:N	1:D:74:PRO:CD	2.83	0.42
1:C:128:ASN:HA	1:C:165:LYS:HB3	2.02	0.42
1:B:34:ILE:CG2	1:B:42:PHE:HB3	2.50	0.42
1:C:57:GLN:NE2	4:C:407:HOH:O	2.52	0.42
1:C:48:THR:H	1:C:75:ASN:ND2	2.16	0.41
1:A:60:TYR:CD1	1:A:60:TYR:C	2.94	0.41
1:A:192:CYS:HA	1:A:193:ILE:HA	1.70	0.41
1:B:210:MLY:N	1:B:211:PRO:CD	2.84	0.41
1:C:261:LEU:HD11	1:D:205:GLU:CA	2.47	0.41
1:C:102:VAL:HG21	1:C:131:CYS:HB3	2.02	0.41
1:D:5[A]:HIS:CE1	1:D:12:ASP:HB3	2.56	0.41
1:D:22:GLY:HA3	2:D:400:FMN:C4A	2.49	0.41
1:D:32:ALA:O	1:D:36:HIS:HD2	2.03	0.41
1:C:47:GLY:HA2	1:C:75:ASN:ND2	2.36	0.41
1:C:146:THR:O	1:C:150:ILE:HG12	2.20	0.41
1:B:106:PRO:HB3	1:B:150:ILE:HD11	2.03	0.41
1:A:32:ALA:O	1:A:36:HIS:CD2	2.74	0.41
1:A:204:ASP:HB3	1:A:205:GLU:H	1.66	0.41
1:B:128:ASN:HA	1:B:165:LYS:HB3	2.02	0.41
1:C:22:GLY:O	1:C:45:MLY:HH23	2.21	0.41
1:B:131:CYS:HB2	1:B:132:PRO:CD	2.51	0.41
1:C:18:MET:HE1	1:C:41:SER:HB3	2.03	0.41
1:A:18:MET:HE2	1:A:41:SER:HB3	2.03	0.40
1:B:42:PHE:C	1:B:42:PHE:CD1	2.94	0.40
1:B:204:ASP:HB3	1:B:205:GLU:H	1.66	0.40
1:C:210:MLY:HH22	1:C:210:MLY:HD2	1.79	0.40
1:C:221:ASP:HB3	1:D:65:LEU:CD1	2.52	0.40
1:D:20:ALA:HB1	2:D:400:FMN:O2'	2.21	0.40
1:D:133:ASN:CG	1:D:134:VAL:H	2.24	0.40
1:A:42:PHE:CD1	1:A:42:PHE:C	2.95	0.40
1:A:146:THR:O	1:A:150:ILE:HG12	2.22	0.40
1:D:149:GLN:O	1:D:153:GLU:HG3	2.21	0.40

There are no symmetry-related clashes.

5.3 Torsion angles [i](#)

5.3.1 Protein backbone [i](#)

In the following table, the Percentiles column shows the percent Ramachandran outliers of the chain as a percentile score with respect to all X-ray entries followed by that with respect to entries of similar resolution.

The Analysed column shows the number of residues for which the backbone conformation was analysed, and the total number of residues.

Mol	Chain	Analysed	Favoured	Allowed	Outliers	Percentiles	
1	A	302/345 (88%)	294 (97%)	8 (3%)	0	100	100
1	B	302/345 (88%)	292 (97%)	10 (3%)	0	100	100
1	C	302/345 (88%)	292 (97%)	10 (3%)	0	100	100
1	D	301/345 (87%)	292 (97%)	9 (3%)	0	100	100
All	All	1207/1380 (88%)	1170 (97%)	37 (3%)	0	100	100

There are no Ramachandran outliers to report.

5.3.2 Protein sidechains [i](#)

In the following table, the Percentiles column shows the percent sidechain outliers of the chain as a percentile score with respect to all X-ray entries followed by that with respect to entries of similar resolution.

The Analysed column shows the number of residues for which the sidechain conformation was analysed, and the total number of residues.

Mol	Chain	Analysed	Rotameric	Outliers	Percentiles	
1	A	255/281 (91%)	248 (97%)	7 (3%)	44	65
1	B	255/281 (91%)	247 (97%)	8 (3%)	40	60
1	C	255/281 (91%)	248 (97%)	7 (3%)	44	65
1	D	255/281 (91%)	246 (96%)	9 (4%)	36	55
All	All	1020/1124 (91%)	989 (97%)	31 (3%)	40	61

All (31) residues with a non-rotameric sidechain are listed below:

Mol	Chain	Res	Type
1	A	35	ASP
1	A	57	GLN

Continued on next page...

Continued from previous page...

Mol	Chain	Res	Type
1	A	59	ARG
1	A	69	ASN
1	A	194	ASN
1	A	261	LEU
1	A	300	LEU
1	B	35	ASP
1	B	57	GLN
1	B	59	ARG
1	B	69	ASN
1	B	194	ASN
1	B	205	GLU
1	B	261	LEU
1	B	300	LEU
1	C	35	ASP
1	C	57	GLN
1	C	59	ARG
1	C	69	ASN
1	C	194	ASN
1	C	261	LEU
1	C	300	LEU
1	D	35	ASP
1	D	57	GLN
1	D	59	ARG
1	D	69	ASN
1	D	130	SER
1	D	134	VAL
1	D	194	ASN
1	D	261	LEU
1	D	300	LEU

Sometimes sidechains can be flipped to improve hydrogen bonding and reduce clashes. All (51) such sidechains are listed below:

Mol	Chain	Res	Type
1	A	36	HIS
1	A	57	GLN
1	A	69	ASN
1	A	75	ASN
1	A	79	ASN
1	A	91	GLN
1	A	110	HIS
1	A	122	GLN
1	A	183	ASN

Continued on next page...

Continued from previous page...

Mol	Chain	Res	Type
1	A	194	ASN
1	A	230	ASN
1	A	268	GLN
1	A	274	HIS
1	B	36	HIS
1	B	57	GLN
1	B	69	ASN
1	B	75	ASN
1	B	79	ASN
1	B	91	GLN
1	B	110	HIS
1	B	122	GLN
1	B	183	ASN
1	B	194	ASN
1	B	230	ASN
1	B	268	GLN
1	C	36	HIS
1	C	57	GLN
1	C	69	ASN
1	C	75	ASN
1	C	79	ASN
1	C	91	GLN
1	C	110	HIS
1	C	122	GLN
1	C	183	ASN
1	C	194	ASN
1	C	230	ASN
1	C	268	GLN
1	C	274	HIS
1	D	36	HIS
1	D	57	GLN
1	D	69	ASN
1	D	75	ASN
1	D	79	ASN
1	D	91	GLN
1	D	110	HIS
1	D	122	GLN
1	D	183	ASN
1	D	194	ASN
1	D	230	ASN
1	D	268	GLN
1	D	274	HIS

5.3.3 RNA [i](#)

There are no RNA molecules in this entry.

5.4 Non-standard residues in protein, DNA, RNA chains [i](#)

28 non-standard protein/DNA/RNA residues are modelled in this entry.

In the following table, the Counts columns list the number of bonds (or angles) for which Mogul statistics could be retrieved, the number of bonds (or angles) that are observed in the model and the number of bonds (or angles) that are defined in the Chemical Component Dictionary. The Link column lists molecule types, if any, to which the group is linked. The Z score for a bond length (or angle) is the number of standard deviations the observed value is removed from the expected value. A bond length (or angle) with $|Z| > 2$ is considered an outlier worth inspection. RMSZ is the root-mean-square of all Z scores of the bond lengths (or angles).

Mol	Type	Chain	Res	Link	Bond lengths			Bond angles		
					Counts	RMSZ	$\# Z > 2$	Counts	RMSZ	$\# Z > 2$
1	MLY	D	137	1	9,10,11	0.95	0	6,11,13	0.80	0
1	MLY	A	251	1	9,10,11	0.91	0	6,11,13	0.91	0
1	MLY	D	184	1	9,10,11	0.98	0	6,11,13	0.82	0
1	MLY	B	210	1	9,10,11	0.94	0	6,11,13	0.93	0
1	MLY	C	289	1	9,10,11	1.02	0	6,11,13	0.79	0
1	MLY	A	289	1	9,10,11	0.98	0	6,11,13	0.84	0
1	MLY	A	114	1	9,10,11	0.99	0	6,11,13	0.65	0
1	MLY	A	137	1	9,10,11	0.91	0	6,11,13	0.77	0
1	MLY	C	114	1	9,10,11	0.92	0	6,11,13	0.70	0
1	MLY	A	210	1	9,10,11	0.98	0	6,11,13	0.90	0
1	MLY	C	45	1	9,10,11	0.97	0	6,11,13	1.13	0
1	MLY	C	210	1	9,10,11	0.92	0	6,11,13	0.85	0
1	MLY	D	289	1	9,10,11	1.01	0	6,11,13	0.78	0
1	MLY	B	251	1	9,10,11	0.94	0	6,11,13	0.71	0
1	MLY	B	184	1	9,10,11	1.02	0	6,11,13	0.84	0
1	MLY	B	137	1	9,10,11	0.90	0	6,11,13	0.82	0
1	MLY	C	251	1	9,10,11	0.98	0	6,11,13	0.77	0
1	MLY	A	45	1	9,10,11	0.90	0	6,11,13	0.96	1 (16%)
1	MLY	A	184	1	9,10,11	1.05	0	6,11,13	0.76	0
1	MLY	D	251	1	9,10,11	0.95	0	6,11,13	0.70	0
1	MLY	C	184	1	9,10,11	0.99	0	6,11,13	0.68	0
1	MLY	D	114	1	9,10,11	0.84	0	6,11,13	0.62	0
1	MLY	D	45	1	9,10,11	1.00	0	6,11,13	0.82	0
1	MLY	B	289	1	9,10,11	0.99	0	6,11,13	0.75	0
1	MLY	B	45	1	9,10,11	1.00	0	6,11,13	0.96	1 (16%)
1	MLY	B	114	1	9,10,11	0.92	0	6,11,13	0.59	0
1	MLY	C	137	1	9,10,11	0.88	0	6,11,13	0.85	0

Mol	Type	Chain	Res	Link	Bond lengths			Bond angles		
					Counts	RMSZ	# Z > 2	Counts	RMSZ	# Z > 2
1	MLY	D	210	1	9,10,11	0.89	0	6,11,13	0.83	0

In the following table, the Chirals column lists the number of chiral outliers, the number of chiral centers analysed, the number of these observed in the model and the number defined in the Chemical Component Dictionary. Similar counts are reported in the Torsion and Rings columns. '-' means no outliers of that kind were identified.

Mol	Type	Chain	Res	Link	Chirals	Torsions	Rings
1	MLY	D	137	1	-	5/8/9/11	-
1	MLY	A	251	1	-	4/8/9/11	-
1	MLY	D	184	1	-	4/8/9/11	-
1	MLY	B	210	1	-	3/8/9/11	-
1	MLY	C	289	1	-	4/8/9/11	-
1	MLY	A	289	1	-	3/8/9/11	-
1	MLY	A	114	1	-	4/8/9/11	-
1	MLY	A	137	1	-	4/8/9/11	-
1	MLY	C	114	1	-	4/8/9/11	-
1	MLY	A	210	1	-	3/8/9/11	-
1	MLY	C	45	1	-	4/8/9/11	-
1	MLY	C	210	1	-	3/8/9/11	-
1	MLY	D	289	1	-	4/8/9/11	-
1	MLY	B	251	1	-	4/8/9/11	-
1	MLY	B	184	1	-	4/8/9/11	-
1	MLY	B	137	1	-	4/8/9/11	-
1	MLY	C	251	1	-	4/8/9/11	-
1	MLY	A	45	1	-	4/8/9/11	-
1	MLY	A	184	1	-	4/8/9/11	-
1	MLY	D	251	1	-	4/8/9/11	-
1	MLY	C	184	1	-	3/8/9/11	-
1	MLY	D	114	1	-	6/8/9/11	-
1	MLY	D	45	1	-	3/8/9/11	-
1	MLY	B	289	1	-	4/8/9/11	-
1	MLY	B	45	1	-	3/8/9/11	-
1	MLY	B	114	1	-	5/8/9/11	-
1	MLY	C	137	1	-	5/8/9/11	-
1	MLY	D	210	1	-	3/8/9/11	-

There are no bond length outliers.

All (2) bond angle outliers are listed below:

Mol	Chain	Res	Type	Atoms	Z	Observed(°)	Ideal(°)
1	B	45	MLY	CD-CE-NZ	2.07	119.38	113.79
1	A	45	MLY	CD-CE-NZ	2.00	119.20	113.79

There are no chirality outliers.

All (109) torsion outliers are listed below:

Mol	Chain	Res	Type	Atoms
1	A	114	MLY	C-CA-CB-CG
1	A	137	MLY	N-CA-CB-CG
1	A	137	MLY	C-CA-CB-CG
1	A	251	MLY	N-CA-CB-CG
1	A	289	MLY	C-CA-CB-CG
1	B	114	MLY	C-CA-CB-CG
1	B	114	MLY	O-C-CA-CB
1	B	137	MLY	N-CA-CB-CG
1	B	137	MLY	C-CA-CB-CG
1	B	251	MLY	N-CA-CB-CG
1	B	251	MLY	C-CA-CB-CG
1	B	289	MLY	C-CA-CB-CG
1	C	114	MLY	C-CA-CB-CG
1	C	137	MLY	N-CA-CB-CG
1	C	137	MLY	C-CA-CB-CG
1	C	251	MLY	N-CA-CB-CG
1	C	251	MLY	C-CA-CB-CG
1	C	289	MLY	C-CA-CB-CG
1	D	114	MLY	C-CA-CB-CG
1	D	114	MLY	O-C-CA-CB
1	D	137	MLY	N-CA-CB-CG
1	D	137	MLY	C-CA-CB-CG
1	D	251	MLY	N-CA-CB-CG
1	D	251	MLY	C-CA-CB-CG
1	D	289	MLY	C-CA-CB-CG
1	A	45	MLY	CD-CE-NZ-CH1
1	A	114	MLY	CD-CE-NZ-CH2
1	A	184	MLY	CD-CE-NZ-CH1
1	A	184	MLY	CD-CE-NZ-CH2
1	B	114	MLY	CD-CE-NZ-CH1
1	B	184	MLY	CD-CE-NZ-CH1
1	C	45	MLY	CD-CE-NZ-CH1
1	C	114	MLY	CD-CE-NZ-CH1

Continued on next page...

Continued from previous page...

Mol	Chain	Res	Type	Atoms
1	C	184	MLY	CD-CE-NZ-CH1
1	C	184	MLY	CD-CE-NZ-CH2
1	D	45	MLY	CD-CE-NZ-CH1
1	D	184	MLY	CD-CE-NZ-CH1
1	D	184	MLY	CD-CE-NZ-CH2
1	B	289	MLY	CG-CD-CE-NZ
1	A	289	MLY	CG-CD-CE-NZ
1	C	289	MLY	CG-CD-CE-NZ
1	D	289	MLY	CG-CD-CE-NZ
1	A	45	MLY	CD-CE-NZ-CH2
1	A	114	MLY	CD-CE-NZ-CH1
1	A	251	MLY	CD-CE-NZ-CH2
1	B	45	MLY	CD-CE-NZ-CH1
1	B	45	MLY	CD-CE-NZ-CH2
1	B	114	MLY	CD-CE-NZ-CH2
1	B	184	MLY	CD-CE-NZ-CH2
1	C	114	MLY	CD-CE-NZ-CH2
1	C	251	MLY	CD-CE-NZ-CH2
1	D	114	MLY	CD-CE-NZ-CH1
1	D	114	MLY	CD-CE-NZ-CH2
1	B	251	MLY	CD-CE-NZ-CH2
1	C	45	MLY	CD-CE-NZ-CH2
1	D	45	MLY	CD-CE-NZ-CH2
1	D	251	MLY	CD-CE-NZ-CH2
1	C	137	MLY	CG-CD-CE-NZ
1	A	137	MLY	CA-CB-CG-CD
1	D	137	MLY	CA-CB-CG-CD
1	B	137	MLY	CA-CB-CG-CD
1	B	137	MLY	CG-CD-CE-NZ
1	B	184	MLY	CE-CD-CG-CB
1	A	184	MLY	CE-CD-CG-CB
1	C	184	MLY	CE-CD-CG-CB
1	D	184	MLY	CE-CD-CG-CB
1	A	137	MLY	CG-CD-CE-NZ
1	D	137	MLY	CG-CD-CE-NZ
1	A	210	MLY	CE-CD-CG-CB
1	B	210	MLY	CE-CD-CG-CB
1	C	210	MLY	CE-CD-CG-CB
1	D	210	MLY	CE-CD-CG-CB
1	A	114	MLY	CA-CB-CG-CD
1	C	114	MLY	CA-CB-CG-CD
1	C	137	MLY	CA-CB-CG-CD

Continued on next page...

Continued from previous page...

Mol	Chain	Res	Type	Atoms
1	C	45	MLY	CG-CD-CE-NZ
1	B	114	MLY	CA-CB-CG-CD
1	D	114	MLY	CA-CB-CG-CD
1	A	251	MLY	C-CA-CB-CG
1	D	210	MLY	CD-CE-NZ-CH2
1	B	45	MLY	CG-CD-CE-NZ
1	D	45	MLY	CG-CD-CE-NZ
1	A	45	MLY	CG-CD-CE-NZ
1	D	210	MLY	CG-CD-CE-NZ
1	B	210	MLY	CG-CD-CE-NZ
1	B	210	MLY	CD-CE-NZ-CH2
1	A	210	MLY	CG-CD-CE-NZ
1	C	210	MLY	CD-CE-NZ-CH2
1	C	210	MLY	CG-CD-CE-NZ
1	A	210	MLY	CD-CE-NZ-CH2
1	A	289	MLY	CE-CD-CG-CB
1	D	184	MLY	CA-CB-CG-CD
1	B	251	MLY	CE-CD-CG-CB
1	D	251	MLY	CE-CD-CG-CB
1	A	184	MLY	CA-CB-CG-CD
1	B	184	MLY	CA-CB-CG-CD
1	C	289	MLY	CE-CD-CG-CB
1	A	251	MLY	CE-CD-CG-CB
1	A	45	MLY	CA-CB-CG-CD
1	D	289	MLY	CE-CD-CG-CB
1	C	137	MLY	CD-CE-NZ-CH1
1	C	251	MLY	CE-CD-CG-CB
1	B	289	MLY	CE-CD-CG-CB
1	C	45	MLY	CA-CB-CG-CD
1	B	289	MLY	N-CA-CB-CG
1	C	289	MLY	N-CA-CB-CG
1	D	289	MLY	N-CA-CB-CG
1	D	137	MLY	CD-CE-NZ-CH1
1	D	114	MLY	CG-CD-CE-NZ

There are no ring outliers.

15 monomers are involved in 26 short contacts:

Mol	Chain	Res	Type	Clashes	Symm-Clashes
1	D	137	MLY	1	0
1	A	251	MLY	2	0
1	B	210	MLY	2	0

Continued on next page...

Continued from previous page...

Mol	Chain	Res	Type	Clashes	Symm-Clashes
1	C	289	MLY	3	0
1	A	289	MLY	2	0
1	A	210	MLY	1	0
1	C	45	MLY	2	0
1	C	210	MLY	2	0
1	D	289	MLY	1	0
1	A	45	MLY	1	0
1	D	45	MLY	2	0
1	B	289	MLY	1	0
1	B	45	MLY	2	0
1	C	137	MLY	1	0
1	D	210	MLY	3	0

5.5 Carbohydrates [i](#)

There are no monosaccharides in this entry.

5.6 Ligand geometry [i](#)

8 ligands are modelled in this entry.

In the following table, the Counts columns list the number of bonds (or angles) for which Mogul statistics could be retrieved, the number of bonds (or angles) that are observed in the model and the number of bonds (or angles) that are defined in the Chemical Component Dictionary. The Link column lists molecule types, if any, to which the group is linked. The Z score for a bond length (or angle) is the number of standard deviations the observed value is removed from the expected value. A bond length (or angle) with $|Z| > 2$ is considered an outlier worth inspection. RMSZ is the root-mean-square of all Z scores of the bond lengths (or angles).

Mol	Type	Chain	Res	Link	Bond lengths			Bond angles		
					Counts	RMSZ	# Z > 2	Counts	RMSZ	# Z > 2
2	FMN	C	400	-	33,33,33	1.42	6 (18%)	48,50,50	2.15	16 (33%)
3	GOL	A	500	-	5,5,5	0.38	0	5,5,5	0.28	0
2	FMN	A	400	-	33,33,33	1.42	4 (12%)	48,50,50	2.03	16 (33%)
2	FMN	D	400	-	33,33,33	1.37	6 (18%)	48,50,50	2.16	18 (37%)
3	GOL	B	500	-	5,5,5	0.30	0	5,5,5	0.31	0
3	GOL	D	500	-	5,5,5	0.36	0	5,5,5	0.42	0
3	GOL	C	500	-	5,5,5	0.39	0	5,5,5	0.31	0
2	FMN	B	400	-	33,33,33	1.20	3 (9%)	48,50,50	1.69	13 (27%)

In the following table, the Chirals column lists the number of chiral outliers, the number of chiral

centers analysed, the number of these observed in the model and the number defined in the Chemical Component Dictionary. Similar counts are reported in the Torsion and Rings columns. '2' means no outliers of that kind were identified.

Mol	Type	Chain	Res	Link	Chirals	Torsions	Rings
2	FMN	C	400	-	-	10/18/18/18	0/3/3/3
3	GOL	A	500	-	-	2/4/4/4	-
2	FMN	A	400	-	-	8/18/18/18	0/3/3/3
2	FMN	D	400	-	-	12/18/18/18	0/3/3/3
3	GOL	B	500	-	-	0/4/4/4	-
3	GOL	D	500	-	-	0/4/4/4	-
3	GOL	C	500	-	-	0/4/4/4	-
2	FMN	B	400	-	-	11/18/18/18	0/3/3/3

All (19) bond length outliers are listed below:

Mol	Chain	Res	Type	Atoms	Z	Observed(Å)	Ideal(Å)
2	A	400	FMN	C4A-N5	4.58	1.39	1.30
2	C	400	FMN	C4A-N5	4.31	1.39	1.30
2	D	400	FMN	C4A-N5	4.12	1.38	1.30
2	B	400	FMN	C4A-N5	3.56	1.37	1.30
2	D	400	FMN	C4'-C3'	-3.50	1.46	1.53
2	C	400	FMN	C4'-C3'	-3.29	1.47	1.53
2	A	400	FMN	C4'-C3'	-3.20	1.47	1.53
2	C	400	FMN	C1'-C2'	-2.83	1.48	1.52
2	A	400	FMN	C1'-C2'	-2.74	1.48	1.52
2	A	400	FMN	C10-N1	2.63	1.38	1.33
2	B	400	FMN	C10-N1	2.59	1.38	1.33
2	D	400	FMN	C1'-C2'	-2.59	1.49	1.52
2	C	400	FMN	C9A-N10	-2.25	1.37	1.41
2	C	400	FMN	C10-N1	2.22	1.37	1.33
2	D	400	FMN	C10-N1	2.17	1.37	1.33
2	C	400	FMN	C4A-C10	-2.16	1.37	1.44
2	D	400	FMN	C9A-N10	-2.12	1.37	1.41
2	B	400	FMN	C4'-C3'	-2.04	1.49	1.53
2	D	400	FMN	C4A-C10	-2.00	1.38	1.44

All (63) bond angle outliers are listed below:

Mol	Chain	Res	Type	Atoms	Z	Observed(°)	Ideal(°)
2	C	400	FMN	C5'-C4'-C3'	-6.15	100.33	112.20
2	D	400	FMN	C5'-C4'-C3'	-6.07	100.48	112.20
2	A	400	FMN	C5'-C4'-C3'	-5.44	101.69	112.20

Continued on next page...

Continued from previous page...

Mol	Chain	Res	Type	Atoms	Z	Observed(°)	Ideal(°)
2	C	400	FMN	O4'-C4'-C5'	5.27	121.75	109.92
2	A	400	FMN	O4'-C4'-C5'	4.76	120.61	109.92
2	A	400	FMN	C1'-C2'-C3'	-4.71	96.63	109.79
2	C	400	FMN	C1'-C2'-C3'	-4.55	97.06	109.79
2	D	400	FMN	C1'-C2'-C3'	-4.55	97.07	109.79
2	D	400	FMN	O4'-C4'-C5'	4.49	120.00	109.92
2	D	400	FMN	O3'-C3'-C2'	4.08	118.67	108.81
2	B	400	FMN	O4'-C4'-C5'	3.91	118.72	109.92
2	C	400	FMN	O3'-C3'-C2'	3.89	118.21	108.81
2	C	400	FMN	O2'-C2'-C1'	-3.79	100.63	109.80
2	B	400	FMN	C5'-C4'-C3'	-3.71	105.04	112.20
2	B	400	FMN	C4'-C3'-C2'	-3.68	105.70	113.36
2	A	400	FMN	C4-C4A-N5	3.52	123.25	118.23
2	D	400	FMN	O4'-C4'-C3'	-3.48	100.64	109.10
2	A	400	FMN	O2'-C2'-C1'	-3.46	101.43	109.80
2	C	400	FMN	C4-C4A-N5	3.46	123.16	118.23
2	A	400	FMN	O3'-C3'-C2'	3.25	116.67	108.81
2	C	400	FMN	O2'-C2'-C3'	3.25	116.99	109.10
2	D	400	FMN	C4-C4A-N5	3.17	122.75	118.23
2	D	400	FMN	O2'-C2'-C1'	-3.17	102.14	109.80
2	A	400	FMN	O2'-C2'-C3'	3.14	116.73	109.10
2	A	400	FMN	P-O5'-C5'	3.12	126.90	118.30
2	C	400	FMN	C4'-C3'-C2'	-3.06	107.00	113.36
2	A	400	FMN	C4'-C3'-C2'	-3.01	107.10	113.36
2	C	400	FMN	P-O5'-C5'	2.98	126.51	118.30
2	D	400	FMN	O2'-C2'-C3'	2.96	116.30	109.10
2	B	400	FMN	O3'-C3'-C2'	2.96	115.96	108.81
2	D	400	FMN	P-O5'-C5'	2.92	126.34	118.30
2	A	400	FMN	C4A-C4-N3	2.85	120.44	113.19
2	B	400	FMN	P-O5'-C5'	2.83	126.09	118.30
2	D	400	FMN	C4'-C3'-C2'	-2.80	107.54	113.36
2	C	400	FMN	C9A-C5A-N5	-2.77	119.42	122.43
2	C	400	FMN	C10-C4A-N5	-2.76	119.01	124.86
2	D	400	FMN	C9A-C5A-N5	-2.72	119.47	122.43
2	B	400	FMN	O4-C4-C4A	-2.70	119.43	126.60
2	D	400	FMN	C10-C4A-N5	-2.70	119.13	124.86
2	B	400	FMN	O5'-C5'-C4'	-2.66	102.27	109.36
2	C	400	FMN	C4-N3-C2	-2.57	120.89	125.64
2	C	400	FMN	C4A-C4-N3	2.57	119.72	113.19
2	A	400	FMN	C10-C4A-N5	-2.54	119.46	124.86
2	D	400	FMN	O4-C4-C4A	-2.51	119.93	126.60
2	B	400	FMN	O2'-C2'-C1'	-2.51	103.72	109.80

Continued on next page...

Continued from previous page...

Mol	Chain	Res	Type	Atoms	Z	Observed(°)	Ideal(°)
2	A	400	FMN	C4-N3-C2	-2.47	121.08	125.64
2	A	400	FMN	C9A-C5A-N5	-2.44	119.78	122.43
2	B	400	FMN	C4-N3-C2	-2.42	121.17	125.64
2	D	400	FMN	C4A-C10-N10	2.35	119.91	116.48
2	C	400	FMN	O5'-C5'-C4'	-2.33	103.14	109.36
2	D	400	FMN	C4-N3-C2	-2.32	121.35	125.64
2	A	400	FMN	O4'-C4'-C3'	-2.23	103.69	109.10
2	B	400	FMN	C4A-C4-N3	2.20	118.79	113.19
2	D	400	FMN	O5'-P-O1P	2.20	112.63	106.47
2	D	400	FMN	C4A-C4-N3	2.19	118.74	113.19
2	B	400	FMN	C1'-C2'-C3'	-2.14	103.81	109.79
2	D	400	FMN	O2-C2-N1	-2.10	118.34	121.83
2	B	400	FMN	C10-C4A-N5	-2.09	120.42	124.86
2	C	400	FMN	O4-C4-C4A	-2.08	121.08	126.60
2	C	400	FMN	C4A-C10-N10	2.07	119.50	116.48
2	A	400	FMN	O4-C4-C4A	-2.07	121.12	126.60
2	A	400	FMN	C4A-C10-N10	2.04	119.47	116.48
2	B	400	FMN	C4-C4A-C10	2.03	120.20	116.79

There are no chirality outliers.

All (43) torsion outliers are listed below:

Mol	Chain	Res	Type	Atoms
2	A	400	FMN	N10-C1'-C2'-O2'
2	A	400	FMN	N10-C1'-C2'-C3'
2	A	400	FMN	C1'-C2'-C3'-O3'
2	A	400	FMN	C1'-C2'-C3'-C4'
2	A	400	FMN	O2'-C2'-C3'-O3'
2	A	400	FMN	O2'-C2'-C3'-C4'
2	A	400	FMN	C3'-C4'-C5'-O5'
2	A	400	FMN	O4'-C4'-C5'-O5'
2	B	400	FMN	C2'-C1'-N10-C10
2	B	400	FMN	N10-C1'-C2'-O2'
2	B	400	FMN	N10-C1'-C2'-C3'
2	B	400	FMN	C1'-C2'-C3'-O3'
2	B	400	FMN	C1'-C2'-C3'-C4'
2	B	400	FMN	O2'-C2'-C3'-O3'
2	B	400	FMN	O2'-C2'-C3'-C4'
2	B	400	FMN	C3'-C4'-C5'-O5'
2	B	400	FMN	O4'-C4'-C5'-O5'
2	C	400	FMN	N10-C1'-C2'-O2'
2	C	400	FMN	N10-C1'-C2'-C3'

Continued on next page...

Continued from previous page...

Mol	Chain	Res	Type	Atoms
2	C	400	FMN	C1'-C2'-C3'-O3'
2	C	400	FMN	C1'-C2'-C3'-C4'
2	C	400	FMN	O2'-C2'-C3'-O3'
2	C	400	FMN	O2'-C2'-C3'-C4'
2	C	400	FMN	C3'-C4'-C5'-O5'
2	C	400	FMN	O4'-C4'-C5'-O5'
2	D	400	FMN	N10-C1'-C2'-O2'
2	D	400	FMN	N10-C1'-C2'-C3'
2	D	400	FMN	C1'-C2'-C3'-O3'
2	D	400	FMN	C1'-C2'-C3'-C4'
2	D	400	FMN	O2'-C2'-C3'-O3'
2	D	400	FMN	O2'-C2'-C3'-C4'
2	D	400	FMN	C3'-C4'-C5'-O5'
2	D	400	FMN	O4'-C4'-C5'-O5'
2	D	400	FMN	C5'-O5'-P-O1P
2	B	400	FMN	C2'-C1'-N10-C9A
3	A	500	GOL	O1-C1-C2-O2
2	C	400	FMN	C5'-O5'-P-O1P
2	D	400	FMN	C5'-O5'-P-O3P
2	B	400	FMN	O3'-C3'-C4'-C5'
3	A	500	GOL	O1-C1-C2-C3
2	D	400	FMN	O3'-C3'-C4'-C5'
2	C	400	FMN	C2'-C1'-N10-C10
2	D	400	FMN	C2'-C1'-N10-C10

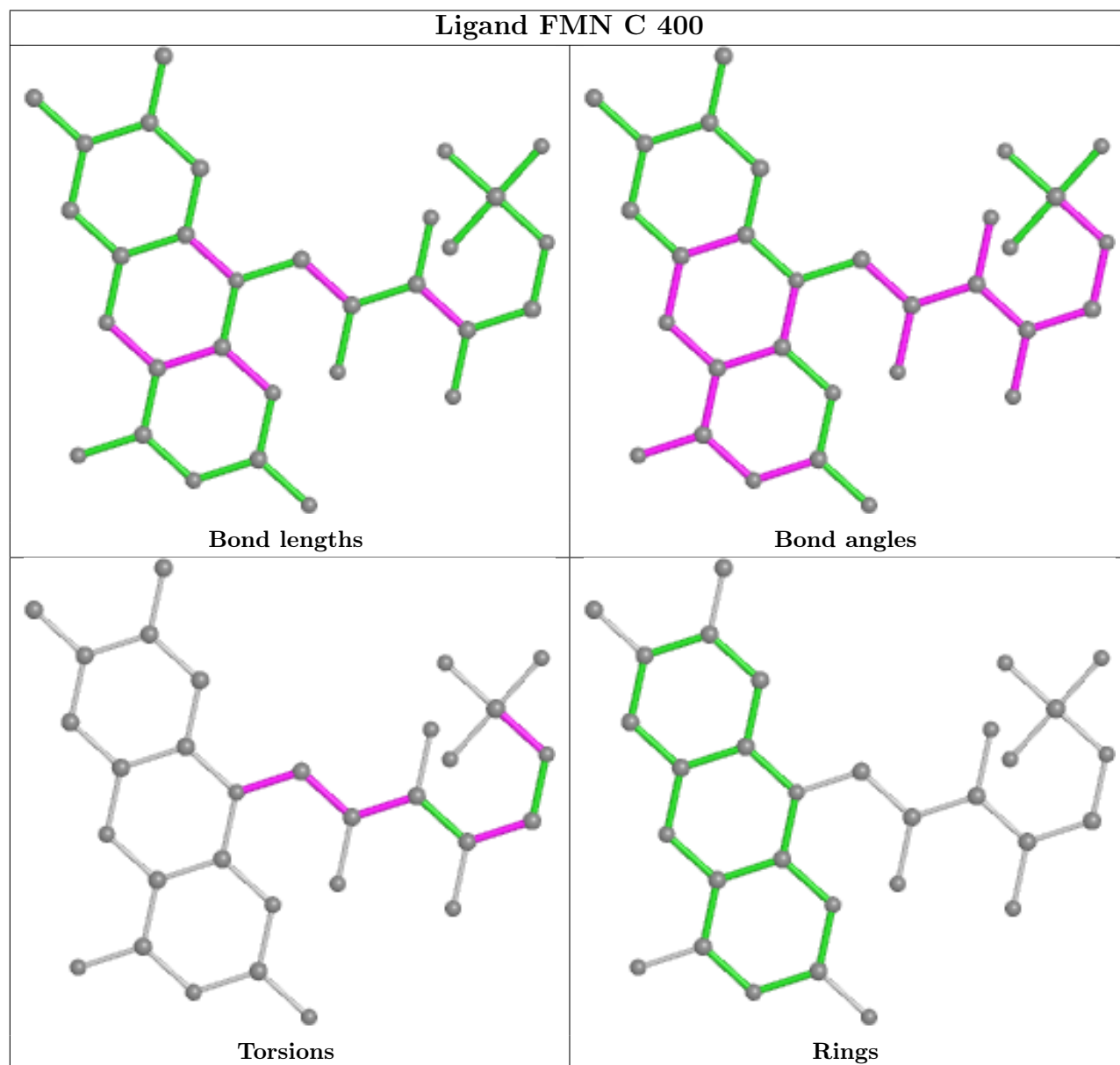
There are no ring outliers.

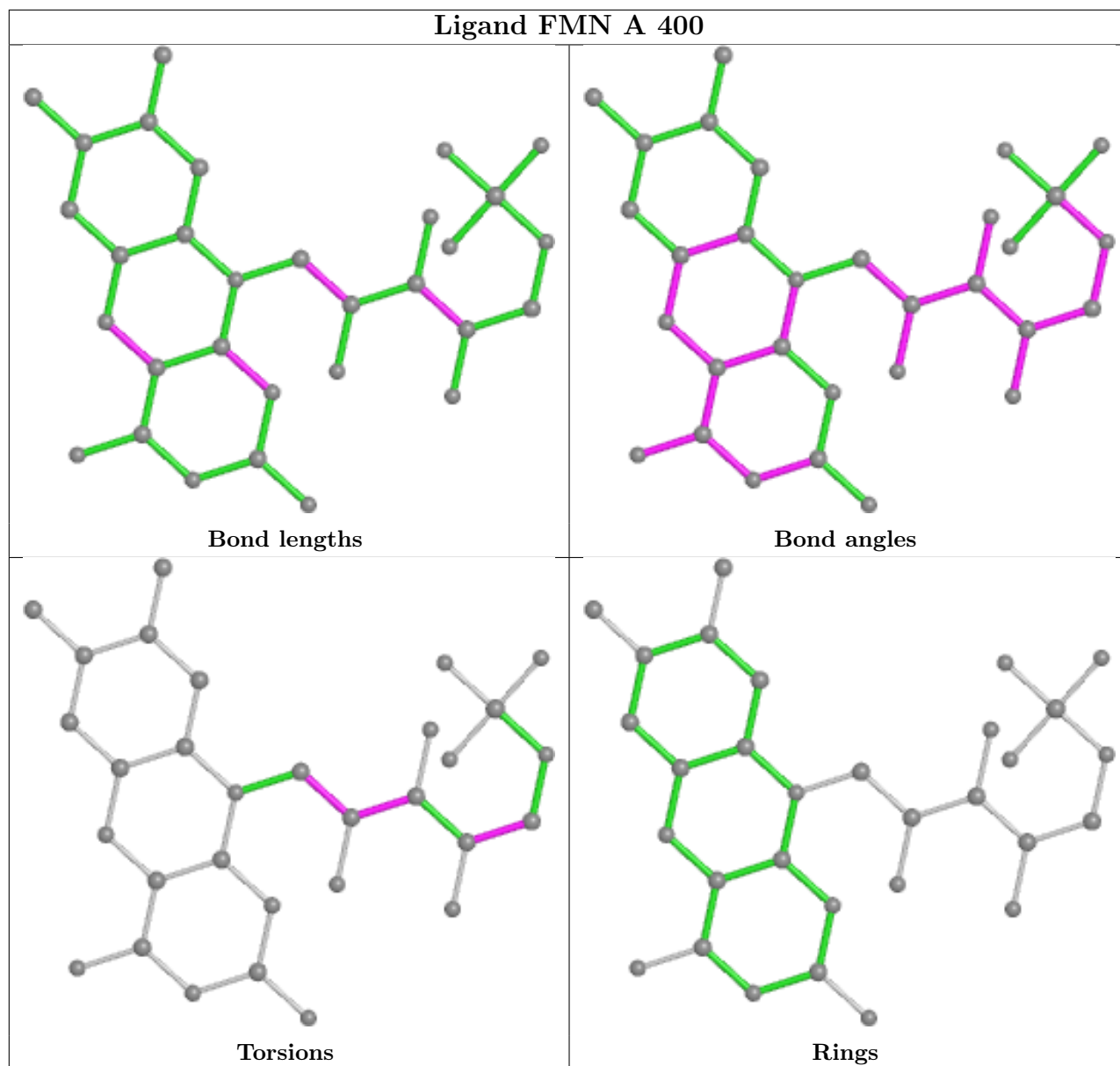
4 monomers are involved in 21 short contacts:

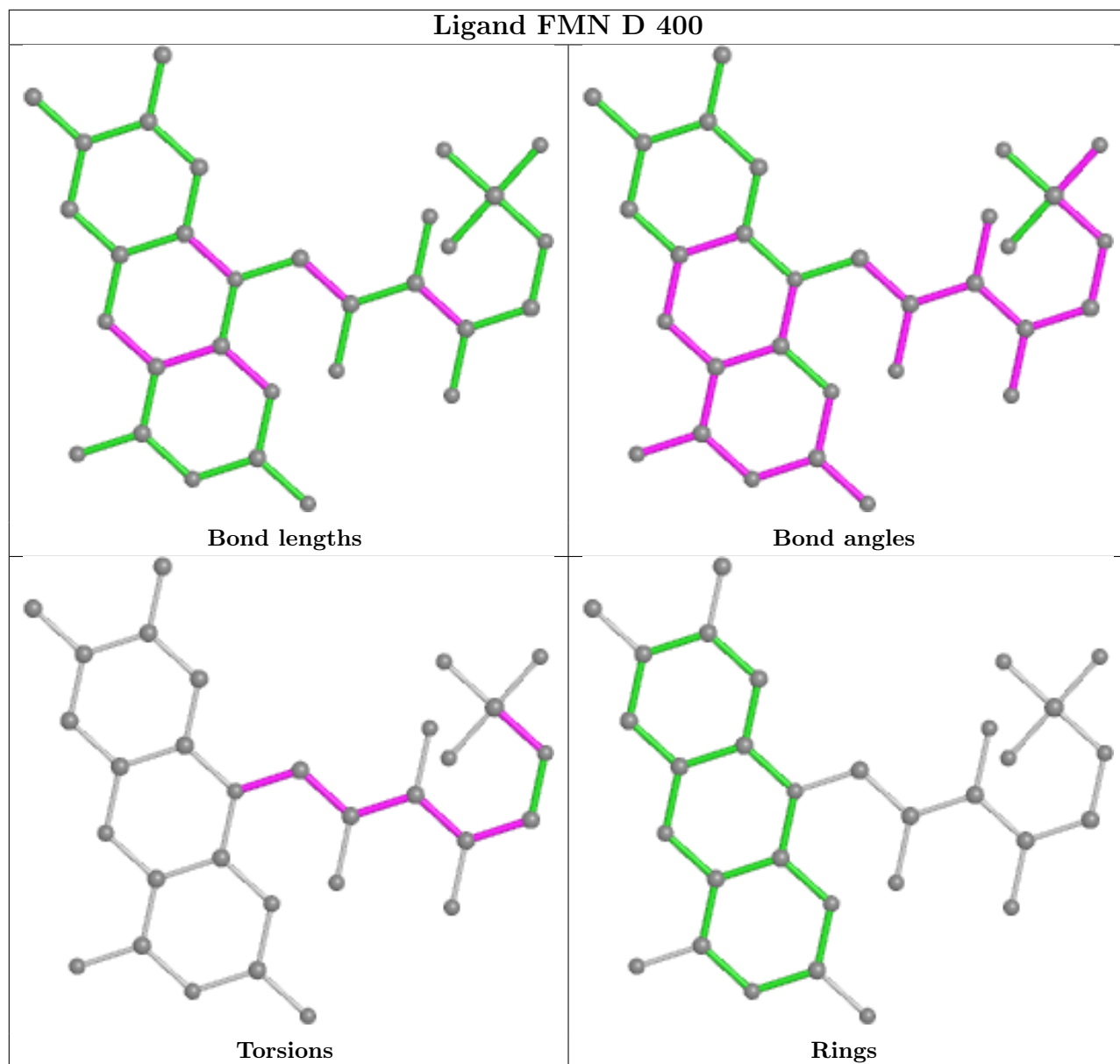
Mol	Chain	Res	Type	Clashes	Symm-Clashes
2	C	400	FMN	4	0
2	A	400	FMN	4	0
2	D	400	FMN	6	0
2	B	400	FMN	7	0

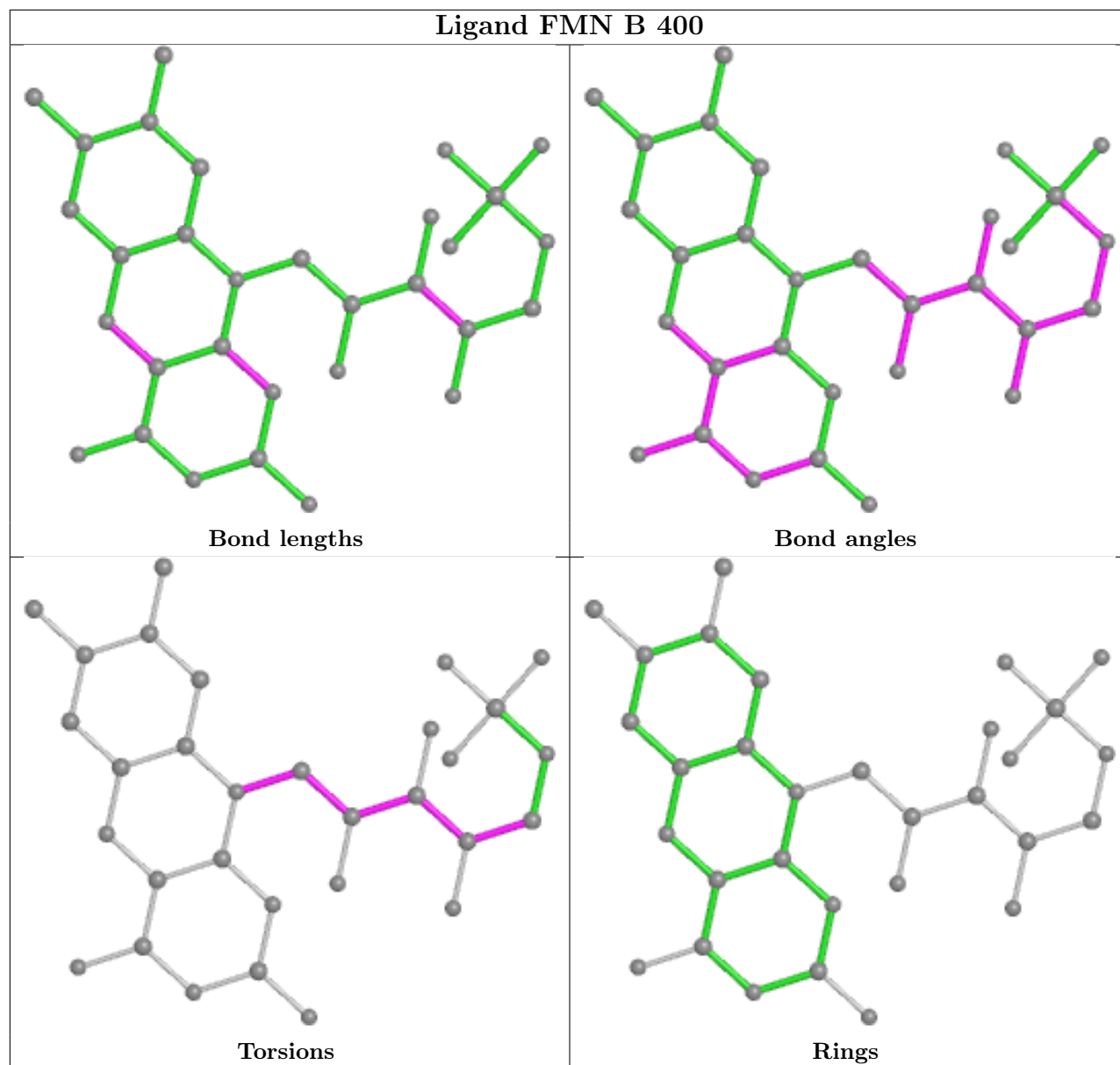
The following is a two-dimensional graphical depiction of Mogul quality analysis of bond lengths, bond angles, torsion angles, and ring geometry for all instances of the Ligand of Interest. In addition, ligands with molecular weight > 250 and outliers as shown on the validation Tables will also be included. For torsion angles, if less than 5% of the Mogul distribution of torsion angles is within 10 degrees of the torsion angle in question, then that torsion angle is considered an outlier. Any bond that is central to one or more torsion angles identified as an outlier by Mogul will be highlighted in the graph. For rings, the root-mean-square deviation (RMSD) between the ring in question and similar rings identified by Mogul is calculated over all ring torsion angles. If the

average RMSD is greater than 60 degrees and the minimal RMSD between the ring in question and any Mogul-identified rings is also greater than 60 degrees, then that ring is considered an outlier. The outliers are highlighted in purple. The color gray indicates Mogul did not find sufficient equivalents in the CSD to analyse the geometry.









5.7 Other polymers [\(i\)](#)

There are no such residues in this entry.

5.8 Polymer linkage issues [\(i\)](#)

There are no chain breaks in this entry.

6 Fit of model and data

6.1 Protein, DNA and RNA chains

In the following table, the column labelled ‘#RSRZ > 2’ contains the number (and percentage) of RSRZ outliers, followed by percent RSRZ outliers for the chain as percentile scores relative to all X-ray entries and entries of similar resolution. The OWAB column contains the minimum, median, 95th percentile and maximum values of the occupancy-weighted average B-factor per residue. The column labelled ‘Q < 0.9’ lists the number of (and percentage) of residues with an average occupancy less than 0.9.

Mol	Chain	Analysed	<RSRZ>	#RSRZ>2	OWAB(Å ²)	Q<0.9
1	A	303/345 (87%)	-0.01	4 (1%) 77 75	12, 25, 48, 78	0
1	B	303/345 (87%)	0.79	39 (12%) 3 3	14, 39, 73, 148	0
1	C	303/345 (87%)	0.11	10 (3%) 46 45	13, 27, 50, 116	0
1	D	302/345 (87%)	0.39	22 (7%) 15 13	14, 30, 59, 142	0
All	All	1211/1380 (87%)	0.32	75 (6%) 20 19	12, 29, 62, 148	0

All (75) RSRZ outliers are listed below:

Mol	Chain	Res	Type	RSRZ
1	B	92	PRO	7.5
1	D	135	PRO	7.3
1	B	134	VAL	6.6
1	B	135	PRO	5.8
1	C	92	PRO	5.7
1	B	24	TYR	5.2
1	B	93	ASP	5.1
1	D	133	ASN	4.8
1	D	293	THR	4.5
1	D	134	VAL	4.5
1	B	245	ILE	4.4
1	D	92	PRO	4.3
1	B	91	GLN	4.3
1	D	245	ILE	3.9
1	B	291	ILE	3.8
1	B	246	GLY	3.8
1	D	93	ASP	3.8
1	C	93	ASP	3.8
1	D	136	GLY	3.7
1	D	192	CYS	3.6
1	B	136	GLY	3.5

Continued on next page...

Continued from previous page...

Mol	Chain	Res	Type	RSRZ
1	B	85	VAL	3.5
1	B	36	HIS	3.1
1	C	311	ALA	3.0
1	B	133	ASN	2.9
1	C	299	THR	2.8
1	D	193	ILE	2.8
1	C	193	ILE	2.8
1	B	90	LYS	2.8
1	B	131	CYS	2.8
1	B	293	THR	2.8
1	D	298	GLU	2.8
1	A	297	TYR	2.7
1	D	297	TYR	2.7
1	B	294	GLU	2.6
1	D	2	VAL	2.6
1	B	223	VAL	2.6
1	B	282	LYS	2.6
1	B	297	TYR	2.6
1	D	247	THR	2.6
1	D	244	ILE	2.6
1	B	132	PRO	2.5
1	B	50	GLU	2.5
1	B	94	SER	2.5
1	B	247	THR	2.4
1	D	91	GLN	2.4
1	D	296	GLY	2.3
1	B	20	ALA	2.3
1	B	29	GLU	2.3
1	D	132	PRO	2.3
1	B	77	GLY	2.3
1	D	291	ILE	2.3
1	B	267	VAL	2.3
1	B	18	MET	2.2
1	A	311	ALA	2.2
1	B	39	ALA	2.2
1	B	2	VAL	2.2
1	B	100	SER	2.2
1	B	130	SER	2.2
1	B	301	GLU	2.2
1	B	268	GLN	2.2
1	B	118	ALA	2.2
1	D	3	SER	2.1

Continued on next page...

Continued from previous page...

Mol	Chain	Res	Type	RSRZ
1	B	191	ASN	2.1
1	C	298	GLU	2.1
1	C	94	SER	2.1
1	B	193	ILE	2.1
1	B	204	ASP	2.1
1	A	298	GLU	2.1
1	D	191	ASN	2.1
1	C	134	VAL	2.1
1	A	135	PRO	2.0
1	D	24	TYR	2.0
1	C	245	ILE	2.0
1	C	296	GLY	2.0

6.2 Non-standard residues in protein, DNA, RNA chains [i](#)

In the following table, the Atoms column lists the number of modelled atoms in the group and the number defined in the chemical component dictionary. The B-factors column lists the minimum, median, 95th percentile and maximum values of B factors of atoms in the group. The column labelled 'Q< 0.9' lists the number of atoms with occupancy less than 0.9.

Mol	Type	Chain	Res	Atoms	RSCC	RSR	B-factors(Å ²)	Q<0.9
1	MLY	B	137	11/12	0.75	0.34	53,67,77,81	0
1	MLY	D	137	11/12	0.75	0.34	54,77,95,96	0
1	MLY	B	251	11/12	0.85	0.26	48,54,70,76	0
1	MLY	A	251	11/12	0.86	0.22	35,43,48,52	0
1	MLY	C	137	11/12	0.87	0.21	35,42,51,64	0
1	MLY	B	184	11/12	0.87	0.18	22,25,39,45	0
1	MLY	D	184	11/12	0.87	0.19	18,22,35,36	0
1	MLY	D	251	11/12	0.87	0.25	36,42,63,63	0
1	MLY	D	210	11/12	0.89	0.27	29,32,62,68	0
1	MLY	A	184	11/12	0.89	0.18	19,20,28,44	0
1	MLY	A	289	11/12	0.90	0.14	28,37,41,44	0
1	MLY	D	114	11/12	0.90	0.14	32,36,49,55	0
1	MLY	C	114	11/12	0.90	0.22	32,40,49,51	0
1	MLY	D	289	11/12	0.90	0.20	36,44,52,62	0
1	MLY	A	137	11/12	0.91	0.15	32,38,55,70	0
1	MLY	B	45	11/12	0.91	0.24	47,51,58,61	0
1	MLY	B	114	11/12	0.91	0.18	38,45,66,69	0
1	MLY	B	289	11/12	0.91	0.15	36,44,51,52	0
1	MLY	B	210	11/12	0.92	0.21	41,47,66,67	0
1	MLY	C	184	11/12	0.92	0.15	20,25,40,52	0
1	MLY	C	251	11/12	0.92	0.16	30,35,57,58	0

Continued on next page...

Continued from previous page...

Mol	Type	Chain	Res	Atoms	RSCC	RSR	B-factors(\AA^2)	Q<0.9
1	MLY	C	45	11/12	0.93	0.16	19,20,23,26	0
1	MLY	C	289	11/12	0.93	0.18	34,37,43,50	0
1	MLY	A	114	11/12	0.94	0.16	28,32,44,46	0
1	MLY	C	210	11/12	0.94	0.26	27,36,54,56	0
1	MLY	D	45	11/12	0.94	0.17	22,28,33,33	0
1	MLY	A	210	11/12	0.96	0.17	25,31,44,46	0
1	MLY	A	45	11/12	0.97	0.13	17,22,32,33	0

6.3 Carbohydrates [i](#)

There are no monosaccharides in this entry.

6.4 Ligands [i](#)

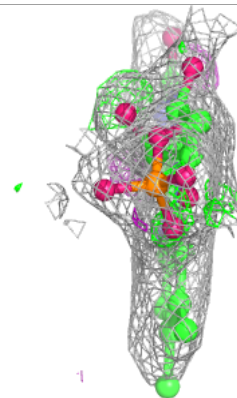
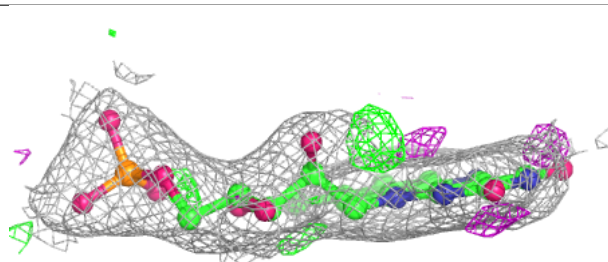
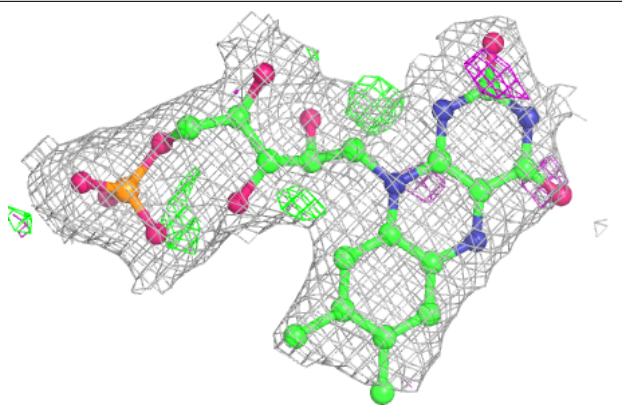
In the following table, the Atoms column lists the number of modelled atoms in the group and the number defined in the chemical component dictionary. The B-factors column lists the minimum, median, 95th percentile and maximum values of B factors of atoms in the group. The column labelled 'Q< 0.9' lists the number of atoms with occupancy less than 0.9.

Mol	Type	Chain	Res	Atoms	RSCC	RSR	B-factors(\AA^2)	Q<0.9
3	GOL	B	500	6/6	0.92	0.14	30,32,35,35	0
2	FMN	B	400	31/31	0.93	0.23	27,33,39,47	0
2	FMN	D	400	31/31	0.93	0.20	17,25,33,36	0
2	FMN	A	400	31/31	0.93	0.18	17,26,31,39	0
3	GOL	C	500	6/6	0.93	0.15	21,25,29,30	0
2	FMN	C	400	31/31	0.94	0.17	17,25,31,34	0
3	GOL	A	500	6/6	0.94	0.17	23,27,30,31	0
3	GOL	D	500	6/6	0.96	0.17	28,31,33,35	0

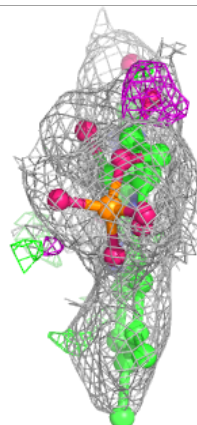
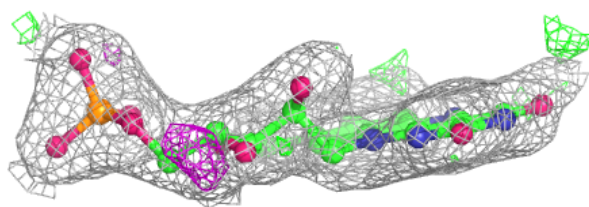
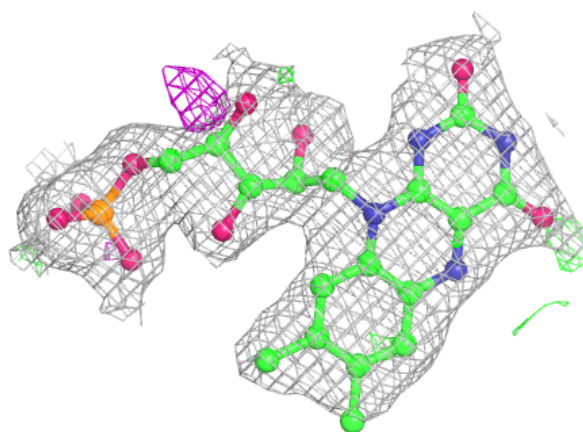
The following is a graphical depiction of the model fit to experimental electron density of all instances of the Ligand of Interest. In addition, ligands with molecular weight > 250 and outliers as shown on the geometry validation Tables will also be included. Each fit is shown from different orientation to approximate a three-dimensional view.

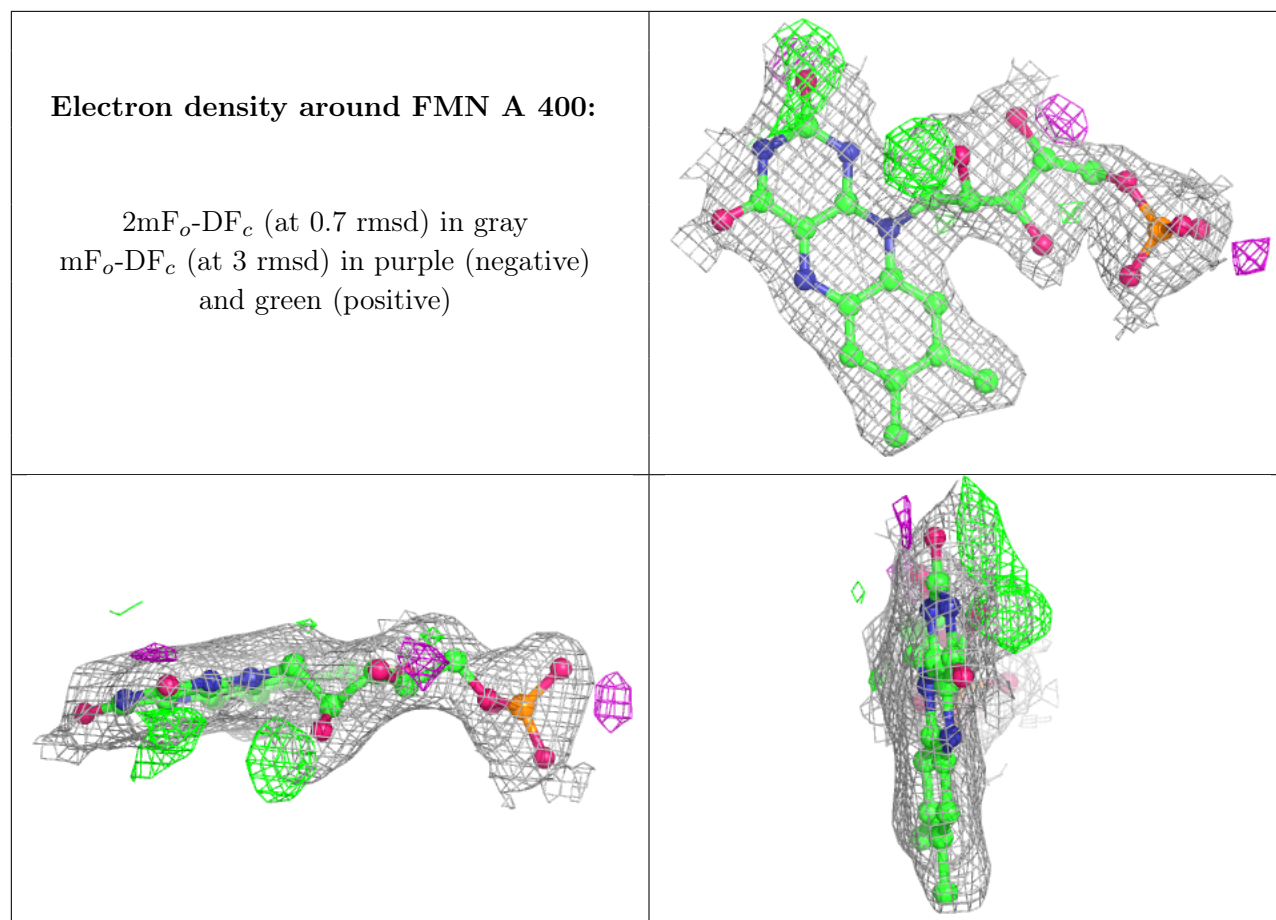
Electron density around FMN B 400:

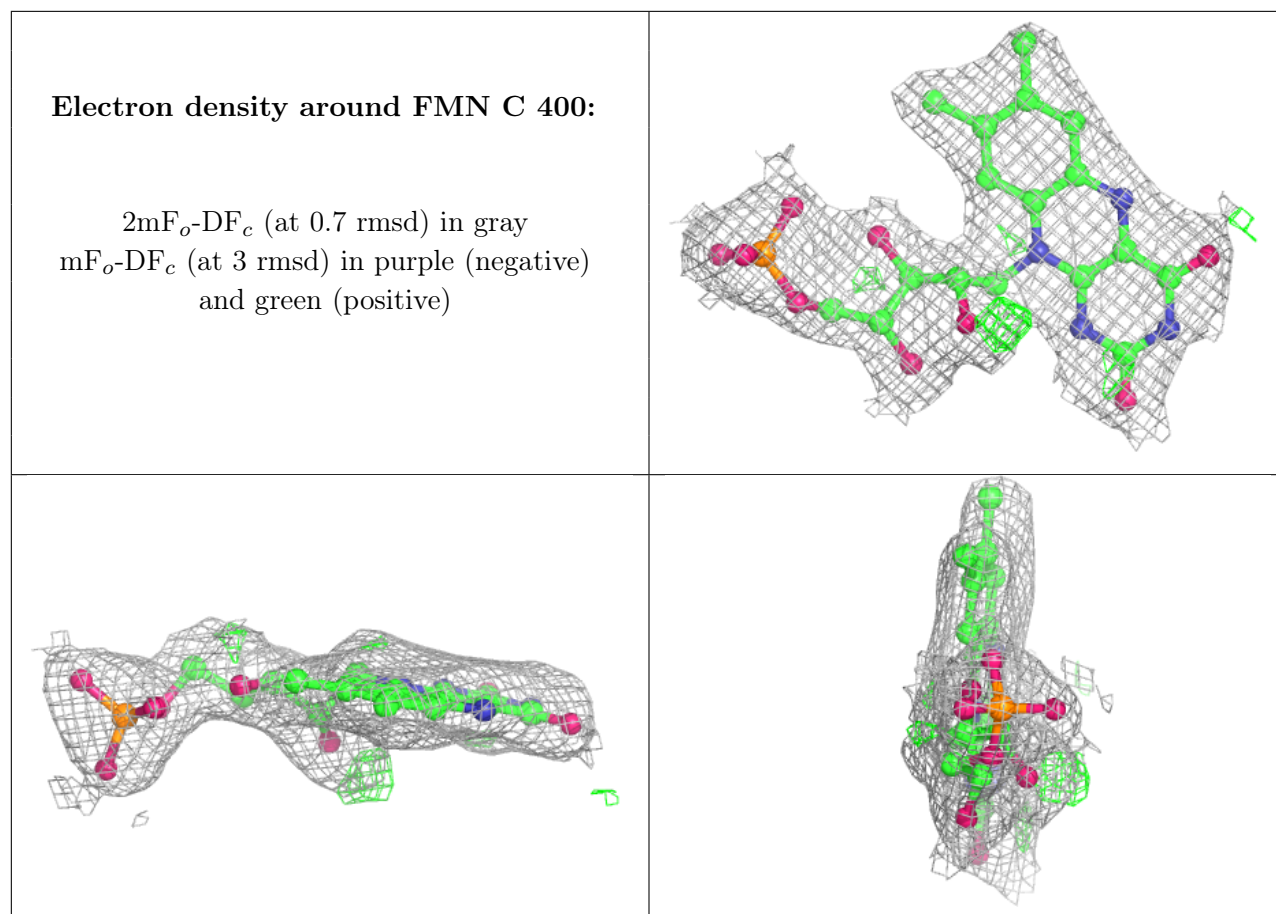
$2mF_o-DF_c$ (at 0.7 rmsd) in gray
 mF_o-DF_c (at 3 rmsd) in purple (negative)
and green (positive)

**Electron density around FMN D 400:**

$2mF_o-DF_c$ (at 0.7 rmsd) in gray
 mF_o-DF_c (at 3 rmsd) in purple (negative)
and green (positive)







6.5 Other polymers [i](#)

There are no such residues in this entry.