



# Full wwPDB X-ray Structure Validation Report ⓘ

Jun 13, 2024 – 06:58 AM EDT

PDB ID : 4G1X  
Title : Crystal structure of Mycobacterium tuberculosis CYP121 in complex with 4-(1H-1,2,4-triazol-1-yl)quinolin-6-amine  
Authors : Hudson, S.A.  
Deposited on : 2012-07-11  
Resolution : 1.30 Å(reported)

This is a Full wwPDB X-ray Structure Validation Report for a publicly released PDB entry.

We welcome your comments at [validation@mail.wwpdb.org](mailto:validation@mail.wwpdb.org)

A user guide is available at

<https://www.wwpdb.org/validation/2017/XrayValidationReportHelp>

with specific help available everywhere you see the ⓘ symbol.

The types of validation reports are described at

<http://www.wwpdb.org/validation/2017/FAQs#types>.

---

The following versions of software and data (see [references ⓘ](#)) were used in the production of this report:

MolProbity : 4.02b-467  
Mogul : 2022.3.0, CSD as543be (2022)  
Xtriage (Phenix) : 1.20.1  
EDS : 2.36.2  
buster-report : 1.1.7 (2018)  
Percentile statistics : 20191225.v01 (using entries in the PDB archive December 25th 2019)  
Refmac : 5.8.0158  
CCP4 : 7.0.044 (Gargrove)  
Ideal geometry (proteins) : Engh & Huber (2001)  
Ideal geometry (DNA, RNA) : Parkinson et al. (1996)  
Validation Pipeline (wwPDB-VP) : 2.36.2

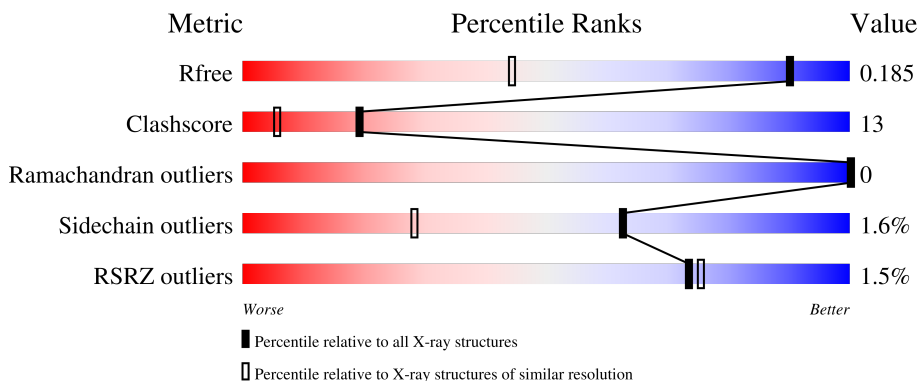
# 1 Overall quality at a glance

The following experimental techniques were used to determine the structure:

*X-RAY DIFFRACTION*

The reported resolution of this entry is 1.30 Å.

Percentile scores (ranging between 0-100) for global validation metrics of the entry are shown in the following graphic. The table shows the number of entries on which the scores are based.



Metric	Whole archive (#Entries)	Similar resolution (#Entries, resolution range(Å))
$R_{free}$	130704	1058 (1.30-1.30)
Clashscore	141614	1101 (1.30-1.30)
Ramachandran outliers	138981	1058 (1.30-1.30)
Sidechain outliers	138945	1058 (1.30-1.30)
RSRZ outliers	127900	1029 (1.30-1.30)

The table below summarises the geometric issues observed across the polymeric chains and their fit to the electron density. The red, orange, yellow and green segments of the lower bar indicate the fraction of residues that contain outliers for  $\geq 3$ , 2, 1 and 0 types of geometric quality criteria respectively. A grey segment represents the fraction of residues that are not modelled. The numeric value for each fraction is indicated below the corresponding segment, with a dot representing fractions  $\leq 5\%$ . The upper red bar (where present) indicates the fraction of residues that have poor fit to the electron density. The numeric value is given above the bar.

Mol	Chain	Length	Quality of chain
1	A	395	

The following table lists non-polymeric compounds, carbohydrate monomers and non-standard residues in protein, DNA, RNA chains that are outliers for geometric or electron-density-fit criteria:

Mol	Type	Chain	Res	Chirality	Geometry	Clashes	Electron density
4	DMS	A	405	-	-	X	-

*Continued on next page...*

*Continued from previous page...*

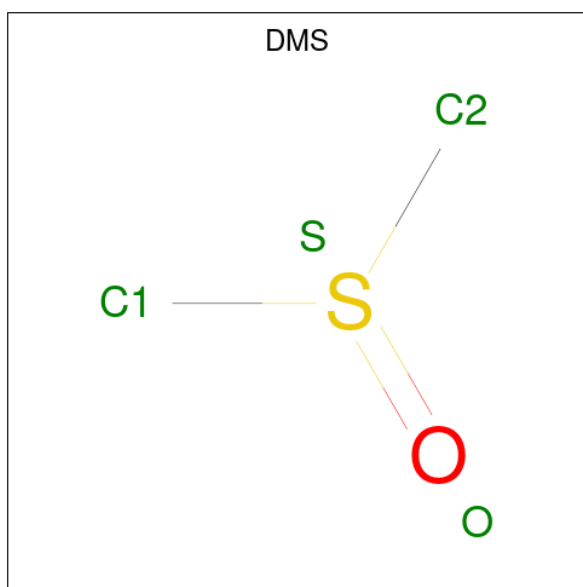
<b>Mol</b>	<b>Type</b>	<b>Chain</b>	<b>Res</b>	<b>Chirality</b>	<b>Geometry</b>	<b>Clashes</b>	<b>Electron density</b>
4	DMS	A	406	-	-	X	-
4	DMS	A	407	-	-	X	-
5	TQU	A	410	-	-	X	-





Mol	Chain	Residues	Atoms			ZeroOcc	AltConf
3	A	1	Total	O	S	0	1
			10	8	2		
3	A	1	Total	O	S	0	0
			5	4	1		
3	A	1	Total	O	S	0	0
			5	4	1		

- Molecule 4 is DIMETHYL SULFOXIDE (three-letter code: DMS) (formula: C<sub>2</sub>H<sub>6</sub>OS).



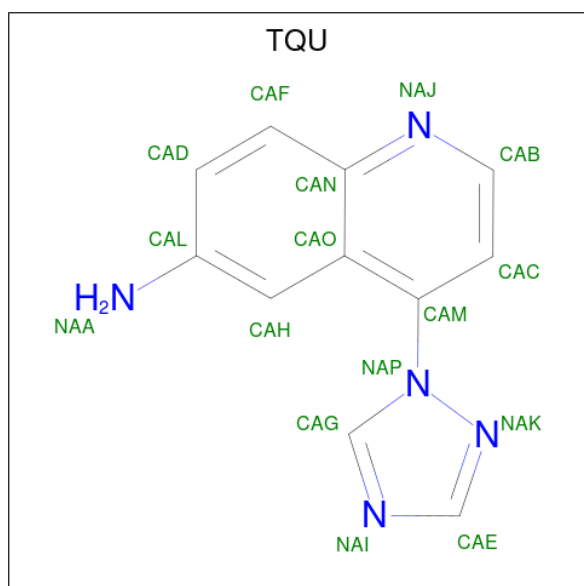
Mol	Chain	Residues	Atoms				ZeroOcc	AltConf
4	A	1	Total	C	O	S	0	0
			4	2	1	1		

*Continued on next page...*

Continued from previous page...

Mol	Chain	Residues	Atoms				ZeroOcc	AltConf
4	A	1	Total	C	O	S	0	0
			4	2	1	1		
4	A	1	Total	C	O	S	0	0
			4	2	1	1		
4	A	1	Total	C	O	S	0	0
			4	2	1	1		

- Molecule 5 is 4-(1H-1,2,4-triazol-1-yl)quinolin-6-amine (three-letter code: TQU) (formula:  $C_{11}H_9N_5$ ).



Mol	Chain	Residues	Atoms			ZeroOcc	AltConf
5	A	1	Total	C	N	0	0
			16	11	5		
5	A	1	Total	C	N	0	0
			16	11	5		

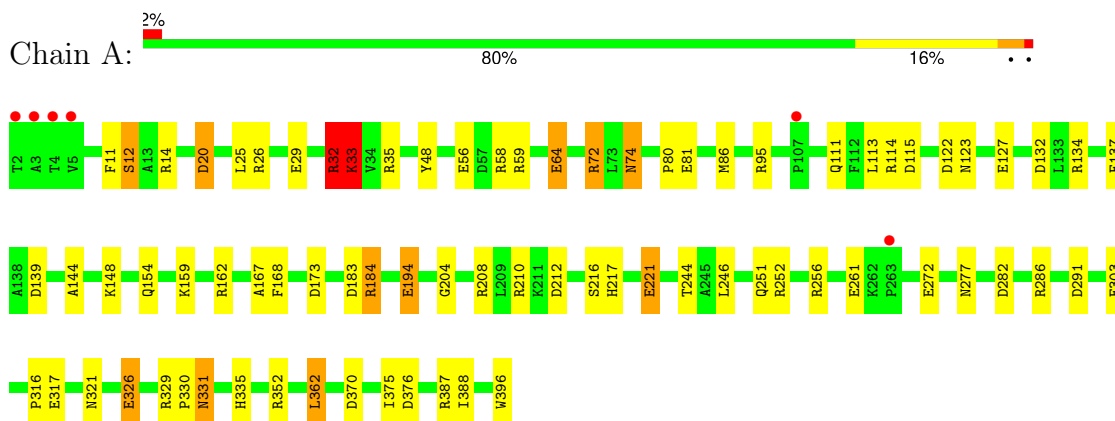
- Molecule 6 is water.

Mol	Chain	Residues	Atoms		ZeroOcc	AltConf
6	A	789	Total	O	0	41
			830	830		

### 3 Residue-property plots [i](#)

These plots are drawn for all protein, RNA, DNA and oligosaccharide chains in the entry. The first graphic for a chain summarises the proportions of the various outlier classes displayed in the second graphic. The second graphic shows the sequence view annotated by issues in geometry and electron density. Residues are color-coded according to the number of geometric quality criteria for which they contain at least one outlier: green = 0, yellow = 1, orange = 2 and red = 3 or more. A red dot above a residue indicates a poor fit to the electron density ( $RSRZ > 2$ ). Stretches of 2 or more consecutive residues without any outlier are shown as a green connector. Residues present in the sample, but not in the model, are shown in grey.

- Molecule 1: Cytochrome P450 121



## 4 Data and refinement statistics

Property	Value	Source
Space group	P 65 2 2	Depositor
Cell constants a, b, c, $\alpha$ , $\beta$ , $\gamma$	77.41Å 77.41Å 263.95Å 90.00° 90.00° 120.00°	Depositor
Resolution (Å)	37.14 – 1.30 37.14 – 1.30	Depositor EDS
% Data completeness (in resolution range)	99.6 (37.14-1.30) 99.6 (37.14-1.30)	Depositor EDS
$R_{merge}$	(Not available)	Depositor
$R_{sym}$	(Not available)	Depositor
$\langle I/\sigma(I) \rangle$ <sup>1</sup>	2.81 (at 1.30Å)	Xtrriage
Refinement program	REFMAC 5.6.0117	Depositor
R, $R_{free}$	0.162 , 0.186 0.161 , 0.185	Depositor DCC
$R_{free}$ test set	5776 reflections (5.01%)	wwPDB-VP
Wilson B-factor (Å <sup>2</sup> )	10.8	Xtrriage
Anisotropy	0.008	Xtrriage
Bulk solvent $k_{sol}$ (e/Å <sup>3</sup> ), $B_{sol}$ (Å <sup>2</sup> )	0.34 , 51.1	EDS
L-test for twinning <sup>2</sup>	$\langle  L  \rangle = 0.48$ , $\langle L^2 \rangle = 0.31$	Xtrriage
Estimated twinning fraction	No twinning to report.	Xtrriage
$F_o, F_c$ correlation	0.97	EDS
Total number of atoms	4073	wwPDB-VP
Average B, all atoms (Å <sup>2</sup> )	14.0	wwPDB-VP

Xtrriage's analysis on translational NCS is as follows: *The largest off-origin peak in the Patterson function is 6.32% of the height of the origin peak. No significant pseudotranslation is detected.*

<sup>1</sup>Intensities estimated from amplitudes.

<sup>2</sup>Theoretical values of  $\langle |L| \rangle$ ,  $\langle L^2 \rangle$  for acentric reflections are 0.5, 0.333 respectively for untwinned datasets, and 0.375, 0.2 for perfectly twinned datasets.



## 5 Model quality [i](#)

### 5.1 Standard geometry [i](#)

Bond lengths and bond angles in the following residue types are not validated in this section: DMS, SO4, HEM, TQU

The Z score for a bond length (or angle) is the number of standard deviations the observed value is removed from the expected value. A bond length (or angle) with  $|Z| > 5$  is considered an outlier worth inspection. RMSZ is the root-mean-square of all Z scores of the bond lengths (or angles).

Mol	Chain	Bond lengths		Bond angles	
		RMSZ	# Z  >5	RMSZ	# Z  >5
1	A	3.02	30/3265 (0.9%)	1.83	67/4439 (1.5%)

Chiral center outliers are detected by calculating the chiral volume of a chiral center and verifying if the center is modelled as a planar moiety or with the opposite hand. A planarity outlier is detected by checking planarity of atoms in a peptide group, atoms in a mainchain group or atoms of a sidechain that are expected to be planar.

Mol	Chain	#Chirality outliers	#Planarity outliers
1	A	0	1

All (30) bond length outliers are listed below:

Mol	Chain	Res	Type	Atoms	Z	Observed(Å)	Ideal(Å)
1	A	64[A]	GLU	CG-CD	80.53	2.72	1.51
1	A	64[B]	GLU	CG-CD	80.53	2.72	1.51
1	A	194[A]	GLU	CG-CD	66.21	2.51	1.51
1	A	194[B]	GLU	CG-CD	66.21	2.51	1.51
1	A	33[A]	LYS	CD-CE	10.54	1.77	1.51
1	A	33[B]	LYS	CD-CE	10.54	1.77	1.51
1	A	81	GLU	CD-OE1	10.21	1.36	1.25
1	A	32	ARG	CA-CB	-9.68	1.32	1.53
1	A	81	GLU	CD-OE2	8.82	1.35	1.25
1	A	32	ARG	CB-CG	-8.80	1.28	1.52
1	A	56	GLU	CG-CD	-8.01	1.40	1.51
1	A	56	GLU	CD-OE2	7.46	1.33	1.25
1	A	35	ARG	CZ-NH2	6.23	1.41	1.33
1	A	48	TYR	CG-CD1	6.22	1.47	1.39
1	A	25	LEU	N-CA	-6.04	1.34	1.46
1	A	256	ARG	CZ-NH2	5.90	1.40	1.33
1	A	272	GLU	CD-OE2	5.90	1.32	1.25
1	A	11	PHE	CG-CD1	5.74	1.47	1.38

*Continued on next page...*

Continued from previous page...

Mol	Chain	Res	Type	Atoms	Z	Observed(Å)	Ideal(Å)
1	A	59	ARG	CZ-NH1	5.71	1.40	1.33
1	A	184	ARG	CZ-NH1	5.70	1.40	1.33
1	A	326	GLU	CD-OE1	5.64	1.31	1.25
1	A	216[A]	SER	CB-OG	-5.59	1.34	1.42
1	A	216[B]	SER	CB-OG	-5.59	1.34	1.42
1	A	221	GLU	CD-OE2	5.43	1.31	1.25
1	A	32	ARG	NE-CZ	5.33	1.40	1.33
1	A	26	ARG	CZ-NH2	5.26	1.39	1.33
1	A	330	PRO	N-CD	-5.25	1.40	1.47
1	A	204	GLY	N-CA	5.24	1.53	1.46
1	A	168	PHE	CD1-CE1	5.19	1.49	1.39
1	A	335	HIS	CG-CD2	5.05	1.44	1.35

All (67) bond angle outliers are listed below:

Mol	Chain	Res	Type	Atoms	Z	Observed(°)	Ideal(°)
1	A	64[A]	GLU	CG-CD-OE2	-24.90	68.50	118.30
1	A	64[B]	GLU	CG-CD-OE2	-24.90	68.50	118.30
1	A	33[A]	LYS	CD-CE-NZ	24.23	167.43	111.70
1	A	33[B]	LYS	CD-CE-NZ	24.23	167.43	111.70
1	A	64[A]	GLU	CG-CD-OE1	24.00	166.30	118.30
1	A	64[B]	GLU	CG-CD-OE1	24.00	166.30	118.30
1	A	208	ARG	NE-CZ-NH1	-14.94	112.83	120.30
1	A	64[A]	GLU	CB-CG-CD	-13.22	78.50	114.20
1	A	64[B]	GLU	CB-CG-CD	-13.22	78.50	114.20
1	A	194[A]	GLU	CG-CD-OE2	12.52	143.33	118.30
1	A	194[B]	GLU	CG-CD-OE2	12.52	143.33	118.30
1	A	35	ARG	NE-CZ-NH1	11.36	125.98	120.30
1	A	194[A]	GLU	CG-CD-OE1	-10.52	97.25	118.30
1	A	194[B]	GLU	CG-CD-OE1	-10.52	97.25	118.30
1	A	122	ASP	CB-CG-OD1	10.17	127.45	118.30
1	A	352	ARG	NE-CZ-NH1	-9.89	115.35	120.30
1	A	32	ARG	CB-CG-CD	-9.85	86.00	111.60
1	A	59	ARG	NE-CZ-NH1	-9.68	115.46	120.30
1	A	184	ARG	NE-CZ-NH2	-9.52	115.54	120.30
1	A	183	ASP	CB-CG-OD1	9.48	126.83	118.30
1	A	282	ASP	CB-CG-OD1	-8.93	110.27	118.30
1	A	370	ASP	CB-CG-OD2	-8.70	110.47	118.30
1	A	291	ASP	CB-CG-OD1	8.07	125.57	118.30
1	A	56	GLU	OE1-CD-OE2	8.07	132.98	123.30
1	A	139	ASP	CB-CG-OD2	-8.06	111.05	118.30
1	A	286	ARG	NE-CZ-NH1	7.98	124.29	120.30

Continued on next page...

*Continued from previous page...*

Mol	Chain	Res	Type	Atoms	Z	Observed(°)	Ideal(°)
1	A	134[A]	ARG	NE-CZ-NH2	7.97	124.29	120.30
1	A	134[B]	ARG	NE-CZ-NH2	7.97	124.29	120.30
1	A	20	ASP	CB-CG-OD2	7.88	125.39	118.30
1	A	33[A]	LYS	CG-CD-CE	-7.88	88.26	111.90
1	A	33[B]	LYS	CG-CD-CE	-7.88	88.26	111.90
1	A	183	ASP	CB-CG-OD2	-7.74	111.34	118.30
1	A	194[A]	GLU	CB-CG-CD	-7.72	93.37	114.20
1	A	194[B]	GLU	CB-CG-CD	-7.72	93.37	114.20
1	A	362[A]	LEU	CB-CA-C	7.13	123.75	110.20
1	A	362[B]	LEU	CB-CA-C	7.13	123.75	110.20
1	A	12[A]	SER	N-CA-CB	7.09	121.14	110.50
1	A	12[B]	SER	N-CA-CB	7.09	121.14	110.50
1	A	173	ASP	CB-CG-OD1	-6.57	112.39	118.30
1	A	212	ASP	CB-CG-OD1	6.43	124.09	118.30
1	A	115	ASP	CB-CG-OD2	-6.43	112.51	118.30
1	A	137	PHE	CB-CG-CD2	-6.42	116.31	120.80
1	A	216[A]	SER	N-CA-CB	6.38	120.07	110.50
1	A	216[B]	SER	N-CA-CB	6.38	120.07	110.50
1	A	113	LEU	CA-CB-CG	6.34	129.88	115.30
1	A	139	ASP	CB-CG-OD1	6.32	123.98	118.30
1	A	20	ASP	CB-CG-OD1	-6.00	112.90	118.30
1	A	132	ASP	CB-CG-OD1	5.98	123.68	118.30
1	A	14	ARG	NE-CZ-NH2	5.88	123.24	120.30
1	A	291	ASP	CB-CG-OD2	-5.71	113.16	118.30
1	A	329	ARG	NE-CZ-NH2	5.71	123.15	120.30
1	A	210	ARG	NE-CZ-NH1	-5.64	117.48	120.30
1	A	376	ASP	CB-CG-OD1	5.59	123.33	118.30
1	A	72	ARG	NE-CZ-NH1	-5.55	117.52	120.30
1	A	396	TRP	CD1-NE1-CE2	5.55	113.99	109.00
1	A	56	GLU	CG-CD-OE2	-5.54	107.22	118.30
1	A	122	ASP	CB-CG-OD2	-5.39	113.45	118.30
1	A	59	ARG	NE-CZ-NH2	5.39	122.99	120.30
1	A	58	ARG	NE-CZ-NH2	5.38	122.99	120.30
1	A	387	ARG	NE-CZ-NH1	5.31	122.95	120.30
1	A	370	ASP	CB-CG-OD1	5.30	123.08	118.30
1	A	210	ARG	NE-CZ-NH2	5.23	122.91	120.30
1	A	252	ARG	NE-CZ-NH1	-5.20	117.70	120.30
1	A	81	GLU	CG-CD-OE2	-5.15	108.00	118.30
1	A	303	GLU	OE1-CD-OE2	-5.05	117.24	123.30
1	A	217[A]	HIS	CB-CA-C	5.04	120.48	110.40
1	A	217[B]	HIS	CB-CA-C	5.04	120.48	110.40

There are no chirality outliers.

All (1) planarity outliers are listed below:

Mol	Chain	Res	Type	Group
1	A	72	ARG	Sidechain

## 5.2 Too-close contacts [i](#)

In the following table, the Non-H and H(model) columns list the number of non-hydrogen atoms and hydrogen atoms in the chain respectively. The H(added) column lists the number of hydrogen atoms added and optimized by MolProbity. The Clashes column lists the number of clashes within the asymmetric unit, whereas Symm-Clashes lists symmetry-related clashes.

Mol	Chain	Non-H	H(model)	H(added)	Clashes	Symm-Clashes
1	A	3089	0	3110	58	0
2	A	86	0	60	3	0
3	A	20	0	0	1	0
4	A	16	0	24	15	0
5	A	32	0	18	19	0
6	A	830	0	0	50	5
All	All	4073	0	3212	84	5

The all-atom clashscore is defined as the number of clashes found per 1000 atoms (including hydrogen atoms). The all-atom clashscore for this structure is 13.

All (84) close contacts within the same asymmetric unit are listed below, sorted by their clash magnitude.

Atom-1	Atom-2	Interatomic distance (Å)	Clash overlap (Å)
5:A:410:TQU:CAF	6:A:1072:HOH:O	1.64	1.30
5:A:410:TQU:H7	6:A:1075:HOH:O	1.29	1.28
1:A:251[A]:GLN:NE2	1:A:375:ILE:HD13	1.48	1.28
1:A:388:ILE:HG22	6:A:832:HOH:O	1.35	1.23
5:A:410:TQU:H8	6:A:1127:HOH:O	1.37	1.18
5:A:410:TQU:H4	6:A:616:HOH:O	1.39	1.17
1:A:162:ARG:HG3	6:A:912:HOH:O	1.41	1.16
1:A:251[A]:GLN:NE2	1:A:375:ILE:CD1	2.15	1.09
1:A:20:ASP:H	4:A:405:DMS:H11	1.13	1.04
1:A:251[B]:GLN:OE1	6:A:1067:HOH:O	1.74	1.03
1:A:111:GLN:NE2	1:A:114[B]:ARG:HH21	1.60	1.00
1:A:251[A]:GLN:HE22	1:A:375:ILE:HD13	1.27	0.94
1:A:184:ARG:CZ	6:A:1088:HOH:O	2.16	0.93
5:A:410:TQU:H5	6:A:603:HOH:O	1.67	0.93
5:A:410:TQU:CAN	6:A:1072:HOH:O	1.97	0.90

*Continued on next page...*

*Continued from previous page...*

Atom-1	Atom-2	Interatomic distance (Å)	Clash overlap (Å)
1:A:162:ARG:HH12	4:A:406:DMS:H22	1.37	0.89
1:A:123:ASN:ND2	6:A:1167[B]:HOH:O	1.81	0.87
1:A:244:THR:HG23	6:A:832:HOH:O	1.77	0.84
5:A:410:TQU:CAF	6:A:603:HOH:O	2.23	0.83
1:A:20:ASP:N	4:A:405:DMS:H11	1.95	0.81
3:A:402[A]:SO4:O3	6:A:903:HOH:O	1.99	0.81
1:A:80[A]:PRO:HG3	6:A:1007:HOH:O	1.81	0.79
1:A:194[B]:GLU:OE2	6:A:810:HOH:O	2.00	0.79
1:A:162:ARG:HH12	4:A:406:DMS:C2	1.95	0.79
1:A:148:LYS:HE2	6:A:870:HOH:O	1.83	0.78
1:A:111:GLN:HE22	1:A:114[B]:ARG:HH21	1.32	0.77
1:A:251[A]:GLN:HE21	1:A:375:ILE:HD13	1.42	0.77
5:A:410:TQU:H5	6:A:1072:HOH:O	1.47	0.77
1:A:221:GLU:OE2	6:A:896:HOH:O	2.04	0.76
5:A:410:TQU:CAD	6:A:603:HOH:O	2.33	0.75
5:A:410:TQU:H4	6:A:603:HOH:O	1.90	0.71
5:A:409:TQU:H1	5:A:409:TQU:NAK	2.05	0.71
5:A:410:TQU:CAD	6:A:616:HOH:O	2.10	0.69
1:A:12[B]:SER:HB3	6:A:1189:HOH:O	1.94	0.68
5:A:410:TQU:NAJ	6:A:1072:HOH:O	2.19	0.68
4:A:407:DMS:C2	6:A:1097:HOH:O	2.42	0.67
1:A:159:LYS:CD	6:A:1037:HOH:O	2.43	0.67
4:A:405:DMS:H22	6:A:1229[B]:HOH:O	1.94	0.67
1:A:20:ASP:H	4:A:405:DMS:C1	2.00	0.66
1:A:127[B]:GLU:CG	6:A:1018:HOH:O	2.43	0.65
1:A:162:ARG:HH22	4:A:406:DMS:C1	2.09	0.65
1:A:162:ARG:NH1	6:A:912:HOH:O	2.30	0.65
1:A:326:GLU:OE2	6:A:918:HOH:O	2.14	0.64
1:A:29:GLU:HG2	1:A:32:ARG:HB3	1.80	0.64
1:A:162:ARG:HH22	4:A:406:DMS:H11	1.62	0.64
4:A:407:DMS:H21	6:A:1097:HOH:O	1.97	0.63
5:A:410:TQU:NAK	5:A:410:TQU:H1	2.15	0.61
1:A:261:GLU:CG	6:A:1091:HOH:O	2.47	0.61
1:A:251[A]:GLN:HE21	1:A:375:ILE:CD1	2.03	0.60
1:A:194[B]:GLU:CD	6:A:810:HOH:O	2.41	0.58
1:A:317:GLU:CG	6:A:1050:HOH:O	2.50	0.58
1:A:74:ASN:C	1:A:74:ASN:HD22	2.07	0.57
1:A:144:ALA:HA	1:A:154:GLN:HE22	1.71	0.56
2:A:401[B]:HEM:CBB	2:A:401[B]:HEM:HHC	2.36	0.54
4:A:405:DMS:C2	6:A:1229[B]:HOH:O	2.54	0.54
1:A:64[B]:GLU:OE2	6:A:661:HOH:O	2.18	0.53

*Continued on next page...*

Continued from previous page...

Atom-1	Atom-2	Interatomic distance (Å)	Clash overlap (Å)
1:A:127[A]:GLU:CG	6:A:1018:HOH:O	2.56	0.53
4:A:407:DMS:H23	6:A:1097:HOH:O	2.08	0.52
1:A:95:ARG:NE	6:A:1191:HOH:O	2.43	0.51
1:A:80[A]:PRO:CG	6:A:1007:HOH:O	2.50	0.50
1:A:167:ALA:HB1	5:A:410:TQU:CAH	2.41	0.50
1:A:64[A]:GLU:CG	6:A:661:HOH:O	2.59	0.49
1:A:184:ARG:NH2	6:A:1088:HOH:O	2.39	0.49
5:A:410:TQU:CAC	6:A:1075:HOH:O	2.14	0.49
5:A:410:TQU:NAK	5:A:410:TQU:CAH	2.74	0.48
1:A:331:ASN:H	1:A:331:ASN:HD22	1.60	0.48
1:A:127[A]:GLU:CB	6:A:1018:HOH:O	2.61	0.48
1:A:127[A]:GLU:HB2	6:A:1018:HOH:O	2.15	0.47
1:A:316:PRO:HB3	4:A:407:DMS:H11	1.96	0.47
1:A:127[B]:GLU:CB	6:A:1018:HOH:O	2.63	0.47
1:A:246:LEU:HD22	1:A:362[B]:LEU:CD2	2.46	0.46
2:A:401[B]:HEM:HHC	2:A:401[B]:HEM:HBB2	1.97	0.45
1:A:388:ILE:CG2	6:A:832:HOH:O	2.20	0.44
1:A:86[B]:MET:HG3	6:A:1252:HOH:O	2.18	0.43
1:A:167:ALA:HB1	5:A:410:TQU:CAL	2.48	0.43
1:A:33[B]:LYS:HB2	1:A:33[B]:LYS:HE3	1.83	0.42
1:A:162:ARG:NH1	4:A:406:DMS:C2	2.73	0.42
5:A:409:TQU:NAK	5:A:409:TQU:CAH	2.67	0.42
2:A:401[B]:HEM:CBB	2:A:401[B]:HEM:CHC	2.97	0.42
1:A:246:LEU:HD22	1:A:362[B]:LEU:HD22	2.01	0.41
1:A:326:GLU:HG2	6:A:918:HOH:O	2.21	0.41
1:A:321:ASN:HA	4:A:407:DMS:C2	2.51	0.41
1:A:184:ARG:NE	6:A:1088:HOH:O	2.41	0.41
1:A:331:ASN:HD22	1:A:331:ASN:N	2.17	0.40

All (5) symmetry-related close contacts are listed below. The label for Atom-2 includes the symmetry operator and encoded unit-cell translations to be applied.

Atom-1	Atom-2	Interatomic distance (Å)	Clash overlap (Å)
6:A:703:HOH:O	6:A:1272:HOH:O[10_555]	1.72	0.48
6:A:879:HOH:O	6:A:1119:HOH:O[6_554]	1.84	0.36
6:A:838:HOH:O	6:A:1266:HOH:O[5_555]	2.04	0.16
6:A:838:HOH:O	6:A:1064:HOH:O[10_555]	2.13	0.07
6:A:738:HOH:O	6:A:1102:HOH:O[10_555]	2.19	0.01

## 5.3 Torsion angles [i](#)

### 5.3.1 Protein backbone [i](#)

In the following table, the Percentiles column shows the percent Ramachandran outliers of the chain as a percentile score with respect to all X-ray entries followed by that with respect to entries of similar resolution.

The Analysed column shows the number of residues for which the backbone conformation was analysed, and the total number of residues.

Mol	Chain	Analysed	Favoured	Allowed	Outliers	Percentiles	
1	A	419/395 (106%)	414 (99%)	5 (1%)	0	100	100

There are no Ramachandran outliers to report.

### 5.3.2 Protein sidechains [i](#)

In the following table, the Percentiles column shows the percent sidechain outliers of the chain as a percentile score with respect to all X-ray entries followed by that with respect to entries of similar resolution.

The Analysed column shows the number of residues for which the sidechain conformation was analysed, and the total number of residues.

Mol	Chain	Analysed	Rotameric	Outliers	Percentiles	
1	A	330/325 (102%)	324 (98%)	6 (2%)	59	24

All (6) residues with a non-rotameric sidechain are listed below:

Mol	Chain	Res	Type
1	A	32	ARG
1	A	33[A]	LYS
1	A	33[B]	LYS
1	A	74	ASN
1	A	277	ASN
1	A	331	ASN

Sometimes sidechains can be flipped to improve hydrogen bonding and reduce clashes. All (7) such sidechains are listed below:

Mol	Chain	Res	Type
1	A	74	ASN
1	A	111	GLN

*Continued on next page...*

Continued from previous page...

Mol	Chain	Res	Type
1	A	154	GLN
1	A	331	ASN
1	A	342	GLN
1	A	356	GLN
1	A	385	GLN

### 5.3.3 RNA [i](#)

There are no RNA molecules in this entry.

### 5.4 Non-standard residues in protein, DNA, RNA chains [i](#)

There are no non-standard protein/DNA/RNA residues in this entry.

### 5.5 Carbohydrates [i](#)

There are no monosaccharides in this entry.

### 5.6 Ligand geometry [i](#)

12 ligands are modelled in this entry.

In the following table, the Counts columns list the number of bonds (or angles) for which Mogul statistics could be retrieved, the number of bonds (or angles) that are observed in the model and the number of bonds (or angles) that are defined in the Chemical Component Dictionary. The Link column lists molecule types, if any, to which the group is linked. The Z score for a bond length (or angle) is the number of standard deviations the observed value is removed from the expected value. A bond length (or angle) with  $|Z| > 2$  is considered an outlier worth inspection. RMSZ is the root-mean-square of all Z scores of the bond lengths (or angles).

Mol	Type	Chain	Res	Link	Bond lengths			Bond angles		
					Counts	RMSZ	$\# Z  > 2$	Counts	RMSZ	$\# Z  > 2$
4	DMS	A	406	-	3,3,3	0.39	0	3,3,3	2.20	1 (33%)
2	HEM	A	401[A]	5,1	42,50,50	1.70	11 (26%)	46,82,82	2.00	12 (26%)
4	DMS	A	407	-	3,3,3	0.58	0	3,3,3	1.29	1 (33%)
5	TQU	A	410	-	14,18,18	2.40	3 (21%)	18,25,25	2.64	8 (44%)
4	DMS	A	408	-	3,3,3	0.31	0	3,3,3	1.36	0
4	DMS	A	405	-	3,3,3	0.72	0	3,3,3	1.85	1 (33%)
3	SO4	A	402[A]	-	4,4,4	0.99	0	6,6,6	1.06	1 (16%)



Mol	Type	Chain	Res	Link	Bond lengths			Bond angles		
					Counts	RMSZ	# Z  > 2	Counts	RMSZ	# Z  > 2
2	HEM	A	401[B]	5,1	42,50,50	2.04	14 (33%)	46,82,82	2.07	13 (28%)
3	SO4	A	403	-	4,4,4	1.52	1 (25%)	6,6,6	0.74	0
3	SO4	A	404	-	4,4,4	0.79	0	6,6,6	0.31	0
5	TQU	A	409	2	14,18,18	2.40	3 (21%)	18,25,25	2.63	8 (44%)
3	SO4	A	402[B]	-	4,4,4	0.81	0	6,6,6	1.78	1 (16%)

In the following table, the Chirals column lists the number of chiral outliers, the number of chiral centers analysed, the number of these observed in the model and the number defined in the Chemical Component Dictionary. Similar counts are reported in the Torsion and Rings columns. '-' means no outliers of that kind were identified.

Mol	Type	Chain	Res	Link	Chirals	Torsions	Rings
2	HEM	A	401[A]	5,1	-	0/12/54/54	-
2	HEM	A	401[B]	5,1	-	0/12/54/54	-
5	TQU	A	409	2	-	2/4/4/4	0/3/3/3
5	TQU	A	410	-	-	3/4/4/4	0/3/3/3

All (32) bond length outliers are listed below:

Mol	Chain	Res	Type	Atoms	Z	Observed(Å)	Ideal(Å)
5	A	410	TQU	NAK-NAP	-6.13	1.23	1.38
5	A	409	TQU	NAK-NAP	-6.09	1.23	1.38
2	A	401[B]	HEM	C4D-ND	-5.06	1.31	1.40
5	A	409	TQU	CAM-NAP	-4.87	1.33	1.43
5	A	410	TQU	CAM-NAP	-4.84	1.33	1.43
2	A	401[B]	HEM	C1A-NA	4.30	1.45	1.36
2	A	401[A]	HEM	C4D-ND	-4.14	1.33	1.40
2	A	401[B]	HEM	C3C-C2C	4.00	1.45	1.40
2	A	401[A]	HEM	C1B-NB	-3.75	1.33	1.40
2	A	401[A]	HEM	C1A-NA	3.43	1.43	1.36
2	A	401[B]	HEM	CHB-C1B	3.39	1.42	1.34
2	A	401[B]	HEM	C4B-NB	-3.37	1.32	1.38
2	A	401[B]	HEM	CHA-C4D	3.23	1.42	1.34
2	A	401[B]	HEM	C3D-C2D	3.19	1.43	1.36
2	A	401[A]	HEM	C4A-NA	3.15	1.42	1.36
2	A	401[B]	HEM	C1B-NB	-3.11	1.34	1.40
2	A	401[B]	HEM	C4A-NA	2.81	1.42	1.36
2	A	401[A]	HEM	CMA-C3A	-2.74	1.46	1.51
2	A	401[A]	HEM	CHA-C4D	2.50	1.40	1.34
2	A	401[A]	HEM	C1B-C2B	-2.44	1.39	1.44
2	A	401[B]	HEM	C3C-C4C	2.39	1.44	1.41

Continued on next page...

*Continued from previous page...*

Mol	Chain	Res	Type	Atoms	Z	Observed(Å)	Ideal(Å)
2	A	401[A]	HEM	CHB-C1B	2.38	1.40	1.34
2	A	401[B]	HEM	O1D-CGD	2.36	1.29	1.22
5	A	409	TQU	CAM-CAO	-2.33	1.39	1.43
5	A	410	TQU	CAM-CAO	-2.29	1.39	1.43
2	A	401[B]	HEM	C1D-ND	-2.16	1.34	1.38
2	A	401[A]	HEM	C2C-C1C	2.07	1.47	1.42
2	A	401[A]	HEM	CMB-C2B	-2.06	1.46	1.50
2	A	401[B]	HEM	C3B-C2B	2.05	1.41	1.37
2	A	401[B]	HEM	C2C-C1C	2.03	1.47	1.42
2	A	401[A]	HEM	C3C-CAC	2.02	1.52	1.47
3	A	403	SO4	O4-S	-2.01	1.31	1.48

All (46) bond angle outliers are listed below:

Mol	Chain	Res	Type	Atoms	Z	Observed(°)	Ideal(°)
5	A	410	TQU	CAE-NAK-NAP	7.62	108.89	102.85
5	A	409	TQU	CAE-NAK-NAP	7.57	108.85	102.85
2	A	401[B]	HEM	C3B-C4B-NB	5.08	113.12	109.47
2	A	401[A]	HEM	O1D-CGD-CBD	-4.84	107.73	123.09
2	A	401[A]	HEM	C4C-CHD-C1D	4.73	128.79	122.56
2	A	401[A]	HEM	CHC-C4B-NB	4.65	129.43	124.44
5	A	409	TQU	CAM-CAO-CAN	4.42	119.32	115.98
2	A	401[B]	HEM	C3B-C2B-C1B	-4.42	103.09	106.41
5	A	410	TQU	CAM-CAO-CAN	4.36	119.28	115.98
2	A	401[A]	HEM	C4B-C3B-C2B	-4.29	103.34	107.28
2	A	401[B]	HEM	C1D-C2D-C3D	-3.94	102.83	106.98
3	A	402[B]	SO4	O3-S-O2	3.85	129.69	109.56
2	A	401[B]	HEM	C2B-C1B-NB	3.85	114.26	109.84
2	A	401[A]	HEM	CHC-C4B-C3B	-3.75	118.83	124.57
2	A	401[B]	HEM	CHC-C4B-C3B	-3.63	119.00	124.57
2	A	401[B]	HEM	C4C-CHD-C1D	3.56	127.26	122.56
5	A	410	TQU	CAM-NAP-NAK	3.54	121.87	118.79
5	A	409	TQU	CAM-NAP-NAK	3.48	121.81	118.79
2	A	401[A]	HEM	C1D-C2D-C3D	-3.37	103.44	106.98
4	A	406	DMS	C2-S-C1	3.34	115.52	98.42
2	A	401[A]	HEM	O2D-CGD-CBD	3.24	124.23	114.00
2	A	401[B]	HEM	CHC-C4B-NB	3.19	127.87	124.44
2	A	401[A]	HEM	C3B-C4B-NB	3.15	111.73	109.47
5	A	409	TQU	CAB-NAJ-CAN	2.99	121.45	116.93
5	A	410	TQU	CAB-NAJ-CAN	2.98	121.44	116.93
2	A	401[A]	HEM	C4B-CHC-C1C	-2.98	118.63	122.56
2	A	401[B]	HEM	C3D-C4D-ND	2.94	113.39	110.17

*Continued on next page...*

Continued from previous page...

Mol	Chain	Res	Type	Atoms	Z	Observed(°)	Ideal(°)
2	A	401[B]	HEM	CHB-C1B-C2B	-2.90	118.74	126.94
2	A	401[A]	HEM	C2D-C1D-ND	2.73	113.06	109.90
2	A	401[B]	HEM	CMC-C2C-C3C	2.72	130.12	124.68
2	A	401[B]	HEM	C2D-C1D-ND	2.72	113.04	109.90
2	A	401[A]	HEM	C2B-C1B-NB	2.67	112.91	109.84
2	A	401[B]	HEM	C4B-C3B-C2B	-2.53	104.95	107.28
5	A	409	TQU	CAC-CAB-NAJ	-2.52	120.86	124.60
5	A	410	TQU	CAC-CAB-NAJ	-2.51	120.86	124.60
5	A	409	TQU	CAO-CAN-NAJ	-2.35	120.33	122.82
5	A	410	TQU	CAG-NAI-CAE	2.34	106.31	102.62
5	A	409	TQU	CAG-NAI-CAE	2.32	106.28	102.62
3	A	402[A]	SO4	O4-S-O3	-2.30	95.83	108.54
4	A	405	DMS	O-S-C1	2.30	117.99	106.49
5	A	410	TQU	CAO-CAN-NAJ	-2.29	120.39	122.82
4	A	407	DMS	C2-S-C1	2.24	109.89	98.42
5	A	410	TQU	CAH-CAO-CAM	-2.21	120.41	124.66
5	A	409	TQU	CAH-CAO-CAM	-2.20	120.43	124.66
2	A	401[B]	HEM	CHB-C1B-NB	2.12	127.00	124.37
2	A	401[A]	HEM	CHB-C1B-C2B	-2.01	121.26	126.94

There are no chirality outliers.

All (5) torsion outliers are listed below:

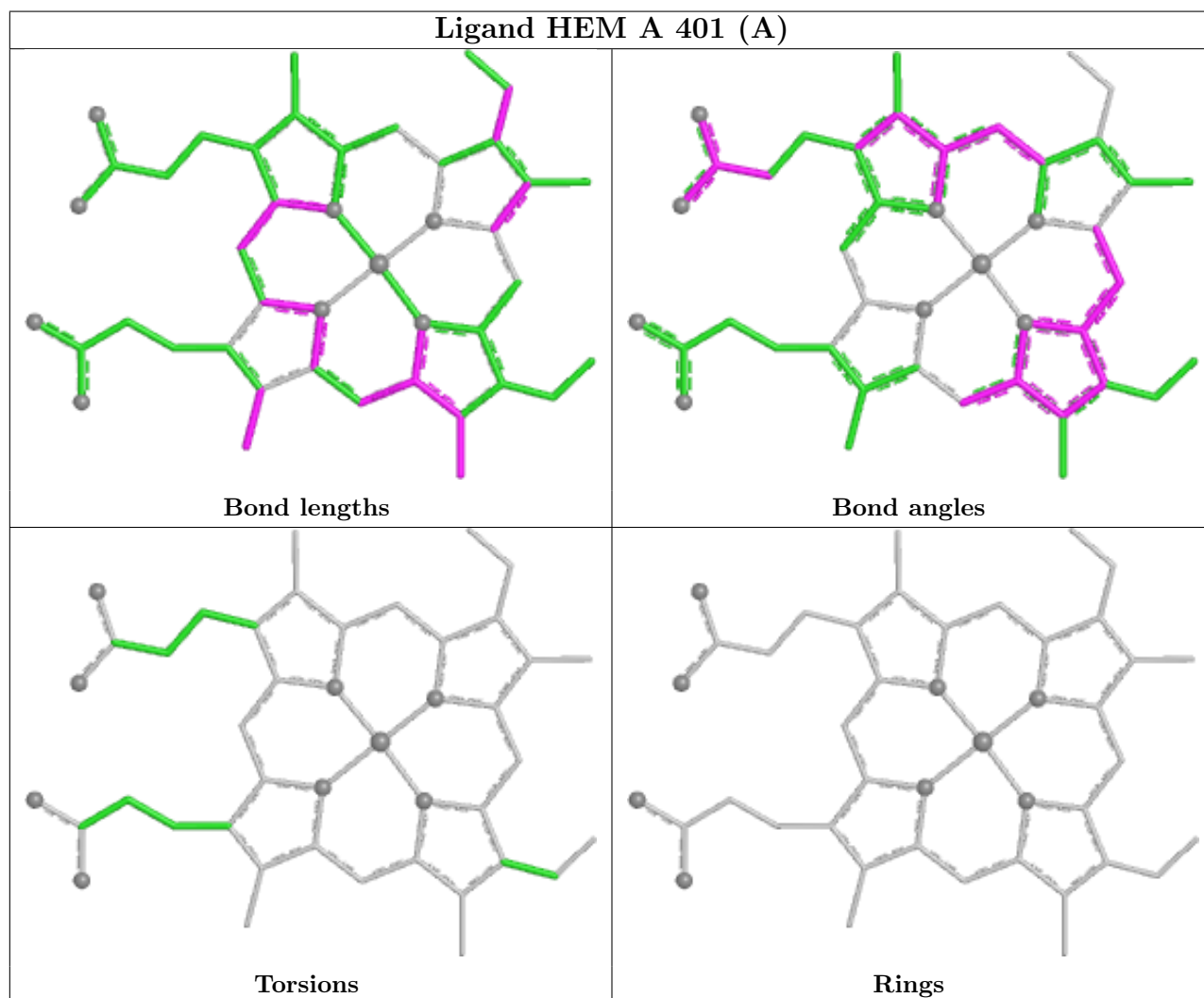
Mol	Chain	Res	Type	Atoms
5	A	409	TQU	CAO-CAM-NAP-CAG
5	A	410	TQU	CAO-CAM-NAP-CAG
5	A	410	TQU	CAC-CAM-NAP-NAK
5	A	409	TQU	CAC-CAM-NAP-NAK
5	A	410	TQU	CAC-CAM-NAP-CAG

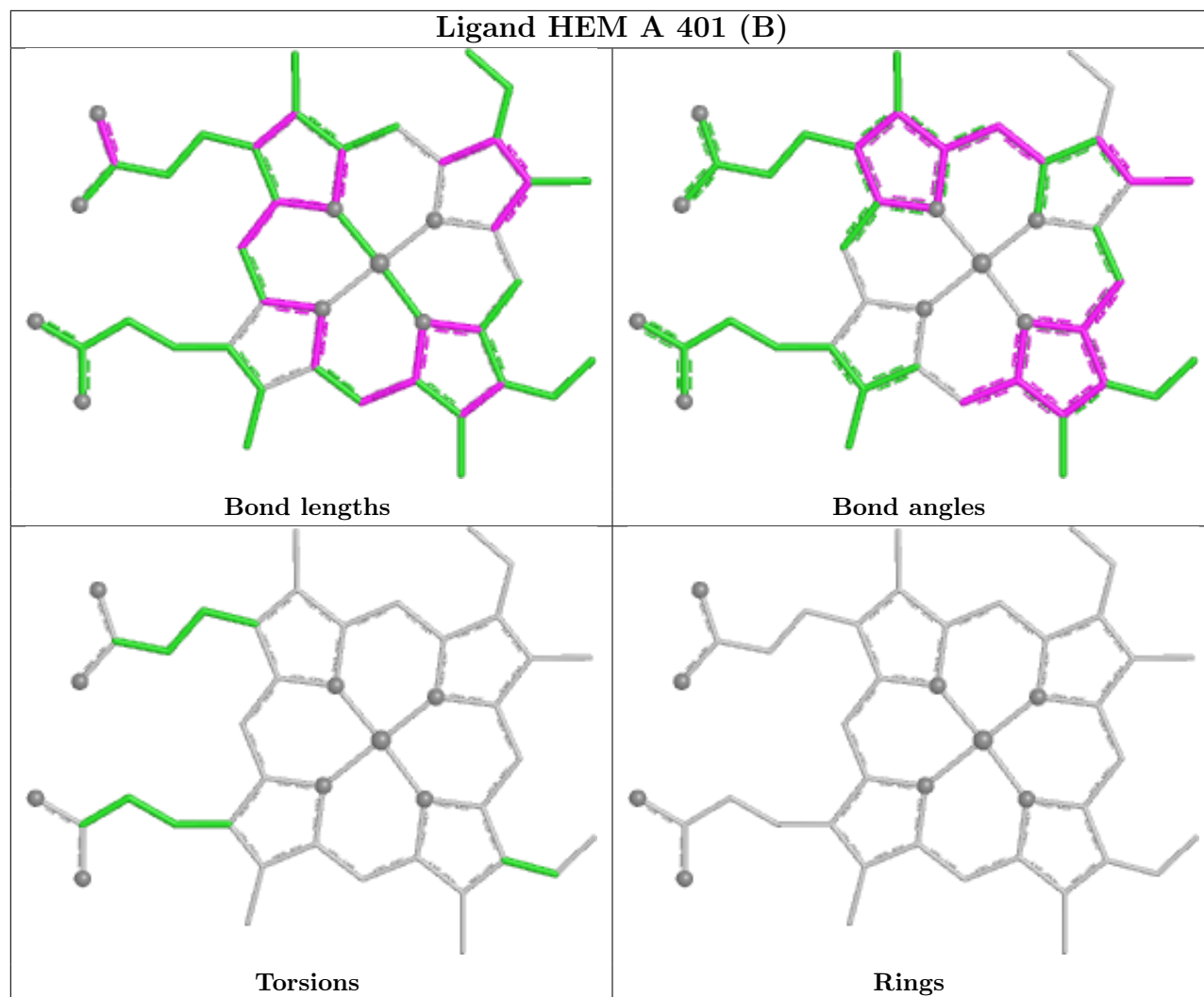
There are no ring outliers.

7 monomers are involved in 38 short contacts:

Mol	Chain	Res	Type	Clashes	Symm-Clashes
4	A	406	DMS	5	0
4	A	407	DMS	5	0
5	A	410	TQU	17	0
4	A	405	DMS	5	0
3	A	402[A]	SO4	1	0
2	A	401[B]	HEM	3	0
5	A	409	TQU	2	0

The following is a two-dimensional graphical depiction of Mogul quality analysis of bond lengths, bond angles, torsion angles, and ring geometry for all instances of the Ligand of Interest. In addition, ligands with molecular weight > 250 and outliers as shown on the validation Tables will also be included. For torsion angles, if less than 5% of the Mogul distribution of torsion angles is within 10 degrees of the torsion angle in question, then that torsion angle is considered an outlier. Any bond that is central to one or more torsion angles identified as an outlier by Mogul will be highlighted in the graph. For rings, the root-mean-square deviation (RMSD) between the ring in question and similar rings identified by Mogul is calculated over all ring torsion angles. If the average RMSD is greater than 60 degrees and the minimal RMSD between the ring in question and any Mogul-identified rings is also greater than 60 degrees, then that ring is considered an outlier. The outliers are highlighted in purple. The color gray indicates Mogul did not find sufficient equivalents in the CSD to analyse the geometry.





## 5.7 Other polymers [i](#)

There are no such residues in this entry.

## 5.8 Polymer linkage issues [i](#)

There are no chain breaks in this entry.

## 6 Fit of model and data [i](#)

### 6.1 Protein, DNA and RNA chains [i](#)

In the following table, the column labelled '#RSRZ > 2' contains the number (and percentage) of RSRZ outliers, followed by percent RSRZ outliers for the chain as percentile scores relative to all X-ray entries and entries of similar resolution. The OWAB column contains the minimum, median, 95<sup>th</sup> percentile and maximum values of the occupancy-weighted average B-factor per residue. The column labelled 'Q < 0.9' lists the number of (and percentage) of residues with an average occupancy less than 0.9.

Mol	Chain	Analysed	<RSRZ>	#RSRZ>2	OWAB(Å <sup>2</sup> )	Q<0.9
1	A	395/395 (100%)	-0.18	6 (1%) 73 75	6, 10, 21, 48	4 (1%)

All (6) RSRZ outliers are listed below:

Mol	Chain	Res	Type	RSRZ
1	A	2	THR	5.2
1	A	4	THR	4.8
1	A	3	ALA	4.5
1	A	107	PRO	3.5
1	A	263	PRO	2.3
1	A	5	VAL	2.1

### 6.2 Non-standard residues in protein, DNA, RNA chains [i](#)

There are no non-standard protein/DNA/RNA residues in this entry.

### 6.3 Carbohydrates [i](#)

There are no monosaccharides in this entry.

### 6.4 Ligands [i](#)

In the following table, the Atoms column lists the number of modelled atoms in the group and the number defined in the chemical component dictionary. The B-factors column lists the minimum, median, 95<sup>th</sup> percentile and maximum values of B factors of atoms in the group. The column labelled 'Q < 0.9' lists the number of atoms with occupancy less than 0.9.

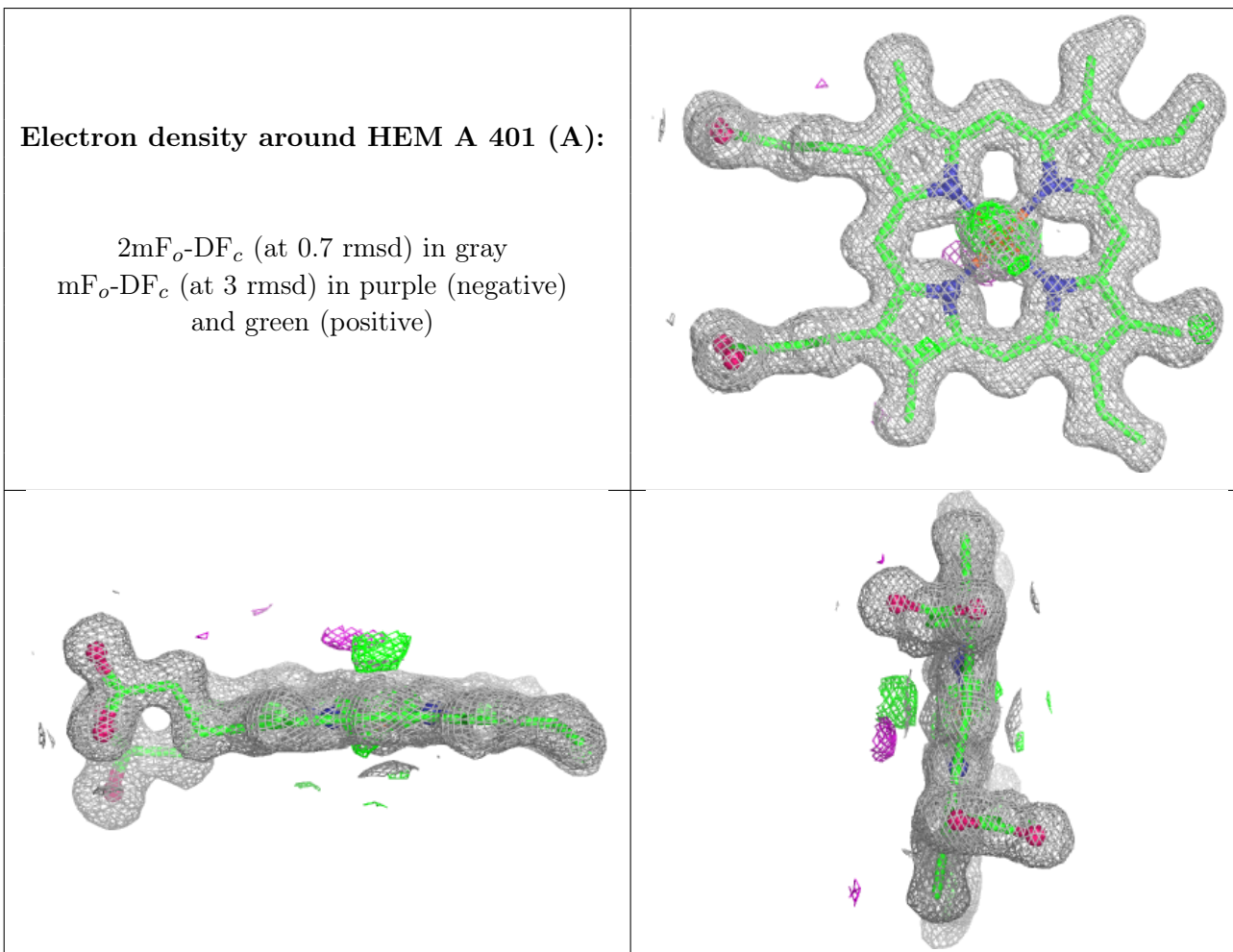
Mol	Type	Chain	Res	Atoms	RSCC	RSR	B-factors(Å <sup>2</sup> )	Q<0.9
4	DMS	A	407	4/4	0.65	0.23	28,45,57,67	0

*Continued on next page...*

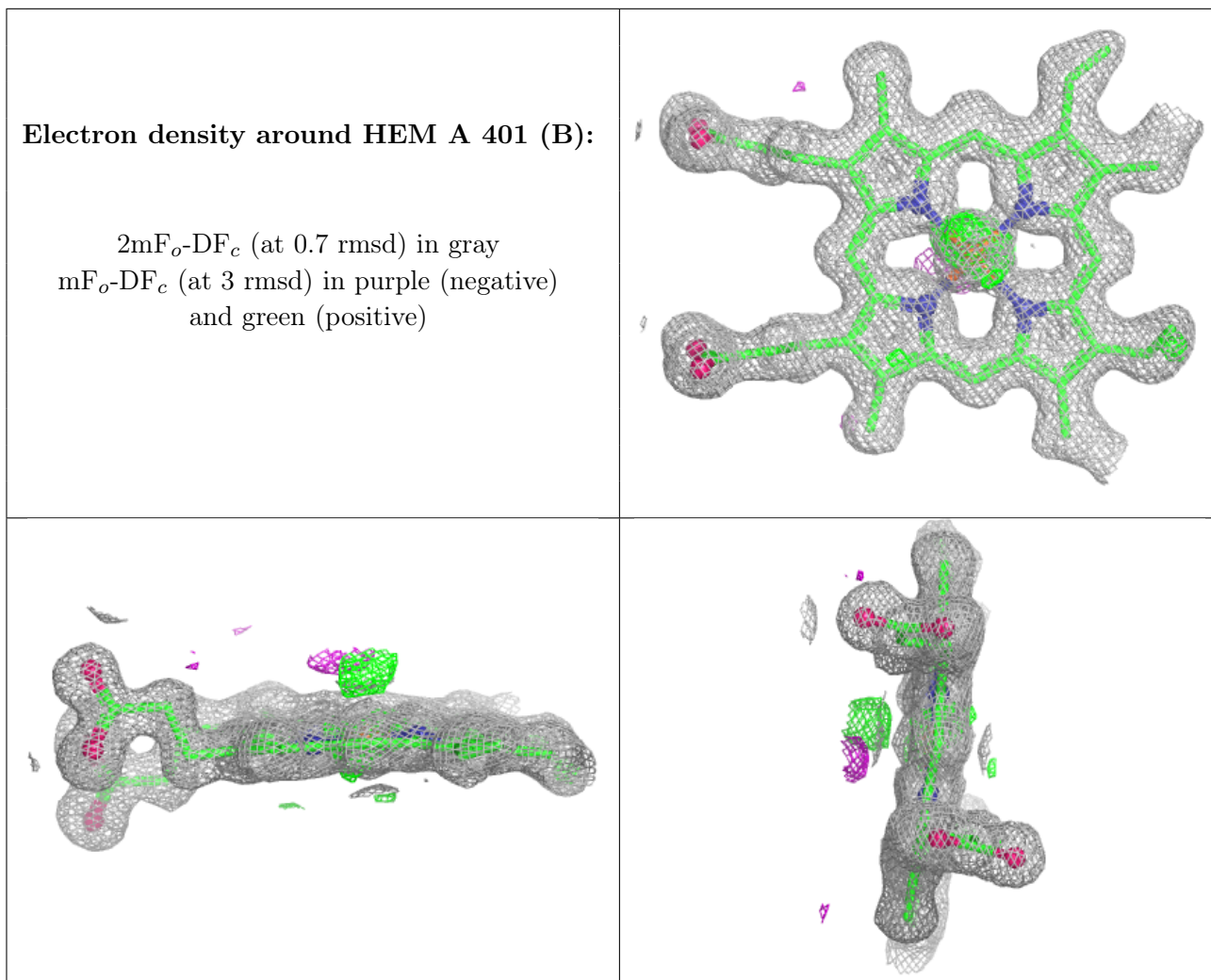
Continued from previous page...

Mol	Type	Chain	Res	Atoms	RSCC	RSR	B-factors(Å <sup>2</sup> )	Q<0.9
5	TQU	A	410	16/16	0.65	0.34	9,10,13,16	16
4	DMS	A	405	4/4	0.77	0.20	33,41,42,50	0
5	TQU	A	409	16/16	0.87	0.13	7,10,13,14	0
4	DMS	A	406	4/4	0.88	0.13	37,39,42,53	0
4	DMS	A	408	4/4	0.90	0.18	48,52,55,55	0
3	SO4	A	404	5/5	0.97	0.13	13,18,26,26	0
3	SO4	A	403	5/5	0.98	0.16	14,16,17,21	0
2	HEM	A	401[A]	43/43	0.99	0.08	6,7,12,15	43
2	HEM	A	401[B]	43/43	0.99	0.08	4,5,5,6	43
3	SO4	A	402[A]	5/5	0.99	0.09	9,10,13,14	5
3	SO4	A	402[B]	5/5	0.99	0.09	11,13,15,15	5

The following is a graphical depiction of the model fit to experimental electron density of all instances of the Ligand of Interest. In addition, ligands with molecular weight > 250 and outliers as shown on the geometry validation Tables will also be included. Each fit is shown from different orientation to approximate a three-dimensional view.







## 6.5 Other polymers [i](#)

There are no such residues in this entry.