



# Full wwPDB X-ray Structure Validation Report ⓘ

Oct 8, 2023 – 07:04 AM EDT

PDB ID : 4QVI  
Title : Crystal structure of mutant ribosomal protein M218L TthL1 in complex with 80nt 23S RNA from *Thermus thermophilus*  
Authors : Gabdulkhakov, A.G.; Nevskaya, N.A.; Nikonov, S.V.  
Deposited on : 2014-07-15  
Resolution : 1.90 Å(reported)

This is a Full wwPDB X-ray Structure Validation Report for a publicly released PDB entry.

We welcome your comments at [validation@mail.wwpdb.org](mailto:validation@mail.wwpdb.org)

A user guide is available at

<https://www.wwpdb.org/validation/2017/XrayValidationReportHelp>

with specific help available everywhere you see the ⓘ symbol.

The types of validation reports are described at

<http://www.wwpdb.org/validation/2017/FAQs#types>.

---

The following versions of software and data (see [references ⓘ](#)) were used in the production of this report:

MolProbity : 4.02b-467  
Mogul : 1.8.5 (274361), CSD as541be (2020)  
Xtriage (Phenix) : 1.13  
EDS : 2.35.1  
Percentile statistics : 20191225.v01 (using entries in the PDB archive December 25th 2019)  
Refmac : 5.8.0158  
CCP4 : 7.0.044 (Gargrove)  
Ideal geometry (proteins) : Engh & Huber (2001)  
Ideal geometry (DNA, RNA) : Parkinson et al. (1996)  
Validation Pipeline (wwPDB-VP) : 2.35.1



## 2 Entry composition [i](#)

There are 7 unique types of molecules in this entry. The entry contains 3895 atoms, of which 0 are hydrogens and 0 are deuteriums.

In the tables below, the ZeroOcc column contains the number of atoms modelled with zero occupancy, the AltConf column contains the number of residues with at least one atom in alternate conformation and the Trace column contains the number of residues modelled with at most 2 atoms.

- Molecule 1 is a protein called 50S ribosomal protein L1.

Mol	Chain	Residues	Atoms					ZeroOcc	AltConf	Trace
			Total	C	N	O	S			
1	A	229	1764	1116	323	322	3	0	2	0

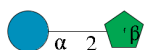
There is a discrepancy between the modelled and reference sequences:

Chain	Residue	Modelled	Actual	Comment	Reference
A	218	LEU	MET	engineered mutation	UNP P27150

- Molecule 2 is a RNA chain called fragment of 23S rRNA.

Mol	Chain	Residues	Atoms					ZeroOcc	AltConf	Trace
			Total	C	N	O	P			
2	B	80	1723	765	318	560	80	0	0	0

- Molecule 3 is an oligosaccharide called beta-D-fructofuranose-(2-1)-alpha-D-glucopyranose.



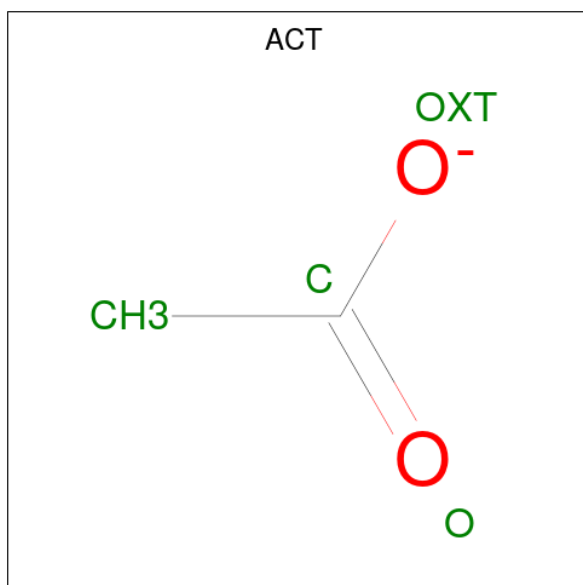
Mol	Chain	Residues	Atoms		ZeroOcc	AltConf	Trace
			Total	O			
3	C	2	23	11	0	0	0

- Molecule 4 is SULFATE ION (three-letter code: SO4) (formula: O<sub>4</sub>S).



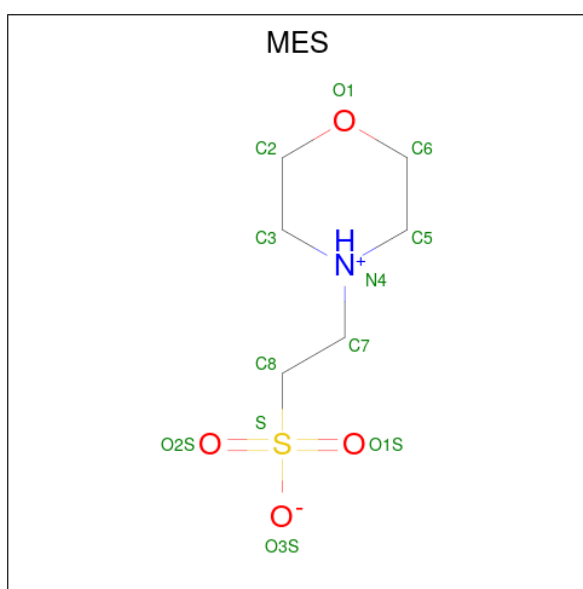
Mol	Chain	Residues	Atoms	ZeroOcc	AltConf
4	A	1	Total O S 5 4 1	0	0
4	A	1	Total O S 5 4 1	0	0
4	B	1	Total O S 5 4 1	0	0
4	B	1	Total O S 5 4 1	0	0

- Molecule 5 is ACETATE ION (three-letter code: ACT) (formula: C<sub>2</sub>H<sub>3</sub>O<sub>2</sub>).



Mol	Chain	Residues	Atoms			ZeroOcc	AltConf
5	A	1	Total	C	O	0	0
			4	2	2		
5	A	1	Total	C	O	0	0
			4	2	2		
5	B	1	Total	C	O	0	0
			4	2	2		
5	B	1	Total	C	O	0	0
			4	2	2		

- Molecule 6 is 2-(N-MORPHOLINO)-ETHANESULFONIC ACID (three-letter code: MES) (formula: C<sub>6</sub>H<sub>13</sub>NO<sub>4</sub>S).



Mol	Chain	Residues	Atoms					ZeroOcc	AltConf
6	B	1	Total	C	N	O	S	0	0
			12	6	1	4	1		

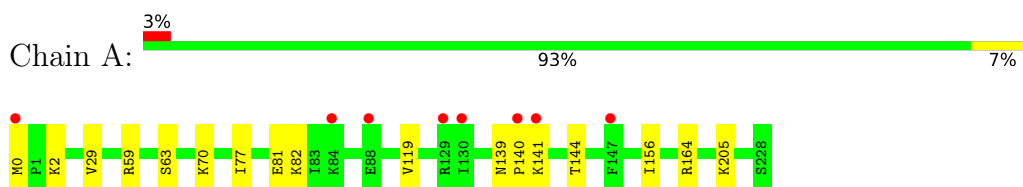
- Molecule 7 is water.

Mol	Chain	Residues	Atoms		ZeroOcc	AltConf
7	A	122	Total	O	0	0
			122	122		
7	B	215	Total	O	0	0
			215	215		

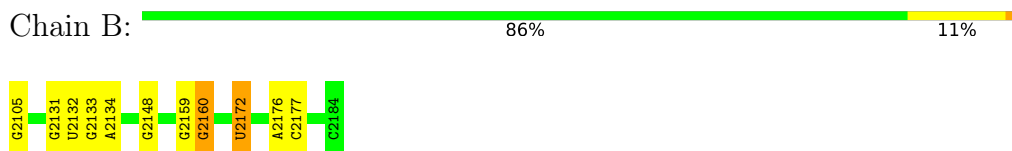
### 3 Residue-property plots [i](#)

These plots are drawn for all protein, RNA, DNA and oligosaccharide chains in the entry. The first graphic for a chain summarises the proportions of the various outlier classes displayed in the second graphic. The second graphic shows the sequence view annotated by issues in geometry and electron density. Residues are color-coded according to the number of geometric quality criteria for which they contain at least one outlier: green = 0, yellow = 1, orange = 2 and red = 3 or more. A red dot above a residue indicates a poor fit to the electron density ( $RSRZ > 2$ ). Stretches of 2 or more consecutive residues without any outlier are shown as a green connector. Residues present in the sample, but not in the model, are shown in grey.

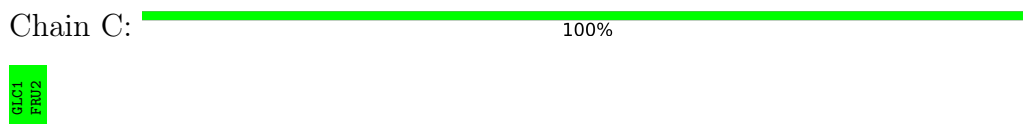
- Molecule 1: 50S ribosomal protein L1



- Molecule 2: fragment of 23S rRNA



- Molecule 3: beta-D-fructofuranose-(2-1)-alpha-D-glucopyranose



## 4 Data and refinement statistics i

Property	Value	Source
Space group	P 21 21 21	Depositor
Cell constants a, b, c, $\alpha$ , $\beta$ , $\gamma$	73.14Å 75.84Å 86.50Å 90.00° 90.00° 90.00°	Depositor
Resolution (Å)	23.46 – 1.90 23.46 – 1.90	Depositor EDS
% Data completeness (in resolution range)	97.2 (23.46-1.90) 97.2 (23.46-1.90)	Depositor EDS
$R_{merge}$	(Not available)	Depositor
$R_{sym}$	(Not available)	Depositor
$\langle I/\sigma(I) \rangle$ <sup>1</sup>	1.75 (at 1.90Å)	Xtrriage
Refinement program	PHENIX (phenix.refine: 1.9_1690)	Depositor
R, $R_{free}$	0.194 , 0.217 0.196 , 0.218	Depositor DCC
$R_{free}$ test set	1909 reflections (5.09%)	wwPDB-VP
Wilson B-factor (Å <sup>2</sup> )	21.1	Xtrriage
Anisotropy	0.229	Xtrriage
Bulk solvent $k_{sol}$ (e/Å <sup>3</sup> ), $B_{sol}$ (Å <sup>2</sup> )	0.35 , 48.0	EDS
L-test for twinning <sup>2</sup>	$\langle  L  \rangle = 0.49$ , $\langle L^2 \rangle = 0.33$	Xtrriage
Estimated twinning fraction	0.019 for k,h,-l	Xtrriage
$F_o, F_c$ correlation	0.94	EDS
Total number of atoms	3895	wwPDB-VP
Average B, all atoms (Å <sup>2</sup> )	25.0	wwPDB-VP

Xtrriage's analysis on translational NCS is as follows: *The largest off-origin peak in the Patterson function is 4.98% of the height of the origin peak. No significant pseudotranslation is detected.*

<sup>1</sup>Intensities estimated from amplitudes.

<sup>2</sup>Theoretical values of  $\langle |L| \rangle$ ,  $\langle L^2 \rangle$  for acentric reflections are 0.5, 0.333 respectively for untwinned datasets, and 0.375, 0.2 for perfectly twinned datasets.

## 5 Model quality [i](#)

### 5.1 Standard geometry [i](#)

Bond lengths and bond angles in the following residue types are not validated in this section: SO4, MES, ACT, FRU, GLC

The Z score for a bond length (or angle) is the number of standard deviations the observed value is removed from the expected value. A bond length (or angle) with  $|Z| > 5$  is considered an outlier worth inspection. RMSZ is the root-mean-square of all Z scores of the bond lengths (or angles).

Mol	Chain	Bond lengths		Bond angles	
		RMSZ	# $ Z  > 5$	RMSZ	# $ Z  > 5$
1	A	0.36	0/1800	0.51	0/2427
2	B	0.66	3/1927 (0.2%)	1.05	2/3005 (0.1%)
All	All	0.54	3/3727 (0.1%)	0.85	2/5432 (0.0%)

All (3) bond length outliers are listed below:

Mol	Chain	Res	Type	Atoms	Z	Observed(Å)	Ideal(Å)
2	B	2132	U	O3'-P	13.90	1.77	1.61
2	B	2132	U	C4'-O4'	11.10	1.59	1.45
2	B	2105	G	OP3-P	-10.39	1.48	1.61

All (2) bond angle outliers are listed below:

Mol	Chain	Res	Type	Atoms	Z	Observed(°)	Ideal(°)
2	B	2132	U	C5'-C4'-O4'	-15.85	90.08	109.10
2	B	2132	U	C1'-O4'-C4'	-15.42	97.56	109.90

There are no chirality outliers.

There are no planarity outliers.

### 5.2 Too-close contacts [i](#)

In the following table, the Non-H and H(model) columns list the number of non-hydrogen atoms and hydrogen atoms in the chain respectively. The H(added) column lists the number of hydrogen atoms added and optimized by MolProbity. The Clashes column lists the number of clashes within the asymmetric unit, whereas Symm-Clashes lists symmetry-related clashes.

Mol	Chain	Non-H	H(model)	H(added)	Clashes	Symm-Clashes
1	A	1764	0	1824	10	0

*Continued on next page...*



*Continued from previous page...*

Mol	Chain	Non-H	H(model)	H(added)	Clashes	Symm-Clashes
2	B	1723	0	869	5	0
3	C	23	0	21	0	0
4	A	10	0	0	1	0
4	B	10	0	0	0	0
5	A	8	0	6	0	0
5	B	8	0	6	0	0
6	B	12	0	12	0	0
7	A	122	0	0	0	0
7	B	215	0	0	2	0
All	All	3895	0	2738	15	0

The all-atom clashscore is defined as the number of clashes found per 1000 atoms (including hydrogen atoms). The all-atom clashscore for this structure is 2.

All (15) close contacts within the same asymmetric unit are listed below, sorted by their clash magnitude.

Atom-1	Atom-2	Interatomic distance (Å)	Clash overlap (Å)
1:A:144:THR:HG22	1:A:156:ILE:HD11	1.80	0.62
2:B:2160:G:H8	2:B:2160:G:H5''	1.78	0.49
1:A:139:ASN:HD21	1:A:141:LYS:HD3	1.79	0.48
2:B:2131:G:H5''	2:B:2133:G:O4'	2.14	0.47
1:A:59:ARG:HG2	1:A:164:ARG:HG3	1.98	0.45
1:A:139:ASN:OD1	1:A:141:LYS:HB3	2.16	0.45
2:B:2176:A:H2'	2:B:2177:C:C6	2.53	0.44
1:A:139:ASN:HA	1:A:140:PRO:HD3	1.84	0.44
1:A:70:LYS:HE3	1:A:70:LYS:HB2	1.82	0.44
1:A:77:ILE:HG22	1:A:119:VAL:HG11	2.00	0.44
1:A:2:LYS:NZ	4:A:301:SO4:O1	2.45	0.43
1:A:59:ARG:HD3	1:A:141:LYS:HZ3	1.85	0.41
2:B:2172:U:H5''	7:B:2386:HOH:O	2.20	0.41
2:B:2134:A:N1	7:B:2368:HOH:O	2.37	0.41
1:A:82:LYS:HA	1:A:82:LYS:HD3	1.94	0.40

There are no symmetry-related clashes.

## 5.3 Torsion angles [i](#)

### 5.3.1 Protein backbone [i](#)

In the following table, the Percentiles column shows the percent Ramachandran outliers of the chain as a percentile score with respect to all X-ray entries followed by that with respect to entries of similar resolution.

The Analysed column shows the number of residues for which the backbone conformation was analysed, and the total number of residues.

Mol	Chain	Analysed	Favoured	Allowed	Outliers	Percentiles
1	A	229/229 (100%)	221 (96%)	8 (4%)	0	100 100

There are no Ramachandran outliers to report.

### 5.3.2 Protein sidechains [i](#)

In the following table, the Percentiles column shows the percent sidechain outliers of the chain as a percentile score with respect to all X-ray entries followed by that with respect to entries of similar resolution.

The Analysed column shows the number of residues for which the sidechain conformation was analysed, and the total number of residues.

Mol	Chain	Analysed	Rotameric	Outliers	Percentiles
1	A	183/181 (101%)	177 (97%)	6 (3%)	38 29

All (6) residues with a non-rotameric sidechain are listed below:

Mol	Chain	Res	Type
1	A	0	MET
1	A	29	VAL
1	A	63[A]	SER
1	A	63[B]	SER
1	A	81	GLU
1	A	205	LYS

Sometimes sidechains can be flipped to improve hydrogen bonding and reduce clashes. There are no such sidechains identified.

### 5.3.3 RNA [i](#)

Mol	Chain	Analysed	Backbone Outliers	Pucker Outliers
2	B	79/80 (98%)	4 (5%)	1 (1%)

All (4) RNA backbone outliers are listed below:

Mol	Chain	Res	Type
2	B	2148	G
2	B	2159	G
2	B	2160	G
2	B	2172	U

All (1) RNA pucker outliers are listed below:

Mol	Chain	Res	Type
2	B	2172	U

## 5.4 Non-standard residues in protein, DNA, RNA chains [i](#)

There are no non-standard protein/DNA/RNA residues in this entry.

## 5.5 Carbohydrates [i](#)

2 monosaccharides are modelled in this entry.

In the following table, the Counts columns list the number of bonds (or angles) for which Mogul statistics could be retrieved, the number of bonds (or angles) that are observed in the model and the number of bonds (or angles) that are defined in the Chemical Component Dictionary. The Link column lists molecule types, if any, to which the group is linked. The Z score for a bond length (or angle) is the number of standard deviations the observed value is removed from the expected value. A bond length (or angle) with  $|Z| > 2$  is considered an outlier worth inspection. RMSZ is the root-mean-square of all Z scores of the bond lengths (or angles).

Mol	Type	Chain	Res	Link	Bond lengths			Bond angles		
					Counts	RMSZ	# Z  > 2	Counts	RMSZ	# Z  > 2
3	GLC	C	1	3	11,11,12	0.49	0	15,15,17	0.98	0
3	FRU	C	2	3	11,12,12	0.56	0	10,18,18	0.72	0

In the following table, the Chirals column lists the number of chiral outliers, the number of chiral centers analysed, the number of these observed in the model and the number defined in the Chemical Component Dictionary. Similar counts are reported in the Torsion and Rings columns. '-' means no outliers of that kind were identified.

Mol	Type	Chain	Res	Link	Chirals	Torsions	Rings
3	GLC	C	1	3	-	2/2/19/22	0/1/1/1
3	FRU	C	2	3	-	2/5/24/24	0/1/1/1

There are no bond length outliers.

There are no bond angle outliers.

There are no chirality outliers.

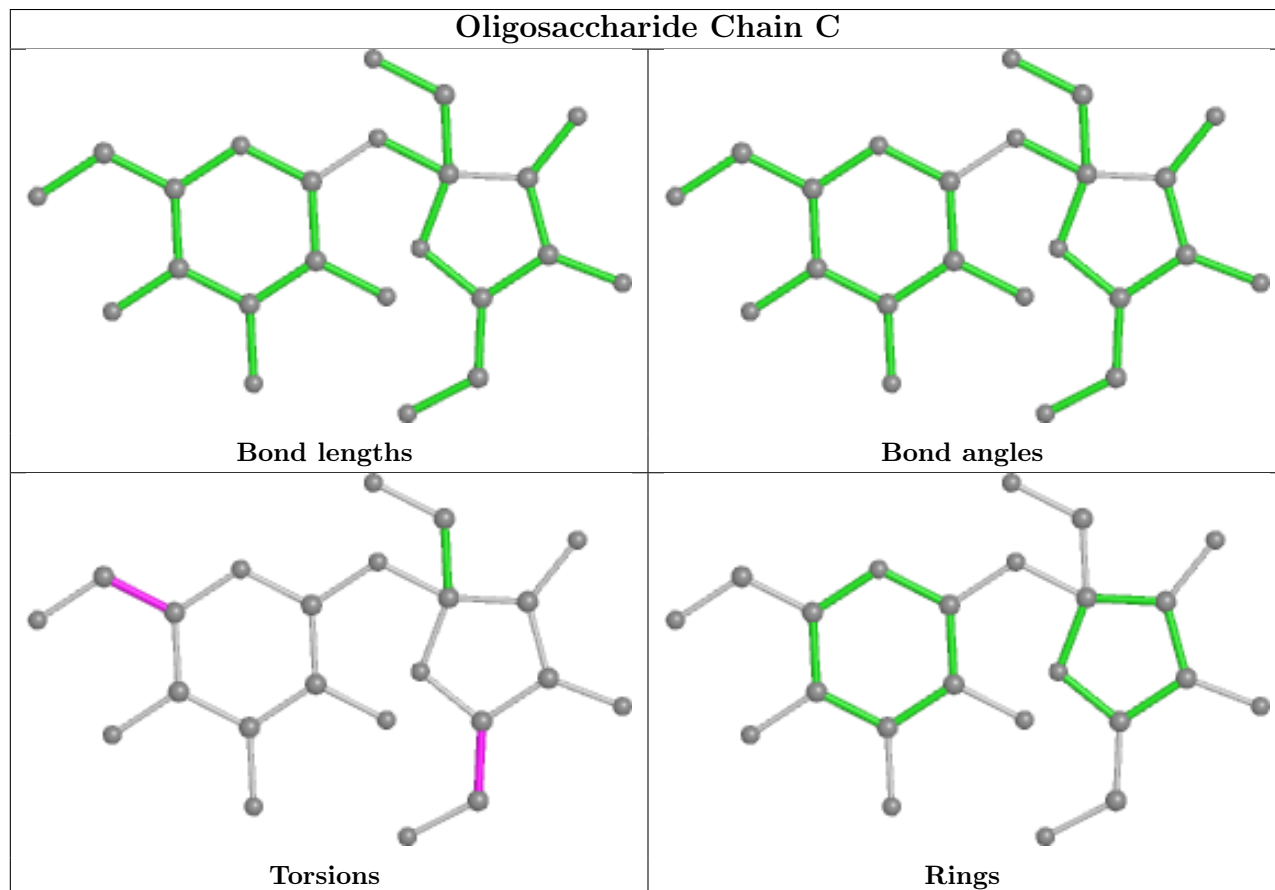
All (4) torsion outliers are listed below:

Mol	Chain	Res	Type	Atoms
3	C	2	FRU	C4-C5-C6-O6
3	C	2	FRU	O5-C5-C6-O6
3	C	1	GLC	C4-C5-C6-O6
3	C	1	GLC	O5-C5-C6-O6

There are no ring outliers.

No monomer is involved in short contacts.

The following is a two-dimensional graphical depiction of Mogul quality analysis of bond lengths, bond angles, torsion angles, and ring geometry for oligosaccharide.



## 5.6 Ligand geometry

9 ligands are modelled in this entry.

In the following table, the Counts columns list the number of bonds (or angles) for which Mogul statistics could be retrieved, the number of bonds (or angles) that are observed in the model and the number of bonds (or angles) that are defined in the Chemical Component Dictionary. The Link column lists molecule types, if any, to which the group is linked. The Z score for a bond length (or angle) is the number of standard deviations the observed value is removed from the expected value. A bond length (or angle) with  $|Z| > 2$  is considered an outlier worth inspection. RMSZ is the root-mean-square of all Z scores of the bond lengths (or angles).

Mol	Type	Chain	Res	Link	Bond lengths			Bond angles		
					Counts	RMSZ	# Z  > 2	Counts	RMSZ	# Z  > 2
4	SO4	B	2201	-	4,4,4	0.15	0	6,6,6	0.05	0
6	MES	B	2204	-	12,12,12	2.24	1 (8%)	14,16,16	2.02	5 (35%)
4	SO4	B	2202	-	4,4,4	0.15	0	6,6,6	0.12	0
5	ACT	A	303	-	3,3,3	0.73	0	3,3,3	1.44	0
4	SO4	A	301	-	4,4,4	0.11	0	6,6,6	0.24	0
4	SO4	A	302	-	4,4,4	0.14	0	6,6,6	0.12	0
5	ACT	B	2205	-	3,3,3	0.80	0	3,3,3	1.27	0
5	ACT	B	2206	-	3,3,3	0.77	0	3,3,3	1.37	0
5	ACT	A	304	-	3,3,3	0.79	0	3,3,3	1.51	0

In the following table, the Chirals column lists the number of chiral outliers, the number of chiral centers analysed, the number of these observed in the model and the number defined in the Chemical Component Dictionary. Similar counts are reported in the Torsion and Rings columns. '-' means no outliers of that kind were identified.

Mol	Type	Chain	Res	Link	Chirals	Torsions	Rings
6	MES	B	2204	-	-	3/6/14/14	0/1/1/1

All (1) bond length outliers are listed below:

Mol	Chain	Res	Type	Atoms	Z	Observed(Å)	Ideal(Å)
6	B	2204	MES	C8-S	-7.35	1.67	1.77

All (5) bond angle outliers are listed below:

Mol	Chain	Res	Type	Atoms	Z	Observed(°)	Ideal(°)
6	B	2204	MES	C5-N4-C3	4.56	119.09	108.83
6	B	2204	MES	O2S-S-C8	2.79	110.28	106.92
6	B	2204	MES	C6-C5-N4	-2.77	105.90	110.10
6	B	2204	MES	C7-N4-C5	2.66	118.03	111.23
6	B	2204	MES	O1S-S-C8	2.66	110.12	106.92

There are no chirality outliers.

All (3) torsion outliers are listed below:

Mol	Chain	Res	Type	Atoms
6	B	2204	MES	C8-C7-N4-C5
6	B	2204	MES	C8-C7-N4-C3
6	B	2204	MES	C7-C8-S-O2S

There are no ring outliers.

1 monomer is involved in 1 short contact:

Mol	Chain	Res	Type	Clashes	Symm-Clashes
4	A	301	SO4	1	0

## 5.7 Other polymers [i](#)

There are no such residues in this entry.

## 5.8 Polymer linkage issues [i](#)

The following chains have linkage breaks:

Mol	Chain	Number of breaks
2	B	1

All chain breaks are listed below:

Model	Chain	Residue-1	Atom-1	Residue-2	Atom-2	Distance (Å)
1	B	2132:U	O3'	2133:G	P	1.77

## 6 Fit of model and data [i](#)

### 6.1 Protein, DNA and RNA chains [i](#)

In the following table, the column labelled ‘#RSRZ> 2’ contains the number (and percentage) of RSRZ outliers, followed by percent RSRZ outliers for the chain as percentile scores relative to all X-ray entries and entries of similar resolution. The OWAB column contains the minimum, median, 95<sup>th</sup> percentile and maximum values of the occupancy-weighted average B-factor per residue. The column labelled ‘Q< 0.9’ lists the number of (and percentage) of residues with an average occupancy less than 0.9.

Mol	Chain	Analysed	<RSRZ>	#RSRZ>2	OWAB(Å <sup>2</sup> )	Q<0.9
1	A	229/229 (100%)	0.34	8 (3%) 44 47	10, 24, 45, 57	0
2	B	80/80 (100%)	-0.30	0 100 100	12, 23, 39, 48	0
All	All	309/309 (100%)	0.17	8 (2%) 56 58	10, 24, 44, 57	0

All (8) RSRZ outliers are listed below:

Mol	Chain	Res	Type	RSRZ
1	A	0	MET	8.7
1	A	141	LYS	4.6
1	A	147	PHE	3.2
1	A	140	PRO	3.2
1	A	129	ARG	2.4
1	A	84	LYS	2.4
1	A	88	GLU	2.3
1	A	130	ILE	2.1

### 6.2 Non-standard residues in protein, DNA, RNA chains [i](#)

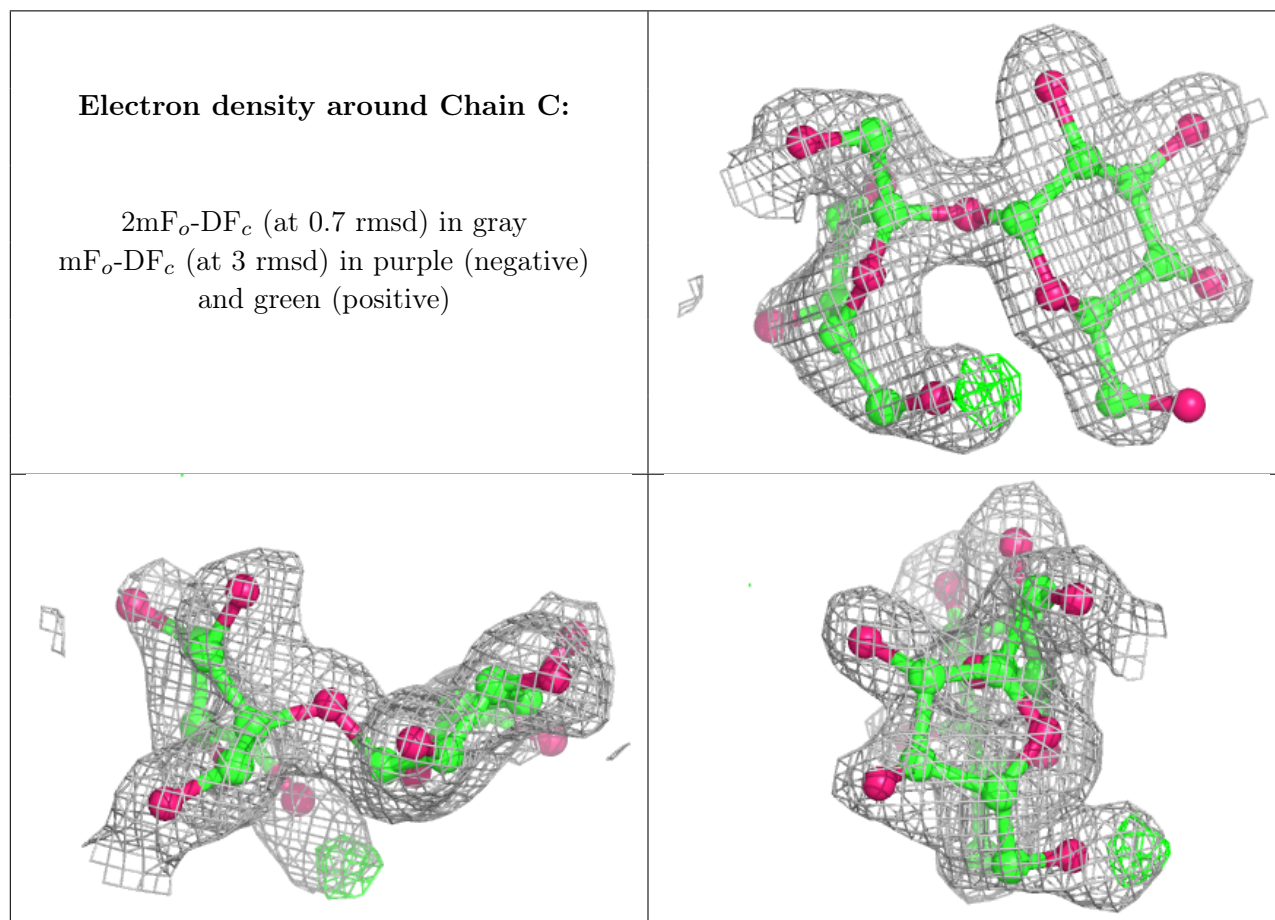
There are no non-standard protein/DNA/RNA residues in this entry.

### 6.3 Carbohydrates [i](#)

In the following table, the Atoms column lists the number of modelled atoms in the group and the number defined in the chemical component dictionary. The B-factors column lists the minimum, median, 95<sup>th</sup> percentile and maximum values of B factors of atoms in the group. The column labelled ‘Q< 0.9’ lists the number of atoms with occupancy less than 0.9.

Mol	Type	Chain	Res	Atoms	RSCC	RSR	B-factors(Å <sup>2</sup> )	Q<0.9
3	FRU	C	2	12/12	0.80	0.21	22,35,40,45	0
3	GLC	C	1	11/12	0.93	0.14	20,27,36,48	0

The following is a graphical depiction of the model fit to experimental electron density for oligosaccharide. Each fit is shown from different orientation to approximate a three-dimensional view.



## 6.4 Ligands [i](#)

In the following table, the Atoms column lists the number of modelled atoms in the group and the number defined in the chemical component dictionary. The B-factors column lists the minimum, median, 95<sup>th</sup> percentile and maximum values of B factors of atoms in the group. The column labelled 'Q< 0.9' lists the number of atoms with occupancy less than 0.9.

Mol	Type	Chain	Res	Atoms	RSCC	RSR	B-factors( $\text{\AA}^2$ )	Q<0.9
5	ACT	A	304	4/4	0.87	0.14	38,42,47,48	0
6	MES	B	2204	12/12	0.89	0.24	26,38,45,51	0
5	ACT	B	2206	4/4	0.90	0.10	37,38,40,44	0
4	SO4	A	302	5/5	0.91	0.35	60,61,72,77	0
4	SO4	B	2202	5/5	0.92	0.20	32,54,60,64	0
5	ACT	B	2205	4/4	0.92	0.13	35,40,41,42	0
5	ACT	A	303	4/4	0.95	0.14	37,40,42,42	0
4	SO4	B	2201	5/5	0.96	0.21	38,41,48,57	0
4	SO4	A	301	5/5	0.98	0.08	28,32,35,39	0



## 6.5 Other polymers [i](#)

There are no such residues in this entry.