



Full wwPDB X-ray Structure Validation Report ⓘ

Jun 16, 2024 – 07:48 PM EDT

PDB ID : 5HE3
Title : Bovine GRK2 in complex with Gbetagamma subunits and CCG224411
Authors : Cato, M.C.; Tesmer, J.J.G.
Deposited on : 2016-01-05
Resolution : 2.74 Å(reported)

This is a Full wwPDB X-ray Structure Validation Report for a publicly released PDB entry.

We welcome your comments at validation@mail.wwpdb.org

A user guide is available at

<https://www.wwpdb.org/validation/2017/XrayValidationReportHelp>

with specific help available everywhere you see the ⓘ symbol.

The types of validation reports are described at

<http://www.wwpdb.org/validation/2017/FAQs#types>.

The following versions of software and data (see [references ⓘ](#)) were used in the production of this report:

MolProbity : 4.02b-467
Mogul : 1.8.5 (274361), CSD as541be (2020)
Xtriage (Phenix) : 1.13
EDS : 2.37.1
buster-report : 1.1.7 (2018)
Percentile statistics : 20191225.v01 (using entries in the PDB archive December 25th 2019)
Refmac : 5.8.0158
CCP4 : 7.0.044 (Gargrove)
Ideal geometry (proteins) : Engh & Huber (2001)
Ideal geometry (DNA, RNA) : Parkinson et al. (1996)
Validation Pipeline (wwPDB-VP) : 2.37.1

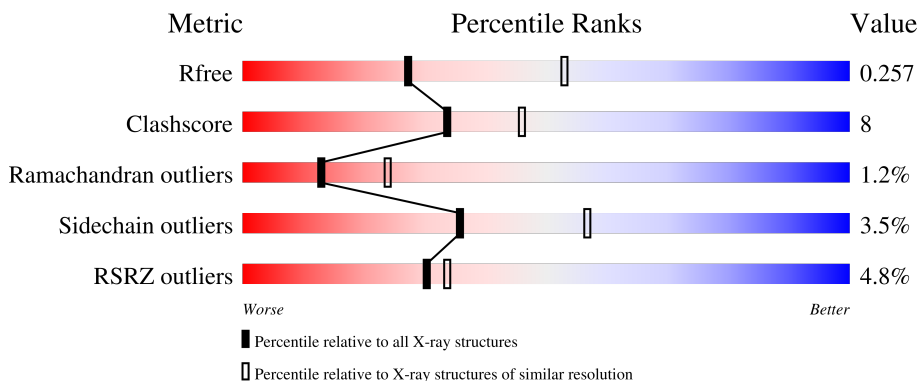
1 Overall quality at a glance

The following experimental techniques were used to determine the structure:

X-RAY DIFFRACTION

The reported resolution of this entry is 2.74 Å.

Percentile scores (ranging between 0-100) for global validation metrics of the entry are shown in the following graphic. The table shows the number of entries on which the scores are based.



Metric	Whole archive (#Entries)	Similar resolution (#Entries, resolution range(Å))
R_{free}	130704	1271 (2.76-2.72)
Clashscore	141614	1322 (2.76-2.72)
Ramachandran outliers	138981	1297 (2.76-2.72)
Sidechain outliers	138945	1298 (2.76-2.72)
RSRZ outliers	127900	1243 (2.76-2.72)

The table below summarises the geometric issues observed across the polymeric chains and their fit to the electron density. The red, orange, yellow and green segments of the lower bar indicate the fraction of residues that contain outliers for ≥ 3 , 2, 1 and 0 types of geometric quality criteria respectively. A grey segment represents the fraction of residues that are not modelled. The numeric value for each fraction is indicated below the corresponding segment, with a dot representing fractions $\leq 5\%$. The upper red bar (where present) indicates the fraction of residues that have poor fit to the electron density. The numeric value is given above the bar.

Mol	Chain	Length	Quality of chain
1	A	641	 6% 71% 24% . .
2	B	339	 2% 76% 23% .
3	G	71	 3% 75% 7% 18%

2 Entry composition [i](#)

There are 6 unique types of molecules in this entry. The entry contains 8263 atoms, of which 0 are hydrogens and 0 are deuteriums.

In the tables below, the ZeroOcc column contains the number of atoms modelled with zero occupancy, the AltConf column contains the number of residues with at least one atom in alternate conformation and the Trace column contains the number of residues modelled with at most 2 atoms.

- Molecule 1 is a protein called Beta-adrenergic receptor kinase 1.

Mol	Chain	Residues	Atoms					ZeroOcc	AltConf	Trace
			Total	C	N	O	S			
1	A	623	5119	3268	892	923	36	0	1	0

- Molecule 2 is a protein called Guanine nucleotide-binding protein G(I)/G(S)/G(T) subunit beta-1.

Mol	Chain	Residues	Atoms					ZeroOcc	AltConf	Trace
			Total	C	N	O	S			
2	B	339	2619	1613	470	513	23	0	2	0

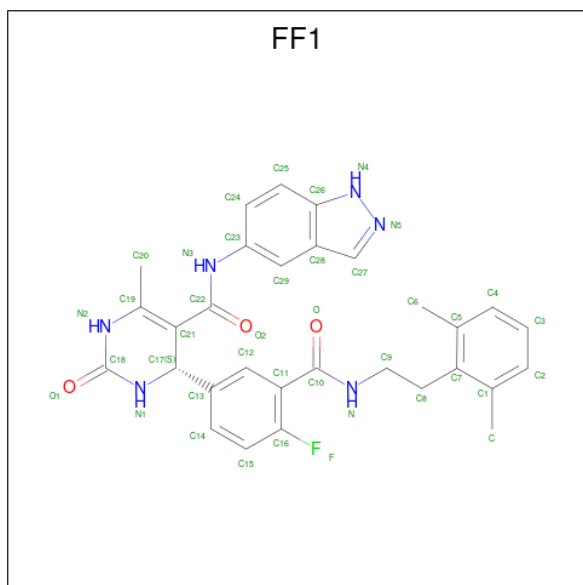
- Molecule 3 is a protein called Guanine nucleotide-binding protein G(I)/G(S)/G(O) subunit gamma-2.

Mol	Chain	Residues	Atoms					ZeroOcc	AltConf	Trace
			Total	C	N	O	S			
3	G	58	445	278	78	86	3	0	0	0

- Molecule 4 is MAGNESIUM ION (three-letter code: MG) (formula: Mg).

Mol	Chain	Residues	Atoms		ZeroOcc	AltConf
4	A	1	Total	Mg	0	0
			1	1		

- Molecule 5 is (4 {S})-4-[3-[2-(2,6-dimethylphenyl)ethylcarbamoyl]-4-fluoranyl-phenyl]- {N}-(1 {H}-indazol-5-yl)-6-methyl-2-oxidanylidene-3,4-dihydro-1 {H}-pyrimidine-5-carboxamide (three-letter code: FF1) (formula: C₃₀H₂₉FN₆O₃).



Mol	Chain	Residues	Atoms					ZeroOcc	AltConf
			Total	C	F	N	O		
5	A	1	40	30	1	6	3	0	0

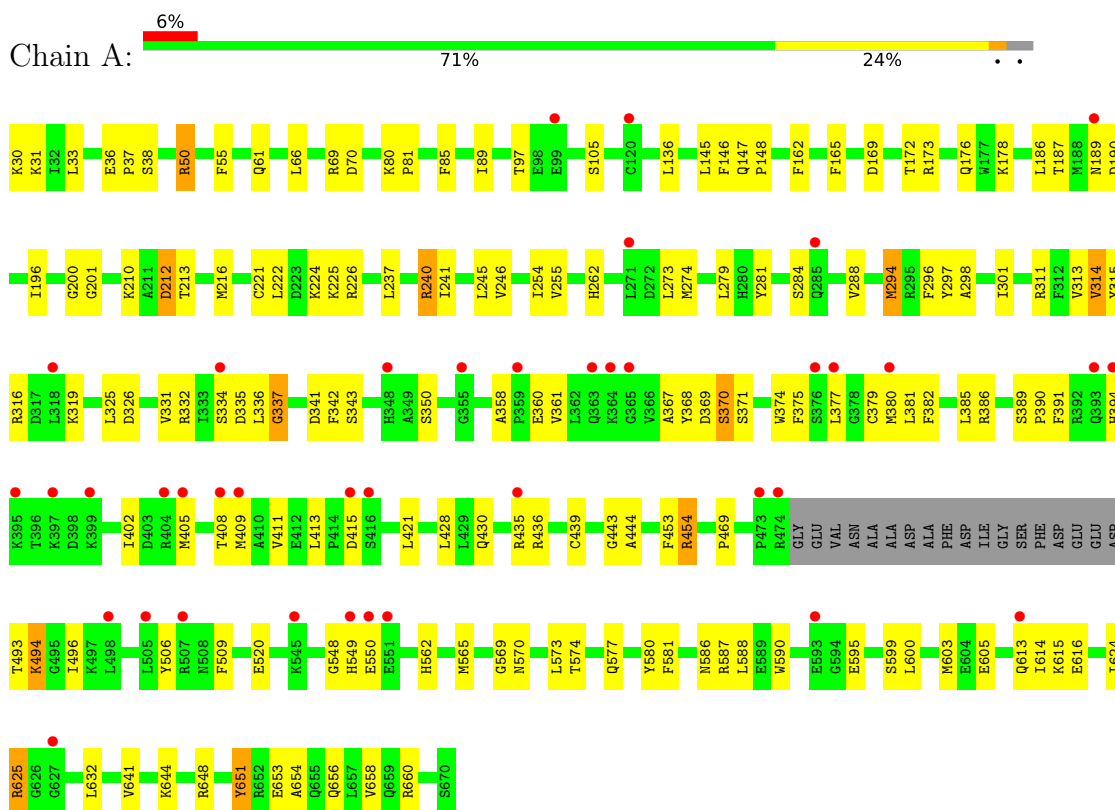
- Molecule 6 is water.

Mol	Chain	Residues	Atoms		ZeroOcc	AltConf
6	A	17	Total	O	0	0
			17	17		
6	B	20	Total	O	0	0
			20	20		
6	G	2	Total	O	0	0
			2	2		

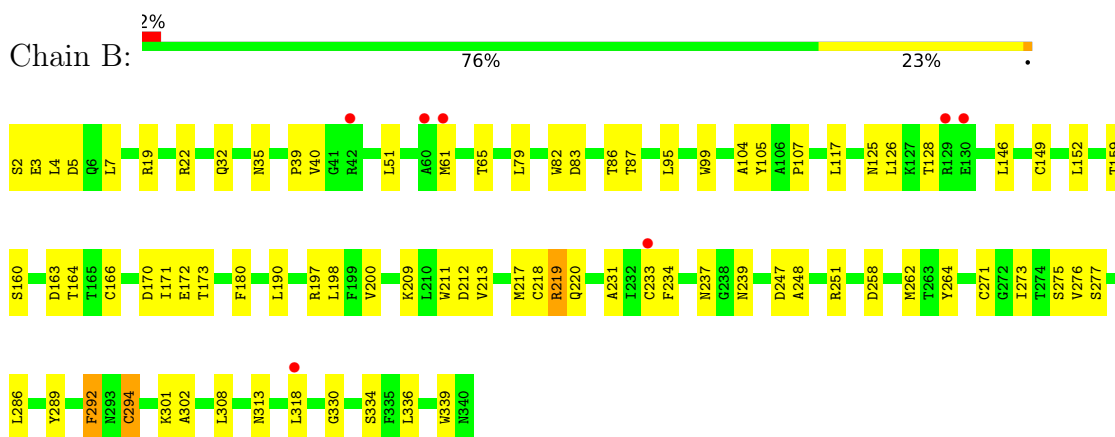
3 Residue-property plots

These plots are drawn for all protein, RNA, DNA and oligosaccharide chains in the entry. The first graphic for a chain summarises the proportions of the various outlier classes displayed in the second graphic. The second graphic shows the sequence view annotated by issues in geometry and electron density. Residues are color-coded according to the number of geometric quality criteria for which they contain at least one outlier: green = 0, yellow = 1, orange = 2 and red = 3 or more. A red dot above a residue indicates a poor fit to the electron density ($RSRZ > 2$). Stretches of 2 or more consecutive residues without any outlier are shown as a green connector. Residues present in the sample, but not in the model, are shown in grey.


- Molecule 1: Beta-adrenergic receptor kinase 1

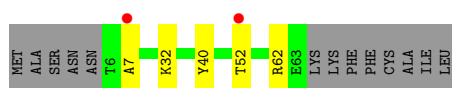


- Molecule 2: Guanine nucleotide-binding protein G(I)/G(S)/G(T) subunit beta-1



- Molecule 3: Guanine nucleotide-binding protein G(I)/G(S)/G(O) subunit gamma-2

Chain G:  3% 75% 7% 18%



4 Data and refinement statistics

Property	Value	Source
Space group	C 2 2 21	Depositor
Cell constants a, b, c, α , β , γ	60.03Å 239.41Å 208.62Å 90.00° 90.00° 90.00°	Depositor
Resolution (Å)	30.00 – 2.74 29.72 – 2.74	Depositor EDS
% Data completeness (in resolution range)	90.6 (30.00-2.74) 90.7 (29.72-2.74)	Depositor EDS
R_{merge}	0.10	Depositor
R_{sym}	(Not available)	Depositor
$\langle I/\sigma(I) \rangle$ ¹	1.60 (at 2.72Å)	Xtrriage
Refinement program	REFMAC 5.8.0073	Depositor
R, R_{free}	0.195 , 0.257 0.199 , 0.257	Depositor DCC
R_{free} test set	1871 reflections (5.15%)	wwPDB-VP
Wilson B-factor (Å ²)	62.4	Xtrriage
Anisotropy	0.249	Xtrriage
Bulk solvent k_{sol} (e/Å ³), B_{sol} (Å ²)	0.30 , 56.6	EDS
L-test for twinning ²	$\langle L \rangle = 0.48$, $\langle L^2 \rangle = 0.31$	Xtrriage
Estimated twinning fraction	No twinning to report.	Xtrriage
F_o, F_c correlation	0.95	EDS
Total number of atoms	8263	wwPDB-VP
Average B, all atoms (Å ²)	75.0	wwPDB-VP

Xtrriage's analysis on translational NCS is as follows: *The largest off-origin peak in the Patterson function is 3.21% of the height of the origin peak. No significant pseudotranslation is detected.*

¹Intensities estimated from amplitudes.

²Theoretical values of $\langle |L| \rangle$, $\langle L^2 \rangle$ for acentric reflections are 0.5, 0.333 respectively for untwinned datasets, and 0.375, 0.2 for perfectly twinned datasets.

5 Model quality [i](#)

5.1 Standard geometry [i](#)

Bond lengths and bond angles in the following residue types are not validated in this section: MG, FF1

The Z score for a bond length (or angle) is the number of standard deviations the observed value is removed from the expected value. A bond length (or angle) with $|Z| > 5$ is considered an outlier worth inspection. RMSZ is the root-mean-square of all Z scores of the bond lengths (or angles).

Mol	Chain	Bond lengths		Bond angles	
		RMSZ	# Z >5	RMSZ	# Z >5
1	A	0.62	0/5238	0.78	1/7039 (0.0%)
2	B	0.65	0/2666	0.85	1/3613 (0.0%)
3	G	0.58	0/451	0.78	0/609
All	All	0.63	0/8355	0.81	2/11261 (0.0%)

There are no bond length outliers.

All (2) bond angle outliers are listed below:

Mol	Chain	Res	Type	Atoms	Z	Observed(°)	Ideal(°)
2	B	251	ARG	NE-CZ-NH2	-5.31	117.65	120.30
1	A	625	ARG	NE-CZ-NH1	5.16	122.88	120.30

There are no chirality outliers.

There are no planarity outliers.

5.2 Too-close contacts [i](#)

In the following table, the Non-H and H(model) columns list the number of non-hydrogen atoms and hydrogen atoms in the chain respectively. The H(added) column lists the number of hydrogen atoms added and optimized by MolProbity. The Clashes column lists the number of clashes within the asymmetric unit, whereas Symm-Clashes lists symmetry-related clashes.

Mol	Chain	Non-H	H(model)	H(added)	Clashes	Symm-Clashes
1	A	5119	0	5130	93	0
2	B	2619	0	2518	46	0
3	G	445	0	454	2	0
4	A	1	0	0	0	0
5	A	40	0	0	2	0
6	A	17	0	0	1	0

Continued on next page...

Continued from previous page...

Mol	Chain	Non-H	H(model)	H(added)	Clashes	Symm-Clashes
6	B	20	0	0	1	0
6	G	2	0	0	0	0
All	All	8263	0	8102	138	0

The all-atom clashscore is defined as the number of clashes found per 1000 atoms (including hydrogen atoms). The all-atom clashscore for this structure is 8.

All (138) close contacts within the same asymmetric unit are listed below, sorted by their clash magnitude.

Atom-1	Atom-2	Interatomic distance (Å)	Clash overlap (Å)
1:A:212:ASP:HB3	1:A:213:THR:HG23	1.55	0.88
1:A:294:MET:HE1	1:A:381:LEU:HD13	1.61	0.83
1:A:274:MET:SD	1:A:332:ARG:HD3	2.23	0.77
2:B:51:LEU:HB2	2:B:336:LEU:HB2	1.73	0.70
1:A:294:MET:CE	1:A:298:ALA:HB2	2.20	0.70
1:A:297:TYR:O	1:A:301:ILE:HG13	1.91	0.70
1:A:574:THR:HG22	1:A:574:THR:O	1.96	0.66
1:A:569:GLY:HA3	1:A:577:GLN:NE2	2.16	0.61
1:A:186:LEU:HA	1:A:190:ASP:OD2	2.01	0.61
1:A:614:ILE:O	1:A:615:LYS:HG3	2.01	0.61
1:A:436:ARG:HG2	1:A:439:CYS:SG	2.40	0.60
2:B:4:LEU:HD21	3:G:7:ALA:HA	1.84	0.60
1:A:411:VAL:HG23	1:A:413:LEU:HD21	1.83	0.59
1:A:237:LEU:O	1:A:241:ILE:HD12	2.03	0.59
2:B:79:LEU:HG	2:B:95:LEU:HD21	1.84	0.58
2:B:239:ASN:HB3	6:B:407:HOH:O	2.04	0.58
1:A:294:MET:HE3	1:A:298:ALA:HB2	1.85	0.57
1:A:210:LYS:HE2	1:A:520:GLU:OE2	2.05	0.56
1:A:172:THR:O	1:A:176:GLN:HG3	2.05	0.56
1:A:61:GLN:OE1	1:A:178:LYS:HE2	2.07	0.55
1:A:50:ARG:HG2	1:A:50:ARG:HH11	1.72	0.55
2:B:104:ALA:HB2	2:B:149:CYS:O	2.06	0.55
2:B:233[A]:CYS:SG	2:B:277:SER:HA	2.47	0.55
2:B:125:ASN:OD1	2:B:126:LEU:N	2.41	0.54
2:B:233[B]:CYS:SG	2:B:276:VAL:HG23	2.47	0.54
2:B:294:CYS:HB3	2:B:308:LEU:HB2	1.89	0.54
1:A:389:SER:OG	1:A:390:PRO:HD2	2.07	0.54
1:A:336:LEU:O	1:A:337:GLY:C	2.45	0.54
2:B:166:CYS:HB2	2:B:180:PHE:HB2	1.89	0.54
1:A:613:GLN:OE1	1:A:616:GLU:HA	2.09	0.53
2:B:163:ASP:C	2:B:164:THR:HG23	2.28	0.53

Continued on next page...

Continued from previous page...

Atom-1	Atom-2	Interatomic distance (Å)	Clash overlap (Å)
2:B:271[A]:CYS:SG	2:B:289:TYR:HB3	2.50	0.52
1:A:85:PHE:CE1	1:A:89:ILE:HD11	2.44	0.52
1:A:173:ARG:HA	1:A:176:GLN:OE1	2.10	0.52
2:B:318:LEU:C	2:B:318:LEU:HD12	2.30	0.52
1:A:274:MET:SD	1:A:332:ARG:CD	2.95	0.52
1:A:105:SER:HB2	1:A:136:LEU:HD21	1.91	0.51
1:A:360:GLU:OE1	1:A:360:GLU:N	2.40	0.51
1:A:245:LEU:O	1:A:311:ARG:HD3	2.11	0.51
1:A:224:LYS:HE2	1:A:506:TYR:CD2	2.45	0.51
1:A:69:ARG:O	1:A:70:ASP:C	2.49	0.50
2:B:2:SER:HB3	2:B:5:ASP:OD2	2.12	0.50
1:A:221:CYS:O	1:A:222:LEU:HD23	2.12	0.50
1:A:314:VAL:HG23	1:A:316:ARG:HD3	1.94	0.49
1:A:548:GLY:C	1:A:550:GLU:H	2.16	0.49
1:A:562:HIS:HD1	1:A:580:TYR:HH	1.60	0.49
1:A:201:GLY:O	1:A:226:ARG:HD3	2.12	0.49
2:B:146:LEU:HD11	2:B:159:THR:HB	1.95	0.49
2:B:198:LEU:HD23	2:B:212:ASP:HA	1.95	0.49
1:A:453:PHE:O	1:A:454:ARG:C	2.51	0.49
2:B:3:GLU:O	2:B:7:LEU:HG	2.13	0.49
2:B:219:ARG:C	2:B:220:GLN:HG3	2.33	0.49
1:A:80:LYS:N	1:A:81:PRO:HD2	2.29	0.48
2:B:286:LEU:HD12	2:B:286:LEU:N	2.28	0.48
2:B:301:LYS:O	2:B:302:ALA:HB3	2.13	0.48
1:A:281:TYR:O	1:A:284:SER:HB2	2.14	0.48
1:A:430:GLN:HG3	1:A:435:ARG:O	2.13	0.47
1:A:216:MET:HB3	1:A:273:LEU:HD23	1.96	0.47
1:A:274:MET:HE3	1:A:325:LEU:C	2.35	0.47
1:A:274:MET:HE3	1:A:326:ASP:N	2.29	0.47
1:A:341:ASP:OD1	1:A:342:PHE:N	2.46	0.47
1:A:391:PHE:O	1:A:402:ILE:HG23	2.15	0.47
2:B:51:LEU:HB3	2:B:82:TRP:CZ3	2.50	0.47
2:B:231:ALA:CB	2:B:275:SER:HA	2.45	0.47
1:A:382:PHE:CZ	1:A:386:ARG:HG3	2.50	0.47
1:A:586:ASN:HB3	2:B:99:TRP:CH2	2.50	0.47
1:A:55:PHE:HA	1:A:162:PHE:CE1	2.50	0.46
1:A:570:ASN:HB2	1:A:573:LEU:HB3	1.97	0.46
1:A:654:ALA:O	1:A:658:VAL:HG23	2.15	0.46
1:A:656:GLN:HG3	1:A:660:ARG:NH2	2.30	0.46
1:A:605:GLU:HB3	1:A:624:ILE:HG23	1.97	0.46
2:B:170:ASP:OD2	2:B:173:THR:HG23	2.15	0.46

Continued on next page...

Continued from previous page...

Atom-1	Atom-2	Interatomic distance (Å)	Clash overlap (Å)
2:B:211:TRP:CZ3	2:B:218:CYS:HB2	2.50	0.46
2:B:200:VAL:HA	2:B:209:LYS:O	2.15	0.46
2:B:99:TRP:CB	2:B:117:LEU:HB2	2.45	0.46
2:B:247:ASP:O	2:B:248:ALA:HB3	2.15	0.46
1:A:162:PHE:O	1:A:165:PHE:HB3	2.15	0.46
2:B:32:GLN:HA	2:B:35:ASN:HD22	1.80	0.46
1:A:443:GLY:O	1:A:444:ALA:C	2.55	0.45
1:A:50:ARG:HG2	1:A:50:ARG:NH1	2.31	0.45
2:B:219:ARG:O	2:B:220:GLN:HG3	2.16	0.45
1:A:326:ASP:C	1:A:326:ASP:OD1	2.55	0.45
1:A:385:LEU:HD13	1:A:421:LEU:HD21	1.99	0.45
1:A:493:THR:O	1:A:494:LYS:HG3	2.17	0.45
1:A:367:ALA:O	1:A:368:TYR:HB3	2.17	0.44
2:B:160:SER:HB3	2:B:190:LEU:HD23	1.99	0.44
1:A:240:ARG:HG3	1:A:509:PHE:CD1	2.52	0.44
2:B:330:GLY:CA	2:B:336:LEU:HD23	2.47	0.44
1:A:581:PHE:CD2	1:A:590:TRP:HB3	2.52	0.44
2:B:86:THR:O	2:B:87:THR:OG1	2.29	0.44
1:A:66:LEU:HD23	1:A:66:LEU:HA	1.72	0.44
1:A:296:PHE:CD2	1:A:469:PRO:HD3	2.53	0.44
2:B:152:LEU:HD11	2:B:213:VAL:HG11	2.00	0.44
1:A:358:ALA:HA	1:A:375:PHE:CD1	2.52	0.44
2:B:19:ARG:CZ	2:B:19:ARG:HB3	2.48	0.44
1:A:587:ARG:HD2	1:A:600:LEU:HD22	1.99	0.44
1:A:574:THR:O	1:A:574:THR:CG2	2.66	0.43
2:B:171:ILE:O	2:B:172:GLU:C	2.57	0.43
1:A:603:MET:HB3	1:A:651:TYR:HA	2.00	0.43
1:A:565:MET:HE1	1:A:632:LEU:HD13	2.00	0.43
1:A:36:GLU:HB3	1:A:37:PRO:HD2	2.00	0.43
1:A:377:LEU:O	1:A:381:LEU:HG	2.18	0.43
1:A:196:ILE:HD12	1:A:196:ILE:H	1.83	0.43
1:A:644:LYS:HE3	1:A:648:ARG:NH1	2.33	0.43
1:A:200:GLY:HA3	5:A:702:FF1:C11	2.48	0.43
1:A:653:GLU:HB3	6:A:807:HOH:O	2.18	0.43
1:A:200:GLY:HA3	5:A:702:FF1:C16	2.49	0.43
2:B:125:ASN:OD1	2:B:125:ASN:C	2.57	0.43
1:A:315:TYR:OH	1:A:334:SER:O	2.23	0.43
1:A:358:ALA:HB3	1:A:361:VAL:HG23	2.00	0.42
2:B:22:ARG:NE	2:B:258:ASP:O	2.53	0.42
1:A:325:LEU:HG	1:A:331:VAL:HG12	2.02	0.42
1:A:294:MET:HE3	1:A:381:LEU:HD22	2.02	0.42

Continued on next page...

Continued from previous page...

Atom-1	Atom-2	Interatomic distance (Å)	Clash overlap (Å)
1:A:374:TRP:O	1:A:377:LEU:HB3	2.20	0.42
2:B:237:ASN:HB3	3:G:40:TYR:CD2	2.55	0.42
1:A:187:THR:C	1:A:189:ASN:N	2.71	0.42
2:B:83:ASP:OD1	2:B:83:ASP:C	2.58	0.42
1:A:319:LYS:HA	1:A:380:MET:HG3	2.02	0.42
1:A:369:ASP:O	1:A:371:SER:N	2.53	0.42
2:B:273:ILE:N	2:B:273:ILE:HD12	2.36	0.41
2:B:262:MET:HG2	2:B:264:TYR:CZ	2.55	0.41
1:A:50:ARG:NH2	1:A:641:VAL:HG11	2.36	0.41
1:A:30:LYS:HG2	1:A:31:LYS:N	2.35	0.41
2:B:65:THR:CG2	2:B:107:PRO:HA	2.50	0.41
1:A:145:LEU:HD23	1:A:146:PHE:CZ	2.56	0.41
1:A:428:LEU:O	1:A:436:ARG:CD	2.69	0.41
1:A:581:PHE:HB3	1:A:588:LEU:HD11	2.03	0.41
2:B:292:PHE:CD1	2:B:313:ASN:C	2.94	0.41
1:A:147:GLN:N	1:A:148:PRO:CD	2.84	0.41
1:A:225:LYS:HE3	1:A:496:ILE:O	2.19	0.41
1:A:279:LEU:HD23	1:A:279:LEU:HA	1.93	0.41
1:A:311:ARG:O	1:A:313:VAL:HG23	2.21	0.40
1:A:254:ILE:HG22	1:A:255:VAL:N	2.36	0.40
1:A:375:PHE:CD1	1:A:379:CYS:SG	3.14	0.40
2:B:308:LEU:HD22	2:B:339:TRP:CE3	2.56	0.40
1:A:369:ASP:O	1:A:370:SER:C	2.60	0.40
1:A:375:PHE:CE1	1:A:379:CYS:SG	3.14	0.40
2:B:61:MET:HE2	2:B:61:MET:HB2	1.94	0.40

There are no symmetry-related clashes.

5.3 Torsion angles [i](#)

5.3.1 Protein backbone [i](#)

In the following table, the Percentiles column shows the percent Ramachandran outliers of the chain as a percentile score with respect to all X-ray entries followed by that with respect to entries of similar resolution.

The Analysed column shows the number of residues for which the backbone conformation was analysed, and the total number of residues.

Mol	Chain	Analysed	Favoured	Allowed	Outliers	Percentiles
1	A	620/641 (97%)	552 (89%)	58 (9%)	10 (2%)	9 17

Continued on next page...

Continued from previous page...

Mol	Chain	Analysed	Favoured	Allowed	Outliers	Percentiles	
2	B	339/339 (100%)	312 (92%)	25 (7%)	2 (1%)	25	44
3	G	56/71 (79%)	53 (95%)	3 (5%)	0	100	100
All	All	1015/1051 (97%)	917 (90%)	86 (8%)	12 (1%)	13	24

All (12) Ramachandran outliers are listed below:

Mol	Chain	Res	Type
1	A	370	SER
1	A	212	ASP
1	A	394	HIS
1	A	454	ARG
2	B	39	PRO
1	A	335	ASP
1	A	350	SER
1	A	409	MET
1	A	549	HIS
2	B	292	PHE
1	A	288	VAL
1	A	337	GLY

5.3.2 Protein sidechains [i](#)

In the following table, the Percentiles column shows the percent sidechain outliers of the chain as a percentile score with respect to all X-ray entries followed by that with respect to entries of similar resolution.

The Analysed column shows the number of residues for which the sidechain conformation was analysed, and the total number of residues.

Mol	Chain	Analysed	Rotameric	Outliers	Percentiles	
1	A	563/575 (98%)	544 (97%)	19 (3%)	37	58
2	B	284/282 (101%)	275 (97%)	9 (3%)	39	59
3	G	47/58 (81%)	44 (94%)	3 (6%)	17	31
All	All	894/915 (98%)	863 (96%)	31 (4%)	36	57

All (31) residues with a non-rotameric sidechain are listed below:

Mol	Chain	Res	Type
1	A	33	LEU
1	A	38	SER

Continued on next page...

Continued from previous page...

Mol	Chain	Res	Type
1	A	50	ARG
1	A	97	THR
1	A	169	ASP
1	A	240	ARG
1	A	246	VAL
1	A	262	HIS
1	A	294	MET
1	A	314	VAL
1	A	343	SER
1	A	405	MET
1	A	408	THR
1	A	415	ASP
1	A	494	LYS
1	A	595	GLU
1	A	599	SER
1	A	625	ARG
1	A	651	TYR
2	B	40	VAL
2	B	105	TYR
2	B	128	THR
2	B	197	ARG
2	B	217	MET
2	B	219	ARG
2	B	234	PHE
2	B	294	CYS
2	B	334	SER
3	G	32	LYS
3	G	52	THR
3	G	62	ARG

Sometimes sidechains can be flipped to improve hydrogen bonding and reduce clashes. All (5) such sidechains are listed below:

Mol	Chain	Res	Type
1	A	75	HIS
1	A	185	HIS
1	A	393	GLN
2	B	35	ASN
2	B	44	GLN

5.3.3 RNA [i](#)

There are no RNA molecules in this entry.

5.4 Non-standard residues in protein, DNA, RNA chains [i](#)

There are no non-standard protein/DNA/RNA residues in this entry.

5.5 Carbohydrates [i](#)

There are no monosaccharides in this entry.

5.6 Ligand geometry [i](#)

Of 2 ligands modelled in this entry, 1 is monoatomic - leaving 1 for Mogul analysis.

In the following table, the Counts columns list the number of bonds (or angles) for which Mogul statistics could be retrieved, the number of bonds (or angles) that are observed in the model and the number of bonds (or angles) that are defined in the Chemical Component Dictionary. The Link column lists molecule types, if any, to which the group is linked. The Z score for a bond length (or angle) is the number of standard deviations the observed value is removed from the expected value. A bond length (or angle) with $|Z| > 2$ is considered an outlier worth inspection. RMSZ is the root-mean-square of all Z scores of the bond lengths (or angles).

Mol	Type	Chain	Res	Link	Bond lengths			Bond angles		
					Counts	RMSZ	# Z > 2	Counts	RMSZ	# Z > 2
5	FF1	A	702	-	42,44,44	2.30	6 (14%)	58,63,63	1.93	12 (20%)

In the following table, the Chirals column lists the number of chiral outliers, the number of chiral centers analysed, the number of these observed in the model and the number defined in the Chemical Component Dictionary. Similar counts are reported in the Torsion and Rings columns. '-' means no outliers of that kind were identified.

Mol	Type	Chain	Res	Link	Chirals	Torsions	Rings
5	FF1	A	702	-	-	3/22/38/38	0/5/5/5

All (6) bond length outliers are listed below:

Mol	Chain	Res	Type	Atoms	Z	Observed(Å)	Ideal(Å)
5	A	702	FF1	C19-C21	12.51	1.50	1.35
5	A	702	FF1	C19-N2	-3.34	1.34	1.38
5	A	702	FF1	C17-C21	-3.02	1.49	1.51

Continued on next page...

Continued from previous page...

Mol	Chain	Res	Type	Atoms	Z	Observed(Å)	Ideal(Å)
5	A	702	FF1	N5-N4	2.36	1.42	1.37
5	A	702	FF1	C23-N3	-2.27	1.37	1.41
5	A	702	FF1	C12-C13	2.02	1.42	1.39

All (12) bond angle outliers are listed below:

Mol	Chain	Res	Type	Atoms	Z	Observed(°)	Ideal(°)
5	A	702	FF1	N2-C18-N1	6.71	123.19	116.12
5	A	702	FF1	C19-N2-C18	-4.75	120.01	123.71
5	A	702	FF1	O2-C22-C21	-3.76	114.94	121.19
5	A	702	FF1	C25-C26-N4	3.63	136.10	130.19
5	A	702	FF1	C20-C19-N2	3.57	117.70	113.45
5	A	702	FF1	C15-C16-C11	-3.12	119.71	123.11
5	A	702	FF1	C20-C19-C21	-2.82	124.80	127.62
5	A	702	FF1	C16-C11-C10	-2.76	118.72	125.09
5	A	702	FF1	C27-C28-C26	2.54	110.04	104.66
5	A	702	FF1	C21-C19-N2	-2.33	117.34	119.27
5	A	702	FF1	O1-C18-N1	-2.12	118.70	122.92
5	A	702	FF1	C2-C1-C7	2.04	120.76	118.41

There are no chirality outliers.

All (3) torsion outliers are listed below:

Mol	Chain	Res	Type	Atoms
5	A	702	FF1	C7-C8-C9-N
5	A	702	FF1	N-C10-C11-C16
5	A	702	FF1	C21-C22-N3-C23

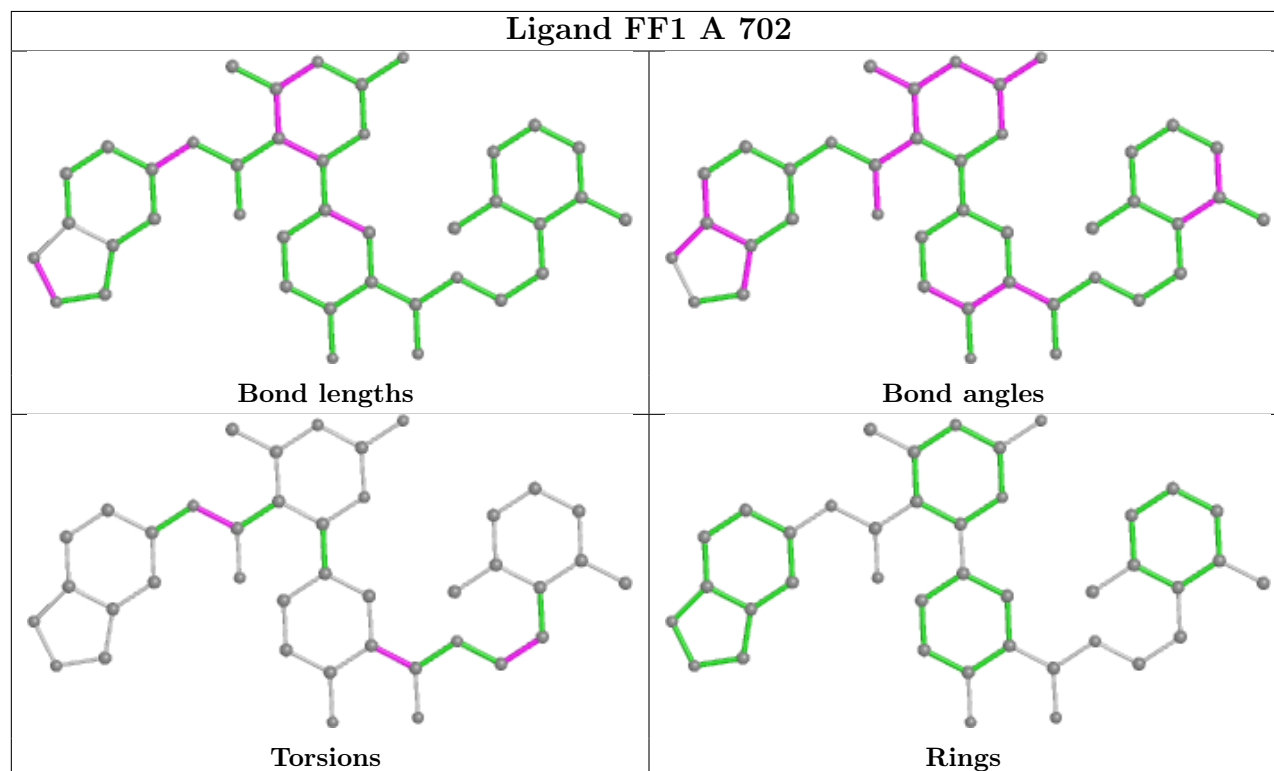
There are no ring outliers.

1 monomer is involved in 2 short contacts:

Mol	Chain	Res	Type	Clashes	Symm-Clashes
5	A	702	FF1	2	0

The following is a two-dimensional graphical depiction of Mogul quality analysis of bond lengths, bond angles, torsion angles, and ring geometry for all instances of the Ligand of Interest. In addition, ligands with molecular weight > 250 and outliers as shown on the validation Tables will also be included. For torsion angles, if less than 5% of the Mogul distribution of torsion angles is within 10 degrees of the torsion angle in question, then that torsion angle is considered an outlier. Any bond that is central to one or more torsion angles identified as an outlier by Mogul will be highlighted in the graph. For rings, the root-mean-square deviation (RMSD) between the ring

in question and similar rings identified by Mogul is calculated over all ring torsion angles. If the average RMSD is greater than 60 degrees and the minimal RMSD between the ring in question and any Mogul-identified rings is also greater than 60 degrees, then that ring is considered an outlier. The outliers are highlighted in purple. The color gray indicates Mogul did not find sufficient equivalents in the CSD to analyse the geometry.



5.7 Other polymers [i](#)

There are no such residues in this entry.

5.8 Polymer linkage issues [i](#)

There are no chain breaks in this entry.

6 Fit of model and data [i](#)

6.1 Protein, DNA and RNA chains [i](#)

In the following table, the column labelled ‘#RSRZ > 2’ contains the number (and percentage) of RSRZ outliers, followed by percent RSRZ outliers for the chain as percentile scores relative to all X-ray entries and entries of similar resolution. The OWAB column contains the minimum, median, 95th percentile and maximum values of the occupancy-weighted average B-factor per residue. The column labelled ‘Q < 0.9’ lists the number of (and percentage) of residues with an average occupancy less than 0.9.

Mol	Chain	Analysed	<RSRZ>	#RSRZ>2	OWAB(Å ²)	Q<0.9
1	A	623/641 (97%)	0.15	40 (6%) 19 22	43, 77, 135, 192	0
2	B	339/339 (100%)	-0.08	7 (2%) 63 70	39, 58, 82, 145	0
3	G	58/71 (81%)	-0.25	2 (3%) 45 50	48, 66, 113, 120	0
All	All	1020/1051 (97%)	0.05	49 (4%) 30 34	39, 67, 125, 192	0

All (49) RSRZ outliers are listed below:

Mol	Chain	Res	Type	RSRZ
1	A	409	MET	5.4
2	B	129	ARG	5.4
1	A	394	HIS	4.2
1	A	395	LYS	4.1
1	A	474	ARG	4.0
1	A	359	PRO	3.7
1	A	507	ARG	3.4
1	A	318	LEU	3.3
2	B	130	GLU	3.1
1	A	415	ASP	3.1
1	A	408	THR	3.0
1	A	363	GLN	3.0
1	A	593	GLU	3.0
1	A	545	LYS	2.9
1	A	549	HIS	2.8
1	A	505	LEU	2.8
1	A	498	LEU	2.8
1	A	473	PRO	2.8
1	A	99	GLU	2.7
1	A	405	MET	2.7
1	A	334	SER	2.7
1	A	397	LYS	2.7
1	A	435	ARG	2.6

Continued on next page...

Continued from previous page...

Mol	Chain	Res	Type	RSRZ
2	B	233[A]	CYS	2.5
1	A	348	HIS	2.5
1	A	613	GLN	2.4
1	A	364	LYS	2.3
1	A	355	GLY	2.3
1	A	627	GLY	2.3
3	G	52	THR	2.3
1	A	380	MET	2.3
1	A	271	LEU	2.3
1	A	376	SER	2.3
1	A	377	LEU	2.3
1	A	189	ASN	2.2
3	G	7	ALA	2.2
1	A	550	GLU	2.1
1	A	285	GLN	2.1
1	A	404	ARG	2.1
2	B	61	MET	2.1
1	A	120	CYS	2.1
1	A	551	GLU	2.1
2	B	318	LEU	2.0
2	B	42	ARG	2.0
1	A	365	GLY	2.0
1	A	416	SER	2.0
1	A	399	LYS	2.0
2	B	60	ALA	2.0
1	A	393	GLN	2.0

6.2 Non-standard residues in protein, DNA, RNA chains [\(i\)](#)

There are no non-standard protein/DNA/RNA residues in this entry.

6.3 Carbohydrates [\(i\)](#)

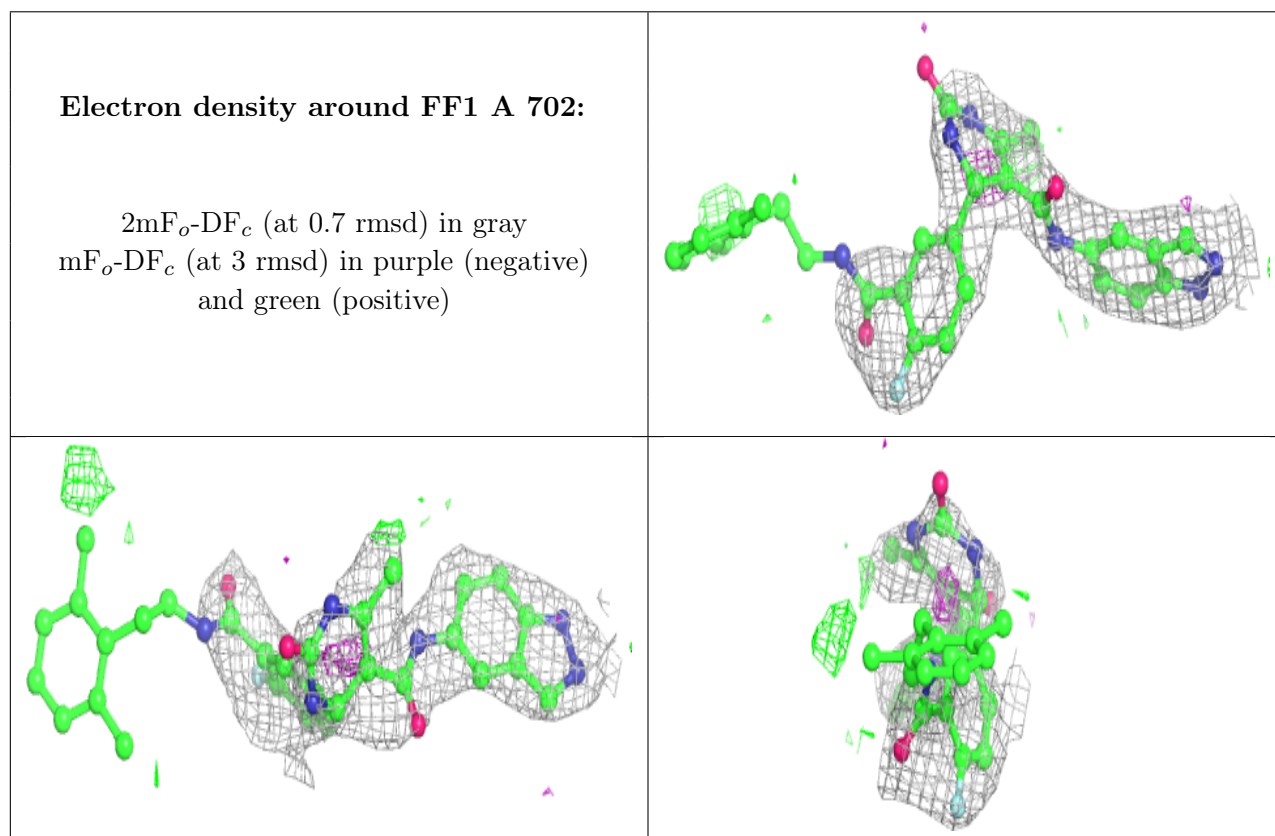
There are no monosaccharides in this entry.

6.4 Ligands [\(i\)](#)

In the following table, the Atoms column lists the number of modelled atoms in the group and the number defined in the chemical component dictionary. The B-factors column lists the minimum, median, 95th percentile and maximum values of B factors of atoms in the group. The column labelled 'Q< 0.9' lists the number of atoms with occupancy less than 0.9.

Mol	Type	Chain	Res	Atoms	RSCC	RSR	B-factors(\AA^2)	Q<0.9
4	MG	A	701	1/1	0.83	0.21	99,99,99,99	0
5	FF1	A	702	40/40	0.83	0.31	62,119,163,168	0

The following is a graphical depiction of the model fit to experimental electron density of all instances of the Ligand of Interest. In addition, ligands with molecular weight > 250 and outliers as shown on the geometry validation Tables will also be included. Each fit is shown from different orientation to approximate a three-dimensional view.



6.5 Other polymers [i](#)

There are no such residues in this entry.