



## Full wwPDB EM Validation Report ⓘ

Nov 19, 2022 – 10:59 am GMT

PDB ID : 5M5X  
EMDB ID : EMD-3447  
Title : RNA Polymerase I elongation complex 1  
Authors : Tafur, L.; Sadian, Y.; Hoffmann, N.A.; Jakobi, A.J.; Wetzel, R.; Hagen, W.J.H.; Sachse, C.; Muller, C.W.  
Deposited on : 2016-10-23  
Resolution : 4.00 Å(reported)

This is a Full wwPDB EM Validation Report for a publicly released PDB entry.

We welcome your comments at [validation@mail.wwpdb.org](mailto:validation@mail.wwpdb.org)

A user guide is available at

<https://www.wwpdb.org/validation/2017/EMValidationReportHelp>

with specific help available everywhere you see the ⓘ symbol.

The types of validation reports are described at

<http://www.wwpdb.org/validation/2017/FAQs#types>.

---

The following versions of software and data (see [references ⓘ](#)) were used in the production of this report:

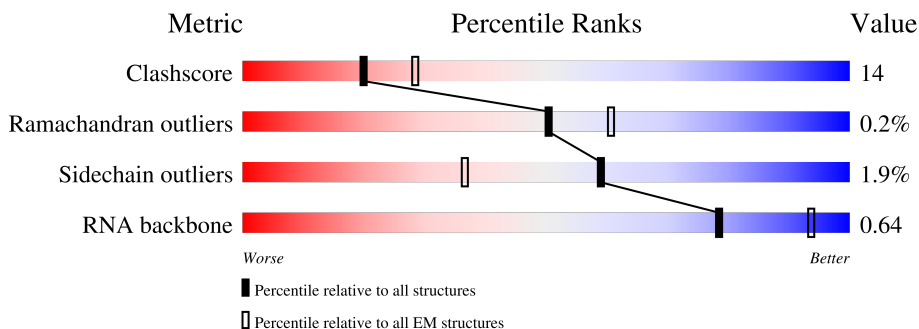
EMDB validation analysis : 0.0.1.dev43  
MolProbity : 4.02b-467  
Percentile statistics : 20191225.v01 (using entries in the PDB archive December 25th 2019)  
MapQ : 1.9.9  
Ideal geometry (proteins) : Engh & Huber (2001)  
Ideal geometry (DNA, RNA) : Parkinson et al. (1996)  
Validation Pipeline (wwPDB-VP) : 2.31.2

# 1 Overall quality at a glance

The following experimental techniques were used to determine the structure:  
*ELECTRON MICROSCOPY*

The reported resolution of this entry is 4.00 Å.

Percentile scores (ranging between 0-100) for global validation metrics of the entry are shown in the following graphic. The table shows the number of entries on which the scores are based.



Metric	Whole archive (#Entries)	EM structures (#Entries)
Clashscore	158937	4297
Ramachandran outliers	154571	4023
Sidechain outliers	154315	3826
RNA backbone	4643	859

The table below summarises the geometric issues observed across the polymeric chains and their fit to the map. The red, orange, yellow and green segments of the bar indicate the fraction of residues that contain outliers for  $\geq 3$ , 2, 1 and 0 types of geometric quality criteria respectively. A grey segment represents the fraction of residues that are not modelled. The numeric value for each fraction is indicated below the corresponding segment, with a dot representing fractions  $\leq 5\%$ . The upper red bar (where present) indicates the fraction of residues that have poor fit to the EM map (all-atom inclusion  $< 40\%$ ). The numeric value is given above the bar.

Mol	Chain	Length	Quality of chain
1	A	1664	
2	B	1203	
3	C	335	
4	D	137	
5	E	215	
6	F	155	
7	G	326	

Continued on next page...

Continued from previous page...

Mol	Chain	Length	Quality of chain
8	H	146	
9	I	125	
10	J	70	
11	K	142	
12	L	70	
13	M	415	
14	N	233	
15	R	20	
16	S	38	
17	T	38	

## 2 Entry composition [i](#)

There are 18 unique types of molecules in this entry. The entry contains 34491 atoms, of which 0 are hydrogens and 0 are deuteriums.

In the tables below, the AltConf column contains the number of residues with at least one atom in alternate conformation and the Trace column contains the number of residues modelled with at most 2 atoms.

- Molecule 1 is a protein called DNA-directed RNA polymerase I subunit RPA190.

Mol	Chain	Residues	Atoms					AltConf	Trace
			Total	C	N	O	S		
1	A	1455	11488	7259	1998	2169	62	0	0

- Molecule 2 is a protein called DNA-directed RNA polymerase I subunit RPA135.

Mol	Chain	Residues	Atoms					AltConf	Trace
			Total	C	N	O	S		
2	B	1170	9301	5888	1625	1737	51	0	0

- Molecule 3 is a protein called DNA-directed RNA polymerases I and III subunit RPAC1.

Mol	Chain	Residues	Atoms					AltConf	Trace
			Total	C	N	O	S		
3	C	304	2418	1536	414	460	8	0	0

- Molecule 4 is a protein called DNA-directed RNA polymerase I subunit RPA14.

Mol	Chain	Residues	Atoms				AltConf	Trace
			Total	C	N	O		
4	D	59	467	293	80	94	0	0

- Molecule 5 is a protein called DNA-directed RNA polymerases I, II, and III subunit RPABC1.

Mol	Chain	Residues	Atoms					AltConf	Trace
			Total	C	N	O	S		
5	E	214	1751	1111	309	320	11	0	0

- Molecule 6 is a protein called DNA-directed RNA polymerases I, II, and III subunit RPABC2.

Mol	Chain	Residues	Atoms					AltConf	Trace
			Total	C	N	O	S		
6	F	100	823	522	144	154	3	0	0

- Molecule 7 is a protein called DNA-directed RNA polymerase I subunit RPA43.

Mol	Chain	Residues	Atoms					AltConf	Trace
			Total	C	N	O	S		
7	G	187	Total	C	N	O	S	0	0
			1486	959	255	267	5		

- Molecule 8 is a protein called DNA-directed RNA polymerases I, II, and III subunit RPABC3.

Mol	Chain	Residues	Atoms					AltConf	Trace
			Total	C	N	O	S		
8	H	134	Total	C	N	O	S	0	0
			1075	677	182	212	4		

- Molecule 9 is a protein called DNA-directed RNA polymerase I subunit RPA12.

Mol	Chain	Residues	Atoms					AltConf	Trace
			Total	C	N	O	S		
9	I	64	Total	C	N	O	S	0	0
			472	295	78	95	4		

- Molecule 10 is a protein called DNA-directed RNA polymerases I, II, and III subunit RPABC5.

Mol	Chain	Residues	Atoms					AltConf	Trace
			Total	C	N	O	S		
10	J	69	Total	C	N	O	S	0	0
			569	362	101	100	6		

- Molecule 11 is a protein called DNA-directed RNA polymerases I and III subunit RPAC2.

Mol	Chain	Residues	Atoms					AltConf	Trace
			Total	C	N	O	S		
11	K	100	Total	C	N	O	S	0	0
			785	491	129	160	5		

- Molecule 12 is a protein called DNA-directed RNA polymerases I, II, and III subunit RPABC4.

Mol	Chain	Residues	Atoms					AltConf	Trace
			Total	C	N	O	S		
12	L	43	Total	C	N	O	S	0	0
			344	211	69	60	4		

- Molecule 13 is a protein called DNA-directed RNA polymerase I subunit RPA49.

Mol	Chain	Residues	Atoms				AltConf	Trace
			Total	C	N	O		
13	M	101	Total	C	N	O	0	0
			802	508	132	162		

- Molecule 14 is a protein called DNA-directed RNA polymerase I subunit RPA34.

Mol	Chain	Residues	Atoms					AltConf	Trace
14	N	135	Total	C	N	O	S	0	0
			1070	685	175	206	4		

- Molecule 15 is a RNA chain called RNA.

Mol	Chain	Residues	Atoms					AltConf	Trace
15	R	13	Total	C	N	O	P	0	0
			281	126	56	86	13		

- Molecule 16 is a DNA chain called Non-template DNA.

Mol	Chain	Residues	Atoms					AltConf	Trace
16	S	28	Total	C	N	O	P	0	0
			579	276	108	167	28		

- Molecule 17 is a DNA chain called Template DNA.

Mol	Chain	Residues	Atoms					AltConf	Trace
17	T	38	Total	C	N	O	P	0	0
			774	370	137	229	38		

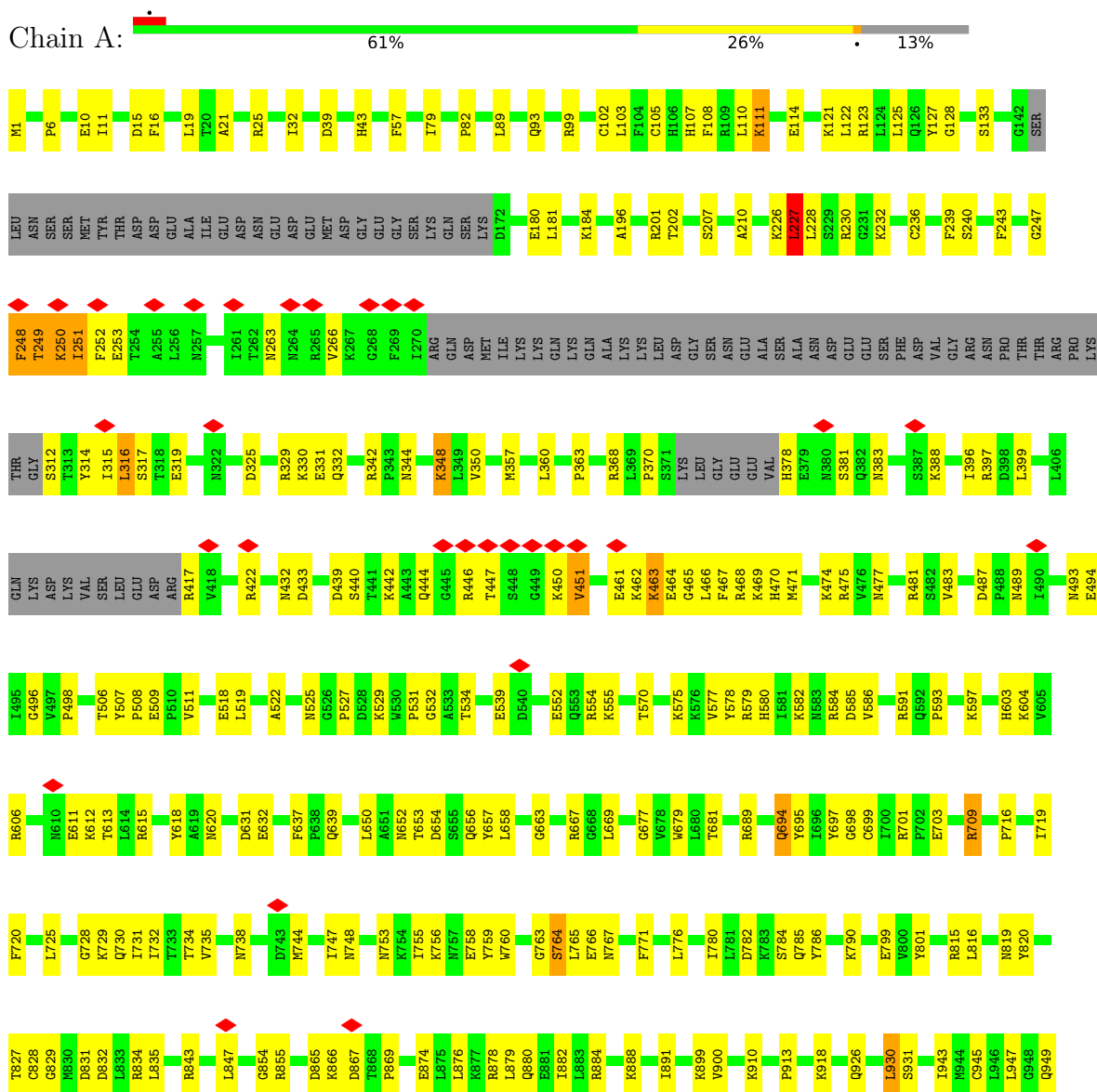
- Molecule 18 is ZINC ION (three-letter code: ZN) (formula: Zn).

Mol	Chain	Residues	Atoms		AltConf
18	A	2	Total	Zn	0
			2	2	
18	B	1	Total	Zn	0
			1	1	
18	I	1	Total	Zn	0
			1	1	
18	J	1	Total	Zn	0
			1	1	
18	L	1	Total	Zn	0
			1	1	

### 3 Residue-property plots [i](#)

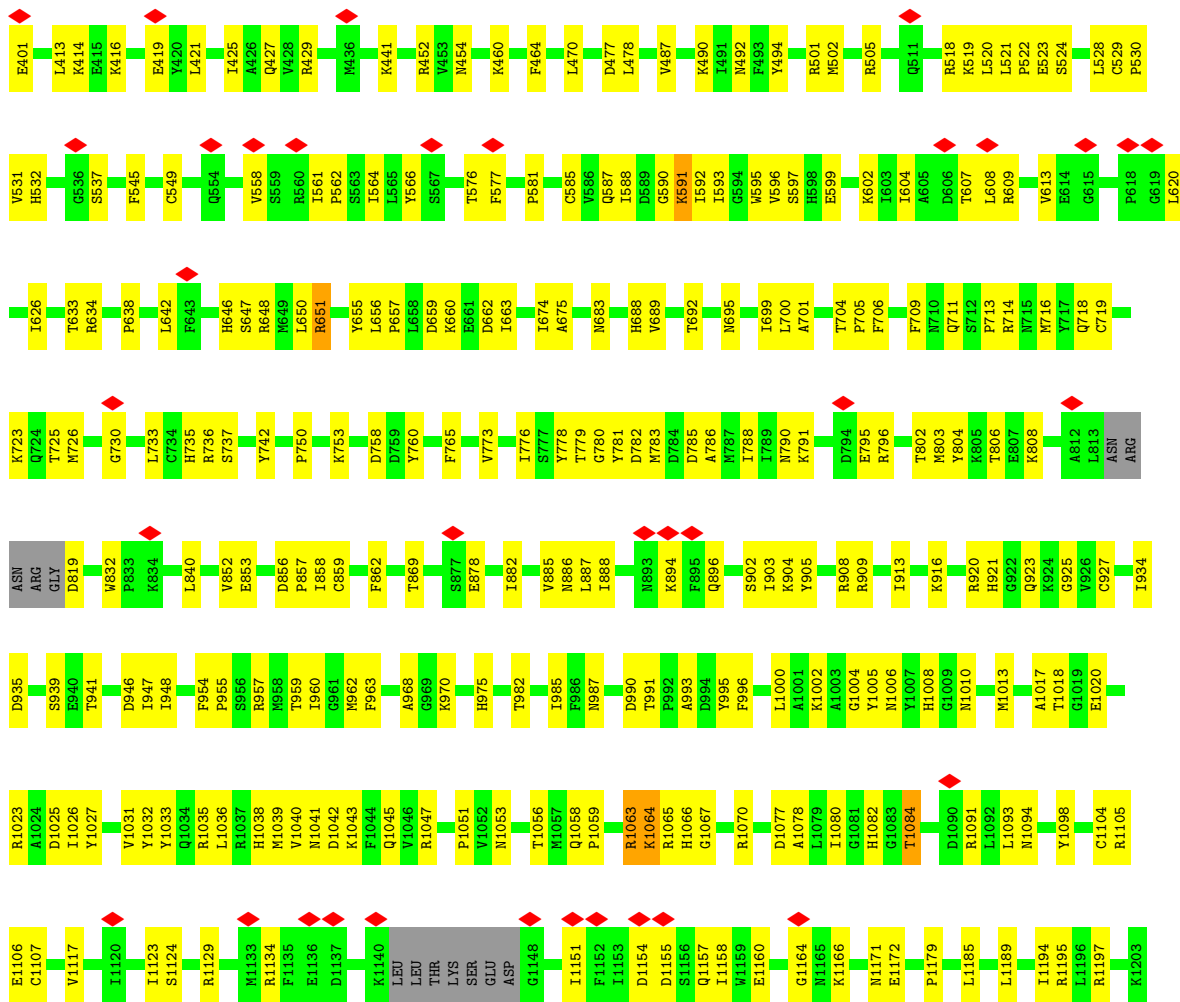
These plots are drawn for all protein, RNA, DNA and oligosaccharide chains in the entry. The first graphic for a chain summarises the proportions of the various outlier classes displayed in the second graphic. The second graphic shows the sequence view annotated by issues in geometry and atom inclusion in map density. Residues are color-coded according to the number of geometric quality criteria for which they contain at least one outlier: green = 0, yellow = 1, orange = 2 and red = 3 or more. A red diamond above a residue indicates a poor fit to the EM map for this residue (all-atom inclusion < 40%). Stretches of 2 or more consecutive residues without any outlier are shown as a green connector. Residues present in the sample, but not in the model, are shown in grey.

- Molecule 1: DNA-directed RNA polymerase I subunit RPA190

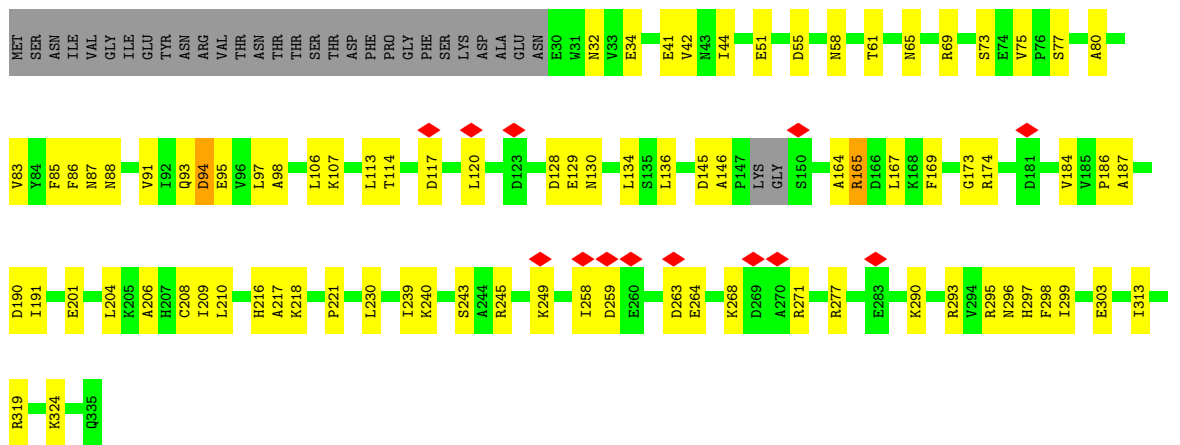




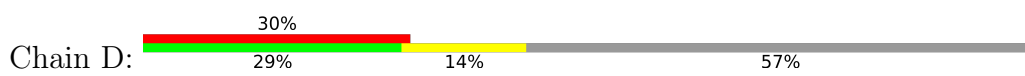


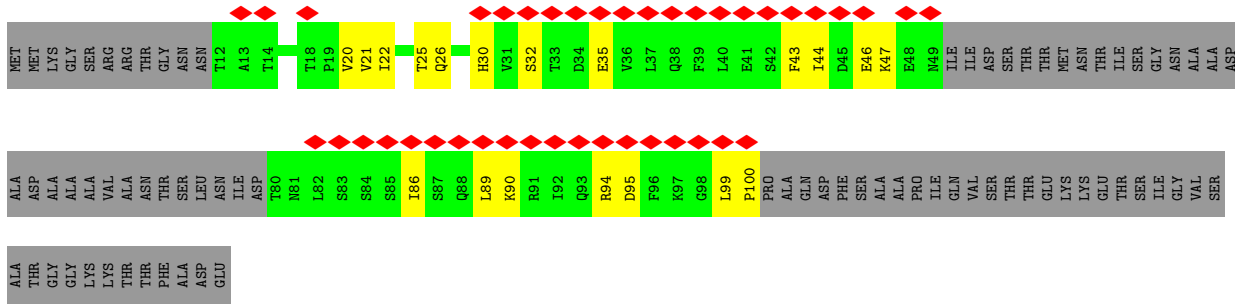


● Molecule 3: DNA-directed RNA polymerases I and III subunit RPAC1

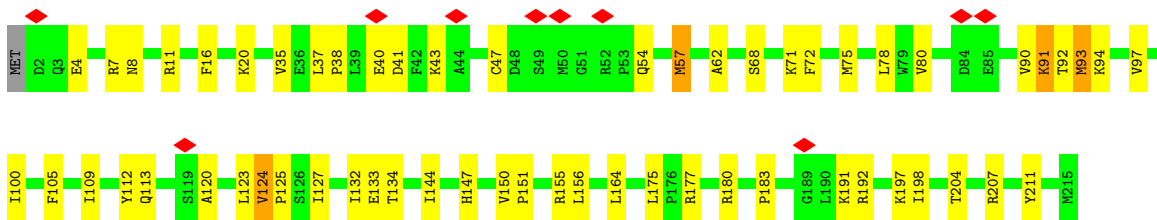
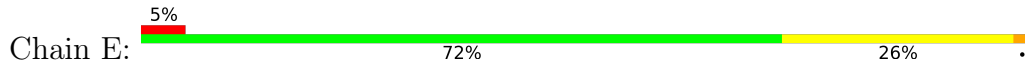


● Molecule 4: DNA-directed RNA polymerase I subunit RPA14

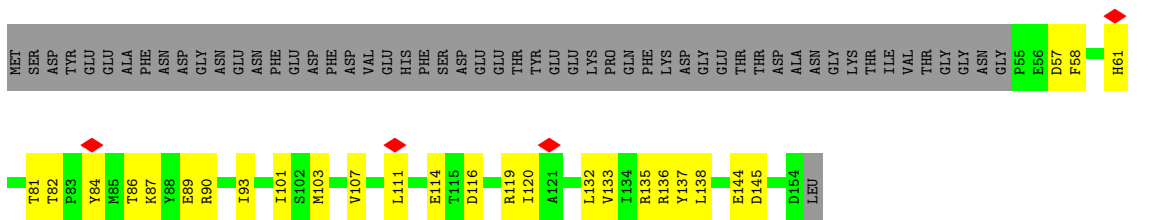




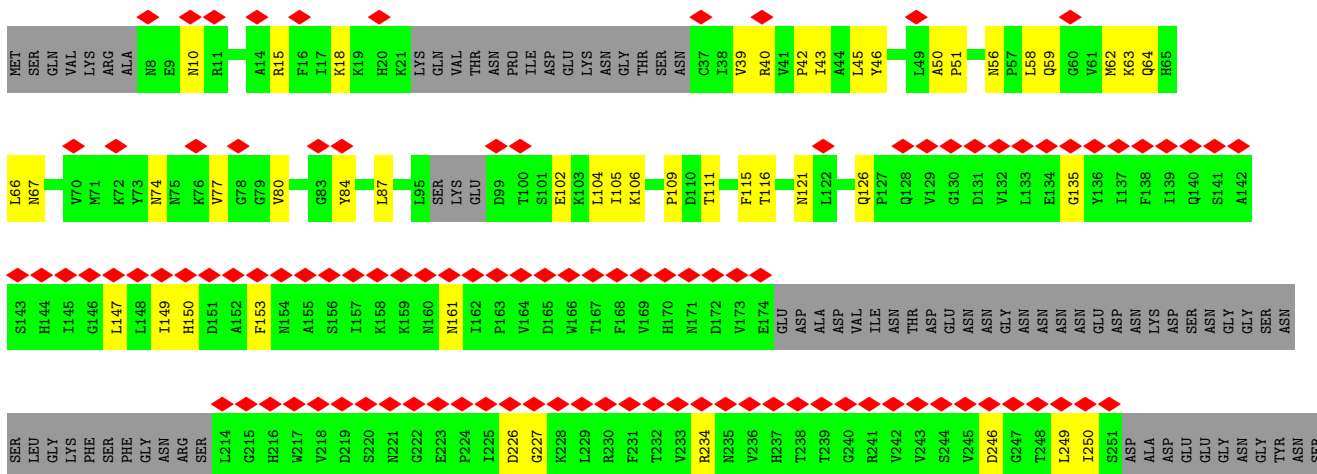
• Molecule 5: DNA-directed RNA polymerases I, II, and III subunit RPABC1

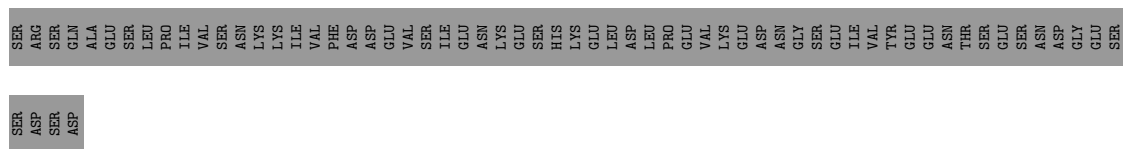


• Molecule 6: DNA-directed RNA polymerases I, II, and III subunit RPABC2

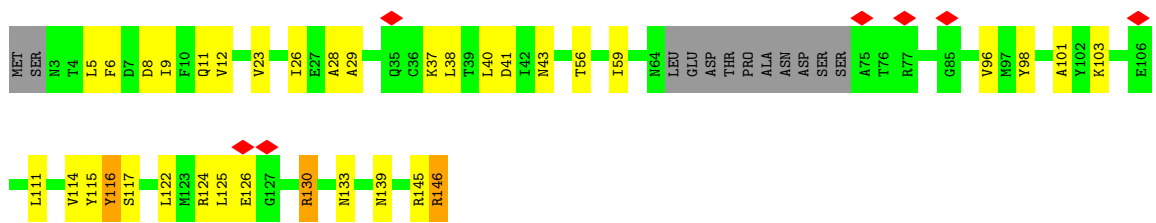


• Molecule 7: DNA-directed RNA polymerase I subunit RPA43

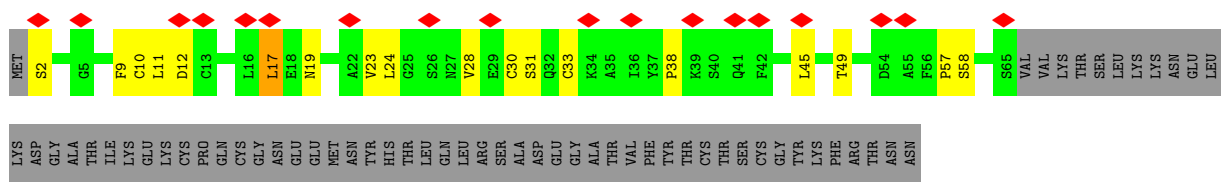
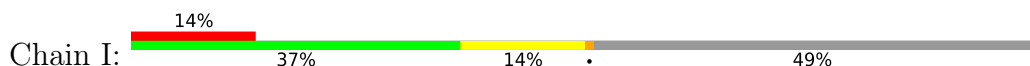




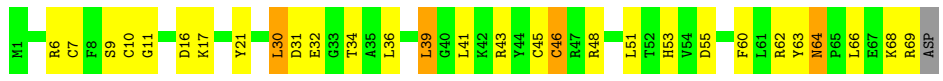
• Molecule 8: DNA-directed RNA polymerases I, II, and III subunit RPABC3



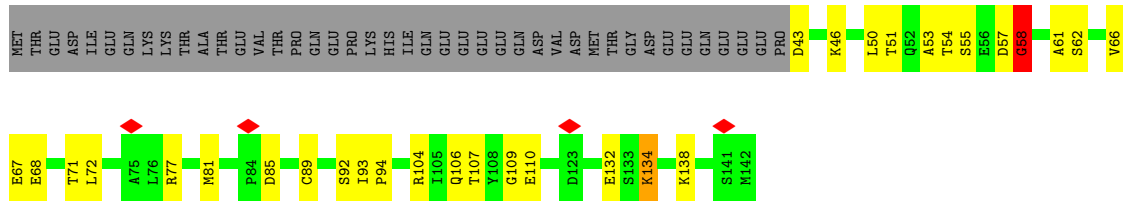
• Molecule 9: DNA-directed RNA polymerase I subunit RPA12



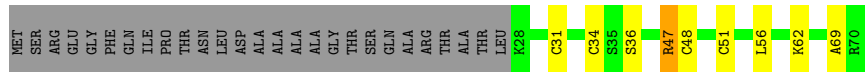
• Molecule 10: DNA-directed RNA polymerases I, II, and III subunit RPABC5



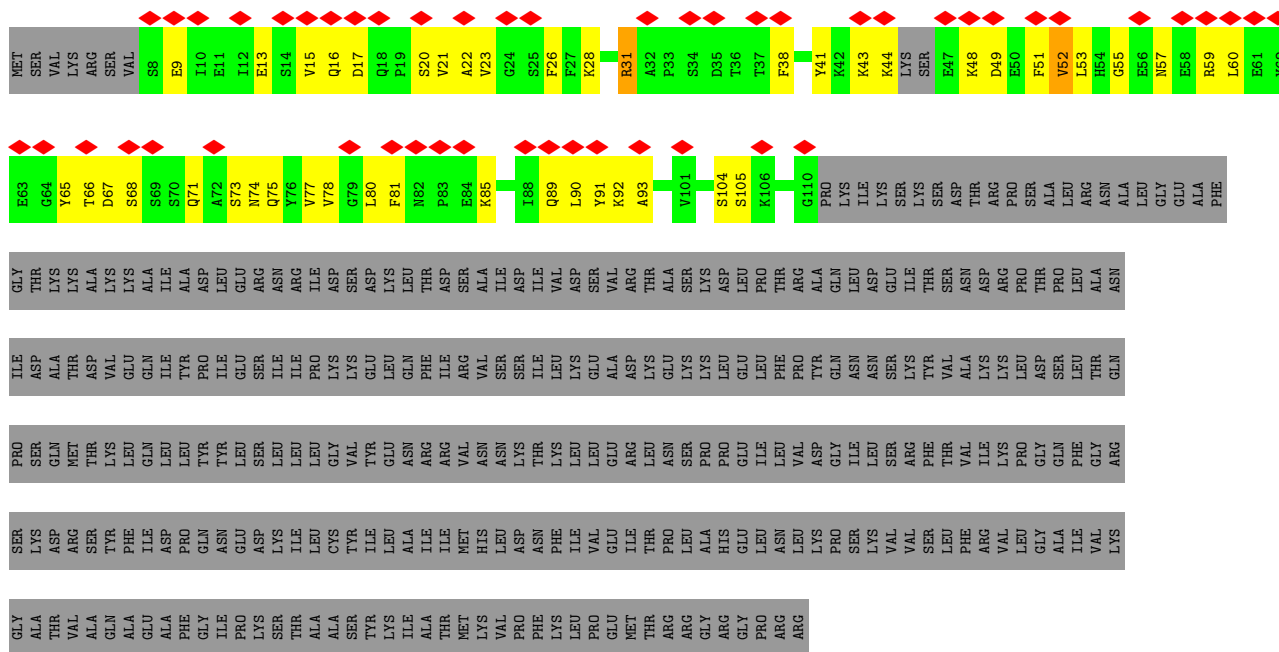
• Molecule 11: DNA-directed RNA polymerases I and III subunit RPAC2



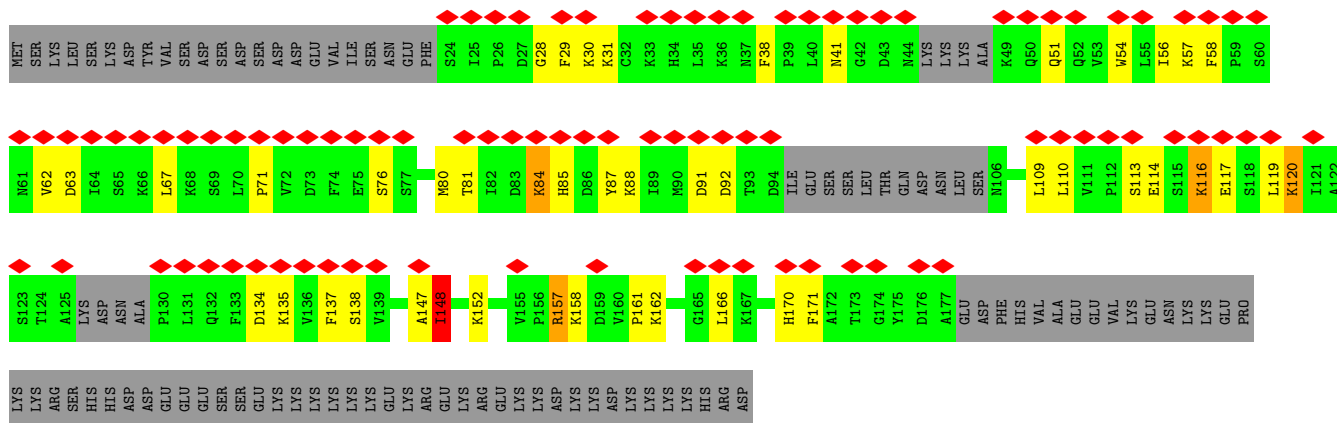
• Molecule 12: DNA-directed RNA polymerases I, II, and III subunit RPABC4



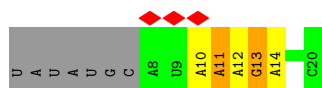
• Molecule 13: DNA-directed RNA polymerase I subunit RPA49



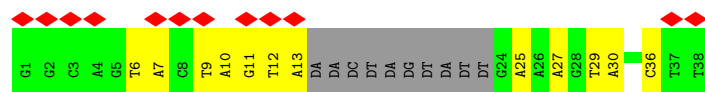
• Molecule 14: DNA-directed RNA polymerase I subunit RPA34



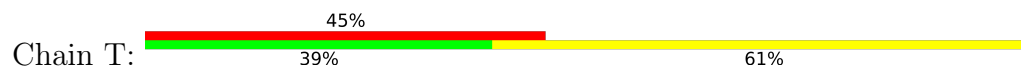
• Molecule 15: RNA



• Molecule 16: Non-template DNA



• Molecule 17: Template DNA



## 4 Experimental information

Property	Value	Source
EM reconstruction method	SINGLE PARTICLE	Depositor
Imposed symmetry	POINT, C1	Depositor
Number of particles used	83787	Depositor
Resolution determination method	FSC 0.143 CUT-OFF	Depositor
CTF correction method	PHASE FLIPPING AND AMPLITUDE CORRECTION	Depositor
Microscope	FEI TITAN KRIOS	Depositor
Voltage (kV)	300	Depositor
Electron dose ( $e^-/\text{\AA}^2$ )	40	Depositor
Minimum defocus (nm)	Not provided	
Maximum defocus (nm)	Not provided	
Magnification	Not provided	
Image detector	GATAN K2 SUMMIT (4k x 4k)	Depositor
Maximum map value	0.236	Depositor
Minimum map value	-0.167	Depositor
Average map value	0.001	Depositor
Map value standard deviation	0.009	Depositor
Recommended contour level	0.03	Depositor
Map size (Å)	270.0, 270.0, 270.0	wwPDB
Map dimensions	200, 200, 200	wwPDB
Map angles (°)	90.0, 90.0, 90.0	wwPDB
Pixel spacing (Å)	1.35, 1.35, 1.35	Depositor

## 5 Model quality i

### 5.1 Standard geometry i

Bond lengths and bond angles in the following residue types are not validated in this section:  
ZN

The Z score for a bond length (or angle) is the number of standard deviations the observed value is removed from the expected value. A bond length (or angle) with  $|Z| > 5$  is considered an outlier worth inspection. RMSZ is the root-mean-square of all Z scores of the bond lengths (or angles).

Mol	Chain	Bond lengths		Bond angles	
		RMSZ	# Z  >5	RMSZ	# Z  >5
1	A	0.24	1/11698 (0.0%)	0.44	3/15798 (0.0%)
2	B	0.24	1/9506 (0.0%)	0.45	3/12847 (0.0%)
3	C	0.24	0/2469	0.42	0/3347
4	D	0.22	0/473	0.41	0/641
5	E	0.24	0/1787	0.39	0/2406
6	F	0.23	0/838	0.39	0/1129
7	G	0.23	0/1521	0.42	0/2067
8	H	0.24	0/1093	0.47	0/1480
9	I	0.24	0/478	0.46	0/647
10	J	0.23	0/578	0.43	0/775
11	K	0.54	3/795 (0.4%)	0.81	3/1072 (0.3%)
12	L	0.22	0/346	0.40	0/457
13	M	0.25	0/816	0.47	0/1095
14	N	0.24	0/1090	0.54	1/1466 (0.1%)
15	R	0.12	0/315	0.64	0/489
16	S	0.44	0/649	0.87	0/998
17	T	0.44	0/866	0.89	0/1333
All	All	0.26	5/35318 (0.0%)	0.49	10/48047 (0.0%)

Chiral center outliers are detected by calculating the chiral volume of a chiral center and verifying if the center is modelled as a planar moiety or with the opposite hand. A planarity outlier is detected by checking planarity of atoms in a peptide group, atoms in a mainchain group or atoms of a sidechain that are expected to be planar.

Mol	Chain	#Chirality outliers	#Planarity outliers
11	K	0	1

All (5) bond length outliers are listed below:

Mol	Chain	Res	Type	Atoms	Z	Observed(Å)	Ideal(Å)
11	K	57	ASP	N-CA	9.73	1.65	1.46

*Continued on next page...*

Continued from previous page...

Mol	Chain	Res	Type	Atoms	Z	Observed(Å)	Ideal(Å)
11	K	58	GLY	CA-C	-8.01	1.39	1.51
1	A	763	GLY	N-CA	6.47	1.55	1.46
11	K	57	ASP	CA-CB	5.88	1.66	1.53
2	B	1064	LYS	N-CA	5.18	1.56	1.46

All (10) bond angle outliers are listed below:

Mol	Chain	Res	Type	Atoms	Z	Observed(°)	Ideal(°)
11	K	57	ASP	N-CA-C	-13.91	73.44	111.00
11	K	57	ASP	CB-CA-C	-12.25	85.90	110.40
2	B	1064	LYS	N-CA-C	-12.04	78.50	111.00
1	A	763	GLY	N-CA-C	-8.98	90.65	113.10
11	K	57	ASP	N-CA-CB	-8.30	95.66	110.60
1	A	764	SER	N-CA-C	-7.66	90.32	111.00
2	B	1064	LYS	CB-CA-C	-7.12	96.17	110.40
1	A	867	ASP	C-N-CA	-5.40	108.19	121.70
14	N	148	ILE	N-CA-C	5.28	125.25	111.00
2	B	1154	ASP	CB-CG-OD2	5.19	122.97	118.30

There are no chirality outliers.

All (1) planarity outliers are listed below:

Mol	Chain	Res	Type	Group
11	K	58	GLY	Mainchain

## 5.2 Too-close contacts [i](#)

In the following table, the Non-H and H(model) columns list the number of non-hydrogen atoms and hydrogen atoms in the chain respectively. The H(added) column lists the number of hydrogen atoms added and optimized by MolProbity. The Clashes column lists the number of clashes within the asymmetric unit, whereas Symm-Clashes lists symmetry-related clashes.

Mol	Chain	Non-H	H(model)	H(added)	Clashes	Symm-Clashes
1	A	11488	0	11571	377	0
2	B	9301	0	9194	310	0
3	C	2418	0	2401	64	0
4	D	467	0	468	16	0
5	E	1751	0	1776	38	0
6	F	823	0	841	24	0
7	G	1486	0	1488	37	0
8	H	1075	0	1046	25	0

Continued on next page...



Continued from previous page...

Mol	Chain	Non-H	H(model)	H(added)	Clashes	Symm-Clashes
9	I	472	0	473	13	0
10	J	569	0	585	23	0
11	K	785	0	782	28	0
12	L	344	0	363	7	0
13	M	802	0	787	37	0
14	N	1070	0	1085	43	0
15	R	281	0	143	3	0
16	S	579	0	318	9	0
17	T	774	0	430	23	0
18	A	2	0	0	0	0
18	B	1	0	0	0	0
18	I	1	0	0	0	0
18	J	1	0	0	0	0
18	L	1	0	0	0	0
All	All	34491	0	33751	940	0

The all-atom clashscore is defined as the number of clashes found per 1000 atoms (including hydrogen atoms). The all-atom clashscore for this structure is 14.

All (940) close contacts within the same asymmetric unit are listed below, sorted by their clash magnitude.

Atom-1	Atom-2	Interatomic distance (Å)	Clash overlap (Å)
1:A:250:LYS:NZ	1:A:314:TYR:HE2	1.28	1.29
1:A:250:LYS:CE	1:A:314:TYR:HE2	1.49	1.25
1:A:250:LYS:HG3	1:A:252:PHE:CE1	1.77	1.18
1:A:250:LYS:NZ	1:A:314:TYR:CE2	2.04	1.17
1:A:250:LYS:CG	1:A:252:PHE:CE1	2.29	1.14
1:A:250:LYS:CE	1:A:314:TYR:CE2	2.33	1.11
2:B:17:ARG:NH1	2:B:758:ASP:OD2	1.85	1.09
1:A:250:LYS:HD2	1:A:314:TYR:CD2	1.92	1.04
1:A:250:LYS:CG	1:A:252:PHE:HE1	1.68	1.03
1:A:1105:ARG:NH1	1:A:1138:GLU:OE2	1.91	1.02
1:A:1473:LYS:NZ	1:A:1475:GLU:OE2	1.93	1.00
1:A:248:PHE:HD1	1:A:442:LYS:HG2	1.28	0.97
1:A:250:LYS:HG2	1:A:252:PHE:CE1	2.00	0.97
10:J:10:CYS:HB3	10:J:45:CYS:SG	2.06	0.96
1:A:250:LYS:HG2	1:A:252:PHE:HE1	1.32	0.92
2:B:1063:ARG:HA	2:B:1067:GLY:H	1.33	0.91
1:A:1302:TYR:OH	1:A:1310:LYS:NZ	2.04	0.90
2:B:335:ARG:NH1	2:B:344:GLN:OE1	2.04	0.90
2:B:1042:ASP:O	2:B:1063:ARG:NH1	2.03	0.90

Continued on next page...

*Continued from previous page...*

Atom-1	Atom-2	Interatomic distance (Å)	Clash overlap (Å)
12:L:47:ARG:NH1	12:L:48:CYS:O	2.04	0.90
1:A:250:LYS:O	1:A:251:ILE:C	2.10	0.90
2:B:28:PRO:HD3	10:J:62:ARG:HH12	1.36	0.89
1:A:15:ASP:OD2	2:B:1197:ARG:NH1	2.06	0.88
2:B:419:GLU:OE1	2:B:460:LYS:NZ	2.08	0.87
3:C:218:LYS:NZ	12:L:69:ALA:O	2.06	0.86
9:I:33:CYS:SG	13:M:59:ARG:NH1	2.50	0.84
2:B:711:GLN:HG2	2:B:713:PRO:HD2	1.60	0.84
1:A:248:PHE:O	1:A:249:THR:OG1	1.95	0.83
2:B:64:GLY:O	2:B:414:LYS:NZ	2.11	0.83
3:C:58:ASN:HA	3:C:296:ASN:HB3	1.60	0.81
1:A:250:LYS:HD2	1:A:314:TYR:CE2	2.15	0.81
4:D:47:LYS:NZ	7:G:67:ASN:OD1	2.14	0.80
1:A:1559:ARG:HH11	1:A:1587:ASP:HB2	1.47	0.80
2:B:750:PRO:HB3	2:B:920:ARG:HH12	1.45	0.80
2:B:1104:CYS:HB3	2:B:1107:CYS:SG	2.23	0.79
1:A:760:TRP:HB2	1:A:764:SER:CB	2.13	0.78
2:B:806:THR:OG1	2:B:904:LYS:NZ	2.17	0.78
1:A:250:LYS:HE3	1:A:314:TYR:HE2	1.48	0.78
1:A:1608:SER:O	1:A:1612:LYS:NZ	2.16	0.78
1:A:250:LYS:CD	1:A:314:TYR:CE2	2.66	0.78
1:A:247:GLY:O	1:A:248:PHE:HB2	1.83	0.78
1:A:250:LYS:HG3	1:A:252:PHE:CD1	2.18	0.77
1:A:579:ARG:HD2	1:A:582:LYS:HE2	1.65	0.77
4:D:95:ASP:OD2	7:G:150:HIS:ND1	2.17	0.76
2:B:562:PRO:HG3	2:B:591:LYS:HZ1	1.51	0.75
1:A:250:LYS:HE3	1:A:314:TYR:CE2	2.20	0.75
5:E:71:LYS:NZ	5:E:156:LEU:O	2.17	0.75
1:A:913:PRO:HB3	1:A:926:GLN:HE22	1.50	0.74
1:A:325:ASP:HB3	1:A:329:ARG:HH12	1.50	0.74
1:A:843:ARG:HH21	1:A:945:CYS:HA	1.52	0.74
2:B:258:VAL:HG13	2:B:305:ARG:HH12	1.53	0.74
1:A:123:ARG:HH12	1:A:127:TYR:HE2	1.35	0.74
1:A:518:GLU:OE2	1:A:582:LYS:NZ	2.19	0.74
14:N:147:ALA:O	14:N:148:ILE:HG22	1.87	0.74
2:B:67:ASP:OD2	2:B:364:LYS:NZ	2.21	0.74
1:A:180:GLU:OE1	1:A:184:LYS:NZ	2.21	0.73
3:C:69:ARG:HG2	11:K:71:THR:HG22	1.71	0.73
1:A:760:TRP:HB2	1:A:764:SER:HB3	1.71	0.73
1:A:1274:GLU:OE2	1:A:1288:ARG:NH2	2.20	0.73
13:M:81:PHE:HB3	14:N:54:TRP:HE1	1.54	0.73

*Continued on next page...*

*Continued from previous page...*

Atom-1	Atom-2	Interatomic distance (Å)	Clash overlap (Å)
1:A:1318:SER:HB2	1:A:1446:ARG:HH22	1.53	0.73
1:A:1446:ARG:HH12	1:A:1450:ILE:HD11	1.54	0.73
1:A:250:LYS:CD	1:A:314:TYR:CD2	2.69	0.72
1:A:1314:GLN:HE21	1:A:1446:ARG:HE	1.35	0.72
1:A:760:TRP:CB	1:A:764:SER:HB3	2.21	0.71
2:B:1104:CYS:CB	2:B:1107:CYS:SG	2.78	0.71
5:E:124:VAL:HG23	5:E:125:PRO:HD3	1.72	0.71
2:B:322:ASN:HD22	13:M:105:SER:HA	1.53	0.71
2:B:588:ILE:HD12	2:B:591:LYS:NZ	2.06	0.71
2:B:1025:ASP:OD1	3:C:277:ARG:NH1	2.23	0.71
1:A:1260:LYS:HE3	1:A:1505:ASP:HA	1.73	0.71
1:A:865:ASP:O	1:A:866:LYS:CG	2.39	0.70
1:A:462:LYS:HG3	1:A:463:LYS:H	1.56	0.70
2:B:719:CYS:SG	2:B:723:LYS:NZ	2.65	0.70
1:A:597:LYS:NZ	1:A:656:GLN:HE22	1.91	0.69
2:B:53:THR:HG21	2:B:169:ARG:NH1	2.08	0.69
2:B:675:ALA:HB3	2:B:689:VAL:HG12	1.76	0.68
1:A:1592:GLN:HB2	1:A:1596:LEU:HD11	1.76	0.68
2:B:858:ILE:HD11	2:B:903:ILE:HG21	1.75	0.68
1:A:1:MET:SD	2:B:1094:ASN:ND2	2.67	0.68
2:B:128:GLN:HE21	2:B:735:HIS:HA	1.59	0.68
14:N:56:ILE:HG22	14:N:137:PHE:HB2	1.76	0.68
5:E:71:LYS:HZ3	5:E:156:LEU:C	1.97	0.68
8:H:56:THR:HB	8:H:145:ARG:HB2	1.74	0.68
1:A:1039:ARG:HB3	1:A:1045:LEU:HD13	1.75	0.67
1:A:760:TRP:O	1:A:764:SER:OG	2.13	0.67
2:B:218:ILE:HG22	2:B:232:TYR:HA	1.77	0.67
1:A:325:ASP:HB3	1:A:329:ARG:NH1	2.10	0.66
1:A:831:ASP:HA	1:A:834:ARG:HE	1.60	0.66
2:B:17:ARG:HG3	2:B:20:GLU:HB2	1.78	0.66
2:B:110:ASN:HB2	2:B:119:ARG:H	1.60	0.66
2:B:646:HIS:CD2	2:B:647:SER:H	2.14	0.66
2:B:490:LYS:HG3	2:B:736:ARG:NH1	2.11	0.66
1:A:637:PHE:O	2:B:1091:ARG:NH2	2.28	0.66
2:B:186:GLU:HB3	2:B:189:GLU:HB2	1.77	0.66
1:A:506:THR:HA	1:A:580:HIS:HA	1.78	0.66
2:B:1047:ARG:NH2	2:B:1051:PRO:O	2.29	0.66
1:A:316:LEU:HD13	1:A:317:SER:H	1.61	0.65
1:A:462:LYS:HE2	1:A:469:LYS:HE2	1.78	0.65
2:B:935:ASP:OD1	3:C:69:ARG:NH1	2.29	0.65
2:B:726:MET:HG3	2:B:742:TYR:HB3	1.78	0.65

*Continued on next page...*

*Continued from previous page...*

Atom-1	Atom-2	Interatomic distance (Å)	Clash overlap (Å)
1:A:1055:ILE:HD11	1:A:1580:ARG:HH12	1.61	0.65
3:C:88:ASN:ND2	3:C:94:ASP:OD1	2.30	0.65
13:M:44:LYS:HD3	13:M:48:LYS:HA	1.77	0.65
1:A:956:ARG:HH12	1:A:979:GLY:HA3	1.62	0.64
2:B:602:LYS:HB3	2:B:602:LYS:HZ3	1.61	0.64
13:M:67:ASP:HB2	13:M:71:GLN:HB2	1.79	0.64
1:A:525:ASN:O	1:A:554:ARG:NH1	2.30	0.64
2:B:970:LYS:HZ2	2:B:1000:LEU:HD22	1.62	0.64
2:B:200:GLU:OE2	2:B:736:ARG:NH1	2.31	0.64
2:B:923:GLN:NE2	2:B:959:THR:OG1	2.30	0.64
1:A:461:GLU:HA	1:A:466:LEU:H	1.63	0.64
1:A:1044:THR:OG1	1:A:1591:ARG:NH2	2.30	0.64
2:B:705:PRO:HD3	2:B:920:ARG:HH21	1.62	0.64
5:E:4:GLU:OE1	5:E:8:ASN:ND2	2.31	0.64
5:E:180:ARG:HH11	5:E:192:ARG:HG3	1.61	0.64
14:N:62:VAL:HG12	14:N:63:ASP:H	1.63	0.63
1:A:527:PRO:HG3	1:A:534:THR:HA	1.80	0.63
17:T:25:DT:H4'	17:T:26:DT:H5''	1.79	0.63
1:A:1581:HIS:HA	1:A:1584:LEU:HD12	1.79	0.63
2:B:136:LYS:NZ	2:B:138:LEU:HD21	2.11	0.63
1:A:880:GLN:HB2	2:B:633:THR:HG21	1.79	0.63
2:B:73:ILE:HD11	2:B:429:ARG:HB3	1.80	0.63
2:B:1070:ARG:NH2	17:T:17:DC:OP1	2.30	0.63
1:A:243:PHE:HB3	1:A:251:ILE:HD11	1.79	0.63
2:B:588:ILE:HG12	2:B:642:LEU:HD13	1.81	0.63
2:B:609:ARG:NH1	2:B:626:ILE:O	2.32	0.63
1:A:487:ASP:HB2	1:A:615:ARG:HD2	1.81	0.62
13:M:15:VAL:HG13	13:M:90:LEU:HD22	1.81	0.62
7:G:56:ASN:ND2	7:G:59:GLN:OE1	2.33	0.62
1:A:782:ASP:OD1	1:A:931:SER:OG	2.17	0.62
1:A:1559:ARG:HH12	1:A:1583:ASP:CG	2.03	0.62
1:A:828:CYS:SG	1:A:829:GLY:N	2.72	0.62
2:B:307:GLU:OE2	2:B:311:ARG:NE	2.32	0.62
2:B:776:ILE:HG22	2:B:778:TYR:H	1.64	0.62
2:B:1195:ARG:HH12	2:B:1197:ARG:HD2	1.65	0.62
1:A:1289:SER:HB3	1:A:1473:LYS:NZ	2.15	0.62
7:G:15:ARG:HA	7:G:18:LYS:HE3	1.82	0.62
17:T:15:DC:H2'	17:T:16:DG:H8	1.64	0.62
1:A:1549:VAL:HG11	1:A:1561:THR:HG21	1.81	0.62
14:N:30:LYS:NZ	14:N:31:LYS:O	2.33	0.62
1:A:597:LYS:HE2	2:B:1082:HIS:HA	1.82	0.61

*Continued on next page...*

*Continued from previous page...*

Atom-1	Atom-2	Interatomic distance (Å)	Clash overlap (Å)
1:A:1332:GLU:HA	1:A:1335:LYS:HZ2	1.64	0.61
1:A:1504:ILE:HA	1:A:1523:GLY:HA3	1.81	0.61
1:A:1531:ASP:OD2	5:E:7:ARG:NH2	2.34	0.61
2:B:521:LEU:HD23	2:B:523:GLU:H	1.63	0.61
5:E:124:VAL:HG12	5:E:132:ILE:HD13	1.81	0.61
2:B:94:LYS:HZ2	2:B:147:ASN:H	1.49	0.61
2:B:253:LEU:HD12	2:B:257:GLN:HB3	1.82	0.61
2:B:604:ILE:HB	2:B:608:LEU:HD13	1.83	0.61
2:B:1157:GLN:NE2	2:B:1171:ASN:OD1	2.30	0.61
1:A:247:GLY:O	1:A:248:PHE:CB	2.46	0.61
2:B:73:ILE:HG22	2:B:95:LEU:HB2	1.82	0.61
2:B:240:ARG:N	2:B:244:THR:O	2.31	0.61
5:E:8:ASN:OD1	5:E:11:ARG:NH2	2.32	0.61
1:A:1316:VAL:HG21	1:A:1498:ILE:HA	1.82	0.61
2:B:1094:ASN:HA	2:B:1098:TYR:HB2	1.81	0.61
1:A:248:PHE:CD1	1:A:442:LYS:HG2	2.21	0.61
8:H:28:ALA:HB3	8:H:38:LEU:HB3	1.83	0.61
2:B:214:PRO:HB2	2:B:380:LYS:NZ	2.16	0.60
2:B:987:ASN:HD22	14:N:157:ARG:HH22	1.47	0.60
2:B:1006:ASN:ND2	2:B:1010:ASN:O	2.34	0.60
3:C:114:THR:OG1	3:C:130:ASN:ND2	2.33	0.60
10:J:7:CYS:CB	10:J:46:CYS:SG	2.88	0.60
1:A:79:ILE:HG12	1:A:360:LEU:HB2	1.83	0.60
1:A:1531:ASP:OD2	5:E:11:ARG:HD3	2.01	0.60
16:S:27:DA:N1	17:T:13:DT:N3	2.49	0.60
1:A:639:GLN:HG2	2:B:1091:ARG:HH22	1.65	0.60
1:A:1120:TYR:O	5:E:207:ARG:NH2	2.35	0.60
14:N:76:SER:HB3	14:N:88:LYS:NZ	2.16	0.60
6:F:111:LEU:HD22	6:F:120:ILE:HD12	1.84	0.60
1:A:332:GLN:HE22	1:A:350:VAL:H	1.49	0.60
1:A:1050:TYR:HB3	1:A:1054:ALA:HA	1.83	0.60
1:A:1176:ARG:HH12	6:F:84:TYR:HB2	1.67	0.60
2:B:189:GLU:OE2	2:B:193:TYR:OH	2.13	0.60
2:B:750:PRO:HG2	2:B:753:LYS:HB3	1.83	0.60
3:C:80:ALA:HA	3:C:208:CYS:HA	1.84	0.60
2:B:725:THR:HA	2:B:1036:LEU:HA	1.84	0.60
2:B:709:PHE:HB3	2:B:960:ILE:HG13	1.84	0.59
7:G:40:ARG:HD3	7:G:121:ASN:HB3	1.84	0.59
1:A:658:LEU:HD11	1:A:663:GLY:HA2	1.85	0.59
1:A:1289:SER:HB3	1:A:1473:LYS:HZ1	1.67	0.59
2:B:127:ARG:NH2	2:B:193:TYR:OH	2.35	0.59

*Continued on next page...*

*Continued from previous page...*

Atom-1	Atom-2	Interatomic distance (Å)	Clash overlap (Å)
1:A:1239:THR:HG23	1:A:1518:VAL:HG13	1.84	0.59
2:B:726:MET:SD	2:B:1035:ARG:NH1	2.76	0.59
2:B:1018:THR:O	3:C:65:ASN:ND2	2.34	0.59
11:K:66:VAL:HG23	11:K:67:GLU:HG2	1.83	0.59
13:M:41:TYR:HB2	13:M:52:VAL:HG23	1.85	0.59
1:A:755:ILE:HG23	1:A:930:LEU:HD22	1.84	0.59
2:B:934:ILE:HB	3:C:69:ARG:HD3	1.84	0.59
8:H:98:TYR:HE1	8:H:139:ASN:HA	1.67	0.59
1:A:943:ILE:HA	1:A:986:PHE:HB2	1.85	0.59
1:A:1038:ILE:HD11	1:A:1047:GLN:HB3	1.85	0.59
2:B:501:ARG:NH1	2:B:549:CYS:SG	2.75	0.59
8:H:37:LYS:NZ	8:H:124:ARG:HH12	2.00	0.59
1:A:1121:ASP:OD2	1:A:1126:LYS:HG3	2.03	0.59
11:K:104:ARG:HH21	11:K:106:GLN:HE21	1.51	0.59
1:A:1626:VAL:HG11	2:B:1194:ILE:HD12	1.83	0.58
2:B:204:ARG:HD3	2:B:502:MET:HE2	1.85	0.58
1:A:494:GLU:HG2	1:A:604:LYS:HB2	1.84	0.58
5:E:180:ARG:NH1	5:E:192:ARG:HG3	2.18	0.58
14:N:114:GLU:HB2	14:N:120:LYS:HZ2	1.68	0.58
1:A:855:ARG:HD2	1:A:869:PRO:HA	1.84	0.58
2:B:53:THR:HG21	2:B:169:ARG:HH12	1.67	0.58
1:A:799:GLU:OE1	1:A:1062:HIS:ND1	2.37	0.58
2:B:280:LEU:HD23	2:B:354:LEU:HD13	1.86	0.58
1:A:489:ASN:HD21	1:A:701:ARG:HH12	1.49	0.58
1:A:123:ARG:NH1	1:A:127:TYR:HE2	2.01	0.58
2:B:588:ILE:HD12	2:B:591:LYS:HZ1	1.69	0.58
3:C:218:LYS:HA	10:J:6:ARG:HH11	1.67	0.58
1:A:93:GLN:HG3	1:A:1627:LEU:HD11	1.86	0.58
1:A:249:THR:O	1:A:250:LYS:CB	2.52	0.58
2:B:1002:LYS:HD2	14:N:166:LEU:HD22	1.85	0.58
5:E:20:LYS:HB3	5:E:35:VAL:HG22	1.84	0.57
2:B:646:HIS:HD2	2:B:647:SER:H	1.51	0.57
1:A:250:LYS:O	1:A:251:ILE:O	2.22	0.57
1:A:446:ARG:HG2	1:A:447:THR:H	1.68	0.57
1:A:709:ARG:HH22	1:A:738:ASN:HA	1.70	0.57
1:A:865:ASP:O	1:A:866:LYS:HG3	2.02	0.57
2:B:1043:LYS:O	2:B:1063:ARG:NH2	2.36	0.57
10:J:10:CYS:HB2	10:J:43:ARG:HH21	1.69	0.57
12:L:31:CYS:CB	12:L:34:CYS:SG	2.90	0.57
2:B:110:ASN:OD1	2:B:119:ARG:NH1	2.38	0.57
10:J:21:TYR:OH	10:J:32:GLU:OE1	2.22	0.57

*Continued on next page...*

Continued from previous page...

Atom-1	Atom-2	Interatomic distance (Å)	Clash overlap (Å)
1:A:263:ASN:HA	1:A:266:VAL:HG22	1.86	0.57
1:A:884:ARG:HH11	2:B:634:ARG:CZ	2.16	0.57
2:B:840:LEU:HD11	2:B:859:CYS:HA	1.86	0.57
6:F:89:GLU:OE2	6:F:136:ARG:HD3	2.04	0.57
2:B:102:VAL:HG23	2:B:139:LEU:HG	1.85	0.57
1:A:1512:PRO:HB3	1:A:1517:ARG:HA	1.87	0.57
2:B:585:CYS:SG	2:B:587:GLN:NE2	2.77	0.57
1:A:552:GLU:HA	1:A:555:LYS:HZ2	1.70	0.57
2:B:258:VAL:HG13	2:B:305:ARG:NH1	2.20	0.57
2:B:591:LYS:NZ	2:B:593:ILE:HD11	2.20	0.57
2:B:1017:ALA:HA	3:C:69:ARG:HH22	1.70	0.57
6:F:82:THR:HG23	6:F:136:ARG:HH12	1.69	0.57
9:I:30:CYS:SG	9:I:31:SER:N	2.78	0.56
10:J:7:CYS:HB3	10:J:46:CYS:SG	2.45	0.56
1:A:250:LYS:HG3	1:A:250:LYS:O	2.04	0.56
1:A:108:PHE:N	1:A:331:GLU:OE2	2.38	0.56
1:A:210:ALA:HB3	1:A:1591:ARG:HH12	1.71	0.56
2:B:650:LEU:HB3	2:B:663:ILE:HD11	1.86	0.56
7:G:15:ARG:HH21	7:G:18:LYS:NZ	2.03	0.56
1:A:882:ILE:HD11	1:A:891:ILE:HD11	1.86	0.56
1:A:127:TYR:HB3	1:A:202:THR:HG21	1.88	0.56
1:A:381:SER:OG	1:A:383:ASN:OD1	2.22	0.56
1:A:1272:VAL:HG23	9:I:49:THR:HB	1.87	0.56
2:B:886:ASN:HB2	2:B:902:SER:HB3	1.87	0.56
1:A:611:GLU:HG3	1:A:612:LYS:H	1.69	0.56
1:A:1637:PRO:HD3	1:A:1648:ASN:HD21	1.71	0.56
1:A:1643:VAL:HG13	1:A:1644:GLY:H	1.71	0.56
2:B:648:ARG:NH1	2:B:650:LEU:HD21	2.20	0.56
6:F:101:ILE:HD11	6:F:107:VAL:HG22	1.88	0.56
1:A:121:LYS:NZ	1:A:133:SER:O	2.39	0.56
1:A:985:ARG:NH1	1:A:987:TYR:HD2	2.03	0.56
2:B:100:GLU:OE2	2:B:140:LYS:HE2	2.06	0.56
1:A:653:THR:O	1:A:667:ARG:NH2	2.37	0.56
5:E:93:MET:HG2	5:E:120:ALA:HB1	1.88	0.56
1:A:1127:TYR:HB3	1:A:1132:TYR:HD2	1.70	0.55
2:B:853:GLU:N	2:B:856:ASP:OD2	2.39	0.55
13:M:13:GLU:OE2	13:M:85:LYS:HD3	2.05	0.55
1:A:82:PRO:HG3	1:A:396:ILE:HG21	1.87	0.55
3:C:164:ALA:HB2	3:C:191:ILE:HB	1.88	0.55
4:D:26:GLN:H	7:G:42:PRO:HG2	1.70	0.55
9:I:28:VAL:HG22	9:I:38:PRO:HD3	1.88	0.55

Continued on next page...



Continued from previous page...

Atom-1	Atom-2	Interatomic distance (Å)	Clash overlap (Å)
1:A:489:ASN:ND2	11:K:94:PRO:O	2.39	0.55
1:A:1240:LEU:HB2	1:A:1519:LEU:HB3	1.88	0.55
1:A:1484:LEU:HD13	1:A:1487:ASN:HB3	1.88	0.55
2:B:320:LEU:HB3	2:B:326:VAL:HG22	1.89	0.55
5:E:91:LYS:HD2	5:E:92:THR:HG23	1.87	0.55
1:A:756:LYS:HE2	1:A:758:GLU:HB2	1.89	0.55
5:E:151:PRO:HB2	5:E:198:ILE:HG12	1.89	0.55
2:B:239:VAL:HA	2:B:245:SER:HA	1.89	0.55
7:G:15:ARG:HH21	7:G:18:LYS:HZ2	1.53	0.55
2:B:518:ARG:NH1	2:B:537:SER:O	2.21	0.55
6:F:93:ILE:HD13	6:F:132:LEU:HD22	1.87	0.55
14:N:114:GLU:HG2	14:N:116:LYS:NZ	2.22	0.55
17:T:24:DA:H2''	17:T:25:DT:H5''	1.87	0.55
8:H:115:TYR:HE1	8:H:124:ARG:HG3	1.72	0.55
1:A:226:LYS:HG2	1:A:227:LEU:H	1.71	0.55
1:A:344:ASN:HD21	1:A:348:LYS:H	1.53	0.55
2:B:286:ARG:NH2	13:M:28:LYS:O	2.37	0.55
2:B:737:SER:HA	2:B:904:LYS:HZ1	1.71	0.55
3:C:190:ASP:HB3	10:J:16:ASP:HB2	1.89	0.55
1:A:450:LYS:O	1:A:451:VAL:HB	2.07	0.55
1:A:874:GLU:OE2	1:A:878:ARG:NH1	2.40	0.55
2:B:566:TYR:HD2	13:M:73:SER:HB3	1.72	0.55
2:B:939:SER:HA	2:B:1013:MET:HG2	1.88	0.55
1:A:949:GLN:HA	1:A:981:TYR:HA	1.89	0.54
2:B:558:VAL:HG13	2:B:562:PRO:HG2	1.89	0.54
2:B:791:LYS:O	2:B:795:GLU:HB2	2.07	0.54
2:B:1065:ARG:NH2	15:R:11:A:OP1	2.40	0.54
2:B:1105:ARG:HD2	2:B:1172:GLU:HB3	1.88	0.54
3:C:218:LYS:HA	10:J:6:ARG:NH1	2.22	0.54
13:M:77:VAL:HG12	13:M:92:LYS:HA	1.90	0.54
1:A:720:PHE:HB2	8:H:96:VAL:HG23	1.90	0.54
1:A:884:ARG:HH11	2:B:634:ARG:NE	2.05	0.54
1:A:1332:GLU:HA	1:A:1335:LYS:NZ	2.22	0.54
2:B:1047:ARG:NH1	2:B:1059:PRO:HB3	2.21	0.54
3:C:106:LEU:HA	3:C:186:PRO:HA	1.90	0.54
14:N:148:ILE:HG12	14:N:148:ILE:O	2.08	0.54
2:B:934:ILE:O	3:C:69:ARG:NH1	2.40	0.54
4:D:99:LEU:HD12	4:D:100:PRO:HD2	1.89	0.54
1:A:955:ARG:HG2	1:A:956:ARG:H	1.72	0.54
1:A:1058:THR:HG23	1:A:1059:LYS:HG3	1.89	0.54
2:B:737:SER:HA	2:B:904:LYS:NZ	2.23	0.54

Continued on next page...



Continued from previous page...

Atom-1	Atom-2	Interatomic distance (Å)	Clash overlap (Å)
4:D:25:THR:N	7:G:42:PRO:O	2.38	0.54
1:A:519:LEU:HD21	1:A:577:VAL:HB	1.90	0.54
1:A:865:ASP:C	1:A:866:LYS:HG3	2.28	0.54
1:A:1655:ASP:HB2	6:F:137:TYR:HE2	1.71	0.54
1:A:475:ARG:HD3	2:B:1070:ARG:HB2	1.88	0.54
2:B:587:GLN:HG3	2:B:592:ILE:HG13	1.90	0.54
3:C:83:VAL:HG13	3:C:206:ALA:HB2	1.89	0.54
17:T:22:DT:H2''	17:T:23:DC:H5'	1.89	0.54
3:C:51:GLU:HG3	3:C:303:GLU:HG2	1.90	0.54
1:A:658:LEU:HD12	1:A:1058:THR:HA	1.89	0.54
1:A:1009:THR:HG23	1:A:1012:LYS:HE2	1.88	0.54
6:F:103:MET:HB3	7:G:51:PRO:HG2	1.90	0.54
1:A:1446:ARG:NH1	1:A:1450:ILE:HD11	2.22	0.54
2:B:17:ARG:H	2:B:17:ARG:HD2	1.73	0.54
2:B:1065:ARG:O	2:B:1066:HIS:HB2	2.08	0.54
13:M:80:LEU:HB2	13:M:89:GLN:HE22	1.73	0.54
1:A:1180:ASN:HD21	6:F:86:THR:HB	1.72	0.53
2:B:454:ASN:ND2	17:T:28:DC:OP2	2.37	0.53
2:B:796:ARG:HE	3:C:217:ALA:HB1	1.72	0.53
2:B:963:PHE:O	2:B:1027:TYR:OH	2.26	0.53
3:C:113:LEU:HG	3:C:210:LEU:HD11	1.90	0.53
7:G:105:ILE:HG23	7:G:116:THR:HB	1.90	0.53
10:J:10:CYS:SG	10:J:11:GLY:N	2.82	0.53
1:A:603:HIS:CE1	1:A:620:ASN:HD21	2.26	0.53
2:B:934:ILE:HG21	3:C:73:SER:HB2	1.90	0.53
9:I:2:SER:N	9:I:9:PHE:O	2.41	0.53
2:B:1063:ARG:NE	17:T:20:DG:OP1	2.37	0.53
10:J:17:LYS:HB3	10:J:39:LEU:HD21	1.91	0.53
14:N:63:ASP:OD2	14:N:67:LEU:HD13	2.09	0.53
1:A:1609:SER:HA	1:A:1612:LYS:NZ	2.24	0.53
2:B:878:GLU:OE2	2:B:1041:ASN:HB2	2.08	0.53
3:C:44:ILE:HG13	11:K:138:LYS:NZ	2.23	0.53
10:J:36:LEU:HD22	10:J:41:LEU:HD12	1.90	0.53
1:A:764:SER:C	1:A:766:GLU:H	2.12	0.53
1:A:1501:ILE:HG23	1:A:1504:ILE:HB	1.90	0.53
1:A:342:ARG:NH1	1:A:1629:ASN:O	2.42	0.53
1:A:1313:LEU:HA	1:A:1498:ILE:HD11	1.90	0.53
5:E:16:PHE:O	5:E:20:LYS:NZ	2.40	0.53
1:A:227:LEU:O	1:A:230:ARG:N	2.39	0.53
1:A:15:ASP:N	1:A:15:ASP:OD1	2.42	0.52
2:B:566:TYR:CZ	13:M:74:ASN:HB3	2.44	0.52

Continued on next page...

*Continued from previous page...*

Atom-1	Atom-2	Interatomic distance (Å)	Clash overlap (Å)
3:C:259:ASP:HB2	3:C:264:GLU:OE2	2.09	0.52
1:A:1580:ARG:HH11	5:E:204:THR:HG21	1.73	0.52
1:A:760:TRP:HB2	1:A:764:SER:HB2	1.91	0.52
2:B:60:LEU:HD12	2:B:242:ASP:HA	1.92	0.52
2:B:245:SER:HB2	2:B:477:ASP:OD2	2.10	0.52
2:B:588:ILE:HD12	2:B:591:LYS:HZ2	1.74	0.52
1:A:882:ILE:HD12	1:A:888:LYS:HB3	1.91	0.52
1:A:1111:GLU:OE2	1:A:1114:TYR:OH	2.19	0.52
1:A:1657:LEU:HD12	7:G:104:LEU:HD12	1.92	0.52
2:B:207:ILE:HD11	2:B:400:GLN:HB3	1.90	0.52
2:B:581:PRO:HA	2:B:638:PRO:HG2	1.91	0.52
2:B:1189:LEU:HG	2:B:1194:ILE:HB	1.92	0.52
6:F:90:ARG:HA	6:F:93:ILE:HG22	1.91	0.52
10:J:7:CYS:HB3	10:J:10:CYS:SG	2.50	0.52
16:S:11:DG:N2	17:T:29:DT:O2	2.43	0.52
1:A:694:GLN:HG3	11:K:77:ARG:NH1	2.24	0.52
1:A:827:THR:HG22	2:B:776:ILE:HG23	1.92	0.52
1:A:1124:LEU:HD11	1:A:1129:PRO:HB3	1.91	0.52
2:B:913:ILE:HA	2:B:927:CYS:HB2	1.92	0.52
2:B:1158:ILE:HG21	2:B:1166:LYS:NZ	2.24	0.52
4:D:22:ILE:HD11	7:G:43:ILE:HB	1.91	0.52
1:A:1501:ILE:HD11	1:A:1528:ALA:HB1	1.92	0.52
2:B:401:GLU:HG3	2:B:648:ARG:HA	1.92	0.52
3:C:136:LEU:HD23	3:C:204:LEU:HD21	1.90	0.52
1:A:1004:GLU:OE2	2:B:519:LYS:HG3	2.09	0.52
2:B:265:ARG:H	2:B:265:ARG:HD2	1.74	0.52
2:B:561:ILE:HB	2:B:562:PRO:HD3	1.91	0.52
7:G:249:LEU:HG	7:G:250:ILE:HG13	1.91	0.52
8:H:117:SER:HB2	8:H:122:LEU:HD13	1.91	0.52
1:A:111:LYS:H	1:A:111:LYS:HD2	1.75	0.52
1:A:450:LYS:O	1:A:451:VAL:CB	2.57	0.52
1:A:771:PHE:HE1	1:A:776:LEU:HD13	1.75	0.52
2:B:73:ILE:HA	2:B:342:PRO:HD3	1.92	0.52
2:B:852:VAL:HG13	2:B:856:ASP:HB2	1.92	0.52
1:A:468:ARG:CZ	1:A:1021:ARG:HH12	2.23	0.52
1:A:1657:LEU:HD23	6:F:135:ARG:HB2	1.93	0.51
2:B:290:ASP:OD2	2:B:577:PHE:HD1	1.93	0.51
2:B:490:LYS:NZ	2:B:736:ARG:HH12	2.07	0.51
2:B:982:THR:HG23	2:B:985:ILE:HD13	1.91	0.51
1:A:99:ARG:HE	1:A:228:LEU:HD22	1.75	0.51
13:M:38:PHE:HB2	14:N:119:LEU:HD11	1.91	0.51

*Continued on next page...*

*Continued from previous page...*

Atom-1	Atom-2	Interatomic distance (Å)	Clash overlap (Å)
1:A:57:PHE:HE1	1:A:370:PRO:HD3	1.76	0.51
1:A:701:ARG:NE	11:K:92:SER:OG	2.42	0.51
1:A:764:SER:O	1:A:766:GLU:N	2.36	0.51
1:A:982:VAL:HA	1:A:994:GLU:HG2	1.92	0.51
1:A:1656:VAL:HG13	6:F:132:LEU:HD21	1.92	0.51
2:B:73:ILE:HD12	2:B:425:ILE:HG23	1.91	0.51
3:C:91:VAL:HG11	10:J:60:PHE:HB3	1.91	0.51
9:I:12:ASP:OD1	13:M:31:ARG:NH2	2.43	0.51
2:B:344:GLN:HE21	2:B:349:VAL:HG21	1.74	0.51
10:J:64:ASN:HD22	10:J:66:LEU:H	1.57	0.51
13:M:9:GLU:HA	14:N:71:PRO:HA	1.92	0.51
13:M:51:PHE:HB2	13:M:66:THR:HG21	1.92	0.51
6:F:114:GLU:OE1	6:F:119:ARG:NH2	2.43	0.51
14:N:57:LYS:HB2	14:N:138:SER:HA	1.91	0.51
1:A:122:LEU:HD23	1:A:125:LEU:HD12	1.91	0.51
1:A:956:ARG:NH1	1:A:979:GLY:O	2.42	0.51
1:A:1028:GLU:HG3	1:A:1637:PRO:HD2	1.93	0.51
1:A:1494:ARG:NH1	9:I:57:PRO:HG2	2.25	0.51
2:B:94:LYS:NZ	2:B:147:ASN:H	2.07	0.51
2:B:292:ILE:HA	2:B:379:ARG:HD3	1.92	0.51
2:B:602:LYS:HB3	2:B:602:LYS:NZ	2.25	0.51
2:B:1000:LEU:HB3	2:B:1005:TYR:HB2	1.91	0.51
4:D:32:SER:OG	4:D:35:GLU:OE1	2.21	0.51
1:A:539:GLU:OE2	1:A:575:LYS:HG3	2.11	0.51
2:B:1039:MET:HG3	2:B:1043:LYS:HG2	1.92	0.51
5:E:90:VAL:HG12	5:E:120:ALA:HB2	1.92	0.51
7:G:59:GLN:HE21	7:G:63:LYS:NZ	2.09	0.51
11:K:55:SER:HB3	11:K:58:GLY:HA2	1.93	0.51
1:A:378:HIS:NE2	17:T:25:DT:O2	2.33	0.51
2:B:529:CYS:SG	2:B:532:HIS:HB3	2.51	0.51
2:B:894:LYS:NZ	2:B:896:GLN:HE21	2.08	0.51
2:B:957:ARG:HB3	2:B:959:THR:HG23	1.93	0.51
3:C:93:GLN:HG3	3:C:95:GLU:OE2	2.11	0.51
1:A:89:LEU:HB3	1:A:1623:THR:HG22	1.92	0.51
1:A:657:TYR:HD1	1:A:667:ARG:HD2	1.77	0.51
2:B:22:GLU:OE2	10:J:55:ASP:HB3	2.11	0.51
2:B:236:ILE:HD12	2:B:377:MET:HE1	1.93	0.51
2:B:656:LEU:HD21	2:B:689:VAL:HG13	1.93	0.51
2:B:785:ASP:OD1	2:B:925:GLY:HA2	2.11	0.51
1:A:1559:ARG:NH1	1:A:1587:ASP:HB2	2.22	0.50
1:A:1661:PRO:HA	7:G:102:GLU:HG3	1.92	0.50

*Continued on next page...*

*Continued from previous page...*

Atom-1	Atom-2	Interatomic distance (Å)	Clash overlap (Å)
1:A:760:TRP:CB	1:A:764:SER:CB	2.82	0.50
1:A:1224:GLU:O	1:A:1228:THR:OG1	2.25	0.50
1:A:1316:VAL:HG11	1:A:1498:ILE:HD12	1.92	0.50
2:B:779:THR:HG21	2:B:788:ILE:HG21	1.92	0.50
2:B:916:LYS:HD3	2:B:1038:HIS:CG	2.45	0.50
3:C:245:ARG:HH22	3:C:258:ILE:HG12	1.76	0.50
1:A:1545:ASP:OD1	1:A:1546:VAL:N	2.44	0.50
2:B:604:ILE:HA	2:B:607:THR:HB	1.92	0.50
7:G:74:ASN:HB3	7:G:77:VAL:HG12	1.93	0.50
8:H:5:LEU:O	8:H:133:ASN:ND2	2.44	0.50
2:B:596:VAL:HG22	2:B:597:SER:H	1.76	0.50
2:B:934:ILE:HG12	3:C:73:SER:HB2	1.93	0.50
9:I:17:LEU:HD23	9:I:17:LEU:H	1.76	0.50
1:A:250:LYS:HD2	1:A:314:TYR:HD2	1.66	0.50
1:A:582:LYS:NZ	1:A:584:ARG:HH21	2.09	0.50
2:B:144:SER:HB3	2:B:148:GLY:HA2	1.91	0.50
1:A:128:GLY:HA3	1:A:207:SER:HB2	1.94	0.50
1:A:732:ILE:HA	1:A:735:VAL:HG12	1.94	0.50
1:A:756:LYS:HB2	1:A:759:TYR:HD1	1.76	0.50
2:B:705:PRO:HG2	2:B:921:HIS:NE2	2.27	0.50
14:N:91:ASP:OD1	14:N:92:ASP:N	2.44	0.50
16:S:9:DT:H2"	16:S:10:DA:C8	2.47	0.50
3:C:319:ARG:NH2	11:K:132:GLU:OE2	2.44	0.50
7:G:161:ASN:HA	7:G:249:LEU:HD22	1.93	0.50
1:A:1238:MET:HE3	1:A:1524:VAL:HA	1.93	0.50
13:M:38:PHE:HD1	13:M:55:GLY:HA3	1.76	0.50
1:A:10:GLU:HB3	1:A:1645:LYS:HE3	1.94	0.50
1:A:790:LYS:NZ	1:A:790:LYS:HB3	2.26	0.50
1:A:847:LEU:HD22	1:A:983:LYS:HD2	1.94	0.50
1:A:1620:GLN:O	1:A:1623:THR:OG1	2.28	0.50
7:G:59:GLN:HG3	7:G:63:LYS:HZ3	1.76	0.50
1:A:1264:SER:HB3	1:A:1494:ARG:HH21	1.77	0.49
2:B:819:ASP:OD1	2:B:819:ASP:N	2.45	0.49
3:C:268:LYS:NZ	3:C:268:LYS:HB3	2.27	0.49
1:A:555:LYS:HB2	1:A:555:LYS:NZ	2.27	0.49
1:A:748:ASN:HD22	1:A:1071:ASP:HB3	1.76	0.49
3:C:134:LEU:HD12	3:C:167:LEU:HB3	1.94	0.49
6:F:135:ARG:NE	6:F:145:ASP:OD1	2.45	0.49
1:A:467:PHE:HE1	2:B:1185:LEU:HD11	1.77	0.49
5:E:112:TYR:HE2	5:E:134:THR:HG23	1.77	0.49
17:T:29:DT:H2"	17:T:30:DA:C8	2.47	0.49

*Continued on next page...*

*Continued from previous page...*

Atom-1	Atom-2	Interatomic distance (Å)	Clash overlap (Å)
1:A:226:LYS:O	1:A:228:LEU:N	2.46	0.49
1:A:1617:THR:HG22	1:A:1620:GLN:HB3	1.95	0.49
2:B:71:LYS:HD2	2:B:421:LEU:HD12	1.94	0.49
2:B:305:ARG:NH1	2:B:382:TYR:OH	2.44	0.49
5:E:191:LYS:NZ	5:E:191:LYS:HB3	2.27	0.49
1:A:555:LYS:HZ2	1:A:555:LYS:HB2	1.78	0.49
2:B:519:LYS:NZ	2:B:519:LYS:HB3	2.27	0.49
7:G:58:LEU:HB2	7:G:87:LEU:HD21	1.95	0.49
1:A:698:GLY:O	1:A:819:ASN:ND2	2.46	0.49
1:A:1233:ILE:HG23	1:A:1235:THR:H	1.77	0.49
1:A:1485:MET:SD	1:A:1485:MET:N	2.85	0.49
13:M:23:VAL:HB	14:N:109:LEU:HD12	1.95	0.49
2:B:261:ARG:NH1	2:B:270:LEU:HD22	2.28	0.49
2:B:655:TYR:HB2	2:B:662:ASP:OD2	2.12	0.49
2:B:655:TYR:O	2:B:659:ASP:HA	2.12	0.49
2:B:788:ILE:HD11	2:B:948:ILE:HD13	1.94	0.49
3:C:61:THR:HG22	3:C:298:PHE:HZ	1.77	0.49
3:C:87:ASN:ND2	3:C:201:GLU:OE2	2.45	0.49
7:G:46:TYR:CZ	7:G:115:PHE:HB3	2.48	0.49
1:A:483:VAL:O	1:A:613:THR:OG1	2.27	0.49
2:B:212:ASN:HB3	2:B:590:GLY:N	2.28	0.49
1:A:716:PRO:O	1:A:730:GLN:NE2	2.39	0.48
2:B:110:ASN:HA	2:B:119:ARG:NH1	2.28	0.48
1:A:1317:ILE:HA	1:A:1321:PHE:HB3	1.96	0.48
2:B:136:LYS:HZ1	2:B:138:LEU:HD21	1.75	0.48
2:B:236:ILE:HG23	2:B:248:ASN:HB2	1.94	0.48
1:A:760:TRP:HB3	1:A:764:SER:HB3	1.91	0.48
2:B:599:GLU:OE1	2:B:602:LYS:NZ	2.42	0.48
3:C:77:SER:HB2	3:C:221:PRO:HD3	1.96	0.48
6:F:81:THR:OG1	6:F:136:ARG:NH2	2.46	0.48
13:M:65:TYR:CE2	13:M:68:SER:HB3	2.48	0.48
3:C:230:LEU:HB2	3:C:297:HIS:CD2	2.48	0.48
17:T:7:DA:H2''	17:T:8:DG:C8	2.48	0.48
1:A:439:ASP:OD1	1:A:440:SER:N	2.45	0.48
1:A:865:ASP:O	1:A:866:LYS:HG2	2.11	0.48
1:A:910:LYS:HB2	1:A:910:LYS:NZ	2.29	0.48
2:B:142:LYS:HG3	2:B:153:PHE:HE1	1.78	0.48
13:M:57:ASN:HB3	13:M:60:LEU:HB3	1.94	0.48
13:M:77:VAL:HG13	14:N:58:PHE:CE1	2.48	0.48
16:S:29:DT:H2''	16:S:30:DA:C8	2.47	0.48
1:A:110:LEU:HD12	1:A:114:GLU:OE2	2.13	0.48

*Continued on next page...*

*Continued from previous page...*

Atom-1	Atom-2	Interatomic distance (Å)	Clash overlap (Å)
2:B:136:LYS:HZ2	2:B:138:LEU:HD21	1.76	0.48
2:B:150:GLU:OE2	2:B:441:LYS:HG3	2.13	0.48
2:B:970:LYS:HZ2	2:B:1000:LEU:CD2	2.25	0.48
3:C:55:ASP:OD2	3:C:271:ARG:NE	2.46	0.48
8:H:101:ALA:HA	8:H:116:TYR:HB3	1.95	0.48
1:A:835:LEU:HD21	1:A:843:ARG:HH22	1.79	0.48
1:A:1240:LEU:HB3	1:A:1536:ILE:HD12	1.94	0.48
7:G:226:ASP:OD1	7:G:227:GLY:N	2.45	0.48
8:H:37:LYS:NZ	8:H:37:LYS:HB3	2.29	0.48
8:H:146:ARG:HD3	8:H:146:ARG:OXT	2.13	0.48
17:T:26:DT:H2''	17:T:27:DA:C8	2.49	0.48
1:A:611:GLU:HG2	2:B:913:ILE:HG12	1.96	0.48
1:A:1296:PHE:HB2	1:A:1468:LYS:HA	1.96	0.48
2:B:699:ILE:HD12	2:B:760:TYR:HE2	1.78	0.48
11:K:54:THR:HA	11:K:61:ALA:HA	1.94	0.48
1:A:593:PRO:HB3	17:T:16:DG:H1'	1.96	0.48
1:A:1600:ARG:NH1	1:A:1601:GLN:HG3	2.29	0.48
2:B:224:ASN:OD1	2:B:224:ASN:N	2.46	0.48
2:B:790:ASN:HB2	2:B:946:ASP:HA	1.95	0.48
7:G:50:ALA:HB2	7:G:64:GLN:HE22	1.77	0.48
14:N:114:GLU:HG2	14:N:116:LYS:HZ2	1.77	0.48
1:A:107:HIS:CE1	1:A:330:LYS:HB3	2.48	0.48
1:A:552:GLU:OE1	1:A:555:LYS:NZ	2.43	0.48
2:B:239:VAL:H	2:B:361:HIS:HB3	1.79	0.48
3:C:145:ASP:OD1	3:C:146:ALA:N	2.47	0.48
6:F:138:LEU:HD21	6:F:144:GLU:OE2	2.13	0.48
9:I:23:VAL:HG12	9:I:24:LEU:H	1.79	0.48
11:K:85:ASP:OD2	11:K:107:THR:OG1	2.31	0.48
1:A:102:CYS:HB3	1:A:105:CYS:SG	2.54	0.47
2:B:1123:ILE:HG22	2:B:1124:SER:H	1.79	0.47
13:M:48:LYS:HG2	13:M:49:ASP:H	1.78	0.47
1:A:247:GLY:O	1:A:248:PHE:HD2	1.98	0.47
1:A:1015:ARG:O	1:A:1223:ARG:NH2	2.47	0.47
11:K:46:LYS:NZ	11:K:67:GLU:HG3	2.30	0.47
1:A:388:LYS:HG3	1:A:433:ASP:OD2	2.14	0.47
3:C:107:LYS:HE3	3:C:187:ALA:HA	1.95	0.47
3:C:324:LYS:HD2	11:K:68:GLU:OE2	2.14	0.47
13:M:16:GLN:HG2	13:M:91:TYR:HA	1.96	0.47
1:A:467:PHE:HD1	1:A:471:MET:HG3	1.79	0.47
1:A:994:GLU:OE1	1:A:994:GLU:N	2.47	0.47
1:A:1191:GLN:HE22	2:B:1078:ALA:HA	1.79	0.47

*Continued on next page...*

*Continued from previous page...*

Atom-1	Atom-2	Interatomic distance (Å)	Clash overlap (Å)
2:B:613:VAL:HG22	2:B:660:LYS:HE3	1.95	0.47
3:C:117:ASP:HB3	3:C:120:LEU:HD23	1.97	0.47
5:E:144:ILE:HD13	5:E:183:PRO:HB2	1.95	0.47
14:N:81:THR:HA	14:N:85:HIS:HD2	1.78	0.47
1:A:1032:VAL:HG23	1:A:1185:VAL:HG21	1.96	0.47
1:A:1288:ARG:NH1	1:A:1481:GLU:OE2	2.48	0.47
2:B:802:THR:HG22	2:B:908:ARG:HA	1.95	0.47
13:M:80:LEU:HB2	13:M:89:GLN:NE2	2.29	0.47
1:A:11:ILE:HD13	1:A:1643:VAL:HG21	1.96	0.47
2:B:214:PRO:HB2	2:B:380:LYS:HZ3	1.78	0.47
1:A:461:GLU:HB3	1:A:465:GLY:H	1.79	0.47
1:A:477:ASN:O	2:B:1091:ARG:NH1	2.48	0.47
1:A:1589:MET:O	1:A:1596:LEU:N	2.48	0.47
2:B:129:ARG:CZ	2:B:888:ILE:HG23	2.45	0.47
3:C:128:ASP:HB3	3:C:173:GLY:HA3	1.97	0.47
8:H:6:PHE:HB3	8:H:59:ILE:HB	1.96	0.47
1:A:748:ASN:HA	1:A:771:PHE:O	2.15	0.47
5:E:37:LEU:HD11	5:E:41:ASP:OD2	2.14	0.47
6:F:58:PHE:HA	6:F:61:HIS:HB3	1.96	0.47
1:A:507:TYR:HE2	1:A:509:GLU:OE2	1.98	0.47
1:A:511:VAL:HG12	1:A:519:LEU:HD23	1.97	0.47
1:A:1151:ASN:HB2	1:A:1153:LYS:HZ3	1.80	0.47
5:E:72:PHE:HE1	5:E:155:ARG:HH12	1.60	0.47
16:S:6:DT:H2''	16:S:7:DA:C8	2.50	0.47
2:B:882:ILE:HG12	2:B:905:TYR:CE1	2.49	0.46
2:B:909:ARG:HD3	2:B:1040:VAL:HG21	1.97	0.46
8:H:103:LYS:HB2	8:H:115:TYR:HB2	1.97	0.46
1:A:105:CYS:HB3	1:A:236:CYS:SG	2.55	0.46
2:B:532:HIS:CE1	2:B:719:CYS:HG	2.33	0.46
8:H:8:ASP:OD1	8:H:9:ILE:N	2.48	0.46
8:H:125:LEU:HB3	8:H:130:ARG:HH12	1.80	0.46
1:A:679:TRP:CD2	2:B:1023:ARG:NH1	2.81	0.46
1:A:1276:THR:HB	9:I:45:LEU:HB3	1.96	0.46
2:B:129:ARG:NH1	2:B:888:ILE:HG23	2.31	0.46
7:G:58:LEU:HD23	7:G:58:LEU:H	1.81	0.46
1:A:829:GLY:N	1:A:832:ASP:OD2	2.49	0.46
1:A:1530:TRP:HE1	1:A:1553:TYR:HH	1.63	0.46
2:B:427:GLN:NE2	2:B:452:ARG:HH12	2.14	0.46
2:B:674:ILE:HG22	2:B:688:HIS:HB2	1.96	0.46
2:B:1025:ASP:OD2	3:C:277:ARG:HD2	2.16	0.46
14:N:117:GLU:OE2	14:N:120:LYS:NZ	2.38	0.46

*Continued on next page...*



*Continued from previous page...*

Atom-1	Atom-2	Interatomic distance (Å)	Clash overlap (Å)
1:A:584:ARG:HG2	6:F:116:ASP:OD2	2.16	0.46
1:A:843:ARG:NE	1:A:985:ARG:HD3	2.31	0.46
1:A:1240:LEU:HA	1:A:1541:ILE:HG22	1.98	0.46
8:H:23:VAL:HG12	8:H:43:ASN:HB3	1.98	0.46
2:B:492:ASN:ND2	2:B:725:THR:OG1	2.49	0.46
2:B:494:TYR:HB3	2:B:700:LEU:HD21	1.97	0.46
2:B:975:HIS:CE1	14:N:166:LEU:HD23	2.51	0.46
3:C:86:PHE:HB3	12:L:62:LYS:HG3	1.97	0.46
3:C:216:HIS:CD2	3:C:218:LYS:HD3	2.51	0.46
14:N:134:ASP:OD1	14:N:135:LYS:N	2.49	0.46
1:A:1600:ARG:HD2	1:A:1616:GLU:OE2	2.15	0.46
2:B:74:PHE:HB2	2:B:342:PRO:HG2	1.98	0.46
1:A:39:ASP:OD2	1:A:43:HIS:NE2	2.49	0.46
1:A:450:LYS:C	1:A:451:VAL:HG23	2.36	0.46
1:A:591:ARG:NH2	1:A:631:ASP:HB3	2.31	0.46
1:A:701:ARG:NH1	11:K:93:ILE:O	2.49	0.46
1:A:1114:TYR:HE2	1:A:1115:LYS:NZ	2.13	0.46
2:B:591:LYS:HZ2	2:B:593:ILE:HD11	1.79	0.46
2:B:773:VAL:HG22	2:B:947:ILE:HB	1.96	0.46
2:B:779:THR:HG22	2:B:781:TYR:H	1.81	0.46
14:N:113:SER:OG	14:N:114:GLU:OE1	2.26	0.46
1:A:753:ASN:N	1:A:767:ASN:O	2.43	0.46
2:B:1053:ASN:N	2:B:1058:GLN:O	2.49	0.46
5:E:43:LYS:O	5:E:47:CYS:HB3	2.16	0.46
13:M:15:VAL:HG22	13:M:90:LEU:HB3	1.97	0.46
1:A:247:GLY:O	1:A:248:PHE:CD2	2.69	0.46
1:A:507:TYR:HB2	1:A:637:PHE:CE2	2.51	0.46
1:A:1114:TYR:HE2	1:A:1115:LYS:HZ2	1.63	0.46
2:B:524:SER:OG	2:B:528:LEU:HB2	2.15	0.46
2:B:545:PHE:HB3	2:B:549:CYS:SG	2.55	0.46
2:B:887:LEU:HB2	12:L:56:LEU:HB2	1.98	0.46
1:A:250:LYS:NZ	1:A:314:TYR:CZ	2.63	0.45
1:A:950:GLN:HE22	1:A:998:HIS:HD2	1.64	0.45
2:B:207:ILE:HG22	2:B:505:ARG:HA	1.98	0.45
2:B:221:SER:OG	16:S:25:DA:OP2	2.28	0.45
2:B:359:LEU:HD23	2:B:370:LYS:HG2	1.97	0.45
3:C:293:ARG:HH21	3:C:295:ARG:NH2	2.14	0.45
1:A:249:THR:O	1:A:250:LYS:HB3	2.17	0.45
1:A:99:ARG:HH11	1:A:228:LEU:HD22	1.80	0.45
1:A:1180:ASN:ND2	6:F:87:LYS:HG2	2.31	0.45
2:B:21:ARG:NH2	10:J:53:HIS:O	2.49	0.45

*Continued on next page...*



*Continued from previous page...*

Atom-1	Atom-2	Interatomic distance (Å)	Clash overlap (Å)
2:B:970:LYS:NZ	2:B:1000:LEU:HD22	2.31	0.45
1:A:315:ILE:HB	1:A:319:GLU:OE2	2.16	0.45
4:D:30:HIS:HA	7:G:39:VAL:HG23	1.97	0.45
7:G:80:VAL:HG11	7:G:153:PHE:HE1	1.81	0.45
8:H:23:VAL:HA	8:H:43:ASN:HA	1.98	0.45
1:A:753:ASN:ND2	1:A:766:GLU:O	2.48	0.45
1:A:1609:SER:HA	1:A:1612:LYS:HZ1	1.82	0.45
2:B:1065:ARG:NH2	15:R:11:A:P	2.89	0.45
3:C:32:ASN:ND2	3:C:34:GLU:OE2	2.50	0.45
4:D:47:LYS:HD3	7:G:84:TYR:HE1	1.81	0.45
7:G:135:GLY:HA3	7:G:147:LEU:HD13	1.98	0.45
1:A:32:ILE:HD11	1:A:79:ILE:HG22	1.99	0.45
1:A:99:ARG:HH11	1:A:228:LEU:HD13	1.81	0.45
1:A:506:THR:OG1	1:A:578:TYR:HB3	2.17	0.45
1:A:1047:GLN:HB2	1:A:1587:ASP:OD2	2.17	0.45
2:B:648:ARG:HH12	2:B:650:LEU:HD21	1.81	0.45
2:B:709:PHE:HD1	2:B:960:ILE:HD12	1.81	0.45
13:M:43:LYS:HE3	14:N:28:GLY:HA3	1.98	0.45
1:A:21:ALA:O	1:A:25:ARG:HG2	2.17	0.45
1:A:956:ARG:NH1	1:A:979:GLY:HA3	2.29	0.45
1:A:1197:SER:O	1:A:1201:THR:OG1	2.32	0.45
1:A:1265:GLU:HG3	9:I:58:SER:HB3	1.99	0.45
1:A:1294:MET:HG3	1:A:1470:CYS:HB3	1.99	0.45
2:B:382:TYR:HA	2:B:385:VAL:HG22	1.99	0.45
5:E:94:LYS:NZ	5:E:123:LEU:HD11	2.32	0.45
1:A:831:ASP:HB2	1:A:834:ARG:HH11	1.81	0.45
2:B:464:PHE:HE1	2:B:470:LEU:HB3	1.82	0.45
4:D:86:ILE:HA	4:D:89:LEU:HD12	1.99	0.45
1:A:699:CYS:O	1:A:815:ARG:NH2	2.49	0.45
2:B:167:SER:N	2:B:170:CYS:SG	2.75	0.45
3:C:75:VAL:HG21	3:C:313:ILE:HD11	1.99	0.45
1:A:450:LYS:O	1:A:451:VAL:HG23	2.17	0.45
1:A:552:GLU:HA	1:A:555:LYS:NZ	2.31	0.45
1:A:597:LYS:HZ2	1:A:656:GLN:HE22	1.64	0.45
1:A:618:TYR:OH	2:B:780:GLY:O	2.21	0.45
1:A:1200:MET:HG2	1:A:1573:TYR:CG	2.52	0.45
2:B:1195:ARG:NH1	2:B:1197:ARG:HD2	2.30	0.45
3:C:239:ILE:O	3:C:243:SER:OG	2.34	0.45
8:H:5:LEU:HB3	8:H:133:ASN:HB2	1.99	0.45
1:A:1055:ILE:CD1	1:A:1580:ARG:HH12	2.27	0.44
2:B:109:SER:O	2:B:119:ARG:HB3	2.16	0.44

*Continued on next page...*

Continued from previous page...

Atom-1	Atom-2	Interatomic distance (Å)	Clash overlap (Å)
2:B:968:ALA:HB2	2:B:996:PHE:CE2	2.52	0.44
2:B:1047:ARG:NH1	2:B:1067:GLY:HA2	2.31	0.44
2:B:1160:GLU:OE2	2:B:1164:GLY:HA2	2.17	0.44
5:E:97:VAL:HG13	5:E:127:ILE:HD13	1.99	0.44
5:E:164:LEU:HD21	5:E:175:LEU:HD21	1.99	0.44
8:H:114:VAL:HG22	8:H:125:LEU:HB2	1.98	0.44
11:K:71:THR:OG1	11:K:72:LEU:N	2.50	0.44
1:A:900:VAL:HG11	1:A:949:GLN:HB2	1.99	0.44
8:H:130:ARG:H	8:H:130:ARG:HD2	1.82	0.44
13:M:75:GLN:HB2	14:N:58:PHE:CZ	2.52	0.44
1:A:879:LEU:HB2	1:A:972:TYR:CE1	2.52	0.44
1:A:1443:GLN:HE22	1:A:1462:PHE:H	1.65	0.44
1:A:1659:LYS:HE3	6:F:133:VAL:HG21	1.99	0.44
3:C:85:PHE:HE1	3:C:97:LEU:HD12	1.82	0.44
1:A:834:ARG:HH12	2:B:1008:HIS:CB	2.31	0.44
2:B:576:THR:HG23	2:B:577:PHE:H	1.82	0.44
3:C:41:GLU:HA	11:K:134:LYS:NZ	2.32	0.44
7:G:149:ILE:HG23	7:G:153:PHE:HB2	2.00	0.44
14:N:157:ARG:HD3	14:N:157:ARG:H	1.82	0.44
1:A:16:PHE:HE2	1:A:1625:ALA:HB1	1.83	0.44
1:A:462:LYS:H	1:A:466:LEU:HB2	1.82	0.44
1:A:363:PRO:HG2	1:A:368:ARG:HD3	1.98	0.44
1:A:694:GLN:HG3	11:K:77:ARG:HH12	1.82	0.44
1:A:734:THR:O	1:A:738:ASN:ND2	2.51	0.44
1:A:1113:HIS:HA	1:A:1116:GLN:HB3	2.00	0.44
2:B:204:ARG:HD2	2:B:205:MET:O	2.18	0.44
2:B:260:PHE:HD2	2:B:273:VAL:HA	1.82	0.44
2:B:885:VAL:HG22	2:B:903:ILE:HG13	1.98	0.44
2:B:947:ILE:HG21	2:B:1033:TYR:CE2	2.52	0.44
2:B:1020:GLU:OE2	3:C:61:THR:OG1	2.22	0.44
3:C:85:PHE:CE2	3:C:98:ALA:HB2	2.53	0.44
4:D:20:VAL:HG12	4:D:21:VAL:HG23	1.99	0.44
7:G:59:GLN:CG	7:G:63:LYS:HZ3	2.30	0.44
2:B:226:GLY:HA2	2:B:229:TYR:CD2	2.53	0.44
2:B:862:PHE:HB2	2:B:869:THR:HG22	1.98	0.44
2:B:1064:LYS:C	2:B:1066:HIS:H	2.20	0.44
3:C:55:ASP:HA	3:C:299:ILE:HA	1.99	0.44
6:F:57:ASP:OD1	6:F:57:ASP:N	2.50	0.44
1:A:831:ASP:OD2	1:A:918:LYS:HE3	2.18	0.44
1:A:964:LYS:NZ	1:A:973:GLU:HB3	2.33	0.44
2:B:197:ASN:OD1	2:B:198:GLY:N	2.50	0.44

Continued on next page...

Continued from previous page...

Atom-1	Atom-2	Interatomic distance (Å)	Clash overlap (Å)
2:B:920:ARG:NH1	2:B:1032:TYR:CD1	2.86	0.44
2:B:154:GLU:OE2	2:B:156:ARG:HG3	2.17	0.44
2:B:359:LEU:HB2	2:B:374:LEU:HD21	2.00	0.44
2:B:564:ILE:HD11	2:B:620:LEU:HD22	2.00	0.44
2:B:704:THR:HA	2:B:920:ARG:HD2	2.00	0.44
14:N:158:LYS:HD3	14:N:161:PRO:HD3	1.99	0.44
1:A:703:GLU:HA	11:K:53:ALA:HB2	2.00	0.43
7:G:62:MET:HA	7:G:66:LEU:HB3	2.00	0.43
1:A:464:GLU:OE2	17:T:13:DT:H3'	2.18	0.43
1:A:876:LEU:HA	1:A:972:TYR:CZ	2.53	0.43
2:B:782:ASP:HA	2:B:786:ALA:HB3	1.99	0.43
2:B:1039:MET:HG2	2:B:1042:ASP:H	1.84	0.43
1:A:1151:ASN:HB2	1:A:1153:LYS:NZ	2.33	0.43
2:B:521:LEU:HG	2:B:522:PRO:HD2	2.01	0.43
2:B:1063:ARG:C	2:B:1066:HIS:H	2.22	0.43
9:I:10:CYS:SG	9:I:11:LEU:N	2.91	0.43
1:A:585:ASP:OD1	1:A:586:VAL:N	2.47	0.43
1:A:744:MET:HG2	1:A:1078:LYS:HG2	2.00	0.43
1:A:1556:GLU:OE2	5:E:198:ILE:HG21	2.17	0.43
5:E:100:ILE:HG23	5:E:105:PHE:HB2	2.00	0.43
8:H:11:GLN:HE21	8:H:29:ALA:HB3	1.82	0.43
13:M:20:SER:HG	14:N:38:PHE:HZ	1.66	0.43
1:A:747:ILE:HD11	1:A:801:TYR:CE2	2.53	0.43
1:A:1224:GLU:HG3	1:A:1234:LYS:NZ	2.33	0.43
2:B:327:LEU:HG	2:B:350:GLY:HA3	2.01	0.43
1:A:248:PHE:HD1	1:A:442:LYS:CG	2.14	0.43
1:A:432:ASN:HD21	1:A:444:GLN:H	1.67	0.43
1:A:522:ALA:HA	1:A:532:GLY:HA2	2.01	0.43
1:A:669:LEU:HD23	1:A:786:TYR:CE2	2.54	0.43
3:C:240:LYS:HD2	3:C:263:ASP:N	2.33	0.43
8:H:40:LEU:HD22	8:H:41:ASP:H	1.83	0.43
16:S:11:DG:H1	17:T:28:DC:H42	1.66	0.43
1:A:481:ARG:HE	1:A:632:GLU:HG2	1.84	0.43
1:A:947:LEU:HB3	1:A:982:VAL:HG21	2.01	0.43
1:A:1057:ILE:H	1:A:1057:ILE:HD12	1.84	0.43
1:A:1535:PHE:HD1	1:A:1536:ILE:HG12	1.84	0.43
2:B:129:ARG:HA	2:B:129:ARG:HD2	1.88	0.43
2:B:130:LEU:HD11	2:B:902:SER:HB2	2.01	0.43
2:B:383:SER:OG	2:B:389:CYS:SG	2.63	0.43
2:B:520:LEU:HG	2:B:530:PRO:HB3	2.01	0.43
6:F:82:THR:CG2	6:F:136:ARG:HH12	2.32	0.43

Continued on next page...

*Continued from previous page...*

Atom-1	Atom-2	Interatomic distance (Å)	Clash overlap (Å)
14:N:170:HIS:CG	14:N:171:PHE:H	2.37	0.43
1:A:728:GLY:HA2	1:A:731:ILE:HG22	2.00	0.43
2:B:705:PRO:HD3	2:B:920:ARG:HD2	1.99	0.43
2:B:840:LEU:HD23	2:B:857:PRO:HB2	2.00	0.43
11:K:62:SER:OG	11:K:104:ARG:NH1	2.45	0.43
14:N:80:MET:HB3	14:N:87:TYR:HB2	2.00	0.43
1:A:247:GLY:C	1:A:248:PHE:CD2	2.92	0.43
1:A:315:ILE:HG13	1:A:316:LEU:H	1.83	0.43
2:B:108:MET:HB3	2:B:118:GLU:HG2	1.99	0.43
2:B:934:ILE:H	2:B:934:ILE:HG13	1.58	0.43
1:A:834:ARG:HH12	2:B:1008:HIS:HB3	1.83	0.43
1:A:1535:PHE:CD1	1:A:1536:ILE:HG12	2.53	0.43
2:B:561:ILE:HG12	2:B:620:LEU:HG	2.01	0.43
2:B:683:ASN:HD21	14:N:148:ILE:HD11	1.82	0.43
2:B:1151:ILE:H	2:B:1151:ILE:HG13	1.73	0.43
1:A:6:PRO:HB3	7:G:111:THR:HG21	2.01	0.42
1:A:481:ARG:HB3	2:B:1045:GLN:HB2	1.99	0.42
1:A:865:ASP:C	1:A:866:LYS:CG	2.86	0.42
2:B:120:LYS:HG3	2:B:171:HIS:CE1	2.54	0.42
2:B:1077:ASP:HA	2:B:1080:ILE:HG22	2.01	0.42
5:E:109:ILE:HG22	5:E:133:GLU:HB2	2.01	0.42
10:J:36:LEU:HD11	10:J:51:LEU:HB2	2.00	0.42
14:N:41:ASN:ND2	14:N:51:GLN:OE1	2.52	0.42
16:S:36:DC:H6	16:S:36:DC:H2'	1.72	0.42
1:A:19:LEU:HD22	2:B:1195:ARG:HB2	2.01	0.42
1:A:210:ALA:CB	1:A:1591:ARG:HH12	2.31	0.42
1:A:462:LYS:HG3	1:A:463:LYS:N	2.31	0.42
2:B:137:LEU:HB2	2:B:161:LEU:HD13	2.00	0.42
3:C:249:LYS:HE3	3:C:249:LYS:HB3	1.89	0.42
10:J:9:SER:HB2	10:J:45:CYS:HB2	2.00	0.42
1:A:1105:ARG:NH1	1:A:1142:ASP:OD1	2.46	0.42
1:A:1646:LEU:HD11	7:G:109:PRO:HB2	2.01	0.42
2:B:74:PHE:CE2	2:B:94:LYS:HB3	2.54	0.42
2:B:289:PHE:HZ	2:B:303:THR:HG23	1.83	0.42
2:B:656:LEU:HB2	2:B:657:PRO:HD3	2.01	0.42
2:B:733:LEU:HD11	2:B:804:TYR:CZ	2.55	0.42
5:E:147:HIS:HB3	5:E:150:VAL:HG22	2.01	0.42
12:L:31:CYS:HB3	12:L:36:SER:H	1.84	0.42
13:M:78:VAL:O	13:M:91:TYR:HB2	2.20	0.42
15:R:13:G:H2'	15:R:14:A:H8	1.85	0.42
1:A:1657:LEU:HD13	7:G:106:LYS:HA	2.01	0.42

*Continued on next page...*

*Continued from previous page...*

Atom-1	Atom-2	Interatomic distance (Å)	Clash overlap (Å)
11:K:46:LYS:HA	11:K:66:VAL:HG22	2.00	0.42
11:K:51:THR:HA	11:K:54:THR:HG22	2.01	0.42
12:L:47:ARG:NH1	12:L:51:CYS:O	2.52	0.42
14:N:76:SER:HB3	14:N:88:LYS:HZ1	1.84	0.42
1:A:525:ASN:ND2	1:A:531:PRO:O	2.52	0.42
1:A:697:TYR:CZ	11:K:104:ARG:HB2	2.53	0.42
2:B:427:GLN:NE2	2:B:452:ARG:NH1	2.68	0.42
2:B:714:ARG:CZ	2:B:957:ARG:HG3	2.49	0.42
3:C:165:ARG:H	3:C:165:ARG:HD3	1.85	0.42
4:D:44:ILE:HD13	4:D:44:ILE:HA	1.92	0.42
5:E:197:LYS:HG3	5:E:211:TYR:HE1	1.84	0.42
14:N:29:PHE:CD2	14:N:30:LYS:HG2	2.55	0.42
1:A:103:LEU:HD13	1:A:240:SER:HB3	2.01	0.42
1:A:650:LEU:HD23	2:B:1084:THR:HB	2.01	0.42
2:B:199:ILE:HD12	2:B:487:VAL:HG13	2.01	0.42
2:B:730:GLY:HA2	2:B:765:PHE:CE1	2.55	0.42
2:B:803:MET:SD	2:B:909:ARG:NH1	2.92	0.42
2:B:941:THR:HG23	14:N:171:PHE:HE1	1.85	0.42
17:T:17:DC:H2'	17:T:18:DC:C6	2.54	0.42
1:A:250:LYS:CD	1:A:314:TYR:HD2	2.30	0.42
1:A:1180:ASN:ND2	6:F:86:THR:HB	2.35	0.42
2:B:585:CYS:SG	2:B:595:TRP:NE1	2.91	0.42
2:B:832:TRP:CZ2	2:B:869:THR:HG23	2.54	0.42
10:J:68:LYS:HG2	10:J:69:ARG:HD2	2.00	0.42
14:N:84:LYS:H	14:N:84:LYS:HD2	1.85	0.42
1:A:719:ILE:HD12	1:A:725:LEU:HB2	2.01	0.42
2:B:168:ASN:OD1	2:B:169:ARG:NH1	2.52	0.42
2:B:1047:ARG:CZ	2:B:1059:PRO:HB3	2.49	0.42
1:A:253:GLU:O	1:A:312:SER:N	2.53	0.42
1:A:764:SER:C	1:A:766:GLU:N	2.73	0.42
1:A:1609:SER:O	1:A:1613:MET:HG2	2.20	0.42
2:B:954:PHE:N	2:B:955:PRO:HD2	2.34	0.42
2:B:1158:ILE:HG21	2:B:1166:LYS:HZ2	1.85	0.42
17:T:9:DT:H2'	17:T:9:DT:OP2	2.20	0.42
1:A:960:MET:SD	2:B:521:LEU:HD21	2.60	0.42
1:A:1214:ASN:OD1	1:A:1215:VAL:N	2.51	0.42
1:A:1635:ASP:O	1:A:1648:ASN:ND2	2.52	0.42
2:B:258:VAL:HG23	2:B:273:VAL:HG11	2.01	0.42
2:B:991:THR:HG22	2:B:993:ALA:H	1.85	0.42
2:B:1013:MET:SD	2:B:1026:ILE:HD11	2.60	0.42
2:B:1063:ARG:HE	17:T:20:DG:P	2.42	0.42

*Continued on next page...*

Continued from previous page...

Atom-1	Atom-2	Interatomic distance (Å)	Clash overlap (Å)
3:C:169:PHE:CG	3:C:184:VAL:HB	2.55	0.42
5:E:54:GLN:HG2	5:E:57:MET:HE3	2.01	0.42
11:K:50:LEU:HD23	11:K:50:LEU:H	1.85	0.42
13:M:21:VAL:HB	14:N:38:PHE:HE2	1.85	0.42
1:A:756:LYS:HB2	1:A:759:TYR:CD1	2.55	0.41
1:A:1065:GLN:HB3	1:A:1068:PHE:HB3	2.01	0.41
9:I:12:ASP:CG	13:M:31:ARG:HH12	2.23	0.41
1:A:753:ASN:ND2	1:A:780:ILE:HG22	2.34	0.41
2:B:30:LYS:HG2	2:B:178:TYR:CG	2.55	0.41
2:B:332:ASP:OD1	2:B:335:ARG:NH2	2.43	0.41
2:B:909:ARG:HG2	2:B:1035:ARG:HH22	1.85	0.41
5:E:68:SER:HB3	5:E:75:MET:SD	2.60	0.41
5:E:80:VAL:HG22	5:E:109:ILE:HD11	2.02	0.41
17:T:35:DT:H2''	17:T:36:DG:C8	2.55	0.41
1:A:695:TYR:HE1	1:A:820:TYR:HA	1.85	0.41
2:B:264:TRP:CZ2	2:B:357:ILE:HD11	2.55	0.41
2:B:531:VAL:O	2:B:716:MET:HG2	2.21	0.41
3:C:61:THR:HG22	3:C:298:PHE:CZ	2.55	0.41
13:M:21:VAL:HG13	13:M:93:ALA:HB2	2.03	0.41
17:T:32:DT:H2''	17:T:33:DA:C8	2.54	0.41
1:A:181:LEU:HA	1:A:184:LYS:NZ	2.35	0.41
1:A:496:GLY:HA2	1:A:606:ARG:O	2.21	0.41
2:B:990:ASP:OD1	2:B:990:ASP:N	2.53	0.41
8:H:111:LEU:HD22	8:H:126:GLU:OE2	2.20	0.41
11:K:109:GLY:O	11:K:110:GLU:HG2	2.20	0.41
1:A:357:MET:H	1:A:357:MET:HG3	1.74	0.41
1:A:699:CYS:SG	1:A:816:LEU:HA	2.61	0.41
1:A:1648:ASN:OD1	1:A:1649:VAL:N	2.54	0.41
2:B:1004:GLY:HA3	14:N:170:HIS:CG	2.55	0.41
3:C:129:GLU:OE2	3:C:174:ARG:NH1	2.53	0.41
17:T:24:DA:H4'	17:T:25:DT:OP1	2.19	0.41
3:C:218:LYS:HB2	3:C:218:LYS:HE2	1.89	0.41
4:D:22:ILE:HD13	7:G:45:LEU:HB3	2.03	0.41
16:S:12:DT:H2''	16:S:13:DA:C8	2.55	0.41
1:A:470:HIS:CD2	2:B:1056:THR:HG21	2.56	0.41
1:A:582:LYS:HZ1	1:A:584:ARG:HH21	1.69	0.41
1:A:1104:TYR:CG	1:A:1119:LYS:NZ	2.88	0.41
2:B:701:ALA:O	2:B:704:THR:HG22	2.20	0.41
11:K:43:ASP:OD2	11:K:46:LYS:N	2.40	0.41
1:A:613:THR:HG23	1:A:615:ARG:NH2	2.36	0.41
2:B:322:ASN:ND2	13:M:104:SER:O	2.53	0.41

Continued on next page...

Continued from previous page...

Atom-1	Atom-2	Interatomic distance (Å)	Clash overlap (Å)
2:B:947:ILE:HG21	2:B:1033:TYR:HE2	1.85	0.41
3:C:136:LEU:HB3	3:C:204:LEU:HG	2.03	0.41
4:D:22:ILE:HD11	7:G:43:ILE:HD12	2.02	0.41
11:K:81:MET:SD	11:K:89:CYS:HB3	2.61	0.41
17:T:18:DC:H2'	17:T:19:DT:C6	2.56	0.41
1:A:399:LEU:HD23	1:A:422:ARG:CZ	2.51	0.41
1:A:498:PRO:HB3	1:A:611:GLU:O	2.21	0.41
1:A:525:ASN:OD1	1:A:529:LYS:HB3	2.21	0.41
1:A:603:HIS:CD2	1:A:653:THR:HB	2.56	0.41
1:A:652:ASN:ND2	1:A:654:ASP:OD1	2.53	0.41
1:A:784:SER:OG	1:A:785:GLN:OE1	2.34	0.41
1:A:854:GLY:HA2	1:A:899:LYS:NZ	2.36	0.41
2:B:161:LEU:HD21	2:B:413:LEU:HD21	2.02	0.41
2:B:181:VAL:HA	10:J:63:TYR:HE1	1.86	0.41
2:B:416:LYS:HD2	2:B:460:LYS:NZ	2.36	0.41
2:B:706:PHE:HB3	2:B:709:PHE:CD2	2.56	0.41
2:B:916:LYS:HD3	2:B:1038:HIS:CD2	2.56	0.41
3:C:42:VAL:HG12	11:K:138:LYS:NZ	2.36	0.41
5:E:38:PRO:HB2	5:E:40:GLU:HG3	2.01	0.41
7:G:234:ARG:HB3	7:G:246:ASP:HB3	2.02	0.41
13:M:17:ASP:OD1	13:M:17:ASP:N	2.54	0.41
1:A:1247:SER:H	1:A:1250:GLN:HB2	1.86	0.41
1:A:1308:VAL:HG11	1:A:1498:ILE:HG12	2.03	0.41
1:A:1322:ILE:HG23	1:A:1456:PHE:HZ	1.86	0.41
2:B:1106:GLU:OE1	2:B:1172:GLU:HB2	2.21	0.41
3:C:209:ILE:HG13	3:C:210:LEU:H	1.86	0.41
6:F:116:ASP:O	6:F:120:ILE:HG12	2.21	0.41
14:N:117:GLU:OE2	14:N:120:LYS:HD3	2.20	0.41
1:A:196:ALA:HA	1:A:201:ARG:HH21	1.86	0.40
1:A:250:LYS:O	1:A:252:PHE:CD1	2.74	0.40
1:A:474:LYS:NZ	2:B:1093:LEU:HD23	2.36	0.40
1:A:508:PRO:HB3	1:A:578:TYR:CE1	2.56	0.40
2:B:995:TYR:HE1	14:N:162:LYS:HG2	1.87	0.40
2:B:1093:LEU:HD22	2:B:1179:PRO:HG3	2.03	0.40
4:D:90:LYS:O	4:D:94:ARG:HG2	2.21	0.40
14:N:170:HIS:CD2	14:N:171:PHE:H	2.38	0.40
1:A:677:GLY:O	1:A:681:THR:OG1	2.37	0.40
1:A:1580:ARG:HH11	5:E:204:THR:CG2	2.34	0.40
2:B:130:LEU:HD13	2:B:808:LYS:HE2	2.02	0.40
2:B:651:ARG:HH11	2:B:695:ASN:ND2	2.20	0.40
10:J:30:LEU:HD13	10:J:31:ASP:N	2.35	0.40

Continued on next page...



Continued from previous page...

Atom-1	Atom-2	Interatomic distance (Å)	Clash overlap (Å)
1:A:248:PHE:O	1:A:249:THR:CB	2.70	0.40
1:A:1098:SER:HA	1:A:1123:VAL:HG11	2.04	0.40
1:A:1502:PRO:O	1:A:1525:ASN:ND2	2.52	0.40
2:B:882:ILE:HG12	2:B:905:TYR:HE1	1.86	0.40
2:B:962:MET:HG3	2:B:1031:VAL:HG21	2.03	0.40
8:H:37:LYS:HZ1	8:H:124:ARG:HH12	1.66	0.40
13:M:22:ALA:O	14:N:110:LEU:HG	2.22	0.40
1:A:232:LYS:HB2	1:A:239:PHE:CE1	2.56	0.40
1:A:493:ASN:HA	1:A:653:THR:HG21	2.03	0.40
1:A:697:TYR:CE1	11:K:104:ARG:HB2	2.56	0.40
2:B:566:TYR:CD2	13:M:73:SER:HB3	2.53	0.40
4:D:43:PHE:HA	4:D:46:GLU:HB2	2.03	0.40
1:A:1:MET:HG3	2:B:1098:TYR:CZ	2.56	0.40
1:A:964:LYS:NZ	1:A:970:LYS:O	2.30	0.40
1:A:1189:ALA:HB2	1:A:1584:LEU:HD13	2.03	0.40
2:B:252:TYR:CD1	2:B:385:VAL:HG11	2.56	0.40
5:E:62:ALA:HB3	5:E:78:LEU:HB3	2.03	0.40
8:H:12:VAL:HG13	8:H:26:ILE:HG23	2.04	0.40
10:J:30:LEU:HD11	10:J:34:THR:HB	2.02	0.40

There are no symmetry-related clashes.

## 5.3 Torsion angles [i](#)

### 5.3.1 Protein backbone [i](#)

In the following table, the Percentiles column shows the percent Ramachandran outliers of the chain as a percentile score with respect to all PDB entries followed by that with respect to all EM entries.

The Analysed column shows the number of residues for which the backbone conformation was analysed, and the total number of residues.

Mol	Chain	Analysed	Favoured	Allowed	Outliers	Percentiles	
1	A	1437/1664 (86%)	1345 (94%)	85 (6%)	7 (0%)	29	67
2	B	1160/1203 (96%)	1098 (95%)	62 (5%)	0	100	100
3	C	300/335 (90%)	293 (98%)	7 (2%)	0	100	100
4	D	55/137 (40%)	55 (100%)	0	0	100	100
5	E	212/215 (99%)	206 (97%)	6 (3%)	0	100	100

Continued on next page...



Continued from previous page...

Mol	Chain	Analysed	Favoured	Allowed	Outliers	Percentiles	
6	F	98/155 (63%)	97 (99%)	1 (1%)	0	100	100
7	G	179/326 (55%)	179 (100%)	0	0	100	100
8	H	130/146 (89%)	125 (96%)	5 (4%)	0	100	100
9	I	62/125 (50%)	57 (92%)	5 (8%)	0	100	100
10	J	67/70 (96%)	60 (90%)	7 (10%)	0	100	100
11	K	98/142 (69%)	93 (95%)	5 (5%)	0	100	100
12	L	41/70 (59%)	40 (98%)	1 (2%)	0	100	100
13	M	97/415 (23%)	86 (89%)	11 (11%)	0	100	100
14	N	127/233 (54%)	101 (80%)	25 (20%)	1 (1%)	19	58
All	All	4063/5236 (78%)	3835 (94%)	220 (5%)	8 (0%)	50	79

All (8) Ramachandran outliers are listed below:

Mol	Chain	Res	Type
1	A	250	LYS
1	A	227	LEU
1	A	248	PHE
1	A	251	ILE
14	N	148	ILE
1	A	249	THR
1	A	451	VAL
1	A	765	LEU

### 5.3.2 Protein sidechains [i](#)

In the following table, the Percentiles column shows the percent sidechain outliers of the chain as a percentile score with respect to all PDB entries followed by that with respect to all EM entries.

The Analysed column shows the number of residues for which the sidechain conformation was analysed, and the total number of residues.

Mol	Chain	Analysed	Rotameric	Outliers	Percentiles	
1	A	1284/1465 (88%)	1263 (98%)	21 (2%)	62	79
2	B	1025/1053 (97%)	1009 (98%)	16 (2%)	62	79
3	C	269/296 (91%)	266 (99%)	3 (1%)	73	85
4	D	56/116 (48%)	56 (100%)	0	100	100

Continued on next page...

*Continued from previous page...*

Mol	Chain	Analysed	Rotameric	Outliers	Percentiles	
5	E	196/197 (100%)	190 (97%)	6 (3%)	40	63
6	F	90/137 (66%)	90 (100%)	0	100	100
7	G	166/291 (57%)	164 (99%)	2 (1%)	71	84
8	H	117/128 (91%)	114 (97%)	3 (3%)	46	67
9	I	56/110 (51%)	54 (96%)	2 (4%)	35	61
10	J	64/65 (98%)	59 (92%)	5 (8%)	12	39
11	K	90/130 (69%)	89 (99%)	1 (1%)	73	85
12	L	38/57 (67%)	37 (97%)	1 (3%)	46	67
13	M	91/371 (24%)	87 (96%)	4 (4%)	28	55
14	N	125/220 (57%)	120 (96%)	5 (4%)	31	57
All	All	3667/4636 (79%)	3598 (98%)	69 (2%)	59	75

All (69) residues with a non-rotameric sidechain are listed below:

Mol	Chain	Res	Type
1	A	111	LYS
1	A	227	LEU
1	A	316	LEU
1	A	348	LYS
1	A	397	ARG
1	A	417	ARG
1	A	463	LYS
1	A	570	THR
1	A	689	ARG
1	A	694	GLN
1	A	709	ARG
1	A	729	LYS
1	A	930	LEU
1	A	1060	GLU
1	A	1072	ASN
1	A	1079	LYS
1	A	1119	LYS
1	A	1124	LEU
1	A	1300	ASN
1	A	1446	ARG
1	A	1600	ARG
2	B	17	ARG
2	B	21	ARG

*Continued on next page...*

*Continued from previous page...*

<b>Mol</b>	<b>Chain</b>	<b>Res</b>	<b>Type</b>
2	B	37	LEU
2	B	225	ARG
2	B	478	LEU
2	B	591	LYS
2	B	651	ARG
2	B	692	THR
2	B	718	GLN
2	B	783	MET
2	B	1063	ARG
2	B	1084	THR
2	B	1117	VAL
2	B	1129	ARG
2	B	1134	ARG
2	B	1155	ASP
3	C	94	ASP
3	C	165	ARG
3	C	290	LYS
5	E	57	MET
5	E	91	LYS
5	E	93	MET
5	E	113	GLN
5	E	124	VAL
5	E	177	ARG
7	G	10	ASN
7	G	126	GLN
8	H	116	TYR
8	H	130	ARG
8	H	146	ARG
9	I	17	LEU
9	I	19	ASN
10	J	30	LEU
10	J	39	LEU
10	J	46	CYS
10	J	48	ARG
10	J	64	ASN
11	K	134	LYS
12	L	47	ARG
13	M	26	PHE
13	M	31	ARG
13	M	52	VAL
13	M	53	LEU
14	N	84	LYS

*Continued on next page...*

*Continued from previous page...*

Mol	Chain	Res	Type
14	N	116	LYS
14	N	120	LYS
14	N	152	LYS
14	N	157	ARG

Sometimes sidechains can be flipped to improve hydrogen bonding and reduce clashes. All (42) such sidechains are listed below:

Mol	Chain	Res	Type
1	A	332	GLN
1	A	344	ASN
1	A	470	HIS
1	A	603	HIS
1	A	656	GLN
1	A	694	GLN
1	A	748	ASN
1	A	795	HIS
1	A	798	HIS
1	A	926	GLN
1	A	950	GLN
1	A	1026	GLN
1	A	1314	GLN
1	A	1443	GLN
2	B	128	GLN
2	B	213	HIS
2	B	398	GLN
2	B	427	GLN
2	B	492	ASN
2	B	547	HIS
2	B	646	HIS
2	B	682	GLN
2	B	770	ASN
2	B	824	HIS
2	B	896	GLN
2	B	923	GLN
3	C	99	HIS
3	C	130	ASN
3	C	232	GLN
3	C	301	ASN
4	D	29	GLN
5	E	113	GLN
7	G	56	ASN
7	G	59	GLN

*Continued on next page...*

*Continued from previous page...*

Mol	Chain	Res	Type
7	G	64	GLN
7	G	121	ASN
7	G	140	GLN
9	I	19	ASN
9	I	32	GLN
10	J	64	ASN
11	K	106	GLN
12	L	53	HIS

### 5.3.3 RNA [i](#)

Mol	Chain	Analysed	Backbone Outliers	Pucker Outliers
15	R	12/20 (60%)	3 (25%)	2 (16%)

All (3) RNA backbone outliers are listed below:

Mol	Chain	Res	Type
15	R	10	A
15	R	11	A
15	R	13	G

All (2) RNA pucker outliers are listed below:

Mol	Chain	Res	Type
15	R	10	A
15	R	12	A

## 5.4 Non-standard residues in protein, DNA, RNA chains [i](#)

There are no non-standard protein/DNA/RNA residues in this entry.

## 5.5 Carbohydrates [i](#)

There are no monosaccharides in this entry.

## 5.6 Ligand geometry [i](#)

Of 6 ligands modelled in this entry, 6 are monoatomic - leaving 0 for Mogul analysis.

There are no bond length outliers.

There are no bond angle outliers.

There are no chirality outliers.

There are no torsion outliers.

There are no ring outliers.

No monomer is involved in short contacts.

## 5.7 Other polymers [i](#)

There are no such residues in this entry.

## 5.8 Polymer linkage issues [i](#)

There are no chain breaks in this entry.

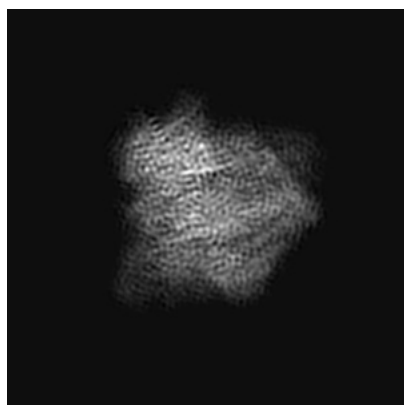
## 6 Map visualisation [i](#)

This section contains visualisations of the EMDB entry EMD-3447. These allow visual inspection of the internal detail of the map and identification of artifacts.

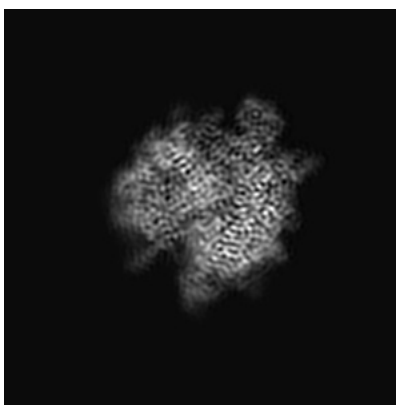
No raw map or half-maps were deposited for this entry and therefore no images, graphs, etc. pertaining to the raw map can be shown.

### 6.1 Orthogonal projections [i](#)

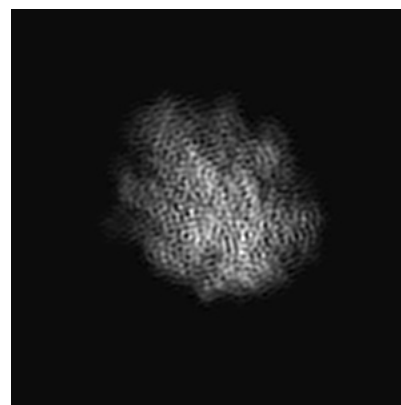
#### 6.1.1 Primary map



X



Y

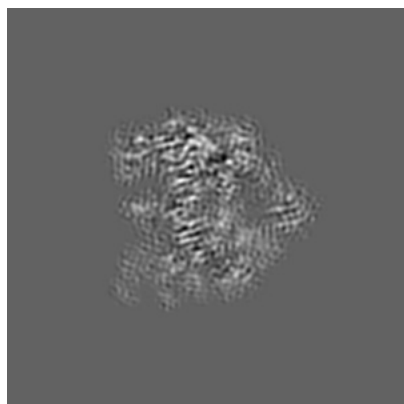


Z

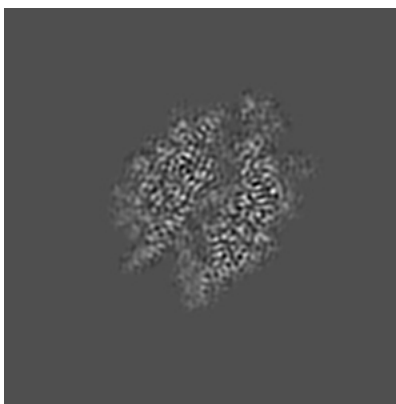
The images above show the map projected in three orthogonal directions.

### 6.2 Central slices [i](#)

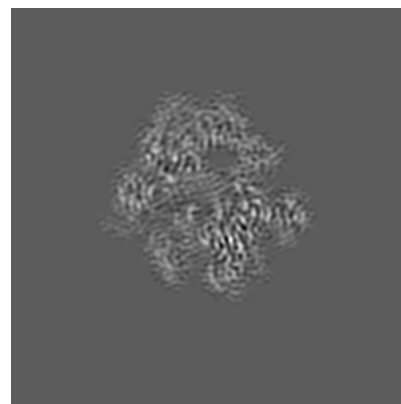
#### 6.2.1 Primary map



X Index: 100



Y Index: 100

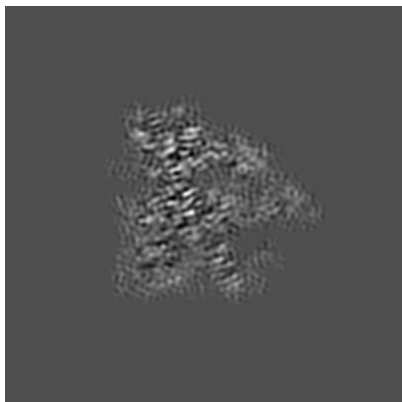


Z Index: 100

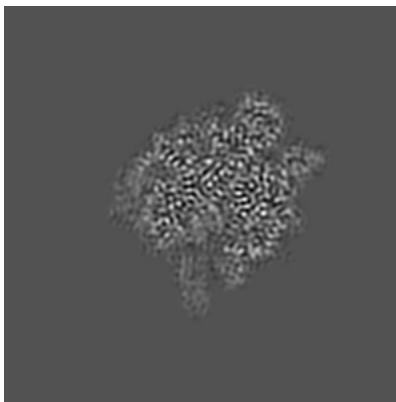
The images above show central slices of the map in three orthogonal directions.

## 6.3 Largest variance slices [i](#)

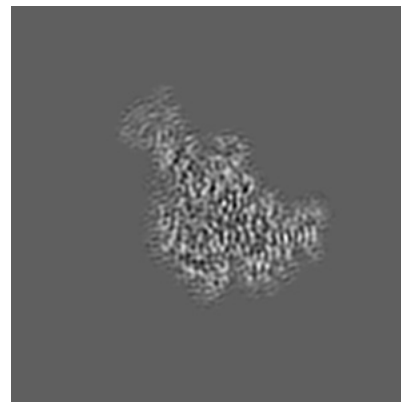
### 6.3.1 Primary map



X Index: 113



Y Index: 89

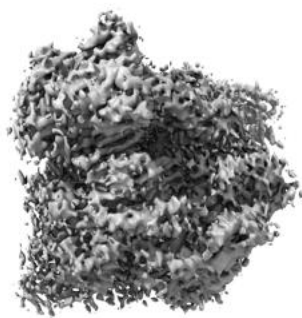


Z Index: 125

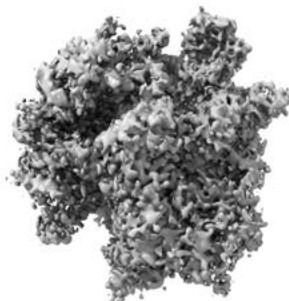
The images above show the largest variance slices of the map in three orthogonal directions.

## 6.4 Orthogonal surface views [i](#)

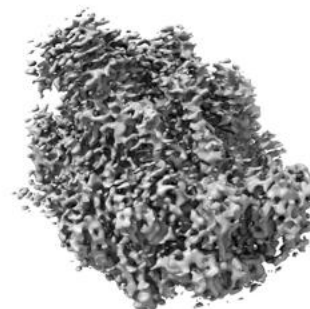
### 6.4.1 Primary map



X



Y



Z

The images above show the 3D surface view of the map at the recommended contour level 0.03. These images, in conjunction with the slice images, may facilitate assessment of whether an appropriate contour level has been provided.



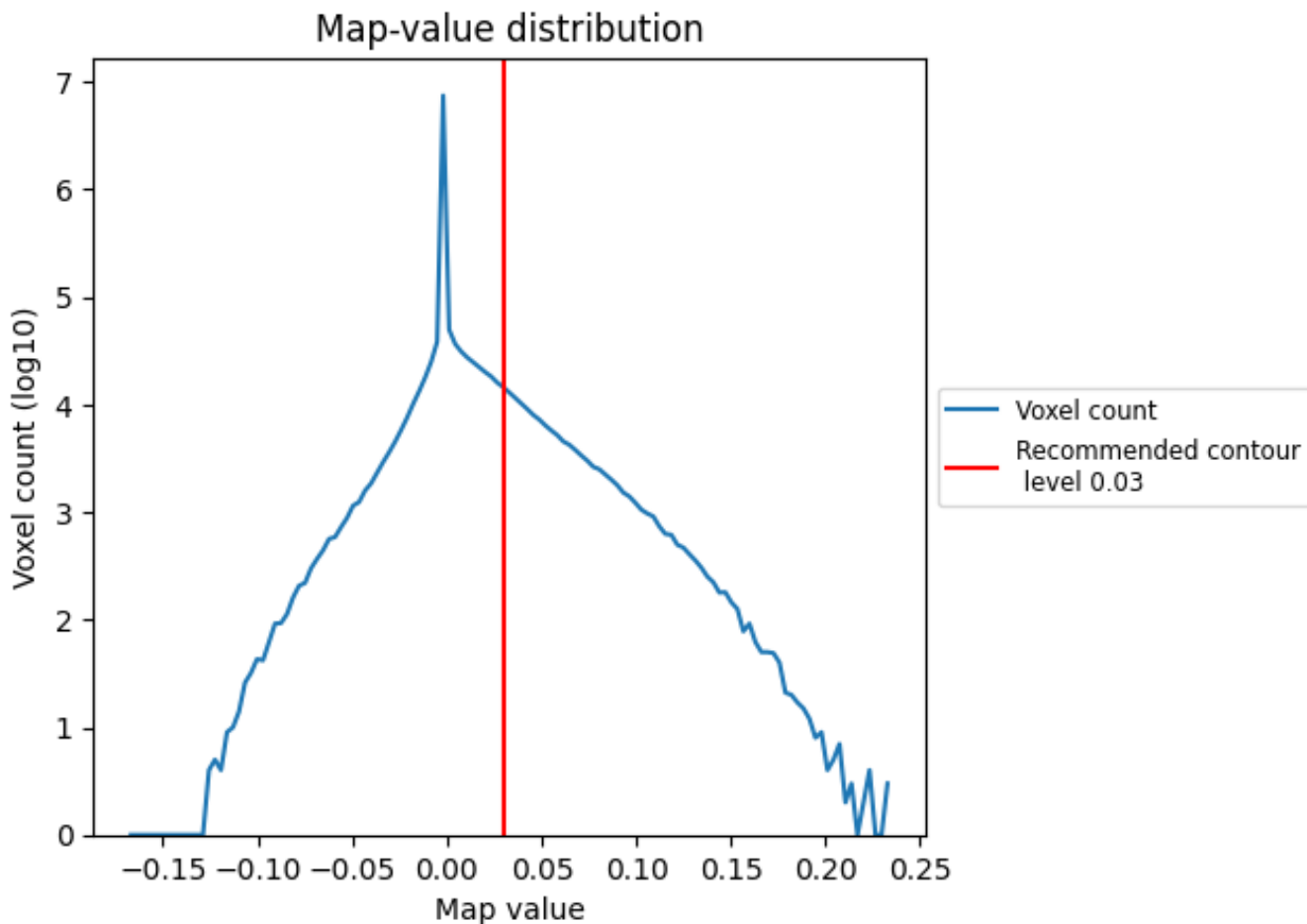
## 6.5 Mask visualisation

This section was not generated. No masks/segmentation were deposited.

## 7 Map analysis [i](#)

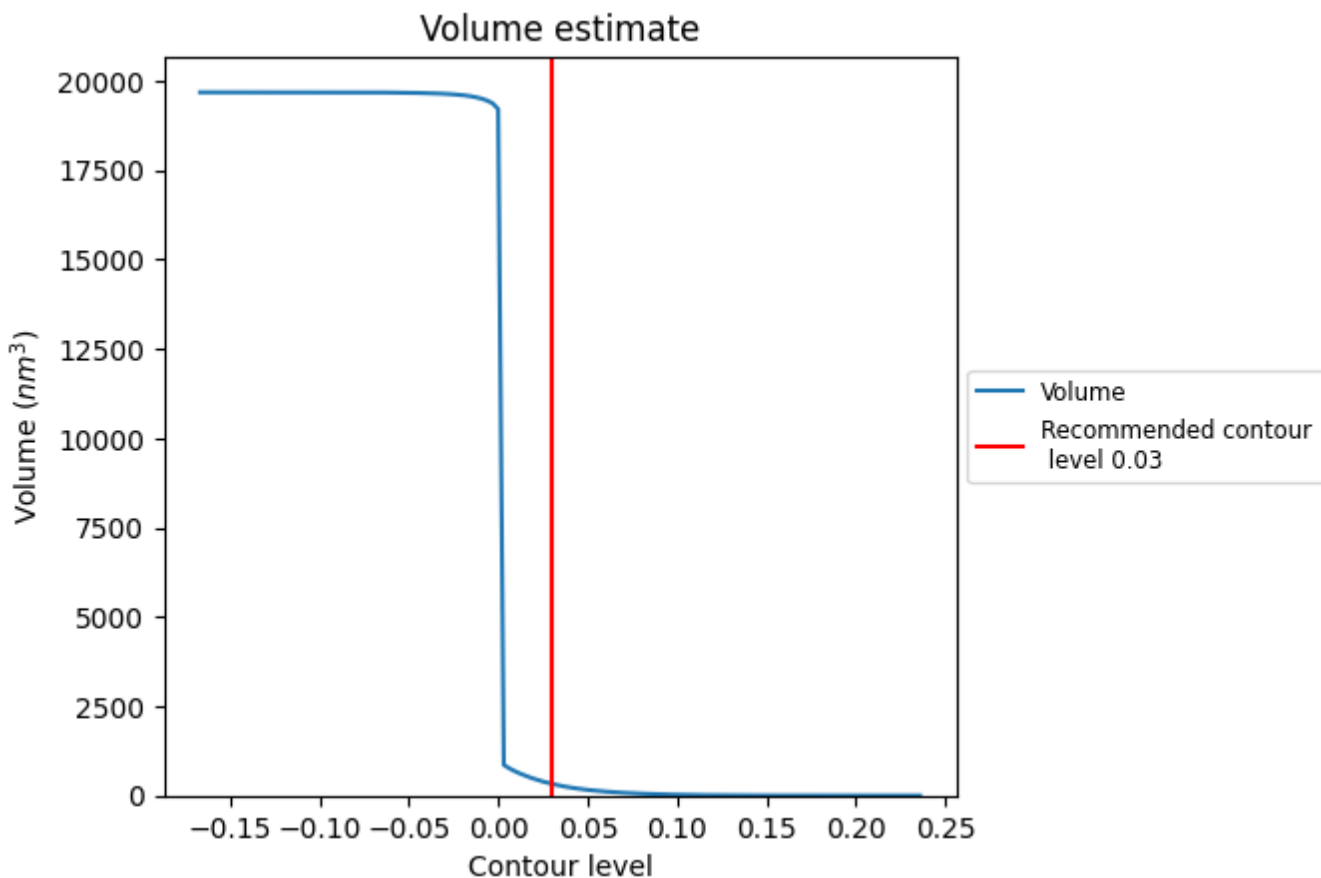
This section contains the results of statistical analysis of the map.

### 7.1 Map-value distribution [i](#)



The map-value distribution is plotted in 128 intervals along the x-axis. The y-axis is logarithmic. A spike in this graph at zero usually indicates that the volume has been masked.

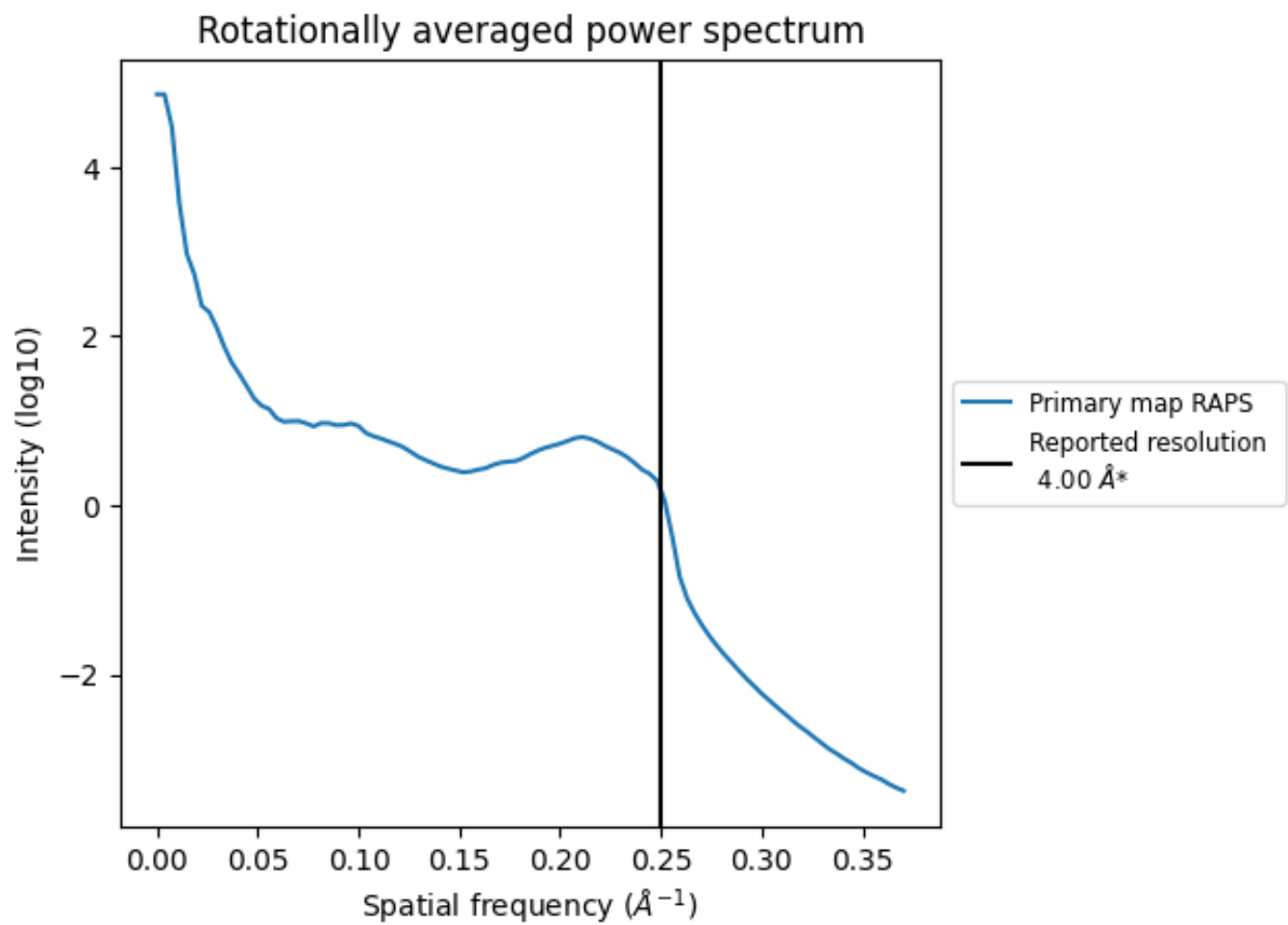
## 7.2 Volume estimate [i](#)



The volume at the recommended contour level is 328 nm<sup>3</sup>; this corresponds to an approximate mass of 296 kDa.

The volume estimate graph shows how the enclosed volume varies with the contour level. The recommended contour level is shown as a vertical line and the intersection between the line and the curve gives the volume of the enclosed surface at the given level.

### 7.3 Rotationally averaged power spectrum [i](#)



\*Reported resolution corresponds to spatial frequency of  $0.250 \text{\AA}^{-1}$

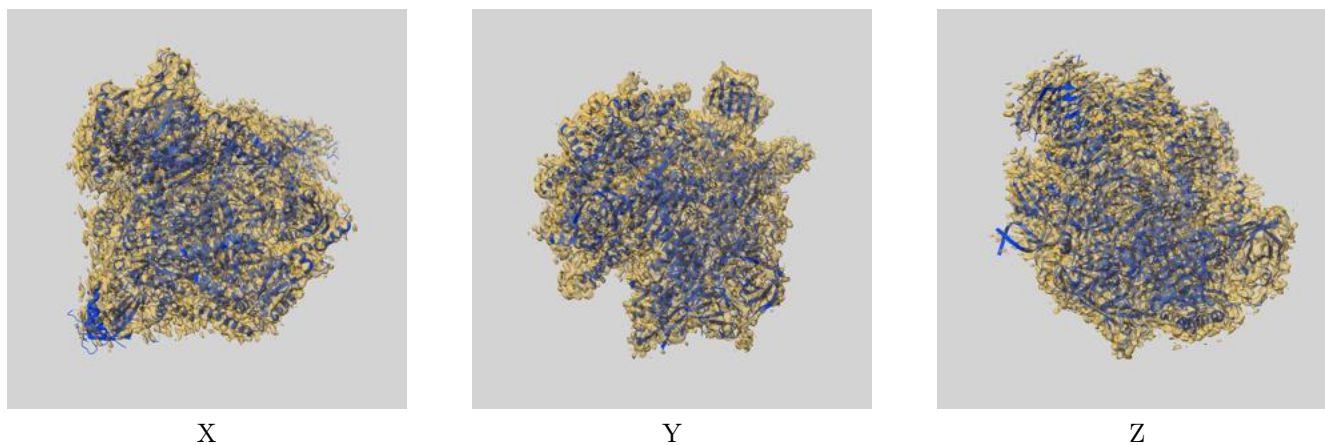
## 8 Fourier-Shell correlation

This section was not generated. No FSC curve or half-maps provided.

## 9 Map-model fit [i](#)

This section contains information regarding the fit between EMDB map EMD-3447 and PDB model 5M5X. Per-residue inclusion information can be found in section 3 on page 7.

### 9.1 Map-model overlay [i](#)



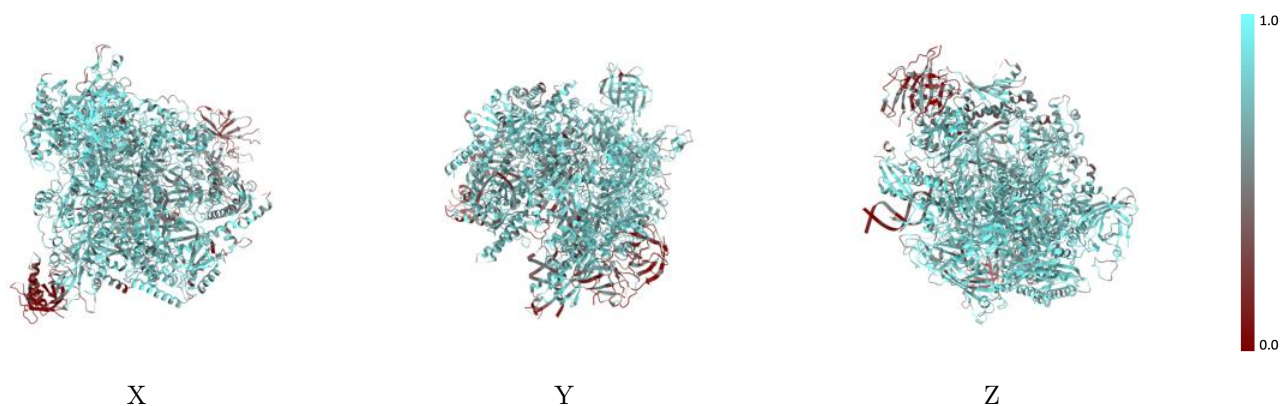
The images above show the 3D surface view of the map at the recommended contour level 0.03 at 50% transparency in yellow overlaid with a ribbon representation of the model coloured in blue. These images allow for the visual assessment of the quality of fit between the atomic model and the map.

## 9.2 Q-score mapped to coordinate model [i](#)



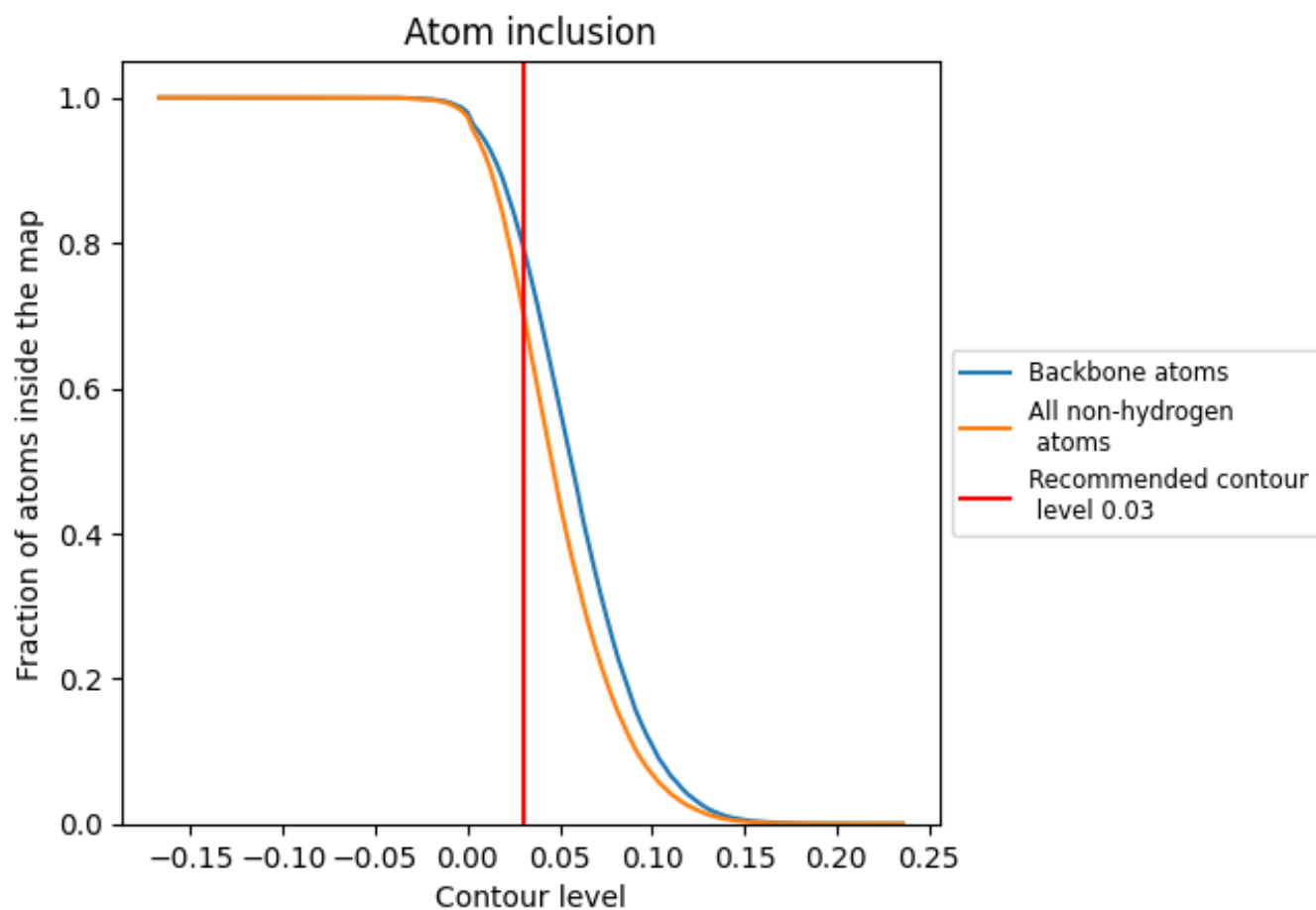
The images above show the model with each residue coloured according to its Q-score. This shows their resolvability in the map with higher Q-score values reflecting better resolvability. Please note: Q-score is calculating the resolvability of atoms, and thus high values are only expected at resolutions at which atoms can be resolved. Low Q-score values may therefore be expected for many entries.

## 9.3 Atom inclusion mapped to coordinate model [i](#)



The images above show the model with each residue coloured according to its atom inclusion. This shows to what extent they are inside the map at the recommended contour level (0.03).

## 9.4 Atom inclusion [i](#)







































At the recommended contour level, 80% of all backbone atoms, 71% of all non-hydrogen atoms, are inside the map.



## 9.5 Map-model fit summary

The table lists the average atom inclusion at the recommended contour level (0.03) and Q-score for the entire model and for each chain.

Chain	Atom inclusion	Q-score
All	 0.7085	 0.3020
A	 0.7572	 0.3280
B	 0.7800	 0.3270
C	 0.7852	 0.3500
D	 0.3132	 0.1880
E	 0.7582	 0.3060
F	 0.7715	 0.3320
G	 0.3511	 0.1460
H	 0.7631	 0.3410
I	 0.5638	 0.2170
J	 0.8442	 0.3870
K	 0.7990	 0.3260
L	 0.8163	 0.3480
M	 0.3818	 0.1700
N	 0.3098	 0.1640
R	 0.7295	 0.2470
S	 0.3972	 0.0960
T	 0.5439	 0.1790

