



Full wwPDB X-ray Structure Validation Report ⓘ

Oct 6, 2022 – 07:03 PM EDT

PDB ID : 5SIY
Title : Crystal Structure of human phosphodiesterase 10 in complex with 5-[(3R)-3-fluoropyrrolidin-1-yl]-N-methyl-2-(3-methylquinoxalin-2-yl)-N-(oxan-4-yl)pyrazolo[1,5-a]pyrimidin-7-amine
Authors : Joseph, C.; Benz, J.; Flohr, A.; Gobbi, L.; Rudolph, M.G.
Deposited on : 2022-02-01
Resolution : 2.03 Å(reported)

This is a Full wwPDB X-ray Structure Validation Report for a publicly released PDB entry.

We welcome your comments at validation@mail.wwpdb.org

A user guide is available at

<https://www.wwpdb.org/validation/2017/XrayValidationReportHelp>

with specific help available everywhere you see the ⓘ symbol.

The types of validation reports are described at

<http://www.wwpdb.org/validation/2017/FAQs#types>.

The following versions of software and data (see [references ⓘ](#)) were used in the production of this report:

MolProbity : 4.02b-467
Mogul : 1.8.5 (274361), CSD as541be (2020)
Xtriage (Phenix) : 1.13
EDS : 2.31.2
buster-report : 1.1.7 (2018)
Percentile statistics : 20191225.v01 (using entries in the PDB archive December 25th 2019)
Refmac : 5.8.0158
CCP4 : 7.0.044 (Gargrove)
Ideal geometry (proteins) : Engh & Huber (2001)
Ideal geometry (DNA, RNA) : Parkinson et al. (1996)
Validation Pipeline (wwPDB-VP) : 2.31.2

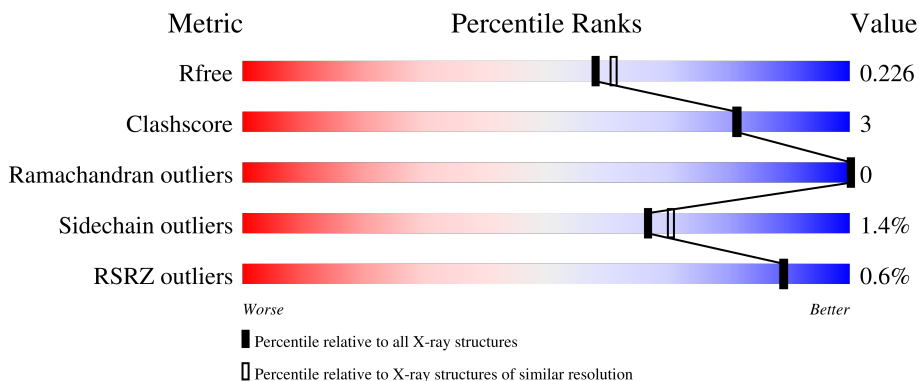
1 Overall quality at a glance

The following experimental techniques were used to determine the structure:

X-RAY DIFFRACTION

The reported resolution of this entry is 2.03 Å.

Percentile scores (ranging between 0-100) for global validation metrics of the entry are shown in the following graphic. The table shows the number of entries on which the scores are based.



Metric	Whole archive (#Entries)	Similar resolution (#Entries, resolution range(Å))
R_{free}	130704	10434 (2.04-2.00)
Clashscore	141614	11643 (2.04-2.00)
Ramachandran outliers	138981	11493 (2.04-2.00)
Sidechain outliers	138945	11492 (2.04-2.00)
RSRZ outliers	127900	10220 (2.04-2.00)

The table below summarises the geometric issues observed across the polymeric chains and their fit to the electron density. The red, orange, yellow and green segments of the lower bar indicate the fraction of residues that contain outliers for ≥ 3 , 2, 1 and 0 types of geometric quality criteria respectively. A grey segment represents the fraction of residues that are not modelled. The numeric value for each fraction is indicated below the corresponding segment, with a dot representing fractions $\leq 5\%$. The upper red bar (where present) indicates the fraction of residues that have poor fit to the electron density. The numeric value is given above the bar.

Mol	Chain	Length	Quality of chain
1	A	343	 84% 7% 9%
1	B	343	 85% 7% 8%
1	C	343	 85% 6% 8%
1	D	343	 85% 6% 9%

2 Entry composition

There are 5 unique types of molecules in this entry. The entry contains 10786 atoms, of which 0 are hydrogens and 0 are deuteriums.

In the tables below, the ZeroOcc column contains the number of atoms modelled with zero occupancy, the AltConf column contains the number of residues with at least one atom in alternate conformation and the Trace column contains the number of residues modelled with at most 2 atoms.

- Molecule 1 is a protein called cAMP and cAMP-inhibited cGMP 3',5'-cyclic phosphodiesterase 10A.

Mol	Chain	Residues	Atoms					ZeroOcc	AltConf	Trace
			Total	C	N	O	S			
1	A	312	Total 2543	C 1626	N 431	O 462	S 24	0	1	0
1	B	315	Total 2551	C 1630	N 434	O 463	S 24	0	0	0
1	C	314	Total 2551	C 1630	N 433	O 464	S 24	0	1	0
1	D	312	Total 2533	C 1620	N 431	O 458	S 24	0	1	0

There are 8 discrepancies between the modelled and reference sequences:

Chain	Residue	Modelled	Actual	Comment	Reference
A	447	GLY	-	expression tag	UNP Q9Y233
A	448	SER	-	expression tag	UNP Q9Y233
B	447	GLY	-	expression tag	UNP Q9Y233
B	448	SER	-	expression tag	UNP Q9Y233
C	447	GLY	-	expression tag	UNP Q9Y233
C	448	SER	-	expression tag	UNP Q9Y233
D	447	GLY	-	expression tag	UNP Q9Y233
D	448	SER	-	expression tag	UNP Q9Y233

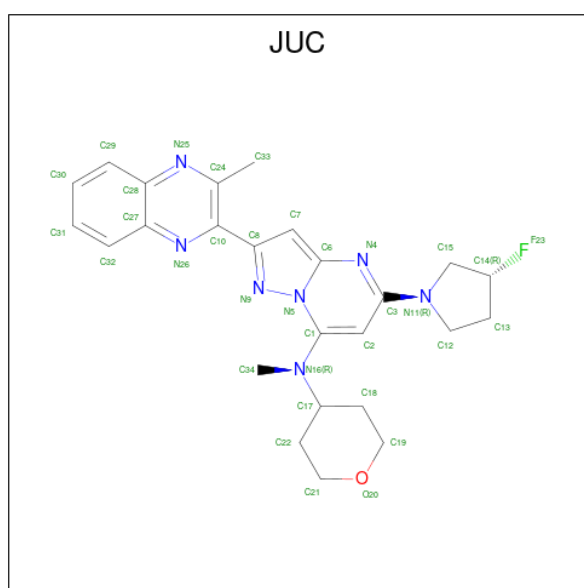
- Molecule 2 is ZINC ION (three-letter code: ZN) (formula: Zn).

Mol	Chain	Residues	Atoms		ZeroOcc	AltConf
2	A	1	Total 1	Zn 1	0	0
2	B	1	Total 1	Zn 1	0	0
2	C	1	Total 1	Zn 1	0	0
2	D	1	Total 1	Zn 1	0	0

- Molecule 3 is MAGNESIUM ION (three-letter code: MG) (formula: Mg).

Mol	Chain	Residues	Atoms	ZeroOcc	AltConf
3	A	1	Total Mg 1 1	0	0
3	B	1	Total Mg 1 1	0	0
3	C	1	Total Mg 1 1	0	0
3	D	1	Total Mg 1 1	0	0

- Molecule 4 is (8R)-5-[(3R)-3-fluoropyrrolidin-1-yl]-N-methyl-2-(3-methylquinoxalin-2-yl)-N-(oxan-4-yl)pyrazolo[1,5-a]pyrimidin-7-amine (three-letter code: JUC) (formula: C₂₅H₂₈FN₇O) (labeled as "Ligand of Interest" by depositor).



Mol	Chain	Residues	Atoms	ZeroOcc	AltConf
4	A	1	Total C F N O 34 25 1 7 1	0	0
4	B	1	Total C F N O 34 25 1 7 1	0	0
4	C	1	Total C F N O 34 25 1 7 1	0	0
4	D	1	Total C F N O 34 25 1 7 1	0	0

- Molecule 5 is water.

Mol	Chain	Residues	Atoms		ZeroOcc	AltConf
5	A	116	Total 116	O 116	0	0
5	B	140	Total 140	O 140	0	0
5	C	128	Total 128	O 128	0	0
5	D	80	Total 80	O 80	0	0

THR
ALA
THR
TRP
ILE
SER
SER
PRO
SER
VAL
ALA
GLN
LYS
ALA
ALA
ALA
SER
GLU
ASP

4 Data and refinement statistics i

Property	Value	Source
Space group	H 3	Depositor
Cell constants a, b, c, α , β , γ	134.91Å 134.91Å 236.56Å 90.00° 90.00° 120.00°	Depositor
Resolution (Å)	43.41 – 2.03 43.41 – 2.03	Depositor EDS
% Data completeness (in resolution range)	96.4 (43.41-2.03) 96.4 (43.41-2.03)	Depositor EDS
R_{merge}	0.08	Depositor
R_{sym}	(Not available)	Depositor
$\langle I/\sigma(I) \rangle$ ¹	1.39 (at 2.03Å)	Xtrriage
Refinement program	REFMAC 5.8.0258	Depositor
R, R_{free}	0.175 , 0.221 0.183 , 0.226	Depositor DCC
R_{free} test set	5166 reflections (4.99%)	wwPDB-VP
Wilson B-factor (Å ²)	33.8	Xtrriage
Anisotropy	0.034	Xtrriage
Bulk solvent k_{sol} (e/Å ³), B_{sol} (Å ²)	0.35 , 43.8	EDS
L-test for twinning ²	$\langle L \rangle = 0.49$, $\langle L^2 \rangle = 0.32$	Xtrriage
Estimated twinning fraction	0.028 for h,-h-k,-l	Xtrriage
F_o, F_c correlation	0.96	EDS
Total number of atoms	10786	wwPDB-VP
Average B, all atoms (Å ²)	42.0	wwPDB-VP

Xtrriage's analysis on translational NCS is as follows: *The largest off-origin peak in the Patterson function is 2.44% of the height of the origin peak. No significant pseudotranslation is detected.*

¹Intensities estimated from amplitudes.

²Theoretical values of $\langle |L| \rangle$, $\langle L^2 \rangle$ for acentric reflections are 0.5, 0.333 respectively for untwinned datasets, and 0.375, 0.2 for perfectly twinned datasets.

5 Model quality [i](#)

5.1 Standard geometry [i](#)

Bond lengths and bond angles in the following residue types are not validated in this section: CME, JUC, MG, ZN

The Z score for a bond length (or angle) is the number of standard deviations the observed value is removed from the expected value. A bond length (or angle) with $|Z| > 5$ is considered an outlier worth inspection. RMSZ is the root-mean-square of all Z scores of the bond lengths (or angles).

Mol	Chain	Bond lengths		Bond angles	
		RMSZ	# Z >5	RMSZ	# Z >5
1	A	0.82	0/2597	0.89	0/3514
1	B	0.78	1/2602 (0.0%)	0.89	0/3521
1	C	0.78	0/2605	0.90	1/3525 (0.0%)
1	D	0.79	0/2587	0.85	0/3501
All	All	0.79	1/10391 (0.0%)	0.88	1/14061 (0.0%)

All (1) bond length outliers are listed below:

Mol	Chain	Res	Type	Atoms	Z	Observed(Å)	Ideal(Å)
1	B	695	GLU	CD-OE2	-5.64	1.19	1.25

All (1) bond angle outliers are listed below:

Mol	Chain	Res	Type	Atoms	Z	Observed(°)	Ideal(°)
1	C	510	ARG	NE-CZ-NH1	7.28	123.94	120.30

There are no chirality outliers.

There are no planarity outliers.

5.2 Too-close contacts [i](#)

In the following table, the Non-H and H(model) columns list the number of non-hydrogen atoms and hydrogen atoms in the chain respectively. The H(added) column lists the number of hydrogen atoms added and optimized by MolProbity. The Clashes column lists the number of clashes within the asymmetric unit, whereas Symm-Clashes lists symmetry-related clashes.

Mol	Chain	Non-H	H(model)	H(added)	Clashes	Symm-Clashes
1	A	2543	0	2514	15	0
1	B	2551	0	2515	13	0

Continued on next page...

Continued from previous page...

Mol	Chain	Non-H	H(model)	H(added)	Clashes	Symm-Clashes
1	C	2551	0	2517	14	0
1	D	2533	0	2505	10	0
2	A	1	0	0	0	0
2	B	1	0	0	0	0
2	C	1	0	0	0	0
2	D	1	0	0	0	0
3	A	1	0	0	0	0
3	B	1	0	0	0	0
3	C	1	0	0	0	0
3	D	1	0	0	0	0
4	A	34	0	0	1	0
4	B	34	0	0	2	0
4	C	34	0	0	1	0
4	D	34	0	0	2	0
5	A	116	0	0	0	0
5	B	140	0	0	1	0
5	C	128	0	0	1	0
5	D	80	0	0	0	0
All	All	10786	0	10051	52	0

The all-atom clashscore is defined as the number of clashes found per 1000 atoms (including hydrogen atoms). The all-atom clashscore for this structure is 3.

All (52) close contacts within the same asymmetric unit are listed below, sorted by their clash magnitude.

Atom-1	Atom-2	Interatomic distance (Å)	Clash overlap (Å)
1:B:497:SER:O	1:B:553:ARG:HD2	2.00	0.62
1:D:624:GLU:OE2	1:D:627:ARG:NH2	2.32	0.60
1:D:492:TYR:CZ	1:D:496:ARG:HD2	2.38	0.59
1:B:727:LEU:CD1	1:B:759:LEU:HD11	2.33	0.58
1:B:459:LEU:H	1:B:459:LEU:HD12	1.70	0.57
1:B:550:ASP:N	1:B:550:ASP:OD1	2.42	0.53
1:C:713:MET:HG2	1:C:714:MET:HG2	1.90	0.53
1:A:492:TYR:CZ	1:A:496:ARG:HD2	2.44	0.52
1:D:725:GLY:HA3	4:D:803:JUC:N11	2.25	0.52
1:B:724:GLN:NE2	5:B:901:HOH:O	2.28	0.51
1:A:542:GLN:NE2	1:A:542:GLN:HA	2.26	0.50
1:C:727:LEU:HD13	1:C:766:ILE:HD12	1.93	0.50
1:C:699:GLU:HG2	1:C:714:MET:HE3	1.94	0.50
1:C:713:MET:HB2	4:C:803:JUC:C3	2.41	0.49
1:C:716:ARG:O	1:C:719:LYS:HG3	2.13	0.49

Continued on next page...

Continued from previous page...

Atom-1	Atom-2	Interatomic distance (Å)	Clash overlap (Å)
1:B:546:THR:HG23	1:B:547:LEU:HD23	1.94	0.48
1:C:697:TRP:CZ2	1:C:719:LYS:HG2	2.48	0.48
1:D:761:GLN:O	1:D:765:VAL:HG23	2.13	0.48
1:A:497:SER:O	1:A:553:ARG:HD2	2.14	0.48
1:D:693:TYR:OH	4:D:803:JUC:N4	2.47	0.47
1:A:649:TYR:CZ	1:A:743:GLN:HB3	2.50	0.47
1:C:482:PHE:HB2	1:C:485:MET:HG3	1.97	0.46
1:D:735:ILE:HB	1:D:736:PRO:HD3	1.97	0.46
1:A:662:ARG:HG2	1:A:662:ARG:HH11	1.81	0.45
1:A:700:GLY:HA3	1:A:714:MET:O	2.16	0.45
1:A:735:ILE:HB	1:A:736:PRO:HD3	1.99	0.45
1:A:662:ARG:HG2	1:A:662:ARG:NH1	2.32	0.45
1:C:542:GLN:NE2	1:C:542:GLN:HA	2.31	0.45
1:D:700:GLY:HA3	1:D:714:MET:O	2.17	0.45
1:D:497:SER:O	1:D:553:ARG:HD2	2.17	0.44
1:B:700:GLY:HA3	1:B:714:MET:O	2.17	0.44
1:A:735:ILE:HD13	1:A:755:CYS:SG	2.58	0.44
1:A:730:TYR:O	1:A:735:ILE:HG12	2.17	0.44
1:C:700:GLY:HA3	1:C:714:MET:O	2.17	0.44
1:B:483:GLU:HG2	1:B:486:TRP:CZ3	2.52	0.43
1:A:577:LYS:HD2	1:A:708:ILE:HD13	2.00	0.43
1:B:692:ILE:HD13	4:B:803:JUC:C31	2.48	0.43
1:A:722:VAL:N	1:A:723:PRO:CD	2.81	0.43
1:A:497:SER:OG	1:A:557:LEU:HD11	2.18	0.43
1:B:721:GLU:O	4:B:803:JUC:F23	2.27	0.43
1:B:650:GLN:NE2	1:B:650:GLN:HA	2.34	0.42
1:C:722:VAL:N	1:C:723:PRO:CD	2.82	0.42
1:C:743:GLN:HE21	1:C:743:GLN:HB2	1.61	0.42
1:B:497:SER:HA	1:B:542:GLN:HE22	1.84	0.42
1:A:627:ARG:O	1:A:631:ILE:HG12	2.20	0.42
1:D:686:LYS:HE2	1:D:686:LYS:HB3	1.91	0.41
1:C:556:LEU:HD23	1:C:556:LEU:HA	1.89	0.41
1:A:692:ILE:HD13	4:A:803:JUC:C31	2.51	0.41
1:C:651:THR:CG2	5:C:1020:HOH:O	2.69	0.41
1:D:722:VAL:N	1:D:723:PRO:CD	2.84	0.41
1:C:638:TYR:CD1	1:C:671:THR:HG21	2.56	0.40
1:B:638:TYR:CD1	1:B:671:THR:HG21	2.57	0.40

There are no symmetry-related clashes.

5.3 Torsion angles [i](#)

5.3.1 Protein backbone [i](#)

In the following table, the Percentiles column shows the percent Ramachandran outliers of the chain as a percentile score with respect to all X-ray entries followed by that with respect to entries of similar resolution.

The Analysed column shows the number of residues for which the backbone conformation was analysed, and the total number of residues.

Mol	Chain	Analysed	Favoured	Allowed	Outliers	Percentiles	
1	A	310/343 (90%)	303 (98%)	7 (2%)	0	100	100
1	B	312/343 (91%)	306 (98%)	6 (2%)	0	100	100
1	C	312/343 (91%)	307 (98%)	5 (2%)	0	100	100
1	D	310/343 (90%)	302 (97%)	8 (3%)	0	100	100
All	All	1244/1372 (91%)	1218 (98%)	26 (2%)	0	100	100

There are no Ramachandran outliers to report.

5.3.2 Protein sidechains [i](#)

In the following table, the Percentiles column shows the percent sidechain outliers of the chain as a percentile score with respect to all X-ray entries followed by that with respect to entries of similar resolution.

The Analysed column shows the number of residues for which the sidechain conformation was analysed, and the total number of residues.

Mol	Chain	Analysed	Rotameric	Outliers	Percentiles	
1	A	282/305 (92%)	279 (99%)	3 (1%)	73	77
1	B	281/305 (92%)	276 (98%)	5 (2%)	59	61
1	C	282/305 (92%)	278 (99%)	4 (1%)	67	70
1	D	280/305 (92%)	276 (99%)	4 (1%)	67	70
All	All	1125/1220 (92%)	1109 (99%)	16 (1%)	67	70

All (16) residues with a non-rotameric sidechain are listed below:

Mol	Chain	Res	Type
1	A	517	LYS
1	A	587	SER

Continued on next page...

Continued from previous page...

Mol	Chain	Res	Type
1	A	760	SER
1	B	638	TYR
1	B	677	SER
1	B	709	GLN
1	B	767	ARG
1	B	770	GLU
1	C	573	SER
1	C	713	MET
1	C	714	MET
1	C	760	SER
1	D	500	THR
1	D	573	SER
1	D	617	SER
1	D	660	SER

Sometimes sidechains can be flipped to improve hydrogen bonding and reduce clashes. All (20) such sidechains are listed below:

Mol	Chain	Res	Type
1	A	484	ASN
1	A	542	GLN
1	A	604	GLN
1	A	709	GLN
1	A	743	GLN
1	A	761	GLN
1	B	542	GLN
1	B	604	GLN
1	B	650	GLN
1	B	709	GLN
1	B	761	GLN
1	C	542	GLN
1	C	604	GLN
1	C	709	GLN
1	C	743	GLN
1	D	484	ASN
1	D	576	GLN
1	D	604	GLN
1	D	609	ASN
1	D	761	GLN

5.3.3 RNA [i](#)

There are no RNA molecules in this entry.

5.4 Non-standard residues in protein, DNA, RNA chains [i](#)

4 non-standard protein/DNA/RNA residues are modelled in this entry.

In the following table, the Counts columns list the number of bonds (or angles) for which Mogul statistics could be retrieved, the number of bonds (or angles) that are observed in the model and the number of bonds (or angles) that are defined in the Chemical Component Dictionary. The Link column lists molecule types, if any, to which the group is linked. The Z score for a bond length (or angle) is the number of standard deviations the observed value is removed from the expected value. A bond length (or angle) with $|Z| > 2$ is considered an outlier worth inspection. RMSZ is the root-mean-square of all Z scores of the bond lengths (or angles).

Mol	Type	Chain	Res	Link	Bond lengths			Bond angles		
					Counts	RMSZ	# Z > 2	Counts	RMSZ	# Z > 2
1	CME	A	509	1	8,9,10	0.59	0	5,9,11	0.74	0
1	CME	D	509	1	8,9,10	0.53	0	5,9,11	0.57	0
1	CME	B	509	1	8,9,10	0.56	0	5,9,11	0.20	0
1	CME	C	509	1	8,9,10	0.65	0	5,9,11	0.54	0

In the following table, the Chirals column lists the number of chiral outliers, the number of chiral centers analysed, the number of these observed in the model and the number defined in the Chemical Component Dictionary. Similar counts are reported in the Torsion and Rings columns. '-' means no outliers of that kind were identified.

Mol	Type	Chain	Res	Link	Chirals	Torsions	Rings
1	CME	A	509	1	-	2/5/8/10	-
1	CME	D	509	1	-	2/5/8/10	-
1	CME	B	509	1	-	2/5/8/10	-
1	CME	C	509	1	-	3/5/8/10	-

There are no bond length outliers.

There are no bond angle outliers.

There are no chirality outliers.

All (9) torsion outliers are listed below:

Mol	Chain	Res	Type	Atoms
1	A	509	CME	SD-CE-CZ-OH
1	C	509	CME	CE-SD-SG-CB

Continued on next page...

Continued from previous page...

Mol	Chain	Res	Type	Atoms
1	C	509	CME	SD-CE-CZ-OH
1	B	509	CME	SD-CE-CZ-OH
1	D	509	CME	SD-CE-CZ-OH
1	C	509	CME	CZ-CE-SD-SG
1	A	509	CME	CZ-CE-SD-SG
1	B	509	CME	CZ-CE-SD-SG
1	D	509	CME	CZ-CE-SD-SG

There are no ring outliers.

No monomer is involved in short contacts.

5.5 Carbohydrates [i](#)

There are no monosaccharides in this entry.

5.6 Ligand geometry [i](#)

Of 12 ligands modelled in this entry, 8 are monoatomic - leaving 4 for Mogul analysis.

In the following table, the Counts columns list the number of bonds (or angles) for which Mogul statistics could be retrieved, the number of bonds (or angles) that are observed in the model and the number of bonds (or angles) that are defined in the Chemical Component Dictionary. The Link column lists molecule types, if any, to which the group is linked. The Z score for a bond length (or angle) is the number of standard deviations the observed value is removed from the expected value. A bond length (or angle) with $|Z| > 2$ is considered an outlier worth inspection. RMSZ is the root-mean-square of all Z scores of the bond lengths (or angles).

Mol	Type	Chain	Res	Link	Bond lengths			Bond angles		
					Counts	RMSZ	# Z > 2	Counts	RMSZ	# Z > 2
4	JUC	A	803	-	33,39,39	2.30	12 (36%)	39,57,57	2.48	16 (41%)
4	JUC	B	803	-	33,39,39	3.08	14 (42%)	39,57,57	2.69	15 (38%)
4	JUC	D	803	-	33,39,39	2.75	14 (42%)	39,57,57	2.86	20 (51%)
4	JUC	C	803	-	33,39,39	2.55	18 (54%)	39,57,57	2.15	15 (38%)

In the following table, the Chirals column lists the number of chiral outliers, the number of chiral centers analysed, the number of these observed in the model and the number defined in the Chemical Component Dictionary. Similar counts are reported in the Torsion and Rings columns. '-' means no outliers of that kind were identified.

Mol	Type	Chain	Res	Link	Chirals	Torsions	Rings
4	JUC	A	803	-	-	7/13/33/33	0/6/6/6
4	JUC	B	803	-	-	9/13/33/33	0/6/6/6
4	JUC	D	803	-	-	9/13/33/33	0/6/6/6
4	JUC	C	803	-	-	9/13/33/33	0/6/6/6

All (58) bond length outliers are listed below:

Mol	Chain	Res	Type	Atoms	Z	Observed(Å)	Ideal(Å)
4	B	803	JUC	C6-N4	7.58	1.42	1.34
4	B	803	JUC	C2-C3	6.73	1.50	1.39
4	D	803	JUC	C2-C3	6.01	1.48	1.39
4	B	803	JUC	C10-C8	-5.90	1.41	1.49
4	C	803	JUC	C2-C3	5.67	1.48	1.39
4	D	803	JUC	C24-N25	5.37	1.39	1.32
4	A	803	JUC	C10-C8	-5.13	1.42	1.49
4	D	803	JUC	C6-N4	5.02	1.40	1.34
4	A	803	JUC	C10-C24	4.77	1.53	1.43
4	D	803	JUC	C3-N4	4.74	1.39	1.32
4	B	803	JUC	C24-N25	4.61	1.38	1.32
4	B	803	JUC	C17-N16	4.60	1.54	1.48
4	C	803	JUC	C24-N25	4.20	1.37	1.32
4	B	803	JUC	C10-C24	4.10	1.52	1.43
4	C	803	JUC	C10-C24	4.01	1.51	1.43
4	A	803	JUC	C2-C3	3.88	1.45	1.39
4	A	803	JUC	C31-C30	3.87	1.48	1.38
4	C	803	JUC	C10-N26	3.84	1.38	1.32
4	B	803	JUC	C10-N26	3.79	1.38	1.32
4	D	803	JUC	C28-C27	3.79	1.50	1.42
4	C	803	JUC	C12-N11	3.75	1.52	1.47
4	B	803	JUC	C12-N11	3.73	1.52	1.47
4	A	803	JUC	C33-C24	3.72	1.56	1.50
4	D	803	JUC	C17-N16	3.68	1.53	1.48
4	C	803	JUC	C3-N4	3.67	1.37	1.32
4	D	803	JUC	C33-C24	3.64	1.56	1.50
4	C	803	JUC	C33-C24	3.63	1.56	1.50
4	B	803	JUC	C28-C27	3.58	1.49	1.42
4	B	803	JUC	C33-C24	3.53	1.56	1.50
4	D	803	JUC	C8-N9	3.49	1.40	1.34
4	A	803	JUC	C34-N16	3.42	1.55	1.46
4	B	803	JUC	C3-N4	3.40	1.37	1.32
4	D	803	JUC	C12-N11	3.39	1.52	1.47
4	A	803	JUC	C17-N16	3.39	1.52	1.48

Continued on next page...

Continued from previous page...

Mol	Chain	Res	Type	Atoms	Z	Observed(Å)	Ideal(Å)
4	D	803	JUC	C31-C30	3.37	1.46	1.38
4	D	803	JUC	C10-C24	3.35	1.50	1.43
4	D	803	JUC	C28-N25	3.30	1.43	1.37
4	C	803	JUC	C10-C8	-3.26	1.45	1.49
4	C	803	JUC	C17-N16	3.04	1.52	1.48
4	B	803	JUC	C31-C30	2.97	1.45	1.38
4	A	803	JUC	C12-N11	2.96	1.51	1.47
4	C	803	JUC	C31-C30	2.91	1.45	1.38
4	A	803	JUC	C27-N26	2.74	1.42	1.37
4	C	803	JUC	C15-N11	2.64	1.49	1.46
4	A	803	JUC	C13-C12	2.64	1.57	1.52
4	D	803	JUC	C15-C14	2.58	1.57	1.50
4	C	803	JUC	C31-C32	2.58	1.42	1.36
4	C	803	JUC	C6-N4	2.53	1.37	1.34
4	A	803	JUC	C6-N4	2.49	1.37	1.34
4	B	803	JUC	C34-N16	2.48	1.52	1.46
4	B	803	JUC	C15-N11	2.46	1.49	1.46
4	C	803	JUC	C32-C27	-2.28	1.37	1.41
4	C	803	JUC	C13-C12	2.22	1.57	1.52
4	C	803	JUC	C28-C27	2.12	1.46	1.42
4	C	803	JUC	C28-N25	2.10	1.41	1.37
4	D	803	JUC	C10-C8	-2.05	1.46	1.49
4	C	803	JUC	C34-N16	2.04	1.51	1.46
4	A	803	JUC	C15-N11	2.02	1.49	1.46

All (66) bond angle outliers are listed below:

Mol	Chain	Res	Type	Atoms	Z	Observed(°)	Ideal(°)
4	B	803	JUC	C34-N16-C1	-8.73	111.61	120.91
4	A	803	JUC	C34-N16-C1	-8.66	111.68	120.91
4	D	803	JUC	C34-N16-C1	-8.60	111.74	120.91
4	D	803	JUC	C8-C10-N26	-5.86	106.89	115.28
4	C	803	JUC	C34-N16-C1	-5.80	114.73	120.91
4	B	803	JUC	C7-C8-C10	-5.47	121.34	129.32
4	D	803	JUC	C18-C17-N16	5.24	118.77	111.93
4	B	803	JUC	C34-N16-C17	5.02	122.25	117.92
4	B	803	JUC	C1-C2-C3	4.79	121.78	116.76
4	D	803	JUC	C1-C2-C3	4.68	121.67	116.76
4	D	803	JUC	C8-C10-C24	4.63	128.14	123.00
4	C	803	JUC	C1-C2-C3	4.53	121.51	116.76
4	A	803	JUC	N4-C3-N11	-4.47	113.47	117.43
4	B	803	JUC	C18-C17-N16	4.40	117.67	111.93

Continued on next page...

Continued from previous page...

Mol	Chain	Res	Type	Atoms	Z	Observed(°)	Ideal(°)
4	A	803	JUC	C1-C2-C3	4.37	121.34	116.76
4	C	803	JUC	C18-C17-N16	4.19	117.40	111.93
4	A	803	JUC	C22-C17-C18	-3.81	102.42	111.19
4	A	803	JUC	C3-N4-C6	-3.78	113.16	118.75
4	C	803	JUC	C3-N4-C6	-3.72	113.25	118.75
4	B	803	JUC	C3-N4-C6	-3.67	113.32	118.75
4	B	803	JUC	C24-C10-N26	3.63	126.15	121.78
4	D	803	JUC	C3-N4-C6	-3.54	113.52	118.75
4	D	803	JUC	C24-N25-C28	-3.47	115.01	118.38
4	D	803	JUC	C22-C17-C18	-3.42	103.31	111.19
4	D	803	JUC	C7-C8-C10	-3.40	124.36	129.32
4	B	803	JUC	C8-C10-N26	-3.28	110.59	115.28
4	C	803	JUC	C2-C3-N11	-3.14	118.56	122.29
4	A	803	JUC	C8-C10-N26	-3.12	110.83	115.28
4	D	803	JUC	C13-C14-C15	3.09	109.07	104.75
4	A	803	JUC	C15-N11-C3	-3.03	119.89	123.60
4	D	803	JUC	C31-C32-C27	-3.01	115.75	120.08
4	A	803	JUC	C24-C10-N26	2.99	125.38	121.78
4	D	803	JUC	O20-C19-C18	2.95	118.21	111.72
4	A	803	JUC	C7-C8-C10	-2.93	125.04	129.32
4	C	803	JUC	C7-C8-C10	-2.90	125.09	129.32
4	C	803	JUC	C22-C17-C18	-2.81	104.73	111.19
4	C	803	JUC	C34-N16-C17	2.68	120.23	117.92
4	A	803	JUC	O20-C19-C18	2.66	117.58	111.72
4	D	803	JUC	C12-N11-C3	-2.65	120.36	123.60
4	D	803	JUC	C24-C10-N26	2.62	124.94	121.78
4	C	803	JUC	C30-C31-C32	2.59	124.08	120.44
4	B	803	JUC	C24-N25-C28	-2.53	115.92	118.38
4	B	803	JUC	C21-O20-C19	2.53	118.33	109.89
4	B	803	JUC	C7-C8-N9	2.52	114.53	109.88
4	A	803	JUC	C18-C17-N16	2.51	115.21	111.93
4	C	803	JUC	C21-O20-C19	2.47	118.15	109.89
4	B	803	JUC	C31-C32-C27	-2.46	116.54	120.08
4	C	803	JUC	O20-C19-C18	2.40	117.00	111.72
4	D	803	JUC	C2-C3-N11	-2.39	119.45	122.29
4	B	803	JUC	C22-C17-C18	-2.36	105.75	111.19
4	D	803	JUC	C32-C27-C28	2.35	122.18	119.25
4	A	803	JUC	C7-C8-N9	2.31	114.14	109.88
4	D	803	JUC	N4-C3-N11	-2.30	115.40	117.43
4	A	803	JUC	C2-C3-N11	-2.28	119.58	122.29
4	D	803	JUC	C21-O20-C19	2.27	117.47	109.89
4	D	803	JUC	C33-C24-C10	-2.24	121.48	123.97

Continued on next page...

Continued from previous page...

Mol	Chain	Res	Type	Atoms	Z	Observed(°)	Ideal(°)
4	A	803	JUC	C21-O20-C19	2.24	117.35	109.89
4	D	803	JUC	C13-C12-N11	2.23	105.97	103.35
4	C	803	JUC	C29-C28-C27	2.21	122.01	119.25
4	A	803	JUC	C10-N26-C27	-2.21	112.79	117.27
4	C	803	JUC	C31-C32-C27	-2.18	116.95	120.08
4	C	803	JUC	C15-N11-C3	-2.10	121.03	123.60
4	A	803	JUC	C29-C28-C27	2.09	121.86	119.25
4	B	803	JUC	C2-C3-N11	-2.04	119.87	122.29
4	C	803	JUC	C24-C10-N26	2.02	124.21	121.78
4	B	803	JUC	O20-C19-C18	2.02	116.17	111.72

There are no chirality outliers.

All (34) torsion outliers are listed below:

Mol	Chain	Res	Type	Atoms
4	A	803	JUC	C18-C17-N16-C34
4	A	803	JUC	C22-C17-N16-C34
4	A	803	JUC	C2-C1-N16-C34
4	A	803	JUC	N5-C1-N16-C34
4	B	803	JUC	C18-C17-N16-C34
4	B	803	JUC	C22-C17-N16-C34
4	B	803	JUC	C2-C1-N16-C17
4	B	803	JUC	C2-C1-N16-C34
4	B	803	JUC	N5-C1-N16-C17
4	B	803	JUC	N5-C1-N16-C34
4	C	803	JUC	C18-C17-N16-C34
4	C	803	JUC	C22-C17-N16-C34
4	C	803	JUC	C2-C1-N16-C17
4	C	803	JUC	C2-C1-N16-C34
4	C	803	JUC	N5-C1-N16-C34
4	D	803	JUC	C18-C17-N16-C34
4	D	803	JUC	C22-C17-N16-C34
4	C	803	JUC	N5-C1-N16-C17
4	D	803	JUC	N5-C1-N16-C17
4	D	803	JUC	C2-C1-N16-C17
4	D	803	JUC	N5-C1-N16-C34
4	D	803	JUC	C2-C1-N16-C34
4	A	803	JUC	N4-C3-N11-C12
4	C	803	JUC	N4-C3-N11-C12
4	A	803	JUC	C2-C3-N11-C12
4	A	803	JUC	N26-C10-C8-C7
4	B	803	JUC	N26-C10-C8-C7

Continued on next page...

Continued from previous page...

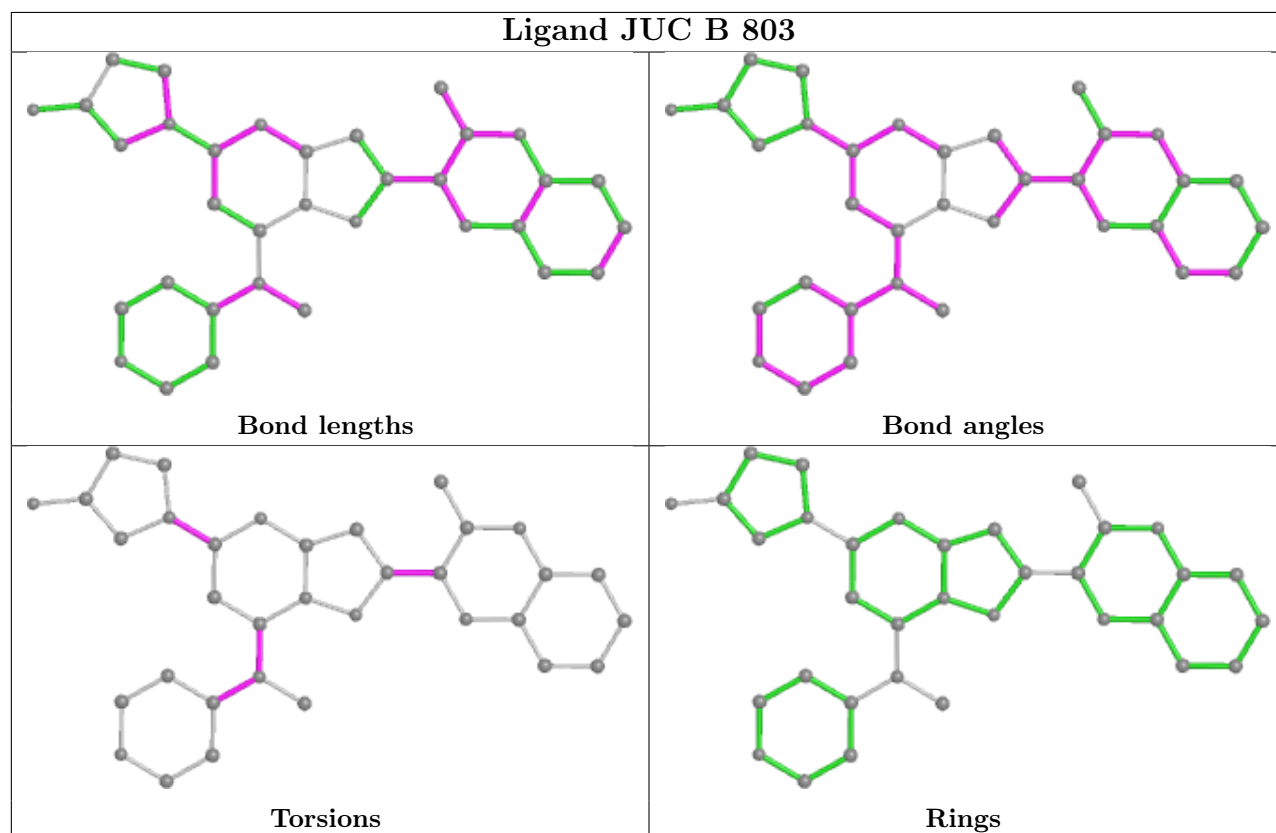
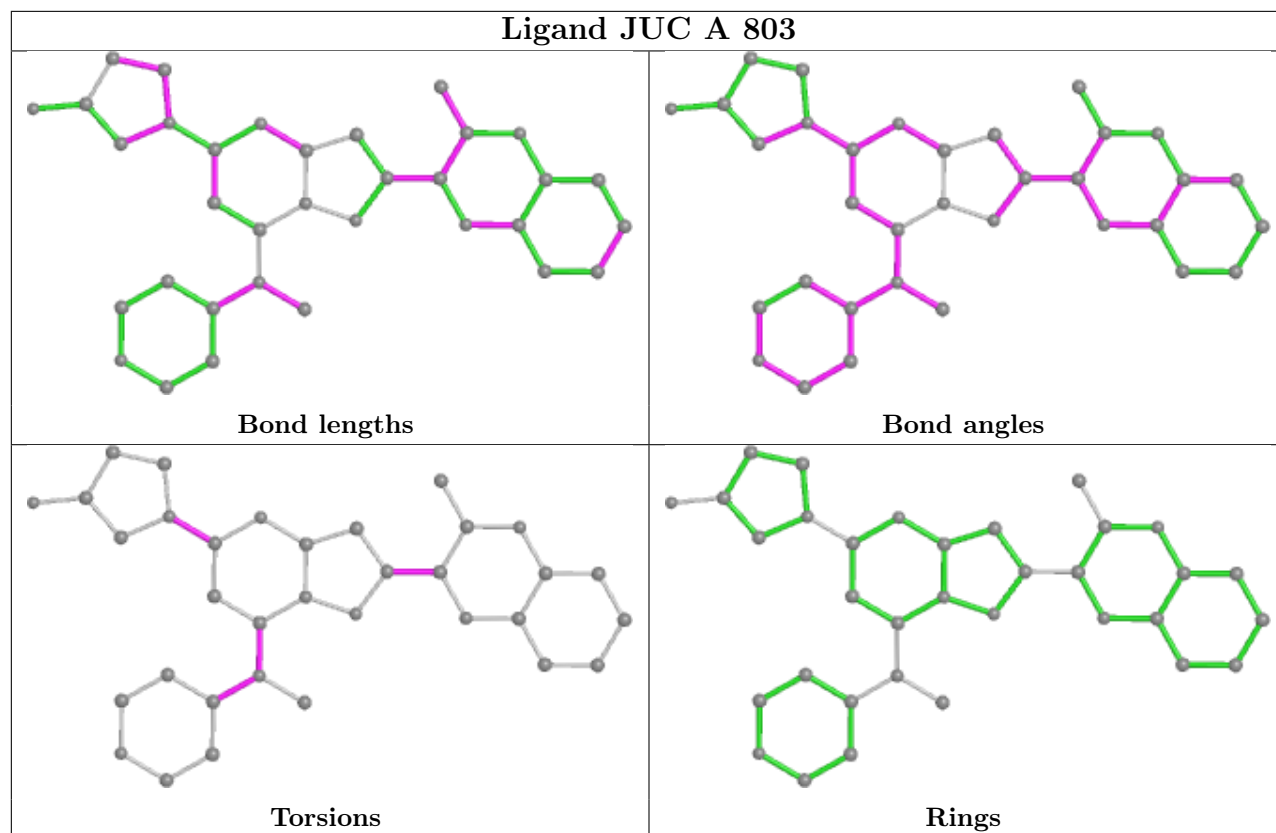
Mol	Chain	Res	Type	Atoms
4	C	803	JUC	N26-C10-C8-C7
4	D	803	JUC	N26-C10-C8-C7
4	B	803	JUC	N4-C3-N11-C12
4	D	803	JUC	N4-C3-N11-C12
4	B	803	JUC	C2-C3-N11-C12
4	C	803	JUC	C2-C3-N11-C12
4	D	803	JUC	C2-C3-N11-C12

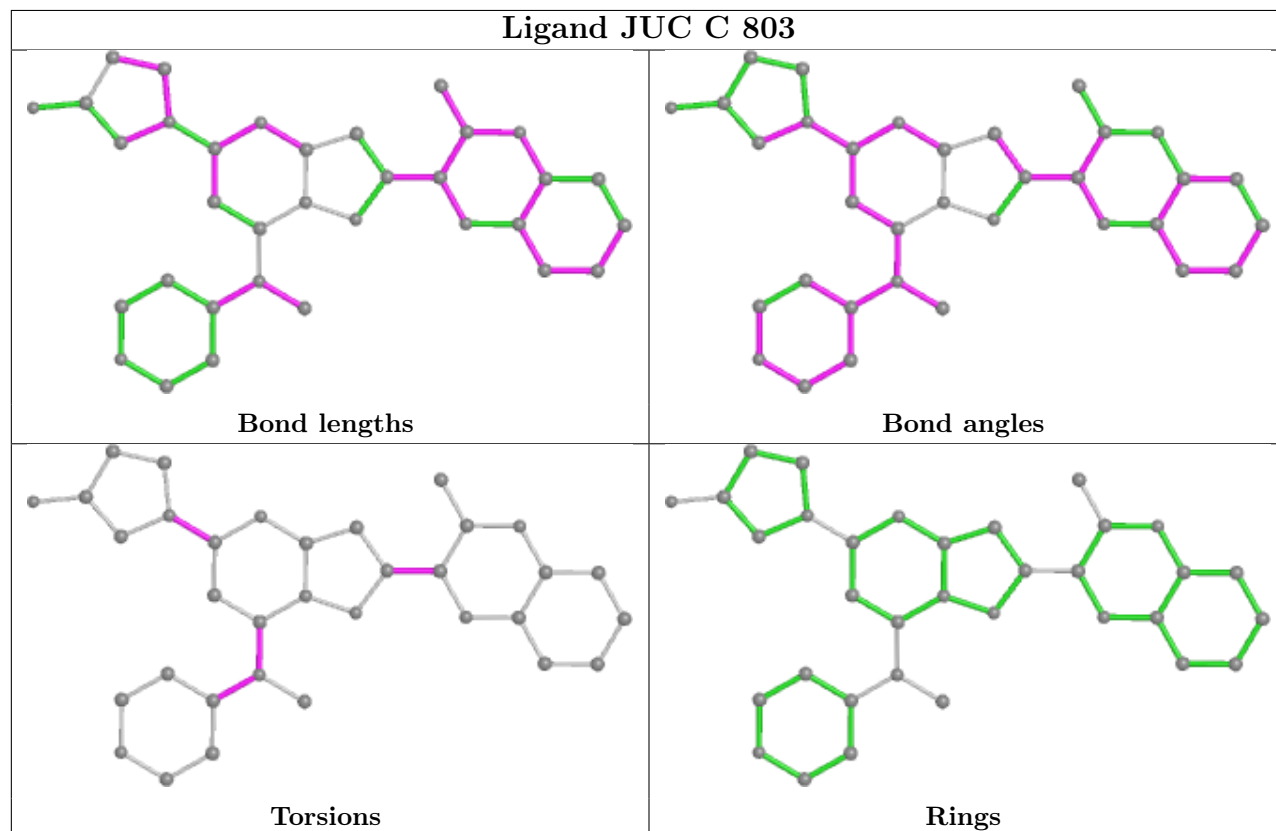
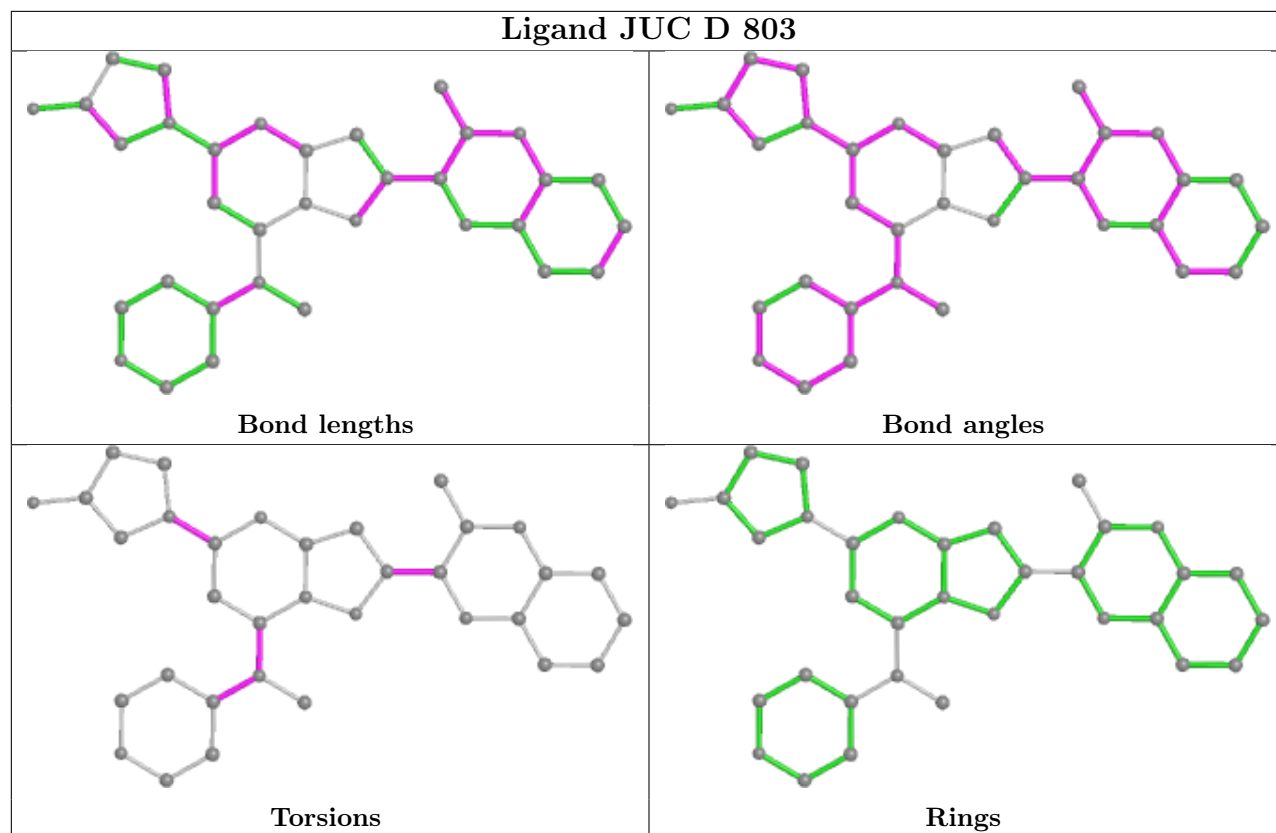
There are no ring outliers.

4 monomers are involved in 6 short contacts:

Mol	Chain	Res	Type	Clashes	Symm-Clashes
4	A	803	JUC	1	0
4	B	803	JUC	2	0
4	D	803	JUC	2	0
4	C	803	JUC	1	0

The following is a two-dimensional graphical depiction of Mogul quality analysis of bond lengths, bond angles, torsion angles, and ring geometry for all instances of the Ligand of Interest. In addition, ligands with molecular weight > 250 and outliers as shown on the validation Tables will also be included. For torsion angles, if less than 5% of the Mogul distribution of torsion angles is within 10 degrees of the torsion angle in question, then that torsion angle is considered an outlier. Any bond that is central to one or more torsion angles identified as an outlier by Mogul will be highlighted in the graph. For rings, the root-mean-square deviation (RMSD) between the ring in question and similar rings identified by Mogul is calculated over all ring torsion angles. If the average RMSD is greater than 60 degrees and the minimal RMSD between the ring in question and any Mogul-identified rings is also greater than 60 degrees, then that ring is considered an outlier. The outliers are highlighted in purple. The color gray indicates Mogul did not find sufficient equivalents in the CSD to analyse the geometry.





5.7 Other polymers [i](#)

There are no such residues in this entry.

5.8 Polymer linkage issues [i](#)

There are no chain breaks in this entry.

6 Fit of model and data [i](#)

6.1 Protein, DNA and RNA chains [i](#)

In the following table, the column labelled ‘#RSRZ> 2’ contains the number (and percentage) of RSRZ outliers, followed by percent RSRZ outliers for the chain as percentile scores relative to all X-ray entries and entries of similar resolution. The OWAB column contains the minimum, median, 95th percentile and maximum values of the occupancy-weighted average B-factor per residue. The column labelled ‘Q< 0.9’ lists the number of (and percentage) of residues with an average occupancy less than 0.9.

Mol	Chain	Analysed	<RSRZ>	#RSRZ>2	OWAB(Å ²)	Q<0.9
1	A	311/343 (90%)	-0.39	0 100 100	26, 37, 63, 96	0
1	B	314/343 (91%)	-0.30	1 (0%) 94 93	25, 36, 63, 96	0
1	C	313/343 (91%)	-0.53	3 (0%) 82 82	26, 37, 62, 98	0
1	D	311/343 (90%)	-0.33	3 (0%) 82 82	32, 45, 70, 85	0
All	All	1249/1372 (91%)	-0.39	7 (0%) 89 89	25, 40, 65, 98	0

All (7) RSRZ outliers are listed below:

Mol	Chain	Res	Type	RSRZ
1	B	771	THR	3.6
1	D	613	THR	3.0
1	C	768	GLY	2.6
1	C	769	GLU	2.5
1	C	770	GLU	2.3
1	D	657	ASN	2.0
1	D	720[A]	ASP	2.0

6.2 Non-standard residues in protein, DNA, RNA chains [i](#)

In the following table, the Atoms column lists the number of modelled atoms in the group and the number defined in the chemical component dictionary. The B-factors column lists the minimum, median, 95th percentile and maximum values of B factors of atoms in the group. The column labelled ‘Q< 0.9’ lists the number of atoms with occupancy less than 0.9.

Mol	Type	Chain	Res	Atoms	RSCC	RSR	B-factors(Å ²)	Q<0.9
1	CME	B	509	10/11	0.89	0.15	35,48,84,93	0
1	CME	C	509	10/11	0.90	0.10	40,47,82,87	0
1	CME	D	509	10/11	0.92	0.12	41,59,105,107	0
1	CME	A	509	10/11	0.93	0.12	42,52,90,97	0

6.3 Carbohydrates [i](#)

There are no monosaccharides in this entry.

6.4 Ligands [i](#)

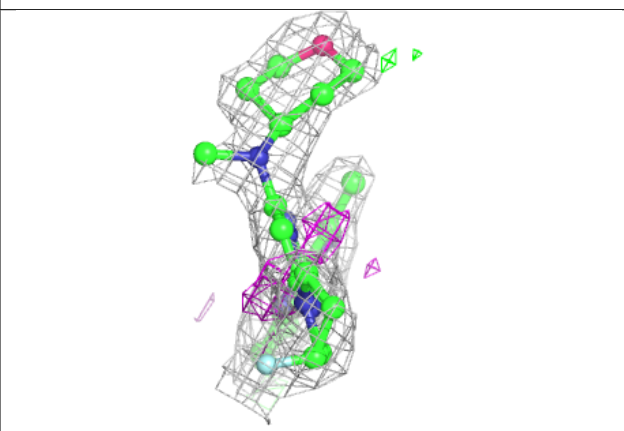
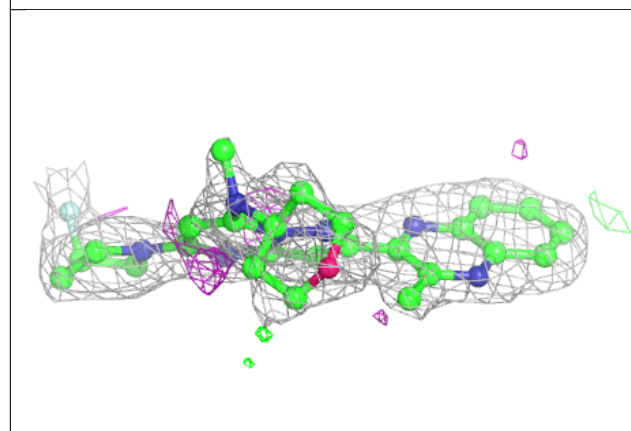
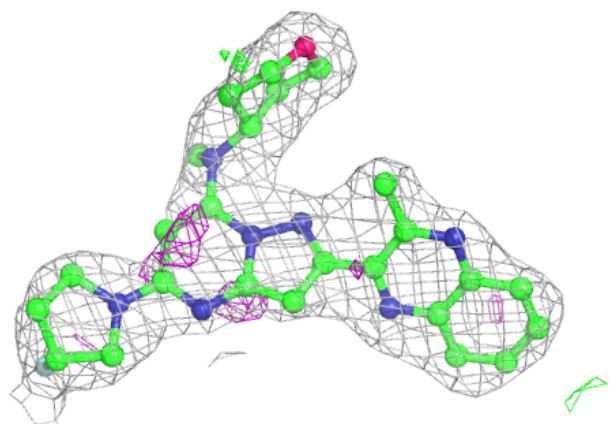
In the following table, the Atoms column lists the number of modelled atoms in the group and the number defined in the chemical component dictionary. The B-factors column lists the minimum, median, 95th percentile and maximum values of B factors of atoms in the group. The column labelled 'Q< 0.9' lists the number of atoms with occupancy less than 0.9.

Mol	Type	Chain	Res	Atoms	RSCC	RSR	B-factors(Å ²)	Q<0.9
4	JUC	B	803	34/34	0.82	0.17	44,55,69,72	0
4	JUC	D	803	34/34	0.87	0.19	48,62,93,94	0
4	JUC	C	803	34/34	0.88	0.21	43,67,88,93	0
4	JUC	A	803	34/34	0.90	0.14	41,54,73,74	0
3	MG	A	802	1/1	0.96	0.06	28,28,28,28	0
3	MG	B	802	1/1	0.96	0.11	25,25,25,25	0
3	MG	C	802	1/1	0.98	0.12	27,27,27,27	0
3	MG	D	802	1/1	0.99	0.03	34,34,34,34	0
2	ZN	A	801	1/1	1.00	0.10	31,31,31,31	0
2	ZN	B	801	1/1	1.00	0.10	30,30,30,30	0
2	ZN	C	801	1/1	1.00	0.09	31,31,31,31	0
2	ZN	D	801	1/1	1.00	0.06	39,39,39,39	0

The following is a graphical depiction of the model fit to experimental electron density of all instances of the Ligand of Interest. In addition, ligands with molecular weight > 250 and outliers as shown on the geometry validation Tables will also be included. Each fit is shown from different orientation to approximate a three-dimensional view.

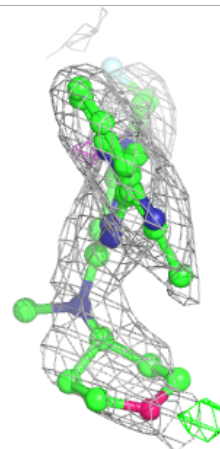
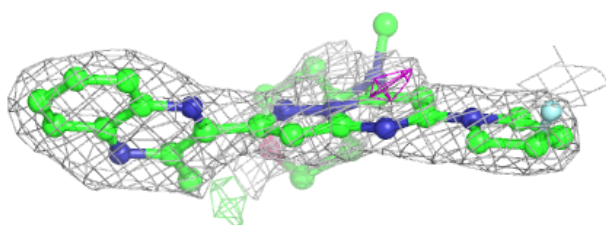
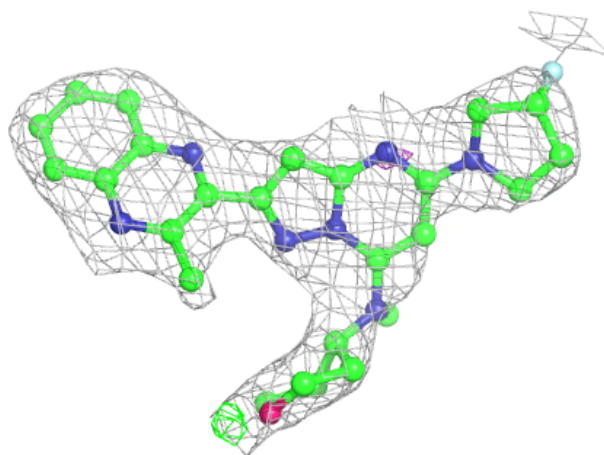
Electron density around JUC B 803:

$2mF_o-DF_c$ (at 0.7 rmsd) in gray
 mF_o-DF_c (at 3 rmsd) in purple (negative)
and green (positive)



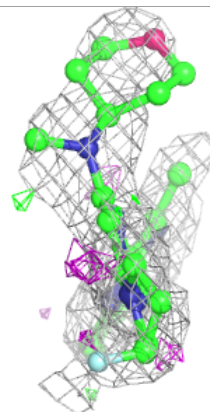
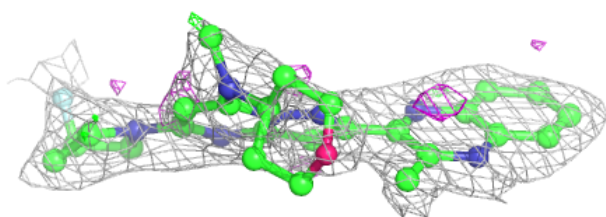
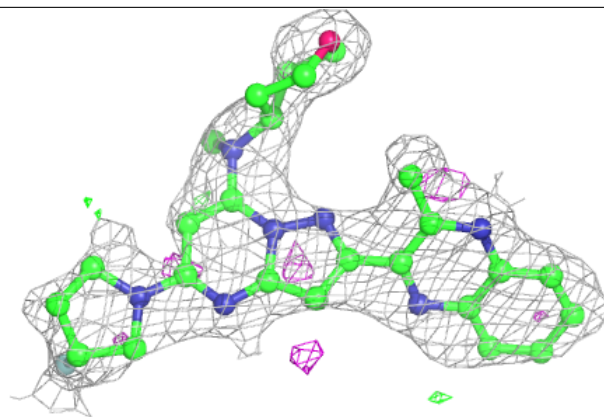
Electron density around JUC D 803:

$2mF_o-DF_c$ (at 0.7 rmsd) in gray
 mF_o-DF_c (at 3 rmsd) in purple (negative)
and green (positive)

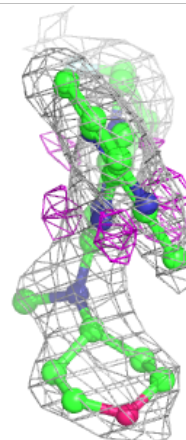
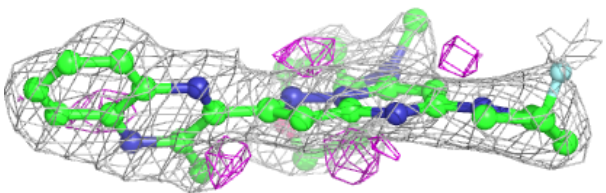
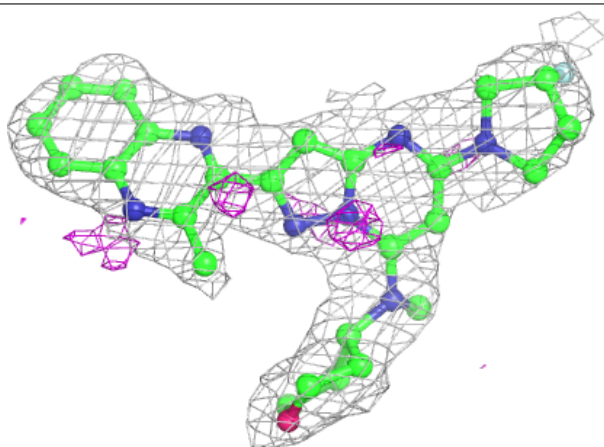


Electron density around JUC C 803:

$2mF_o-DF_c$ (at 0.7 rmsd) in gray
 mF_o-DF_c (at 3 rmsd) in purple (negative)
and green (positive)

**Electron density around JUC A 803:**

$2mF_o-DF_c$ (at 0.7 rmsd) in gray
 mF_o-DF_c (at 3 rmsd) in purple (negative)
and green (positive)



6.5 Other polymers [i](#)

There are no such residues in this entry.