



Full wwPDB EM Validation Report ⓘ

Nov 3, 2022 – 07:27 AM EDT

PDB ID : 5UZ7
EMDB ID : EMD-8623
Title : Volta phase plate cryo-electron microscopy structure of a calcitonin receptor-heterotrimeric Gs protein complex
Authors : Liang, Y.L.; Khoshouei, M.; Radjainia, M.; Zhang, Y.; Glukhova, A.; Tarrasch, J.; Thal, D.M.; Furness, S.G.B.; Christopoulos, G.; Coudrat, T.; Danev, R.; Baumeister, W.; Miller, L.J.; Christopoulos, A.; Kobilka, B.K.; Wootten, D.; Skiniotis, G.; Sexton, P.M.
Deposited on : 2017-02-24
Resolution : 4.10 Å(reported)

This is a Full wwPDB EM Validation Report for a publicly released PDB entry.

We welcome your comments at validation@mail.wwpdb.org

A user guide is available at

<https://www.wwpdb.org/validation/2017/EMValidationReportHelp>

with specific help available everywhere you see the ⓘ symbol.

The types of validation reports are described at

<http://www.wwpdb.org/validation/2017/FAQs#types>.

The following versions of software and data (see [references ⓘ](#)) were used in the production of this report:

EMDB validation analysis : 0.0.1.dev43
MolProbity : 4.02b-467
Percentile statistics : 20191225.v01 (using entries in the PDB archive December 25th 2019)
MapQ : 1.9.9
Ideal geometry (proteins) : Engh & Huber (2001)
Ideal geometry (DNA, RNA) : Parkinson et al. (1996)
Validation Pipeline (wwPDB-VP) : 2.31.2

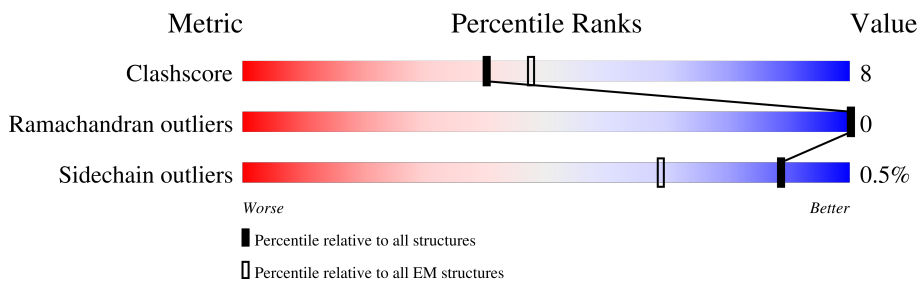
1 Overall quality at a glance i

The following experimental techniques were used to determine the structure:

ELECTRON MICROSCOPY

The reported resolution of this entry is 4.10 Å.

Percentile scores (ranging between 0-100) for global validation metrics of the entry are shown in the following graphic. The table shows the number of entries on which the scores are based.



Metric	Whole archive (#Entries)	EM structures (#Entries)
Clashscore	158937	4297
Ramachandran outliers	154571	4023
Sidechain outliers	154315	3826

The table below summarises the geometric issues observed across the polymeric chains and their fit to the map. The red, orange, yellow and green segments of the bar indicate the fraction of residues that contain outliers for ≥ 3 , 2, 1 and 0 types of geometric quality criteria respectively. A grey segment represents the fraction of residues that are not modelled. The numeric value for each fraction is indicated below the corresponding segment, with a dot representing fractions $\leq 5\%$. The upper red bar (where present) indicates the fraction of residues that have poor fit to the EM map (all-atom inclusion $< 40\%$). The numeric value is given above the bar.

Mol	Chain	Length	Quality of chain
1	A	380	
2	B	351	
3	G	68	
4	N	138	
5	R	501	

2 Entry composition [i](#)

There are 5 unique types of molecules in this entry. The entry contains 7643 atoms, of which 0 are hydrogens and 0 are deuteriums.

In the tables below, the AltConf column contains the number of residues with at least one atom in alternate conformation and the Trace column contains the number of residues modelled with at most 2 atoms.

- Molecule 1 is a protein called Guanine nucleotide-binding protein G(s) subunit alpha isoforms short.

Mol	Chain	Residues	Atoms					AltConf	Trace
			Total	C	N	O	S		
1	A	185	1566	997	287	276	6	0	0

- Molecule 2 is a protein called Guanine nucleotide-binding protein G(I)/G(S)/G(T) subunit beta-1.

Mol	Chain	Residues	Atoms					AltConf	Trace
			Total	C	N	O	S		
2	B	340	2579	1593	462	504	20	0	0

There are 12 discrepancies between the modelled and reference sequences:

Chain	Residue	Modelled	Actual	Comment	Reference
B	-10	MET	-	expression tag	UNP P62873
B	-9	HIS	-	expression tag	UNP P62873
B	-8	HIS	-	expression tag	UNP P62873
B	-7	HIS	-	expression tag	UNP P62873
B	-6	HIS	-	expression tag	UNP P62873
B	-5	HIS	-	expression tag	UNP P62873
B	-4	HIS	-	expression tag	UNP P62873
B	-3	GLY	-	expression tag	UNP P62873
B	-2	SER	-	expression tag	UNP P62873
B	-1	LEU	-	expression tag	UNP P62873
B	0	LEU	-	expression tag	UNP P62873
B	1	GLN	-	expression tag	UNP P62873

- Molecule 3 is a protein called Guanine nucleotide-binding protein G(I)/G(S)/G(O) subunit gamma-2.

Mol	Chain	Residues	Atoms					AltConf	Trace
			Total	C	N	O	S		
3	G	55	420	263	74	80	3	0	0

- Molecule 4 is a protein called NANOBODY 35.

Mol	Chain	Residues	Atoms					AltConf	Trace
			Total	C	N	O	S		
4	N	128	972	605	170	191	6	0	0

- Molecule 5 is a protein called Calcitonin receptor.

Mol	Chain	Residues	Atoms					AltConf	Trace
			Total	C	N	O	S		
5	R	266	2106	1419	341	328	18	0	0

There are 52 discrepancies between the modelled and reference sequences:

Chain	Residue	Modelled	Actual	Comment	Reference
R	-7	MET	-	initiating methionine	UNP P30988
R	-6	LYS	-	expression tag	UNP P30988
R	-5	THR	-	expression tag	UNP P30988
R	-4	ILE	-	expression tag	UNP P30988
R	-3	ILE	-	expression tag	UNP P30988
R	-2	ALA	-	expression tag	UNP P30988
R	-1	LEU	-	expression tag	UNP P30988
R	0	SER	-	expression tag	UNP P30988
R	1	TYR	-	expression tag	UNP P30988
R	2	ILE	-	expression tag	UNP P30988
R	3	PHE	-	expression tag	UNP P30988
R	4	CYS	-	expression tag	UNP P30988
R	5	LEU	-	expression tag	UNP P30988
R	6	VAL	-	expression tag	UNP P30988
R	7	PHE	-	expression tag	UNP P30988
R	8	ALA	-	expression tag	UNP P30988
R	9	ASP	-	expression tag	UNP P30988
R	10	TYR	-	expression tag	UNP P30988
R	11	LYS	-	expression tag	UNP P30988
R	12	ASP	-	expression tag	UNP P30988
R	13	ASP	-	expression tag	UNP P30988
R	14	ASP	-	expression tag	UNP P30988
R	15	ASP	-	expression tag	UNP P30988
R	16	LEU	-	expression tag	UNP P30988
R	17	GLU	-	expression tag	UNP P30988
R	18	VAL	-	expression tag	UNP P30988
R	19	LEU	-	expression tag	UNP P30988
R	20	PHE	-	expression tag	UNP P30988
R	21	GLN	-	expression tag	UNP P30988

Continued on next page...

Continued from previous page...

Chain	Residue	Modelled	Actual	Comment	Reference
R	22	GLY	-	expression tag	UNP P30988
R	23	PRO	-	expression tag	UNP P30988
R	24	ALA	-	expression tag	UNP P30988
R	447	LEU	PRO	conflict	UNP P30988
R	475	PRO	-	expression tag	UNP P30988
R	476	ALA	-	expression tag	UNP P30988
R	477	GLY	-	expression tag	UNP P30988
R	478	LEU	-	expression tag	UNP P30988
R	479	GLU	-	expression tag	UNP P30988
R	480	VAL	-	expression tag	UNP P30988
R	481	LEU	-	expression tag	UNP P30988
R	482	PHE	-	expression tag	UNP P30988
R	483	GLN	-	expression tag	UNP P30988
R	484	GLY	-	expression tag	UNP P30988
R	485	PRO	-	expression tag	UNP P30988
R	486	HIS	-	expression tag	UNP P30988
R	487	HIS	-	expression tag	UNP P30988
R	488	HIS	-	expression tag	UNP P30988
R	489	HIS	-	expression tag	UNP P30988
R	490	HIS	-	expression tag	UNP P30988
R	491	HIS	-	expression tag	UNP P30988
R	492	HIS	-	expression tag	UNP P30988
R	493	HIS	-	expression tag	UNP P30988

4 Experimental information

Property	Value	Source
EM reconstruction method	SINGLE PARTICLE	Depositor
Imposed symmetry	POINT, Not provided	
Number of particles used	106838	Depositor
Resolution determination method	FSC 0.143 CUT-OFF	Depositor
CTF correction method	PHASE FLIPPING AND AMPLITUDE CORRECTION	Depositor
Microscope	FEI TITAN KRIOS	Depositor
Voltage (kV)	300	Depositor
Electron dose ($e^-/\text{\AA}^2$)	50	Depositor
Minimum defocus (nm)	Not provided	
Maximum defocus (nm)	Not provided	
Magnification	Not provided	
Image detector	GATAN K2 SUMMIT (4k x 4k)	Depositor
Maximum map value	0.255	Depositor
Minimum map value	-0.142	Depositor
Average map value	0.000	Depositor
Map value standard deviation	0.008	Depositor
Recommended contour level	0.05	Depositor
Map size (Å)	211.99998, 211.99998, 211.99998	wwPDB
Map dimensions	200, 200, 200	wwPDB
Map angles (°)	90.0, 90.0, 90.0	wwPDB
Pixel spacing (Å)	1.06, 1.06, 1.06	Depositor

5 Model quality [i](#)

5.1 Standard geometry [i](#)

The Z score for a bond length (or angle) is the number of standard deviations the observed value is removed from the expected value. A bond length (or angle) with $|Z| > 5$ is considered an outlier worth inspection. RMSZ is the root-mean-square of all Z scores of the bond lengths (or angles).

Mol	Chain	Bond lengths		Bond angles	
		RMSZ	# $ Z > 5$	RMSZ	# $ Z > 5$
1	A	0.37	0/1596	0.61	1/2142 (0.0%)
2	B	0.43	0/2626	0.69	3/3565 (0.1%)
3	G	0.30	0/426	0.57	0/576
4	N	0.43	0/992	0.65	0/1344
5	R	0.37	1/2166 (0.0%)	0.67	3/2949 (0.1%)
All	All	0.40	1/7806 (0.0%)	0.66	7/10576 (0.1%)

All (1) bond length outliers are listed below:

Mol	Chain	Res	Type	Atoms	Z	Observed(Å)	Ideal(Å)
5	R	349	VAL	C-N	5.04	1.43	1.34

All (7) bond angle outliers are listed below:

Mol	Chain	Res	Type	Atoms	Z	Observed(°)	Ideal(°)
2	B	79	LEU	CA-CB-CG	7.23	131.92	115.30
5	R	142	LEU	CA-CB-CG	7.08	131.60	115.30
1	A	45	LEU	CA-CB-CG	5.96	129.00	115.30
2	B	336	LEU	CA-CB-CG	5.45	127.83	115.30
5	R	265	LEU	CA-CB-CG	5.12	127.08	115.30
5	R	247	LEU	CA-CB-CG	5.08	127.00	115.30
2	B	30	LEU	CA-CB-CG	5.07	126.96	115.30

There are no chirality outliers.

There are no planarity outliers.

5.2 Too-close contacts [i](#)

In the following table, the Non-H and H(model) columns list the number of non-hydrogen atoms and hydrogen atoms in the chain respectively. The H(added) column lists the number of hydrogen atoms added and optimized by MolProbity. The Clashes column lists the number of clashes within the asymmetric unit, whereas Symm-Clashes lists symmetry-related clashes.

Mol	Chain	Non-H	H(model)	H(added)	Clashes	Symm-Clashes
1	A	1566	0	1526	18	0
2	B	2579	0	2467	45	0
3	G	420	0	425	2	0
4	N	972	0	935	16	0
5	R	2106	0	2090	40	0
All	All	7643	0	7443	114	0

The all-atom clashscore is defined as the number of clashes found per 1000 atoms (including hydrogen atoms). The all-atom clashscore for this structure is 8.

All (114) close contacts within the same asymmetric unit are listed below, sorted by their clash magnitude.

Atom-1	Atom-2	Interatomic distance (Å)	Clash overlap (Å)
5:R:277:HIS:O	5:R:281:ARG:HB2	1.69	0.91
5:R:388:ALA:O	5:R:392:CYS:HB3	1.75	0.87
5:R:276:ILE:O	5:R:280:THR:HB	1.82	0.79
1:A:211:LYS:HA	1:A:219:PHE:O	1.89	0.73
5:R:387:VAL:O	5:R:391:TYR:HB2	1.90	0.70
5:R:342:VAL:O	5:R:346:MET:HB2	1.93	0.69
5:R:138:THR:O	5:R:142:LEU:HB2	1.97	0.65
1:A:384:GLN:OE1	5:R:326:LYS:NZ	2.31	0.63
4:N:37:VAL:HG12	4:N:47:TRP:HA	1.81	0.63
4:N:51:ILE:HG22	4:N:58:ILE:HG12	1.81	0.63
5:R:348:LEU:HD12	5:R:390:ILE:HD12	1.81	0.62
5:R:248:ILE:HD11	5:R:319:ILE:HD12	1.82	0.61
1:A:228:ARG:NH2	2:B:162:GLY:O	2.34	0.60
5:R:356:PHE:HZ	5:R:380:ILE:HD13	1.66	0.60
4:N:29:PHE:O	4:N:72:ARG:NH2	2.35	0.60
5:R:178:CYS:H	5:R:181:VAL:HB	1.67	0.60
5:R:409:PHE:O	5:R:413:TRP:HB3	2.02	0.59
4:N:51:ILE:HD12	4:N:72:ARG:HD2	1.84	0.59
5:R:344:ALA:O	5:R:348:LEU:HB2	2.02	0.58
5:R:238:LEU:HD22	5:R:308:ALA:HB1	1.86	0.57
5:R:278:ALA:O	5:R:282:ALA:HB2	2.05	0.57
2:B:250:CYS:HB2	2:B:264:TYR:HB2	1.85	0.56
1:A:283:ARG:O	1:A:357:HIS:ND1	2.38	0.56
4:N:40:ALA:HB3	4:N:43:LYS:HB2	1.87	0.56
2:B:320:VAL:HG22	2:B:327:VAL:HG22	1.88	0.55
1:A:318:TYR:O	1:A:336:ARG:NH2	2.38	0.55
4:N:52:SER:HB3	4:N:57:SER:HB2	1.88	0.55
5:R:409:PHE:O	5:R:413:TRP:CB	2.55	0.55
5:R:178:CYS:SG	5:R:179:GLN:N	2.78	0.55

Continued on next page...

Continued from previous page...

Atom-1	Atom-2	Interatomic distance (Å)	Clash overlap (Å)
2:B:192:LEU:HD23	2:B:199:PHE:HB3	1.89	0.54
2:B:148:CYS:SG	2:B:150:ARG:NH1	2.81	0.54
5:R:339:LEU:HA	5:R:342:VAL:HG12	1.89	0.53
1:A:19:GLN:OE1	2:B:88:ASN:ND2	2.37	0.53
1:A:43:LEU:HD23	1:A:245:ILE:HD11	1.91	0.53
1:A:273:PHE:HE1	1:A:287:VAL:HG11	1.74	0.53
2:B:10:GLU:HA	2:B:13:GLN:HG2	1.91	0.52
2:B:312:ASP:OD1	5:R:404:ARG:NH1	2.41	0.52
1:A:34:LYS:HG3	2:B:55:LEU:HD22	1.90	0.52
1:A:23:ASN:ND2	2:B:88:ASN:OD1	2.43	0.52
4:N:92:ALA:HB3	4:N:94:TYR:HE1	1.75	0.51
2:B:185:GLY:HA3	2:B:204:CYS:HB2	1.92	0.51
2:B:234:PHE:HE2	2:B:238:GLY:HA2	1.74	0.51
4:N:35:ASN:HB3	4:N:50:ASP:HB3	1.93	0.51
5:R:402:VAL:O	5:R:406:TRP:HB2	2.10	0.51
2:B:137:ARG:NE	2:B:171:ILE:O	2.44	0.51
5:R:391:TYR:O	5:R:395:ASN:ND2	2.44	0.50
1:A:42:ARG:HG2	1:A:220:HIS:HB3	1.92	0.50
5:R:228:TYR:HA	5:R:274:THR:HG21	1.93	0.50
2:B:147:SER:OG	2:B:160:SER:OG	2.30	0.50
2:B:58:ILE:HD13	2:B:336:LEU:HD23	1.93	0.50
4:N:68:PHE:HB3	4:N:81:LEU:HD11	1.93	0.50
5:R:342:VAL:O	5:R:346:MET:CB	2.59	0.50
5:R:345:THR:HA	5:R:348:LEU:HB3	1.94	0.50
2:B:314:ARG:HG3	2:B:332:TRP:CD1	2.47	0.50
2:B:71:VAL:HG22	2:B:81:ILE:HG12	1.94	0.49
5:R:349:VAL:HG22	5:R:352:LEU:HD22	1.95	0.49
2:B:269:ILE:HD13	2:B:289:TYR:HE2	1.78	0.48
2:B:95:LEU:HD13	2:B:100:VAL:HG11	1.94	0.48
2:B:198:LEU:HD12	2:B:210:LEU:HD21	1.96	0.48
4:N:73:ASP:O	4:N:77:ASN:N	2.46	0.48
2:B:225:HIS:NE2	2:B:243:THR:OG1	2.40	0.48
2:B:103:CYS:HA	2:B:113:ALA:O	2.14	0.47
2:B:106:ALA:HB3	2:B:110:ASN:H	1.78	0.47
4:N:70:ILE:HA	4:N:80:TYR:O	2.15	0.47
2:B:183:HIS:CE1	2:B:203:ALA:HB2	2.50	0.46
5:R:377:HIS:O	5:R:381:HIS:ND1	2.43	0.46
5:R:278:ALA:O	5:R:282:ALA:CB	2.64	0.46
5:R:366:LYS:HG2	5:R:370:LYS:HE3	1.97	0.46
1:A:10:GLU:HA	1:A:13:ARG:HG2	1.97	0.46
1:A:212:PHE:O	1:A:218:ASN:HA	2.16	0.46

Continued on next page...

Continued from previous page...

Atom-1	Atom-2	Interatomic distance (Å)	Clash overlap (Å)
1:A:372:ILE:HA	1:A:375:VAL:HG12	1.97	0.46
2:B:50:THR:HG23	2:B:337:LYS:HG2	1.98	0.46
3:G:11:GLN:HA	3:G:14:LYS:HE2	1.99	0.45
2:B:228:ASP:N	2:B:228:ASP:OD1	2.47	0.45
5:R:388:ALA:O	5:R:392:CYS:CB	2.57	0.45
4:N:88:PRO:HA	4:N:126:VAL:HG11	1.98	0.45
2:B:283:ARG:NE	2:B:298:ASP:OD1	2.40	0.45
2:B:79:LEU:HD23	2:B:95:LEU:HD21	1.99	0.45
2:B:200:VAL:HG13	2:B:232:ILE:HD13	1.97	0.45
5:R:276:ILE:O	5:R:280:THR:CB	2.62	0.45
2:B:231:ALA:HB3	2:B:275:SER:HA	1.99	0.45
5:R:141:LYS:O	5:R:145:ALA:CB	2.65	0.44
2:B:160:SER:HB3	2:B:190:LEU:HD22	1.99	0.44
4:N:45:LEU:HD13	4:N:112:SER:HA	2.00	0.44
2:B:222:PHE:HE1	2:B:258:ASP:HA	1.83	0.44
5:R:389:THR:O	5:R:393:PHE:HB3	2.17	0.44
5:R:160:ILE:HD13	5:R:160:ILE:HA	1.83	0.43
4:N:104:THR:OG1	4:N:106:ASP:OD1	2.35	0.43
2:B:46:ARG:HB2	2:B:48:ARG:HH12	1.83	0.43
2:B:165:THR:HG22	2:B:181:THR:HG22	2.01	0.43
2:B:249:THR:HG22	2:B:265:SER:HB3	2.00	0.43
5:R:242:ILE:HG22	5:R:315:PHE:HE2	1.83	0.43
2:B:271:CYS:HB2	2:B:290:ASP:HB2	2.00	0.42
2:B:308:LEU:HD12	2:B:308:LEU:HA	1.86	0.42
1:A:228:ARG:NH1	1:A:230:GLU:OE1	2.50	0.42
4:N:111:THR:O	4:N:118:ARG:NH2	2.50	0.42
1:A:231:ARG:HG2	1:A:234:TRP:CZ2	2.54	0.42
4:N:38:ARG:HG2	4:N:94:TYR:CE1	2.54	0.42
1:A:388:LEU:HD22	1:A:394:LEU:HB2	2.00	0.42
5:R:322:VAL:HA	5:R:325:THR:HG22	2.02	0.42
2:B:68:ARG:HG3	2:B:85:TYR:CD2	2.55	0.42
1:A:246:PHE:HZ	1:A:276:ILE:HG12	1.84	0.42
2:B:15:LYS:HB3	3:G:19:LEU:HD11	2.02	0.42
5:R:219:CYS:O	5:R:223:HIS:HB2	2.20	0.42
5:R:414:ASN:HA	5:R:417:TRP:HD1	1.85	0.42
2:B:197:ARG:NH2	2:B:214:ARG:HG2	2.35	0.41
5:R:236:TRP:CE3	5:R:266:GLY:HA3	2.55	0.41
2:B:57:LYS:HD2	2:B:332:TRP:CE3	2.56	0.41
2:B:198:LEU:HD12	2:B:210:LEU:HD11	2.02	0.41
2:B:93:ILE:HG12	2:B:133:VAL:HG21	2.02	0.41
5:R:313:PHE:HA	5:R:354:ILE:HD12	2.03	0.40

Continued on next page...

Continued from previous page...

Atom-1	Atom-2	Interatomic distance (Å)	Clash overlap (Å)
5:R:349:VAL:O	5:R:351:LEU:N	2.54	0.40
2:B:68:ARG:HG3	2:B:85:TYR:HD2	1.87	0.40
2:B:296:VAL:O	2:B:305:ALA:N	2.55	0.40

There are no symmetry-related clashes.

5.3 Torsion angles [i](#)

5.3.1 Protein backbone [i](#)

In the following table, the Percentiles column shows the percent Ramachandran outliers of the chain as a percentile score with respect to all PDB entries followed by that with respect to all EM entries.

The Analysed column shows the number of residues for which the backbone conformation was analysed, and the total number of residues.

Mol	Chain	Analysed	Favoured	Allowed	Outliers	Percentiles	
1	A	173/380 (46%)	171 (99%)	2 (1%)	0	100	100
2	B	338/351 (96%)	319 (94%)	19 (6%)	0	100	100
3	G	53/68 (78%)	53 (100%)	0	0	100	100
4	N	126/138 (91%)	120 (95%)	6 (5%)	0	100	100
5	R	258/501 (52%)	243 (94%)	15 (6%)	0	100	100
All	All	948/1438 (66%)	906 (96%)	42 (4%)	0	100	100

There are no Ramachandran outliers to report.

5.3.2 Protein sidechains [i](#)

In the following table, the Percentiles column shows the percent sidechain outliers of the chain as a percentile score with respect to all PDB entries followed by that with respect to all EM entries.

The Analysed column shows the number of residues for which the sidechain conformation was analysed, and the total number of residues.

Mol	Chain	Analysed	Rotameric	Outliers	Percentiles	
1	A	166/341 (49%)	166 (100%)	0	100	100

Continued on next page...

Continued from previous page...

Mol	Chain	Analysed	Rotameric	Outliers	Percentiles	
2	B	275/293 (94%)	273 (99%)	2 (1%)	84	90
3	G	44/56 (79%)	44 (100%)	0	100	100
4	N	105/115 (91%)	105 (100%)	0	100	100
5	R	215/445 (48%)	213 (99%)	2 (1%)	78	87
All	All	805/1250 (64%)	801 (100%)	4 (0%)	89	93

All (4) residues with a non-rotameric sidechain are listed below:

Mol	Chain	Res	Type
2	B	146	LEU
2	B	340	ASN
5	R	297	LEU
5	R	372	TYR

Sometimes sidechains can be flipped to improve hydrogen bonding and reduce clashes. All (4) such sidechains are listed below:

Mol	Chain	Res	Type
1	A	377	ASN
4	N	31	ASN
5	R	233	ASN
5	R	302	HIS

5.3.3 RNA [i](#)

There are no RNA molecules in this entry.

5.4 Non-standard residues in protein, DNA, RNA chains [i](#)

There are no non-standard protein/DNA/RNA residues in this entry.

5.5 Carbohydrates [i](#)

There are no monosaccharides in this entry.

5.6 Ligand geometry [i](#)

There are no ligands in this entry.

5.7 Other polymers

There are no such residues in this entry.

5.8 Polymer linkage issues

There are no chain breaks in this entry.

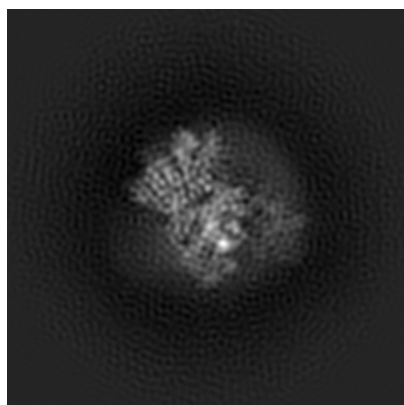
6 Map visualisation [i](#)

This section contains visualisations of the EMDB entry EMD-8623. These allow visual inspection of the internal detail of the map and identification of artifacts.

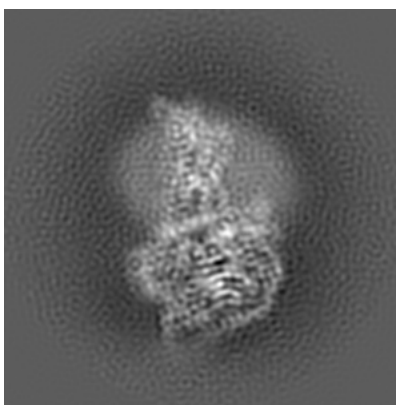
No raw map or half-maps were deposited for this entry and therefore no images, graphs, etc. pertaining to the raw map can be shown.

6.1 Orthogonal projections [i](#)

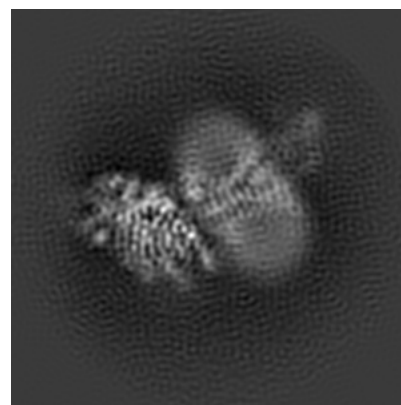
6.1.1 Primary map



X



Y

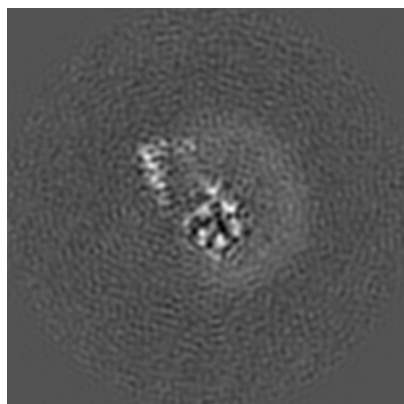


Z

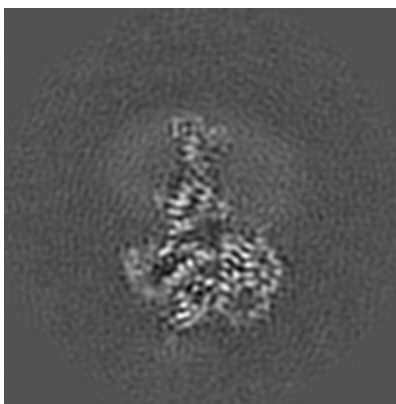
The images above show the map projected in three orthogonal directions.

6.2 Central slices [i](#)

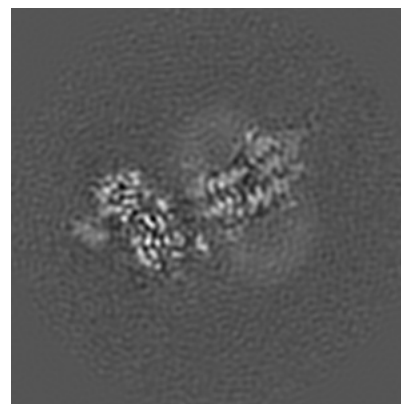
6.2.1 Primary map



X Index: 100



Y Index: 100

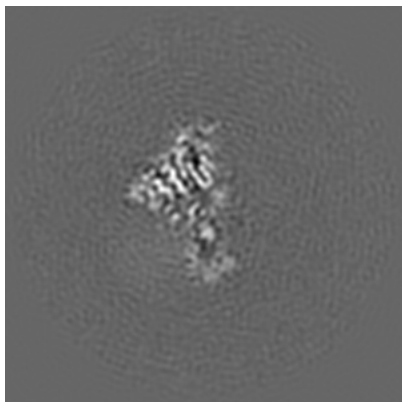


Z Index: 100

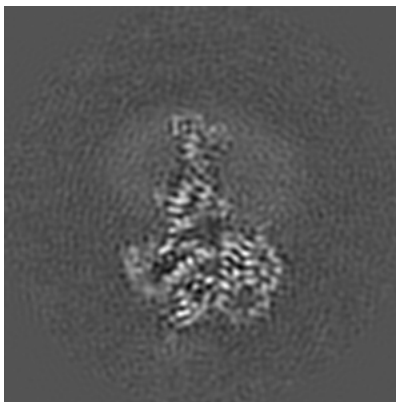
The images above show central slices of the map in three orthogonal directions.

6.3 Largest variance slices [i](#)

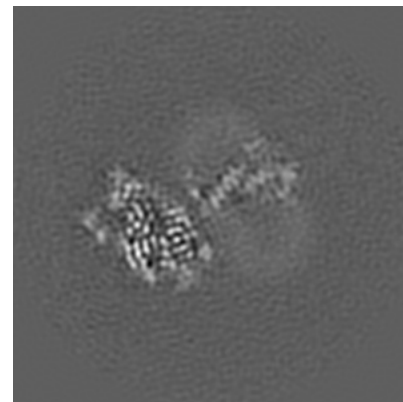
6.3.1 Primary map



X Index: 66



Y Index: 100



Z Index: 108

The images above show the largest variance slices of the map in three orthogonal directions.

6.4 Orthogonal surface views [i](#)

6.4.1 Primary map



X



Y



Z

The images above show the 3D surface view of the map at the recommended contour level 0.05. These images, in conjunction with the slice images, may facilitate assessment of whether an appropriate contour level has been provided.

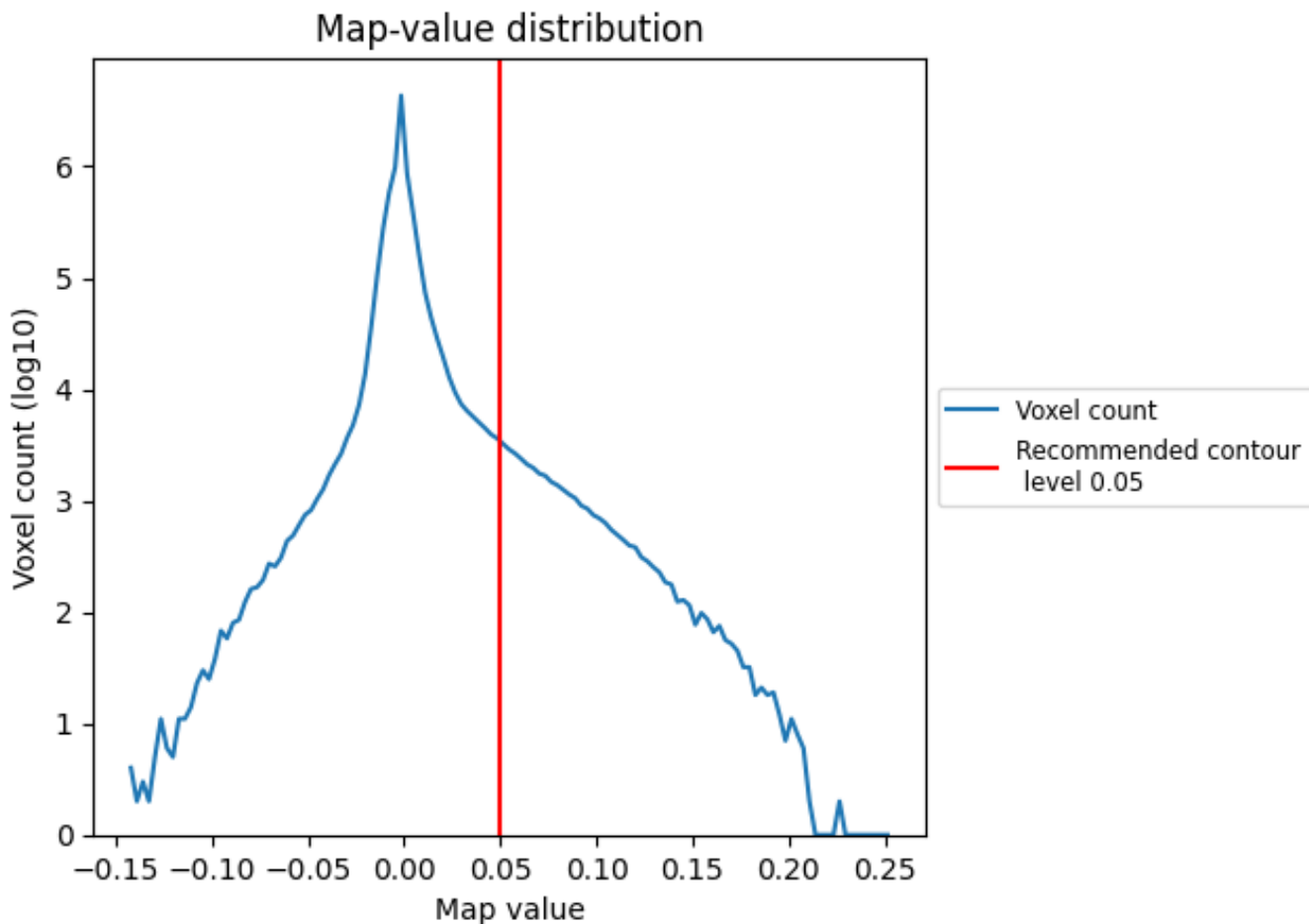
6.5 Mask visualisation

This section was not generated. No masks/segmentation were deposited.

7 Map analysis [i](#)

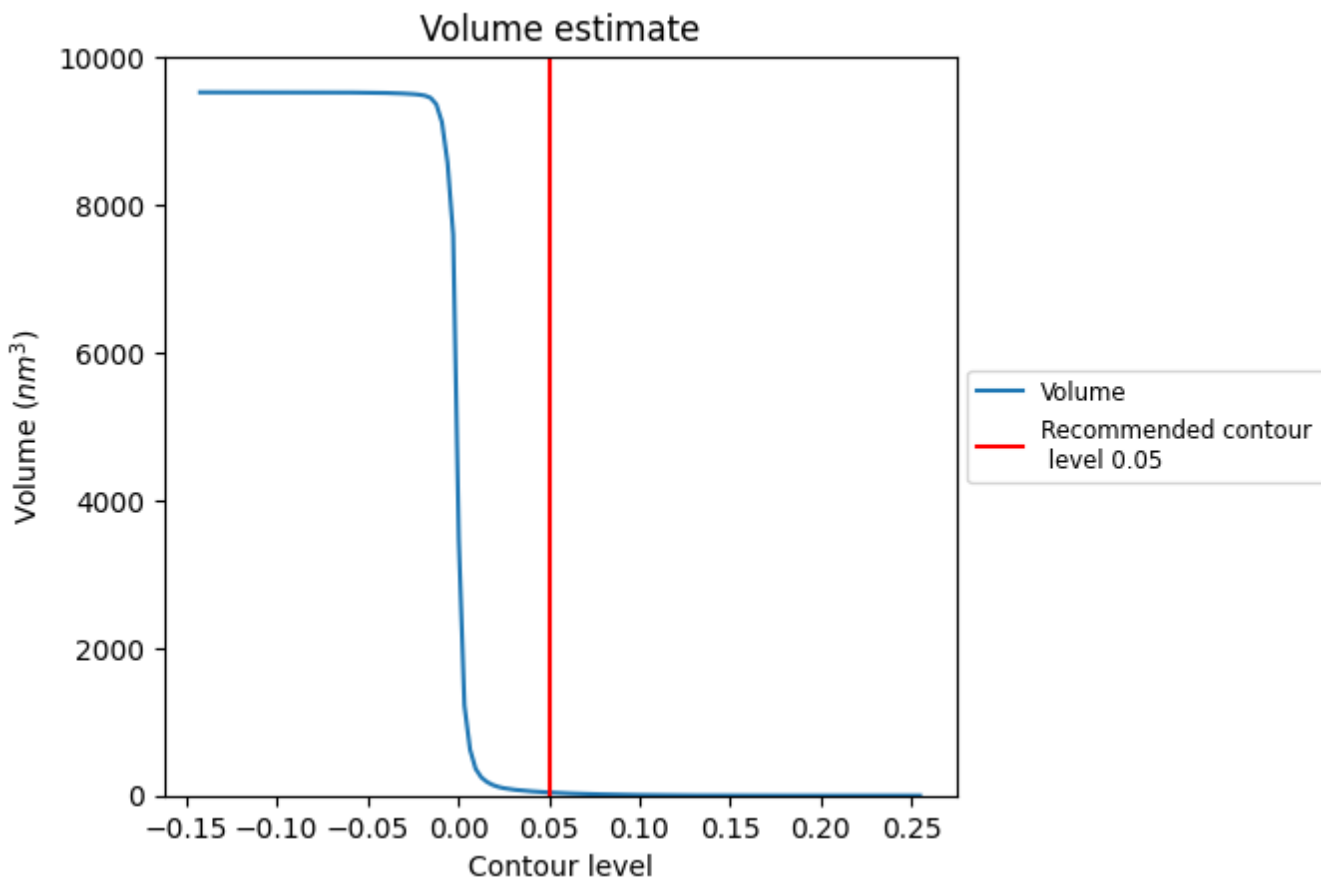
This section contains the results of statistical analysis of the map.

7.1 Map-value distribution [i](#)



The map-value distribution is plotted in 128 intervals along the x-axis. The y-axis is logarithmic. A spike in this graph at zero usually indicates that the volume has been masked.

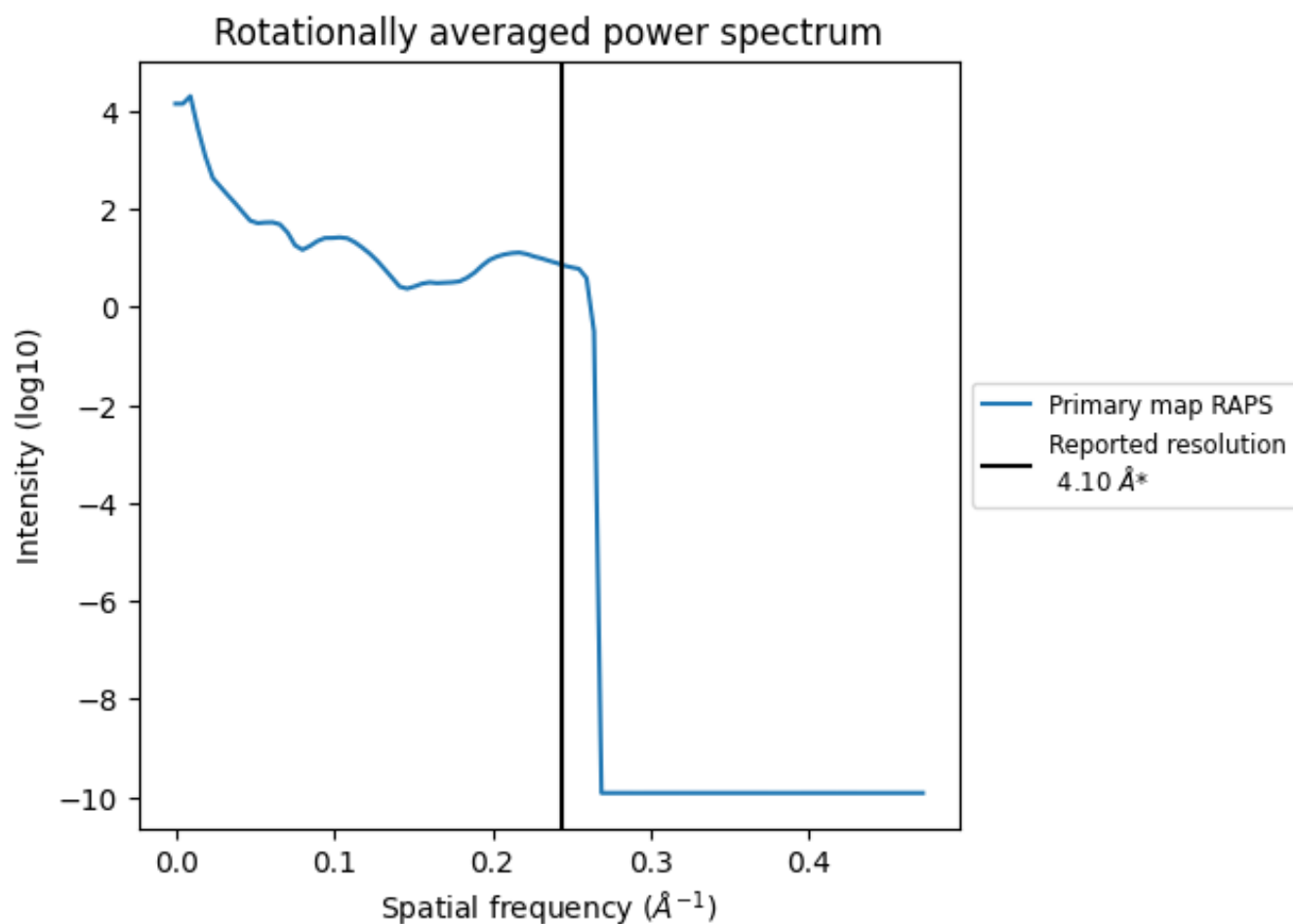
7.2 Volume estimate [i](#)



The volume at the recommended contour level is 42 nm³; this corresponds to an approximate mass of 38 kDa.

The volume estimate graph shows how the enclosed volume varies with the contour level. The recommended contour level is shown as a vertical line and the intersection between the line and the curve gives the volume of the enclosed surface at the given level.

7.3 Rotationally averaged power spectrum i



*Reported resolution corresponds to spatial frequency of 0.244 Å⁻¹

8 Fourier-Shell correlation

This section was not generated. No FSC curve or half-maps provided.

9 Map-model fit [i](#)

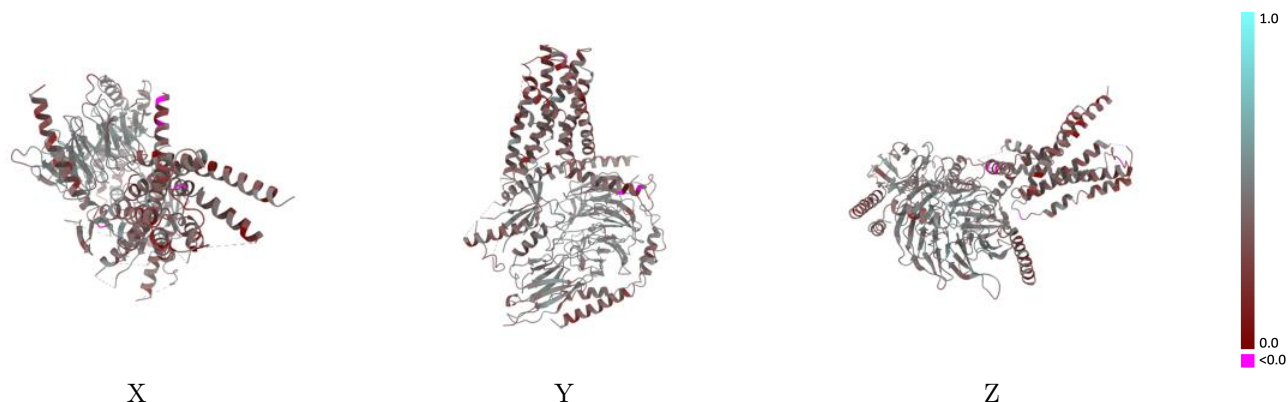
This section contains information regarding the fit between EMDB map EMD-8623 and PDB model 5UZ7. Per-residue inclusion information can be found in section 3 on page 6.

9.1 Map-model overlay [i](#)



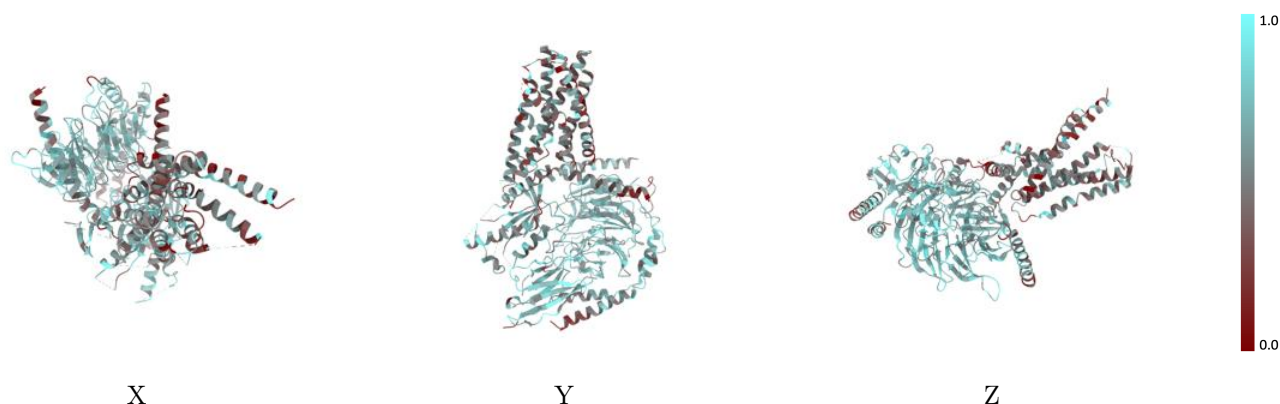
The images above show the 3D surface view of the map at the recommended contour level 0.05 at 50% transparency in yellow overlaid with a ribbon representation of the model coloured in blue. These images allow for the visual assessment of the quality of fit between the atomic model and the map.

9.2 Q-score mapped to coordinate model [\(i\)](#)



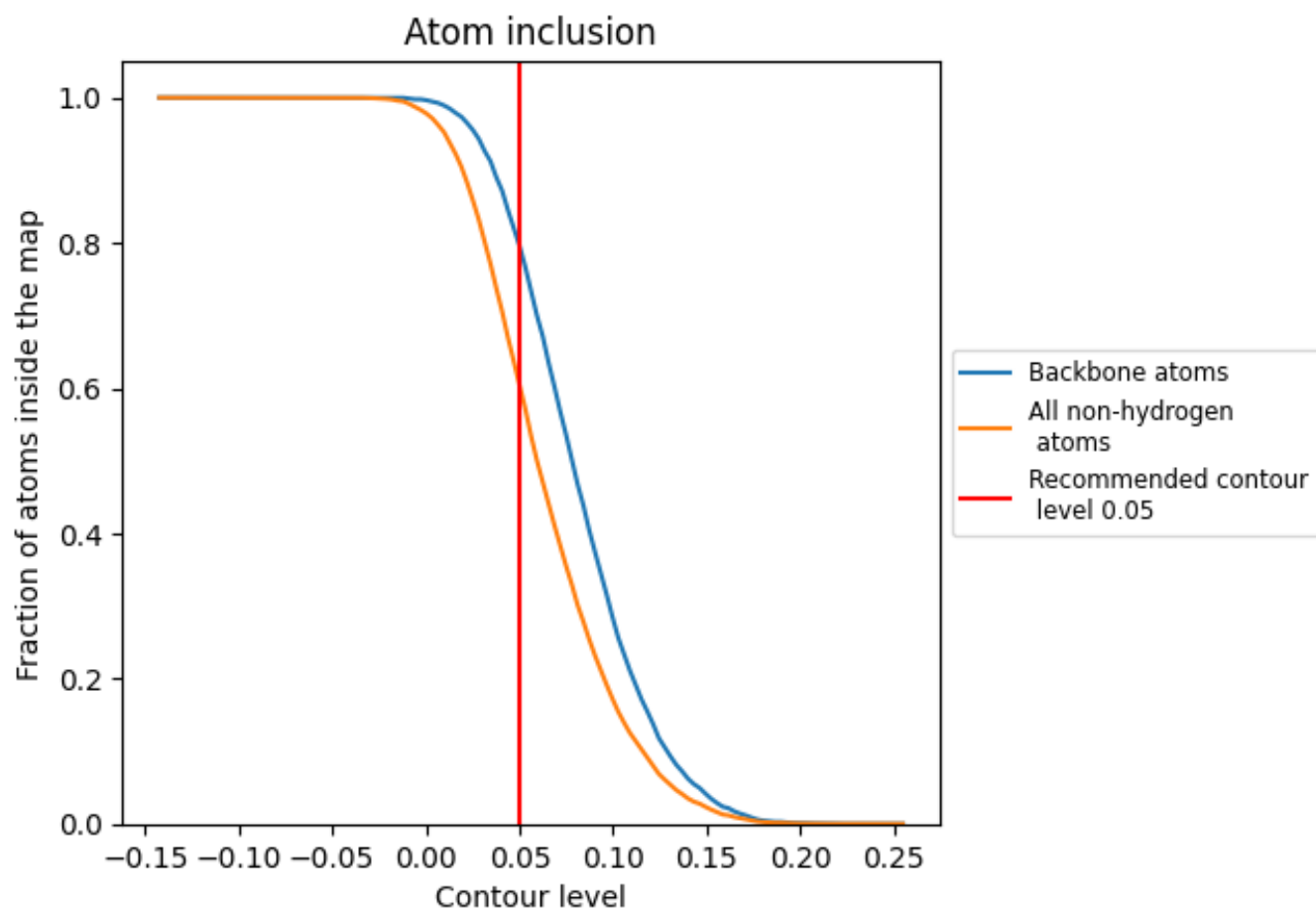
The images above show the model with each residue coloured according to its Q-score. This shows their resolvability in the map with higher Q-score values reflecting better resolvability. Please note: Q-score is calculating the resolvability of atoms, and thus high values are only expected at resolutions at which atoms can be resolved. Low Q-score values may therefore be expected for many entries.

9.3 Atom inclusion mapped to coordinate model [\(i\)](#)



The images above show the model with each residue coloured according to its atom inclusion. This shows to what extent they are inside the map at the recommended contour level (0.05).













9.4 Atom inclusion [i](#)



At the recommended contour level, 80% of all backbone atoms, 60% of all non-hydrogen atoms, are inside the map.

9.5 Map-model fit summary

The table lists the average atom inclusion at the recommended contour level (0.05) and Q-score for the entire model and for each chain.

Chain	Atom inclusion	Q-score
All	 0.6041	 0.4130
A	 0.6087	 0.4100
B	 0.6797	 0.4540
G	 0.6223	 0.3920
N	 0.6881	 0.4550
R	 0.4667	 0.3480

