



Full wwPDB EM Validation Report ⓘ

Nov 8, 2022 – 09:09 AM JST

PDB ID : 5ZAL
EMDB ID : EMD-6905
Title : Cryo-EM structure of human Dicer and its complexes with a pre-miRNA substrate
Authors : Liu, Z.; Wang, J.; Cheng, H.; Ke, X.; Sun, L.; Zhang, Q.C.; Wang, H.-W.
Deposited on : 2018-02-07
Resolution : 4.70 Å (reported)
Based on initial model : 5ZAK

This is a Full wwPDB EM Validation Report for a publicly released PDB entry.

We welcome your comments at validation@mail.wwpdb.org

A user guide is available at

<https://www.wwpdb.org/validation/2017/EMValidationReportHelp>

with specific help available everywhere you see the ⓘ symbol.

The types of validation reports are described at

<http://www.wwpdb.org/validation/2017/FAQs#types>.

The following versions of software and data (see [references ⓘ](#)) were used in the production of this report:

EMDB validation analysis : 0.0.1.dev43
MolProbity : 4.02b-467
Percentile statistics : 20191225.v01 (using entries in the PDB archive December 25th 2019)
MapQ : 1.9.9
Ideal geometry (proteins) : Engh & Huber (2001)
Ideal geometry (DNA, RNA) : Parkinson et al. (1996)
Validation Pipeline (wwPDB-VP) : 2.31.2

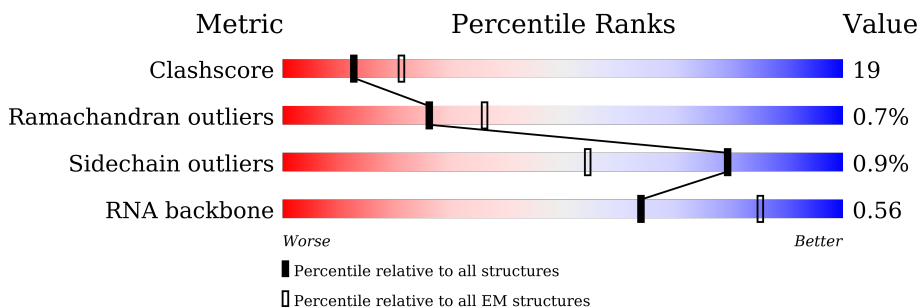
1 Overall quality at a glance i

The following experimental techniques were used to determine the structure:

ELECTRON MICROSCOPY

The reported resolution of this entry is 4.70 Å.

Percentile scores (ranging between 0-100) for global validation metrics of the entry are shown in the following graphic. The table shows the number of entries on which the scores are based.



Metric	Whole archive (#Entries)	EM structures (#Entries)
Clashscore	158937	4297
Ramachandran outliers	154571	4023
Sidechain outliers	154315	3826
RNA backbone	4643	859

The table below summarises the geometric issues observed across the polymeric chains and their fit to the map. The red, orange, yellow and green segments of the bar indicate the fraction of residues that contain outliers for ≥ 3 , 2, 1 and 0 types of geometric quality criteria respectively. A grey segment represents the fraction of residues that are not modelled. The numeric value for each fraction is indicated below the corresponding segment, with a dot representing fractions $\leq 5\%$. The upper red bar (where present) indicates the fraction of residues that have poor fit to the EM map (all-atom inclusion $< 40\%$). The numeric value is given above the bar.

Mol	Chain	Length	Quality of chain
1	A	1922	
2	B	366	
3	C	73	

2 Entry composition

There are 3 unique types of molecules in this entry. The entry contains 12346 atoms, of which 0 are hydrogens and 0 are deuteriums.

In the tables below, the AltConf column contains the number of residues with at least one atom in alternate conformation and the Trace column contains the number of residues modelled with at most 2 atoms.

- Molecule 1 is a protein called Endoribonuclease Dicer.

Mol	Chain	Residues	Atoms					AltConf	Trace
			Total	C	N	O	S		
1	A	1314	10552	6742	1807	1943	60	0	0

- Molecule 2 is a protein called RISC-loading complex subunit TARBP2.

Mol	Chain	Residues	Atoms					AltConf	Trace
			Total	C	N	O	S		
2	B	75	560	345	99	110	6	0	0

- Molecule 3 is a RNA chain called RNA (73-mer).

Mol	Chain	Residues	Atoms					AltConf	Trace
			Total	C	N	O	P		
3	C	58	1234	553	216	408	57	0	0

4 Experimental information

Property	Value	Source
EM reconstruction method	SINGLE PARTICLE	Depositor
Imposed symmetry	POINT, C1	Depositor
Number of particles used	130000	Depositor
Resolution determination method	FSC 0.143 CUT-OFF	Depositor
CTF correction method	PHASE FLIPPING AND AMPLITUDE CORRECTION	Depositor
Microscope	FEI TITAN KRIOS	Depositor
Voltage (kV)	300	Depositor
Electron dose ($e^-/\text{\AA}^2$)	50.0	Depositor
Minimum defocus (nm)	2500	Depositor
Maximum defocus (nm)	3500	Depositor
Magnification	36496	Depositor
Image detector	GATAN K2 SUMMIT (4k x 4k)	Depositor
Maximum map value	0.145	Depositor
Minimum map value	-0.057	Depositor
Average map value	0.001	Depositor
Map value standard deviation	0.006	Depositor
Recommended contour level	0.04	Depositor
Map size (\AA)	246.6, 246.6, 246.6	wwPDB
Map dimensions	180, 180, 180	wwPDB
Map angles ($^\circ$)	90.0, 90.0, 90.0	wwPDB
Pixel spacing (\AA)	1.37, 1.37, 1.37	Depositor

5 Model quality i

5.1 Standard geometry i

The Z score for a bond length (or angle) is the number of standard deviations the observed value is removed from the expected value. A bond length (or angle) with $|Z| > 5$ is considered an outlier worth inspection. RMSZ is the root-mean-square of all Z scores of the bond lengths (or angles).

Mol	Chain	Bond lengths		Bond angles	
		RMSZ	# Z >5	RMSZ	# Z >5
1	A	0.45	0/10766	0.76	13/14558 (0.1%)
2	B	0.32	0/566	0.56	0/765
3	C	0.57	0/1379	1.25	6/2145 (0.3%)
All	All	0.46	0/12711	0.83	19/17468 (0.1%)

Chiral center outliers are detected by calculating the chiral volume of a chiral center and verifying if the center is modelled as a planar moiety or with the opposite hand. A planarity outlier is detected by checking planarity of atoms in a peptide group, atoms in a mainchain group or atoms of a sidechain that are expected to be planar.

Mol	Chain	#Chirality outliers	#Planarity outliers
1	A	0	20

There are no bond length outliers.

All (19) bond angle outliers are listed below:

Mol	Chain	Res	Type	Atoms	Z	Observed(°)	Ideal(°)
1	A	649	LEU	CA-CB-CG	7.43	132.39	115.30
1	A	1591	LEU	CA-CB-CG	6.49	130.22	115.30
1	A	99	LEU	CA-CB-CG	6.46	130.15	115.30
1	A	1857	LEU	CA-CB-CG	6.27	129.71	115.30
3	C	50	A	N7-C8-N9	6.08	116.84	113.80
3	C	16	U	C5-C6-N1	5.91	125.65	122.70
3	C	49	U	C5-C6-N1	5.85	125.62	122.70
1	A	649	LEU	C-N-CA	5.83	136.28	121.70
1	A	134	THR	C-N-CA	5.62	135.75	121.70
1	A	368	LEU	CA-CB-CG	5.50	127.95	115.30
1	A	1375	ASP	N-CA-C	5.32	125.37	111.00
1	A	1617	LEU	CA-CB-CG	5.19	127.24	115.30
3	C	73	C	C6-N1-C2	-5.18	118.23	120.30
1	A	192	LEU	CA-CB-CG	-5.15	103.46	115.30
3	C	24	U	N3-C2-O2	-5.15	118.60	122.20

Continued on next page...

Continued from previous page...

Mol	Chain	Res	Type	Atoms	Z	Observed(°)	Ideal(°)
1	A	505	LEU	CA-CB-CG	5.09	127.01	115.30
1	A	329	LEU	CA-CB-CG	5.07	126.96	115.30
3	C	13	U	N1-C2-O2	5.04	126.33	122.80
1	A	1567	LEU	CA-CB-CG	-5.03	103.72	115.30

There are no chirality outliers.

All (20) planarity outliers are listed below:

Mol	Chain	Res	Type	Group
1	A	1012	LEU	Peptide
1	A	126	ASN	Peptide
1	A	1292	PRO	Peptide
1	A	1293	ASN	Peptide
1	A	134	THR	Peptide
1	A	137	ARG	Peptide
1	A	164	LEU	Peptide
1	A	168	ASP	Peptide
1	A	1687	PHE	Peptide
1	A	1698	THR	Peptide
1	A	1752	TYR	Peptide
1	A	1766	PHE	Peptide
1	A	217	GLU	Peptide
1	A	218	GLU	Peptide
1	A	258	GLY	Peptide
1	A	478	PHE	Peptide
1	A	493	GLN	Peptide
1	A	516	LEU	Peptide
1	A	644	ASP	Peptide
1	A	661	GLY	Peptide

5.2 Too-close contacts

In the following table, the Non-H and H(model) columns list the number of non-hydrogen atoms and hydrogen atoms in the chain respectively. The H(added) column lists the number of hydrogen atoms added and optimized by MolProbity. The Clashes column lists the number of clashes within the asymmetric unit, whereas Symm-Clashes lists symmetry-related clashes.

Mol	Chain	Non-H	H(model)	H(added)	Clashes	Symm-Clashes
1	A	10552	0	10711	402	0
2	B	560	0	559	27	0
3	C	1234	0	621	26	0

Continued on next page...

Continued from previous page...

Mol	Chain	Non-H	H(model)	H(added)	Clashes	Symm-Clashes
All	All	12346	0	11891	444	0

The all-atom clashscore is defined as the number of clashes found per 1000 atoms (including hydrogen atoms). The all-atom clashscore for this structure is 19.

All (444) close contacts within the same asymmetric unit are listed below, sorted by their clash magnitude.

Atom-1	Atom-2	Interatomic distance (Å)	Clash overlap (Å)
1:A:574:GLU:O	1:A:577:LYS:HB3	1.66	0.96
3:C:2:G:H1	3:C:70:U:H3	1.11	0.95
1:A:1066:THR:O	1:A:1070:LEU:HB2	1.70	0.92
1:A:79:LYS:O	1:A:83:TYR:HB2	1.73	0.89
1:A:933:ILE:O	1:A:1038:CYS:HA	1.76	0.85
1:A:818:VAL:O	1:A:824:GLU:HA	1.76	0.84
1:A:136:GLU:HB3	1:A:139:ASN:H	1.48	0.79
1:A:248:SER:H	1:A:554:ARG:HH22	1.35	0.75
1:A:447:PHE:HB2	1:A:536:ARG:HA	1.67	0.74
3:C:5:G:N1	3:C:67:U:N3	2.37	0.72
1:A:703:HIS:NE2	1:A:709:ASP:OD2	2.22	0.71
3:C:5:G:H1	3:C:67:U:H3	1.38	0.70
1:A:1318:LEU:HD12	1:A:1568:GLY:HA2	1.73	0.69
3:C:5:G:N2	3:C:67:U:O2	2.25	0.69
1:A:1692:TYR:HA	1:A:1761:VAL:HG23	1.76	0.68
1:A:1321:SER:HB2	1:A:1714:TYR:HA	1.74	0.68
1:A:580:LYS:O	1:A:583:GLU:HB3	1.94	0.68
1:A:1747:SER:O	1:A:1751:LYS:HB2	1.95	0.67
1:A:513:THR:HA	1:A:516:LEU:HB2	1.76	0.67
1:A:932:ILE:HA	1:A:1039:ALA:O	1.94	0.67
1:A:906:ARG:HG3	1:A:907:ILE:HG12	1.76	0.67
1:A:656:ARG:HB2	1:A:664:TYR:HB2	1.77	0.67
1:A:1594:ILE:HA	1:A:1596:ARG:HG2	1.76	0.67
1:A:1689:HIS:HB3	1:A:1760:ALA:HB2	1.77	0.66
1:A:675:LEU:HA	1:A:1617:LEU:HD21	1.77	0.66
1:A:534:VAL:O	1:A:560:TYR:HA	1.95	0.66
1:A:700:GLU:O	1:A:704:LYS:HB2	1.94	0.66
1:A:511:HIS:HA	1:A:514:ASN:HD22	1.61	0.65
1:A:786:ASN:O	1:A:789:ARG:NH1	2.29	0.65
1:A:1906:ARG:HB3	1:A:1910:ARG:HH21	1.60	0.65
1:A:960:PHE:HB2	1:A:965:TYR:HB2	1.76	0.65
1:A:374:THR:HG1	1:A:379:LYS:H	1.45	0.65
2:B:337:CYS:HB3	2:B:354:ARG:HD2	1.79	0.64

Continued on next page...

Continued from previous page...

Atom-1	Atom-2	Interatomic distance (Å)	Clash overlap (Å)
1:A:1314:ARG:HB3	1:A:1721:TYR:HE1	1.60	0.64
1:A:251:CYS:H	1:A:559:ASN:HA	1.61	0.64
1:A:937:ARG:NH1	1:A:938:ASN:OD1	2.30	0.64
1:A:1028:GLN:HE21	3:C:71:A:H4'	1.62	0.64
1:A:581:ALA:O	1:A:584:LYS:HB2	1.98	0.64
1:A:1067:ALA:HB1	1:A:1294:PRO:HB3	1.80	0.64
1:A:1697:ILE:HG22	1:A:1698:THR:HG23	1.79	0.63
1:A:1583:LEU:O	1:A:1587:GLY:N	2.30	0.63
1:A:1701:TYR:O	1:A:1704:LEU:HB2	1.98	0.63
1:A:1614:GLN:NE2	1:A:1699:ASP:O	2.31	0.63
1:A:769:TYR:HB2	1:A:806:THR:O	1.99	0.63
1:A:996:ARG:NH2	1:A:1001:THR:OG1	2.31	0.63
1:A:1855:ARG:HG2	1:A:1898:ARG:HH12	1.62	0.63
1:A:443:CYS:SG	1:A:444:GLY:N	2.72	0.63
1:A:1353:ASN:O	1:A:1357:TYR:CB	2.47	0.63
1:A:126:ASN:OD1	1:A:131:ALA:N	2.30	0.62
1:A:84:GLN:O	1:A:1661:HIS:ND1	2.32	0.62
1:A:241:VAL:HG13	1:A:242:VAL:HG23	1.81	0.62
1:A:211:ASN:O	1:A:222:LYS:NZ	2.30	0.61
1:A:374:THR:OG1	1:A:379:LYS:N	2.29	0.61
1:A:575:ASP:O	1:A:578:THR:HB	2.01	0.61
1:A:1060:ARG:NH1	1:A:1063:CYS:SG	2.74	0.61
1:A:1553:CYS:HB3	1:A:1557:LYS:HE2	1.83	0.60
1:A:225:LYS:HA	1:A:228:LYS:HE3	1.84	0.60
1:A:509:ARG:HE	1:A:528:ILE:HD11	1.66	0.60
1:A:945:PHE:HA	1:A:991:ASP:O	2.02	0.60
1:A:643:SER:OG	1:A:672:ASN:N	2.34	0.60
1:A:1852:SER:OG	1:A:1898:ARG:NH2	2.35	0.60
1:A:250:PRO:HG2	1:A:252:GLU:HB2	1.83	0.59
1:A:1839:ARG:HA	1:A:1842:ILE:HB	1.85	0.59
1:A:168:ASP:H	1:A:198:SER:HB2	1.67	0.59
1:A:190:MET:HB2	1:A:229:ILE:HG23	1.84	0.59
1:A:502:GLU:HG2	1:A:505:LEU:HD12	1.85	0.59
3:C:27:G:H22	3:C:44:G:H1	1.50	0.58
1:A:1723:ASP:OD2	1:A:1726:GLN:N	2.36	0.58
1:A:884:VAL:O	1:A:888:SER:N	2.37	0.58
1:A:782:PRO:HD2	1:A:785:LEU:HD12	1.84	0.58
1:A:283:ASP:OD2	2:B:324:GLN:NE2	2.35	0.58
1:A:1577:ARG:HH21	1:A:1602:ALA:HB1	1.68	0.58
1:A:84:GLN:HA	1:A:1661:HIS:HB3	1.86	0.58
1:A:461:ILE:HB	1:A:469:PRO:HG3	1.85	0.57

Continued on next page...

Continued from previous page...

Atom-1	Atom-2	Interatomic distance (Å)	Clash overlap (Å)
1:A:89:PHE:H	1:A:92:ASN:HD22	1.53	0.57
1:A:137:ARG:HE	1:A:144:LYS:HE2	1.69	0.57
1:A:653:CYS:HB3	1:A:667:LEU:HD22	1.86	0.57
1:A:320:LYS:HB3	1:A:459:ARG:HD2	1.85	0.57
1:A:848:ARG:O	1:A:852:TYR:CB	2.53	0.57
1:A:1592:PRO:O	1:A:1595:LYS:N	2.36	0.57
1:A:1353:ASN:O	1:A:1357:TYR:HB2	2.05	0.57
1:A:137:ARG:O	1:A:137:ARG:NH1	2.37	0.57
1:A:1071:ARG:HE	1:A:1293:ASN:HD22	1.53	0.56
1:A:442:LEU:HB3	1:A:515:LEU:HD13	1.87	0.56
1:A:472:ALA:HB3	1:A:485:GLY:HA2	1.87	0.56
1:A:449:GLU:OE2	1:A:450:ARG:NH1	2.38	0.56
1:A:674:PRO:HG2	1:A:675:LEU:HG	1.88	0.56
1:A:772:VAL:HB	1:A:830:GLU:HB2	1.86	0.56
1:A:57:ASP:OD1	1:A:58:HIS:ND1	2.35	0.56
1:A:384:LEU:HD11	1:A:535:VAL:HG11	1.88	0.56
1:A:1891:LYS:O	1:A:1907:ARG:NH1	2.37	0.56
1:A:89:PHE:HD2	1:A:91:ARG:HH12	1.53	0.56
1:A:137:ARG:HB2	1:A:141:GLU:HG2	1.87	0.56
2:B:331:THR:OG1	2:B:333:PRO:O	2.24	0.56
1:A:121:VAL:HG12	1:A:147:VAL:HB	1.88	0.56
1:A:458:ASN:HA	1:A:469:PRO:HG2	1.87	0.56
1:A:120:LYS:HG3	1:A:145:HIS:HA	1.88	0.55
1:A:680:VAL:HG12	1:A:682:PRO:HD3	1.89	0.55
1:A:859:ARG:HH21	1:A:944:ARG:HH22	1.53	0.55
1:A:1909:LEU:HD23	1:A:1912:LEU:HD13	1.88	0.55
3:C:2:G:N1	3:C:70:U:N3	2.37	0.55
1:A:320:LYS:HB2	1:A:456:VAL:HG22	1.87	0.55
1:A:1363:LYS:O	1:A:1368:ARG:NH1	2.39	0.55
1:A:1658:THR:HA	1:A:1661:HIS:HD2	1.72	0.55
1:A:680:VAL:HG11	1:A:694:VAL:HG13	1.89	0.55
1:A:1569:CYS:O	1:A:1573:SER:N	2.39	0.55
1:A:137:ARG:HB3	1:A:140:GLN:H	1.73	0.54
1:A:520:SER:HB2	1:A:522:VAL:HG23	1.90	0.54
1:A:1344:SER:HA	1:A:1347:ARG:HE	1.71	0.54
1:A:256:ASP:OD1	1:A:385:ARG:NH1	2.40	0.54
1:A:317:CYS:O	1:A:321:VAL:HB	2.08	0.54
1:A:946:TYR:HB2	1:A:991:ASP:HB3	1.90	0.54
2:B:305:GLN:O	2:B:332:GLN:NE2	2.41	0.54
1:A:46:LYS:HB3	1:A:652:LYS:HZ2	1.72	0.54
1:A:325:MET:O	1:A:329:LEU:CB	2.55	0.54

Continued on next page...

Continued from previous page...

Atom-1	Atom-2	Interatomic distance (Å)	Clash overlap (Å)
2:B:318:SER:H	2:B:322:LEU:H	1.54	0.54
1:A:631:ILE:HA	1:A:634:ILE:HB	1.90	0.54
1:A:769:TYR:O	1:A:805:LEU:HA	2.06	0.54
2:B:305:GLN:HE21	2:B:332:GLN:HB2	1.73	0.54
1:A:566:THR:HA	1:A:572:PHE:HB2	1.89	0.54
1:A:1365:LEU:HA	1:A:1368:ARG:HB2	1.90	0.54
1:A:315:PRO:HD2	1:A:388:LYS:HE2	1.89	0.53
1:A:1766:PHE:HD1	1:A:1769:ILE:HD13	1.72	0.53
2:B:338:HIS:O	2:B:354:ARG:NE	2.40	0.53
1:A:582:ILE:O	1:A:585:ILE:HB	2.08	0.53
1:A:929:ASP:OD1	1:A:1046:SER:N	2.38	0.53
1:A:1720:LEU:HB3	1:A:1732:LEU:HD22	1.91	0.53
3:C:2:G:H2'	3:C:3:A:C8	2.43	0.53
3:C:2:G:O6	3:C:70:U:O4	2.26	0.53
1:A:174:PHE:N	1:A:203:LEU:O	2.39	0.53
1:A:1748:LEU:O	1:A:1752:TYR:N	2.42	0.53
1:A:850:HIS:CE1	1:A:873:ASP:H	2.27	0.53
1:A:541:THR:OG1	1:A:542:GLU:N	2.42	0.53
1:A:806:THR:HG22	1:A:876:TYR:HB2	1.90	0.53
1:A:1299:GLN:HA	1:A:1310:PHE:HE2	1.74	0.53
1:A:250:PRO:HB3	1:A:558:SER:HB2	1.90	0.53
1:A:319:ASP:O	1:A:356:HIS:ND1	2.39	0.53
1:A:800:ARG:HA	1:A:881:LEU:O	2.09	0.52
1:A:48:GLN:HA	1:A:51:LEU:HD12	1.91	0.52
1:A:352:LEU:HD23	1:A:355:ILE:HD11	1.91	0.52
1:A:1595:LYS:HG3	1:A:1598:ASP:HB2	1.91	0.52
2:B:289:ALA:O	2:B:357:GLN:NE2	2.41	0.52
1:A:140:GLN:O	1:A:144:LYS:N	2.37	0.52
1:A:374:THR:HG21	1:A:377:VAL:HB	1.92	0.52
1:A:799:THR:HB	1:A:883:VAL:HB	1.90	0.52
1:A:848:ARG:O	1:A:852:TYR:HB2	2.09	0.52
1:A:442:LEU:HD13	1:A:515:LEU:HD22	1.91	0.52
1:A:636:ARG:HH12	1:A:702:LEU:HD13	1.74	0.52
1:A:972:TYR:HB3	1:A:978:LEU:HB2	1.91	0.52
1:A:325:MET:O	1:A:329:LEU:HB3	2.09	0.52
1:A:529:PRO:HA	1:A:553:ALA:HA	1.91	0.52
1:A:845:LEU:HD11	1:A:897:MET:HB3	1.92	0.52
1:A:1857:LEU:O	1:A:1861:GLU:N	2.42	0.52
3:C:2:G:N2	3:C:70:U:O2	2.28	0.52
1:A:175:ASP:HA	1:A:205:LEU:H	1.74	0.52
3:C:2:G:H2'	3:C:3:A:H8	1.75	0.52

Continued on next page...

Continued from previous page...

Atom-1	Atom-2	Interatomic distance (Å)	Clash overlap (Å)
1:A:674:PRO:HD3	1:A:1339:HIS:HE1	1.75	0.52
2:B:353:ARG:NH1	2:B:357:GLN:OE1	2.41	0.52
1:A:312:VAL:HG12	1:A:313:LEU:HG	1.92	0.52
1:A:343:LYS:HG3	2:B:326:LEU:HD13	1.91	0.51
1:A:1580:GLN:O	1:A:1584:CYS:HB2	2.10	0.51
1:A:226:LEU:HA	1:A:229:ILE:HD12	1.92	0.51
1:A:770:LEU:HB3	1:A:833:LYS:H	1.74	0.51
1:A:903:SER:HB3	1:A:906:ARG:HB3	1.92	0.51
1:A:973:LYS:HA	1:A:978:LEU:H	1.74	0.51
3:C:25:A:H2	3:C:47:G:H1	1.56	0.51
1:A:109:GLN:O	1:A:113:VAL:N	2.44	0.51
1:A:274:LEU:HG	1:A:303:LEU:HD22	1.93	0.51
1:A:946:TYR:HD1	1:A:1045:ALA:HB1	1.75	0.51
1:A:656:ARG:O	1:A:664:TYR:N	2.43	0.51
1:A:792:LEU:HD22	1:A:822:SER:HA	1.92	0.51
1:A:862:LYS:NZ	1:A:1377:PRO:O	2.35	0.51
1:A:863:PRO:HD2	1:A:870:THR:HA	1.93	0.51
1:A:779:THR:OG1	1:A:824:GLU:N	2.40	0.51
1:A:1815:LEU:HD12	1:A:1818:ALA:HB3	1.93	0.51
1:A:935:ARG:HD3	1:A:1039:ALA:HB2	1.93	0.51
1:A:1659:LEU:HA	1:A:1662:LEU:HD12	1.93	0.51
1:A:965:TYR:HD1	1:A:970:GLU:HG2	1.75	0.51
1:A:1614:GLN:O	1:A:1618:SER:N	2.41	0.51
1:A:1855:ARG:H	1:A:1898:ARG:HH22	1.57	0.51
1:A:126:ASN:O	1:A:130:ASN:N	2.44	0.50
1:A:136:GLU:H	1:A:138:TRP:HD1	1.57	0.50
1:A:244:ASP:OD1	1:A:554:ARG:NH1	2.44	0.50
1:A:718:GLU:HG2	1:A:721:LYS:HD2	1.93	0.50
1:A:482:HIS:NE2	1:A:495:GLU:O	2.36	0.50
1:A:1023:LYS:HB3	3:C:2:G:H4'	1.92	0.50
1:A:1691:SER:OG	1:A:1761:VAL:N	2.42	0.50
1:A:1370:VAL:HG13	1:A:1372:SER:H	1.76	0.50
1:A:1692:TYR:O	1:A:1696:THR:OG1	2.26	0.50
1:A:1863:GLU:HG3	1:A:1864:THR:HG23	1.92	0.50
1:A:510:ALA:O	1:A:514:ASN:ND2	2.45	0.50
1:A:932:ILE:HB	1:A:1038:CYS:HB3	1.92	0.50
1:A:1359:LEU:HD21	1:A:1586:LEU:HD23	1.93	0.50
1:A:1607:ARG:NE	1:A:1682:TYR:OH	2.42	0.50
1:A:95:ARG:HG3	1:A:169:ILE:HG23	1.92	0.50
1:A:366:ALA:HB1	1:A:389:PRO:HD2	1.93	0.50
1:A:446:ILE:HG22	1:A:448:VAL:HG13	1.93	0.50

Continued on next page...

Continued from previous page...

Atom-1	Atom-2	Interatomic distance (Å)	Clash overlap (Å)
1:A:477:ASN:ND2	1:A:496:ALA:O	2.44	0.50
1:A:1332:PHE:HE1	1:A:1703:ARG:HB3	1.75	0.50
1:A:576:LEU:HA	1:A:579:TYR:HD2	1.76	0.50
1:A:636:ARG:NH2	1:A:699:CYS:SG	2.84	0.50
1:A:1762:SER:H	1:A:1766:PHE:HE2	1.59	0.50
1:A:969:ALA:O	1:A:973:LYS:CB	2.60	0.50
1:A:447:PHE:N	1:A:535:VAL:O	2.37	0.49
1:A:1695:ASN:HD21	1:A:1700:CYS:HA	1.77	0.49
1:A:1907:ARG:HA	1:A:1910:ARG:HG2	1.94	0.49
1:A:1617:LEU:HG	1:A:1698:THR:HG21	1.93	0.49
1:A:508:PHE:HA	1:A:513:THR:HB	1.93	0.49
1:A:1338:ALA:HB1	1:A:1343:LEU:HD11	1.94	0.49
1:A:118:ASP:HB2	1:A:1756:LYS:HB3	1.93	0.49
1:A:668:TYR:HD1	1:A:676:ARG:HE	1.59	0.49
1:A:276:GLU:HA	1:A:279:ASN:HD22	1.77	0.49
1:A:379:LYS:HA	1:A:382:GLU:HB2	1.93	0.49
1:A:1843:GLU:O	1:A:1847:ALA:CB	2.60	0.49
1:A:450:ARG:HA	1:A:521:ILE:HD13	1.94	0.49
1:A:777:LEU:HA	1:A:825:VAL:HG22	1.94	0.49
1:A:1771:ASP:O	1:A:1775:PHE:HB2	2.13	0.49
1:A:1732:LEU:HD23	1:A:1735:LEU:HD12	1.95	0.49
3:C:47:G:H2'	3:C:48:A:H8	1.77	0.49
1:A:309:VAL:HA	1:A:312:VAL:HB	1.94	0.49
1:A:320:LYS:HE2	1:A:460:LEU:HB2	1.93	0.49
1:A:1353:ASN:O	1:A:1357:TYR:HB3	2.11	0.49
3:C:5:G:O6	3:C:67:U:O4	2.31	0.49
1:A:316:TRP:HZ2	1:A:460:LEU:HB3	1.76	0.49
1:A:535:VAL:HG22	1:A:561:ILE:HB	1.94	0.49
1:A:150:MET:HB3	1:A:154:VAL:HB	1.95	0.48
1:A:219:LEU:HA	1:A:222:LYS:HE2	1.94	0.48
1:A:327:ARG:NH2	3:C:27:G:N7	2.61	0.48
1:A:271:LEU:HD13	1:A:310:LEU:HD23	1.94	0.48
1:A:316:TRP:CZ2	1:A:460:LEU:HB3	2.48	0.48
1:A:443:CYS:HB2	1:A:514:ASN:HB3	1.94	0.48
1:A:571:SER:HB2	1:A:575:ASP:HB2	1.94	0.48
1:A:1754:TYR:HE2	1:A:1812:PHE:HD1	1.62	0.48
1:A:445:ILE:H	1:A:534:VAL:HA	1.77	0.48
1:A:532:ASN:HB2	1:A:559:ASN:HD22	1.78	0.48
1:A:1819:ILE:O	1:A:1823:SER:N	2.42	0.48
2:B:345:GLU:OE2	2:B:348:ARG:NH1	2.46	0.48
2:B:314:ILE:HD11	2:B:326:LEU:HG	1.94	0.48

Continued on next page...

Continued from previous page...

Atom-1	Atom-2	Interatomic distance (Å)	Clash overlap (Å)
1:A:151:THR:O	1:A:155:ALA:N	2.41	0.48
1:A:349:ASP:HA	1:A:352:LEU:HD12	1.95	0.48
1:A:773:ILE:HA	1:A:829:ILE:HD13	1.96	0.48
1:A:817:PRO:HA	1:A:825:VAL:O	2.13	0.48
1:A:1841:LEU:HD12	1:A:1844:LYS:HD2	1.96	0.48
1:A:1739:LEU:HD13	1:A:1842:ILE:HG12	1.95	0.48
2:B:313:ASP:OD2	2:B:348:ARG:NH2	2.43	0.48
1:A:140:GLN:NE2	1:A:143:THR:OG1	2.47	0.47
1:A:1297:ILE:O	1:A:1301:LEU:N	2.47	0.47
1:A:487:ASN:HA	1:A:501:GLN:HE22	1.78	0.47
1:A:565:ASP:O	1:A:569:ILE:N	2.40	0.47
1:A:1034:VAL:HG12	1:A:1037:LEU:H	1.79	0.47
1:A:81:LEU:HD13	1:A:94:LYS:HD3	1.95	0.47
1:A:260:PHE:H	1:A:261:THR:HA	1.79	0.47
1:A:577:LYS:O	1:A:581:ALA:N	2.46	0.47
1:A:709:ASP:HB3	1:A:712:LEU:HD11	1.95	0.47
1:A:1688:THR:O	1:A:1695:ASN:ND2	2.47	0.47
2:B:318:SER:HA	2:B:324:GLN:HE21	1.79	0.47
1:A:235:GLU:HG3	1:A:236:THR:H	1.79	0.47
1:A:376:LYS:H	1:A:380:LEU:HD13	1.78	0.47
1:A:571:SER:O	1:A:575:ASP:N	2.47	0.47
1:A:1887:LYS:HD2	1:A:1912:LEU:HA	1.96	0.47
2:B:309:VAL:HG22	2:B:329:LEU:HD23	1.96	0.47
1:A:59:ASN:OD1	1:A:59:ASN:N	2.48	0.47
1:A:239:ASP:HB3	1:A:551:GLY:HA3	1.96	0.47
1:A:849:LEU:HA	1:A:852:TYR:HB3	1.96	0.47
1:A:692:ARG:HE	1:A:696:LEU:HD11	1.79	0.47
1:A:840:LEU:HA	1:A:843:LEU:HD12	1.96	0.47
1:A:972:TYR:O	1:A:978:LEU:N	2.48	0.47
2:B:326:LEU:HD23	2:B:338:HIS:HA	1.96	0.47
1:A:571:SER:HA	1:A:574:GLU:HB3	1.97	0.47
1:A:543:TYR:HB3	1:A:579:TYR:HD1	1.80	0.47
1:A:950:VAL:HG12	1:A:986:PRO:HB2	1.97	0.47
1:A:992:HIS:CD2	1:A:1029:ASN:HD21	2.33	0.47
1:A:1333:CYS:HB3	1:A:1605:PRO:HB2	1.97	0.47
1:A:354:LYS:HB2	2:B:358:TYR:CE1	2.49	0.46
1:A:468:ASP:HB2	1:A:515:LEU:HG	1.97	0.46
1:A:475:SER:HB2	1:A:497:GLU:HB3	1.97	0.46
1:A:850:HIS:HD2	1:A:851:GLN:HG3	1.80	0.46
1:A:497:GLU:HG2	1:A:499:ARG:H	1.79	0.46
1:A:821:ARG:HH22	1:A:992:HIS:HE1	1.63	0.46

Continued on next page...

Continued from previous page...

Atom-1	Atom-2	Interatomic distance (Å)	Clash overlap (Å)
1:A:444:GLY:HA2	1:A:531:CYS:HB3	1.96	0.46
1:A:543:TYR:HA	1:A:546:TYR:HB3	1.97	0.46
1:A:1329:THR:HG22	1:A:1601:LYS:HZ3	1.79	0.46
1:A:98:PHE:HA	1:A:173:VAL:O	2.16	0.46
1:A:373:VAL:HG23	1:A:466:LYS:HE2	1.97	0.46
2:B:325:CYS:SG	2:B:326:LEU:N	2.89	0.46
1:A:154:VAL:HA	1:A:157:ASN:HD22	1.81	0.46
1:A:969:ALA:O	1:A:973:LYS:HB2	2.16	0.46
1:A:973:LYS:HD2	1:A:977:ASN:HA	1.98	0.46
1:A:451:ARG:HD3	1:A:493:GLN:HG3	1.98	0.45
1:A:949:ASP:HB3	1:A:989:ASP:HB3	1.98	0.45
1:A:931:VAL:HA	1:A:945:PHE:O	2.16	0.45
1:A:1024:TRP:HE1	3:C:71:A:HO2'	1.63	0.45
1:A:1704:LEU:O	1:A:1707:LEU:HB3	2.16	0.45
1:A:299:SER:OG	1:A:344:PHE:O	2.31	0.45
1:A:1599:ARG:HD2	1:A:1602:ALA:HB3	1.99	0.45
3:C:55:U:H2'	3:C:56:A:C8	2.52	0.45
1:A:504:VAL:HA	1:A:507:LYS:HB2	1.99	0.45
1:A:771:TYR:HA	1:A:831:LEU:HA	1.98	0.45
1:A:1294:PRO:O	1:A:1298:LEU:N	2.44	0.45
1:A:81:LEU:HD22	1:A:96:THR:HG21	1.99	0.45
1:A:128:GLU:H	1:A:129:VAL:HA	1.82	0.45
1:A:527:ASP:OD1	1:A:527:ASP:N	2.48	0.45
1:A:1716:ILE:O	1:A:1720:LEU:N	2.49	0.45
1:A:670:PRO:O	1:A:672:ASN:N	2.49	0.45
1:A:700:GLU:O	1:A:704:LYS:CB	2.65	0.45
1:A:988:LEU:O	1:A:1033:LEU:N	2.39	0.45
1:A:1294:PRO:HA	1:A:1297:ILE:HB	1.99	0.45
1:A:1329:THR:O	1:A:1333:CYS:HB2	2.16	0.45
1:A:1783:GLN:HA	1:A:1784:GLY:HA3	1.72	0.45
1:A:156:LEU:HD23	1:A:185:PRO:HG3	1.98	0.44
1:A:329:LEU:HD12	1:A:332:TYR:HB2	1.98	0.44
1:A:346:LEU:HB2	2:B:336:VAL:HG22	2.00	0.44
1:A:443:CYS:HB3	1:A:531:CYS:HA	2.00	0.44
1:A:1715:LEU:HD13	1:A:1831:TRP:HB2	1.98	0.44
1:A:321:VAL:HA	1:A:324:MET:HB2	1.99	0.44
1:A:1784:GLY:N	1:A:1803:GLU:OE2	2.49	0.44
1:A:246:TYR:H	1:A:554:ARG:HH21	1.65	0.44
1:A:504:VAL:HA	1:A:507:LYS:HD3	1.98	0.44
1:A:1060:ARG:HA	1:A:1063:CYS:HB3	1.99	0.44
1:A:1558:SER:O	1:A:1558:SER:OG	2.32	0.44

Continued on next page...

Continued from previous page...

Atom-1	Atom-2	Interatomic distance (Å)	Clash overlap (Å)
1:A:1879:ARG:HG3	1:A:1900:ALA:HB1	1.98	0.44
2:B:322:LEU:HD13	2:B:342:THR:HA	1.98	0.44
1:A:259:PRO:HA	1:A:260:PHE:HA	1.61	0.44
1:A:1008:LYS:HA	1:A:1013:PRO:HD2	1.99	0.44
3:C:58:A:H2'	3:C:59:A:C8	2.53	0.44
1:A:343:LYS:HA	1:A:346:LEU:HD12	1.99	0.44
1:A:1581:LEU:HA	1:A:1584:CYS:HB3	1.99	0.44
3:C:55:U:H2'	3:C:56:A:H8	1.82	0.44
1:A:768:CYS:HB2	1:A:805:LEU:HG	1.99	0.44
2:B:314:ILE:HB	2:B:324:GLN:HB2	1.99	0.44
1:A:299:SER:HA	1:A:302:ILE:HD12	2.00	0.44
1:A:654:ARG:H	1:A:667:LEU:HA	1.82	0.44
1:A:1614:GLN:OE1	1:A:1698:THR:OG1	2.31	0.44
1:A:952:THR:HG22	1:A:986:PRO:HB3	2.00	0.44
1:A:1352:SER:OG	1:A:1353:ASN:N	2.50	0.44
1:A:819:TYR:H	1:A:999:LEU:HB3	1.83	0.43
1:A:844:GLU:HB3	1:A:848:ARG:NH1	2.33	0.43
3:C:7:A:H2'	3:C:8:G:C8	2.53	0.43
1:A:461:ILE:HA	1:A:464:ALA:HB3	2.00	0.43
1:A:655:THR:HA	1:A:665:SER:HA	2.00	0.43
1:A:172:LEU:HD21	1:A:202:ILE:HG23	2.00	0.43
1:A:194:GLU:HA	1:A:195:ASN:HA	1.81	0.43
1:A:359:CYS:HA	1:A:363:PHE:HB2	1.99	0.43
1:A:777:LEU:H	1:A:795:PRO:HD2	1.84	0.43
1:A:1872:ARG:HB3	1:A:1878:VAL:HA	1.99	0.43
1:A:844:GLU:HB3	1:A:848:ARG:HH12	1.83	0.43
1:A:1712:LEU:HD23	1:A:1712:LEU:HA	1.86	0.43
2:B:314:ILE:HG22	2:B:316:GLU:H	1.83	0.43
1:A:263:ARG:HG3	1:A:363:PHE:HD1	1.83	0.43
1:A:821:ARG:HH12	1:A:992:HIS:CE1	2.37	0.43
1:A:94:LYS:HE3	1:A:94:LYS:HB3	1.85	0.43
1:A:283:ASP:HA	2:B:319:LEU:HG	2.01	0.43
1:A:577:LYS:O	1:A:580:LYS:HB3	2.19	0.43
1:A:636:ARG:HH22	1:A:702:LEU:HD22	1.83	0.43
1:A:656:ARG:N	1:A:664:TYR:O	2.48	0.43
1:A:145:HIS:HB2	1:A:148:LEU:HD21	2.01	0.43
1:A:1600:GLU:HA	1:A:1601:LYS:HA	1.65	0.43
1:A:105:GLN:O	1:A:109:GLN:HG2	2.19	0.43
1:A:932:ILE:HG22	1:A:1040:ILE:HG12	2.00	0.43
1:A:961:PRO:HA	3:C:73:C:C4	2.53	0.43
1:A:1071:ARG:HH21	1:A:1293:ASN:HB2	1.84	0.43

Continued on next page...

Continued from previous page...

Atom-1	Atom-2	Interatomic distance (Å)	Clash overlap (Å)
1:A:1708:GLY:HA3	1:A:1813:GLU:O	2.19	0.43
2:B:305:GLN:NE2	2:B:332:GLN:OE1	2.52	0.43
1:A:66:THR:HA	1:A:70:LYS:HG3	2.00	0.43
1:A:114:ARG:HA	1:A:117:SER:HB2	2.01	0.43
1:A:1358:ARG:HG2	1:A:1362:LYS:NZ	2.33	0.43
1:A:255:VAL:HB	1:A:563:LEU:HD13	2.01	0.42
1:A:848:ARG:O	1:A:852:TYR:HB3	2.18	0.42
1:A:1365:LEU:HD23	1:A:1368:ARG:HD2	2.01	0.42
1:A:84:GLN:HG3	1:A:1661:HIS:CG	2.54	0.42
1:A:585:ILE:HA	1:A:589:LYS:HD3	2.01	0.42
1:A:920:PHE:HB3	1:A:982:ASN:HB2	2.02	0.42
1:A:1339:HIS:O	1:A:1343:LEU:N	2.33	0.42
2:B:297:VAL:HB	2:B:356:LEU:HD13	2.00	0.42
1:A:72:PHE:O	1:A:76:LEU:HG	2.19	0.42
1:A:635:ASN:HA	1:A:638:CYS:HB3	2.01	0.42
1:A:1353:ASN:ND2	1:A:1555:ALA:O	2.52	0.42
1:A:1662:LEU:HD13	1:A:1684:LEU:HD21	2.00	0.42
1:A:1716:ILE:O	1:A:1719:HIS:HB3	2.20	0.42
3:C:62:U:H2'	3:C:63:A:C8	2.55	0.42
1:A:142:PHE:HD2	1:A:143:THR:HG23	1.84	0.42
1:A:566:THR:HG23	1:A:573:GLU:HB2	2.00	0.42
1:A:1692:TYR:CZ	1:A:1759:LYS:HD2	2.54	0.42
1:A:335:HIS:O	1:A:337:GLN:NE2	2.52	0.42
1:A:347:PHE:HB2	2:B:337:CYS:HA	2.02	0.42
1:A:325:MET:O	1:A:329:LEU:HB2	2.20	0.42
1:A:476:SER:HA	1:A:496:ALA:HA	2.02	0.42
1:A:502:GLU:HA	1:A:505:LEU:HB2	2.02	0.42
1:A:657:GLU:HA	1:A:663:PHE:HA	2.02	0.42
1:A:1611:ASN:HB2	1:A:1679:ASN:HD21	1.84	0.42
3:C:68:C:H2'	3:C:69:U:C6	2.55	0.42
1:A:652:LYS:HE2	1:A:654:ARG:HG2	2.01	0.42
1:A:1692:TYR:O	1:A:1696:THR:N	2.53	0.42
1:A:720:VAL:O	1:A:724:GLU:N	2.40	0.42
1:A:1612:SER:HB2	1:A:1615:LYS:HE2	2.02	0.42
1:A:1725:ARG:HH12	1:A:1847:ALA:HA	1.83	0.42
1:A:57:ASP:HA	1:A:201:ARG:HH11	1.85	0.41
1:A:93:GLY:O	1:A:95:ARG:HG2	2.20	0.41
1:A:209:ILE:HB	1:A:212:GLY:H	1.85	0.41
1:A:1591:LEU:HD11	1:A:1594:ILE:HB	2.01	0.41
1:A:1710:ALA:O	1:A:1714:TYR:N	2.51	0.41
3:C:58:A:H2'	3:C:59:A:H8	1.85	0.41

Continued on next page...

Continued from previous page...

Atom-1	Atom-2	Interatomic distance (Å)	Clash overlap (Å)
1:A:1007:GLN:HG3	1:A:1012:LEU:HG	2.01	0.41
1:A:174:PHE:HB2	1:A:204:GLY:HA2	2.01	0.41
1:A:471:LEU:HA	1:A:471:LEU:HD12	1.86	0.41
1:A:1054:LEU:HA	1:A:1057:ILE:HD12	2.02	0.41
1:A:1330:TYR:HA	1:A:1601:LYS:HZ1	1.84	0.41
1:A:329:LEU:HD11	1:A:345:LEU:HD22	2.01	0.41
1:A:371:LYS:N	1:A:465:GLY:HA3	2.36	0.41
1:A:478:PHE:CD2	1:A:495:GLU:HG3	2.55	0.41
1:A:1044:PRO:HD2	1:A:1047:LEU:HD23	2.01	0.41
1:A:992:HIS:N	1:A:1029:ASN:OD1	2.52	0.41
1:A:993:THR:HB	1:A:1048:TRP:NE1	2.36	0.41
1:A:376:LYS:HB3	1:A:442:LEU:HD23	2.03	0.41
1:A:377:VAL:HG12	1:A:378:ILE:HG12	2.02	0.41
1:A:820:THR:OG1	1:A:823:GLY:N	2.52	0.41
1:A:1062:HIS:HA	1:A:1065:LEU:HB2	2.03	0.41
1:A:74:ALA:HA	1:A:77:LEU:HD12	2.02	0.41
1:A:658:LEU:HB2	1:A:664:TYR:HE2	1.86	0.41
1:A:1318:LEU:HD21	1:A:1718:LYS:HA	2.02	0.41
1:A:1365:LEU:O	1:A:1369:MET:N	2.46	0.41
1:A:1744:ILE:O	1:A:1747:SER:OG	2.30	0.41
2:B:317:LEU:HB3	2:B:321:GLY:HA2	2.02	0.41
1:A:324:MET:SD	1:A:459:ARG:NH2	2.94	0.41
1:A:576:LEU:O	1:A:580:LYS:N	2.51	0.41
3:C:57:C:H2'	3:C:58:A:C8	2.56	0.41
1:A:247:THR:H	1:A:554:ARG:NH2	2.19	0.40
1:A:281:ILE:HG12	1:A:296:THR:HB	2.03	0.40
1:A:721:LYS:O	1:A:725:GLU:N	2.54	0.40
1:A:795:PRO:HB3	1:A:1050:LYS:HE3	2.03	0.40
1:A:45:ARG:HD2	1:A:47:TYR:HE1	1.87	0.40
1:A:96:THR:HG22	1:A:171:LEU:HB3	2.03	0.40
1:A:488:GLN:OE1	1:A:490:ARG:NE	2.55	0.40
1:A:1855:ARG:H	1:A:1898:ARG:NH2	2.19	0.40
1:A:256:ASP:HB2	1:A:567:ASP:HB2	2.02	0.40
1:A:1657:LYS:HA	1:A:1660:ASN:HD22	1.86	0.40
1:A:223:ILE:O	1:A:227:GLU:HG2	2.22	0.40
1:A:376:LYS:HA	1:A:380:LEU:HD22	2.04	0.40
1:A:884:VAL:O	1:A:888:SER:CA	2.69	0.40
1:A:134:THR:H	1:A:135:LYS:HB2	1.87	0.40
1:A:141:GLU:HA	1:A:144:LYS:HB2	2.04	0.40
1:A:995:SER:OG	1:A:996:ARG:N	2.55	0.40
1:A:1658:THR:HA	1:A:1661:HIS:CD2	2.54	0.40

Continued on next page...

Continued from previous page...

Atom-1	Atom-2	Interatomic distance (Å)	Clash overlap (Å)
1:A:1875:ASP:N	1:A:1875:ASP:OD1	2.52	0.40

There are no symmetry-related clashes.

5.3 Torsion angles [i](#)

5.3.1 Protein backbone [i](#)

In the following table, the Percentiles column shows the percent Ramachandran outliers of the chain as a percentile score with respect to all PDB entries followed by that with respect to all EM entries.

The Analysed column shows the number of residues for which the backbone conformation was analysed, and the total number of residues.

Mol	Chain	Analysed	Favoured	Allowed	Outliers	Percentiles	
1	A	1296/1922 (67%)	1074 (83%)	213 (16%)	9 (1%)	22	62
2	B	73/366 (20%)	65 (89%)	8 (11%)	0	100	100
All	All	1369/2288 (60%)	1139 (83%)	221 (16%)	9 (1%)	26	62

All (9) Ramachandran outliers are listed below:

Mol	Chain	Res	Type
1	A	1293	ASN
1	A	166	LEU
1	A	95	ARG
1	A	479	ILE
1	A	1593	VAL
1	A	139	ASN
1	A	1294	PRO
1	A	1592	PRO
1	A	1605	PRO

5.3.2 Protein sidechains [i](#)

In the following table, the Percentiles column shows the percent sidechain outliers of the chain as a percentile score with respect to all PDB entries followed by that with respect to all EM entries.

The Analysed column shows the number of residues for which the sidechain conformation was

analysed, and the total number of residues.

Mol	Chain	Analysed	Rotameric	Outliers	Percentiles	
1	A	1182/1730 (68%)	1171 (99%)	11 (1%)	78	88
2	B	60/301 (20%)	60 (100%)	0	100	100
All	All	1242/2031 (61%)	1231 (99%)	11 (1%)	79	88

All (11) residues with a non-rotameric sidechain are listed below:

Mol	Chain	Res	Type
1	A	91	ARG
1	A	187	ARG
1	A	376	LYS
1	A	451	ARG
1	A	490	ARG
1	A	703	HIS
1	A	996	ARG
1	A	1318	LEU
1	A	1554	ILE
1	A	1591	LEU
1	A	1731	VAL

Sometimes sidechains can be flipped to improve hydrogen bonding and reduce clashes. All (13) such sidechains are listed below:

Mol	Chain	Res	Type
1	A	92	ASN
1	A	140	GLN
1	A	157	ASN
1	A	279	ASN
1	A	514	ASN
1	A	815	HIS
1	A	850	HIS
1	A	1028	GLN
1	A	1293	ASN
1	A	1339	HIS
1	A	1660	ASN
1	A	1693	HIS
2	B	305	GLN

5.3.3 RNA

Mol	Chain	Analysed	Backbone Outliers	Pucker Outliers
3	C	56/73 (76%)	11 (19%)	0

All (11) RNA backbone outliers are listed below:

Mol	Chain	Res	Type
3	C	7	A
3	C	10	A
3	C	19	A
3	C	27	G
3	C	28	G
3	C	45	G
3	C	49	U
3	C	69	U
3	C	71	A
3	C	72	C
3	C	73	C

There are no RNA pucker outliers to report.

5.4 Non-standard residues in protein, DNA, RNA chains [i](#)

There are no non-standard protein/DNA/RNA residues in this entry.

5.5 Carbohydrates [i](#)

There are no monosaccharides in this entry.

5.6 Ligand geometry [i](#)

There are no ligands in this entry.

5.7 Other polymers [i](#)

There are no such residues in this entry.

5.8 Polymer linkage issues [i](#)

There are no chain breaks in this entry.

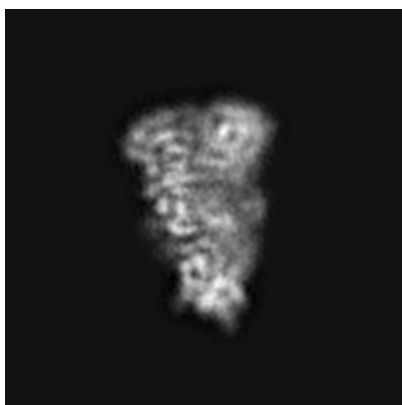
6 Map visualisation [i](#)

This section contains visualisations of the EMDB entry EMD-6905. These allow visual inspection of the internal detail of the map and identification of artifacts.

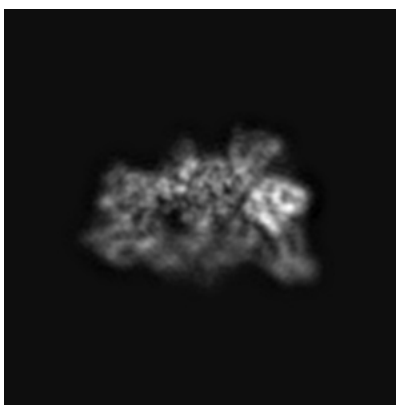
No raw map or half-maps were deposited for this entry and therefore no images, graphs, etc. pertaining to the raw map can be shown.

6.1 Orthogonal projections [i](#)

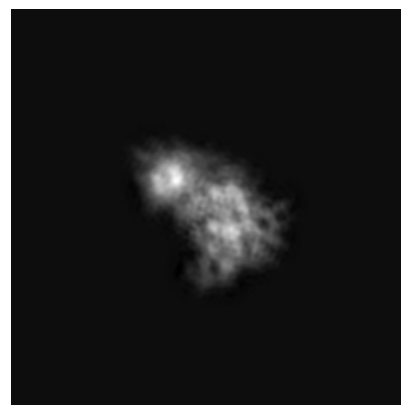
6.1.1 Primary map



X



Y



Z

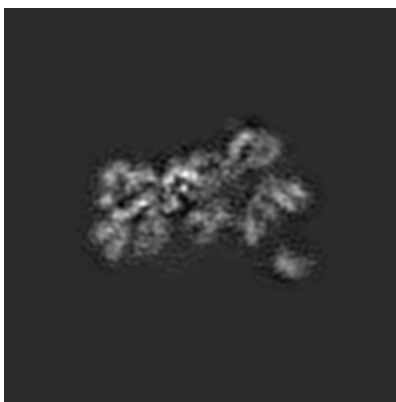
The images above show the map projected in three orthogonal directions.

6.2 Central slices [i](#)

6.2.1 Primary map



X Index: 90



Y Index: 90



Z Index: 90

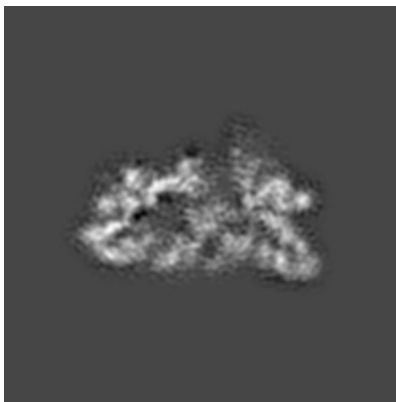
The images above show central slices of the map in three orthogonal directions.

6.3 Largest variance slices [i](#)

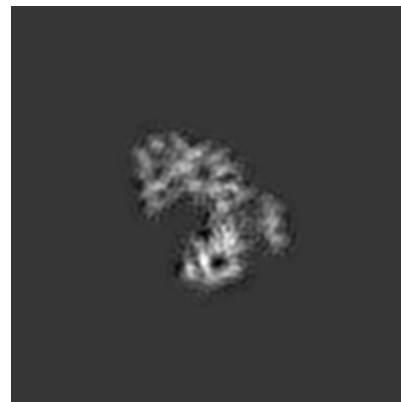
6.3.1 Primary map



X Index: 98



Y Index: 98

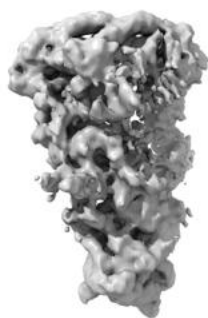


Z Index: 123

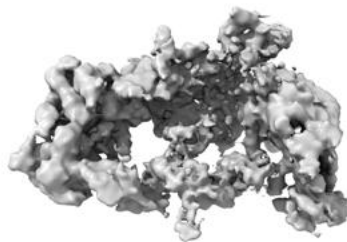
The images above show the largest variance slices of the map in three orthogonal directions.

6.4 Orthogonal surface views [i](#)

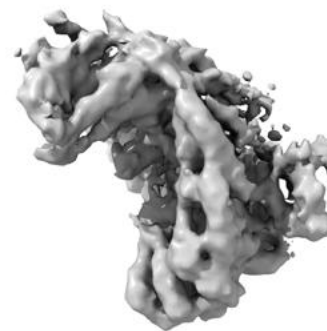
6.4.1 Primary map



X



Y



Z

The images above show the 3D surface view of the map at the recommended contour level 0.04. These images, in conjunction with the slice images, may facilitate assessment of whether an appropriate contour level has been provided.

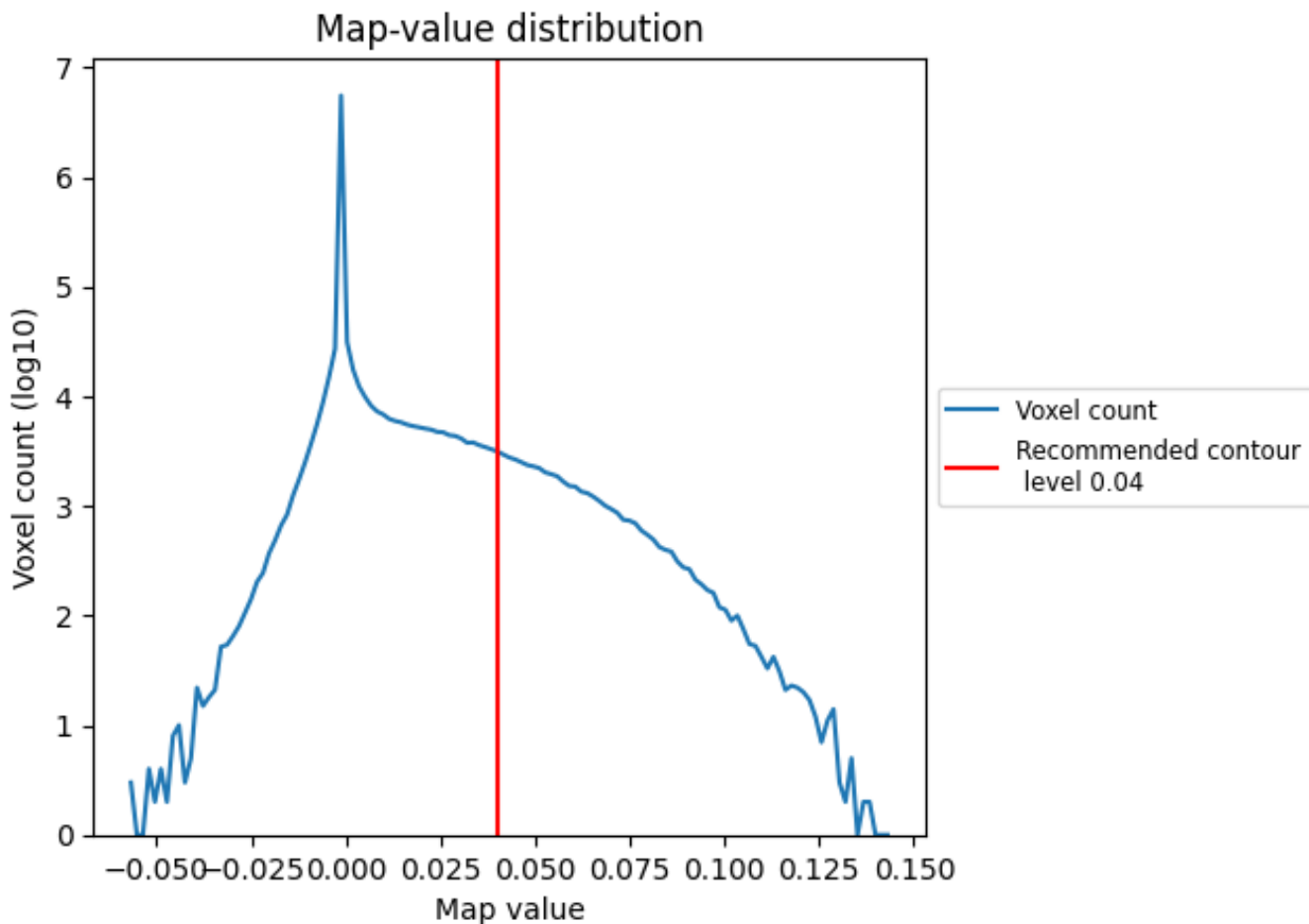
6.5 Mask visualisation

This section was not generated. No masks/segmentation were deposited.

7 Map analysis [i](#)

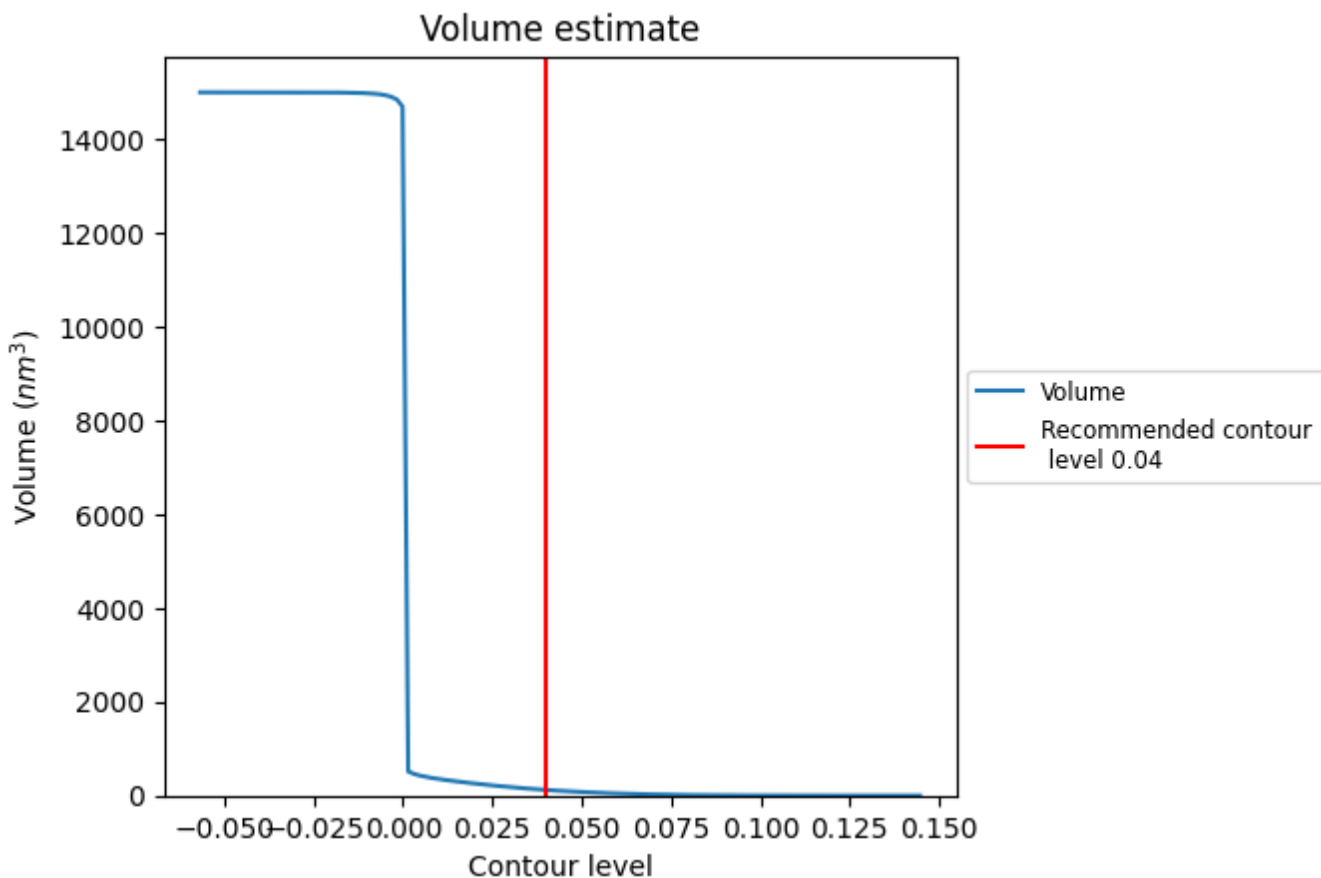
This section contains the results of statistical analysis of the map.

7.1 Map-value distribution [i](#)



The map-value distribution is plotted in 128 intervals along the x-axis. The y-axis is logarithmic. A spike in this graph at zero usually indicates that the volume has been masked.

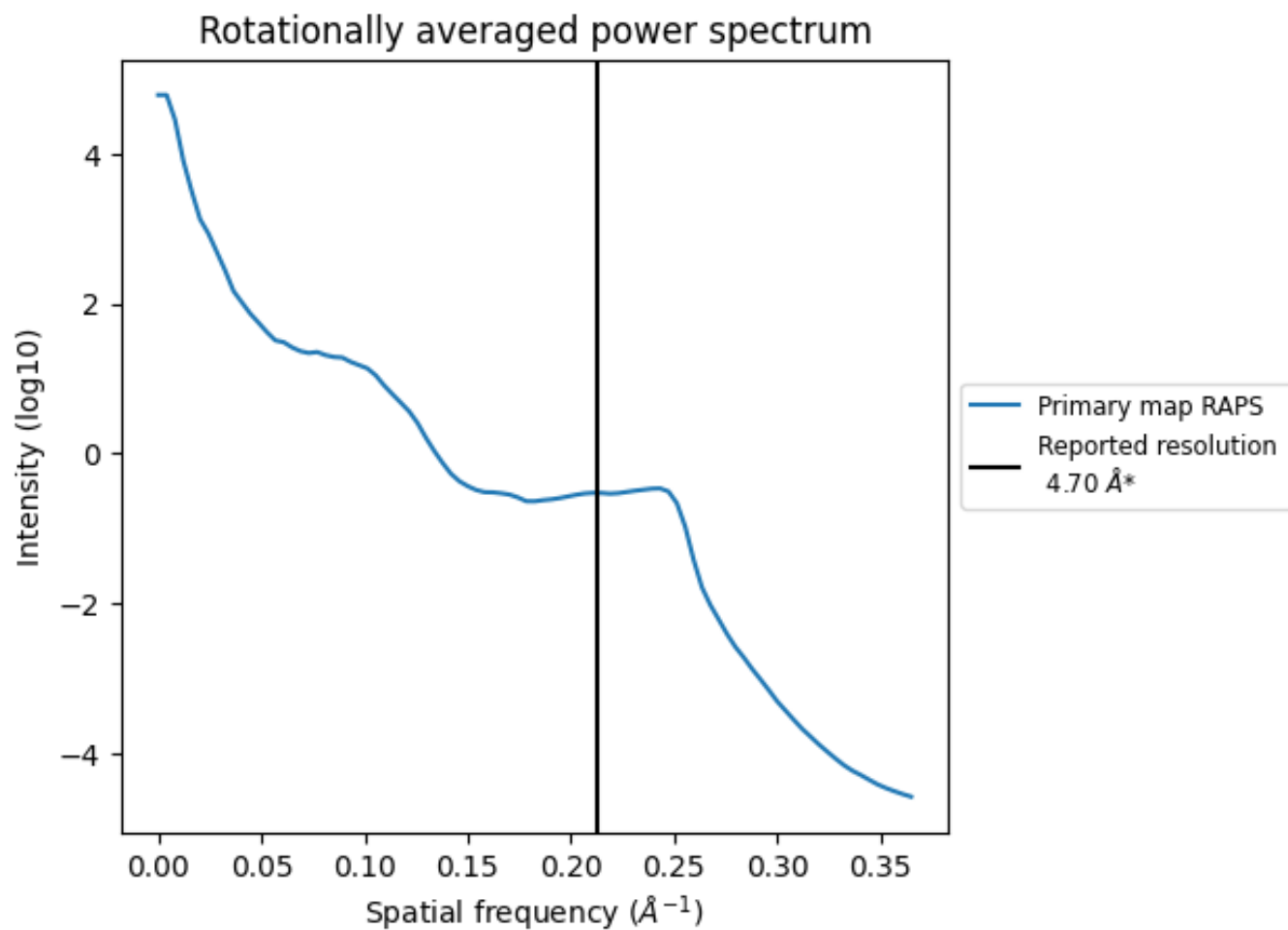
7.2 Volume estimate [\(i\)](#)



The volume at the recommended contour level is 120 nm^3 ; this corresponds to an approximate mass of 108 kDa.

The volume estimate graph shows how the enclosed volume varies with the contour level. The recommended contour level is shown as a vertical line and the intersection between the line and the curve gives the volume of the enclosed surface at the given level.

7.3 Rotationally averaged power spectrum [i](#)



*Reported resolution corresponds to spatial frequency of 0.213 Å⁻¹

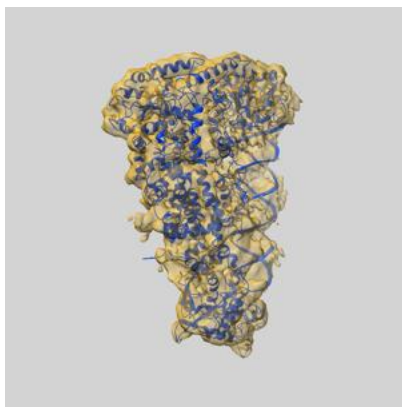
8 Fourier-Shell correlation

This section was not generated. No FSC curve or half-maps provided.

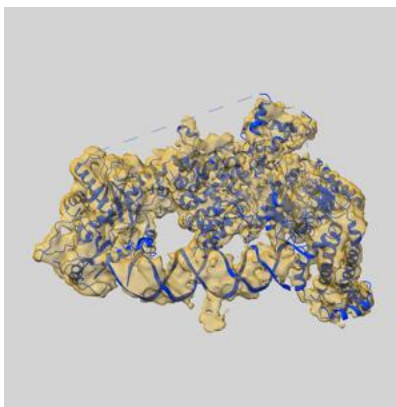
9 Map-model fit [i](#)

This section contains information regarding the fit between EMDB map EMD-6905 and PDB model 5ZAL. Per-residue inclusion information can be found in section 3 on page 4.

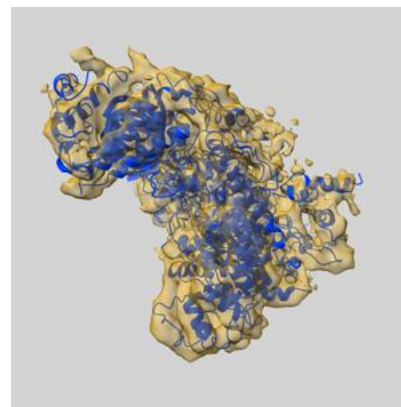
9.1 Map-model overlay [i](#)



X



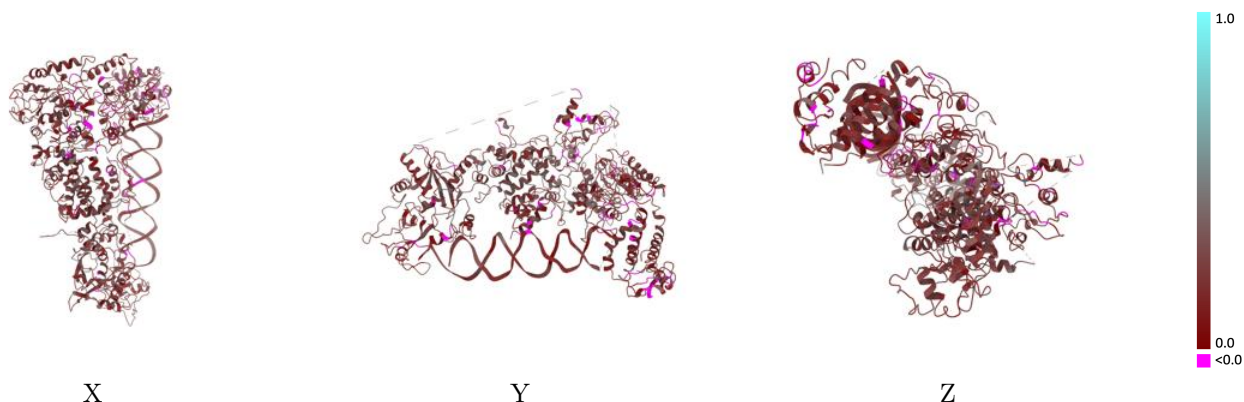
Y



Z

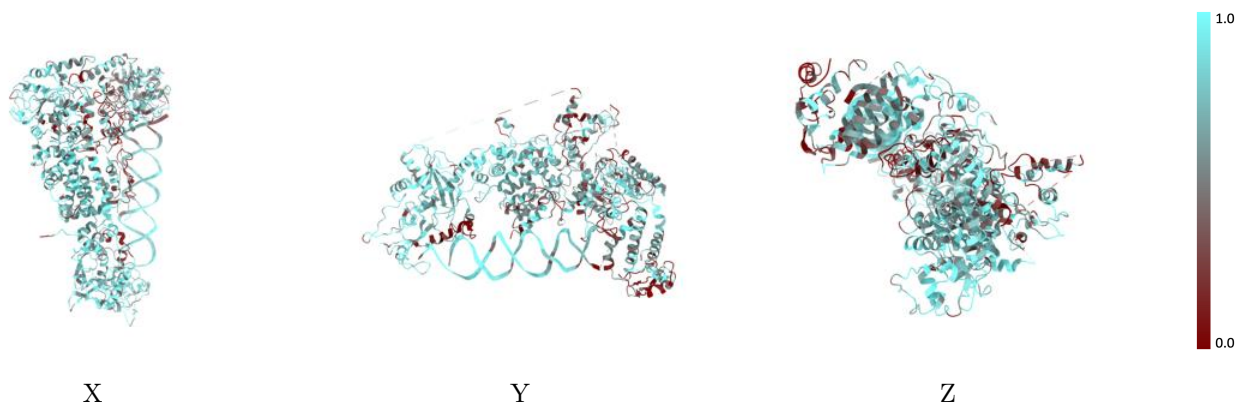
The images above show the 3D surface view of the map at the recommended contour level 0.04 at 50% transparency in yellow overlaid with a ribbon representation of the model coloured in blue. These images allow for the visual assessment of the quality of fit between the atomic model and the map.

9.2 Q-score mapped to coordinate model [\(i\)](#)



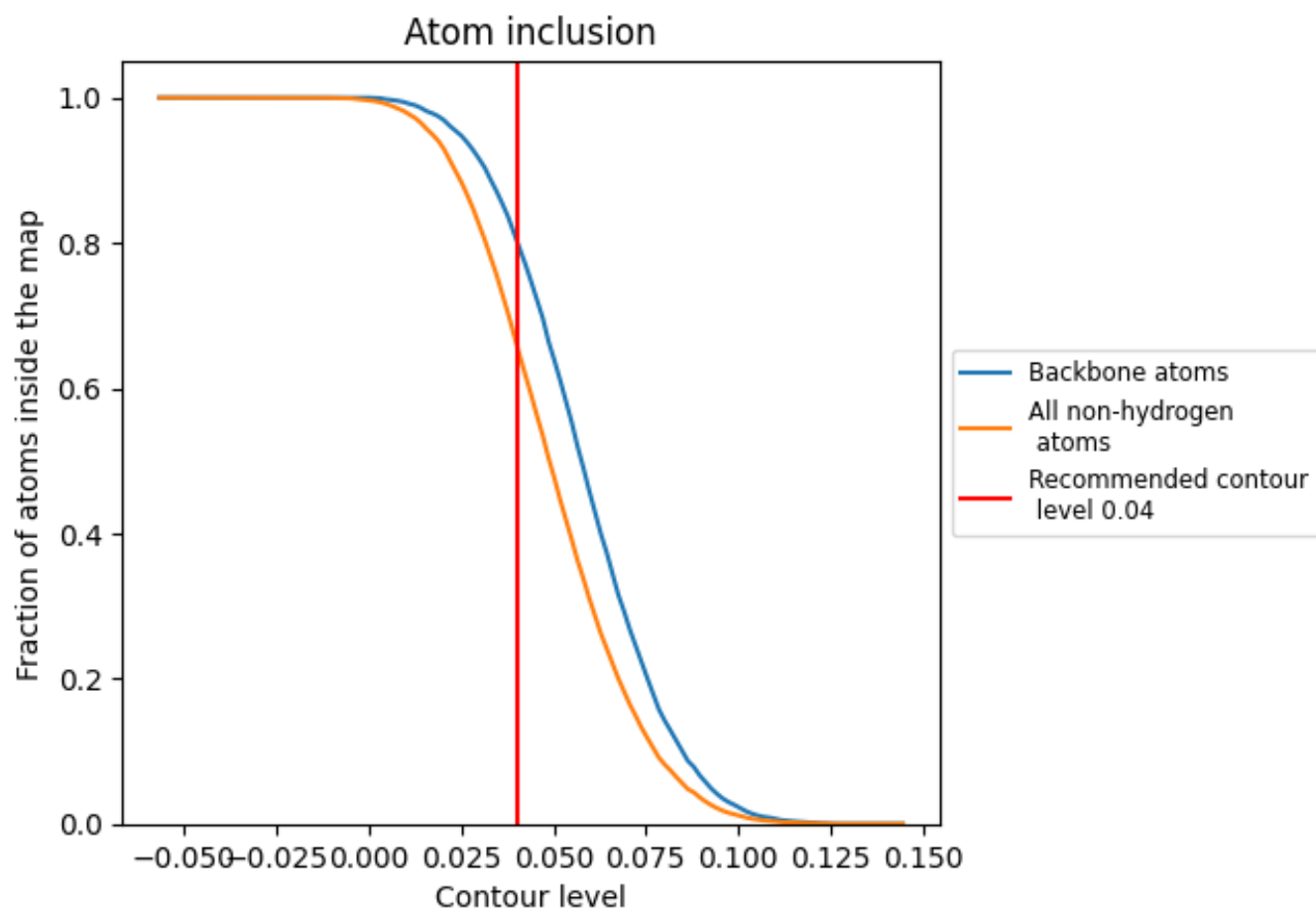
The images above show the model with each residue coloured according to its Q-score. This shows their resolvability in the map with higher Q-score values reflecting better resolvability. Please note: Q-score is calculating the resolvability of atoms, and thus high values are only expected at resolutions at which atoms can be resolved. Low Q-score values may therefore be expected for many entries.

9.3 Atom inclusion mapped to coordinate model [\(i\)](#)



The images above show the model with each residue coloured according to its atom inclusion. This shows to what extent they are inside the map at the recommended contour level (0.04).









9.4 Atom inclusion [i](#)



At the recommended contour level, 80% of all backbone atoms, 66% of all non-hydrogen atoms, are inside the map.

9.5 Map-model fit summary

The table lists the average atom inclusion at the recommended contour level (0.04) and Q-score for the entire model and for each chain.

Chain	Atom inclusion	Q-score
All	 0.6600	 0.2160
A	 0.6632	 0.2220
B	 0.3723	 0.1460
C	 0.7609	 0.2000

