



Full wwPDB X-ray Structure Validation Report ⓘ

Sep 26, 2023 – 12:10 PM EDT

PDB ID : 6C55
Title : Crystal structure of Staphylococcus aureus Ketol-acid Reductoisomerase with hydroxyoxamate inhibitor 3
Authors : Kandale, A.; Patel, K.M.; Zheng, S.; You, L.; Guddat, L.W.; Schenk, G.; Schmbri, M.; McGeary, R.P.
Deposited on : 2018-01-14
Resolution : 2.09 Å(reported)

This is a Full wwPDB X-ray Structure Validation Report for a publicly released PDB entry.

We welcome your comments at validation@mail.wwpdb.org

A user guide is available at

<https://www.wwpdb.org/validation/2017/XrayValidationReportHelp>

with specific help available everywhere you see the ⓘ symbol.

The types of validation reports are described at

<http://www.wwpdb.org/validation/2017/FAQs#types>.

The following versions of software and data (see [references ⓘ](#)) were used in the production of this report:

MolProbity : 4.02b-467
Mogul : 1.8.5 (274361), CSD as541be (2020)
Xtrriage (Phenix) : 1.13
EDS : 2.35.1
buster-report : 1.1.7 (2018)
Percentile statistics : 20191225.v01 (using entries in the PDB archive December 25th 2019)
Refmac : 5.8.0158
CCP4 : 7.0.044 (Gargrove)
Ideal geometry (proteins) : Engh & Huber (2001)
Ideal geometry (DNA, RNA) : Parkinson et al. (1996)
Validation Pipeline (wwPDB-VP) : 2.35.1

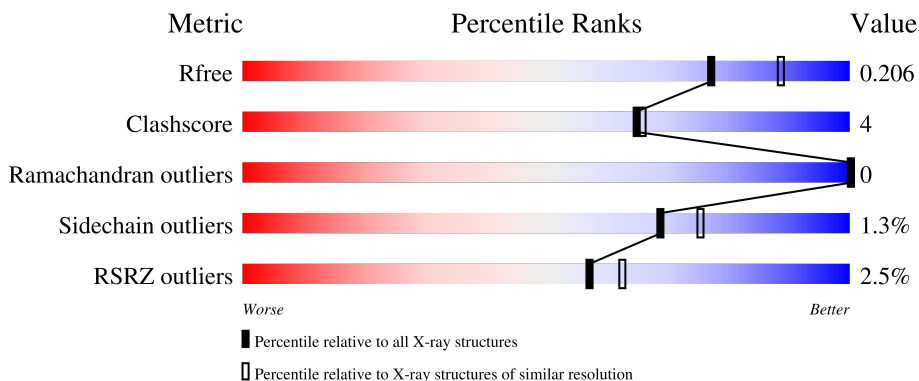
1 Overall quality at a glance

The following experimental techniques were used to determine the structure:

X-RAY DIFFRACTION

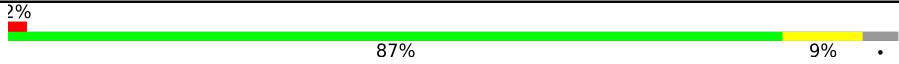
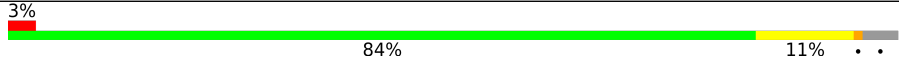
The reported resolution of this entry is 2.09 Å.

Percentile scores (ranging between 0-100) for global validation metrics of the entry are shown in the following graphic. The table shows the number of entries on which the scores are based.



Metric	Whole archive (#Entries)	Similar resolution (#Entries, resolution range(Å))
R_{free}	130704	5197 (2.10-2.10)
Clashscore	141614	5710 (2.10-2.10)
Ramachandran outliers	138981	5647 (2.10-2.10)
Sidechain outliers	138945	5648 (2.10-2.10)
RSRZ outliers	127900	5083 (2.10-2.10)

The table below summarises the geometric issues observed across the polymeric chains and their fit to the electron density. The red, orange, yellow and green segments of the lower bar indicate the fraction of residues that contain outliers for ≥ 3 , 2, 1 and 0 types of geometric quality criteria respectively. A grey segment represents the fraction of residues that are not modelled. The numeric value for each fraction is indicated below the corresponding segment, with a dot representing fractions $\leq 5\%$. The upper red bar (where present) indicates the fraction of residues that have poor fit to the electron density. The numeric value is given above the bar.

Mol	Chain	Length	Quality of chain
1	A	340	 2% 87% 9% .
1	B	340	 3% 84% 11% . .

2 Entry composition

There are 6 unique types of molecules in this entry. The entry contains 5590 atoms, of which 0 are hydrogens and 0 are deuteriums.

In the tables below, the ZeroOcc column contains the number of atoms modelled with zero occupancy, the AltConf column contains the number of residues with at least one atom in alternate conformation and the Trace column contains the number of residues modelled with at most 2 atoms.

- Molecule 1 is a protein called Ketol-acid reductoisomerase (NADP(+)).

Mol	Chain	Residues	Atoms					ZeroOcc	AltConf	Trace
			Total	C	N	O	S			
1	A	326	2574	1631	436	499	8	0	4	0
1	B	326	2551	1619	432	492	8	0	1	0

There are 12 discrepancies between the modelled and reference sequences:

Chain	Residue	Modelled	Actual	Comment	Reference
A	335	HIS	-	expression tag	UNP Q2YUF3
A	336	HIS	-	expression tag	UNP Q2YUF3
A	337	HIS	-	expression tag	UNP Q2YUF3
A	338	HIS	-	expression tag	UNP Q2YUF3
A	339	HIS	-	expression tag	UNP Q2YUF3
A	340	HIS	-	expression tag	UNP Q2YUF3
B	335	HIS	-	expression tag	UNP Q2YUF3
B	336	HIS	-	expression tag	UNP Q2YUF3
B	337	HIS	-	expression tag	UNP Q2YUF3
B	338	HIS	-	expression tag	UNP Q2YUF3
B	339	HIS	-	expression tag	UNP Q2YUF3
B	340	HIS	-	expression tag	UNP Q2YUF3

- Molecule 2 is MAGNESIUM ION (three-letter code: MG) (formula: Mg).

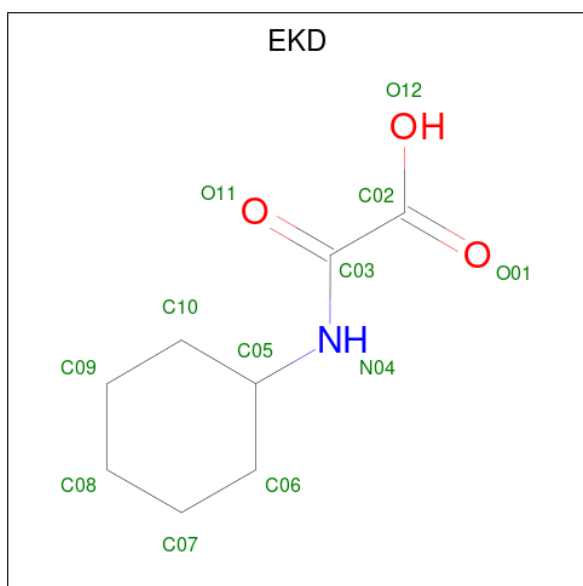
Mol	Chain	Residues	Atoms		ZeroOcc	AltConf
2	A	3	Total	Mg	0	0
			3	3		
2	B	1	Total	Mg	0	0
			1	1		

- Molecule 3 is NADP NICOTINAMIDE-ADENINE-DINUCLEOTIDE PHOSPHATE (three-letter code: NAP) (formula: C₂₁H₂₈N₇O₁₇P₃).



Mol	Chain	Residues	Atoms					ZeroOcc	AltConf
			Total	C	N	O	P		
3	A	1	96	42	14	34	6	0	1
3	B	1	48	21	7	17	3	0	0

- Molecule 4 is (cyclohexylamino)(oxo)acetic acid (three-letter code: EKD) (formula: $C_8H_{13}NO_3$).



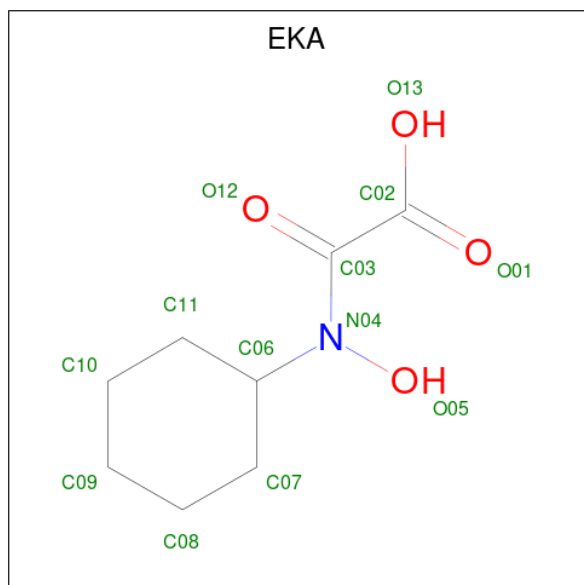
Mol	Chain	Residues	Atoms				ZeroOcc	AltConf
			Total	C	N	O		
4	A	1	12	8	1	3	0	1

Continued on next page...

Continued from previous page...

Mol	Chain	Residues	Atoms				ZeroOcc	AltConf
			Total	C	N	O		
4	A	1	12	8	1	3	0	0

- Molecule 5 is [cyclohexyl(hydroxy)amino](oxo)acetic acid (three-letter code: EKA) (formula: $C_8H_{13}NO_4$).



Mol	Chain	Residues	Atoms				ZeroOcc	AltConf
			Total	C	N	O		
5	A	1	13	8	1	4	0	1

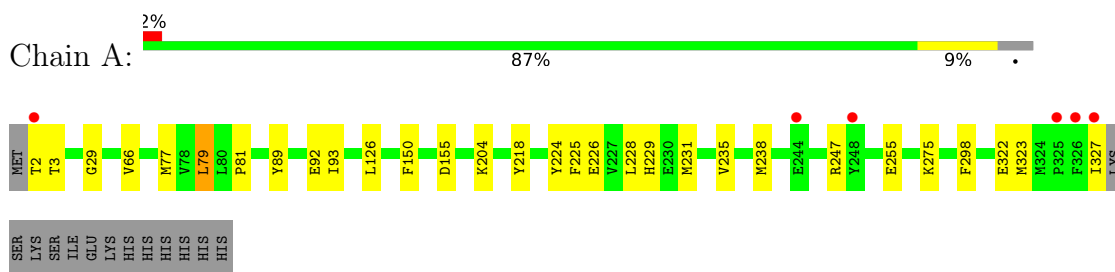
- Molecule 6 is water.

Mol	Chain	Residues	Atoms		ZeroOcc	AltConf
			Total	O		
6	A	174	174	174	0	0
6	B	106	106	106	0	0

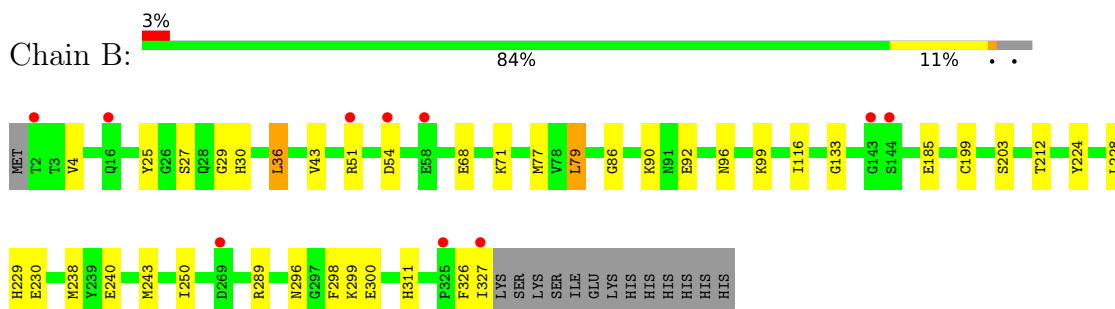
3 Residue-property plots [i](#)

These plots are drawn for all protein, RNA, DNA and oligosaccharide chains in the entry. The first graphic for a chain summarises the proportions of the various outlier classes displayed in the second graphic. The second graphic shows the sequence view annotated by issues in geometry and electron density. Residues are color-coded according to the number of geometric quality criteria for which they contain at least one outlier: green = 0, yellow = 1, orange = 2 and red = 3 or more. A red dot above a residue indicates a poor fit to the electron density ($RSRZ > 2$). Stretches of 2 or more consecutive residues without any outlier are shown as a green connector. Residues present in the sample, but not in the model, are shown in grey.

- Molecule 1: Ketol-acid reductoisomerase (NADP(+))



- Molecule 1: Ketol-acid reductoisomerase (NADP(+))



4 Data and refinement statistics

Property	Value	Source
Space group	P 1 21 1	Depositor
Cell constants a, b, c, α , β , γ	65.72Å 79.03Å 69.64Å 90.00° 101.39° 90.00°	Depositor
Resolution (Å)	39.52 – 2.09 39.52 – 2.09	Depositor EDS
% Data completeness (in resolution range)	98.9 (39.52-2.09) 98.9 (39.52-2.09)	Depositor EDS
R_{merge}	0.08	Depositor
R_{sym}	(Not available)	Depositor
$\langle I/\sigma(I) \rangle$ ¹	1.03 (at 2.08Å)	Xtrriage
Refinement program	PHENIX (1.11.1_2575: ???)	Depositor
R, R_{free}	0.163 , 0.206 0.163 , 0.206	Depositor DCC
R_{free} test set	1999 reflections (4.88%)	wwPDB-VP
Wilson B-factor (Å ²)	29.4	Xtrriage
Anisotropy	0.157	Xtrriage
Bulk solvent k_{sol} (e/Å ³), B_{sol} (Å ²)	0.37 , 52.2	EDS
L-test for twinning ²	$\langle L \rangle = 0.50$, $\langle L^2 \rangle = 0.34$	Xtrriage
Estimated twinning fraction	No twinning to report.	Xtrriage
F_o, F_c correlation	0.96	EDS
Total number of atoms	5590	wwPDB-VP
Average B, all atoms (Å ²)	32.0	wwPDB-VP

Xtrriage's analysis on translational NCS is as follows: *The largest off-origin peak in the Patterson function is 5.92% of the height of the origin peak. No significant pseudotranslation is detected.*

¹Intensities estimated from amplitudes.

²Theoretical values of $\langle |L| \rangle$, $\langle L^2 \rangle$ for acentric reflections are 0.5, 0.333 respectively for untwinned datasets, and 0.375, 0.2 for perfectly twinned datasets.

5 Model quality [i](#)

5.1 Standard geometry [i](#)

Bond lengths and bond angles in the following residue types are not validated in this section: EKD, EKA, MG, NAP

The Z score for a bond length (or angle) is the number of standard deviations the observed value is removed from the expected value. A bond length (or angle) with $|Z| > 5$ is considered an outlier worth inspection. RMSZ is the root-mean-square of all Z scores of the bond lengths (or angles).

Mol	Chain	Bond lengths		Bond angles	
		RMSZ	# Z >5	RMSZ	# Z >5
1	A	0.42	0/2626	0.52	0/3548
1	B	0.39	0/2603	0.51	0/3517
All	All	0.41	0/5229	0.52	0/7065

There are no bond length outliers.

There are no bond angle outliers.

There are no chirality outliers.

There are no planarity outliers.

5.2 Too-close contacts [i](#)

In the following table, the Non-H and H(model) columns list the number of non-hydrogen atoms and hydrogen atoms in the chain respectively. The H(added) column lists the number of hydrogen atoms added and optimized by MolProbity. The Clashes column lists the number of clashes within the asymmetric unit, whereas Symm-Clashes lists symmetry-related clashes.

Mol	Chain	Non-H	H(model)	H(added)	Clashes	Symm-Clashes
1	A	2574	0	2502	20	0
1	B	2551	0	2488	26	0
2	A	3	0	0	0	0
2	B	1	0	0	0	0
3	A	96	0	50	1	0
3	B	48	0	25	0	0
4	A	24	0	0	1	0
5	A	13	0	0	1	0
6	A	174	0	0	5	0
6	B	106	0	0	3	0
All	All	5590	0	5065	43	0

The all-atom clashscore is defined as the number of clashes found per 1000 atoms (including hydrogen atoms). The all-atom clashscore for this structure is 4.

All (43) close contacts within the same asymmetric unit are listed below, sorted by their clash magnitude.

Atom-1	Atom-2	Interatomic distance (Å)	Clash overlap (Å)
1:A:66:VAL:HB	1:A:92:GLU:HG2	1.63	0.80
1:A:235:VAL:HA	1:A:238:MET:HE2	1.66	0.78
5:A:407[B]:EKA:O05	1:B:230:GLU:OE2	2.08	0.71
1:A:204:LYS:NZ	6:A:504:HOH:O	2.24	0.69
1:B:116:ILE:HA	6:B:596:HOH:O	1.95	0.66
1:B:86:GLY:O	1:B:90:LYS:NZ	2.29	0.63
1:A:2:THR:OG1	1:A:3:THR:N	2.31	0.62
1:A:224:TYR:CZ	1:A:228:LEU:HD23	2.34	0.62
1:B:36:LEU:HB3	1:B:43:VAL:HG21	1.80	0.62
1:A:77:MET:HG3	1:A:79:LEU:HD22	1.83	0.61
1:B:77:MET:HG3	1:B:79:LEU:HD22	1.81	0.61
1:B:238:MET:HE3	1:B:243:MET:HG2	1.83	0.59
4:A:406:EKD:N04	6:A:507:HOH:O	2.32	0.58
1:B:289:ARG:NH2	1:B:300:GLU:OE1	2.35	0.58
1:B:29:GLY:HA2	1:B:79:LEU:HD23	1.88	0.56
1:A:155:ASP:OD2	6:A:501:HOH:O	2.18	0.54
1:A:81:PRO:HD3	3:A:403[A]:NAP:H52A	1.92	0.52
1:B:68:GLU:OE1	1:B:71:LYS:NZ	2.44	0.50
1:A:323:MET:HE3	1:B:4:VAL:CG2	2.41	0.50
1:A:29:GLY:HA2	1:A:79:LEU:HD23	1.94	0.49
1:B:51:ARG:NE	1:B:51:ARG:HA	2.27	0.48
1:B:51:ARG:NH2	1:B:54:ASP:OD2	2.46	0.47
1:B:27:SER:O	1:B:133:GLY:HA3	2.15	0.46
1:A:275:LYS:HD2	1:B:212:THR:HG23	1.96	0.46
1:B:326:PHE:O	1:B:327:ILE:HG12	2.16	0.45
1:A:218:TYR:HD1	1:B:185:GLU:HG3	1.82	0.44
1:B:199:CYS:O	1:B:203[A]:SER:HB3	2.17	0.44
1:A:247:ARG:HD2	1:A:255:GLU:OE2	2.19	0.42
1:B:296:ASN:O	1:B:299:LYS:HG3	2.19	0.42
1:A:126:LEU:O	1:A:150:PHE:HA	2.19	0.42
1:A:228:LEU:O	1:A:231:MET:HB3	2.18	0.42
1:B:224:TYR:CZ	1:B:228:LEU:HD22	2.54	0.41
1:B:229:HIS:HD2	6:B:507:HOH:O	2.03	0.41
1:A:225:PHE:HA	1:A:229:HIS:HB3	2.02	0.41
1:A:327:ILE:HG21	1:B:240:GLU:HG2	2.03	0.41
1:A:89:TYR:HA	1:A:93:ILE:HB	2.02	0.41
1:B:92:GLU:O	1:B:96:ASN:ND2	2.49	0.41

Continued on next page...

Continued from previous page...

Atom-1	Atom-2	Interatomic distance (Å)	Clash overlap (Å)
1:B:250:ILE:O	6:B:501:HOH:O	2.22	0.40
1:B:289:ARG:HH21	1:B:300:GLU:CD	2.23	0.40
1:A:226:GLU:OE2	6:A:502:HOH:O	2.21	0.40
1:A:2:THR:N	6:A:523:HOH:O	2.55	0.40
1:B:25:TYR:CE2	1:B:30:HIS:HA	2.56	0.40
1:B:311:HIS:CD2	1:B:311:HIS:H	2.40	0.40

There are no symmetry-related clashes.

5.3 Torsion angles [i](#)

5.3.1 Protein backbone [i](#)

In the following table, the Percentiles column shows the percent Ramachandran outliers of the chain as a percentile score with respect to all X-ray entries followed by that with respect to entries of similar resolution.

The Analysed column shows the number of residues for which the backbone conformation was analysed, and the total number of residues.

Mol	Chain	Analysed	Favoured	Allowed	Outliers	Percentiles	
1	A	328/340 (96%)	320 (98%)	8 (2%)	0	100	100
1	B	325/340 (96%)	316 (97%)	9 (3%)	0	100	100
All	All	653/680 (96%)	636 (97%)	17 (3%)	0	100	100

There are no Ramachandran outliers to report.

5.3.2 Protein sidechains [i](#)

In the following table, the Percentiles column shows the percent sidechain outliers of the chain as a percentile score with respect to all X-ray entries followed by that with respect to entries of similar resolution.

The Analysed column shows the number of residues for which the sidechain conformation was analysed, and the total number of residues.

Mol	Chain	Analysed	Rotameric	Outliers	Percentiles	
1	A	273/283 (96%)	269 (98%)	4 (2%)	65	71
1	B	270/283 (95%)	266 (98%)	4 (2%)	65	71

Continued on next page...

Continued from previous page...

Mol	Chain	Analysed	Rotameric	Outliers	Percentiles
All	All	543/566 (96%)	535 (98%)	8 (2%)	69 71

All (8) residues with a non-rotameric sidechain are listed below:

Mol	Chain	Res	Type
1	A	79	LEU
1	A	298	PHE
1	A	322[A]	GLU
1	A	322[B]	GLU
1	B	36	LEU
1	B	79	LEU
1	B	99	LYS
1	B	298	PHE

Sometimes sidechains can be flipped to improve hydrogen bonding and reduce clashes. All (3) such sidechains are listed below:

Mol	Chain	Res	Type
1	A	16	GLN
1	A	117	GLN
1	B	229	HIS

5.3.3 RNA [i](#)

There are no RNA molecules in this entry.

5.4 Non-standard residues in protein, DNA, RNA chains [i](#)

There are no non-standard protein/DNA/RNA residues in this entry.

5.5 Carbohydrates [i](#)

There are no monosaccharides in this entry.

5.6 Ligand geometry [i](#)

Of 10 ligands modelled in this entry, 4 are monoatomic - leaving 6 for Mogul analysis.

In the following table, the Counts columns list the number of bonds (or angles) for which Mogul statistics could be retrieved, the number of bonds (or angles) that are observed in the model and

the number of bonds (or angles) that are defined in the Chemical Component Dictionary. The Link column lists molecule types, if any, to which the group is linked. The Z score for a bond length (or angle) is the number of standard deviations the observed value is removed from the expected value. A bond length (or angle) with $|Z| > 2$ is considered an outlier worth inspection. RMSZ is the root-mean-square of all Z scores of the bond lengths (or angles).

Mol	Type	Chain	Res	Link	Bond lengths			Bond angles		
					Counts	RMSZ	# Z > 2	Counts	RMSZ	# Z > 2
3	NAP	A	403[B]	-	45,52,52	2.81	16 (35%)	56,80,80	1.86	11 (19%)
3	NAP	A	403[A]	-	45,52,52	2.68	13 (28%)	56,80,80	1.98	15 (26%)
5	EKA	A	407[B]	2	12,13,13	3.88	4 (33%)	13,17,17	2.07	5 (38%)
4	EKD	A	404[A]	2	12,12,12	2.65	4 (33%)	14,15,15	1.96	4 (28%)
3	NAP	B	402	-	45,52,52	2.74	14 (31%)	56,80,80	1.97	14 (25%)
4	EKD	A	406	2	12,12,12	2.23	4 (33%)	14,15,15	2.64	6 (42%)

In the following table, the Chirals column lists the number of chiral outliers, the number of chiral centers analysed, the number of these observed in the model and the number defined in the Chemical Component Dictionary. Similar counts are reported in the Torsion and Rings columns. '-' means no outliers of that kind were identified.

Mol	Type	Chain	Res	Link	Chirals	Torsions	Rings
3	NAP	A	403[B]	-	-	5/31/67/67	0/5/5/5
3	NAP	A	403[A]	-	-	8/31/67/67	0/5/5/5
5	EKA	A	407[B]	2	-	4/8/20/20	0/1/1/1
4	EKD	A	404[A]	2	-	3/7/16/16	0/1/1/1
3	NAP	B	402	-	-	5/31/67/67	0/5/5/5
4	EKD	A	406	2	-	2/7/16/16	0/1/1/1

All (55) bond length outliers are listed below:

Mol	Chain	Res	Type	Atoms	Z	Observed(Å)	Ideal(Å)
3	A	403[A]	NAP	P2B-O2B	12.53	1.83	1.59
3	A	403[B]	NAP	P2B-O2B	12.15	1.82	1.59
5	A	407[B]	EKA	C03-N04	12.09	1.47	1.34
3	B	402	NAP	P2B-O2B	11.55	1.81	1.59
3	B	402	NAP	C5N-C4N	6.13	1.51	1.38
3	B	402	NAP	C4N-C3N	6.08	1.49	1.39
4	A	404[A]	EKD	O11-C03	-5.66	1.12	1.23
3	A	403[A]	NAP	C4N-C3N	5.60	1.48	1.39
3	A	403[B]	NAP	C4N-C3N	5.42	1.48	1.39
3	A	403[B]	NAP	C4A-N3A	5.36	1.43	1.35
4	A	404[A]	EKD	C03-N04	4.98	1.44	1.34

Continued on next page...

Continued from previous page...

Mol	Chain	Res	Type	Atoms	Z	Observed(Å)	Ideal(Å)
3	A	403[A]	NAP	C5N-C4N	4.62	1.48	1.38
3	A	403[B]	NAP	C5N-C4N	4.55	1.48	1.38
4	A	406	EKD	O11-C03	-4.47	1.15	1.23
3	B	402	NAP	C2N-N1N	4.14	1.40	1.35
3	A	403[A]	NAP	PN-O5D	3.82	1.74	1.59
3	A	403[B]	NAP	PN-O5D	3.80	1.74	1.59
4	A	406	EKD	O12-C02	-3.76	1.19	1.30
3	B	402	NAP	PN-O5D	3.75	1.74	1.59
3	A	403[B]	NAP	C7N-N7N	3.67	1.40	1.33
4	A	406	EKD	C05-N04	-3.60	1.39	1.46
4	A	404[A]	EKD	O12-C02	-3.54	1.20	1.30
5	A	407[B]	EKA	O12-C03	-3.39	1.16	1.23
3	A	403[B]	NAP	C2N-N1N	3.37	1.39	1.35
3	A	403[A]	NAP	C3N-C7N	-3.25	1.45	1.50
3	A	403[B]	NAP	O4B-C1B	3.20	1.45	1.41
3	A	403[A]	NAP	C7N-N7N	3.19	1.39	1.33
3	B	402	NAP	O2B-C2B	-3.12	1.32	1.44
3	A	403[B]	NAP	C2A-N1A	3.10	1.39	1.33
3	B	402	NAP	C6N-N1N	3.08	1.42	1.35
5	A	407[B]	EKA	O13-C02	-3.01	1.21	1.30
4	A	406	EKD	C03-N04	2.96	1.40	1.34
3	B	402	NAP	C2A-N1A	2.88	1.39	1.33
3	A	403[A]	NAP	O2B-C2B	-2.84	1.33	1.44
3	A	403[A]	NAP	C2N-N1N	2.77	1.38	1.35
3	A	403[A]	NAP	C2A-N1A	2.77	1.39	1.33
3	A	403[A]	NAP	C4A-N3A	2.72	1.39	1.35
5	A	407[B]	EKA	O05-N04	2.68	1.44	1.40
3	B	402	NAP	O5D-C5D	-2.66	1.34	1.44
3	A	403[B]	NAP	C3N-C7N	-2.65	1.46	1.50
3	B	402	NAP	C3N-C7N	-2.63	1.46	1.50
3	A	403[B]	NAP	C2A-N3A	2.51	1.36	1.32
4	A	404[A]	EKD	C05-N04	-2.50	1.41	1.46
3	A	403[B]	NAP	O2B-C2B	-2.41	1.35	1.44
3	B	402	NAP	C4A-N3A	2.36	1.38	1.35
3	A	403[B]	NAP	C6N-C5N	-2.31	1.33	1.38
3	A	403[A]	NAP	C6N-N1N	2.28	1.41	1.35
3	A	403[B]	NAP	O5D-C5D	-2.25	1.36	1.44
3	B	402	NAP	C3D-C4D	2.23	1.58	1.53
3	A	403[B]	NAP	C6N-N1N	2.22	1.40	1.35
3	A	403[B]	NAP	C3B-C2B	2.18	1.57	1.52
3	B	402	NAP	C7N-N7N	2.16	1.37	1.33
3	A	403[A]	NAP	C6N-C5N	-2.11	1.33	1.38

Continued on next page...

Continued from previous page...

Mol	Chain	Res	Type	Atoms	Z	Observed(Å)	Ideal(Å)
3	A	403[A]	NAP	O5D-C5D	-2.01	1.37	1.44
3	B	402	NAP	O5B-C5B	-2.01	1.37	1.44

All (55) bond angle outliers are listed below:

Mol	Chain	Res	Type	Atoms	Z	Observed(°)	Ideal(°)
4	A	406	EKD	C06-C05-N04	-7.10	95.87	110.56
3	B	402	NAP	C5N-C4N-C3N	-6.83	112.27	120.34
3	A	403[A]	NAP	PN-O3-PA	-6.61	110.13	132.83
3	A	403[A]	NAP	C5N-C4N-C3N	-6.53	112.61	120.34
3	A	403[B]	NAP	C5N-C4N-C3N	-6.24	112.96	120.34
3	B	402	NAP	PN-O3-PA	-5.62	113.56	132.83
3	A	403[B]	NAP	PN-O3-PA	-5.22	114.90	132.83
5	A	407[B]	EKA	O13-C02-C03	4.56	124.42	113.84
3	B	402	NAP	C2N-C3N-C4N	4.28	123.11	118.26
4	A	406	EKD	O11-C03-N04	-4.25	115.63	123.08
3	A	403[A]	NAP	C2N-C3N-C4N	3.96	122.74	118.26
3	B	402	NAP	O2B-P2B-O1X	-3.77	94.84	109.39
4	A	404[A]	EKD	O12-C02-C03	3.71	124.08	113.15
5	A	407[B]	EKA	O13-C02-O01	-3.65	115.27	123.61
3	A	403[B]	NAP	C2N-C3N-C4N	3.64	122.38	118.26
4	A	404[A]	EKD	O12-C02-O01	-3.59	115.39	123.61
4	A	404[A]	EKD	O11-C03-N04	-3.40	117.11	123.08
3	A	403[A]	NAP	O2B-P2B-O1X	-3.29	96.68	109.39
4	A	406	EKD	C10-C05-C06	3.24	116.44	110.82
3	A	403[B]	NAP	O2B-P2B-O1X	-3.24	96.89	109.39
3	A	403[B]	NAP	O7N-C7N-N7N	-3.14	118.12	122.58
3	B	402	NAP	O7N-C7N-N7N	-3.05	118.25	122.58
3	A	403[A]	NAP	O7N-C7N-C3N	3.03	123.26	119.63
3	A	403[A]	NAP	PA-O5B-C5B	-2.90	104.69	121.68
3	A	403[B]	NAP	C3B-C2B-C1B	-2.86	97.51	102.89
3	A	403[A]	NAP	O7N-C7N-N7N	-2.79	118.61	122.58
3	A	403[B]	NAP	PA-O5B-C5B	-2.79	105.33	121.68
5	A	407[B]	EKA	O12-C03-N04	-2.71	117.26	120.62
3	B	402	NAP	O2N-PN-O1N	2.61	125.14	112.24
3	A	403[A]	NAP	O3X-P2B-O2X	2.52	117.27	107.64
3	B	402	NAP	PA-O5B-C5B	-2.50	107.02	121.68
3	A	403[B]	NAP	C3N-C7N-N7N	2.49	120.74	117.75
4	A	404[A]	EKD	C08-C09-C10	-2.47	106.38	111.42
3	A	403[B]	NAP	O3X-P2B-O2X	2.44	116.98	107.64
3	A	403[A]	NAP	C2A-N1A-C6A	-2.44	114.58	118.75
3	B	402	NAP	O7N-C7N-C3N	2.43	122.54	119.63

Continued on next page...

Continued from previous page...

Mol	Chain	Res	Type	Atoms	Z	Observed(°)	Ideal(°)
3	B	402	NAP	C3D-C2D-C1D	-2.43	97.33	100.98
3	B	402	NAP	O3X-P2B-O2X	2.32	116.52	107.64
3	A	403[A]	NAP	O2N-PN-O1N	2.31	123.67	112.24
3	A	403[A]	NAP	C3B-C2B-C1B	-2.29	98.58	102.89
4	A	406	EKD	O12-C02-C03	2.21	119.65	113.15
3	A	403[A]	NAP	O5D-PN-O1N	-2.20	100.46	109.07
3	A	403[A]	NAP	PN-O5D-C5D	-2.20	108.77	121.68
3	B	402	NAP	O5D-PN-O1N	-2.20	100.49	109.07
3	B	402	NAP	O4B-C4B-C3B	2.19	109.44	105.11
4	A	406	EKD	O12-C02-O01	-2.15	118.68	123.61
3	A	403[B]	NAP	O2N-PN-O1N	2.14	122.83	112.24
3	B	402	NAP	C3B-C2B-C1B	-2.10	98.94	102.89
3	A	403[B]	NAP	O3D-C3D-C4D	-2.08	105.02	111.05
5	A	407[B]	EKA	C11-C06-N04	2.07	113.86	111.80
3	A	403[A]	NAP	C6N-N1N-C2N	-2.06	120.09	121.97
5	A	407[B]	EKA	O01-C02-C03	-2.05	120.30	123.07
3	A	403[A]	NAP	O4B-C4B-C3B	2.04	109.15	105.11
3	B	402	NAP	O2A-PA-O1A	2.02	122.21	112.24
4	A	406	EKD	C07-C06-C05	2.01	114.88	111.11

There are no chirality outliers.

All (27) torsion outliers are listed below:

Mol	Chain	Res	Type	Atoms
3	A	403[A]	NAP	C5D-O5D-PN-O3
3	A	403[A]	NAP	C5D-O5D-PN-O1N
3	A	403[A]	NAP	O4D-C1D-N1N-C2N
3	A	403[B]	NAP	O4D-C1D-N1N-C2N
3	A	403[B]	NAP	O4D-C1D-N1N-C6N
3	A	403[B]	NAP	C2D-C1D-N1N-C6N
3	B	402	NAP	O4D-C1D-N1N-C2N
3	B	402	NAP	O4D-C1D-N1N-C6N
4	A	404[A]	EKD	C02-C03-N04-C05
4	A	404[A]	EKD	O11-C03-N04-C05
4	A	406	EKD	C02-C03-N04-C05
4	A	406	EKD	O11-C03-N04-C05
5	A	407[B]	EKA	O01-C02-C03-N04
5	A	407[B]	EKA	C07-C06-N04-O05
3	A	403[A]	NAP	O4B-C4B-C5B-O5B
5	A	407[B]	EKA	C11-C06-N04-C03
3	A	403[A]	NAP	O4D-C4D-C5D-O5D
5	A	407[B]	EKA	C07-C06-N04-C03

Continued on next page...

Continued from previous page...

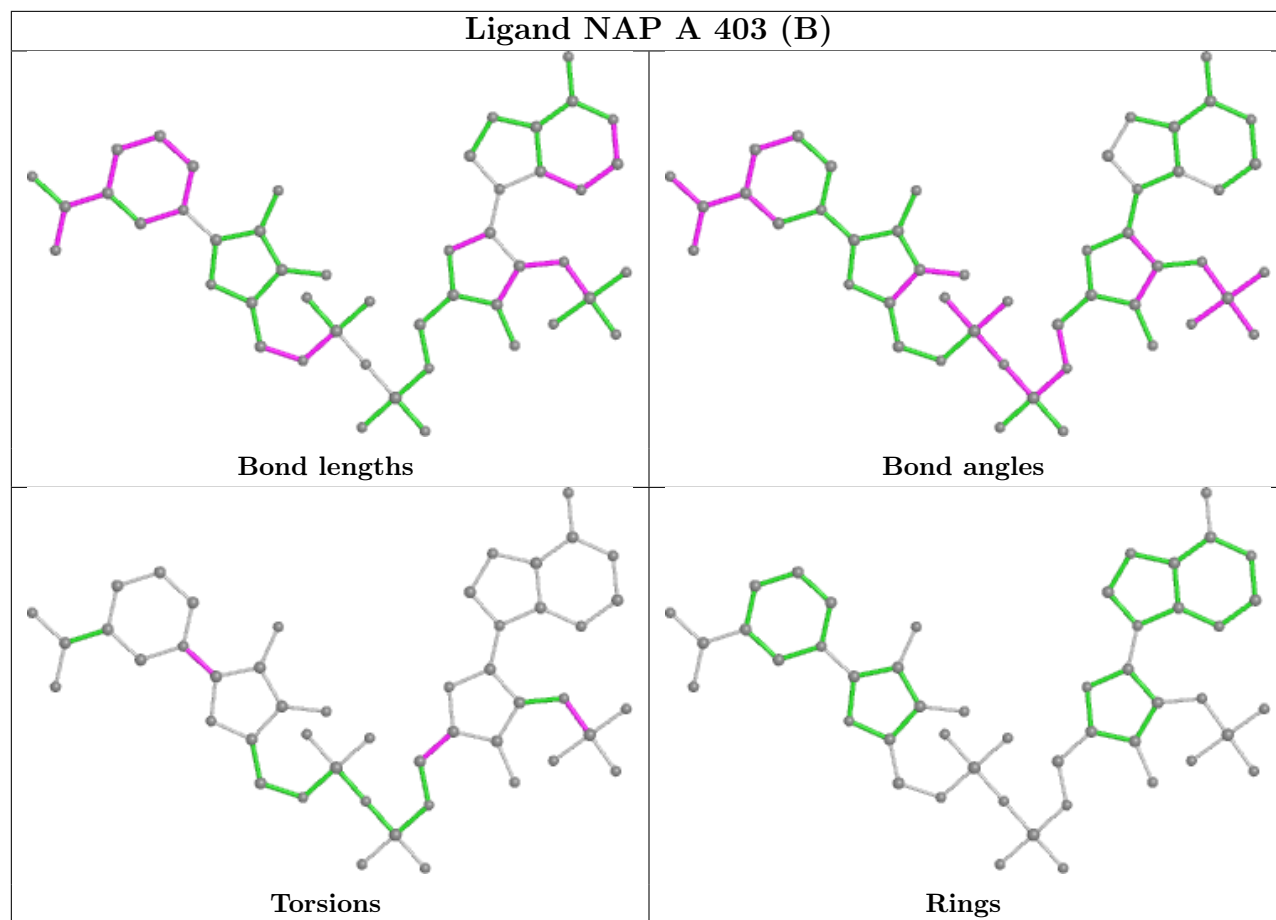
Mol	Chain	Res	Type	Atoms
3	A	403[A]	NAP	C3B-C4B-C5B-O5B
3	A	403[B]	NAP	C2B-O2B-P2B-O1X
3	B	402	NAP	C2B-O2B-P2B-O1X
4	A	404[A]	EKD	O12-C02-C03-N04
3	A	403[A]	NAP	C3D-C4D-C5D-O5D
3	A	403[B]	NAP	O4B-C4B-C5B-O5B
3	A	403[A]	NAP	C2B-O2B-P2B-O1X
3	B	402	NAP	C2D-C1D-N1N-C6N
3	B	402	NAP	O4B-C4B-C5B-O5B

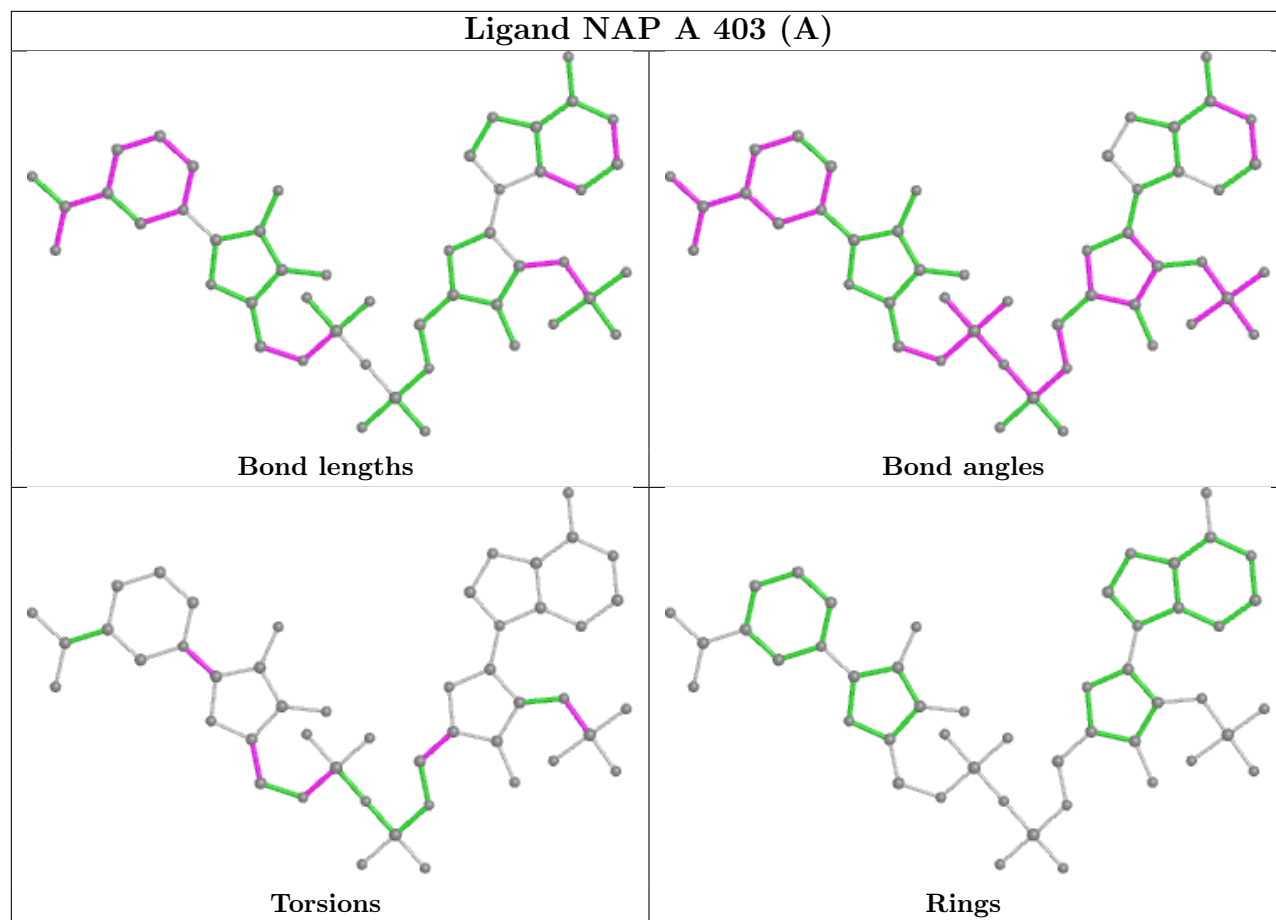
There are no ring outliers.

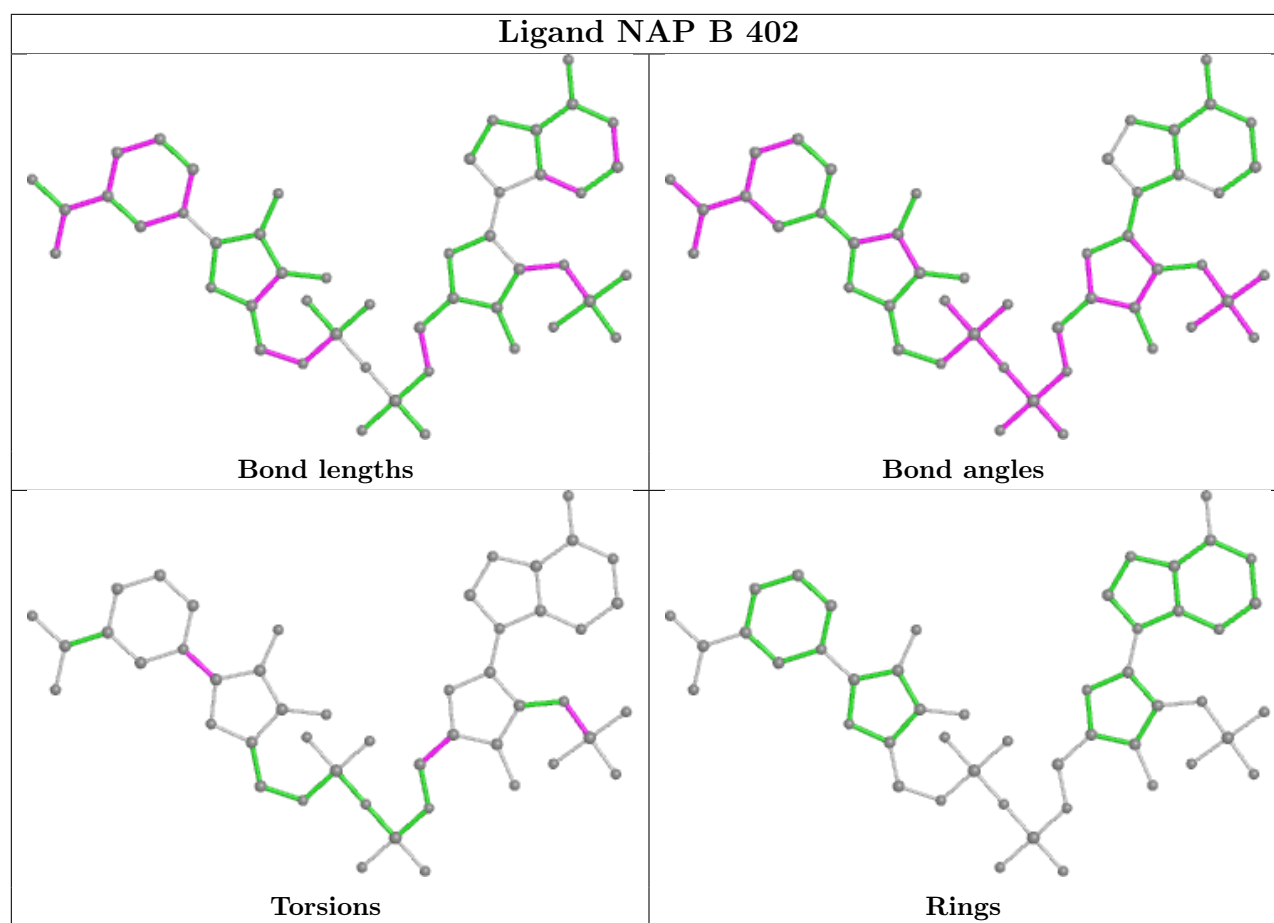
3 monomers are involved in 3 short contacts:

Mol	Chain	Res	Type	Clashes	Symm-Clashes
3	A	403[A]	NAP	1	0
5	A	407[B]	EKA	1	0
4	A	406	EKD	1	0

The following is a two-dimensional graphical depiction of Mogul quality analysis of bond lengths, bond angles, torsion angles, and ring geometry for all instances of the Ligand of Interest. In addition, ligands with molecular weight > 250 and outliers as shown on the validation Tables will also be included. For torsion angles, if less than 5% of the Mogul distribution of torsion angles is within 10 degrees of the torsion angle in question, then that torsion angle is considered an outlier. Any bond that is central to one or more torsion angles identified as an outlier by Mogul will be highlighted in the graph. For rings, the root-mean-square deviation (RMSD) between the ring in question and similar rings identified by Mogul is calculated over all ring torsion angles. If the average RMSD is greater than 60 degrees and the minimal RMSD between the ring in question and any Mogul-identified rings is also greater than 60 degrees, then that ring is considered an outlier. The outliers are highlighted in purple. The color gray indicates Mogul did not find sufficient equivalents in the CSD to analyse the geometry.







5.7 Other polymers [\(i\)](#)

There are no such residues in this entry.

5.8 Polymer linkage issues [\(i\)](#)

There are no chain breaks in this entry.

6 Fit of model and data [i](#)

6.1 Protein, DNA and RNA chains [i](#)

In the following table, the column labelled ‘#RSRZ > 2’ contains the number (and percentage) of RSRZ outliers, followed by percent RSRZ outliers for the chain as percentile scores relative to all X-ray entries and entries of similar resolution. The OWAB column contains the minimum, median, 95th percentile and maximum values of the occupancy-weighted average B-factor per residue. The column labelled ‘Q < 0.9’ lists the number of (and percentage) of residues with an average occupancy less than 0.9.

Mol	Chain	Analysed	<RSRZ>	#RSRZ>2	OWAB(Å ²)	Q<0.9
1	A	326/340 (95%)	-0.25	6 (1%) 68 72	20, 28, 44, 81	2 (0%)
1	B	326/340 (95%)	0.01	10 (3%) 49 55	20, 33, 50, 66	3 (0%)
All	All	652/680 (95%)	-0.12	16 (2%) 57 62	20, 30, 48, 81	5 (0%)

All (16) RSRZ outliers are listed below:

Mol	Chain	Res	Type	RSRZ
1	A	327	ILE	4.7
1	B	51	ARG	4.2
1	B	2	THR	4.0
1	B	327	ILE	3.8
1	A	325	PRO	3.6
1	B	325	PRO	3.2
1	A	326	PHE	3.2
1	B	58	GLU	3.0
1	A	2	THR	2.8
1	A	248	TYR	2.8
1	B	144	SER	2.6
1	B	143	GLY	2.4
1	B	54	ASP	2.2
1	B	16	GLN	2.2
1	B	269	ASP	2.1
1	A	244	GLU	2.0

6.2 Non-standard residues in protein, DNA, RNA chains [i](#)

There are no non-standard protein/DNA/RNA residues in this entry.

6.3 Carbohydrates [i](#)

There are no monosaccharides in this entry.

6.4 Ligands [i](#)

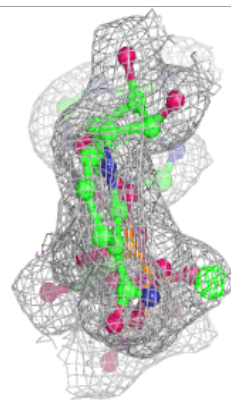
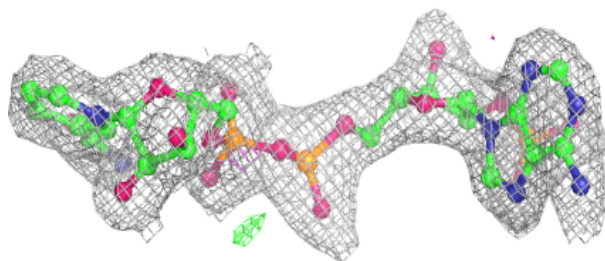
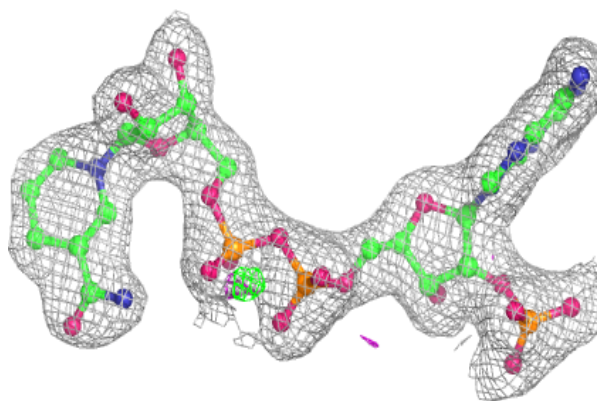
In the following table, the Atoms column lists the number of modelled atoms in the group and the number defined in the chemical component dictionary. The B-factors column lists the minimum, median, 95th percentile and maximum values of B factors of atoms in the group. The column labelled 'Q< 0.9' lists the number of atoms with occupancy less than 0.9.

Mol	Type	Chain	Res	Atoms	RSCC	RSR	B-factors(Å ²)	Q<0.9
2	MG	A	405	1/1	0.85	0.11	42,42,42,42	0
4	EKD	A	406	12/12	0.94	0.25	37,56,60,61	0
4	EKD	A	404[A]	12/12	0.95	0.17	25,32,35,36	12
5	EKA	A	407[B]	13/13	0.95	0.18	25,32,35,37	13
3	NAP	B	402	48/48	0.96	0.10	25,34,42,43	0
3	NAP	A	403[B]	48/48	0.97	0.14	20,25,28,31	48
2	MG	A	402	1/1	0.97	0.05	33,33,33,33	0
2	MG	A	401	1/1	0.97	0.09	22,22,22,22	0
2	MG	B	401	1/1	0.97	0.11	31,31,31,31	0
3	NAP	A	403[A]	48/48	0.97	0.14	21,25,27,29	48

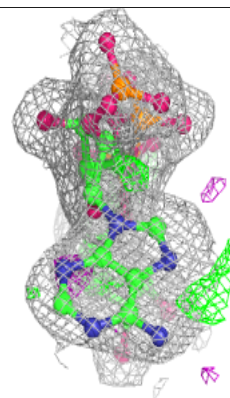
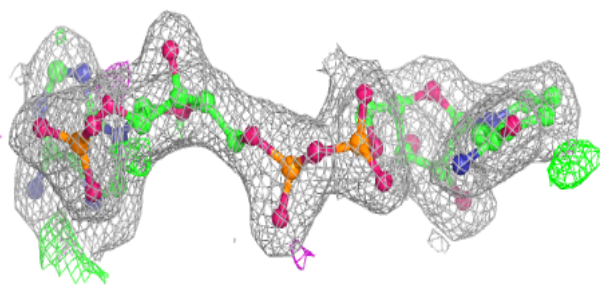
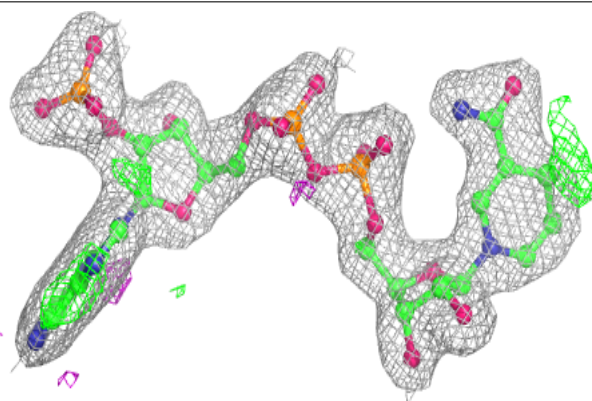
The following is a graphical depiction of the model fit to experimental electron density of all instances of the Ligand of Interest. In addition, ligands with molecular weight > 250 and outliers as shown on the geometry validation Tables will also be included. Each fit is shown from different orientation to approximate a three-dimensional view.

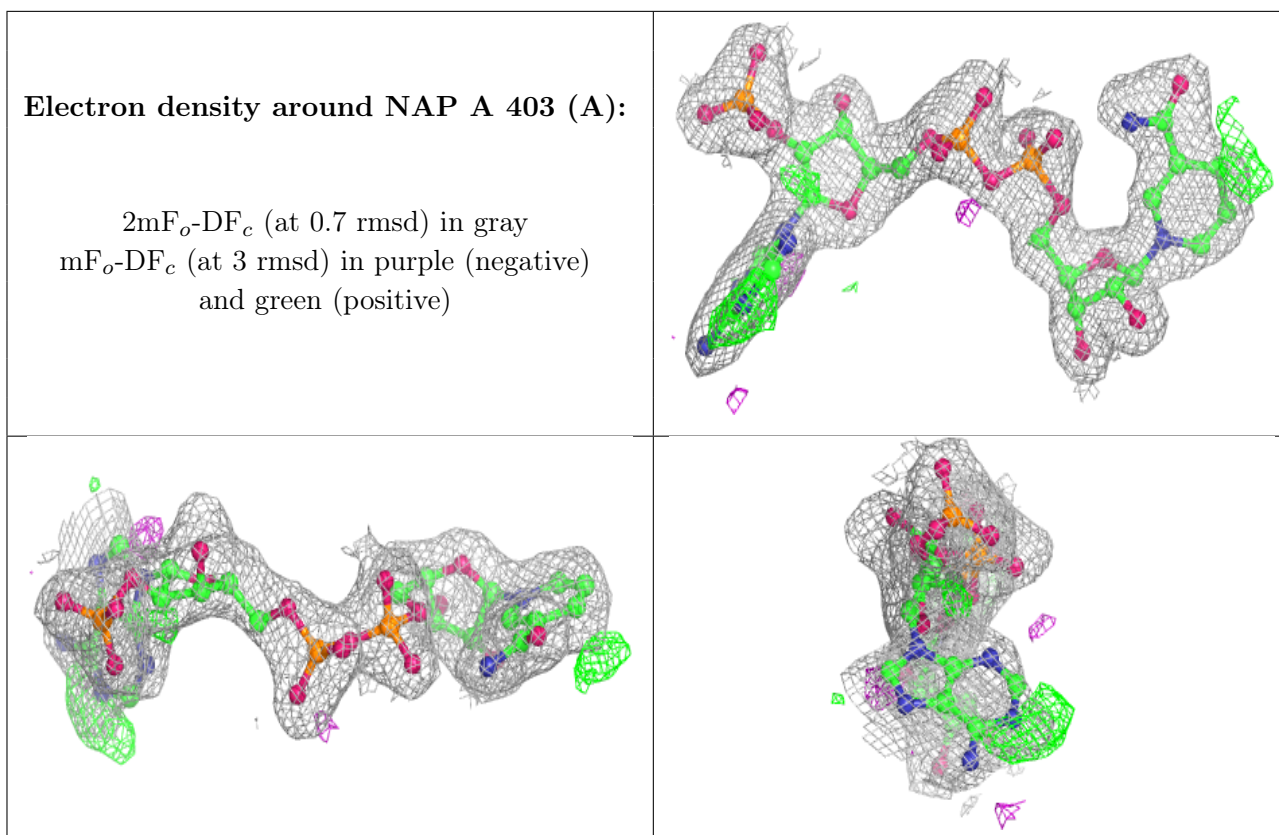
Electron density around NAP B 402:

$2mF_o-DF_c$ (at 0.7 rmsd) in gray
 mF_o-DF_c (at 3 rmsd) in purple (negative)
and green (positive)

**Electron density around NAP A 403 (B):**

$2mF_o-DF_c$ (at 0.7 rmsd) in gray
 mF_o-DF_c (at 3 rmsd) in purple (negative)
and green (positive)





6.5 Other polymers [i](#)

There are no such residues in this entry.