



Full wwPDB X-ray Structure Validation Report ⓘ

Sep 26, 2023 – 04:56 PM EDT

PDB ID : 6DAB
Title : Human CYP3A4 bound to an inhibitor
Authors : Sevrioukova, I.F.
Deposited on : 2018-05-01
Resolution : 2.35 Å(reported)

This is a Full wwPDB X-ray Structure Validation Report for a publicly released PDB entry.

We welcome your comments at validation@mail.wwpdb.org

A user guide is available at

<https://www.wwpdb.org/validation/2017/XrayValidationReportHelp>

with specific help available everywhere you see the ⓘ symbol.

The types of validation reports are described at

<http://www.wwpdb.org/validation/2017/FAQs#types>.

The following versions of software and data (see [references ⓘ](#)) were used in the production of this report:

MolProbity : 4.02b-467
Mogul : 1.8.5 (274361), CSD as541be (2020)
Xtriage (Phenix) : 1.13
EDS : 2.35.1
buster-report : 1.1.7 (2018)
Percentile statistics : 20191225.v01 (using entries in the PDB archive December 25th 2019)
Refmac : 5.8.0158
CCP4 : 7.0.044 (Gargrove)
Ideal geometry (proteins) : Engh & Huber (2001)
Ideal geometry (DNA, RNA) : Parkinson et al. (1996)
Validation Pipeline (wwPDB-VP) : 2.35.1

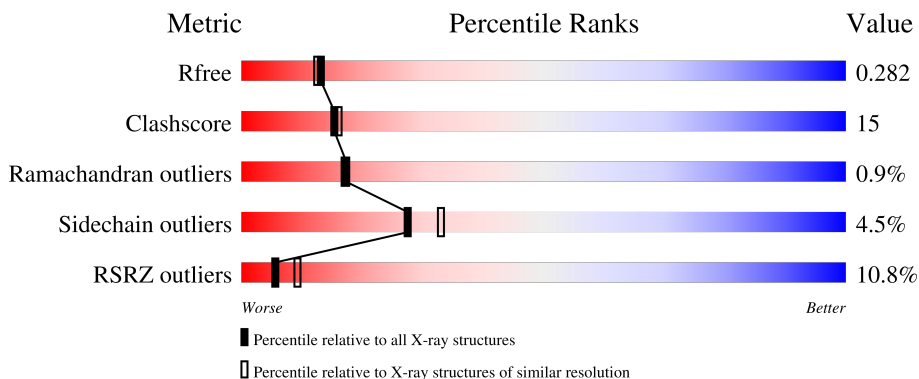
1 Overall quality at a glance

The following experimental techniques were used to determine the structure:

X-RAY DIFFRACTION

The reported resolution of this entry is 2.35 Å.

Percentile scores (ranging between 0-100) for global validation metrics of the entry are shown in the following graphic. The table shows the number of entries on which the scores are based.



Metric	Whole archive (#Entries)	Similar resolution (#Entries, resolution range(Å))
R_{free}	130704	1164 (2.36-2.36)
Clashscore	141614	1232 (2.36-2.36)
Ramachandran outliers	138981	1211 (2.36-2.36)
Sidechain outliers	138945	1212 (2.36-2.36)
RSRZ outliers	127900	1150 (2.36-2.36)

The table below summarises the geometric issues observed across the polymeric chains and their fit to the electron density. The red, orange, yellow and green segments of the lower bar indicate the fraction of residues that contain outliers for ≥ 3 , 2, 1 and 0 types of geometric quality criteria respectively. A grey segment represents the fraction of residues that are not modelled. The numeric value for each fraction is indicated below the corresponding segment, with a dot representing fractions $\leq 5\%$. The upper red bar (where present) indicates the fraction of residues that have poor fit to the electron density. The numeric value is given above the bar.

Mol	Chain	Length	Quality of chain
1	A	487	

The following table lists non-polymeric compounds, carbohydrate monomers and non-standard residues in protein, DNA, RNA chains that are outliers for geometric or electron-density-fit criteria:

Mol	Type	Chain	Res	Chirality	Geometry	Clashes	Electron density
3	GOL	A	602	-	-	X	-

2 Entry composition [i](#)

There are 5 unique types of molecules in this entry. The entry contains 3609 atoms, of which 0 are hydrogens and 0 are deuteriums.

In the tables below, the ZeroOcc column contains the number of atoms modelled with zero occupancy, the AltConf column contains the number of residues with at least one atom in alternate conformation and the Trace column contains the number of residues modelled with at most 2 atoms.

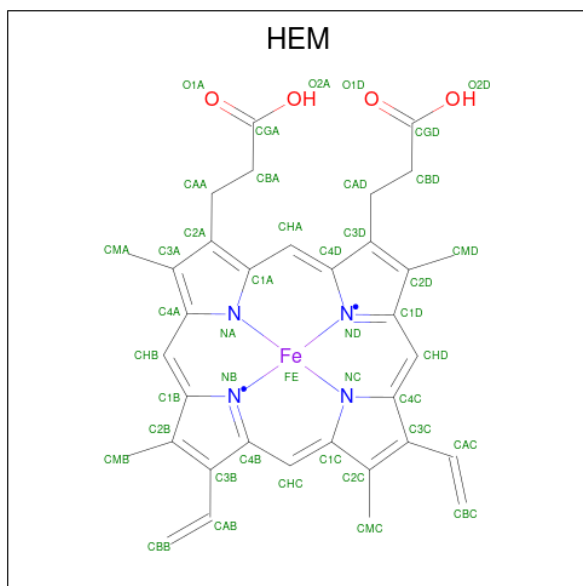
- Molecule 1 is a protein called Cytochrome P450 3A4.

Mol	Chain	Residues	Atoms					ZeroOcc	AltConf	Trace
			Total	C	N	O	S			
1	A	436	3512	2291	570	624	27	0	3	0

There are 6 discrepancies between the modelled and reference sequences:

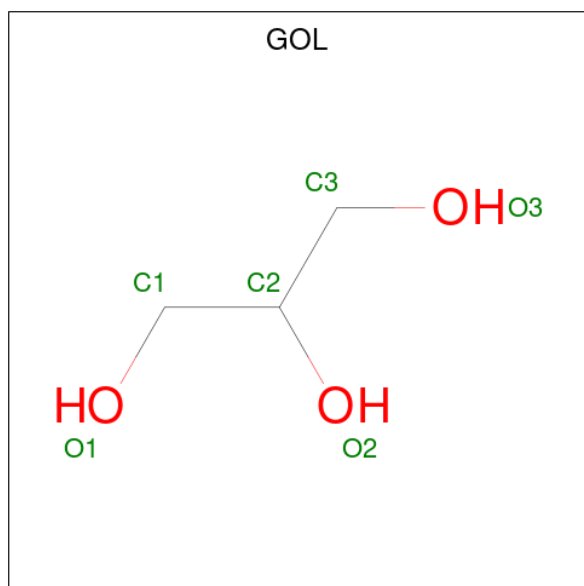
Chain	Residue	Modelled	Actual	Comment	Reference
A	1	MET	-	initiating methionine	UNP P08684
A	2	ALA	-	expression tag	UNP P08684
A	504	HIS	-	expression tag	UNP P08684
A	505	HIS	-	expression tag	UNP P08684
A	506	HIS	-	expression tag	UNP P08684
A	507	HIS	-	expression tag	UNP P08684

- Molecule 2 is PROTOPORPHYRIN IX CONTAINING FE (three-letter code: HEM) (formula: $C_{34}H_{32}FeN_4O_4$).



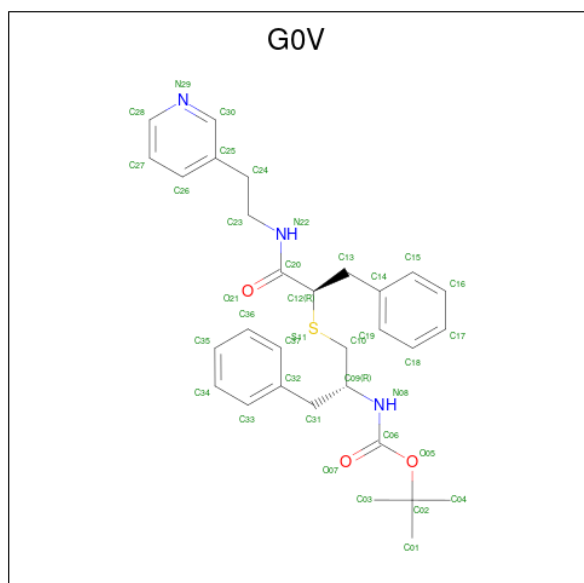
Mol	Chain	Residues	Atoms				ZeroOcc	AltConf	
			Total	C	Fe	N			O
2	A	1	43	34	1	4	4	0	0

- Molecule 3 is GLYCEROL (three-letter code: GOL) (formula: C₃H₈O₃).



Mol	Chain	Residues	Atoms			ZeroOcc	AltConf
			Total	C	O		
3	A	1	6	3	3	0	0

- Molecule 4 is tert-butyl [(2R)-1-{(2R)-1-oxo-3-phenyl-1-[2-(pyridin-3-yl)ethyl]amino}propan-2-yl]sulfanyl-3-phenylpropan-2-yl]carbamate (three-letter code: G0V) (formula: C₃₀H₃₇N₃O₃S).



Mol	Chain	Residues	Atoms					ZeroOcc	AltConf
			Total	C	N	O	S		
4	A	1	37	30	3	3	1	0	0

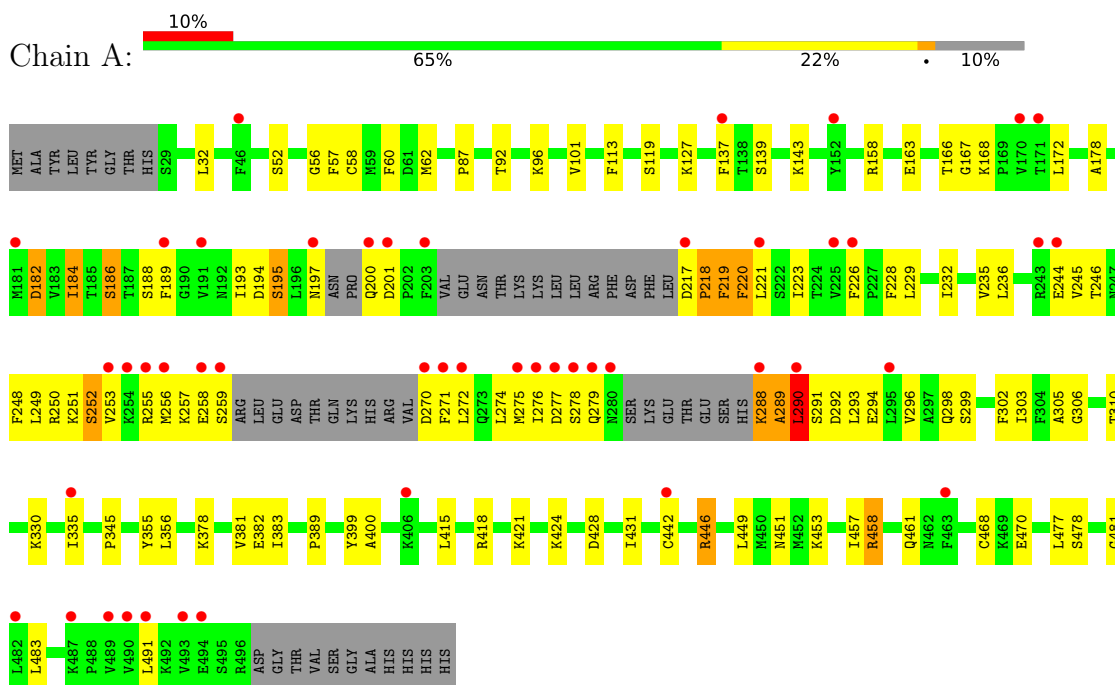
- Molecule 5 is water.

Mol	Chain	Residues	Atoms		ZeroOcc	AltConf
5	A	11	Total	O	0	0
			11	11		

3 Residue-property plots

These plots are drawn for all protein, RNA, DNA and oligosaccharide chains in the entry. The first graphic for a chain summarises the proportions of the various outlier classes displayed in the second graphic. The second graphic shows the sequence view annotated by issues in geometry and electron density. Residues are color-coded according to the number of geometric quality criteria for which they contain at least one outlier: green = 0, yellow = 1, orange = 2 and red = 3 or more. A red dot above a residue indicates a poor fit to the electron density ($RSRZ > 2$). Stretches of 2 or more consecutive residues without any outlier are shown as a green connector. Residues present in the sample, but not in the model, are shown in grey.

- Molecule 1: Cytochrome P450 3A4



4 Data and refinement statistics

Property	Value	Source
Space group	I 2 2 2	Depositor
Cell constants a, b, c, α , β , γ	77.20Å 101.12Å 126.05Å 90.00° 90.00° 90.00°	Depositor
Resolution (Å)	39.44 – 2.35 39.44 – 2.35	Depositor EDS
% Data completeness (in resolution range)	99.4 (39.44-2.35) 99.4 (39.44-2.35)	Depositor EDS
R_{merge}	0.06	Depositor
R_{sym}	(Not available)	Depositor
$\langle I/\sigma(I) \rangle$ ¹	1.65 (at 2.34Å)	Xtrriage
Refinement program	PHENIX (1.11.1_2575)	Depositor
R, R_{free}	0.215 , 0.270 0.221 , 0.282	Depositor DCC
R_{free} test set	1040 reflections (5.00%)	wwPDB-VP
Wilson B-factor (Å ²)	75.1	Xtrriage
Anisotropy	0.057	Xtrriage
Bulk solvent k_{sol} (e/Å ³), B_{sol} (Å ²)	0.29 , 77.1	EDS
L-test for twinning ²	$\langle L \rangle = 0.49$, $\langle L^2 \rangle = 0.32$	Xtrriage
Estimated twinning fraction	No twinning to report.	Xtrriage
F_o, F_c correlation	0.95	EDS
Total number of atoms	3609	wwPDB-VP
Average B, all atoms (Å ²)	110.0	wwPDB-VP

Xtrriage's analysis on translational NCS is as follows: *The largest off-origin peak in the Patterson function is 4.50% of the height of the origin peak. No significant pseudotranslation is detected.*

¹Intensities estimated from amplitudes.

²Theoretical values of $\langle |L| \rangle$, $\langle L^2 \rangle$ for acentric reflections are 0.5, 0.333 respectively for untwinned datasets, and 0.375, 0.2 for perfectly twinned datasets.

5 Model quality [i](#)

5.1 Standard geometry [i](#)

Bond lengths and bond angles in the following residue types are not validated in this section: G0V, HEM, GOL

The Z score for a bond length (or angle) is the number of standard deviations the observed value is removed from the expected value. A bond length (or angle) with $|Z| > 5$ is considered an outlier worth inspection. RMSZ is the root-mean-square of all Z scores of the bond lengths (or angles).

Mol	Chain	Bond lengths		Bond angles	
		RMSZ	# Z >5	RMSZ	# Z >5
1	A	0.45	0/3604	0.61	0/4869

There are no bond length outliers.

There are no bond angle outliers.

There are no chirality outliers.

There are no planarity outliers.

5.2 Too-close contacts [i](#)

In the following table, the Non-H and H(model) columns list the number of non-hydrogen atoms and hydrogen atoms in the chain respectively. The H(added) column lists the number of hydrogen atoms added and optimized by MolProbity. The Clashes column lists the number of clashes within the asymmetric unit, whereas Symm-Clashes lists symmetry-related clashes.

Mol	Chain	Non-H	H(model)	H(added)	Clashes	Symm-Clashes
1	A	3512	0	3604	107	0
2	A	43	0	30	5	0
3	A	6	0	8	4	0
4	A	37	0	0	0	0
5	A	11	0	0	0	0
All	All	3609	0	3642	108	0

The all-atom clashscore is defined as the number of clashes found per 1000 atoms (including hydrogen atoms). The all-atom clashscore for this structure is 15.

All (108) close contacts within the same asymmetric unit are listed below, sorted by their clash magnitude.

Atom-1	Atom-2	Interatomic distance (Å)	Clash overlap (Å)
1:A:290:LEU:HD13	1:A:291:SER:N	1.41	1.34
1:A:257:LYS:H	1:A:258:GLU:HB2	1.04	1.17
1:A:257:LYS:HB3	1:A:258:GLU:HA	1.25	1.10
1:A:290:LEU:CD1	1:A:291:SER:N	2.21	1.04
1:A:290:LEU:CD1	1:A:291:SER:H	1.72	1.03
1:A:288:LYS:HB2	1:A:289:ALA:HB2	1.37	1.03
1:A:200:GLN:HG2	1:A:201:ASP:H	1.21	1.00
1:A:290:LEU:CD1	1:A:291:SER:O	2.21	0.89
1:A:288:LYS:CB	1:A:289:ALA:HB2	2.03	0.87
1:A:257:LYS:N	1:A:258:GLU:HB2	1.90	0.86
1:A:249:LEU:HA	1:A:252:SER:HB2	1.62	0.80
1:A:290:LEU:HD13	1:A:291:SER:H	0.76	0.79
1:A:200:GLN:CG	1:A:201:ASP:H	1.97	0.77
1:A:257:LYS:H	1:A:258:GLU:CB	1.92	0.77
1:A:200:GLN:HG2	1:A:201:ASP:N	1.99	0.76
1:A:257:LYS:CB	1:A:258:GLU:HA	2.08	0.75
1:A:288:LYS:CA	1:A:289:ALA:HB2	2.16	0.74
1:A:184:ILE:HG12	1:A:306:GLY:HA3	1.69	0.72
1:A:56:GLY:HA3	3:A:602:GOL:H31	1.71	0.71
1:A:421:LYS:HA	1:A:424:LYS:HG2	1.72	0.71
1:A:178:ALA:HB1	1:A:195:SER:O	1.92	0.69
2:A:601:HEM:HHD	2:A:601:HEM:HBC2	1.74	0.69
1:A:288:LYS:HB2	1:A:289:ALA:CB	2.19	0.67
1:A:257:LYS:HB3	1:A:258:GLU:CA	2.16	0.67
1:A:289:ALA:O	1:A:290:LEU:HB2	1.95	0.66
1:A:291:SER:OG	1:A:292:ASP:N	2.28	0.66
1:A:58:CYS:HB3	1:A:399:TYR:CD2	2.32	0.65
1:A:92:THR:HA	1:A:96:LYS:HB2	1.78	0.65
1:A:166:THR:O	1:A:168:LYS:N	2.31	0.63
1:A:288:LYS:HA	1:A:289:ALA:HB2	1.80	0.63
1:A:139:SER:HB3	1:A:446:ARG:HH22	1.65	0.60
1:A:256:MET:N	1:A:257:LYS:HA	2.16	0.60
1:A:290:LEU:HD11	1:A:291:SER:O	2.00	0.59
1:A:58:CYS:N	3:A:602:GOL:O3	2.35	0.59
1:A:226:PHE:HA	1:A:228:PHE:CE2	2.37	0.59
1:A:271:PHE:O	1:A:275:MET:HG3	2.03	0.58
1:A:253:VAL:HB	1:A:296:VAL:HG22	1.86	0.58
1:A:255:ARG:O	1:A:255:ARG:HG2	2.04	0.57
1:A:288:LYS:HD2	1:A:288:LYS:C	2.25	0.57
1:A:278:SER:O	1:A:290:LEU:CB	2.53	0.56
1:A:381:VAL:HG12	1:A:382:GLU:N	2.20	0.56
1:A:335:ILE:HD13	1:A:457:ILE:HA	1.87	0.55

Continued on next page...

Continued from previous page...

Atom-1	Atom-2	Interatomic distance (Å)	Clash overlap (Å)
1:A:172:LEU:HD11	1:A:491:LEU:HD12	1.89	0.55
1:A:101:VAL:O	1:A:378:LYS:HG2	2.07	0.54
1:A:278:SER:O	1:A:290:LEU:HB3	2.08	0.54
1:A:458:ARG:NH2	1:A:461:GLN:OE1	2.42	0.53
1:A:270:ASP:O	1:A:274:LEU:HG	2.09	0.53
1:A:101:VAL:HG11	1:A:381:VAL:HG21	1.90	0.52
1:A:381:VAL:HG12	1:A:383:ILE:HG23	1.91	0.52
1:A:272:LEU:O	1:A:276:ILE:HG13	2.11	0.51
1:A:113:PHE:HB2	1:A:293:LEU:HD21	1.92	0.51
1:A:276:ILE:HA	1:A:279:GLN:HB3	1.94	0.49
1:A:62[A]:MET:SD	1:A:400:ALA:HA	2.53	0.49
1:A:217:ASP:N	1:A:218:PRO:HD3	2.28	0.49
1:A:294:GLU:O	1:A:298:GLN:HG2	2.13	0.49
1:A:87:PRO:HG3	1:A:431:ILE:HD11	1.94	0.49
1:A:310:THR:HG21	1:A:451:ASN:ND2	2.28	0.48
1:A:119:SER:HB3	2:A:601:HEM:HAD1	1.96	0.48
1:A:257:LYS:CB	1:A:258:GLU:CA	2.86	0.48
1:A:381:VAL:CG1	1:A:382:GLU:N	2.76	0.48
1:A:188:SER:HB3	1:A:271:PHE:HB3	1.95	0.48
1:A:288:LYS:CA	1:A:289:ALA:CB	2.86	0.48
1:A:235:VAL:HG13	1:A:236:LEU:HD23	1.96	0.47
1:A:193:ILE:O	1:A:194:ASP:C	2.53	0.46
1:A:290:LEU:HD12	1:A:291:SER:O	2.14	0.46
1:A:188:SER:HB2	1:A:189:PHE:CE2	2.50	0.46
1:A:220:PHE:HA	1:A:223:ILE:HD12	1.97	0.46
1:A:252:SER:HA	1:A:255:ARG:HB3	1.98	0.46
1:A:182:ASP:O	1:A:186:SER:OG	2.34	0.45
1:A:32:LEU:HD11	1:A:389:PRO:HG3	1.99	0.45
1:A:229:LEU:O	1:A:232:ILE:HB	2.17	0.45
1:A:302:PHE:CD2	2:A:601:HEM:HBC1	2.51	0.45
1:A:248:PHE:C	1:A:249:LEU:HD12	2.37	0.45
1:A:277:ASP:OD1	1:A:277:ASP:N	2.49	0.45
1:A:56:GLY:HA3	3:A:602:GOL:C3	2.44	0.44
1:A:226:PHE:O	1:A:229:LEU:HB2	2.17	0.44
1:A:57:PHE:CE2	1:A:481:GLY:HA2	2.52	0.44
1:A:101:VAL:HA	1:A:378:LYS:HG2	1.99	0.44
1:A:57:PHE:HE2	1:A:481:GLY:HA2	1.83	0.44
1:A:143:LYS:HE2	1:A:143:LYS:HB2	1.76	0.44
1:A:330:LYS:HD3	1:A:355:TYR:CZ	2.53	0.44
1:A:470:GLU:H	1:A:470:GLU:HG2	1.64	0.43
1:A:345:PRO:HB3	1:A:457:ILE:HG21	2.00	0.43

Continued on next page...

Continued from previous page...

Atom-1	Atom-2	Interatomic distance (Å)	Clash overlap (Å)
1:A:305:ALA:HB1	2:A:601:HEM:C3C	2.54	0.43
1:A:244:GLU:H	1:A:244:GLU:HG2	1.65	0.43
1:A:220:PHE:O	1:A:223:ILE:HB	2.19	0.43
1:A:249:LEU:C	1:A:251:LYS:N	2.71	0.43
1:A:483:LEU:HD12	1:A:483:LEU:HA	1.86	0.42
1:A:232:ILE:O	1:A:235:VAL:HG12	2.19	0.42
1:A:356:LEU:HD21	1:A:453:LYS:HB3	2.00	0.42
1:A:477:LEU:HA	1:A:477:LEU:HD23	1.82	0.42
1:A:101:VAL:HG21	1:A:381:VAL:HG21	2.01	0.42
1:A:299:SER:O	1:A:303:ILE:HG13	2.20	0.42
1:A:52:SER:HB3	1:A:60:PHE:CD1	2.55	0.42
1:A:288:LYS:HA	1:A:289:ALA:CB	2.44	0.41
1:A:219:PHE:CD2	1:A:220:PHE:N	2.88	0.41
1:A:246:THR:O	1:A:250:ARG:N	2.47	0.41
1:A:137:PHE:CZ	1:A:302:PHE:CE2	3.09	0.41
1:A:381:VAL:CG1	1:A:383:ILE:CG2	2.98	0.41
1:A:428:ASP:HB3	1:A:431:ILE:HG12	2.03	0.41
1:A:458:ARG:HD2	1:A:458:ARG:HA	1.87	0.41
1:A:288:LYS:C	1:A:288:LYS:CD	2.86	0.41
1:A:245:VAL:O	1:A:248:PHE:HB3	2.22	0.40
1:A:442:CYS:HB2	2:A:601:HEM:C4A	2.57	0.40
1:A:449:LEU:O	1:A:453:LYS:HG3	2.21	0.40
1:A:478:SER:O	3:A:602:GOL:H2	2.22	0.40
1:A:381:VAL:HG12	1:A:383:ILE:CG2	2.52	0.40
1:A:415:LEU:O	1:A:418:ARG:HG3	2.22	0.40

There are no symmetry-related clashes.

5.3 Torsion angles [i](#)

5.3.1 Protein backbone [i](#)

In the following table, the Percentiles column shows the percent Ramachandran outliers of the chain as a percentile score with respect to all X-ray entries followed by that with respect to entries of similar resolution.

The Analysed column shows the number of residues for which the backbone conformation was analysed, and the total number of residues.

Mol	Chain	Analysed	Favoured	Allowed	Outliers	Percentiles
1	A	429/487 (88%)	387 (90%)	38 (9%)	4 (1%)	17 17

All (4) Ramachandran outliers are listed below:

Mol	Chain	Res	Type
1	A	218	PRO
1	A	167	GLY
1	A	289	ALA
1	A	290	LEU

5.3.2 Protein sidechains [i](#)

In the following table, the Percentiles column shows the percent sidechain outliers of the chain as a percentile score with respect to all X-ray entries followed by that with respect to entries of similar resolution.

The Analysed column shows the number of residues for which the sidechain conformation was analysed, and the total number of residues.

Mol	Chain	Analysed	Rotameric	Outliers	Percentiles
1	A	400/443 (90%)	382 (96%)	18 (4%)	27 33

All (18) residues with a non-rotameric sidechain are listed below:

Mol	Chain	Res	Type
1	A	127	LYS
1	A	158	ARG
1	A	163	GLU
1	A	182	ASP
1	A	184	ILE
1	A	186	SER
1	A	195	SER
1	A	197	ASN
1	A	219	PHE
1	A	220	PHE
1	A	221	LEU
1	A	252	SER
1	A	259	SER
1	A	288	LYS
1	A	290	LEU
1	A	446	ARG
1	A	458	ARG
1	A	468	CYS

Sometimes sidechains can be flipped to improve hydrogen bonding and reduce clashes. There are no such sidechains identified.

5.3.3 RNA [i](#)

There are no RNA molecules in this entry.

5.4 Non-standard residues in protein, DNA, RNA chains [i](#)

There are no non-standard protein/DNA/RNA residues in this entry.

5.5 Carbohydrates [i](#)

There are no monosaccharides in this entry.

5.6 Ligand geometry [i](#)

3 ligands are modelled in this entry.

In the following table, the Counts columns list the number of bonds (or angles) for which Mogul statistics could be retrieved, the number of bonds (or angles) that are observed in the model and the number of bonds (or angles) that are defined in the Chemical Component Dictionary. The Link column lists molecule types, if any, to which the group is linked. The Z score for a bond length (or angle) is the number of standard deviations the observed value is removed from the expected value. A bond length (or angle) with $|Z| > 2$ is considered an outlier worth inspection. RMSZ is the root-mean-square of all Z scores of the bond lengths (or angles).

Mol	Type	Chain	Res	Link	Bond lengths			Bond angles		
					Counts	RMSZ	# Z > 2	Counts	RMSZ	# Z > 2
2	HEM	A	601	1,4	41,50,50	1.63	4 (9%)	45,82,82	1.76	13 (28%)
3	GOL	A	602	-	5,5,5	0.37	0	5,5,5	0.43	0
4	G0V	A	603	2	38,39,39	2.27	11 (28%)	44,51,51	2.58	11 (25%)

In the following table, the Chirals column lists the number of chiral outliers, the number of chiral centers analysed, the number of these observed in the model and the number defined in the Chemical Component Dictionary. Similar counts are reported in the Torsion and Rings columns. '-' means no outliers of that kind were identified.

Mol	Type	Chain	Res	Link	Chirals	Torsions	Rings
2	HEM	A	601	1,4	-	1/12/54/54	-
3	GOL	A	602	-	-	0/4/4/4	-
4	G0V	A	603	2	-	13/32/32/32	0/3/3/3

All (15) bond length outliers are listed below:

Mol	Chain	Res	Type	Atoms	Z	Observed(Å)	Ideal(Å)
4	A	603	G0V	C12-S11	7.05	1.90	1.83
4	A	603	G0V	C12-C20	6.06	1.61	1.52
2	A	601	HEM	C3C-C2C	-4.69	1.33	1.40
4	A	603	G0V	C10-S11	4.67	1.86	1.82
4	A	603	G0V	C31-C09	4.32	1.63	1.53
4	A	603	G0V	C20-N22	4.03	1.42	1.33
2	A	601	HEM	C3C-CAC	3.96	1.55	1.47
2	A	601	HEM	CAB-C3B	3.34	1.56	1.47
4	A	603	G0V	C31-C32	2.40	1.57	1.51
4	A	603	G0V	C24-C25	-2.28	1.45	1.51
4	A	603	G0V	C03-C02	2.22	1.57	1.51
2	A	601	HEM	CMB-C2B	2.21	1.55	1.50
4	A	603	G0V	O07-C06	2.18	1.25	1.21
4	A	603	G0V	O21-C20	2.17	1.27	1.23
4	A	603	G0V	C23-N22	2.16	1.51	1.46

All (24) bond angle outliers are listed below:

Mol	Chain	Res	Type	Atoms	Z	Observed(°)	Ideal(°)
4	A	603	G0V	O05-C06-N08	8.53	124.34	110.02
4	A	603	G0V	C14-C13-C12	7.59	124.20	113.32
4	A	603	G0V	O07-C06-N08	-5.41	115.99	124.85
4	A	603	G0V	C24-C23-N22	4.51	125.62	111.99
2	A	601	HEM	C4D-ND-C1D	4.41	109.63	105.07
4	A	603	G0V	O21-C20-N22	-4.39	113.56	122.99
4	A	603	G0V	C32-C31-C09	4.09	123.07	113.78
2	A	601	HEM	CBA-CAA-C2A	-3.55	106.56	112.62
4	A	603	G0V	C23-N22-C20	3.31	128.48	122.59
4	A	603	G0V	O05-C06-O07	-3.27	119.66	125.62
2	A	601	HEM	C1B-NB-C4B	3.18	108.36	105.07
2	A	601	HEM	C3D-C4D-ND	-3.13	106.68	110.17
2	A	601	HEM	C4C-CHD-C1D	3.11	126.67	122.56
4	A	603	G0V	C23-C24-C25	2.85	119.48	112.87
4	A	603	G0V	C28-N29-C30	2.76	121.62	116.85
2	A	601	HEM	CMA-C3A-C4A	-2.67	124.37	128.46
2	A	601	HEM	C4B-CHC-C1C	2.57	125.95	122.56
2	A	601	HEM	CAD-CBD-CGD	-2.57	108.07	113.60
2	A	601	HEM	CHD-C1D-ND	2.37	127.01	124.43
4	A	603	G0V	C26-C27-C28	-2.34	115.44	118.91
2	A	601	HEM	CHA-C4D-ND	2.33	127.26	124.38
2	A	601	HEM	C3B-C2B-C1B	2.33	108.21	106.49
2	A	601	HEM	C2D-C1D-ND	-2.26	107.17	109.88
2	A	601	HEM	C2C-C3C-C4C	2.04	108.33	106.90

There are no chirality outliers.

All (14) torsion outliers are listed below:

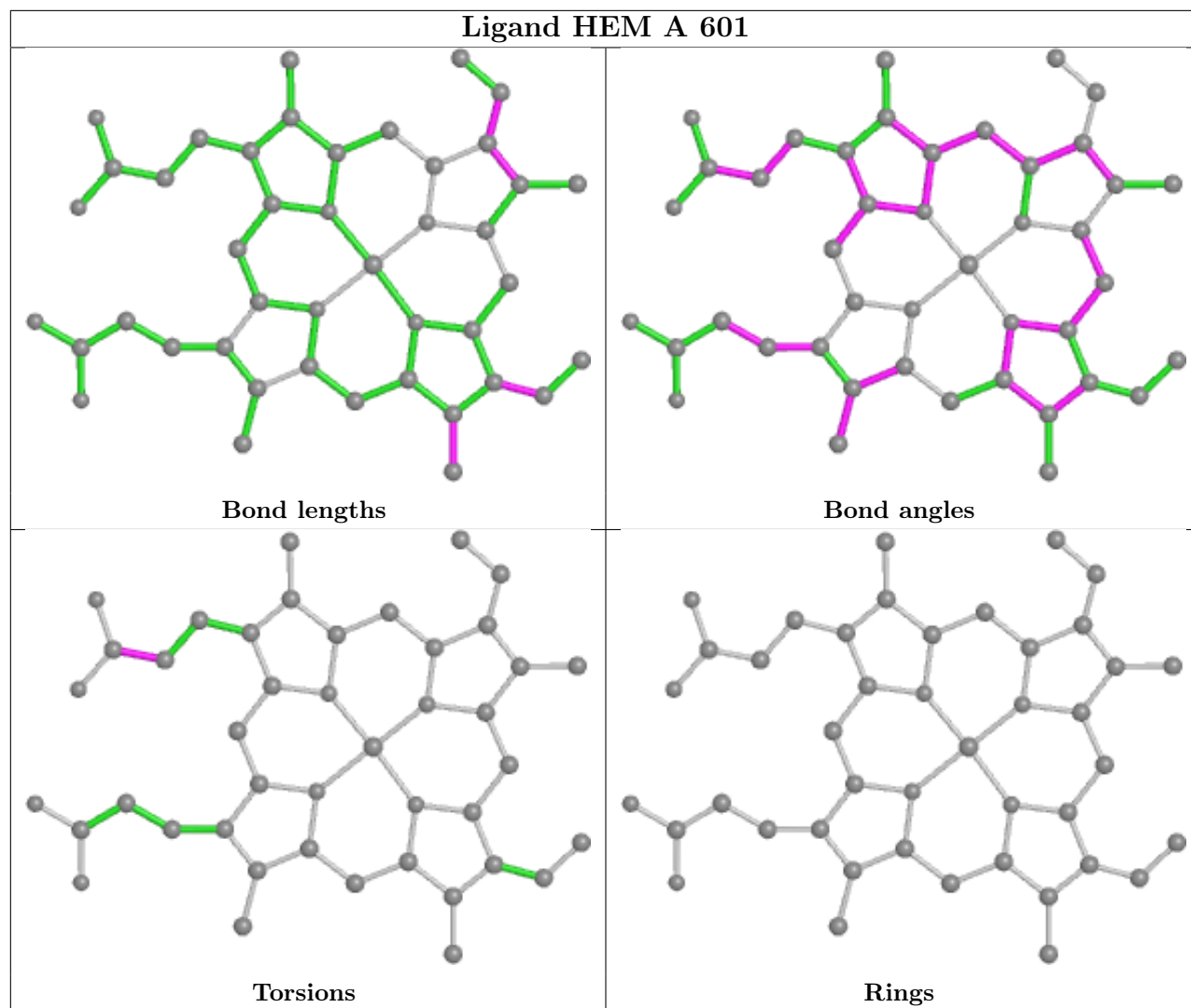
Mol	Chain	Res	Type	Atoms
4	A	603	G0V	N08-C06-O05-C02
4	A	603	G0V	C10-C09-C31-C32
4	A	603	G0V	C20-C12-C13-C14
4	A	603	G0V	S11-C12-C20-N22
4	A	603	G0V	C13-C12-S11-C10
4	A	603	G0V	O07-C06-O05-C02
4	A	603	G0V	N08-C09-C31-C32
4	A	603	G0V	C12-C13-C14-C15
4	A	603	G0V	C12-C13-C14-C19
4	A	603	G0V	N22-C23-C24-C25
4	A	603	G0V	C20-C12-S11-C10
4	A	603	G0V	C09-C10-S11-C12
2	A	601	HEM	CAD-CBD-CGD-O1D
4	A	603	G0V	S11-C12-C20-O21

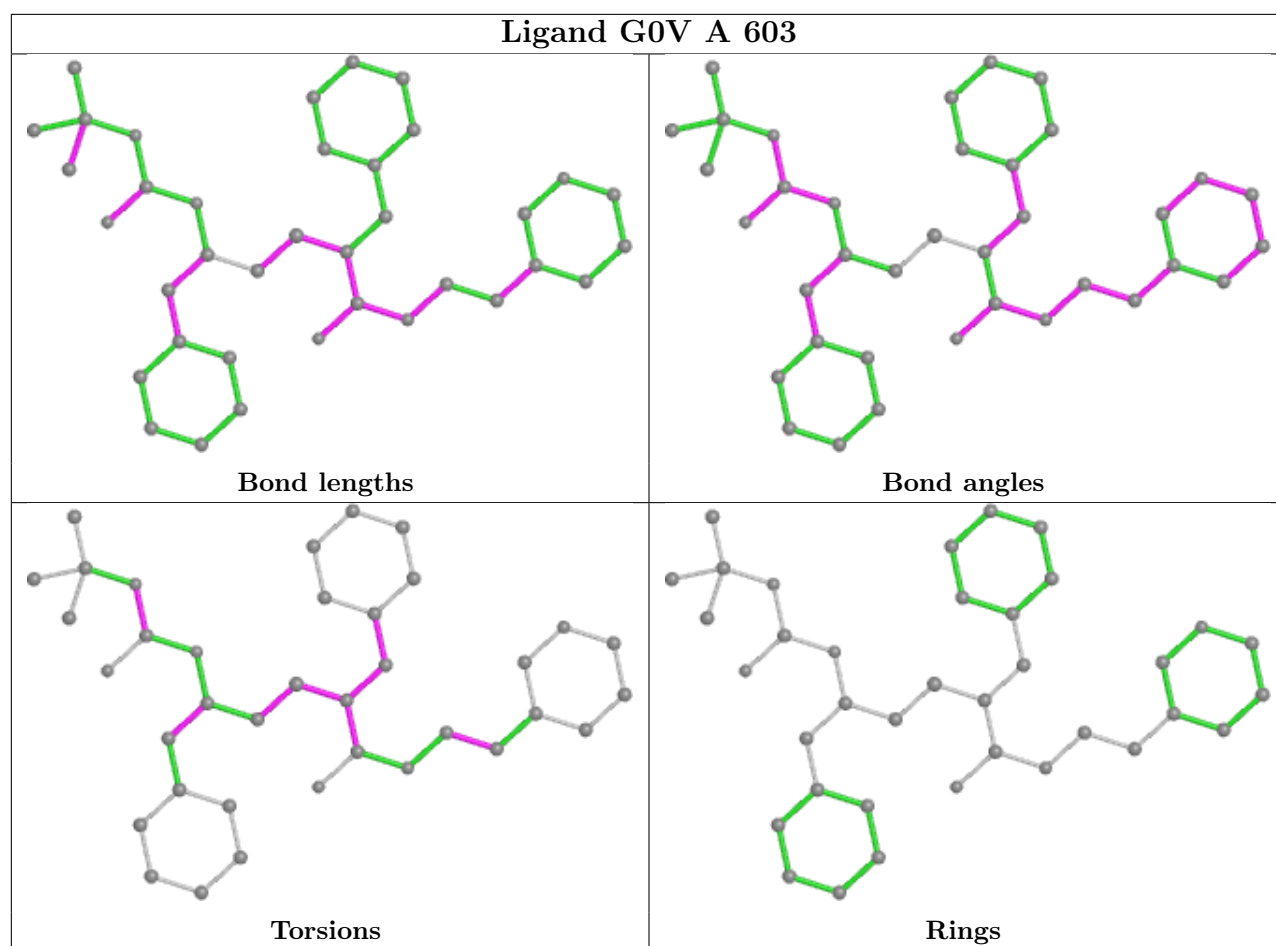
There are no ring outliers.

2 monomers are involved in 9 short contacts:

Mol	Chain	Res	Type	Clashes	Symm-Clashes
2	A	601	HEM	5	0
3	A	602	GOL	4	0

The following is a two-dimensional graphical depiction of Mogul quality analysis of bond lengths, bond angles, torsion angles, and ring geometry for all instances of the Ligand of Interest. In addition, ligands with molecular weight > 250 and outliers as shown on the validation Tables will also be included. For torsion angles, if less than 5% of the Mogul distribution of torsion angles is within 10 degrees of the torsion angle in question, then that torsion angle is considered an outlier. Any bond that is central to one or more torsion angles identified as an outlier by Mogul will be highlighted in the graph. For rings, the root-mean-square deviation (RMSD) between the ring in question and similar rings identified by Mogul is calculated over all ring torsion angles. If the average RMSD is greater than 60 degrees and the minimal RMSD between the ring in question and any Mogul-identified rings is also greater than 60 degrees, then that ring is considered an outlier. The outliers are highlighted in purple. The color gray indicates Mogul did not find sufficient equivalents in the CSD to analyse the geometry.





5.7 Other polymers [i](#)

There are no such residues in this entry.

5.8 Polymer linkage issues [i](#)

There are no chain breaks in this entry.

6 Fit of model and data

6.1 Protein, DNA and RNA chains

In the following table, the column labelled ‘#RSRZ> 2’ contains the number (and percentage) of RSRZ outliers, followed by percent RSRZ outliers for the chain as percentile scores relative to all X-ray entries and entries of similar resolution. The OWAB column contains the minimum, median, 95th percentile and maximum values of the occupancy-weighted average B-factor per residue. The column labelled ‘Q< 0.9’ lists the number of (and percentage) of residues with an average occupancy less than 0.9.

Mol	Chain	Analysed	<RSRZ>	#RSRZ>2	OWAB(Å ²)	Q<0.9
1	A	436/487 (89%)	0.54	47 (10%) 5 9	60, 106, 172, 226	0

All (47) RSRZ outliers are listed below:

Mol	Chain	Res	Type	RSRZ
1	A	203	PHE	5.5
1	A	226	PHE	5.4
1	A	276	ILE	4.4
1	A	152	TYR	4.4
1	A	255	ARG	4.4
1	A	406	LYS	4.3
1	A	493	VAL	4.1
1	A	491	LEU	4.0
1	A	259	SER	4.0
1	A	279	GLN	3.8
1	A	191	VAL	3.8
1	A	275	MET	3.8
1	A	271	PHE	3.8
1	A	278	SER	3.7
1	A	217	ASP	3.7
1	A	221	LEU	3.5
1	A	189	PHE	3.4
1	A	253	VAL	3.3
1	A	254	LYS	3.2
1	A	244	GLU	3.2
1	A	463	PHE	3.2
1	A	290	LEU	2.9
1	A	225	VAL	2.9
1	A	256	MET	2.9
1	A	288	LYS	2.8
1	A	295	LEU	2.8
1	A	487	LYS	2.8

Continued on next page...

Continued from previous page...

Mol	Chain	Res	Type	RSRZ
1	A	243	ARG	2.7
1	A	489	VAL	2.7
1	A	482	LEU	2.7
1	A	200	GLN	2.7
1	A	494	GLU	2.7
1	A	490	VAL	2.7
1	A	170	VAL	2.6
1	A	201	ASP	2.6
1	A	442	CYS	2.5
1	A	270	ASP	2.5
1	A	272	LEU	2.5
1	A	280	ASN	2.4
1	A	137	PHE	2.3
1	A	197	ASN	2.2
1	A	46	PHE	2.1
1	A	181	MET	2.1
1	A	258	GLU	2.1
1	A	335	ILE	2.1
1	A	171	THR	2.0
1	A	277	ASP	2.0

6.2 Non-standard residues in protein, DNA, RNA chains [i](#)

There are no non-standard protein/DNA/RNA residues in this entry.

6.3 Carbohydrates [i](#)

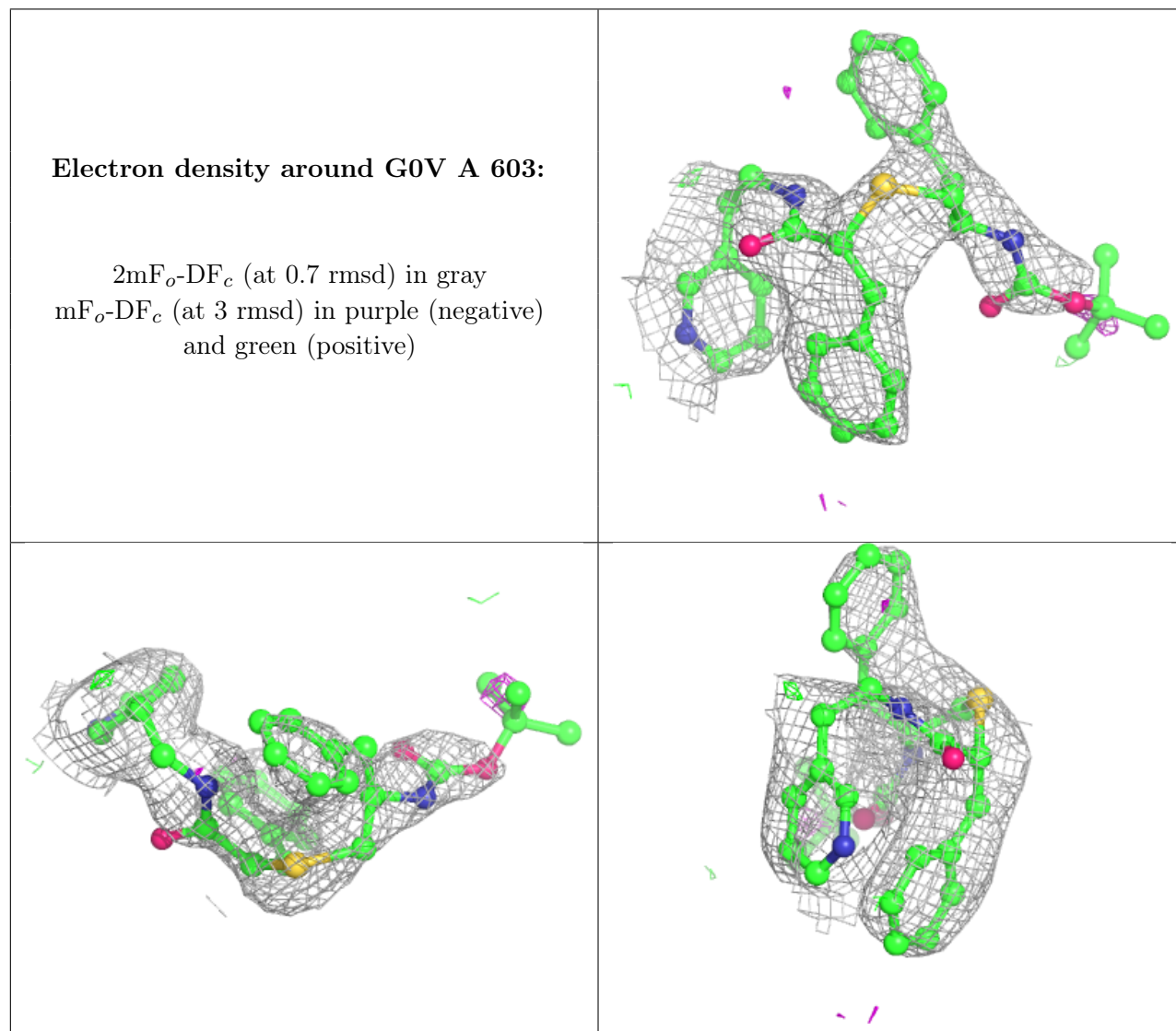
There are no monosaccharides in this entry.

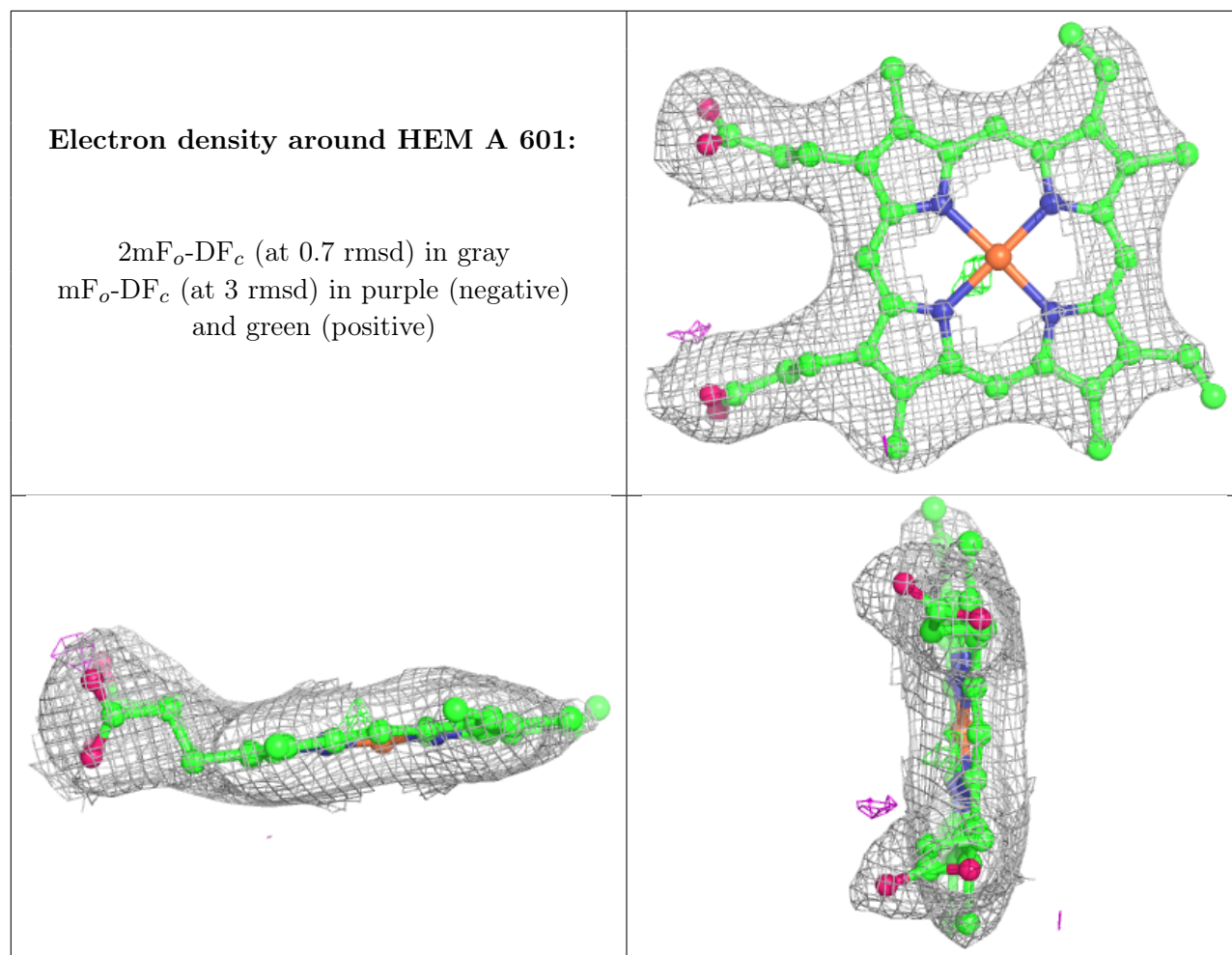
6.4 Ligands [i](#)

In the following table, the Atoms column lists the number of modelled atoms in the group and the number defined in the chemical component dictionary. The B-factors column lists the minimum, median, 95th percentile and maximum values of B factors of atoms in the group. The column labelled 'Q< 0.9' lists the number of atoms with occupancy less than 0.9.

Mol	Type	Chain	Res	Atoms	RSCC	RSR	B-factors(Å ²)	Q<0.9
4	G0V	A	603	37/37	0.90	0.30	69,121,186,188	0
3	GOL	A	602	6/6	0.97	0.24	124,137,140,140	0
2	HEM	A	601	43/43	0.98	0.22	58,71,81,87	0

The following is a graphical depiction of the model fit to experimental electron density of all instances of the Ligand of Interest. In addition, ligands with molecular weight > 250 and outliers as shown on the geometry validation Tables will also be included. Each fit is shown from different orientation to approximate a three-dimensional view.





6.5 Other polymers [i](#)

There are no such residues in this entry.