



# Full wwPDB X-ray Structure Validation Report ⓘ

Jun 24, 2024 – 08:39 AM EDT

PDB ID : 6ETJ  
Title : HUMAN PFKFB3 IN COMPLEX WITH KAN0438241  
Authors : Gustafsson, N.M.S.; Lundback, T.; Farnegardh, K.; Groth, P.; Wiitta, E.;  
Jonsson, M.; Hallberg, K.; Pennisi, R.; Huguet Ninou, A.; Martinsson, J.;  
Norstrom, C.; Schultz, J.; Andersson, M.; Markova, N.; Marttila, P.; Norin,  
M.; Olin, T.; Helleday, T.  
Deposited on : 2017-10-26  
Resolution : 2.51 Å(reported)

This is a Full wwPDB X-ray Structure Validation Report for a publicly released PDB entry.

We welcome your comments at [validation@mail.wwpdb.org](mailto:validation@mail.wwpdb.org)

A user guide is available at

<https://www.wwpdb.org/validation/2017/XrayValidationReportHelp>

with specific help available everywhere you see the ⓘ symbol.

The types of validation reports are described at

<http://www.wwpdb.org/validation/2017/FAQs#types>.

---

The following versions of software and data (see [references](#) ①) were used in the production of this report:

MolProbity : 4.02b-467  
Mogul : 1.8.5 (274361), CSD as541be (2020)  
Xtrriage (Phenix) : 1.13  
EDS : 2.37.1  
buster-report : 1.1.7 (2018)  
Percentile statistics : 20191225.v01 (using entries in the PDB archive December 25th 2019)  
Refmac : 5.8.0158  
CCP4 : 7.0.044 (Gargrove)  
Ideal geometry (proteins) : Engh & Huber (2001)  
Ideal geometry (DNA, RNA) : Parkinson et al. (1996)  
Validation Pipeline (wwPDB-VP) : 2.37.1

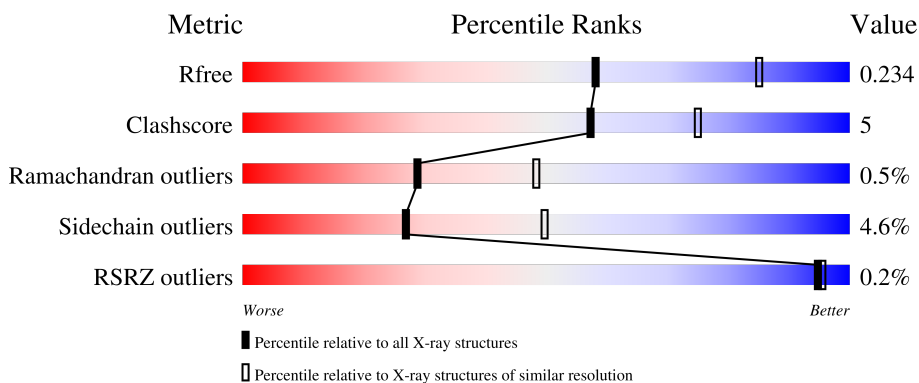
# 1 Overall quality at a glance i

The following experimental techniques were used to determine the structure:

*X-RAY DIFFRACTION*

The reported resolution of this entry is 2.51 Å.

Percentile scores (ranging between 0-100) for global validation metrics of the entry are shown in the following graphic. The table shows the number of entries on which the scores are based.



Metric	Whole archive (#Entries)	Similar resolution (#Entries, resolution range(Å))
$R_{free}$	130704	4661 (2.50-2.50)
Clashscore	141614	5346 (2.50-2.50)
Ramachandran outliers	138981	5231 (2.50-2.50)
Sidechain outliers	138945	5233 (2.50-2.50)
RSRZ outliers	127900	4559 (2.50-2.50)

The table below summarises the geometric issues observed across the polymeric chains and their fit to the electron density. The red, orange, yellow and green segments of the lower bar indicate the fraction of residues that contain outliers for  $\geq 3$ , 2, 1 and 0 types of geometric quality criteria respectively. A grey segment represents the fraction of residues that are not modelled. The numeric value for each fraction is indicated below the corresponding segment, with a dot representing fractions  $\leq 5\%$ . The upper red bar (where present) indicates the fraction of residues that have poor fit to the electron density. The numeric value is given above the bar.

Mol	Chain	Length	Quality of chain
1	A	520	 70% 11% • 17%

## 2 Entry composition [i](#)

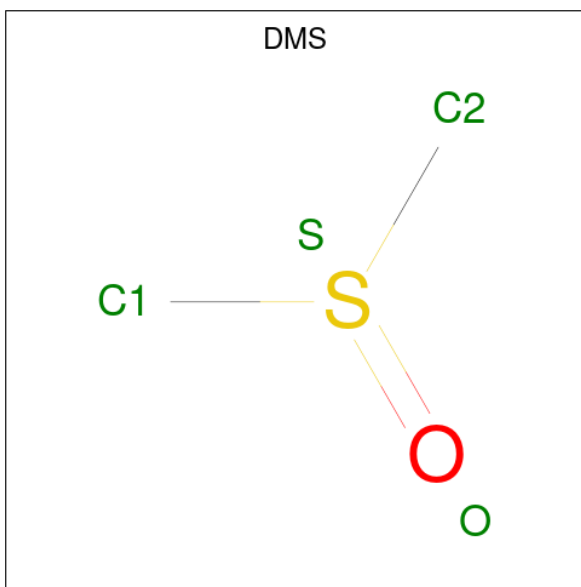
There are 6 unique types of molecules in this entry. The entry contains 3736 atoms, of which 0 are hydrogens and 0 are deuteriums.

In the tables below, the ZeroOcc column contains the number of atoms modelled with zero occupancy, the AltConf column contains the number of residues with at least one atom in alternate conformation and the Trace column contains the number of residues modelled with at most 2 atoms.

- Molecule 1 is a protein called 6-phosphofructo-2-kinase/fructose-2,6-bisphosphatase 3.

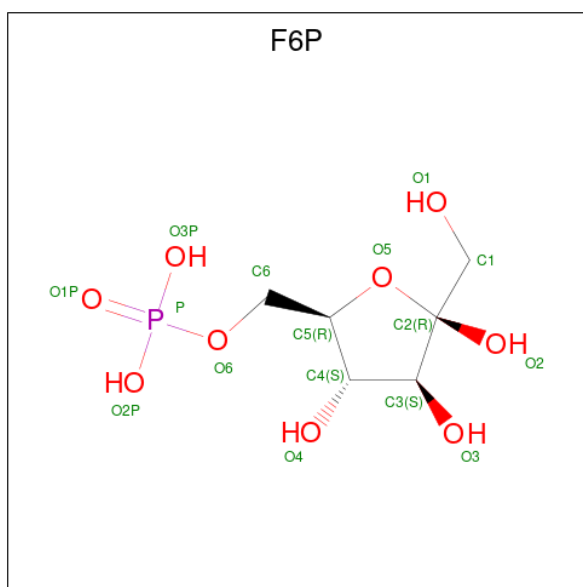
Mol	Chain	Residues	Atoms							ZeroOcc	AltConf	Trace
			Total	C	N	O	P	S				
1	A	432	3559	2249	623	663	1	23	0	5	0	

- Molecule 2 is DIMETHYL SULFOXIDE (three-letter code: DMS) (formula: C<sub>2</sub>H<sub>6</sub>OS).



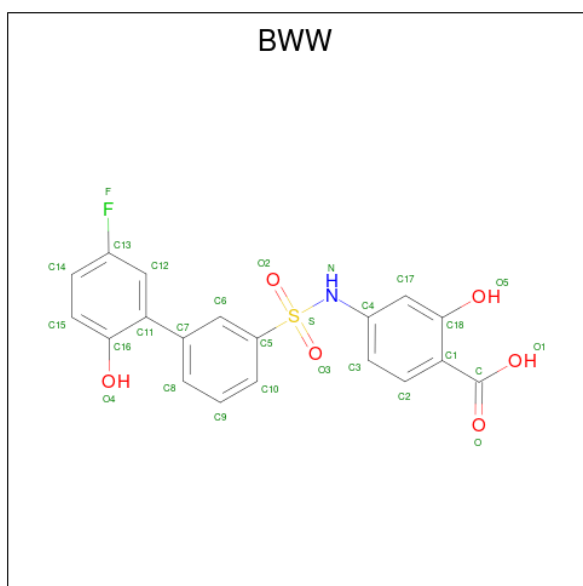
Mol	Chain	Residues	Atoms				ZeroOcc	AltConf
			Total	C	O	S		
2	A	1	4	2	1	1	0	0

- Molecule 3 is 6-O-phosphono-beta-D-fructofuranose (three-letter code: F6P) (formula: C<sub>6</sub>H<sub>13</sub>O<sub>9</sub>P).



Mol	Chain	Residues	Atoms				ZeroOcc	AltConf
3	A	1	Total	C	O	P	0	0
			16	6	9	1		

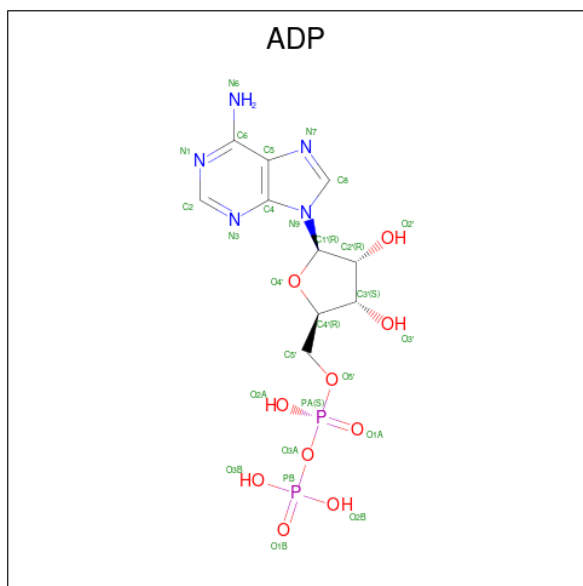
- Molecule 4 is 4-[[3-(5-fluoranyl-2-oxidanyl-phenyl)phenyl]sulfonylamino]-2-oxidanyl-benzoic acid (three-letter code: BWB) (formula:  $C_{19}H_{14}FNO_6S$ ) (labeled as "Ligand of Interest" by depositor).



Mol	Chain	Residues	Atoms					ZeroOcc	AltConf	
4	A	1	Total	C	F	N	O	S	0	0
			28	19	1	1	6	1		

- Molecule 5 is ADENOSINE-5'-DIPHOSPHATE (three-letter code: ADP) (formula:

C<sub>10</sub>H<sub>15</sub>N<sub>5</sub>O<sub>10</sub>P<sub>2</sub>).



Mol	Chain	Residues	Atoms					ZeroOcc	AltConf
			Total	C	N	O	P		
5	A	1	27	10	5	10	2	0	0

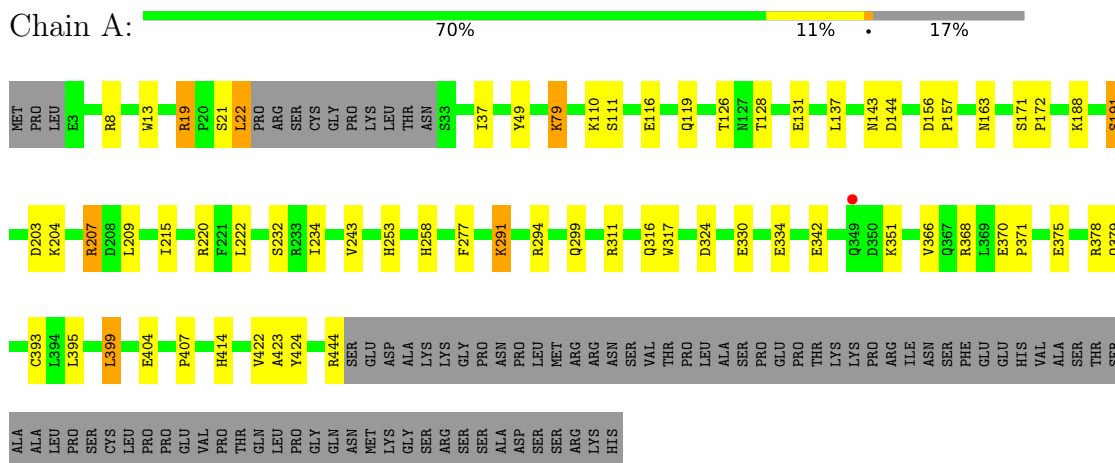
- Molecule 6 is water.

Mol	Chain	Residues	Atoms		ZeroOcc	AltConf
			Total	O		
6	A	102	102	102	0	0

### 3 Residue-property plots [i](#)

These plots are drawn for all protein, RNA, DNA and oligosaccharide chains in the entry. The first graphic for a chain summarises the proportions of the various outlier classes displayed in the second graphic. The second graphic shows the sequence view annotated by issues in geometry and electron density. Residues are color-coded according to the number of geometric quality criteria for which they contain at least one outlier: green = 0, yellow = 1, orange = 2 and red = 3 or more. A red dot above a residue indicates a poor fit to the electron density ( $RSRZ > 2$ ). Stretches of 2 or more consecutive residues without any outlier are shown as a green connector. Residues present in the sample, but not in the model, are shown in grey.

- Molecule 1: 6-phosphofructo-2-kinase/fructose-2,6-bisphosphatase 3



## 4 Data and refinement statistics

Property	Value	Source
Space group	P 65 2 2	Depositor
Cell constants a, b, c, $\alpha$ , $\beta$ , $\gamma$	103.77Å 103.77Å 259.56Å 90.00° 90.00° 120.00°	Depositor
Resolution (Å)	34.28 – 2.51 34.28 – 2.51	Depositor EDS
% Data completeness (in resolution range)	99.5 (34.28-2.51) 99.6 (34.28-2.51)	Depositor EDS
$R_{merge}$	0.10	Depositor
$R_{sym}$	(Not available)	Depositor
$\langle I/\sigma(I) \rangle$ <sup>1</sup>	2.16 (at 2.51Å)	Xtrriage
Refinement program	REFMAC 5.6.0117	Depositor
R, $R_{free}$	0.192 , 0.235 0.192 , 0.234	Depositor DCC
$R_{free}$ test set	1453 reflections (5.00%)	wwPDB-VP
Wilson B-factor (Å <sup>2</sup> )	40.5	Xtrriage
Anisotropy	0.455	Xtrriage
Bulk solvent $k_{sol}$ (e/Å <sup>3</sup> ), $B_{sol}$ (Å <sup>2</sup> )	0.34 , 34.5	EDS
L-test for twinning <sup>2</sup>	$\langle  L  \rangle = 0.50$ , $\langle L^2 \rangle = 0.33$	Xtrriage
Estimated twinning fraction	No twinning to report.	Xtrriage
$F_o, F_c$ correlation	0.95	EDS
Total number of atoms	3736	wwPDB-VP
Average B, all atoms (Å <sup>2</sup> )	42.0	wwPDB-VP

Xtrriage's analysis on translational NCS is as follows: *The largest off-origin peak in the Patterson function is 3.80% of the height of the origin peak. No significant pseudotranslation is detected.*

<sup>1</sup>Intensities estimated from amplitudes.

<sup>2</sup>Theoretical values of  $\langle |L| \rangle$ ,  $\langle L^2 \rangle$  for acentric reflections are 0.5, 0.333 respectively for untwinned datasets, and 0.375, 0.2 for perfectly twinned datasets.



## 5 Model quality [i](#)

### 5.1 Standard geometry [i](#)

Bond lengths and bond angles in the following residue types are not validated in this section: NEP, BWV, F6P, ADP, DMS

The Z score for a bond length (or angle) is the number of standard deviations the observed value is removed from the expected value. A bond length (or angle) with  $|Z| > 5$  is considered an outlier worth inspection. RMSZ is the root-mean-square of all Z scores of the bond lengths (or angles).

Mol	Chain	Bond lengths		Bond angles	
		RMSZ	# $ Z  > 5$	RMSZ	# $ Z  > 5$
1	A	0.66	2/3630 (0.1%)	0.77	1/4904 (0.0%)

Chiral center outliers are detected by calculating the chiral volume of a chiral center and verifying if the center is modelled as a planar moiety or with the opposite hand. A planarity outlier is detected by checking planarity of atoms in a peptide group, atoms in a mainchain group or atoms of a sidechain that are expected to be planar.

Mol	Chain	#Chirality outliers	#Planarity outliers
1	A	0	1

All (2) bond length outliers are listed below:

Mol	Chain	Res	Type	Atoms	Z	Observed(Å)	Ideal(Å)
1	A	13	TRP	CD2-CE2	6.33	1.49	1.41
1	A	317	TRP	CD2-CE2	5.61	1.48	1.41

All (1) bond angle outliers are listed below:

Mol	Chain	Res	Type	Atoms	Z	Observed(°)	Ideal(°)
1	A	324	ASP	CB-CG-OD1	5.64	123.37	118.30

There are no chirality outliers.

All (1) planarity outliers are listed below:

Mol	Chain	Res	Type	Group
1	A	21	SER	Peptide

## 5.2 Too-close contacts

In the following table, the Non-H and H(model) columns list the number of non-hydrogen atoms and hydrogen atoms in the chain respectively. The H(added) column lists the number of hydrogen atoms added and optimized by MolProbity. The Clashes column lists the number of clashes within the asymmetric unit, whereas Symm-Clashes lists symmetry-related clashes.

Mol	Chain	Non-H	H(model)	H(added)	Clashes	Symm-Clashes
1	A	3559	0	3549	33	0
2	A	4	0	6	2	0
3	A	16	0	11	0	0
4	A	28	0	0	0	0
5	A	27	0	12	4	0
6	A	102	0	0	7	0
All	All	3736	0	3578	35	0

The all-atom clashscore is defined as the number of clashes found per 1000 atoms (including hydrogen atoms). The all-atom clashscore for this structure is 5.

All (35) close contacts within the same asymmetric unit are listed below, sorted by their clash magnitude.

Atom-1	Atom-2	Interatomic distance (Å)	Clash overlap (Å)
2:A:601:DMS:H11	6:A:754:HOH:O	1.83	0.78
1:A:370:GLU:HB3	6:A:728:HOH:O	1.89	0.72
1:A:351:LYS:HD3	1:A:407:PRO:HB2	1.75	0.66
2:A:601:DMS:H12	6:A:767:HOH:O	1.94	0.66
1:A:299:GLN:HG2	1:A:316:GLN:HE21	1.64	0.61
1:A:366:VAL:HG22	1:A:393[B]:CYS:SG	2.45	0.57
1:A:342:GLU:HB3	6:A:782:HOH:O	2.08	0.52
1:A:163:ASN:HD21	5:A:604:ADP:H1'	1.75	0.51
1:A:422:VAL:HG12	1:A:423:ALA:N	2.25	0.51
1:A:424:TYR:OH	5:A:604:ADP:O2A	2.27	0.50
1:A:171:SER:HB2	1:A:172:PRO:CD	2.42	0.49
1:A:188:LYS:O	1:A:191:SER:HB2	2.11	0.49
1:A:258:HIS:HE1	1:A:330:GLU:OE2	1.95	0.49
1:A:19:ARG:NH1	6:A:705:HOH:O	2.46	0.48
1:A:8:ARG:HH11	1:A:342:GLU:HG3	1.79	0.48
1:A:111:SER:O	1:A:116:GLU:HG3	2.15	0.47
1:A:49:TYR:HB2	5:A:604:ADP:H5'2	1.97	0.47
1:A:422:VAL:CG1	1:A:423:ALA:N	2.78	0.47
1:A:110:LYS:HD2	1:A:143:ASN:OD1	2.15	0.46
1:A:395:LEU:HG	1:A:399:LEU:HD22	1.98	0.46
1:A:156:ASP:HA	1:A:157:PRO:HD2	1.81	0.46

*Continued on next page...*

Continued from previous page...

Atom-1	Atom-2	Interatomic distance (Å)	Clash overlap (Å)
1:A:163:ASN:ND2	5:A:604:ADP:H1'	2.30	0.46
1:A:291:LYS:HB3	6:A:746:HOH:O	2.17	0.44
1:A:375:GLU:OE1	1:A:378[B]:ARG:NH2	2.51	0.43
1:A:22:LEU:C	1:A:22:LEU:CD1	2.86	0.43
1:A:277:PHE:CE1	1:A:414:HIS:HA	2.53	0.43
1:A:215:ILE:HB	1:A:220:ARG:HB3	2.01	0.42
1:A:137:LEU:HD21	1:A:209:LEU:HD21	2.01	0.42
1:A:204:LYS:O	1:A:207:ARG:HB2	2.19	0.42
1:A:8:ARG:HG2	6:A:720:HOH:O	2.20	0.41
1:A:126:THR:HB	1:A:128:THR:HG23	2.03	0.41
1:A:294:ARG:HG3	1:A:379:GLN:OE1	2.20	0.41
1:A:366:VAL:CG2	1:A:393[B]:CYS:SG	3.09	0.41
1:A:370:GLU:HB2	1:A:371:PRO:HD3	2.04	0.40
1:A:37:ILE:HD11	1:A:234:ILE:HD13	2.02	0.40

There are no symmetry-related clashes.

## 5.3 Torsion angles [i](#)

### 5.3.1 Protein backbone [i](#)

In the following table, the Percentiles column shows the percent Ramachandran outliers of the chain as a percentile score with respect to all X-ray entries followed by that with respect to entries of similar resolution.

The Analysed column shows the number of residues for which the backbone conformation was analysed, and the total number of residues.

Mol	Chain	Analysed	Favoured	Allowed	Outliers	Percentiles
1	A	432/520 (83%)	411 (95%)	19 (4%)	2 (0%)	29   48

All (2) Ramachandran outliers are listed below:

Mol	Chain	Res	Type
1	A	207	ARG
1	A	79	LYS

### 5.3.2 Protein sidechains

In the following table, the Percentiles column shows the percent sidechain outliers of the chain as a percentile score with respect to all X-ray entries followed by that with respect to entries of similar resolution.

The Analysed column shows the number of residues for which the sidechain conformation was analysed, and the total number of residues.

Mol	Chain	Analysed	Rotameric	Outliers	Percentiles
1	A	394/467 (84%)	375 (95%)	19 (5%)	<span style="border: 1px solid red; padding: 2px;">25</span> <span style="border: 1px solid gray; padding: 2px;">48</span>

All (19) residues with a non-rotameric sidechain are listed below:

Mol	Chain	Res	Type
1	A	19	ARG
1	A	22	LEU
1	A	79	LYS
1	A	119	GLN
1	A	131[A]	GLU
1	A	131[B]	GLU
1	A	144	ASP
1	A	191	SER
1	A	203	ASP
1	A	222	LEU
1	A	232	SER
1	A	243	VAL
1	A	291	LYS
1	A	311	ARG
1	A	334	GLU
1	A	368	ARG
1	A	399	LEU
1	A	404	GLU
1	A	444	ARG

Sometimes sidechains can be flipped to improve hydrogen bonding and reduce clashes. All (6) such sidechains are listed below:

Mol	Chain	Res	Type
1	A	163	ASN
1	A	227	GLN
1	A	258	HIS
1	A	289	ASN
1	A	316	GLN
1	A	363	GLN

### 5.3.3 RNA [i](#)

There are no RNA molecules in this entry.

## 5.4 Non-standard residues in protein, DNA, RNA chains [i](#)

1 non-standard protein/DNA/RNA residue is modelled in this entry.

In the following table, the Counts columns list the number of bonds (or angles) for which Mogul statistics could be retrieved, the number of bonds (or angles) that are observed in the model and the number of bonds (or angles) that are defined in the Chemical Component Dictionary. The Link column lists molecule types, if any, to which the group is linked. The Z score for a bond length (or angle) is the number of standard deviations the observed value is removed from the expected value. A bond length (or angle) with  $|Z| > 2$  is considered an outlier worth inspection. RMSZ is the root-mean-square of all Z scores of the bond lengths (or angles).

Mol	Type	Chain	Res	Link	Bond lengths			Bond angles		
					Counts	RMSZ	# Z  > 2	Counts	RMSZ	# Z  > 2
1	NEP	A	253	1	10,14,15	5.27	5 (50%)	5,20,22	1.78	1 (20%)

In the following table, the Chirals column lists the number of chiral outliers, the number of chiral centers analysed, the number of these observed in the model and the number defined in the Chemical Component Dictionary. Similar counts are reported in the Torsion and Rings columns. '-' means no outliers of that kind were identified.

Mol	Type	Chain	Res	Link	Chirals	Torsions	Rings
1	NEP	A	253	1	-	2/5/12/14	0/1/1/1

All (5) bond length outliers are listed below:

Mol	Chain	Res	Type	Atoms	Z	Observed(Å)	Ideal(Å)
1	A	253	NEP	P-O3P	15.33	1.60	1.47
1	A	253	NEP	P-O2P	-3.55	1.47	1.54
1	A	253	NEP	P-O1P	3.29	1.61	1.54
1	A	253	NEP	CD2-CG	2.90	1.40	1.36
1	A	253	NEP	CD2-NE2	-2.82	1.34	1.39

All (1) bond angle outliers are listed below:

Mol	Chain	Res	Type	Atoms	Z	Observed(°)	Ideal(°)
1	A	253	NEP	O2P-P-O3P	-3.13	106.67	113.44

There are no chirality outliers.

All (2) torsion outliers are listed below:

Mol	Chain	Res	Type	Atoms
1	A	253	NEP	O-C-CA-CB
1	A	253	NEP	CA-CB-CG-ND1

There are no ring outliers.

No monomer is involved in short contacts.

## 5.5 Carbohydrates [i](#)

There are no monosaccharides in this entry.

## 5.6 Ligand geometry [i](#)

4 ligands are modelled in this entry.

In the following table, the Counts columns list the number of bonds (or angles) for which Mogul statistics could be retrieved, the number of bonds (or angles) that are observed in the model and the number of bonds (or angles) that are defined in the Chemical Component Dictionary. The Link column lists molecule types, if any, to which the group is linked. The Z score for a bond length (or angle) is the number of standard deviations the observed value is removed from the expected value. A bond length (or angle) with  $|Z| > 2$  is considered an outlier worth inspection. RMSZ is the root-mean-square of all Z scores of the bond lengths (or angles).

Mol	Type	Chain	Res	Link	Bond lengths			Bond angles		
					Counts	RMSZ	# Z  > 2	Counts	RMSZ	# Z  > 2
3	F6P	A	602	-	15,16,16	0.61	0	17,25,25	1.08	1 (5%)
5	ADP	A	604	-	24,29,29	0.95	1 (4%)	29,45,45	1.46	4 (13%)
2	DMS	A	601	-	3,3,3	0.43	0	3,3,3	1.29	1 (33%)
4	BWW	A	603	-	30,30,30	2.35	6 (20%)	44,44,44	2.11	16 (36%)

In the following table, the Chirals column lists the number of chiral outliers, the number of chiral centers analysed, the number of these observed in the model and the number defined in the Chemical Component Dictionary. Similar counts are reported in the Torsion and Rings columns. '–' means no outliers of that kind were identified.

Mol	Type	Chain	Res	Link	Chirals	Torsions	Rings
3	F6P	A	602	-	-	1/9/28/28	0/1/1/1
5	ADP	A	604	-	-	3/12/32/32	0/3/3/3
4	BWW	A	603	-	-	2/19/19/19	0/3/3/3

All (7) bond length outliers are listed below:

Mol	Chain	Res	Type	Atoms	Z	Observed(Å)	Ideal(Å)
4	A	603	BWW	C5-S	-8.36	1.63	1.76
4	A	603	BWW	C1-C18	4.58	1.48	1.40
4	A	603	BWW	C4-N	-4.40	1.36	1.43
4	A	603	BWW	C11-C16	3.79	1.51	1.40
4	A	603	BWW	O-C	3.52	1.33	1.22
4	A	603	BWW	O1-C	-2.74	1.22	1.30
5	A	604	ADP	C5-C4	2.33	1.47	1.40

All (22) bond angle outliers are listed below:

Mol	Chain	Res	Type	Atoms	Z	Observed(°)	Ideal(°)
4	A	603	BWW	O3-S-O2	-6.71	111.30	119.55
4	A	603	BWW	C10-C5-S	4.01	124.13	119.77
4	A	603	BWW	C5-S-N	3.90	111.74	106.83
5	A	604	ADP	N3-C2-N1	-3.60	123.05	128.68
4	A	603	BWW	O5-C18-C1	-3.54	115.19	121.70
4	A	603	BWW	C10-C5-C6	-3.45	116.38	120.62
5	A	604	ADP	C4-C5-N7	-3.25	106.02	109.40
4	A	603	BWW	C15-C14-C13	3.11	121.58	118.36
5	A	604	ADP	O4'-C1'-C2'	-2.94	102.63	106.93
4	A	603	BWW	C9-C10-C5	2.69	121.75	118.95
5	A	604	ADP	PA-O3A-PB	-2.63	123.79	132.83
4	A	603	BWW	C15-C16-C11	-2.56	116.41	120.37
4	A	603	BWW	C6-C7-C11	-2.56	116.38	120.61
4	A	603	BWW	C7-C6-C5	2.48	121.92	119.96
4	A	603	BWW	C12-C11-C16	2.43	120.53	117.55
4	A	603	BWW	O1-C-O	-2.38	118.08	123.35
4	A	603	BWW	C2-C3-C4	2.29	122.95	120.30
4	A	603	BWW	C8-C7-C6	2.14	121.19	118.16
3	A	602	F6P	O6-P-O1P	-2.07	100.67	106.47
2	A	601	DMS	O-S-C2	2.06	117.04	106.54
4	A	603	BWW	C9-C8-C7	-2.03	118.01	120.56
4	A	603	BWW	C2-C1-C	2.03	123.29	118.63

There are no chirality outliers.

All (6) torsion outliers are listed below:

Mol	Chain	Res	Type	Atoms
5	A	604	ADP	C5'-O5'-PA-O2A
5	A	604	ADP	C5'-O5'-PA-O3A
5	A	604	ADP	PA-O3A-PB-O1B

*Continued on next page...*

Continued from previous page...

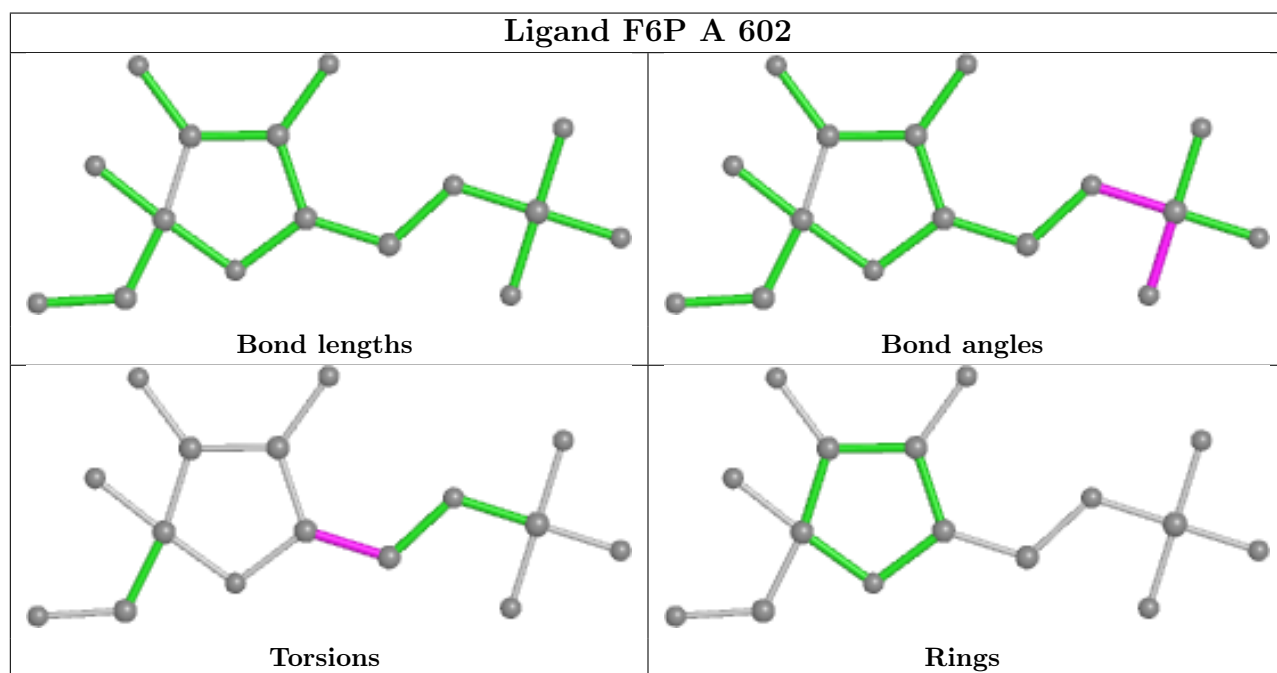
Mol	Chain	Res	Type	Atoms
4	A	603	BWW	C16-C11-C7-C6
3	A	602	F6P	C4-C5-C6-O6
4	A	603	BWW	C16-C11-C7-C8

There are no ring outliers.

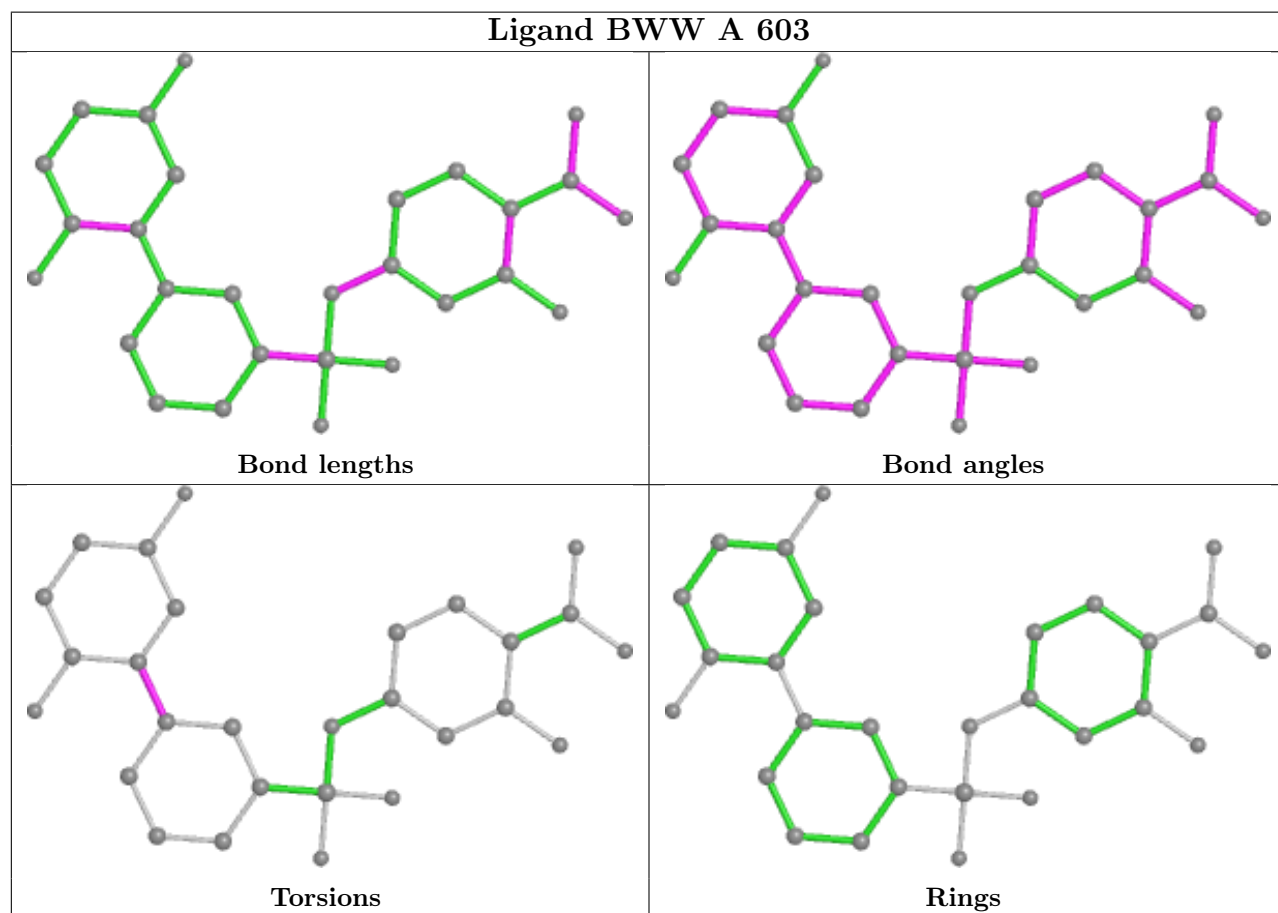
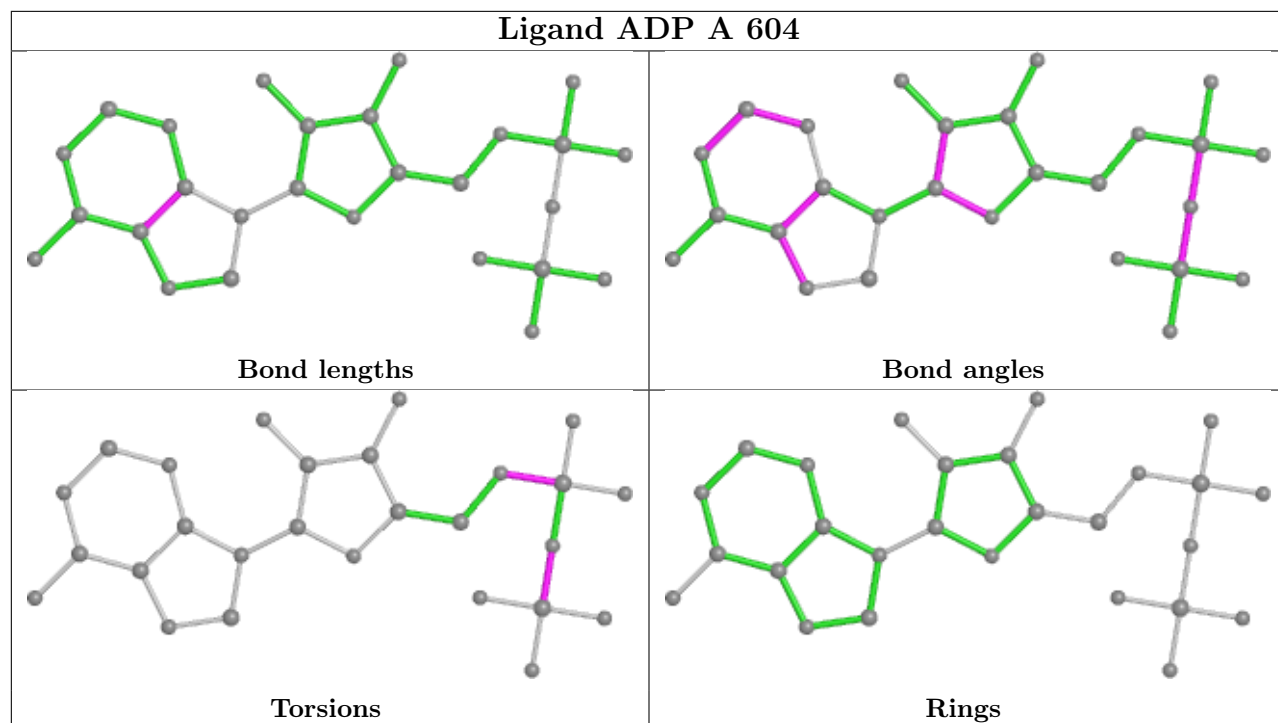
2 monomers are involved in 6 short contacts:

Mol	Chain	Res	Type	Clashes	Symm-Clashes
5	A	604	ADP	4	0
2	A	601	DMS	2	0

The following is a two-dimensional graphical depiction of Mogul quality analysis of bond lengths, bond angles, torsion angles, and ring geometry for all instances of the Ligand of Interest. In addition, ligands with molecular weight > 250 and outliers as shown on the validation Tables will also be included. For torsion angles, if less than 5% of the Mogul distribution of torsion angles is within 10 degrees of the torsion angle in question, then that torsion angle is considered an outlier. Any bond that is central to one or more torsion angles identified as an outlier by Mogul will be highlighted in the graph. For rings, the root-mean-square deviation (RMSD) between the ring in question and similar rings identified by Mogul is calculated over all ring torsion angles. If the average RMSD is greater than 60 degrees and the minimal RMSD between the ring in question and any Mogul-identified rings is also greater than 60 degrees, then that ring is considered an outlier. The outliers are highlighted in purple. The color gray indicates Mogul did not find sufficient equivalents in the CSD to analyse the geometry.







## 5.7 Other polymers [i](#)

There are no such residues in this entry.

## 5.8 Polymer linkage issues [i](#)

There are no chain breaks in this entry.

## 6 Fit of model and data [i](#)

### 6.1 Protein, DNA and RNA chains [i](#)

In the following table, the column labelled '#RSRZ > 2' contains the number (and percentage) of RSRZ outliers, followed by percent RSRZ outliers for the chain as percentile scores relative to all X-ray entries and entries of similar resolution. The OWAB column contains the minimum, median, 95<sup>th</sup> percentile and maximum values of the occupancy-weighted average B-factor per residue. The column labelled 'Q < 0.9' lists the number of (and percentage) of residues with an average occupancy less than 0.9.

Mol	Chain	Analysed	<RSRZ>	#RSRZ>2	OWAB(Å <sup>2</sup> )	Q<0.9
1	A	431/520 (82%)	-0.47	1 (0%) 95 95	23, 39, 66, 89	0

All (1) RSRZ outliers are listed below:

Mol	Chain	Res	Type	RSRZ
1	A	349	GLN	2.4

### 6.2 Non-standard residues in protein, DNA, RNA chains [i](#)

In the following table, the Atoms column lists the number of modelled atoms in the group and the number defined in the chemical component dictionary. The B-factors column lists the minimum, median, 95<sup>th</sup> percentile and maximum values of B factors of atoms in the group. The column labelled 'Q < 0.9' lists the number of atoms with occupancy less than 0.9.

Mol	Type	Chain	Res	Atoms	RSCC	RSR	B-factors(Å <sup>2</sup> )	Q<0.9
1	NEP	A	253	14/15	0.99	0.12	27,30,32,33	0

### 6.3 Carbohydrates [i](#)

There are no monosaccharides in this entry.

### 6.4 Ligands [i](#)

In the following table, the Atoms column lists the number of modelled atoms in the group and the number defined in the chemical component dictionary. The B-factors column lists the minimum, median, 95<sup>th</sup> percentile and maximum values of B factors of atoms in the group. The column labelled 'Q < 0.9' lists the number of atoms with occupancy less than 0.9.

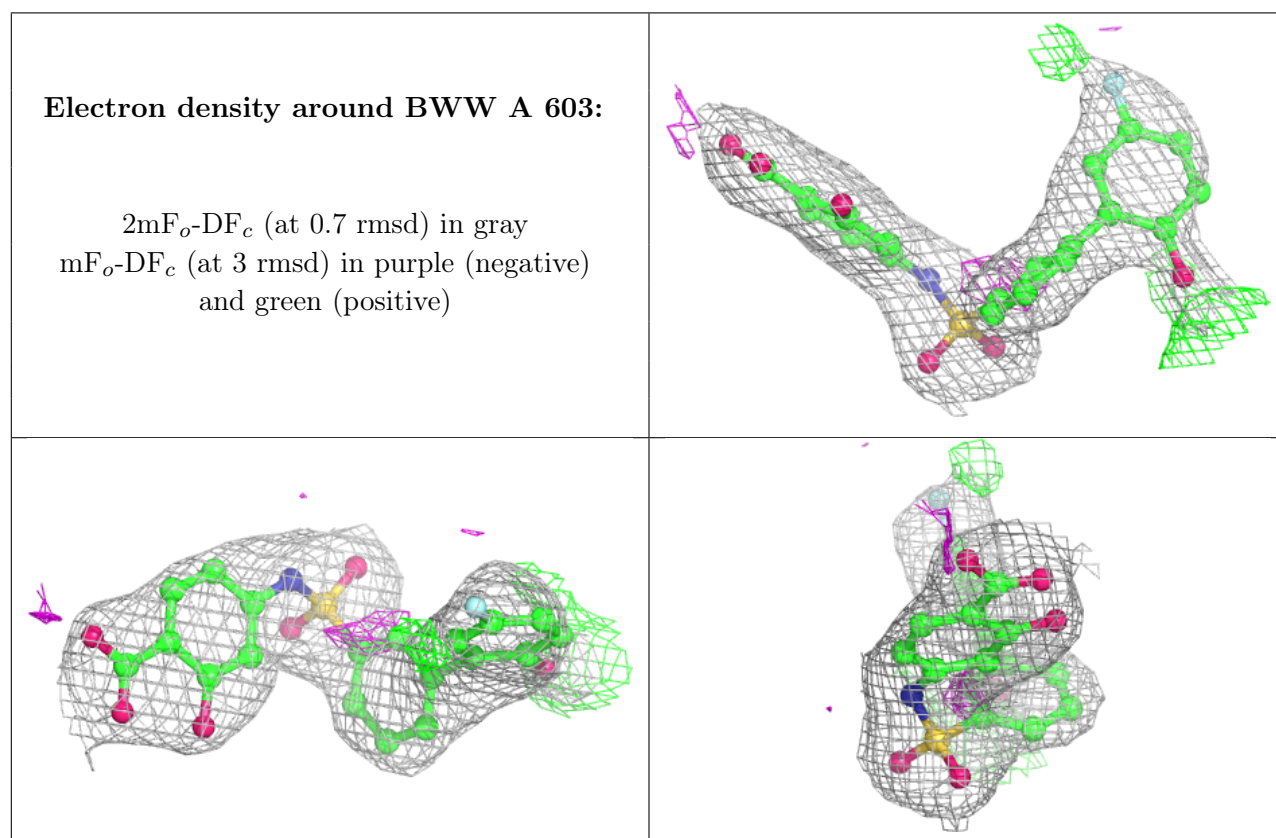
Mol	Type	Chain	Res	Atoms	RSCC	RSR	B-factors(Å <sup>2</sup> )	Q<0.9
2	DMS	A	601	4/4	0.76	0.18	73,77,81,96	0

*Continued on next page...*

*Continued from previous page...*

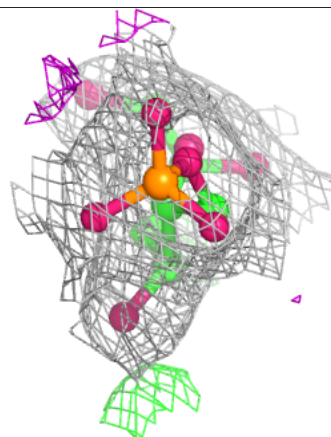
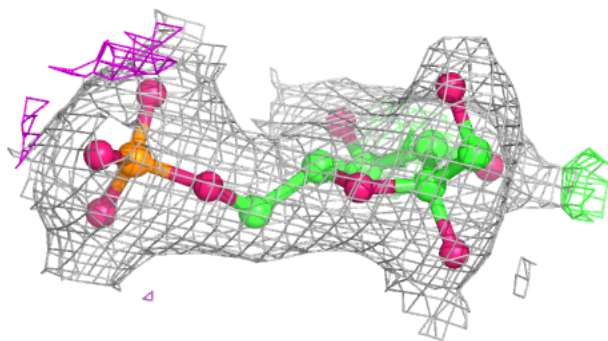
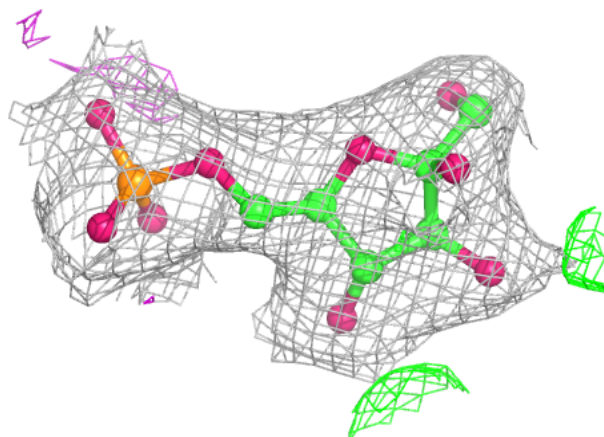
Mol	Type	Chain	Res	Atoms	RSCC	RSR	B-factors( $\text{\AA}^2$ )	Q<0.9
4	BWW	A	603	28/28	0.97	0.12	35,44,78,80	0
3	F6P	A	602	16/16	0.98	0.13	31,33,37,40	0
5	ADP	A	604	27/27	0.99	0.11	32,41,46,47	0

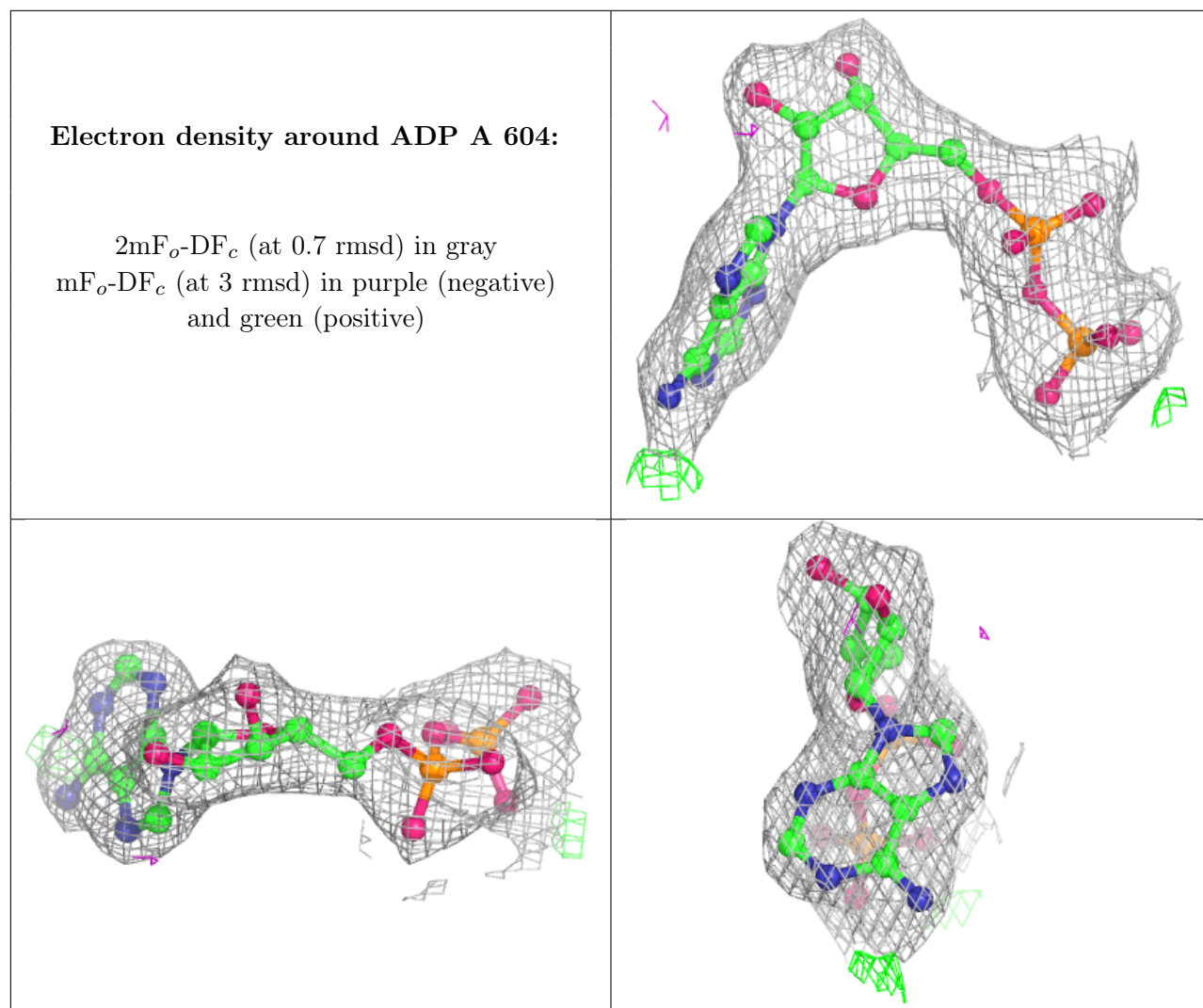
The following is a graphical depiction of the model fit to experimental electron density of all instances of the Ligand of Interest. In addition, ligands with molecular weight > 250 and outliers as shown on the geometry validation Tables will also be included. Each fit is shown from different orientation to approximate a three-dimensional view.



**Electron density around F6P A 602:**

$2mF_o-DF_c$  (at 0.7 rmsd) in gray  
 $mF_o-DF_c$  (at 3 rmsd) in purple (negative)  
and green (positive)





## 6.5 Other polymers [i](#)

There are no such residues in this entry.