



wwPDB X-ray Structure Validation Summary Report ⓘ

Oct 15, 2024 – 09:02 AM JST

PDB ID : 6KA7
Title : The complex structure of Human IgG Fc and its binding Repebody
Authors : Choi, J.; Kim, H.
Deposited on : 2019-06-21
Resolution : 3.00 Å(reported)

This is a wwPDB X-ray Structure Validation Summary Report for a publicly released PDB entry.

We welcome your comments at validation@mail.wwpdb.org

A user guide is available at

<https://www.wwpdb.org/validation/2017/XrayValidationReportHelp>

with specific help available everywhere you see the ⓘ symbol.

The types of validation reports are described at

<http://www.wwpdb.org/validation/2017/FAQs#types>.

The following versions of software and data (see [references ⓘ](#)) were used in the production of this report:

MolProbity : 4.02b-467
Mogul : 1.8.5 (274361), CSD as541be (2020)
Xtriage (Phenix) : 1.13
EDS : 3.0
Percentile statistics : 20231227.v01 (using entries in the PDB archive December 27th 2023)
CCP4 : 9.0.003 (Gargrove)
Density-Fitness : 1.0.11
Ideal geometry (proteins) : Engh & Huber (2001)
Ideal geometry (DNA, RNA) : Parkinson et al. (1996)
Validation Pipeline (wwPDB-VP) : 2.39

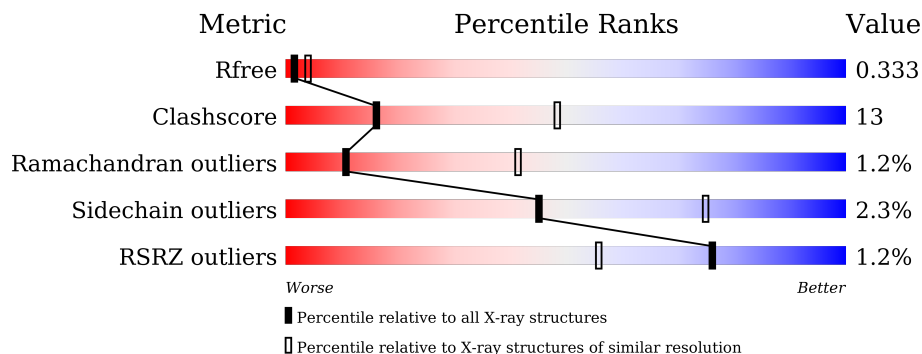
1 Overall quality at a glance

The following experimental techniques were used to determine the structure:

X-RAY DIFFRACTION

The reported resolution of this entry is 3.00 Å.

Percentile scores (ranging between 0-100) for global validation metrics of the entry are shown in the following graphic. The table shows the number of entries on which the scores are based.



Metric	Whole archive (#Entries)	Similar resolution (#Entries, resolution range(Å))
R_{free}	164625	2511 (3.00-3.00)
Clashscore	180529	2866 (3.00-3.00)
Ramachandran outliers	177936	2778 (3.00-3.00)
Sidechain outliers	177891	2781 (3.00-3.00)
RSRZ outliers	164620	2523 (3.00-3.00)

The table below summarises the geometric issues observed across the polymeric chains and their fit to the electron density. The red, orange, yellow and green segments of the lower bar indicate the fraction of residues that contain outliers for ≥ 3 , 2, 1 and 0 types of geometric quality criteria respectively. A grey segment represents the fraction of residues that are not modelled. The numeric value for each fraction is indicated below the corresponding segment, with a dot representing fractions $\leq 5\%$. The upper red bar (where present) indicates the fraction of residues that have poor fit to the electron density. The numeric value is given above the bar.

Mol	Chain	Length	Quality of chain
1	A	256	 2% 68% 27% . .
1	B	256	 % 54% 27% . 19%
2	C	208	 % 66% 28% . 5%
2	D	208	 72% 26% .
3	E	8	 88% 12%
3	F	8	 88% 12%

2 Entry composition [i](#)

There are 4 unique types of molecules in this entry. The entry contains 6718 atoms, of which 0 are hydrogens and 0 are deuteriums.

In the tables below, the ZeroOcc column contains the number of atoms modelled with zero occupancy, the AltConf column contains the number of residues with at least one atom in alternate conformation and the Trace column contains the number of residues modelled with at most 2 atoms.

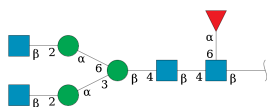
- Molecule 1 is a protein called repebody.

Mol	Chain	Residues	Atoms					ZeroOcc	AltConf	Trace
			Total	C	N	O	S			
1	A	246	Total 1792	C 1141	N 298	O 350	S 3	0	0	0
1	B	208	Total 1535	C 976	N 260	O 297	S 2	0	0	0

- Molecule 2 is a protein called Immunoglobulin gamma-1 heavy chain.

Mol	Chain	Residues	Atoms					ZeroOcc	AltConf	Trace
			Total	C	N	O	S			
2	C	198	Total 1562	C 994	N 262	O 300	S 6	0	0	0
2	D	208	Total 1625	C 1037	N 269	O 313	S 6	0	0	0

- Molecule 3 is an oligosaccharide called 2-acetamido-2-deoxy-beta-D-glucopyranose-(1-2)-alpha-D-mannopyranose-(1-3)-[2-acetamido-2-deoxy-beta-D-glucopyranose-(1-2)-alpha-D-mannopyranose-(1-6)]beta-D-mannopyranose-(1-4)-2-acetamido-2-deoxy-beta-D-glucopyranose-(1-4)-[alpha-L-fucopyranose-(1-6)]2-acetamido-2-deoxy-beta-D-glucopyranose.



Mol	Chain	Residues	Atoms				ZeroOcc	AltConf	Trace
			Total	C	N	O			
3	E	8	Total 99	C 56	N 4	O 39	0	0	0
3	F	8	Total 99	C 56	N 4	O 39	0	0	0

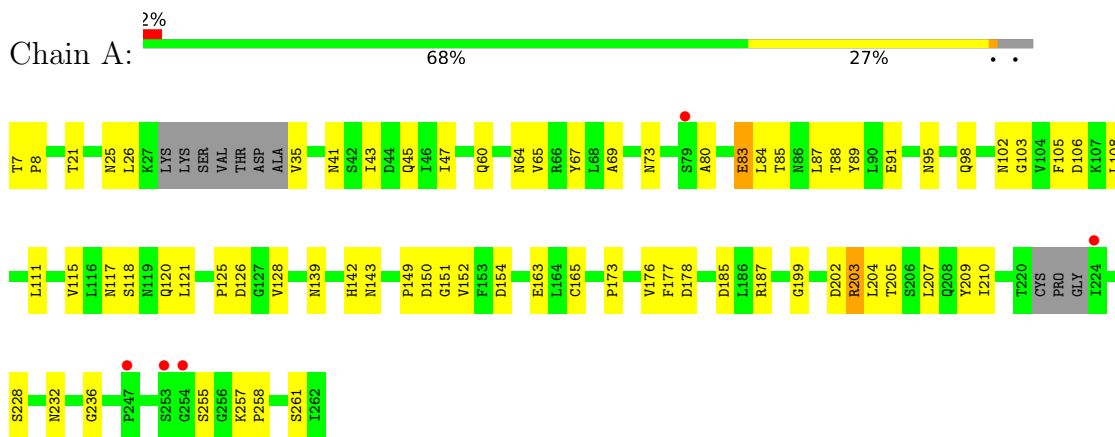
- Molecule 4 is water.

Mol	Chain	Residues	Atoms	ZeroOcc	AltConf
4	A	1	Total O 1 1	0	0
4	C	1	Total O 1 1	0	0
4	D	4	Total O 4 4	0	0

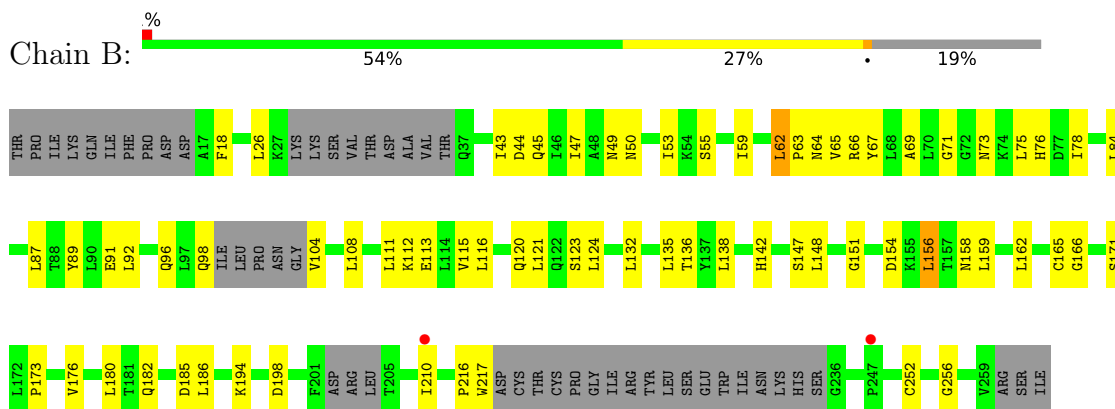
3 Residue-property plots [i](#)

These plots are drawn for all protein, RNA, DNA and oligosaccharide chains in the entry. The first graphic for a chain summarises the proportions of the various outlier classes displayed in the second graphic. The second graphic shows the sequence view annotated by issues in geometry and electron density. Residues are color-coded according to the number of geometric quality criteria for which they contain at least one outlier: green = 0, yellow = 1, orange = 2 and red = 3 or more. A red dot above a residue indicates a poor fit to the electron density ($RSRZ > 2$). Stretches of 2 or more consecutive residues without any outlier are shown as a green connector. Residues present in the sample, but not in the model, are shown in grey.

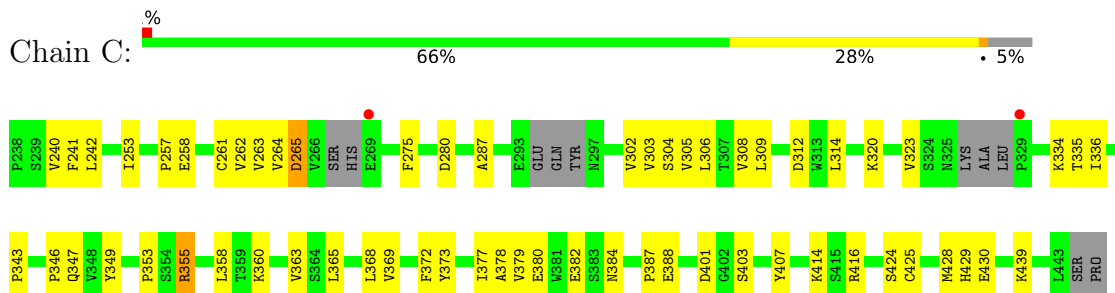
- Molecule 1: repebody



- Molecule 1: repebody

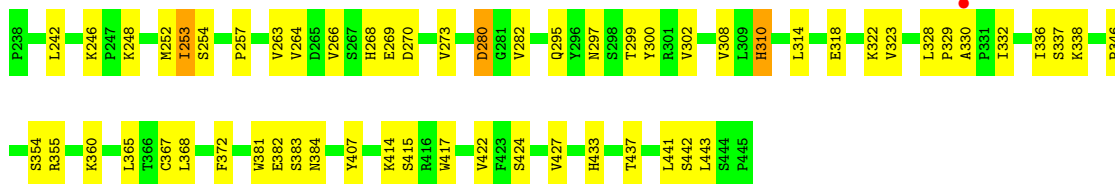


- Molecule 2: Immunoglobulin gamma-1 heavy chain

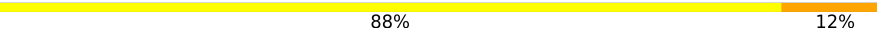


- Molecule 2: Immunoglobulin gamma-1 heavy chain

Chain D:  72% 26%

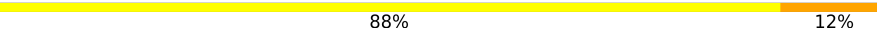


- Molecule 3: 2-acetamido-2-deoxy-beta-D-glucopyranose-(1-2)-alpha-D-mannopyranose-(1-3)-[2-acetamido-2-deoxy-beta-D-glucopyranose-(1-2)-alpha-D-mannopyranose-(1-6)]beta-D-mannopyranose-(1-4)-2-acetamido-2-deoxy-beta-D-glucopyranose-(1-4)-[alpha-L-fucopyranose-(1-6)]2-acetamido-2-deoxy-beta-D-glucopyranose

Chain E:  88% 12%



- Molecule 3: 2-acetamido-2-deoxy-beta-D-glucopyranose-(1-2)-alpha-D-mannopyranose-(1-3)-[2-acetamido-2-deoxy-beta-D-glucopyranose-(1-2)-alpha-D-mannopyranose-(1-6)]beta-D-mannopyranose-(1-4)-2-acetamido-2-deoxy-beta-D-glucopyranose-(1-4)-[alpha-L-fucopyranose-(1-6)]2-acetamido-2-deoxy-beta-D-glucopyranose

Chain F:  88% 12%



4 Data and refinement statistics

Property	Value	Source
Space group	P 21 21 21	Depositor
Cell constants a, b, c, α , β , γ	59.93Å 107.42Å 171.35Å 90.00° 90.00° 90.00°	Depositor
Resolution (Å)	29.23 – 3.00 29.23 – 3.00	Depositor EDS
% Data completeness (in resolution range)	100.0 (29.23-3.00) 99.8 (29.23-3.00)	Depositor EDS
R_{merge}	0.25	Depositor
R_{sym}	(Not available)	Depositor
$\langle I/\sigma(I) \rangle$ ¹	2.07 (at 3.00Å)	Xtrriage
Refinement program	PHENIX 1.11.1_2575	Depositor
R, R_{free}	0.257 , 0.333 0.257 , 0.333	Depositor DCC
R_{free} test set	21707 reflections (5.00%)	wwPDB-VP
Wilson B-factor (Å ²)	62.1	Xtrriage
Anisotropy	0.091	Xtrriage
Bulk solvent k_{sol} (e/Å ³), B_{sol} (Å ²)	0.28 , 35.4	EDS
L-test for twinning ²	$\langle L \rangle = 0.48$, $\langle L^2 \rangle = 0.31$	Xtrriage
Estimated twinning fraction	No twinning to report.	Xtrriage
F_o, F_c correlation	0.88	EDS
Total number of atoms	6718	wwPDB-VP
Average B, all atoms (Å ²)	57.0	wwPDB-VP

Xtrriage's analysis on translational NCS is as follows: *The largest off-origin peak in the Patterson function is 5.50% of the height of the origin peak. No significant pseudotranslation is detected.*

¹Intensities estimated from amplitudes.

²Theoretical values of $\langle |L| \rangle$, $\langle L^2 \rangle$ for acentric reflections are 0.5, 0.333 respectively for untwinned datasets, and 0.375, 0.2 for perfectly twinned datasets.

5 Model quality [i](#)

5.1 Standard geometry [i](#)

Bond lengths and bond angles in the following residue types are not validated in this section: BMA, FUC, NAG, MAN

The Z score for a bond length (or angle) is the number of standard deviations the observed value is removed from the expected value. A bond length (or angle) with $|Z| > 5$ is considered an outlier worth inspection. RMSZ is the root-mean-square of all Z scores of the bond lengths (or angles).

Mol	Chain	Bond lengths		Bond angles	
		RMSZ	# Z >5	RMSZ	# Z >5
1	A	0.44	0/1824	0.63	0/2504
1	B	0.42	0/1559	0.66	0/2132
2	C	0.60	1/1603 (0.1%)	0.73	0/2184
2	D	0.57	0/1671	0.68	0/2287
All	All	0.51	1/6657 (0.0%)	0.67	0/9107

All (1) bond length outliers are listed below:

Mol	Chain	Res	Type	Atoms	Z	Observed(Å)	Ideal(Å)
2	C	261	CYS	CB-SG	-5.54	1.72	1.81

There are no bond angle outliers.

There are no chirality outliers.

There are no planarity outliers.

5.2 Too-close contacts [i](#)

In the following table, the Non-H and H(model) columns list the number of non-hydrogen atoms and hydrogen atoms in the chain respectively. The H(added) column lists the number of hydrogen atoms added and optimized by MolProbity. The Clashes column lists the number of clashes within the asymmetric unit, whereas Symm-Clashes lists symmetry-related clashes.

Mol	Chain	Non-H	H(model)	H(added)	Clashes	Symm-Clashes
1	A	1792	0	1660	44	0
1	B	1535	0	1435	47	0
2	C	1562	0	1500	43	0
2	D	1625	0	1551	39	0
3	E	99	0	85	4	0
3	F	99	0	85	1	0

Continued on next page...

Continued from previous page...

Mol	Chain	Non-H	H(model)	H(added)	Clashes	Symm-Clashes
4	A	1	0	0	0	0
4	C	1	0	0	0	0
4	D	4	0	0	1	0
All	All	6718	0	6316	168	0

The all-atom clashscore is defined as the number of clashes found per 1000 atoms (including hydrogen atoms). The all-atom clashscore for this structure is 13.

The worst 5 of 168 close contacts within the same asymmetric unit are listed below, sorted by their clash magnitude.

Atom-1	Atom-2	Interatomic distance (Å)	Clash overlap (Å)
1:A:178:ASP:HA	1:A:203:ARG:HD2	1.45	0.98
2:C:320:LYS:HG3	2:C:335:THR:HG22	1.49	0.95
1:A:21:THR:O	1:A:25:ASN:ND2	2.01	0.91
1:A:228:SER:O	1:A:232:ASN:ND2	2.08	0.87
2:D:295:GLN:NE2	2:D:299:THR:O	2.11	0.83

There are no symmetry-related clashes.

5.3 Torsion angles [i](#)

5.3.1 Protein backbone [i](#)

In the following table, the Percentiles column shows the percent Ramachandran outliers of the chain as a percentile score with respect to all X-ray entries followed by that with respect to entries of similar resolution.

The Analysed column shows the number of residues for which the backbone conformation was analysed, and the total number of residues.

Mol	Chain	Analysed	Favoured	Allowed	Outliers	Percentiles	
1	A	240/256 (94%)	208 (87%)	30 (12%)	2 (1%)	16	51
1	B	198/256 (77%)	160 (81%)	36 (18%)	2 (1%)	13	46
2	C	190/208 (91%)	177 (93%)	11 (6%)	2 (1%)	12	44
2	D	206/208 (99%)	187 (91%)	15 (7%)	4 (2%)	6	31
All	All	834/928 (90%)	732 (88%)	92 (11%)	10 (1%)	11	41

5 of 10 Ramachandran outliers are listed below:

Mol	Chain	Res	Type
1	A	84	LEU
2	D	253	ILE
2	D	269	GLU
2	D	329	PRO
1	B	64	ASN

5.3.2 Protein sidechains [i](#)

In the following table, the Percentiles column shows the percent sidechain outliers of the chain as a percentile score with respect to all X-ray entries followed by that with respect to entries of similar resolution.

The Analysed column shows the number of residues for which the sidechain conformation was analysed, and the total number of residues.

Mol	Chain	Analysed	Rotameric	Outliers	Percentiles	
1	A	184/230 (80%)	181 (98%)	3 (2%)	58	82
1	B	157/230 (68%)	152 (97%)	5 (3%)	34	67
2	C	179/195 (92%)	176 (98%)	3 (2%)	56	81
2	D	184/195 (94%)	179 (97%)	5 (3%)	40	71
All	All	704/850 (83%)	688 (98%)	16 (2%)	45	75

5 of 16 residues with a non-rotameric sidechain are listed below:

Mol	Chain	Res	Type
2	D	355	ARG
2	D	310	HIS
2	C	355	ARG
2	D	280	ASP
1	B	198	ASP

Sometimes sidechains can be flipped to improve hydrogen bonding and reduce clashes. All (4) such sidechains are listed below:

Mol	Chain	Res	Type
1	A	98	GLN
2	D	295	GLN
2	D	310	HIS
2	D	384	ASN

5.3.3 RNA [i](#)

There are no RNA molecules in this entry.

5.4 Non-standard residues in protein, DNA, RNA chains [i](#)

There are no non-standard protein/DNA/RNA residues in this entry.

5.5 Carbohydrates [i](#)

16 monosaccharides are modelled in this entry.

In the following table, the Counts columns list the number of bonds (or angles) for which Mogul statistics could be retrieved, the number of bonds (or angles) that are observed in the model and the number of bonds (or angles) that are defined in the Chemical Component Dictionary. The Link column lists molecule types, if any, to which the group is linked. The Z score for a bond length (or angle) is the number of standard deviations the observed value is removed from the expected value. A bond length (or angle) with $|Z| > 2$ is considered an outlier worth inspection. RMSZ is the root-mean-square of all Z scores of the bond lengths (or angles).

Mol	Type	Chain	Res	Link	Bond lengths			Bond angles		
					Counts	RMSZ	# Z > 2	Counts	RMSZ	# Z > 2
3	NAG	E	1	3,2	14,14,15	2.03	5 (35%)	17,19,21	1.74	4 (23%)
3	NAG	E	2	3	14,14,15	1.84	4 (28%)	17,19,21	2.07	4 (23%)
3	BMA	E	3	3	11,11,12	1.64	2 (18%)	15,15,17	1.59	3 (20%)
3	MAN	E	4	3	11,11,12	1.53	3 (27%)	15,15,17	2.20	5 (33%)
3	NAG	E	5	3	14,14,15	2.14	4 (28%)	17,19,21	1.65	3 (17%)
3	MAN	E	6	3	11,11,12	1.64	3 (27%)	15,15,17	1.53	3 (20%)
3	NAG	E	7	3	14,14,15	2.12	5 (35%)	17,19,21	1.76	2 (11%)
3	FUC	E	8	3	10,10,11	1.93	2 (20%)	14,14,16	1.07	2 (14%)
3	NAG	F	1	3,2	14,14,15	1.91	3 (21%)	17,19,21	1.89	6 (35%)
3	NAG	F	2	3	14,14,15	1.97	4 (28%)	17,19,21	1.28	2 (11%)
3	BMA	F	3	3	11,11,12	1.84	3 (27%)	15,15,17	2.07	5 (33%)
3	MAN	F	4	3	11,11,12	1.89	4 (36%)	15,15,17	1.41	2 (13%)
3	NAG	F	5	3	14,14,15	2.22	4 (28%)	17,19,21	2.05	6 (35%)
3	MAN	F	6	3	11,11,12	1.93	3 (27%)	15,15,17	1.31	2 (13%)
3	NAG	F	7	3	14,14,15	2.14	4 (28%)	17,19,21	1.59	4 (23%)
3	FUC	F	8	3	10,10,11	2.18	3 (30%)	14,14,16	2.29	5 (35%)

In the following table, the Chirals column lists the number of chiral outliers, the number of chiral centers analysed, the number of these observed in the model and the number defined in the

Chemical Component Dictionary. Similar counts are reported in the Torsion and Rings columns.
'-' means no outliers of that kind were identified.

Mol	Type	Chain	Res	Link	Chirals	Torsions	Rings
3	NAG	E	1	3,2	-	4/6/23/26	0/1/1/1
3	NAG	E	2	3	-	0/6/23/26	0/1/1/1
3	BMA	E	3	3	-	0/2/19/22	0/1/1/1
3	MAN	E	4	3	-	2/2/19/22	0/1/1/1
3	NAG	E	5	3	-	2/6/23/26	0/1/1/1
3	MAN	E	6	3	-	0/2/19/22	0/1/1/1
3	NAG	E	7	3	-	2/6/23/26	0/1/1/1
3	FUC	E	8	3	-	-	0/1/1/1
3	NAG	F	1	3,2	-	3/6/23/26	0/1/1/1
3	NAG	F	2	3	-	2/6/23/26	0/1/1/1
3	BMA	F	3	3	-	1/2/19/22	0/1/1/1
3	MAN	F	4	3	-	2/2/19/22	0/1/1/1
3	NAG	F	5	3	-	4/6/23/26	0/1/1/1
3	MAN	F	6	3	-	2/2/19/22	0/1/1/1
3	NAG	F	7	3	-	4/6/23/26	0/1/1/1
3	FUC	F	8	3	-	-	0/1/1/1

The worst 5 of 56 bond length outliers are listed below:

Mol	Chain	Res	Type	Atoms	Z	Observed(Å)	Ideal(Å)
3	F	8	FUC	O5-C1	5.51	1.52	1.43
3	F	7	NAG	O5-C1	5.32	1.52	1.43
3	F	5	NAG	O5-C1	5.30	1.52	1.43
3	E	7	NAG	O5-C1	5.19	1.52	1.43
3	E	5	NAG	O5-C1	5.09	1.51	1.43

The worst 5 of 58 bond angle outliers are listed below:

Mol	Chain	Res	Type	Atoms	Z	Observed(°)	Ideal(°)
3	F	3	BMA	C1-O5-C5	5.96	120.26	112.19
3	E	4	MAN	C1-O5-C5	-5.89	104.21	112.19
3	F	8	FUC	C1-C2-C3	5.69	116.67	109.67
3	E	2	NAG	C1-O5-C5	-4.87	105.59	112.19
3	E	7	NAG	C1-O5-C5	4.57	118.39	112.19

There are no chirality outliers.

5 of 28 torsion outliers are listed below:

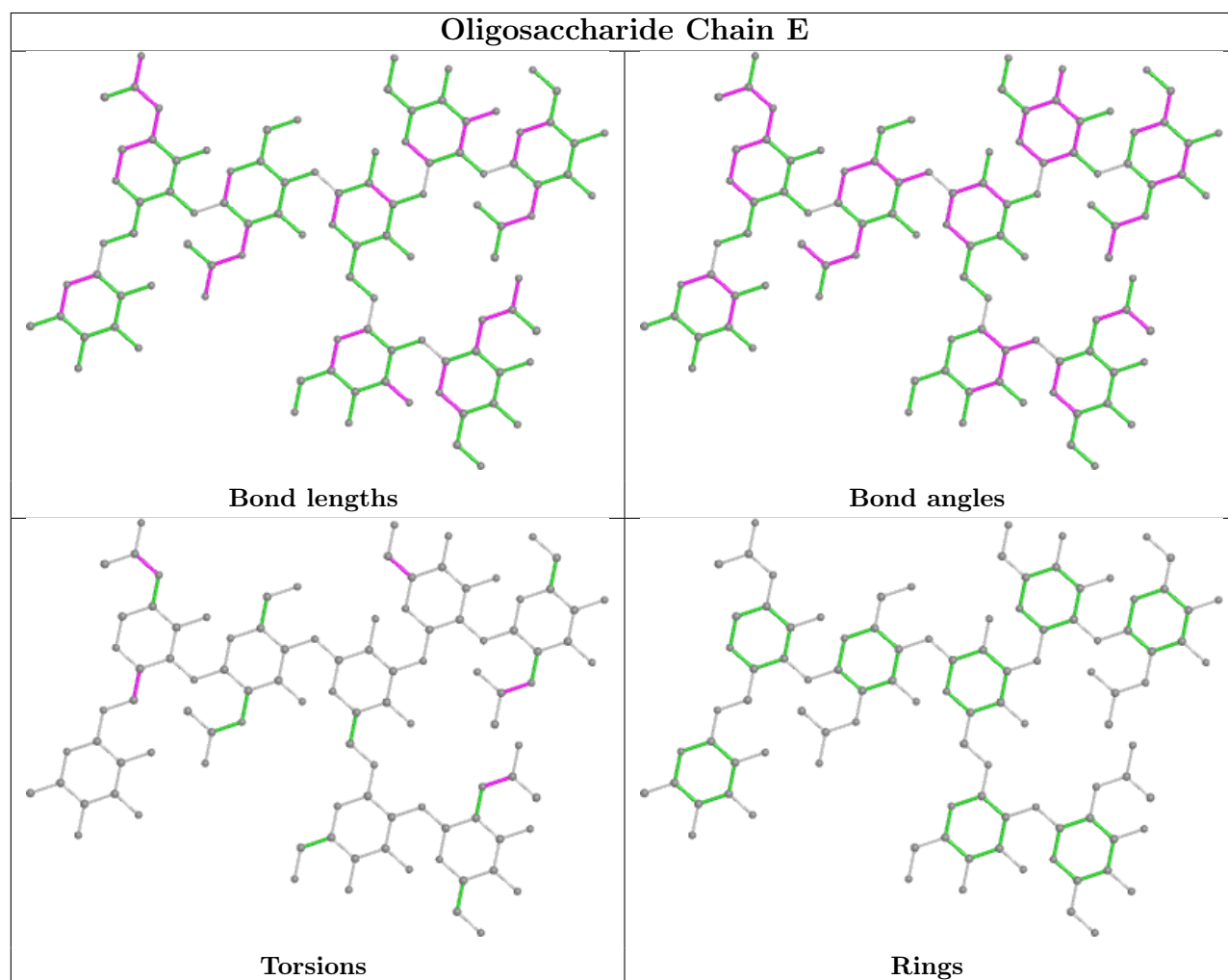
Mol	Chain	Res	Type	Atoms
3	F	5	NAG	O5-C5-C6-O6
3	F	7	NAG	O5-C5-C6-O6
3	E	4	MAN	O5-C5-C6-O6
3	E	1	NAG	O5-C5-C6-O6
3	F	2	NAG	O5-C5-C6-O6

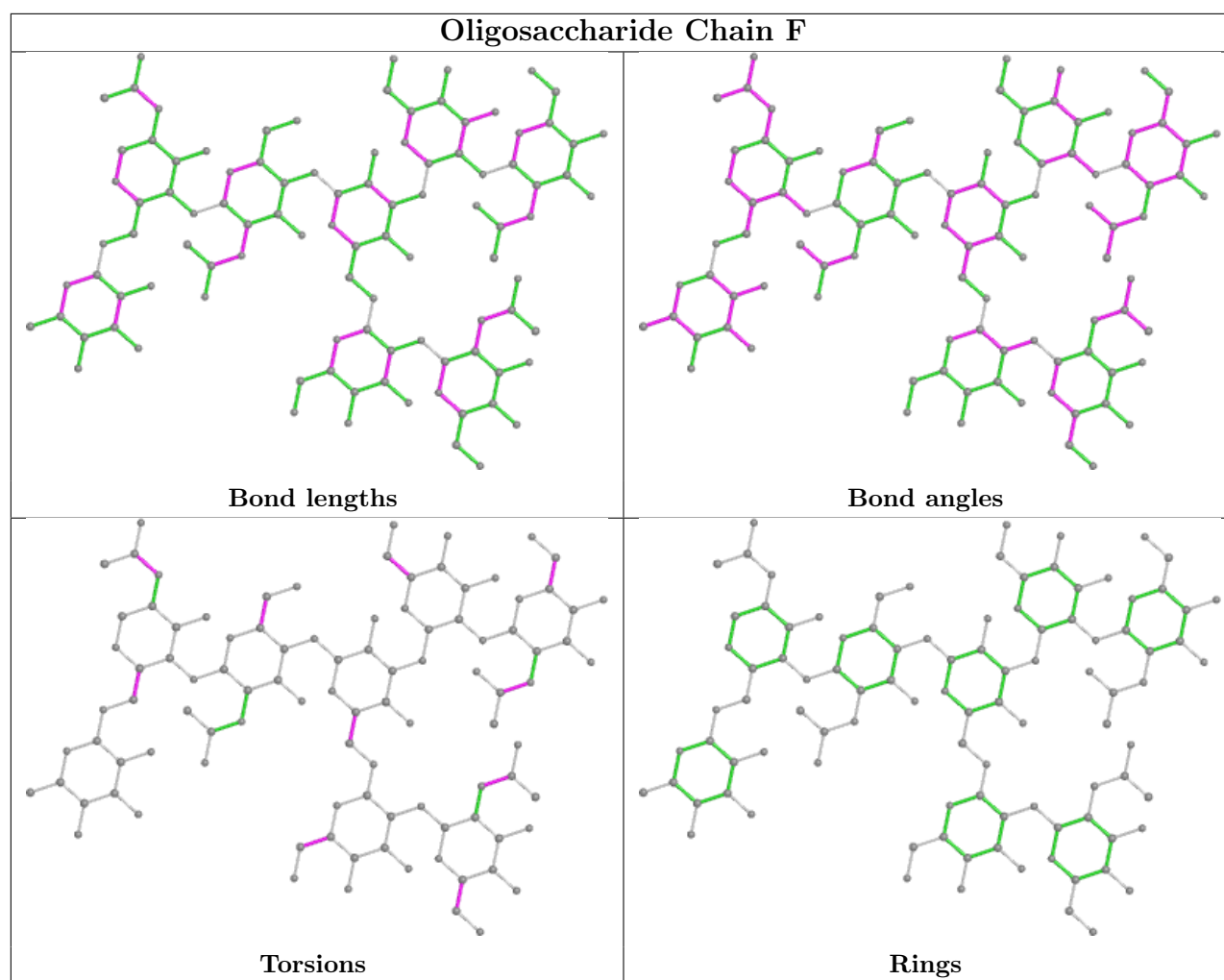
There are no ring outliers.

2 monomers are involved in 5 short contacts:

Mol	Chain	Res	Type	Clashes	Symm-Clashes
3	E	2	NAG	4	0
3	F	1	NAG	1	0

The following is a two-dimensional graphical depiction of Mogul quality analysis of bond lengths, bond angles, torsion angles, and ring geometry for oligosaccharide.





5.6 Ligand geometry [i](#)

There are no ligands in this entry.

5.7 Other polymers [i](#)

There are no such residues in this entry.

5.8 Polymer linkage issues [i](#)

There are no chain breaks in this entry.

6 Fit of model and data [i](#)

6.1 Protein, DNA and RNA chains [i](#)

In the following table, the column labelled '#RSRZ > 2' contains the number (and percentage) of RSRZ outliers, followed by percent RSRZ outliers for the chain as percentile scores relative to all X-ray entries and entries of similar resolution. The OWAB column contains the minimum, median, 95th percentile and maximum values of the occupancy-weighted average B-factor per residue. The column labelled 'Q < 0.9' lists the number of (and percentage) of residues with an average occupancy less than 0.9.

Mol	Chain	Analysed	<RSRZ>	#RSRZ>2	OWAB(Å ²)	Q<0.9
1	A	246/256 (96%)	0.19	5 (2%) 64 43	38, 67, 82, 91	0
1	B	208/256 (81%)	0.15	2 (0%) 79 60	43, 70, 90, 105	0
2	C	198/208 (95%)	-0.22	2 (1%) 79 60	22, 43, 71, 99	0
2	D	208/208 (100%)	-0.29	1 (0%) 87 75	21, 44, 74, 95	0
All	All	860/928 (92%)	-0.03	10 (1%) 76 56	21, 59, 84, 105	0

The worst 5 of 10 RSRZ outliers are listed below:

Mol	Chain	Res	Type	RSRZ
2	D	330	ALA	2.6
2	C	269	GLU	2.3
1	A	79	SER	2.3
1	A	254	GLY	2.3
2	C	329	PRO	2.3

6.2 Non-standard residues in protein, DNA, RNA chains [i](#)

There are no non-standard protein/DNA/RNA residues in this entry.

6.3 Carbohydrates [i](#)

In the following table, the Atoms column lists the number of modelled atoms in the group and the number defined in the chemical component dictionary. The B-factors column lists the minimum, median, 95th percentile and maximum values of B factors of atoms in the group. The column labelled 'Q < 0.9' lists the number of atoms with occupancy less than 0.9.

Mol	Type	Chain	Res	Atoms	RSCC	RSR	B-factors(Å ²)	Q<0.9
3	NAG	E	5	14/15	0.42	0.18	80,93,102,105	0
3	NAG	F	5	14/15	0.49	0.14	77,90,95,96	0

Continued on next page...

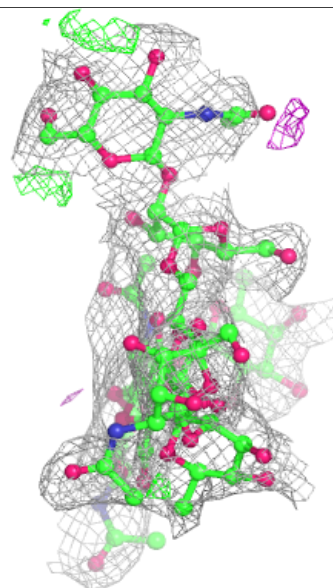
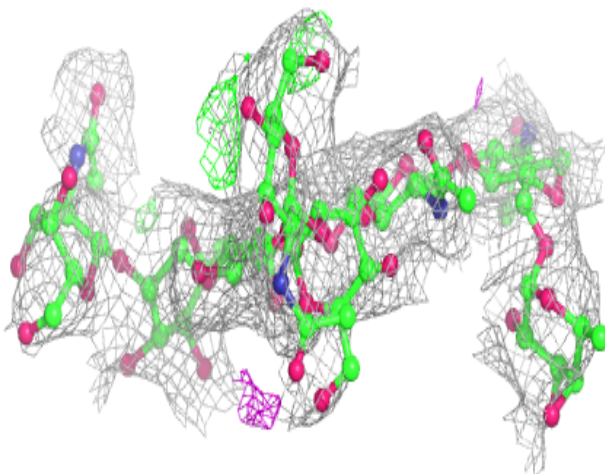
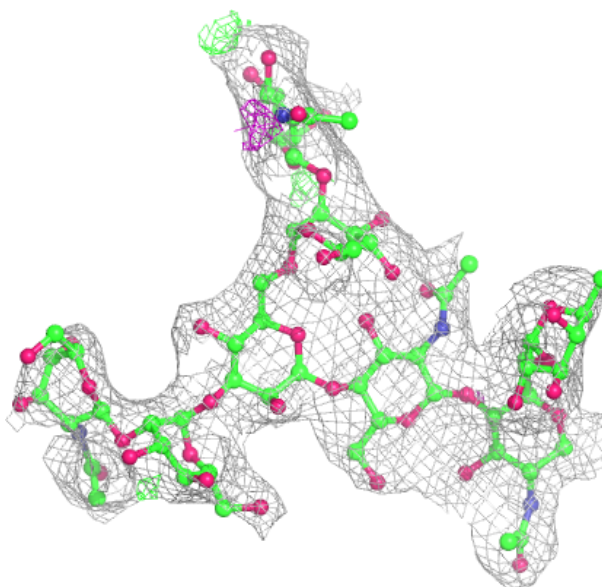
Continued from previous page...

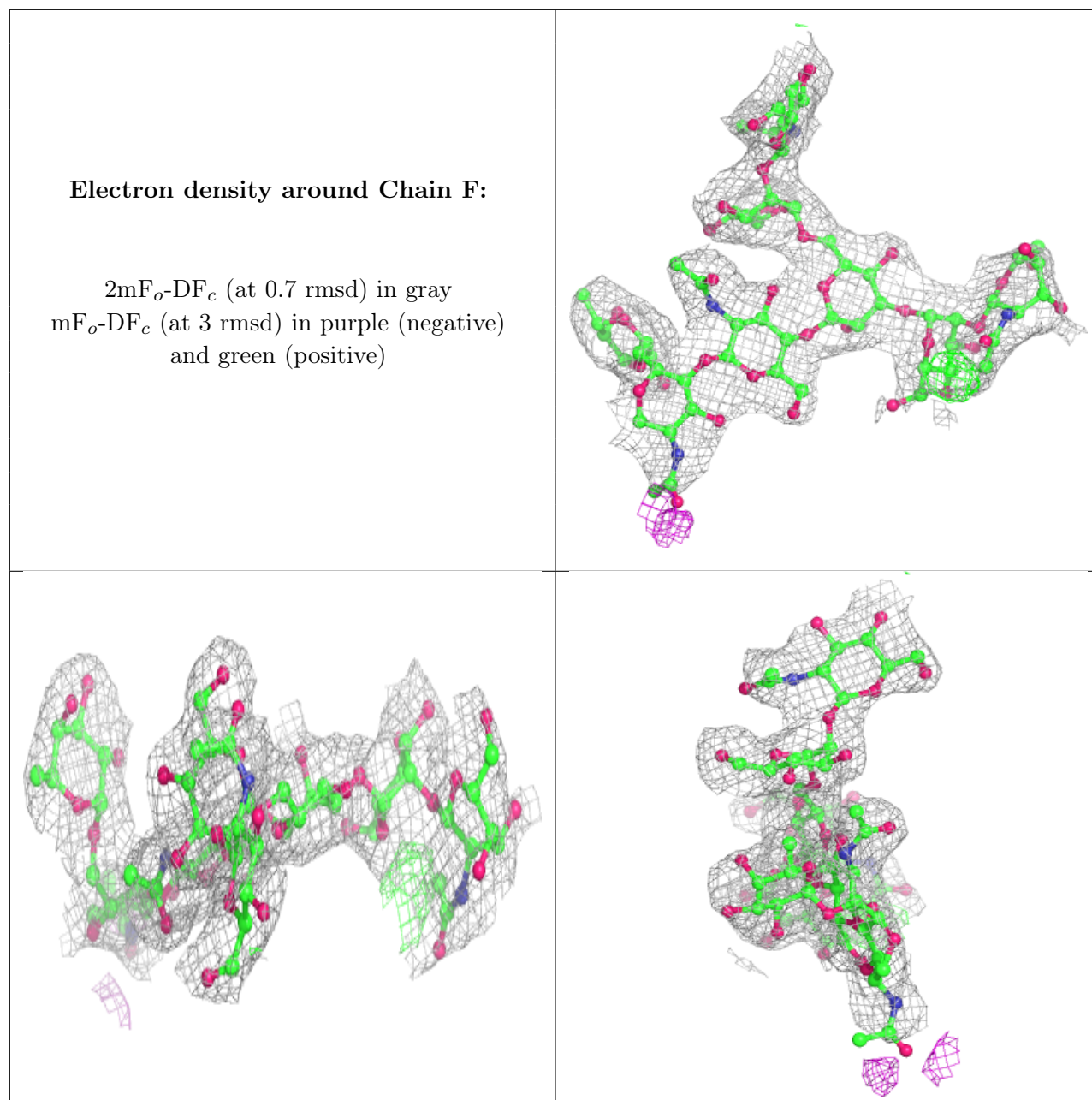
Mol	Type	Chain	Res	Atoms	RSCC	RSR	B-factors(\AA^2)	Q<0.9
3	FUC	E	8	10/11	0.60	0.14	90,98,100,108	0
3	NAG	E	7	14/15	0.62	0.15	66,79,91,94	0
3	FUC	F	8	10/11	0.69	0.12	68,77,81,81	0
3	NAG	F	7	14/15	0.72	0.14	48,61,65,68	0
3	MAN	F	4	11/12	0.77	0.12	69,77,83,88	0
3	NAG	E	1	14/15	0.78	0.12	61,80,90,91	0
3	MAN	E	4	11/12	0.79	0.12	66,80,87,89	0
3	MAN	E	6	11/12	0.79	0.10	78,83,92,96	0
3	BMA	E	3	11/12	0.82	0.08	72,79,83,85	0
3	NAG	E	2	14/15	0.83	0.09	72,81,88,89	0
3	NAG	F	1	14/15	0.83	0.15	59,64,70,75	0
3	BMA	F	3	11/12	0.90	0.07	48,58,65,71	0
3	MAN	F	6	11/12	0.90	0.07	47,58,62,68	0
3	NAG	F	2	14/15	0.93	0.07	51,57,62,64	0

The following is a graphical depiction of the model fit to experimental electron density for oligosaccharide. Each fit is shown from different orientation to approximate a three-dimensional view.

Electron density around Chain E:

$2mF_o-DF_c$ (at 0.7 rmsd) in gray
 mF_o-DF_c (at 3 rmsd) in purple (negative)
and green (positive)





6.4 Ligands [i](#)

There are no ligands in this entry.

6.5 Other polymers [i](#)

There are no such residues in this entry.