



Full wwPDB X-ray Structure Validation Report ⓘ

Jun 11, 2024 – 06:48 PM EDT

PDB ID : 6MYW
Title : Gluconobacter Ene-Reductase (GluER) mutant - T36A
Authors : Garfinkle, S.E.; Jeffrey, P.; Hyster, T.K.
Deposited on : 2018-11-02
Resolution : 1.16 Å(reported)

This is a Full wwPDB X-ray Structure Validation Report for a publicly released PDB entry.

We welcome your comments at validation@mail.wwpdb.org

A user guide is available at

<https://www.wwpdb.org/validation/2017/XrayValidationReportHelp>

with specific help available everywhere you see the ⓘ symbol.

The types of validation reports are described at

<http://www.wwpdb.org/validation/2017/FAQs#types>.

The following versions of software and data (see [references ⓘ](#)) were used in the production of this report:

MolProbity : 4.02b-467
Mogul : 1.8.5 (274361), CSD as541be (2020)
Xtriage (Phenix) : 1.13
EDS : 2.36.2
buster-report : 1.1.7 (2018)
Percentile statistics : 20191225.v01 (using entries in the PDB archive December 25th 2019)
Refmac : 5.8.0158
CCP4 : 7.0.044 (Gargrove)
Ideal geometry (proteins) : Engh & Huber (2001)
Ideal geometry (DNA, RNA) : Parkinson et al. (1996)
Validation Pipeline (wwPDB-VP) : 2.36.2

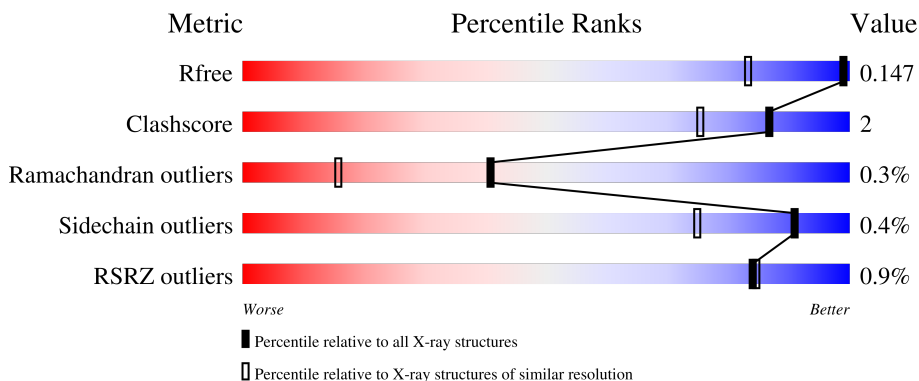
1 Overall quality at a glance

The following experimental techniques were used to determine the structure:

X-RAY DIFFRACTION

The reported resolution of this entry is 1.16 Å.

Percentile scores (ranging between 0-100) for global validation metrics of the entry are shown in the following graphic. The table shows the number of entries on which the scores are based.



Metric	Whole archive (#Entries)	Similar resolution (#Entries, resolution range(Å))
R_{free}	130704	1758 (1.20-1.12)
Clashscore	141614	1832 (1.20-1.12)
Ramachandran outliers	138981	1768 (1.20-1.12)
Sidechain outliers	138945	1768 (1.20-1.12)
RSRZ outliers	127900	1724 (1.20-1.12)

The table below summarises the geometric issues observed across the polymeric chains and their fit to the electron density. The red, orange, yellow and green segments of the lower bar indicate the fraction of residues that contain outliers for ≥ 3 , 2, 1 and 0 types of geometric quality criteria respectively. A grey segment represents the fraction of residues that are not modelled. The numeric value for each fraction is indicated below the corresponding segment, with a dot representing fractions $\leq 5\%$. The upper red bar (where present) indicates the fraction of residues that have poor fit to the electron density. The numeric value is given above the bar.

Mol	Chain	Length	Quality of chain
1	A	369	 91% 5% .
1	B	369	 89% 7% .
1	C	369	 92% 5% .
1	D	369	 90% 6% .

The following table lists non-polymeric compounds, carbohydrate monomers and non-standard

residues in protein, DNA, RNA chains that are outliers for geometric or electron-density-fit criteria:

Mol	Type	Chain	Res	Chirality	Geometry	Clashes	Electron density
3	ACT	A	402	-	-	X	-
4	SO4	D	403	-	-	X	-
4	SO4	D	405	-	-	X	-

2 Entry composition [i](#)

There are 7 unique types of molecules in this entry. The entry contains 13184 atoms, of which 0 are hydrogens and 0 are deuteriums.

In the tables below, the ZeroOcc column contains the number of atoms modelled with zero occupancy, the AltConf column contains the number of residues with at least one atom in alternate conformation and the Trace column contains the number of residues modelled with at most 2 atoms.

- Molecule 1 is a protein called N-ethylmaleimide reductase.

Mol	Chain	Residues	Atoms					ZeroOcc	AltConf	Trace
			Total	C	N	O	S			
1	A	356	Total 2752	C 1737	N 488	O 519	S 8	0	2	0
1	B	356	Total 2754	C 1738	N 491	O 517	S 8	0	2	0
1	C	356	Total 2754	C 1738	N 491	O 517	S 8	0	2	0
1	D	356	Total 2743	C 1732	N 487	O 516	S 8	0	1	0

There are 36 discrepancies between the modelled and reference sequences:

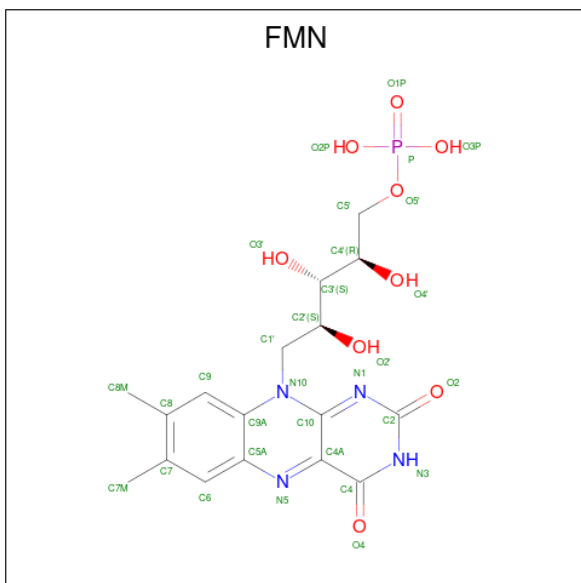
Chain	Residue	Modelled	Actual	Comment	Reference
A	36	ALA	THR	engineered mutation	UNP A1E8I9
A	362	LEU	-	expression tag	UNP A1E8I9
A	363	GLU	-	expression tag	UNP A1E8I9
A	364	HIS	-	expression tag	UNP A1E8I9
A	365	HIS	-	expression tag	UNP A1E8I9
A	366	HIS	-	expression tag	UNP A1E8I9
A	367	HIS	-	expression tag	UNP A1E8I9
A	368	HIS	-	expression tag	UNP A1E8I9
A	369	HIS	-	expression tag	UNP A1E8I9
B	36	ALA	THR	engineered mutation	UNP A1E8I9
B	362	LEU	-	expression tag	UNP A1E8I9
B	363	GLU	-	expression tag	UNP A1E8I9
B	364	HIS	-	expression tag	UNP A1E8I9
B	365	HIS	-	expression tag	UNP A1E8I9
B	366	HIS	-	expression tag	UNP A1E8I9
B	367	HIS	-	expression tag	UNP A1E8I9
B	368	HIS	-	expression tag	UNP A1E8I9
B	369	HIS	-	expression tag	UNP A1E8I9
C	36	ALA	THR	engineered mutation	UNP A1E8I9
C	362	LEU	-	expression tag	UNP A1E8I9
C	363	GLU	-	expression tag	UNP A1E8I9

Continued on next page...

Continued from previous page...

Chain	Residue	Modelled	Actual	Comment	Reference
C	364	HIS	-	expression tag	UNP A1E8I9
C	365	HIS	-	expression tag	UNP A1E8I9
C	366	HIS	-	expression tag	UNP A1E8I9
C	367	HIS	-	expression tag	UNP A1E8I9
C	368	HIS	-	expression tag	UNP A1E8I9
C	369	HIS	-	expression tag	UNP A1E8I9
D	36	ALA	THR	engineered mutation	UNP A1E8I9
D	362	LEU	-	expression tag	UNP A1E8I9
D	363	GLU	-	expression tag	UNP A1E8I9
D	364	HIS	-	expression tag	UNP A1E8I9
D	365	HIS	-	expression tag	UNP A1E8I9
D	366	HIS	-	expression tag	UNP A1E8I9
D	367	HIS	-	expression tag	UNP A1E8I9
D	368	HIS	-	expression tag	UNP A1E8I9
D	369	HIS	-	expression tag	UNP A1E8I9

- Molecule 2 is FLAVIN MONONUCLEOTIDE (three-letter code: FMN) (formula: C₁₇H₂₁N₄O₉P).



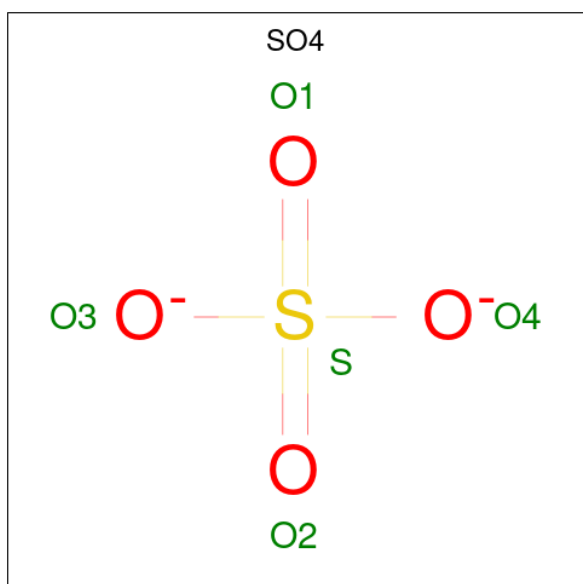
Mol	Chain	Residues	Atoms					ZeroOcc	AltConf
2	A	1	Total	C	N	O	P	0	0
			31	17	4	9	1		
2	B	1	Total	C	N	O	P	0	0
			31	17	4	9	1		
2	C	1	Total	C	N	O	P	0	0
			31	17	4	9	1		
2	D	1	Total	C	N	O	P	0	0
			31	17	4	9	1		

- Molecule 3 is ACETATE ION (three-letter code: ACT) (formula: $C_2H_3O_2$).



Mol	Chain	Residues	Atoms	ZeroOcc	AltConf
3	A	1	Total C O 4 2 2	0	0
3	B	1	Total C O 4 2 2	0	0
3	C	1	Total C O 4 2 2	0	0
3	D	1	Total C O 4 2 2	0	0

- Molecule 4 is SULFATE ION (three-letter code: SO4) (formula: O_4S).



Mol	Chain	Residues	Atoms	ZeroOcc	AltConf
4	A	1	Total O S 5 4 1	0	0
4	A	1	Total O S 5 4 1	0	0
4	B	1	Total O S 5 4 1	0	0
4	B	1	Total O S 5 4 1	0	0
4	C	1	Total O S 5 4 1	0	0
4	C	1	Total O S 5 4 1	0	0
4	C	1	Total O S 5 4 1	0	0
4	D	1	Total O S 5 4 1	0	0
4	D	1	Total O S 5 4 1	0	0
4	D	1	Total O S 5 4 1	0	0

- Molecule 5 is SODIUM ION (three-letter code: NA) (formula: Na).

Mol	Chain	Residues	Atoms	ZeroOcc	AltConf
5	B	2	Total Na 2 2	0	0
5	C	5	Total Na 5 5	0	0

- Molecule 6 is GLYCEROL (three-letter code: GOL) (formula: C₃H₈O₃).



Mol	Chain	Residues	Atoms		ZeroOcc	AltConf
6	C	1	Total	C O	0	0
			6	3 3		

- Molecule 7 is water.

Mol	Chain	Residues	Atoms		ZeroOcc	AltConf
7	A	491	Total	O	0	0
			491	491		
7	B	520	Total	O	0	0
			520	520		
7	C	477	Total	O	0	0
			477	477		
7	D	490	Total	O	0	0
			490	490		

4 Data and refinement statistics i

Property	Value	Source
Space group	P 1 21 1	Depositor
Cell constants a, b, c, α , β , γ	99.47Å 45.15Å 163.74Å 90.00° 107.67° 90.00°	Depositor
Resolution (Å)	29.28 – 1.16 29.28 – 1.16	Depositor EDS
% Data completeness (in resolution range)	95.0 (29.28-1.16) 95.0 (29.28-1.16)	Depositor EDS
R_{merge}	0.06	Depositor
R_{sym}	(Not available)	Depositor
$\langle I/\sigma(I) \rangle$ ¹	1.30 (at 1.16Å)	Xtrriage
Refinement program	REFMAC 5.8.0238	Depositor
R, R_{free}	0.123 , 0.145 0.125 , 0.147	Depositor DCC
R_{free} test set	23053 reflections (5.03%)	wwPDB-VP
Wilson B-factor (Å ²)	10.4	Xtrriage
Anisotropy	0.534	Xtrriage
Bulk solvent k_{sol} (e/Å ³), B_{sol} (Å ²)	0.34 , 26.1	EDS
L-test for twinning ²	$\langle L \rangle = 0.45$, $\langle L^2 \rangle = 0.28$	Xtrriage
Estimated twinning fraction	0.448 for h,-k,-h-l	Xtrriage
Reported twinning fraction	0.534 for H, K, L 0.466 for -H, -K, H+L	Depositor
Outliers	13 of 458754 reflections (0.003%)	Xtrriage
F_o, F_c correlation	0.98	EDS
Total number of atoms	13184	wwPDB-VP
Average B, all atoms (Å ²)	13.0	wwPDB-VP

Xtrriage's analysis on translational NCS is as follows: *The analyses of the Patterson function reveals a significant off-origin peak that is 73.31 % of the origin peak, indicating pseudo-translational symmetry. The chance of finding a peak of this or larger height randomly in a structure without pseudo-translational symmetry is equal to 1.8825e-06. The detected translational NCS is most likely also responsible for the elevated intensity ratio.*

¹Intensities estimated from amplitudes.

²Theoretical values of $\langle |L| \rangle$, $\langle L^2 \rangle$ for acentric reflections are 0.5, 0.333 respectively for untwinned datasets, and 0.375, 0.2 for perfectly twinned datasets.

5 Model quality [i](#)

5.1 Standard geometry [i](#)

Bond lengths and bond angles in the following residue types are not validated in this section: FMN, NA, ACT, SO4, GOL

The Z score for a bond length (or angle) is the number of standard deviations the observed value is removed from the expected value. A bond length (or angle) with $|Z| > 5$ is considered an outlier worth inspection. RMSZ is the root-mean-square of all Z scores of the bond lengths (or angles).

Mol	Chain	Bond lengths		Bond angles	
		RMSZ	# Z >5	RMSZ	# Z >5
1	A	0.77	1/2820 (0.0%)	0.96	4/3835 (0.1%)
1	B	0.81	3/2822 (0.1%)	1.04	10/3837 (0.3%)
1	C	0.76	0/2822	0.96	6/3837 (0.2%)
1	D	0.75	0/2811	0.96	5/3823 (0.1%)
All	All	0.77	4/11275 (0.0%)	0.98	25/15332 (0.2%)

Chiral center outliers are detected by calculating the chiral volume of a chiral center and verifying if the center is modelled as a planar moiety or with the opposite hand. A planarity outlier is detected by checking planarity of atoms in a peptide group, atoms in a mainchain group or atoms of a sidechain that are expected to be planar.

Mol	Chain	#Chirality outliers	#Planarity outliers
1	A	0	2
1	B	0	3
1	C	0	2
1	D	0	1
All	All	0	8

All (4) bond length outliers are listed below:

Mol	Chain	Res	Type	Atoms	Z	Observed(Å)	Ideal(Å)
1	B	240	GLU	CD-OE1	8.37	1.34	1.25
1	B	79	GLU	CD-OE2	-6.82	1.18	1.25
1	A	79	GLU	CD-OE2	-5.40	1.19	1.25
1	B	181	GLU	CD-OE2	5.06	1.31	1.25

All (25) bond angle outliers are listed below:

Mol	Chain	Res	Type	Atoms	Z	Observed(°)	Ideal(°)
1	B	61	ARG	NE-CZ-NH2	10.20	125.40	120.30

Continued on next page...

Continued from previous page...

Mol	Chain	Res	Type	Atoms	Z	Observed(°)	Ideal(°)
1	B	220[A]	ARG	NE-CZ-NH2	-10.10	115.25	120.30
1	B	220[B]	ARG	NE-CZ-NH2	-10.10	115.25	120.30
1	B	220[A]	ARG	NE-CZ-NH1	9.45	125.03	120.30
1	B	220[B]	ARG	NE-CZ-NH1	9.45	125.03	120.30
1	B	18	ARG	NE-CZ-NH2	-7.26	116.67	120.30
1	B	211	ARG	NE-CZ-NH2	-7.26	116.67	120.30
1	C	211	ARG	NE-CZ-NH2	-6.62	116.99	120.30
1	A	328	PHE	CB-CG-CD1	6.22	125.16	120.80
1	D	18	ARG	NE-CZ-NH2	-6.13	117.23	120.30
1	B	287	ARG	NE-CZ-NH2	-6.02	117.29	120.30
1	A	328	PHE	CB-CG-CD2	-5.58	116.89	120.80
1	C	211	ARG	NE-CZ-NH1	5.55	123.08	120.30
1	B	328	PHE	CB-CG-CD2	-5.45	116.99	120.80
1	A	220	ARG	NE-CZ-NH1	5.41	123.01	120.30
1	D	184	ARG	NE-CZ-NH2	-5.34	117.63	120.30
1	D	220	ARG	NE-CZ-NH1	5.21	122.91	120.30
1	B	328	PHE	CB-CG-CD1	5.21	124.45	120.80
1	C	220[A]	ARG	NE-CZ-NH2	-5.17	117.71	120.30
1	C	220[B]	ARG	NE-CZ-NH2	-5.17	117.71	120.30
1	C	295	TYR	CB-CG-CD2	5.17	124.10	121.00
1	C	201	ARG	NE-CZ-NH1	-5.13	117.74	120.30
1	D	203	ARG	NE-CZ-NH2	-5.12	117.74	120.30
1	A	282	ARG	NE-CZ-NH2	-5.06	117.77	120.30
1	D	211	ARG	NE-CZ-NH2	-5.01	117.80	120.30

There are no chirality outliers.

All (8) planarity outliers are listed below:

Mol	Chain	Res	Type	Group
1	A	184	ARG	Sidechain
1	A	211	ARG	Sidechain
1	B	184	ARG	Sidechain
1	B	201	ARG	Sidechain
1	B	261	ARG	Sidechain
1	C	184	ARG	Sidechain
1	C	353	TYR	Sidechain
1	D	184	ARG	Sidechain

5.2 Too-close contacts [i](#)

In the following table, the Non-H and H(model) columns list the number of non-hydrogen atoms and hydrogen atoms in the chain respectively. The H(added) column lists the number of hydrogen atoms added and optimized by MolProbity. The Clashes column lists the number of clashes within the asymmetric unit, whereas Symm-Clashes lists symmetry-related clashes.

Mol	Chain	Non-H	H(model)	H(added)	Clashes	Symm-Clashes
1	A	2752	0	2696	9	0
1	B	2754	0	2703	10	0
1	C	2754	0	2703	6	0
1	D	2743	0	2691	17	0
2	A	31	0	19	1	0
2	B	31	0	19	1	0
2	C	31	0	19	1	0
2	D	31	0	19	1	0
3	A	4	0	3	2	0
3	B	4	0	3	1	0
3	C	4	0	3	1	0
3	D	4	0	3	1	0
4	A	10	0	0	1	0
4	B	10	0	0	1	0
4	C	15	0	0	0	0
4	D	15	0	0	5	0
5	B	2	0	0	0	0
5	C	5	0	0	0	0
6	C	6	0	8	0	0
7	A	491	0	0	1	0
7	B	520	0	0	1	0
7	C	477	0	0	2	0
7	D	490	0	0	5	0
All	All	13184	0	10889	47	0

The all-atom clashscore is defined as the number of clashes found per 1000 atoms (including hydrogen atoms). The all-atom clashscore for this structure is 2.

All (47) close contacts within the same asymmetric unit are listed below, sorted by their clash magnitude.

Atom-1	Atom-2	Interatomic distance (Å)	Clash overlap (Å)
4:D:405:SO4:O1	7:D:501:HOH:O	1.58	1.20
1:B:193:GLU:OE1	7:B:501:HOH:O	1.75	1.03
1:A:87:GLY:O	1:A:91:LYS:HD2	1.74	0.86
1:C:317:LYS:HE2	7:C:531:HOH:O	1.77	0.84

Continued on next page...

Continued from previous page...

Atom-1	Atom-2	Interatomic distance (Å)	Clash overlap (Å)
4:A:404:SO4:O1	7:A:501:HOH:O	1.97	0.83
1:D:197:VAL:HG23	1:D:199:GLU:HG2	1.70	0.72
4:D:405:SO4:O2	7:D:502:HOH:O	2.09	0.70
1:B:38:ILE:HD11	1:B:347:PRO:HB3	1.77	0.66
1:A:175:ASN:ND2	3:A:402:ACT:O	2.32	0.61
1:D:308:LYS:NZ	7:D:504:HOH:O	2.34	0.60
1:D:340:LYS:HE3	1:D:340:LYS:HA	1.85	0.59
1:D:75[A]:ASP:OD2	4:D:403:SO4:O1	2.22	0.58
1:A:1:MET:HB2	1:A:2:PRO:HD3	1.88	0.55
1:D:275:PRO:O	1:D:277:LEU:HD12	2.09	0.53
1:D:277:LEU:HD12	1:D:277:LEU:N	2.25	0.52
1:C:280:GLN:NE2	7:C:502:HOH:O	2.43	0.52
1:B:330:ARG:CZ	1:B:332:ILE:HD11	2.39	0.52
1:D:348:GLU:HG3	7:D:520:HOH:O	2.09	0.52
1:D:75[A]:ASP:OD1	4:D:403:SO4:O3	2.28	0.51
1:D:75[A]:ASP:CG	4:D:403:SO4:O3	2.51	0.49
1:D:56:ALA:HB1	1:D:100:TRP:CD2	2.48	0.48
1:A:56:ALA:HB1	1:A:100:TRP:CD2	2.48	0.48
1:B:56:ALA:HB1	1:B:100:TRP:CD2	2.49	0.47
1:B:352:ASP:HB2	1:D:296:THR:HB	1.96	0.47
1:A:175:ASN:HD22	3:A:402:ACT:C	2.27	0.47
2:D:401:FMN:C4A	3:D:402:ACT:H3	2.45	0.47
1:B:31:LYS:HE2	1:B:31:LYS:HB2	1.79	0.46
1:B:213:ILE:HG12	1:B:218:ALA:HA	1.98	0.46
1:C:56:ALA:HB1	1:C:100:TRP:CD2	2.51	0.46
1:D:127:VAL:HB	1:D:136:PHE:CE1	2.52	0.45
1:D:287:ARG:HB3	1:D:288:PRO:CD	2.46	0.45
1:A:343:TYR:CE1	2:A:401:FMN:HM72	2.52	0.44
1:B:287:ARG:HB3	1:B:288:PRO:CD	2.47	0.44
1:D:277:LEU:HD11	7:D:706:HOH:O	2.17	0.44
1:C:127:VAL:HB	1:C:136:PHE:CE1	2.53	0.44
1:C:287:ARG:HB3	1:C:288:PRO:CD	2.48	0.43
1:A:213:ILE:HG12	1:A:218:ALA:HA	2.01	0.43
1:A:239:PRO:HB2	1:A:277:LEU:HD11	2.01	0.43
1:D:1:MET:CB	1:D:2:PRO:CD	2.96	0.43
1:D:277:LEU:N	1:D:277:LEU:CD1	2.82	0.43
2:B:401:FMN:C4	3:B:402:ACT:H2	2.49	0.42
2:C:401:FMN:C4	3:C:402:ACT:H3	2.50	0.42
1:A:31:LYS:HG3	1:A:130:TYR:CZ	2.55	0.41
1:B:1:MET:N	1:B:2:PRO:HD2	2.35	0.41
1:B:143:ASP:HB2	4:B:403:SO4:O1	2.20	0.41

Continued on next page...

Continued from previous page...

Atom-1	Atom-2	Interatomic distance (Å)	Clash overlap (Å)
1:C:38:ILE:HD11	1:C:347:PRO:HB3	2.03	0.41
1:D:201:ARG:HH11	1:D:201:ARG:HD2	1.73	0.41

There are no symmetry-related clashes.

5.3 Torsion angles [i](#)

5.3.1 Protein backbone [i](#)

In the following table, the Percentiles column shows the percent Ramachandran outliers of the chain as a percentile score with respect to all X-ray entries followed by that with respect to entries of similar resolution.

The Analysed column shows the number of residues for which the backbone conformation was analysed, and the total number of residues.

Mol	Chain	Analysed	Favoured	Allowed	Outliers	Percentiles
1	A	356/369 (96%)	347 (98%)	8 (2%)	1 (0%)	41 16
1	B	356/369 (96%)	346 (97%)	9 (2%)	1 (0%)	41 16
1	C	356/369 (96%)	346 (97%)	9 (2%)	1 (0%)	41 16
1	D	355/369 (96%)	344 (97%)	10 (3%)	1 (0%)	41 16
All	All	1423/1476 (96%)	1383 (97%)	36 (2%)	4 (0%)	41 16

All (4) Ramachandran outliers are listed below:

Mol	Chain	Res	Type
1	A	293	GLN
1	B	293	GLN
1	C	293	GLN
1	D	293	GLN

5.3.2 Protein sidechains [i](#)

In the following table, the Percentiles column shows the percent sidechain outliers of the chain as a percentile score with respect to all X-ray entries followed by that with respect to entries of similar resolution.

The Analysed column shows the number of residues for which the sidechain conformation was analysed, and the total number of residues.

Mol	Chain	Analysed	Rotameric	Outliers	Percentiles	
1	A	282/292 (97%)	281 (100%)	1 (0%)	91	75
1	B	282/292 (97%)	282 (100%)	0	100	100
1	C	282/292 (97%)	281 (100%)	1 (0%)	91	75
1	D	281/292 (96%)	278 (99%)	3 (1%)	73	40
All	All	1127/1168 (96%)	1122 (100%)	5 (0%)	91	75

All (5) residues with a non-rotameric sidechain are listed below:

Mol	Chain	Res	Type
1	A	91	LYS
1	C	172	HIS
1	D	172	HIS
1	D	199	GLU
1	D	340	LYS

Sometimes sidechains can be flipped to improve hydrogen bonding and reduce clashes. All (1) such sidechains are listed below:

Mol	Chain	Res	Type
1	C	266	ASN

5.3.3 RNA [i](#)

There are no RNA molecules in this entry.

5.4 Non-standard residues in protein, DNA, RNA chains [i](#)

There are no non-standard protein/DNA/RNA residues in this entry.

5.5 Carbohydrates [i](#)

There are no monosaccharides in this entry.

5.6 Ligand geometry [i](#)

Of 26 ligands modelled in this entry, 7 are monoatomic - leaving 19 for Mogul analysis.

In the following table, the Counts columns list the number of bonds (or angles) for which Mogul statistics could be retrieved, the number of bonds (or angles) that are observed in the model and

the number of bonds (or angles) that are defined in the Chemical Component Dictionary. The Link column lists molecule types, if any, to which the group is linked. The Z score for a bond length (or angle) is the number of standard deviations the observed value is removed from the expected value. A bond length (or angle) with $|Z| > 2$ is considered an outlier worth inspection. RMSZ is the root-mean-square of all Z scores of the bond lengths (or angles).

Mol	Type	Chain	Res	Link	Bond lengths			Bond angles		
					Counts	RMSZ	# Z > 2	Counts	RMSZ	# Z > 2
4	SO4	C	403	-	4,4,4	0.40	0	6,6,6	0.36	0
4	SO4	B	403	-	4,4,4	0.41	0	6,6,6	0.29	0
4	SO4	D	403	-	4,4,4	0.30	0	6,6,6	0.31	0
4	SO4	A	403	-	4,4,4	0.44	0	6,6,6	0.31	0
2	FMN	A	401	-	33,33,33	0.93	1 (3%)	48,50,50	1.21	6 (12%)
2	FMN	B	401	-	33,33,33	1.05	1 (3%)	48,50,50	1.11	3 (6%)
4	SO4	B	404	-	4,4,4	0.24	0	6,6,6	0.24	0
4	SO4	D	404	-	4,4,4	0.47	0	6,6,6	0.29	0
4	SO4	D	405	-	4,4,4	0.66	0	6,6,6	0.18	0
4	SO4	A	404	-	4,4,4	0.61	0	6,6,6	0.15	0
6	GOL	C	411	-	5,5,5	0.11	0	5,5,5	0.65	0
2	FMN	D	401	-	33,33,33	1.14	2 (6%)	48,50,50	1.18	4 (8%)
3	ACT	C	402	-	3,3,3	0.71	0	3,3,3	0.26	0
3	ACT	A	402	-	3,3,3	1.03	0	3,3,3	0.81	0
2	FMN	C	401	-	33,33,33	1.15	1 (3%)	48,50,50	1.15	4 (8%)
3	ACT	B	402	-	3,3,3	1.48	1 (33%)	3,3,3	0.86	0
4	SO4	C	404	5	4,4,4	0.22	0	6,6,6	0.28	0
3	ACT	D	402	-	3,3,3	0.94	0	3,3,3	1.45	1 (33%)
4	SO4	C	405	-	4,4,4	0.35	0	6,6,6	0.05	0

In the following table, the Chirals column lists the number of chiral outliers, the number of chiral centers analysed, the number of these observed in the model and the number defined in the Chemical Component Dictionary. Similar counts are reported in the Torsion and Rings columns. '-' means no outliers of that kind were identified.

Mol	Type	Chain	Res	Link	Chirals	Torsions	Rings
6	GOL	C	411	-	-	4/4/4/4	-
2	FMN	C	401	-	-	1/18/18/18	0/3/3/3
2	FMN	D	401	-	-	1/18/18/18	0/3/3/3
2	FMN	A	401	-	-	1/18/18/18	0/3/3/3
2	FMN	B	401	-	-	1/18/18/18	0/3/3/3

All (6) bond length outliers are listed below:

Mol	Chain	Res	Type	Atoms	Z	Observed(Å)	Ideal(Å)
2	D	401	FMN	C5'-C4'	3.35	1.56	1.51
2	C	401	FMN	C6-C7	-2.96	1.35	1.39
2	D	401	FMN	C4A-N5	2.45	1.35	1.30
3	B	402	ACT	OXT-C	-2.41	1.19	1.30
2	B	401	FMN	C5A-N5	-2.39	1.34	1.39
2	A	401	FMN	C1'-N10	-2.14	1.42	1.48

All (18) bond angle outliers are listed below:

Mol	Chain	Res	Type	Atoms	Z	Observed(°)	Ideal(°)
2	A	401	FMN	C6-C7-C8	-3.00	115.36	119.67
2	B	401	FMN	C4-C4A-N5	2.69	122.06	118.23
2	D	401	FMN	C9A-C5A-N5	-2.68	119.51	122.43
2	C	401	FMN	C9A-C9-C8	2.38	124.09	119.30
2	D	401	FMN	C8M-C8-C9	2.36	123.85	119.49
2	A	401	FMN	C9A-C9-C8	2.35	124.03	119.30
2	D	401	FMN	O3'-C3'-C2'	-2.33	103.17	108.81
2	B	401	FMN	C5A-C6-C7	2.31	124.95	120.71
2	C	401	FMN	C6-C5A-N5	2.29	122.52	118.51
2	A	401	FMN	C4A-C10-N10	2.27	119.80	116.48
2	C	401	FMN	C9A-C5A-N5	-2.23	120.01	122.43
2	C	401	FMN	C9-C8-C7	-2.20	116.52	119.67
2	A	401	FMN	O2'-C2'-C1'	2.19	115.09	109.80
2	D	401	FMN	C9A-C9-C8	2.13	123.59	119.30
2	A	401	FMN	C9A-N10-C10	-2.03	117.60	120.77
2	B	401	FMN	C7M-C7-C6	2.02	123.22	119.49
3	D	402	ACT	O-C-CH3	-2.01	114.52	122.33
2	A	401	FMN	C5A-C9A-N10	2.00	120.02	117.95

There are no chirality outliers.

All (8) torsion outliers are listed below:

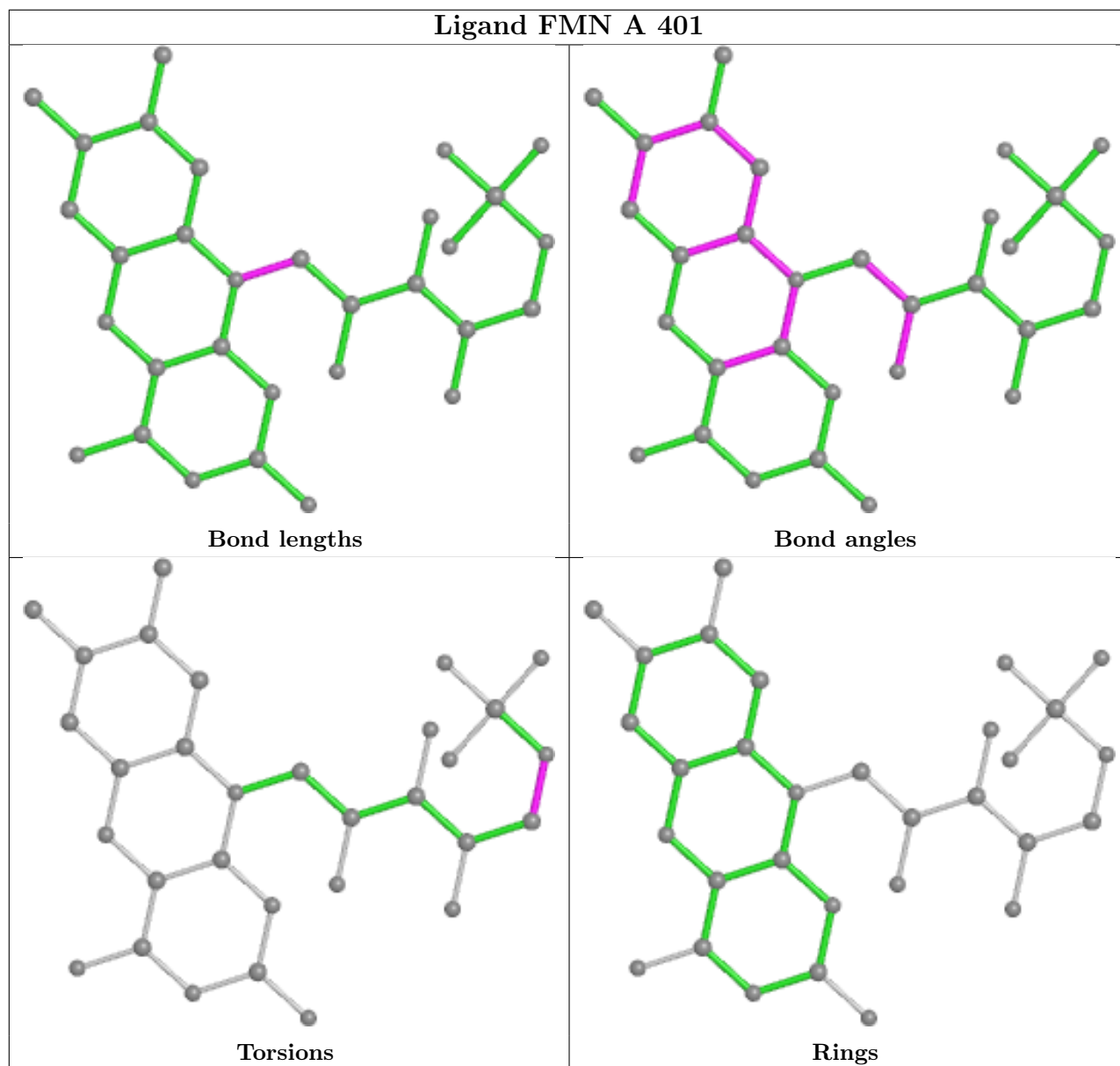
Mol	Chain	Res	Type	Atoms
6	C	411	GOL	O1-C1-C2-C3
6	C	411	GOL	O1-C1-C2-O2
6	C	411	GOL	O2-C2-C3-O3
2	A	401	FMN	C4'-C5'-O5'-P
2	C	401	FMN	C4'-C5'-O5'-P
2	D	401	FMN	C4'-C5'-O5'-P
2	B	401	FMN	C4'-C5'-O5'-P
6	C	411	GOL	C1-C2-C3-O3

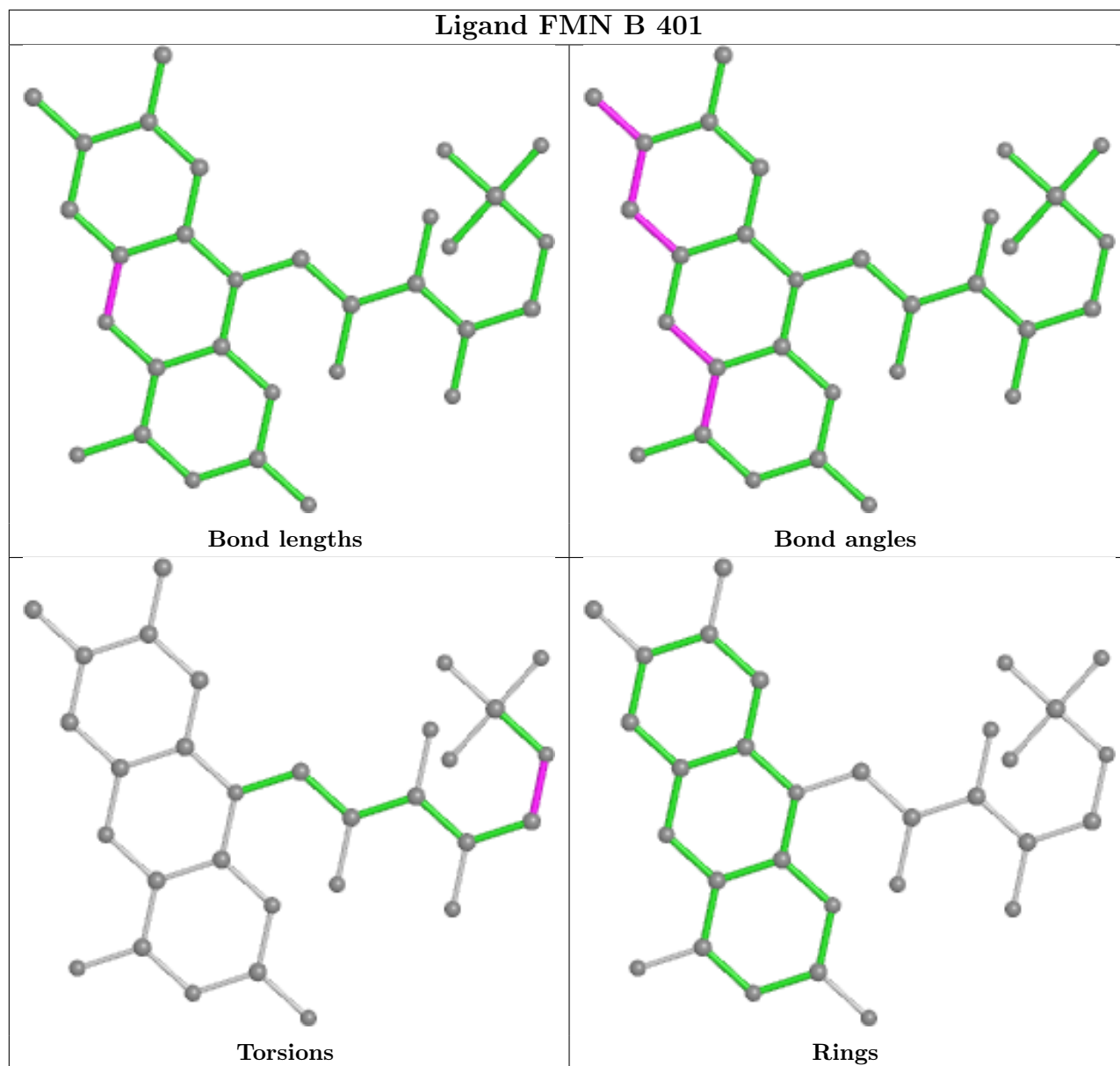
There are no ring outliers.

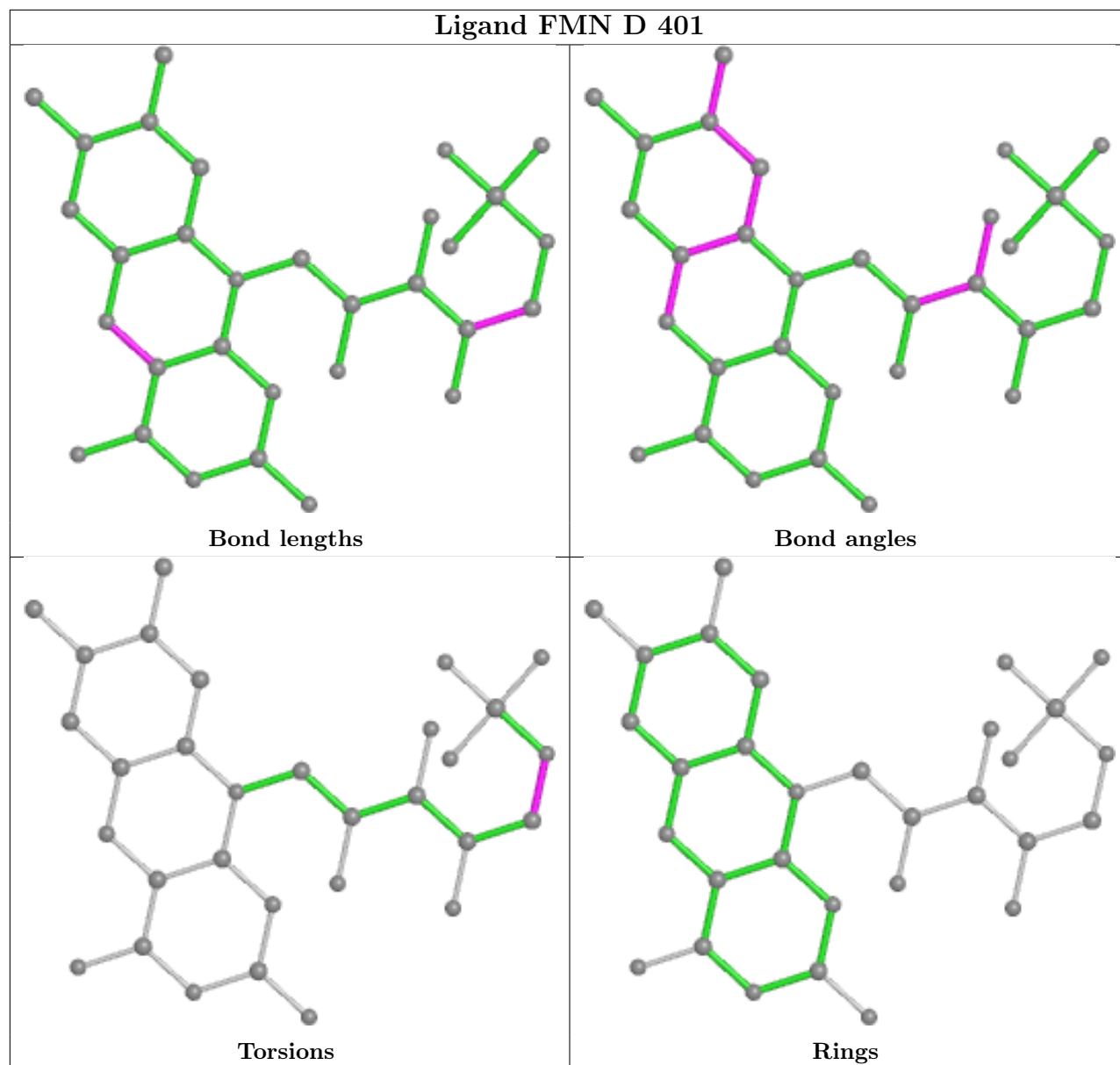
12 monomers are involved in 13 short contacts:

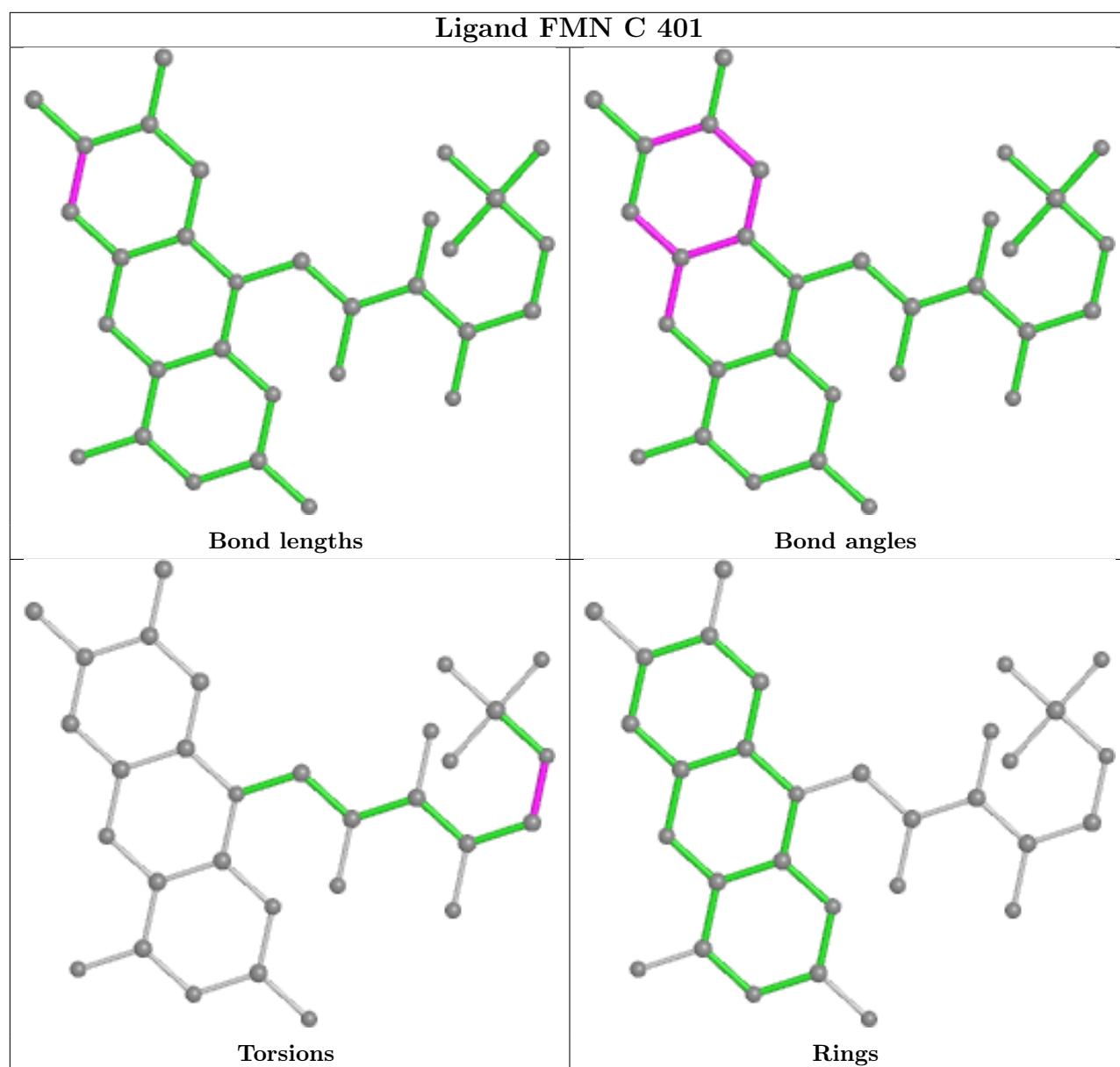
Mol	Chain	Res	Type	Clashes	Symm-Clashes
4	B	403	SO4	1	0
4	D	403	SO4	3	0
2	A	401	FMN	1	0
2	B	401	FMN	1	0
4	D	405	SO4	2	0
4	A	404	SO4	1	0
2	D	401	FMN	1	0
3	C	402	ACT	1	0
3	A	402	ACT	2	0
2	C	401	FMN	1	0
3	B	402	ACT	1	0
3	D	402	ACT	1	0

The following is a two-dimensional graphical depiction of Mogul quality analysis of bond lengths, bond angles, torsion angles, and ring geometry for all instances of the Ligand of Interest. In addition, ligands with molecular weight > 250 and outliers as shown on the validation Tables will also be included. For torsion angles, if less than 5% of the Mogul distribution of torsion angles is within 10 degrees of the torsion angle in question, then that torsion angle is considered an outlier. Any bond that is central to one or more torsion angles identified as an outlier by Mogul will be highlighted in the graph. For rings, the root-mean-square deviation (RMSD) between the ring in question and similar rings identified by Mogul is calculated over all ring torsion angles. If the average RMSD is greater than 60 degrees and the minimal RMSD between the ring in question and any Mogul-identified rings is also greater than 60 degrees, then that ring is considered an outlier. The outliers are highlighted in purple. The color gray indicates Mogul did not find sufficient equivalents in the CSD to analyse the geometry.









5.7 Other polymers [\(i\)](#)

There are no such residues in this entry.

5.8 Polymer linkage issues [\(i\)](#)

There are no chain breaks in this entry.

6 Fit of model and data [i](#)

6.1 Protein, DNA and RNA chains [i](#)

In the following table, the column labelled ‘#RSRZ > 2’ contains the number (and percentage) of RSRZ outliers, followed by percent RSRZ outliers for the chain as percentile scores relative to all X-ray entries and entries of similar resolution. The OWAB column contains the minimum, median, 95th percentile and maximum values of the occupancy-weighted average B-factor per residue. The column labelled ‘Q < 0.9’ lists the number of (and percentage) of residues with an average occupancy less than 0.9.

Mol	Chain	Analysed	<RSRZ>	#RSRZ>2	OWAB(Å ²)	Q<0.9
1	A	356/369 (96%)	0.20	5 (1%) 75 75	8, 11, 19, 43	0
1	B	356/369 (96%)	0.17	3 (0%) 86 86	6, 10, 17, 43	0
1	C	356/369 (96%)	0.22	4 (1%) 80 80	7, 10, 17, 44	0
1	D	356/369 (96%)	0.20	1 (0%) 94 94	8, 11, 18, 57	0
All	All	1424/1476 (96%)	0.20	13 (0%) 84 84	6, 11, 18, 57	0

All (13) RSRZ outliers are listed below:

Mol	Chain	Res	Type	RSRZ
1	C	1	MET	4.2
1	A	1	MET	3.8
1	B	1	MET	3.2
1	C	125	GLY	2.6
1	A	2	PRO	2.3
1	C	133	LYS	2.2
1	B	131	GLU	2.2
1	D	1	MET	2.1
1	A	75[A]	ASP	2.1
1	A	128	HIS	2.1
1	C	131	GLU	2.1
1	B	356	ALA	2.1
1	A	106	VAL	2.0

6.2 Non-standard residues in protein, DNA, RNA chains [i](#)

There are no non-standard protein/DNA/RNA residues in this entry.

6.3 Carbohydrates [i](#)

There are no monosaccharides in this entry.

6.4 Ligands [i](#)

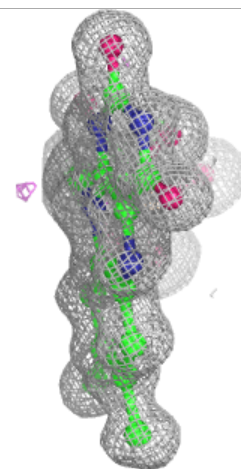
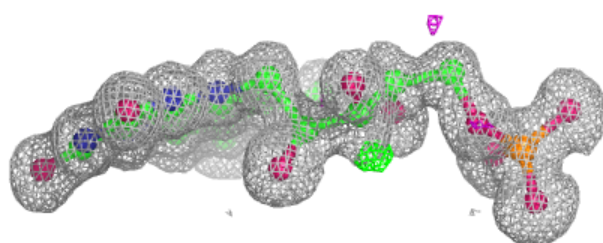
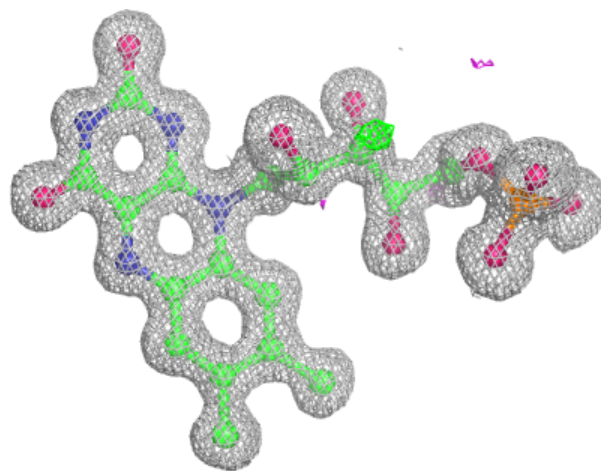
In the following table, the Atoms column lists the number of modelled atoms in the group and the number defined in the chemical component dictionary. The B-factors column lists the minimum, median, 95th percentile and maximum values of B factors of atoms in the group. The column labelled 'Q< 0.9' lists the number of atoms with occupancy less than 0.9.

Mol	Type	Chain	Res	Atoms	RSCC	RSR	B-factors(Å ²)	Q<0.9
4	SO4	C	405	5/5	0.70	0.31	47,49,50,51	0
6	GOL	C	411	6/6	0.77	0.13	18,20,20,25	0
5	NA	C	410	1/1	0.79	0.12	37,37,37,37	0
5	NA	C	408	1/1	0.80	0.21	34,34,34,34	0
3	ACT	A	402	4/4	0.81	0.19	14,17,20,23	0
3	ACT	D	402	4/4	0.81	0.18	14,15,20,24	0
4	SO4	D	405	5/5	0.92	0.15	12,23,28,29	0
4	SO4	A	404	5/5	0.92	0.15	14,24,27,30	0
3	ACT	C	402	4/4	0.93	0.15	11,13,15,15	0
4	SO4	B	404	5/5	0.93	0.23	15,19,20,23	0
5	NA	C	406	1/1	0.93	0.33	36,36,36,36	0
3	ACT	B	402	4/4	0.94	0.17	10,13,15,16	0
4	SO4	D	404	5/5	0.95	0.26	18,19,22,27	0
4	SO4	C	404	5/5	0.95	0.15	19,20,23,25	0
4	SO4	A	403	5/5	0.96	0.28	17,19,22,23	0
5	NA	B	405	1/1	0.96	0.13	32,32,32,32	0
4	SO4	B	403	5/5	0.96	0.10	14,15,21,23	0
4	SO4	C	403	5/5	0.97	0.11	14,16,22,24	0
2	FMN	B	401	31/31	0.98	0.07	6,7,9,9	0
5	NA	B	406	1/1	0.98	0.06	18,18,18,18	0
2	FMN	C	401	31/31	0.98	0.07	7,8,9,10	0
4	SO4	D	403	5/5	0.98	0.11	17,17,20,20	0
2	FMN	D	401	31/31	0.98	0.07	7,9,10,11	0
2	FMN	A	401	31/31	0.98	0.07	7,8,10,10	0
5	NA	C	407	1/1	0.99	0.08	14,14,14,14	0
5	NA	C	409	1/1	0.99	0.06	15,15,15,15	0

The following is a graphical depiction of the model fit to experimental electron density of all instances of the Ligand of Interest. In addition, ligands with molecular weight > 250 and outliers as shown on the geometry validation Tables will also be included. Each fit is shown from different orientation to approximate a three-dimensional view.

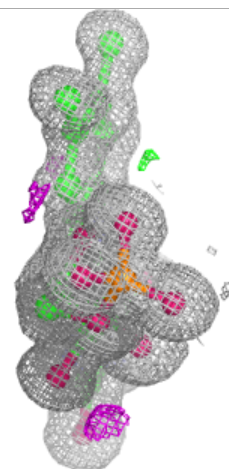
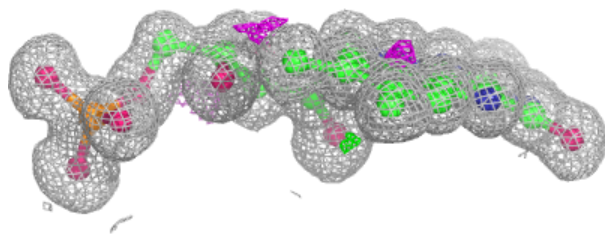
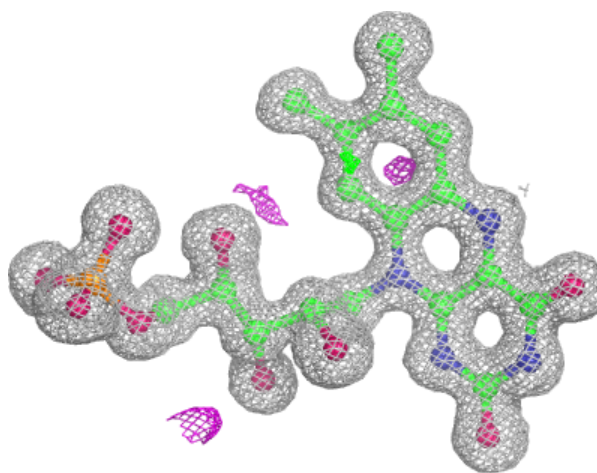
Electron density around FMN B 401:

$2mF_o-DF_c$ (at 0.7 rmsd) in gray
 mF_o-DF_c (at 3 rmsd) in purple (negative)
and green (positive)



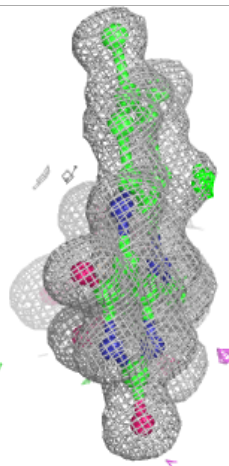
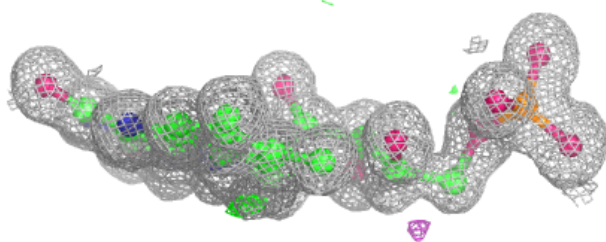
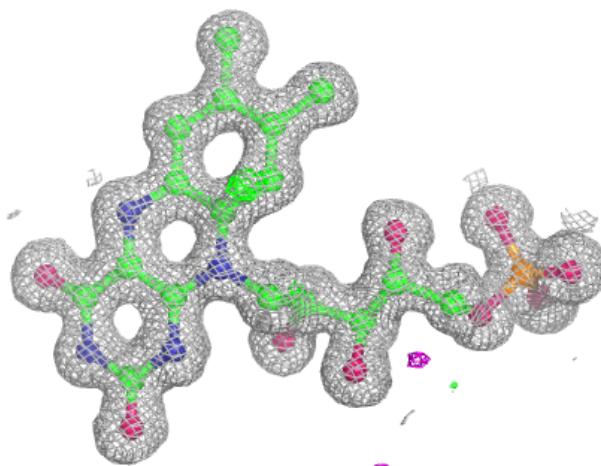
Electron density around FMN C 401:

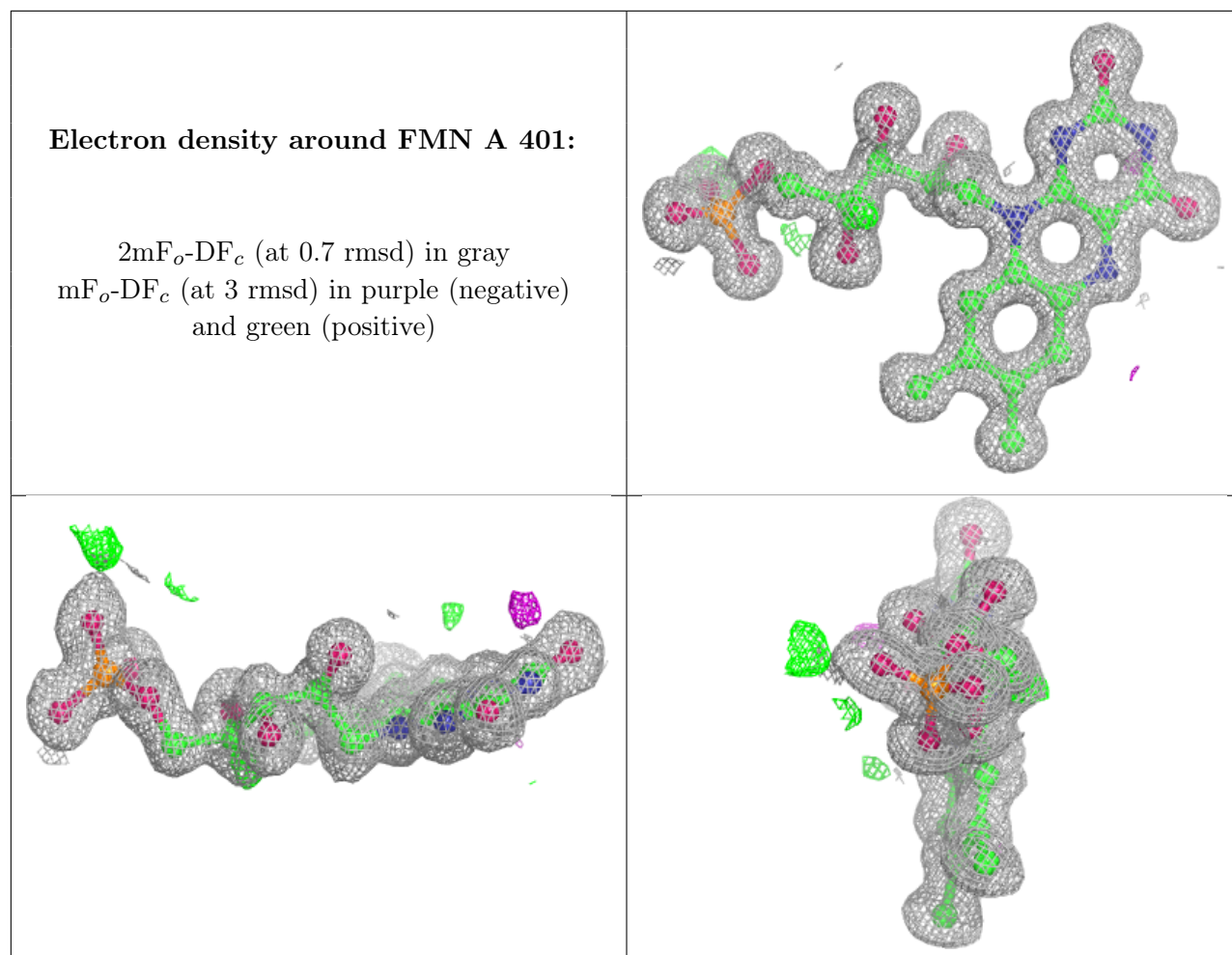
$2mF_o-DF_c$ (at 0.7 rmsd) in gray
 mF_o-DF_c (at 3 rmsd) in purple (negative)
and green (positive)



Electron density around FMN D 401:

$2mF_o-DF_c$ (at 0.7 rmsd) in gray
 mF_o-DF_c (at 3 rmsd) in purple (negative)
and green (positive)





6.5 Other polymers [i](#)

There are no such residues in this entry.