



Full wwPDB EM Validation Report ⓘ

Feb 27, 2024 – 10:36 AM EST

PDB ID : 6UZD
EMDB ID : EMD-20957
Title : Anthrax toxin protective antigen channels bound to edema factor
Authors : Hardenbrook, N.J.; Liu, S.; Zhou, K.; Zhou, Z.H.; Krantz, B.A.
Deposited on : 2019-11-14
Resolution : 3.40 Å (reported)

This is a Full wwPDB EM Validation Report for a publicly released PDB entry.

We welcome your comments at validation@mail.wwpdb.org

A user guide is available at

<https://www.wwpdb.org/validation/2017/EMValidationReportHelp>

with specific help available everywhere you see the ⓘ symbol.

The types of validation reports are described at

<http://www.wwpdb.org/validation/2017/FAQs#types>.

The following versions of software and data (see [references ⓘ](#)) were used in the production of this report:

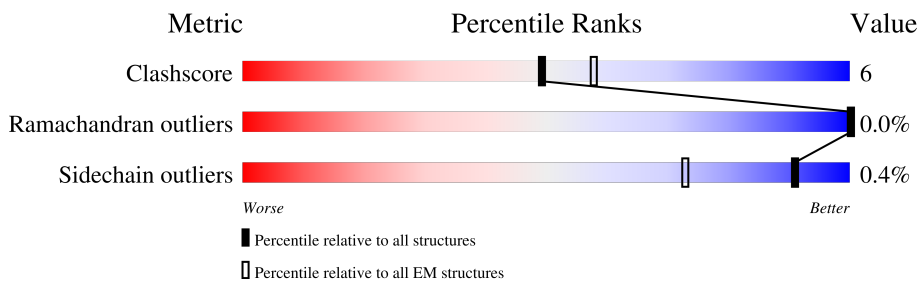
EMDB validation analysis : 0.0.1.dev70
MolProbity : 4.02b-467
Percentile statistics : 20191225.v01 (using entries in the PDB archive December 25th 2019)
MapQ : 1.9.13
Ideal geometry (proteins) : Engh & Huber (2001)
Ideal geometry (DNA, RNA) : Parkinson et al. (1996)
Validation Pipeline (wwPDB-VP) : 2.36

1 Overall quality at a glance i

The following experimental techniques were used to determine the structure:
ELECTRON MICROSCOPY

The reported resolution of this entry is 3.40 Å.

Percentile scores (ranging between 0-100) for global validation metrics of the entry are shown in the following graphic. The table shows the number of entries on which the scores are based.




Metric	Whole archive (#Entries)	EM structures (#Entries)
Clashscore	158937	4297
Ramachandran outliers	154571	4023
Sidechain outliers	154315	3826

The table below summarises the geometric issues observed across the polymeric chains and their fit to the map. The red, orange, yellow and green segments of the bar indicate the fraction of residues that contain outliers for ≥ 3 , 2, 1 and 0 types of geometric quality criteria respectively. A grey segment represents the fraction of residues that are not modelled. The numeric value for each fraction is indicated below the corresponding segment, with a dot representing fractions $\leq 5\%$. The upper red bar (where present) indicates the fraction of residues that have poor fit to the EM map (all-atom inclusion $< 40\%$). The numeric value is given above the bar.

Mol	Chain	Length	Quality of chain
1	A	735	
1	B	735	
1	C	735	
1	D	735	
1	E	735	
1	F	735	
1	G	735	
2	H	767	

Continued on next page...

Continued from previous page...

Mol	Chain	Length	Quality of chain
2	I	767	 <p>A horizontal bar chart representing the quality of chain. The bar is divided into four segments: a red segment (39%), a green segment (74%), a yellow segment (19%), and a grey segment (6%). The percentages are labeled above or below the corresponding segments.</p>

2 Entry composition [i](#)

There are 3 unique types of molecules in this entry. The entry contains 42822 atoms, of which 0 are hydrogens and 0 are deuteriums.

In the tables below, the AltConf column contains the number of residues with at least one atom in alternate conformation and the Trace column contains the number of residues modelled with at most 2 atoms.

- Molecule 1 is a protein called Protective antigen.

Mol	Chain	Residues	Atoms					AltConf	Trace
			Total	C	N	O	S		
1	A	562	4438	2772	765	895	6	0	0
1	B	562	4438	2772	765	895	6	0	0
1	C	562	4438	2772	765	895	6	0	0
1	D	562	4438	2772	765	895	6	0	0
1	E	562	4438	2772	765	895	6	0	0
1	F	562	4438	2772	765	895	6	0	0
1	G	562	4438	2772	765	895	6	0	0

- Molecule 2 is a protein called Calmodulin-sensitive adenylate cyclase.

Mol	Chain	Residues	Atoms					AltConf	Trace
			Total	C	N	O	S		
2	H	720	5871	3749	975	1141	6	0	0
2	I	720	5871	3749	975	1141	6	0	0

- Molecule 3 is CALCIUM ION (three-letter code: CA) (formula: Ca).

Mol	Chain	Residues	Atoms		AltConf
3	A	2	Total 2	Ca 2	0
3	B	2	Total 2	Ca 2	0
3	C	2	Total 2	Ca 2	0
3	D	2	Total 2	Ca 2	0

Continued on next page...

Continued from previous page...

Mol	Chain	Residues	Atoms		AltConf
3	E	2	Total 2	Ca 2	0
3	F	2	Total 2	Ca 2	0
3	G	2	Total 2	Ca 2	0



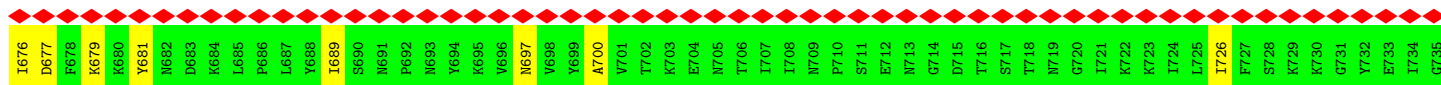
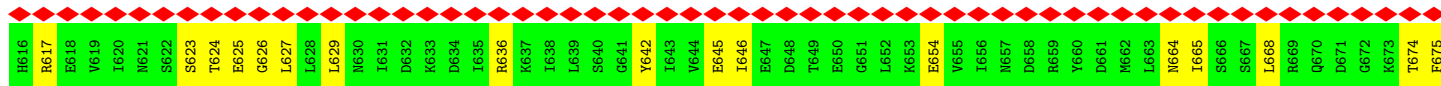
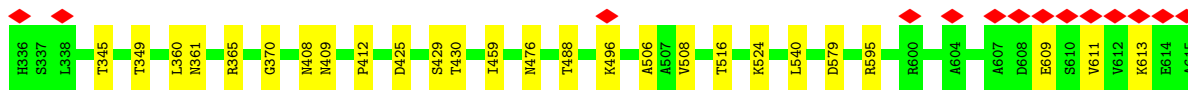
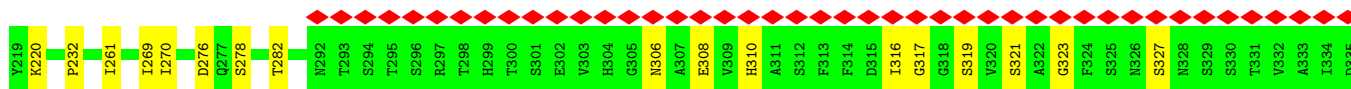
• Molecule 1: Protective antigen



GLU VAL LYS GLN ASP ARG LEU LEU LYS ASN VAL ASP LYS SER SER SER GLN GLY THR ASP PHE LEU LEU LEU TYR TYR PHE MET ASP TRP GLN ALA PRO MET VAL VAL THR THR SER SER THR GLY ASP LEU LEU ILE PRO SER SER ARG LEU LEU GLU LEU ASN ARG ILE LEU TYR PRO GLN SER ILE GLU ASN LYS ILE GLN ASN LYS TYR PHE

GLN SER ALA ILE TRP SER ASN ARG LEU LEU PHE ILE LYS VAL ASP VAL LYS LYS SER SER ASP ASP TYR THR THR ASP PHE LEU LEU ALA THR THR SER ALA LEU TYR TYR ALA ASP PHE ASP HIS VAL VAL ASP ASP MET THR THR ASP MET TRP TRP ASP VAL VAL ASP ASP MET VAL VAL THR THR SER SER THR LYS LYS ALA ALA PRO MET VAL VAL THR THR SER SER THR GLY ASP LEU LEU ILE PRO SER SER ARG LEU LEU GLU LEU ASN ARG ILE LEU TYR PRO GLN SER ILE GLU ASN LYS ILE GLN ASN LYS TYR PHE

GLN ARG GLU ASN PRO THR THR LYS GLY LEU ASP PHE LYS LYS SER SER ASP ASP TYR THR THR ASP PHE LEU LEU ALA THR THR SER ALA LEU TYR TYR ALA ASP PHE ASP HIS VAL VAL ASP ASP MET THR THR ASP MET TRP TRP ASP VAL VAL ASP ASP MET VAL VAL THR THR SER SER THR LYS LYS ALA ALA PRO MET VAL VAL THR THR SER SER THR GLY ASP LEU LEU ILE PRO SER SER ARG LEU LEU GLU LEU ASN ARG ILE LEU TYR PRO GLN SER ILE GLU ASN LYS ILE GLN ASN LYS TYR PHE



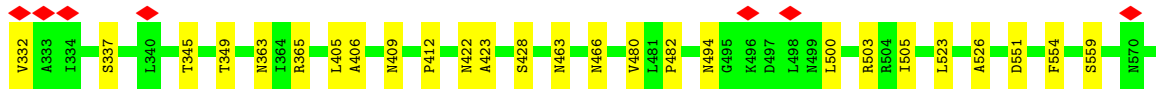
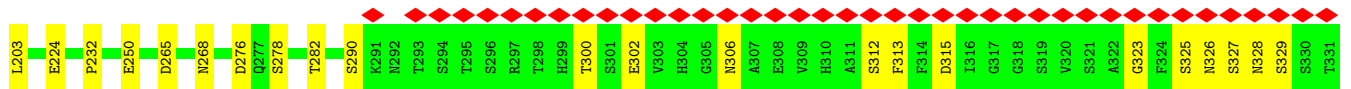
• Molecule 1: Protective antigen

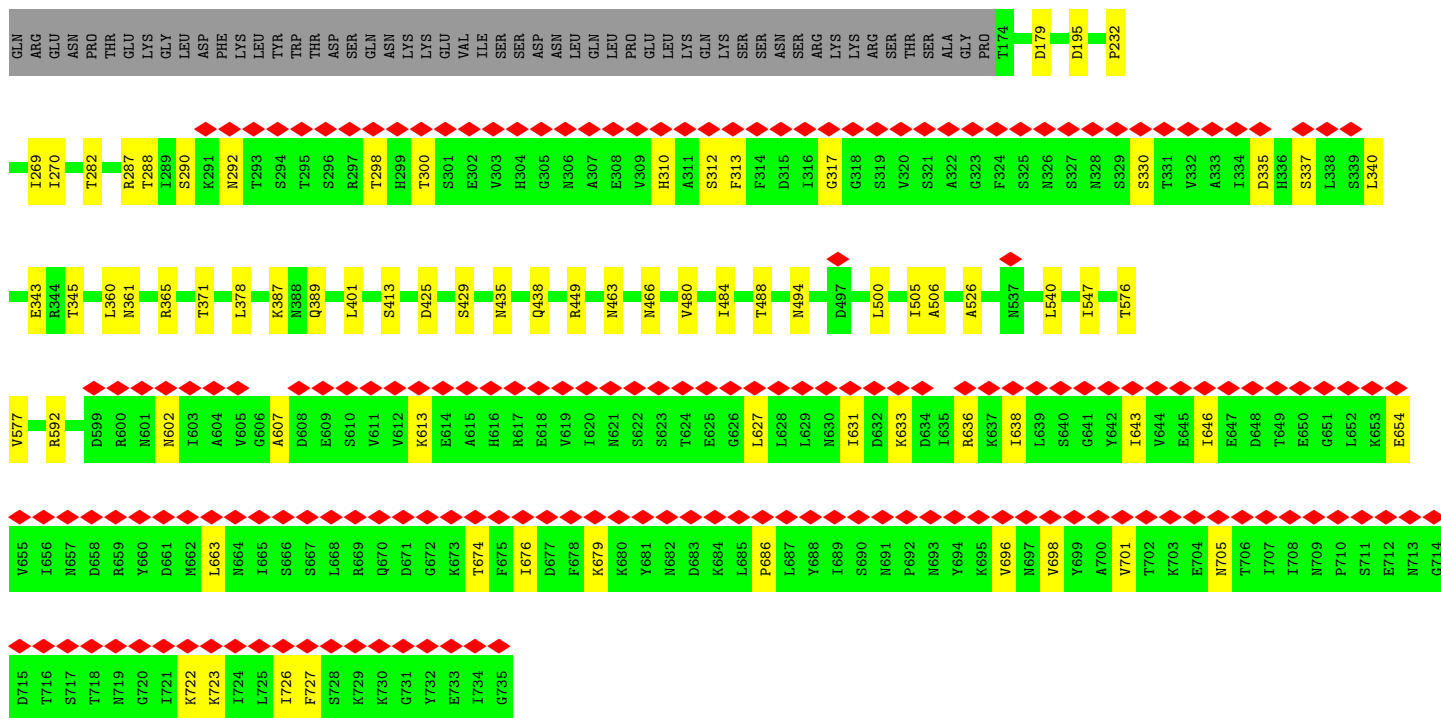


GLU VAL LYS GLN ASP ARG LEU LEU LYS ASN VAL ASP LYS SER SER SER GLN GLY THR ASP PHE LEU LEU LEU TYR TYR PHE MET ASP TRP GLN ALA PRO MET VAL VAL THR THR SER SER THR GLY ASP LEU LEU ILE PRO SER SER ARG LEU LEU GLU LEU ASN ARG ILE LEU TYR PRO GLN SER ILE GLU ASN LYS ILE GLN ASN LYS TYR PHE

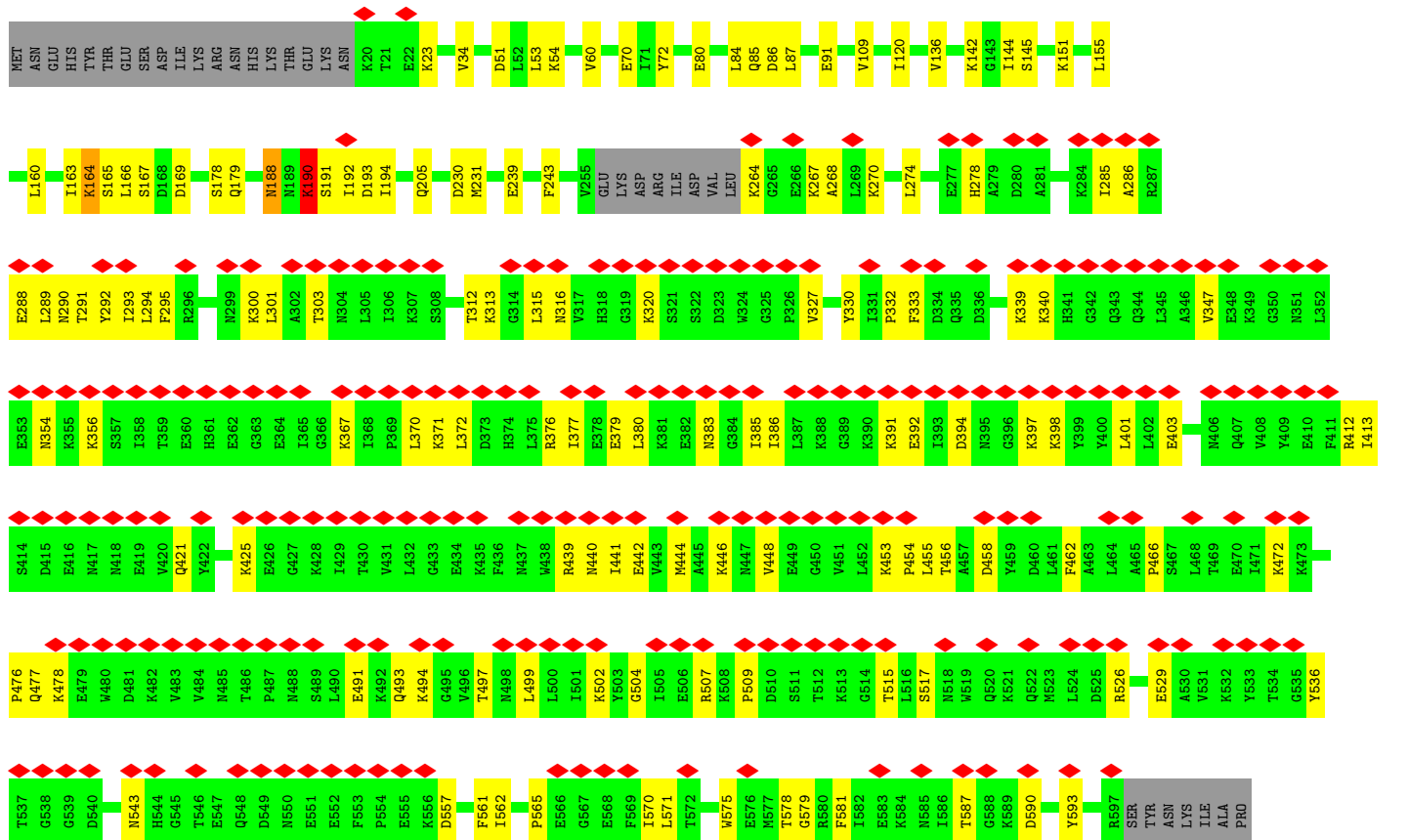
GLN SER ALA ILE TRP SER ASN ARG LEU LEU PHE ILE LYS VAL ASP VAL LYS LYS SER SER ASP ASP TYR THR THR ASP PHE LEU LEU ALA THR THR SER ALA LEU TYR TYR ALA ASP PHE ASP HIS VAL VAL ASP ASP MET THR THR ASP MET TRP TRP ASP VAL VAL ASP ASP MET VAL VAL THR THR SER SER THR LYS LYS ALA ALA PRO MET VAL VAL THR THR SER SER THR GLY ASP LEU LEU ILE PRO SER SER ARG LEU LEU GLU LEU ASN ARG ILE LEU TYR PRO GLN SER ILE GLU ASN LYS ILE GLN ASN LYS TYR PHE

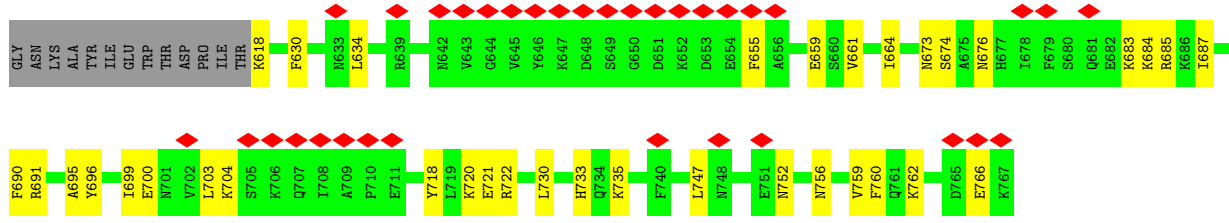
GLN ARG GLU ASN PRO THR THR LYS GLY LEU ASP PHE LYS LYS SER SER ASP ASP TYR THR THR ASP PHE LEU LEU ALA THR THR SER ALA LEU TYR TYR ALA ASP PHE ASP HIS VAL VAL ASP ASP MET THR THR ASP MET TRP TRP ASP VAL VAL ASP ASP MET VAL VAL THR THR SER SER THR LYS LYS ALA ALA PRO MET VAL VAL THR THR SER SER THR GLY ASP LEU LEU ILE PRO SER SER ARG LEU LEU GLU LEU ASN ARG ILE LEU TYR PRO GLN SER ILE GLU ASN LYS ILE GLN ASN LYS TYR PHE



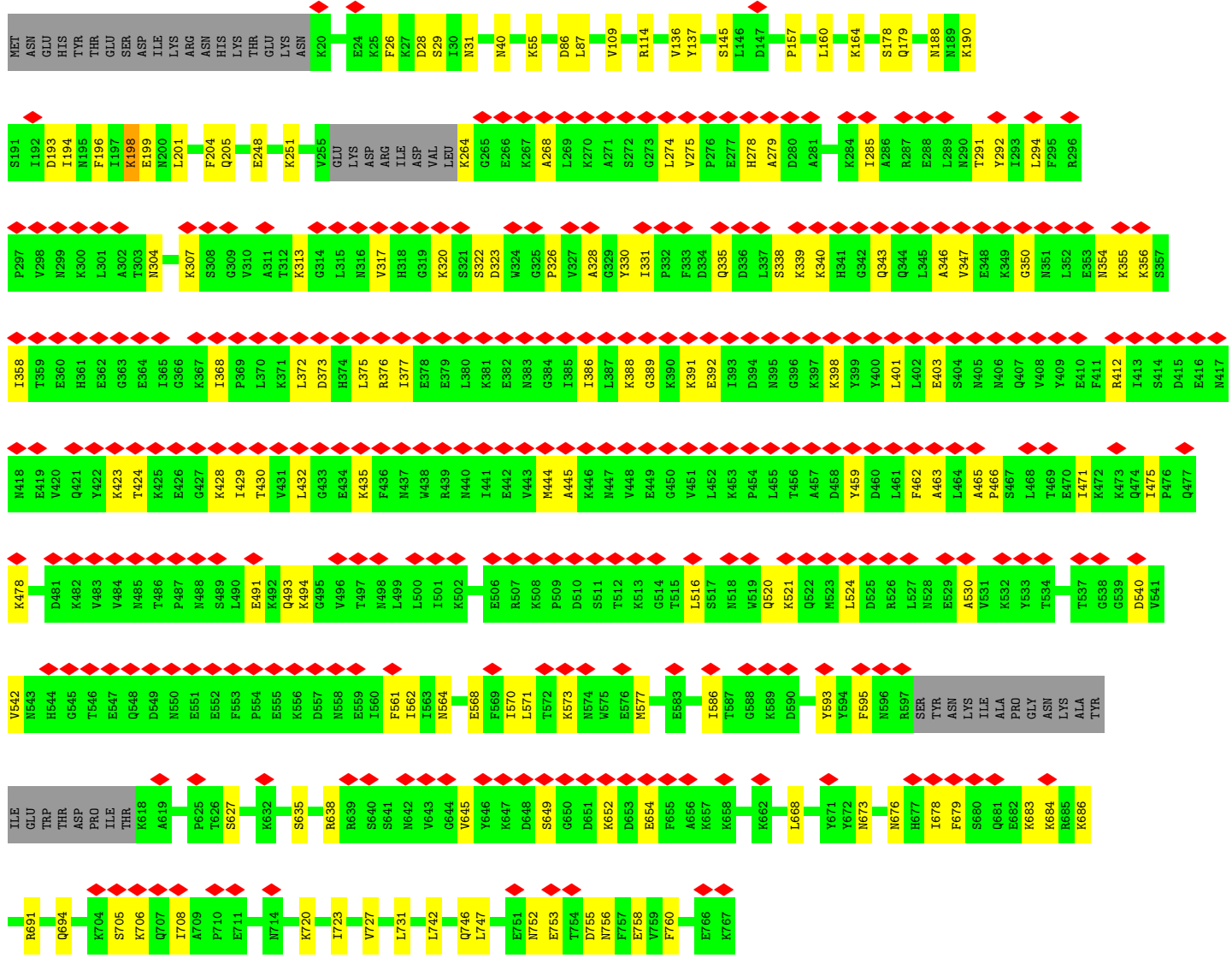
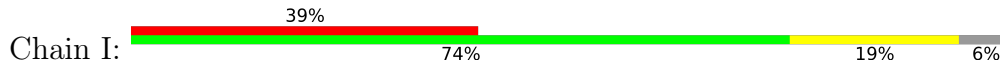


● Molecule 2: Calmodulin-sensitive adenylate cyclase





• Molecule 2: Calmodulin-sensitive adenylate cyclase



4 Experimental information

Property	Value	Source
EM reconstruction method	SINGLE PARTICLE	Depositor
Imposed symmetry	POINT, C1	Depositor
Number of particles used	72864	Depositor
Resolution determination method	FSC 0.143 CUT-OFF	Depositor
CTF correction method	PHASE FLIPPING AND AMPLITUDE CORRECTION	Depositor
Microscope	FEI TITAN KRIOS	Depositor
Voltage (kV)	300	Depositor
Electron dose ($e^-/\text{\AA}^2$)	62.9	Depositor
Minimum defocus (nm)	Not provided	
Maximum defocus (nm)	Not provided	
Magnification	Not provided	
Image detector	GATAN K2 SUMMIT (4k x 4k)	Depositor
Maximum map value	0.201	Depositor
Minimum map value	-0.082	Depositor
Average map value	0.000	Depositor
Map value standard deviation	0.007	Depositor
Recommended contour level	0.03	Depositor
Map size (Å)	321.00003, 321.00003, 321.00003	wwPDB
Map dimensions	300, 300, 300	wwPDB
Map angles (°)	90.0, 90.0, 90.0	wwPDB
Pixel spacing (Å)	1.07, 1.07, 1.07	Depositor

5 Model quality [i](#)

5.1 Standard geometry [i](#)

Bond lengths and bond angles in the following residue types are not validated in this section: CA

The Z score for a bond length (or angle) is the number of standard deviations the observed value is removed from the expected value. A bond length (or angle) with $|Z| > 5$ is considered an outlier worth inspection. RMSZ is the root-mean-square of all Z scores of the bond lengths (or angles).

Mol	Chain	Bond lengths		Bond angles	
		RMSZ	# Z >5	RMSZ	# Z >5
1	A	0.36	0/4515	0.53	0/6125
1	B	0.38	0/4515	0.53	0/6125
1	C	0.38	0/4515	0.55	0/6125
1	D	0.36	0/4515	0.54	0/6125
1	E	0.35	0/4515	0.54	0/6125
1	F	0.35	0/4515	0.53	0/6125
1	G	0.35	0/4515	0.52	0/6125
2	H	0.29	0/5976	0.52	1/8024 (0.0%)
2	I	0.29	0/5976	0.52	1/8024 (0.0%)
All	All	0.35	0/43557	0.53	2/58923 (0.0%)

There are no bond length outliers.

All (2) bond angle outliers are listed below:

Mol	Chain	Res	Type	Atoms	Z	Observed($^{\circ}$)	Ideal($^{\circ}$)
2	H	193	ASP	CB-CG-OD2	5.20	122.97	118.30
2	I	193	ASP	CB-CG-OD2	5.17	122.96	118.30

There are no chirality outliers.

There are no planarity outliers.

5.2 Too-close contacts [i](#)

In the following table, the Non-H and H(model) columns list the number of non-hydrogen atoms and hydrogen atoms in the chain respectively. The H(added) column lists the number of hydrogen atoms added and optimized by MolProbity. The Clashes column lists the number of clashes within the asymmetric unit, whereas Symm-Clashes lists symmetry-related clashes.

Mol	Chain	Non-H	H(model)	H(added)	Clashes	Symm-Clashes
1	A	4438	0	4378	46	0
1	B	4438	0	4378	51	0
1	C	4438	0	4378	49	0
1	D	4438	0	4378	43	0
1	E	4438	0	4378	46	0
1	F	4438	0	4377	50	0
1	G	4438	0	4378	45	0
2	H	5871	0	5890	115	0
2	I	5871	0	5890	101	0
3	A	2	0	0	0	0
3	B	2	0	0	0	0
3	C	2	0	0	0	0
3	D	2	0	0	0	0
3	E	2	0	0	0	0
3	F	2	0	0	0	0
3	G	2	0	0	0	0
All	All	42822	0	42425	522	0

The all-atom clashscore is defined as the number of clashes found per 1000 atoms (including hydrogen atoms). The all-atom clashscore for this structure is 6.

All (522) close contacts within the same asymmetric unit are listed below, sorted by their clash magnitude.

Atom-1	Atom-2	Interatomic distance (Å)	Clash overlap (Å)
2:I:164:LYS:CE	2:I:190:LYS:HZ2	1.62	1.11
2:I:164:LYS:HE2	2:I:190:LYS:HZ2	1.17	1.06
2:I:164:LYS:CE	2:I:190:LYS:NZ	2.33	0.91
2:I:164:LYS:HD3	2:I:190:LYS:NZ	1.97	0.80
2:I:164:LYS:CD	2:I:190:LYS:NZ	2.52	0.71
1:C:543:GLN:HA	1:C:543:GLN:HE21	1.55	0.71
2:I:164:LYS:NZ	2:I:190:LYS:NZ	2.43	0.67
1:F:659:ARG:HB3	1:F:662:MET:HB2	1.78	0.66
1:A:627:LEU:HB3	1:A:676:ILE:HB	1.77	0.66
1:D:310:HIS:HB2	1:D:317:GLY:H	1.61	0.66
1:G:698:VAL:H	1:G:727:PHE:HB3	1.59	0.66
2:I:164:LYS:HD3	2:I:190:LYS:HZ1	1.60	0.66
2:I:164:LYS:HE2	2:I:190:LYS:NZ	2.03	0.65
1:E:648:ASP:HB2	1:E:651:GLY:H	1.61	0.64
1:F:232:PRO:HD3	1:F:480:VAL:HG11	1.81	0.62
1:E:232:PRO:HD3	1:E:480:VAL:HG11	1.81	0.62
2:I:194:ILE:O	2:I:198:LYS:HB2	2.00	0.62
1:G:269:ILE:HD11	1:G:360:LEU:HD22	1.81	0.61

Continued on next page...

Continued from previous page...

Atom-1	Atom-2	Interatomic distance (Å)	Clash overlap (Å)
2:I:294:LEU:HB3	2:I:462:PHE:HB3	1.81	0.61
1:D:627:LEU:HB3	1:D:676:ILE:HB	1.82	0.61
1:B:292:ASN:HB3	1:B:335:ASP:HB3	1.81	0.61
1:G:270:ILE:HB	1:G:361:ASN:HB3	1.83	0.61
1:A:312:SER:HB2	1:A:315:ASP:HB3	1.84	0.60
1:C:307:ALA:HA	1:C:320:VAL:HA	1.83	0.60
1:F:282:THR:HB	1:F:345:THR:HB	1.84	0.60
1:C:292:ASN:HB3	1:C:335:ASP:HB2	1.83	0.59
1:A:292:ASN:HB3	1:A:335:ASP:HB3	1.82	0.59
1:G:282:THR:HB	1:G:345:THR:HB	1.85	0.59
2:H:291:THR:HA	2:H:466:PRO:HA	1.84	0.59
1:B:232:PRO:HD3	1:B:480:VAL:HG11	1.84	0.59
2:H:685:ARG:HB3	2:H:730:LEU:HD21	1.85	0.59
2:H:367:LYS:HD2	2:H:442:GLU:HB2	1.86	0.58
1:D:278:SER:HB3	1:D:349:THR:HB	1.86	0.58
1:E:406:ALA:HB3	1:E:409:ASN:HD22	1.67	0.58
1:C:541:GLN:HG2	1:C:546:ASP:HA	1.85	0.58
2:H:84:LEU:HD11	2:H:120:ILE:HD13	1.85	0.58
2:H:472:LYS:NZ	2:H:477:GLN:OE1	2.36	0.58
2:H:109:VAL:HG21	2:H:136:VAL:HG22	1.86	0.57
2:H:294:LEU:HB3	2:H:462:PHE:HB3	1.85	0.57
2:I:164:LYS:NZ	2:I:190:LYS:HZ2	1.98	0.57
1:B:326:ASN:HD22	1:C:303:VAL:HG23	1.69	0.57
2:H:51:ASP:HA	2:H:54:LYS:HG2	1.84	0.57
1:D:646:ILE:HB	1:D:654:GLU:HB3	1.86	0.57
2:I:145:SER:OG	2:I:205:GLN:NE2	2.37	0.57
1:B:643:ILE:HB	1:B:699:TYR:HB2	1.87	0.57
1:F:463:ASN:ND2	1:F:466:ASN:OD1	2.37	0.57
2:I:55:LYS:NZ	2:I:137:TYR:OH	2.37	0.56
1:F:524:LYS:HD2	1:F:579:ASP:HB3	1.87	0.56
2:I:444:MET:SD	2:I:444:MET:N	2.78	0.56
1:C:269:ILE:HD11	1:C:360:LEU:HD22	1.86	0.56
2:H:294:LEU:HD13	2:H:562:ILE:HB	1.86	0.56
2:H:397:LYS:NZ	2:H:398:LYS:O	2.39	0.56
1:A:337:SER:OG	1:B:292:ASN:ND2	2.37	0.56
1:D:276:ASP:OD1	1:D:276:ASP:N	2.37	0.56
1:C:627:LEU:HB3	1:C:676:ILE:HB	1.88	0.56
1:D:645:GLU:HG2	1:D:697:ASN:HD22	1.69	0.56
1:A:731:GLY:HA2	1:A:734:ILE:HD12	1.88	0.56
1:E:665:ILE:HG13	1:E:680:LYS:HB2	1.88	0.56
1:A:299:HIS:ND1	1:G:330:SER:O	2.39	0.56

Continued on next page...

Continued from previous page...

Atom-1	Atom-2	Interatomic distance (Å)	Clash overlap (Å)
1:D:269:ILE:HD11	1:D:360:LEU:HD22	1.88	0.56
2:H:676:ASN:HB2	2:H:684:LYS:HD2	1.88	0.56
2:I:343:GLN:HB3	2:I:347:VAL:HG13	1.86	0.56
2:H:718:TYR:OH	2:H:722:ARG:NH2	2.38	0.56
1:B:515:GLU:HG3	1:B:518:LYS:HE2	1.87	0.55
1:G:646:ILE:HB	1:G:654:GLU:HB2	1.88	0.55
2:H:330:TYR:HA	2:H:456:THR:HA	1.88	0.55
1:F:592:ARG:NH1	1:F:602:ASN:OD1	2.40	0.55
2:H:292:TYR:HB3	2:H:562:ILE:HD11	1.87	0.55
1:A:463:ASN:ND2	1:A:466:ASN:OD1	2.38	0.55
1:G:592:ARG:NH1	1:G:602:ASN:OD1	2.39	0.55
2:H:274:LEU:O	2:H:300:LYS:NZ	2.40	0.55
2:H:380:LEU:HA	2:H:383:ASN:HB2	1.89	0.55
1:D:524:LYS:HG3	1:D:540:LEU:HD22	1.89	0.55
1:F:331:THR:HG22	1:G:298:THR:HG23	1.89	0.55
1:D:625:GLU:HB2	1:D:679:LYS:HE2	1.88	0.55
2:I:516:LEU:HB2	2:I:521:LYS:HG3	1.89	0.55
1:E:698:VAL:H	1:E:727:PHE:HB3	1.72	0.55
2:I:40:ASN:ND2	2:I:746:GLN:OE1	2.41	0.55
2:I:350:GLY:O	2:I:354:ASN:ND2	2.40	0.55
1:D:624:THR:HG21	1:D:689:ILE:HD11	1.88	0.54
1:E:523:LEU:HD13	1:E:583:LEU:HD21	1.89	0.54
2:H:562:ILE:HG23	2:H:570:ILE:HB	1.90	0.54
1:C:232:PRO:HD3	1:C:480:VAL:HG11	1.89	0.54
1:F:494:ASN:HB3	1:F:500:LEU:HD23	1.89	0.54
1:C:595:ARG:NH2	1:C:634:ASP:OD2	2.41	0.54
1:F:711:SER:HB3	1:F:715:ASP:HB2	1.89	0.54
2:H:87:LEU:HD12	2:H:91:GLU:HB3	1.89	0.54
1:C:664:ASN:O	1:C:680:LYS:NZ	2.41	0.54
2:H:379:GLU:O	2:H:383:ASN:ND2	2.41	0.54
2:H:499:LEU:HA	2:H:502:LYS:HE2	1.90	0.54
1:A:476:ASN:OD1	1:A:476:ASN:N	2.39	0.53
2:I:676:ASN:HB2	2:I:684:LYS:HE3	1.90	0.53
1:E:224:GLU:OE1	1:F:242:ARG:NH2	2.40	0.53
2:H:439:ARG:NH1	2:H:440:ASN:O	2.41	0.53
1:E:323:GLY:HA2	1:F:306:ASN:HA	1.91	0.53
1:E:328:ASN:OD1	1:F:301:SER:OG	2.27	0.53
1:F:560:GLN:O	1:F:564:ASN:ND2	2.42	0.53
1:B:523:LEU:HD13	1:B:583:LEU:HD21	1.91	0.53
1:E:282:THR:HB	1:E:345:THR:HB	1.91	0.53
1:F:179:ASP:OD1	1:F:179:ASP:N	2.38	0.53

Continued on next page...

Continued from previous page...

Atom-1	Atom-2	Interatomic distance (Å)	Clash overlap (Å)
1:F:498:LEU:HD13	1:F:604:ALA:HB3	1.91	0.53
1:E:729:LYS:HD2	1:E:733:GLU:HB2	1.91	0.52
1:A:269:ILE:HD11	1:A:360:LEU:HD22	1.91	0.52
1:A:642:TYR:HB2	1:A:665:ILE:HG12	1.89	0.52
2:H:756:ASN:HA	2:H:759:VAL:HG22	1.91	0.52
1:D:282:THR:HB	1:D:345:THR:HB	1.91	0.52
1:F:620:ILE:HB	1:F:628:LEU:HD23	1.90	0.52
1:G:179:ASP:OD1	1:G:179:ASP:N	2.34	0.52
2:I:248:GLU:OE1	2:I:251:LYS:NZ	2.40	0.52
2:I:275:VAL:HB	2:I:278:HIS:HB2	1.91	0.52
1:E:463:ASN:ND2	1:E:466:ASN:OD1	2.42	0.52
1:F:623:SER:OG	1:F:624:THR:N	2.43	0.52
2:H:507:ARG:NH1	2:H:515:THR:O	2.42	0.52
2:H:587:THR:O	2:H:684:LYS:NZ	2.34	0.52
1:C:305:GLY:HA2	1:C:322:ALA:HA	1.92	0.52
2:H:313:LYS:HB3	2:H:455:LEU:HB3	1.92	0.52
2:I:201:LEU:HA	2:I:204:PHE:HB2	1.92	0.52
1:B:329:SER:HA	1:C:300:THR:HA	1.92	0.52
1:C:592:ARG:NH1	1:C:602:ASN:OD1	2.40	0.52
1:F:329:SER:HA	1:G:300:THR:HA	1.92	0.52
1:F:640:SER:HB3	1:F:701:VAL:HG13	1.91	0.52
2:H:340:LYS:HB3	2:H:347:VAL:HG12	1.92	0.52
1:B:203:LEU:HD23	2:H:34:VAL:HG22	1.92	0.52
1:D:627:LEU:HD21	1:D:629:LEU:HD12	1.91	0.52
1:C:567:ALA:O	1:C:570:ASN:ND2	2.43	0.52
2:H:86:ASP:N	2:H:86:ASP:OD1	2.42	0.52
2:H:286:ALA:HB1	2:H:565:PRO:HA	1.91	0.52
1:G:312:SER:OG	1:G:313:PHE:N	2.43	0.51
2:H:683:LYS:HE2	2:H:687:ILE:HD11	1.92	0.51
1:A:695:LYS:NZ	1:A:697:ASN:OD1	2.43	0.51
2:H:268:ALA:HB2	2:H:571:LEU:HB2	1.93	0.51
2:I:194:ILE:O	2:I:194:ILE:HG22	2.10	0.51
1:D:327:SER:HA	1:E:302:GLU:HA	1.92	0.51
2:H:720:LYS:NZ	2:H:721:GLU:OE2	2.43	0.51
2:I:335:GLN:HB3	2:I:340:LYS:HB2	1.93	0.51
1:A:551:ASP:OD1	1:A:551:ASP:N	2.44	0.51
1:A:715:ASP:OD2	1:A:719:ASN:ND2	2.43	0.51
1:E:551:ASP:N	1:E:551:ASP:OD1	2.41	0.51
1:F:292:ASN:HB3	1:F:335:ASP:HB3	1.92	0.51
1:F:300:THR:HB	1:F:327:SER:HB2	1.91	0.51
1:G:505:ILE:HD13	1:G:526:ALA:HB1	1.92	0.51

Continued on next page...

Continued from previous page...

Atom-1	Atom-2	Interatomic distance (Å)	Clash overlap (Å)
1:D:613:LYS:O	1:D:617:ARG:NH1	2.44	0.51
2:H:188:ASN:CB	2:H:191:SER:OG	2.59	0.50
2:H:733:HIS:O	2:H:735:LYS:NZ	2.44	0.50
1:C:661:ASP:N	1:C:661:ASP:OD1	2.43	0.50
2:H:446:LYS:HG2	2:H:448:VAL:HG13	1.93	0.50
1:B:336:HIS:O	1:C:292:ASN:ND2	2.44	0.50
1:G:290:SER:HB3	1:G:337:SER:HB2	1.93	0.50
1:C:394:ILE:HG21	1:C:421:LEU:HD11	1.94	0.50
1:G:387:LYS:O	1:G:449:ARG:NH1	2.41	0.50
1:F:645:GLU:OE1	1:F:697:ASN:ND2	2.44	0.50
2:I:705:SER:OG	2:I:706:LYS:N	2.44	0.50
1:C:231:ASP:OD1	1:C:231:ASP:N	2.45	0.50
1:E:302:GLU:HG2	1:E:325:SER:HB2	1.94	0.50
2:I:328:ALA:O	2:I:376:ARG:NH2	2.45	0.50
1:A:298:THR:HB	1:A:329:SER:HB3	1.94	0.50
1:C:442:LEU:HD13	1:C:448:LEU:HD23	1.92	0.50
2:I:335:GLN:HA	2:I:338:SER:HB2	1.94	0.50
2:I:673:ASN:O	2:I:676:ASN:ND2	2.45	0.50
2:I:683:LYS:HA	2:I:686:LYS:HB2	1.93	0.50
1:B:497:ASP:O	1:B:637:LYS:NZ	2.38	0.50
1:C:425:ASP:OD1	1:C:430:THR:OG1	2.26	0.50
1:G:705:ASN:HD21	1:G:722:LYS:HB3	1.77	0.50
1:E:183:ILE:HD12	1:E:203:LEU:HD11	1.94	0.49
1:F:265:ASP:N	1:F:265:ASP:OD1	2.44	0.49
1:B:280:GLN:HB3	1:B:347:ALA:HB3	1.93	0.49
1:D:365:ARG:NH1	1:D:412:PRO:O	2.45	0.49
1:F:365:ARG:NH1	1:F:412:PRO:O	2.43	0.49
1:G:613:LYS:HD3	1:G:726:ILE:HA	1.93	0.49
1:A:178:ARG:NH1	1:A:224:GLU:OE2	2.41	0.49
1:A:288:THR:HB	1:A:339:SER:HB2	1.93	0.49
1:C:290:SER:HB3	1:C:337:SER:HB3	1.93	0.49
1:A:494:ASN:HB3	1:A:500:LEU:HD23	1.93	0.49
1:B:488:THR:HG22	1:B:506:ALA:HA	1.95	0.49
2:I:343:GLN:HG3	2:I:346:ALA:H	1.78	0.49
2:I:635:SER:HA	2:I:638:ARG:HG2	1.94	0.49
1:A:640:SER:HB3	1:A:701:VAL:HB	1.94	0.49
1:B:374:ILE:HG12	1:B:377:VAL:HG22	1.94	0.49
1:E:365:ARG:NH1	1:E:412:PRO:O	2.44	0.49
2:H:166:LEU:HD11	2:H:231:MET:HB2	1.94	0.49
2:H:403:GLU:OE2	2:H:425:LYS:NZ	2.44	0.49
1:B:286:THR:HB	1:B:341:ALA:HB3	1.94	0.49

Continued on next page...

Continued from previous page...

Atom-1	Atom-2	Interatomic distance (Å)	Clash overlap (Å)
1:C:658:ASP:OD1	1:C:718:THR:OG1	2.30	0.49
1:E:494:ASN:HB3	1:E:500:LEU:HD23	1.93	0.49
2:I:340:LYS:HD2	2:I:343:GLN:HG2	1.94	0.49
1:G:633:LYS:HA	1:G:636:ARG:HG2	1.95	0.49
2:I:564:ASN:OD1	2:I:568:GLU:N	2.43	0.49
2:I:540:ASP:OD1	2:I:540:ASP:N	2.45	0.49
2:I:691:ARG:NH1	2:I:694:GLN:OE1	2.46	0.49
1:A:276:ASP:OD1	1:A:276:ASP:N	2.45	0.48
2:H:274:LEU:HA	2:H:303:THR:HG21	1.93	0.48
2:I:264:LYS:HD2	2:I:570:ILE:HA	1.95	0.48
2:I:320:LYS:HB2	2:I:339:LYS:HD2	1.95	0.48
2:I:389:GLY:H	2:I:403:GLU:H	1.61	0.48
1:F:630:ASN:HD22	1:F:673:LYS:HG2	1.78	0.48
1:A:286:THR:HG23	1:G:343:GLU:HG2	1.94	0.48
1:C:644:VAL:HG13	1:C:698:VAL:HG22	1.95	0.48
1:C:648:ASP:HB3	1:C:651:GLY:H	1.79	0.48
1:G:613:LYS:NZ	1:G:726:ILE:O	2.41	0.48
1:A:698:VAL:H	1:A:727:PHE:HB3	1.78	0.48
2:H:673:ASN:O	2:H:676:ASN:ND2	2.46	0.48
1:A:612:VAL:O	1:A:616:HIS:ND1	2.44	0.48
1:B:395:LYS:O	1:B:397:LYS:NZ	2.38	0.48
2:H:392:GLU:HB2	2:H:401:LEU:HD22	1.94	0.48
1:C:309:VAL:HA	1:C:318:GLY:HA2	1.96	0.48
1:G:701:VAL:HG22	1:G:723:LYS:HG2	1.96	0.48
2:I:368:ILE:HG12	2:I:445:ALA:HB2	1.95	0.48
2:I:373:ASP:HB3	2:I:375:LEU:HD23	1.96	0.48
2:I:752:ASN:OD1	2:I:756:ASN:ND2	2.46	0.48
1:D:316:ILE:H	1:E:313:PHE:HZ	1.62	0.48
1:D:623:SER:OG	1:D:626:GLY:O	2.32	0.48
1:E:659:ARG:NH1	1:E:716:THR:OG1	2.47	0.48
2:I:516:LEU:HD23	2:I:520:GLN:HB3	1.95	0.48
1:D:408:ASN:O	1:D:409:ASN:ND2	2.46	0.48
2:H:80:GLU:HA	2:H:85:GLN:HE22	1.79	0.48
1:F:705:ASN:HB3	1:F:722:LYS:HD3	1.96	0.48
1:G:232:PRO:HD3	1:G:480:VAL:HG11	1.96	0.48
2:H:700:GLU:O	2:H:704:LYS:N	2.42	0.48
2:I:26:PHE:O	2:I:29:SER:OG	2.31	0.48
2:I:294:LEU:HB2	2:I:463:ALA:HB3	1.96	0.48
1:A:179:ASP:OD1	1:A:179:ASP:N	2.40	0.47
2:I:304:ASN:HA	2:I:307:LYS:HE3	1.96	0.47
2:H:312:THR:OG1	2:H:543:ASN:OD1	2.32	0.47

Continued on next page...

Continued from previous page...

Atom-1	Atom-2	Interatomic distance (Å)	Clash overlap (Å)
1:B:621:ASN:HB3	1:B:628:LEU:HB2	1.95	0.47
2:H:696:TYR:HA	2:H:699:ILE:HB	1.96	0.47
2:I:196:PHE:HA	2:I:199:GLU:HG2	1.96	0.47
2:I:377:ILE:HB	2:I:388:LYS:HD2	1.95	0.47
1:B:290:SER:HB3	1:B:337:SER:HB2	1.95	0.47
1:C:300:THR:O	1:C:300:THR:OG1	2.30	0.47
2:I:268:ALA:HB2	2:I:571:LEU:HB2	1.95	0.47
1:B:179:ASP:OD1	1:B:179:ASP:N	2.35	0.47
1:E:554:PHE:HB2	1:E:559:SER:HB3	1.96	0.47
1:D:579:ASP:OD1	1:D:579:ASP:N	2.48	0.47
1:A:300:THR:HB	1:A:327:SER:HB2	1.97	0.47
1:A:378:LEU:HD21	1:A:401:LEU:HD12	1.97	0.47
1:B:276:ASP:OD1	1:B:276:ASP:N	2.47	0.47
1:C:494:ASN:HB3	1:C:500:LEU:HD23	1.97	0.47
1:E:482:PRO:HG2	1:F:404:ILE:HD13	1.96	0.47
2:H:188:ASN:HB3	2:H:191:SER:OG	2.15	0.47
2:H:372:LEU:HD11	2:H:376:ARG:HG2	1.97	0.47
2:H:491:GLU:HA	2:H:494:LYS:HG2	1.96	0.47
2:I:330:TYR:HE2	2:I:372:LEU:HB3	1.80	0.47
1:B:298:THR:HG22	1:B:329:SER:H	1.80	0.47
1:C:496:LYS:HB2	1:C:542:TYR:OH	2.15	0.47
1:G:679:LYS:HD3	1:G:686:PRO:HA	1.96	0.47
2:I:275:VAL:O	2:I:279:ALA:N	2.47	0.47
1:B:365:ARG:NH1	1:B:412:PRO:O	2.48	0.47
2:H:230:ASP:N	2:H:230:ASP:OD1	2.42	0.47
1:B:387:LYS:O	1:B:449:ARG:NH1	2.40	0.46
1:A:272:SER:OG	1:G:435:ASN:ND2	2.48	0.46
1:A:500:LEU:HD11	1:A:602:ASN:HB2	1.98	0.46
1:A:666:SER:HG	1:A:674:THR:HG1	1.59	0.46
1:B:476:ASN:OD1	1:B:476:ASN:N	2.49	0.46
1:C:729:LYS:HE3	1:C:733:GLU:HB3	1.96	0.46
2:I:109:VAL:HG11	2:I:136:VAL:HG22	1.96	0.46
2:I:391:LYS:HE2	2:I:398:LYS:HG3	1.96	0.46
1:B:378:LEU:HD21	1:B:401:LEU:HD12	1.96	0.46
1:E:315:ASP:HA	1:F:313:PHE:HE2	1.81	0.46
1:G:607:ALA:HB2	1:G:638:ILE:HD11	1.96	0.46
2:H:695:ALA:O	2:H:699:ILE:N	2.42	0.46
2:I:28:ASP:HA	2:I:31:ASN:HB2	1.96	0.46
2:I:355:LYS:HA	2:I:358:ILE:HD12	1.96	0.46
1:G:292:ASN:HB3	1:G:335:ASP:HB2	1.97	0.46
2:H:192:ILE:HG12	2:H:192:ILE:O	2.15	0.46

Continued on next page...

Continued from previous page...

Atom-1	Atom-2	Interatomic distance (Å)	Clash overlap (Å)
2:H:458:ASP:OD1	2:H:458:ASP:N	2.49	0.46
2:I:691:ARG:NH1	2:I:753:GLU:OE1	2.42	0.46
1:C:667:SER:O	1:C:675:PHE:N	2.47	0.46
1:D:488:THR:HG22	1:D:506:ALA:HA	1.97	0.46
1:D:496:LYS:HD2	1:D:496:LYS:HA	1.76	0.46
2:H:630:PHE:O	2:H:634:LEU:N	2.48	0.46
2:H:762:LYS:NZ	2:H:766:GLU:OE1	2.38	0.46
1:B:669:ARG:NH1	1:B:671:ASP:OD2	2.49	0.46
1:C:297:ARG:HA	1:C:330:SER:HA	1.98	0.46
1:A:290:SER:HB3	1:A:337:SER:HB2	1.98	0.46
1:G:643:ILE:HG21	1:G:723:LYS:HE2	1.97	0.46
2:H:145:SER:OG	2:H:205:GLN:NE2	2.41	0.46
1:C:310:HIS:N	1:C:317:GLY:O	2.44	0.46
1:C:692:PRO:HB2	1:C:732:TYR:HD2	1.81	0.46
2:I:322:SER:HB3	2:I:338:SER:HA	1.98	0.46
1:D:674:THR:OG1	1:D:675:PHE:N	2.48	0.46
2:H:155:LEU:HD23	2:H:160:LEU:HD22	1.98	0.46
2:I:323:ASP:OD1	2:I:323:ASP:N	2.46	0.45
2:I:491:GLU:HA	2:I:494:LYS:HB2	1.98	0.45
1:B:528:LYS:HB2	1:B:528:LYS:HE3	1.76	0.45
1:D:179:ASP:OD1	1:D:179:ASP:N	2.43	0.45
2:H:391:LYS:HA	2:H:401:LEU:HB3	1.98	0.45
1:D:642:TYR:HA	1:D:700:ALA:HA	1.98	0.45
2:H:557:ASP:OD1	2:H:557:ASP:N	2.50	0.45
2:I:86:ASP:O	2:I:114:ARG:NH2	2.48	0.45
2:I:516:LEU:HD13	2:I:524:LEU:HD22	1.98	0.45
1:E:290:SER:HB3	1:E:337:SER:HB3	1.98	0.45
1:E:632:ASP:HB3	1:E:635:ILE:HG12	1.98	0.45
2:H:412:ARG:O	2:H:421:GLN:N	2.49	0.45
1:B:667:SER:OG	1:B:675:PHE:O	2.33	0.45
1:C:378:LEU:HD21	1:C:401:LEU:HD12	1.98	0.45
1:D:664:ASN:OD1	1:D:681:TYR:OH	2.34	0.45
1:E:329:SER:HA	1:F:300:THR:HA	1.97	0.45
1:E:717:SER:OG	1:E:718:THR:N	2.47	0.45
2:H:267:LYS:HA	2:H:270:LYS:HE3	1.98	0.45
2:H:661:VAL:HG23	2:H:664:ILE:HD12	1.99	0.45
2:I:747:LEU:HD21	2:I:760:PHE:HB2	1.98	0.45
2:I:755:ASP:HA	2:I:758:GLU:HB3	1.99	0.45
1:B:224:GLU:HG3	1:B:517:THR:HG21	1.98	0.45
1:D:636:ARG:HH22	1:D:668:LEU:HB2	1.80	0.45
1:D:700:ALA:H	1:D:726:ILE:HD13	1.81	0.45

Continued on next page...

Continued from previous page...

Atom-1	Atom-2	Interatomic distance (Å)	Clash overlap (Å)
1:E:312:SER:OG	1:E:313:PHE:N	2.49	0.45
1:F:488:THR:HG22	1:F:506:ALA:HA	1.99	0.45
2:I:274:LEU:HD22	2:I:561:PHE:HE2	1.82	0.45
1:G:378:LEU:HD21	1:G:401:LEU:HD12	1.99	0.45
2:H:444:MET:SD	2:H:444:MET:N	2.88	0.45
1:E:268:ASN:HB2	1:E:363:ASN:HB2	1.99	0.45
1:E:332:VAL:O	1:F:296:SER:OG	2.27	0.45
1:C:647:GLU:HB3	1:C:695:LYS:HB2	2.00	0.44
1:F:341:ALA:HB2	1:G:288:THR:HG23	1.98	0.44
2:H:476:PRO:HB2	2:H:478:LYS:HG2	1.98	0.44
2:I:87:LEU:HA	2:I:114:ARG:HH12	1.81	0.44
2:I:285:ILE:HD11	2:I:530:ALA:HB3	1.99	0.44
1:B:620:ILE:HG13	1:B:673:LYS:HD3	2.00	0.44
1:C:627:LEU:HD22	1:C:676:ILE:HD13	2.00	0.44
1:G:463:ASN:ND2	1:G:466:ASN:OD1	2.50	0.44
2:H:493:GLN:O	2:H:497:THR:OG1	2.30	0.44
2:H:504:GLY:O	2:H:517:SER:OG	2.30	0.44
2:I:178:SER:OG	2:I:179:GLN:N	2.49	0.44
1:D:425:ASP:OD2	1:D:429:SER:OG	2.35	0.44
2:H:655:PHE:O	2:H:659:GLU:N	2.50	0.44
1:F:496:LYS:HA	1:F:496:LYS:HD3	1.77	0.44
1:G:425:ASP:OD2	1:G:429:SER:OG	2.35	0.44
2:H:151:LYS:HA	2:H:151:LYS:HD3	1.73	0.44
2:H:590:ASP:N	2:H:590:ASP:OD1	2.48	0.44
2:I:335:GLN:HB2	2:I:347:VAL:HA	1.99	0.44
1:A:231:ASP:OD1	1:A:231:ASP:N	2.45	0.44
2:I:313:LYS:HE3	2:I:317:VAL:HG13	2.00	0.44
1:A:639:LEU:O	1:A:703:LYS:NZ	2.40	0.44
1:E:505:ILE:HD13	1:E:526:ALA:HB1	1.99	0.44
1:F:225:LYS:HE2	1:F:518:LYS:HD3	2.00	0.44
2:H:190:LYS:HD2	2:H:190:LYS:HA	1.63	0.44
2:H:333:PHE:H	2:H:441:ILE:HG23	1.82	0.44
2:H:687:ILE:HA	2:H:690:PHE:HB3	1.98	0.44
2:I:356:LYS:HA	2:I:356:LYS:HD3	1.85	0.44
1:G:540:LEU:HD23	1:G:547:ILE:HG12	2.00	0.44
2:H:60:VAL:HG13	2:H:144:ILE:HD13	1.99	0.44
2:H:332:PRO:O	2:H:354:ASN:ND2	2.50	0.44
2:I:392:GLU:H	2:I:401:LEU:HB3	1.83	0.44
2:I:649:SER:OG	2:I:654:GLU:OE1	2.32	0.44
2:I:720:LYS:HA	2:I:723:ILE:HG22	1.99	0.44
1:B:657:ASN:N	1:B:657:ASN:OD1	2.50	0.44

Continued on next page...

Continued from previous page...

Atom-1	Atom-2	Interatomic distance (Å)	Clash overlap (Å)
1:B:658:ASP:OD1	1:B:718:THR:OG1	2.31	0.44
1:C:494:ASN:HD21	1:C:592:ARG:HG2	1.81	0.44
1:D:232:PRO:HG3	1:D:459:ILE:HD13	1.99	0.44
2:H:264:LYS:HA	2:H:570:ILE:HA	2.00	0.44
2:H:356:LYS:HD2	2:H:356:LYS:HA	1.72	0.44
2:H:394:ASP:OD1	2:H:394:ASP:N	2.50	0.44
2:H:53:LEU:HD12	2:H:53:LEU:HA	1.87	0.44
2:H:448:VAL:HG21	2:H:453:LYS:HD2	1.99	0.44
2:I:326:PRO:HG3	2:I:386:ILE:HD13	2.00	0.44
2:I:430:THR:HG22	2:I:432:LEU:H	1.82	0.44
1:E:692:PRO:HB2	1:E:732:TYR:HB3	1.99	0.43
1:F:629:LEU:N	1:F:674:THR:O	2.46	0.43
1:G:287:ARG:HG2	1:G:340:LEU:HD22	2.00	0.43
2:I:627:SER:HB3	2:I:668:LEU:HB3	2.00	0.43
1:B:624:THR:HB	1:B:687:LEU:H	1.84	0.43
1:D:609:GLU:O	1:D:613:LYS:NZ	2.39	0.43
2:H:23:LYS:HB2	2:H:23:LYS:HE3	1.87	0.43
2:H:70:GLU:OE1	2:H:72:TYR:OH	2.34	0.43
2:H:367:LYS:HD3	2:H:367:LYS:HA	1.70	0.43
1:A:508:VAL:HG13	1:A:516:THR:HA	2.01	0.43
1:C:636:ARG:HH22	1:C:668:LEU:HD13	1.82	0.43
1:D:476:ASN:OD1	1:D:476:ASN:N	2.51	0.43
1:D:665:ILE:HD12	1:D:681:TYR:HD2	1.84	0.43
1:E:422:ASN:OD1	1:E:422:ASN:N	2.51	0.43
1:F:360:LEU:HD23	1:F:360:LEU:HA	1.89	0.43
2:H:333:PHE:O	2:H:354:ASN:ND2	2.46	0.43
2:H:371:LYS:H	2:H:454:PRO:HG2	1.84	0.43
1:E:276:ASP:OD1	1:E:276:ASP:N	2.35	0.43
1:E:423:ALA:HB1	1:E:428:SER:HA	2.00	0.43
1:G:631:ILE:HD13	1:G:674:THR:HB	1.99	0.43
1:G:643:ILE:HD11	1:G:663:LEU:HD13	1.99	0.43
2:I:493:GLN:HG3	2:I:678:ILE:HD11	2.00	0.43
1:B:282:THR:HB	1:B:345:THR:HB	2.00	0.43
1:C:276:ASP:OD1	1:C:276:ASP:N	2.48	0.43
1:F:276:ASP:OD1	1:F:276:ASP:N	2.52	0.43
1:F:502:GLU:O	1:F:503:ARG:NH1	2.52	0.43
1:G:484:ILE:O	1:G:488:THR:OG1	2.27	0.43
2:H:164:LYS:HD2	2:H:164:LYS:HA	1.76	0.43
2:H:178:SER:OG	2:H:179:GLN:N	2.52	0.43
2:H:320:LYS:HA	2:H:320:LYS:HD3	1.85	0.43
2:H:575:TRP:O	2:H:579:GLY:N	2.39	0.43

Continued on next page...

Continued from previous page...

Atom-1	Atom-2	Interatomic distance (Å)	Clash overlap (Å)
1:D:595:ARG:HD2	1:D:611:VAL:HG21	2.00	0.43
2:I:291:THR:HA	2:I:466:PRO:HA	2.00	0.43
1:A:405:LEU:HD12	1:A:405:LEU:HA	1.91	0.43
1:D:306:ASN:HB3	1:D:321:SER:HB2	2.01	0.43
2:H:142:LYS:O	2:H:145:SER:OG	2.33	0.43
2:H:295:PHE:N	2:H:561:PHE:O	2.52	0.43
2:H:509:PRO:HA	2:H:515:THR:HG22	2.01	0.43
2:I:157:PRO:HA	2:I:160:LEU:HB3	2.00	0.43
1:D:270:ILE:HB	1:D:361:ASN:HB3	2.01	0.43
1:D:425:ASP:HB2	1:D:430:THR:HB	2.00	0.43
1:E:265:ASP:OD1	1:E:265:ASP:N	2.46	0.43
1:E:300:THR:HB	1:E:327:SER:HB3	2.00	0.43
1:B:306:ASN:N	1:B:321:SER:OG	2.52	0.43
1:B:647:GLU:HB2	1:B:697:ASN:HD21	1.83	0.43
1:B:682:ASN:HD21	1:B:687:LEU:HA	1.84	0.43
1:D:508:VAL:HG23	1:D:516:THR:HA	2.01	0.43
1:E:179:ASP:OD1	1:E:179:ASP:N	2.52	0.43
1:F:476:ASN:OD1	1:F:476:ASN:N	2.49	0.43
2:I:593:TYR:CZ	2:I:595:PHE:HB3	2.54	0.43
1:A:454:GLN:NE2	1:B:401:LEU:O	2.44	0.42
1:A:545:LYS:HE2	1:A:545:LYS:HB3	1.92	0.42
1:A:612:VAL:HG21	1:A:724:ILE:HD12	2.00	0.42
1:B:494:ASN:HB3	1:B:500:LEU:HD23	2.00	0.42
1:B:645:GLU:HG3	1:B:697:ASN:HD22	1.84	0.42
1:G:488:THR:HG22	1:G:506:ALA:HA	2.01	0.42
2:H:676:ASN:HB3	2:H:684:LYS:HA	2.00	0.42
2:I:424:THR:HG21	2:I:430:THR:HG23	2.01	0.42
2:I:391:LYS:HA	2:I:401:LEU:HB3	2.01	0.42
2:I:727:VAL:O	2:I:731:LEU:N	2.52	0.42
1:A:365:ARG:NH1	1:A:412:PRO:O	2.49	0.42
1:F:379:PRO:HB3	1:F:455:VAL:HG22	2.01	0.42
2:H:301:LEU:O	2:H:376:ARG:NH2	2.52	0.42
2:H:752:ASN:OD1	2:H:756:ASN:ND2	2.49	0.42
1:B:606:GLY:HA3	1:B:704:GLU:HG3	2.01	0.42
1:E:278:SER:HB2	1:E:349:THR:HB	2.01	0.42
1:G:494:ASN:HB3	1:G:500:LEU:HD23	2.01	0.42
2:I:164:LYS:CD	2:I:190:LYS:HZ1	2.27	0.42
1:B:183:ILE:HD12	1:B:203:LEU:HD21	2.02	0.42
2:H:526:ARG:NE	2:H:529:GLU:OE2	2.52	0.42
1:B:285:GLN:O	1:B:287:ARG:NH1	2.51	0.42
1:E:250:GLU:OE2	1:E:503:ARG:NE	2.41	0.42

Continued on next page...

Continued from previous page...

Atom-1	Atom-2	Interatomic distance (Å)	Clash overlap (Å)
1:F:444:LYS:HE2	1:F:444:LYS:HB3	1.77	0.42
1:G:627:LEU:HB2	1:G:676:ILE:HB	2.02	0.42
1:G:696:VAL:HG23	1:G:727:PHE:HE2	1.85	0.42
2:H:618:LYS:NZ	2:H:718:TYR:O	2.52	0.42
2:I:188:ASN:ND2	2:I:190:LYS:O	2.52	0.42
1:F:605:VAL:HB	1:F:703:LYS:HB3	2.02	0.42
2:I:294:LEU:HA	2:I:562:ILE:HG22	2.01	0.42
2:I:586:ILE:HG22	2:I:593:TYR:HB2	2.01	0.42
1:A:515:GLU:OE1	1:A:518:LYS:NZ	2.37	0.42
1:A:560:GLN:O	1:A:564:ASN:ND2	2.53	0.42
1:C:648:ASP:H	1:C:652:LEU:H	1.67	0.42
2:H:163:ILE:O	2:H:167:SER:OG	2.30	0.42
2:H:194:ILE:O	2:H:194:ILE:HG22	2.20	0.42
2:I:471:ILE:HG22	2:I:475:ILE:HG12	2.01	0.42
1:C:691:ASN:OD1	1:C:693:ASN:ND2	2.52	0.41
1:C:732:TYR:HD1	1:C:733:GLU:HG3	1.85	0.41
1:E:326:ASN:O	1:F:303:VAL:N	2.53	0.41
1:F:523:LEU:HD13	1:F:583:LEU:HD21	2.02	0.41
1:G:576:THR:HG23	1:G:577:VAL:HG13	2.02	0.41
2:H:327:VAL:HG23	2:H:370:LEU:HD13	2.01	0.41
1:A:415:ASN:N	1:A:415:ASN:OD1	2.50	0.41
1:C:476:ASN:OD1	1:C:476:ASN:N	2.53	0.41
2:H:291:THR:HG23	2:H:293:ILE:HD11	2.01	0.41
2:H:313:LYS:HA	2:H:455:LEU:HD22	2.02	0.41
1:A:232:PRO:HD3	1:A:480:VAL:HG11	2.02	0.41
1:B:368:ASN:HB2	1:B:405:LEU:HG	2.01	0.41
1:B:482:PRO:HB3	1:C:246:ASN:HD21	1.85	0.41
1:C:625:GLU:HA	1:C:678:PHE:HB2	2.02	0.41
1:G:310:HIS:N	1:G:317:GLY:O	2.52	0.41
2:H:747:LEU:HD11	2:H:760:PHE:HB2	2.02	0.41
2:I:292:TYR:N	2:I:465:ALA:O	2.52	0.41
2:I:398:LYS:HD2	2:I:398:LYS:HA	1.83	0.41
2:I:412:ARG:HE	2:I:412:ARG:HB3	1.76	0.41
1:A:286:THR:HB	1:A:341:ALA:HB3	2.02	0.41
1:A:296:SER:HB2	1:A:331:THR:HB	2.03	0.41
1:B:246:ASN:HB2	1:B:373:PRO:HG3	2.03	0.41
1:B:659:ARG:HE	1:B:659:ARG:HB3	1.67	0.41
1:D:218:LYS:HE2	1:D:220:LYS:HE2	2.02	0.41
1:E:631:ILE:HG12	1:E:674:THR:HG21	2.02	0.41
2:H:290:ASN:HA	2:H:565:PRO:HB3	2.02	0.41
2:I:706:LYS:HB3	2:I:706:LYS:HE3	1.89	0.41

Continued on next page...

Continued from previous page...

Atom-1	Atom-2	Interatomic distance (Å)	Clash overlap (Å)
1:A:534:ASN:OD1	1:A:534:ASN:N	2.54	0.41
1:D:261:ILE:HD12	1:D:370:GLY:HA2	2.03	0.41
2:H:385:ILE:HG22	2:H:386:ILE:HG23	2.02	0.41
2:H:288:GLU:HG2	2:H:289:LEU:HG	2.02	0.41
1:D:323:GLY:HA3	1:E:306:ASN:HA	2.02	0.41
1:E:183:ILE:HA	1:E:184:PRO:HD3	1.91	0.41
1:G:389:GLN:NE2	1:G:438:GLN:HE21	2.19	0.41
2:H:278:HIS:CE1	2:H:536:TYR:HB2	2.55	0.41
2:H:316:ASN:OD1	2:H:316:ASN:N	2.52	0.41
2:H:691:ARG:O	2:H:695:ALA:N	2.47	0.41
1:C:554:PHE:HB2	1:C:559:SER:HB2	2.02	0.41
1:D:197:LYS:HD3	1:D:197:LYS:HA	1.90	0.41
1:D:677:ASP:N	1:D:677:ASP:OD1	2.44	0.41
1:G:365:ARG:NH1	1:G:413:SER:O	2.53	0.41
2:H:700:GLU:HA	2:H:703:LEU:HD12	2.02	0.41
2:I:428:LYS:NZ	2:I:429:ILE:O	2.48	0.41
2:I:752:ASN:O	2:I:756:ASN:ND2	2.53	0.41
1:A:670:GLN:H	1:A:670:GLN:HG2	1.70	0.41
1:B:389:GLN:HE21	1:B:438:GLN:HE21	1.68	0.41
1:B:425:ASP:OD2	1:B:429:SER:OG	2.39	0.41
1:C:412:PRO:HD3	1:C:419:ILE:HG23	2.01	0.41
1:D:308:GLU:HB2	1:D:319:SER:HB3	2.03	0.41
1:E:646:ILE:HB	1:E:654:GLU:HG2	2.03	0.41
1:G:195:ASP:N	1:G:195:ASP:OD1	2.52	0.41
2:H:239:GLU:HA	2:H:243:PHE:HD2	1.86	0.41
2:H:377:ILE:HG22	2:H:413:ILE:HD13	2.03	0.41
2:H:593:TYR:H	2:H:674:SER:HB3	1.84	0.41
2:I:313:LYS:HB3	2:I:331:ILE:HG13	2.01	0.41
2:I:645:VAL:HG23	2:I:708:ILE:HG21	2.02	0.41
2:I:742:LEU:HD23	2:I:742:LEU:HA	1.89	0.41
1:B:647:GLU:HG2	1:B:651:GLY:HA2	2.03	0.41
1:C:246:ASN:HB2	1:C:373:PRO:HG3	2.02	0.41
2:I:435:LYS:HD2	2:I:435:LYS:HA	1.89	0.41
1:A:509:ASN:HA	1:A:510:PRO:HD3	1.95	0.40
2:H:315:LEU:HD23	2:H:315:LEU:HA	1.92	0.40
2:H:320:LYS:HB2	2:H:339:LYS:HB2	2.03	0.40
2:I:459:TYR:HD2	2:I:542:VAL:HG22	1.86	0.40
1:C:365:ARG:NH1	1:C:412:PRO:O	2.54	0.40
1:F:183:ILE:HA	1:F:184:PRO:HD3	1.92	0.40
2:I:373:ASP:HB2	2:I:376:ARG:HB2	2.01	0.40
2:I:573:LYS:HE2	2:I:577:MET:HG2	2.02	0.40

Continued on next page...

Continued from previous page...

Atom-1	Atom-2	Interatomic distance (Å)	Clash overlap (Å)
1:B:642:TYR:H	1:B:663:LEU:HB3	1.85	0.40
1:E:405:LEU:HA	1:E:405:LEU:HD12	1.80	0.40
1:F:269:ILE:HG12	1:F:448:LEU:HD23	2.03	0.40
1:F:595:ARG:HE	1:F:595:ARG:HB2	1.70	0.40
2:H:285:ILE:HA	2:H:288:GLU:HB3	2.02	0.40
1:F:271:LEU:HD13	1:F:439:PHE:HE1	1.86	0.40
2:H:762:LYS:HD3	2:H:762:LYS:HA	1.85	0.40
1:F:545:LYS:HE2	1:F:545:LYS:HB3	1.93	0.40
1:F:616:HIS:HD2	1:F:726:ILE:HD12	1.87	0.40
1:G:389:GLN:HE21	1:G:438:GLN:HE21	1.70	0.40
2:H:578:THR:HA	2:H:581:PHE:HB2	2.04	0.40
2:I:493:GLN:HE22	2:I:679:PHE:HB2	1.87	0.40

There are no symmetry-related clashes.

5.3 Torsion angles [i](#)

5.3.1 Protein backbone [i](#)

In the following table, the Percentiles column shows the percent Ramachandran outliers of the chain as a percentile score with respect to all PDB entries followed by that with respect to all EM entries.

The Analysed column shows the number of residues for which the backbone conformation was analysed, and the total number of residues.

Mol	Chain	Analysed	Favoured	Allowed	Outliers	Percentiles	
1	A	560/735 (76%)	523 (93%)	37 (7%)	0	100	100
1	B	560/735 (76%)	530 (95%)	30 (5%)	0	100	100
1	C	560/735 (76%)	532 (95%)	27 (5%)	1 (0%)	47	78
1	D	560/735 (76%)	528 (94%)	32 (6%)	0	100	100
1	E	560/735 (76%)	529 (94%)	31 (6%)	0	100	100
1	F	560/735 (76%)	524 (94%)	36 (6%)	0	100	100
1	G	560/735 (76%)	531 (95%)	29 (5%)	0	100	100
2	H	714/767 (93%)	677 (95%)	36 (5%)	1 (0%)	51	82
2	I	714/767 (93%)	667 (93%)	47 (7%)	0	100	100
All	All	5348/6679 (80%)	5041 (94%)	305 (6%)	2 (0%)	100	100

All (2) Ramachandran outliers are listed below:

Mol	Chain	Res	Type
1	C	543	GLN
2	H	190	LYS

5.3.2 Protein sidechains [i](#)

In the following table, the Percentiles column shows the percent sidechain outliers of the chain as a percentile score with respect to all PDB entries followed by that with respect to all EM entries.

The Analysed column shows the number of residues for which the sidechain conformation was analysed, and the total number of residues.

Mol	Chain	Analysed	Rotameric	Outliers	Percentiles	
1	A	501/661 (76%)	498 (99%)	3 (1%)	86	94
1	B	501/661 (76%)	501 (100%)	0	100	100
1	C	501/661 (76%)	499 (100%)	2 (0%)	91	95
1	D	501/661 (76%)	501 (100%)	0	100	100
1	E	501/661 (76%)	501 (100%)	0	100	100
1	F	501/661 (76%)	497 (99%)	4 (1%)	81	91
1	G	501/661 (76%)	500 (100%)	1 (0%)	93	98
2	H	651/698 (93%)	646 (99%)	5 (1%)	81	91
2	I	651/698 (93%)	647 (99%)	4 (1%)	86	94
All	All	4809/6023 (80%)	4790 (100%)	19 (0%)	91	95

All (19) residues with a non-rotameric sidechain are listed below:

Mol	Chain	Res	Type
1	A	281	ASN
1	A	497	ASP
1	A	679	LYS
1	C	425	ASP
1	C	543	GLN
1	F	276	ASP
1	F	613	LYS
1	F	617	ARG
1	F	669	ARG
1	G	371	THR
2	H	164	LYS

Continued on next page...

Continued from previous page...

Mol	Chain	Res	Type
2	H	165	SER
2	H	169	ASP
2	H	188	ASN
2	H	190	LYS
2	I	198	LYS
2	I	423	LYS
2	I	478	LYS
2	I	652	LYS

Sometimes sidechains can be flipped to improve hydrogen bonding and reduce clashes. All (69) such sidechains are listed below:

Mol	Chain	Res	Type
1	A	363	ASN
1	A	437	ASN
1	A	564	ASN
1	A	691	ASN
1	B	292	ASN
1	B	326	ASN
1	B	363	ASN
1	B	376	ASN
1	B	389	GLN
1	B	437	ASN
1	B	458	ASN
1	B	463	ASN
1	B	601	ASN
1	B	682	ASN
1	B	697	ASN
1	C	326	ASN
1	C	363	ASN
1	C	389	GLN
1	C	463	ASN
1	C	494	ASN
1	C	543	GLN
1	C	570	ASN
1	C	601	ASN
1	C	693	ASN
1	D	326	ASN
1	D	363	ASN
1	D	389	GLN
1	D	409	ASN
1	D	458	ASN
1	D	682	ASN

Continued on next page...

Continued from previous page...

Mol	Chain	Res	Type
1	D	705	ASN
1	E	299	HIS
1	E	389	GLN
1	E	409	ASN
1	E	556	GLN
1	E	664	ASN
1	E	682	ASN
1	E	719	ASN
1	F	363	ASN
1	F	389	GLN
1	F	561	ASN
1	F	630	ASN
1	G	310	HIS
1	G	389	GLN
1	G	539	ASN
1	G	541	GLN
1	G	693	ASN
1	G	705	ASN
2	H	85	GLN
2	H	200	ASN
2	H	341	HIS
2	H	633	ASN
2	H	676	ASN
2	H	726	GLN
2	I	32	ASN
2	I	40	ASN
2	I	343	GLN
2	I	354	ASN
2	I	361	HIS
2	I	395	ASN
2	I	421	GLN
2	I	493	GLN
2	I	528	ASN
2	I	633	ASN
2	I	673	ASN
2	I	676	ASN
2	I	707	GLN
2	I	737	ASN
2	I	746	GLN

5.3.3 RNA [i](#)

There are no RNA molecules in this entry.

5.4 Non-standard residues in protein, DNA, RNA chains [i](#)

There are no non-standard protein/DNA/RNA residues in this entry.

5.5 Carbohydrates [i](#)

There are no monosaccharides in this entry.

5.6 Ligand geometry [i](#)

Of 14 ligands modelled in this entry, 14 are monoatomic - leaving 0 for Mogul analysis.

There are no bond length outliers.

There are no bond angle outliers.

There are no chirality outliers.

There are no torsion outliers.

There are no ring outliers.

No monomer is involved in short contacts.

5.7 Other polymers [i](#)

There are no such residues in this entry.

5.8 Polymer linkage issues [i](#)

There are no chain breaks in this entry.

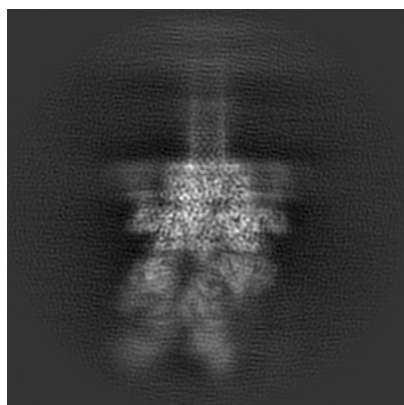
6 Map visualisation [i](#)

This section contains visualisations of the EMDB entry EMD-20957. These allow visual inspection of the internal detail of the map and identification of artifacts.

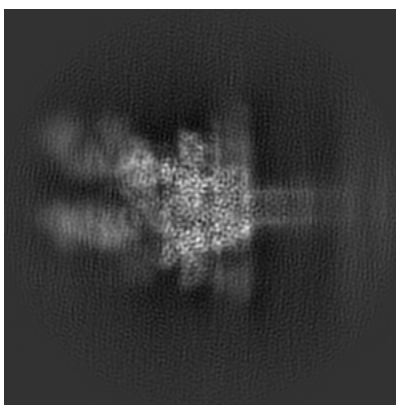
No raw map or half-maps were deposited for this entry and therefore no images, graphs, etc. pertaining to the raw map can be shown.

6.1 Orthogonal projections [i](#)

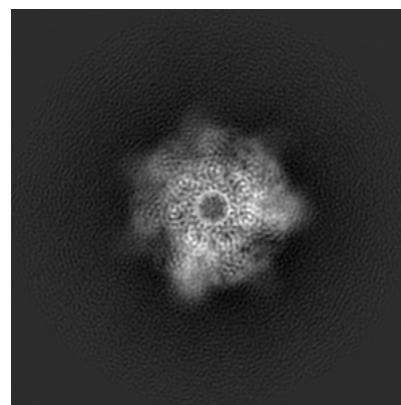
6.1.1 Primary map



X



Y

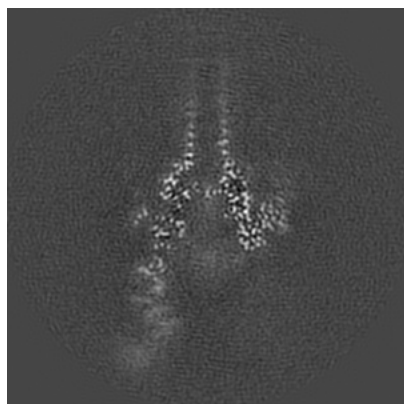


Z

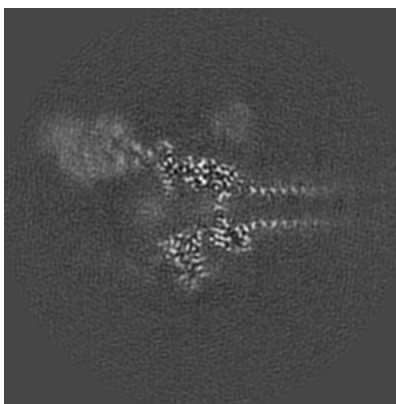
The images above show the map projected in three orthogonal directions.

6.2 Central slices [i](#)

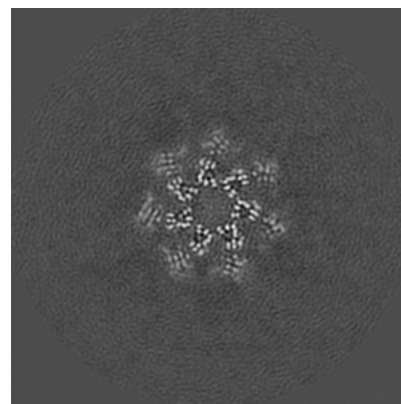
6.2.1 Primary map



X Index: 150



Y Index: 150

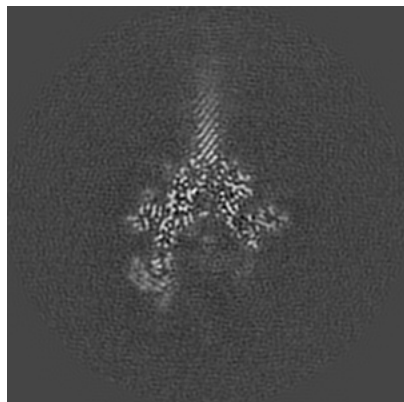


Z Index: 150

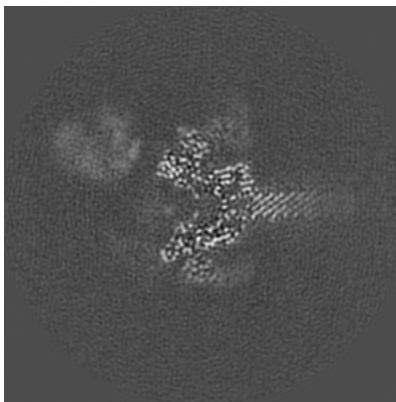
The images above show central slices of the map in three orthogonal directions.

6.3 Largest variance slices [i](#)

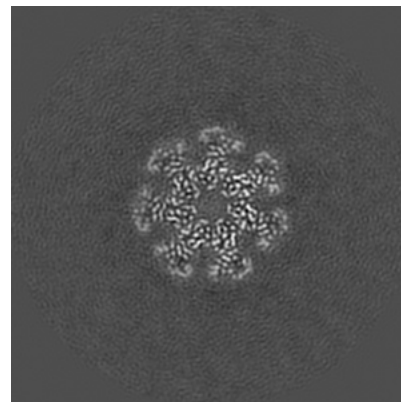
6.3.1 Primary map



X Index: 163



Y Index: 139

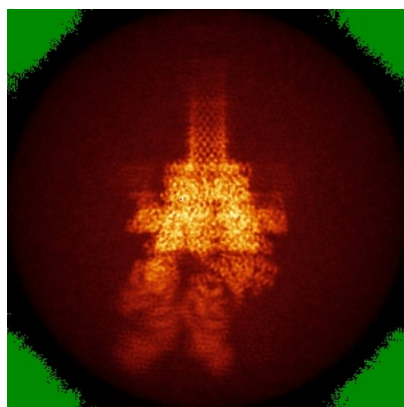


Z Index: 144

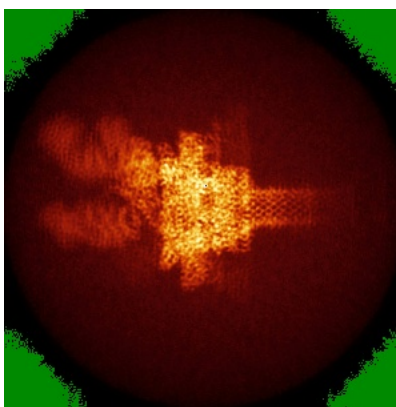
The images above show the largest variance slices of the map in three orthogonal directions.

6.4 Orthogonal standard-deviation projections (False-color) [i](#)

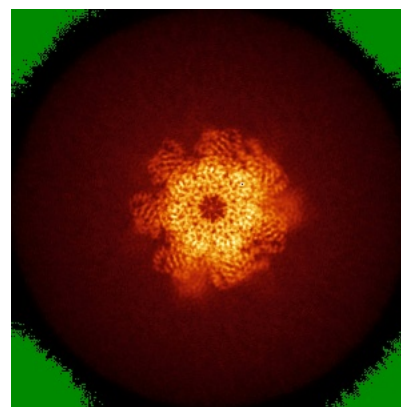
6.4.1 Primary map



X



Y

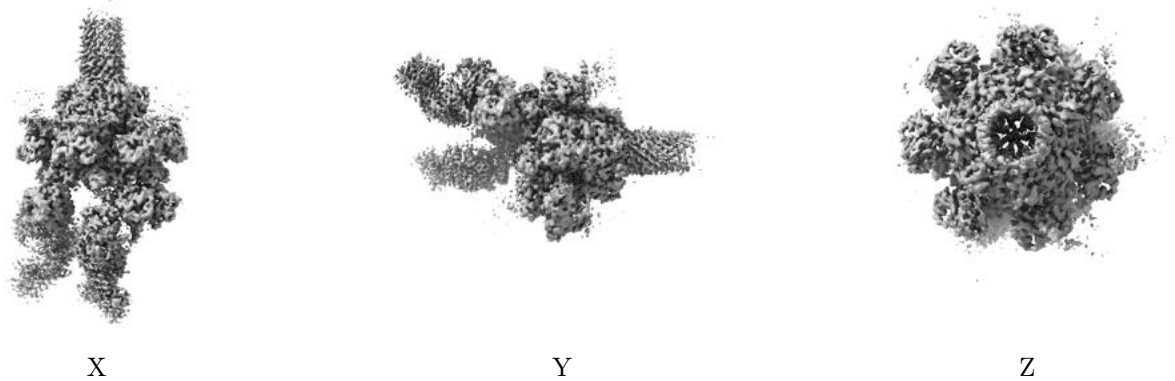


Z

The images above show the map standard deviation projections with false color in three orthogonal directions. Minimum values are shown in green, max in blue, and dark to light orange shades represent small to large values respectively.

6.5 Orthogonal surface views [i](#)

6.5.1 Primary map



The images above show the 3D surface view of the map at the recommended contour level 0.03. These images, in conjunction with the slice images, may facilitate assessment of whether an appropriate contour level has been provided.

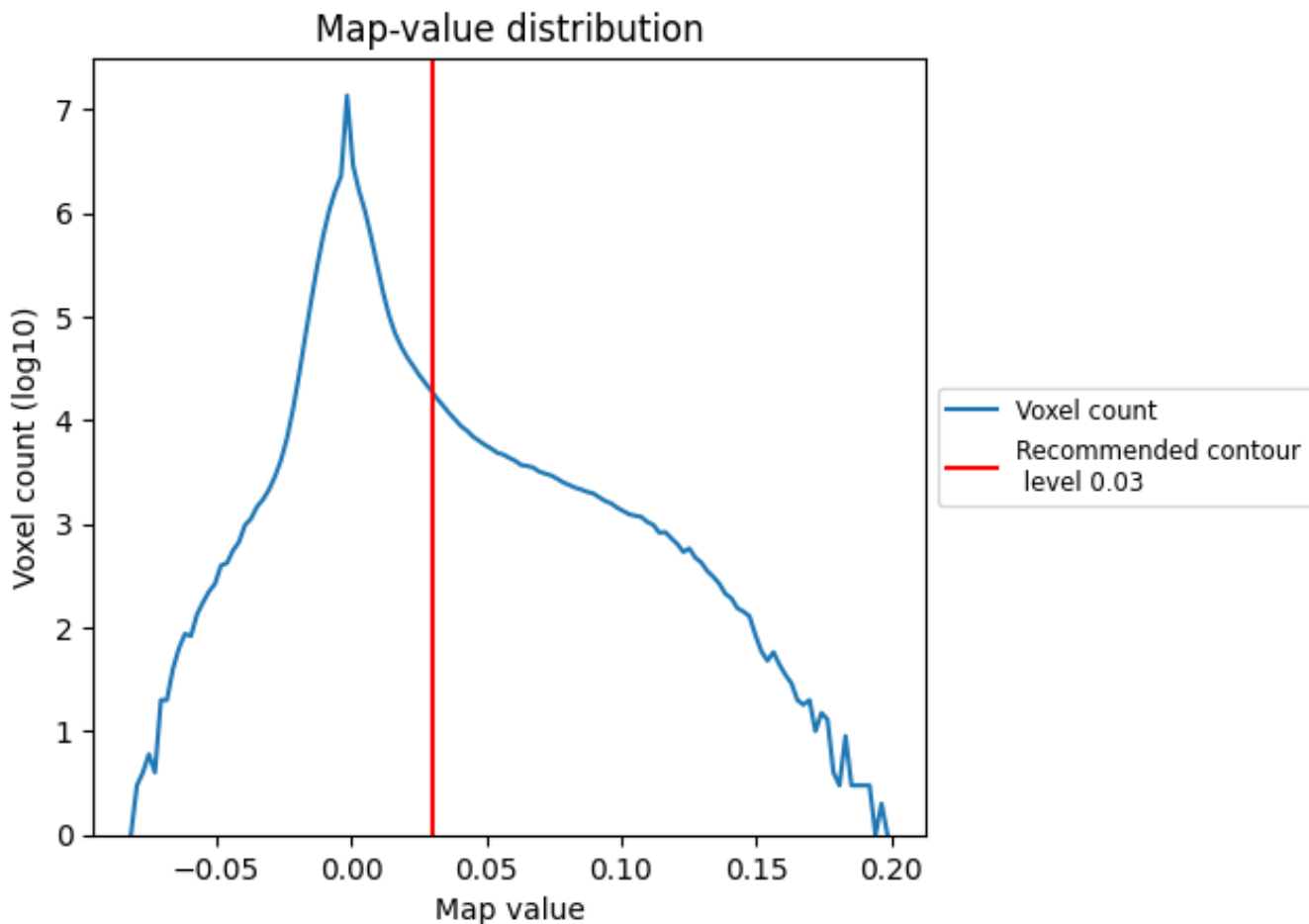
6.6 Mask visualisation [i](#)

This section was not generated. No masks/segmentation were deposited.

7 Map analysis [i](#)

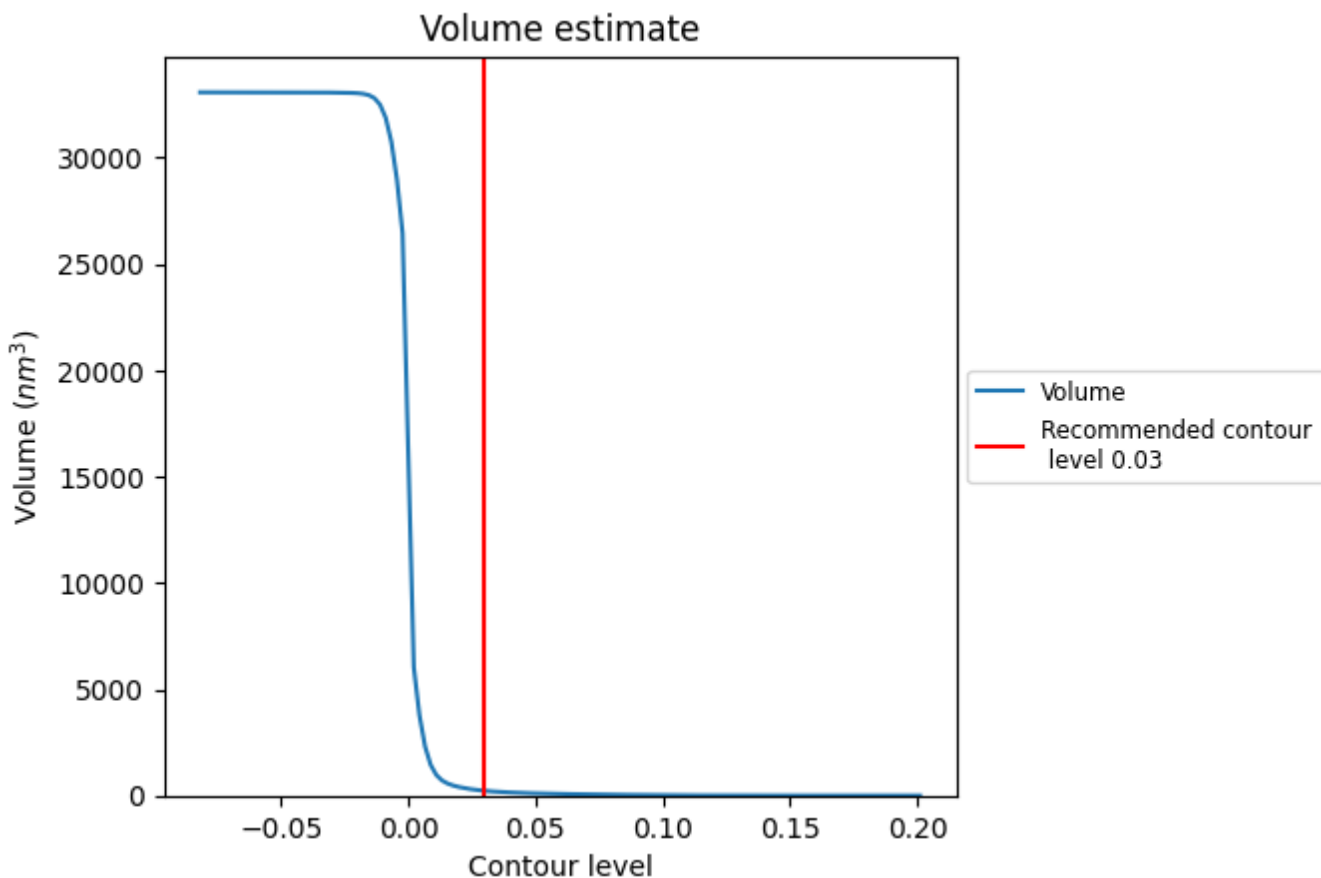
This section contains the results of statistical analysis of the map.

7.1 Map-value distribution [i](#)



The map-value distribution is plotted in 128 intervals along the x-axis. The y-axis is logarithmic. A spike in this graph at zero usually indicates that the volume has been masked.

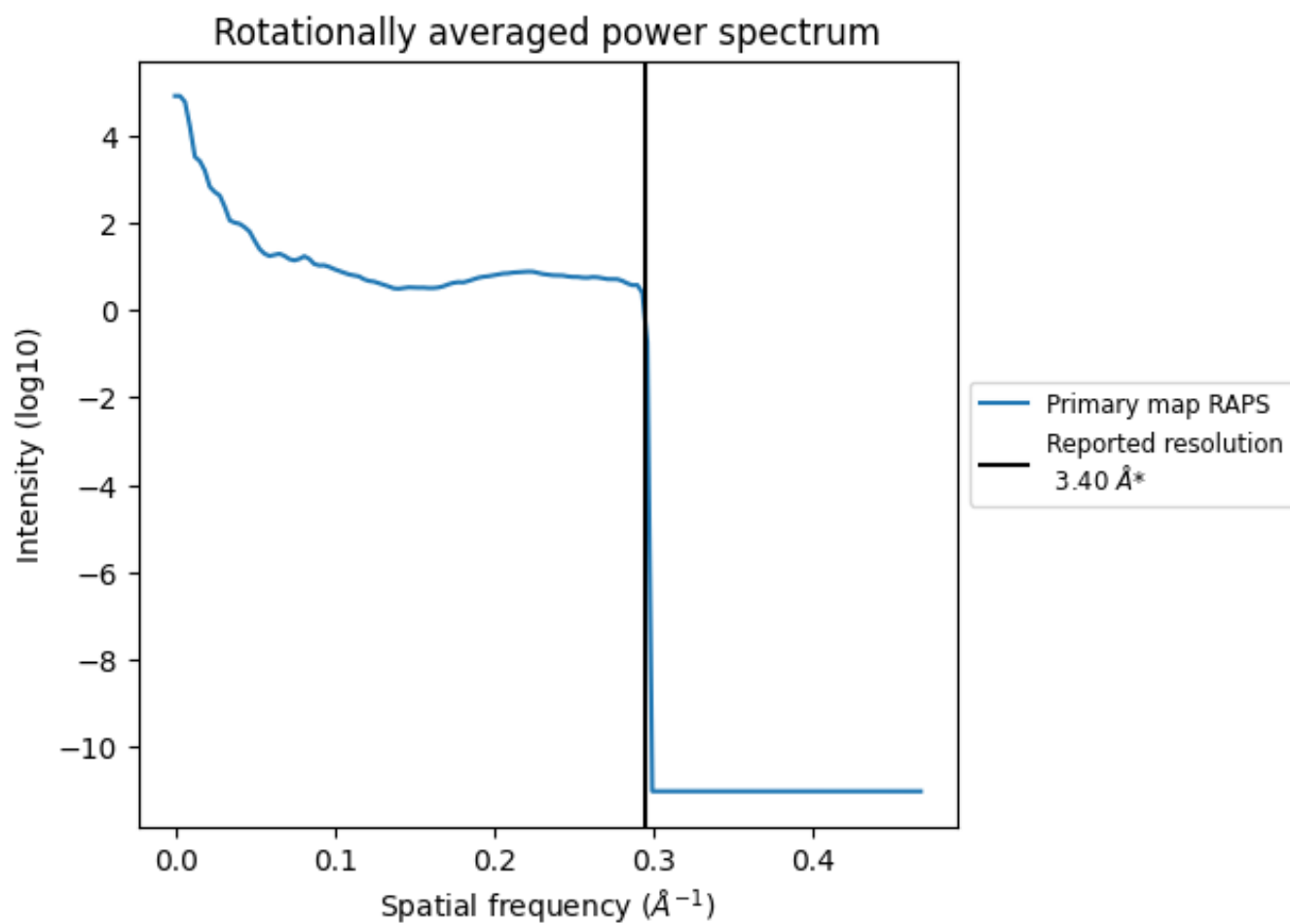
7.2 Volume estimate [i](#)



The volume at the recommended contour level is 226 nm^3 ; this corresponds to an approximate mass of 204 kDa.

The volume estimate graph shows how the enclosed volume varies with the contour level. The recommended contour level is shown as a vertical line and the intersection between the line and the curve gives the volume of the enclosed surface at the given level.

7.3 Rotationally averaged power spectrum [\(i\)](#)



*Reported resolution corresponds to spatial frequency of 0.294 Å⁻¹

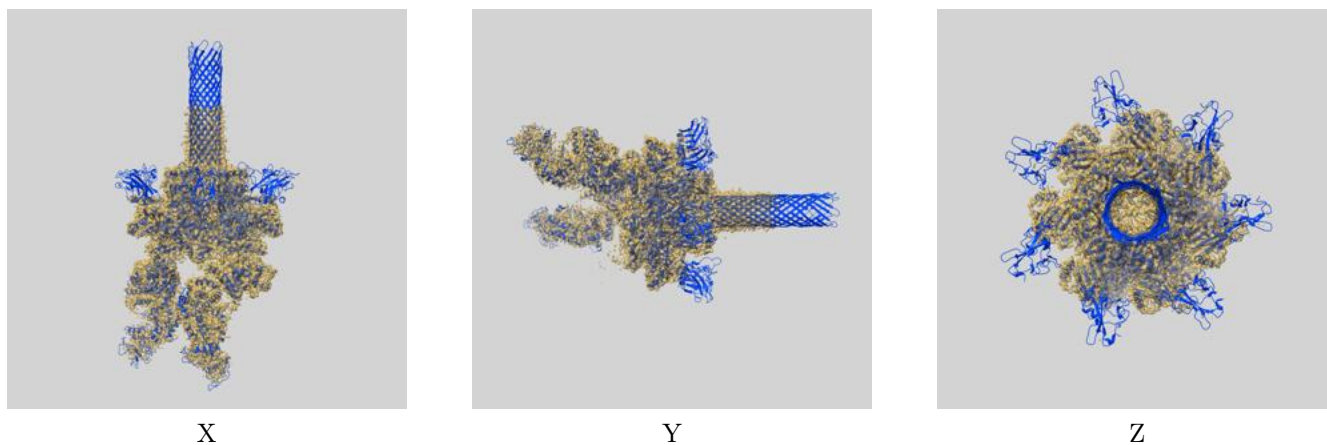
8 Fourier-Shell correlation

This section was not generated. No FSC curve or half-maps provided.

9 Map-model fit [i](#)

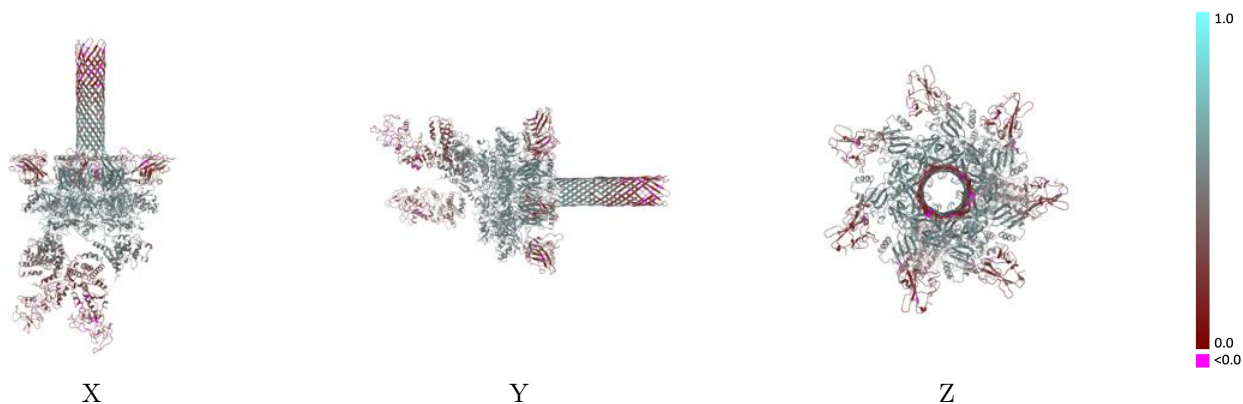
This section contains information regarding the fit between EMDB map EMD-20957 and PDB model 6UZD. Per-residue inclusion information can be found in section 3 on page 6.

9.1 Map-model overlay [i](#)



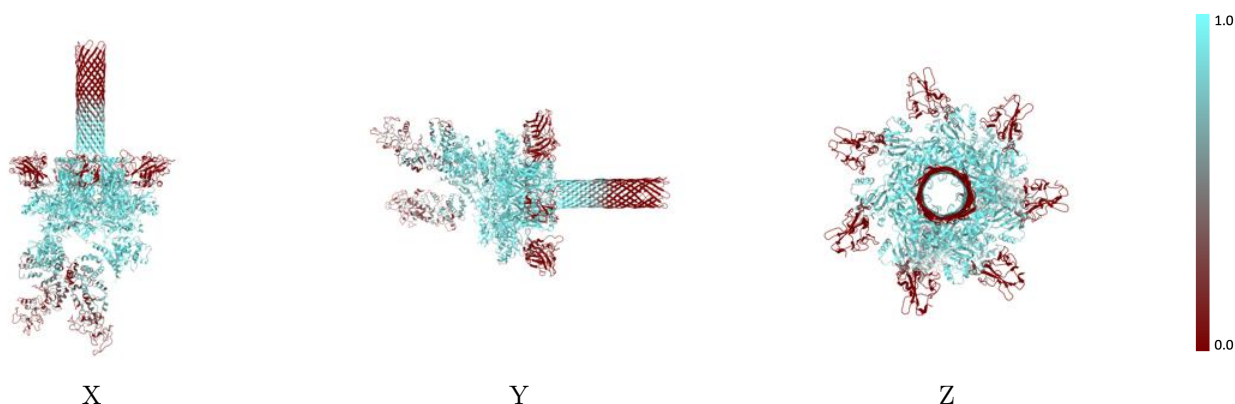
The images above show the 3D surface view of the map at the recommended contour level 0.03 at 50% transparency in yellow overlaid with a ribbon representation of the model coloured in blue. These images allow for the visual assessment of the quality of fit between the atomic model and the map.

9.2 Q-score mapped to coordinate model [i](#)



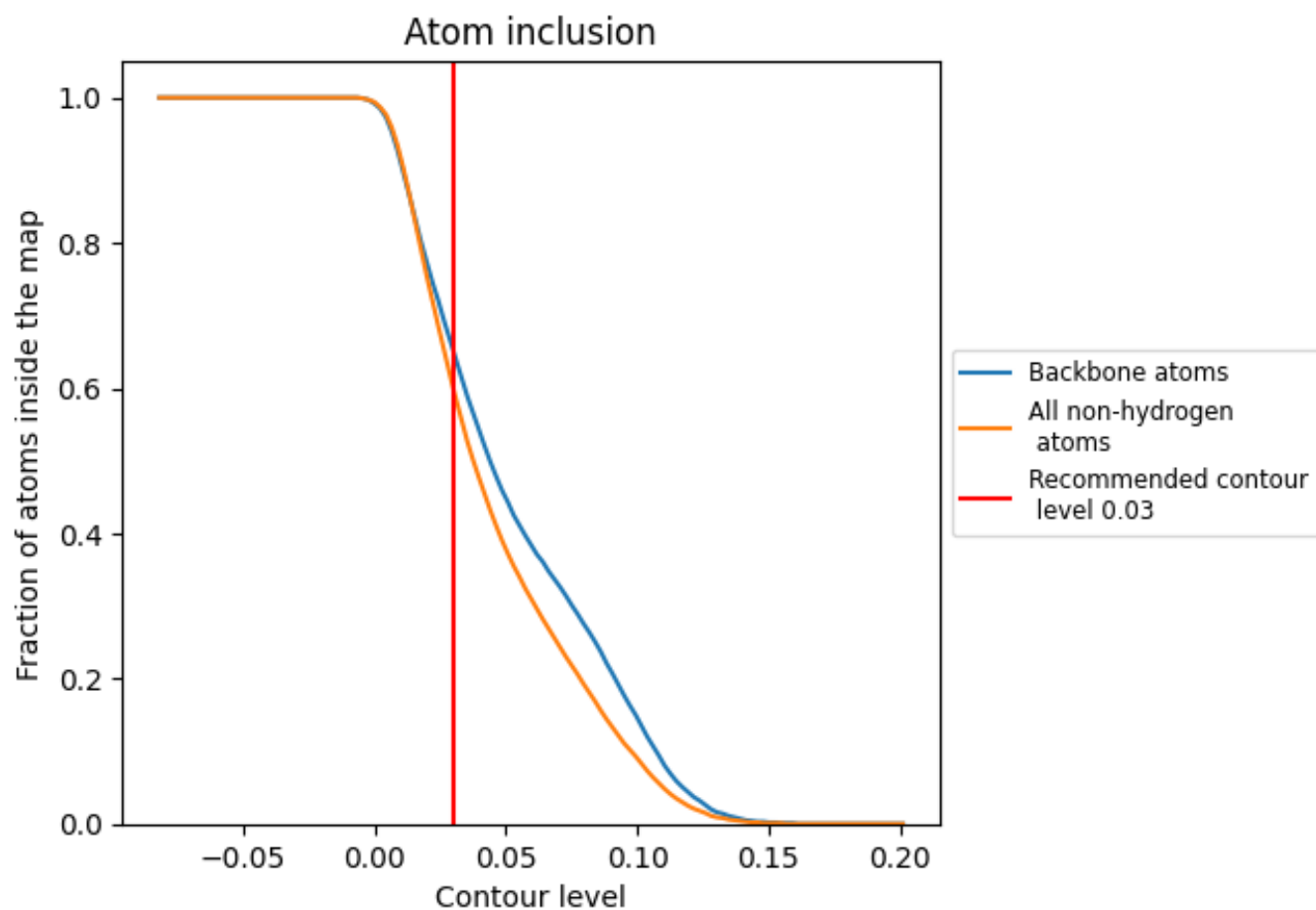
The images above show the model with each residue coloured according to its Q-score. This shows their resolvability in the map with higher Q-score values reflecting better resolvability. Please note: Q-score is calculating the resolvability of atoms, and thus high values are only expected at resolutions at which atoms can be resolved. Low Q-score values may therefore be expected for many entries.

9.3 Atom inclusion mapped to coordinate model [i](#)



The images above show the model with each residue coloured according to its atom inclusion. This shows to what extent they are inside the map at the recommended contour level (0.03).





















9.4 Atom inclusion [i](#)



At the recommended contour level, 65% of all backbone atoms, 60% of all non-hydrogen atoms, are inside the map.

9.5 Map-model fit summary

The table lists the average atom inclusion at the recommended contour level (0.03) and Q-score for the entire model and for each chain.

Chain	Atom inclusion	Q-score
All	 0.6000	 0.4360
A	 0.6410	 0.4730
B	 0.6460	 0.4800
C	 0.6440	 0.4710
D	 0.6300	 0.4730
E	 0.6110	 0.4670
F	 0.6140	 0.4650
G	 0.6190	 0.4690
H	 0.5440	 0.3390
I	 0.5030	 0.3440

