



# Full wwPDB X-ray Structure Validation Report ⓘ

Nov 22, 2023 – 10:56 AM JST

PDB ID : 7EJZ  
Title : Complex Structure of antibody BD-503 and RBD-S477N of COVID-19  
Authors : Xu, H.; Wang, B.; Zhao, T.N.; Su, X.D.  
Deposited on : 2021-04-03  
Resolution : 3.63 Å(reported)

This is a Full wwPDB X-ray Structure Validation Report for a publicly released PDB entry.

We welcome your comments at [validation@mail.wwpdb.org](mailto:validation@mail.wwpdb.org)

A user guide is available at

<https://www.wwpdb.org/validation/2017/XrayValidationReportHelp>

with specific help available everywhere you see the ⓘ symbol.

The types of validation reports are described at

<http://www.wwpdb.org/validation/2017/FAQs#types>.

---

The following versions of software and data (see [references ⓘ](#)) were used in the production of this report:

MolProbity : 4.02b-467  
Mogul : 1.8.5 (274361), CSD as541be (2020)  
Xtriage (Phenix) : 1.13  
EDS : 2.36  
buster-report : 1.1.7 (2018)  
Percentile statistics : 20191225.v01 (using entries in the PDB archive December 25th 2019)  
Refmac : 5.8.0158  
CCP4 : 7.0.044 (Gargrove)  
Ideal geometry (proteins) : Engh & Huber (2001)  
Ideal geometry (DNA, RNA) : Parkinson et al. (1996)  
Validation Pipeline (wwPDB-VP) : 2.36

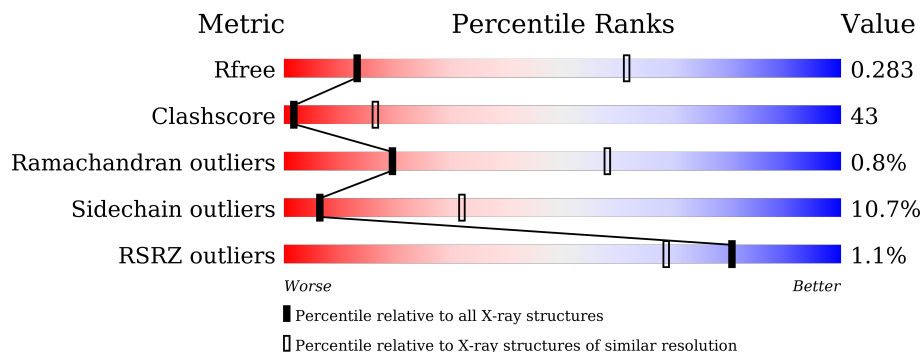
# 1 Overall quality at a glance

The following experimental techniques were used to determine the structure:

*X-RAY DIFFRACTION*

The reported resolution of this entry is 3.63 Å.

Percentile scores (ranging between 0-100) for global validation metrics of the entry are shown in the following graphic. The table shows the number of entries on which the scores are based.



Metric	Whole archive (#Entries)	Similar resolution (#Entries, resolution range(Å))
$R_{free}$	130704	1341 (3.78-3.50)
Clashscore	141614	1439 (3.78-3.50)
Ramachandran outliers	138981	1391 (3.78-3.50)
Sidechain outliers	138945	1391 (3.78-3.50)
RSRZ outliers	127900	1242 (3.78-3.50)

The table below summarises the geometric issues observed across the polymeric chains and their fit to the electron density. The red, orange, yellow and green segments of the lower bar indicate the fraction of residues that contain outliers for  $\geq 3$ , 2, 1 and 0 types of geometric quality criteria respectively. A grey segment represents the fraction of residues that are not modelled. The numeric value for each fraction is indicated below the corresponding segment, with a dot representing fractions  $\leq 5\%$ . The upper red bar (where present) indicates the fraction of residues that have poor fit to the electron density. The numeric value is given above the bar.

Mol	Chain	Length	Quality of chain
1	R	223	
2	H	222	
3	L	215	

The following table lists non-polymeric compounds, carbohydrate monomers and non-standard residues in protein, DNA, RNA chains that are outliers for geometric or electron-density-fit criteria:

Mol	Type	Chain	Res	Chirality	Geometry	Clashes	Electron density
4	NAG	R	601	-	-	-	X

## 2 Entry composition

There are 4 unique types of molecules in this entry. The entry contains 4788 atoms, of which 14 are hydrogens and 0 are deuteriums.

In the tables below, the ZeroOcc column contains the number of atoms modelled with zero occupancy, the AltConf column contains the number of residues with at least one atom in alternate conformation and the Trace column contains the number of residues modelled with at most 2 atoms.

- Molecule 1 is a protein called Spike protein S1.

Mol	Chain	Residues	Atoms					ZeroOcc	AltConf	Trace
			Total	C	N	O	S			
1	R	194	1538	986	257	287	8	0	0	0

There is a discrepancy between the modelled and reference sequences:

Chain	Residue	Modelled	Actual	Comment	Reference
R	477	ASN	SER	engineered mutation	UNP P0DTC2

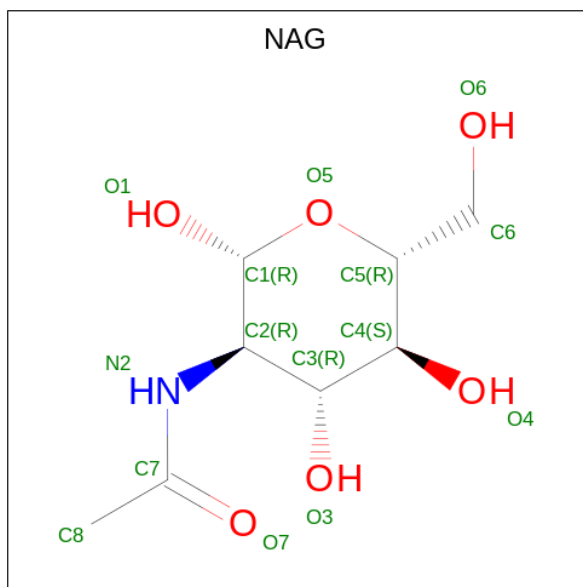
- Molecule 2 is a protein called Heavy Chain of BD-503.

Mol	Chain	Residues	Atoms					ZeroOcc	AltConf	Trace
			Total	C	N	O	S			
2	H	215	1583	996	267	314	6	0	0	0

- Molecule 3 is a protein called Light Chain of BD-503.

Mol	Chain	Residues	Atoms					ZeroOcc	AltConf	Trace
			Total	C	N	O	S			
3	L	214	1639	1027	272	335	5	0	0	0

- Molecule 4 is 2-acetamido-2-deoxy-beta-D-glucopyranose (three-letter code: NAG) (formula: C<sub>8</sub>H<sub>15</sub>NO<sub>6</sub>) (labeled as "Ligand of Interest" by depositor).



Mol	Chain	Residues	Atoms					ZeroOcc	AltConf
			Total	C	H	N	O		
4	R	1	28	8	14	1	5	0	0



Q167	D168	D171	S172	T173	Y174	S175	L176	S177	S178	K184	A185	D186	Y187	E188	K189	H190	Y193	A194	C195	E196	V197	T198	H199	Q200	G201	L202	S203	S204	P205	V206	T207	K208	S209	F210	E214	CYS
------	------	------	------	------	------	------	------	------	------	------	------	------	------	------	------	------	------	------	------	------	------	------	------	------	------	------	------	------	------	------	------	------	------	------	------	-----

## 4 Data and refinement statistics i

Property	Value	Source
Space group	C 2 2 21	Depositor
Cell constants a, b, c, $\alpha$ , $\beta$ , $\gamma$	80.71Å 145.91Å 146.79Å 90.00° 90.00° 90.00°	Depositor
Resolution (Å)	41.66 – 3.63 41.66 – 3.63	Depositor EDS
% Data completeness (in resolution range)	96.0 (41.66-3.63) 96.0 (41.66-3.63)	Depositor EDS
$R_{merge}$	(Not available)	Depositor
$R_{sym}$	(Not available)	Depositor
$\langle I/\sigma(I) \rangle$ <sup>1</sup>	5.23 (at 3.66Å)	Xtrriage
Refinement program	PHENIX 1.18.2_3874	Depositor
R, $R_{free}$	0.241 , 0.284 0.241 , 0.283	Depositor DCC
$R_{free}$ test set	966 reflections (9.97%)	wwPDB-VP
Wilson B-factor (Å <sup>2</sup> )	65.8	Xtrriage
Anisotropy	0.104	Xtrriage
Bulk solvent $k_{sol}$ (e/Å <sup>3</sup> ), $B_{sol}$ (Å <sup>2</sup> )	0.31 , 31.8	EDS
L-test for twinning <sup>2</sup>	$\langle  L  \rangle = 0.50$ , $\langle L^2 \rangle = 0.33$	Xtrriage
Estimated twinning fraction	0.004 for 1/2*h-1/2*k,-3/2*h-1/2*k,-l 0.021 for 1/2*h+1/2*k,3/2*h-1/2*k,-l	Xtrriage
$F_o, F_c$ correlation	0.84	EDS
Total number of atoms	4788	wwPDB-VP
Average B, all atoms (Å <sup>2</sup> )	71.0	wwPDB-VP

Xtrriage's analysis on translational NCS is as follows: *The largest off-origin peak in the Patterson function is 4.15% of the height of the origin peak. No significant pseudotranslation is detected.*

<sup>1</sup>Intensities estimated from amplitudes.

<sup>2</sup>Theoretical values of  $\langle |L| \rangle$ ,  $\langle L^2 \rangle$  for acentric reflections are 0.5, 0.333 respectively for untwinned datasets, and 0.375, 0.2 for perfectly twinned datasets.



## 5 Model quality [i](#)

### 5.1 Standard geometry [i](#)

Bond lengths and bond angles in the following residue types are not validated in this section: NAG

The Z score for a bond length (or angle) is the number of standard deviations the observed value is removed from the expected value. A bond length (or angle) with  $|Z| > 5$  is considered an outlier worth inspection. RMSZ is the root-mean-square of all Z scores of the bond lengths (or angles).

Mol	Chain	Bond lengths		Bond angles	
		RMSZ	# Z  >5	RMSZ	# Z  >5
1	R	0.40	0/1582	0.67	0/2154
2	H	0.49	0/1616	0.70	0/2201
3	L	0.46	0/1675	0.71	0/2276
All	All	0.45	0/4873	0.70	0/6631

There are no bond length outliers.

There are no bond angle outliers.

There are no chirality outliers.

There are no planarity outliers.

### 5.2 Too-close contacts [i](#)

In the following table, the Non-H and H(model) columns list the number of non-hydrogen atoms and hydrogen atoms in the chain respectively. The H(added) column lists the number of hydrogen atoms added and optimized by MolProbity. The Clashes column lists the number of clashes within the asymmetric unit, whereas Symm-Clashes lists symmetry-related clashes.

Mol	Chain	Non-H	H(model)	H(added)	Clashes	Symm-Clashes
1	R	1538	0	1453	129	0
2	H	1583	0	1568	135	0
3	L	1639	0	1595	155	0
4	R	14	14	13	2	0
All	All	4774	14	4629	408	0

The all-atom clashscore is defined as the number of clashes found per 1000 atoms (including hydrogen atoms). The all-atom clashscore for this structure is 43.

All (408) close contacts within the same asymmetric unit are listed below, sorted by their clash magnitude.

Atom-1	Atom-2	Interatomic distance (Å)	Clash overlap (Å)
3:L:4:MET:CE	3:L:90:GLN:HB3	1.44	1.47
2:H:197:THR:CG2	2:H:214:LYS:HE3	1.49	1.40
2:H:197:THR:CG2	2:H:214:LYS:CE	2.25	1.15
3:L:137:LEU:HD22	3:L:197:VAL:HG11	1.16	1.14
3:L:33:LEU:HG	3:L:89:GLN:O	1.51	1.11
3:L:7:SER:HB3	3:L:8:PRO:HD2	1.22	1.11
3:L:143:ARG:NH1	3:L:164:VAL:HG21	1.62	1.11
2:H:123:PRO:HB3	2:H:149:TYR:CB	1.82	1.08
2:H:12:ILE:HG21	2:H:18:LEU:CD2	1.83	1.08
2:H:123:PRO:CB	2:H:149:TYR:HB3	1.81	1.08
3:L:137:LEU:HD11	3:L:147:VAL:CG2	1.82	1.08
2:H:12:ILE:HG21	2:H:18:LEU:HD23	1.12	1.08
3:L:137:LEU:HD21	3:L:197:VAL:HG21	1.31	1.07
2:H:197:THR:HG21	2:H:214:LYS:HE3	1.33	1.07
1:R:377:PHE:CE1	1:R:434:ILE:HG12	1.89	1.06
1:R:377:PHE:CD1	1:R:434:ILE:HG12	1.90	1.06
2:H:121:LYS:HE3	2:H:148:ASP:O	1.52	1.06
3:L:11:LEU:CD2	3:L:105:VAL:HG22	1.84	1.05
1:R:393:THR:HA	1:R:522:ALA:HA	1.31	1.05
3:L:4:MET:HE2	3:L:90:GLN:CB	1.87	1.04
1:R:418:ILE:HA	1:R:422:ASN:HD22	1.15	1.04
3:L:34:ASN:HB3	3:L:49:TYR:HA	1.39	1.03
3:L:140:PHE:CE1	3:L:174:TYR:HB2	1.94	1.03
1:R:365:TYR:CD2	1:R:387:LEU:CD2	2.41	1.02
3:L:7:SER:HB3	3:L:8:PRO:CD	1.88	1.02
2:H:20:LEU:CD1	2:H:80:LEU:HD22	1.89	1.02
3:L:4:MET:CE	3:L:90:GLN:CB	2.38	1.00
3:L:143:ARG:HH12	3:L:164:VAL:HG21	1.24	1.00
2:H:12:ILE:HB	2:H:18:LEU:HD21	1.42	0.99
3:L:151:VAL:HG22	3:L:193:TYR:CD1	1.98	0.98
1:R:393:THR:HG22	1:R:517:LEU:HA	1.43	0.98
3:L:11:LEU:HD21	3:L:105:VAL:CG2	1.93	0.98
2:H:12:ILE:CG2	2:H:18:LEU:HD23	1.93	0.98
1:R:365:TYR:CG	1:R:387:LEU:CD2	2.47	0.97
3:L:137:LEU:HD21	3:L:197:VAL:CG2	1.94	0.96
3:L:137:LEU:CD2	3:L:197:VAL:HG11	1.96	0.96
3:L:4:MET:HE2	3:L:90:GLN:HB3	0.99	0.96
3:L:11:LEU:HD21	3:L:105:VAL:HG22	0.97	0.95
1:R:418:ILE:HA	1:R:422:ASN:ND2	1.80	0.94
2:H:197:THR:HG22	2:H:214:LYS:HE3	1.50	0.93
1:R:455:LEU:HD21	2:H:100:ALA:HB1	1.48	0.92
1:R:357:ARG:HB2	1:R:357:ARG:NH2	1.85	0.92

*Continued on next page...*

*Continued from previous page...*

Atom-1	Atom-2	Interatomic distance (Å)	Clash overlap (Å)
3:L:140:PHE:HE1	3:L:174:TYR:CB	1.82	0.91
3:L:4:MET:HE1	3:L:90:GLN:HB3	1.51	0.91
3:L:7:SER:CB	3:L:8:PRO:CD	2.48	0.91
2:H:12:ILE:CB	2:H:18:LEU:HD21	2.00	0.90
2:H:120:THR:HG23	2:H:151:PRO:HD3	1.55	0.89
2:H:156:VAL:HG23	2:H:169:THR:HG21	1.55	0.88
1:R:403:ARG:HH11	1:R:403:ARG:HG2	1.36	0.88
2:H:197:THR:HG23	2:H:214:LYS:CE	2.00	0.88
2:H:12:ILE:CG2	2:H:18:LEU:CD2	2.52	0.87
1:R:455:LEU:HD21	2:H:100:ALA:CB	2.05	0.87
3:L:139:ASN:ND2	3:L:139:ASN:O	2.08	0.87
3:L:33:LEU:CG	3:L:89:GLN:O	2.21	0.86
1:R:400:PHE:CE2	1:R:410:ILE:HD11	2.11	0.86
1:R:439:ASN:HD21	1:R:499:PRO:HA	1.41	0.85
1:R:400:PHE:HE2	1:R:410:ILE:HD11	1.43	0.84
3:L:137:LEU:CD2	3:L:197:VAL:HG21	2.05	0.84
1:R:365:TYR:CG	1:R:387:LEU:HD22	2.11	0.84
3:L:140:PHE:CE1	3:L:174:TYR:CB	2.60	0.84
2:H:40:ALA:HB1	2:H:41:PRO:HD2	1.59	0.83
2:H:154:VAL:HG22	2:H:203:ASN:O	1.77	0.83
2:H:20:LEU:HD12	2:H:80:LEU:HD22	1.60	0.83
1:R:380:TYR:O	1:R:430:THR:HA	1.79	0.83
3:L:171:ASP:HB3	3:L:173:THR:HG23	1.59	0.82
3:L:202:LEU:HD13	3:L:206:VAL:HG23	1.62	0.82
2:H:36:TRP:O	2:H:48:VAL:HG22	1.80	0.81
2:H:164:THR:O	2:H:167:VAL:HG12	1.80	0.81
1:R:365:TYR:CD2	1:R:387:LEU:HD21	2.14	0.81
3:L:137:LEU:HD22	3:L:197:VAL:CG1	2.06	0.81
3:L:25:ALA:CB	3:L:29:ILE:HD12	2.11	0.80
2:H:197:THR:HG21	2:H:214:LYS:CE	1.99	0.80
2:H:120:THR:HG23	2:H:151:PRO:CD	2.12	0.80
2:H:20:LEU:HD11	2:H:82:MET:SD	2.22	0.80
1:R:365:TYR:CD2	1:R:387:LEU:HD23	2.18	0.79
3:L:34:ASN:CB	3:L:48:ILE:O	2.32	0.78
3:L:143:ARG:HH12	3:L:164:VAL:CG2	1.97	0.77
2:H:86:ARG:O	2:H:115:VAL:HG11	1.84	0.77
2:H:173:VAL:O	2:H:180:TYR:HA	1.83	0.77
1:R:342:PHE:HZ	1:R:434:ILE:HD12	1.49	0.77
1:R:357:ARG:HB2	1:R:357:ARG:HH21	1.47	0.77
2:H:67:PHE:CZ	2:H:82:MET:HE2	2.19	0.77
2:H:30:SER:OG	2:H:73:ASN:HB3	1.85	0.77

*Continued on next page...*

*Continued from previous page...*

Atom-1	Atom-2	Interatomic distance (Å)	Clash overlap (Å)
1:R:335:LEU:HA	1:R:362:VAL:HG12	1.68	0.76
2:H:158:TRP:CD1	2:H:167:VAL:HG21	2.21	0.76
2:H:197:THR:HG23	2:H:214:LYS:HE2	1.66	0.76
3:L:6:GLN:HG2	3:L:103:THR:OG1	1.86	0.75
3:L:168:ASP:HB3	3:L:171:ASP:HB2	1.67	0.75
3:L:124:GLU:OE1	3:L:124:GLU:N	2.19	0.75
1:R:377:PHE:HE1	1:R:434:ILE:HG12	1.51	0.75
3:L:151:VAL:HG22	3:L:193:TYR:CE1	2.21	0.74
1:R:347:PHE:HE2	1:R:509:ARG:HB3	1.53	0.74
2:H:32:ASN:ND2	2:H:97:ARG:HD2	2.03	0.74
2:H:100:ALA:HA	3:L:94:THR:HG23	1.69	0.74
1:R:362:VAL:HG22	1:R:363:ALA:H	1.54	0.73
3:L:34:ASN:HB3	3:L:48:ILE:O	1.89	0.73
1:R:377:PHE:HD1	1:R:434:ILE:HG12	1.53	0.73
3:L:137:LEU:HD11	3:L:147:VAL:HG21	1.71	0.73
3:L:33:LEU:C	3:L:33:LEU:HD23	2.09	0.73
1:R:403:ARG:HH11	1:R:403:ARG:CG	2.02	0.72
2:H:66:ARG:NH2	2:H:89:ASP:OD2	2.22	0.72
2:H:151:PRO:HD2	2:H:206:PRO:HB2	1.71	0.72
1:R:365:TYR:CG	1:R:387:LEU:HD21	2.24	0.72
1:R:518:LEU:HG	1:R:519:HIS:H	1.55	0.72
2:H:34:MET:HB3	2:H:78:LEU:HD22	1.69	0.71
2:H:199:ILE:HG12	2:H:214:LYS:HA	1.71	0.71
2:H:20:LEU:HD12	2:H:80:LEU:HB3	1.72	0.71
2:H:12:ILE:CB	2:H:18:LEU:CD2	2.68	0.71
3:L:151:VAL:CG2	3:L:193:TYR:CD1	2.73	0.71
2:H:172:ALA:HB2	2:H:182:LEU:HD23	1.72	0.70
1:R:364:ASP:O	1:R:367:VAL:HG22	1.91	0.70
1:R:437:ASN:HB2	1:R:508:TYR:CZ	2.26	0.70
3:L:66:GLY:HA3	3:L:71:PHE:HA	1.73	0.70
1:R:377:PHE:CE1	1:R:434:ILE:CG1	2.71	0.69
2:H:200:CYS:O	2:H:200:CYS:SG	2.50	0.69
3:L:146:LYS:HB2	3:L:198:THR:OG1	1.93	0.69
2:H:6:GLU:HA	2:H:21:SER:O	1.92	0.69
2:H:20:LEU:HD12	2:H:80:LEU:CD2	2.23	0.69
2:H:156:VAL:HG21	2:H:169:THR:HG23	1.73	0.69
1:R:347:PHE:CE2	1:R:509:ARG:HB3	2.27	0.69
1:R:414:GLN:O	1:R:424:LYS:NZ	2.26	0.68
2:H:156:VAL:CG2	2:H:169:THR:HG21	2.22	0.68
3:L:137:LEU:HD12	3:L:176:LEU:HD23	1.73	0.68
2:H:93:TYR:O	2:H:111:THR:HG22	1.94	0.68

*Continued on next page...*

*Continued from previous page...*

Atom-1	Atom-2	Interatomic distance (Å)	Clash overlap (Å)
3:L:37:GLN:HB2	3:L:47:LEU:HD11	1.73	0.68
3:L:164:VAL:HG12	3:L:176:LEU:HD13	1.74	0.68
2:H:51:LEU:HD23	2:H:52:TYR:O	1.92	0.68
2:H:175:GLN:HG2	2:H:179:LEU:O	1.94	0.67
3:L:137:LEU:HD11	3:L:147:VAL:HG22	1.74	0.67
3:L:184:LYS:O	3:L:188:GLU:HG2	1.94	0.67
1:R:497:PHE:CE2	1:R:507:PRO:HB3	2.30	0.67
3:L:106:ASP:HB2	3:L:167:GLN:OE1	1.95	0.67
2:H:100:ALA:HA	3:L:94:THR:CG2	2.24	0.67
1:R:377:PHE:HE1	1:R:434:ILE:CG1	2.07	0.66
3:L:16:GLY:HA2	3:L:77:SER:OG	1.94	0.66
1:R:403:ARG:HG2	1:R:403:ARG:NH1	2.11	0.66
1:R:418:ILE:CA	1:R:422:ASN:HD22	1.99	0.66
1:R:518:LEU:HG	1:R:519:HIS:N	2.11	0.66
1:R:437:ASN:HB2	1:R:508:TYR:CE2	2.31	0.66
1:R:365:TYR:CB	1:R:387:LEU:HD22	2.26	0.66
3:L:28:SER:HA	3:L:68:GLY:O	1.96	0.65
2:H:97:ARG:NH1	2:H:105:ASP:OD2	2.28	0.65
1:R:393:THR:CG2	1:R:517:LEU:HA	2.22	0.65
1:R:342:PHE:HZ	1:R:434:ILE:CD1	2.09	0.65
2:H:36:TRP:CD1	2:H:80:LEU:HD12	2.32	0.65
1:R:447:GLY:HA2	1:R:497:PHE:O	1.96	0.65
2:H:123:PRO:HB3	2:H:149:TYR:HB3	0.86	0.64
2:H:67:PHE:CZ	2:H:82:MET:CE	2.80	0.64
2:H:156:VAL:CG2	2:H:169:THR:CG2	2.74	0.64
2:H:121:LYS:O	2:H:121:LYS:HG2	1.98	0.64
2:H:172:ALA:HA	2:H:182:LEU:HB3	1.79	0.64
2:H:150:PHE:HB2	2:H:179:LEU:HD22	1.80	0.64
1:R:338:PHE:HE1	1:R:358:ILE:HD13	1.62	0.63
3:L:152:ASP:OD2	3:L:190:HIS:HB3	1.98	0.63
1:R:419:ALA:O	1:R:424:LYS:HB2	1.99	0.63
3:L:2:ILE:HG21	3:L:29:ILE:HD11	1.81	0.62
2:H:6:GLU:OE2	2:H:108:GLY:C	2.38	0.62
1:R:335:LEU:CD2	1:R:362:VAL:HG11	2.30	0.61
1:R:335:LEU:HD23	1:R:362:VAL:HG11	1.83	0.61
3:L:171:ASP:HB3	3:L:173:THR:CG2	2.30	0.61
2:H:6:GLU:HG2	2:H:95:CYS:SG	2.40	0.61
1:R:410:ILE:O	1:R:410:ILE:HG22	2.01	0.61
1:R:400:PHE:CE2	1:R:410:ILE:CD1	2.83	0.61
3:L:150:LYS:NZ	3:L:196:GLU:OE1	2.30	0.61
2:H:51:LEU:HB2	2:H:69:ILE:HD13	1.83	0.60

*Continued on next page...*

*Continued from previous page...*

Atom-1	Atom-2	Interatomic distance (Å)	Clash overlap (Å)
1:R:365:TYR:CE2	1:R:387:LEU:HD21	2.36	0.60
2:H:121:LYS:N	2:H:150:PHE:O	2.34	0.60
2:H:156:VAL:HG21	2:H:169:THR:CG2	2.31	0.60
3:L:137:LEU:HD11	3:L:147:VAL:HG23	1.82	0.60
1:R:421:TYR:CD1	1:R:457:ARG:HB3	2.37	0.60
1:R:338:PHE:CE1	1:R:358:ILE:HD13	2.37	0.59
1:R:400:PHE:CZ	1:R:410:ILE:CD1	2.85	0.59
3:L:137:LEU:CD2	3:L:197:VAL:CG1	2.71	0.59
2:H:20:LEU:HD11	2:H:80:LEU:HD22	1.79	0.59
2:H:68:THR:HG22	2:H:68:THR:O	2.01	0.59
3:L:184:LYS:O	3:L:188:GLU:CG	2.50	0.59
1:R:362:VAL:HG22	1:R:363:ALA:N	2.17	0.59
2:H:4:LEU:HD23	2:H:24:ALA:HA	1.85	0.59
3:L:202:LEU:HD13	3:L:206:VAL:CG2	2.31	0.59
1:R:362:VAL:HA	1:R:525:CYS:O	2.01	0.59
1:R:400:PHE:HZ	1:R:410:ILE:HD13	1.68	0.59
3:L:25:ALA:HB3	3:L:29:ILE:HD12	1.83	0.59
3:L:184:LYS:O	3:L:184:LYS:HG2	2.02	0.58
1:R:354:ASN:O	1:R:398:ASP:HA	2.04	0.58
2:H:113:VAL:HG12	2:H:113:VAL:O	2.04	0.58
3:L:140:PHE:CE1	3:L:174:TYR:C	2.77	0.58
2:H:27:LEU:HD22	2:H:97:ARG:HD3	1.86	0.58
1:R:490:PHE:CD1	1:R:491:PRO:HD2	2.39	0.57
3:L:164:VAL:HG12	3:L:176:LEU:CD1	2.33	0.57
3:L:79:GLN:O	3:L:82:ASP:OD1	2.22	0.57
1:R:335:LEU:CD2	1:R:362:VAL:CG1	2.82	0.57
1:R:335:LEU:HD23	1:R:362:VAL:CG1	2.34	0.57
1:R:377:PHE:HE1	1:R:434:ILE:CD1	2.17	0.57
1:R:387:LEU:HD23	1:R:387:LEU:O	2.04	0.57
2:H:151:PRO:O	2:H:204:HIS:NE2	2.29	0.57
2:H:37:VAL:HG21	2:H:45:LEU:HD12	1.87	0.56
2:H:47:TRP:HE1	2:H:50:VAL:CG2	2.18	0.56
3:L:116:VAL:HA	3:L:136:LEU:O	2.04	0.56
1:R:493:GLN:OE1	1:R:493:GLN:HA	2.03	0.56
1:R:517:LEU:HG	1:R:517:LEU:O	2.04	0.56
3:L:113:ALA:HB1	3:L:202:LEU:CD2	2.34	0.56
3:L:28:SER:CA	3:L:68:GLY:O	2.54	0.56
3:L:113:ALA:HB1	3:L:202:LEU:HD21	1.88	0.56
3:L:140:PHE:N	3:L:140:PHE:CD1	2.72	0.56
2:H:148:ASP:OD1	2:H:175:GLN:NE2	2.38	0.56
3:L:151:VAL:HG12	3:L:151:VAL:O	2.04	0.56

*Continued on next page...*

*Continued from previous page...*

Atom-1	Atom-2	Interatomic distance (Å)	Clash overlap (Å)
3:L:176:LEU:HG	3:L:177:SER:N	2.21	0.56
3:L:33:LEU:HD22	3:L:71:PHE:CD2	2.41	0.55
1:R:398:ASP:O	1:R:511:VAL:HA	2.06	0.55
1:R:487:ASN:OD1	2:H:97:ARG:NH2	2.40	0.55
1:R:438:SER:O	1:R:438:SER:OG	2.23	0.55
2:H:59:TYR:CD1	2:H:59:TYR:N	2.73	0.55
2:H:70:SER:O	2:H:78:LEU:HD12	2.07	0.55
1:R:400:PHE:CZ	1:R:410:ILE:HD13	2.42	0.55
3:L:143:ARG:CZ	3:L:164:VAL:HG21	2.33	0.55
3:L:185:ALA:O	3:L:189:LYS:HG3	2.06	0.55
1:R:363:ALA:HB3	1:R:365:TYR:CE2	2.41	0.55
3:L:33:LEU:HB3	3:L:71:PHE:HE2	1.72	0.55
2:H:115:VAL:HG12	2:H:115:VAL:O	2.07	0.54
3:L:152:ASP:OD2	3:L:190:HIS:CB	2.55	0.54
2:H:36:TRP:HB2	2:H:48:VAL:CG2	2.37	0.54
3:L:63:SER:HB3	3:L:74:THR:OG1	2.08	0.54
3:L:151:VAL:CG2	3:L:193:TYR:CE1	2.91	0.54
1:R:502:GLY:N	3:L:27:GLN:OE1	2.28	0.54
2:H:121:LYS:CE	2:H:148:ASP:O	2.43	0.54
3:L:33:LEU:HB3	3:L:71:PHE:CE2	2.43	0.54
3:L:93:THR:O	3:L:93:THR:OG1	2.22	0.54
2:H:92:VAL:HG22	2:H:112:THR:HG22	1.90	0.53
2:H:117:SER:O	2:H:117:SER:OG	2.17	0.53
3:L:19:VAL:HG11	3:L:78:LEU:HD13	1.90	0.53
1:R:524:VAL:HG12	1:R:524:VAL:O	2.07	0.53
3:L:136:LEU:HD22	3:L:138:ASN:HB2	1.89	0.53
3:L:11:LEU:H	3:L:11:LEU:HD23	1.74	0.53
2:H:218:LYS:HE2	2:H:218:LYS:HA	1.91	0.53
1:R:359:SER:OG	1:R:394:ASN:CB	2.57	0.52
2:H:192:SER:HA	2:H:195:THR:CG2	2.39	0.52
3:L:140:PHE:HE1	3:L:174:TYR:HB3	1.71	0.52
1:R:406:GLU:OE1	1:R:418:ILE:CG1	2.58	0.52
2:H:47:TRP:CZ2	2:H:50:VAL:HG23	2.44	0.52
1:R:396:TYR:HB2	1:R:514:SER:HB2	1.91	0.52
2:H:192:SER:HA	2:H:195:THR:HG23	1.92	0.51
2:H:99:ALA:HB3	2:H:103:GLY:O	2.10	0.51
2:H:120:THR:HA	2:H:150:PHE:O	2.11	0.51
3:L:85:THR:HG23	3:L:104:LYS:HB2	1.91	0.51
3:L:114:PRO:HD3	3:L:199:HIS:ND1	2.25	0.51
2:H:73:ASN:OD1	2:H:73:ASN:N	2.22	0.51
3:L:151:VAL:CG2	3:L:193:TYR:HD1	2.19	0.51

*Continued on next page...*

*Continued from previous page...*

Atom-1	Atom-2	Interatomic distance (Å)	Clash overlap (Å)
3:L:7:SER:OG	3:L:8:PRO:HD3	2.11	0.51
3:L:34:ASN:CA	3:L:48:ILE:O	2.59	0.50
3:L:140:PHE:HE1	3:L:174:TYR:C	2.15	0.50
2:H:157:SER:OG	2:H:201:ASN:HB2	2.12	0.50
2:H:36:TRP:C	2:H:48:VAL:HG22	2.32	0.50
3:L:55:GLN:HB3	3:L:58:VAL:HG21	1.93	0.50
3:L:199:HIS:CD2	3:L:200:GLN:H	2.30	0.50
3:L:109:ARG:HG2	3:L:110:THR:N	2.27	0.50
1:R:438:SER:OG	1:R:509:ARG:HG3	2.12	0.49
2:H:80:LEU:HD23	2:H:82:MET:HG3	1.94	0.49
3:L:139:ASN:HA	3:L:174:TYR:O	2.12	0.49
2:H:130:PRO:HG2	2:H:217:PRO:HG3	1.94	0.49
3:L:195:CYS:O	3:L:207:THR:HA	2.12	0.49
1:R:421:TYR:CE1	1:R:457:ARG:HB3	2.47	0.49
3:L:19:VAL:CG1	3:L:78:LEU:HD13	2.42	0.49
3:L:204:SER:HB2	3:L:205:PRO:CD	2.43	0.49
1:R:400:PHE:CZ	1:R:410:ILE:HD11	2.45	0.49
1:R:473:TYR:OH	2:H:31:SER:HB2	2.12	0.49
2:H:12:ILE:HG23	2:H:12:ILE:O	2.12	0.49
1:R:350:VAL:HG22	1:R:422:ASN:HB3	1.95	0.48
2:H:168:HIS:N	2:H:185:VAL:O	2.39	0.48
3:L:21:ILE:HG23	3:L:103:THR:HG21	1.94	0.48
2:H:22:CYS:HB3	2:H:78:LEU:HB3	1.94	0.48
3:L:149:TRP:HZ2	3:L:178:SER:O	1.96	0.48
1:R:359:SER:HA	1:R:524:VAL:CG2	2.43	0.48
1:R:424:LYS:O	1:R:463:PRO:HA	2.13	0.48
2:H:87:ALA:HA	2:H:115:VAL:HG12	1.95	0.48
3:L:79:GLN:HG3	3:L:80:PRO:CD	2.44	0.48
3:L:120:PRO:HB3	3:L:210:PHE:CZ	2.48	0.48
1:R:441:LEU:O	1:R:441:LEU:HD23	2.13	0.48
1:R:456:PHE:CZ	2:H:100:ALA:HB3	2.49	0.48
1:R:368:LEU:O	1:R:374:PHE:HE2	1.97	0.48
2:H:5:VAL:HG23	2:H:5:VAL:O	2.13	0.48
3:L:4:MET:SD	3:L:25:ALA:HB2	2.53	0.48
3:L:33:LEU:HD23	3:L:33:LEU:O	2.13	0.48
1:R:359:SER:OG	1:R:394:ASN:HB3	2.14	0.48
3:L:137:LEU:CD1	3:L:147:VAL:CG2	2.74	0.48
1:R:360:ASN:N	1:R:360:ASN:OD1	2.46	0.48
3:L:33:LEU:CB	3:L:89:GLN:O	2.62	0.48
1:R:345:THR:O	1:R:345:THR:HG22	2.14	0.48
3:L:50:ALA:O	3:L:51:ALA:HB3	2.14	0.48

*Continued on next page...*



*Continued from previous page...*

Atom-1	Atom-2	Interatomic distance (Å)	Clash overlap (Å)
3:L:168:ASP:CB	3:L:171:ASP:HB2	2.42	0.48
1:R:357:ARG:HB2	1:R:357:ARG:CZ	2.44	0.47
2:H:4:LEU:CD2	2:H:24:ALA:HA	2.43	0.47
3:L:140:PHE:CD1	3:L:140:PHE:C	2.87	0.47
2:H:2:VAL:HG13	2:H:2:VAL:O	2.13	0.47
2:H:48:VAL:HG23	2:H:49:SER:N	2.29	0.47
2:H:205:LYS:N	2:H:206:PRO:CD	2.77	0.47
1:R:342:PHE:CZ	1:R:434:ILE:CD1	2.94	0.47
2:H:143:GLY:HA2	2:H:158:TRP:CH2	2.50	0.47
3:L:4:MET:HE2	3:L:90:GLN:CG	2.45	0.47
2:H:154:VAL:HG23	2:H:204:HIS:HA	1.96	0.47
3:L:31:SER:O	3:L:31:SER:OG	2.25	0.47
1:R:336:CYS:SG	1:R:362:VAL:O	2.73	0.47
1:R:345:THR:HB	1:R:346:ARG:HD3	1.97	0.47
3:L:55:GLN:O	3:L:58:VAL:HB	2.16	0.46
2:H:40:ALA:HB3	2:H:43:LYS:HB2	1.96	0.46
2:H:120:THR:HG23	2:H:151:PRO:HD2	1.96	0.46
2:H:47:TRP:HE1	2:H:50:VAL:HG23	1.79	0.46
1:R:431:GLY:HA2	1:R:515:PHE:HD1	1.81	0.46
3:L:140:PHE:N	3:L:140:PHE:HD1	2.12	0.46
1:R:377:PHE:HE1	1:R:434:ILE:HD11	1.81	0.46
2:H:154:VAL:CG2	2:H:204:HIS:HB2	2.46	0.46
1:R:363:ALA:CB	1:R:365:TYR:CE2	2.99	0.46
1:R:354:ASN:OD1	1:R:355:ARG:N	2.49	0.46
3:L:146:LYS:CB	3:L:198:THR:OG1	2.63	0.46
2:H:40:ALA:HB1	2:H:41:PRO:CD	2.40	0.45
3:L:71:PHE:N	3:L:71:PHE:HD1	2.14	0.45
1:R:417:LYS:HD3	3:L:95:PRO:HD3	1.98	0.45
3:L:143:ARG:NH1	3:L:164:VAL:CG2	2.54	0.45
1:R:480:CYS:O	1:R:483:VAL:HG22	2.16	0.45
2:H:12:ILE:HD12	2:H:13:GLN:H	1.81	0.45
1:R:335:LEU:HD22	1:R:362:VAL:CG1	2.46	0.45
1:R:355:ARG:NH2	1:R:464:PHE:CD1	2.84	0.45
2:H:197:THR:HG21	2:H:214:LYS:NZ	2.32	0.45
3:L:71:PHE:N	3:L:71:PHE:CD1	2.84	0.45
2:H:151:PRO:HD2	2:H:206:PRO:CB	2.42	0.45
2:H:154:VAL:HG22	2:H:203:ASN:C	2.36	0.45
3:L:7:SER:CB	3:L:8:PRO:HD3	2.41	0.45
3:L:28:SER:OG	3:L:68:GLY:O	2.35	0.45
1:R:359:SER:OG	1:R:394:ASN:HB2	2.16	0.45
1:R:417:LYS:O	1:R:422:ASN:ND2	2.49	0.45

*Continued on next page...*

*Continued from previous page...*

Atom-1	Atom-2	Interatomic distance (Å)	Clash overlap (Å)
2:H:100:ALA:CB	3:L:94:THR:HG21	2.45	0.45
3:L:34:ASN:OD1	3:L:34:ASN:N	2.50	0.45
2:H:205:LYS:HE2	2:H:205:LYS:HB2	1.83	0.45
2:H:47:TRP:NE1	2:H:50:VAL:HG23	2.32	0.45
1:R:351:TYR:CG	1:R:352:ALA:N	2.84	0.44
1:R:367:VAL:HG23	1:R:368:LEU:CD1	2.47	0.44
2:H:174:LEU:HD23	2:H:174:LEU:C	2.37	0.44
1:R:342:PHE:CZ	1:R:434:ILE:HD12	2.40	0.44
3:L:166:GLU:OE1	3:L:166:GLU:HA	2.17	0.44
1:R:367:VAL:HG23	1:R:368:LEU:HD12	1.99	0.44
2:H:149:TYR:CD1	2:H:149:TYR:C	2.90	0.44
1:R:453:TYR:CD1	1:R:495:TYR:CE1	3.06	0.44
3:L:3:GLN:H	3:L:26:SER:HB3	1.83	0.44
3:L:140:PHE:CD1	3:L:140:PHE:O	2.70	0.44
1:R:429:PHE:HE1	1:R:464:PHE:HZ	1.66	0.44
1:R:518:LEU:CG	1:R:519:HIS:H	2.28	0.44
3:L:62:PHE:HE1	3:L:75:ILE:HD11	1.82	0.44
3:L:146:LYS:HB2	3:L:198:THR:HG1	1.82	0.44
3:L:152:ASP:OD2	3:L:190:HIS:ND1	2.50	0.44
2:H:199:ILE:HG12	2:H:214:LYS:CA	2.46	0.43
3:L:116:VAL:HG22	3:L:137:LEU:HD23	1.99	0.43
2:H:47:TRP:HE1	2:H:50:VAL:HG22	1.82	0.43
3:L:140:PHE:HD1	3:L:140:PHE:O	2.01	0.43
1:R:403:ARG:CG	1:R:403:ARG:NH1	2.72	0.43
1:R:431:GLY:HA2	1:R:515:PHE:CD1	2.54	0.43
2:H:97:ARG:HH11	2:H:105:ASP:CG	2.22	0.43
3:L:35:TRP:HB3	3:L:73:LEU:HD12	2.01	0.43
3:L:79:GLN:HG3	3:L:80:PRO:HD2	2.00	0.43
2:H:149:TYR:CD1	2:H:149:TYR:O	2.70	0.43
3:L:137:LEU:CD2	3:L:197:VAL:CG2	2.78	0.43
2:H:12:ILE:CG1	2:H:18:LEU:HD21	2.49	0.43
2:H:47:TRP:NE1	2:H:50:VAL:CG2	2.81	0.43
2:H:96:ALA:HB1	2:H:104:ILE:CG2	2.48	0.43
1:R:456:PHE:HZ	2:H:100:ALA:HB3	1.83	0.43
2:H:95:CYS:O	2:H:108:GLY:N	2.48	0.43
3:L:140:PHE:CD1	3:L:174:TYR:O	2.72	0.43
1:R:338:PHE:HE1	1:R:358:ILE:CD1	2.28	0.42
3:L:62:PHE:CE1	3:L:75:ILE:HD11	2.54	0.42
3:L:82:ASP:OD1	3:L:82:ASP:N	2.52	0.42
2:H:111:THR:HG23	2:H:111:THR:O	2.19	0.42
1:R:336:CYS:HB3	1:R:358:ILE:HG21	2.01	0.42

*Continued on next page...*

*Continued from previous page...*

Atom-1	Atom-2	Interatomic distance (Å)	Clash overlap (Å)
2:H:4:LEU:O	2:H:108:GLY:HA2	2.20	0.42
3:L:33:LEU:HD22	3:L:71:PHE:HD2	1.85	0.42
3:L:62:PHE:CE1	3:L:75:ILE:HG12	2.54	0.42
2:H:27:LEU:H	2:H:27:LEU:HG	1.71	0.42
3:L:46:LEU:O	3:L:47:LEU:HD23	2.20	0.42
1:R:350:VAL:HB	1:R:402:ILE:HG22	2.02	0.42
3:L:135:CYS:HB2	3:L:149:TRP:CH2	2.54	0.42
3:L:148:GLN:HB3	3:L:155:LEU:CD1	2.49	0.42
1:R:389:ASP:OD1	1:R:389:ASP:N	2.35	0.42
3:L:73:LEU:HD23	3:L:74:THR:N	2.34	0.42
1:R:490:PHE:HD1	1:R:491:PRO:HD2	1.83	0.41
3:L:19:VAL:HG22	3:L:75:ILE:HB	2.01	0.41
3:L:140:PHE:CD1	3:L:174:TYR:HB2	2.46	0.41
1:R:393:THR:O	1:R:394:ASN:HB3	2.20	0.41
3:L:187:TYR:O	3:L:193:TYR:OH	2.33	0.41
3:L:25:ALA:HB1	3:L:29:ILE:HD12	1.97	0.41
1:R:357:ARG:HB3	1:R:396:TYR:CE1	2.56	0.41
2:H:19:ARG:HE	2:H:19:ARG:HB3	1.48	0.41
3:L:39:LYS:HG2	3:L:84:ALA:HB2	2.01	0.41
3:L:194:ALA:HA	3:L:209:SER:HA	2.03	0.41
1:R:339:GLY:HA2	4:R:601:NAG:C8	2.50	0.41
1:R:451:TYR:C	1:R:452:LEU:HD23	2.41	0.41
3:L:137:LEU:HD12	3:L:176:LEU:CD2	2.47	0.41
1:R:350:VAL:HG13	1:R:351:TYR:N	2.36	0.41
1:R:361:CYS:HB2	1:R:362:VAL:H	1.75	0.41
1:R:406:GLU:OE1	1:R:418:ILE:HD11	2.20	0.40
2:H:12:ILE:HG12	2:H:18:LEU:CD2	2.51	0.40
2:H:167:VAL:HG13	2:H:167:VAL:O	2.21	0.40
3:L:33:LEU:HB2	3:L:90:GLN:HA	2.02	0.40
1:R:416:GLY:O	1:R:420:ASP:HB2	2.21	0.40
1:R:444:LYS:HE2	1:R:448:ASN:HA	2.02	0.40
3:L:30:SER:O	3:L:30:SER:OG	2.31	0.40
3:L:34:ASN:HA	3:L:48:ILE:O	2.21	0.40
1:R:518:LEU:CG	1:R:519:HIS:N	2.84	0.40
3:L:167:GLN:HG2	3:L:174:TYR:CZ	2.56	0.40
1:R:339:GLY:HA2	4:R:601:NAG:H83	2.04	0.40
1:R:485:GLY:O	1:R:488:CYS:N	2.55	0.40
2:H:6:GLU:H	2:H:6:GLU:HG3	1.49	0.40

There are no symmetry-related clashes.

## 5.3 Torsion angles [i](#)

### 5.3.1 Protein backbone [i](#)

In the following table, the Percentiles column shows the percent Ramachandran outliers of the chain as a percentile score with respect to all X-ray entries followed by that with respect to entries of similar resolution.

The Analysed column shows the number of residues for which the backbone conformation was analysed, and the total number of residues.

Mol	Chain	Analysed	Favoured	Allowed	Outliers	Percentiles	
1	R	192/223 (86%)	164 (85%)	26 (14%)	2 (1%)	15	54
2	H	211/222 (95%)	183 (87%)	27 (13%)	1 (0%)	29	67
3	L	212/215 (99%)	190 (90%)	20 (9%)	2 (1%)	17	56
All	All	615/660 (93%)	537 (87%)	73 (12%)	5 (1%)	19	58

All (5) Ramachandran outliers are listed below:

Mol	Chain	Res	Type
1	R	382	VAL
1	R	385	THR
3	L	7	SER
2	H	10	GLY
3	L	69	THR

### 5.3.2 Protein sidechains [i](#)

In the following table, the Percentiles column shows the percent sidechain outliers of the chain as a percentile score with respect to all X-ray entries followed by that with respect to entries of similar resolution.

The Analysed column shows the number of residues for which the sidechain conformation was analysed, and the total number of residues.

Mol	Chain	Analysed	Rotameric	Outliers	Percentiles	
1	R	167/196 (85%)	156 (93%)	11 (7%)	16	50
2	H	177/183 (97%)	155 (88%)	22 (12%)	4	25
3	L	189/190 (100%)	165 (87%)	24 (13%)	4	24
All	All	533/569 (94%)	476 (89%)	57 (11%)	6	32

All (57) residues with a non-rotameric sidechain are listed below:

Mol	Chain	Res	Type
1	R	346	ARG
1	R	357	ARG
1	R	360	ASN
1	R	361	CYS
1	R	385	THR
1	R	386	LYS
1	R	390	LEU
1	R	403	ARG
1	R	440	ASN
1	R	441	LEU
1	R	466	ARG
2	H	6	GLU
2	H	11	LEU
2	H	18	LEU
2	H	19	ARG
2	H	20	LEU
2	H	28	ILE
2	H	31	SER
2	H	38	ARG
2	H	39	GLN
2	H	46	GLU
2	H	59	TYR
2	H	73	ASN
2	H	101	VAL
2	H	109	GLN
2	H	119	SER
2	H	132	SER
2	H	147	LYS
2	H	152	GLU
2	H	154	VAL
2	H	156	VAL
2	H	196	GLN
2	H	201	ASN
3	L	5	THR
3	L	10	SER
3	L	12	SER
3	L	22	THR
3	L	24	ARG
3	L	31	SER
3	L	32	TYR
3	L	33	LEU
3	L	34	ASN
3	L	65	SER

*Continued on next page...*

*Continued from previous page...*

Mol	Chain	Res	Type
3	L	71	PHE
3	L	72	THR
3	L	76	SER
3	L	81	GLU
3	L	82	ASP
3	L	85	THR
3	L	89	GLN
3	L	91	SER
3	L	92	TYR
3	L	136	LEU
3	L	139	ASN
3	L	140	PHE
3	L	146	LYS
3	L	151	VAL

Sometimes sidechains can be flipped to improve hydrogen bonding and reduce clashes. All (3) such sidechains are listed below:

Mol	Chain	Res	Type
1	R	394	ASN
1	R	422	ASN
1	R	439	ASN

### 5.3.3 RNA [i](#)

There are no RNA molecules in this entry.

### 5.4 Non-standard residues in protein, DNA, RNA chains [i](#)

There are no non-standard protein/DNA/RNA residues in this entry.

### 5.5 Carbohydrates [i](#)

There are no monosaccharides in this entry.

### 5.6 Ligand geometry [i](#)

1 ligand is modelled in this entry.

In the following table, the Counts columns list the number of bonds (or angles) for which Mogul statistics could be retrieved, the number of bonds (or angles) that are observed in the model and the number of bonds (or angles) that are defined in the Chemical Component Dictionary. The Link column lists molecule types, if any, to which the group is linked. The Z score for a bond length (or angle) is the number of standard deviations the observed value is removed from the expected value. A bond length (or angle) with  $|Z| > 2$  is considered an outlier worth inspection. RMSZ is the root-mean-square of all Z scores of the bond lengths (or angles).

Mol	Type	Chain	Res	Link	Bond lengths			Bond angles		
					Counts	RMSZ	# Z  > 2	Counts	RMSZ	# Z  > 2
4	NAG	R	601	1	14,14,15	0.55	0	17,19,21	2.60	5 (29%)

In the following table, the Chirals column lists the number of chiral outliers, the number of chiral centers analysed, the number of these observed in the model and the number defined in the Chemical Component Dictionary. Similar counts are reported in the Torsion and Rings columns. '-' means no outliers of that kind were identified.

Mol	Type	Chain	Res	Link	Chirals	Torsions	Rings
4	NAG	R	601	1	-	2/6/23/26	0/1/1/1

There are no bond length outliers.

All (5) bond angle outliers are listed below:

Mol	Chain	Res	Type	Atoms	Z	Observed(°)	Ideal(°)
4	R	601	NAG	O5-C1-C2	-8.06	98.56	111.29
4	R	601	NAG	C1-O5-C5	4.90	118.83	112.19
4	R	601	NAG	C1-C2-N2	2.94	115.51	110.49
4	R	601	NAG	C2-N2-C7	2.35	126.25	122.90
4	R	601	NAG	C4-C3-C2	2.10	114.10	111.02

There are no chirality outliers.

All (2) torsion outliers are listed below:

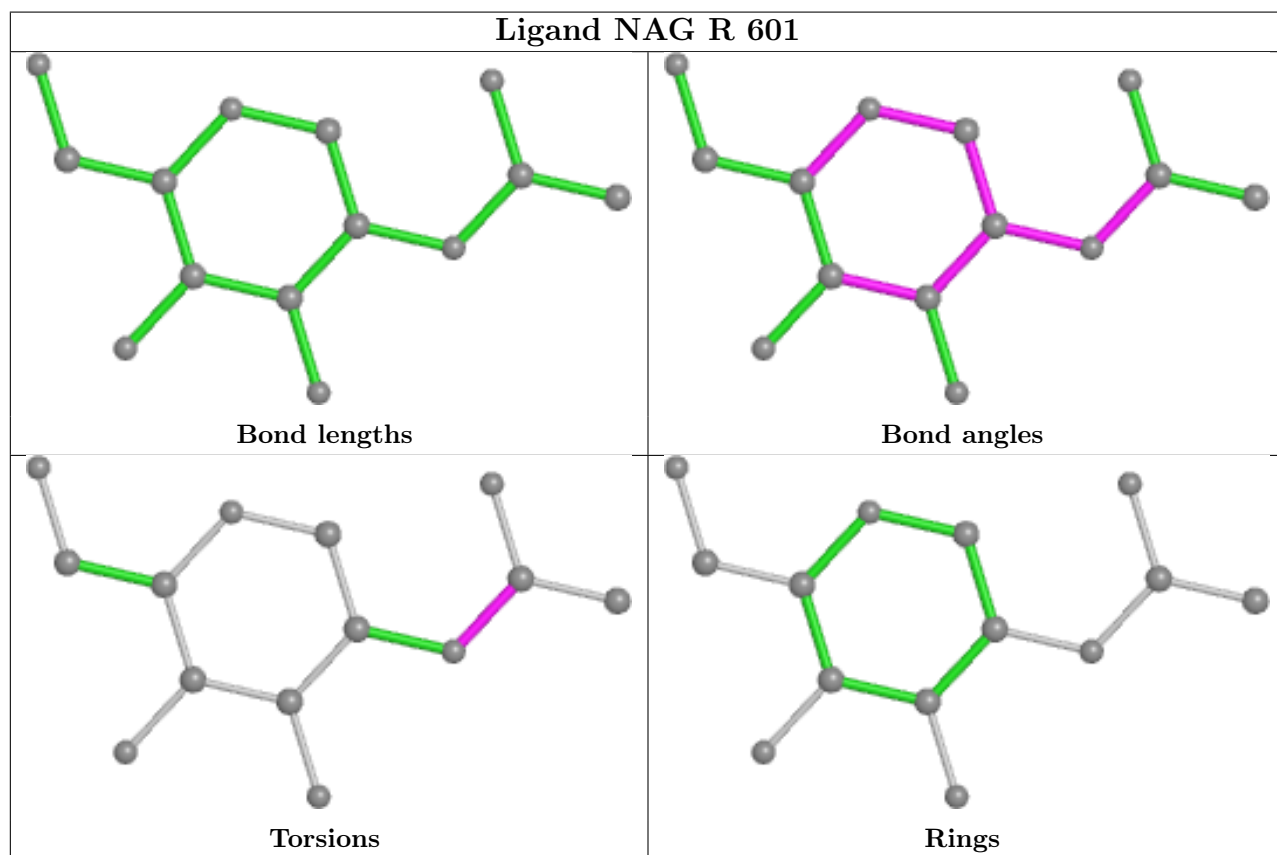
Mol	Chain	Res	Type	Atoms
4	R	601	NAG	C8-C7-N2-C2
4	R	601	NAG	O7-C7-N2-C2

There are no ring outliers.

1 monomer is involved in 2 short contacts:

Mol	Chain	Res	Type	Clashes	Symm-Clashes
4	R	601	NAG	2	0

The following is a two-dimensional graphical depiction of Mogul quality analysis of bond lengths, bond angles, torsion angles, and ring geometry for all instances of the Ligand of Interest. In addition, ligands with molecular weight > 250 and outliers as shown on the validation Tables will also be included. For torsion angles, if less than 5% of the Mogul distribution of torsion angles is within 10 degrees of the torsion angle in question, then that torsion angle is considered an outlier. Any bond that is central to one or more torsion angles identified as an outlier by Mogul will be highlighted in the graph. For rings, the root-mean-square deviation (RMSD) between the ring in question and similar rings identified by Mogul is calculated over all ring torsion angles. If the average RMSD is greater than 60 degrees and the minimal RMSD between the ring in question and any Mogul-identified rings is also greater than 60 degrees, then that ring is considered an outlier. The outliers are highlighted in purple. The color gray indicates Mogul did not find sufficient equivalents in the CSD to analyse the geometry.



## 5.7 Other polymers [\(i\)](#)

There are no such residues in this entry.

## 5.8 Polymer linkage issues [\(i\)](#)

There are no chain breaks in this entry.



## 6 Fit of model and data [i](#)

### 6.1 Protein, DNA and RNA chains [i](#)

In the following table, the column labelled ‘#RSRZ> 2’ contains the number (and percentage) of RSRZ outliers, followed by percent RSRZ outliers for the chain as percentile scores relative to all X-ray entries and entries of similar resolution. The OWAB column contains the minimum, median, 95<sup>th</sup> percentile and maximum values of the occupancy-weighted average B-factor per residue. The column labelled ‘Q< 0.9’ lists the number of (and percentage) of residues with an average occupancy less than 0.9.

Mol	Chain	Analysed	<RSRZ>	#RSRZ>2	OWAB(Å <sup>2</sup> )	Q<0.9
1	R	194/223 (86%)	0.08	1 (0%) 91 84	37, 71, 120, 161	0
2	H	215/222 (96%)	0.24	3 (1%) 75 62	37, 71, 111, 156	0
3	L	214/215 (99%)	0.14	3 (1%) 75 62	38, 65, 98, 126	0
All	All	623/660 (94%)	0.16	7 (1%) 80 68	37, 69, 111, 161	0

All (7) RSRZ outliers are listed below:

Mol	Chain	Res	Type	RSRZ
1	R	334	ASN	3.2
3	L	48	ILE	2.2
3	L	35	TRP	2.2
2	H	203	ASN	2.1
3	L	47	LEU	2.0
2	H	199	ILE	2.0
2	H	67	PHE	2.0

### 6.2 Non-standard residues in protein, DNA, RNA chains [i](#)

There are no non-standard protein/DNA/RNA residues in this entry.

### 6.3 Carbohydrates [i](#)

There are no monosaccharides in this entry.

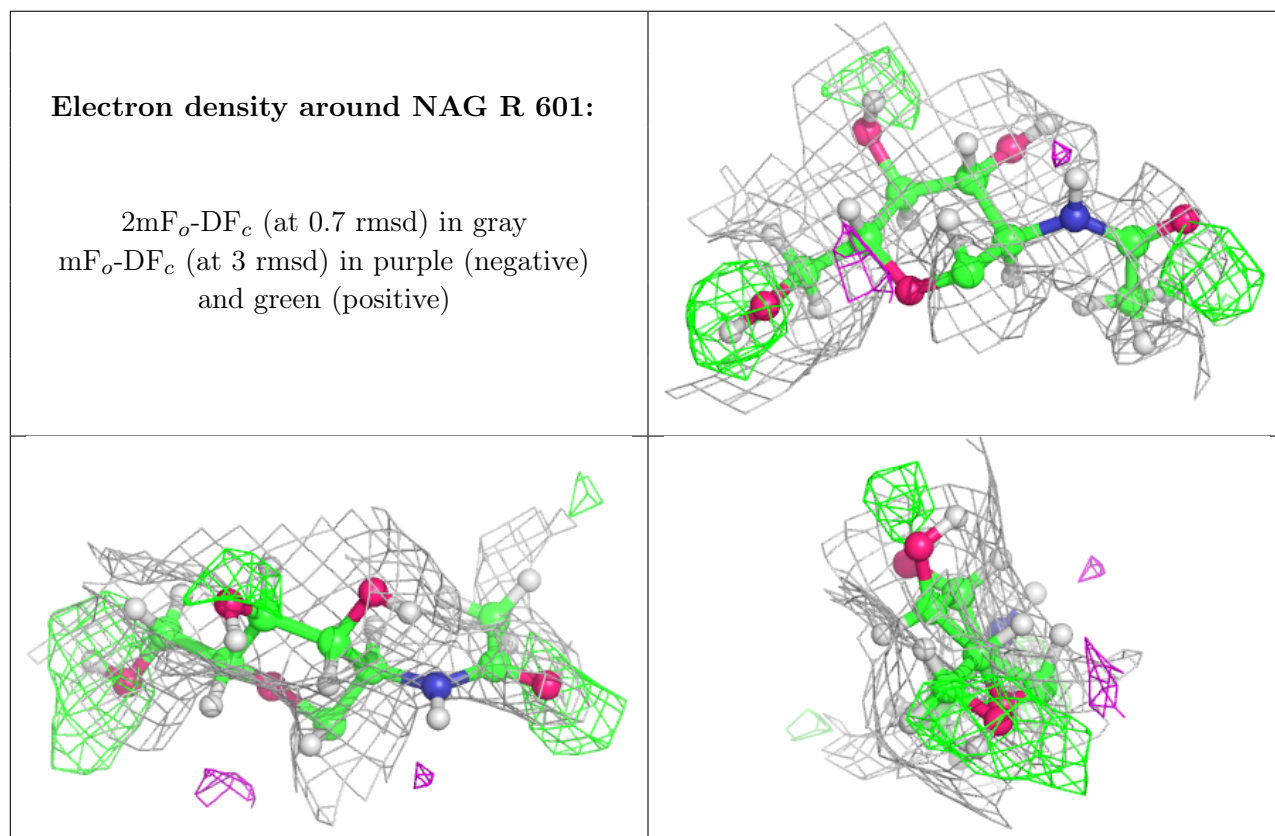
### 6.4 Ligands [i](#)

In the following table, the Atoms column lists the number of modelled atoms in the group and the number defined in the chemical component dictionary. The B-factors column lists the minimum,

median, 95<sup>th</sup> percentile and maximum values of B factors of atoms in the group. The column labelled 'Q < 0.9' lists the number of atoms with occupancy less than 0.9.

Mol	Type	Chain	Res	Atoms	RSCC	RSR	B-factors(Å <sup>2</sup> )	Q<0.9
4	NAG	R	601	14/15	0.20	0.49	79,81,189,189	0

The following is a graphical depiction of the model fit to experimental electron density of all instances of the Ligand of Interest. In addition, ligands with molecular weight > 250 and outliers as shown on the geometry validation Tables will also be included. Each fit is shown from different orientation to approximate a three-dimensional view.



## 6.5 Other polymers [\(i\)](#)

There are no such residues in this entry.