



Full wwPDB EM Validation Report ⓘ

Feb 24, 2024 – 08:55 AM EST

PDB ID : 7K0Y
EMDB ID : EMD-22618
Title : Cryo-EM structure of activated-form DNA-PK (complex VI)
Authors : Chen, X.; Gellert, M.; Yang, W.
Deposited on : 2020-09-06
Resolution : 3.70 Å (reported)

This is a Full wwPDB EM Validation Report for a publicly released PDB entry.

We welcome your comments at validation@mail.wwpdb.org

A user guide is available at

<https://www.wwpdb.org/validation/2017/EMValidationReportHelp>

with specific help available everywhere you see the ⓘ symbol.

The types of validation reports are described at

<http://www.wwpdb.org/validation/2017/FAQs#types>.

The following versions of software and data (see [references ⓘ](#)) were used in the production of this report:

EMDB validation analysis : 0.0.1.dev70
MolProbity : 4.02b-467
Percentile statistics : 20191225.v01 (using entries in the PDB archive December 25th 2019)
MapQ : 1.9.13
Ideal geometry (proteins) : Engh & Huber (2001)
Ideal geometry (DNA, RNA) : Parkinson et al. (1996)
Validation Pipeline (wwPDB-VP) : 2.36

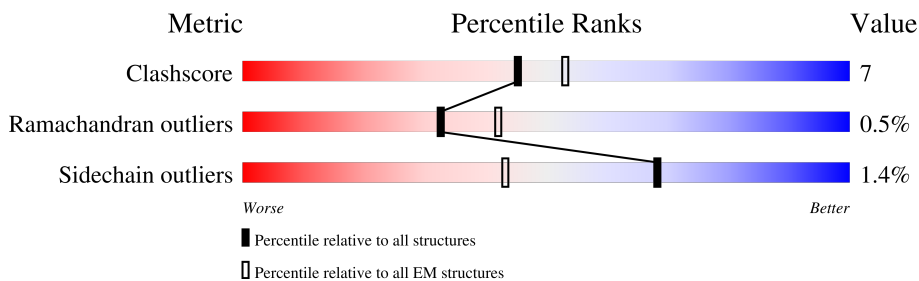
1 Overall quality at a glance

The following experimental techniques were used to determine the structure:

ELECTRON MICROSCOPY

The reported resolution of this entry is 3.70 Å.

Percentile scores (ranging between 0-100) for global validation metrics of the entry are shown in the following graphic. The table shows the number of entries on which the scores are based.



Metric	Whole archive (#Entries)	EM structures (#Entries)
Clashscore	158937	4297
Ramachandran outliers	154571	4023
Sidechain outliers	154315	3826

The table below summarises the geometric issues observed across the polymeric chains and their fit to the map. The red, orange, yellow and green segments of the bar indicate the fraction of residues that contain outliers for ≥ 3 , 2, 1 and 0 types of geometric quality criteria respectively. A grey segment represents the fraction of residues that are not modelled. The numeric value for each fraction is indicated below the corresponding segment, with a dot representing fractions $\leq 5\%$. The upper red bar (where present) indicates the fraction of residues that have poor fit to the EM map (all-atom inclusion $< 40\%$). The numeric value is given above the bar.

Mol	Chain	Length	Quality of chain
1	A	4128	
2	B	609	
3	C	732	
4	D	24	
4	F	24	
5	E	16	
5	G	16	

2 Entry composition [i](#)

There are 5 unique types of molecules in this entry. The entry contains 39835 atoms, of which 0 are hydrogens and 0 are deuteriums.

In the tables below, the AltConf column contains the number of residues with at least one atom in alternate conformation and the Trace column contains the number of residues modelled with at most 2 atoms.

- Molecule 1 is a protein called DNA-dependent protein kinase catalytic subunit.

Mol	Chain	Residues	Atoms					AltConf	Trace
			Total	C	N	O	S		
1	A	3669	29107	18680	4932	5306	189	0	0

- Molecule 2 is a protein called X-ray repair cross-complementing protein 6.

Mol	Chain	Residues	Atoms					AltConf	Trace
			Total	C	N	O	S		
2	B	490	3973	2545	677	733	18	2	0

- Molecule 3 is a protein called X-ray repair cross-complementing protein 5.

Mol	Chain	Residues	Atoms					AltConf	Trace
			Total	C	N	O	S		
3	C	655	5247	3357	876	988	26	0	0

- Molecule 4 is a DNA chain called DNA (5'-D(*GP*CP*AP*TP*GP*CP*TP*CP*TP*AP*CP*TP*GP*CP*TP*TP*CP*GP*AP*TP*AP*TP*CP*G)-3').

Mol	Chain	Residues	Atoms					AltConf	Trace
			Total	C	N	O	P		
4	D	24	484	233	82	146	23	0	0
4	F	21	425	204	69	131	21	0	0

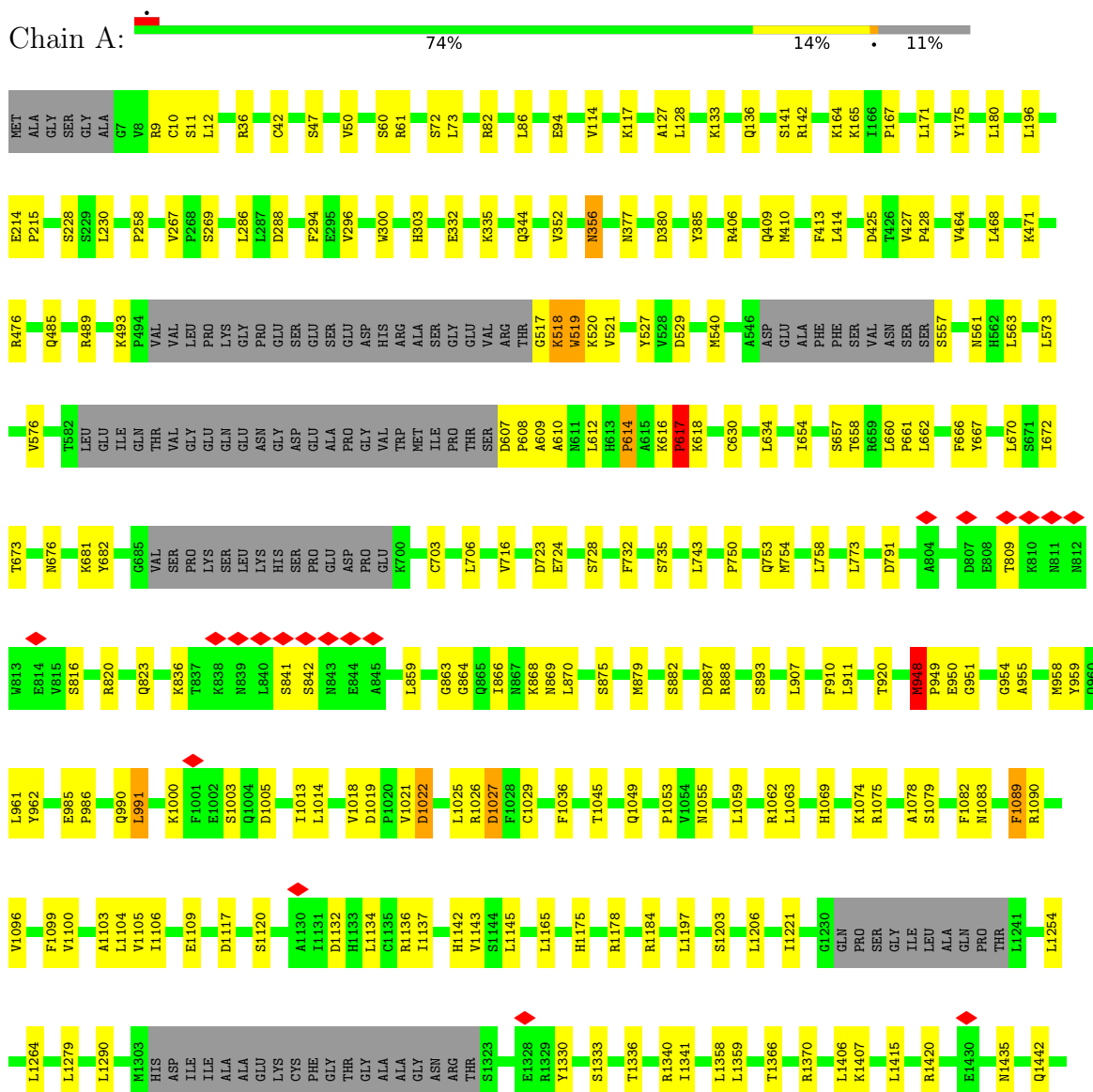
- Molecule 5 is a DNA chain called DNA (5'-D(*AP*AP*GP*CP*AP*GP*TP*AP*GP*AP*GP*CP*A)-3').

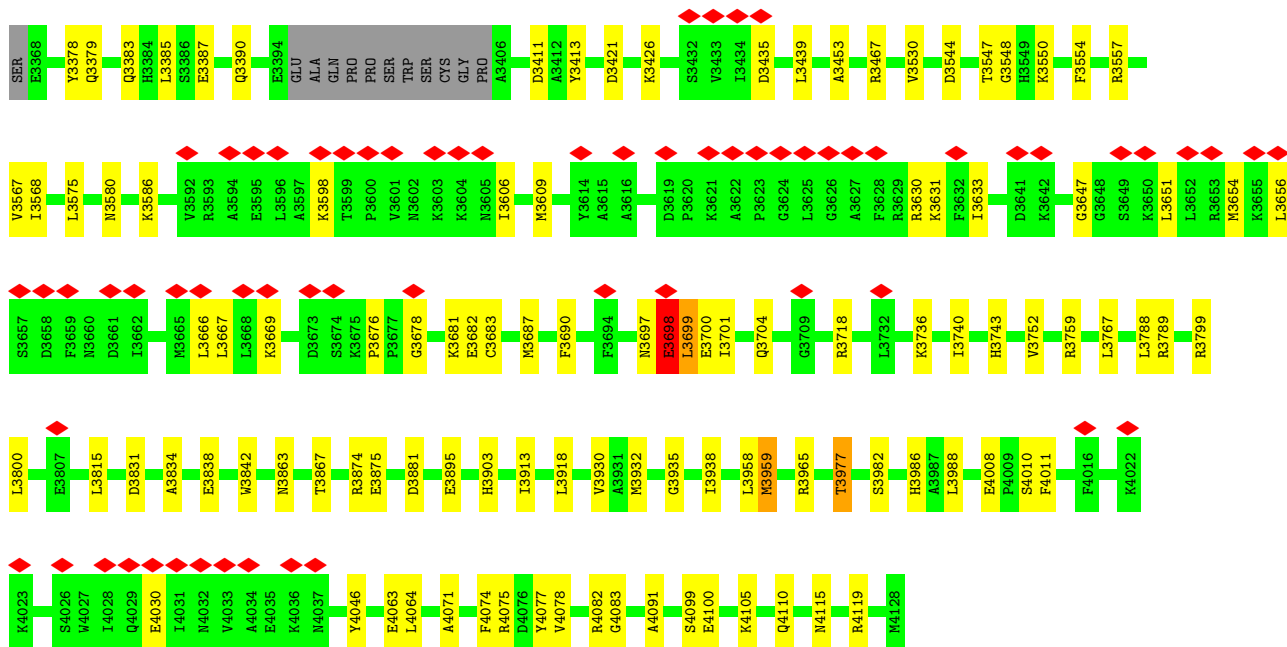
Mol	Chain	Residues	Atoms					AltConf	Trace
			Total	C	N	O	P		
5	E	13	269	128	58	71	12	0	0
5	G	16	330	157	68	90	15	0	0

3 Residue-property plots

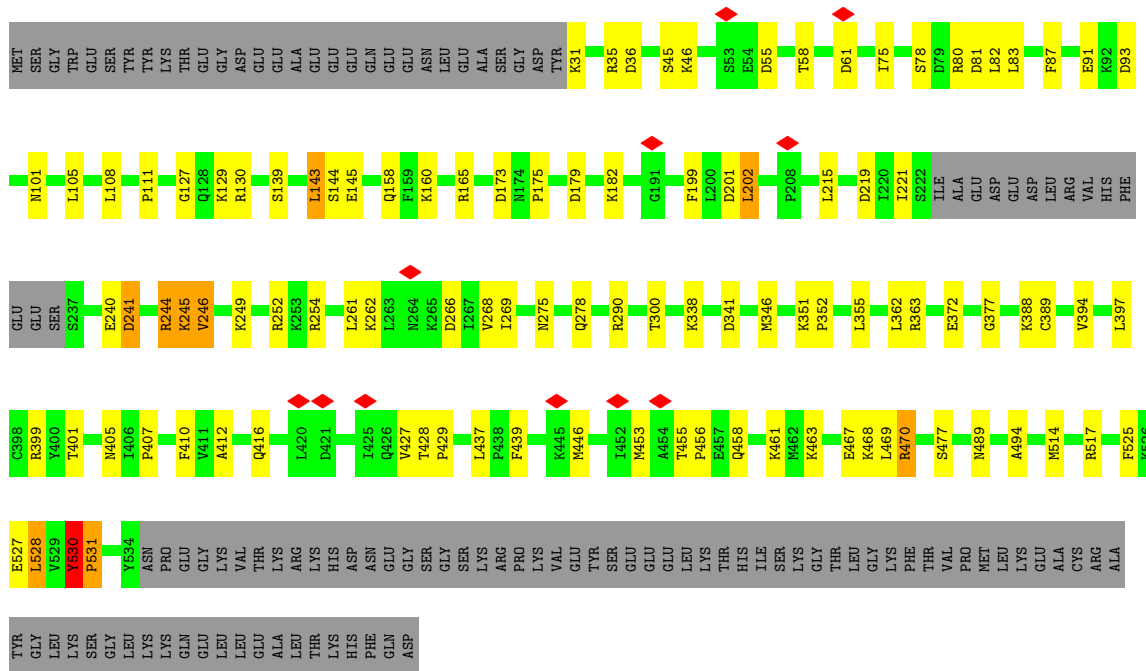
These plots are drawn for all protein, RNA, DNA and oligosaccharide chains in the entry. The first graphic for a chain summarises the proportions of the various outlier classes displayed in the second graphic. The second graphic shows the sequence view annotated by issues in geometry and atom inclusion in map density. Residues are color-coded according to the number of geometric quality criteria for which they contain at least one outlier: green = 0, yellow = 1, orange = 2 and red = 3 or more. A red diamond above a residue indicates a poor fit to the EM map for this residue (all-atom inclusion < 40%). Stretches of 2 or more consecutive residues without any outlier are shown as a green connector. Residues present in the sample, but not in the model, are shown in grey.

- Molecule 1: DNA-dependent protein kinase catalytic subunit

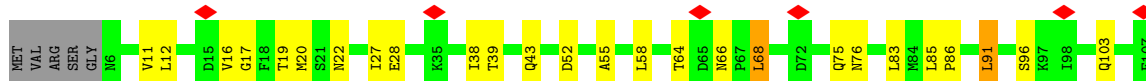
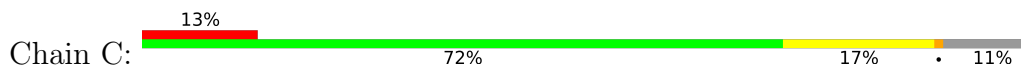


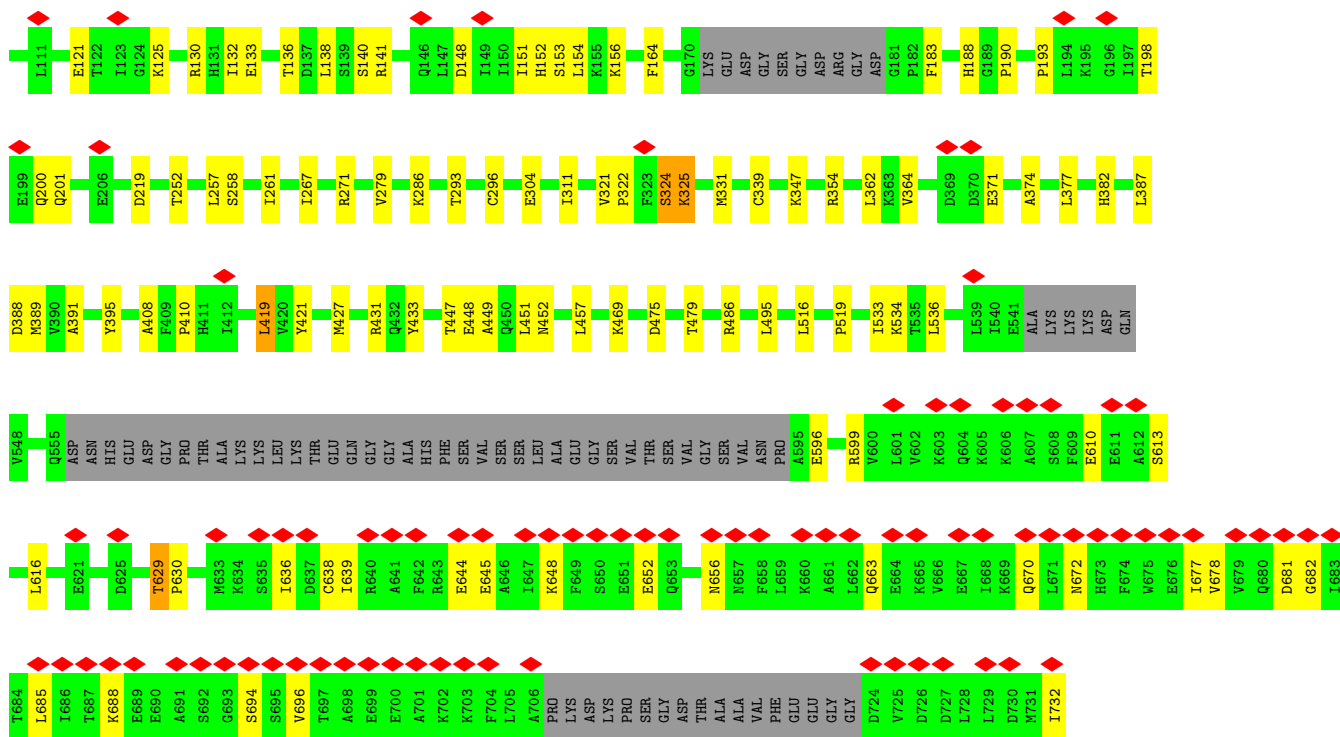


• Molecule 2: X-ray repair cross-complementing protein 6



• Molecule 3: X-ray repair cross-complementing protein 5

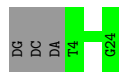
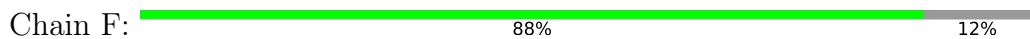




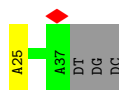
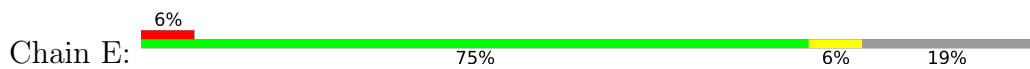
• Molecule 4: DNA (5'-D(*GP*CP*AP*TP*GP*CP*TP*CP*TP*AP*CP*TP*GP*CP*TP*TP*CP*GP*AP*TP*AP*TP*CP*G)-3')



• Molecule 4: DNA (5'-D(*GP*CP*AP*TP*GP*CP*TP*CP*TP*AP*CP*TP*GP*CP*TP*TP*CP*GP*AP*TP*AP*TP*CP*G)-3')



• Molecule 5: DNA (5'-D(*AP*AP*GP*CP*AP*GP*TP*AP*GP*AP*GP*CP*A)-3')



• Molecule 5: DNA (5'-D(*AP*AP*GP*CP*AP*GP*TP*AP*GP*AP*GP*CP*A)-3')



There are no outlier residues recorded for this chain.

4 Experimental information

Property	Value	Source
EM reconstruction method	SINGLE PARTICLE	Depositor
Imposed symmetry	POINT, Not provided	
Number of particles used	254646	Depositor
Resolution determination method	FSC 0.143 CUT-OFF	Depositor
CTF correction method	PHASE FLIPPING AND AMPLITUDE CORRECTION	Depositor
Microscope	FEI TITAN KRIOS	Depositor
Voltage (kV)	300	Depositor
Electron dose ($e^-/\text{\AA}^2$)	45	Depositor
Minimum defocus (nm)	Not provided	
Maximum defocus (nm)	Not provided	
Magnification	Not provided	
Image detector	GATAN K2 SUMMIT (4k x 4k)	Depositor
Maximum map value	0.135	Depositor
Minimum map value	-0.072	Depositor
Average map value	-0.000	Depositor
Map value standard deviation	0.003	Depositor
Recommended contour level	0.012	Depositor
Map size (Å)	408.31998, 408.31998, 408.31998	wwPDB
Map dimensions	352, 352, 352	wwPDB
Map angles (°)	90.0, 90.0, 90.0	wwPDB
Pixel spacing (Å)	1.16, 1.16, 1.16	Depositor

5 Model quality [i](#)

5.1 Standard geometry [i](#)

The Z score for a bond length (or angle) is the number of standard deviations the observed value is removed from the expected value. A bond length (or angle) with $|Z| > 5$ is considered an outlier worth inspection. RMSZ is the root-mean-square of all Z scores of the bond lengths (or angles).

Mol	Chain	Bond lengths		Bond angles	
		RMSZ	# Z >5	RMSZ	# Z >5
1	A	0.45	0/29703	0.65	19/40166 (0.0%)
2	B	0.42	0/4056	0.67	4/5460 (0.1%)
3	C	0.35	0/5347	0.62	3/7208 (0.0%)
4	D	1.04	0/540	1.09	0/831
4	F	0.89	0/473	1.10	0/727
5	E	0.62	0/304	0.84	0/468
5	G	1.03	0/372	0.96	0/573
All	All	0.47	0/40795	0.67	26/55433 (0.0%)

Chiral center outliers are detected by calculating the chiral volume of a chiral center and verifying if the center is modelled as a planar moiety or with the opposite hand. A planarity outlier is detected by checking planarity of atoms in a peptide group, atoms in a mainchain group or atoms of a sidechain that are expected to be planar.

Mol	Chain	#Chirality outliers	#Planarity outliers
1	A	0	1

There are no bond length outliers.

All (26) bond angle outliers are listed below:

Mol	Chain	Res	Type	Atoms	Z	Observed(°)	Ideal(°)
1	A	2578	GLU	C-N-CA	8.90	143.94	121.70
1	A	3895	GLU	CB-CA-C	8.38	127.15	110.40
1	A	1290	LEU	CB-CG-CD2	-6.97	99.15	111.00
2	B	528	LEU	CA-CB-CG	6.83	131.01	115.30
1	A	468	LEU	CA-CB-CG	6.22	129.62	115.30
1	A	2123	PRO	CA-N-CD	-6.18	102.84	111.50
1	A	1959	LEU	CA-CB-CG	6.13	129.40	115.30
1	A	2545	LEU	CA-CB-CG	6.01	129.13	115.30
1	A	991	LEU	CA-CB-CG	5.90	128.88	115.30
1	A	1359	LEU	CA-CB-CG	5.88	128.81	115.30
2	B	202	LEU	CA-CB-CG	5.86	128.77	115.30

Continued on next page...

Continued from previous page...

Mol	Chain	Res	Type	Atoms	Z	Observed(°)	Ideal(°)
2	B	143	LEU	CA-CB-CG	5.66	128.32	115.30
3	C	91	LEU	CA-CB-CG	5.41	127.74	115.30
1	A	662	LEU	CA-CB-CG	5.36	127.62	115.30
1	A	1982	ILE	CG1-CB-CG2	-5.34	99.64	111.40
1	A	1290	LEU	CA-CB-CG	5.34	127.58	115.30
1	A	2528	GLU	C-N-CA	5.34	135.06	121.70
1	A	2573	PRO	CA-N-CD	-5.31	104.07	111.50
1	A	773	LEU	CA-CB-CG	5.30	127.50	115.30
1	A	286	LEU	CA-CB-CG	5.28	127.44	115.30
3	C	419	LEU	CA-CB-CG	5.26	127.39	115.30
1	A	3788	LEU	CA-CB-CG	5.23	127.32	115.30
1	A	42	CYS	CA-CB-SG	5.22	123.39	114.00
3	C	68	LEU	CA-CB-CG	5.21	127.29	115.30
1	A	3666	LEU	CA-CB-CG	5.12	127.07	115.30
2	B	244	ARG	C-N-CA	5.08	134.40	121.70

There are no chirality outliers.

All (1) planarity outliers are listed below:

Mol	Chain	Res	Type	Group
1	A	1727	ARG	Sidechain

5.2 Too-close contacts [i](#)

In the following table, the Non-H and H(model) columns list the number of non-hydrogen atoms and hydrogen atoms in the chain respectively. The H(added) column lists the number of hydrogen atoms added and optimized by MolProbity. The Clashes column lists the number of clashes within the asymmetric unit, whereas Symm-Clashes lists symmetry-related clashes.

Mol	Chain	Non-H	H(model)	H(added)	Clashes	Symm-Clashes
1	A	29107	0	29371	374	0
2	B	3973	0	4075	86	0
3	C	5247	0	5263	86	0
4	D	484	0	274	3	0
4	F	425	0	240	0	0
5	E	269	0	146	2	0
5	G	330	0	180	0	0
All	All	39835	0	39549	532	0

The all-atom clashscore is defined as the number of clashes found per 1000 atoms (including hydrogen atoms). The all-atom clashscore for this structure is 7.

All (532) close contacts within the same asymmetric unit are listed below, sorted by their clash magnitude.

Atom-1	Atom-2	Interatomic distance (Å)	Clash overlap (Å)
2:B:245:LYS:O	2:B:246:VAL:CG2	2.04	1.06
1:A:948:MET:H	1:A:949:PRO:HD2	1.20	1.00
1:A:948:MET:HG3	1:A:949:PRO:HD3	1.40	1.00
1:A:948:MET:H	1:A:949:PRO:CD	1.78	0.96
1:A:630:CYS:O	1:A:634:LEU:HB2	1.69	0.93
2:B:245:LYS:O	2:B:246:VAL:HG23	1.68	0.91
1:A:1771:GLN:O	1:A:1772:HIS:O	1.90	0.90
1:A:3697:ASN:O	1:A:3698:GLU:O	1.89	0.90
3:C:252:THR:HA	3:C:257:LEU:O	1.76	0.85
3:C:19:THR:O	3:C:22:ASN:HB2	1.75	0.84
1:A:607:ASP:HB3	1:A:608:PRO:HD3	1.61	0.83
1:A:949:PRO:HB2	1:A:954:GLY:HA3	1.62	0.81
2:B:245:LYS:O	2:B:246:VAL:HG22	1.77	0.80
1:A:2826:LEU:HD12	1:A:2826:LEU:H	1.45	0.79
1:A:1022:ASP:O	1:A:1026:ARG:HG3	1.83	0.79
1:A:2284:ASP:HB3	1:A:2285:LEU:HD13	1.68	0.75
1:A:948:MET:N	1:A:949:PRO:CD	2.49	0.75
2:B:245:LYS:C	2:B:246:VAL:HG23	2.09	0.73
1:A:2572:TYR:N	1:A:2573:PRO:HD3	2.04	0.72
1:A:607:ASP:HB3	1:A:608:PRO:CD	2.18	0.72
2:B:530:TYR:O	2:B:531:PRO:C	2.23	0.71
3:C:371:GLU:HB2	3:C:374:ALA:HB3	1.72	0.71
2:B:530:TYR:O	2:B:531:PRO:O	2.11	0.69
1:A:1090:ARG:HB2	1:A:1137:ILE:HG12	1.75	0.68
1:A:1825:LEU:O	1:A:1829:TRP:HB2	1.94	0.67
1:A:3530:VAL:HG11	1:A:3568:ILE:HD13	1.78	0.66
1:A:672:ILE:O	1:A:676:ASN:ND2	2.29	0.65
1:A:1833:LEU:HB3	1:A:1836:LEU:HB2	1.80	0.64
1:A:2308:SER:OG	1:A:2348:GLN:NE2	2.31	0.64
1:A:518:LYS:HD2	1:A:518:LYS:N	2.13	0.63
1:A:1892:LYS:HA	1:A:1896:ILE:HD11	1.79	0.63
2:B:202:LEU:HD23	2:B:221:ILE:HD12	1.80	0.63
1:A:3243:ILE:HD13	1:A:3259:LEU:HD22	1.81	0.63
1:A:1333:SER:HA	1:A:1336:THR:HG22	1.82	0.62
1:A:1018:VAL:HG12	1:A:1074:LYS:HA	1.81	0.62
2:B:446:MET:SD	2:B:446:MET:N	2.73	0.62
1:A:754:MET:O	1:A:758:LEU:HB2	2.00	0.62
1:A:951:GLY:HA2	1:A:955:ALA:HB3	1.82	0.62
1:A:3177:ASN:OD1	1:A:3177:ASN:N	2.30	0.62
1:A:612:LEU:HB3	1:A:614:PRO:HD3	1.83	0.61

Continued on next page...

Continued from previous page...

Atom-1	Atom-2	Interatomic distance (Å)	Clash overlap (Å)
1:A:1794:GLN:HA	1:A:1797:LEU:HD12	1.83	0.61
2:B:245:LYS:C	2:B:246:VAL:CG2	2.68	0.61
1:A:864:GLY:HA3	1:A:3169:PRO:HA	1.81	0.61
1:A:1069:HIS:O	1:A:1075:ARG:NH1	2.34	0.61
1:A:521:VAL:O	1:A:521:VAL:HG13	2.02	0.60
1:A:3193:ILE:O	1:A:3197:LEU:HB2	2.01	0.60
3:C:688:LYS:HA	3:C:696:VAL:HB	1.84	0.60
3:C:688:LYS:HB2	3:C:694:SER:HB2	1.83	0.59
1:A:986:PRO:O	1:A:990:GLN:HB2	2.02	0.59
1:A:1022:ASP:OD1	1:A:1025:LEU:HB3	2.03	0.59
1:A:1075:ARG:NH2	1:A:1117:ASP:OD2	2.36	0.59
2:B:241:ASP:OD1	2:B:241:ASP:N	2.36	0.59
1:A:3759:ARG:NH1	1:A:4008:GLU:OE2	2.35	0.59
1:A:1560:TYR:O	1:A:1564:SER:OG	2.20	0.58
2:B:427:VAL:O	3:C:354:ARG:NH2	2.36	0.58
1:A:842:SER:O	1:A:842:SER:OG	2.19	0.58
1:A:3913:ILE:HD11	1:A:3988:LEU:HD22	1.84	0.58
2:B:416:GLN:NE2	2:B:429:PRO:O	2.36	0.58
1:A:2203:THR:HG21	1:A:2247:ASP:HB2	1.85	0.58
1:A:86:LEU:HD13	1:A:127:ALA:HB2	1.86	0.58
2:B:461:LYS:HZ3	2:B:528:LEU:HD13	1.68	0.58
1:A:518:LYS:HD2	1:A:518:LYS:H	1.66	0.58
1:A:716:VAL:HB	1:A:1120:SER:HA	1.86	0.58
1:A:958:MET:HB2	1:A:961:LEU:HD12	1.86	0.58
2:B:458:GLN:HG3	2:B:528:LEU:HD11	1.85	0.57
3:C:76:ASN:ND2	3:C:103:GLN:O	2.37	0.57
3:C:652:GLU:O	3:C:656:ASN:ND2	2.37	0.57
1:A:3435:ASP:O	1:A:3439:LEU:HB2	2.04	0.57
1:A:3379:GLN:OE1	1:A:3383:GLN:NE2	2.38	0.57
2:B:346:MET:SD	2:B:399:ARG:NH2	2.78	0.57
1:A:2826:LEU:HA	1:A:2829:LYS:CG	2.34	0.57
1:A:1013:ILE:HG23	1:A:1029:CYS:HB3	1.87	0.57
1:A:1802:TYR:O	1:A:1806:ARG:HB2	2.05	0.57
1:A:2183:HIS:HA	1:A:2186:VAL:HG22	1.86	0.57
1:A:836:LYS:NZ	4:D:5:DG:OP1	2.37	0.57
1:A:2387:PRO:O	2:B:158:GLN:NE2	2.38	0.57
2:B:82:LEU:HB3	2:B:108:LEU:HD22	1.86	0.57
1:A:4083:GLY:HA3	1:A:4091:ALA:HB2	1.87	0.57
1:A:72:SER:O	1:A:82:ARG:NH1	2.38	0.56
1:A:1894:SER:HA	1:A:1897:ASN:HB2	1.87	0.56
2:B:410:PHE:HB2	2:B:439:PHE:HE1	1.68	0.56

Continued on next page...

Continued from previous page...

Atom-1	Atom-2	Interatomic distance (Å)	Clash overlap (Å)
1:A:2506:LEU:O	1:A:2525:TRP:NE1	2.33	0.56
1:A:612:LEU:HD22	1:A:614:PRO:HG3	1.86	0.56
2:B:530:TYR:C	2:B:531:PRO:O	2.42	0.56
3:C:198:THR:HG22	3:C:201:GLN:HE21	1.68	0.56
1:A:493:LYS:NZ	1:A:527:TYR:OH	2.30	0.56
1:A:1178:ARG:O	1:A:1184:ARG:NH2	2.39	0.56
3:C:16:VAL:HG11	3:C:58:LEU:HD13	1.86	0.56
1:A:667:TYR:HA	1:A:670:LEU:HD12	1.87	0.56
1:A:2952:ILE:HG12	1:A:2975:ALA:HB2	1.87	0.56
1:A:4071:ALA:HB3	1:A:4074:PHE:HB2	1.87	0.56
1:A:573:LEU:HA	1:A:576:VAL:HG12	1.87	0.56
1:A:907:LEU:HD13	1:A:910:PHE:HD2	1.70	0.56
1:A:1726:SER:O	1:A:1727:ARG:HG3	2.06	0.56
1:A:2124:SER:O	1:A:2128:PHE:HB3	2.05	0.56
2:B:407:PRO:HG2	3:C:486:ARG:HD2	1.88	0.56
1:A:1613:HIS:HA	1:A:1616:LEU:HD12	1.88	0.56
1:A:136:GLN:HG3	1:A:180:LEU:HD21	1.87	0.56
1:A:866:ILE:O	1:A:869:ASN:ND2	2.35	0.55
2:B:527:GLU:HA	2:B:531:PRO:HD3	1.88	0.55
1:A:1957:ASN:ND2	1:A:1962:TYR:OH	2.40	0.55
1:A:1568:ASN:ND2	1:A:1599:GLY:O	2.40	0.55
1:A:1750:LEU:HG	1:A:1785:ILE:HD11	1.88	0.55
1:A:1805:PHE:O	1:A:1816:ARG:NH2	2.33	0.55
1:A:1264:LEU:HD21	1:A:1341:ILE:HG13	1.88	0.55
1:A:1937:ARG:O	1:A:1941:HIS:ND1	2.39	0.55
1:A:561:ASN:N	1:A:561:ASN:OD1	2.40	0.55
1:A:1909:ASN:HD22	3:C:732:ILE:HG23	1.72	0.55
1:A:3294:SER:HB3	1:A:3348:LEU:HD22	1.88	0.55
3:C:141:ARG:NH1	3:C:200:GLN:OE1	2.40	0.55
3:C:64:THR:OG1	3:C:75:GLN:NE2	2.40	0.55
1:A:2285:LEU:H	1:A:2285:LEU:CD1	2.21	0.54
1:A:3630:ARG:HG3	1:A:3633:ILE:H	1.72	0.54
1:A:1063:LEU:HD22	1:A:1078:ALA:HA	1.89	0.54
1:A:3244:ASP:OD1	1:A:3247:ARG:NH2	2.38	0.54
2:B:528:LEU:HD21	2:B:530:TYR:OH	2.06	0.54
1:A:2131:GLY:O	1:A:2135:ASN:ND2	2.40	0.54
3:C:140:SER:O	3:C:200:GLN:NE2	2.38	0.54
1:A:529:ASP:OD1	1:A:529:ASP:N	2.35	0.54
1:A:723:ASP:OD1	1:A:723:ASP:N	2.38	0.54
3:C:324:SER:OG	3:C:325:LYS:N	2.39	0.54
1:A:2362:VAL:O	1:A:2366:LYS:NZ	2.41	0.54

Continued on next page...

Continued from previous page...

Atom-1	Atom-2	Interatomic distance (Å)	Clash overlap (Å)
1:A:1142:HIS:HE1	1:A:1165:LEU:HD22	1.72	0.54
1:A:3631:LYS:HG2	1:A:3683:CYS:HA	1.90	0.54
1:A:94:GLU:OE1	1:A:133:LYS:NZ	2.38	0.54
1:A:1082:PHE:HZ	1:A:1134:LEU:HD13	1.73	0.54
1:A:3982:SER:O	1:A:3986:HIS:ND1	2.41	0.54
2:B:143:LEU:O	2:B:145:GLU:N	2.41	0.54
1:A:332:GLU:O	1:A:335:LYS:NZ	2.39	0.53
3:C:11:VAL:HB	3:C:132:ILE:HG12	1.91	0.53
3:C:448:GLU:O	3:C:452:ASN:ND2	2.42	0.53
1:A:1829:TRP:O	1:A:1883:ARG:NH2	2.42	0.53
1:A:1862:THR:OG1	1:A:1866:GLN:NE2	2.42	0.53
2:B:91:GLU:O	2:B:101:ASN:ND2	2.41	0.53
1:A:1809:ASP:OD2	1:A:1811:ARG:NH2	2.42	0.53
2:B:338:LYS:O	2:B:405:ASN:ND2	2.41	0.53
1:A:2826:LEU:HD12	1:A:2826:LEU:N	2.18	0.53
1:A:3137:GLU:OE1	1:A:3164:TRP:NE1	2.42	0.53
1:A:3235:LYS:HA	1:A:3238:MET:HE2	1.91	0.53
1:A:2129:LEU:O	1:A:2133:LEU:N	2.42	0.53
1:A:3651:LEU:HA	1:A:3654:MET:HB2	1.91	0.53
1:A:3842:TRP:HH2	1:A:3867:THR:HG22	1.73	0.53
1:A:3091:LEU:O	1:A:3192:LYS:NZ	2.42	0.53
2:B:127:GLY:HA2	2:B:130:ARG:HE	1.73	0.53
1:A:949:PRO:HB2	1:A:954:GLY:CA	2.37	0.53
2:B:412:ALA:HB2	2:B:437:LEU:HD11	1.91	0.53
1:A:1049:GLN:NE2	1:A:1055:ASN:OD1	2.42	0.53
1:A:3690:PHE:HZ	1:A:3699:LEU:HD11	1.74	0.53
1:A:859:LEU:HD11	1:A:870:LEU:HD11	1.90	0.53
1:A:3278:GLN:HE21	1:A:3326:GLN:HE21	1.57	0.52
3:C:616:LEU:HD21	3:C:638:CYS:HB3	1.89	0.52
1:A:3170:ASP:N	1:A:3170:ASP:OD1	2.42	0.52
1:A:3654:MET:HG3	1:A:3656:LEU:HB2	1.92	0.52
1:A:4115:ASN:OD1	1:A:4119:ARG:NH1	2.42	0.52
1:A:703:CYS:HA	1:A:706:LEU:HD13	1.90	0.52
1:A:750:PRO:HA	1:A:753:GLN:HG2	1.91	0.52
1:A:859:LEU:HD21	1:A:870:LEU:HD21	1.90	0.52
1:A:1727:ARG:HD2	1:A:1727:ARG:O	2.10	0.52
1:A:3701:ILE:HG23	1:A:3704:GLN:HE22	1.73	0.52
1:A:2849:SER:O	1:A:2849:SER:OG	2.27	0.52
2:B:468:LYS:HD2	2:B:517:ARG:HG3	1.91	0.52
1:A:1254:LEU:HD21	1:A:1330:TYR:HB2	1.92	0.52
1:A:2234:ASN:HA	1:A:2237:ILE:HD12	1.92	0.52

Continued on next page...

Continued from previous page...

Atom-1	Atom-2	Interatomic distance (Å)	Clash overlap (Å)
3:C:188:HIS:HB2	3:C:519:PRO:HD3	1.91	0.52
2:B:143:LEU:HD23	2:B:182:LYS:HG2	1.91	0.51
3:C:121:GLU:O	3:C:125:LYS:NZ	2.36	0.51
3:C:136:THR:HG22	3:C:138:LEU:H	1.74	0.51
2:B:261:LEU:HD23	2:B:269:ILE:HD11	1.92	0.51
3:C:11:VAL:HG22	3:C:55:ALA:HB3	1.92	0.51
1:A:3130:GLN:NE2	1:A:3174:ASP:OD1	2.41	0.51
1:A:2471:GLU:O	1:A:2475:ASN:HB2	2.11	0.51
1:A:1896:ILE:HD12	1:A:1906:THR:HG23	1.91	0.51
1:A:3411:ASP:OD1	1:A:3411:ASP:N	2.42	0.51
1:A:3958:LEU:O	1:A:4110:GLN:NE2	2.42	0.51
2:B:35:ARG:NH2	2:B:80:ARG:O	2.44	0.51
3:C:339:CYS:O	3:C:395:TYR:HA	2.10	0.51
1:A:2940:ARG:HH12	1:A:3977:THR:HG22	1.74	0.51
1:A:3226:ASP:OD1	1:A:3226:ASP:N	2.44	0.51
1:A:959:TYR:HA	1:A:962:TYR:HB2	1.93	0.51
1:A:1833:LEU:HG	1:A:1835:ALA:H	1.76	0.51
1:A:3155:VAL:HG23	1:A:3156:PRO:HD3	1.93	0.51
1:A:1459:HIS:HB2	1:A:1464:LEU:HD22	1.93	0.51
1:A:2412:TYR:OH	1:A:2453:GLU:OE2	2.28	0.51
3:C:17:GLY:O	3:C:20:MET:HB3	2.10	0.51
1:A:517:GLY:O	1:A:519:TRP:CE3	2.65	0.51
1:A:3838:GLU:OE1	1:A:3874:ARG:NE	2.38	0.51
3:C:91:LEU:HD21	3:C:495:LEU:HD13	1.91	0.51
1:A:3903:HIS:ND1	1:A:3935:GLY:O	2.41	0.50
1:A:4010:SER:OG	1:A:4011:PHE:N	2.44	0.50
3:C:183:PHE:HB2	3:C:190:PRO:HG2	1.93	0.50
1:A:2461:PHE:HB2	1:A:2473:MET:HG3	1.93	0.50
1:A:3580:ASN:HD21	1:A:3676:PRO:HB3	1.75	0.50
3:C:448:GLU:HA	3:C:451:LEU:HB2	1.93	0.50
3:C:533:ILE:HA	3:C:536:LEU:HG	1.93	0.50
3:C:670:GLN:OE1	3:C:672:ASN:ND2	2.45	0.50
1:A:1420:ARG:NH1	1:A:1466:ASN:O	2.44	0.50
1:A:3113:ASN:O	1:A:3116:SER:OG	2.29	0.50
1:A:3269:ARG:HH21	1:A:3271:ASP:HB2	1.77	0.50
1:A:2103:HIS:O	1:A:2107:SER:OG	2.28	0.50
1:A:2285:LEU:CD1	1:A:2285:LEU:N	2.74	0.50
1:A:3421:ASP:OD1	1:A:3467:ARG:NE	2.38	0.50
2:B:175:PRO:O	2:B:182:LYS:NZ	2.44	0.50
1:A:1963:GLN:HA	1:A:1967:PHE:HD2	1.76	0.50
1:A:3586:LYS:HE2	1:A:3667:LEU:HD13	1.94	0.50

Continued on next page...

Continued from previous page...

Atom-1	Atom-2	Interatomic distance (Å)	Clash overlap (Å)
1:A:3863:ASN:OD1	1:A:3863:ASN:N	2.41	0.50
2:B:427:VAL:HG23	2:B:428:THR:HG23	1.94	0.50
1:A:1132:ASP:O	1:A:1136:ARG:NH1	2.45	0.49
1:A:1027:ASP:OD1	1:A:1027:ASP:N	2.44	0.49
1:A:1726:SER:N	1:A:1728:GLU:OE2	2.29	0.49
1:A:36:ARG:NH2	1:A:823:GLN:O	2.45	0.49
1:A:1014:LEU:O	1:A:1018:VAL:HG22	2.13	0.49
1:A:2575:PRO:HD2	1:A:2786:LYS:HA	1.93	0.49
2:B:83:LEU:HD12	2:B:111:PRO:HD3	1.94	0.49
1:A:1949:ILE:HD13	1:A:2096:PRO:HB2	1.94	0.49
1:A:3698:GLU:OE2	1:A:3698:GLU:HA	2.12	0.49
2:B:266:ASP:OD2	3:C:534:LYS:NZ	2.45	0.49
1:A:1003:SER:OG	1:A:1005:ASP:OD1	2.24	0.49
1:A:875:SER:O	1:A:875:SER:OG	2.30	0.49
1:A:1493:PRO:HB3	1:A:1501:PRO:HD3	1.94	0.49
1:A:2103:HIS:O	1:A:2107:SER:CB	2.61	0.49
2:B:300:THR:HB	3:C:293:THR:HG23	1.93	0.49
3:C:219:ASP:OD1	3:C:219:ASP:N	2.46	0.49
3:C:645:GLU:HA	3:C:648:LYS:HZ2	1.78	0.49
1:A:3104:GLN:OE1	1:A:3139:GLN:NE2	2.40	0.49
2:B:165:ARG:HA	2:B:199:PHE:O	2.13	0.49
4:D:24:DG:H2'	5:E:25:DA:N7	2.27	0.49
1:A:60:SER:OG	1:A:61:ARG:N	2.46	0.49
3:C:387:LEU:HB2	3:C:389:MET:HG2	1.94	0.49
3:C:636:ILE:HA	3:C:639:ILE:HG22	1.94	0.49
1:A:950:GLU:H	1:A:954:GLY:HA3	1.77	0.48
1:A:1771:GLN:C	1:A:1772:HIS:O	2.47	0.48
1:A:2810:SER:OG	1:A:2857:CYS:SG	2.70	0.48
1:A:2826:LEU:HA	1:A:2829:LYS:HG2	1.94	0.48
1:A:2133:LEU:HD23	1:A:2164:TRP:HZ3	1.78	0.48
3:C:677:ILE:O	3:C:681:ASP:HB2	2.13	0.48
1:A:228:SER:O	1:A:228:SER:OG	2.28	0.48
1:A:425:ASP:OD1	1:A:425:ASP:N	2.41	0.48
1:A:2527:HIS:ND1	1:A:2528:GLU:O	2.46	0.48
1:A:2786:LYS:O	1:A:2789:SER:OG	2.29	0.48
2:B:489:ASN:ND2	3:C:331:MET:O	2.45	0.48
1:A:887:ASP:OD1	1:A:887:ASP:N	2.46	0.48
1:A:3048:LYS:NZ	1:A:3060:SER:OG	2.47	0.48
3:C:629:THR:HG23	3:C:630:PRO:HD3	1.96	0.48
1:A:518:LYS:N	1:A:518:LYS:CD	2.73	0.48
2:B:362:LEU:HD12	2:B:363:ARG:HB2	1.96	0.48

Continued on next page...

Continued from previous page...

Atom-1	Atom-2	Interatomic distance (Å)	Clash overlap (Å)
1:A:294:PHE:HE2	1:A:344:GLN:HG2	1.79	0.48
3:C:85:LEU:HD12	3:C:86:PRO:HD2	1.94	0.48
1:A:288:ASP:OD1	1:A:288:ASP:N	2.47	0.48
1:A:517:GLY:O	1:A:519:TRP:HE3	1.96	0.48
1:A:657:SER:HA	1:A:660:LEU:HB2	1.96	0.48
1:A:1442:GLN:O	1:A:1446:SER:CB	2.61	0.48
1:A:1079:SER:O	1:A:1083:ASN:ND2	2.36	0.48
1:A:1753:SER:O	1:A:1753:SER:OG	2.29	0.48
2:B:78:SER:OG	2:B:81:ASP:OD2	2.23	0.48
2:B:351:LYS:HB3	2:B:355:LEU:HD21	1.96	0.48
3:C:11:VAL:HA	3:C:55:ALA:O	2.13	0.48
3:C:678:VAL:O	3:C:682:GLY:N	2.37	0.48
1:A:3767:LEU:HD13	1:A:3918:LEU:HD22	1.95	0.48
2:B:372:GLU:OE2	2:B:377:GLY:N	2.46	0.48
1:A:414:LEU:HD12	1:A:464:VAL:HG21	1.96	0.47
1:A:2180:GLU:OE2	1:A:2183:HIS:ND1	2.37	0.47
1:A:2190:VAL:HA	1:A:2193:ILE:HG22	1.96	0.47
2:B:266:ASP:OD1	2:B:266:ASP:N	2.46	0.47
3:C:279:VAL:HG12	3:C:286:LYS:HA	1.96	0.47
1:A:1949:ILE:HG21	1:A:2096:PRO:HB2	1.96	0.47
1:A:4099:SER:OG	1:A:4100:GLU:N	2.46	0.47
2:B:58:THR:HG23	2:B:61:ASP:H	1.79	0.47
1:A:1488:TYR:OH	1:A:1534:ASN:ND2	2.47	0.47
1:A:1896:ILE:HD13	1:A:1908:GLY:HA2	1.96	0.47
1:A:2426:HIS:CD2	1:A:2427:ARG:H	2.32	0.47
1:A:2571:ASP:C	1:A:2573:PRO:HD3	2.34	0.47
1:A:3308:ASP:OD1	1:A:3308:ASP:N	2.44	0.47
1:A:1053:PRO:O	1:A:1062:ARG:NH2	2.47	0.47
1:A:1203:SER:HB3	1:A:1206:LEU:HD12	1.95	0.47
1:A:2122:LEU:HA	1:A:2123:PRO:HD2	1.59	0.47
2:B:477:SER:O	2:B:477:SER:OG	2.31	0.47
1:A:9:ARG:HA	1:A:12:LEU:HB2	1.95	0.47
1:A:948:MET:HG3	1:A:949:PRO:CD	2.28	0.47
1:A:2122:LEU:HA	1:A:2122:LEU:HD23	1.79	0.47
1:A:3018:SER:O	1:A:3018:SER:OG	2.31	0.47
1:A:3554:PHE:HD1	1:A:3557:ARG:HH21	1.60	0.47
3:C:52:ASP:N	3:C:52:ASP:OD1	2.48	0.47
1:A:1952:ILE:HA	1:A:1955:VAL:HG22	1.95	0.47
1:A:2826:LEU:H	1:A:2826:LEU:CD1	2.21	0.47
1:A:1175:HIS:HB3	1:A:1178:ARG:HD2	1.96	0.47
1:A:1407:LYS:HD3	1:A:1463:LEU:HD23	1.97	0.47

Continued on next page...

Continued from previous page...

Atom-1	Atom-2	Interatomic distance (Å)	Clash overlap (Å)
1:A:2788:SER:O	1:A:2792:THR:OG1	2.23	0.47
3:C:12:LEU:HD23	3:C:133:GLU:HB2	1.97	0.47
3:C:151:ILE:HD13	3:C:154:LEU:HD12	1.97	0.47
3:C:447:THR:HG22	3:C:449:ALA:H	1.80	0.47
1:A:1018:VAL:HG11	1:A:1074:LYS:HD3	1.97	0.46
1:A:1470:SER:OG	1:A:1471:GLN:N	2.48	0.46
1:A:3296:GLN:HA	1:A:3299:THR:HG22	1.97	0.46
2:B:93:ASP:N	2:B:93:ASP:OD1	2.48	0.46
1:A:863:GLY:HA2	1:A:3167:ARG:HG3	1.96	0.46
1:A:2197:THR:OG1	1:A:2198:GLY:N	2.48	0.46
1:A:2290:PRO:HD3	1:A:2296:SER:HB3	1.96	0.46
2:B:31:LYS:HG3	2:B:160:LYS:HZ2	1.80	0.46
2:B:215:LEU:HD23	2:B:215:LEU:HA	1.84	0.46
1:A:1055:ASN:O	1:A:1059:LEU:N	2.37	0.46
1:A:2150:VAL:HG13	1:A:2157:PHE:HD2	1.80	0.46
1:A:3875:GLU:O	1:A:3965:ARG:NH2	2.47	0.46
1:A:3881:ASP:OD1	1:A:3881:ASP:N	2.49	0.46
3:C:75:GLN:NE2	3:C:76:ASN:OD1	2.45	0.46
3:C:296:CYS:HA	3:C:304:GLU:HA	1.98	0.46
1:A:608:PRO:O	1:A:610:ALA:N	2.49	0.46
3:C:96:SER:O	3:C:96:SER:OG	2.32	0.46
1:A:2980:ASP:N	1:A:2980:ASP:OD1	2.42	0.46
2:B:275:ASN:O	3:C:431:ARG:NH2	2.48	0.46
1:A:1730:PRO:HG2	1:A:1733:THR:HG21	1.97	0.46
1:A:3647:GLY:HA2	1:A:3651:LEU:HD13	1.97	0.46
1:A:2931:ARG:NH2	1:A:3000:ASP:OD2	2.49	0.46
1:A:165:LYS:HD2	1:A:165:LYS:HA	1.72	0.46
1:A:2285:LEU:HD13	1:A:2285:LEU:H	1.81	0.46
1:A:2919:ASP:OD2	1:A:2922:ARG:NH1	2.49	0.46
1:A:2973:ASP:HA	1:A:2976:LEU:HB2	1.98	0.46
2:B:528:LEU:HD21	2:B:530:TYR:CZ	2.50	0.46
3:C:153:SER:HA	3:C:156:LYS:HG2	1.97	0.46
2:B:399:ARG:NH1	3:C:516:LEU:O	2.43	0.46
3:C:133:GLU:HB3	3:C:164:PHE:HE2	1.80	0.46
3:C:364:VAL:HG13	3:C:419:LEU:HB3	1.98	0.46
2:B:241:ASP:HA	2:B:245:LYS:HG3	1.97	0.46
1:A:2514:ASN:ND2	1:A:2515:PRO:O	2.49	0.45
1:A:2155:GLU:HG2	1:A:2156:VAL:HG13	1.98	0.45
3:C:431:ARG:HD2	3:C:433:TYR:HE2	1.80	0.45
1:A:300:TRP:HD1	1:A:303:HIS:HD2	1.63	0.45
1:A:141:SER:OG	1:A:142:ARG:N	2.49	0.45

Continued on next page...

Continued from previous page...

Atom-1	Atom-2	Interatomic distance (Å)	Clash overlap (Å)
1:A:1143:VAL:HG22	1:A:1197:LEU:HD21	1.98	0.45
1:A:3800:LEU:HD12	1:A:3800:LEU:HA	1.79	0.45
2:B:341:ASP:HB3	2:B:401:THR:HG21	1.99	0.45
3:C:325:LYS:HE3	3:C:325:LYS:HB2	1.54	0.45
1:A:1104:LEU:HD12	1:A:1134:LEU:HD23	1.99	0.45
1:A:1690:GLY:HA2	1:A:1693:VAL:HG12	1.98	0.45
1:A:258:PRO:HD3	1:A:296:VAL:HG11	1.99	0.45
1:A:300:TRP:CD1	1:A:303:HIS:HD2	2.35	0.45
1:A:1458:LEU:HD13	1:A:1467:ILE:HD12	1.98	0.45
1:A:2551:GLU:OE2	1:A:2849:SER:OG	2.34	0.45
1:A:3718:ARG:H	1:A:3743:HIS:HD2	1.63	0.45
2:B:262:LYS:HB3	2:B:268:VAL:HG12	1.99	0.45
2:B:453:MET:SD	3:C:382:HIS:NE2	2.90	0.45
2:B:530:TYR:CD1	2:B:530:TYR:N	2.84	0.45
1:A:377:ASN:ND2	1:A:380:ASP:OD2	2.49	0.45
1:A:3606:ILE:HA	1:A:3609:MET:HG2	1.98	0.45
1:A:72:SER:O	1:A:72:SER:OG	2.31	0.45
1:A:406:ARG:HG2	1:A:409:GLN:HE22	1.80	0.45
1:A:732:PHE:O	1:A:735:SER:OG	2.29	0.45
1:A:893:SER:O	1:A:893:SER:OG	2.34	0.45
1:A:1366:THR:O	1:A:1366:THR:OG1	2.29	0.45
1:A:1525:CYS:SG	1:A:1574:ASN:ND2	2.87	0.45
1:A:1801:VAL:HA	1:A:1804:MET:HG2	1.97	0.45
2:B:494:ALA:HB2	3:C:321:VAL:HG11	1.98	0.45
3:C:362:LEU:HB3	3:C:421:TYR:HB3	1.99	0.45
1:A:3547:THR:HA	1:A:3550:LYS:HE3	1.98	0.45
1:A:3959:MET:SD	1:A:3959:MET:N	2.79	0.45
1:A:888:ARG:NH1	1:A:3932:MET:O	2.50	0.44
1:A:4105:LYS:HE3	1:A:4105:LYS:HB2	1.83	0.44
2:B:55:ASP:OD1	2:B:55:ASP:N	2.50	0.44
1:A:754:MET:SD	1:A:1021:VAL:HG13	2.57	0.44
1:A:3387:GLU:HA	1:A:3390:GLN:HE21	1.82	0.44
2:B:245:LYS:H	2:B:245:LYS:HG2	1.57	0.44
1:A:303:HIS:O	1:A:303:HIS:ND1	2.44	0.44
1:A:654:ILE:O	1:A:658:THR:OG1	2.30	0.44
1:A:1896:ILE:HA	1:A:1899:VAL:HG12	1.97	0.44
1:A:3681:LYS:HE3	1:A:3687:MET:HE3	1.99	0.44
1:A:3697:ASN:C	1:A:3698:GLU:O	2.50	0.44
2:B:36:ASP:N	2:B:81:ASP:OD1	2.45	0.44
1:A:1279:LEU:HA	1:A:1358:LEU:HD21	1.99	0.44
1:A:1643:MET:HA	1:A:1646:LEU:HD12	1.99	0.44

Continued on next page...

Continued from previous page...

Atom-1	Atom-2	Interatomic distance (Å)	Clash overlap (Å)
2:B:389:CYS:HA	2:B:394:VAL:HG12	1.99	0.44
3:C:83:LEU:HD12	3:C:121:GLU:HB3	1.98	0.44
1:A:476:ARG:HH21	1:A:563:LEU:HD21	1.83	0.44
1:A:985:GLU:HG3	1:A:986:PRO:HD3	2.00	0.44
1:A:3327:ASN:ND2	1:A:3387:GLU:OE1	2.50	0.44
1:A:3736:LYS:HB2	1:A:3752:VAL:HG23	1.99	0.44
3:C:66:ASN:ND2	3:C:68:LEU:O	2.41	0.44
1:A:2124:SER:O	1:A:2128:PHE:CB	2.65	0.44
2:B:469:LEU:HD21	2:B:514:MET:HG3	2.00	0.44
1:A:670:LEU:HA	1:A:673:THR:HG22	2.00	0.44
1:A:1106:ILE:HA	1:A:1109:GLU:HB2	2.00	0.44
2:B:173:ASP:OD1	2:B:173:ASP:N	2.48	0.44
2:B:240:GLU:O	2:B:245:LYS:NZ	2.41	0.44
3:C:610:GLU:HA	3:C:613:SER:HB2	2.00	0.44
4:D:24:DG:H2'	5:E:25:DA:C8	2.53	0.44
1:A:2415:LEU:HD23	1:A:2415:LEU:HA	1.77	0.44
1:A:2826:LEU:HA	1:A:2829:LYS:HG3	1.99	0.44
2:B:397:LEU:HD21	3:C:479:THR:HG21	1.99	0.44
3:C:11:VAL:O	3:C:132:ILE:HA	2.18	0.44
3:C:27:ILE:HG13	3:C:28:GLU:H	1.83	0.44
1:A:385:TYR:HE2	1:A:428:PRO:HD2	1.83	0.44
1:A:2227:LYS:HA	1:A:2227:LYS:HD3	1.74	0.44
1:A:2848:PHE:HB2	1:A:3077:ILE:HD11	1.99	0.44
1:A:269:SER:O	1:A:269:SER:OG	2.36	0.43
1:A:427:VAL:HA	1:A:428:PRO:HD3	1.79	0.43
1:A:616:LYS:HA	1:A:617:PRO:HD2	1.79	0.43
1:A:3312:VAL:HG13	1:A:3316:LEU:HB2	1.99	0.43
1:A:4064:LEU:HD21	1:A:4077:TYR:HB3	2.00	0.43
2:B:388:LYS:HA	2:B:388:LYS:HD3	1.79	0.43
3:C:374:ALA:HA	3:C:377:LEU:HG	2.00	0.43
1:A:128:LEU:HD23	1:A:128:LEU:HA	1.87	0.43
1:A:1000:LYS:HE3	1:A:1000:LYS:HB3	1.86	0.43
2:B:352:PRO:HA	2:B:394:VAL:HA	2.00	0.43
1:A:791:ASP:OD1	1:A:791:ASP:N	2.51	0.43
1:A:3631:LYS:NZ	1:A:3678:GLY:O	2.51	0.43
3:C:39:THR:O	3:C:43:GLN:CB	2.66	0.43
3:C:267:ILE:H	3:C:267:ILE:HG13	1.55	0.43
3:C:388:ASP:OD1	3:C:388:ASP:N	2.41	0.43
2:B:87:PHE:HE2	2:B:105:LEU:HD22	1.83	0.43
3:C:12:LEU:HD13	3:C:38:ILE:HD11	2.00	0.43
1:A:2995:GLU:OE2	1:A:3040:TYR:OH	2.33	0.43

Continued on next page...

Continued from previous page...

Atom-1	Atom-2	Interatomic distance (Å)	Clash overlap (Å)
1:A:3631:LYS:NZ	1:A:3682:GLU:OE2	2.41	0.43
1:A:3789:ARG:HH11	1:A:3938:ILE:HD11	1.83	0.43
1:A:3815:LEU:HD22	1:A:3930:VAL:HG11	2.00	0.43
2:B:129:LYS:HD2	2:B:129:LYS:HA	1.85	0.43
1:A:171:LEU:HD12	1:A:171:LEU:HA	1.76	0.43
1:A:356:ASN:HD22	1:A:356:ASN:N	2.17	0.43
1:A:1103:ALA:HA	1:A:1106:ILE:HG12	1.99	0.43
1:A:86:LEU:HD11	1:A:114:VAL:HG11	2.00	0.43
1:A:2085:MET:HB2	1:A:2090:ARG:HG2	2.01	0.43
1:A:410:MET:HA	1:A:413:PHE:HB2	2.00	0.43
1:A:2527:HIS:HB3	1:A:2530:ARG:HE	1.84	0.43
3:C:663:GLN:HE22	3:C:685:LEU:HD12	1.83	0.43
1:A:841:SER:O	1:A:841:SER:OG	2.32	0.42
1:A:1850:VAL:O	1:A:1870:LYS:NZ	2.40	0.42
1:A:3300:VAL:HG11	1:A:3336:ILE:HG21	2.01	0.42
2:B:467:GLU:HA	2:B:470:ARG:HB2	2.00	0.42
1:A:1818:SER:HB3	1:A:1822:ARG:HH11	1.83	0.42
1:A:3567:VAL:HG22	1:A:3699:LEU:HD21	2.01	0.42
2:B:252:ARG:HD2	2:B:278:GLN:HE21	1.84	0.42
1:A:868:LYS:HE3	1:A:3126:LEU:HD23	2.01	0.42
1:A:1019:ASP:O	1:A:1026:ARG:NH1	2.51	0.42
2:B:455:THR:HA	2:B:456:PRO:HD3	1.89	0.42
1:A:816:SER:O	1:A:820:ARG:NH2	2.52	0.42
1:A:1340:ARG:HD3	1:A:1340:ARG:HA	1.81	0.42
3:C:261:ILE:HD13	3:C:377:LEU:HD22	2.01	0.42
3:C:391:ALA:HB3	3:C:408:ALA:HB3	2.02	0.42
1:A:471:LYS:HE2	1:A:471:LYS:HB3	1.80	0.42
1:A:3699:LEU:O	1:A:3700:GLU:CB	2.67	0.42
1:A:47:SER:HB3	1:A:50:VAL:HG22	2.02	0.42
2:B:244:ARG:HB3	2:B:245:LYS:HZ2	1.85	0.42
2:B:525:PHE:O	2:B:530:TYR:CE2	2.72	0.42
1:A:1825:LEU:HD22	1:A:1879:VAL:HG21	2.02	0.42
1:A:1982:ILE:HG22	1:A:1983:ASP:H	1.85	0.42
1:A:2008:ARG:HD3	1:A:2009:LYS:HZ2	1.84	0.42
3:C:457:LEU:HD22	3:C:533:ILE:HD13	2.02	0.42
1:A:1435:ASN:N	1:A:1435:ASN:OD1	2.53	0.42
1:A:1588:ASP:OD1	1:A:1588:ASP:N	2.36	0.42
1:A:2085:MET:H	1:A:2085:MET:HG3	1.60	0.42
1:A:2857:CYS:O	1:A:2861:ILE:HG12	2.20	0.42
1:A:2929:LEU:HD23	1:A:2929:LEU:HA	1.88	0.42
1:A:2952:ILE:HD11	1:A:2971:GLN:HB2	2.02	0.42

Continued on next page...

Continued from previous page...

Atom-1	Atom-2	Interatomic distance (Å)	Clash overlap (Å)
3:C:644:GLU:HG3	3:C:648:LYS:HD3	2.02	0.42
1:A:879:MET:O	1:A:882:SER:OG	2.33	0.42
1:A:911:LEU:HD23	1:A:911:LEU:HA	1.86	0.42
1:A:1960:LYS:HB3	1:A:1963:GLN:HE21	1.84	0.42
1:A:3378:TYR:OH	1:A:3426:LYS:NZ	2.45	0.42
2:B:219:ASP:OD1	2:B:219:ASP:N	2.52	0.42
3:C:148:ASP:O	3:C:152:HIS:HB2	2.20	0.42
1:A:868:LYS:HB3	1:A:868:LYS:HE2	1.93	0.41
1:A:3385:LEU:HD23	1:A:3385:LEU:HA	1.91	0.41
1:A:3544:ASP:HA	1:A:3548:GLY:HA3	2.01	0.41
2:B:470:ARG:HE	3:C:347:LYS:HB3	1.84	0.41
1:A:1664:SER:HA	1:A:1668:PHE:HB3	2.01	0.41
1:A:2284:ASP:O	1:A:2285:LEU:O	2.37	0.41
1:A:4075:ARG:HA	1:A:4078:VAL:HG12	2.01	0.41
1:A:1089:PHE:HE2	1:A:1100:VAL:HG11	1.84	0.41
1:A:1442:GLN:O	1:A:1446:SER:HB2	2.20	0.41
1:A:2795:GLN:O	1:A:2799:GLN:NE2	2.53	0.41
1:A:3550:LYS:HE2	1:A:3550:LYS:HB3	1.80	0.41
3:C:252:THR:HG22	3:C:258:SER:HA	2.02	0.41
1:A:1370:ARG:HA	1:A:1370:ARG:HD2	1.86	0.41
1:A:3413:TYR:HD2	1:A:3453:ALA:HB2	1.86	0.41
1:A:4030:GLU:H	1:A:4030:GLU:HG3	1.74	0.41
1:A:1582:LEU:HD12	1:A:1582:LEU:HA	1.89	0.41
1:A:2285:LEU:HD13	1:A:2285:LEU:N	2.36	0.41
2:B:179:ASP:OD2	2:B:182:LYS:N	2.47	0.41
2:B:249:LYS:HD2	2:B:249:LYS:HA	1.79	0.41
1:A:196:LEU:HD22	1:A:230:LEU:HD22	2.03	0.41
1:A:1890:HIS:CE1	1:A:1912:THR:HG21	2.56	0.41
1:A:2103:HIS:O	1:A:2107:SER:HB3	2.20	0.41
3:C:39:THR:O	3:C:43:GLN:HB2	2.20	0.41
1:A:724:GLU:O	1:A:728:SER:OG	2.35	0.41
1:A:1678:LEU:HD23	1:A:1678:LEU:HA	1.91	0.41
1:A:3029:LYS:HA	1:A:3029:LYS:HD3	1.83	0.41
1:A:4082:ARG:HD2	1:A:4082:ARG:HA	1.77	0.41
1:A:12:LEU:HA	1:A:12:LEU:HD23	1.90	0.41
1:A:2207:LYS:HA	1:A:2210:VAL:HG12	2.03	0.41
1:A:2262:GLY:H	1:A:2270:ASN:ND2	2.19	0.41
1:A:2531:LEU:HD12	1:A:2531:LEU:HA	1.88	0.41
2:B:290:ARG:HB3	3:C:311:ILE:HG12	2.03	0.41
1:A:356:ASN:HD22	1:A:356:ASN:H	1.68	0.41
1:A:356:ASN:N	1:A:356:ASN:ND2	2.69	0.41

Continued on next page...

Continued from previous page...

Atom-1	Atom-2	Interatomic distance (Å)	Clash overlap (Å)
1:A:540:MET:SD	1:A:540:MET:N	2.94	0.41
1:A:1722:PHE:HD1	1:A:1722:PHE:HA	1.71	0.41
1:A:3103:ILE:HD12	1:A:3103:ILE:HA	1.88	0.41
1:A:3567:VAL:HG22	1:A:3699:LEU:CD2	2.51	0.41
1:A:3740:ILE:HD13	1:A:3740:ILE:HG21	1.88	0.41
1:A:4046:TYR:CE2	1:A:4063:GLU:HG2	2.56	0.41
2:B:75:ILE:HG13	2:B:111:PRO:HB2	2.02	0.41
2:B:461:LYS:H	2:B:461:LYS:HG2	1.72	0.41
2:B:463:LYS:HD3	3:C:387:LEU:HD11	2.02	0.41
3:C:475:ASP:OD1	3:C:475:ASP:N	2.44	0.41
1:A:10:CYS:SG	1:A:11:SER:N	2.93	0.41
1:A:1221:ILE:HD12	1:A:1221:ILE:HA	1.84	0.41
1:A:1406:LEU:HD12	1:A:1415:LEU:HD22	2.03	0.41
1:A:164:LYS:HA	1:A:164:LYS:HD3	1.83	0.40
1:A:557:SER:O	1:A:557:SER:OG	2.36	0.40
1:A:1684:LEU:HD23	1:A:1684:LEU:HA	1.90	0.40
1:A:2285:LEU:HA	1:A:2286:PRO:HD2	1.72	0.40
1:A:2477:LEU:HA	1:A:2480:ILE:HG22	2.02	0.40
1:A:3697:ASN:O	1:A:3698:GLU:C	2.57	0.40
1:A:3831:ASP:HB3	1:A:3834:ALA:HB2	2.01	0.40
2:B:45:SER:OG	2:B:46:LYS:N	2.54	0.40
1:A:214:GLU:HG3	1:A:215:PRO:HD2	2.04	0.40
1:A:485:GLN:O	1:A:489:ARG:HG2	2.21	0.40
1:A:754:MET:SD	1:A:1021:VAL:CG1	3.09	0.40
1:A:1538:LEU:HD11	1:A:1555:HIS:CD2	2.56	0.40
1:A:2492:ASP:OD1	1:A:2492:ASP:N	2.52	0.40
1:A:3051:LEU:HD12	1:A:3051:LEU:HA	1.95	0.40
2:B:201:ASP:HA	2:B:221:ILE:HG13	2.04	0.40
2:B:477:SER:H	3:C:427:MET:HG3	1.85	0.40
3:C:469:LYS:HD3	3:C:469:LYS:HA	1.79	0.40
1:A:1803:GLU:OE2	1:A:1806:ARG:NH2	2.54	0.40
1:A:3575:LEU:HD23	1:A:3575:LEU:HA	1.89	0.40
2:B:46:LYS:NZ	2:B:139:SER:O	2.45	0.40
1:A:657:SER:HB2	1:A:666:PHE:HB3	2.03	0.40
1:A:1697:PRO:HG3	1:A:1753:SER:HB3	2.02	0.40
1:A:2524:PHE:CE1	1:A:2530:ARG:HG2	2.55	0.40
3:C:596:GLU:HA	3:C:599:ARG:HB2	2.03	0.40
1:A:73:LEU:HG	1:A:117:LYS:HD2	2.03	0.40
1:A:1534:ASN:HA	1:A:1535:PRO:HD3	1.86	0.40
1:A:2362:VAL:O	1:A:2366:LYS:HG2	2.21	0.40
1:A:3120:LEU:H	1:A:3120:LEU:HD23	1.86	0.40

There are no symmetry-related clashes.

5.3 Torsion angles [i](#)

5.3.1 Protein backbone [i](#)

In the following table, the Percentiles column shows the percent Ramachandran outliers of the chain as a percentile score with respect to all PDB entries followed by that with respect to all EM entries.

The Analysed column shows the number of residues for which the backbone conformation was analysed, and the total number of residues.

Mol	Chain	Analysed	Favoured	Allowed	Outliers	Percentiles	
1	A	3635/4128 (88%)	3076 (85%)	543 (15%)	16 (0%)	34	69
2	B	488/609 (80%)	410 (84%)	73 (15%)	5 (1%)	15	51
3	C	645/732 (88%)	547 (85%)	94 (15%)	4 (1%)	25	62
All	All	4768/5469 (87%)	4033 (85%)	710 (15%)	25 (0%)	32	66

All (25) Ramachandran outliers are listed below:

Mol	Chain	Res	Type
1	A	948	MET
1	A	1772	HIS
1	A	2123	PRO
1	A	2285	LEU
1	A	2573	PRO
1	A	3698	GLU
2	B	144	SER
2	B	245	LYS
1	A	167	PRO
1	A	609	ALA
1	A	2284	ASP
1	A	3083	SER
2	B	246	VAL
3	C	324	SER
3	C	410	PRO
1	A	617	PRO
1	A	682	TYR
1	A	2467	THR
1	A	681	LYS
2	B	531	PRO
3	C	322	PRO

Continued on next page...

Continued from previous page...

Mol	Chain	Res	Type
1	A	661	PRO
2	B	530	TYR
1	A	614	PRO
3	C	193	PRO

5.3.2 Protein sidechains [i](#)

In the following table, the Percentiles column shows the percent sidechain outliers of the chain as a percentile score with respect to all PDB entries followed by that with respect to all EM entries.

The Analysed column shows the number of residues for which the sidechain conformation was analysed, and the total number of residues.

Mol	Chain	Analysed	Rotameric	Outliers	Percentiles	
1	A	3207/3671 (87%)	3156 (98%)	51 (2%)	62	80
2	B	447/548 (82%)	442 (99%)	5 (1%)	73	85
3	C	586/649 (90%)	582 (99%)	4 (1%)	84	91
All	All	4240/4868 (87%)	4180 (99%)	60 (1%)	68	82

All (60) residues with a non-rotameric sidechain are listed below:

Mol	Chain	Res	Type
1	A	175	TYR
1	A	267	VAL
1	A	352	VAL
1	A	356	ASN
1	A	518	LYS
1	A	519	TRP
1	A	520	LYS
1	A	617	PRO
1	A	618	LYS
1	A	743	LEU
1	A	809	THR
1	A	920	THR
1	A	948	MET
1	A	991	LEU
1	A	1022	ASP
1	A	1027	ASP
1	A	1036	PHE
1	A	1045	THR

Continued on next page...

Continued from previous page...

Mol	Chain	Res	Type
1	A	1089	PHE
1	A	1096	VAL
1	A	1099	PHE
1	A	1105	VAL
1	A	1145	LEU
1	A	1540	THR
1	A	1722	PHE
1	A	1727	ARG
1	A	1728	GLU
1	A	1822	ARG
1	A	1837	ARG
1	A	1992	VAL
1	A	2085	MET
1	A	2196	TRP
1	A	2285	LEU
1	A	2328	ARG
1	A	2484	TYR
1	A	2491	THR
1	A	2530	ARG
1	A	2545	LEU
1	A	2824	LYS
1	A	2827	SER
1	A	2899	ARG
1	A	2972	TYR
1	A	3117	ILE
1	A	3177	ASN
1	A	3598	LYS
1	A	3669	LYS
1	A	3698	GLU
1	A	3699	LEU
1	A	3799	ARG
1	A	3959	MET
1	A	3977	THR
2	B	241	ASP
2	B	254[A]	ARG
2	B	254[B]	ARG
2	B	470	ARG
2	B	530	TYR
3	C	130	ARG
3	C	271	ARG
3	C	325	LYS
3	C	629	THR

Sometimes sidechains can be flipped to improve hydrogen bonding and reduce clashes. All (54) such sidechains are listed below:

Mol	Chain	Res	Type
1	A	32	HIS
1	A	109	ASN
1	A	344	GLN
1	A	356	ASN
1	A	454	GLN
1	A	833	HIS
1	A	978	GLN
1	A	982	GLN
1	A	1126	GLN
1	A	1142	HIS
1	A	1146	ASN
1	A	1175	HIS
1	A	1280	GLN
1	A	1457	GLN
1	A	1476	HIS
1	A	1534	ASN
1	A	1598	ASN
1	A	1624	GLN
1	A	1738	ASN
1	A	1794	GLN
1	A	1866	GLN
1	A	1957	ASN
1	A	2016	ASN
1	A	2177	ASN
1	A	2270	ASN
1	A	2348	GLN
1	A	2365	ASN
1	A	2514	ASN
1	A	2799	GLN
1	A	2885	GLN
1	A	2886	GLN
1	A	2954	GLN
1	A	3326	GLN
1	A	3459	ASN
1	A	3524	ASN
1	A	3564	GLN
1	A	3569	GLN
1	A	3573	ASN
1	A	3671	ASN
1	A	3704	GLN
1	A	3743	HIS

Continued on next page...

Continued from previous page...

Mol	Chain	Res	Type
1	A	3772	ASN
2	B	98	ASN
2	B	360	HIS
2	B	423	GLN
2	B	515	ASN
3	C	75	GLN
3	C	201	GLN
3	C	360	GLN
3	C	452	ASN
3	C	511	HIS
3	C	527	GLN
3	C	627	ASN
3	C	656	ASN

5.3.3 RNA [i](#)

There are no RNA molecules in this entry.

5.4 Non-standard residues in protein, DNA, RNA chains [i](#)

There are no non-standard protein/DNA/RNA residues in this entry.

5.5 Carbohydrates [i](#)

There are no monosaccharides in this entry.

5.6 Ligand geometry [i](#)

There are no ligands in this entry.

5.7 Other polymers [i](#)

There are no such residues in this entry.

5.8 Polymer linkage issues [i](#)

There are no chain breaks in this entry.

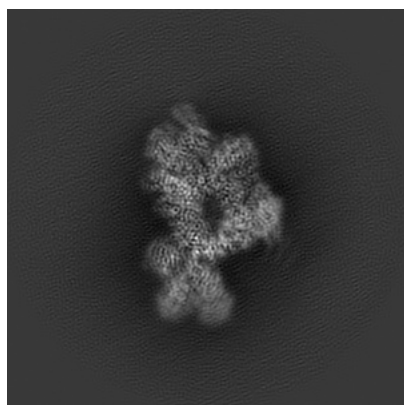
6 Map visualisation [i](#)

This section contains visualisations of the EMDB entry EMD-22618. These allow visual inspection of the internal detail of the map and identification of artifacts.

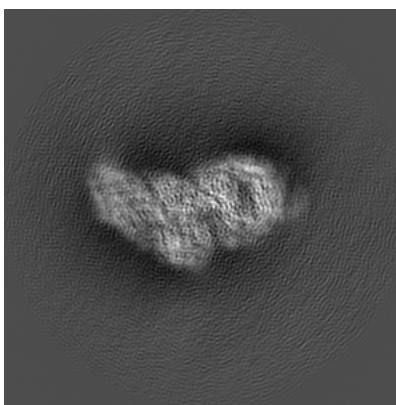
No raw map or half-maps were deposited for this entry and therefore no images, graphs, etc. pertaining to the raw map can be shown.

6.1 Orthogonal projections [i](#)

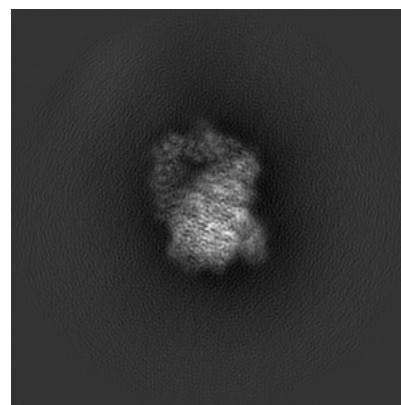
6.1.1 Primary map



X



Y

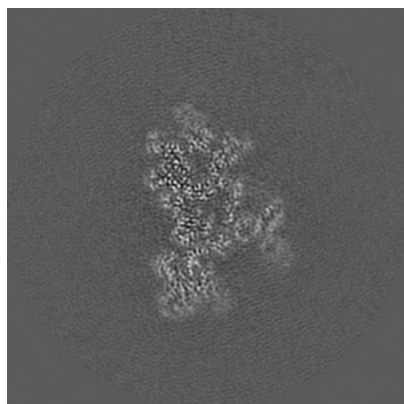


Z

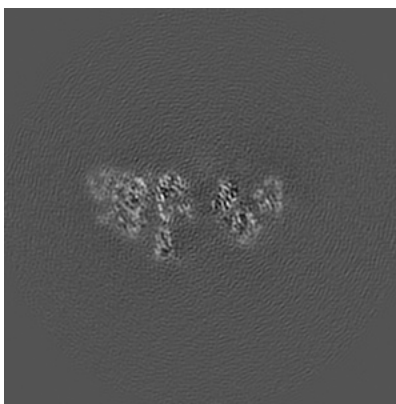
The images above show the map projected in three orthogonal directions.

6.2 Central slices [i](#)

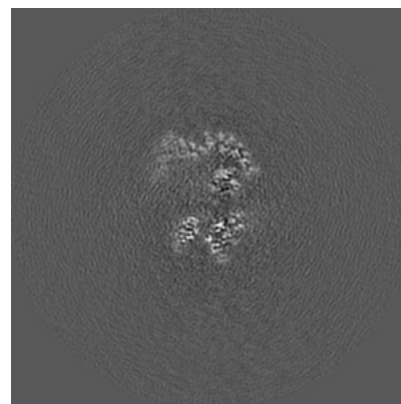
6.2.1 Primary map



X Index: 176



Y Index: 176

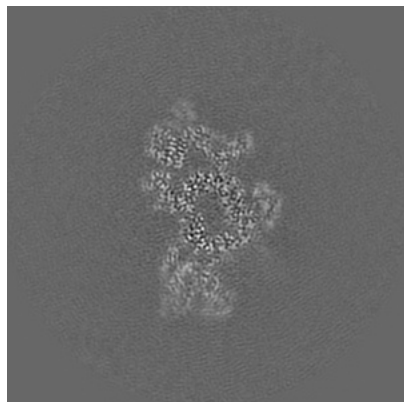


Z Index: 176

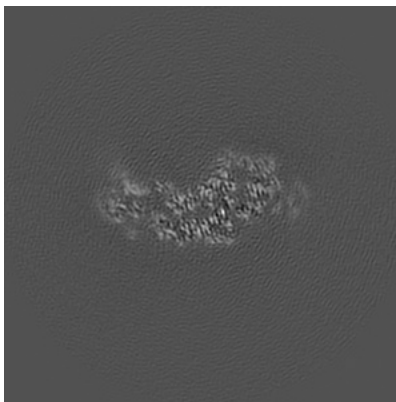
The images above show central slices of the map in three orthogonal directions.

6.3 Largest variance slices [i](#)

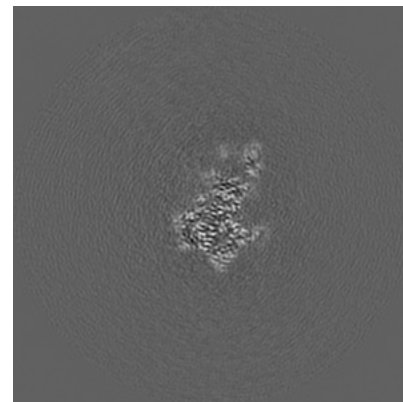
6.3.1 Primary map



X Index: 186



Y Index: 154

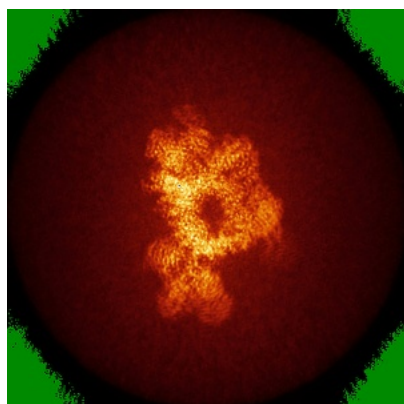


Z Index: 195

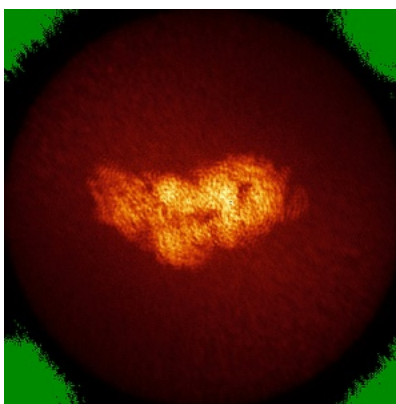
The images above show the largest variance slices of the map in three orthogonal directions.

6.4 Orthogonal standard-deviation projections (False-color) [i](#)

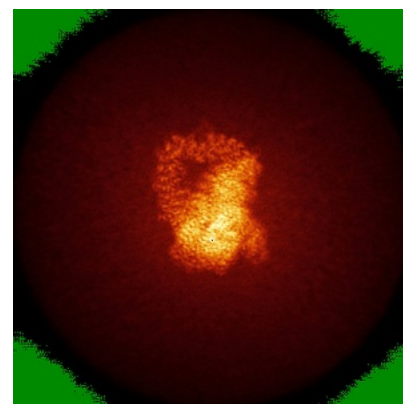
6.4.1 Primary map



X



Y



Z

The images above show the map standard deviation projections with false color in three orthogonal directions. Minimum values are shown in green, max in blue, and dark to light orange shades represent small to large values respectively.

6.5 Orthogonal surface views [i](#)

6.5.1 Primary map



X



Y



Z

The images above show the 3D surface view of the map at the recommended contour level 0.012. These images, in conjunction with the slice images, may facilitate assessment of whether an appropriate contour level has been provided.

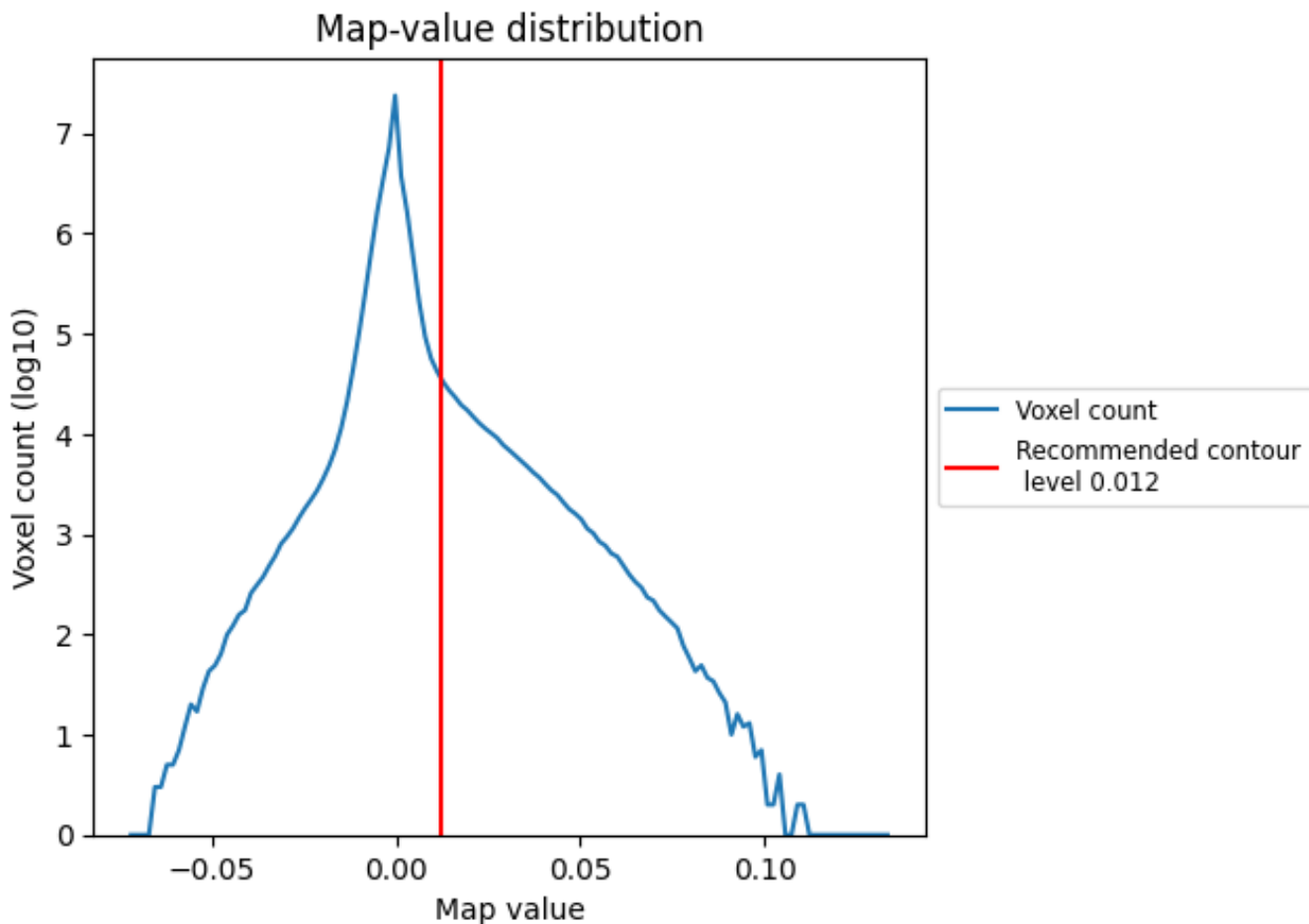
6.6 Mask visualisation [i](#)

This section was not generated. No masks/segmentation were deposited.

7 Map analysis [i](#)

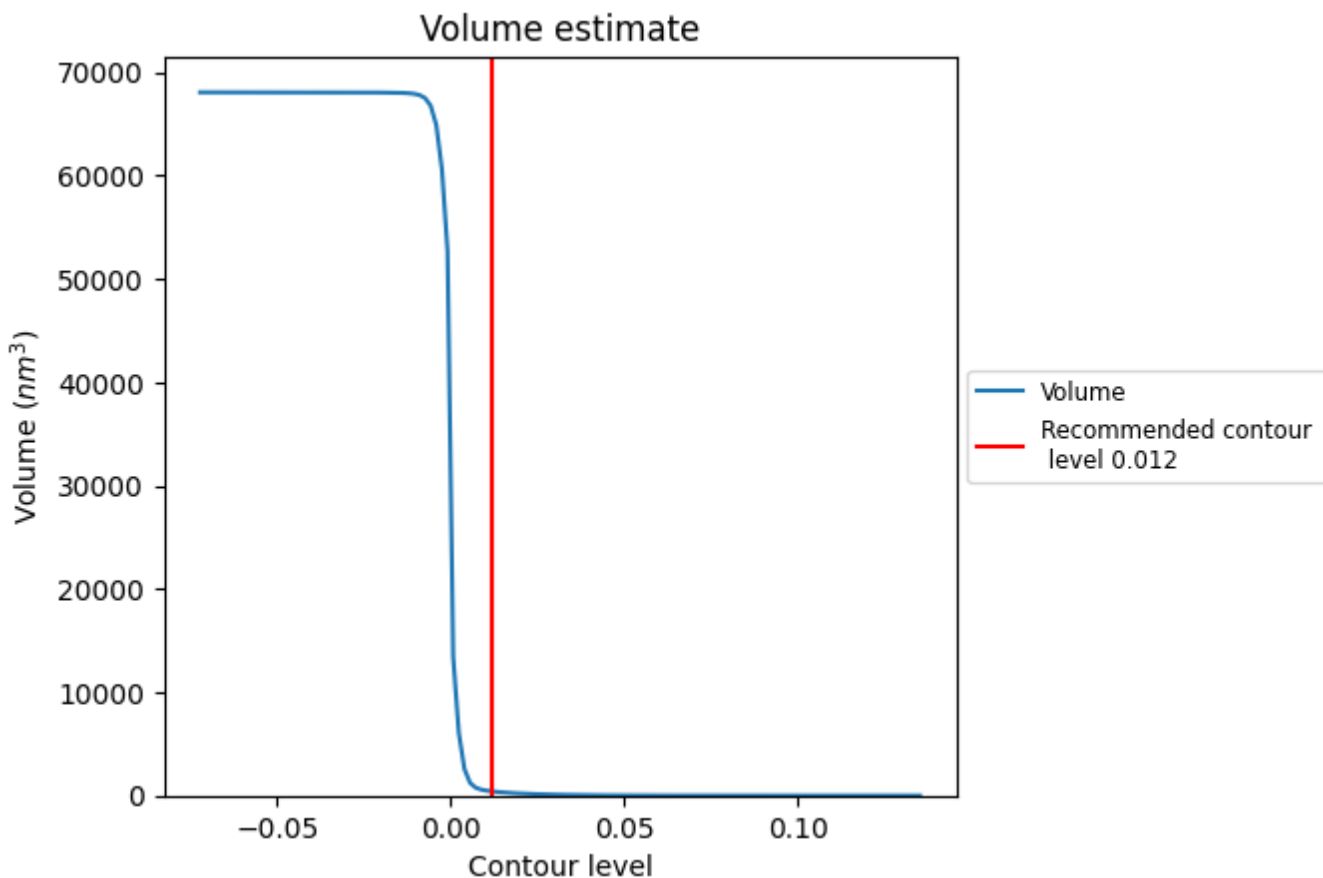
This section contains the results of statistical analysis of the map.

7.1 Map-value distribution [i](#)



The map-value distribution is plotted in 128 intervals along the x-axis. The y-axis is logarithmic. A spike in this graph at zero usually indicates that the volume has been masked.

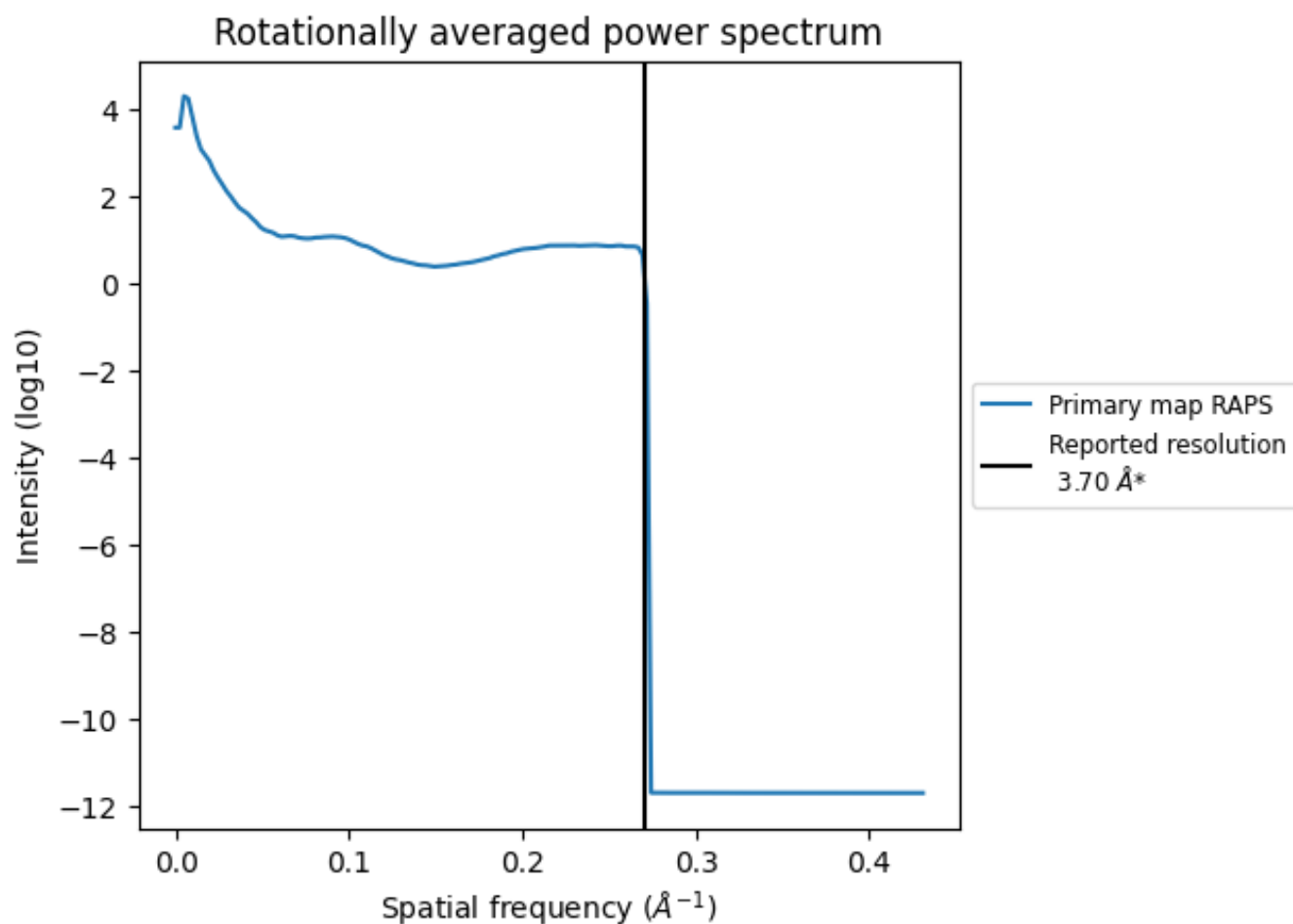
7.2 Volume estimate [i](#)



The volume at the recommended contour level is 405 nm³; this corresponds to an approximate mass of 366 kDa.

The volume estimate graph shows how the enclosed volume varies with the contour level. The recommended contour level is shown as a vertical line and the intersection between the line and the curve gives the volume of the enclosed surface at the given level.

7.3 Rotationally averaged power spectrum [i](#)



*Reported resolution corresponds to spatial frequency of 0.270 Å⁻¹

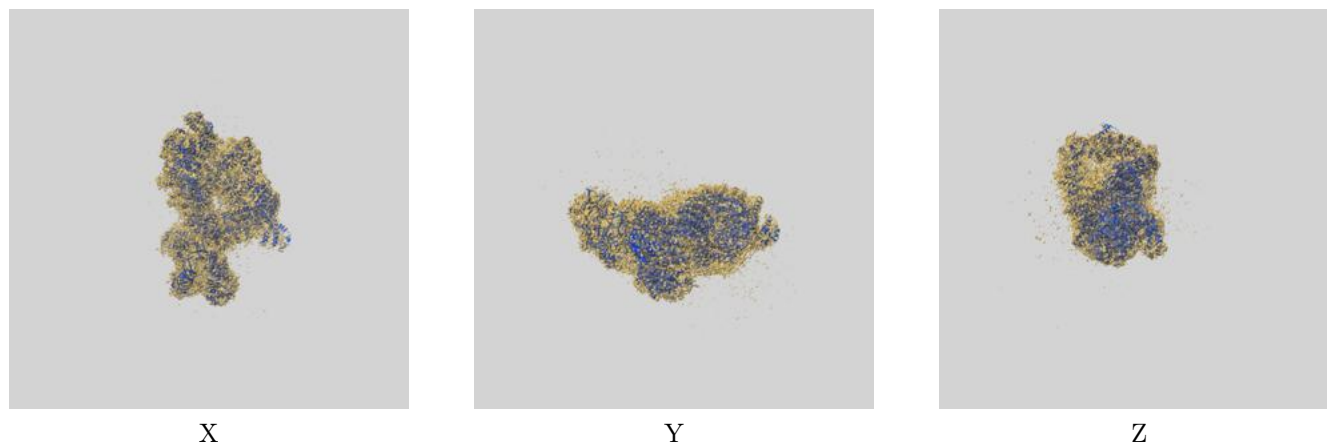
8 Fourier-Shell correlation

This section was not generated. No FSC curve or half-maps provided.

9 Map-model fit [i](#)

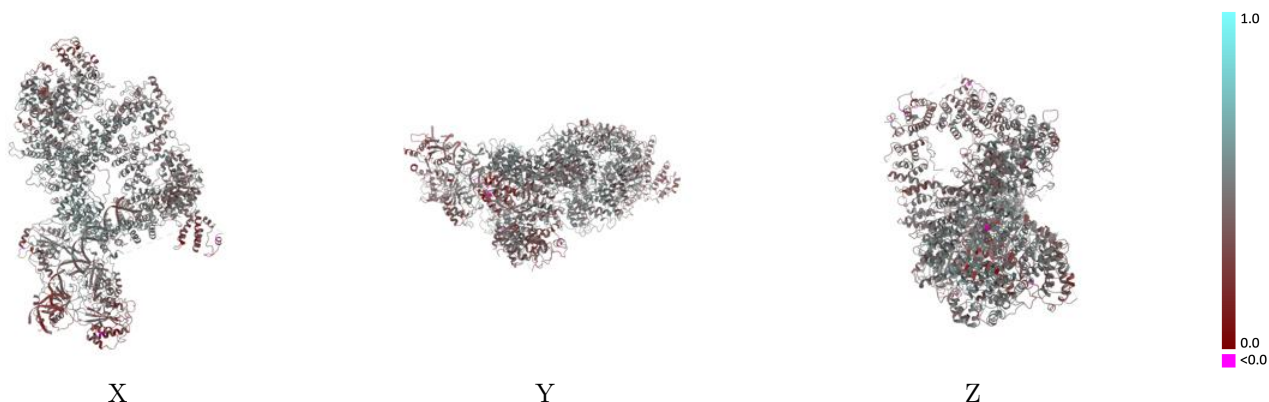
This section contains information regarding the fit between EMDB map EMD-22618 and PDB model 7K0Y. Per-residue inclusion information can be found in section 3 on page 4.

9.1 Map-model overlay [i](#)



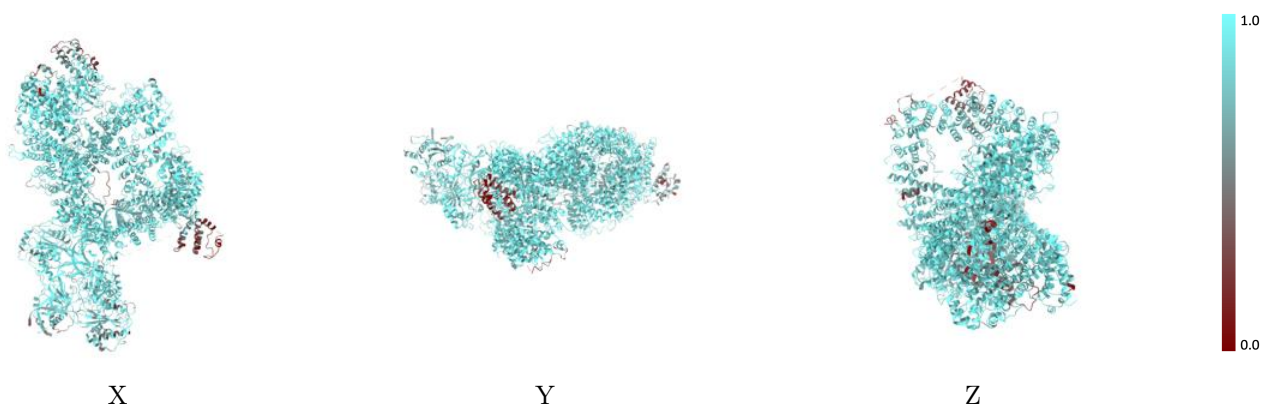
The images above show the 3D surface view of the map at the recommended contour level 0.012 at 50% transparency in yellow overlaid with a ribbon representation of the model coloured in blue. These images allow for the visual assessment of the quality of fit between the atomic model and the map.

9.2 Q-score mapped to coordinate model [i](#)



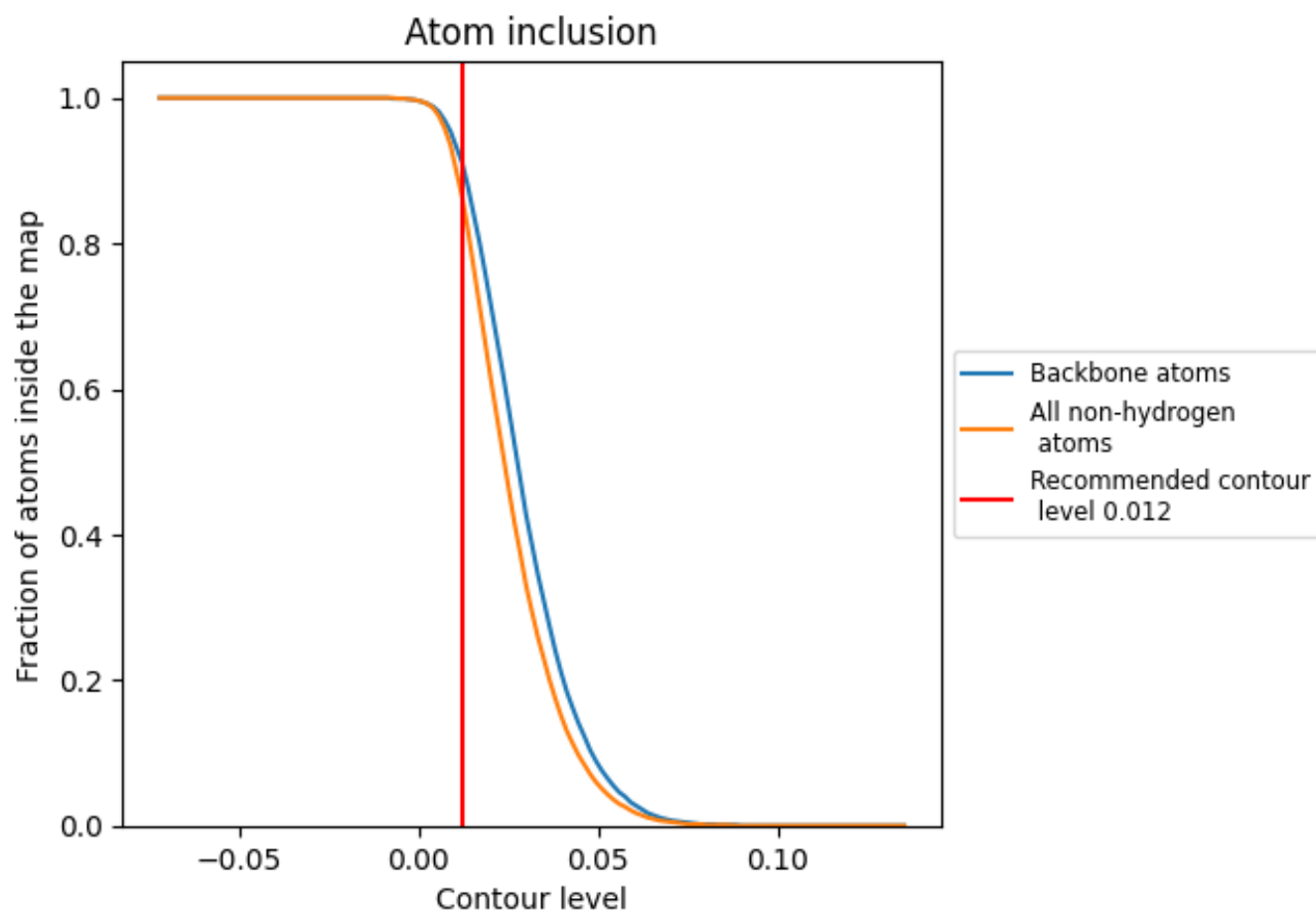
The images above show the model with each residue coloured according to its Q-score. This shows their resolvability in the map with higher Q-score values reflecting better resolvability. Please note: Q-score is calculating the resolvability of atoms, and thus high values are only expected at resolutions at which atoms can be resolved. Low Q-score values may therefore be expected for many entries.

9.3 Atom inclusion mapped to coordinate model [i](#)



The images above show the model with each residue coloured according to its atom inclusion. This shows to what extent they are inside the map at the recommended contour level (0.012).

















9.4 Atom inclusion [i](#)



At the recommended contour level, 91% of all backbone atoms, 87% of all non-hydrogen atoms, are inside the map.

9.5 Map-model fit summary

The table lists the average atom inclusion at the recommended contour level (0.012) and Q-score for the entire model and for each chain.

Chain	Atom inclusion	Q-score
All	 0.8680	 0.4410
A	 0.8900	 0.4600
B	 0.8650	 0.4240
C	 0.7390	 0.3700
D	 0.9360	 0.4050
E	 0.7810	 0.2720
F	 0.8960	 0.3270
G	 0.9580	 0.4090

