



Full wwPDB X-ray Structure Validation Report ⓘ

Oct 10, 2023 – 12:18 PM EDT

PDB ID : 7KD7
Title : Crystal structure of human NatD (NAA40) bound to a bisubstrate analogue
Authors : Deng, S.; Marmorstein, R.
Deposited on : 2020-10-08
Resolution : 1.44 Å(reported)

This is a Full wwPDB X-ray Structure Validation Report for a publicly released PDB entry.

We welcome your comments at validation@mail.wwpdb.org

A user guide is available at

<https://www.wwpdb.org/validation/2017/XrayValidationReportHelp>

with specific help available everywhere you see the ⓘ symbol.

The types of validation reports are described at

<http://www.wwpdb.org/validation/2017/FAQs#types>.

The following versions of software and data (see [references ⓘ](#)) were used in the production of this report:

MolProbity : 4.02b-467
Mogul : 1.8.5 (274361), CSD as541be (2020)
Xtriage (Phenix) : 1.13
EDS : 2.35.1
buster-report : 1.1.7 (2018)
Percentile statistics : 20191225.v01 (using entries in the PDB archive December 25th 2019)
Refmac : 5.8.0158
CCP4 : 7.0.044 (Gargrove)
Ideal geometry (proteins) : Engh & Huber (2001)
Ideal geometry (DNA, RNA) : Parkinson et al. (1996)
Validation Pipeline (wwPDB-VP) : 2.35.1

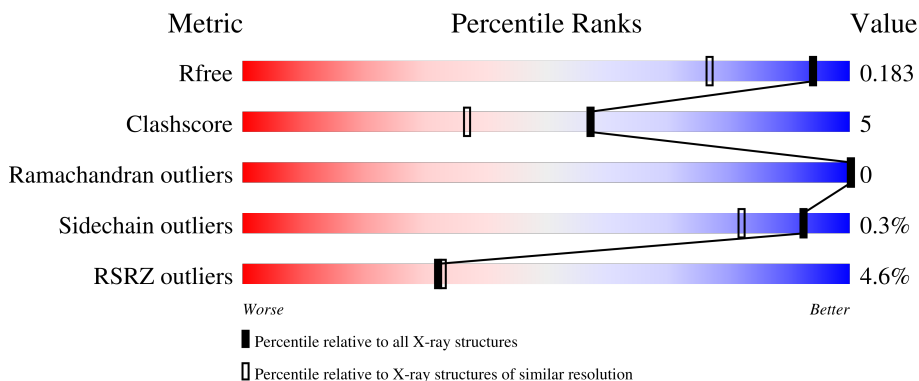
1 Overall quality at a glance

The following experimental techniques were used to determine the structure:

X-RAY DIFFRACTION

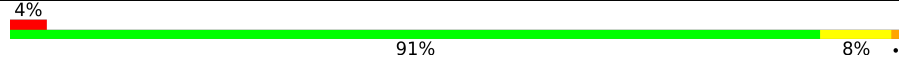
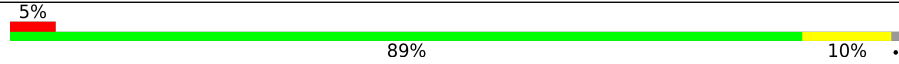
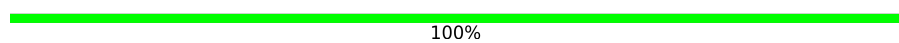
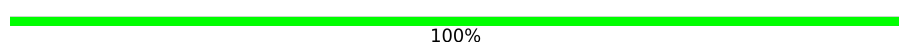
The reported resolution of this entry is 1.44 Å.

Percentile scores (ranging between 0-100) for global validation metrics of the entry are shown in the following graphic. The table shows the number of entries on which the scores are based.



Metric	Whole archive (#Entries)	Similar resolution (#Entries, resolution range(Å))
R_{free}	130704	2021 (1.46-1.42)
Clashscore	141614	2086 (1.46-1.42)
Ramachandran outliers	138981	2047 (1.46-1.42)
Sidechain outliers	138945	2047 (1.46-1.42)
RSRZ outliers	127900	1993 (1.46-1.42)

The table below summarises the geometric issues observed across the polymeric chains and their fit to the electron density. The red, orange, yellow and green segments of the lower bar indicate the fraction of residues that contain outliers for ≥ 3 , 2, 1 and 0 types of geometric quality criteria respectively. A grey segment represents the fraction of residues that are not modelled. The numeric value for each fraction is indicated below the corresponding segment, with a dot representing fractions $\leq 5\%$. The upper red bar (where present) indicates the fraction of residues that have poor fit to the electron density. The numeric value is given above the bar.

Mol	Chain	Length	Quality of chain
1	A	204	 4% 91% 8%
1	D	204	 5% 89% 10%
2	B	5	 100%
2	E	5	 100%

The following table lists non-polymeric compounds, carbohydrate monomers and non-standard

residues in protein, DNA, RNA chains that are outliers for geometric or electron-density-fit criteria:

Mol	Type	Chain	Res	Chirality	Geometry	Clashes	Electron density
3	GOL	D	502	-	X	-	-

2 Entry composition [i](#)

There are 8 unique types of molecules in this entry. The entry contains 7053 atoms, of which 3233 are hydrogens and 0 are deuteriums.

In the tables below, the ZeroOcc column contains the number of atoms modelled with zero occupancy, the AltConf column contains the number of residues with at least one atom in alternate conformation and the Trace column contains the number of residues modelled with at most 2 atoms.

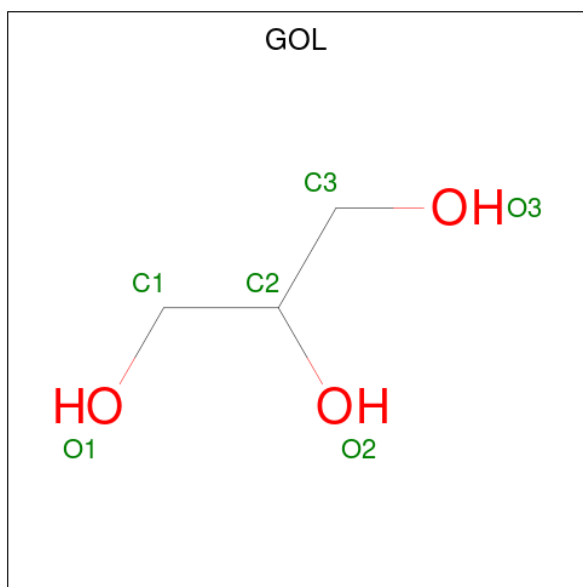
- Molecule 1 is a protein called N-alpha-acetyltransferase 40.

Mol	Chain	Residues	Atoms					ZeroOcc	AltConf	Trace	
			Total	C	H	N	O				S
1	D	202	Total 3113	C 1010	H 1514	N 272	O 302	S 15	0	0	0
1	A	204	Total 3177	C 1029	H 1549	N 278	O 306	S 15	0	0	0

- Molecule 2 is a protein called SER-GLY-ARG-GLY-LYS.

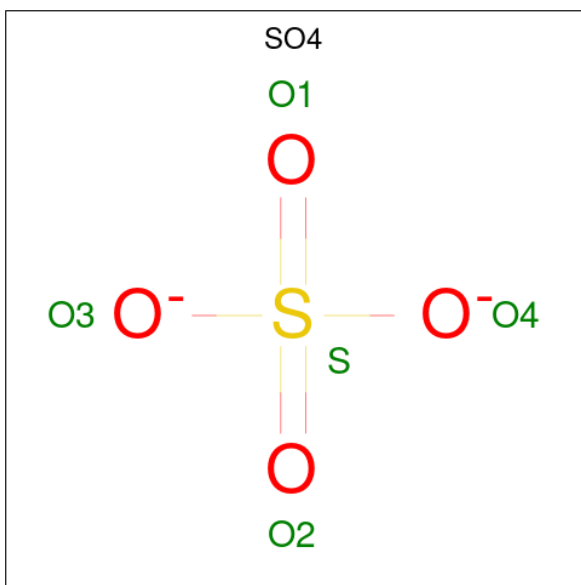
Mol	Chain	Residues	Atoms					ZeroOcc	AltConf	Trace
			Total	C	H	N	O			
2	E	5	Total 59	C 17	H 28	N 8	O 6	0	0	0
2	B	5	Total 59	C 17	H 28	N 8	O 6	0	0	0

- Molecule 3 is GLYCEROL (three-letter code: GOL) (formula: $C_3H_8O_3$).



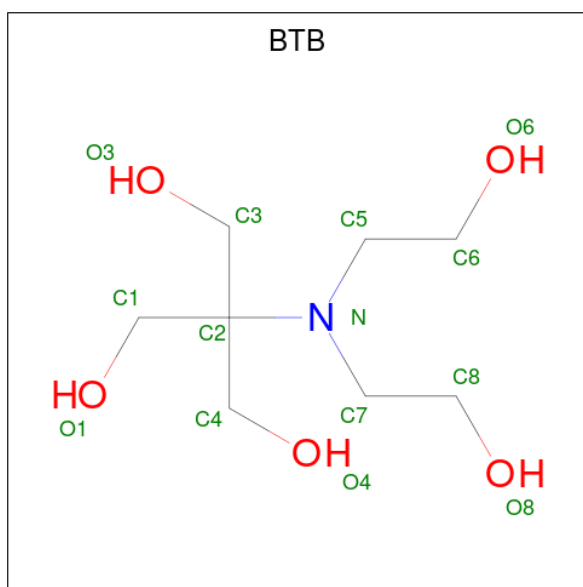
Mol	Chain	Residues	Atoms				ZeroOcc	AltConf
3	D	1	Total	C	H	O	0	0
			12	3	6	3		
3	D	1	Total	C	H	O	0	0
			12	3	6	3		
3	A	1	Total	C	H	O	0	0
			13	3	7	3		
3	A	1	Total	C	H	O	0	0
			12	3	6	3		

- Molecule 4 is SULFATE ION (three-letter code: SO4) (formula: O₄S).



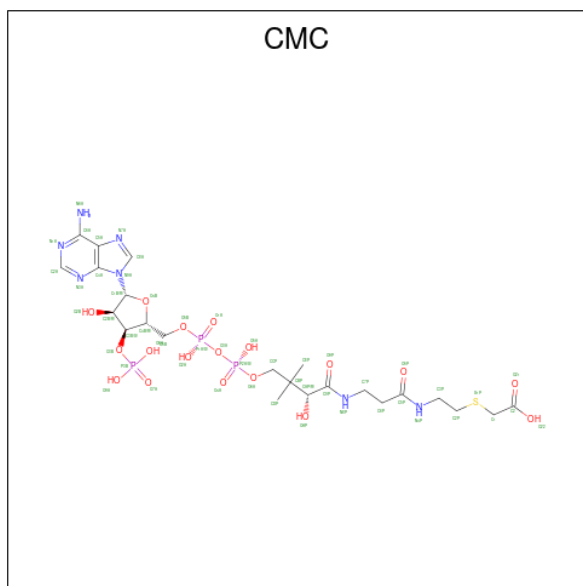
Mol	Chain	Residues	Atoms			ZeroOcc	AltConf
4	D	1	Total	O	S	0	0
			5	4	1		
4	D	1	Total	O	S	0	0
			5	4	1		
4	D	1	Total	O	S	0	0
			5	4	1		
4	A	1	Total	O	S	0	0
			5	4	1		

- Molecule 5 is 2-[BIS-(2-HYDROXY-ETHYL)-AMINO]-2-HYDROXYMETHYL-PROPAN E-1,3-DIOL (three-letter code: BTB) (formula: C₈H₁₉NO₅).



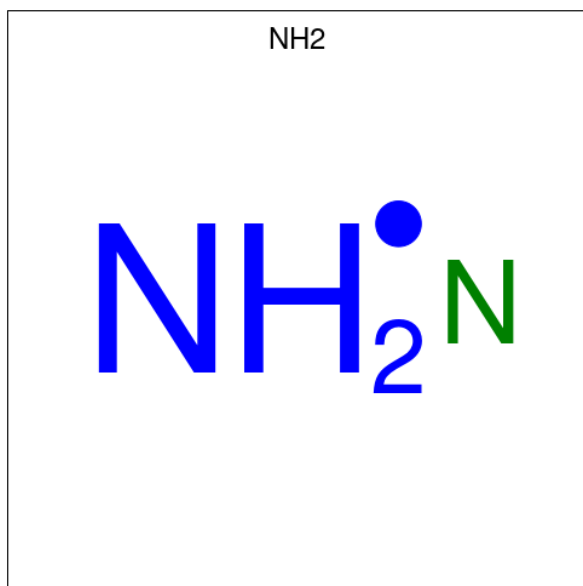
Mol	Chain	Residues	Atoms					ZeroOcc	AltConf
			Total	C	H	N	O		
5	D	1	33	8	19	1	5	0	0

- Molecule 6 is CARBOXYMETHYL COENZYME *A (three-letter code: CMC) (formula: $C_{23}H_{38}N_7O_{18}P_3S$) (labeled as "Ligand of Interest" by depositor).



Mol	Chain	Residues	Atoms							ZeroOcc	AltConf
			Total	C	H	N	O	P	S		
6	E	1	84	23	33	7	17	3	1	0	0
6	B	1	84	23	33	7	17	3	1	0	0

- Molecule 7 is AMINO GROUP (three-letter code: NH2) (formula: H₂N).



Mol	Chain	Residues	Atoms			ZeroOcc	AltConf
7	E	1	Total	H	N	0	0
			3	2	1		
7	B	1	Total	H	N	0	0
			3	2	1		

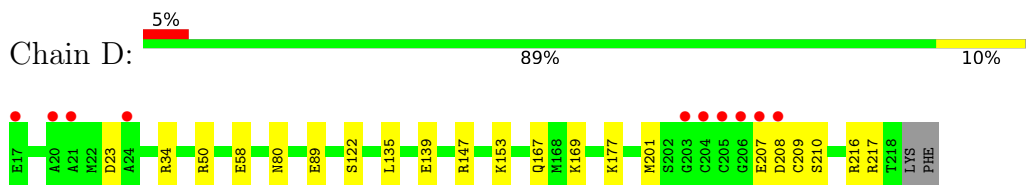
- Molecule 8 is water.

Mol	Chain	Residues	Atoms		ZeroOcc	AltConf
8	D	161	Total	O	0	0
			161	161		
8	E	12	Total	O	0	0
			12	12		
8	A	184	Total	O	0	0
			184	184		
8	B	12	Total	O	0	0
			12	12		

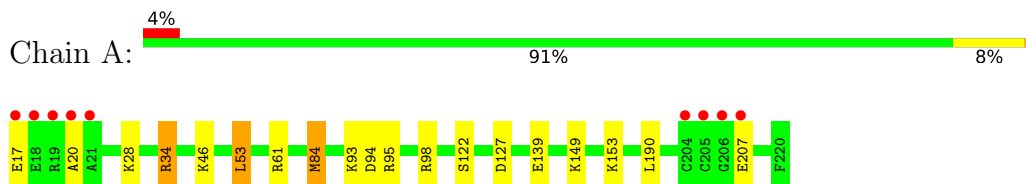
3 Residue-property plots [i](#)

These plots are drawn for all protein, RNA, DNA and oligosaccharide chains in the entry. The first graphic for a chain summarises the proportions of the various outlier classes displayed in the second graphic. The second graphic shows the sequence view annotated by issues in geometry and electron density. Residues are color-coded according to the number of geometric quality criteria for which they contain at least one outlier: green = 0, yellow = 1, orange = 2 and red = 3 or more. A red dot above a residue indicates a poor fit to the electron density ($RSRZ > 2$). Stretches of 2 or more consecutive residues without any outlier are shown as a green connector. Residues present in the sample, but not in the model, are shown in grey.

- Molecule 1: N-alpha-acetyltransferase 40



- Molecule 1: N-alpha-acetyltransferase 40



- Molecule 2: SER-GLY-ARG-GLY-LYS



There are no outlier residues recorded for this chain.

- Molecule 2: SER-GLY-ARG-GLY-LYS



There are no outlier residues recorded for this chain.

4 Data and refinement statistics

Property	Value	Source
Space group	P 21 21 21	Depositor
Cell constants a, b, c, α , β , γ	46.43Å 74.35Å 126.82Å 90.00° 90.00° 90.00°	Depositor
Resolution (Å)	63.41 – 1.44 63.41 – 1.44	Depositor EDS
% Data completeness (in resolution range)	99.2 (63.41-1.44) 99.2 (63.41-1.44)	Depositor EDS
R_{merge}	0.04	Depositor
R_{sym}	(Not available)	Depositor
$\langle I/\sigma(I) \rangle$ ¹	1.93 (at 1.44Å)	Xtrriage
Refinement program	PHENIX 1.14_3260	Depositor
R, R_{free}	0.161 , 0.183 0.161 , 0.183	Depositor DCC
R_{free} test set	4010 reflections (5.02%)	wwPDB-VP
Wilson B-factor (Å ²)	19.0	Xtrriage
Anisotropy	0.214	Xtrriage
Bulk solvent k_{sol} (e/Å ³), B_{sol} (Å ²)	0.42 , 46.0	EDS
L-test for twinning ²	$\langle L \rangle = 0.50$, $\langle L^2 \rangle = 0.33$	Xtrriage
Estimated twinning fraction	No twinning to report.	Xtrriage
F_o, F_c correlation	0.97	EDS
Total number of atoms	7053	wwPDB-VP
Average B, all atoms (Å ²)	27.0	wwPDB-VP

Xtrriage's analysis on translational NCS is as follows: *The largest off-origin peak in the Patterson function is 6.77% of the height of the origin peak. No significant pseudotranslation is detected.*

¹Intensities estimated from amplitudes.

²Theoretical values of $\langle |L| \rangle$, $\langle L^2 \rangle$ for acentric reflections are 0.5, 0.333 respectively for untwinned datasets, and 0.375, 0.2 for perfectly twinned datasets.

5 Model quality

5.1 Standard geometry

Bond lengths and bond angles in the following residue types are not validated in this section: BTB, NH2, SO4, CMC, GOL

The Z score for a bond length (or angle) is the number of standard deviations the observed value is removed from the expected value. A bond length (or angle) with $|Z| > 5$ is considered an outlier worth inspection. RMSZ is the root-mean-square of all Z scores of the bond lengths (or angles).

Mol	Chain	Bond lengths		Bond angles	
		RMSZ	# Z >5	RMSZ	# Z >5
1	A	0.74	0/1664	0.92	7/2245 (0.3%)
1	D	0.76	0/1634	0.84	2/2207 (0.1%)
2	B	0.76	0/30	0.71	0/37
2	E	0.95	0/30	0.65	0/37
All	All	0.75	0/3358	0.88	9/4526 (0.2%)

There are no bond length outliers.

All (9) bond angle outliers are listed below:

Mol	Chain	Res	Type	Atoms	Z	Observed(°)	Ideal(°)
1	A	34	ARG	NE-CZ-NH2	10.27	125.44	120.30
1	A	34	ARG	NE-CZ-NH1	-8.82	115.89	120.30
1	A	84	MET	CG-SD-CE	8.47	113.75	100.20
1	D	34	ARG	NE-CZ-NH2	7.50	124.05	120.30
1	A	98	ARG	NE-CZ-NH2	-5.84	117.38	120.30
1	A	127	ASP	CB-CG-OD1	5.78	123.50	118.30
1	A	53	LEU	CB-CG-CD2	-5.43	101.76	111.00
1	D	201	MET	CG-SD-CE	5.28	108.65	100.20
1	A	94	ASP	CB-CG-OD1	5.20	122.98	118.30

There are no chirality outliers.

There are no planarity outliers.

5.2 Too-close contacts

In the following table, the Non-H and H(model) columns list the number of non-hydrogen atoms and hydrogen atoms in the chain respectively. The H(added) column lists the number of hydrogen atoms added and optimized by MolProbity. The Clashes column lists the number of clashes within the asymmetric unit, whereas Symm-Clashes lists symmetry-related clashes.

Mol	Chain	Non-H	H(model)	H(added)	Clashes	Symm-Clashes
1	A	1628	1549	1549	13	0
1	D	1599	1514	1514	17	0
2	B	31	28	28	0	0
2	E	31	28	28	0	0
3	A	12	13	14	1	0
3	D	12	12	13	5	0
4	A	5	0	0	0	0
4	D	15	0	0	0	0
5	D	14	19	19	1	0
6	B	51	33	33	0	0
6	E	51	33	33	0	0
7	B	1	2	0	0	0
7	E	1	2	0	0	0
8	A	184	0	0	7	0
8	B	12	0	0	1	0
8	D	161	0	0	9	0
8	E	12	0	0	0	0
All	All	3820	3233	3231	33	0

The all-atom clashscore is defined as the number of clashes found per 1000 atoms (including hydrogen atoms). The all-atom clashscore for this structure is 5.

All (33) close contacts within the same asymmetric unit are listed below, sorted by their clash magnitude.

Atom-1	Atom-2	Interatomic distance (Å)	Clash overlap (Å)
1:D:153:LYS:NZ	8:D:603:HOH:O	2.10	0.84
3:D:501:GOL:O1	8:D:601:HOH:O	1.99	0.80
1:D:177:LYS:NZ	1:D:209:CYS:O	2.15	0.80
1:A:34:ARG:NH1	8:A:1402:HOH:O	2.17	0.78
1:A:20:ALA:O	8:A:1401:HOH:O	2.03	0.76
1:D:207:GLU:O	8:D:602:HOH:O	2.04	0.74
1:D:147:ARG:NH1	3:D:502:GOL:O2	2.21	0.74
1:A:61:ARG:NH2	8:A:1403:HOH:O	2.23	0.72
1:A:53:LEU:HD13	1:A:149:LYS:HD3	1.74	0.69
1:D:23:ASP:OD2	8:D:604:HOH:O	2.11	0.68
1:A:153:LYS:HG3	1:A:190:LEU:HD21	1.76	0.66
1:D:58:GLU:OE1	8:D:605:HOH:O	2.15	0.59
1:A:207:GLU:CD	8:A:1412:HOH:O	2.43	0.57
1:D:216:ARG:HH12	3:D:501:GOL:H31	1.72	0.54
1:D:80:ASN:O	3:D:502:GOL:H11	2.09	0.53
1:A:28:LYS:NZ	8:A:1410:HOH:O	2.40	0.53
1:A:93:LYS:HE3	1:A:95:ARG:H	1.75	0.52

Continued on next page...

Continued from previous page...

Atom-1	Atom-2	Interatomic distance (Å)	Clash overlap (Å)
3:D:502:GOL:H31	8:D:656:HOH:O	2.11	0.50
1:A:46:LYS:HE2	8:A:1530:HOH:O	2.11	0.49
1:D:153:LYS:NZ	8:D:607:HOH:O	2.28	0.49
1:D:153:LYS:CE	8:D:607:HOH:O	2.61	0.48
1:A:84:MET:CE	8:B:407:HOH:O	2.64	0.46
1:D:177:LYS:CE	1:D:209:CYS:O	2.67	0.43
1:D:208:ASP:HA	8:D:602:HOH:O	2.18	0.43
1:A:122:SER:HA	1:A:139:GLU:O	2.20	0.42
1:D:89:GLU:OE1	1:D:210:SER:OG	2.28	0.41
1:D:167:GLN:OE1	3:A:1301:GOL:H32	2.20	0.41
5:D:506:BTB:O4	5:D:506:BTB:H82	2.20	0.41
1:A:17:GLU:CB	1:A:20:ALA:HB3	2.50	0.41
1:A:207:GLU:CG	8:A:1406:HOH:O	2.68	0.41
1:D:135:LEU:C	1:D:135:LEU:HD23	2.41	0.41
1:D:122:SER:HA	1:D:139:GLU:O	2.21	0.40
1:D:169:LYS:O	1:D:217:ARG:HD2	2.21	0.40

There are no symmetry-related clashes.

5.3 Torsion angles [i](#)

5.3.1 Protein backbone [i](#)

In the following table, the Percentiles column shows the percent Ramachandran outliers of the chain as a percentile score with respect to all X-ray entries followed by that with respect to entries of similar resolution.

The Analysed column shows the number of residues for which the backbone conformation was analysed, and the total number of residues.

Mol	Chain	Analysed	Favoured	Allowed	Outliers	Percentiles	
1	A	202/204 (99%)	198 (98%)	4 (2%)	0	100	100
1	D	200/204 (98%)	195 (98%)	5 (2%)	0	100	100
2	B	3/5 (60%)	3 (100%)	0	0	100	100
2	E	3/5 (60%)	3 (100%)	0	0	100	100
All	All	408/418 (98%)	399 (98%)	9 (2%)	0	100	100

There are no Ramachandran outliers to report.

5.3.2 Protein sidechains [i](#)

In the following table, the Percentiles column shows the percent sidechain outliers of the chain as a percentile score with respect to all X-ray entries followed by that with respect to entries of similar resolution.

The Analysed column shows the number of residues for which the sidechain conformation was analysed, and the total number of residues.

Mol	Chain	Analysed	Rotameric	Outliers	Percentiles	
1	A	172/179 (96%)	172 (100%)	0	100	100
1	D	168/179 (94%)	167 (99%)	1 (1%)	86	68
2	B	2/3 (67%)	2 (100%)	0	100	100
2	E	2/3 (67%)	2 (100%)	0	100	100
All	All	344/364 (94%)	343 (100%)	1 (0%)	92	82

All (1) residues with a non-rotameric sidechain are listed below:

Mol	Chain	Res	Type
1	D	50	ARG

Sometimes sidechains can be flipped to improve hydrogen bonding and reduce clashes. All (1) such sidechains are listed below:

Mol	Chain	Res	Type
1	A	191	GLN

5.3.3 RNA [i](#)

There are no RNA molecules in this entry.

5.4 Non-standard residues in protein, DNA, RNA chains [i](#)

There are no non-standard protein/DNA/RNA residues in this entry.

5.5 Carbohydrates [i](#)

There are no monosaccharides in this entry.

5.6 Ligand geometry [i](#)

Of 13 ligands modelled in this entry, 2 are modelled with single atom - leaving 11 for Mogul analysis.

In the following table, the Counts columns list the number of bonds (or angles) for which Mogul statistics could be retrieved, the number of bonds (or angles) that are observed in the model and the number of bonds (or angles) that are defined in the Chemical Component Dictionary. The Link column lists molecule types, if any, to which the group is linked. The Z score for a bond length (or angle) is the number of standard deviations the observed value is removed from the expected value. A bond length (or angle) with $|Z| > 2$ is considered an outlier worth inspection. RMSZ is the root-mean-square of all Z scores of the bond lengths (or angles).

Mol	Type	Chain	Res	Link	Bond lengths			Bond angles		
					Counts	RMSZ	# Z > 2	Counts	RMSZ	# Z > 2
4	SO4	D	504	-	4,4,4	0.26	0	6,6,6	0.16	0
5	BTB	D	506	-	13,13,13	0.55	0	7,16,16	0.46	0
3	GOL	D	502	-	5,5,5	1.95	3 (60%)	5,5,5	1.31	1 (20%)
3	GOL	D	501	-	5,5,5	1.25	1 (20%)	5,5,5	0.98	0
3	GOL	A	1303	-	5,5,5	1.67	2 (40%)	5,5,5	0.85	0
4	SO4	A	1302	-	4,4,4	0.15	0	6,6,6	0.17	0
3	GOL	A	1301	-	5,5,5	1.09	0	5,5,5	1.38	1 (20%)
6	CMC	B	301	2	45,53,54	2.35	13 (28%)	55,78,80	2.46	11 (20%)
4	SO4	D	505	-	4,4,4	0.10	0	6,6,6	0.19	0
4	SO4	D	503	-	4,4,4	0.13	0	6,6,6	0.17	0
6	CMC	E	301	2	45,53,54	2.39	13 (28%)	55,78,80	2.38	11 (20%)

In the following table, the Chirals column lists the number of chiral outliers, the number of chiral centers analysed, the number of these observed in the model and the number defined in the Chemical Component Dictionary. Similar counts are reported in the Torsion and Rings columns. '-' means no outliers of that kind were identified.

Mol	Type	Chain	Res	Link	Chirals	Torsions	Rings
5	BTB	D	506	-	-	3/21/21/21	-
3	GOL	D	502	-	-	2/4/4/4	-
3	GOL	D	501	-	-	2/4/4/4	-
3	GOL	A	1303	-	-	3/4/4/4	-
3	GOL	A	1301	-	-	2/4/4/4	-
6	CMC	B	301	2	-	2/46/67/68	0/3/3/3
6	CMC	E	301	2	-	3/46/67/68	0/3/3/3

All (32) bond length outliers are listed below:

Mol	Chain	Res	Type	Atoms	Z	Observed(Å)	Ideal(Å)
6	E	301	CMC	C2B-C3B	-9.73	1.31	1.52
6	B	301	CMC	C2B-C3B	-9.17	1.32	1.52
6	E	301	CMC	C2B-C1B	4.99	1.61	1.53
6	B	301	CMC	C5P-N4P	4.97	1.44	1.33
6	B	301	CMC	O4B-C4B	4.73	1.55	1.45
6	E	301	CMC	C9P-N8P	4.65	1.43	1.33
6	B	301	CMC	C2B-C1B	4.32	1.60	1.53
6	E	301	CMC	C5P-N4P	4.21	1.42	1.33
6	B	301	CMC	C9P-N8P	4.01	1.42	1.33
6	E	301	CMC	O4B-C1B	-3.50	1.36	1.41
6	B	301	CMC	P3B-O3B	3.47	1.65	1.59
6	E	301	CMC	O4B-C4B	3.39	1.52	1.45
6	E	301	CMC	P3B-O3B	3.07	1.65	1.59
6	E	301	CMC	C5A-C4A	-3.03	1.32	1.40
6	B	301	CMC	C5A-C4A	-3.01	1.33	1.40
6	B	301	CMC	O4B-C1B	-2.62	1.37	1.41
3	D	502	GOL	O2-C2	-2.59	1.35	1.43
3	D	502	GOL	O3-C3	-2.55	1.31	1.42
6	E	301	CMC	C6A-N6A	2.55	1.43	1.34
6	B	301	CMC	C6A-N6A	2.47	1.43	1.34
3	A	1303	GOL	O2-C2	-2.47	1.36	1.43
6	B	301	CMC	C8A-N7A	-2.45	1.30	1.34
3	D	501	GOL	O2-C2	-2.45	1.36	1.43
6	B	301	CMC	C5B-C4B	-2.42	1.44	1.51
3	A	1303	GOL	C3-C2	2.36	1.61	1.51
3	D	502	GOL	O1-C1	2.31	1.52	1.42
6	E	301	CMC	C5B-C4B	-2.24	1.44	1.51
6	E	301	CMC	C6A-C5A	-2.22	1.35	1.43
6	B	301	CMC	C3P-N4P	2.19	1.51	1.46
6	E	301	CMC	O5P-C5P	-2.16	1.18	1.23
6	E	301	CMC	C8A-N7A	-2.12	1.30	1.34
6	B	301	CMC	O5P-C5P	-2.05	1.19	1.23

All (24) bond angle outliers are listed below:

Mol	Chain	Res	Type	Atoms	Z	Observed(°)	Ideal(°)
6	B	301	CMC	C5A-C6A-N6A	11.19	137.36	120.35
6	E	301	CMC	C5A-C6A-N6A	10.21	135.87	120.35
6	E	301	CMC	C1B-N9A-C4A	-7.29	113.83	126.64
6	B	301	CMC	N6A-C6A-N1A	-7.13	103.77	118.57
6	E	301	CMC	N6A-C6A-N1A	-6.29	105.52	118.57
6	B	301	CMC	C1B-N9A-C4A	-5.88	116.31	126.64
6	E	301	CMC	O6A-CCP-CBP	-4.52	103.29	110.55

Continued on next page...

Continued from previous page...

Mol	Chain	Res	Type	Atoms	Z	Observed(°)	Ideal(°)
6	B	301	CMC	N3A-C2A-N1A	-4.07	122.31	128.68
6	E	301	CMC	O4B-C4B-C3B	-3.36	97.67	104.87
6	E	301	CMC	O4B-C1B-C2B	-3.32	102.07	106.93
6	B	301	CMC	C7P-C6P-C5P	3.29	117.83	112.36
6	B	301	CMC	O4B-C1B-C2B	-3.23	102.20	106.93
6	B	301	CMC	O4B-C4B-C3B	-3.13	98.17	104.87
6	E	301	CMC	N3A-C2A-N1A	-3.11	123.82	128.68
6	B	301	CMC	C3P-C2P-S1P	-3.07	101.80	114.39
6	B	301	CMC	C3P-N4P-C5P	-2.61	117.99	122.84
6	E	301	CMC	O9P-C9P-N8P	-2.51	117.61	122.99
6	E	301	CMC	C3P-C2P-S1P	-2.50	104.16	114.39
3	A	1301	GOL	C3-C2-C1	-2.49	102.03	111.70
3	D	502	GOL	C3-C2-C1	-2.45	102.17	111.70
6	E	301	CMC	CDP-CBP-CCP	2.17	111.78	108.23
6	E	301	CMC	C6P-C5P-N4P	-2.14	112.83	116.42
6	B	301	CMC	C2P-C3P-N4P	-2.10	108.00	112.42
6	B	301	CMC	C3B-C2B-C1B	2.07	104.48	99.89

There are no chirality outliers.

All (17) torsion outliers are listed below:

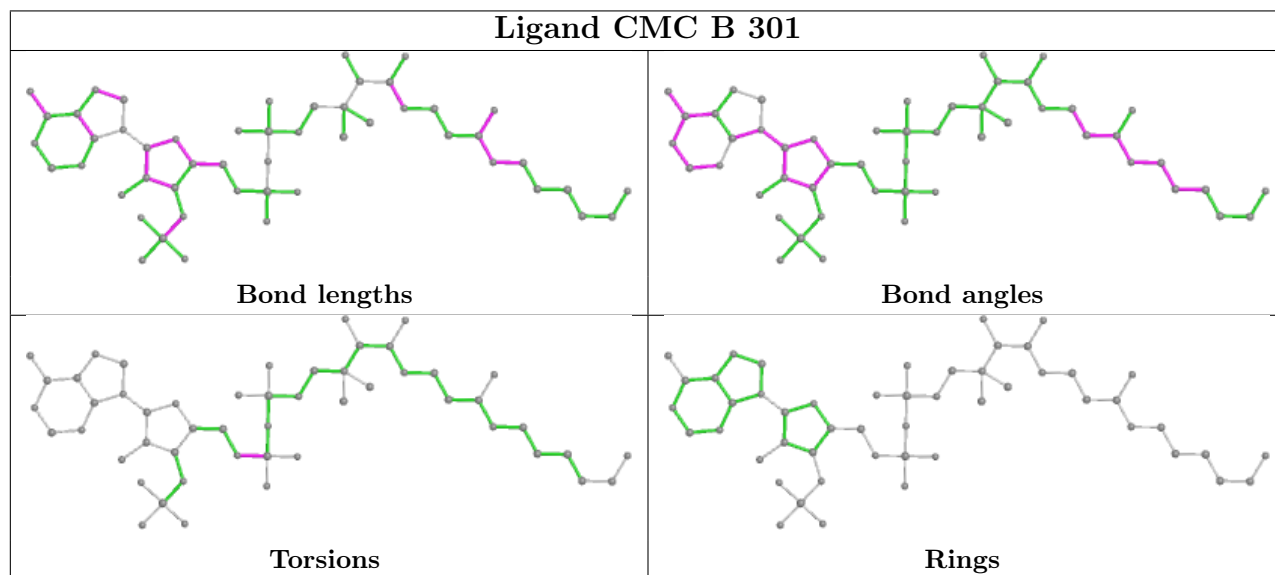
Mol	Chain	Res	Type	Atoms
3	D	502	GOL	C1-C2-C3-O3
3	A	1301	GOL	C1-C2-C3-O3
3	A	1303	GOL	O1-C1-C2-C3
5	D	506	BTB	C1-C2-C3-O3
5	D	506	BTB	C4-C2-C3-O3
5	D	506	BTB	N-C2-C3-O3
6	E	301	CMC	C5B-O5B-P1A-O2A
6	E	301	CMC	C5B-O5B-P1A-O3A
6	B	301	CMC	C5B-O5B-P1A-O2A
6	B	301	CMC	C5B-O5B-P1A-O3A
3	A	1301	GOL	O2-C2-C3-O3
3	A	1303	GOL	O1-C1-C2-O2
3	D	501	GOL	C1-C2-C3-O3
3	D	501	GOL	O2-C2-C3-O3
3	D	502	GOL	O2-C2-C3-O3
3	A	1303	GOL	C1-C2-C3-O3
6	E	301	CMC	C2B-C3B-O3B-P3B

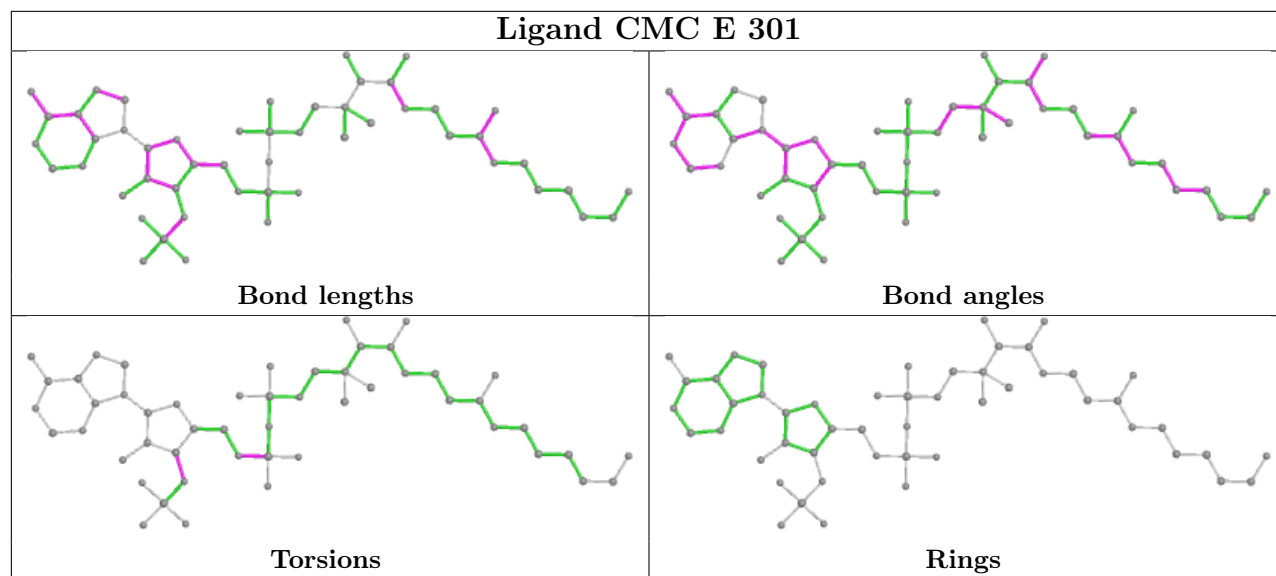
There are no ring outliers.

4 monomers are involved in 7 short contacts:

Mol	Chain	Res	Type	Clashes	Symm-Clashes
5	D	506	BTB	1	0
3	D	502	GOL	3	0
3	D	501	GOL	2	0
3	A	1301	GOL	1	0

The following is a two-dimensional graphical depiction of Mogul quality analysis of bond lengths, bond angles, torsion angles, and ring geometry for all instances of the Ligand of Interest. In addition, ligands with molecular weight > 250 and outliers as shown on the validation Tables will also be included. For torsion angles, if less than 5% of the Mogul distribution of torsion angles is within 10 degrees of the torsion angle in question, then that torsion angle is considered an outlier. Any bond that is central to one or more torsion angles identified as an outlier by Mogul will be highlighted in the graph. For rings, the root-mean-square deviation (RMSD) between the ring in question and similar rings identified by Mogul is calculated over all ring torsion angles. If the average RMSD is greater than 60 degrees and the minimal RMSD between the ring in question and any Mogul-identified rings is also greater than 60 degrees, then that ring is considered an outlier. The outliers are highlighted in purple. The color gray indicates Mogul did not find sufficient equivalents in the CSD to analyse the geometry.





5.7 Other polymers [i](#)

There are no such residues in this entry.

5.8 Polymer linkage issues [i](#)

There are no chain breaks in this entry.

6 Fit of model and data [i](#)

6.1 Protein, DNA and RNA chains [i](#)

In the following table, the column labelled ‘#RSRZ > 2’ contains the number (and percentage) of RSRZ outliers, followed by percent RSRZ outliers for the chain as percentile scores relative to all X-ray entries and entries of similar resolution. The OWAB column contains the minimum, median, 95th percentile and maximum values of the occupancy-weighted average B-factor per residue. The column labelled ‘Q < 0.9’ lists the number of (and percentage) of residues with an average occupancy less than 0.9.

Mol	Chain	Analysed	<RSRZ>	#RSRZ>2	OWAB(Å ²)	Q<0.9
1	A	204/204 (100%)	-0.05	9 (4%) 34 35	14, 22, 45, 73	0
1	D	202/204 (99%)	-0.05	10 (4%) 28 29	14, 21, 46, 73	0
2	B	5/5 (100%)	-0.27	0 100 100	16, 17, 22, 38	0
2	E	5/5 (100%)	-0.49	0 100 100	15, 16, 19, 35	0
All	All	416/418 (99%)	-0.06	19 (4%) 32 33	14, 21, 47, 73	0

All (19) RSRZ outliers are listed below:

Mol	Chain	Res	Type	RSRZ
1	D	205	CYS	8.8
1	A	205	CYS	6.8
1	A	18	GLU	5.2
1	A	21	ALA	5.1
1	A	206	GLY	5.1
1	A	204	CYS	4.9
1	A	19	ARG	4.9
1	D	208	ASP	4.7
1	D	21	ALA	4.7
1	D	204	CYS	4.7
1	D	206	GLY	4.6
1	D	207	GLU	4.2
1	A	207	GLU	4.0
1	A	17	GLU	3.6
1	A	20	ALA	3.4
1	D	17	GLU	3.1
1	D	20	ALA	2.6
1	D	24	ALA	2.2
1	D	203	GLY	2.1

6.2 Non-standard residues in protein, DNA, RNA chains [i](#)

There are no non-standard protein/DNA/RNA residues in this entry.

6.3 Carbohydrates [i](#)

There are no monosaccharides in this entry.

6.4 Ligands [i](#)

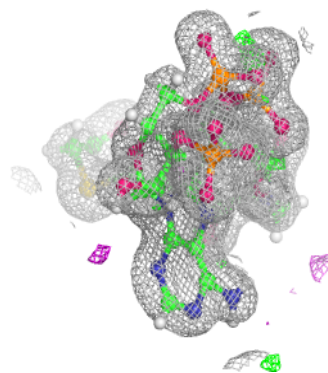
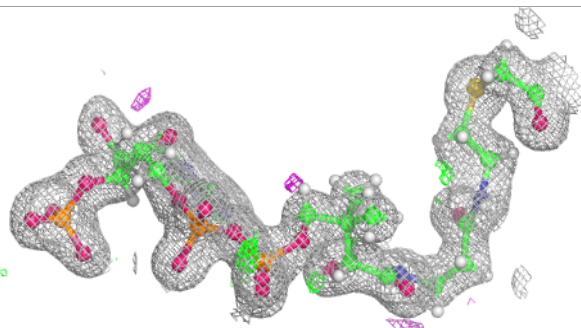
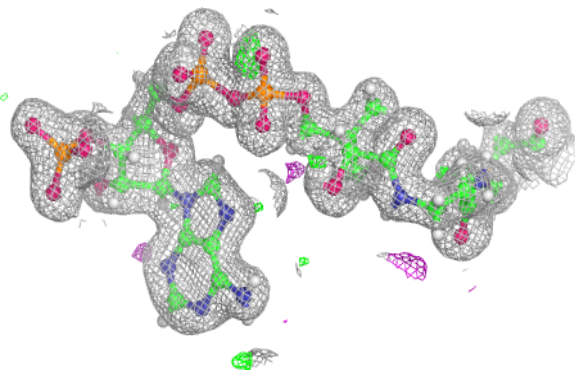
In the following table, the Atoms column lists the number of modelled atoms in the group and the number defined in the chemical component dictionary. The B-factors column lists the minimum, median, 95th percentile and maximum values of B factors of atoms in the group. The column labelled 'Q< 0.9' lists the number of atoms with occupancy less than 0.9.

Mol	Type	Chain	Res	Atoms	RSCC	RSR	B-factors(\AA^2)	Q<0.9
5	BTB	D	506	14/14	0.71	0.18	50,70,91,110	0
3	GOL	D	501	6/6	0.76	0.12	43,54,61,61	0
4	SO4	D	503	5/5	0.81	0.23	65,68,84,86	0
4	SO4	A	1302	5/5	0.82	0.25	65,67,90,102	0
7	NH2	B	302	1/1	0.83	0.16	36,36,43,43	0
3	GOL	D	502	6/6	0.84	0.34	30,38,47,60	0
3	GOL	A	1303	6/6	0.89	0.17	26,45,60,72	0
3	GOL	A	1301	6/6	0.90	0.16	23,53,69,83	0
4	SO4	D	504	5/5	0.91	0.20	50,59,74,77	0
4	SO4	D	505	5/5	0.93	0.14	56,69,77,85	0
7	NH2	E	302	1/1	0.95	0.47	37,37,45,45	0
6	CMC	E	301	51/52	0.98	0.07	16,21,32,38	0
6	CMC	B	301	51/52	0.98	0.07	16,22,32,39	0

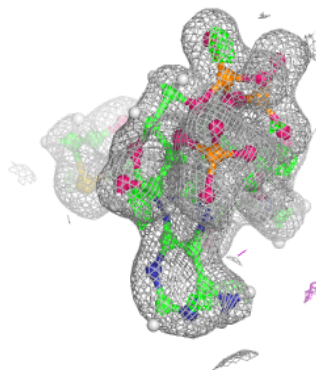
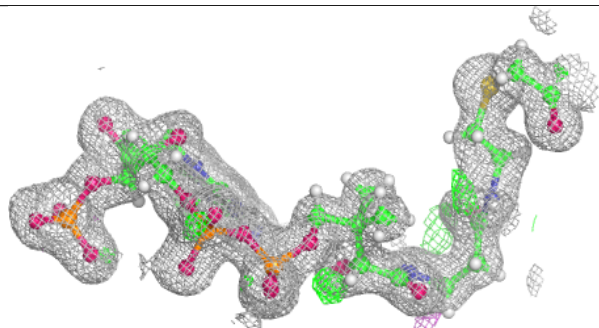
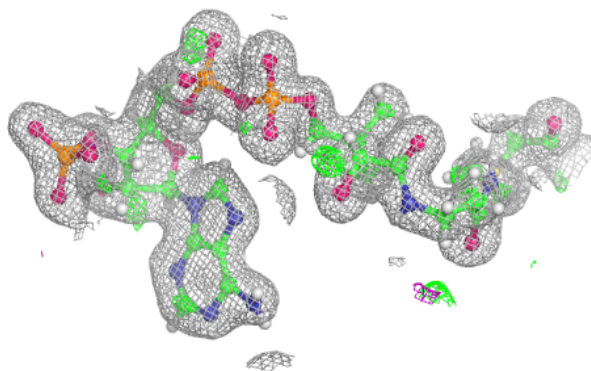
The following is a graphical depiction of the model fit to experimental electron density of all instances of the Ligand of Interest. In addition, ligands with molecular weight > 250 and outliers as shown on the geometry validation Tables will also be included. Each fit is shown from different orientation to approximate a three-dimensional view.

Electron density around CMC E 301:

$2mF_o-DF_c$ (at 0.7 rnsd) in gray
 mF_o-DF_c (at 3 rnsd) in purple (negative)
and green (positive)

**Electron density around CMC B 301:**

$2mF_o-DF_c$ (at 0.7 rnsd) in gray
 mF_o-DF_c (at 3 rnsd) in purple (negative)
and green (positive)



6.5 Other polymers [i](#)

There are no such residues in this entry.