



## Full wwPDB EM Validation Report ⓘ

May 19, 2024 – 12:17 PM EDT

PDB ID : 7MKI  
EMDB ID : EMD-23895  
Title : Cryo-EM structure of Escherichia coli RNA polymerase bound to lambda PR (-5G to C) promoter DNA  
Authors : Saecker, R.M.; Darst, S.A.; Chen, J.  
Deposited on : 2021-04-23  
Resolution : 3.50 Å(reported)

This is a Full wwPDB EM Validation Report for a publicly released PDB entry.

We welcome your comments at [validation@mail.wwpdb.org](mailto:validation@mail.wwpdb.org)

A user guide is available at

<https://www.wwpdb.org/validation/2017/EMValidationReportHelp>

with specific help available everywhere you see the ⓘ symbol.

The types of validation reports are described at

<http://www.wwpdb.org/validation/2017/FAQs#types>.

---

The following versions of software and data (see [references ⓘ](#)) were used in the production of this report:

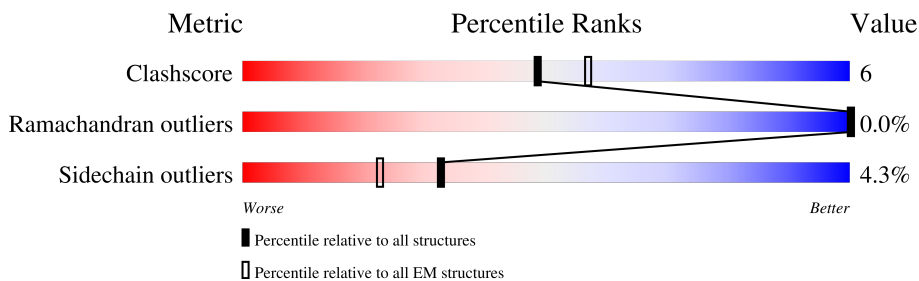
EMDB validation analysis : 0.0.1.dev92  
Mogul : 1.8.5 (274361), CSD as541be (2020)  
MolProbity : 4.02b-467  
buster-report : 1.1.7 (2018)  
Percentile statistics : 20191225.v01 (using entries in the PDB archive December 25th 2019)  
MapQ : 1.9.13  
Ideal geometry (proteins) : Engh & Huber (2001)  
Ideal geometry (DNA, RNA) : Parkinson et al. (1996)  
Validation Pipeline (wwPDB-VP) : 2.36.2

# 1 Overall quality at a glance

The following experimental techniques were used to determine the structure:  
*ELECTRON MICROSCOPY*

The reported resolution of this entry is 3.50 Å.

Percentile scores (ranging between 0-100) for global validation metrics of the entry are shown in the following graphic. The table shows the number of entries on which the scores are based.



Metric	Whole archive (#Entries)	EM structures (#Entries)
Clashscore	158937	4297
Ramachandran outliers	154571	4023
Sidechain outliers	154315	3826

The table below summarises the geometric issues observed across the polymeric chains and their fit to the map. The red, orange, yellow and green segments of the bar indicate the fraction of residues that contain outliers for  $\geq 3$ , 2, 1 and 0 types of geometric quality criteria respectively. A grey segment represents the fraction of residues that are not modelled. The numeric value for each fraction is indicated below the corresponding segment, with a dot representing fractions  $\leq 5\%$ . The upper red bar (where present) indicates the fraction of residues that have poor fit to the EM map (all-atom inclusion  $< 40\%$ ). The numeric value is given above the bar.

Mol	Chain	Length	Quality of chain
1	P	90	
2	G	329	
2	H	329	
3	I	1342	
4	J	1407	
5	K	91	
6	L	613	
7	Q	90	

## 2 Entry composition [i](#)

There are 10 unique types of molecules in this entry. The entry contains 30919 atoms, of which 0 are hydrogens and 0 are deuteriums.

In the tables below, the AltConf column contains the number of residues with at least one atom in alternate conformation and the Trace column contains the number of residues modelled with at most 2 atoms.

- Molecule 1 is a DNA chain called Nontemplate strand of lambda PR DNA promoter (-5G to C).

Mol	Chain	Residues	Atoms					AltConf	Trace
			Total	C	N	O	P		
1	P	49	998	478	175	297	48	0	0

- Molecule 2 is a protein called DNA-directed RNA polymerase subunit alpha.

Mol	Chain	Residues	Atoms					AltConf	Trace
			Total	C	N	O	S		
2	G	233	1808	1126	320	356	6	0	0
2	H	223	1714	1070	302	336	6	0	0

- Molecule 3 is a protein called DNA-directed RNA polymerase subunit beta.

Mol	Chain	Residues	Atoms					AltConf	Trace
			Total	C	N	O	S		
3	I	1340	10567	6631	1841	2052	43	0	0

- Molecule 4 is a protein called DNA-directed RNA polymerase subunit beta'.

Mol	Chain	Residues	Atoms					AltConf	Trace
			Total	C	N	O	S		
4	J	1335	10377	6519	1850	1959	49	0	0

There is a discrepancy between the modelled and reference sequences:

Chain	Residue	Modelled	Actual	Comment	Reference
J	1384	VAL	MET	conflict	UNP A0A4S1NBU2

- Molecule 5 is a protein called DNA-directed RNA polymerase subunit omega.

Mol	Chain	Residues	Atoms					AltConf	Trace
			Total	C	N	O	S		
5	K	79	627	382	118	126	1	0	0

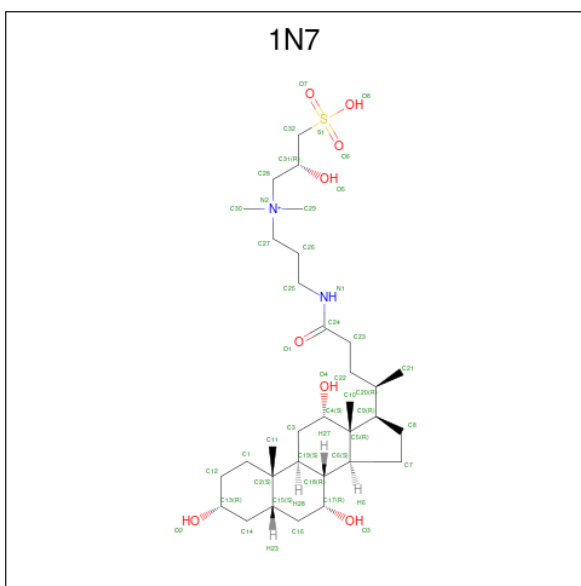
- Molecule 6 is a protein called RNA polymerase sigma factor RpoD.

Mol	Chain	Residues	Atoms					AltConf	Trace
			Total	C	N	O	S		
6	L	466	3787	2376	678	710	23	0	0

- Molecule 7 is a DNA chain called Template strand of lambda PR promoter DNA (-5C to G).

Mol	Chain	Residues	Atoms					AltConf	Trace
			Total	C	N	O	P		
7	Q	47	957	457	176	277	47	0	0

- Molecule 8 is CHAPSO (three-letter code: 1N7) (formula: C<sub>32</sub>H<sub>59</sub>N<sub>2</sub>O<sub>8</sub>S).



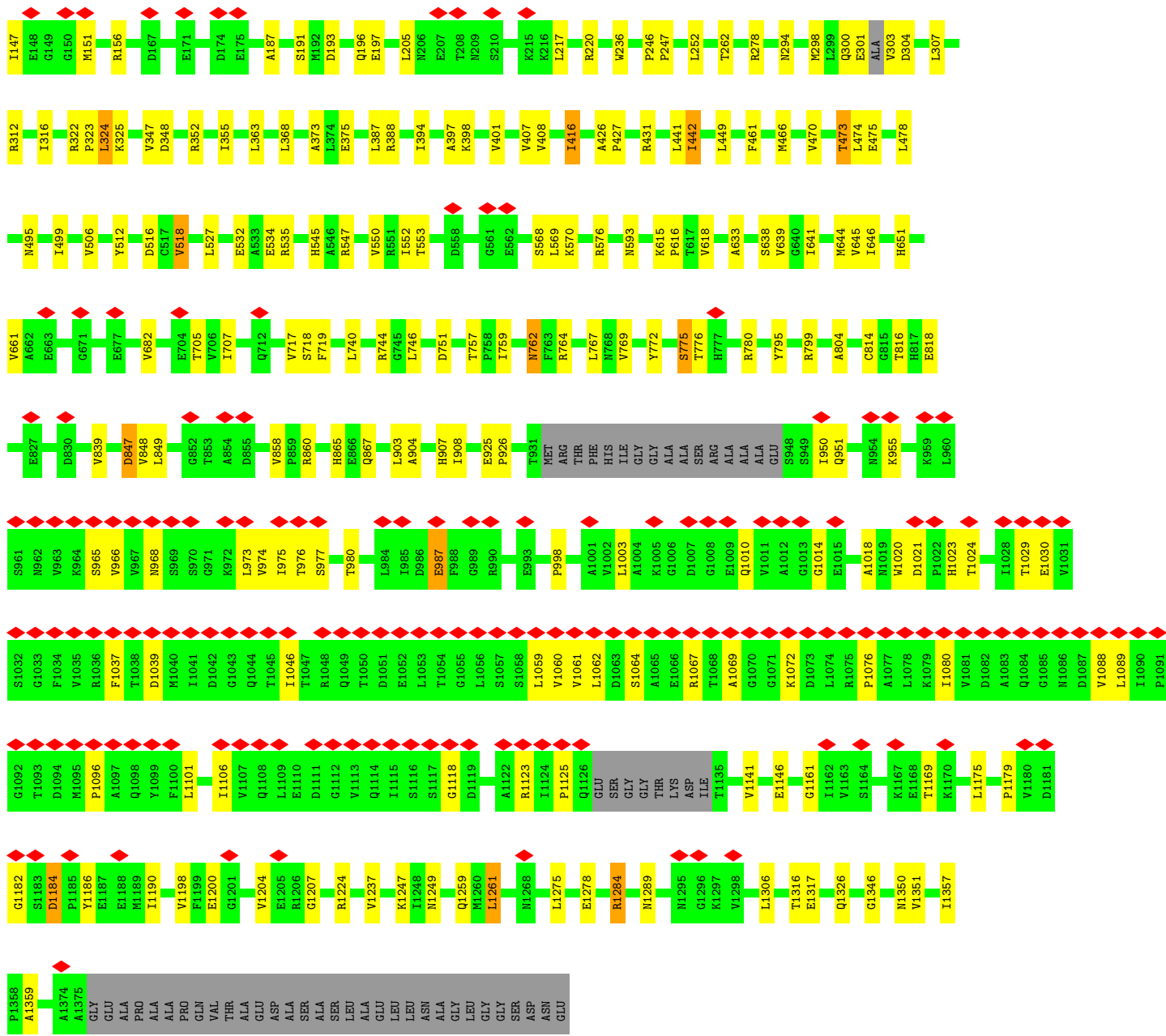
Mol	Chain	Residues	Atoms		AltConf
9	J	1	Total	Mg	0
			1	1	

- Molecule 10 is ZINC ION (three-letter code: ZN) (formula: Zn).

Mol	Chain	Residues	Atoms		AltConf
10	J	2	Total	Zn	0
			2	2	



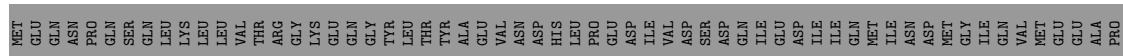




• Molecule 5: DNA-directed RNA polymerase subunit omega



• Molecule 6: RNA polymerase sigma factor RpoD







## 4 Experimental information

Property	Value	Source
EM reconstruction method	SINGLE PARTICLE	Depositor
Imposed symmetry	POINT, Not provided	
Number of particles used	353304	Depositor
Resolution determination method	FSC 0.143 CUT-OFF	Depositor
CTF correction method	PHASE FLIPPING AND AMPLITUDE CORRECTION	Depositor
Microscope	FEI TITAN KRIOS	Depositor
Voltage (kV)	300	Depositor
Electron dose ( $e^-/\text{\AA}^2$ )	75	Depositor
Minimum defocus (nm)	Not provided	
Maximum defocus (nm)	Not provided	
Magnification	Not provided	
Image detector	GATAN K2 SUMMIT (4k x 4k)	Depositor
Maximum map value	0.236	Depositor
Minimum map value	-0.158	Depositor
Average map value	0.000	Depositor
Map value standard deviation	0.008	Depositor
Recommended contour level	0.023	Depositor
Map size (Å)	263.68, 263.68, 263.68	wwPDB
Map dimensions	256, 256, 256	wwPDB
Map angles (°)	90.0, 90.0, 90.0	wwPDB
Pixel spacing (Å)	1.03, 1.03, 1.03	Depositor

## 5 Model quality i

### 5.1 Standard geometry i

Bond lengths and bond angles in the following residue types are not validated in this section: 1N7, ZN, MG

The Z score for a bond length (or angle) is the number of standard deviations the observed value is removed from the expected value. A bond length (or angle) with  $|Z| > 5$  is considered an outlier worth inspection. RMSZ is the root-mean-square of all Z scores of the bond lengths (or angles).

Mol	Chain	Bond lengths		Bond angles	
		RMSZ	# Z  >5	RMSZ	# Z  >5
1	P	0.60	0/1117	0.98	0/1722
2	G	0.32	0/1830	0.50	0/2481
2	H	0.29	0/1734	0.49	0/2349
3	I	0.36	0/10736	0.49	1/14487 (0.0%)
4	J	0.35	0/10533	0.49	0/14222
5	K	0.29	0/629	0.44	0/847
6	L	0.28	0/3837	0.44	0/5156
7	Q	0.59	0/1072	0.92	0/1647
All	All	0.37	0/31488	0.53	1/42911 (0.0%)

Chiral center outliers are detected by calculating the chiral volume of a chiral center and verifying if the center is modelled as a planar moiety or with the opposite hand. A planarity outlier is detected by checking planarity of atoms in a peptide group, atoms in a mainchain group or atoms of a sidechain that are expected to be planar.

Mol	Chain	#Chirality outliers	#Planarity outliers
4	J	0	1
5	K	0	1
6	L	0	1
All	All	0	3

There are no bond length outliers.

All (1) bond angle outliers are listed below:

Mol	Chain	Res	Type	Atoms	Z	Observed(°)	Ideal(°)
3	I	481	LEU	CA-CB-CG	5.08	127.00	115.30

There are no chirality outliers.

All (3) planarity outliers are listed below:

Mol	Chain	Res	Type	Group
4	J	1184	ASP	Peptide
5	K	32	VAL	Peptide
6	L	500	ILE	Peptide

## 5.2 Too-close contacts [i](#)

In the following table, the Non-H and H(model) columns list the number of non-hydrogen atoms and hydrogen atoms in the chain respectively. The H(added) column lists the number of hydrogen atoms added and optimized by MolProbity. The Clashes column lists the number of clashes within the asymmetric unit, whereas Symm-Clashes lists symmetry-related clashes.

Mol	Chain	Non-H	H(model)	H(added)	Clashes	Symm-Clashes
1	P	998	0	554	10	0
2	G	1808	0	1835	24	0
2	H	1714	0	1748	26	0
3	I	10567	0	10585	137	0
4	J	10377	0	10588	130	0
5	K	627	0	634	7	0
6	L	3787	0	3861	56	0
7	Q	957	0	530	7	0
8	I	54	0	74	16	0
8	J	27	0	38	8	0
9	J	1	0	0	0	0
10	J	2	0	0	0	0
All	All	30919	0	30447	379	0

The all-atom clashscore is defined as the number of clashes found per 1000 atoms (including hydrogen atoms). The all-atom clashscore for this structure is 6.

All (379) close contacts within the same asymmetric unit are listed below, sorted by their clash magnitude.

Atom-1	Atom-2	Interatomic distance (Å)	Clash overlap (Å)
8:I:1402:1N7:C3	8:I:1402:1N7:C19	1.82	1.57
8:I:1401:1N7:C3	8:I:1401:1N7:C19	1.82	1.54
8:J:1504:1N7:C3	8:J:1504:1N7:C19	1.82	1.52
3:I:528:ARG:NH2	3:I:576:SER:O	2.19	0.76
8:J:1504:1N7:C3	8:J:1504:1N7:C2	2.64	0.73
8:I:1402:1N7:C3	8:I:1402:1N7:C2	2.65	0.71
3:I:101:ARG:HD3	3:I:119:GLU:HB3	1.72	0.71
8:I:1401:1N7:C3	8:I:1401:1N7:C2	2.64	0.71
4:J:816:THR:HG22	4:J:818:GLU:H	1.55	0.71

*Continued on next page...*

*Continued from previous page...*

Atom-1	Atom-2	Interatomic distance (Å)	Clash overlap (Å)
3:I:525:THR:HG21	3:I:687:ARG:HD2	1.73	0.69
6:L:290:LEU:HB3	6:L:333:VAL:HG21	1.72	0.69
4:J:449:LEU:HD13	4:J:466:MET:HE1	1.76	0.67
2:G:6:THR:HA	2:H:150:ARG:HH22	1.59	0.67
4:J:925:GLU:HG3	4:J:926:PRO:HD3	1.77	0.67
4:J:475:GLU:OE2	5:K:28:ARG:NH2	2.28	0.67
2:G:45:ARG:NH2	3:I:1084:ASP:OD1	2.28	0.66
3:I:978:VAL:HG13	3:I:1007:LYS:HD3	1.78	0.66
4:J:1089:LEU:HD22	4:J:1096:PRO:HA	1.77	0.66
4:J:1351:VAL:HG23	4:J:1357:ILE:HD11	1.78	0.66
6:L:132:CYS:SG	6:L:257:LYS:NZ	2.62	0.65
8:I:1402:1N7:C3	8:I:1402:1N7:C18	2.69	0.65
4:J:156:ARG:NH2	4:J:191:SER:OG	2.28	0.65
4:J:552:ILE:HD11	4:J:570:LYS:HE3	1.77	0.64
4:J:762:ASN:OD1	4:J:762:ASN:N	2.30	0.64
4:J:799:ARG:NH1	4:J:1146:GLU:OE2	2.31	0.64
3:I:452:ARG:NH1	3:I:584:TYR:O	2.30	0.63
4:J:1357:ILE:HG22	4:J:1359:ALA:H	1.63	0.63
3:I:131:THR:OG1	3:I:135:THR:O	2.17	0.62
8:I:1401:1N7:C3	8:I:1401:1N7:C18	2.69	0.62
4:J:294:ASN:ND2	6:L:406:GLN:OE1	2.32	0.62
6:L:463:LEU:HA	6:L:487:MET:HE1	1.81	0.61
3:I:905:ILE:HG12	6:L:595:LEU:HD22	1.83	0.61
4:J:847:ASP:OD1	4:J:847:ASP:N	2.32	0.60
4:J:644:MET:O	4:J:764:ARG:NH1	2.35	0.60
6:L:402:LEU:HD23	6:L:405:ILE:HD11	1.84	0.60
3:I:265:LYS:O	3:I:267:ARG:NH1	2.35	0.60
4:J:1060:VAL:HG22	4:J:1106:ILE:HG12	1.84	0.60
6:L:145:LEU:HD22	6:L:225:ARG:HE	1.66	0.59
2:H:86:LYS:NZ	4:J:532:GLU:OE2	2.35	0.59
3:I:622:ASN:OD1	3:I:622:ASN:N	2.32	0.59
6:L:267:ASP:O	6:L:271:ASN:ND2	2.36	0.59
4:J:495:ASN:ND2	4:J:1247:LYS:O	2.35	0.59
3:I:735:LYS:HA	3:I:748:ILE:HG22	1.85	0.59
4:J:1061:VAL:HG11	4:J:1076:PRO:HG3	1.85	0.59
2:H:29:GLU:HB3	2:H:200:LYS:HG3	1.84	0.58
4:J:977:SER:HG	4:J:980:THR:HG1	1.49	0.58
3:I:714:VAL:O	3:I:767:GLN:NE2	2.36	0.58
3:I:1222:GLU:OE1	4:J:512:TYR:OH	2.18	0.58
2:G:207:THR:HG21	2:G:211:ILE:HG22	1.85	0.58
4:J:965:SER:HB2	4:J:973:LEU:HD11	1.84	0.58

*Continued on next page...*

*Continued from previous page...*

Atom-1	Atom-2	Interatomic distance (Å)	Clash overlap (Å)
3:I:1306:LYS:O	3:I:1310:ASP:HB2	2.03	0.58
2:G:57:THR:HG22	2:G:58:GLU:HG3	1.86	0.57
3:I:109:ALA:HB1	3:I:112:GLY:HA3	1.85	0.57
3:I:560:PRO:O	4:J:780:ARG:NH2	2.36	0.57
4:J:363:LEU:HD21	4:J:618:VAL:HG13	1.86	0.57
3:I:529:ARG:HH11	3:I:572:ILE:HG22	1.70	0.57
3:I:1072:ASN:ND2	3:I:1111:GLN:OE1	2.37	0.57
2:H:100:LEU:HD23	2:H:115:ILE:HG21	1.87	0.56
4:J:325:LYS:HD3	6:L:508:GLU:HG2	1.87	0.56
2:G:186:ASN:ND2	2:G:204:GLU:OE2	2.38	0.56
1:P:25:DG:C8	6:L:586:ARG:HD3	2.41	0.56
3:I:221:LEU:HD11	3:I:314:ASN:HB2	1.86	0.56
5:K:3:ARG:NH1	5:K:55:GLU:OE1	2.38	0.56
3:I:839:VAL:HG12	3:I:1049:ILE:HG12	1.88	0.56
4:J:1069:ALA:HA	4:J:1072:LYS:HE3	1.88	0.56
2:H:176:CYS:SG	4:J:535:ARG:NH1	2.78	0.56
4:J:278:ARG:NE	6:L:407:GLU:OE2	2.38	0.56
4:J:205:LEU:HD12	4:J:217:LEU:HB3	1.88	0.55
3:I:318:SER:OG	3:I:320:ASP:OD1	2.20	0.55
3:I:56:VAL:HG21	3:I:468:LEU:HB3	1.88	0.55
4:J:1064:SER:HA	4:J:1067:ARG:HG2	1.87	0.55
3:I:57:PHE:HD2	3:I:70:TYR:HB2	1.72	0.55
2:H:168:ILE:N	2:H:169:GLY:HA2	2.22	0.55
4:J:131:PRO:HG2	4:J:134:ASP:HB2	1.89	0.55
4:J:1179:PRO:HB2	4:J:1182:GLY:H	1.72	0.55
2:G:7:GLU:HG2	2:G:8:PHE:H	1.73	0.54
4:J:1261:LEU:HD23	4:J:1306:LEU:HD12	1.89	0.54
4:J:54:ASP:OD1	4:J:54:ASP:N	2.41	0.54
2:G:190:ALA:HB2	2:G:200:LYS:HB2	1.89	0.54
8:J:1504:1N7:C3	8:J:1504:1N7:C18	2.71	0.54
3:I:560:PRO:HB2	4:J:776:THR:HG21	1.90	0.54
3:I:1254:VAL:O	4:J:99:ARG:NH2	2.33	0.54
4:J:516:ASP:HB2	4:J:547:ARG:HD2	1.89	0.54
3:I:18:ARG:O	3:I:1156:ARG:NH1	2.41	0.54
2:H:63:GLY:HA3	2:H:71:LYS:HE3	1.89	0.53
8:J:1504:1N7:H4	8:J:1504:1N7:H17	1.90	0.53
3:I:538:LEU:HD13	3:I:543:ALA:HB2	1.91	0.53
3:I:808:ASN:H	4:J:633:ALA:HB2	1.73	0.53
3:I:810:TYR:O	3:I:1077:SER:OG	2.23	0.53
8:J:1504:1N7:C3	8:J:1504:1N7:H1	2.38	0.53
4:J:197:GLU:OE2	4:J:220:ARG:NH2	2.42	0.53

*Continued on next page...*

*Continued from previous page...*

Atom-1	Atom-2	Interatomic distance (Å)	Clash overlap (Å)
6:L:280:VAL:HG22	6:L:347:ILE:HD13	1.91	0.53
4:J:301:GLU:O	4:J:303:VAL:N	2.41	0.53
1:P:63:DG:H1'	1:P:64:DT:H5'	1.90	0.53
3:I:1024:GLU:HA	3:I:1027:LYS:HG2	1.91	0.53
3:I:745:GLU:O	3:I:974:ARG:NH1	2.42	0.53
6:L:344:LEU:HA	6:L:347:ILE:HD12	1.91	0.53
4:J:907:HIS:ND1	4:J:908:ILE:O	2.36	0.52
3:I:912:ASP:OD1	3:I:912:ASP:N	2.39	0.52
1:P:25:DG:H8	6:L:586:ARG:HD3	1.73	0.52
4:J:848:VAL:HB	4:J:858:VAL:HG22	1.92	0.52
3:I:1223:ARG:NH2	4:J:719:PHE:O	2.42	0.52
6:L:479:THR:HG23	6:L:481:GLU:H	1.74	0.52
3:I:968:GLU:OE2	3:I:1018:TYR:OH	2.28	0.52
4:J:1062:LEU:O	4:J:1067:ARG:NH2	2.42	0.51
6:L:562:ARG:NE	6:L:591:GLU:OE1	2.42	0.51
3:I:342:ASP:OD1	3:I:439:LYS:NZ	2.42	0.51
3:I:1168:GLU:HG2	3:I:1171:ARG:HH12	1.74	0.51
3:I:75:LEU:HD11	3:I:127:ILE:HD11	1.93	0.51
3:I:607:SER:OG	3:I:608:ALA:N	2.42	0.51
3:I:1005:GLU:HG3	3:I:1007:LYS:H	1.76	0.51
1:P:43:DG:H8	1:P:43:DG:H5''	1.74	0.51
3:I:306:THR:HB	3:I:308:GLU:HG2	1.93	0.51
4:J:968:ASN:HD22	4:J:974:VAL:HG13	1.75	0.51
3:I:289:VAL:HG11	3:I:319:LEU:HG	1.93	0.51
4:J:478:LEU:HD21	5:K:47:THR:HB	1.93	0.51
4:J:775:SER:O	4:J:775:SER:OG	2.20	0.51
6:L:262:VAL:HG13	6:L:265:GLN:H	1.75	0.51
4:J:1021:ASP:HB3	4:J:1024:THR:HB	1.93	0.50
3:I:1088:ASP:OD2	3:I:1092:THR:OG1	2.28	0.50
4:J:516:ASP:OD1	4:J:516:ASP:N	2.42	0.50
4:J:638:SER:OG	4:J:639:VAL:N	2.44	0.50
2:H:102:LEU:HD13	2:H:115:ILE:HG12	1.94	0.50
3:I:322:LEU:HD23	3:I:325:LEU:HD11	1.92	0.50
4:J:1275:LEU:HB3	4:J:1278:GLU:HB2	1.92	0.50
2:G:95:LYS:NZ	2:G:120:ASP:OD2	2.43	0.50
2:G:219:ARG:O	2:G:223:ILE:HG22	2.12	0.50
3:I:400:VAL:HG21	3:I:452:ARG:HD2	1.92	0.50
3:I:617:ALA:HB2	3:I:650:VAL:HG21	1.92	0.50
3:I:1341:ASP:HB3	4:J:17:PHE:HA	1.93	0.50
4:J:43:THR:OG1	6:L:449:THR:O	2.29	0.50
4:J:955:LYS:HE2	4:J:1010:GLN:HE22	1.76	0.50

*Continued on next page...*

*Continued from previous page...*

Atom-1	Atom-2	Interatomic distance (Å)	Clash overlap (Å)
1:P:51:DT:H5''	6:L:425:TYR:CE1	2.47	0.50
4:J:398:LYS:HD2	6:L:532:LEU:HD21	1.93	0.50
4:J:1207:GLY:O	4:J:1224:ARG:NH1	2.45	0.50
6:L:136:GLU:OE1	6:L:364:ARG:NH2	2.45	0.50
4:J:1198:VAL:HG12	4:J:1200:GLU:H	1.77	0.50
3:I:309:LEU:HD21	3:I:312:ALA:HB2	1.94	0.50
3:I:975:ILE:HG12	3:I:1014:LEU:HD13	1.94	0.50
6:L:511:ILE:HG21	6:L:522:PHE:HE2	1.77	0.49
4:J:368:LEU:HD23	4:J:373:ALA:HB2	1.93	0.49
4:J:576:ARG:HD3	4:J:593:ASN:HA	1.94	0.49
3:I:453:ILE:HD13	3:I:530:ILE:HD12	1.94	0.49
3:I:576:SER:OG	3:I:577:VAL:N	2.46	0.49
3:I:1341:ASP:OD1	3:I:1341:ASP:N	2.46	0.49
3:I:397:LEU:H	3:I:398:SER:HA	1.78	0.49
3:I:538:LEU:HD11	3:I:571:LEU:HD22	1.95	0.49
3:I:102:LEU:HB2	3:I:489:PRO:HG3	1.94	0.49
3:I:274:ILE:HA	3:I:277:LEU:HD12	1.94	0.49
3:I:444:ASP:O	3:I:450:ASN:ND2	2.46	0.49
3:I:697:LYS:HD2	3:I:1181:PRO:HG3	1.94	0.49
4:J:114:ILE:HD12	4:J:304:ASP:HB3	1.95	0.49
4:J:1346:GLY:O	4:J:1350:ASN:ND2	2.46	0.49
3:I:10:ARG:NH2	3:I:793:GLU:OE1	2.46	0.49
3:I:942:ASP:OD1	3:I:942:ASP:N	2.42	0.49
4:J:1184:ASP:O	4:J:1186:TYR:N	2.46	0.49
3:I:176:ILE:HD11	3:I:428:VAL:HG21	1.94	0.48
3:I:230:PHE:HE2	3:I:295:LYS:HD2	1.78	0.48
4:J:252:LEU:HD13	4:J:262:THR:HB	1.95	0.48
6:L:91:ILE:HA	6:L:92:GLY:HA2	1.68	0.48
6:L:358:VAL:O	6:L:362:ASN:ND2	2.46	0.48
3:I:1331:ARG:NH2	3:I:1337:ILE:O	2.42	0.48
6:L:277:MET:SD	6:L:362:ASN:ND2	2.86	0.48
3:I:727:VAL:HG21	3:I:771:VAL:HG23	1.96	0.48
4:J:1080:ILE:HG22	4:J:1088:VAL:HB	1.95	0.48
2:G:120:ASP:N	2:G:120:ASP:OD1	2.45	0.48
4:J:973:LEU:HD23	4:J:1003:LEU:HD12	1.96	0.48
6:L:143:TYR:HD2	6:L:265:GLN:HE21	1.61	0.48
3:I:972:PHE:HD2	3:I:994:ARG:HH21	1.60	0.48
4:J:998:PRO:HG2	4:J:1020:TRP:NE1	2.29	0.48
2:H:182:ARG:NH1	4:J:534:GLU:OE1	2.45	0.48
8:I:1402:1N7:C19	8:I:1402:1N7:C4	2.85	0.47
4:J:975:ILE:HD13	4:J:980:THR:HG21	1.96	0.47

*Continued on next page...*



*Continued from previous page...*

Atom-1	Atom-2	Interatomic distance (Å)	Clash overlap (Å)
7:Q:48:DC:H2''	7:Q:49:DA:C8	2.50	0.47
7:Q:49:DA:H2''	7:Q:50:DG:C8	2.49	0.47
8:I:1401:1N7:C3	8:I:1401:1N7:H1	2.45	0.47
4:J:1076:PRO:HG2	4:J:1101:LEU:HB2	1.96	0.47
3:I:249:GLU:OE1	3:I:291:TYR:OH	2.26	0.47
3:I:710:VAL:HG13	3:I:717:VAL:HG11	1.96	0.47
1:P:63:DG:C8	3:I:542:ARG:HG2	2.50	0.47
2:G:226:GLU:OE2	2:H:10:LYS:NZ	2.40	0.47
3:I:802:VAL:HG21	3:I:1098:LEU:HD22	1.97	0.47
4:J:473:THR:OG1	4:J:474:LEU:N	2.47	0.47
6:L:572:THR:OG1	7:Q:61:DG:OP2	2.33	0.47
2:G:11:PRO:HA	2:G:30:PRO:HD2	1.97	0.47
2:G:102:LEU:HD21	2:G:110:VAL:HG11	1.96	0.47
3:I:463:GLN:HG3	3:I:505:PHE:HB2	1.97	0.47
6:L:511:ILE:HG22	6:L:517:SER:HB3	1.97	0.47
2:G:234:LEU:HD23	2:G:234:LEU:HA	1.83	0.47
3:I:901:LEU:HD22	6:L:565:ILE:HD11	1.96	0.47
3:I:937:ASP:OD1	6:L:495:ARG:NH2	2.48	0.47
3:I:985:GLU:HB3	3:I:988:LYS:HB2	1.97	0.47
3:I:813:GLU:HB2	4:J:461:PHE:CD2	2.50	0.46
3:I:161:LYS:HE3	3:I:161:LYS:HB3	1.74	0.46
5:K:26:ARG:HG3	5:K:30:MET:HE3	1.96	0.46
6:L:102:MET:HA	6:L:105:MET:HG3	1.96	0.46
6:L:511:ILE:HG21	6:L:522:PHE:CE2	2.50	0.46
3:I:26:TYR:HE1	3:I:32:LEU:HD12	1.80	0.46
3:I:1065:LYS:HE2	3:I:1235:LEU:HD12	1.97	0.46
3:I:720:ARG:HE	3:I:736:VAL:HG11	1.81	0.46
8:I:1401:1N7:C3	8:I:1401:1N7:C1	2.94	0.46
4:J:804:ALA:HA	4:J:1259:GLN:HE21	1.80	0.46
4:J:1141:VAL:HG22	4:J:1237:VAL:HG23	1.98	0.46
8:J:1504:1N7:C3	8:J:1504:1N7:C1	2.93	0.46
3:I:230:PHE:HB2	3:I:333:ILE:HB	1.96	0.46
3:I:373:GLY:O	6:L:103:ARG:NH1	2.48	0.46
3:I:958:LYS:O	3:I:962:GLU:HG2	2.16	0.46
4:J:53:ARG:HG3	4:J:60:ARG:HD3	1.97	0.46
3:I:870:ILE:HG23	3:I:884:VAL:HG22	1.97	0.46
3:I:1222:GLU:H	3:I:1222:GLU:HG3	1.49	0.46
4:J:951:GLN:NE2	4:J:1014:GLY:O	2.49	0.46
2:H:78:ILE:HD12	2:H:78:ILE:HA	1.85	0.46
8:I:1402:1N7:C3	8:I:1402:1N7:H1	2.46	0.46
2:H:100:LEU:HB2	2:H:144:ILE:HG13	1.98	0.46

*Continued on next page...*

*Continued from previous page...*

Atom-1	Atom-2	Interatomic distance (Å)	Clash overlap (Å)
3:I:104:ILE:HD11	3:I:116:ASP:HB2	1.97	0.46
3:I:1304:MET:O	3:I:1308:ILE:HG12	2.16	0.46
5:K:3:ARG:HB2	5:K:48:VAL:HG13	1.97	0.46
2:G:228:LEU:HD21	2:H:224:LEU:HB3	1.98	0.45
4:J:744:ARG:HE	4:J:744:ARG:HB2	1.48	0.45
4:J:950:ILE:HD12	4:J:1018:ALA:HB3	1.96	0.45
3:I:1069:ARG:NH2	3:I:1114:GLU:OE2	2.46	0.45
4:J:442:ILE:HD13	4:J:442:ILE:HA	1.75	0.45
4:J:744:ARG:HG3	4:J:759:ILE:HG13	1.97	0.45
3:I:533:LEU:HD21	3:I:571:LEU:HD13	1.98	0.45
2:G:91:ARG:NH1	2:G:210:THR:O	2.49	0.45
4:J:1024:THR:HG23	4:J:1123:ARG:HB3	1.97	0.45
4:J:298:MET:SD	6:L:402:LEU:HB3	2.56	0.45
2:H:78:ILE:HD12	2:H:81:ILE:HD12	1.99	0.45
3:I:75:LEU:HD21	3:I:127:ILE:HD11	1.99	0.45
3:I:1309:VAL:HG11	4:J:394:ILE:HD12	1.99	0.45
3:I:992:LEU:HD23	3:I:992:LEU:H	1.82	0.45
8:I:1402:1N7:H36	8:I:1402:1N7:H30	1.65	0.45
6:L:122:ARG:NH2	6:L:378:GLU:OE2	2.37	0.45
6:L:452:ILE:HG13	6:L:457:ILE:HG13	1.98	0.45
7:Q:57:DA:H2 <sup>''</sup>	7:Q:58:DA:C8	2.52	0.45
3:I:241:LEU:HD11	3:I:246:LEU:HG	1.98	0.44
3:I:444:ASP:OD1	3:I:444:ASP:N	2.45	0.44
4:J:394:ILE:HG23	6:L:536:THR:HG22	1.98	0.44
4:J:903:LEU:HD21	4:J:1249:ASN:HD22	1.80	0.44
6:L:359:LYS:HA	6:L:362:ASN:HD21	1.82	0.44
1:P:43:DG:H5 <sup>''</sup>	1:P:43:DG:C8	2.51	0.44
3:I:211:ARG:HH22	3:I:217:THR:HG1	1.63	0.44
3:I:687:ARG:HE	3:I:687:ARG:HB2	1.43	0.44
3:I:806:PRO:O	4:J:633:ALA:HA	2.18	0.44
4:J:518:VAL:HG12	4:J:707:ILE:HG23	2.00	0.44
4:J:426:ALA:HB3	4:J:427:PRO:HD3	1.99	0.44
6:L:463:LEU:HD11	6:L:494:ILE:HG23	1.99	0.44
2:H:62:ASP:OD1	2:H:62:ASP:N	2.47	0.44
2:G:197:ASP:OD1	2:G:197:ASP:N	2.49	0.44
4:J:661:VAL:HG23	4:J:682:VAL:HG22	1.99	0.44
6:L:257:LYS:HB3	6:L:257:LYS:HE2	1.75	0.44
4:J:26:SER:HB3	4:J:236:TRP:CZ2	2.53	0.44
4:J:966:VAL:HG21	4:J:1030:GLU:HG3	2.00	0.44
7:Q:54:DT:H2 <sup>''</sup>	7:Q:55:DA:C8	2.52	0.44
3:I:277:LEU:HD23	3:I:282:VAL:HG21	2.00	0.44

*Continued on next page...*

*Continued from previous page...*

Atom-1	Atom-2	Interatomic distance (Å)	Clash overlap (Å)
3:I:819:SER:HB2	3:I:1085:MET:HG3	2.00	0.44
8:I:1402:1N7:H4	8:I:1402:1N7:H17	2.00	0.44
6:L:587:ILE:HD13	6:L:587:ILE:HA	1.82	0.44
2:G:31:LEU:HD13	2:G:36:GLY:HA2	2.00	0.44
3:I:745:GLU:HA	3:I:1017:GLN:HG3	2.00	0.44
4:J:795:TYR:OH	4:J:1326:GLN:OE1	2.26	0.44
4:J:67:ASP:HB3	4:J:95:THR:H	1.83	0.43
6:L:314:THR:HA	6:L:318:ALA:HB3	2.00	0.43
3:I:976:ARG:HG2	3:I:989:LEU:HD23	2.00	0.43
1:P:30:DC:H2'	1:P:31:DT:H71	2.00	0.43
2:G:60:GLU:HG2	2:G:170:ARG:HG2	2.00	0.43
7:Q:50:DG:H2''	7:Q:51:DA:C8	2.53	0.43
1:P:50:DA:H61	6:L:420:GLU:HB2	1.82	0.43
4:J:193:ASP:HB3	4:J:196:GLN:HG2	1.99	0.43
3:I:852:ALA:HB2	3:I:869:GLY:HA2	2.00	0.43
4:J:568:SER:OG	4:J:569:LEU:N	2.50	0.43
3:I:1185:PRO:HB2	3:I:1188:ASP:HB2	1.99	0.43
4:J:499:ILE:HD12	4:J:499:ILE:HA	1.91	0.43
6:L:303:ILE:O	6:L:307:THR:OG1	2.36	0.43
6:L:572:THR:HG23	6:L:575:GLU:H	1.83	0.43
2:G:191:ARG:HD3	2:G:191:ARG:HA	1.72	0.43
2:H:102:LEU:HB3	2:H:142:MET:HG2	2.00	0.43
4:J:553:THR:O	4:J:553:THR:OG1	2.34	0.43
2:H:51:MET:N	2:H:150:ARG:O	2.40	0.43
2:H:58:GLU:OE2	2:H:170:ARG:NE	2.52	0.43
3:I:231:GLU:O	3:I:238:GLN:N	2.52	0.43
3:I:811:ASN:HA	3:I:815:SER:HB2	2.00	0.43
4:J:48:THR:O	4:J:50:LYS:N	2.49	0.43
4:J:322:ARG:HG2	4:J:323:PRO:HD2	2.01	0.43
4:J:387:LEU:HD23	4:J:388:ARG:HG2	2.01	0.43
3:I:249:GLU:HB2	3:I:269:ILE:HD13	2.00	0.43
3:I:1294:LYS:NZ	4:J:470:VAL:O	2.48	0.43
8:I:1401:1N7:H36	8:I:1401:1N7:H30	1.66	0.43
3:I:957:LYS:HG3	3:I:1029:LEU:HD11	2.01	0.42
2:G:42:ALA:O	2:G:46:ILE:HG12	2.19	0.42
3:I:247:ARG:HH12	3:I:271:ALA:HA	1.83	0.42
2:G:7:GLU:CD	2:G:7:GLU:H	2.23	0.42
3:I:53:PHE:CD1	3:I:468:LEU:HD11	2.54	0.42
3:I:660:VAL:HG11	4:J:769:VAL:HG13	2.01	0.42
3:I:1256:GLN:HB3	3:I:1301:ARG:HH22	1.85	0.42
6:L:102:MET:HA	6:L:105:MET:CG	2.49	0.42

*Continued on next page...*

*Continued from previous page...*

Atom-1	Atom-2	Interatomic distance (Å)	Clash overlap (Å)
3:I:672:GLU:OE1	3:I:672:GLU:N	2.37	0.42
2:G:114:ASP:N	2:G:114:ASP:OD1	2.52	0.42
3:I:179:TYR:HB2	3:I:397:LEU:O	2.20	0.42
4:J:646:ILE:HD11	4:J:764:ARG:HG2	2.02	0.42
3:I:1107:MET:HG2	4:J:740:LEU:HD11	2.02	0.42
8:I:1402:1N7:C3	8:I:1402:1N7:C1	2.98	0.42
4:J:1046:ILE:HD12	4:J:1059:LEU:HD22	2.00	0.42
6:L:120:ALA:O	6:L:124:GLU:HG2	2.20	0.42
3:I:1287:LEU:O	3:I:1291:LEU:HG	2.20	0.42
4:J:147:ILE:HD13	4:J:187:ALA:HB3	2.01	0.42
2:H:60:GLU:HG3	2:H:170:ARG:HB3	2.00	0.42
2:H:82:LEU:HD22	2:H:173:VAL:HG22	2.02	0.42
8:I:1401:1N7:H4	8:I:1401:1N7:H17	2.02	0.42
3:I:591:TYR:OH	3:I:637:ARG:NH2	2.52	0.42
3:I:957:LYS:HE3	3:I:957:LYS:HB2	1.68	0.42
3:I:1004:ASP:OD1	3:I:1004:ASP:N	2.51	0.42
4:J:527:LEU:HB2	4:J:550:VAL:HG12	2.01	0.42
3:I:517:GLN:HB3	3:I:759:SER:HB2	2.01	0.41
4:J:74:LYS:HE2	4:J:74:LYS:HB2	1.86	0.41
4:J:316:ILE:HG13	4:J:324:LEU:HD11	2.01	0.41
4:J:1284:ARG:NH1	4:J:1317:GLU:OE2	2.53	0.41
8:J:1504:1N7:H13	8:J:1504:1N7:H27	1.80	0.41
6:L:220:LYS:HB3	6:L:220:LYS:HE3	1.88	0.41
2:H:135:ASP:OD1	2:H:135:ASP:N	2.50	0.41
3:I:215:TYR:HE1	3:I:426:ILE:HD11	1.84	0.41
3:I:322:LEU:O	3:I:326:SER:OG	2.25	0.41
3:I:953:LEU:HD22	3:I:1033:ARG:HG2	2.02	0.41
4:J:71:LEU:HB2	4:J:90:VAL:HG21	2.02	0.41
4:J:397:ALA:O	4:J:401:VAL:HG13	2.19	0.41
4:J:615:LYS:HB2	4:J:616:PRO:HD3	2.03	0.41
4:J:865:HIS:CE1	4:J:867:GLN:HB2	2.55	0.41
3:I:960:LEU:HD13	3:I:960:LEU:HA	1.89	0.41
4:J:300:GLN:NE2	4:J:304:ASP:OD2	2.49	0.41
5:K:40:PRO:O	5:K:52:ARG:NH2	2.42	0.41
4:J:113:HIS:CE1	4:J:307:LEU:HD13	2.56	0.41
3:I:1123:GLY:HA3	3:I:1204:LEU:HD11	2.03	0.41
4:J:246:PRO:HA	4:J:247:PRO:HD3	1.95	0.41
4:J:968:ASN:HA	4:J:1118:GLY:HA3	2.01	0.41
6:L:93:ARG:H	6:L:93:ARG:HG2	1.58	0.41
2:H:97:GLU:HG2	2:H:147:GLN:HG3	2.02	0.41
3:I:402:ARG:HD2	3:I:402:ARG:HA	1.83	0.41

*Continued on next page...*

*Continued from previous page...*

Atom-1	Atom-2	Interatomic distance (Å)	Clash overlap (Å)
3:I:1293:VAL:HG21	3:I:1315:MET:HB2	2.02	0.41
6:L:276:MET:O	6:L:280:VAL:HG23	2.21	0.41
2:H:51:MET:HA	2:H:52:PRO:HD3	1.96	0.41
4:J:347:VAL:HG12	4:J:348:ASP:O	2.20	0.41
4:J:416:ILE:HG13	4:J:441:LEU:HD21	2.02	0.41
5:K:15:ASN:C	5:K:17:PHE:H	2.23	0.41
2:H:46:ILE:HD11	2:H:224:LEU:HD13	2.02	0.41
3:I:226:GLU:OE2	3:I:343:HIS:NE2	2.44	0.41
4:J:79:LYS:HB2	4:J:79:LYS:HE3	1.88	0.41
4:J:416:ILE:HA	4:J:416:ILE:HD13	1.79	0.41
4:J:1023:HIS:O	4:J:1125:PRO:HA	2.21	0.41
6:L:161:LEU:HG	6:L:162:ILE:HG23	2.03	0.41
1:P:51:DT:H5''	6:L:425:TYR:HE1	1.86	0.41
3:I:159:SER:OG	3:I:160:ASP:N	2.54	0.41
3:I:1332:SER:O	3:I:1332:SER:OG	2.38	0.41
6:L:124:GLU:HA	6:L:127:ILE:HG12	2.03	0.41
6:L:127:ILE:HA	6:L:130:VAL:HG12	2.02	0.41
3:I:420:LEU:HD23	3:I:420:LEU:HA	1.92	0.40
8:I:1401:1N7:H14	8:I:1401:1N7:H29	1.80	0.40
4:J:355:ILE:HG21	4:J:466:MET:HE2	2.02	0.40
6:L:132:CYS:HA	6:L:257:LYS:HD2	2.02	0.40
2:H:100:LEU:HD11	2:H:121:VAL:HG21	2.03	0.40
4:J:814:CYS:SG	4:J:816:THR:OG1	2.73	0.40
4:J:1161:GLY:HA3	4:J:1179:PRO:HA	2.03	0.40
6:L:415:ALA:HB2	6:L:434:TRP:HB2	2.03	0.40
3:I:883:LEU:HD13	3:I:1052:VAL:HG11	2.04	0.40
3:I:1247:SER:HB3	4:J:375:GLU:O	2.21	0.40
4:J:705:THR:HG21	4:J:718:SER:HA	2.03	0.40
4:J:767:LEU:HD12	4:J:772:TYR:HD1	1.87	0.40
7:Q:41:DT:O2	7:Q:41:DT:H2'	2.21	0.40
3:I:817:LEU:HD12	3:I:1078:LYS:HB3	2.03	0.40
3:I:1013:GLN:O	3:I:1017:GLN:HG2	2.20	0.40
4:J:641:ILE:HD12	4:J:641:ILE:HA	1.95	0.40
8:J:1504:1N7:H30	8:J:1504:1N7:H36	1.74	0.40
2:G:231:PHE:CZ	2:H:28:LEU:HD11	2.57	0.40
3:I:103:VAL:HB	3:I:114:VAL:HG11	2.03	0.40
3:I:179:TYR:OH	3:I:458:GLU:OE2	2.31	0.40
3:I:508:SER:O	3:I:508:SER:OG	2.37	0.40
3:I:781:ASP:OD1	3:I:782:VAL:N	2.54	0.40
3:I:1331:ARG:HA	3:I:1335:ILE:O	2.21	0.40
4:J:987:GLU:H	4:J:987:GLU:HG3	1.57	0.40

*Continued on next page...*

Continued from previous page...

Atom-1	Atom-2	Interatomic distance (Å)	Clash overlap (Å)
4:J:1175:LEU:HB2	4:J:1190:ILE:HD11	2.03	0.40

There are no symmetry-related clashes.

## 5.3 Torsion angles [i](#)

### 5.3.1 Protein backbone [i](#)

In the following table, the Percentiles column shows the percent Ramachandran outliers of the chain as a percentile score with respect to all PDB entries followed by that with respect to all EM entries.

The Analysed column shows the number of residues for which the backbone conformation was analysed, and the total number of residues.

Mol	Chain	Analysed	Favoured	Allowed	Outliers	Percentiles	
2	G	231/329 (70%)	207 (90%)	24 (10%)	0	100	100
2	H	219/329 (67%)	208 (95%)	11 (5%)	0	100	100
3	I	1338/1342 (100%)	1233 (92%)	105 (8%)	0	100	100
4	J	1327/1407 (94%)	1236 (93%)	90 (7%)	1 (0%)	51	84
5	K	77/91 (85%)	69 (90%)	8 (10%)	0	100	100
6	L	460/613 (75%)	437 (95%)	23 (5%)	0	100	100
All	All	3652/4111 (89%)	3390 (93%)	261 (7%)	1 (0%)	100	100

All (1) Ramachandran outliers are listed below:

Mol	Chain	Res	Type
4	J	904	ALA

### 5.3.2 Protein sidechains [i](#)

In the following table, the Percentiles column shows the percent sidechain outliers of the chain as a percentile score with respect to all PDB entries followed by that with respect to all EM entries.

The Analysed column shows the number of residues for which the sidechain conformation was analysed, and the total number of residues.

Mol	Chain	Analysed	Rotameric	Outliers	Percentiles	
2	G	201/286 (70%)	187 (93%)	14 (7%)	15	46
2	H	190/286 (66%)	173 (91%)	17 (9%)	9	37
3	I	1155/1157 (100%)	1106 (96%)	49 (4%)	30	63
4	J	1118/1168 (96%)	1077 (96%)	41 (4%)	34	65
5	K	67/75 (89%)	65 (97%)	2 (3%)	41	71
6	L	411/540 (76%)	398 (97%)	13 (3%)	39	69
All	All	3142/3512 (90%)	3006 (96%)	136 (4%)	33	62

All (136) residues with a non-rotameric sidechain are listed below:

Mol	Chain	Res	Type
2	G	7	GLU
2	G	8	PHE
2	G	19	VAL
2	G	70	THR
2	G	90	VAL
2	G	120	ASP
2	G	129	VAL
2	G	173	VAL
2	G	177	TYR
2	G	180	VAL
2	G	207	THR
2	G	223	ILE
2	G	233	ASP
2	G	236	ASP
2	H	6	THR
2	H	13	LEU
2	H	14	VAL
2	H	16	ILE
2	H	27	THR
2	H	28	LEU
2	H	38	THR
2	H	64	VAL
2	H	65	LEU
2	H	79	LEU
2	H	121	VAL
2	H	134	THR
2	H	146	VAL
2	H	158	ARG
2	H	183	ILE
2	H	197	ASP

*Continued on next page...*

*Continued from previous page...*

<b>Mol</b>	<b>Chain</b>	<b>Res</b>	<b>Type</b>
2	H	207	THR
3	I	15	PHE
3	I	21	VAL
3	I	30	ILE
3	I	122	VAL
3	I	131	THR
3	I	147	SER
3	I	150	HIS
3	I	170	VAL
3	I	216	THR
3	I	246	LEU
3	I	300	ASP
3	I	343	HIS
3	I	405	PHE
3	I	448	LEU
3	I	471	VAL
3	I	514	PHE
3	I	515	MET
3	I	516	ASP
3	I	539	THR
3	I	550	VAL
3	I	554	HIS
3	I	600	THR
3	I	622	ASN
3	I	623	LEU
3	I	632	ASP
3	I	635	THR
3	I	655	VAL
3	I	702	THR
3	I	764	CYS
3	I	799	ASN
3	I	800	MET
3	I	802	VAL
3	I	829	THR
3	I	842	ASP
3	I	935	THR
3	I	992	LEU
3	I	1002	LEU
3	I	1040	ASP
3	I	1083	GLU
3	I	1088	ASP
3	I	1098	LEU

*Continued on next page...*



*Continued from previous page...*

<b>Mol</b>	<b>Chain</b>	<b>Res</b>	<b>Type</b>
3	I	1137	GLU
3	I	1188	ASP
3	I	1203	ASP
3	I	1206	THR
3	I	1222	GLU
3	I	1225	VAL
3	I	1227	VAL
3	I	1264	GLN
4	J	34	SER
4	J	83	VAL
4	J	92	VAL
4	J	93	THR
4	J	133	ARG
4	J	151	MET
4	J	312	ARG
4	J	324	LEU
4	J	352	ARG
4	J	407	VAL
4	J	408	VAL
4	J	416	ILE
4	J	431	ARG
4	J	442	ILE
4	J	473	THR
4	J	506	VAL
4	J	518	VAL
4	J	545	HIS
4	J	645	VAL
4	J	651	HIS
4	J	717	VAL
4	J	746	LEU
4	J	751	ASP
4	J	757	THR
4	J	762	ASN
4	J	775	SER
4	J	839	VAL
4	J	847	ASP
4	J	849	LEU
4	J	860	ARG
4	J	976	THR
4	J	987	GLU
4	J	1029	THR
4	J	1037	PHE

*Continued on next page...*

*Continued from previous page...*

Mol	Chain	Res	Type
4	J	1039	ASP
4	J	1169	THR
4	J	1204	VAL
4	J	1261	LEU
4	J	1284	ARG
4	J	1289	ASN
4	J	1316	THR
5	K	21	LEU
5	K	53	GLU
6	L	137	TYR
6	L	149	ASP
6	L	166	VAL
6	L	247	GLU
6	L	266	PHE
6	L	417	ASP
6	L	436	ARG
6	L	442	SER
6	L	463	LEU
6	L	519	LEU
6	L	558	VAL
6	L	559	LEU
6	L	579	GLN

Sometimes sidechains can be flipped to improve hydrogen bonding and reduce clashes. All (7) such sidechains are listed below:

Mol	Chain	Res	Type
3	I	447	HIS
4	J	294	ASN
4	J	1010	GLN
4	J	1259	GLN
6	L	271	ASN
6	L	362	ASN
6	L	406	GLN

### 5.3.3 RNA

There are no RNA molecules in this entry.

## 5.4 Non-standard residues in protein, DNA, RNA chains [i](#)

There are no non-standard protein/DNA/RNA residues in this entry.

## 5.5 Carbohydrates [i](#)

There are no monosaccharides in this entry.

## 5.6 Ligand geometry [i](#)

Of 6 ligands modelled in this entry, 3 are monoatomic - leaving 3 for Mogul analysis.

In the following table, the Counts columns list the number of bonds (or angles) for which Mogul statistics could be retrieved, the number of bonds (or angles) that are observed in the model and the number of bonds (or angles) that are defined in the Chemical Component Dictionary. The Link column lists molecule types, if any, to which the group is linked. The Z score for a bond length (or angle) is the number of standard deviations the observed value is removed from the expected value. A bond length (or angle) with  $|Z| > 2$  is considered an outlier worth inspection. RMSZ is the root-mean-square of all Z scores of the bond lengths (or angles).

Mol	Type	Chain	Res	Link	Bond lengths			Bond angles		
					Counts	RMSZ	# Z  > 2	Counts	RMSZ	# Z  > 2
8	1N7	I	1401	-	30,30,46	5.01	16 (53%)	47,48,72	2.40	13 (27%)
8	1N7	J	1504	-	30,30,46	5.09	14 (46%)	47,48,72	2.47	11 (23%)
8	1N7	I	1402	-	30,30,46	5.03	14 (46%)	47,48,72	2.29	14 (29%)

In the following table, the Chirals column lists the number of chiral outliers, the number of chiral centers analysed, the number of these observed in the model and the number defined in the Chemical Component Dictionary. Similar counts are reported in the Torsion and Rings columns. '-' means no outliers of that kind were identified.

Mol	Type	Chain	Res	Link	Chirals	Torsions	Rings
8	1N7	I	1401	-	-	7/7/72/92	0/4/4/4
8	1N7	J	1504	-	-	4/7/72/92	0/4/4/4
8	1N7	I	1402	-	-	6/7/72/92	0/4/4/4

All (44) bond length outliers are listed below:

Mol	Chain	Res	Type	Atoms	Z	Observed(Å)	Ideal(Å)
8	J	1504	1N7	C3-C19	17.52	1.82	1.53
8	I	1401	1N7	C3-C19	17.35	1.82	1.53
8	I	1402	1N7	C3-C19	17.35	1.82	1.53

*Continued on next page...*

Continued from previous page...

Mol	Chain	Res	Type	Atoms	Z	Observed(Å)	Ideal(Å)
8	J	1504	1N7	C3-C4	12.30	1.74	1.53
8	I	1402	1N7	C3-C4	11.66	1.73	1.53
8	I	1401	1N7	C3-C4	11.62	1.72	1.53
8	I	1402	1N7	C5-C4	-9.30	1.40	1.54
8	I	1401	1N7	C5-C4	-9.15	1.40	1.54
8	J	1504	1N7	C5-C4	-8.82	1.40	1.54
8	I	1402	1N7	C2-C19	-8.60	1.40	1.56
8	I	1401	1N7	C2-C19	-8.59	1.40	1.56
8	J	1504	1N7	C2-C19	-8.58	1.40	1.56
8	J	1504	1N7	C8-C7	6.21	1.71	1.54
8	I	1402	1N7	C8-C7	6.10	1.70	1.54
8	I	1401	1N7	C8-C7	6.06	1.70	1.54
8	I	1401	1N7	C5-C6	-4.61	1.47	1.55
8	J	1504	1N7	C5-C6	-4.57	1.47	1.55
8	I	1402	1N7	C5-C6	-4.56	1.47	1.55
8	I	1402	1N7	C18-C6	-4.25	1.45	1.53
8	J	1504	1N7	C18-C6	-4.22	1.45	1.53
8	I	1402	1N7	O4-C4	-4.20	1.36	1.43
8	I	1401	1N7	O4-C4	-4.14	1.36	1.43
8	I	1401	1N7	C18-C6	-4.09	1.45	1.53
8	J	1504	1N7	O4-C4	-3.83	1.37	1.43
8	J	1504	1N7	C2-C15	3.47	1.61	1.55
8	I	1402	1N7	C7-C6	3.20	1.61	1.54
8	J	1504	1N7	C7-C6	3.19	1.61	1.54
8	I	1401	1N7	C7-C6	3.12	1.60	1.54
8	J	1504	1N7	C14-C15	-3.06	1.48	1.53
8	I	1402	1N7	C14-C15	-3.05	1.48	1.53
8	J	1504	1N7	C5-C9	2.98	1.60	1.55
8	I	1402	1N7	C5-C9	2.96	1.60	1.55
8	I	1401	1N7	C14-C15	-2.85	1.49	1.53
8	I	1402	1N7	C2-C15	2.84	1.60	1.55
8	I	1401	1N7	C2-C15	2.80	1.59	1.55
8	I	1401	1N7	C5-C9	2.65	1.60	1.55
8	J	1504	1N7	C16-C15	2.38	1.57	1.53
8	J	1504	1N7	O2-C13	-2.32	1.36	1.43
8	I	1401	1N7	C14-C13	2.31	1.56	1.51
8	I	1402	1N7	O2-C13	-2.31	1.36	1.43
8	I	1401	1N7	O2-C13	-2.23	1.36	1.43
8	I	1402	1N7	C16-C15	2.15	1.57	1.53
8	I	1401	1N7	C20-C9	-2.11	1.50	1.54
8	I	1401	1N7	C16-C15	2.08	1.57	1.53

All (38) bond angle outliers are listed below:

Mol	Chain	Res	Type	Atoms	Z	Observed(°)	Ideal(°)
8	I	1401	1N7	C9-C5-C4	-8.35	110.04	117.67
8	J	1504	1N7	C9-C5-C4	-8.01	110.35	117.67
8	I	1402	1N7	C9-C5-C4	-7.38	110.93	117.67
8	I	1401	1N7	C6-C5-C4	6.07	113.05	107.40
8	J	1504	1N7	C5-C9-C20	-6.02	112.30	119.50
8	J	1504	1N7	C9-C5-C6	5.69	105.83	100.09
8	I	1402	1N7	C7-C6-C18	-5.44	110.72	118.33
8	I	1401	1N7	C5-C9-C20	-5.39	113.06	119.50
8	I	1402	1N7	C19-C3-C4	-5.38	107.19	114.30
8	I	1401	1N7	C7-C6-C18	-4.92	111.46	118.33
8	I	1402	1N7	C6-C5-C4	4.87	111.94	107.40
8	I	1401	1N7	C19-C3-C4	-4.66	108.15	114.30
8	J	1504	1N7	C6-C5-C4	4.61	111.69	107.40
8	J	1504	1N7	C7-C6-C18	-4.60	111.91	118.33
8	J	1504	1N7	C3-C19-C2	-4.42	109.17	113.73
8	I	1402	1N7	C5-C9-C20	-4.17	114.52	119.50
8	I	1401	1N7	C3-C19-C2	-3.95	109.65	113.73
8	I	1402	1N7	C3-C19-C2	-3.77	109.84	113.73
8	J	1504	1N7	C19-C18-C17	-3.73	107.41	111.88
8	I	1401	1N7	C9-C5-C6	3.22	103.34	100.09
8	I	1401	1N7	C21-C20-C9	-3.20	108.02	112.92
8	J	1504	1N7	C8-C9-C5	3.16	106.66	103.55
8	I	1402	1N7	C9-C5-C6	2.90	103.02	100.09
8	I	1401	1N7	C8-C9-C5	2.80	106.30	103.55
8	I	1402	1N7	C21-C20-C9	-2.77	108.69	112.92
8	I	1402	1N7	C14-C13-C12	-2.72	107.30	110.55
8	I	1401	1N7	C16-C15-C2	-2.68	109.81	112.66
8	I	1402	1N7	C6-C18-C17	-2.59	108.37	111.81
8	I	1402	1N7	C3-C19-C18	-2.57	107.12	110.88
8	J	1504	1N7	C1-C2-C15	2.54	111.52	107.77
8	I	1402	1N7	C8-C7-C6	-2.46	100.26	105.13
8	I	1401	1N7	C8-C7-C6	-2.40	100.37	105.13
8	J	1504	1N7	C21-C20-C9	-2.37	109.30	112.92
8	I	1402	1N7	C8-C9-C5	2.35	105.86	103.55
8	I	1401	1N7	C3-C19-C18	-2.34	107.45	110.88
8	I	1402	1N7	C15-C14-C13	-2.25	109.45	112.76
8	J	1504	1N7	C16-C15-C14	-2.24	108.62	111.19
8	I	1401	1N7	C19-C18-C17	-2.04	109.44	111.88

There are no chirality outliers.

All (17) torsion outliers are listed below:

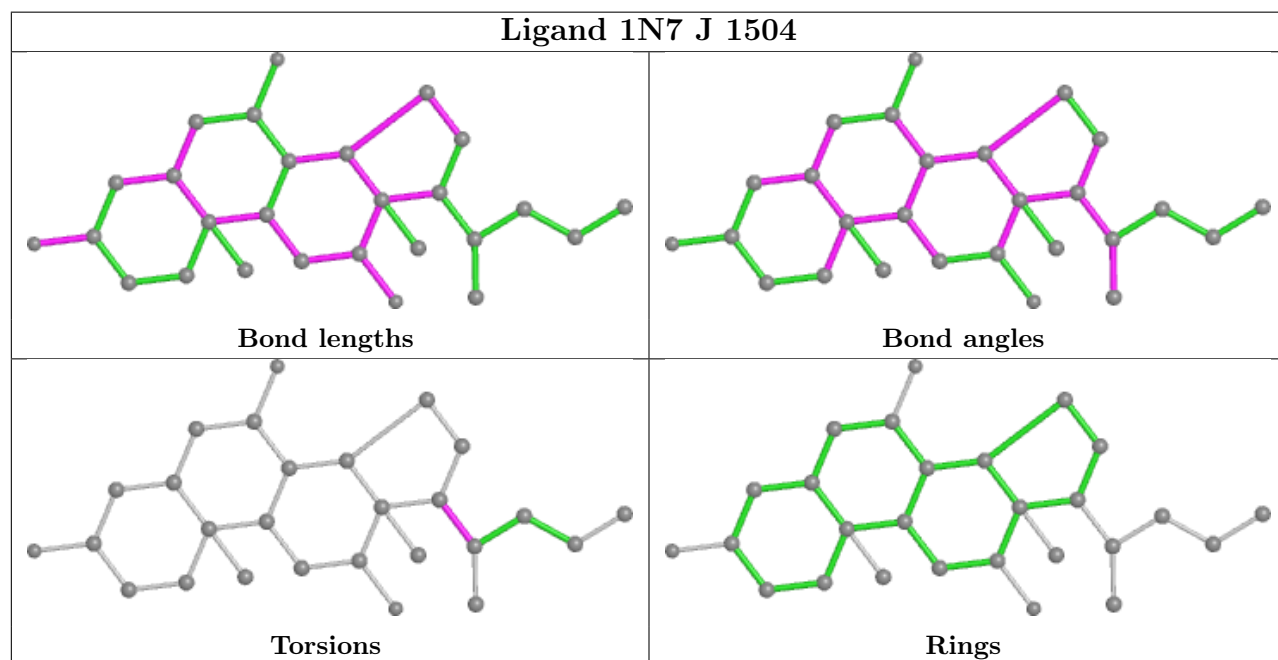
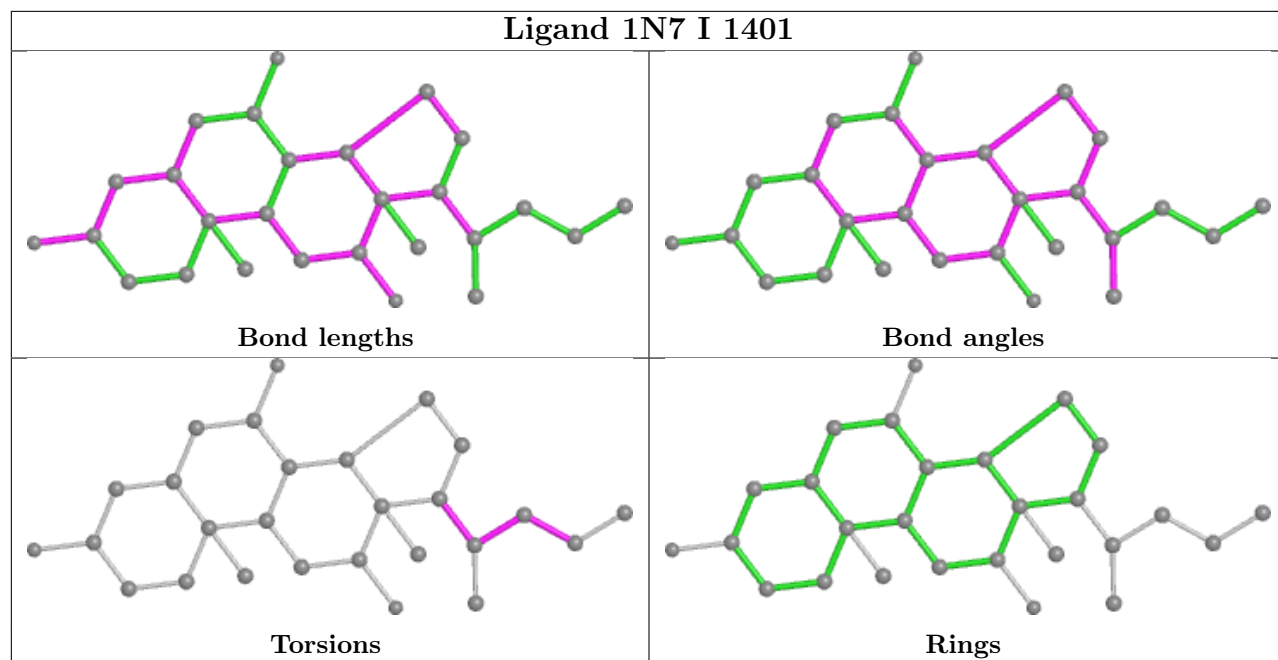
Mol	Chain	Res	Type	Atoms
8	I	1401	1N7	C21-C20-C9-C5
8	I	1401	1N7	C22-C20-C9-C8
8	I	1402	1N7	C21-C20-C9-C5
8	J	1504	1N7	C21-C20-C9-C5
8	I	1401	1N7	C21-C20-C9-C8
8	I	1401	1N7	C22-C20-C9-C5
8	I	1401	1N7	C21-C20-C22-C23
8	I	1402	1N7	C21-C20-C9-C8
8	J	1504	1N7	C21-C20-C9-C8
8	I	1402	1N7	C22-C20-C9-C5
8	J	1504	1N7	C22-C20-C9-C5
8	I	1402	1N7	C22-C20-C9-C8
8	J	1504	1N7	C22-C20-C9-C8
8	I	1401	1N7	C20-C22-C23-C24
8	I	1401	1N7	C9-C20-C22-C23
8	I	1402	1N7	C21-C20-C22-C23
8	I	1402	1N7	C20-C22-C23-C24

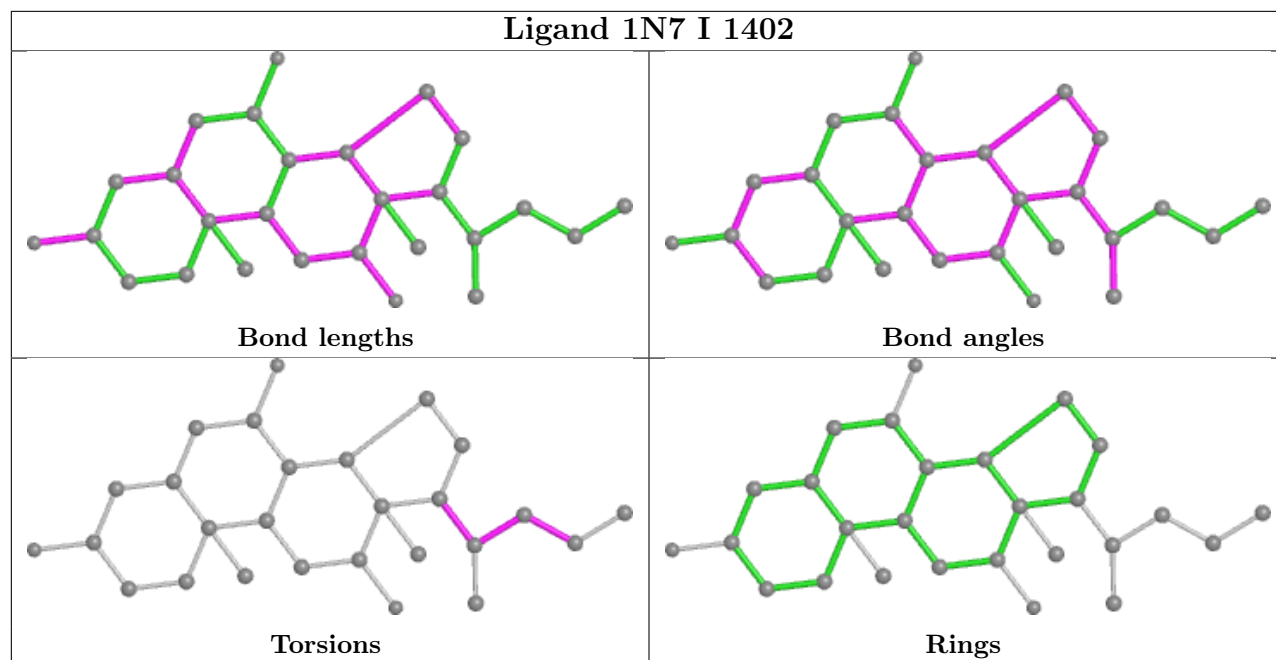
There are no ring outliers.

3 monomers are involved in 24 short contacts:

Mol	Chain	Res	Type	Clashes	Symm-Clashes
8	I	1401	1N7	8	0
8	J	1504	1N7	8	0
8	I	1402	1N7	8	0

The following is a two-dimensional graphical depiction of Mogul quality analysis of bond lengths, bond angles, torsion angles, and ring geometry for all instances of the Ligand of Interest. In addition, ligands with molecular weight > 250 and outliers as shown on the validation Tables will also be included. For torsion angles, if less than 5% of the Mogul distribution of torsion angles is within 10 degrees of the torsion angle in question, then that torsion angle is considered an outlier. Any bond that is central to one or more torsion angles identified as an outlier by Mogul will be highlighted in the graph. For rings, the root-mean-square deviation (RMSD) between the ring in question and similar rings identified by Mogul is calculated over all ring torsion angles. If the average RMSD is greater than 60 degrees and the minimal RMSD between the ring in question and any Mogul-identified rings is also greater than 60 degrees, then that ring is considered an outlier. The outliers are highlighted in purple. The color gray indicates Mogul did not find sufficient equivalents in the CSD to analyse the geometry.





## 5.7 Other polymers [i](#)

There are no such residues in this entry.

## 5.8 Polymer linkage issues [i](#)

There are no chain breaks in this entry.



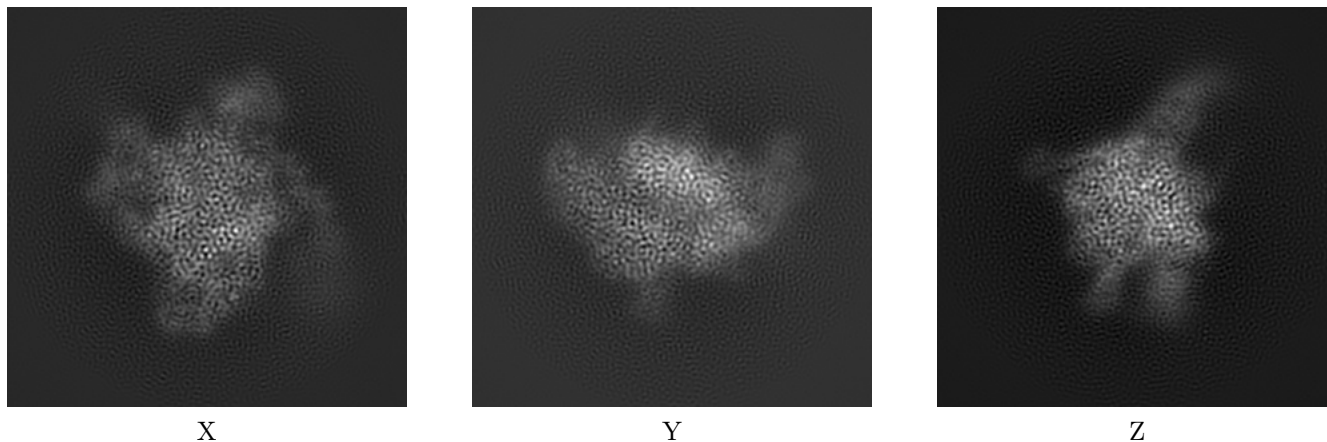
## 6 Map visualisation [i](#)

This section contains visualisations of the EMDB entry EMD-23895. These allow visual inspection of the internal detail of the map and identification of artifacts.

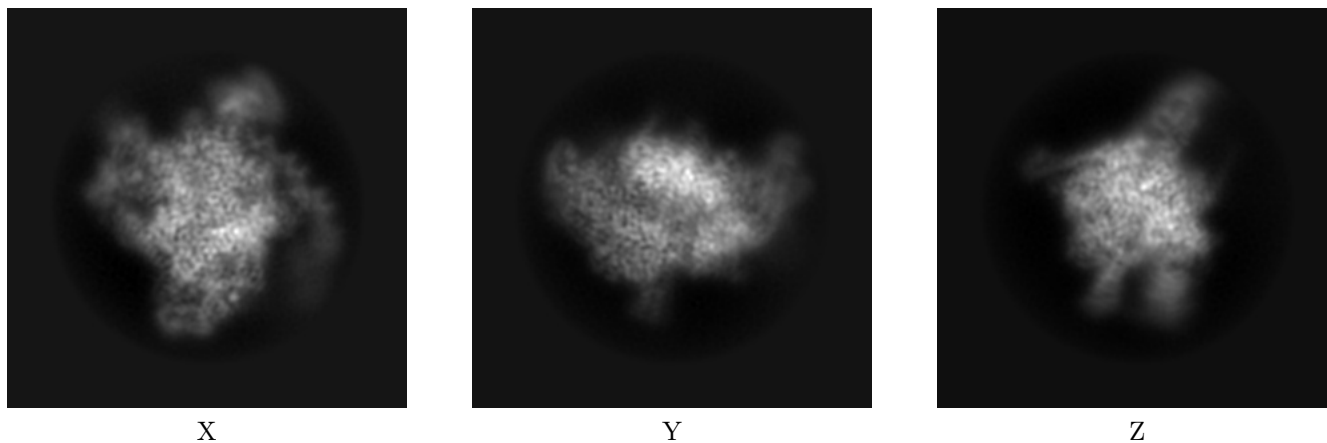
Images derived from a raw map, generated by summing the deposited half-maps, are presented below the corresponding image components of the primary map to allow further visual inspection and comparison with those of the primary map.

### 6.1 Orthogonal projections [i](#)

#### 6.1.1 Primary map



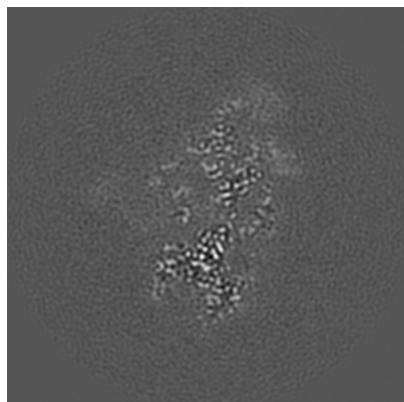
#### 6.1.2 Raw map



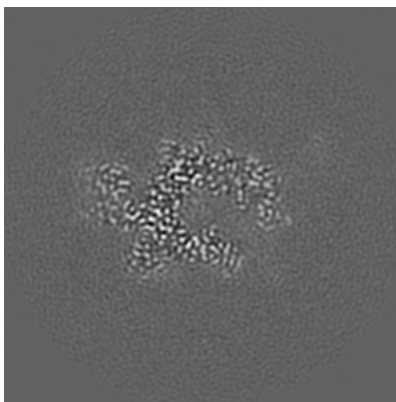
The images above show the map projected in three orthogonal directions.

## 6.2 Central slices [i](#)

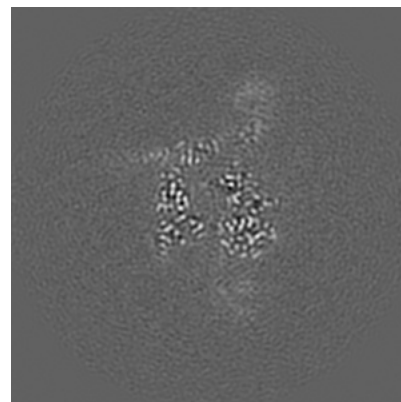
### 6.2.1 Primary map



X Index: 128

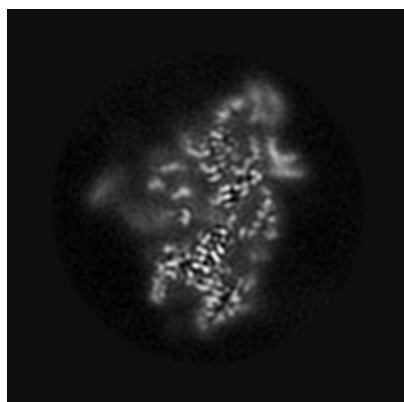


Y Index: 128

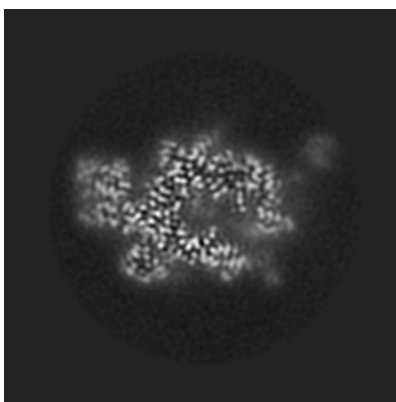


Z Index: 128

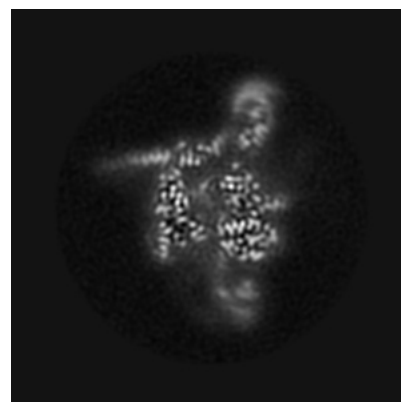
### 6.2.2 Raw map



X Index: 128



Y Index: 128

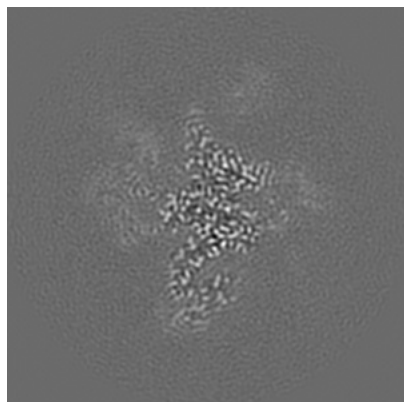


Z Index: 128

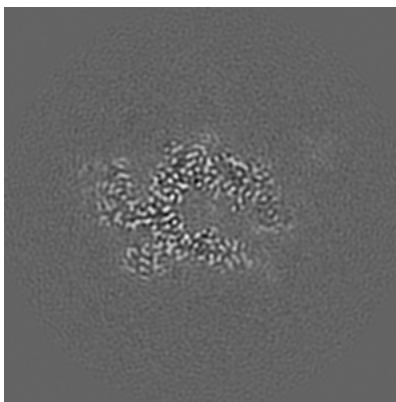
The images above show central slices of the map in three orthogonal directions.

## 6.3 Largest variance slices [i](#)

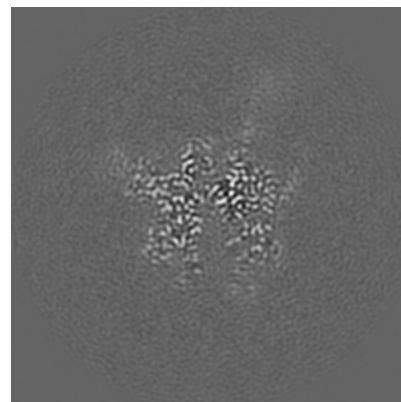
### 6.3.1 Primary map



X Index: 145

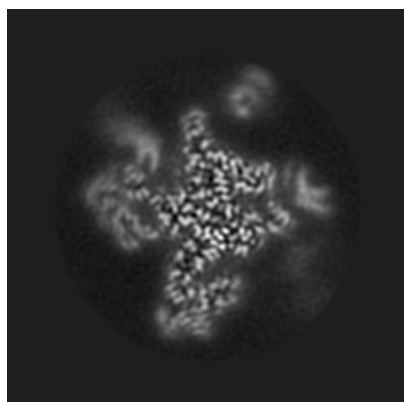


Y Index: 130

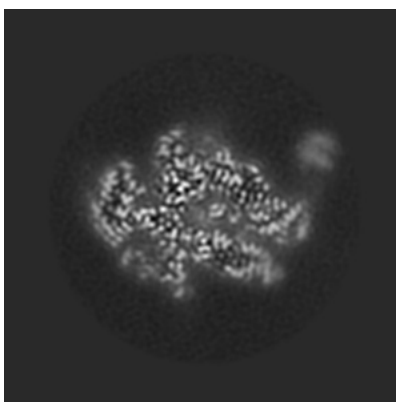


Z Index: 112

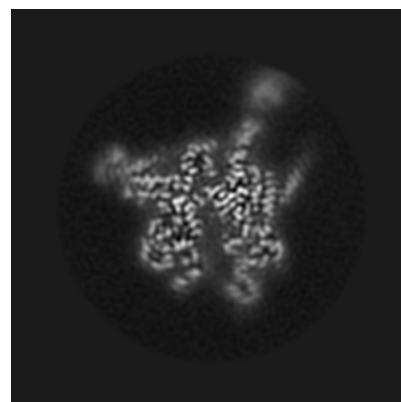
### 6.3.2 Raw map



X Index: 146



Y Index: 136

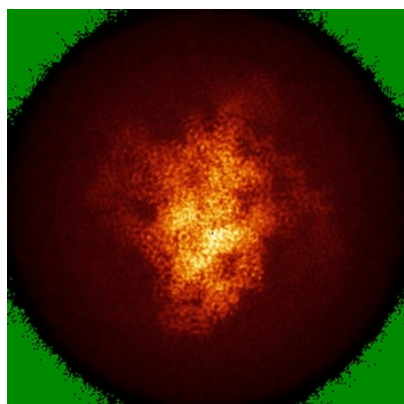


Z Index: 113

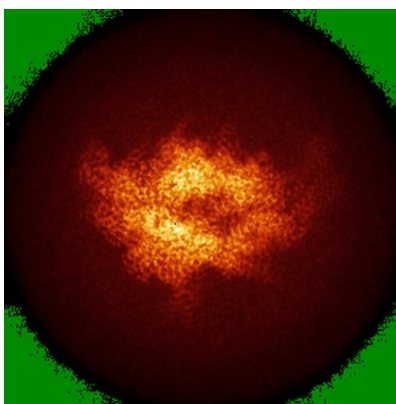
The images above show the largest variance slices of the map in three orthogonal directions.

## 6.4 Orthogonal standard-deviation projections (False-color) [i](#)

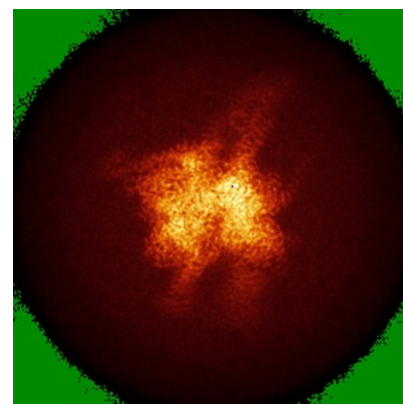
### 6.4.1 Primary map



X

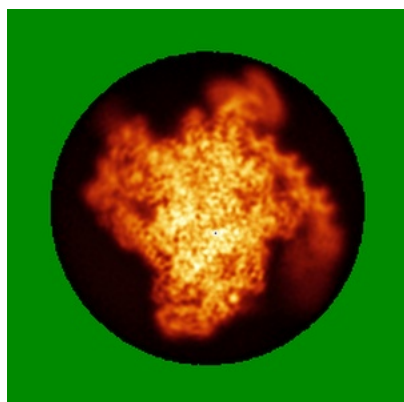


Y

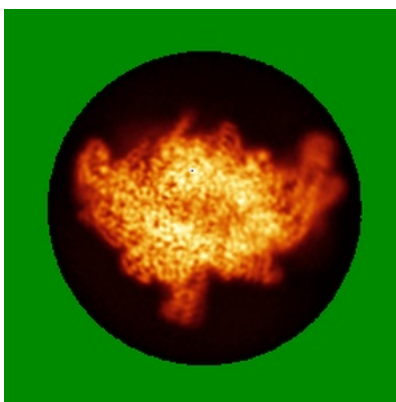


Z

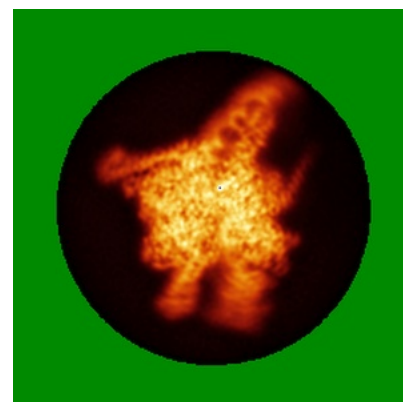
### 6.4.2 Raw map



X



Y

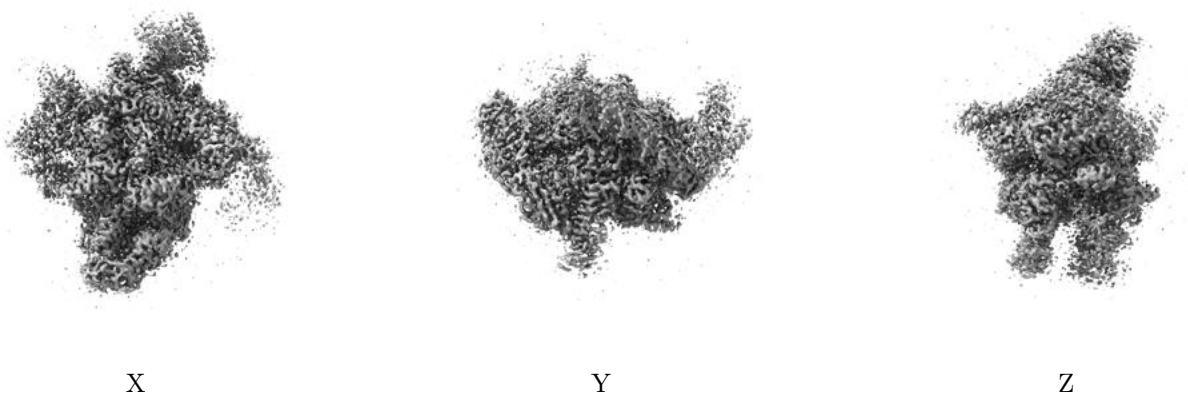


Z

The images above show the map standard deviation projections with false color in three orthogonal directions. Minimum values are shown in green, max in blue, and dark to light orange shades represent small to large values respectively.

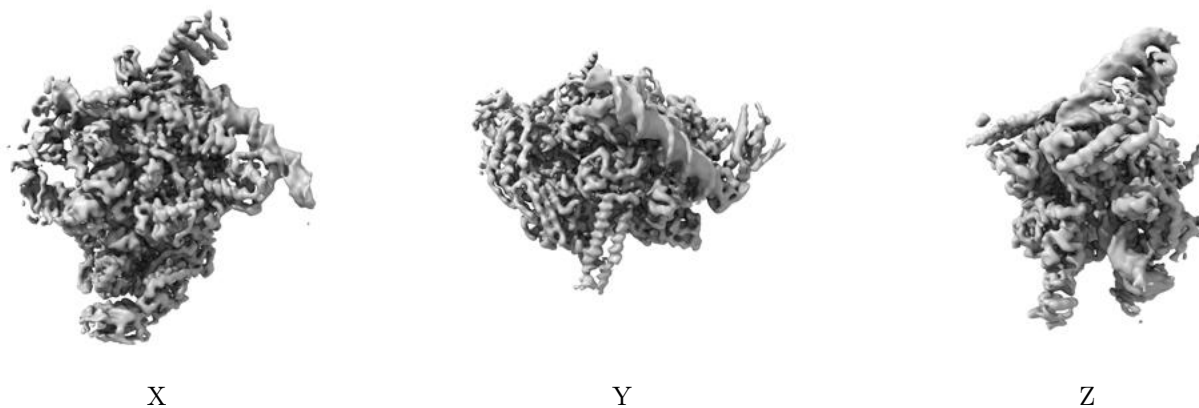
## 6.5 Orthogonal surface views [i](#)

### 6.5.1 Primary map



The images above show the 3D surface view of the map at the recommended contour level 0.023. These images, in conjunction with the slice images, may facilitate assessment of whether an appropriate contour level has been provided.

### 6.5.2 Raw map



These images show the 3D surface of the raw map. The raw map's contour level was selected so that its surface encloses the same volume as the primary map does at its recommended contour level.

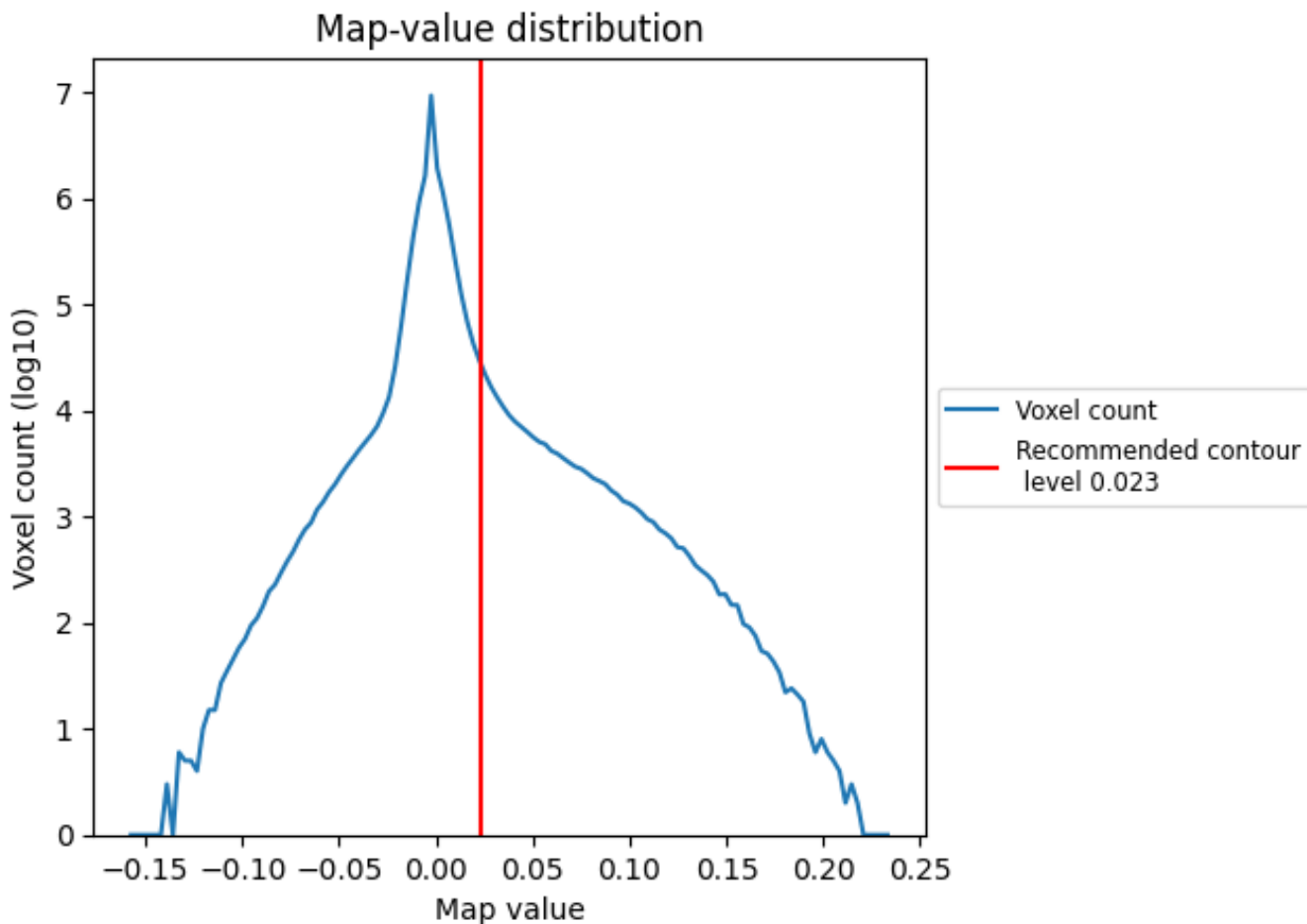
## 6.6 Mask visualisation [i](#)

This section was not generated. No masks/segmentation were deposited.

## 7 Map analysis [i](#)

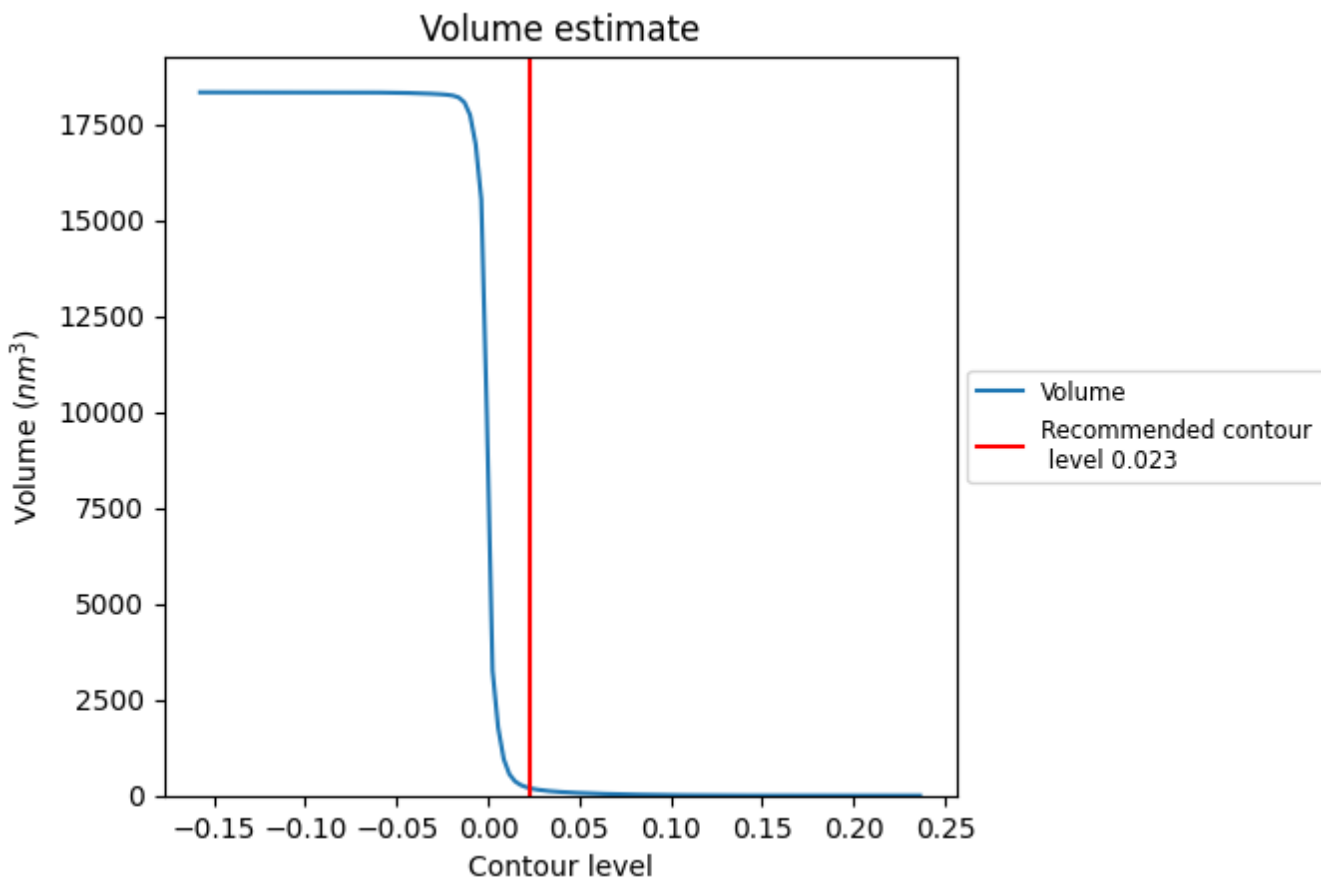
This section contains the results of statistical analysis of the map.

### 7.1 Map-value distribution [i](#)



The map-value distribution is plotted in 128 intervals along the x-axis. The y-axis is logarithmic. A spike in this graph at zero usually indicates that the volume has been masked.

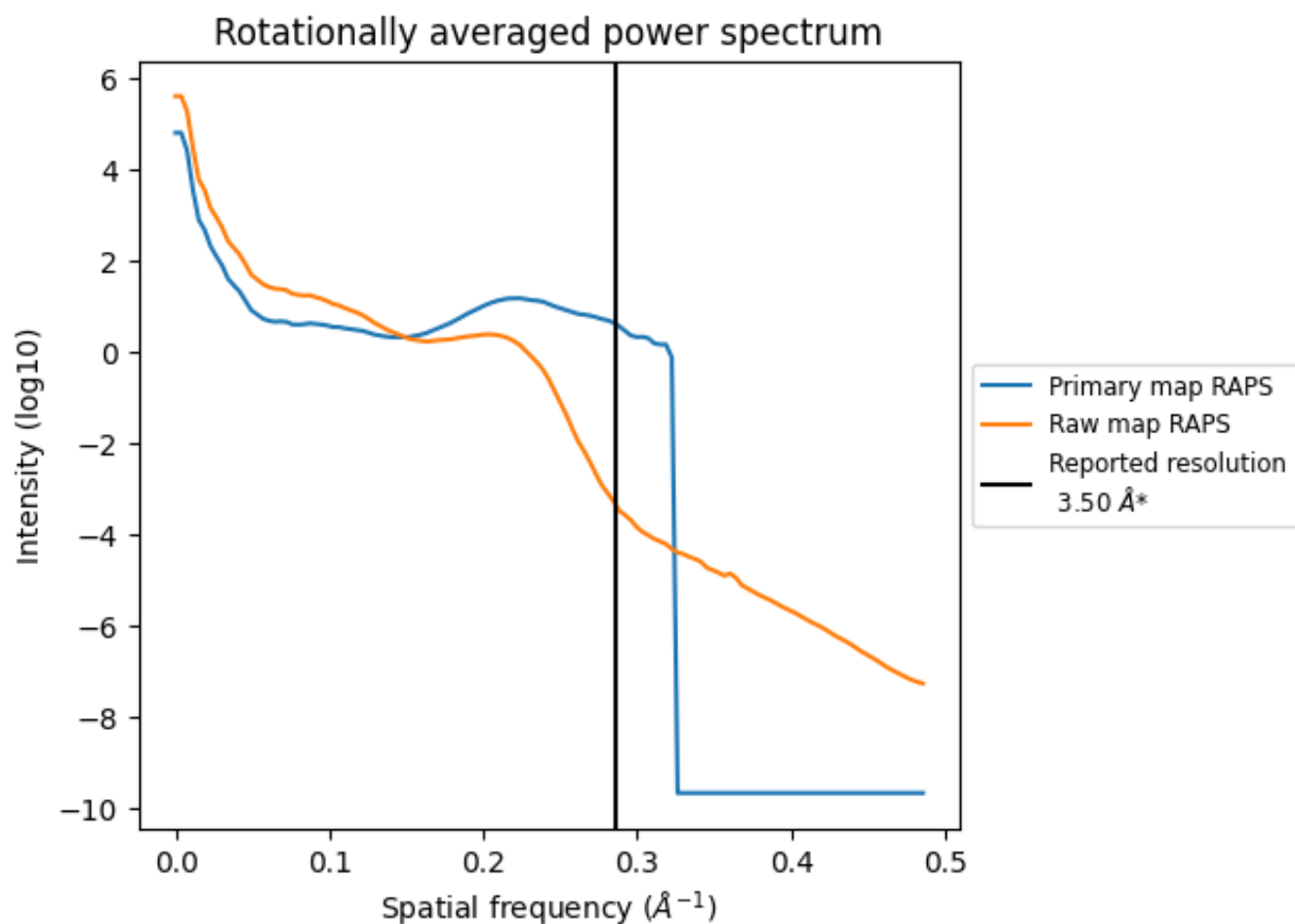
## 7.2 Volume estimate [i](#)



The volume at the recommended contour level is 194  $\text{nm}^3$ ; this corresponds to an approximate mass of 175 kDa.

The volume estimate graph shows how the enclosed volume varies with the contour level. The recommended contour level is shown as a vertical line and the intersection between the line and the curve gives the volume of the enclosed surface at the given level.

### 7.3 Rotationally averaged power spectrum [i](#)



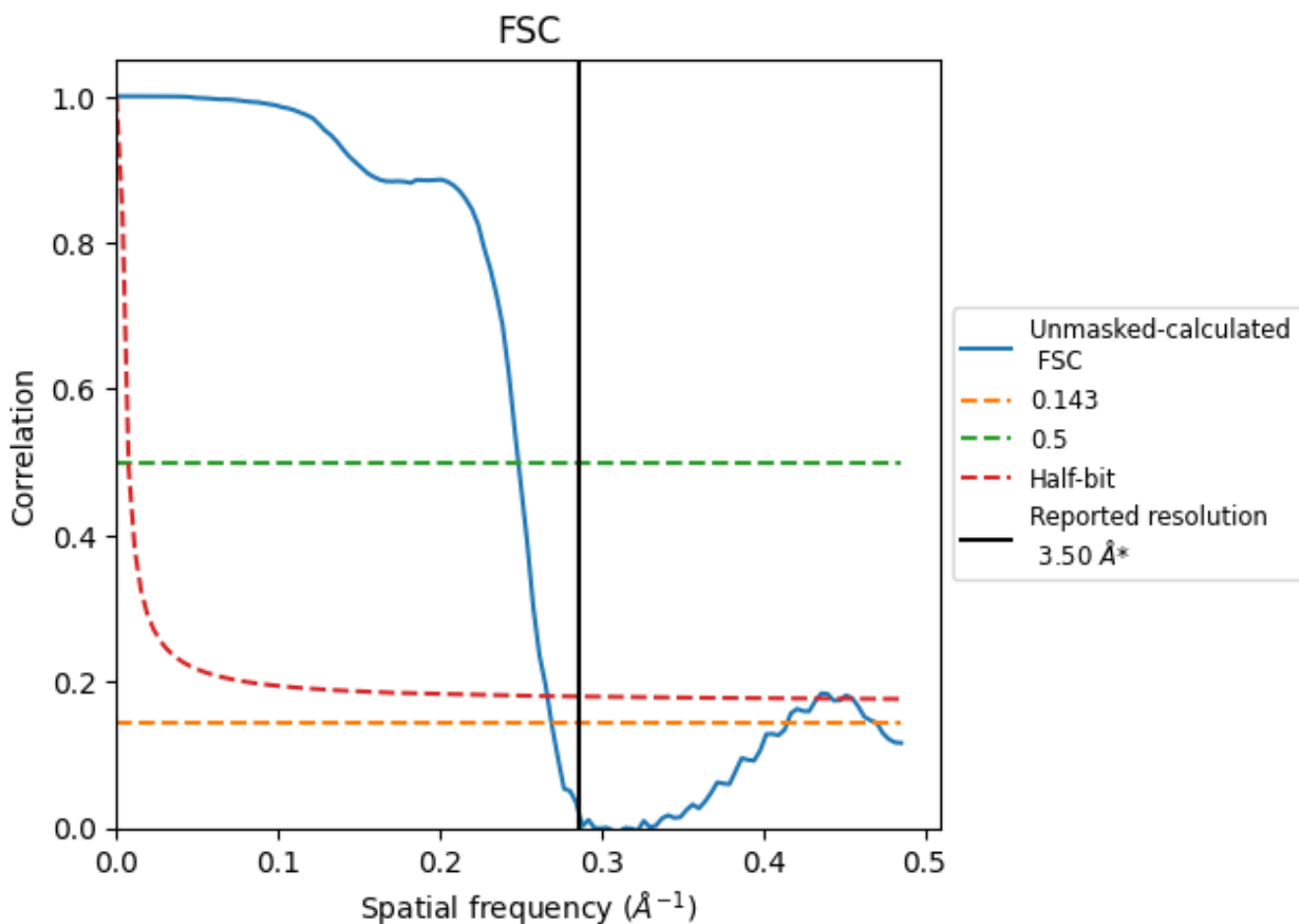
\*Reported resolution corresponds to spatial frequency of 0.286 Å<sup>-1</sup>



## 8 Fourier-Shell correlation [i](#)

Fourier-Shell Correlation (FSC) is the most commonly used method to estimate the resolution of single-particle and subtomogram-averaged maps. The shape of the curve depends on the imposed symmetry, mask and whether or not the two 3D reconstructions used were processed from a common reference. The reported resolution is shown as a black line. A curve is displayed for the half-bit criterion in addition to lines showing the 0.143 gold standard cut-off and 0.5 cut-off.

### 8.1 FSC [i](#)



\*Reported resolution corresponds to spatial frequency of 0.286 Å<sup>-1</sup>

## 8.2 Resolution estimates [i](#)

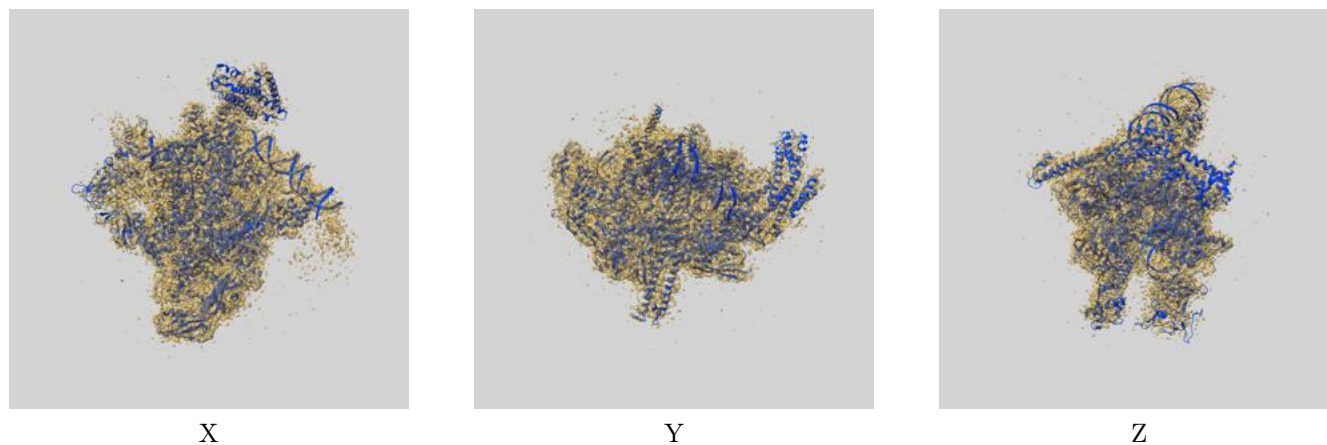
Resolution estimate (Å)	Estimation criterion (FSC cut-off)		
	0.143	0.5	Half-bit
Reported by author	3.50	-	-
Author-provided FSC curve	-	-	-
Unmasked-calculated*	3.72	4.02	3.75

\*Resolution estimate based on FSC curve calculated by comparison of deposited half-maps.

## 9 Map-model fit [i](#)

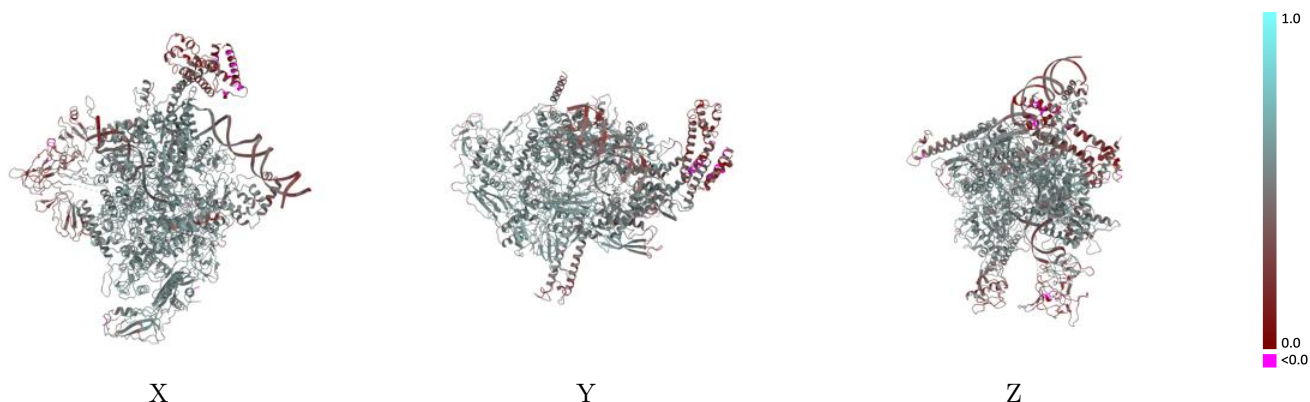
This section contains information regarding the fit between EMDB map EMD-23895 and PDB model 7MKI. Per-residue inclusion information can be found in section 3 on page 6.

### 9.1 Map-model overlay [i](#)



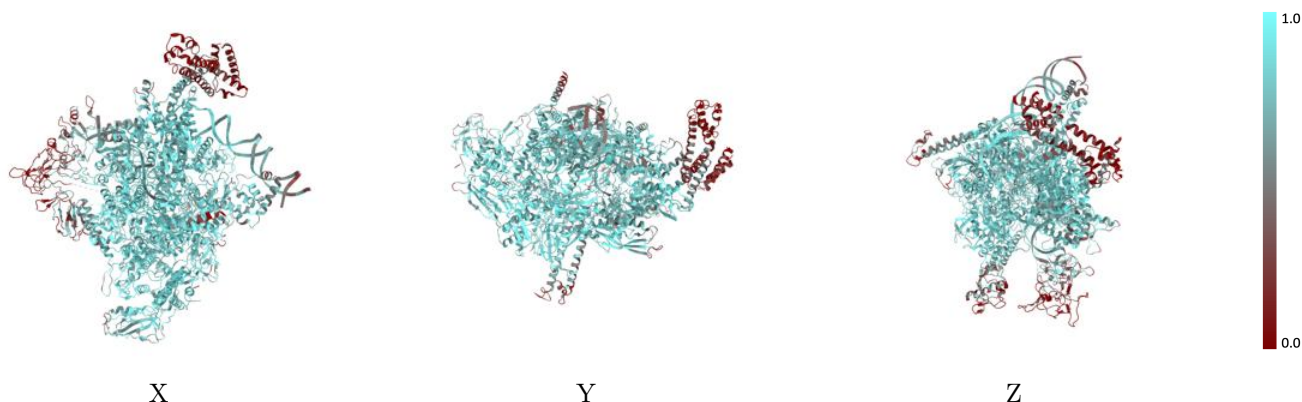
The images above show the 3D surface view of the map at the recommended contour level 0.023 at 50% transparency in yellow overlaid with a ribbon representation of the model coloured in blue. These images allow for the visual assessment of the quality of fit between the atomic model and the map.

## 9.2 Q-score mapped to coordinate model [i](#)



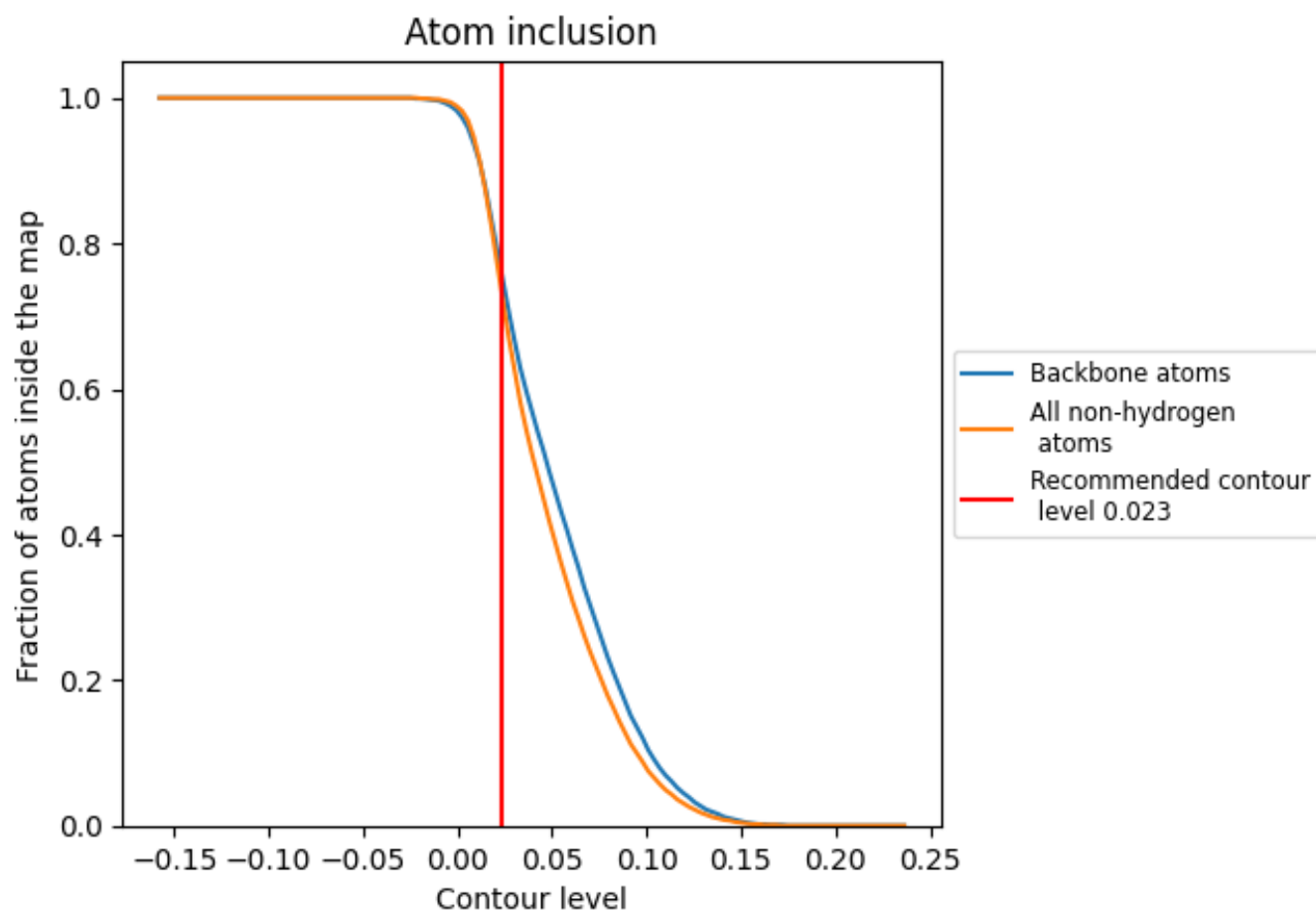
The images above show the model with each residue coloured according to its Q-score. This shows their resolvability in the map with higher Q-score values reflecting better resolvability. Please note: Q-score is calculating the resolvability of atoms, and thus high values are only expected at resolutions at which atoms can be resolved. Low Q-score values may therefore be expected for many entries.

## 9.3 Atom inclusion mapped to coordinate model [i](#)



The images above show the model with each residue coloured according to its atom inclusion. This shows to what extent they are inside the map at the recommended contour level (0.023).



















## 9.4 Atom inclusion [i](#)



At the recommended contour level, 76% of all backbone atoms, 74% of all non-hydrogen atoms, are inside the map.

## 9.5 Map-model fit summary

The table lists the average atom inclusion at the recommended contour level (0.023) and Q-score for the entire model and for each chain.

Chain	Atom inclusion	Q-score
All	 0.7380	 0.4920
G	 0.8060	 0.5300
H	 0.7540	 0.5080
I	 0.7880	 0.5180
J	 0.7580	 0.5070
K	 0.6760	 0.4890
L	 0.5350	 0.3990
P	 0.6980	 0.4020
Q	 0.6920	 0.4050

