



Full wwPDB EM Validation Report ⓘ

Apr 5, 2022 – 01:16 pm BST

PDB ID : 7O7Q
EMDB ID : EMD-12753
Title : (h-alpha2M)4 trypsin-activated state
Authors : Luque, D.; Goulas, T.; Mata, C.P.; Mendes, S.R.; Gomis-Ruth, F.X.; Caston, J.R.
Deposited on : 2021-04-13
Resolution : 3.60 Å(reported)
Based on initial model : 4ACQ

This is a Full wwPDB EM Validation Report for a publicly released PDB entry.

We welcome your comments at validation@mail.wwpdb.org

A user guide is available at

<https://www.wwpdb.org/validation/2017/EMValidationReportHelp>

with specific help available everywhere you see the ⓘ symbol.

The following versions of software and data (see [references ⓘ](#)) were used in the production of this report:

EMDB validation analysis : 0.0.0.dev97
Mogul : 1.8.4, CSD as541be (2020)
MolProbity : 4.02b-467
Percentile statistics : 20191225.v01 (using entries in the PDB archive December 25th 2019)
Ideal geometry (proteins) : Engh & Huber (2001)
Ideal geometry (DNA, RNA) : Parkinson et al. (1996)
Validation Pipeline (wwPDB-VP) : 2.27

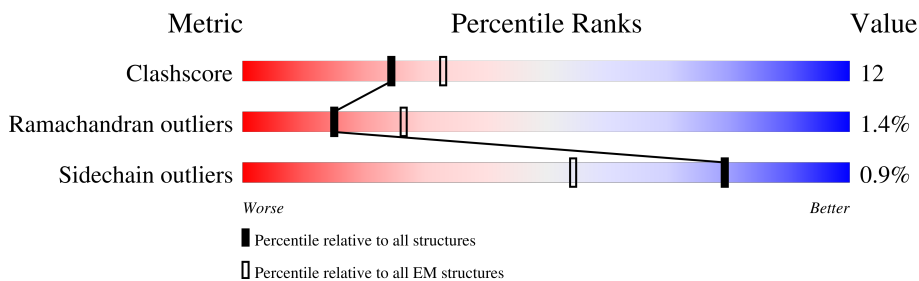
1 Overall quality at a glance i

The following experimental techniques were used to determine the structure:

ELECTRON MICROSCOPY

The reported resolution of this entry is 3.60 Å.

Percentile scores (ranging between 0-100) for global validation metrics of the entry are shown in the following graphic. The table shows the number of entries on which the scores are based.



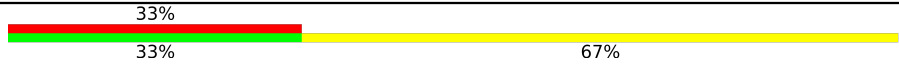

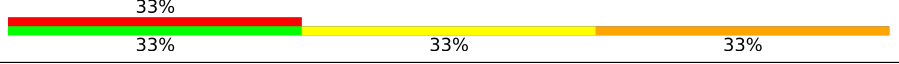

Metric	Whole archive (#Entries)	EM structures (#Entries)
Clashscore	158937	4297
Ramachandran outliers	154571	4023
Sidechain outliers	154315	3826

The table below summarises the geometric issues observed across the polymeric chains and their fit to the map. The red, orange, yellow and green segments of the bar indicate the fraction of residues that contain outliers for ≥ 3 , 2, 1 and 0 types of geometric quality criteria respectively. A grey segment represents the fraction of residues that are not modelled. The numeric value for each fraction is indicated below the corresponding segment, with a dot representing fractions $\leq 5\%$. The upper red bar (where present) indicates the fraction of residues that have poor fit to the EM map (all-atom inclusion $< 40\%$). The numeric value is given above the bar.

Mol	Chain	Length	Quality of chain
1	A	1474	
1	B	1474	
1	C	1474	
1	D	1474	
2	E	2	
2	G	2	
2	I	2	
2	K	2	

Continued on next page...

Continued from previous page...

Mol	Chain	Length	Quality of chain
3	F	3	
3	H	3	
3	J	3	
3	L	3	

The following table lists non-polymeric compounds, carbohydrate monomers and non-standard residues in protein, DNA, RNA chains that are outliers for geometric or electron-density-fit criteria:

Mol	Type	Chain	Res	Chirality	Geometry	Clashes	Electron density
3	NAG	F	2	-	-	X	-
3	NAG	L	1	-	-	X	-
3	NAG	L	2	-	-	X	-

2 Entry composition i

There are 4 unique types of molecules in this entry. The entry contains 40530 atoms, of which 0 are hydrogens and 0 are deuteriums.

In the tables below, the AltConf column contains the number of residues with at least one atom in alternate conformation and the Trace column contains the number of residues modelled with at most 2 atoms.

- Molecule 1 is a protein called Alpha-2-macroglobulin.

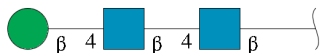
Mol	Chain	Residues	Atoms					AltConf	Trace
			Total	C	N	O	S		
1	A	1285	10023	6375	1681	1924	43	0	0
1	B	1278	9968	6336	1674	1915	43	0	0
1	C	1285	10023	6375	1681	1924	43	0	0
1	D	1278	9968	6336	1674	1915	43	0	0

- Molecule 2 is an oligosaccharide called 2-acetamido-2-deoxy-beta-D-glucopyranose-(1-4)-2-acetamido-2-deoxy-beta-D-glucopyranose.



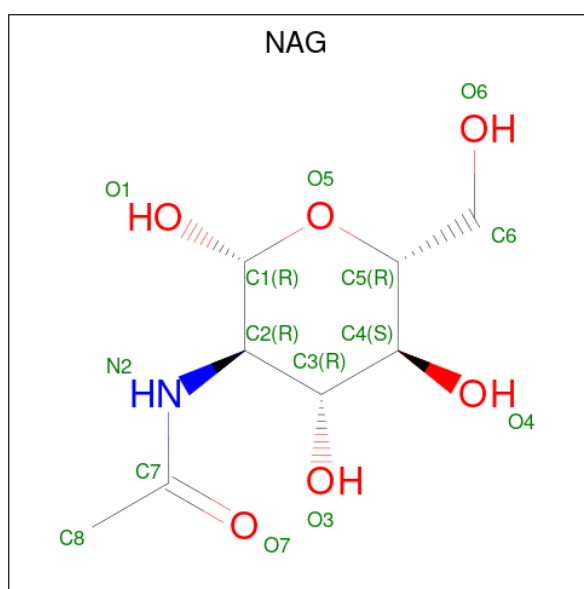
Mol	Chain	Residues	Atoms				AltConf	Trace
			Total	C	N	O		
2	E	2	28	16	2	10	0	0
2	G	2	28	16	2	10	0	0
2	I	2	28	16	2	10	0	0
2	K	2	28	16	2	10	0	0

- Molecule 3 is an oligosaccharide called beta-D-mannopyranose-(1-4)-2-acetamido-2-deoxy-beta-D-glucopyranose-(1-4)-2-acetamido-2-deoxy-beta-D-glucopyranose.



Mol	Chain	Residues	Atoms				AltConf	Trace
			Total	C	N	O		
3	F	3	39	22	2	15	0	0
3	H	3	39	22	2	15	0	0
3	J	3	39	22	2	15	0	0
3	L	3	39	22	2	15	0	0

- Molecule 4 is 2-acetamido-2-deoxy-beta-D-glucopyranose (three-letter code: NAG) (formula: $C_8H_{15}NO_6$).



Mol	Chain	Residues	Atoms				AltConf
			Total	C	N	O	
4	A	1	70	40	5	25	0
4	A	1	70	40	5	25	0
4	A	1	70	40	5	25	0
4	A	1	70	40	5	25	0
4	A	1	70	40	5	25	0
4	B	1	70	40	5	25	0
4	B	1	70	40	5	25	0

Continued on next page...

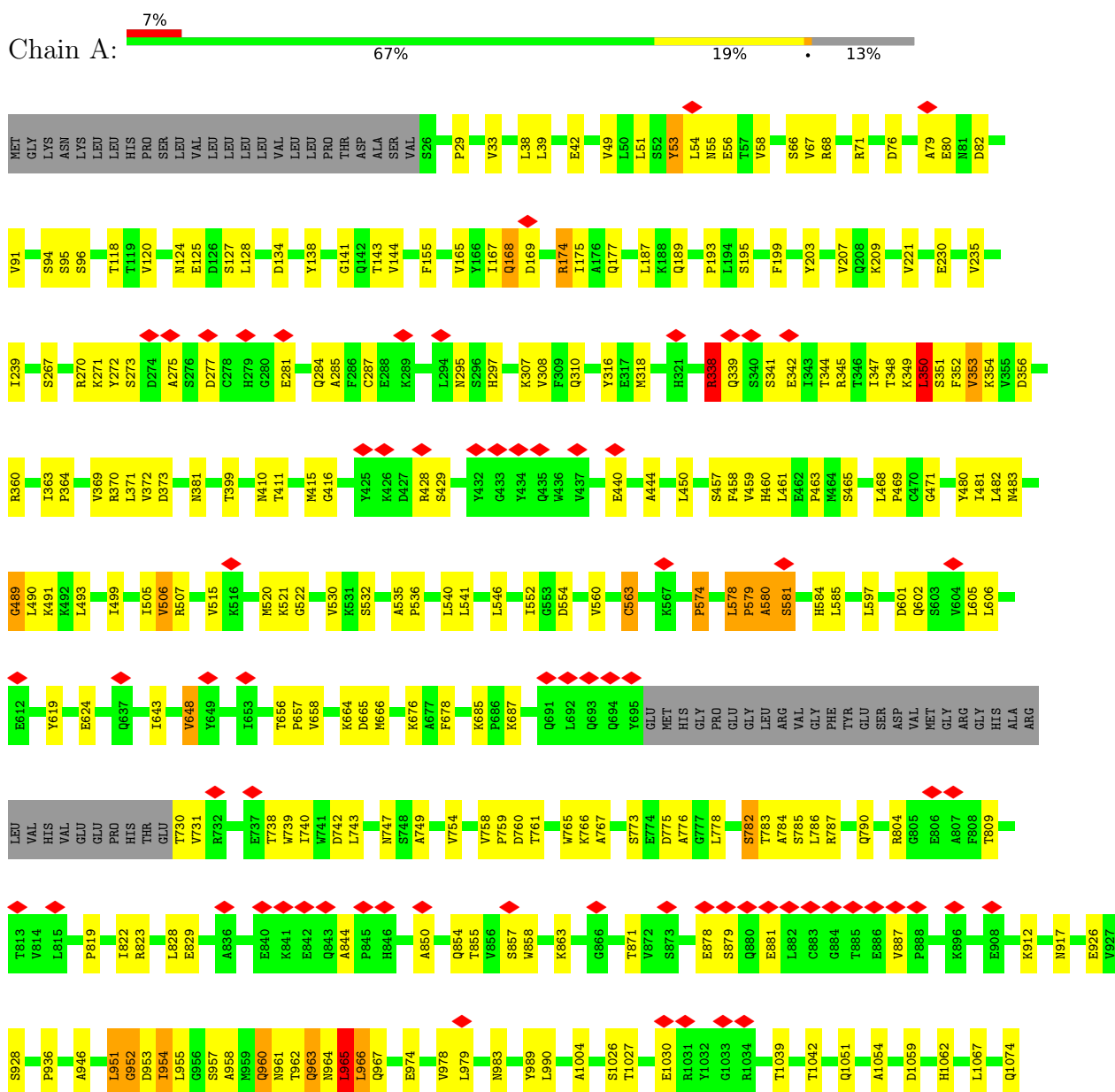
Continued from previous page...

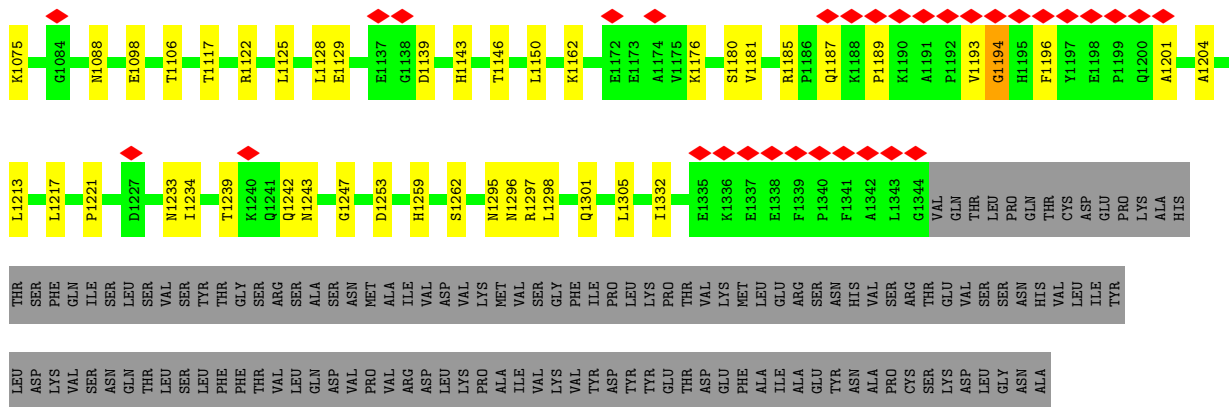
Mol	Chain	Residues	Atoms				AltConf
4	B	1	Total 70	C 40	N 5	O 25	0
4	B	1	Total 70	C 40	N 5	O 25	0
4	B	1	Total 70	C 40	N 5	O 25	0
4	C	1	Total 70	C 40	N 5	O 25	0
4	C	1	Total 70	C 40	N 5	O 25	0
4	C	1	Total 70	C 40	N 5	O 25	0
4	C	1	Total 70	C 40	N 5	O 25	0
4	C	1	Total 70	C 40	N 5	O 25	0
4	D	1	Total 70	C 40	N 5	O 25	0
4	D	1	Total 70	C 40	N 5	O 25	0
4	D	1	Total 70	C 40	N 5	O 25	0
4	D	1	Total 70	C 40	N 5	O 25	0
4	D	1	Total 70	C 40	N 5	O 25	0

3 Residue-property plots

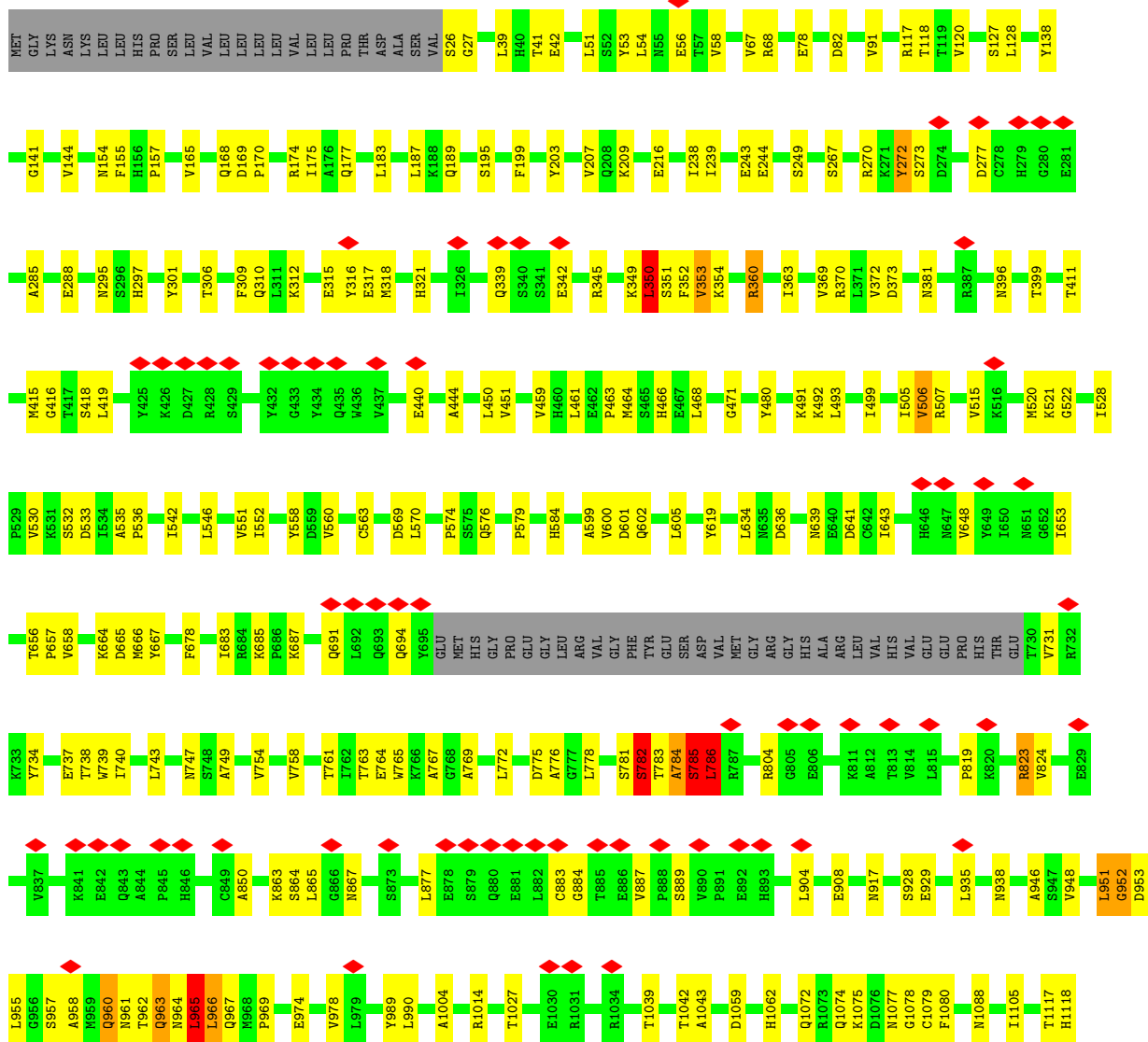
These plots are drawn for all protein, RNA, DNA and oligosaccharide chains in the entry. The first graphic for a chain summarises the proportions of the various outlier classes displayed in the second graphic. The second graphic shows the sequence view annotated by issues in geometry and atom inclusion in map density. Residues are color-coded according to the number of geometric quality criteria for which they contain at least one outlier: green = 0, yellow = 1, orange = 2 and red = 3 or more. A red diamond above a residue indicates a poor fit to the EM map for this residue (all-atom inclusion < 40%). Stretches of 2 or more consecutive residues without any outlier are shown as a green connector. Residues present in the sample, but not in the model, are shown in grey.

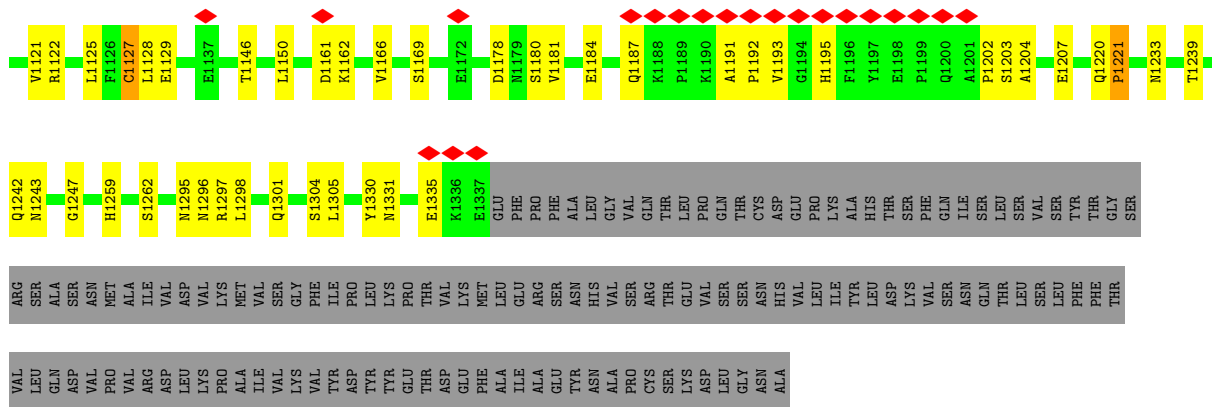
- Molecule 1: Alpha-2-macroglobulin



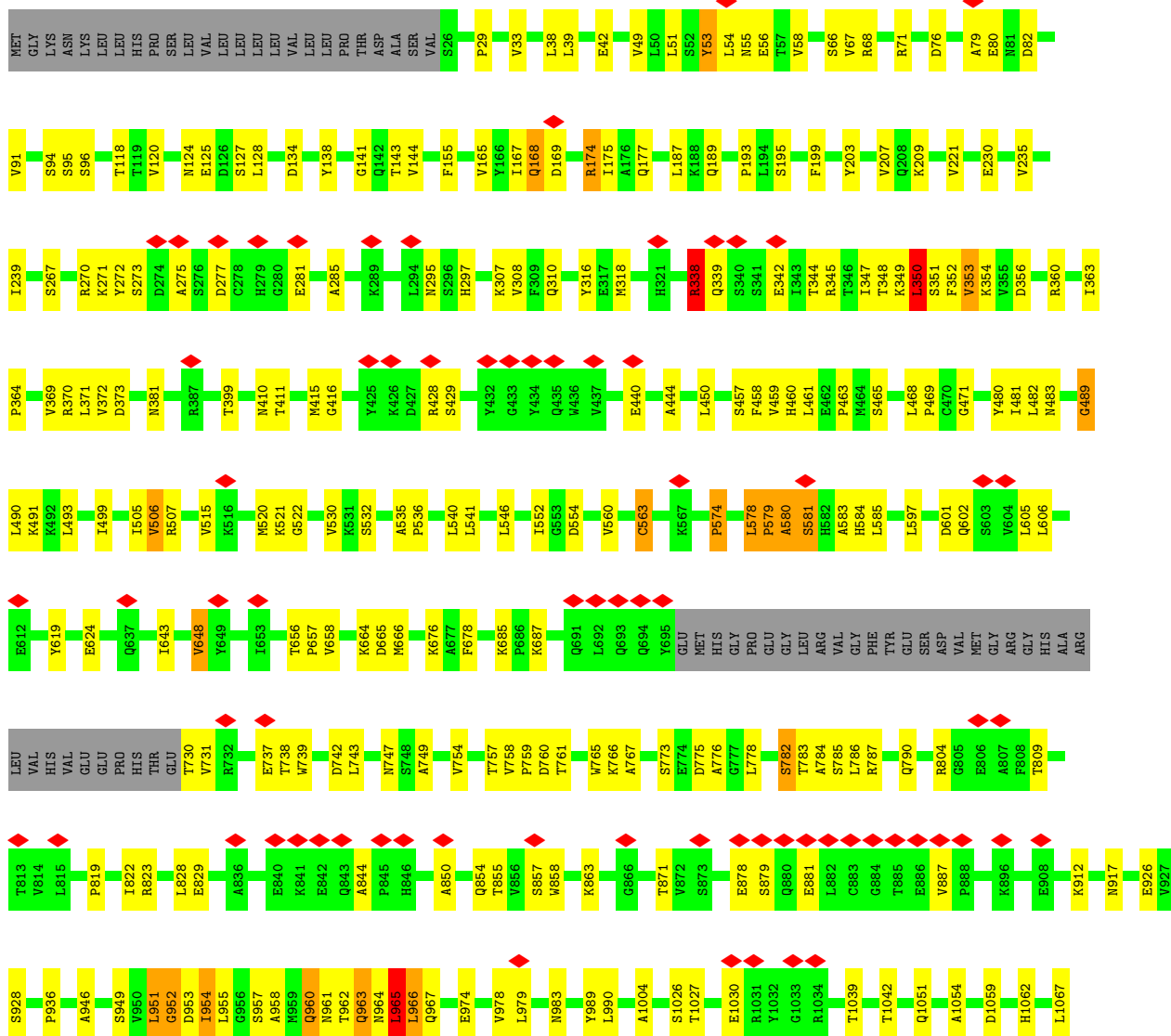


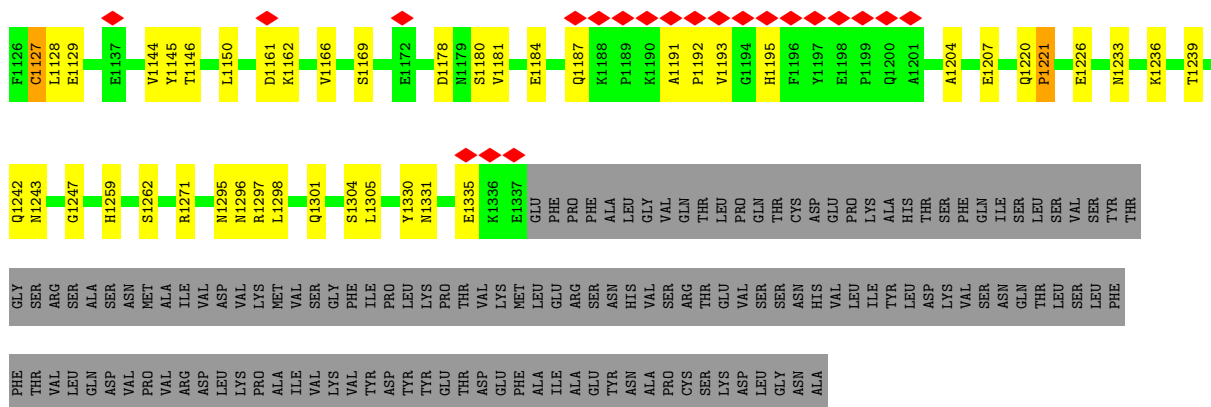
• Molecule 1: Alpha-2-macroglobulin





• Molecule 1: Alpha-2-macroglobulin





- Molecule 2: 2-acetamido-2-deoxy-beta-D-glucopyranose-(1-4)-2-acetamido-2-deoxy-beta-D-glucopyranose



- Molecule 2: 2-acetamido-2-deoxy-beta-D-glucopyranose-(1-4)-2-acetamido-2-deoxy-beta-D-glucopyranose



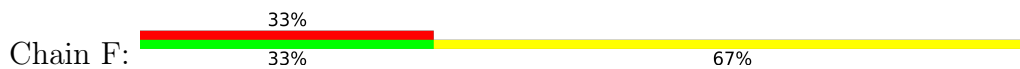
- Molecule 2: 2-acetamido-2-deoxy-beta-D-glucopyranose-(1-4)-2-acetamido-2-deoxy-beta-D-glucopyranose



- Molecule 2: 2-acetamido-2-deoxy-beta-D-glucopyranose-(1-4)-2-acetamido-2-deoxy-beta-D-glucopyranose



- Molecule 3: beta-D-mannopyranose-(1-4)-2-acetamido-2-deoxy-beta-D-glucopyranose-(1-4)-2-acetamido-2-deoxy-beta-D-glucopyranose



- Molecule 3: beta-D-mannopyranose-(1-4)-2-acetamido-2-deoxy-beta-D-glucopyranose-(1-4)-2-acetamido-2-deoxy-beta-D-glucopyranose



- Molecule 3: beta-D-mannopyranose-(1-4)-2-acetamido-2-deoxy-beta-D-glucopyranose-(1-4)-2-acetamido-2-deoxy-beta-D-glucopyranose



- Molecule 3: beta-D-mannopyranose-(1-4)-2-acetamido-2-deoxy-beta-D-glucopyranose-(1-4)-2-acetamido-2-deoxy-beta-D-glucopyranose



4 Experimental information

Property	Value	Source
EM reconstruction method	SINGLE PARTICLE	Depositor
Imposed symmetry	POINT, C2	Depositor
Number of particles used	434851	Depositor
Resolution determination method	FSC 0.143 CUT-OFF	Depositor
CTF correction method	NONE	Depositor
Microscope	FEI TITAN KRIOS	Depositor
Voltage (kV)	300	Depositor
Electron dose ($e^-/\text{\AA}^2$)	40	Depositor
Minimum defocus (nm)	700	Depositor
Maximum defocus (nm)	2500	Depositor
Magnification	47775	Depositor
Image detector	GATAN K2 SUMMIT (4k x 4k)	Depositor
Maximum map value	0.092	Depositor
Minimum map value	-0.003	Depositor
Average map value	-0.000	Depositor
Map value standard deviation	0.003	Depositor
Recommended contour level	0.013	Depositor
Map size (\AA)	314.1, 314.1, 314.1	wwPDB
Map dimensions	300, 300, 300	wwPDB
Map angles ($^\circ$)	90.0, 90.0, 90.0	wwPDB
Pixel spacing (\AA)	1.047, 1.047, 1.047	Depositor

5 Model quality [i](#)

5.1 Standard geometry [i](#)

Bond lengths and bond angles in the following residue types are not validated in this section: NAG, BMA

The Z score for a bond length (or angle) is the number of standard deviations the observed value is removed from the expected value. A bond length (or angle) with $|Z| > 5$ is considered an outlier worth inspection. RMSZ is the root-mean-square of all Z scores of the bond lengths (or angles).

Mol	Chain	Bond lengths		Bond angles	
		RMSZ	# Z >5	RMSZ	# Z >5
1	A	0.48	1/10247 (0.0%)	0.81	11/13921 (0.1%)
1	B	0.50	2/10189 (0.0%)	0.81	14/13842 (0.1%)
1	C	0.49	2/10247 (0.0%)	0.81	11/13921 (0.1%)
1	D	0.50	3/10189 (0.0%)	0.81	14/13842 (0.1%)
All	All	0.49	8/40872 (0.0%)	0.81	50/55526 (0.1%)

Chiral center outliers are detected by calculating the chiral volume of a chiral center and verifying if the center is modelled as a planar moiety or with the opposite hand. A planarity outlier is detected by checking planarity of atoms in a peptide group, atoms in a mainchain group or atoms of a sidechain that are expected to be planar.

Mol	Chain	#Chirality outliers	#Planarity outliers
1	B	0	1
1	D	0	1
All	All	0	2

All (8) bond length outliers are listed below:

Mol	Chain	Res	Type	Atoms	Z	Observed(Å)	Ideal(Å)
1	B	168	GLN	C-N	13.11	1.64	1.34
1	D	168	GLN	C-N	13.06	1.64	1.34
1	D	949	SER	C-N	-9.50	1.12	1.34
1	C	949	SER	C-N	-7.15	1.17	1.34
1	B	169	ASP	C-N	6.02	1.45	1.34
1	D	169	ASP	C-N	5.98	1.45	1.34
1	C	168	GLN	C-N	5.67	1.47	1.34
1	A	168	GLN	C-N	5.65	1.47	1.34

All (50) bond angle outliers are listed below:

Mol	Chain	Res	Type	Atoms	Z	Observed(°)	Ideal(°)
1	D	520	MET	CA-CB-CG	9.50	129.45	113.30
1	B	520	MET	CA-CB-CG	9.49	129.44	113.30
1	D	277	ASP	CB-CG-OD1	7.43	124.99	118.30
1	B	277	ASP	CB-CG-OD1	7.38	124.94	118.30
1	A	350	LEU	CA-CB-CG	7.32	132.13	115.30
1	C	350	LEU	CA-CB-CG	7.30	132.10	115.30
1	B	350	LEU	CA-CB-CG	7.08	131.59	115.30
1	D	350	LEU	CA-CB-CG	7.08	131.59	115.30
1	B	1193	VAL	CG1-CB-CG2	7.00	122.10	110.90
1	D	1193	VAL	CG1-CB-CG2	6.97	122.06	110.90
1	A	658	VAL	CG1-CB-CG2	6.97	122.05	110.90
1	C	658	VAL	CG1-CB-CG2	6.97	122.05	110.90
1	B	1127	CYS	CA-CB-SG	6.97	126.54	114.00
1	D	1127	CYS	CA-CB-SG	6.97	126.54	114.00
1	B	965	LEU	C-N-CA	6.40	137.69	121.70
1	C	965	LEU	C-N-CA	6.40	137.69	121.70
1	A	965	LEU	C-N-CA	6.38	137.66	121.70
1	D	965	LEU	C-N-CA	6.38	137.65	121.70
1	B	170	PRO	N-CA-C	6.38	128.68	112.10
1	D	170	PRO	N-CA-C	6.38	128.68	112.10
1	C	53	TYR	N-CA-C	6.25	127.88	111.00
1	A	53	TYR	N-CA-C	6.24	127.85	111.00
1	C	277	ASP	CB-CG-OD1	6.23	123.91	118.30
1	A	277	ASP	CB-CG-OD1	6.20	123.88	118.30
1	C	168	GLN	C-N-CA	-6.10	106.44	121.70
1	B	520	MET	N-CA-CB	-6.09	99.63	110.60
1	A	168	GLN	C-N-CA	-6.09	106.47	121.70
1	D	520	MET	N-CA-CB	-6.08	99.65	110.60
1	B	964	ASN	CB-CA-C	-6.06	98.27	110.40
1	D	964	ASN	CB-CA-C	-6.06	98.28	110.40
1	C	964	ASN	CB-CA-C	-6.06	98.29	110.40
1	A	964	ASN	CB-CA-C	-6.05	98.29	110.40
1	C	574	PRO	N-CA-C	5.80	127.17	112.10
1	A	574	PRO	N-CA-C	5.79	127.15	112.10
1	A	1194	GLY	C-N-CA	5.71	135.97	121.70
1	C	1194	GLY	C-N-CA	5.71	135.97	121.70
1	B	786	LEU	CB-CG-CD1	5.66	120.62	111.00
1	D	786	LEU	CB-CG-CD1	5.64	120.58	111.00
1	B	782	SER	C-N-CA	5.34	135.04	121.70
1	D	782	SER	C-N-CA	5.34	135.04	121.70
1	A	128	LEU	CA-CB-CG	5.27	127.42	115.30
1	B	128	LEU	CA-CB-CG	5.27	127.42	115.30
1	C	128	LEU	CA-CB-CG	5.27	127.41	115.30

Continued on next page...

Continued from previous page...

Mol	Chain	Res	Type	Atoms	Z	Observed(°)	Ideal(°)
1	D	128	LEU	CA-CB-CG	5.26	127.40	115.30
1	C	338	ARG	NE-CZ-NH2	-5.26	117.67	120.30
1	A	338	ARG	NE-CZ-NH2	-5.25	117.67	120.30
1	D	360	ARG	NE-CZ-NH1	5.16	122.88	120.30
1	B	360	ARG	NE-CZ-NH1	5.14	122.87	120.30
1	B	154	ASN	N-CA-C	-5.07	97.32	111.00
1	D	154	ASN	N-CA-C	-5.05	97.37	111.00

There are no chirality outliers.

All (2) planarity outliers are listed below:

Mol	Chain	Res	Type	Group
1	B	785	SER	Mainchain
1	D	785	SER	Mainchain

5.2 Too-close contacts [i](#)

In the following table, the Non-H and H(model) columns list the number of non-hydrogen atoms and hydrogen atoms in the chain respectively. The H(added) column lists the number of hydrogen atoms added and optimized by MolProbity. The Clashes column lists the number of clashes within the asymmetric unit, whereas Symm-Clashes lists symmetry-related clashes.

Mol	Chain	Non-H	H(model)	H(added)	Clashes	Symm-Clashes
1	A	10023	0	9916	230	0
1	B	9968	0	9867	226	0
1	C	10023	0	9915	236	0
1	D	9968	0	9866	222	0
2	E	28	0	25	2	0
2	G	28	0	25	2	0
2	I	28	0	25	0	0
2	K	28	0	25	1	0
3	F	39	0	34	8	0
3	H	39	0	34	10	0
3	J	39	0	34	1	0
3	L	39	0	34	13	0
4	A	70	0	65	4	0
4	B	70	0	65	1	0
4	C	70	0	65	3	0
4	D	70	0	65	3	0
All	All	40530	0	40060	947	0

The all-atom clashscore is defined as the number of clashes found per 1000 atoms (including hydrogen atoms). The all-atom clashscore for this structure is 12.

All (947) close contacts within the same asymmetric unit are listed below, sorted by their clash magnitude.

Atom-1	Atom-2	Interatomic distance (Å)	Clash overlap (Å)
1:B:962:THR:CB	1:B:990:LEU:HD21	1.48	1.41
1:D:962:THR:CB	1:D:990:LEU:HD21	1.58	1.34
1:C:960:GLN:HE21	1:C:960:GLN:N	1.25	1.34
1:B:962:THR:HB	1:B:990:LEU:CD2	1.57	1.33
1:D:960:GLN:HE21	1:D:960:GLN:N	1.25	1.33
1:B:960:GLN:HE21	1:B:960:GLN:N	1.25	1.31
1:A:960:GLN:HE21	1:A:960:GLN:N	1.25	1.30
1:D:962:THR:HB	1:D:990:LEU:CD2	1.63	1.28
1:A:962:THR:CB	1:A:990:LEU:HD21	1.65	1.26
1:C:962:THR:CB	1:C:990:LEU:HD21	1.67	1.24
1:A:962:THR:HB	1:A:990:LEU:CD2	1.68	1.24
1:C:962:THR:HB	1:C:990:LEU:CD2	1.66	1.24
1:C:952:GLY:O	1:C:1297:ARG:NH1	1.77	1.15
1:B:952:GLY:O	1:B:1297:ARG:NH1	1.89	1.05
3:F:2:NAG:H3	3:F:2:NAG:H83	1.42	1.02
1:A:960:GLN:N	1:A:960:GLN:NE2	2.08	1.02
1:B:960:GLN:N	1:B:960:GLN:NE2	2.08	1.01
1:D:960:GLN:N	1:D:960:GLN:NE2	2.08	1.01
1:C:960:GLN:N	1:C:960:GLN:NE2	2.08	1.00
3:L:2:NAG:H83	3:L:2:NAG:H3	1.41	0.99
1:B:960:GLN:HE21	1:B:960:GLN:H	1.02	0.98
1:B:350:LEU:HD11	1:B:444:ALA:HB2	1.46	0.97
3:H:2:NAG:H3	3:H:2:NAG:H83	1.42	0.96
1:A:960:GLN:HE21	1:A:960:GLN:H	1.02	0.95
1:D:350:LEU:HD11	1:D:444:ALA:HB2	1.46	0.95
1:D:960:GLN:NE2	1:D:960:GLN:H	1.63	0.95
1:A:765:TRP:O	1:A:785:SER:HA	1.66	0.94
1:C:765:TRP:O	1:C:785:SER:HA	1.66	0.94
1:C:960:GLN:NE2	1:C:960:GLN:H	1.63	0.94
1:A:656:THR:OG1	1:D:657:PRO:O	1.87	0.93
1:B:960:GLN:NE2	1:B:960:GLN:H	1.63	0.92
1:D:961:ASN:HD21	1:D:1247:GLY:HA2	1.35	0.92
1:D:960:GLN:HE21	1:D:960:GLN:H	1.02	0.92
1:A:960:GLN:NE2	1:A:960:GLN:H	1.63	0.91
1:B:657:PRO:O	1:C:656:THR:OG1	1.88	0.91
1:D:955:LEU:HB2	1:D:1298:LEU:HD13	1.53	0.90
1:C:960:GLN:HE21	1:C:960:GLN:H	1.02	0.90

Continued on next page...

Continued from previous page...

Atom-1	Atom-2	Interatomic distance (Å)	Clash overlap (Å)
1:C:767:ALA:O	1:C:783:THR:HA	1.72	0.90
1:A:767:ALA:O	1:A:783:THR:HA	1.72	0.88
1:B:962:THR:CG2	1:B:990:LEU:CD2	2.52	0.88
1:D:1271:ARG:NH2	3:L:1:NAG:O3	2.06	0.87
1:B:961:ASN:HD21	1:B:1247:GLY:HA2	1.37	0.87
1:A:363:ILE:HD13	1:A:481:ILE:HD11	1.56	0.86
1:D:952:GLY:O	1:D:1297:ARG:NH1	2.08	0.85
1:B:966:LEU:CD2	1:B:1004:ALA:HB2	2.07	0.85
1:B:955:LEU:HB2	1:B:1298:LEU:HD13	1.58	0.84
1:C:363:ILE:HD13	1:C:481:ILE:HD11	1.56	0.84
1:D:957:SER:O	1:D:960:GLN:NE2	2.11	0.84
1:C:957:SER:O	1:C:960:GLN:NE2	2.11	0.84
1:B:656:THR:OG1	1:C:657:PRO:O	1.95	0.84
1:A:957:SER:O	1:A:960:GLN:NE2	2.11	0.83
1:C:350:LEU:HD11	1:C:444:ALA:HB2	1.60	0.83
1:A:350:LEU:HD11	1:A:444:ALA:HB2	1.60	0.83
1:B:957:SER:O	1:B:960:GLN:NE2	2.11	0.83
1:B:318:MET:O	1:B:339:GLN:HA	1.79	0.83
1:A:657:PRO:O	1:D:656:THR:OG1	1.95	0.82
1:D:318:MET:O	1:D:339:GLN:HA	1.79	0.82
1:A:318:MET:O	1:A:339:GLN:HA	1.80	0.82
1:C:318:MET:O	1:C:339:GLN:HA	1.80	0.81
1:B:966:LEU:HD22	1:B:1004:ALA:HB2	1.63	0.80
1:C:349:LYS:O	1:C:372:VAL:O	2.00	0.79
1:D:957:SER:HB3	1:D:1239:THR:OG1	1.82	0.79
1:C:601:ASP:OD1	1:C:761:THR:OG1	2.01	0.79
1:A:349:LYS:O	1:A:372:VAL:O	2.00	0.79
1:A:601:ASP:OD1	1:A:761:THR:OG1	2.01	0.79
1:A:962:THR:CB	1:A:990:LEU:CD2	2.45	0.79
1:D:349:LYS:O	1:D:372:VAL:O	2.01	0.79
1:B:962:THR:CG2	1:B:990:LEU:HD23	2.14	0.78
1:B:962:THR:CB	1:B:990:LEU:CD2	2.33	0.78
1:B:480:TYR:O	1:B:521:LYS:O	2.01	0.78
1:D:295:ASN:ND2	1:D:297:HIS:O	2.16	0.78
1:D:480:TYR:O	1:D:521:LYS:O	2.01	0.78
1:B:295:ASN:ND2	1:B:297:HIS:O	2.16	0.78
1:B:765:TRP:O	1:B:784:ALA:O	2.01	0.78
1:A:127:SER:O	1:A:209:LYS:NZ	2.17	0.78
1:A:962:THR:CG2	1:A:990:LEU:HD23	2.13	0.78
1:B:962:THR:CG2	1:B:990:LEU:HD21	2.10	0.78
1:C:127:SER:O	1:C:209:LYS:NZ	2.17	0.78

Continued on next page...

Continued from previous page...

Atom-1	Atom-2	Interatomic distance (Å)	Clash overlap (Å)
1:B:349:LYS:O	1:B:372:VAL:O	2.01	0.77
1:A:962:THR:CG2	1:A:990:LEU:CD2	2.63	0.77
1:D:765:TRP:O	1:D:784:ALA:O	2.01	0.77
1:D:962:THR:CG2	1:D:990:LEU:CD2	2.63	0.77
1:C:363:ILE:O	1:C:411:THR:OG1	2.03	0.76
1:A:363:ILE:O	1:A:411:THR:OG1	2.03	0.76
1:B:957:SER:HB3	1:B:1239:THR:OG1	1.85	0.76
1:D:966:LEU:CD2	1:D:1004:ALA:HB2	2.16	0.76
1:A:381:ASN:N	1:A:399:THR:O	2.19	0.75
1:C:381:ASN:N	1:C:399:THR:O	2.19	0.75
1:B:636:ASP:O	1:D:1072:GLN:NE2	2.19	0.75
4:A:2004:NAG:O7	4:A:2004:NAG:O3	2.05	0.75
1:D:480:TYR:O	1:D:522:GLY:HA2	1.87	0.75
1:B:958:ALA:HA	1:B:989:TYR:OH	1.86	0.74
2:K:2:NAG:O7	2:K:2:NAG:O3	2.05	0.74
1:C:480:TYR:O	1:C:522:GLY:HA2	1.87	0.74
1:D:1129:GLU:OE1	1:D:1162:LYS:NZ	2.21	0.74
1:A:480:TYR:O	1:A:522:GLY:HA2	1.87	0.74
1:B:480:TYR:O	1:B:522:GLY:HA2	1.87	0.74
2:E:2:NAG:O7	2:E:2:NAG:O3	2.05	0.74
1:A:480:TYR:O	1:A:521:LYS:O	2.06	0.74
1:C:955:LEU:HB3	1:C:1298:LEU:HD22	1.70	0.74
1:B:1075:LYS:NZ	1:B:1079:CYS:O	2.20	0.74
1:B:1072:GLN:NE2	1:D:636:ASP:O	2.20	0.73
1:C:307:LYS:O	1:C:310:GLN:NE2	2.21	0.73
1:D:966:LEU:HD22	1:D:1004:ALA:HB2	1.68	0.73
1:B:1129:GLU:OE1	1:B:1162:LYS:NZ	2.21	0.73
3:H:1:NAG:C1	3:H:1:NAG:H82	2.19	0.73
1:B:648:VAL:HG22	1:B:658:VAL:HG13	1.69	0.73
1:C:955:LEU:HB2	1:C:1298:LEU:HD13	1.70	0.73
1:D:363:ILE:O	1:D:411:THR:OG1	2.02	0.73
1:D:1075:LYS:NZ	1:D:1079:CYS:O	2.20	0.73
2:G:2:NAG:O7	2:G:2:NAG:O3	2.05	0.73
1:B:363:ILE:O	1:B:411:THR:OG1	2.03	0.73
1:A:1117:THR:O	1:A:1122:ARG:NH1	2.22	0.73
1:C:962:THR:CG2	1:C:990:LEU:HD23	2.18	0.73
1:C:1117:THR:O	1:C:1122:ARG:NH1	2.22	0.72
1:A:307:LYS:O	1:A:310:GLN:NE2	2.21	0.72
1:C:480:TYR:O	1:C:521:LYS:O	2.06	0.72
1:D:648:VAL:HG22	1:D:658:VAL:HG13	1.69	0.72
3:L:1:NAG:H82	3:L:1:NAG:C1	2.19	0.72

Continued on next page...

Continued from previous page...

Atom-1	Atom-2	Interatomic distance (Å)	Clash overlap (Å)
1:A:536:PRO:O	1:A:560:VAL:N	2.23	0.72
1:D:962:THR:CG2	1:D:990:LEU:HD21	2.20	0.72
1:A:507:ARG:NH2	1:A:532:SER:O	2.23	0.71
1:D:1184:GLU:OE1	1:D:1187:GLN:NE2	2.23	0.71
3:H:1:NAG:H83	3:H:1:NAG:H3	1.73	0.71
1:A:966:LEU:CD2	1:A:1004:ALA:HB2	2.20	0.71
1:C:507:ARG:NH2	1:C:532:SER:O	2.23	0.71
1:D:639:ASN:ND2	1:D:641:ASP:OD1	2.23	0.71
1:D:415:MET:SD	1:D:416:GLY:N	2.64	0.71
1:A:1242:GLN:NE2	1:A:1243:ASN:O	2.24	0.71
1:D:174:ARG:NH1	1:D:177:GLN:OE1	2.23	0.71
1:D:507:ARG:NH2	1:D:532:SER:O	2.23	0.71
1:B:507:ARG:NH2	1:B:532:SER:O	2.23	0.71
4:C:2004:NAG:O7	4:C:2004:NAG:O3	2.05	0.71
1:B:174:ARG:NH1	1:B:177:GLN:OE1	2.23	0.71
1:B:1184:GLU:OE1	1:B:1187:GLN:NE2	2.23	0.71
1:C:493:LEU:HD11	1:C:546:LEU:HD23	1.73	0.71
1:C:536:PRO:O	1:C:560:VAL:N	2.23	0.71
3:H:1:NAG:H83	3:H:2:NAG:H82	1.73	0.70
1:B:639:ASN:ND2	1:B:641:ASP:OD1	2.23	0.70
1:B:966:LEU:CD2	1:B:1004:ALA:CB	2.69	0.70
1:C:1242:GLN:NE2	1:C:1243:ASN:O	2.24	0.70
1:B:415:MET:SD	1:B:416:GLY:N	2.64	0.70
1:C:295:ASN:ND2	1:C:297:HIS:O	2.24	0.70
1:C:471:GLY:N	1:C:530:VAL:O	2.24	0.70
1:D:958:ALA:HA	1:D:989:TYR:OH	1.91	0.70
1:B:381:ASN:N	1:B:399:THR:O	2.25	0.70
1:C:1074:GLN:NE2	1:C:1075:LYS:O	2.24	0.70
1:A:295:ASN:ND2	1:A:297:HIS:O	2.24	0.70
1:A:1074:GLN:NE2	1:A:1075:LYS:O	2.24	0.70
1:D:381:ASN:N	1:D:399:THR:O	2.25	0.70
1:A:471:GLY:N	1:A:530:VAL:O	2.24	0.69
1:C:962:THR:CG2	1:C:990:LEU:CD2	2.70	0.69
1:B:471:GLY:N	1:B:530:VAL:O	2.25	0.69
1:C:345:ARG:O	1:C:440:GLU:N	2.25	0.69
1:A:345:ARG:O	1:A:440:GLU:N	2.25	0.69
1:D:270:ARG:NH2	1:D:315:GLU:O	2.25	0.69
1:D:767:ALA:O	1:D:782:SER:O	2.11	0.69
1:D:1117:THR:O	1:D:1122:ARG:NH1	2.26	0.69
1:B:1117:THR:O	1:B:1122:ARG:NH1	2.26	0.69
1:D:471:GLY:N	1:D:530:VAL:O	2.25	0.69

Continued on next page...

Continued from previous page...

Atom-1	Atom-2	Interatomic distance (Å)	Clash overlap (Å)
1:A:493:LEU:HD11	1:A:546:LEU:HD23	1.73	0.68
3:L:1:NAG:H83	3:L:2:NAG:H82	1.75	0.68
1:D:536:PRO:O	1:D:560:VAL:N	2.25	0.68
1:B:536:PRO:O	1:B:560:VAL:N	2.25	0.68
1:C:96:SER:O	1:C:124:ASN:ND2	2.27	0.68
1:C:955:LEU:HD23	1:C:958:ALA:HB3	1.75	0.68
1:A:1180:SER:OG	1:A:1233:ASN:O	2.11	0.68
1:C:962:THR:CB	1:C:990:LEU:CD2	2.45	0.68
1:D:955:LEU:HD23	1:D:958:ALA:HB3	1.76	0.68
4:D:2001:NAG:H3	4:D:2001:NAG:H83	1.75	0.68
1:B:270:ARG:NH2	1:B:315:GLU:O	2.25	0.68
1:C:966:LEU:CD2	1:C:1004:ALA:HB2	2.23	0.68
1:D:938:ASN:ND2	1:D:1335:GLU:OE2	2.27	0.67
1:D:601:ASP:OD1	1:D:761:THR:OG1	2.11	0.67
1:B:823:ARG:NH1	1:B:824:VAL:O	2.28	0.67
1:C:809:THR:OG1	1:C:857:SER:OG	2.13	0.67
1:B:767:ALA:O	1:B:782:SER:O	2.11	0.67
1:A:415:MET:SD	1:A:416:GLY:N	2.67	0.67
1:A:962:THR:HG21	1:A:990:LEU:HD23	1.74	0.67
1:B:601:ASP:OD1	1:B:761:THR:OG1	2.11	0.67
1:A:96:SER:O	1:A:124:ASN:ND2	2.27	0.67
1:C:415:MET:SD	1:C:416:GLY:N	2.67	0.67
1:D:961:ASN:HD21	1:D:1247:GLY:CA	2.07	0.67
1:A:809:THR:OG1	1:A:857:SER:OG	2.13	0.66
1:B:938:ASN:ND2	1:B:1335:GLU:OE2	2.27	0.66
1:B:955:LEU:HD23	1:B:958:ALA:HB3	1.76	0.66
1:A:955:LEU:HD23	1:A:958:ALA:HB3	1.76	0.66
1:B:963:GLN:HE21	1:B:963:GLN:HA	1.61	0.66
1:D:823:ARG:NH1	1:D:824:VAL:O	2.28	0.66
1:D:877:LEU:O	1:D:889:SER:OG	2.13	0.66
1:A:199:PHE:O	1:A:203:TYR:OH	2.07	0.66
1:D:963:GLN:HE21	1:D:963:GLN:HA	1.61	0.66
1:A:354:LYS:NZ	1:A:463:PRO:O	2.27	0.66
1:A:963:GLN:HE21	1:A:963:GLN:HA	1.61	0.66
1:C:963:GLN:HE21	1:C:963:GLN:HA	1.61	0.66
1:C:966:LEU:HD22	1:C:1004:ALA:HB2	1.77	0.66
1:A:351:SER:OG	1:A:352:PHE:N	2.29	0.66
1:A:363:ILE:HD12	1:A:364:PRO:HD2	1.78	0.66
1:D:345:ARG:O	1:D:440:GLU:N	2.29	0.66
1:B:354:LYS:NZ	1:B:463:PRO:O	2.22	0.65
1:B:966:LEU:HD21	1:B:1004:ALA:HB2	1.78	0.65

Continued on next page...

Continued from previous page...

Atom-1	Atom-2	Interatomic distance (Å)	Clash overlap (Å)
1:C:351:SER:OG	1:C:352:PHE:N	2.29	0.65
1:D:354:LYS:NZ	1:D:463:PRO:O	2.22	0.65
1:D:493:LEU:HD21	1:D:546:LEU:CD2	2.27	0.65
1:D:962:THR:CG2	1:D:990:LEU:HD23	2.26	0.65
1:B:506:VAL:HG21	1:B:533:ASP:O	1.96	0.65
1:C:962:THR:HG21	1:C:990:LEU:HD23	1.78	0.65
1:B:345:ARG:O	1:B:440:GLU:N	2.29	0.65
1:C:974:GLU:OE1	1:C:1088:ASN:ND2	2.30	0.65
1:A:578:LEU:O	1:A:580:ALA:N	2.29	0.64
1:D:506:VAL:HG21	1:D:533:ASP:O	1.97	0.64
1:A:962:THR:HB	1:A:990:LEU:HD21	0.76	0.64
1:C:1180:SER:OG	1:C:1233:ASN:O	2.11	0.64
1:A:974:GLU:OE1	1:A:1088:ASN:ND2	2.30	0.64
1:C:363:ILE:HD12	1:C:364:PRO:HD2	1.78	0.64
1:A:270:ARG:NE	1:A:316:TYR:O	2.30	0.64
1:B:960:GLN:HE21	1:B:960:GLN:CA	2.11	0.64
1:B:962:THR:HG21	1:B:990:LEU:HD23	1.78	0.64
1:D:351:SER:OG	1:D:352:PHE:N	2.31	0.64
1:B:493:LEU:HD21	1:B:546:LEU:CD2	2.27	0.64
1:A:960:GLN:HE21	1:A:960:GLN:CA	2.11	0.64
1:A:1139:ASP:O	1:A:1143:HIS:NE2	2.31	0.64
1:C:1139:ASP:O	1:C:1143:HIS:NE2	2.31	0.64
1:D:1059:ASP:OD2	1:D:1062:HIS:ND1	2.30	0.64
1:B:1059:ASP:OD2	1:B:1062:HIS:ND1	2.31	0.63
1:B:1242:GLN:NE2	1:B:1243:ASN:O	2.31	0.63
1:C:199:PHE:O	1:C:203:TYR:OH	2.07	0.63
1:D:1191:ALA:HB1	1:D:1192:PRO:HD2	1.80	0.63
1:C:578:LEU:O	1:C:580:ALA:N	2.29	0.63
3:L:1:NAG:H83	3:L:1:NAG:H3	1.81	0.63
1:C:94:SER:OG	1:C:124:ASN:ND2	2.31	0.63
1:C:51:LEU:O	1:C:82:ASP:N	2.32	0.63
1:D:1242:GLN:NE2	1:D:1243:ASN:O	2.31	0.63
1:A:94:SER:OG	1:A:124:ASN:ND2	2.31	0.63
1:C:961:ASN:HD21	1:C:1247:GLY:HA2	1.64	0.63
1:A:51:LEU:O	1:A:82:ASP:N	2.32	0.62
1:B:1191:ALA:HB1	1:B:1192:PRO:HD2	1.80	0.62
1:D:953:ASP:OD1	1:D:1236:LYS:HE3	1.97	0.62
1:B:935:LEU:HD13	1:B:1330:TYR:CE1	2.34	0.62
1:D:962:THR:HB	1:D:990:LEU:HD21	0.73	0.62
1:D:935:LEU:HD13	1:D:1330:TYR:CE1	2.34	0.62
1:A:174:ARG:NH1	1:A:177:GLN:OE1	2.32	0.62

Continued on next page...

Continued from previous page...

Atom-1	Atom-2	Interatomic distance (Å)	Clash overlap (Å)
1:A:966:LEU:HD22	1:A:1004:ALA:HB2	1.80	0.62
1:B:535:ALA:HB1	1:B:536:PRO:HD2	1.82	0.62
1:C:174:ARG:NH1	1:C:177:GLN:OE1	2.32	0.62
1:C:270:ARG:NE	1:C:316:TYR:O	2.30	0.62
1:A:270:ARG:O	1:A:285:ALA:HB3	2.00	0.62
1:B:351:SER:OG	1:B:352:PHE:N	2.31	0.62
1:B:908:GLU:O	1:B:1331:ASN:ND2	2.33	0.62
1:C:785:SER:O	1:C:787:ARG:N	2.33	0.61
1:D:966:LEU:CD2	1:D:1004:ALA:CB	2.78	0.61
1:D:962:THR:CB	1:D:990:LEU:CD2	2.42	0.61
1:D:535:ALA:HB1	1:D:536:PRO:HD2	1.82	0.61
1:D:908:GLU:O	1:D:1331:ASN:ND2	2.33	0.61
1:C:270:ARG:O	1:C:285:ALA:HB3	2.00	0.61
1:A:785:SER:O	1:A:787:ARG:N	2.33	0.61
1:D:461:LEU:HD11	1:D:542:ILE:CG2	2.31	0.61
1:D:459:VAL:HG23	1:D:552:ILE:HD12	1.83	0.61
1:C:960:GLN:HE21	1:C:960:GLN:CA	2.11	0.61
3:F:2:NAG:H3	3:F:2:NAG:C8	2.22	0.61
1:C:957:SER:HB3	1:C:1239:THR:OG1	2.00	0.60
1:B:459:VAL:HG23	1:B:552:ILE:HD12	1.83	0.60
1:B:962:THR:HB	1:B:990:LEU:HD21	0.66	0.60
1:B:464:MET:SD	1:B:466:HIS:NE2	2.75	0.60
1:C:275:ALA:HB1	1:C:281:GLU:HB3	1.83	0.60
1:A:468:LEU:HD12	1:A:469:PRO:HD2	1.83	0.60
1:C:954:ILE:HD12	1:C:954:ILE:O	2.01	0.60
1:D:576:GLN:N	1:D:576:GLN:OE1	2.35	0.60
1:D:960:GLN:HE21	1:D:960:GLN:CA	2.11	0.60
4:D:2001:NAG:C1	4:D:2001:NAG:C8	2.79	0.60
1:B:461:LEU:HD11	1:B:542:ILE:CG2	2.31	0.60
1:B:576:GLN:N	1:B:576:GLN:OE1	2.35	0.60
1:A:946:ALA:HB3	1:A:1305:LEU:HB2	1.83	0.60
1:D:954:ILE:HD12	1:D:954:ILE:O	2.01	0.60
3:F:2:NAG:H83	3:F:2:NAG:C3	2.23	0.60
1:A:457:SER:OG	1:A:483:ASN:N	2.34	0.59
1:C:168:GLN:HA	1:C:174:ARG:HA	1.84	0.59
1:D:563:CYS:O	1:D:619:TYR:OH	2.20	0.59
1:D:764:GLU:N	1:D:764:GLU:OE1	2.35	0.59
1:A:954:ILE:HD12	1:A:954:ILE:O	2.01	0.59
1:A:957:SER:HB3	1:A:1239:THR:OG1	2.02	0.59
1:B:602:GLN:O	1:B:763:THR:OG1	2.19	0.59
1:B:1180:SER:OG	1:B:1233:ASN:O	2.15	0.59

Continued on next page...

Continued from previous page...

Atom-1	Atom-2	Interatomic distance (Å)	Clash overlap (Å)
1:C:946:ALA:HB3	1:C:1305:LEU:HB2	1.83	0.59
1:D:602:GLN:O	1:D:763:THR:OG1	2.19	0.59
1:D:691:GLN:O	1:D:694:GLN:NE2	2.35	0.59
3:H:1:NAG:H3	3:H:1:NAG:C8	2.32	0.59
1:A:125:GLU:OE1	1:A:125:GLU:N	2.36	0.59
1:B:764:GLU:N	1:B:764:GLU:OE1	2.35	0.59
1:C:354:LYS:NZ	1:C:463:PRO:O	2.27	0.59
1:C:468:LEU:HD12	1:C:469:PRO:HD2	1.83	0.59
1:D:883:CYS:SG	1:D:884:GLY:N	2.75	0.59
1:D:1204:ALA:HB1	1:D:1207:GLU:CG	2.33	0.59
1:C:457:SER:OG	1:C:483:ASN:N	2.34	0.59
1:D:464:MET:SD	1:D:466:HIS:NE2	2.75	0.59
1:B:957:SER:CB	1:B:1239:THR:OG1	2.50	0.59
1:C:965:LEU:HD23	1:C:966:LEU:H	1.68	0.59
1:A:782:SER:OG	1:A:783:THR:N	2.33	0.59
1:C:318:MET:O	1:C:339:GLN:CA	2.50	0.59
1:C:429:SER:O	1:D:1195:HIS:NE2	2.36	0.59
1:D:965:LEU:HD23	1:D:966:LEU:H	1.68	0.59
1:A:275:ALA:HB1	1:A:281:GLU:HB3	1.83	0.59
1:B:883:CYS:SG	1:B:884:GLY:N	2.76	0.59
1:B:461:LEU:HD11	1:B:542:ILE:HG22	1.83	0.59
1:B:954:ILE:HD12	1:B:954:ILE:O	2.01	0.59
1:A:458:PHE:CE2	1:A:481:ILE:HD12	2.38	0.59
1:B:691:GLN:O	1:B:694:GLN:NE2	2.35	0.59
1:A:730:THR:HG23	1:A:731:VAL:HG13	1.85	0.58
4:A:2001:NAG:H3	4:A:2001:NAG:H83	1.85	0.58
1:B:966:LEU:HD22	1:B:1004:ALA:CB	2.31	0.58
1:D:461:LEU:HD11	1:D:542:ILE:HG22	1.83	0.58
1:B:1204:ALA:HB1	1:B:1207:GLU:CG	2.33	0.58
1:A:1298:LEU:O	1:A:1298:LEU:HD12	2.03	0.58
1:C:730:THR:HG23	1:C:731:VAL:HG13	1.85	0.58
1:A:318:MET:O	1:A:339:GLN:CA	2.50	0.58
1:B:563:CYS:O	1:B:619:TYR:OH	2.20	0.58
1:C:125:GLU:OE1	1:C:125:GLU:N	2.36	0.58
1:C:958:ALA:HA	1:C:989:TYR:OH	2.04	0.58
4:D:2001:NAG:C1	4:D:2001:NAG:H82	2.33	0.58
1:D:955:LEU:CB	1:D:1298:LEU:HD13	2.32	0.58
1:C:458:PHE:CE2	1:C:481:ILE:HD12	2.38	0.58
3:L:2:NAG:H82	3:L:2:NAG:C1	2.34	0.58
1:A:339:GLN:OE1	1:A:339:GLN:N	2.37	0.58
1:D:51:LEU:O	1:D:82:ASP:N	2.37	0.58

Continued on next page...

Continued from previous page...

Atom-1	Atom-2	Interatomic distance (Å)	Clash overlap (Å)
1:B:499:ILE:HD11	1:B:528:ILE:HG21	1.86	0.57
1:C:962:THR:HB	1:C:990:LEU:HD21	0.75	0.57
1:D:41:THR:OG1	1:D:42:GLU:OE1	2.19	0.57
1:A:965:LEU:HD23	1:A:966:LEU:H	1.68	0.57
4:C:2004:NAG:HO3	4:C:2004:NAG:C7	2.12	0.57
1:A:168:GLN:HA	1:A:174:ARG:HA	1.84	0.57
1:B:51:LEU:O	1:B:82:ASP:N	2.37	0.57
1:D:318:MET:O	1:D:339:GLN:CA	2.52	0.57
3:H:2:NAG:H83	3:H:2:NAG:C3	2.21	0.57
1:C:782:SER:OG	1:C:783:THR:N	2.33	0.57
1:D:1039:THR:O	1:D:1042:THR:OG1	2.21	0.57
1:D:499:ILE:HD11	1:D:528:ILE:HG21	1.86	0.57
1:D:351:SER:C	1:D:370:ARG:O	2.43	0.57
1:A:187:LEU:HD11	1:A:743:LEU:HD21	1.86	0.57
1:B:267:SER:OG	1:B:321:HIS:O	2.15	0.57
1:B:965:LEU:HD23	1:B:966:LEU:H	1.68	0.57
1:C:187:LEU:HD11	1:C:743:LEU:HD21	1.86	0.57
1:B:1039:THR:O	1:B:1042:THR:OG1	2.21	0.57
1:A:429:SER:O	1:B:1195:HIS:NE2	2.36	0.57
1:B:966:LEU:HD21	1:B:1004:ALA:CB	2.33	0.57
1:B:155:PHE:HB3	1:B:778:LEU:HD22	1.87	0.56
1:C:963:GLN:HA	1:C:963:GLN:NE2	2.21	0.56
1:D:155:PHE:HB3	1:D:778:LEU:HD22	1.87	0.56
1:B:351:SER:C	1:B:370:ARG:O	2.43	0.56
1:C:966:LEU:CD2	1:C:1004:ALA:CB	2.84	0.56
1:D:963:GLN:HA	1:D:963:GLN:NE2	2.21	0.56
1:A:966:LEU:HD21	1:A:1004:ALA:HB2	1.85	0.56
1:C:347:ILE:O	1:C:348:THR:OG1	2.24	0.56
1:D:157:PRO:HB3	1:D:772:LEU:HD22	1.87	0.56
1:B:41:THR:OG1	1:B:42:GLU:OE1	2.19	0.56
1:B:491:LYS:O	1:B:515:VAL:HG22	2.06	0.56
1:B:767:ALA:O	1:B:783:THR:HA	2.05	0.56
1:C:339:GLN:OE1	1:C:339:GLN:N	2.37	0.56
1:D:138:TYR:CZ	1:D:144:VAL:HG23	2.41	0.56
1:D:767:ALA:O	1:D:783:THR:HA	2.05	0.56
1:A:351:SER:C	1:A:370:ARG:O	2.44	0.56
1:B:127:SER:O	1:B:209:LYS:NZ	2.38	0.56
1:B:138:TYR:CZ	1:B:144:VAL:HG23	2.41	0.56
1:C:42:GLU:N	1:C:91:VAL:O	2.39	0.56
1:B:1128:LEU:HD22	1:B:1150:LEU:HD13	1.88	0.56
1:D:1128:LEU:HD22	1:D:1150:LEU:HD13	1.88	0.56

Continued on next page...

Continued from previous page...

Atom-1	Atom-2	Interatomic distance (Å)	Clash overlap (Å)
3:L:2:NAG:H3	3:L:2:NAG:C8	2.21	0.56
1:A:966:LEU:CD2	1:A:1004:ALA:CB	2.84	0.55
1:C:1039:THR:O	1:C:1042:THR:OG1	2.21	0.55
1:D:966:LEU:HD22	1:D:1004:ALA:CB	2.36	0.55
1:A:961:ASN:HD21	1:A:1247:GLY:HA2	1.70	0.55
1:B:962:THR:HG21	1:B:990:LEU:CD2	2.35	0.55
1:A:952:GLY:HA3	1:A:1297:ARG:HH12	1.72	0.55
1:C:499:ILE:HG13	1:C:540:LEU:HD13	1.88	0.55
1:D:491:LYS:O	1:D:515:VAL:HG22	2.06	0.55
1:A:347:ILE:O	1:A:348:THR:OG1	2.24	0.55
1:A:1039:THR:O	1:A:1042:THR:OG1	2.21	0.55
1:B:157:PRO:HB3	1:B:772:LEU:HD22	1.87	0.55
1:D:961:ASN:CG	1:D:1247:GLY:H	2.09	0.55
1:C:351:SER:C	1:C:370:ARG:O	2.44	0.55
1:D:267:SER:OG	1:D:321:HIS:O	2.15	0.55
3:L:2:NAG:H83	3:L:2:NAG:C3	2.21	0.55
1:A:42:GLU:N	1:A:91:VAL:O	2.39	0.55
1:A:141:GLY:N	1:A:195:SER:O	2.40	0.55
1:A:67:VAL:HG13	1:A:68:ARG:H	1.72	0.55
1:C:67:VAL:HG13	1:C:68:ARG:H	1.72	0.54
1:B:782:SER:OG	1:B:783:THR:N	2.40	0.54
1:D:141:GLY:N	1:D:195:SER:O	2.39	0.54
1:C:1106:THR:HG21	1:C:1128:LEU:HD11	1.90	0.54
1:A:955:LEU:HB3	1:A:1298:LEU:HD22	1.90	0.54
1:D:965:LEU:HD21	1:D:967:GLN:HE21	1.73	0.54
1:B:141:GLY:N	1:B:195:SER:O	2.39	0.54
1:D:957:SER:CB	1:D:1239:THR:OG1	2.55	0.54
1:D:1301:GLN:N	1:D:1301:GLN:OE1	2.41	0.54
1:A:963:GLN:HA	1:A:963:GLN:NE2	2.21	0.54
1:B:318:MET:O	1:B:339:GLN:CA	2.52	0.54
1:B:1259:HIS:O	1:B:1262:SER:OG	2.22	0.54
1:C:461:LEU:N	1:C:554:ASP:OD2	2.40	0.54
1:C:965:LEU:HD21	1:C:967:GLN:HE21	1.73	0.54
1:C:428:ARG:NH2	1:C:440:GLU:OE2	2.41	0.54
3:F:2:NAG:C8	3:F:2:NAG:C1	2.86	0.54
1:A:960:GLN:NE2	1:A:960:GLN:CA	2.71	0.54
1:B:1301:GLN:N	1:B:1301:GLN:OE1	2.41	0.54
1:D:67:VAL:HG13	1:D:68:ARG:H	1.73	0.54
1:D:819:PRO:HA	1:D:850:ALA:HB2	1.90	0.54
1:A:461:LEU:N	1:A:554:ASP:OD2	2.40	0.54
1:B:963:GLN:HA	1:B:963:GLN:NE2	2.21	0.54

Continued on next page...

Continued from previous page...

Atom-1	Atom-2	Interatomic distance (Å)	Clash overlap (Å)
1:D:243:GLU:O	1:D:306:THR:OG1	2.24	0.54
3:L:2:NAG:C1	3:L:2:NAG:C8	2.86	0.54
1:A:499:ILE:HG13	1:A:540:LEU:HD13	1.88	0.53
1:D:739:TRP:O	1:D:740:ILE:HD13	2.09	0.53
1:A:1106:THR:HG21	1:A:1128:LEU:HD11	1.90	0.53
1:A:1185:ARG:NH1	1:A:1201:ALA:HB1	2.24	0.53
1:B:243:GLU:O	1:B:306:THR:OG1	2.24	0.53
1:B:952:GLY:O	1:B:1297:ARG:CZ	2.54	0.53
1:B:960:GLN:NE2	1:B:960:GLN:CA	2.71	0.53
1:C:138:TYR:CE2	1:C:144:VAL:HG23	2.44	0.53
1:C:648:VAL:HG21	1:C:657:PRO:O	2.08	0.53
1:C:1185:ARG:NH1	1:C:1201:ALA:HB1	2.24	0.53
1:D:127:SER:O	1:D:209:LYS:NZ	2.38	0.53
1:D:962:THR:HG21	1:D:990:LEU:HD23	1.90	0.53
1:B:360:ARG:HG3	1:B:451:VAL:HG12	1.91	0.53
1:B:739:TRP:O	1:B:740:ILE:HD13	2.09	0.53
1:C:951:LEU:HD12	1:C:953:ASP:HB3	1.90	0.53
1:D:270:ARG:O	1:D:285:ALA:HB3	2.08	0.53
3:L:1:NAG:H3	3:L:1:NAG:C8	2.39	0.53
1:B:965:LEU:HD21	1:B:967:GLN:HE21	1.73	0.53
1:D:782:SER:OG	1:D:783:THR:N	2.40	0.53
1:D:951:LEU:HD12	1:D:953:ASP:HB3	1.90	0.53
1:A:648:VAL:HG21	1:A:657:PRO:O	2.08	0.53
1:A:965:LEU:HD21	1:A:967:GLN:HE21	1.73	0.53
1:B:819:PRO:HA	1:B:850:ALA:HB2	1.90	0.53
1:D:966:LEU:HD21	1:D:1004:ALA:HB2	1.89	0.53
1:A:138:TYR:CE2	1:A:144:VAL:HG23	2.44	0.53
1:A:230:GLU:HB2	1:A:606:LEU:HD21	1.90	0.53
4:C:2003:NAG:H83	4:C:2003:NAG:H3	1.91	0.53
4:A:2003:NAG:H3	4:A:2003:NAG:H83	1.91	0.53
1:B:579:PRO:HB3	1:B:731:VAL:HG12	1.92	0.53
1:D:360:ARG:HG3	1:D:451:VAL:HG12	1.91	0.53
1:B:270:ARG:O	1:B:285:ALA:HB3	2.08	0.52
3:F:2:NAG:C1	3:F:2:NAG:H82	2.38	0.52
1:D:1079:CYS:N	1:D:1127:CYS:SG	2.83	0.52
1:D:1335:GLU:N	1:D:1335:GLU:OE1	2.42	0.52
1:C:230:GLU:HB2	1:C:606:LEU:HD21	1.90	0.52
1:D:737:GLU:O	1:D:738:THR:OG1	2.28	0.52
1:D:1259:HIS:O	1:D:1262:SER:OG	2.22	0.52
1:B:67:VAL:HG13	1:B:68:ARG:H	1.73	0.52
1:D:56:GLU:N	1:D:56:GLU:OE2	2.43	0.52

Continued on next page...

Continued from previous page...

Atom-1	Atom-2	Interatomic distance (Å)	Clash overlap (Å)
1:A:353:VAL:HG23	1:A:354:LYS:H	1.74	0.52
1:B:955:LEU:CB	1:B:1298:LEU:HD13	2.37	0.51
1:B:1295:ASN:OD1	1:B:1296:ASN:N	2.43	0.51
1:B:1335:GLU:OE1	1:B:1335:GLU:N	2.42	0.51
1:D:579:PRO:HB3	1:D:731:VAL:HG12	1.92	0.51
1:B:1079:CYS:N	1:B:1127:CYS:SG	2.83	0.51
1:C:141:GLY:N	1:C:195:SER:O	2.40	0.51
1:A:428:ARG:NH2	1:A:440:GLU:OE2	2.41	0.51
1:A:951:LEU:HD12	1:A:953:ASP:HB3	1.90	0.51
1:C:353:VAL:HG23	1:C:354:LYS:H	1.74	0.51
1:D:1295:ASN:OD1	1:D:1296:ASN:N	2.43	0.51
1:A:468:LEU:HD12	1:A:469:PRO:CD	2.41	0.51
1:A:958:ALA:HA	1:A:989:TYR:OH	2.10	0.51
1:B:951:LEU:HD12	1:B:953:ASP:HB3	1.90	0.51
3:L:2:NAG:C8	3:L:2:NAG:C3	2.86	0.51
1:B:1161:ASP:OD1	1:B:1162:LYS:N	2.44	0.51
1:C:540:LEU:HD12	1:C:541:LEU:N	2.26	0.51
1:D:459:VAL:HG23	1:D:552:ILE:CD1	2.41	0.51
1:B:56:GLU:N	1:B:56:GLU:OE2	2.43	0.51
1:B:946:ALA:HB3	1:B:1305:LEU:HB2	1.92	0.51
1:C:468:LEU:HD12	1:C:469:PRO:CD	2.41	0.51
1:C:953:ASP:OD1	1:C:1236:LYS:HD3	2.11	0.51
1:A:540:LEU:HD12	1:A:541:LEU:N	2.26	0.51
1:B:769:ALA:HB3	1:B:781:SER:HB3	1.92	0.51
1:D:505:ILE:HG22	1:D:506:VAL:N	2.26	0.51
1:D:946:ALA:HB3	1:D:1305:LEU:HB2	1.92	0.51
1:D:960:GLN:NE2	1:D:960:GLN:CA	2.71	0.51
1:B:459:VAL:HG23	1:B:552:ILE:CD1	2.41	0.50
1:C:747:ASN:OD1	1:C:749:ALA:N	2.44	0.50
1:C:960:GLN:NE2	1:C:960:GLN:CA	2.71	0.50
1:D:769:ALA:HB3	1:D:781:SER:HB3	1.92	0.50
3:F:1:NAG:H3	3:F:2:NAG:H82	1.93	0.50
1:B:948:VAL:HG12	1:B:1305:LEU:HD11	1.93	0.50
1:D:1180:SER:OG	1:D:1181:VAL:N	2.44	0.50
1:A:352:PHE:O	1:A:353:VAL:HG13	2.12	0.50
1:B:505:ILE:HG22	1:B:506:VAL:N	2.26	0.50
1:B:1180:SER:OG	1:B:1181:VAL:N	2.44	0.50
1:B:351:SER:HG	1:B:352:PHE:N	2.09	0.50
1:B:737:GLU:O	1:B:738:THR:OG1	2.28	0.50
1:A:823:ARG:HH21	1:A:844:ALA:HB1	1.76	0.50
1:A:271:LYS:O	1:A:316:TYR:HB2	2.12	0.50

Continued on next page...

Continued from previous page...

Atom-1	Atom-2	Interatomic distance (Å)	Clash overlap (Å)
1:A:1295:ASN:OD1	1:A:1296:ASN:N	2.45	0.50
1:B:961:ASN:HD21	1:B:1247:GLY:CA	2.17	0.50
1:B:1202:PRO:O	1:B:1203:SER:OG	2.24	0.50
1:C:1295:ASN:OD1	1:C:1296:ASN:N	2.45	0.50
1:D:1204:ALA:HB1	1:D:1207:GLU:HG2	1.93	0.50
1:B:216:GLU:OE1	1:B:216:GLU:N	2.45	0.50
1:C:823:ARG:HH21	1:C:844:ALA:HB1	1.76	0.50
1:D:948:VAL:HG12	1:D:1305:LEU:HD11	1.93	0.50
1:D:216:GLU:N	1:D:216:GLU:OE1	2.45	0.50
1:C:189:GLN:N	1:C:189:GLN:OE1	2.45	0.49
1:A:917:ASN:N	1:A:917:ASN:OD1	2.46	0.49
1:A:1098:GLU:OE1	1:A:1098:GLU:N	2.44	0.49
1:C:352:PHE:O	1:C:353:VAL:HG13	2.12	0.49
1:C:602:GLN:HG3	1:C:766:LYS:HG2	1.94	0.49
1:C:356:ASP:OD2	1:C:460:HIS:NE2	2.40	0.49
1:A:239:ILE:O	1:A:342:GLU:C	2.51	0.49
1:A:1146:THR:O	1:A:1150:LEU:HD23	2.13	0.49
1:B:351:SER:HG	1:B:352:PHE:H	1.61	0.49
1:B:551:VAL:HG11	1:B:683:ILE:HD13	1.95	0.49
1:A:579:PRO:HG3	1:A:731:VAL:HG12	1.95	0.49
1:A:602:GLN:HG3	1:A:766:LYS:HG2	1.94	0.49
1:B:117:ARG:NH2	1:D:1074:GLN:OE1	2.43	0.49
1:D:864:SER:OG	1:D:865:LEU:N	2.46	0.49
1:B:352:PHE:O	1:B:353:VAL:HG13	2.13	0.48
1:C:80:GLU:N	1:C:80:GLU:OE1	2.46	0.48
1:C:966:LEU:HD22	1:C:1004:ALA:CB	2.43	0.48
1:D:734:TYR:HB3	1:D:758:VAL:HG23	1.95	0.48
1:B:199:PHE:O	1:B:203:TYR:OH	2.20	0.48
1:B:270:ARG:NH1	1:B:309:PHE:O	2.47	0.48
1:B:955:LEU:HD23	1:B:958:ALA:CB	2.43	0.48
1:B:1204:ALA:HB1	1:B:1207:GLU:HG2	1.93	0.48
1:C:239:ILE:O	1:C:342:GLU:C	2.51	0.48
1:C:271:LYS:O	1:C:316:TYR:HB2	2.12	0.48
1:C:579:PRO:HG3	1:C:731:VAL:HG12	1.95	0.48
1:C:822:ILE:HG23	1:C:887:VAL:CG2	2.43	0.48
1:D:238:ILE:HG23	1:D:342:GLU:HB2	1.95	0.48
1:A:80:GLU:N	1:A:80:GLU:OE1	2.46	0.48
1:A:955:LEU:HD23	1:A:958:ALA:CB	2.43	0.48
1:A:1125:LEU:HA	1:A:1128:LEU:HD12	1.94	0.48
1:C:39:LEU:HD12	1:C:120:VAL:HG11	1.95	0.48
2:E:2:NAG:HO3	2:E:2:NAG:C7	2.18	0.48

Continued on next page...

Continued from previous page...

Atom-1	Atom-2	Interatomic distance (Å)	Clash overlap (Å)
1:C:819:PRO:HA	1:C:850:ALA:HB2	1.95	0.48
1:A:747:ASN:OD1	1:A:749:ALA:N	2.44	0.48
1:A:822:ILE:HG23	1:A:887:VAL:CG2	2.43	0.48
1:C:917:ASN:OD1	1:C:917:ASN:N	2.46	0.48
1:D:1161:ASP:OD1	1:D:1162:LYS:N	2.44	0.48
1:A:1185:ARG:O	1:A:1187:GLN:N	2.40	0.48
1:B:1074:GLN:OE1	1:D:117:ARG:NH2	2.44	0.48
1:D:765:TRP:HB2	1:D:785:SER:O	2.14	0.48
1:A:39:LEU:HD12	1:A:120:VAL:HG11	1.95	0.48
1:D:270:ARG:NH1	1:D:309:PHE:O	2.47	0.48
1:D:804:ARG:NH2	1:D:863:LYS:O	2.47	0.48
1:C:966:LEU:HD21	1:C:1004:ALA:HB2	1.93	0.48
1:A:966:LEU:HD21	1:A:1004:ALA:CB	2.44	0.48
1:B:969:PRO:O	1:B:1014:ARG:NH1	2.47	0.48
1:C:491:LYS:O	1:C:515:VAL:HG22	2.14	0.48
1:D:551:VAL:HG11	1:D:683:ILE:HD13	1.95	0.48
1:C:1125:LEU:HA	1:C:1128:LEU:HD12	1.94	0.48
1:C:1253:ASP:N	1:C:1253:ASP:OD1	2.47	0.48
1:A:829:GLU:O	1:A:871:THR:OG1	2.30	0.47
1:A:979:LEU:O	1:A:983:ASN:ND2	2.47	0.47
1:A:1253:ASP:OD1	1:A:1253:ASP:N	2.47	0.47
1:B:238:ILE:HG23	1:B:342:GLU:HB2	1.96	0.47
1:B:734:TYR:HB3	1:B:758:VAL:HG23	1.95	0.47
1:C:458:PHE:HE2	1:C:481:ILE:HD12	1.79	0.47
1:C:1185:ARG:O	1:C:1187:GLN:N	2.39	0.47
1:A:491:LYS:O	1:A:515:VAL:HG22	2.14	0.47
1:A:854:GLN:NE2	1:A:855:THR:O	2.48	0.47
1:A:960:GLN:NE2	1:A:961:ASN:H	2.12	0.47
1:B:39:LEU:HD12	1:B:120:VAL:HG11	1.96	0.47
1:C:954:ILE:HG22	1:C:1297:ARG:NH2	2.29	0.47
1:B:864:SER:OG	1:B:865:LEU:N	2.46	0.47
1:C:563:CYS:O	1:C:619:TYR:OH	2.26	0.47
1:A:819:PRO:HA	1:A:850:ALA:HB2	1.95	0.47
1:C:960:GLN:NE2	1:C:961:ASN:H	2.12	0.47
1:C:1146:THR:O	1:C:1150:LEU:HD23	2.13	0.47
1:D:39:LEU:HD12	1:D:120:VAL:HG11	1.96	0.47
1:D:960:GLN:NE2	1:D:961:ASN:H	2.12	0.47
1:D:966:LEU:HD21	1:D:1004:ALA:CB	2.44	0.47
3:J:2:NAG:H83	3:J:2:NAG:H3	1.95	0.47
1:A:563:CYS:O	1:A:619:TYR:OH	2.26	0.47
4:A:2004:NAG:HO3	4:A:2004:NAG:C7	2.18	0.47

Continued on next page...

Continued from previous page...

Atom-1	Atom-2	Interatomic distance (Å)	Clash overlap (Å)
1:C:974:GLU:O	1:C:978:VAL:HG23	2.15	0.47
1:D:1180:SER:OG	1:D:1233:ASN:O	2.15	0.47
1:C:138:TYR:CZ	1:C:144:VAL:HG23	2.49	0.47
1:C:742:ASP:OD1	1:C:742:ASP:N	2.47	0.47
1:D:1074:GLN:HA	1:D:1080:PHE:HB3	1.97	0.47
1:A:118:THR:HG22	1:A:678:PHE:HZ	1.80	0.47
1:A:742:ASP:OD1	1:A:742:ASP:N	2.47	0.47
4:B:2004:NAG:O7	4:B:2004:NAG:O3	2.32	0.47
1:C:351:SER:HG	1:C:352:PHE:H	1.61	0.47
1:C:804:ARG:NE	1:C:863:LYS:O	2.48	0.47
1:C:854:GLN:NE2	1:C:855:THR:O	2.48	0.47
3:H:1:NAG:H3	3:H:2:NAG:H82	1.96	0.47
1:A:138:TYR:CZ	1:A:144:VAL:HG23	2.49	0.47
1:A:272:TYR:HB3	1:A:316:TYR:HB2	1.97	0.47
1:A:926:GLU:OE2	1:A:928:SER:OG	2.32	0.47
1:A:1128:LEU:HD22	1:A:1150:LEU:HD13	1.97	0.47
1:A:1301:GLN:N	1:A:1301:GLN:OE1	2.47	0.47
1:B:765:TRP:HB2	1:B:785:SER:O	2.14	0.47
1:B:804:ARG:NH2	1:B:863:LYS:O	2.47	0.47
1:B:960:GLN:NE2	1:B:961:ASN:H	2.12	0.47
1:B:1220:GLN:HG2	1:B:1221:PRO:HD3	1.97	0.47
1:C:363:ILE:CD1	1:C:481:ILE:HD11	2.38	0.47
1:D:352:PHE:O	1:D:353:VAL:HG13	2.13	0.47
1:D:955:LEU:HB3	1:D:1298:LEU:HD22	1.97	0.47
3:L:1:NAG:H83	3:L:2:NAG:C8	2.45	0.47
1:B:665:ASP:OD1	1:B:667:TYR:N	2.45	0.47
1:C:955:LEU:HD23	1:C:958:ALA:CB	2.43	0.47
1:C:1301:GLN:OE1	1:C:1301:GLN:N	2.47	0.47
1:A:957:SER:O	1:A:957:SER:OG	2.33	0.47
1:B:917:ASN:OD1	1:B:917:ASN:N	2.48	0.47
1:C:235:VAL:HB	1:C:338:ARG:HE	1.80	0.47
1:D:747:ASN:OD1	1:D:749:ALA:N	2.48	0.47
1:A:952:GLY:HA3	1:A:1297:ARG:NH1	2.30	0.46
1:C:1128:LEU:HD22	1:C:1150:LEU:HD13	1.97	0.46
1:D:955:LEU:HD23	1:D:958:ALA:CB	2.43	0.46
1:A:773:SER:HG	1:A:776:ALA:H	1.64	0.46
1:C:775:ASP:OD1	1:C:776:ALA:N	2.49	0.46
1:A:189:GLN:OE1	1:A:189:GLN:N	2.45	0.46
1:A:578:LEU:HD21	1:A:790:GLN:OE1	2.15	0.46
1:A:965:LEU:HD23	1:A:967:GLN:HG3	1.98	0.46
1:B:965:LEU:HD23	1:B:967:GLN:HG3	1.98	0.46

Continued on next page...

Continued from previous page...

Atom-1	Atom-2	Interatomic distance (Å)	Clash overlap (Å)
1:A:356:ASP:OD2	1:A:460:HIS:NE2	2.40	0.46
1:A:974:GLU:O	1:A:978:VAL:HG23	2.15	0.46
1:C:56:GLU:O	1:C:58:VAL:N	2.49	0.46
1:C:578:LEU:HD21	1:C:790:GLN:OE1	2.15	0.46
1:D:351:SER:HG	1:D:352:PHE:N	2.11	0.46
1:D:1118:HIS:HB3	1:D:1121:VAL:HG12	1.97	0.46
1:C:828:LEU:HD22	1:C:858:TRP:CE2	2.51	0.46
1:C:926:GLU:OE2	1:C:928:SER:OG	2.32	0.46
1:D:138:TYR:CE2	1:D:144:VAL:HG23	2.51	0.46
1:D:189:GLN:OE1	1:D:189:GLN:N	2.49	0.46
1:D:917:ASN:N	1:D:917:ASN:OD1	2.48	0.46
1:A:235:VAL:HB	1:A:338:ARG:HE	1.80	0.46
1:B:239:ILE:O	1:B:342:GLU:C	2.54	0.46
1:B:957:SER:O	1:B:957:SER:OG	2.33	0.46
1:B:1074:GLN:HA	1:B:1080:PHE:HB3	1.97	0.46
1:A:804:ARG:NE	1:A:863:LYS:O	2.48	0.46
1:C:1098:GLU:OE1	1:C:1098:GLU:N	2.44	0.46
1:D:350:LEU:CD1	1:D:444:ALA:HB2	2.32	0.46
1:D:665:ASP:OD1	1:D:667:TYR:N	2.45	0.46
1:D:1220:GLN:HG2	1:D:1221:PRO:HD3	1.97	0.46
1:B:138:TYR:CE2	1:B:144:VAL:HG23	2.51	0.46
1:B:961:ASN:ND2	1:B:1247:GLY:HA2	2.18	0.46
1:C:685:LYS:O	1:C:687:LYS:N	2.48	0.46
1:B:187:LEU:HD11	1:B:743:LEU:HD21	1.98	0.46
1:B:569:ASP:OD1	1:B:570:LEU:N	2.48	0.46
1:C:165:VAL:HG13	1:C:207:VAL:HG12	1.98	0.46
1:C:505:ILE:HG22	1:C:506:VAL:N	2.31	0.46
1:D:599:ALA:HB3	1:D:740:ILE:HB	1.98	0.46
1:A:349:LYS:C	1:A:372:VAL:O	2.55	0.46
1:A:351:SER:HG	1:A:352:PHE:N	2.13	0.46
1:C:351:SER:OG	1:C:352:PHE:O	2.32	0.46
1:D:957:SER:O	1:D:957:SER:OG	2.33	0.46
1:A:602:GLN:HG2	1:A:605:LEU:HB3	1.98	0.45
1:B:189:GLN:OE1	1:B:189:GLN:N	2.48	0.45
1:B:599:ALA:HB3	1:B:740:ILE:HB	1.98	0.45
1:D:584:HIS:CE1	1:D:754:VAL:HG22	2.52	0.45
1:A:56:GLU:O	1:A:58:VAL:N	2.49	0.45
1:A:352:PHE:HD1	1:A:369:VAL:HG22	1.81	0.45
1:A:775:ASP:OD1	1:A:776:ALA:N	2.49	0.45
1:C:38:LEU:HD22	1:C:624:GLU:OE2	2.16	0.45
1:C:878:GLU:OE1	1:C:879:SER:N	2.49	0.45

Continued on next page...

Continued from previous page...

Atom-1	Atom-2	Interatomic distance (Å)	Clash overlap (Å)
1:C:979:LEU:O	1:C:983:ASN:ND2	2.47	0.45
1:D:765:TRP:HB2	1:D:786:LEU:HB2	1.98	0.45
1:A:167:ILE:HG22	1:A:175:ILE:HG22	1.98	0.45
1:A:505:ILE:HG22	1:A:506:VAL:N	2.31	0.45
1:C:167:ILE:HG22	1:C:175:ILE:HG22	1.98	0.45
1:C:272:TYR:HB3	1:C:316:TYR:HB2	1.97	0.45
1:A:284:GLN:NE2	1:A:287:CYS:SG	2.86	0.45
1:A:351:SER:OG	1:A:352:PHE:O	2.32	0.45
1:B:1118:HIS:HB3	1:B:1121:VAL:HG12	1.97	0.45
1:B:1146:THR:O	1:B:1150:LEU:HD23	2.17	0.45
1:C:957:SER:O	1:C:957:SER:OG	2.33	0.45
1:D:187:LEU:HD11	1:D:743:LEU:HD21	1.98	0.45
1:A:878:GLU:OE1	1:A:879:SER:N	2.50	0.45
1:A:1059:ASP:OD2	1:A:1062:HIS:ND1	2.50	0.45
1:C:965:LEU:HD23	1:C:967:GLN:HG3	1.98	0.45
1:D:270:ARG:NE	1:D:316:TYR:O	2.49	0.45
1:D:418:SER:C	1:D:419:LEU:HD12	2.37	0.45
1:D:928:SER:OG	1:D:929:GLU:N	2.49	0.45
1:A:38:LEU:HD22	1:A:624:GLU:OE2	2.16	0.45
1:B:955:LEU:HB3	1:B:1298:LEU:HD22	1.97	0.45
1:C:602:GLN:HG2	1:C:605:LEU:HB3	1.98	0.45
1:C:1059:ASP:OD2	1:C:1062:HIS:ND1	2.50	0.45
1:D:965:LEU:HD23	1:D:967:GLN:HG3	1.98	0.45
1:A:165:VAL:HG13	1:A:207:VAL:HG12	1.98	0.45
1:B:270:ARG:NE	1:B:316:TYR:O	2.49	0.45
1:B:418:SER:C	1:B:419:LEU:HD12	2.36	0.45
1:B:602:GLN:C	1:B:763:THR:HG1	2.17	0.45
1:B:1304:SER:C	1:B:1305:LEU:HD12	2.37	0.45
1:D:56:GLU:O	1:D:58:VAL:N	2.50	0.45
1:B:928:SER:OG	1:B:929:GLU:N	2.49	0.45
1:B:1043:ALA:HB2	1:B:1105:ILE:HG12	1.99	0.45
1:C:118:THR:HG22	1:C:678:PHE:HZ	1.80	0.45
1:D:239:ILE:O	1:D:342:GLU:C	2.54	0.45
1:D:579:PRO:O	1:D:581:SER:N	2.48	0.45
1:D:1166:VAL:O	1:D:1169:SER:OG	2.31	0.45
1:D:1304:SER:C	1:D:1305:LEU:HD12	2.37	0.45
1:B:415:MET:HA	1:B:450:LEU:HD21	1.98	0.45
1:B:747:ASN:OD1	1:B:749:ALA:N	2.48	0.45
1:B:765:TRP:HB2	1:B:786:LEU:HB2	1.98	0.45
1:B:961:ASN:CG	1:B:1247:GLY:H	2.20	0.45
1:A:828:LEU:HD22	1:A:858:TRP:CE2	2.51	0.44

Continued on next page...

Continued from previous page...

Atom-1	Atom-2	Interatomic distance (Å)	Clash overlap (Å)
1:C:352:PHE:HD1	1:C:369:VAL:HG22	1.81	0.44
1:C:584:HIS:CE1	1:C:754:VAL:HG22	2.52	0.44
1:D:1146:THR:O	1:D:1150:LEU:HD23	2.17	0.44
3:H:2:NAG:C1	3:H:2:NAG:C8	2.94	0.44
1:A:352:PHE:HA	1:A:369:VAL:HG13	1.99	0.44
1:B:584:HIS:CE1	1:B:754:VAL:HG22	2.52	0.44
1:B:350:LEU:CD1	1:B:444:ALA:HB2	2.32	0.44
1:C:954:ILE:HD12	1:C:954:ILE:C	2.38	0.44
1:C:1193:VAL:HG22	1:C:1194:GLY:H	1.83	0.44
3:L:1:NAG:H3	3:L:2:NAG:H82	1.98	0.44
1:B:867:ASN:OD1	1:B:904:LEU:HD13	2.17	0.44
1:D:1178:ASP:OD1	1:D:1178:ASP:N	2.51	0.44
1:B:954:ILE:HD12	1:B:954:ILE:C	2.38	0.44
1:C:352:PHE:CD1	1:C:369:VAL:HG22	2.53	0.44
1:D:951:LEU:HB2	1:D:952:GLY:H	1.62	0.44
1:D:953:ASP:OD1	1:D:1236:LYS:CE	2.64	0.44
3:H:2:NAG:H3	3:H:2:NAG:C8	2.19	0.44
1:A:584:HIS:CE1	1:A:754:VAL:HG22	2.52	0.44
1:A:1193:VAL:HG22	1:A:1194:GLY:H	1.83	0.44
1:D:351:SER:HG	1:D:370:ARG:HG2	1.82	0.44
1:D:685:LYS:O	1:D:687:LYS:N	2.50	0.44
3:F:1:NAG:H82	3:F:1:NAG:H2	1.87	0.44
1:A:1259:HIS:O	1:A:1262:SER:OG	2.28	0.44
1:C:351:SER:CA	1:C:370:ARG:O	2.66	0.44
1:C:601:ASP:HB3	1:C:738:THR:H	1.82	0.44
1:C:767:ALA:O	1:C:782:SER:O	2.36	0.44
1:C:1189:PRO:CG	1:C:1193:VAL:HG11	2.48	0.44
1:D:643:ILE:HG22	1:D:643:ILE:O	2.18	0.44
1:A:51:LEU:HG	1:A:79:ALA:HB1	2.00	0.44
1:A:155:PHE:HB3	1:A:778:LEU:HD22	1.99	0.44
1:A:685:LYS:O	1:A:687:LYS:N	2.48	0.44
1:A:1189:PRO:CG	1:A:1193:VAL:HG11	2.48	0.44
1:B:244:GLU:N	1:B:244:GLU:OE2	2.51	0.44
1:B:249:SER:HG	1:B:301:TYR:HD2	1.66	0.44
1:C:350:LEU:CD1	1:C:444:ALA:HB2	2.38	0.44
1:C:738:THR:HG22	1:C:739:TRP:N	2.33	0.44
1:D:415:MET:HA	1:D:450:LEU:HD21	1.98	0.44
1:D:576:GLN:NE2	1:D:757:THR:OG1	2.44	0.44
1:A:954:ILE:HD12	1:A:954:ILE:C	2.38	0.44
1:D:244:GLU:N	1:D:244:GLU:OE2	2.51	0.44
1:D:351:SER:O	1:D:369:VAL:HG13	2.18	0.44

Continued on next page...

Continued from previous page...

Atom-1	Atom-2	Interatomic distance (Å)	Clash overlap (Å)
1:C:51:LEU:HG	1:C:79:ALA:HB1	2.00	0.43
1:C:829:GLU:O	1:C:871:THR:OG1	2.30	0.43
1:C:955:LEU:HA	1:C:958:ALA:CB	2.48	0.43
1:D:521:LYS:HA	1:D:521:LYS:HE2	2.00	0.43
1:D:955:LEU:HA	1:D:958:ALA:CB	2.48	0.43
1:A:458:PHE:HE2	1:A:481:ILE:HD12	1.79	0.43
1:A:606:LEU:HD23	1:A:606:LEU:O	2.17	0.43
1:B:118:THR:HG22	1:B:678:PHE:CZ	2.53	0.43
1:B:349:LYS:C	1:B:372:VAL:O	2.57	0.43
1:D:974:GLU:O	1:D:978:VAL:HG23	2.18	0.43
1:D:1043:ALA:HB2	1:D:1105:ILE:HG12	2.00	0.43
1:A:29:PRO:HA	1:A:53:TYR:HB2	2.01	0.43
1:A:352:PHE:CD1	1:A:369:VAL:HG22	2.53	0.43
1:A:738:THR:HG22	1:A:739:TRP:N	2.33	0.43
1:A:767:ALA:O	1:A:782:SER:O	2.36	0.43
1:A:1129:GLU:OE1	1:A:1162:LYS:NZ	2.47	0.43
1:A:1181:VAL:HG23	1:A:1234:ILE:CG2	2.48	0.43
1:B:272:TYR:HB3	1:B:316:TYR:HB2	2.00	0.43
1:B:351:SER:O	1:B:369:VAL:HG13	2.18	0.43
1:B:974:GLU:O	1:B:978:VAL:HG23	2.18	0.43
1:C:352:PHE:HA	1:C:369:VAL:HG13	1.99	0.43
1:A:350:LEU:CD1	1:A:444:ALA:HB2	2.38	0.43
1:A:363:ILE:CD1	1:A:481:ILE:HD11	2.38	0.43
1:A:535:ALA:HB1	1:A:536:PRO:HD2	2.01	0.43
1:A:955:LEU:HA	1:A:958:ALA:CB	2.48	0.43
1:A:1026:SER:OG	1:A:1027:THR:N	2.52	0.43
1:B:78:GLU:OE2	1:B:78:GLU:N	2.52	0.43
1:C:1181:VAL:HG23	1:C:1234:ILE:CG2	2.48	0.43
1:B:685:LYS:O	1:B:687:LYS:N	2.50	0.43
1:B:1166:VAL:O	1:B:1169:SER:OG	2.31	0.43
1:C:1176:LYS:HA	1:C:1181:VAL:HA	2.01	0.43
1:C:1213:LEU:O	1:C:1217:LEU:HD23	2.19	0.43
3:H:1:NAG:C8	3:H:1:NAG:C3	2.96	0.43
1:A:308:VAL:HA	1:A:310:GLN:HE22	1.84	0.43
1:A:351:SER:CA	1:A:370:ARG:O	2.66	0.43
1:B:56:GLU:O	1:B:58:VAL:N	2.50	0.43
1:B:952:GLY:O	1:B:1297:ARG:NH2	2.51	0.43
1:C:349:LYS:C	1:C:372:VAL:O	2.55	0.43
1:B:955:LEU:HA	1:B:958:ALA:CB	2.48	0.43
1:C:38:LEU:HD13	1:C:624:GLU:OE1	2.19	0.43
1:C:155:PHE:HB3	1:C:778:LEU:HD22	1.99	0.43

Continued on next page...

Continued from previous page...

Atom-1	Atom-2	Interatomic distance (Å)	Clash overlap (Å)
1:D:569:ASP:OD1	1:D:570:LEU:N	2.48	0.43
1:A:351:SER:HG	1:A:352:PHE:H	1.60	0.43
1:A:360:ARG:NH2	1:A:459:VAL:O	2.52	0.43
1:A:601:ASP:HB3	1:A:738:THR:H	1.82	0.43
1:A:1176:LYS:HA	1:A:1181:VAL:HA	2.01	0.43
1:B:1178:ASP:OD1	1:B:1178:ASP:N	2.51	0.43
1:C:134:ASP:OD1	1:C:738:THR:HG23	2.19	0.43
1:C:535:ALA:HB1	1:C:536:PRO:HD2	2.01	0.43
1:C:585:LEU:HD22	1:C:597:LEU:HD23	2.01	0.43
1:C:606:LEU:HD23	1:C:606:LEU:O	2.17	0.43
1:C:958:ALA:HA	1:C:989:TYR:CZ	2.52	0.43
1:D:118:THR:HG22	1:D:678:PHE:CZ	2.53	0.43
1:A:66:SER:HB3	1:A:71:ARG:HB2	2.01	0.43
1:B:521:LYS:HA	1:B:521:LYS:HE2	2.00	0.43
1:C:29:PRO:HA	1:C:53:TYR:HB2	2.01	0.43
1:A:38:LEU:HD13	1:A:624:GLU:OE1	2.19	0.42
1:A:143:THR:HA	1:A:193:PRO:HA	2.01	0.42
1:B:351:SER:HG	1:B:370:ARG:HG2	1.84	0.42
1:B:643:ILE:HG22	1:B:643:ILE:O	2.18	0.42
1:C:351:SER:HG	1:C:352:PHE:N	2.15	0.42
1:D:165:VAL:HG22	1:D:207:VAL:HG22	2.01	0.42
1:A:134:ASP:OD1	1:A:738:THR:HG23	2.19	0.42
1:D:152:ASP:OD1	1:D:152:ASP:N	2.51	0.42
1:D:288:GLU:OE1	1:D:288:GLU:N	2.52	0.42
1:D:634:LEU:HD23	1:D:634:LEU:H	1.84	0.42
1:B:360:ARG:O	1:B:411:THR:OG1	2.38	0.42
1:B:951:LEU:HB2	1:B:952:GLY:H	1.62	0.42
1:D:1125:LEU:HD23	1:D:1128:LEU:HD12	2.01	0.42
1:A:585:LEU:HD22	1:A:597:LEU:HD23	2.01	0.42
1:A:912:LYS:HD2	1:A:1332:ILE:HD11	2.01	0.42
1:B:165:VAL:HG22	1:B:207:VAL:HG22	2.01	0.42
1:C:360:ARG:NH2	1:C:459:VAL:O	2.52	0.42
1:D:468:LEU:HD22	1:D:558:TYR:HB3	2.01	0.42
2:G:2:NAG:HO3	2:G:2:NAG:C7	2.15	0.42
1:A:267:SER:O	1:A:267:SER:OG	2.38	0.42
1:B:1088:ASN:OD1	1:B:1088:ASN:N	2.53	0.42
1:C:66:SER:HB3	1:C:71:ARG:HB2	2.01	0.42
1:C:773:SER:HG	1:C:776:ALA:H	1.67	0.42
1:D:249:SER:HG	1:D:301:TYR:HD2	1.65	0.42
1:D:584:HIS:NE2	1:D:754:VAL:HG22	2.34	0.42
1:B:1077:ASN:OD1	1:B:1078:GLY:N	2.53	0.42

Continued on next page...

Continued from previous page...

Atom-1	Atom-2	Interatomic distance (Å)	Clash overlap (Å)
1:C:342:GLU:O	1:C:344:THR:N	2.53	0.42
1:C:579:PRO:O	1:C:581:SER:N	2.53	0.42
1:C:758:VAL:HG23	1:C:759:PRO:HD2	2.02	0.42
1:D:78:GLU:OE2	1:D:78:GLU:N	2.52	0.42
1:D:349:LYS:C	1:D:372:VAL:O	2.57	0.42
1:D:602:GLN:C	1:D:763:THR:HG1	2.19	0.42
1:A:67:VAL:CG2	1:C:1067:LEU:HD21	2.50	0.42
1:A:758:VAL:HG23	1:A:759:PRO:HD2	2.02	0.42
1:A:1213:LEU:O	1:A:1217:LEU:HD23	2.19	0.42
1:B:310:GLN:O	1:B:312:LYS:N	2.53	0.42
1:B:468:LEU:HD22	1:B:558:TYR:HB3	2.01	0.42
1:B:584:HIS:NE2	1:B:754:VAL:HG22	2.34	0.42
1:B:877:LEU:O	1:B:889:SER:OG	2.13	0.42
1:C:33:VAL:HG12	1:C:49:VAL:HG23	2.02	0.42
1:C:951:LEU:HB2	1:C:952:GLY:H	1.62	0.42
1:C:966:LEU:HD21	1:C:1004:ALA:CB	2.47	0.42
1:D:272:TYR:HB3	1:D:316:TYR:HB2	2.01	0.42
1:D:360:ARG:O	1:D:411:THR:OG1	2.38	0.42
1:A:33:VAL:HG12	1:A:49:VAL:HG23	2.02	0.42
1:A:169:ASP:H	1:A:174:ARG:CA	2.33	0.42
1:B:600:VAL:HG23	1:B:738:THR:HA	2.02	0.42
1:C:583:ALA:HB2	1:C:757:THR:OG1	2.20	0.42
1:D:1226:GLU:OE1	1:D:1226:GLU:N	2.49	0.42
1:B:288:GLU:N	1:B:288:GLU:OE1	2.52	0.42
1:B:352:PHE:HA	1:B:369:VAL:HG13	2.02	0.42
1:B:602:GLN:HG2	1:B:605:LEU:HB3	2.02	0.42
1:C:308:VAL:HA	1:C:310:GLN:HE22	1.84	0.42
1:C:489:GLY:O	1:C:490:LEU:HD12	2.20	0.42
1:C:665:ASP:OD1	1:C:666:MET:N	2.53	0.42
1:C:912:LYS:HD2	1:C:1332:ILE:HD11	2.01	0.42
1:A:372:VAL:HG12	1:A:373:ASP:N	2.35	0.42
1:A:489:GLY:C	1:A:490:LEU:HD12	2.40	0.42
1:A:887:VAL:O	1:A:887:VAL:HG13	2.20	0.42
1:C:881:GLU:HG3	1:C:887:VAL:HG12	2.02	0.42
1:C:1129:GLU:OE1	1:C:1162:LYS:NZ	2.47	0.42
1:C:1259:HIS:O	1:C:1262:SER:OG	2.28	0.42
1:D:310:GLN:O	1:D:312:LYS:N	2.53	0.42
1:D:775:ASP:OD1	1:D:776:ALA:N	2.52	0.42
1:A:118:THR:HG21	1:A:676:LYS:HD2	2.02	0.41
1:A:665:ASP:OD1	1:A:666:MET:N	2.53	0.41
1:B:26:SER:OG	1:B:27:GLY:N	2.53	0.41

Continued on next page...

Continued from previous page...

Atom-1	Atom-2	Interatomic distance (Å)	Clash overlap (Å)
1:A:1051:GLN:O	1:A:1054:ALA:HB3	2.20	0.41
1:A:1189:PRO:HG2	1:A:1193:VAL:HG11	2.02	0.41
1:B:634:LEU:HD23	1:B:634:LEU:H	1.84	0.41
1:B:951:LEU:CD1	1:B:953:ASP:HB3	2.51	0.41
1:C:648:VAL:HG21	1:C:657:PRO:C	2.41	0.41
1:D:602:GLN:HG2	1:D:605:LEU:HB3	2.02	0.41
1:A:342:GLU:O	1:A:344:THR:N	2.53	0.41
1:A:459:VAL:HG23	1:A:552:ILE:HD12	2.03	0.41
1:A:951:LEU:CD1	1:A:953:ASP:HB3	2.51	0.41
1:A:1067:LEU:HD21	1:C:67:VAL:CG2	2.50	0.41
1:C:169:ASP:H	1:C:174:ARG:CA	2.33	0.41
1:C:415:MET:HA	1:C:450:LEU:HD21	2.02	0.41
1:C:1051:GLN:O	1:C:1054:ALA:HB3	2.20	0.41
1:C:459:VAL:HG23	1:C:552:ILE:HD12	2.03	0.41
1:A:381:ASN:CA	1:A:399:THR:O	2.69	0.41
1:A:765:TRP:O	1:A:784:ALA:O	2.38	0.41
1:A:962:THR:OG1	1:A:963:GLN:N	2.54	0.41
1:B:887:VAL:O	1:B:887:VAL:HG13	2.21	0.41
1:B:1125:LEU:HD23	1:B:1128:LEU:HD12	2.01	0.41
1:C:118:THR:HG21	1:C:676:LYS:HD2	2.02	0.41
1:C:381:ASN:CA	1:C:399:THR:O	2.69	0.41
1:A:415:MET:HA	1:A:450:LEU:HD21	2.02	0.41
1:A:579:PRO:O	1:A:581:SER:N	2.53	0.41
1:B:183:LEU:HD22	1:B:187:LEU:C	2.41	0.41
1:B:653:ILE:HD12	1:C:643:ILE:HD13	2.03	0.41
1:B:935:LEU:HD13	1:B:1330:TYR:HE1	1.84	0.41
1:B:962:THR:OG1	1:B:963:GLN:N	2.54	0.41
1:C:372:VAL:HG12	1:C:373:ASP:N	2.35	0.41
1:C:887:VAL:O	1:C:887:VAL:HG13	2.20	0.41
1:C:1026:SER:OG	1:C:1027:THR:N	2.52	0.41
1:D:53:TYR:O	1:D:54:LEU:HB2	2.21	0.41
1:D:273:SER:HB3	1:D:285:ALA:HB2	2.01	0.41
1:D:974:GLU:HG3	1:D:1027:THR:HG23	2.03	0.41
1:C:143:THR:HA	1:C:193:PRO:HA	2.01	0.41
1:C:267:SER:O	1:C:267:SER:OG	2.38	0.41
1:C:489:GLY:C	1:C:490:LEU:HD12	2.40	0.41
1:D:600:VAL:HG23	1:D:738:THR:HA	2.02	0.41
1:D:951:LEU:CD1	1:D:953:ASP:HB3	2.51	0.41
3:F:2:NAG:C8	3:F:2:NAG:C3	2.89	0.41
1:A:165:VAL:HG22	1:A:207:VAL:HG12	2.03	0.41
1:A:350:LEU:HD12	1:A:351:SER:N	2.36	0.41

Continued on next page...

Continued from previous page...

Atom-1	Atom-2	Interatomic distance (Å)	Clash overlap (Å)
1:A:489:GLY:O	1:A:490:LEU:HD12	2.20	0.41
1:A:739:TRP:O	1:A:740:ILE:HD13	2.21	0.41
1:B:42:GLU:N	1:B:91:VAL:O	2.54	0.41
1:B:505:ILE:HG22	1:B:506:VAL:H	1.85	0.41
1:C:468:LEU:HD11	1:C:530:VAL:HG21	2.03	0.41
1:C:952:GLY:O	1:C:1297:ARG:CZ	2.61	0.41
1:D:352:PHE:HA	1:D:369:VAL:HG13	2.02	0.41
1:A:482:LEU:O	1:A:520:MET:HA	2.20	0.41
1:A:643:ILE:HD13	1:D:653:ILE:HD12	2.02	0.41
1:B:53:TYR:O	1:B:54:LEU:HB2	2.21	0.41
1:B:350:LEU:HD12	1:B:351:SER:N	2.36	0.41
1:B:493:LEU:HD11	1:B:546:LEU:HA	2.03	0.41
1:B:775:ASP:OD1	1:B:776:ALA:N	2.52	0.41
1:D:183:LEU:HD22	1:D:187:LEU:C	2.41	0.41
1:D:493:LEU:HD11	1:D:546:LEU:HA	2.03	0.41
1:D:505:ILE:HG22	1:D:506:VAL:H	1.85	0.41
1:D:887:VAL:HG13	1:D:887:VAL:O	2.21	0.41
1:D:962:THR:OG1	1:D:963:GLN:N	2.54	0.41
1:A:95:SER:OG	1:A:96:SER:N	2.54	0.41
1:A:731:VAL:HG21	1:A:760:ASP:OD2	2.21	0.41
1:C:482:LEU:O	1:C:520:MET:HA	2.20	0.41
1:C:765:TRP:O	1:C:784:ALA:O	2.38	0.41
1:C:951:LEU:CD1	1:C:953:ASP:HB3	2.51	0.41
1:D:785:SER:OG	1:D:786:LEU:N	2.54	0.41
1:D:1076:ASP:OD1	1:D:1076:ASP:N	2.54	0.41
1:D:1077:ASN:OD1	1:D:1078:GLY:N	2.53	0.41
1:B:372:VAL:HG12	1:B:373:ASP:N	2.36	0.40
1:B:974:GLU:HG3	1:B:1027:THR:HG23	2.03	0.40
1:C:737:GLU:O	1:C:738:THR:OG1	2.33	0.40
1:C:1189:PRO:HG2	1:C:1193:VAL:HG11	2.02	0.40
1:A:239:ILE:HG22	1:A:341:SER:HB3	2.04	0.40
1:A:881:GLU:HG3	1:A:887:VAL:HG12	2.02	0.40
1:A:954:ILE:O	1:A:954:ILE:CG1	2.70	0.40
1:B:273:SER:HB3	1:B:285:ALA:HB2	2.01	0.40
1:C:203:TYR:CE2	1:C:221:VAL:HG21	2.56	0.40
1:C:350:LEU:HD12	1:C:351:SER:N	2.36	0.40
1:C:962:THR:OG1	1:C:963:GLN:N	2.54	0.40
1:D:143:THR:HA	1:D:193:PRO:HA	2.03	0.40
1:D:1144:VAL:HG23	1:D:1145:TYR:H	1.86	0.40
1:A:203:TYR:CE2	1:A:221:VAL:HG21	2.56	0.40
1:C:95:SER:OG	1:C:96:SER:N	2.54	0.40

Continued on next page...

Continued from previous page...

Atom-1	Atom-2	Interatomic distance (Å)	Clash overlap (Å)
1:C:371:LEU:HD22	1:C:399:THR:HG21	2.03	0.40
1:A:371:LEU:HD22	1:A:399:THR:HG21	2.03	0.40
1:C:822:ILE:HG22	1:C:823:ARG:O	2.21	0.40
1:C:954:ILE:O	1:C:954:ILE:CG1	2.70	0.40
1:D:1088:ASN:N	1:D:1088:ASN:OD1	2.53	0.40
1:A:951:LEU:HB2	1:A:952:GLY:H	1.62	0.40
1:C:165:VAL:HG22	1:C:207:VAL:HG12	2.03	0.40
1:C:731:VAL:HG21	1:C:760:ASP:OD2	2.21	0.40

There are no symmetry-related clashes.

5.3 Torsion angles [i](#)

5.3.1 Protein backbone [i](#)

In the following table, the Percentiles column shows the percent Ramachandran outliers of the chain as a percentile score with respect to all PDB entries followed by that with respect to all EM entries.

The Analysed column shows the number of residues for which the backbone conformation was analysed, and the total number of residues.

Mol	Chain	Analysed	Favoured	Allowed	Outliers	Percentiles	
1	A	1281/1474 (87%)	1069 (84%)	189 (15%)	23 (2%)	8	43
1	B	1274/1474 (86%)	1076 (84%)	184 (14%)	14 (1%)	14	53
1	C	1281/1474 (87%)	1072 (84%)	186 (14%)	23 (2%)	8	43
1	D	1274/1474 (86%)	1078 (85%)	182 (14%)	14 (1%)	14	53
All	All	5110/5896 (87%)	4295 (84%)	741 (14%)	74 (1%)	15	48

All (74) Ramachandran outliers are listed below:

Mol	Chain	Res	Type
1	A	350	LEU
1	A	579	PRO
1	A	786	LEU
1	A	966	LEU
1	A	1196	PHE
1	A	1204	ALA
1	B	350	LEU

Continued on next page...

Continued from previous page...

Mol	Chain	Res	Type
1	B	786	LEU
1	B	966	LEU
1	C	350	LEU
1	C	579	PRO
1	C	786	LEU
1	C	966	LEU
1	C	1196	PHE
1	C	1204	ALA
1	D	350	LEU
1	D	786	LEU
1	D	966	LEU
1	A	55	ASN
1	A	174	ARG
1	A	353	VAL
1	A	506	VAL
1	A	580	ALA
1	B	175	ILE
1	B	506	VAL
1	B	785	SER
1	C	55	ASN
1	C	174	ARG
1	C	353	VAL
1	C	506	VAL
1	C	580	ALA
1	D	175	ILE
1	D	506	VAL
1	D	785	SER
1	A	578	LEU
1	A	782	SER
1	C	578	LEU
1	C	782	SER
1	A	54	LEU
1	A	581	SER
1	B	353	VAL
1	B	782	SER
1	B	784	ALA
1	C	54	LEU
1	C	581	SER
1	D	353	VAL
1	D	782	SER
1	D	784	ALA
1	A	465	SER

Continued on next page...

Continued from previous page...

Mol	Chain	Res	Type
1	A	574	PRO
1	A	936	PRO
1	A	1030	GLU
1	B	272	TYR
1	B	317	GLU
1	B	574	PRO
1	C	465	SER
1	C	574	PRO
1	C	936	PRO
1	C	1030	GLU
1	D	272	TYR
1	D	317	GLU
1	D	574	PRO
1	A	648	VAL
1	A	952	GLY
1	B	952	GLY
1	C	648	VAL
1	C	952	GLY
1	D	952	GLY
1	A	489	GLY
1	A	1221	PRO
1	B	1221	PRO
1	C	489	GLY
1	C	1221	PRO
1	D	1221	PRO

5.3.2 Protein sidechains [i](#)

In the following table, the Percentiles column shows the percent sidechain outliers of the chain as a percentile score with respect to all PDB entries followed by that with respect to all EM entries.

The Analysed column shows the number of residues for which the sidechain conformation was analysed, and the total number of residues.

Mol	Chain	Analysed	Rotameric	Outliers	Percentiles	
1	A	1120/1290 (87%)	1109 (99%)	11 (1%)	76	88
1	B	1115/1290 (86%)	1105 (99%)	10 (1%)	78	90
1	C	1120/1290 (87%)	1109 (99%)	11 (1%)	76	88
1	D	1115/1290 (86%)	1105 (99%)	10 (1%)	78	90
All	All	4470/5160 (87%)	4428 (99%)	42 (1%)	79	90

All (42) residues with a non-rotameric sidechain are listed below:

Mol	Chain	Res	Type
1	A	76	ASP
1	A	273	SER
1	A	338	ARG
1	A	410	ASN
1	A	563	CYS
1	A	664	LYS
1	A	951	LEU
1	A	954	ILE
1	A	960	GLN
1	A	963	GLN
1	A	965	LEU
1	B	396	ASN
1	B	492	LYS
1	B	664	LYS
1	B	666	MET
1	B	823	ARG
1	B	951	LEU
1	B	954	ILE
1	B	960	GLN
1	B	963	GLN
1	B	965	LEU
1	C	76	ASP
1	C	273	SER
1	C	338	ARG
1	C	410	ASN
1	C	563	CYS
1	C	664	LYS
1	C	951	LEU
1	C	954	ILE
1	C	960	GLN
1	C	963	GLN
1	C	965	LEU
1	D	396	ASN
1	D	492	LYS
1	D	664	LYS
1	D	666	MET
1	D	823	ARG
1	D	951	LEU
1	D	954	ILE
1	D	960	GLN
1	D	963	GLN
1	D	965	LEU

Sometimes sidechains can be flipped to improve hydrogen bonding and reduce clashes. All (35) such sidechains are listed below:

Mol	Chain	Res	Type
1	A	310	GLN
1	A	854	GLN
1	A	960	GLN
1	A	963	GLN
1	A	967	GLN
1	A	1013	GLN
1	B	124	ASN
1	B	413	ASN
1	B	474	GLN
1	B	562	ASN
1	B	960	GLN
1	B	963	GLN
1	B	964	ASN
1	B	967	GLN
1	B	1013	GLN
1	B	1038	ASN
1	B	1089	ASN
1	C	310	GLN
1	C	854	GLN
1	C	960	GLN
1	C	961	ASN
1	C	963	GLN
1	C	967	GLN
1	C	1013	GLN
1	D	124	ASN
1	D	361	GLN
1	D	413	ASN
1	D	474	GLN
1	D	562	ASN
1	D	960	GLN
1	D	963	GLN
1	D	967	GLN
1	D	1013	GLN
1	D	1038	ASN
1	D	1089	ASN

5.3.3 RNA [i](#)

There are no RNA molecules in this entry.

5.4 Non-standard residues in protein, DNA, RNA chains [i](#)

There are no non-standard protein/DNA/RNA residues in this entry.

5.5 Carbohydrates [i](#)

20 monosaccharides are modelled in this entry.

In the following table, the Counts columns list the number of bonds (or angles) for which Mogul statistics could be retrieved, the number of bonds (or angles) that are observed in the model and the number of bonds (or angles) that are defined in the Chemical Component Dictionary. The Link column lists molecule types, if any, to which the group is linked. The Z score for a bond length (or angle) is the number of standard deviations the observed value is removed from the expected value. A bond length (or angle) with $|Z| > 2$ is considered an outlier worth inspection. RMSZ is the root-mean-square of all Z scores of the bond lengths (or angles).

Mol	Type	Chain	Res	Link	Bond lengths			Bond angles		
					Counts	RMSZ	# Z > 2	Counts	RMSZ	# Z > 2
2	NAG	E	1	1,2	14,14,15	0.32	0	17,19,21	0.81	0
2	NAG	E	2	2	14,14,15	0.30	0	17,19,21	0.69	0
3	NAG	F	1	1,3	14,14,15	0.33	0	17,19,21	0.68	0
3	NAG	F	2	3	14,14,15	0.35	0	17,19,21	0.71	0
3	BMA	F	3	3	11,11,12	0.21	0	15,15,17	0.73	0
2	NAG	G	1	1,2	14,14,15	0.30	0	17,19,21	0.81	0
2	NAG	G	2	2	14,14,15	0.25	0	17,19,21	0.57	0
3	NAG	H	1	1,3	14,14,15	0.35	0	17,19,21	1.38	2 (11%)
3	NAG	H	2	3	14,14,15	0.43	0	17,19,21	1.24	2 (11%)
3	BMA	H	3	3	11,11,12	0.22	0	15,15,17	0.53	0
2	NAG	I	1	1,2	14,14,15	0.26	0	17,19,21	0.38	0
2	NAG	I	2	2	14,14,15	0.37	0	17,19,21	0.37	0
3	NAG	J	1	1,3	14,14,15	0.47	0	17,19,21	0.78	1 (5%)
3	NAG	J	2	3	14,14,15	0.29	0	17,19,21	1.36	2 (11%)
3	BMA	J	3	3	11,11,12	0.64	0	15,15,17	0.77	0
2	NAG	K	1	1,2	14,14,15	0.29	0	17,19,21	0.78	0
2	NAG	K	2	2	14,14,15	0.26	0	17,19,21	0.55	0
3	NAG	L	1	1,3	14,14,15	0.35	0	17,19,21	1.39	2 (11%)
3	NAG	L	2	3	14,14,15	0.44	0	17,19,21	1.30	2 (11%)
3	BMA	L	3	3	11,11,12	0.22	0	15,15,17	0.54	0

In the following table, the Chirals column lists the number of chiral outliers, the number of chiral centers analysed, the number of these observed in the model and the number defined in the Chemical Component Dictionary. Similar counts are reported in the Torsion and Rings columns. '-' means no outliers of that kind were identified.

Mol	Type	Chain	Res	Link	Chirals	Torsions	Rings
2	NAG	E	1	1,2	-	2/6/23/26	0/1/1/1
2	NAG	E	2	2	-	3/6/23/26	0/1/1/1
3	NAG	F	1	1,3	-	2/6/23/26	0/1/1/1
3	NAG	F	2	3	-	3/6/23/26	0/1/1/1
3	BMA	F	3	3	-	0/2/19/22	0/1/1/1
2	NAG	G	1	1,2	-	0/6/23/26	0/1/1/1
2	NAG	G	2	2	-	3/6/23/26	0/1/1/1
3	NAG	H	1	1,3	-	5/6/23/26	0/1/1/1
3	NAG	H	2	3	-	4/6/23/26	0/1/1/1
3	BMA	H	3	3	-	0/2/19/22	0/1/1/1
2	NAG	I	1	1,2	-	2/6/23/26	0/1/1/1
2	NAG	I	2	2	-	2/6/23/26	0/1/1/1
3	NAG	J	1	1,3	-	4/6/23/26	0/1/1/1
3	NAG	J	2	3	-	3/6/23/26	0/1/1/1
3	BMA	J	3	3	-	0/2/19/22	0/1/1/1
2	NAG	K	1	1,2	-	0/6/23/26	0/1/1/1
2	NAG	K	2	2	-	5/6/23/26	0/1/1/1
3	NAG	L	1	1,3	-	5/6/23/26	0/1/1/1
3	NAG	L	2	3	-	4/6/23/26	0/1/1/1
3	BMA	L	3	3	-	0/2/19/22	0/1/1/1

There are no bond length outliers.

All (11) bond angle outliers are listed below:

Mol	Chain	Res	Type	Atoms	Z	Observed(°)	Ideal(°)
3	J	2	NAG	C2-N2-C7	4.43	129.21	122.90
3	L	2	NAG	C1-O5-C5	3.86	117.43	112.19
3	H	1	NAG	C1-O5-C5	3.84	117.39	112.19
3	L	1	NAG	C1-O5-C5	3.76	117.29	112.19
3	H	2	NAG	C1-O5-C5	3.67	117.17	112.19
3	L	1	NAG	O5-C1-C2	3.29	116.48	111.29
3	H	1	NAG	O5-C1-C2	3.03	116.06	111.29
3	J	1	NAG	C2-N2-C7	2.65	126.68	122.90
3	L	2	NAG	C3-C4-C5	-2.32	106.10	110.24
3	J	2	NAG	C1-C2-N2	2.11	114.09	110.49
3	H	2	NAG	C3-C4-C5	-2.08	106.52	110.24

There are no chirality outliers.

All (47) torsion outliers are listed below:

Mol	Chain	Res	Type	Atoms
2	E	2	NAG	C3-C2-N2-C7
2	G	2	NAG	C1-C2-N2-C7
3	F	2	NAG	C8-C7-N2-C2
3	H	1	NAG	C8-C7-N2-C2
3	H	1	NAG	O7-C7-N2-C2
3	H	2	NAG	C8-C7-N2-C2
3	H	2	NAG	O7-C7-N2-C2
3	L	1	NAG	C8-C7-N2-C2
3	L	1	NAG	O7-C7-N2-C2
3	F	2	NAG	O7-C7-N2-C2
2	K	2	NAG	C1-C2-N2-C7
3	H	1	NAG	O5-C5-C6-O6
3	L	1	NAG	O5-C5-C6-O6
3	L	1	NAG	C4-C5-C6-O6
3	L	2	NAG	C8-C7-N2-C2
3	L	2	NAG	O7-C7-N2-C2
3	F	1	NAG	C8-C7-N2-C2
3	F	1	NAG	O7-C7-N2-C2
3	J	1	NAG	C8-C7-N2-C2
3	J	1	NAG	O7-C7-N2-C2
3	J	2	NAG	C8-C7-N2-C2
3	J	2	NAG	O7-C7-N2-C2
3	H	1	NAG	C4-C5-C6-O6
3	J	1	NAG	C4-C5-C6-O6
3	L	1	NAG	C1-C2-N2-C7
3	H	1	NAG	C1-C2-N2-C7
2	E	2	NAG	C8-C7-N2-C2
3	J	1	NAG	O5-C5-C6-O6
2	I	2	NAG	C1-C2-N2-C7
2	K	2	NAG	C8-C7-N2-C2
2	E	2	NAG	O7-C7-N2-C2
3	H	2	NAG	O5-C5-C6-O6
2	G	2	NAG	O5-C5-C6-O6
2	K	2	NAG	O5-C5-C6-O6
3	L	2	NAG	O5-C5-C6-O6
3	H	2	NAG	C3-C2-N2-C7
2	K	2	NAG	O7-C7-N2-C2
2	G	2	NAG	C3-C2-N2-C7
2	I	1	NAG	C3-C2-N2-C7
2	I	2	NAG	C3-C2-N2-C7
2	K	2	NAG	C3-C2-N2-C7
3	F	2	NAG	C3-C2-N2-C7
3	J	2	NAG	C3-C2-N2-C7

Continued on next page...

Continued from previous page...

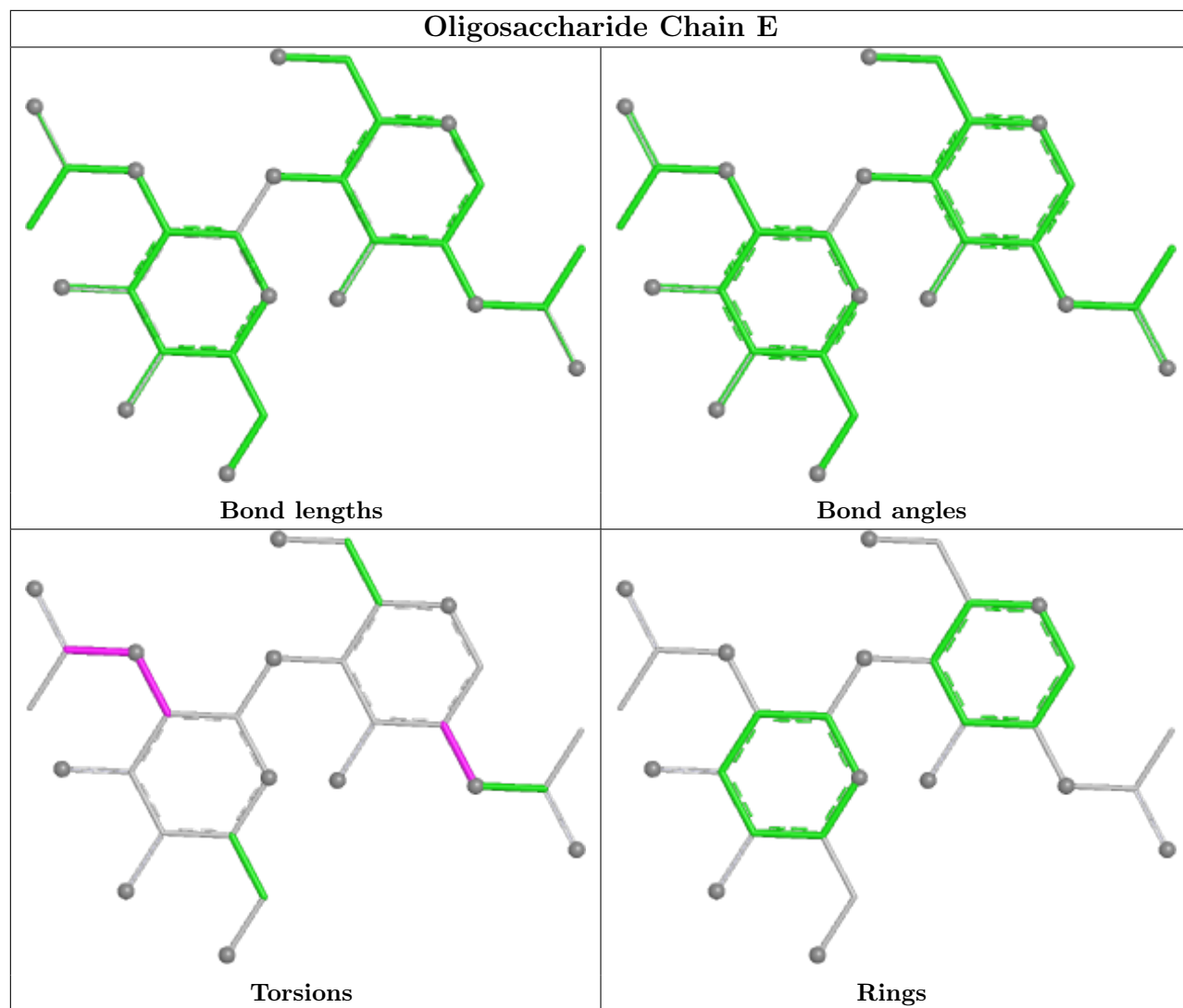
Mol	Chain	Res	Type	Atoms
3	L	2	NAG	C3-C2-N2-C7
2	I	1	NAG	C1-C2-N2-C7
2	E	1	NAG	C1-C2-N2-C7
2	E	1	NAG	C3-C2-N2-C7

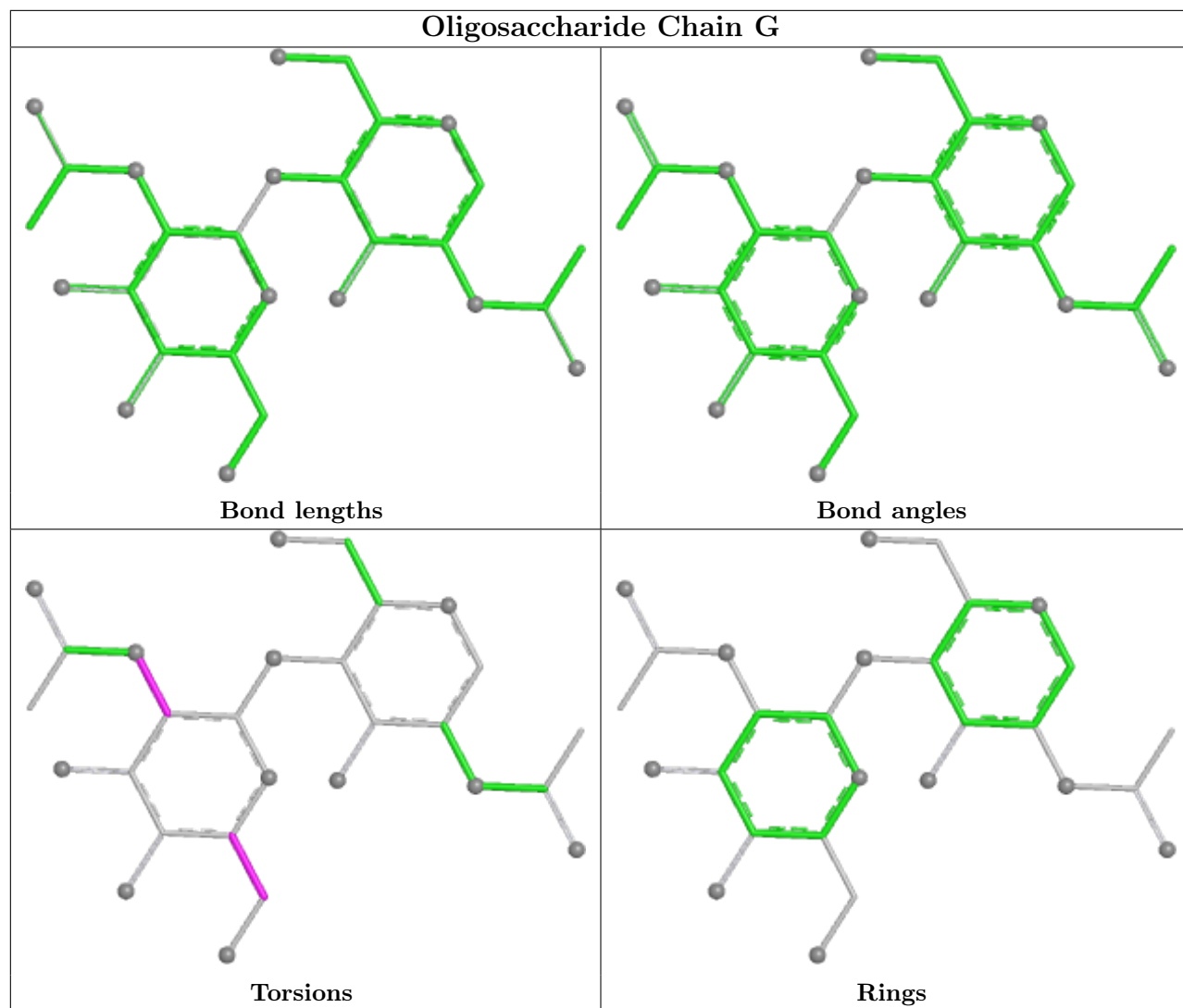
There are no ring outliers.

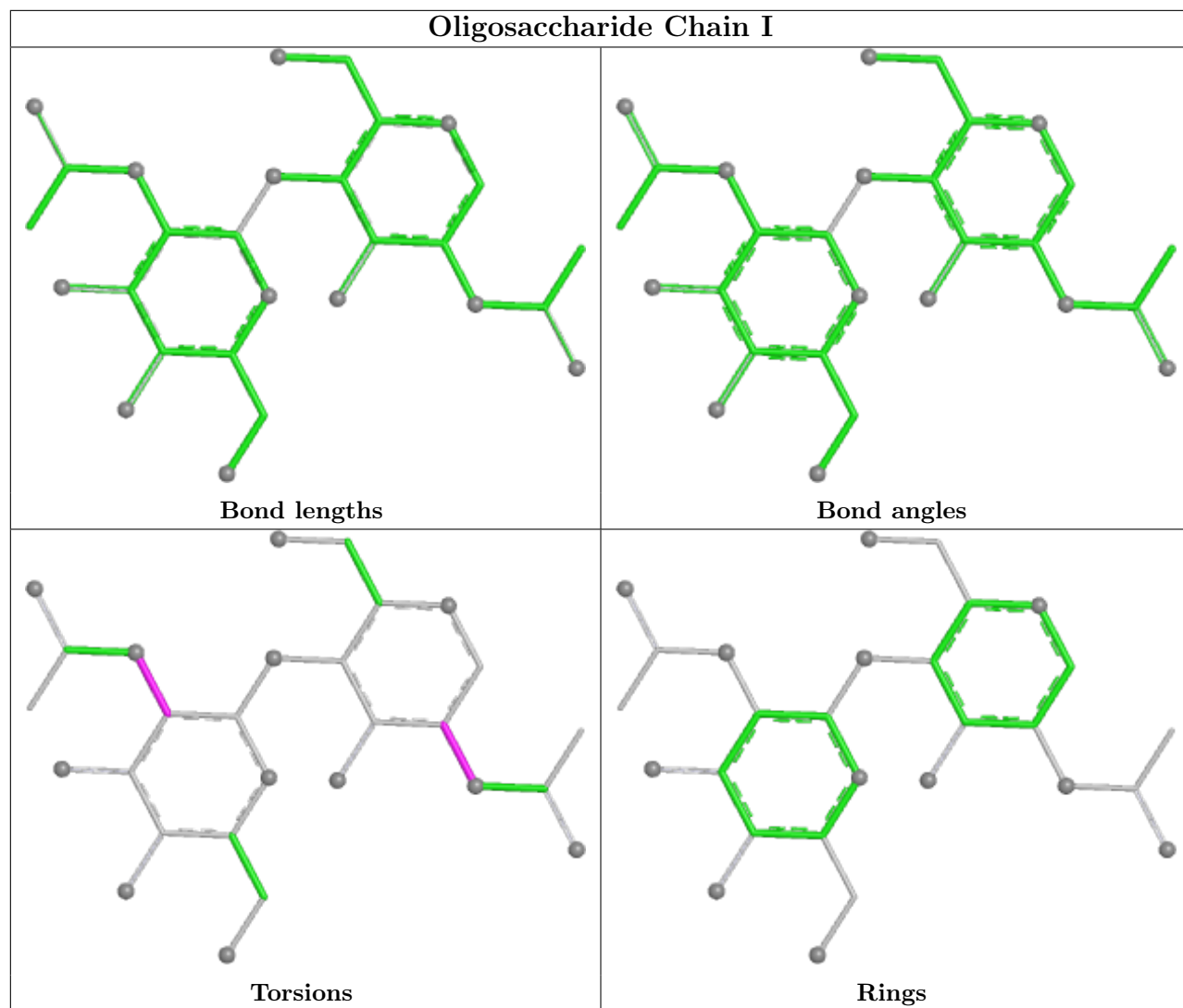
10 monomers are involved in 37 short contacts:

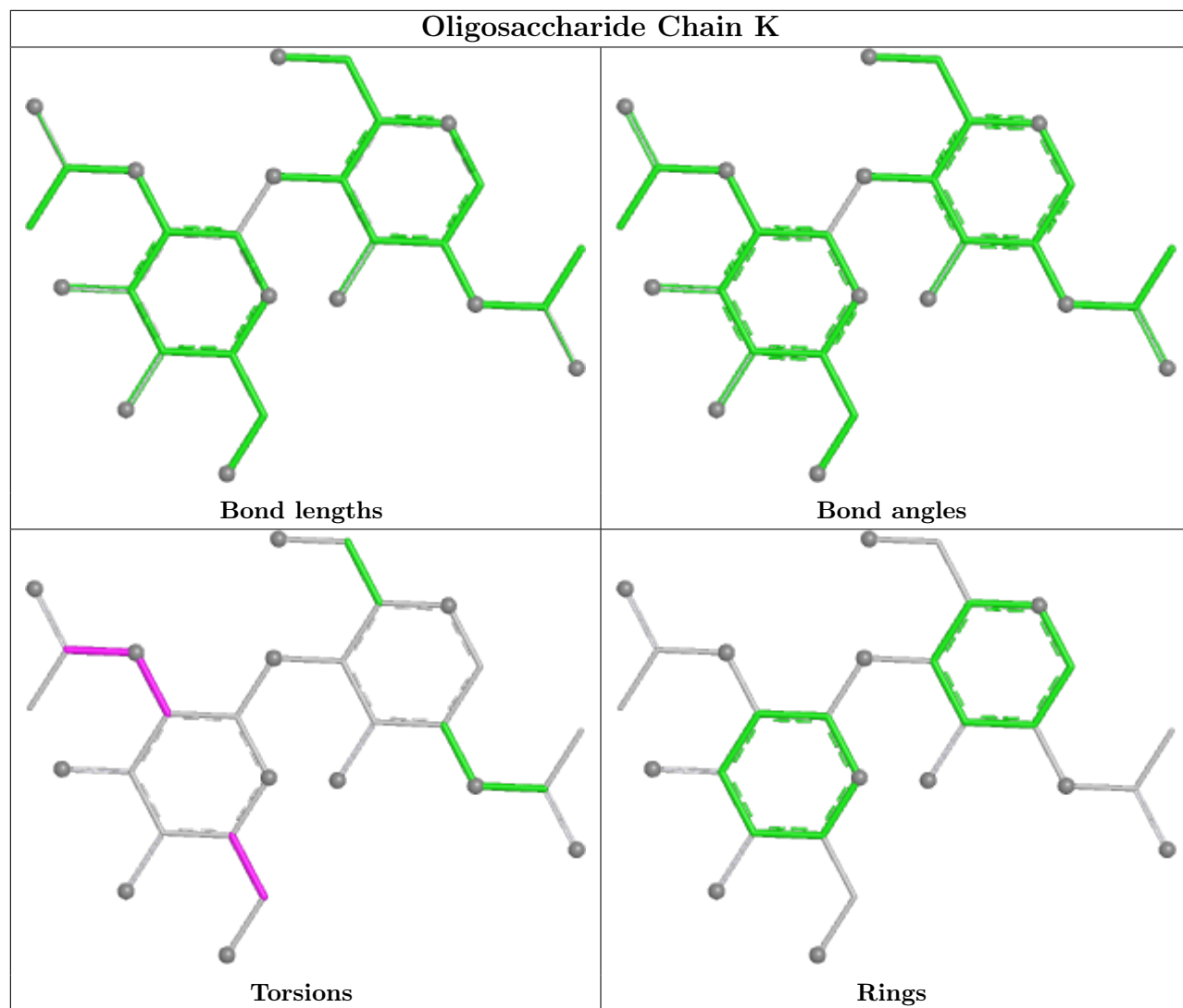
Mol	Chain	Res	Type	Clashes	Symm-Clashes
3	L	2	NAG	9	0
3	F	1	NAG	2	0
3	L	1	NAG	7	0
2	E	2	NAG	2	0
3	F	2	NAG	7	0
3	J	2	NAG	1	0
2	G	2	NAG	2	0
3	H	2	NAG	6	0
2	K	2	NAG	1	0
3	H	1	NAG	6	0

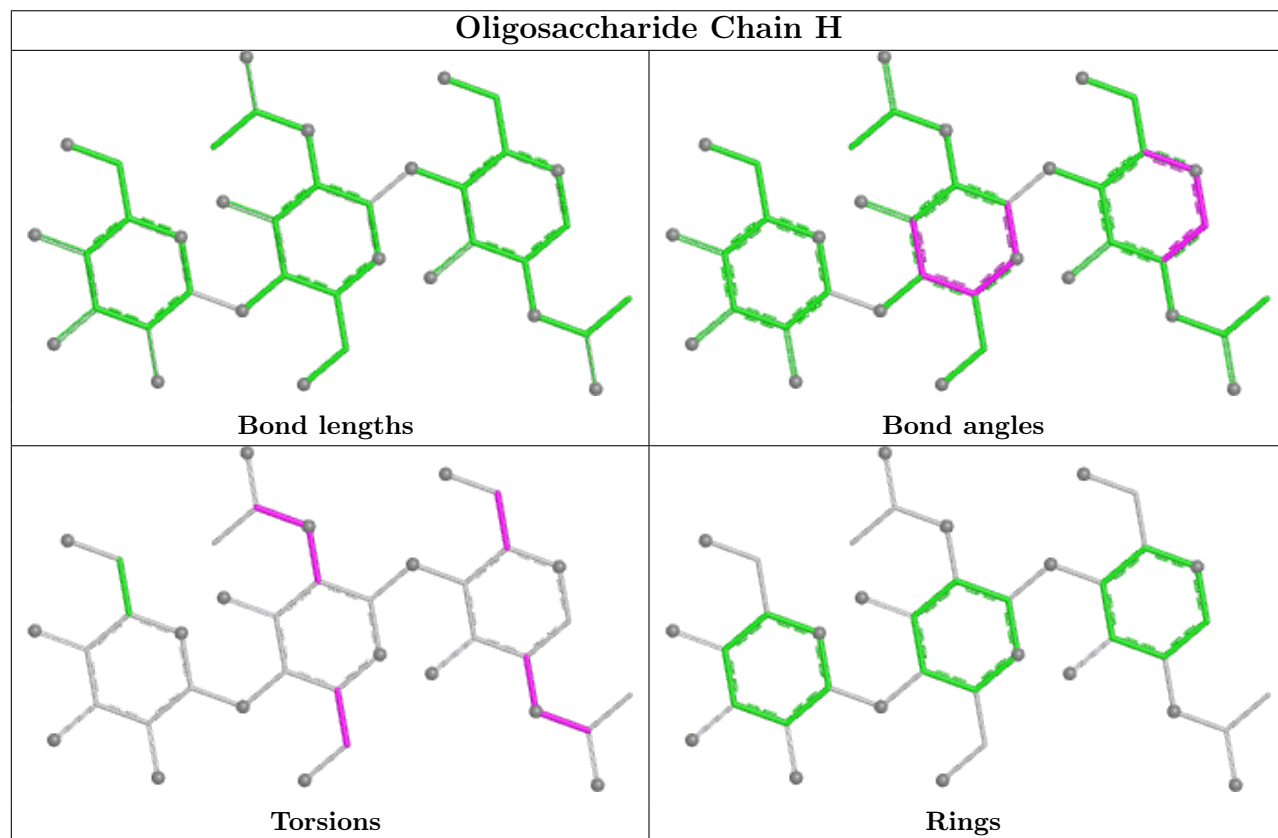
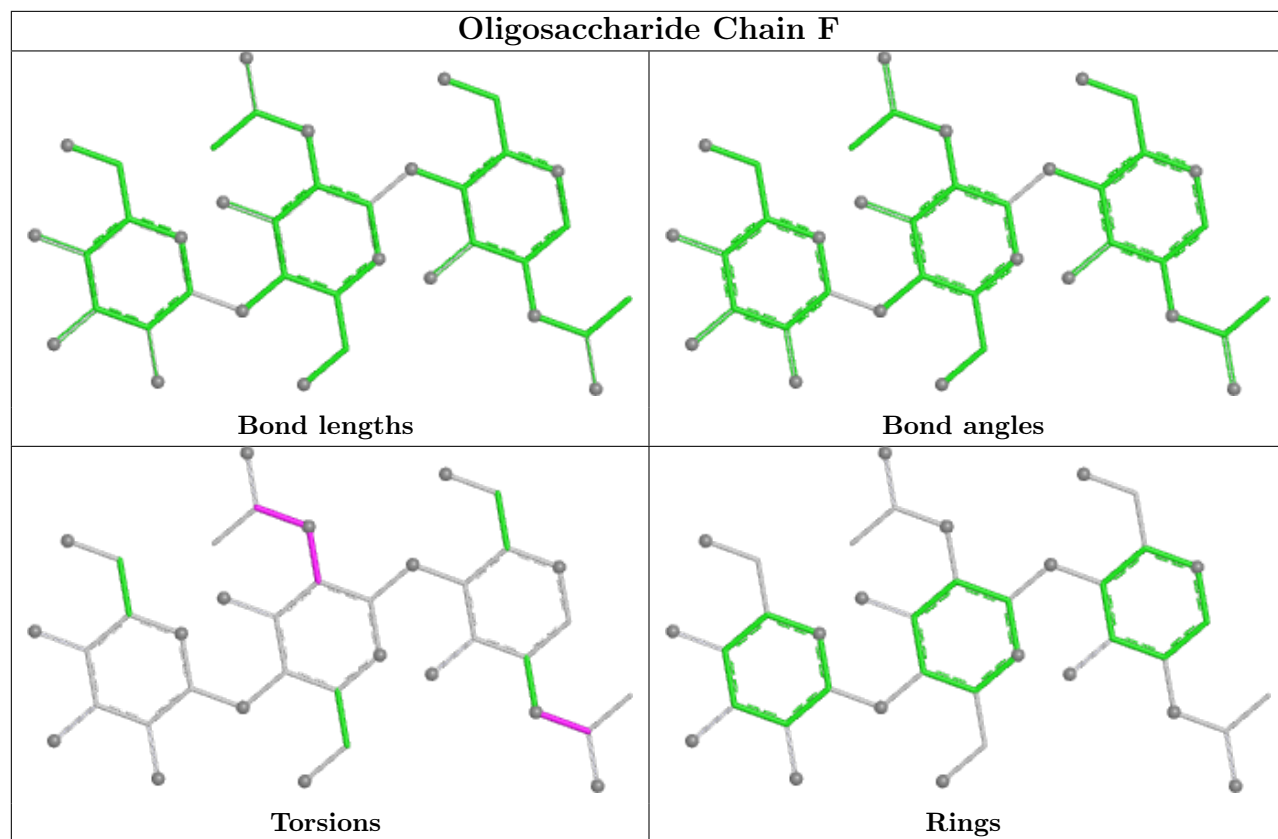
The following is a two-dimensional graphical depiction of Mogul quality analysis of bond lengths, bond angles, torsion angles, and ring geometry for oligosaccharide.

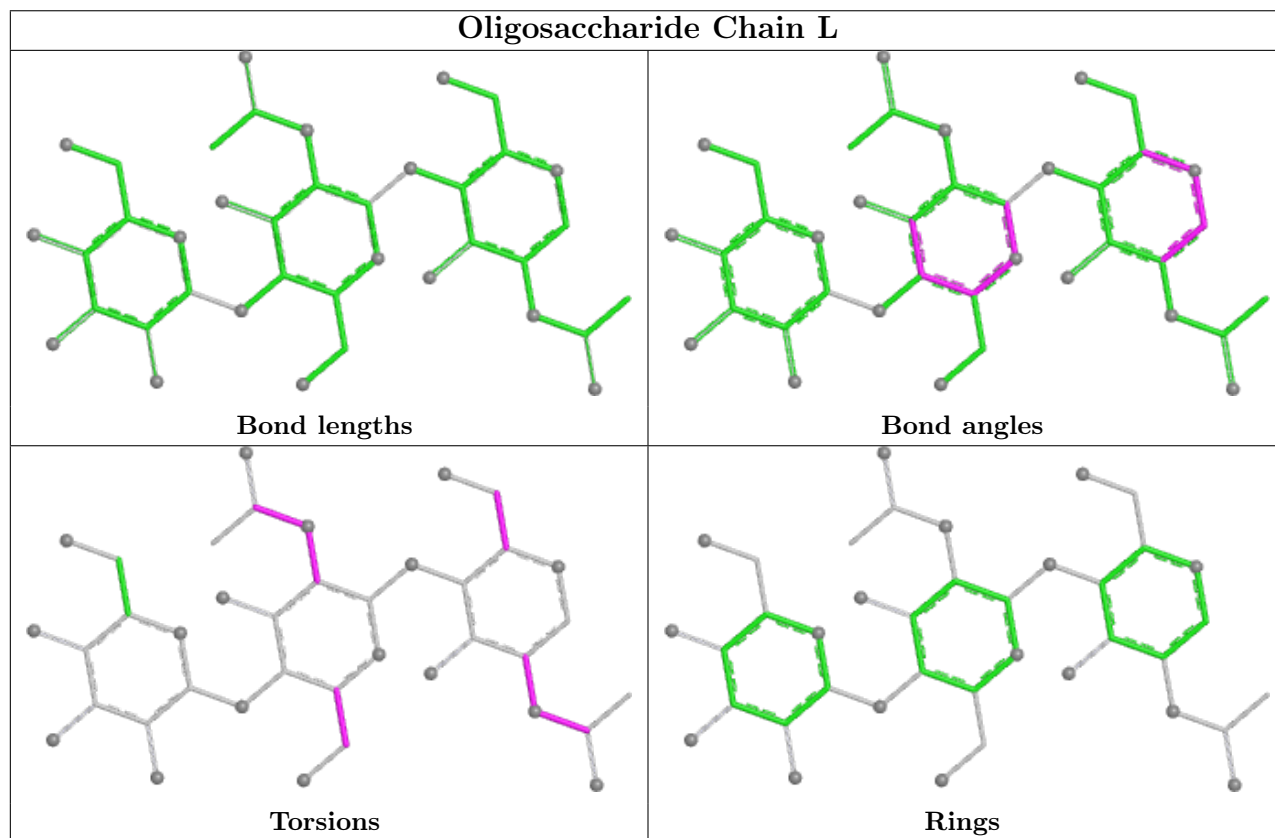
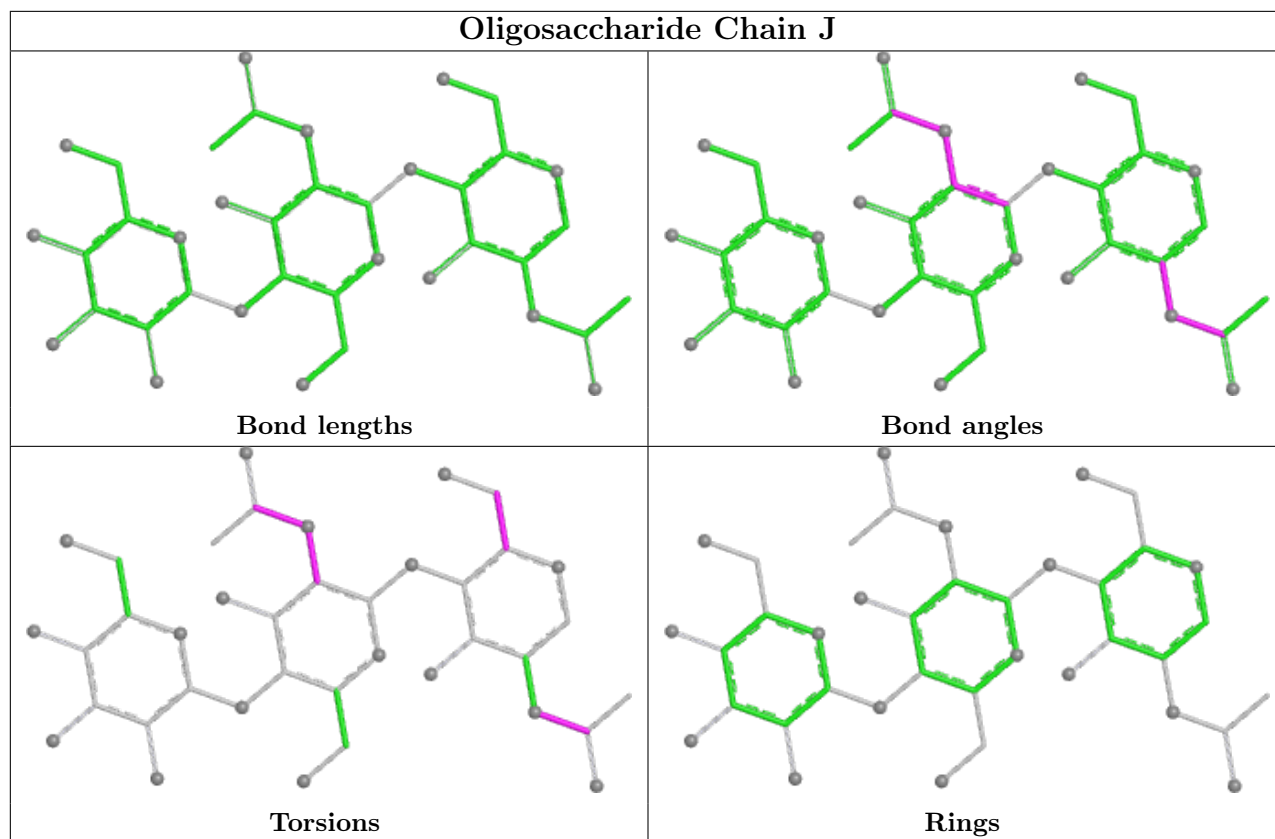












5.6 Ligand geometry

20 ligands are modelled in this entry.

In the following table, the Counts columns list the number of bonds (or angles) for which Mogul statistics could be retrieved, the number of bonds (or angles) that are observed in the model and the number of bonds (or angles) that are defined in the Chemical Component Dictionary. The Link column lists molecule types, if any, to which the group is linked. The Z score for a bond length (or angle) is the number of standard deviations the observed value is removed from the expected value. A bond length (or angle) with $|Z| > 2$ is considered an outlier worth inspection. RMSZ is the root-mean-square of all Z scores of the bond lengths (or angles).

Mol	Type	Chain	Res	Link	Bond lengths			Bond angles		
					Counts	RMSZ	# Z > 2	Counts	RMSZ	# Z > 2
4	NAG	B	2002	1	14,14,15	0.54	0	17,19,21	0.72	1 (5%)
4	NAG	D	2002	1	14,14,15	0.55	0	17,19,21	0.72	1 (5%)
4	NAG	B	2003	1	14,14,15	0.37	0	17,19,21	0.39	0
4	NAG	C	2003	1	14,14,15	0.26	0	17,19,21	1.31	1 (5%)
4	NAG	A	2001	1	14,14,15	1.17	1 (7%)	17,19,21	1.24	1 (5%)
4	NAG	A	2005	1	14,14,15	0.39	0	17,19,21	0.44	0
4	NAG	D	2001	1	14,14,15	0.87	2 (14%)	17,19,21	0.60	0
4	NAG	A	2002	1	14,14,15	0.34	0	17,19,21	0.35	0
4	NAG	A	2003	1	14,14,15	0.25	0	17,19,21	1.30	1 (5%)
4	NAG	D	2003	1	14,14,15	0.37	0	17,19,21	0.39	0
4	NAG	C	2004	1	14,14,15	0.27	0	17,19,21	0.76	0
4	NAG	A	2004	1	14,14,15	0.27	0	17,19,21	0.76	0
4	NAG	C	2002	1	14,14,15	0.35	0	17,19,21	0.34	0
4	NAG	C	2005	1	14,14,15	0.39	0	17,19,21	0.44	0
4	NAG	B	2004	1	14,14,15	0.40	0	17,19,21	0.39	0
4	NAG	D	2005	1	14,14,15	0.19	0	17,19,21	0.76	1 (5%)
4	NAG	D	2004	1	14,14,15	0.38	0	17,19,21	0.38	0
4	NAG	B	2005	1	14,14,15	0.20	0	17,19,21	0.77	1 (5%)
4	NAG	B	2001	1	14,14,15	0.88	2 (14%)	17,19,21	0.61	0
4	NAG	C	2001	1	14,14,15	1.17	1 (7%)	17,19,21	1.23	1 (5%)

In the following table, the Chirals column lists the number of chiral outliers, the number of chiral centers analysed, the number of these observed in the model and the number defined in the Chemical Component Dictionary. Similar counts are reported in the Torsion and Rings columns. '-' means no outliers of that kind were identified.

Mol	Type	Chain	Res	Link	Chirals	Torsions	Rings
4	NAG	B	2002	1	-	2/6/23/26	0/1/1/1
4	NAG	D	2002	1	-	2/6/23/26	0/1/1/1

Continued on next page...

Continued from previous page...

Mol	Type	Chain	Res	Link	Chirals	Torsions	Rings
4	NAG	B	2003	1	-	2/6/23/26	0/1/1/1
4	NAG	C	2003	1	-	4/6/23/26	0/1/1/1
4	NAG	A	2001	1	-	5/6/23/26	0/1/1/1
4	NAG	A	2005	1	-	4/6/23/26	0/1/1/1
4	NAG	D	2001	1	-	3/6/23/26	0/1/1/1
4	NAG	A	2002	1	-	3/6/23/26	0/1/1/1
4	NAG	A	2003	1	-	4/6/23/26	0/1/1/1
4	NAG	D	2003	1	-	2/6/23/26	0/1/1/1
4	NAG	C	2004	1	-	2/6/23/26	0/1/1/1
4	NAG	A	2004	1	-	2/6/23/26	0/1/1/1
4	NAG	C	2002	1	-	3/6/23/26	0/1/1/1
4	NAG	C	2005	1	-	4/6/23/26	0/1/1/1
4	NAG	B	2004	1	-	2/6/23/26	0/1/1/1
4	NAG	D	2005	1	-	3/6/23/26	0/1/1/1
4	NAG	D	2004	1	-	2/6/23/26	0/1/1/1
4	NAG	B	2005	1	-	3/6/23/26	0/1/1/1
4	NAG	B	2001	1	-	1/6/23/26	0/1/1/1
4	NAG	C	2001	1	-	5/6/23/26	0/1/1/1

All (6) bond length outliers are listed below:

Mol	Chain	Res	Type	Atoms	Z	Observed(Å)	Ideal(Å)
4	A	2001	NAG	C1-C2	4.04	1.58	1.52
4	C	2001	NAG	C1-C2	4.04	1.58	1.52
4	B	2001	NAG	C1-C2	2.37	1.55	1.52
4	D	2001	NAG	C1-C2	2.37	1.55	1.52
4	B	2001	NAG	O5-C1	2.22	1.47	1.43
4	D	2001	NAG	O5-C1	2.15	1.47	1.43

All (8) bond angle outliers are listed below:

Mol	Chain	Res	Type	Atoms	Z	Observed(°)	Ideal(°)
4	C	2003	NAG	C2-N2-C7	4.44	129.22	122.90
4	A	2003	NAG	C2-N2-C7	4.43	129.21	122.90
4	A	2001	NAG	C2-N2-C7	4.23	128.92	122.90
4	C	2001	NAG	C2-N2-C7	4.17	128.84	122.90
4	B	2005	NAG	C2-N2-C7	2.65	126.67	122.90
4	D	2005	NAG	C2-N2-C7	2.62	126.64	122.90

Continued on next page...

Continued from previous page...

Mol	Chain	Res	Type	Atoms	Z	Observed(°)	Ideal(°)
4	B	2002	NAG	C1-O5-C5	2.39	115.44	112.19
4	D	2002	NAG	C1-O5-C5	2.39	115.43	112.19

There are no chirality outliers.

All (58) torsion outliers are listed below:

Mol	Chain	Res	Type	Atoms
4	D	2001	NAG	C8-C7-N2-C2
4	D	2001	NAG	O7-C7-N2-C2
4	A	2001	NAG	C4-C5-C6-O6
4	C	2001	NAG	C4-C5-C6-O6
4	A	2004	NAG	C1-C2-N2-C7
4	A	2001	NAG	O5-C5-C6-O6
4	C	2001	NAG	O5-C5-C6-O6
4	B	2004	NAG	C1-C2-N2-C7
4	C	2004	NAG	C1-C2-N2-C7
4	D	2004	NAG	C1-C2-N2-C7
4	A	2001	NAG	C8-C7-N2-C2
4	A	2001	NAG	O7-C7-N2-C2
4	A	2003	NAG	C8-C7-N2-C2
4	A	2003	NAG	O7-C7-N2-C2
4	B	2005	NAG	C8-C7-N2-C2
4	B	2005	NAG	O7-C7-N2-C2
4	C	2003	NAG	C8-C7-N2-C2
4	C	2003	NAG	O7-C7-N2-C2
4	D	2005	NAG	C8-C7-N2-C2
4	D	2005	NAG	O7-C7-N2-C2
4	A	2002	NAG	O5-C5-C6-O6
4	C	2002	NAG	O5-C5-C6-O6
4	A	2005	NAG	O5-C5-C6-O6
4	C	2005	NAG	O5-C5-C6-O6
4	A	2005	NAG	C1-C2-N2-C7
4	C	2005	NAG	C1-C2-N2-C7
4	B	2002	NAG	O5-C5-C6-O6
4	D	2002	NAG	O5-C5-C6-O6
4	B	2005	NAG	O5-C5-C6-O6
4	D	2005	NAG	O5-C5-C6-O6
4	C	2001	NAG	C8-C7-N2-C2
4	A	2003	NAG	O5-C5-C6-O6
4	C	2003	NAG	O5-C5-C6-O6
4	C	2001	NAG	O7-C7-N2-C2
4	A	2002	NAG	C3-C2-N2-C7

Continued on next page...

Continued from previous page...

Mol	Chain	Res	Type	Atoms
4	A	2004	NAG	C3-C2-N2-C7
4	A	2005	NAG	C3-C2-N2-C7
4	B	2001	NAG	C3-C2-N2-C7
4	B	2003	NAG	C3-C2-N2-C7
4	C	2002	NAG	C3-C2-N2-C7
4	C	2004	NAG	C3-C2-N2-C7
4	C	2005	NAG	C3-C2-N2-C7
4	D	2001	NAG	C3-C2-N2-C7
4	D	2003	NAG	C3-C2-N2-C7
4	A	2005	NAG	C4-C5-C6-O6
4	C	2005	NAG	C4-C5-C6-O6
4	B	2003	NAG	C1-C2-N2-C7
4	D	2003	NAG	C1-C2-N2-C7
4	A	2002	NAG	C1-C2-N2-C7
4	C	2002	NAG	C1-C2-N2-C7
4	A	2001	NAG	C3-C2-N2-C7
4	A	2003	NAG	C3-C2-N2-C7
4	B	2002	NAG	C3-C2-N2-C7
4	B	2004	NAG	C3-C2-N2-C7
4	C	2001	NAG	C3-C2-N2-C7
4	C	2003	NAG	C3-C2-N2-C7
4	D	2002	NAG	C3-C2-N2-C7
4	D	2004	NAG	C3-C2-N2-C7

There are no ring outliers.

7 monomers are involved in 11 short contacts:

Mol	Chain	Res	Type	Clashes	Symm-Clashes
4	C	2003	NAG	1	0
4	A	2001	NAG	1	0
4	D	2001	NAG	3	0
4	A	2003	NAG	1	0
4	C	2004	NAG	2	0
4	A	2004	NAG	2	0
4	B	2004	NAG	1	0

5.7 Other polymers [i](#)

There are no such residues in this entry.

5.8 Polymer linkage issues

The following chains have linkage breaks:

Mol	Chain	Number of breaks
1	D	2
1	B	1
1	C	1

All chain breaks are listed below:

Model	Chain	Residue-1	Atom-1	Residue-2	Atom-2	Distance (Å)
1	B	168:GLN	C	169:ASP	N	1.64
1	D	168:GLN	C	169:ASP	N	1.64
1	C	949:SER	C	950:VAL	N	1.17
1	D	949:SER	C	950:VAL	N	1.12

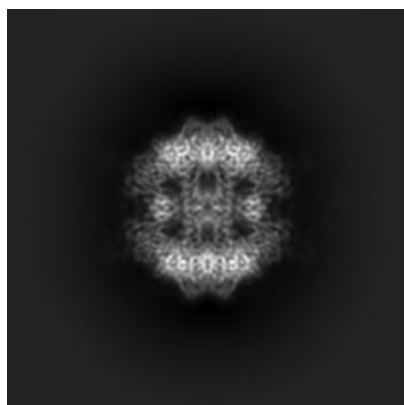
6 Map visualisation [i](#)

This section contains visualisations of the EMDB entry EMD-12753. These allow visual inspection of the internal detail of the map and identification of artifacts.

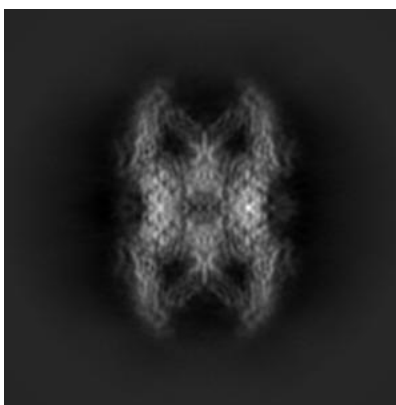
No raw map or half-maps were deposited for this entry and therefore no images, graphs, etc. pertaining to the raw map can be shown.

6.1 Orthogonal projections [i](#)

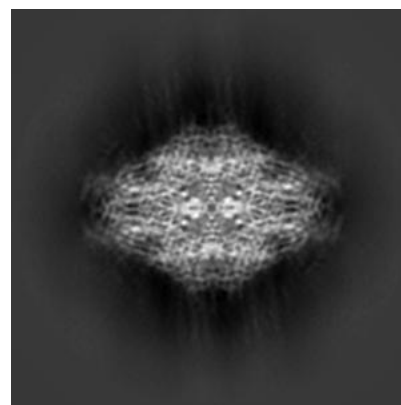
6.1.1 Primary map



X



Y

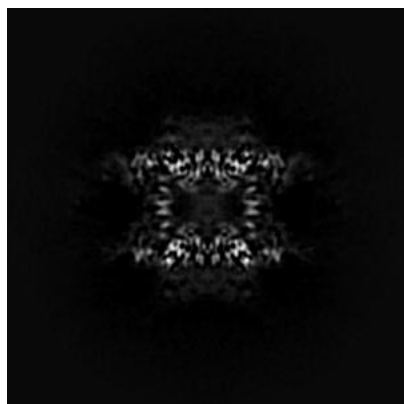


Z

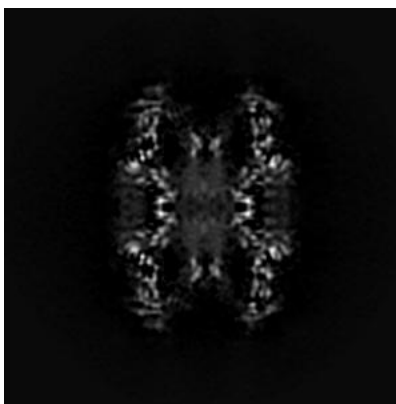
The images above show the map projected in three orthogonal directions.

6.2 Central slices [i](#)

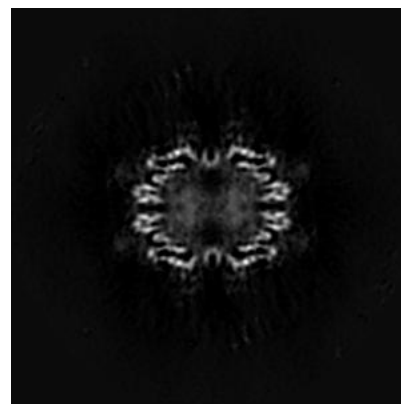
6.2.1 Primary map



X Index: 150



Y Index: 150

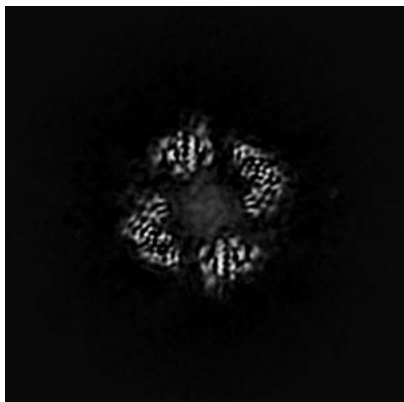


Z Index: 150

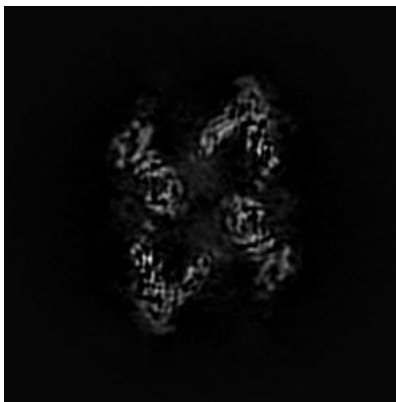
The images above show central slices of the map in three orthogonal directions.

6.3 Largest variance slices [i](#)

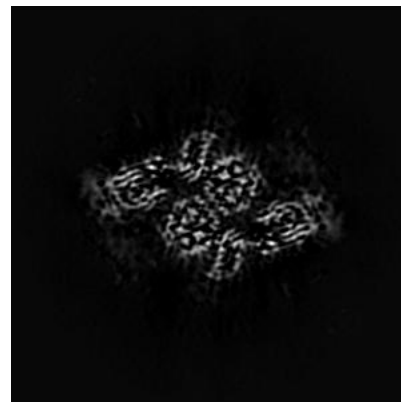
6.3.1 Primary map



X Index: 170



Y Index: 167

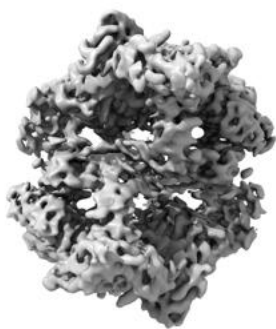


Z Index: 113

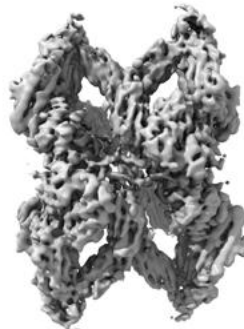
The images above show the largest variance slices of the map in three orthogonal directions.

6.4 Orthogonal surface views [i](#)

6.4.1 Primary map



X



Y



Z

The images above show the 3D surface view of the map at the recommended contour level 0.013. These images, in conjunction with the slice images, may facilitate assessment of whether an appropriate contour level has been provided.

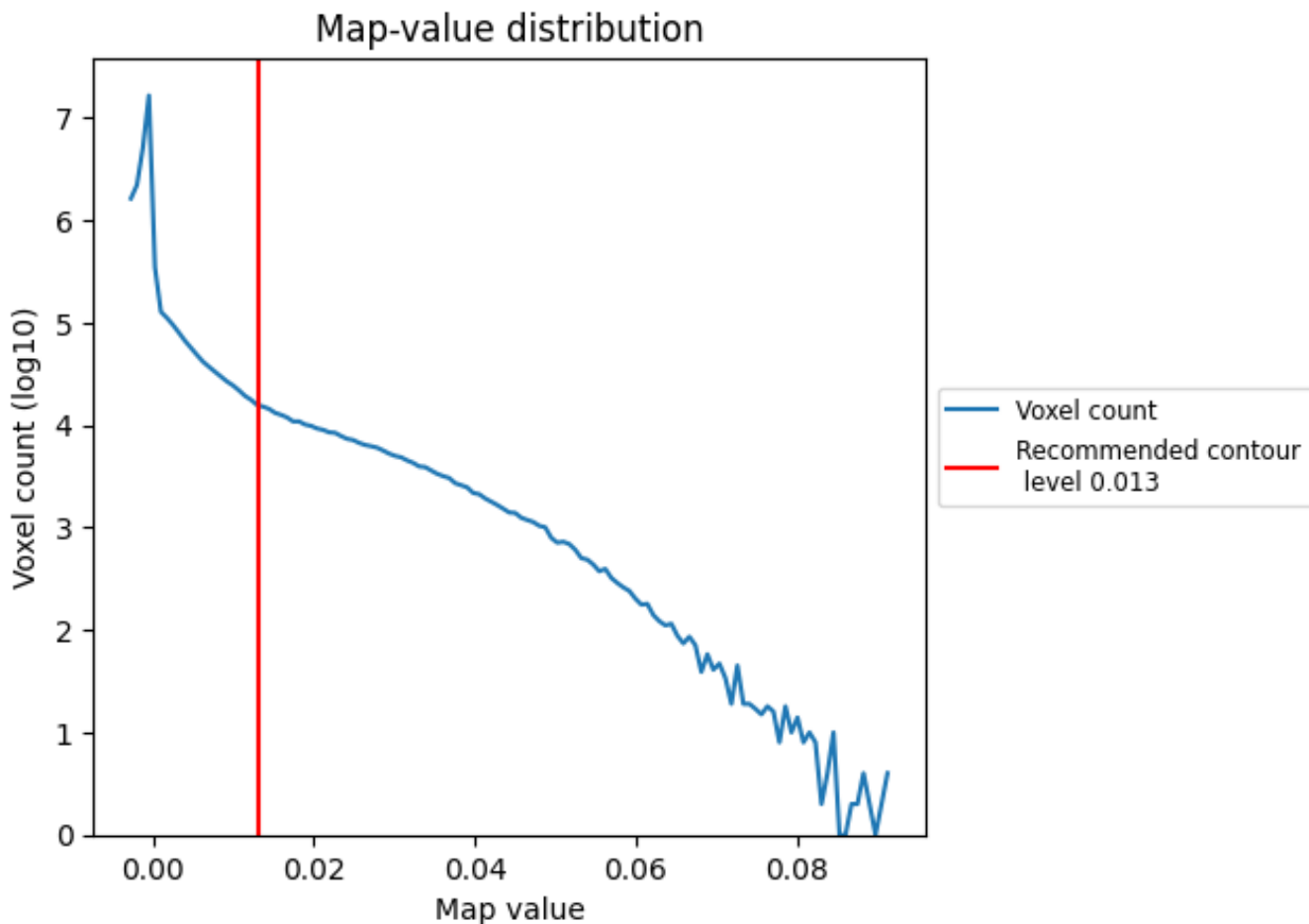
6.5 Mask visualisation

This section was not generated. No masks/segmentation were deposited.

7 Map analysis [i](#)

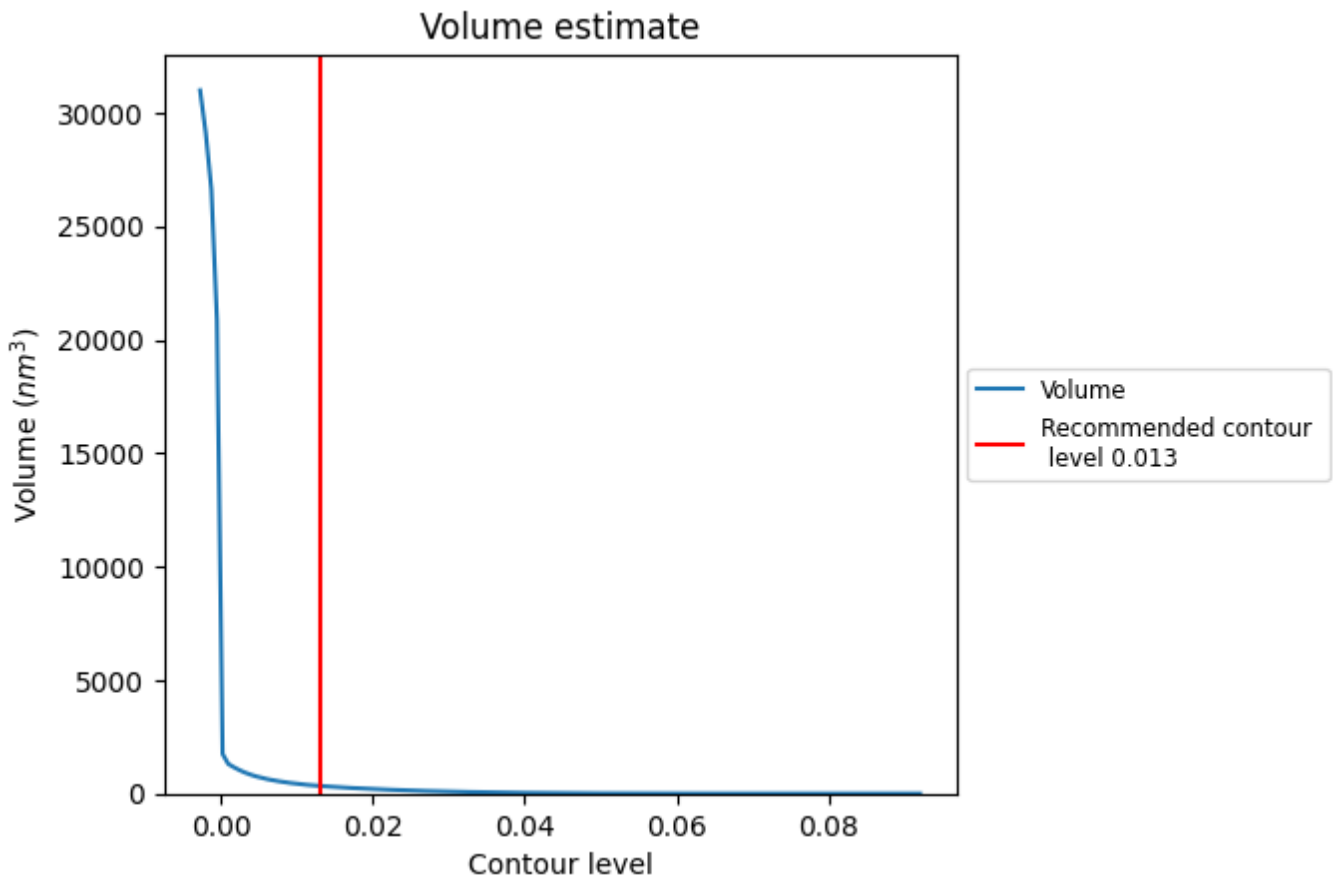
This section contains the results of statistical analysis of the map.

7.1 Map-value distribution [i](#)



The map-value distribution is plotted in 128 intervals along the x-axis. The y-axis is logarithmic. A spike in this graph at zero usually indicates that the volume has been masked.

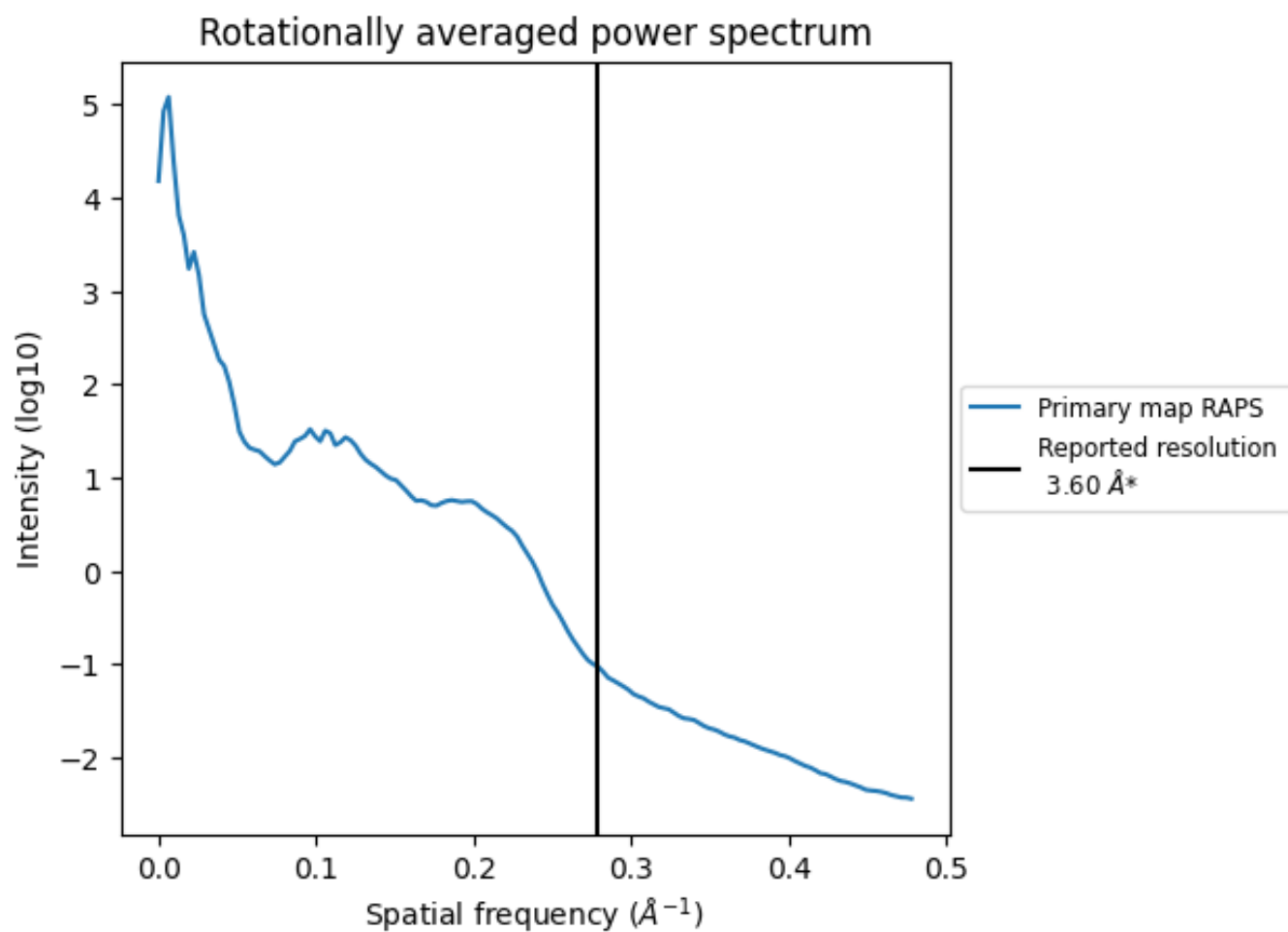
7.2 Volume estimate [i](#)



The volume at the recommended contour level is 337 nm³; this corresponds to an approximate mass of 304 kDa.

The volume estimate graph shows how the enclosed volume varies with the contour level. The recommended contour level is shown as a vertical line and the intersection between the line and the curve gives the volume of the enclosed surface at the given level.

7.3 Rotationally averaged power spectrum i



*Reported resolution corresponds to spatial frequency of 0.278 Å⁻¹

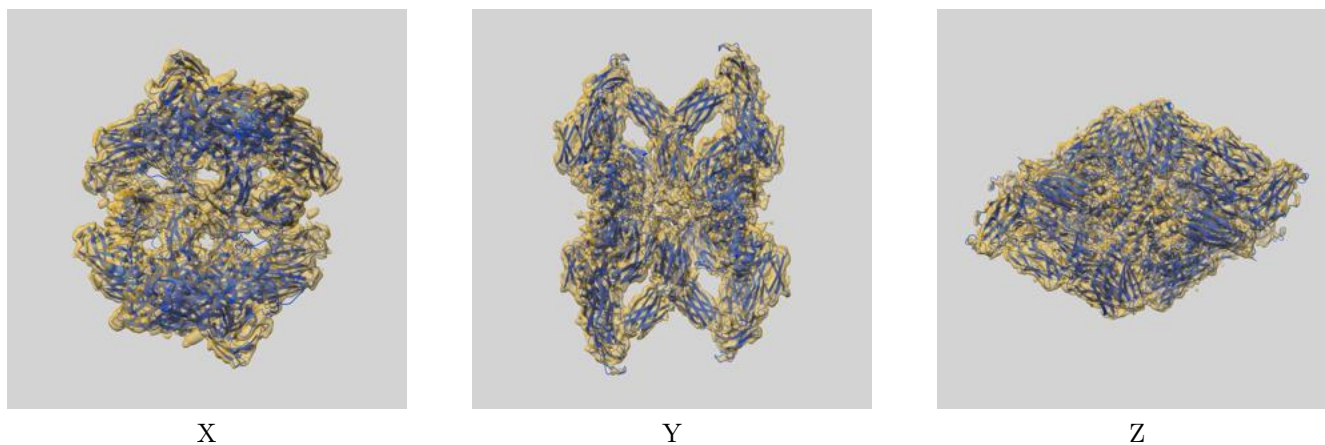
8 Fourier-Shell correlation

This section was not generated. No FSC curve or half-maps provided.

9 Map-model fit [i](#)

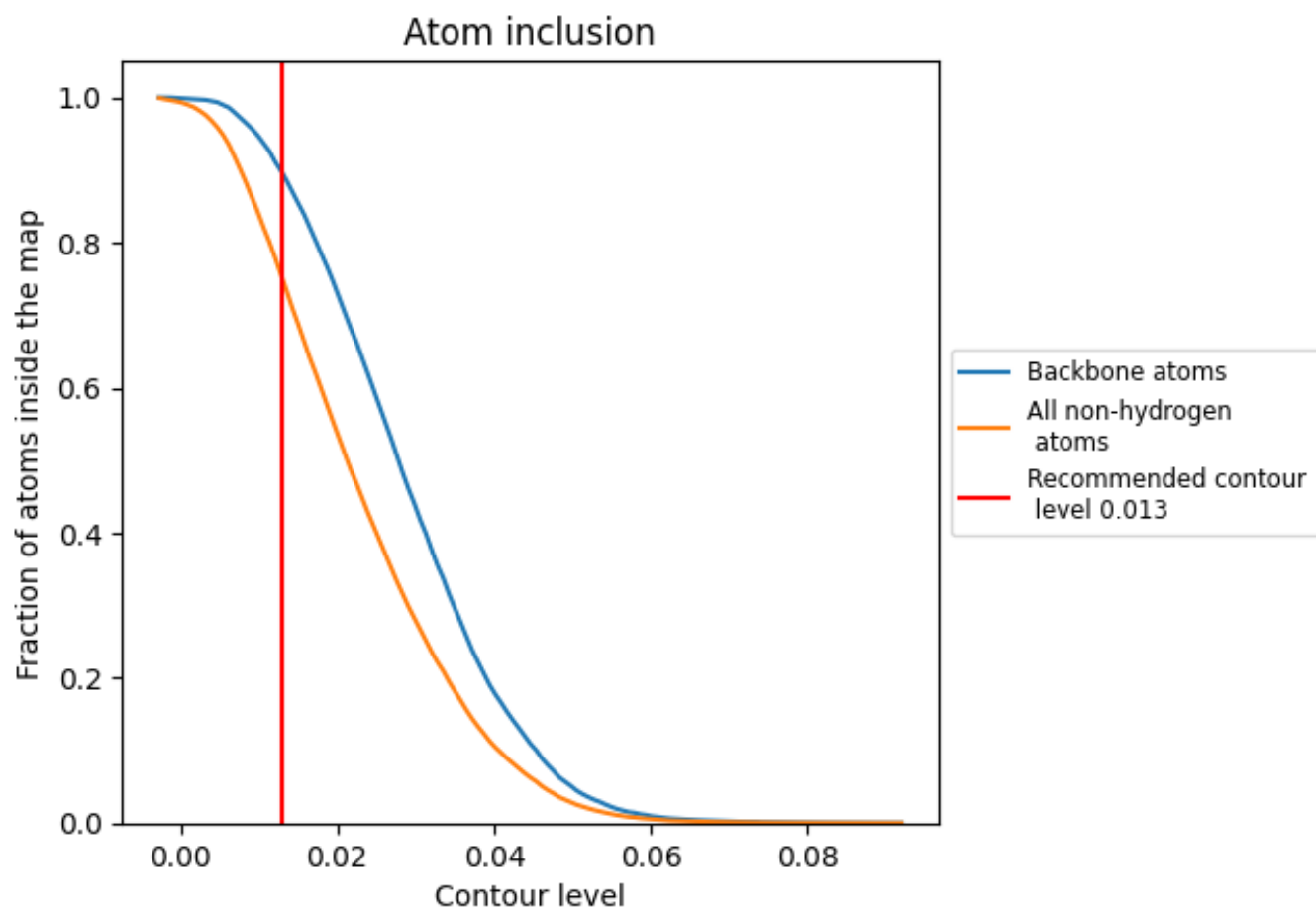
This section contains information regarding the fit between EMDB map EMD-12753 and PDB model 7O7Q. Per-residue inclusion information can be found in section 3 on page 7.

9.1 Map-model overlay [i](#)



The images above show the 3D surface view of the map at the recommended contour level 0.013 at 50% transparency in yellow overlaid with a ribbon representation of the model coloured in blue. These images allow for the visual assessment of the quality of fit between the atomic model and the map.

9.2 Atom inclusion [i](#)



At the recommended contour level, 90% of all backbone atoms, 75% of all non-hydrogen atoms, are inside the map.