



Full wwPDB X-ray Structure Validation Report ⓘ

Oct 15, 2023 – 06:49 PM EDT

PDB ID : 7SH0
Title : CRYSTAL STRUCTURE OF ENDOPLASMIC RETICULUM AMINOPEPTIDASE 2 (ERAP2) COMPLEX WITH A HIGHLY SELECTIVE AND POTENT SMALL MOLECULE
Authors : Li, L.; Bouvier, M.
Deposited on : 2021-10-07
Resolution : 3.20 Å(reported)

This is a Full wwPDB X-ray Structure Validation Report for a publicly released PDB entry.

We welcome your comments at validation@mail.wwpdb.org

A user guide is available at

<https://www.wwpdb.org/validation/2017/XrayValidationReportHelp>

with specific help available everywhere you see the ⓘ symbol.

The types of validation reports are described at

<http://www.wwpdb.org/validation/2017/FAQs#types>.

The following versions of software and data (see [references ⓘ](#)) were used in the production of this report:

MolProbity : 4.02b-467
Mogul : 1.8.5 (274361), CSD as541be (2020)
Xtrriage (Phenix) : 1.13
EDS : 2.36
buster-report : 1.1.7 (2018)
Percentile statistics : 20191225.v01 (using entries in the PDB archive December 25th 2019)
Refmac : 5.8.0158
CCP4 : 7.0.044 (Gargrove)
Ideal geometry (proteins) : Engh & Huber (2001)
Ideal geometry (DNA, RNA) : Parkinson et al. (1996)
Validation Pipeline (wwPDB-VP) : 2.36

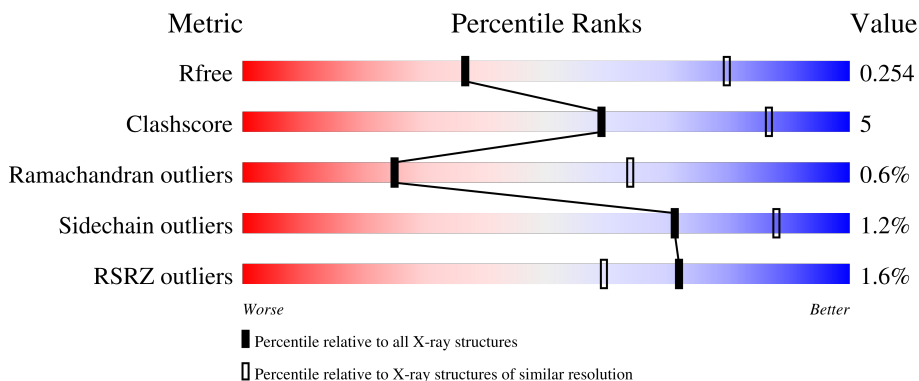
1 Overall quality at a glance

The following experimental techniques were used to determine the structure:

X-RAY DIFFRACTION

The reported resolution of this entry is 3.20 Å.

Percentile scores (ranging between 0-100) for global validation metrics of the entry are shown in the following graphic. The table shows the number of entries on which the scores are based.



Metric	Whole archive (#Entries)	Similar resolution (#Entries, resolution range(Å))
R_{free}	130704	1133 (3.20-3.20)
Clashscore	141614	1253 (3.20-3.20)
Ramachandran outliers	138981	1234 (3.20-3.20)
Sidechain outliers	138945	1233 (3.20-3.20)
RSRZ outliers	127900	1095 (3.20-3.20)

The table below summarises the geometric issues observed across the polymeric chains and their fit to the electron density. The red, orange, yellow and green segments of the lower bar indicate the fraction of residues that contain outliers for ≥ 3 , 2, 1 and 0 types of geometric quality criteria respectively. A grey segment represents the fraction of residues that are not modelled. The numeric value for each fraction is indicated below the corresponding segment, with a dot representing fractions $\leq 5\%$. The upper red bar (where present) indicates the fraction of residues that have poor fit to the electron density. The numeric value is given above the bar.

Mol	Chain	Length	Quality of chain
1	A	967	
1	B	967	

2 Entry composition

There are 7 unique types of molecules in this entry. The entry contains 14290 atoms, of which 0 are hydrogens and 0 are deuteriums.

In the tables below, the ZeroOcc column contains the number of atoms modelled with zero occupancy, the AltConf column contains the number of residues with at least one atom in alternate conformation and the Trace column contains the number of residues modelled with at most 2 atoms.

- Molecule 1 is a protein called Endoplasmic reticulum aminopeptidase 2.

Mol	Chain	Residues	Atoms					ZeroOcc	AltConf	Trace
			Total	C	N	O	S			
1	A	896	Total	C	N	O	S	0	0	0
			7298	4703	1214	1350	31			
1	B	841	Total	C	N	O	S	0	0	0
			6849	4428	1130	1264	27			

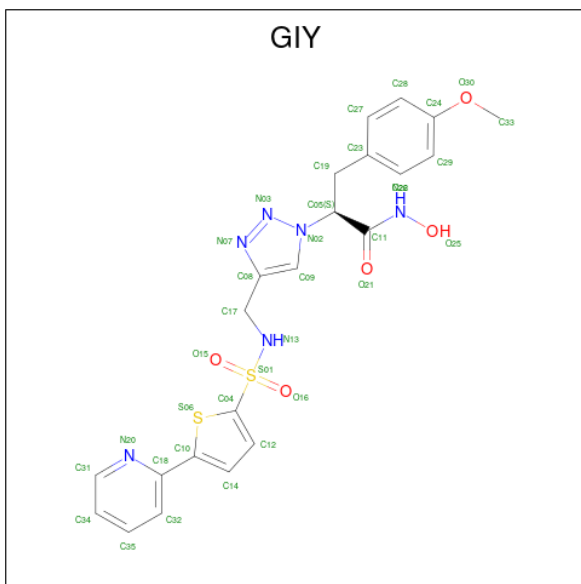
There are 16 discrepancies between the modelled and reference sequences:

Chain	Residue	Modelled	Actual	Comment	Reference
A	392	ASN	LYS	variant	UNP Q6P179
A	961	ARG	-	expression tag	UNP Q6P179
A	962	HIS	-	expression tag	UNP Q6P179
A	963	HIS	-	expression tag	UNP Q6P179
A	964	HIS	-	expression tag	UNP Q6P179
A	965	HIS	-	expression tag	UNP Q6P179
A	966	HIS	-	expression tag	UNP Q6P179
A	967	HIS	-	expression tag	UNP Q6P179
B	392	ASN	LYS	variant	UNP Q6P179
B	961	ARG	-	expression tag	UNP Q6P179
B	962	HIS	-	expression tag	UNP Q6P179
B	963	HIS	-	expression tag	UNP Q6P179
B	964	HIS	-	expression tag	UNP Q6P179
B	965	HIS	-	expression tag	UNP Q6P179
B	966	HIS	-	expression tag	UNP Q6P179
B	967	HIS	-	expression tag	UNP Q6P179

- Molecule 2 is ZINC ION (three-letter code: ZN) (formula: Zn).

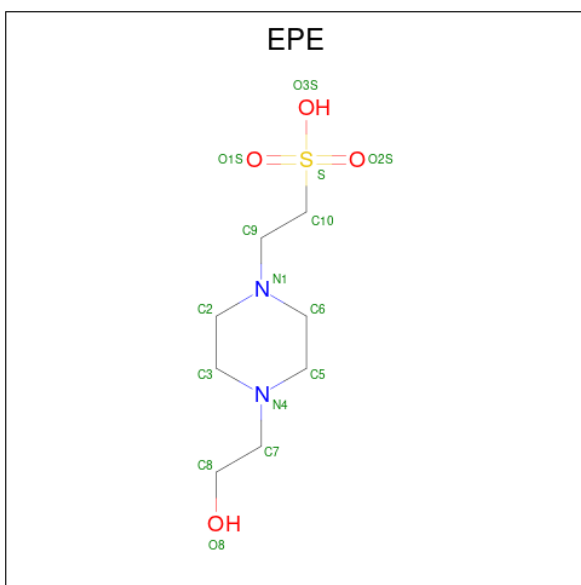
Mol	Chain	Residues	Atoms		ZeroOcc	AltConf
2	A	1	Total	Zn	0	0
			1	1		
2	B	1	Total	Zn	0	0
			1	1		

- Molecule 3 is (2S)-N-hydroxy-3-(4-methoxyphenyl)-2-[4-({[5-(pyridin-2-yl)thiophene-2-sulfonyl]amino}methyl)-1H-1,2,3-triazol-1-yl]propanamide (three-letter code: GIY) (formula: $C_{22}H_{22}N_6O_5S_2$) (labeled as "Ligand of Interest" by depositor).



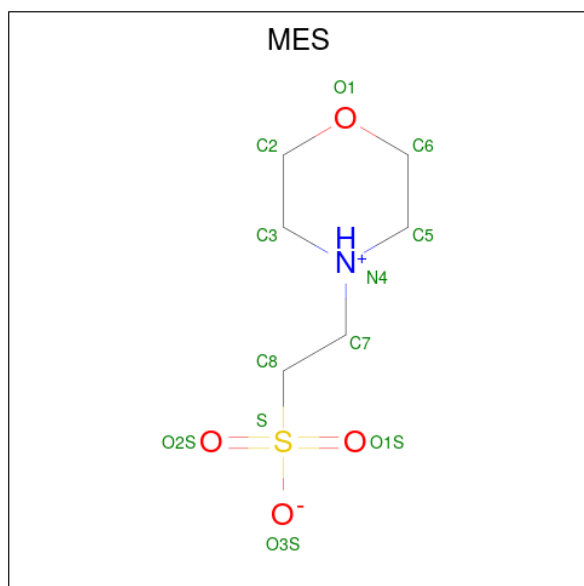
Mol	Chain	Residues	Atoms					ZeroOcc	AltConf
			Total	C	N	O	S		
3	A	1	Total	C	N	O	S	0	0
			35	22	6	5	2		
3	B	1	Total	C	N	O	S	0	0
			35	22	6	5	2		

- Molecule 4 is 4-(2-HYDROXYETHYL)-1-PIPERAZINE ETHANESULFONIC ACID (three-letter code: EPE) (formula: $C_8H_{18}N_2O_4S$).



Mol	Chain	Residues	Atoms					ZeroOcc	AltConf
			Total	C	N	O	S		
4	A	1	15	8	2	4	1	0	0

- Molecule 5 is 2-(N-MORPHOLINO)-ETHANESULFONIC ACID (three-letter code: MES) (formula: C₆H₁₃NO₄S).



Mol	Chain	Residues	Atoms					ZeroOcc	AltConf
			Total	C	N	O	S		
5	A	1	12	6	1	4	1	0	0
5	A	1	12	6	1	4	1	0	0
5	B	1	12	6	1	4	1	0	0
5	B	1	12	6	1	4	1	0	0

- Molecule 6 is SODIUM ION (three-letter code: NA) (formula: Na).

Mol	Chain	Residues	Atoms		ZeroOcc	AltConf
6	A	1	Total	Na	0	0
			1	1		

- Molecule 7 is water.

Mol	Chain	Residues	Atoms		ZeroOcc	AltConf
7	A	4	Total	O	0	0
			4	4		

Continued on next page...

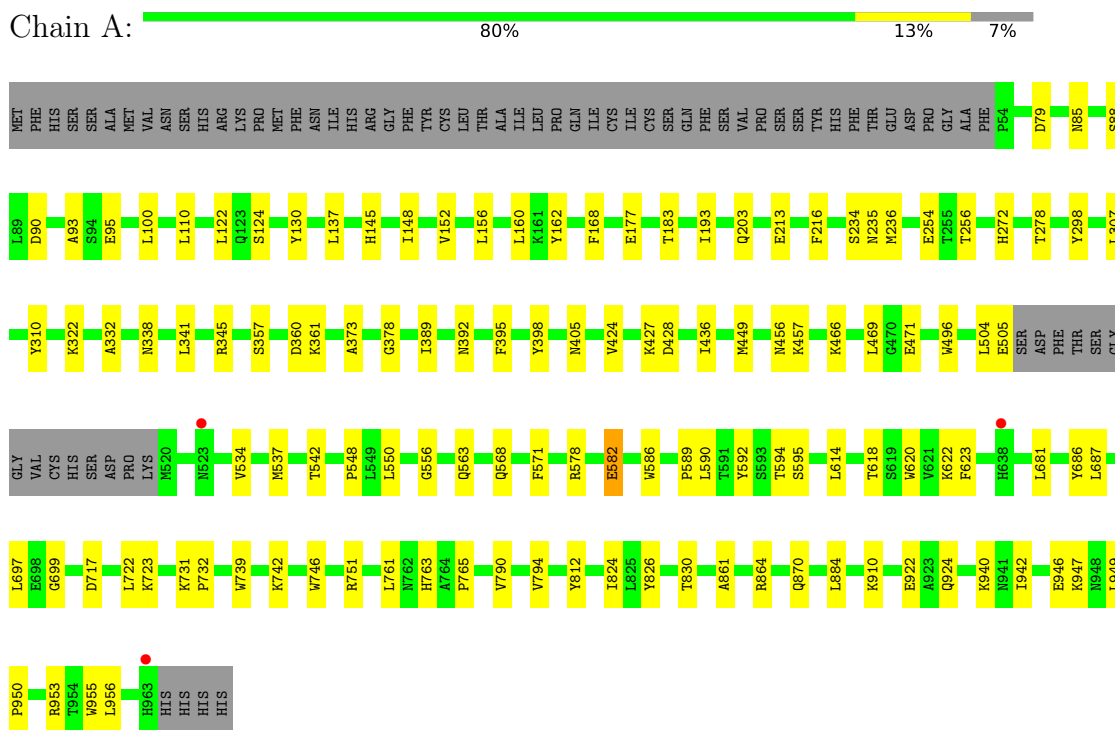
Continued from previous page...

Mol	Chain	Residues	Atoms		ZeroOcc	AltConf
7	B	3	Total	O	0	0
			3	3		

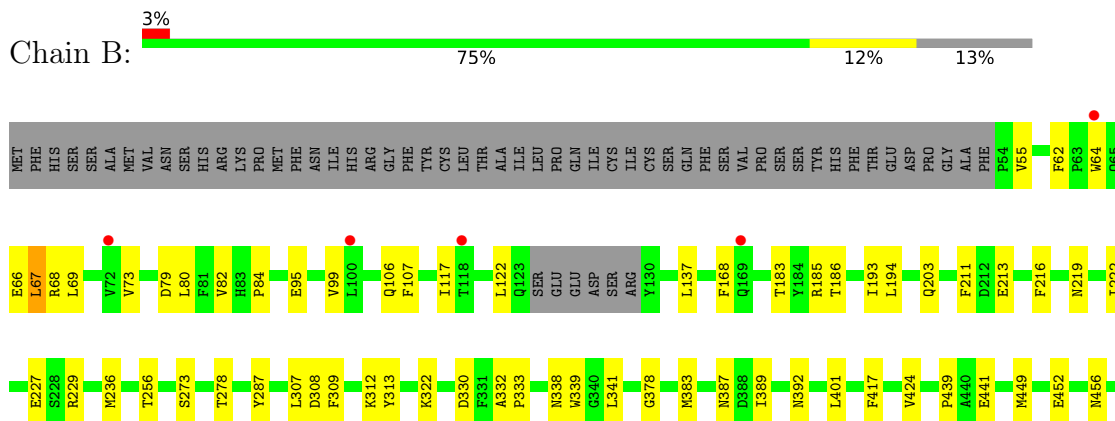
3 Residue-property plots [i](#)

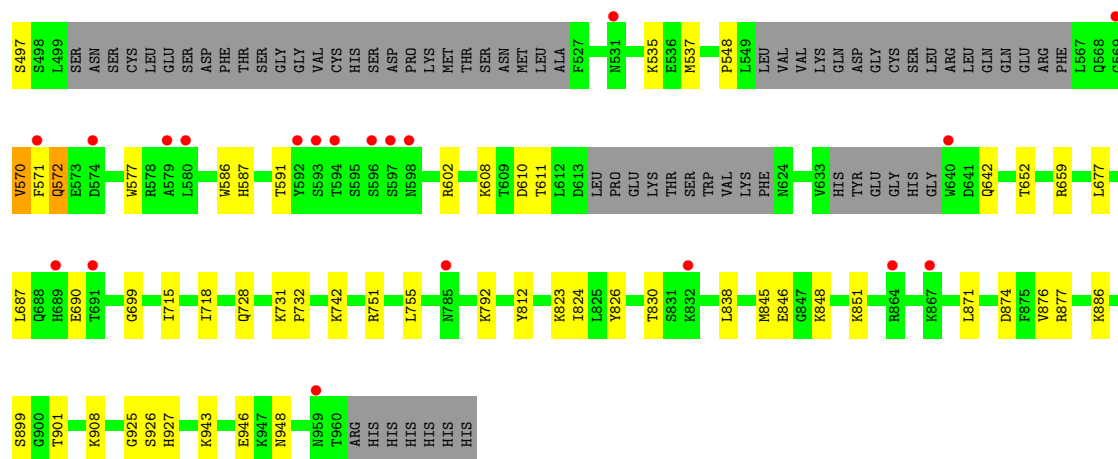
These plots are drawn for all protein, RNA, DNA and oligosaccharide chains in the entry. The first graphic for a chain summarises the proportions of the various outlier classes displayed in the second graphic. The second graphic shows the sequence view annotated by issues in geometry and electron density. Residues are color-coded according to the number of geometric quality criteria for which they contain at least one outlier: green = 0, yellow = 1, orange = 2 and red = 3 or more. A red dot above a residue indicates a poor fit to the electron density ($RSRZ > 2$). Stretches of 2 or more consecutive residues without any outlier are shown as a green connector. Residues present in the sample, but not in the model, are shown in grey.

- Molecule 1: Endoplasmic reticulum aminopeptidase 2



- Molecule 1: Endoplasmic reticulum aminopeptidase 2





4 Data and refinement statistics

Property	Value	Source
Space group	P 1 21 1	Depositor
Cell constants a, b, c, α , β , γ	75.48Å 135.95Å 129.81Å 90.00° 90.49° 90.00°	Depositor
Resolution (Å)	20.00 – 3.20 20.00 – 3.20	Depositor EDS
% Data completeness (in resolution range)	99.0 (20.00-3.20) 99.1 (20.00-3.20)	Depositor EDS
R_{merge}	0.13	Depositor
R_{sym}	(Not available)	Depositor
$\langle I/\sigma(I) \rangle$ ¹	1.44 (at 3.22Å)	Xtrriage
Refinement program	PHENIX 1.19.2_4158	Depositor
R, R_{free}	0.207 , 0.254 0.208 , 0.254	Depositor DCC
R_{free} test set	2166 reflections (5.08%)	wwPDB-VP
Wilson B-factor (Å ²)	102.9	Xtrriage
Anisotropy	0.284	Xtrriage
Bulk solvent k_{sol} (e/Å ³), B_{sol} (Å ²)	0.27 , 68.4	EDS
L-test for twinning ²	$\langle L \rangle = 0.46$, $\langle L^2 \rangle = 0.29$	Xtrriage
Estimated twinning fraction	0.018 for -h,-l,-k 0.008 for -h,l,k 0.038 for h,-k,-l	Xtrriage
F_o, F_c correlation	0.95	EDS
Total number of atoms	14290	wwPDB-VP
Average B, all atoms (Å ²)	127.0	wwPDB-VP

Xtrriage's analysis on translational NCS is as follows: *The largest off-origin peak in the Patterson function is 2.96% of the height of the origin peak. No significant pseudotranslation is detected.*

¹Intensities estimated from amplitudes.

²Theoretical values of $\langle |L| \rangle$, $\langle L^2 \rangle$ for acentric reflections are 0.5, 0.333 respectively for untwinned datasets, and 0.375, 0.2 for perfectly twinned datasets.

5 Model quality [i](#)

5.1 Standard geometry [i](#)

Bond lengths and bond angles in the following residue types are not validated in this section: GIY, NA, EPE, MES, ZN

The Z score for a bond length (or angle) is the number of standard deviations the observed value is removed from the expected value. A bond length (or angle) with $|Z| > 5$ is considered an outlier worth inspection. RMSZ is the root-mean-square of all Z scores of the bond lengths (or angles).

Mol	Chain	Bond lengths		Bond angles	
		RMSZ	# Z >5	RMSZ	# Z >5
1	A	0.24	0/7479	0.44	0/10134
1	B	0.24	0/7016	0.45	0/9506
All	All	0.24	0/14495	0.45	0/19640

There are no bond length outliers.

There are no bond angle outliers.

There are no chirality outliers.

There are no planarity outliers.

5.2 Too-close contacts [i](#)

In the following table, the Non-H and H(model) columns list the number of non-hydrogen atoms and hydrogen atoms in the chain respectively. The H(added) column lists the number of hydrogen atoms added and optimized by MolProbity. The Clashes column lists the number of clashes within the asymmetric unit, whereas Symm-Clashes lists symmetry-related clashes.

Mol	Chain	Non-H	H(model)	H(added)	Clashes	Symm-Clashes
1	A	7298	0	7247	68	0
1	B	6849	0	6816	61	0
2	A	1	0	0	0	0
2	B	1	0	0	0	0
3	A	35	0	0	0	0
3	B	35	0	0	0	0
4	A	15	0	17	0	0
5	A	24	0	24	8	0
5	B	24	0	24	3	0
6	A	1	0	0	0	0
7	A	4	0	0	0	0

Continued on next page...

Continued from previous page...

Mol	Chain	Non-H	H(model)	H(added)	Clashes	Symm-Clashes
7	B	3	0	0	0	0
All	All	14290	0	14128	132	0

The all-atom clashscore is defined as the number of clashes found per 1000 atoms (including hydrogen atoms). The all-atom clashscore for this structure is 5.

All (132) close contacts within the same asymmetric unit are listed below, sorted by their clash magnitude.

Atom-1	Atom-2	Interatomic distance (Å)	Clash overlap (Å)
1:B:66:GLU:O	1:B:68:ARG:N	2.23	0.70
1:A:742:LYS:O	1:A:751:ARG:NH2	2.26	0.69
1:A:595:SER:HG	1:A:618:THR:HG1	1.40	0.67
1:B:227:GLU:OE1	1:B:229:ARG:NH1	2.30	0.65
1:B:742:LYS:O	1:B:751:ARG:NH2	2.30	0.62
1:A:790:VAL:HG12	1:A:794:VAL:HG23	1.82	0.61
1:A:278:THR:HG21	1:A:307:LEU:HD23	1.83	0.59
1:B:122:LEU:HB2	1:B:137:LEU:HD11	1.85	0.59
1:B:183:THR:HG22	1:B:193:ILE:HG12	1.85	0.59
1:B:845:MET:O	1:B:886:LYS:NZ	2.30	0.58
1:B:908:LYS:NZ	1:B:946:GLU:OE2	2.33	0.58
1:B:278:THR:HG21	1:B:307:LEU:HD23	1.86	0.56
1:B:687:LEU:HD11	1:B:699:GLY:HA3	1.87	0.56
1:A:812:TYR:HB2	1:A:824:ILE:HG21	1.89	0.55
1:A:85:ASN:ND2	5:A:1005:MES:O2S	2.41	0.54
1:A:722:LEU:HG	1:A:956:LEU:HD11	1.89	0.54
1:B:67:LEU:HD23	1:B:441:GLU:HB3	1.90	0.54
1:A:234:SER:OG	1:A:235:ASN:N	2.41	0.53
1:A:723:LYS:HG3	1:A:761:LEU:HB3	1.90	0.53
1:B:62:PHE:HD2	1:B:64:TRP:HB3	1.73	0.53
1:B:876:VAL:HG21	1:B:901:THR:HG21	1.91	0.53
1:B:424:VAL:HG21	1:B:456:ASN:HB2	1.90	0.53
1:A:594:THR:HB	1:A:618:THR:HG21	1.91	0.53
1:A:152:VAL:HG21	1:A:156:LEU:HD21	1.90	0.52
1:A:405:ASN:ND2	5:A:1004:MES:O3S	2.35	0.52
1:A:436:ILE:HD11	1:A:457:LYS:HG2	1.91	0.52
1:B:792:LYS:HB2	1:B:823:LYS:HD2	1.91	0.52
1:A:389:ILE:HG21	1:A:449:MET:HB3	1.90	0.52
1:A:739:TRP:CE3	1:A:790:VAL:HG11	2.44	0.52
1:B:106:GLN:HG2	1:B:107:PHE:HD2	1.73	0.52
1:B:548:PRO:HB3	1:B:586:TRP:CE3	2.45	0.52
1:B:236:MET:HG2	1:B:256:THR:HG22	1.90	0.52

Continued on next page...

Continued from previous page...

Atom-1	Atom-2	Interatomic distance (Å)	Clash overlap (Å)
1:B:66:GLU:C	1:B:68:ARG:H	2.13	0.51
1:A:122:LEU:HB2	1:A:137:LEU:HD11	1.91	0.51
1:B:571:PHE:HB2	1:B:577:TRP:CD1	2.46	0.51
1:B:677:LEU:HD22	1:B:948:ASN:HB3	1.92	0.51
1:B:338:ASN:HB2	1:B:341:LEU:O	2.11	0.51
1:B:308:ASP:OD1	1:B:309:PHE:N	2.43	0.51
1:B:378:GLY:HA2	1:B:392:ASN:ND2	2.26	0.51
1:A:405:ASN:ND2	5:A:1004:MES:O2S	2.45	0.50
1:B:572:GLN:H	1:B:577:TRP:HB2	1.77	0.50
1:A:571:PHE:HE2	1:A:947:LYS:HE2	1.76	0.50
1:B:812:TYR:HB2	1:B:824:ILE:HG21	1.93	0.50
1:B:424:VAL:HG22	1:B:452:GLU:HB3	1.94	0.50
1:B:389:ILE:HG21	1:B:449:MET:HB3	1.94	0.50
1:A:122:LEU:HD11	1:A:162:TYR:HB3	1.94	0.49
1:B:591:THR:HG22	1:B:602:ARG:HG3	1.94	0.49
1:B:213:GLU:HB2	1:B:216:PHE:HD1	1.77	0.49
1:A:595:SER:HB3	1:A:620:TRP:CE2	2.48	0.48
1:B:117:ILE:HD13	1:B:168:PHE:HB3	1.96	0.48
1:A:236:MET:HG2	1:A:256:THR:HG22	1.96	0.48
1:B:401:LEU:HD22	1:B:417:PHE:CD2	2.49	0.48
1:B:387:ASN:HB3	1:B:439:PRO:HA	1.95	0.47
1:A:85:ASN:ND2	5:A:1005:MES:O3S	2.43	0.47
1:A:183:THR:HG22	1:A:193:ILE:HG12	1.97	0.47
5:B:1003:MES:H51	5:B:1003:MES:H81	1.67	0.47
1:B:537:MET:HA	1:B:587:HIS:HB2	1.97	0.47
1:A:110:LEU:HD11	1:A:148:ILE:HD11	1.96	0.47
1:A:405:ASN:ND2	5:A:1004:MES:S	2.77	0.47
1:A:424:VAL:CG2	1:A:456:ASN:HB2	2.45	0.47
1:B:846:GLU:HG3	1:B:848:LYS:H	1.80	0.46
1:B:312:LYS:HG3	1:B:313:TYR:N	2.29	0.46
1:B:571:PHE:HB2	1:B:577:TRP:HD1	1.79	0.46
1:B:330:ASP:CG	1:B:851:LYS:HZ2	2.19	0.46
1:A:548:PRO:HB3	1:A:586:TRP:CE3	2.50	0.46
1:A:861:ALA:HA	1:A:864:ARG:HE	1.81	0.46
1:B:659:ARG:NH1	1:B:690:GLU:OE2	2.48	0.46
1:A:697:LEU:HD12	1:A:746:TRP:HZ3	1.81	0.46
1:A:717:ASP:OD2	1:A:953:ARG:NH1	2.44	0.45
1:B:185:ARG:NH1	1:B:186:THR:O	2.50	0.45
1:B:497:SER:HA	1:B:535:LYS:HE2	1.99	0.45
1:B:610:ASP:OD1	1:B:611:THR:N	2.47	0.45
1:A:870:GLN:OE1	1:A:910:LYS:NZ	2.44	0.45

Continued on next page...

Continued from previous page...

Atom-1	Atom-2	Interatomic distance (Å)	Clash overlap (Å)
1:B:424:VAL:CG2	1:B:456:ASN:HB2	2.47	0.45
1:A:826:TYR:O	1:A:830:THR:HG23	2.17	0.45
1:B:715:ILE:HG21	1:B:718:ILE:HD12	1.99	0.45
1:B:570:VAL:HG11	1:B:943:LYS:HD3	1.99	0.44
1:A:469:LEU:HD21	1:A:534:VAL:HG21	2.00	0.44
1:A:338:ASN:HB2	1:A:341:LEU:O	2.17	0.44
1:A:504:LEU:HG	1:A:505:GLU:HG2	1.99	0.44
1:B:79:ASP:O	1:B:95:GLU:HA	2.18	0.44
1:B:332:ALA:HB3	1:B:333:PRO:HD3	2.00	0.44
1:B:826:TYR:O	1:B:830:THR:HG23	2.18	0.44
1:A:357:SER:N	1:A:360:ASP:OD2	2.42	0.44
1:A:681:LEU:HB3	1:A:955:TRP:CE2	2.53	0.44
1:B:213:GLU:HB2	1:B:216:PHE:CD1	2.53	0.44
1:A:949:LEU:HB3	1:A:950:PRO:HD3	1.99	0.44
1:B:731:LYS:N	1:B:732:PRO:HD2	2.32	0.44
1:A:100:LEU:HD12	1:A:160:LEU:O	2.18	0.44
1:A:582:GLU:H	1:A:582:GLU:HG3	1.65	0.44
1:A:332:ALA:O	1:A:345:ARG:NH2	2.46	0.43
1:A:496:TRP:HE1	1:A:542:THR:HG21	1.83	0.43
1:A:550:LEU:HD22	1:A:590:LEU:HD22	2.00	0.43
1:A:622:LYS:NZ	1:A:623:PHE:O	2.40	0.43
1:A:922:GLU:C	1:A:924:GLN:H	2.20	0.43
1:B:219:ASN:ND2	5:B:1003:MES:O3S	2.43	0.43
1:A:177:GLU:HB3	1:A:203:GLN:HG2	1.99	0.43
1:A:424:VAL:HG21	1:A:456:ASN:HB2	1.99	0.43
1:B:219:ASN:ND2	5:B:1003:MES:S	2.89	0.43
1:A:398:TYR:OH	1:A:466:LYS:HD3	2.18	0.43
1:A:790:VAL:HG12	1:A:790:VAL:O	2.19	0.43
1:A:124:SER:HB3	1:A:130:TYR:HB2	2.01	0.42
1:A:236:MET:HB3	1:A:254:GLU:HB3	2.01	0.42
1:A:310:TYR:CZ	1:A:373:ALA:HB2	2.54	0.42
1:B:82:VAL:HG12	1:B:84:PRO:HD3	2.00	0.42
1:A:884:LEU:HD23	1:A:884:LEU:HA	1.90	0.42
5:A:1005:MES:H81	5:A:1005:MES:H51	1.71	0.42
1:B:273:SER:HB3	1:B:287:TYR:CD2	2.54	0.42
1:B:652:THR:HA	1:B:659:ARG:NH2	2.34	0.42
1:B:755:LEU:HD23	1:B:755:LEU:HA	1.91	0.42
5:A:1004:MES:H51	5:A:1004:MES:H81	1.64	0.42
1:B:80:LEU:HB3	1:B:222:ILE:HD13	2.00	0.42
1:A:568:GLN:HB3	1:A:940:LYS:HZ3	1.85	0.42
1:A:88:SER:OG	1:A:90:ASP:OD1	2.25	0.42

Continued on next page...

Continued from previous page...

Atom-1	Atom-2	Interatomic distance (Å)	Clash overlap (Å)
1:A:79:ASP:O	1:A:95:GLU:HA	2.20	0.41
1:A:378:GLY:HA2	1:A:392:ASN:ND2	2.35	0.41
1:A:592:TYR:HE1	1:A:614:LEU:HD12	1.85	0.41
1:A:504:LEU:HD12	1:A:505:GLU:H	1.86	0.41
1:A:85:ASN:ND2	5:A:1005:MES:S	2.92	0.41
1:A:213:GLU:HB2	1:A:216:PHE:CD1	2.56	0.41
1:A:298:TYR:CZ	1:A:361:LYS:HD2	2.55	0.41
1:B:69:LEU:HD13	1:B:211:PHE:HD1	1.86	0.41
1:B:838:LEU:HD23	1:B:838:LEU:HA	1.93	0.41
1:B:838:LEU:HG	1:B:871:LEU:HD11	2.03	0.41
1:B:874:ASP:OD1	1:B:877:ARG:NH2	2.53	0.41
1:A:687:LEU:HD11	1:A:699:GLY:HA3	2.02	0.40
1:B:73:VAL:HG13	1:B:99:VAL:HB	2.03	0.40
1:A:537:MET:HE2	1:A:589:PRO:HD3	2.04	0.40
1:A:731:LYS:N	1:A:732:PRO:HD2	2.36	0.40
1:A:942:ILE:O	1:A:946:GLU:HG2	2.22	0.40
1:A:93:ALA:HB3	1:A:168:PHE:CE2	2.57	0.40
1:A:763:HIS:CD2	1:A:765:PRO:HD2	2.57	0.40

There are no symmetry-related clashes.

5.3 Torsion angles [i](#)

5.3.1 Protein backbone [i](#)

In the following table, the Percentiles column shows the percent Ramachandran outliers of the chain as a percentile score with respect to all X-ray entries followed by that with respect to entries of similar resolution.

The Analysed column shows the number of residues for which the backbone conformation was analysed, and the total number of residues.

Mol	Chain	Analysed	Favoured	Allowed	Outliers	Percentiles	
1	A	892/967 (92%)	851 (95%)	39 (4%)	2 (0%)	47	79
1	B	829/967 (86%)	779 (94%)	42 (5%)	8 (1%)	15	54
All	All	1721/1934 (89%)	1630 (95%)	81 (5%)	10 (1%)	25	64

All (10) Ramachandran outliers are listed below:

Mol	Chain	Res	Type
1	A	582	GLU
1	B	55	VAL
1	B	67	LEU
1	B	608	LYS
1	B	926	SER
1	B	925	GLY
1	B	927	HIS
1	B	570	VAL
1	B	572	GLN
1	A	556	GLY

5.3.2 Protein sidechains [i](#)

In the following table, the Percentiles column shows the percent sidechain outliers of the chain as a percentile score with respect to all X-ray entries followed by that with respect to entries of similar resolution.

The Analysed column shows the number of residues for which the sidechain conformation was analysed, and the total number of residues.

Mol	Chain	Analysed	Rotameric	Outliers	Percentiles
1	A	806/870 (93%)	796 (99%)	10 (1%)	71 88
1	B	755/870 (87%)	747 (99%)	8 (1%)	73 88
All	All	1561/1740 (90%)	1543 (99%)	18 (1%)	71 88

All (18) residues with a non-rotameric sidechain are listed below:

Mol	Chain	Res	Type
1	A	145	HIS
1	A	272	HIS
1	A	322	LYS
1	A	395	PHE
1	A	427	LYS
1	A	428	ASP
1	A	471	GLU
1	A	563	GLN
1	A	578	ARG
1	A	686	TYR
1	B	194	LEU
1	B	203	GLN
1	B	322	LYS
1	B	339	TRP

Continued on next page...

Continued from previous page...

Mol	Chain	Res	Type
1	B	383	MET
1	B	642	GLN
1	B	728	GLN
1	B	899	SER

Sometimes sidechains can be flipped to improve hydrogen bonding and reduce clashes. There are no such sidechains identified.

5.3.3 RNA [i](#)

There are no RNA molecules in this entry.

5.4 Non-standard residues in protein, DNA, RNA chains [i](#)

There are no non-standard protein/DNA/RNA residues in this entry.

5.5 Carbohydrates [i](#)

There are no monosaccharides in this entry.

5.6 Ligand geometry [i](#)

Of 10 ligands modelled in this entry, 3 are monoatomic - leaving 7 for Mogul analysis.

In the following table, the Counts columns list the number of bonds (or angles) for which Mogul statistics could be retrieved, the number of bonds (or angles) that are observed in the model and the number of bonds (or angles) that are defined in the Chemical Component Dictionary. The Link column lists molecule types, if any, to which the group is linked. The Z score for a bond length (or angle) is the number of standard deviations the observed value is removed from the expected value. A bond length (or angle) with $|Z| > 2$ is considered an outlier worth inspection. RMSZ is the root-mean-square of all Z scores of the bond lengths (or angles).

Mol	Type	Chain	Res	Link	Bond lengths			Bond angles		
					Counts	RMSZ	# Z > 2	Counts	RMSZ	# Z > 2
5	MES	A	1005	-	12,12,12	2.28	1 (8%)	14,16,16	1.84	5 (35%)
5	MES	A	1004	-	12,12,12	2.30	1 (8%)	14,16,16	1.88	4 (28%)
5	MES	B	1003	-	12,12,12	2.23	1 (8%)	14,16,16	1.82	5 (35%)
4	EPE	A	1003	-	15,15,15	0.86	1 (6%)	18,20,20	1.98	7 (38%)
3	GIY	B	1002	2	36,38,38	2.43	7 (19%)	35,53,53	3.04	10 (28%)

Mol	Type	Chain	Res	Link	Bond lengths			Bond angles		
					Counts	RMSZ	# Z > 2	Counts	RMSZ	# Z > 2
5	MES	B	1004	-	12,12,12	2.26	1 (8%)	14,16,16	1.85	4 (28%)
3	GIY	A	1002	2	36,38,38	2.44	7 (19%)	35,53,53	3.07	10 (28%)

In the following table, the Chirals column lists the number of chiral outliers, the number of chiral centers analysed, the number of these observed in the model and the number defined in the Chemical Component Dictionary. Similar counts are reported in the Torsion and Rings columns. '-' means no outliers of that kind were identified.

Mol	Type	Chain	Res	Link	Chirals	Torsions	Rings
5	MES	A	1005	-	-	0/6/14/14	0/1/1/1
5	MES	A	1004	-	-	0/6/14/14	0/1/1/1
5	MES	B	1003	-	-	0/6/14/14	0/1/1/1
4	EPE	A	1003	-	-	6/9/19/19	0/1/1/1
3	GIY	B	1002	2	-	3/18/32/32	0/4/4/4
5	MES	B	1004	-	-	0/6/14/14	0/1/1/1
3	GIY	A	1002	2	-	3/18/32/32	0/4/4/4

All (19) bond length outliers are listed below:

Mol	Chain	Res	Type	Atoms	Z	Observed(Å)	Ideal(Å)
3	A	1002	GIY	C11-N22	8.70	1.45	1.33
3	B	1002	GIY	C11-N22	8.54	1.45	1.33
5	A	1004	MES	C8-S	-7.69	1.66	1.77
5	A	1005	MES	C8-S	-7.61	1.66	1.77
5	B	1004	MES	C8-S	-7.55	1.66	1.77
5	B	1003	MES	C8-S	-7.44	1.66	1.77
3	B	1002	GIY	S01-N13	6.32	1.71	1.61
3	A	1002	GIY	S01-N13	6.20	1.71	1.61
3	B	1002	GIY	C09-C08	6.20	1.45	1.36
3	A	1002	GIY	C09-C08	6.18	1.45	1.36
3	A	1002	GIY	C04-S01	3.48	1.82	1.76
3	B	1002	GIY	C04-S01	3.41	1.82	1.76
3	A	1002	GIY	O16-S01	3.12	1.47	1.43
3	B	1002	GIY	O16-S01	3.11	1.47	1.43
3	B	1002	GIY	O15-S01	3.09	1.47	1.43
3	A	1002	GIY	O15-S01	3.01	1.46	1.43
4	A	1003	EPE	C10-S	2.93	1.81	1.77
3	B	1002	GIY	O21-C11	-2.29	1.18	1.23
3	A	1002	GIY	O21-C11	-2.24	1.18	1.23

All (45) bond angle outliers are listed below:

Mol	Chain	Res	Type	Atoms	Z	Observed(°)	Ideal(°)
3	A	1002	GIY	O16-S01-O15	-14.77	101.39	119.55
3	B	1002	GIY	O16-S01-O15	-14.68	101.50	119.55
4	A	1003	EPE	C5-N4-C3	4.64	119.26	108.83
3	A	1002	GIY	C09-C08-N07	-4.10	105.24	111.34
3	B	1002	GIY	C09-C08-N07	-3.97	105.43	111.34
5	B	1004	MES	C5-N4-C3	3.94	117.70	108.83
5	A	1004	MES	C5-N4-C3	3.90	117.61	108.83
5	A	1005	MES	C5-N4-C3	3.89	117.59	108.83
3	A	1002	GIY	C31-N20-C18	3.78	122.53	117.23
5	B	1003	MES	C5-N4-C3	3.76	117.30	108.83
3	B	1002	GIY	C31-N20-C18	3.70	122.42	117.23
3	A	1002	GIY	C09-N02-C05	3.62	129.62	125.62
3	B	1002	GIY	C09-N02-C05	3.51	129.50	125.62
3	A	1002	GIY	O15-S01-C04	3.34	113.15	107.66
3	B	1002	GIY	O21-C11-N22	-3.30	119.00	123.27
3	A	1002	GIY	O16-S01-N13	3.19	112.03	107.04
3	B	1002	GIY	O16-S01-N13	3.09	111.87	107.04
3	B	1002	GIY	O15-S01-C04	2.99	112.58	107.66
3	A	1002	GIY	O21-C11-N22	-2.98	119.41	123.27
3	B	1002	GIY	O15-S01-N13	2.93	111.62	107.04
4	A	1003	EPE	C7-N4-C3	2.93	118.73	111.23
4	A	1003	EPE	C7-N4-C5	2.90	118.65	111.23
3	A	1002	GIY	O15-S01-N13	2.88	111.55	107.04
5	B	1004	MES	O3S-S-C8	2.83	110.35	105.77
3	A	1002	GIY	O16-S01-C04	2.82	112.31	107.66
5	A	1004	MES	O2S-S-C8	2.63	110.08	106.92
3	B	1002	GIY	O16-S01-C04	2.61	111.96	107.66
5	A	1004	MES	C6-C5-N4	-2.60	106.16	110.10
5	B	1003	MES	O1S-S-C8	2.49	109.91	106.92
5	A	1005	MES	O2S-S-C8	2.47	109.89	106.92
5	A	1004	MES	O1S-S-C8	2.45	109.86	106.92
5	B	1004	MES	C6-C5-N4	-2.41	106.44	110.10
5	A	1005	MES	C6-C5-N4	-2.40	106.46	110.10
4	A	1003	EPE	O3S-S-C10	2.32	109.51	105.77
5	B	1003	MES	O3S-S-C8	2.31	109.51	105.77
4	A	1003	EPE	O1S-S-C10	2.28	109.67	106.92
4	A	1003	EPE	C2-C3-N4	2.22	115.20	110.64
3	A	1002	GIY	C08-C17-N13	2.20	117.47	112.71
5	A	1005	MES	O1S-S-C8	2.20	109.56	106.92
5	B	1003	MES	C6-C5-N4	-2.18	106.80	110.10
4	A	1003	EPE	O2S-S-C10	2.17	109.53	106.92
3	B	1002	GIY	C08-C17-N13	2.17	117.39	112.71
5	B	1004	MES	O1S-S-C8	2.11	109.45	106.92

Continued on next page...

Continued from previous page...

Mol	Chain	Res	Type	Atoms	Z	Observed(°)	Ideal(°)
5	A	1005	MES	O3S-S-C8	2.08	109.13	105.77
5	B	1003	MES	O2S-S-C8	2.04	109.37	106.92

There are no chirality outliers.

All (12) torsion outliers are listed below:

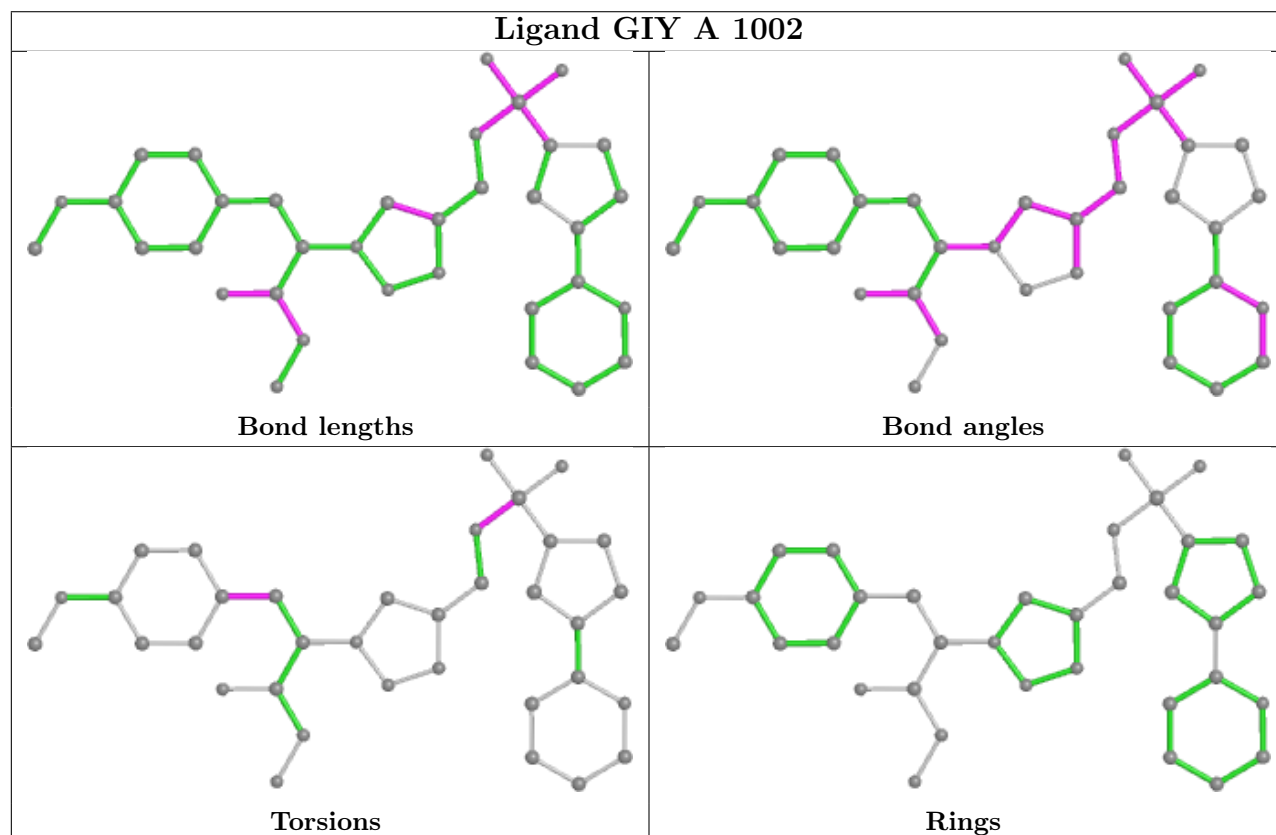
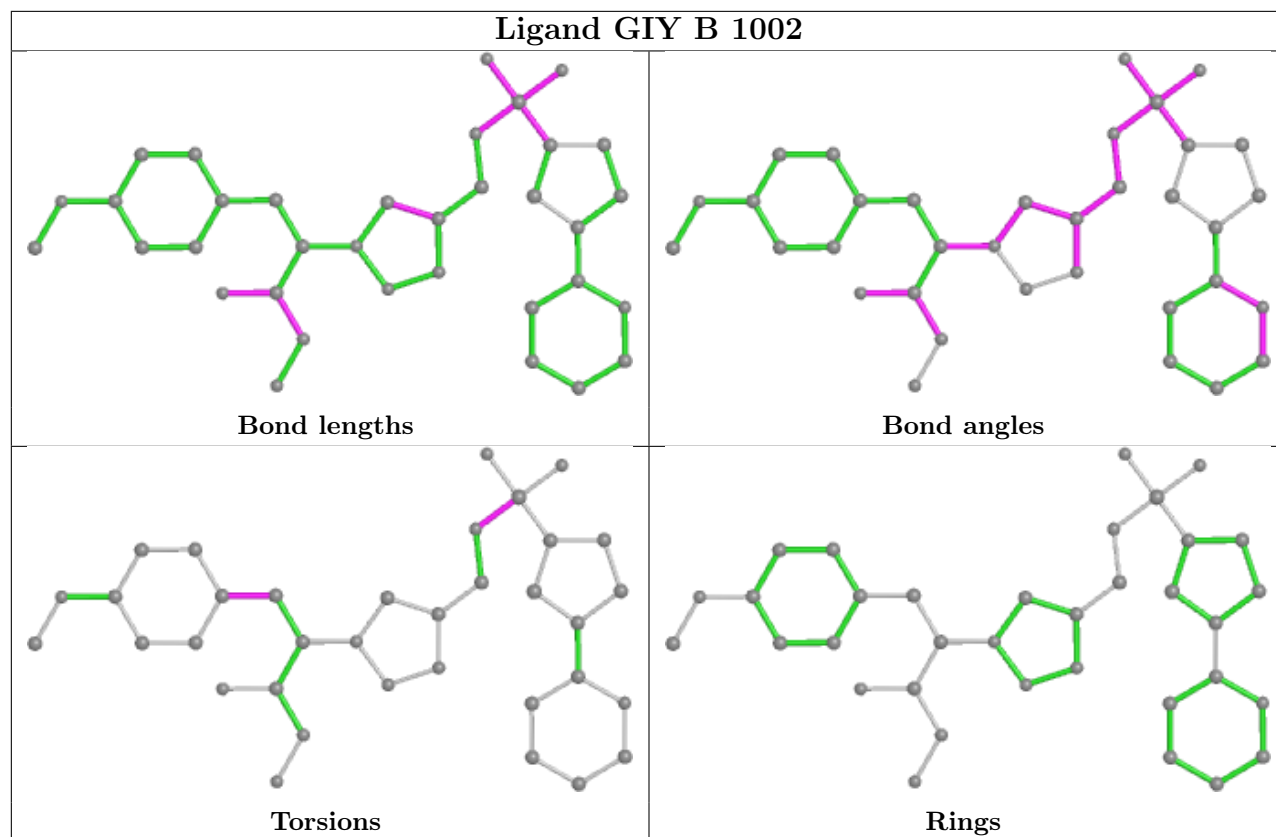
Mol	Chain	Res	Type	Atoms
4	A	1003	EPE	C9-C10-S-O1S
4	A	1003	EPE	C9-C10-S-O3S
4	A	1003	EPE	C10-C9-N1-C6
3	A	1002	GIY	C05-C19-C23-C26
3	B	1002	GIY	C05-C19-C23-C26
3	A	1002	GIY	C05-C19-C23-C27
3	B	1002	GIY	C05-C19-C23-C27
4	A	1003	EPE	C8-C7-N4-C5
4	A	1003	EPE	C9-C10-S-O2S
4	A	1003	EPE	C10-C9-N1-C2
3	B	1002	GIY	C17-N13-S01-O16
3	A	1002	GIY	C17-N13-S01-O16

There are no ring outliers.

3 monomers are involved in 11 short contacts:

Mol	Chain	Res	Type	Clashes	Symm-Clashes
5	A	1005	MES	4	0
5	A	1004	MES	4	0
5	B	1003	MES	3	0

The following is a two-dimensional graphical depiction of Mogul quality analysis of bond lengths, bond angles, torsion angles, and ring geometry for all instances of the Ligand of Interest. In addition, ligands with molecular weight > 250 and outliers as shown on the validation Tables will also be included. For torsion angles, if less than 5% of the Mogul distribution of torsion angles is within 10 degrees of the torsion angle in question, then that torsion angle is considered an outlier. Any bond that is central to one or more torsion angles identified as an outlier by Mogul will be highlighted in the graph. For rings, the root-mean-square deviation (RMSD) between the ring in question and similar rings identified by Mogul is calculated over all ring torsion angles. If the average RMSD is greater than 60 degrees and the minimal RMSD between the ring in question and any Mogul-identified rings is also greater than 60 degrees, then that ring is considered an outlier. The outliers are highlighted in purple. The color gray indicates Mogul did not find sufficient equivalents in the CSD to analyse the geometry.



5.7 Other polymers [i](#)

There are no such residues in this entry.

5.8 Polymer linkage issues [i](#)

There are no chain breaks in this entry.

6 Fit of model and data

6.1 Protein, DNA and RNA chains

In the following table, the column labelled ‘#RSRZ > 2’ contains the number (and percentage) of RSRZ outliers, followed by percent RSRZ outliers for the chain as percentile scores relative to all X-ray entries and entries of similar resolution. The OWAB column contains the minimum, median, 95th percentile and maximum values of the occupancy-weighted average B-factor per residue. The column labelled ‘Q < 0.9’ lists the number of (and percentage) of residues with an average occupancy less than 0.9.

Mol	Chain	Analysed	<RSRZ>	#RSRZ>2	OWAB(Å ²)	Q<0.9
1	A	896/967 (92%)	-0.50	3 (0%) 94 92	54, 100, 153, 205	0
1	B	841/967 (86%)	-0.12	25 (2%) 50 34	79, 150, 217, 261	0
All	All	1737/1934 (89%)	-0.32	28 (1%) 72 59	54, 120, 202, 261	0

All (28) RSRZ outliers are listed below:

Mol	Chain	Res	Type	RSRZ
1	B	571	PHE	6.0
1	B	580	LEU	5.3
1	B	64	TRP	4.8
1	B	594	THR	3.7
1	B	592	TYR	3.2
1	B	531	ASN	3.1
1	B	593	SER	2.9
1	B	598	ASN	2.9
1	B	574	ASP	2.9
1	B	579	ALA	2.8
1	B	72	VAL	2.8
1	B	691	THR	2.7
1	B	640	TRP	2.7
1	B	867	LYS	2.6
1	B	959	ASN	2.6
1	A	963	HIS	2.6
1	B	596	SER	2.5
1	B	597	SER	2.5
1	B	864	ARG	2.4
1	B	169	GLN	2.4
1	B	785	ASN	2.4
1	B	689	HIS	2.3
1	A	523	ASN	2.2
1	B	100	LEU	2.2

Continued on next page...

Continued from previous page...

Mol	Chain	Res	Type	RSRZ
1	A	638	HIS	2.2
1	B	832	LYS	2.1
1	B	569	GLY	2.0
1	B	118	THR	2.0

6.2 Non-standard residues in protein, DNA, RNA chains [i](#)

There are no non-standard protein/DNA/RNA residues in this entry.

6.3 Carbohydrates [i](#)

There are no monosaccharides in this entry.

6.4 Ligands [i](#)

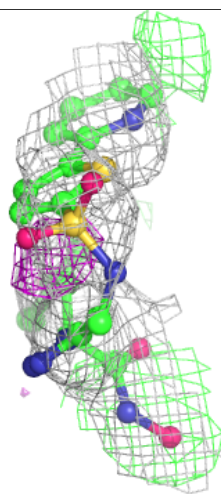
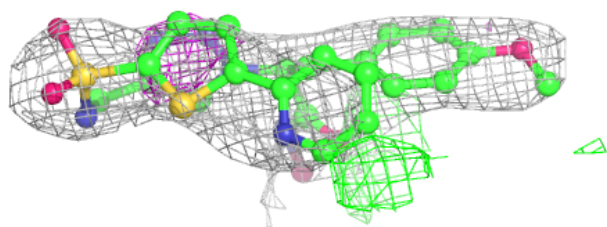
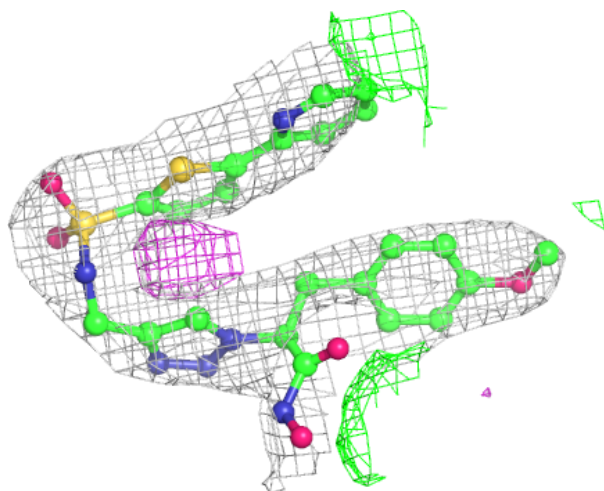
In the following table, the Atoms column lists the number of modelled atoms in the group and the number defined in the chemical component dictionary. The B-factors column lists the minimum, median, 95th percentile and maximum values of B factors of atoms in the group. The column labelled 'Q< 0.9' lists the number of atoms with occupancy less than 0.9.

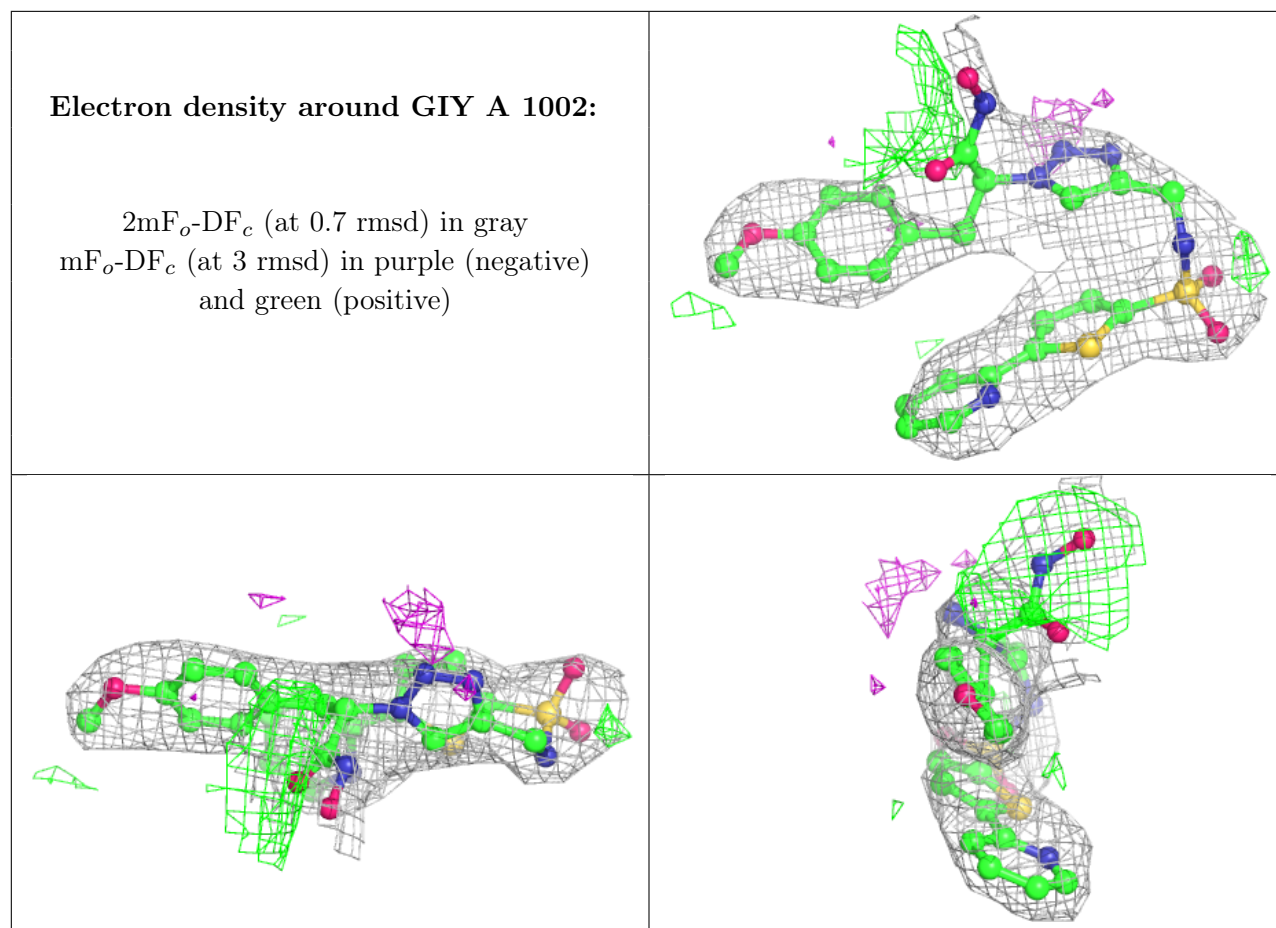
Mol	Type	Chain	Res	Atoms	RSCC	RSR	B-factors(Å ²)	Q<0.9
5	MES	A	1004	12/12	0.75	0.22	135,150,165,182	0
5	MES	B	1004	12/12	0.81	0.17	104,125,168,195	0
4	EPE	A	1003	15/15	0.84	0.14	101,118,169,172	0
5	MES	B	1003	12/12	0.85	0.21	125,145,166,193	0
5	MES	A	1005	12/12	0.86	0.15	106,130,169,194	0
3	GIY	B	1002	35/35	0.89	0.27	104,128,170,188	0
2	ZN	B	1001	1/1	0.90	0.16	114,114,114,114	0
6	NA	A	1006	1/1	0.94	0.17	77,77,77,77	0
3	GIY	A	1002	35/35	0.95	0.19	65,100,148,161	0
2	ZN	A	1001	1/1	0.96	0.19	72,72,72,72	0

The following is a graphical depiction of the model fit to experimental electron density of all instances of the Ligand of Interest. In addition, ligands with molecular weight > 250 and outliers as shown on the geometry validation Tables will also be included. Each fit is shown from different orientation to approximate a three-dimensional view.

Electron density around GIY B 1002:

$2mF_o-DF_c$ (at 0.7 rmsd) in gray
 mF_o-DF_c (at 3 rmsd) in purple (negative)
and green (positive)





6.5 Other polymers [i](#)

There are no such residues in this entry.