



Full wwPDB EM Validation Report ⓘ

Dec 26, 2022 – 04:14 PM JST

PDB ID : 7WGY
EMDB ID : EMD-32492
Title : SARS-CoV-2 spike glycoprotein trimer in Intermediate state
Authors : Zhu, Y.; Tai, L.; Yin, G.; Sun, F.
Deposited on : 2021-12-29
Resolution : 4.00 Å(reported)

This is a Full wwPDB EM Validation Report for a publicly released PDB entry.

We welcome your comments at validation@mail.wwpdb.org

A user guide is available at

<https://www.wwpdb.org/validation/2017/EMValidationReportHelp>

with specific help available everywhere you see the ⓘ symbol.

The types of validation reports are described at

<http://www.wwpdb.org/validation/2017/FAQs#types>.

The following versions of software and data (see [references ⓘ](#)) were used in the production of this report:

EMDB validation analysis : 0.0.1.dev43
Mogul : 1.8.5 (274361), CSD as541be (2020)
MolProbity : 4.02b-467
Percentile statistics : 20191225.v01 (using entries in the PDB archive December 25th 2019)
MapQ : 1.9.9
Ideal geometry (proteins) : Engh & Huber (2001)
Ideal geometry (DNA, RNA) : Parkinson et al. (1996)
Validation Pipeline (wwPDB-VP) : 2.31.3

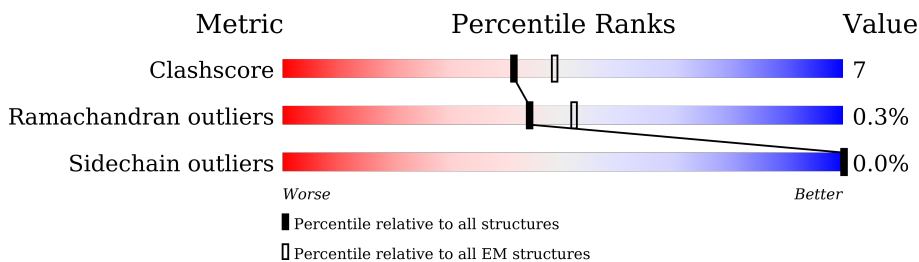
1 Overall quality at a glance i

The following experimental techniques were used to determine the structure:

ELECTRON MICROSCOPY

The reported resolution of this entry is 4.00 Å.

Percentile scores (ranging between 0-100) for global validation metrics of the entry are shown in the following graphic. The table shows the number of entries on which the scores are based.





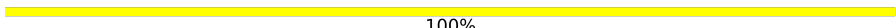
Metric	Whole archive (#Entries)	EM structures (#Entries)
Clashscore	158937	4297
Ramachandran outliers	154571	4023
Sidechain outliers	154315	3826

The table below summarises the geometric issues observed across the polymeric chains and their fit to the map. The red, orange, yellow and green segments of the bar indicate the fraction of residues that contain outliers for ≥ 3 , 2, 1 and 0 types of geometric quality criteria respectively. A grey segment represents the fraction of residues that are not modelled. The numeric value for each fraction is indicated below the corresponding segment, with a dot representing fractions $\leq 5\%$. The upper red bar (where present) indicates the fraction of residues that have poor fit to the EM map (all-atom inclusion $< 40\%$). The numeric value is given above the bar.

Mol	Chain	Length	Quality of chain
1	A	1204	<div style="display: flex; align-items: center;"> <div style="width: 9%; height: 10px; background-color: red; margin-right: 5px;"></div> <div style="width: 71%; height: 10px; background-color: green; margin-right: 5px;"></div> <div style="width: 15%; height: 10px; background-color: yellow; margin-right: 5px;"></div> <div style="width: 14%; height: 10px; background-color: grey;"></div> </div> <p style="text-align: center;">9% 71% 15% 14%</p>
1	B	1204	<div style="display: flex; align-items: center;"> <div style="width: 9%; height: 10px; background-color: red; margin-right: 5px;"></div> <div style="width: 55%; height: 10px; background-color: green; margin-right: 5px;"></div> <div style="width: 13%; height: 10px; background-color: yellow; margin-right: 5px;"></div> <div style="width: 32%; height: 10px; background-color: grey;"></div> </div> <p style="text-align: center;">9% 55% 13% 32%</p>
1	C	1204	<div style="display: flex; align-items: center;"> <div style="width: 11%; height: 10px; background-color: red; margin-right: 5px;"></div> <div style="width: 70%; height: 10px; background-color: green; margin-right: 5px;"></div> <div style="width: 15%; height: 10px; background-color: yellow; margin-right: 5px;"></div> <div style="width: 15%; height: 10px; background-color: grey;"></div> </div> <p style="text-align: center;">11% 70% 15% 15%</p>
2	D	2	<div style="width: 100%; height: 10px; background-color: orange;"></div> <p style="text-align: center;">100%</p>
2	E	2	<div style="display: flex; align-items: center;"> <div style="width: 50%; height: 10px; background-color: red; margin-right: 5px;"></div> <div style="width: 50%; height: 10px; background-color: orange;"></div> </div> <p style="text-align: center;">50% 50%</p>
2	F	2	<div style="display: flex; align-items: center;"> <div style="width: 50%; height: 10px; background-color: red; margin-right: 5px;"></div> <div style="width: 50%; height: 10px; background-color: yellow;"></div> </div> <p style="text-align: center;">50% 100%</p>
2	G	2	<div style="display: flex; align-items: center;"> <div style="width: 50%; height: 10px; background-color: red; margin-right: 5px;"></div> <div style="width: 50%; height: 10px; background-color: orange;"></div> </div> <p style="text-align: center;">50% 50%</p>
2	H	2	<div style="width: 100%; height: 10px; background-color: orange;"></div> <p style="text-align: center;">100%</p>

Continued on next page...

Continued from previous page...

Mol	Chain	Length	Quality of chain
2	I	2	 100%
2	J	2	 50% 100%
2	K	2	 100%

2 Entry composition [i](#)

There are 3 unique types of molecules in this entry. The entry contains 22914 atoms, of which 0 are hydrogens and 0 are deuteriums.

In the tables below, the AltConf column contains the number of residues with at least one atom in alternate conformation and the Trace column contains the number of residues modelled with at most 2 atoms.

- Molecule 1 is a protein called Spike glycoprotein.

Mol	Chain	Residues	Atoms					AltConf	Trace
			Total	C	N	O	S		
1	A	1033	8078	5160	1344	1537	37	0	0
1	B	821	6393	4083	1057	1225	28	0	0
1	C	1025	8009	5117	1331	1525	36	0	0

There are 42 discrepancies between the modelled and reference sequences:

Chain	Residue	Modelled	Actual	Comment	Reference
A	?	-	PRO	deletion	UNP P0DTC2
A	?	-	ARG	deletion	UNP P0DTC2
A	?	-	ARG	deletion	UNP P0DTC2
A	?	-	ALA	deletion	UNP P0DTC2
A	1212	GLY	-	expression tag	UNP P0DTC2
A	1213	SER	-	expression tag	UNP P0DTC2
A	1214	GLY	-	expression tag	UNP P0DTC2
A	1215	ARG	-	expression tag	UNP P0DTC2
A	1216	GLU	-	expression tag	UNP P0DTC2
A	1217	ASN	-	expression tag	UNP P0DTC2
A	1218	LEU	-	expression tag	UNP P0DTC2
A	1219	TYR	-	expression tag	UNP P0DTC2
A	1220	PHE	-	expression tag	UNP P0DTC2
A	1221	GLN	-	expression tag	UNP P0DTC2
B	?	-	PRO	deletion	UNP P0DTC2
B	?	-	ARG	deletion	UNP P0DTC2
B	?	-	ARG	deletion	UNP P0DTC2
B	?	-	ALA	deletion	UNP P0DTC2
B	1212	GLY	-	expression tag	UNP P0DTC2
B	1213	SER	-	expression tag	UNP P0DTC2
B	1214	GLY	-	expression tag	UNP P0DTC2
B	1215	ARG	-	expression tag	UNP P0DTC2
B	1216	GLU	-	expression tag	UNP P0DTC2
B	1217	ASN	-	expression tag	UNP P0DTC2

Continued on next page...

Continued from previous page...

Chain	Residue	Modelled	Actual	Comment	Reference
B	1218	LEU	-	expression tag	UNP P0DTC2
B	1219	TYR	-	expression tag	UNP P0DTC2
B	1220	PHE	-	expression tag	UNP P0DTC2
B	1221	GLN	-	expression tag	UNP P0DTC2
C	?	-	PRO	deletion	UNP P0DTC2
C	?	-	ARG	deletion	UNP P0DTC2
C	?	-	ARG	deletion	UNP P0DTC2
C	?	-	ALA	deletion	UNP P0DTC2
C	1212	GLY	-	expression tag	UNP P0DTC2
C	1213	SER	-	expression tag	UNP P0DTC2
C	1214	GLY	-	expression tag	UNP P0DTC2
C	1215	ARG	-	expression tag	UNP P0DTC2
C	1216	GLU	-	expression tag	UNP P0DTC2
C	1217	ASN	-	expression tag	UNP P0DTC2
C	1218	LEU	-	expression tag	UNP P0DTC2
C	1219	TYR	-	expression tag	UNP P0DTC2
C	1220	PHE	-	expression tag	UNP P0DTC2
C	1221	GLN	-	expression tag	UNP P0DTC2

- Molecule 2 is an oligosaccharide called 2-acetamido-2-deoxy-beta-D-glucopyranose-(1-4)-2-acetamido-2-deoxy-beta-D-glucopyranose.



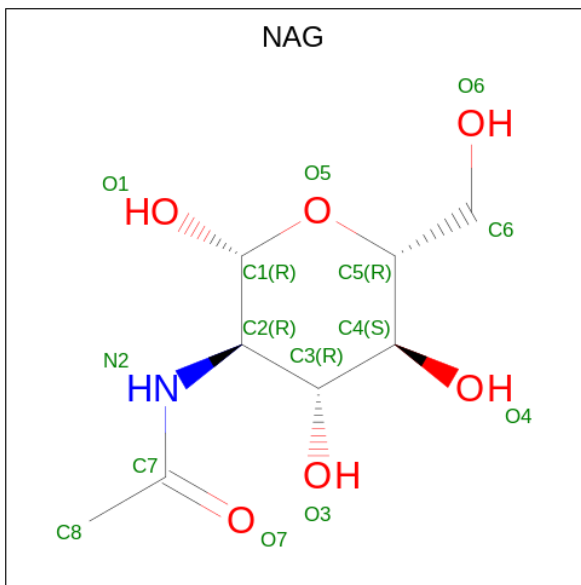
Mol	Chain	Residues	Atoms			AltConf	Trace	
			Total	C	N			O
2	D	2	28	16	2	10	0	0
2	E	2	28	16	2	10	0	0
2	F	2	28	16	2	10	0	0
2	G	2	28	16	2	10	0	0
2	H	2	28	16	2	10	0	0
2	I	2	28	16	2	10	0	0
2	J	2	28	16	2	10	0	0

Continued on next page...

Continued from previous page...

Mol	Chain	Residues	Atoms				AltConf	Trace
			Total	C	N	O		
2	K	2	28	16	2	10	0	0

- Molecule 3 is 2-acetamido-2-deoxy-beta-D-glucopyranose (three-letter code: NAG) (formula: $C_8H_{15}NO_6$).



Mol	Chain	Residues	Atoms				AltConf
			Total	C	N	O	
3	A	1	70	40	5	25	0
3	A	1	70	40	5	25	0
3	A	1	70	40	5	25	0
3	A	1	70	40	5	25	0
3	A	1	70	40	5	25	0
3	B	1	70	40	5	25	0
3	B	1	70	40	5	25	0
3	B	1	70	40	5	25	0
3	B	1	70	40	5	25	0
3	B	1	70	40	5	25	0

Continued on next page...

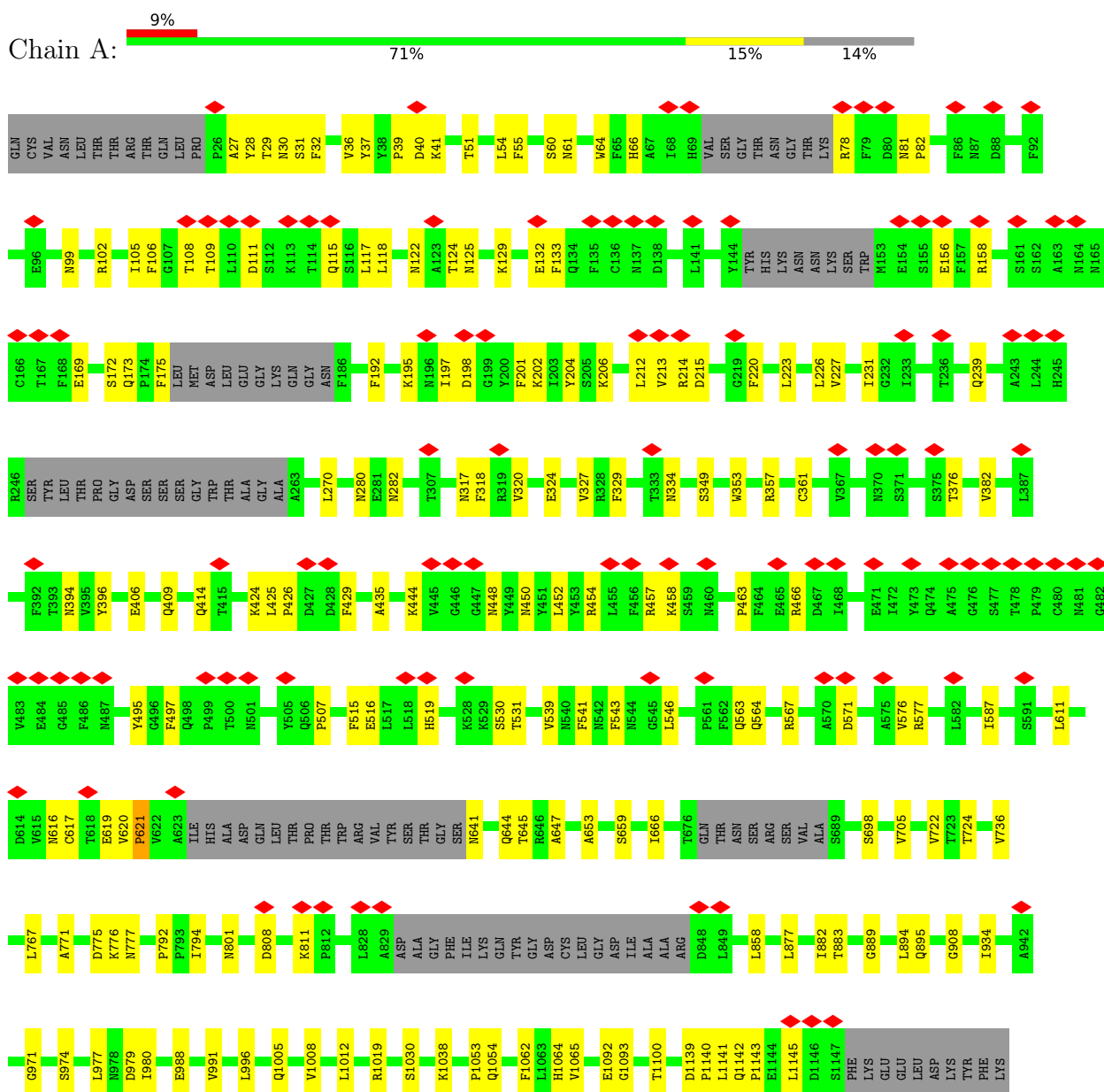
Continued from previous page...

Mol	Chain	Residues	Atoms				AltConf
			Total	C	N	O	
3	C	1	Total 70	40	5	25	0
3	C	1	Total 70	40	5	25	0
3	C	1	Total 70	40	5	25	0
3	C	1	Total 70	40	5	25	0
3	C	1	Total 70	40	5	25	0

3 Residue-property plots

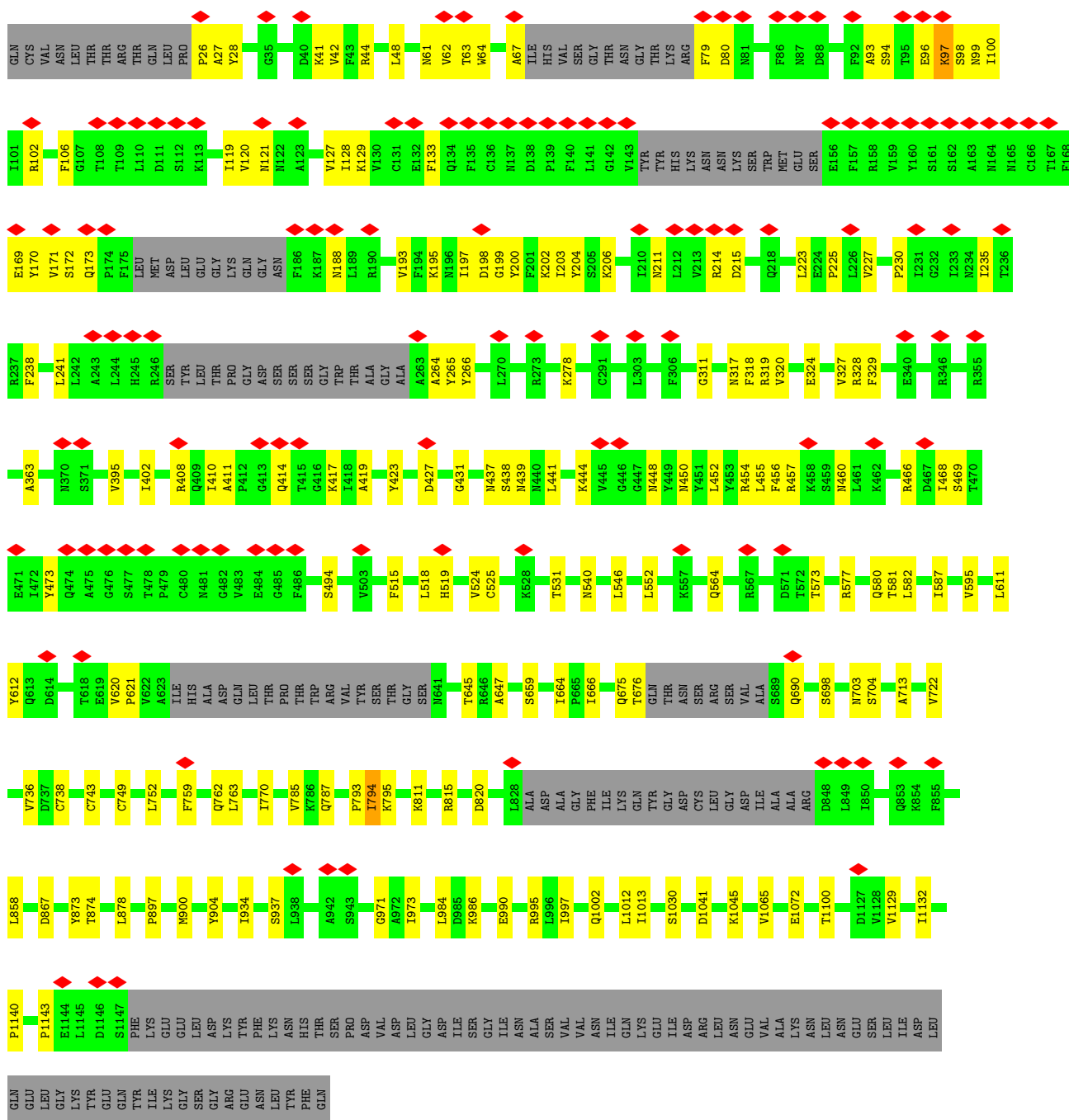
These plots are drawn for all protein, RNA, DNA and oligosaccharide chains in the entry. The first graphic for a chain summarises the proportions of the various outlier classes displayed in the second graphic. The second graphic shows the sequence view annotated by issues in geometry and atom inclusion in map density. Residues are color-coded according to the number of geometric quality criteria for which they contain at least one outlier: green = 0, yellow = 1, orange = 2 and red = 3 or more. A red diamond above a residue indicates a poor fit to the EM map for this residue (all-atom inclusion < 40%). Stretches of 2 or more consecutive residues without any outlier are shown as a green connector. Residues present in the sample, but not in the model, are shown in grey.

• Molecule 1: Spike glycoprotein



VAL	ALA	LYS	ASN	LEU	THR	ASN	GLU	SER	LEU	ILE	ASP	GLN	GLM	GLU	GLY	LYS	TYR	GLU	GLN	TYR	ILE	LYS	GLY	SER	GLY	ARG	ASN	LEU	PHE	GLN
-----	-----	-----	-----	-----	-----	-----	-----	-----	-----	-----	-----	-----	-----	-----	-----	-----	-----	-----	-----	-----	-----	-----	-----	-----	-----	-----	-----	-----	-----	-----

• Molecule 1: Spike glycoprotein



• Molecule 2: 2-acetamido-2-deoxy-beta-D-glucopyranose-(1-4)-2-acetamido-2-deoxy-beta-D-glucopyranose



MAG1
MAG2

- Molecule 2: 2-acetamido-2-deoxy-beta-D-glucopyranose-(1-4)-2-acetamido-2-deoxy-beta-D-glucopyranose

MAG1
MAG2

- Molecule 2: 2-acetamido-2-deoxy-beta-D-glucopyranose-(1-4)-2-acetamido-2-deoxy-beta-D-glucopyranose

MAG1
MAG2

- Molecule 2: 2-acetamido-2-deoxy-beta-D-glucopyranose-(1-4)-2-acetamido-2-deoxy-beta-D-glucopyranose

MAG1
MAG2

- Molecule 2: 2-acetamido-2-deoxy-beta-D-glucopyranose-(1-4)-2-acetamido-2-deoxy-beta-D-glucopyranose

MAG1
MAG2

- Molecule 2: 2-acetamido-2-deoxy-beta-D-glucopyranose-(1-4)-2-acetamido-2-deoxy-beta-D-glucopyranose

MAG1
MAG2

- Molecule 2: 2-acetamido-2-deoxy-beta-D-glucopyranose-(1-4)-2-acetamido-2-deoxy-beta-D-glucopyranose




MAG1
MAG2

- Molecule 2: 2-acetamido-2-deoxy-beta-D-glucofuranose-(1-4)-2-acetamido-2-deoxy-beta-D-glucopyranose

Chain K:

100%MAG1
MAG2

4 Experimental information

Property	Value	Source
EM reconstruction method	SINGLE PARTICLE	Depositor
Imposed symmetry	POINT, Not provided	
Number of particles used	21045	Depositor
Resolution determination method	FSC 0.143 CUT-OFF	Depositor
CTF correction method	PHASE FLIPPING AND AMPLITUDE CORRECTION	Depositor
Microscope	FEI TITAN KRIOS	Depositor
Voltage (kV)	300	Depositor
Electron dose ($e^-/\text{\AA}^2$)	80	Depositor
Minimum defocus (nm)	1000	Depositor
Maximum defocus (nm)	2500	Depositor
Magnification	Not provided	
Image detector	GATAN K2 QUANTUM (4k x 4k)	Depositor
Maximum map value	1.706	Depositor
Minimum map value	-0.696	Depositor
Average map value	0.003	Depositor
Map value standard deviation	0.072	Depositor
Recommended contour level	0.506	Depositor
Map size (Å)	345.6, 345.6, 345.6	wwPDB
Map dimensions	256, 256, 256	wwPDB
Map angles (°)	90.0, 90.0, 90.0	wwPDB
Pixel spacing (Å)	1.35, 1.35, 1.35	Depositor

5 Model quality [i](#)

5.1 Standard geometry [i](#)

Bond lengths and bond angles in the following residue types are not validated in this section: NAG

The Z score for a bond length (or angle) is the number of standard deviations the observed value is removed from the expected value. A bond length (or angle) with $|Z| > 5$ is considered an outlier worth inspection. RMSZ is the root-mean-square of all Z scores of the bond lengths (or angles).

Mol	Chain	Bond lengths		Bond angles	
		RMSZ	# Z >5	RMSZ	# Z >5
1	A	0.31	0/8260	0.51	0/11236
1	B	0.31	0/6525	0.51	0/8874
1	C	0.30	0/8189	0.50	0/11141
All	All	0.31	0/22974	0.51	0/31251

Chiral center outliers are detected by calculating the chiral volume of a chiral center and verifying if the center is modelled as a planar moiety or with the opposite hand. A planarity outlier is detected by checking planarity of atoms in a peptide group, atoms in a mainchain group or atoms of a sidechain that are expected to be planar.

Mol	Chain	#Chirality outliers	#Planarity outliers
1	C	0	1

There are no bond length outliers.

There are no bond angle outliers.

There are no chirality outliers.

All (1) planarity outliers are listed below:

Mol	Chain	Res	Type	Group
1	C	620	VAL	Peptide

5.2 Too-close contacts [i](#)

In the following table, the Non-H and H(model) columns list the number of non-hydrogen atoms and hydrogen atoms in the chain respectively. The H(added) column lists the number of hydrogen atoms added and optimized by MolProbity. The Clashes column lists the number of clashes within the asymmetric unit, whereas Symm-Clashes lists symmetry-related clashes.

Mol	Chain	Non-H	H(model)	H(added)	Clashes	Symm-Clashes
1	A	8078	0	7912	114	0
1	B	6393	0	6299	102	0
1	C	8009	0	7848	129	0
2	D	28	0	25	1	0
2	E	28	0	25	2	0
2	F	28	0	25	0	0
2	G	28	0	25	1	0
2	H	28	0	25	1	0
2	I	28	0	25	1	0
2	J	28	0	25	0	0
2	K	28	0	25	0	0
3	A	70	0	65	2	0
3	B	70	0	65	2	0
3	C	70	0	63	1	0
All	All	22914	0	22452	334	0

The all-atom clashscore is defined as the number of clashes found per 1000 atoms (including hydrogen atoms). The all-atom clashscore for this structure is 7.

All (334) close contacts within the same asymmetric unit are listed below, sorted by their clash magnitude.

Atom-1	Atom-2	Interatomic distance (Å)	Clash overlap (Å)
1:B:54:LEU:HB2	1:B:195:LYS:HZ2	1.41	0.84
1:A:1012:LEU:HD21	1:C:1013:ILE:HG21	1.64	0.79
1:A:659:SER:HB3	1:A:698:SER:HB2	1.65	0.78
1:B:1053:PRO:O	1:B:1054:GLN:NE2	2.16	0.77
1:C:206:LYS:HB2	1:C:223:LEU:HG	1.66	0.76
1:B:1093:GLY:HA3	1:B:1105:THR:O	1.85	0.75
1:B:81:ASN:O	1:B:239:GLN:NE2	2.22	0.73
1:B:193:VAL:HG12	1:B:204:TYR:HB2	1.71	0.72
1:C:64:TRP:HE1	1:C:264:ALA:HB1	1.55	0.72
1:A:1053:PRO:O	1:A:1054:GLN:NE2	2.23	0.71
1:A:1100:THR:HG21	3:A:1303:NAG:HN2	1.55	0.71
1:B:620:VAL:O	1:B:622:VAL:N	2.23	0.70
1:C:214:ARG:HG3	1:C:215:ASP:H	1.55	0.70
1:A:801:ASN:ND2	2:E:1:NAG:O5	2.24	0.70
1:A:37:TYR:OH	1:A:54:LEU:O	2.10	0.69
1:A:775:ASP:OD1	1:A:776:LYS:N	2.25	0.69
1:B:37:TYR:HB3	1:B:223:LEU:HB3	1.75	0.69
1:B:560:LEU:HB2	1:B:563:GLN:HG3	1.73	0.69
1:B:763:LEU:HD12	1:B:1008:VAL:HG21	1.75	0.68
1:C:752:LEU:HD11	1:C:990:GLU:HG3	1.76	0.68

Continued on next page...

Continued from previous page...

Atom-1	Atom-2	Interatomic distance (Å)	Clash overlap (Å)
1:A:889:GLY:O	1:C:1045:LYS:NZ	2.21	0.68
1:C:934:ILE:O	1:C:937:SER:HB3	1.94	0.66
1:A:324:GLU:HB3	1:A:539:VAL:HG12	1.78	0.66
1:C:738:CYS:HB2	1:C:763:LEU:HD11	1.77	0.65
1:C:454:ARG:NH2	1:C:469:SER:O	2.27	0.65
1:A:317:ASN:OD1	1:A:318:PHE:N	2.30	0.64
1:B:908:GLY:O	1:B:1038:LYS:NZ	2.30	0.64
1:A:66:HIS:HB2	1:A:78:ARG:HB3	1.79	0.64
1:C:67:ALA:HA	1:C:79:PHE:HA	1.79	0.63
1:B:1091:ARG:NH2	1:B:1118:ASP:O	2.23	0.63
1:C:759:PHE:HA	1:C:762:GLN:HE22	1.64	0.63
1:C:204:TYR:CD1	1:C:225:PRO:HA	2.35	0.62
1:A:908:GLY:O	1:A:1038:LYS:NZ	2.32	0.62
1:B:641:ASN:N	1:B:653:ALA:O	2.33	0.61
1:A:1005:GLN:OE1	1:C:1002:GLN:NE2	2.34	0.61
1:C:444:LYS:HE2	1:C:448:ASN:HA	1.82	0.61
1:A:777:ASN:OD1	1:A:1019:ARG:NH1	2.32	0.60
1:C:1100:THR:HG21	3:C:1303:NAG:HN2	1.66	0.60
1:B:827:THR:O	1:B:949:GLN:NE2	2.35	0.59
1:A:115:GLN:HA	1:A:132:GLU:HA	1.84	0.59
1:A:39:PRO:HG3	1:A:51:THR:HG21	1.85	0.59
1:C:96:GLU:OE2	1:C:100:ILE:N	2.34	0.59
1:C:127:VAL:HG22	1:C:171:VAL:HG12	1.84	0.59
1:B:1142:GLN:HA	1:B:1145:LEU:HD23	1.84	0.59
1:C:811:LYS:NZ	1:C:820:ASP:OD2	2.36	0.59
1:C:97:LYS:O	1:C:188:ASN:ND2	2.36	0.58
1:C:203:ILE:HB	1:C:227:VAL:HB	1.86	0.58
1:C:97:LYS:HE3	1:C:100:ILE:HD11	1.84	0.58
1:A:424:LYS:HB3	1:A:463:PRO:HA	1.86	0.58
1:B:662:CYS:HB2	1:B:697:MET:SD	2.44	0.57
1:C:193:VAL:HG23	1:C:223:LEU:HD22	1.87	0.57
1:B:302:THR:O	1:B:304:LYS:NZ	2.25	0.57
1:A:576:VAL:HB	1:A:587:ILE:HD11	1.86	0.57
1:A:195:LYS:HE2	1:A:202:LYS:HD2	1.87	0.57
1:B:785:VAL:HG22	1:B:787:GLN:H	1.69	0.57
1:B:52:GLN:OE1	1:B:274:THR:OG1	2.21	0.57
1:A:641:ASN:N	1:A:653:ALA:O	2.38	0.56
1:C:99:ASN:O	1:C:102:ARG:NH2	2.27	0.56
1:B:746:SER:HB2	1:B:981:LEU:HD11	1.87	0.56
1:C:193:VAL:HB	1:C:204:TYR:HB2	1.88	0.56
1:C:736:VAL:HG22	1:C:858:LEU:HD13	1.88	0.56

Continued on next page...

Continued from previous page...

Atom-1	Atom-2	Interatomic distance (Å)	Clash overlap (Å)
1:C:417:LYS:HZ1	1:C:455:LEU:HA	1.70	0.56
1:C:546:LEU:HD21	1:C:573:THR:HG21	1.88	0.56
1:C:897:PRO:HB2	1:C:900:MET:HG2	1.87	0.56
1:A:327:VAL:O	1:A:531:THR:N	2.39	0.55
1:A:567:ARG:NH1	1:A:571:ASP:O	2.39	0.55
1:B:213:VAL:HG13	1:B:214:ARG:H	1.71	0.55
1:C:129:LYS:HG2	1:C:169:GLU:HA	1.87	0.55
1:A:156:GLU:OE2	1:A:158:ARG:NE	2.40	0.55
1:A:394:ASN:O	1:A:515:PHE:HA	2.06	0.55
1:B:984:LEU:HD13	1:B:988:GLU:HB3	1.89	0.54
1:B:100:ILE:HG23	1:B:243:ALA:HB3	1.89	0.54
1:C:42:VAL:HB	1:C:44:ARG:HH12	1.71	0.54
1:C:437:ASN:OD1	1:C:439:ASN:N	2.38	0.54
1:C:815:ARG:NH2	1:C:867:ASP:OD2	2.35	0.54
1:A:109:THR:OG1	1:A:111:ASP:OD1	2.21	0.54
1:C:93:ALA:HB3	1:C:266:TYR:HB2	1.88	0.54
1:B:620:VAL:C	1:B:622:VAL:H	2.10	0.54
1:A:454:ARG:HD3	1:A:457:ARG:HB2	1.90	0.54
1:A:30:ASN:HB2	1:A:32:PHE:CE1	2.43	0.54
1:B:99:ASN:O	1:B:102:ARG:NE	2.36	0.53
1:C:317:ASN:O	1:C:319:ARG:NH1	2.42	0.53
1:C:722:VAL:HG22	1:C:1065:VAL:HG22	1.91	0.53
1:C:324:GLU:O	1:C:540:ASN:ND2	2.42	0.53
1:A:108:THR:HG23	1:A:109:THR:HG23	1.90	0.53
1:A:353:TRP:O	1:A:466:ARG:NH1	2.42	0.53
1:B:994:ASP:OD1	1:B:995:ARG:N	2.41	0.53
1:A:376:THR:HB	1:A:435:ALA:HB3	1.91	0.53
1:A:971:GLY:N	1:B:755:GLN:OE1	2.42	0.53
1:B:105:ILE:HG22	1:B:110:LEU:HD22	1.89	0.53
1:A:563:GLN:O	1:A:577:ARG:NH2	2.38	0.53
1:B:619:GLU:C	1:B:621:PRO:HD2	2.30	0.53
1:A:894:LEU:HD22	1:C:1072:GLU:HG2	1.90	0.53
1:B:726:ILE:HG12	1:B:1061:VAL:HG22	1.90	0.53
1:C:311:GLY:HA2	1:C:664:ILE:HD12	1.90	0.52
1:C:564:GLN:NE2	1:C:577:ARG:O	2.42	0.52
1:A:988:GLU:O	1:A:991:VAL:HG22	2.10	0.52
1:C:456:PHE:HB3	1:C:473:TYR:CG	2.44	0.52
1:C:452:LEU:HD23	1:C:494:SER:HA	1.91	0.52
1:A:882:ILE:HG23	1:A:883:THR:HG23	1.91	0.52
1:A:81:ASN:O	1:A:239:GLN:NE2	2.31	0.51
1:A:425:LEU:HD12	1:A:426:PRO:HD2	1.92	0.51

Continued on next page...

Continued from previous page...

Atom-1	Atom-2	Interatomic distance (Å)	Clash overlap (Å)
1:A:226:LEU:HG	1:A:227:VAL:HG23	1.92	0.51
1:A:201:PHE:CD2	1:A:231:ILE:HD11	2.46	0.51
1:C:793:PRO:O	1:C:794:ILE:HG22	2.10	0.51
1:B:568:ASP:N	1:B:572:THR:O	2.31	0.51
1:C:577:ARG:HH11	1:C:582:LEU:HB2	1.76	0.51
1:A:129:LYS:NZ	1:A:169:GLU:OE1	2.43	0.51
1:B:562:PHE:HB2	1:C:41:LYS:HD3	1.92	0.51
1:A:334:ASN:HB2	1:A:361:CYS:HA	1.93	0.51
1:C:327:VAL:O	1:C:531:THR:N	2.44	0.51
1:B:948:LEU:O	1:B:951:VAL:HB	2.10	0.50
1:A:767:LEU:HD21	1:A:1008:VAL:HG22	1.92	0.50
1:B:866:THR:H	1:B:869:MET:HE3	1.76	0.50
1:B:986:LYS:NZ	1:B:990:GLU:OE2	2.41	0.50
1:C:62:VAL:HG22	1:C:63:THR:H	1.76	0.50
1:C:417:LYS:NZ	1:C:455:LEU:HA	2.26	0.50
1:C:195:LYS:HG3	1:C:202:LYS:HE2	1.92	0.50
1:C:448:ASN:OD1	1:C:450:ASN:ND2	2.41	0.50
1:C:676:THR:HA	1:C:690:GLN:HA	1.93	0.50
1:B:130:VAL:O	1:B:167:THR:OG1	2.25	0.50
1:B:194:PHE:HB3	1:B:201:PHE:CE1	2.47	0.50
1:B:96:GLU:OE2	1:B:98:SER:N	2.45	0.50
1:B:212:LEU:HD11	1:B:215:ASP:O	2.11	0.50
1:A:206:LYS:HB2	1:A:223:LEU:HD13	1.94	0.49
1:B:34:ARG:NH1	1:B:220:PHE:O	2.45	0.49
1:B:92:PHE:CE1	1:B:265:TYR:HB2	2.47	0.49
1:A:213:VAL:HG22	1:A:214:ARG:HG3	1.94	0.49
1:A:724:THR:HA	1:A:1062:PHE:O	2.12	0.49
1:C:438:SER:HB2	1:C:441:LEU:HB2	1.94	0.49
1:C:785:VAL:HG22	1:C:787:GLN:H	1.78	0.49
1:A:99:ASN:O	1:A:102:ARG:NE	2.39	0.49
1:A:1092:GLU:OE2	1:A:1093:GLY:N	2.46	0.49
1:C:411:ALA:HB3	1:C:414:GLN:HE22	1.78	0.49
1:B:34:ARG:O	1:B:56:LEU:HD23	2.12	0.49
1:B:703:ASN:OD1	1:B:704:SER:N	2.45	0.49
1:A:36:VAL:HB	1:A:220:PHE:CZ	2.48	0.48
1:B:328:ARG:NH1	1:B:531:THR:O	2.45	0.48
1:B:620:VAL:N	1:B:621:PRO:HD2	2.28	0.48
1:B:1134:ASN:OD1	3:B:1304:NAG:N2	2.47	0.48
1:C:197:ILE:O	1:C:199:GLY:N	2.46	0.48
1:C:518:LEU:O	1:C:519:HIS:ND1	2.46	0.48
1:A:406:GLU:OE1	1:A:495:TYR:OH	2.23	0.48

Continued on next page...

Continued from previous page...

Atom-1	Atom-2	Interatomic distance (Å)	Clash overlap (Å)
1:B:950:ASP:OD1	1:B:951:VAL:N	2.47	0.48
1:C:749:CYS:SG	1:C:997:ILE:HD11	2.53	0.48
1:A:564:GLN:NE2	1:A:577:ARG:HB3	2.29	0.48
1:B:310:LYS:HG3	1:B:664:ILE:HD11	1.95	0.48
1:C:26:PRO:HA	1:C:64:TRP:O	2.13	0.48
1:C:427:ASP:OD1	1:C:427:ASP:N	2.45	0.48
2:D:1:NAG:H61	2:D:2:NAG:N2	2.28	0.48
1:B:35:GLY:HA3	1:B:56:LEU:HB3	1.95	0.48
1:A:124:THR:O	1:A:175:PHE:N	2.47	0.48
1:A:329:PHE:HB3	1:A:530:SER:HB3	1.95	0.48
1:C:703:ASN:OD1	1:C:704:SER:N	2.47	0.48
1:A:767:LEU:O	1:A:771:ALA:N	2.43	0.48
1:A:979:ASP:OD1	1:A:979:ASP:N	2.47	0.48
1:B:226:LEU:HG	1:B:227:VAL:HG23	1.95	0.48
1:C:64:TRP:HD1	1:C:265:TYR:O	1.97	0.48
1:A:564:GLN:HE22	1:A:577:ARG:HB3	1.78	0.47
1:C:106:PHE:CE2	1:C:238:PHE:HB2	2.49	0.47
1:C:329:PHE:O	1:C:580:GLN:NE2	2.43	0.47
1:B:644:GLN:NE2	1:B:648:GLY:O	2.47	0.47
1:C:106:PHE:HB3	1:C:235:ILE:HD13	1.96	0.47
1:B:567:ARG:HA	1:B:573:THR:HA	1.96	0.47
1:A:516:GLU:OE2	1:A:519:HIS:ND1	2.47	0.47
1:B:93:ALA:HB1	1:B:189:LEU:HD11	1.95	0.47
1:A:122:ASN:OD1	1:A:125:ASN:N	2.43	0.47
1:B:27:ALA:HB3	1:B:64:TRP:HB3	1.97	0.47
1:C:97:LYS:HD2	1:C:98:SER:N	2.30	0.47
1:A:448:ASN:OD1	1:A:450:ASN:ND2	2.47	0.46
1:A:1141:LEU:HG	1:A:1145:LEU:HD23	1.95	0.46
1:B:988:GLU:HA	1:B:991:VAL:HG12	1.96	0.46
1:C:611:LEU:HD22	1:C:666:ILE:HG23	1.97	0.46
1:B:567:ARG:NH1	1:B:571:ASP:O	2.48	0.46
1:A:280:ASN:HB3	1:A:282:ASN:O	2.14	0.46
1:B:213:VAL:HG13	1:B:214:ARG:N	2.29	0.46
1:B:557:LYS:NZ	1:B:574:ASP:OD2	2.46	0.46
1:C:329:PHE:CE2	1:C:525:CYS:HB3	2.51	0.46
1:A:617:CYS:N	1:A:644:GLN:OE1	2.46	0.46
1:C:329:PHE:HE2	1:C:525:CYS:HB3	1.81	0.46
1:C:794:ILE:C	1:C:795:LYS:HD2	2.36	0.46
1:C:102:ARG:N	1:C:241:LEU:O	2.48	0.46
2:H:1:NAG:O6	2:H:2:NAG:N2	2.49	0.46
1:A:1100:THR:HG21	3:A:1303:NAG:N2	2.27	0.46

Continued on next page...

Continued from previous page...

Atom-1	Atom-2	Interatomic distance (Å)	Clash overlap (Å)
1:B:64:TRP:HZ2	1:B:214:ARG:HG2	1.81	0.46
1:B:231:ILE:HG13	1:B:232:GLY:N	2.31	0.46
1:C:94:SER:OG	1:C:96:GLU:OE1	2.26	0.46
1:A:382:VAL:HG11	1:A:515:PHE:HZ	1.80	0.45
1:B:190:ARG:HB3	1:B:192:PHE:HE1	1.81	0.45
1:A:106:PHE:HB2	1:A:117:LEU:HB3	1.98	0.45
1:A:212:LEU:HD13	1:A:215:ASP:H	1.81	0.45
1:A:974:SER:HB3	1:A:980:ILE:HG13	1.97	0.45
1:C:106:PHE:HB3	1:C:235:ILE:HG21	1.99	0.45
1:B:37:TYR:CB	1:B:223:LEU:HB3	2.44	0.45
1:A:1030:SER:OG	1:C:1041:ASP:HB3	2.16	0.45
1:A:31:SER:OG	1:A:60:SER:N	2.49	0.45
1:A:541:PHE:HB2	1:A:543:PHE:HE1	1.82	0.45
1:B:326:ILE:N	1:B:540:ASN:O	2.49	0.45
1:C:64:TRP:CD1	1:C:266:TYR:CD1	3.04	0.45
1:C:120:VAL:HG22	1:C:121:ASN:H	1.81	0.45
1:A:563:GLN:HA	1:B:41:LYS:HB3	1.98	0.45
1:A:895:GLN:NE2	1:C:713:ALA:HB2	2.32	0.45
1:C:317:ASN:OD1	1:C:318:PHE:N	2.50	0.45
1:A:192:PHE:HA	1:A:204:TYR:O	2.16	0.45
1:C:129:LYS:HE2	1:C:133:PHE:HZ	1.81	0.45
1:C:328:ARG:NH2	1:C:580:GLN:OE1	2.50	0.45
1:B:31:SER:OG	1:B:60:SER:N	2.50	0.44
1:C:214:ARG:HG3	1:C:215:ASP:N	2.27	0.44
1:C:675:GLN:O	1:C:690:GLN:HA	2.17	0.44
1:C:1140:PRO:O	1:C:1143:PRO:HD2	2.17	0.44
1:A:122:ASN:HD22	2:G:1:NAG:HN2	1.65	0.44
1:A:620:VAL:N	1:A:621:PRO:HD2	2.32	0.44
1:B:936:ASP:HA	1:B:939:SER:HB3	2.00	0.44
1:A:543:PHE:O	1:A:546:LEU:HB3	2.17	0.44
1:C:363:ALA:HB2	1:C:524:VAL:HG12	2.00	0.44
1:C:874:THR:O	1:C:878:LEU:HD23	2.17	0.44
1:A:81:ASN:N	1:A:82:PRO:HD3	2.33	0.44
1:C:198:ASP:OD1	1:C:198:ASP:N	2.50	0.44
1:C:200:TYR:HA	1:C:230:PRO:HA	1.98	0.44
1:C:402:ILE:HD13	1:C:410:ILE:HD13	1.99	0.44
1:A:444:LYS:HG2	1:A:448:ASN:HB2	1.99	0.44
1:B:130:VAL:HB	1:B:168:PHE:HB3	1.98	0.44
1:B:1003:SER:HG	1:C:759:PHE:HZ	1.65	0.44
1:C:27:ALA:HB3	1:C:64:TRP:CE3	2.52	0.44
1:C:64:TRP:NE1	1:C:264:ALA:HB1	2.27	0.44

Continued on next page...

Continued from previous page...

Atom-1	Atom-2	Interatomic distance (Å)	Clash overlap (Å)
1:C:419:ALA:HA	1:C:423:TYR:O	2.17	0.44
1:C:1129:VAL:HG11	1:C:1132:ILE:HD12	1.99	0.44
1:A:1142:GLN:HA	1:A:1145:LEU:HG	1.99	0.44
1:C:119:ILE:HG23	1:C:128:ILE:HG13	2.00	0.44
1:C:172:SER:OG	1:C:173:GLN:OE1	2.36	0.44
1:A:357:ARG:HD3	1:A:396:TYR:CZ	2.53	0.44
1:B:100:ILE:O	1:B:102:ARG:HG2	2.16	0.44
1:B:205:SER:O	1:B:224:GLU:HB2	2.18	0.44
1:C:431:GLY:HA2	1:C:515:PHE:CE2	2.52	0.44
1:A:801:ASN:HD21	2:E:1:NAG:C1	2.30	0.44
1:B:969:ASN:OD1	1:B:975:SER:HB3	2.18	0.44
1:B:304:LYS:HE2	1:B:304:LYS:HB2	1.80	0.43
1:B:746:SER:OG	1:B:746:SER:O	2.36	0.43
1:C:28:TYR:HB3	1:C:61:ASN:OD1	2.18	0.43
1:C:408:ARG:O	1:C:414:GLN:NE2	2.51	0.43
1:A:349:SER:HB3	1:A:452:LEU:O	2.18	0.43
1:A:156:GLU:HG3	1:A:158:ARG:HG2	2.00	0.43
1:B:568:ASP:OD2	1:B:574:ASP:HB3	2.18	0.43
1:B:906:PHE:CD2	1:B:916:LEU:HB2	2.54	0.43
1:B:1093:GLY:CA	1:B:1105:THR:O	2.62	0.43
1:A:409:GLN:HA	1:A:414:GLN:HG2	2.01	0.43
1:A:1140:PRO:O	1:A:1143:PRO:HD2	2.19	0.43
1:C:42:VAL:O	1:C:44:ARG:NH1	2.51	0.43
1:A:736:VAL:HG22	1:A:858:LEU:HD13	1.99	0.43
1:C:214:ARG:CG	1:C:215:ASP:H	2.29	0.43
1:C:395:VAL:HG21	1:C:524:VAL:HG21	2.00	0.43
1:A:426:PRO:HG2	1:A:429:PHE:HB2	2.00	0.43
1:A:792:PRO:HG3	1:A:883:THR:HG21	2.00	0.43
1:B:676:THR:HA	1:B:690:GLN:HA	2.01	0.43
1:C:411:ALA:HB3	1:C:414:GLN:NE2	2.34	0.43
1:C:206:LYS:HD2	1:C:206:LYS:HA	1.82	0.43
1:B:37:TYR:HB3	1:B:223:LEU:HD23	2.00	0.43
1:B:96:GLU:OE2	1:B:100:ILE:HG12	2.18	0.43
1:C:27:ALA:HB3	1:C:64:TRP:HE3	1.83	0.43
1:A:497:PHE:CE2	1:A:507:PRO:HB3	2.53	0.42
1:B:1093:GLY:O	1:C:904:TYR:OH	2.37	0.42
1:B:122:ASN:OD1	1:B:125:ASN:N	2.49	0.42
1:B:699:LEU:HD22	1:C:873:TYR:CZ	2.54	0.42
1:C:457:ARG:NH2	1:C:460:ASN:O	2.43	0.42
1:C:986:LYS:HA	1:C:986:LYS:HD3	1.81	0.42
1:A:877:LEU:HD23	1:A:877:LEU:HA	1.82	0.42

Continued on next page...

Continued from previous page...

Atom-1	Atom-2	Interatomic distance (Å)	Clash overlap (Å)
1:C:659:SER:HB3	1:C:698:SER:HB2	2.01	0.42
1:C:743:CYS:HA	1:C:749:CYS:SG	2.59	0.42
1:A:172:SER:OG	1:A:173:GLN:N	2.53	0.42
1:A:645:THR:HG23	1:A:647:ALA:H	1.84	0.42
1:B:105:ILE:HG13	1:B:241:LEU:HD11	2.01	0.42
1:B:129:LYS:HE2	1:B:133:PHE:HZ	1.83	0.42
1:C:759:PHE:HD1	1:C:762:GLN:HE22	1.67	0.42
2:I:1:NAG:O6	2:I:2:NAG:H2	2.18	0.42
1:A:27:ALA:HB3	1:A:64:TRP:O	2.20	0.42
1:B:53:ASP:OD1	1:B:54:LEU:N	2.45	0.42
1:A:105:ILE:HD11	1:A:118:LEU:HD13	2.02	0.42
1:B:277:LEU:HD13	1:B:288:ALA:HB2	2.02	0.42
1:C:170:TYR:CE2	1:C:172:SER:HB2	2.55	0.42
1:C:759:PHE:HA	1:C:762:GLN:NE2	2.34	0.42
1:A:29:THR:HG22	1:A:30:ASN:N	2.35	0.42
1:A:616:ASN:HB2	1:A:619:GLU:OE1	2.19	0.42
1:B:759:PHE:O	1:B:763:LEU:HD23	2.20	0.42
1:A:28:TYR:HB3	1:A:61:ASN:OD1	2.19	0.42
1:B:564:GLN:NE2	1:B:577:ARG:O	2.48	0.42
1:C:64:TRP:CD1	1:C:266:TYR:HD1	2.37	0.42
1:C:172:SER:HG	1:C:173:GLN:H	1.68	0.41
1:C:202:LYS:HE2	1:C:202:LYS:HB2	1.87	0.41
1:B:53:ASP:HB3	1:B:55:PHE:CE2	2.55	0.41
1:B:740:MET:SD	1:B:857:GLY:HA3	2.60	0.41
1:C:971:GLY:C	1:C:995:ARG:HH21	2.24	0.41
1:C:973:ILE:HD11	1:C:984:LEU:HD21	2.02	0.41
1:A:197:ILE:HG22	1:A:198:ASP:OD1	2.21	0.41
1:A:977:LEU:HD21	1:A:996:LEU:HD23	2.01	0.41
1:B:1030:SER:O	1:B:1034:LEU:HB2	2.21	0.41
1:B:1101:HIS:CE1	3:B:1303:NAG:H3	2.55	0.41
1:C:417:LYS:HZ1	1:C:455:LEU:HD12	1.86	0.41
1:B:208:THR:HG23	1:B:210:ILE:HG12	2.02	0.41
1:C:552:LEU:HD22	1:C:587:ILE:HG12	2.03	0.41
1:C:645:THR:HG23	1:C:647:ALA:H	1.85	0.41
1:C:770:ILE:HD11	1:C:1012:LEU:HD23	2.01	0.41
1:A:40:ASP:OD1	1:A:41:LYS:N	2.45	0.41
1:A:1139:ASP:HB3	1:A:1142:GLN:HG2	2.03	0.41
1:B:204:TYR:CD1	1:B:225:PRO:HA	2.55	0.41
1:B:817:PHE:O	1:B:821:LEU:HG	2.21	0.41
1:C:188:ASN:HA	1:C:211:ASN:HD22	1.85	0.41
1:A:705:VAL:HG12	1:B:895:GLN:HB3	2.02	0.41

Continued on next page...

Continued from previous page...

Atom-1	Atom-2	Interatomic distance (Å)	Clash overlap (Å)
1:C:172:SER:OG	1:C:173:GLN:N	2.54	0.41
1:A:808:ASP:HB3	1:A:811:LYS:HE2	2.02	0.41
1:A:106:PHE:CD1	1:A:117:LEU:HD23	2.55	0.41
1:A:129:LYS:HB3	1:A:133:PHE:HZ	1.86	0.41
1:A:934:ILE:HD13	1:A:934:ILE:HA	1.91	0.41
1:A:1062:PHE:HB3	1:A:1064:HIS:CE1	2.56	0.41
1:C:48:LEU:HG	1:C:278:LYS:HG3	2.03	0.41
1:B:1041:ASP:HB3	1:C:1030:SER:OG	2.20	0.41
1:C:581:THR:O	1:C:582:LEU:HG	2.21	0.41
1:C:595:VAL:HG22	1:C:612:TYR:CD1	2.55	0.41
1:A:353:TRP:CZ2	1:A:466:ARG:HB2	2.56	0.41
1:C:80:ASP:O	1:C:265:TYR:OH	2.24	0.41
1:B:46:SER:N	1:B:280:ASN:O	2.52	0.40
1:A:448:ASN:HB3	1:A:497:PHE:HB2	2.02	0.40
1:A:611:LEU:HD22	1:A:666:ILE:HG23	2.02	0.40
1:B:958:ALA:O	1:B:961:THR:HB	2.21	0.40
1:A:55:PHE:O	1:A:270:LEU:HA	2.21	0.40
1:A:457:ARG:NH1	1:A:458:LYS:HB2	2.35	0.40
1:A:977:LEU:HD23	1:A:977:LEU:HA	1.83	0.40
1:B:216:LEU:HG	1:B:217:PRO:HD2	2.03	0.40
1:B:1115:ILE:H	1:B:1115:ILE:HD12	1.86	0.40
1:C:195:LYS:CG	1:C:202:LYS:HB2	2.51	0.40
1:A:722:VAL:HG22	1:A:1065:VAL:HG22	2.03	0.40
1:A:996:LEU:HD12	1:A:996:LEU:HA	1.88	0.40
1:B:746:SER:O	1:B:749:CYS:N	2.48	0.40
1:B:980:ILE:H	1:B:980:ILE:HD12	1.87	0.40
1:C:466:ARG:HG3	1:C:468:ILE:HG23	2.02	0.40

There are no symmetry-related clashes.

5.3 Torsion angles [i](#)

5.3.1 Protein backbone [i](#)

In the following table, the Percentiles column shows the percent Ramachandran outliers of the chain as a percentile score with respect to all PDB entries followed by that with respect to all EM entries.

The Analysed column shows the number of residues for which the backbone conformation was analysed, and the total number of residues.

Mol	Chain	Analysed	Favoured	Allowed	Outliers	Percentiles	
1	A	1017/1204 (84%)	958 (94%)	56 (6%)	3 (0%)	41	75
1	B	803/1204 (67%)	754 (94%)	46 (6%)	3 (0%)	34	71
1	C	1009/1204 (84%)	952 (94%)	54 (5%)	3 (0%)	41	75
All	All	2829/3612 (78%)	2664 (94%)	156 (6%)	9 (0%)	44	75

All (9) Ramachandran outliers are listed below:

Mol	Chain	Res	Type
1	A	621	PRO
1	B	621	PRO
1	C	621	PRO
1	C	794	ILE
1	A	794	ILE
1	C	320	VAL
1	A	320	VAL
1	B	320	VAL
1	B	794	ILE

5.3.2 Protein sidechains [i](#)

In the following table, the Percentiles column shows the percent sidechain outliers of the chain as a percentile score with respect to all PDB entries followed by that with respect to all EM entries.

The Analysed column shows the number of residues for which the sidechain conformation was analysed, and the total number of residues.

Mol	Chain	Analysed	Rotameric	Outliers	Percentiles	
1	A	903/1049 (86%)	903 (100%)	0	100	100
1	B	720/1049 (69%)	720 (100%)	0	100	100
1	C	896/1049 (85%)	895 (100%)	1 (0%)	93	97
All	All	2519/3147 (80%)	2518 (100%)	1 (0%)	100	100

All (1) residues with a non-rotameric sidechain are listed below:

Mol	Chain	Res	Type
1	C	97	LYS

Sometimes sidechains can be flipped to improve hydrogen bonding and reduce clashes. All (4) such sidechains are listed below:

Mol	Chain	Res	Type
1	A	115	GLN
1	A	1005	GLN
1	A	1048	HIS
1	C	1002	GLN

5.3.3 RNA [i](#)

There are no RNA molecules in this entry.

5.4 Non-standard residues in protein, DNA, RNA chains [i](#)

There are no non-standard protein/DNA/RNA residues in this entry.

5.5 Carbohydrates [i](#)

16 monosaccharides are modelled in this entry.

In the following table, the Counts columns list the number of bonds (or angles) for which Mogul statistics could be retrieved, the number of bonds (or angles) that are observed in the model and the number of bonds (or angles) that are defined in the Chemical Component Dictionary. The Link column lists molecule types, if any, to which the group is linked. The Z score for a bond length (or angle) is the number of standard deviations the observed value is removed from the expected value. A bond length (or angle) with $|Z| > 2$ is considered an outlier worth inspection. RMSZ is the root-mean-square of all Z scores of the bond lengths (or angles).

Mol	Type	Chain	Res	Link	Bond lengths			Bond angles		
					Counts	RMSZ	# Z > 2	Counts	RMSZ	# Z > 2
2	NAG	D	1	1,2	14,14,15	1.94	4 (28%)	17,19,21	1.21	2 (11%)
2	NAG	D	2	2	14,14,15	2.02	3 (21%)	17,19,21	1.01	1 (5%)
2	NAG	E	1	2	14,14,15	1.94	3 (21%)	17,19,21	1.50	5 (29%)
2	NAG	E	2	2	14,14,15	2.02	3 (21%)	17,19,21	1.13	2 (11%)
2	NAG	F	1	1,2	14,14,15	2.02	4 (28%)	17,19,21	1.60	4 (23%)
2	NAG	F	2	2	14,14,15	2.05	3 (21%)	17,19,21	1.15	2 (11%)
2	NAG	G	1	2	14,14,15	2.01	3 (21%)	17,19,21	1.10	2 (11%)
2	NAG	G	2	2	14,14,15	2.03	3 (21%)	17,19,21	1.14	2 (11%)
2	NAG	H	1	1,2	14,14,15	1.99	4 (28%)	17,19,21	1.24	2 (11%)
2	NAG	H	2	2	14,14,15	2.08	3 (21%)	17,19,21	1.34	3 (17%)
2	NAG	I	1	1,2	14,14,15	2.01	3 (21%)	17,19,21	1.60	3 (17%)
2	NAG	I	2	2	14,14,15	2.13	4 (28%)	17,19,21	1.18	3 (17%)
2	NAG	J	1	1,2	14,14,15	1.95	3 (21%)	17,19,21	1.05	2 (11%)

Mol	Type	Chain	Res	Link	Bond lengths			Bond angles		
					Counts	RMSZ	# Z > 2	Counts	RMSZ	# Z > 2
2	NAG	J	2	2	14,14,15	1.99	3 (21%)	17,19,21	1.08	1 (5%)
2	NAG	K	1	1,2	14,14,15	2.04	5 (35%)	17,19,21	2.12	5 (29%)
2	NAG	K	2	2	14,14,15	2.00	3 (21%)	17,19,21	1.16	2 (11%)

In the following table, the Chirals column lists the number of chiral outliers, the number of chiral centers analysed, the number of these observed in the model and the number defined in the Chemical Component Dictionary. Similar counts are reported in the Torsion and Rings columns. '-' means no outliers of that kind were identified.

Mol	Type	Chain	Res	Link	Chirals	Torsions	Rings
2	NAG	D	1	1,2	-	0/6/23/26	0/1/1/1
2	NAG	D	2	2	-	1/6/23/26	0/1/1/1
2	NAG	E	1	2	-	1/6/23/26	0/1/1/1
2	NAG	E	2	2	-	1/6/23/26	0/1/1/1
2	NAG	F	1	1,2	-	0/6/23/26	0/1/1/1
2	NAG	F	2	2	-	2/6/23/26	0/1/1/1
2	NAG	G	1	2	-	0/6/23/26	0/1/1/1
2	NAG	G	2	2	-	2/6/23/26	0/1/1/1
2	NAG	H	1	1,2	-	4/6/23/26	0/1/1/1
2	NAG	H	2	2	-	2/6/23/26	0/1/1/1
2	NAG	I	1	1,2	-	2/6/23/26	0/1/1/1
2	NAG	I	2	2	-	0/6/23/26	0/1/1/1
2	NAG	J	1	1,2	-	0/6/23/26	0/1/1/1
2	NAG	J	2	2	-	2/6/23/26	0/1/1/1
2	NAG	K	1	1,2	-	2/6/23/26	0/1/1/1
2	NAG	K	2	2	-	2/6/23/26	0/1/1/1

All (54) bond length outliers are listed below:

Mol	Chain	Res	Type	Atoms	Z	Observed(Å)	Ideal(Å)
2	I	2	NAG	O5-C1	5.61	1.52	1.43
2	H	2	NAG	O5-C1	5.45	1.52	1.43
2	F	2	NAG	O5-C1	5.41	1.52	1.43
2	G	2	NAG	O5-C1	5.32	1.52	1.43
2	K	2	NAG	O5-C1	5.28	1.52	1.43
2	K	1	NAG	O5-C1	5.27	1.52	1.43
2	F	1	NAG	O5-C1	5.26	1.52	1.43
2	J	2	NAG	O5-C1	5.25	1.52	1.43
2	I	1	NAG	O5-C1	5.24	1.52	1.43
2	G	1	NAG	O5-C1	5.23	1.52	1.43

Continued on next page...

Continued from previous page...

Mol	Chain	Res	Type	Atoms	Z	Observed(Å)	Ideal(Å)
2	E	2	NAG	O5-C1	5.19	1.52	1.43
2	J	1	NAG	O5-C1	5.18	1.52	1.43
2	D	2	NAG	O5-C1	5.17	1.52	1.43
2	H	1	NAG	O5-C1	5.16	1.52	1.43
2	E	1	NAG	O5-C1	4.93	1.51	1.43
2	D	1	NAG	O5-C1	4.85	1.51	1.43
2	I	2	NAG	C7-N2	3.27	1.45	1.34
2	D	2	NAG	C7-N2	3.26	1.45	1.34
2	H	2	NAG	C7-N2	3.25	1.45	1.34
2	I	1	NAG	C7-N2	3.24	1.45	1.34
2	E	2	NAG	C7-N2	3.20	1.45	1.34
2	F	2	NAG	C7-N2	3.16	1.45	1.34
2	J	2	NAG	C7-N2	3.16	1.45	1.34
2	G	1	NAG	C7-N2	3.14	1.45	1.34
2	G	2	NAG	C7-N2	3.14	1.45	1.34
2	D	1	NAG	C7-N2	3.13	1.45	1.34
2	K	1	NAG	C7-N2	3.12	1.45	1.34
2	H	1	NAG	C7-N2	3.12	1.45	1.34
2	E	1	NAG	C7-N2	3.10	1.45	1.34
2	K	2	NAG	C7-N2	3.07	1.44	1.34
2	F	1	NAG	C7-N2	3.06	1.44	1.34
2	I	2	NAG	C2-N2	2.99	1.51	1.46
2	J	1	NAG	C7-N2	2.97	1.44	1.34
2	D	2	NAG	C2-N2	2.95	1.51	1.46
2	H	2	NAG	C2-N2	2.93	1.51	1.46
2	E	2	NAG	C2-N2	2.87	1.51	1.46
2	F	2	NAG	C2-N2	2.86	1.51	1.46
2	J	2	NAG	C2-N2	2.81	1.51	1.46
2	G	1	NAG	C2-N2	2.80	1.51	1.46
2	G	2	NAG	C2-N2	2.80	1.51	1.46
2	I	1	NAG	C2-N2	2.75	1.51	1.46
2	E	1	NAG	C2-N2	2.70	1.50	1.46
2	D	1	NAG	C2-N2	2.60	1.50	1.46
2	K	2	NAG	C2-N2	2.57	1.50	1.46
2	F	1	NAG	C2-N2	2.56	1.50	1.46
2	K	1	NAG	C2-N2	2.56	1.50	1.46
2	J	1	NAG	C2-N2	2.45	1.50	1.46
2	H	1	NAG	C2-N2	2.44	1.50	1.46
2	I	2	NAG	O5-C5	2.25	1.48	1.43
2	H	1	NAG	C3-C2	-2.13	1.48	1.52
2	K	1	NAG	C3-C2	-2.12	1.48	1.52
2	D	1	NAG	C3-C2	-2.08	1.48	1.52

Continued on next page...

Continued from previous page...

Mol	Chain	Res	Type	Atoms	Z	Observed(Å)	Ideal(Å)
2	F	1	NAG	C3-C2	-2.04	1.48	1.52
2	K	1	NAG	O5-C5	2.03	1.47	1.43

All (41) bond angle outliers are listed below:

Mol	Chain	Res	Type	Atoms	Z	Observed(°)	Ideal(°)
2	K	1	NAG	C2-N2-C7	-4.68	116.24	122.90
2	K	1	NAG	C1-O5-C5	4.64	118.48	112.19
2	I	1	NAG	C1-O5-C5	4.01	117.62	112.19
2	F	1	NAG	C1-O5-C5	3.75	117.28	112.19
2	K	1	NAG	C6-C5-C4	-3.12	105.70	113.00
2	D	1	NAG	C2-N2-C7	-2.81	118.90	122.90
2	E	1	NAG	C4-C3-C2	2.73	115.01	111.02
2	F	1	NAG	C2-N2-C7	-2.72	119.03	122.90
2	H	2	NAG	C1-O5-C5	2.71	115.87	112.19
2	E	1	NAG	C3-C4-C5	2.69	115.03	110.24
2	K	2	NAG	C2-N2-C7	-2.58	119.23	122.90
2	K	1	NAG	C8-C7-N2	2.50	120.32	116.10
2	G	1	NAG	C2-N2-C7	-2.50	119.35	122.90
2	H	2	NAG	C8-C7-N2	2.49	120.32	116.10
2	D	1	NAG	C8-C7-N2	2.45	120.24	116.10
2	F	2	NAG	C8-C7-N2	2.41	120.19	116.10
2	F	2	NAG	C2-N2-C7	-2.40	119.49	122.90
2	G	2	NAG	C2-N2-C7	-2.39	119.50	122.90
2	H	2	NAG	C2-N2-C7	-2.38	119.51	122.90
2	F	1	NAG	C8-C7-N2	2.37	120.12	116.10
2	G	2	NAG	C8-C7-N2	2.36	120.10	116.10
2	G	1	NAG	C8-C7-N2	2.36	120.09	116.10
2	D	2	NAG	C8-C7-N2	2.34	120.07	116.10
2	I	1	NAG	C8-C7-N2	2.33	120.04	116.10
2	E	2	NAG	C8-C7-N2	2.32	120.03	116.10
2	J	2	NAG	C8-C7-N2	2.32	120.03	116.10
2	K	2	NAG	C8-C7-N2	2.29	119.98	116.10
2	E	1	NAG	C6-C5-C4	-2.29	107.64	113.00
2	I	1	NAG	C6-C5-C4	-2.27	107.68	113.00
2	J	1	NAG	C8-C7-N2	2.27	119.94	116.10
2	E	1	NAG	C8-C7-N2	2.21	119.84	116.10
2	I	2	NAG	C1-O5-C5	2.18	115.14	112.19
2	F	1	NAG	C6-C5-C4	-2.15	107.97	113.00
2	I	2	NAG	C8-C7-N2	2.14	119.73	116.10
2	H	1	NAG	C6-C5-C4	-2.10	108.08	113.00
2	J	1	NAG	C2-N2-C7	-2.09	119.93	122.90

Continued on next page...

Continued from previous page...

Mol	Chain	Res	Type	Atoms	Z	Observed(°)	Ideal(°)
2	H	1	NAG	C8-C7-N2	2.08	119.61	116.10
2	E	2	NAG	C2-N2-C7	-2.07	119.96	122.90
2	K	1	NAG	O5-C5-C4	2.06	115.84	110.83
2	E	1	NAG	C2-N2-C7	-2.05	119.98	122.90
2	I	2	NAG	O5-C5-C6	2.02	110.37	107.20

There are no chirality outliers.

All (21) torsion outliers are listed below:

Mol	Chain	Res	Type	Atoms
2	H	2	NAG	O5-C5-C6-O6
2	H	1	NAG	C4-C5-C6-O6
2	K	1	NAG	C4-C5-C6-O6
2	F	2	NAG	O5-C5-C6-O6
2	K	2	NAG	O5-C5-C6-O6
2	H	2	NAG	C4-C5-C6-O6
2	K	1	NAG	O5-C5-C6-O6
2	F	2	NAG	C4-C5-C6-O6
2	H	1	NAG	O5-C5-C6-O6
2	J	2	NAG	O5-C5-C6-O6
2	K	2	NAG	C4-C5-C6-O6
2	J	2	NAG	C4-C5-C6-O6
2	I	1	NAG	O5-C5-C6-O6
2	G	2	NAG	O5-C5-C6-O6
2	H	1	NAG	C1-C2-N2-C7
2	E	1	NAG	O5-C5-C6-O6
2	E	2	NAG	C4-C5-C6-O6
2	G	2	NAG	C4-C5-C6-O6
2	I	1	NAG	C4-C5-C6-O6
2	H	1	NAG	C3-C2-N2-C7
2	D	2	NAG	O5-C5-C6-O6

There are no ring outliers.

8 monomers are involved in 6 short contacts:

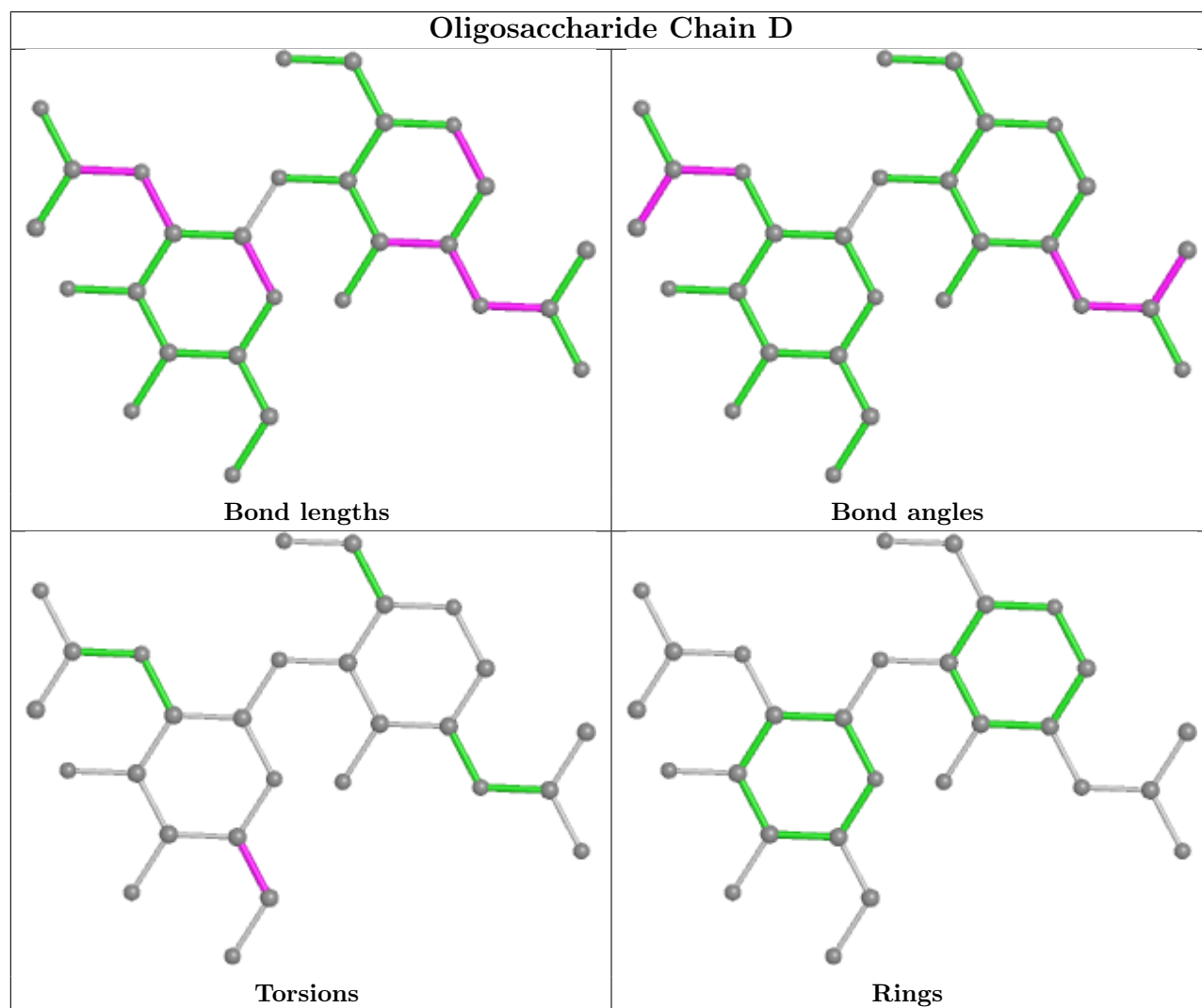
Mol	Chain	Res	Type	Clashes	Symm-Clashes
2	G	1	NAG	1	0
2	D	2	NAG	1	0
2	H	1	NAG	1	0
2	I	1	NAG	1	0
2	H	2	NAG	1	0

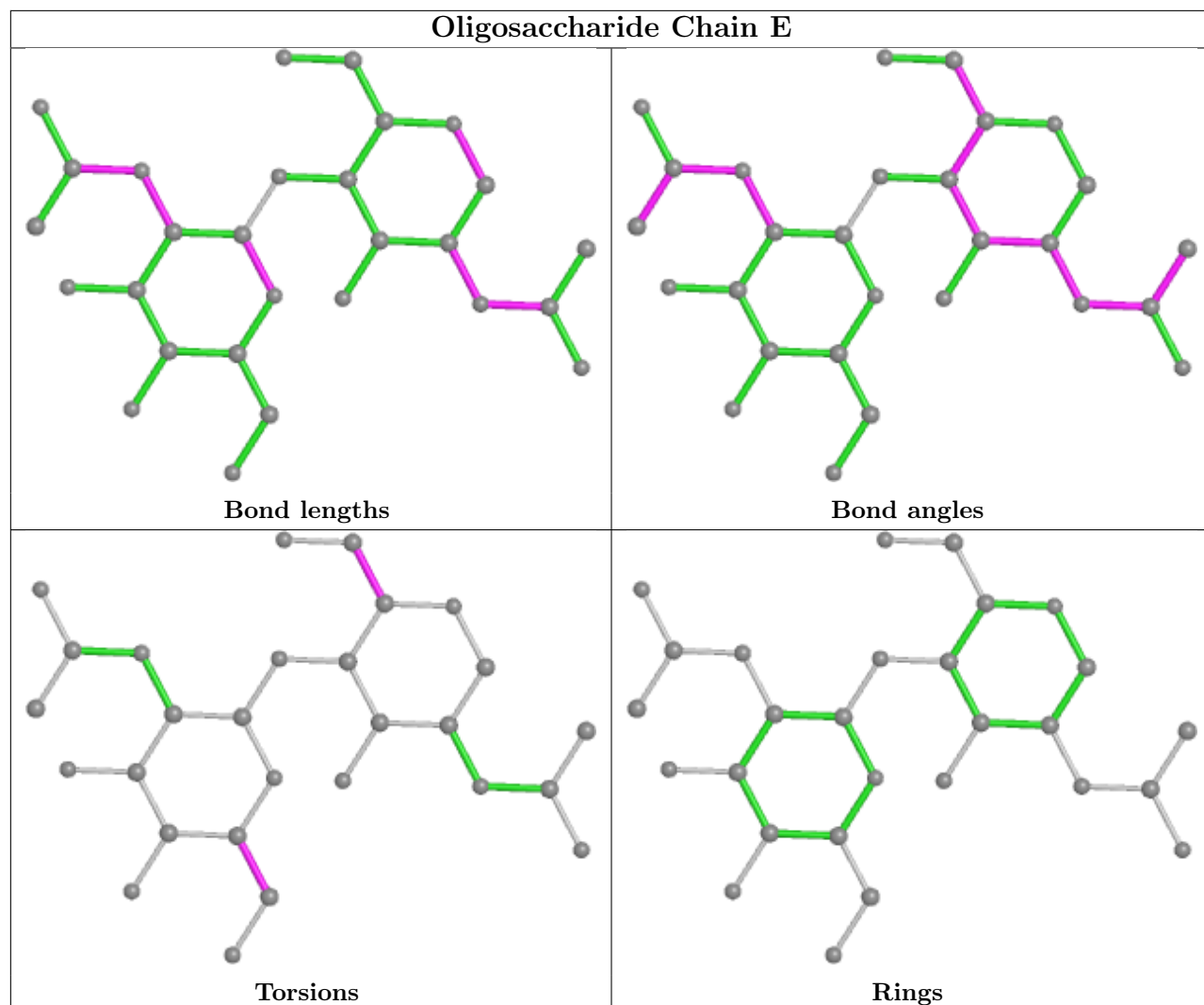
Continued on next page...

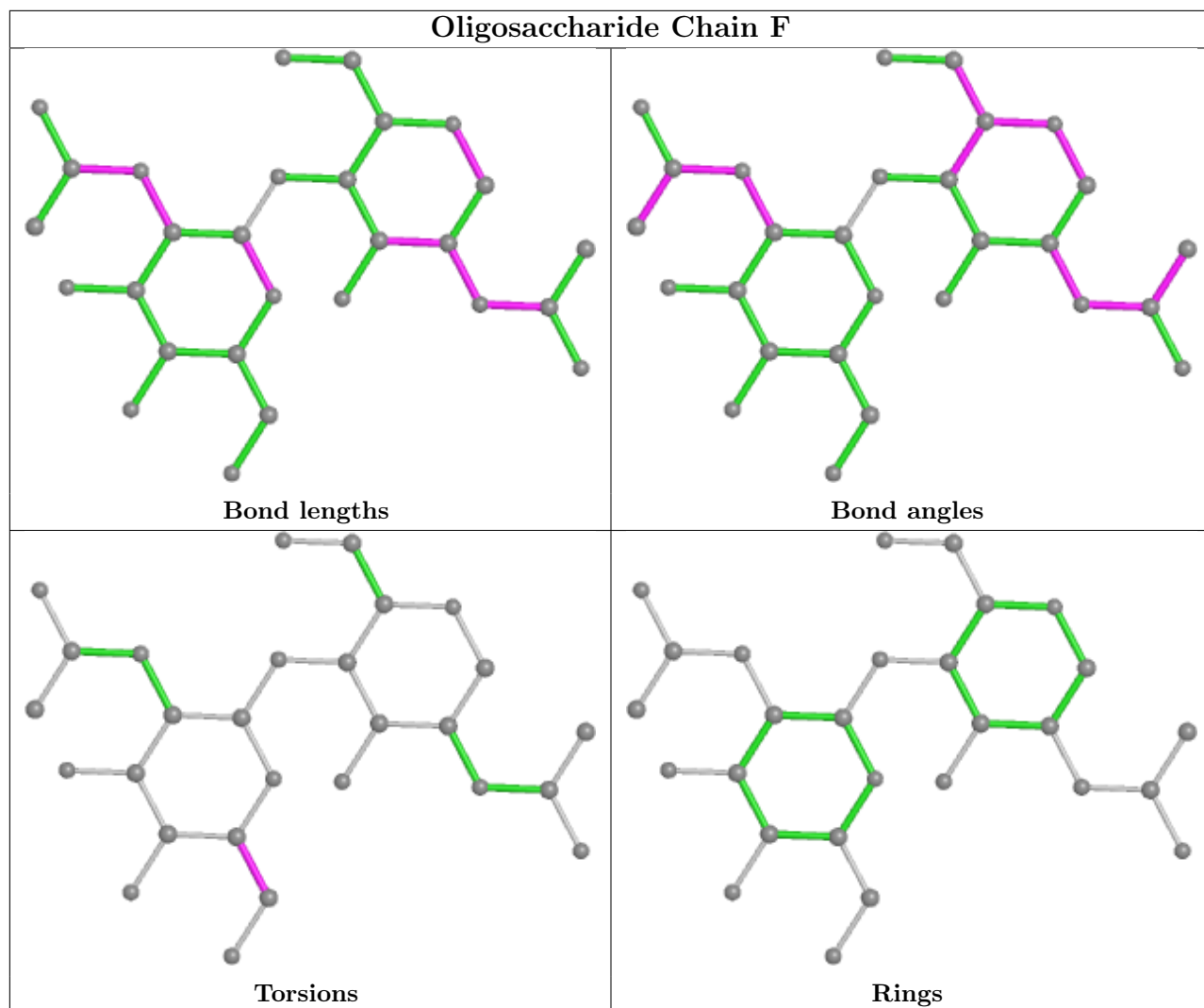
Continued from previous page...

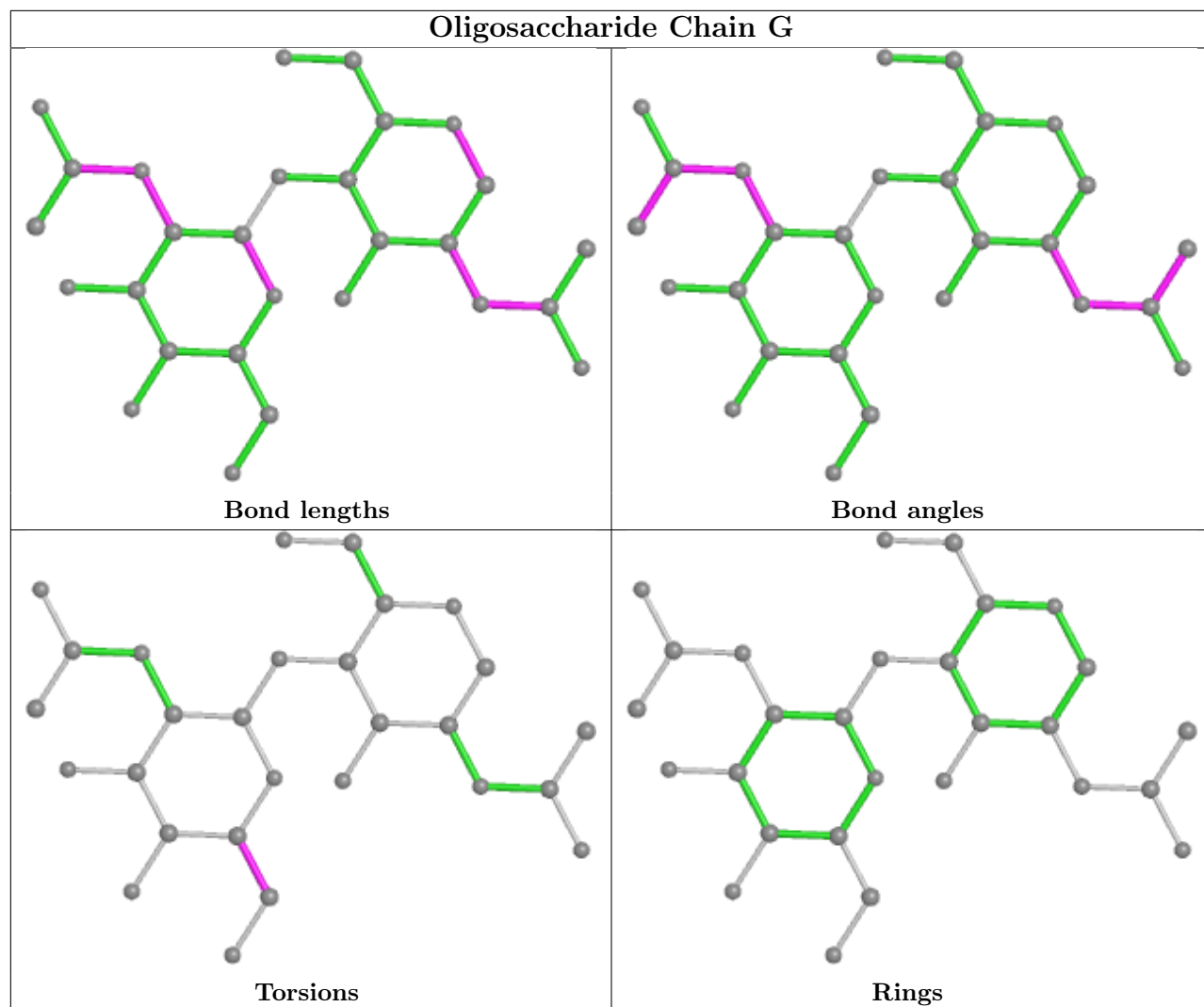
Mol	Chain	Res	Type	Clashes	Symm-Clashes
2	D	1	NAG	1	0
2	E	1	NAG	2	0
2	I	2	NAG	1	0

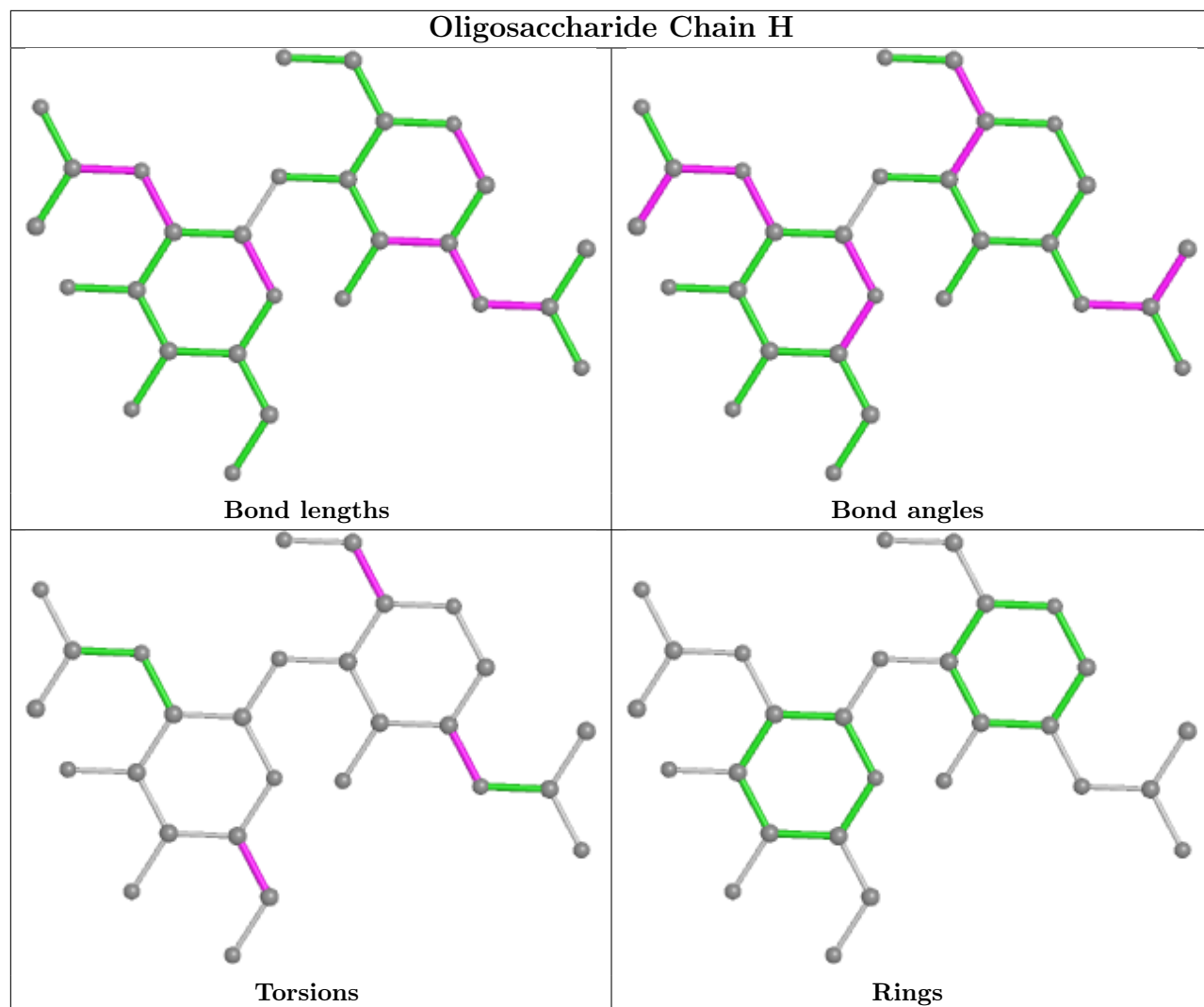
The following is a two-dimensional graphical depiction of Mogul quality analysis of bond lengths, bond angles, torsion angles, and ring geometry for oligosaccharide.

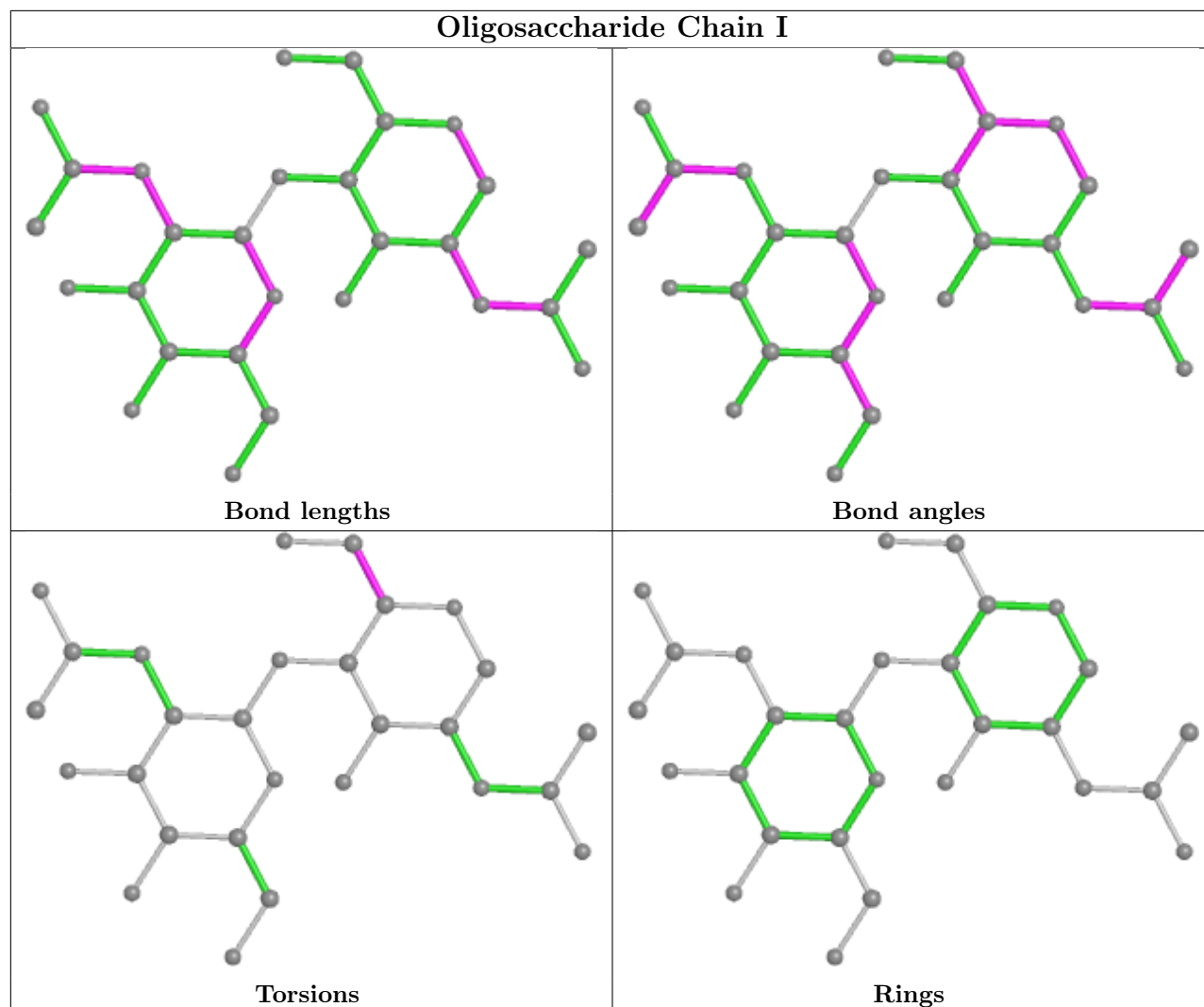


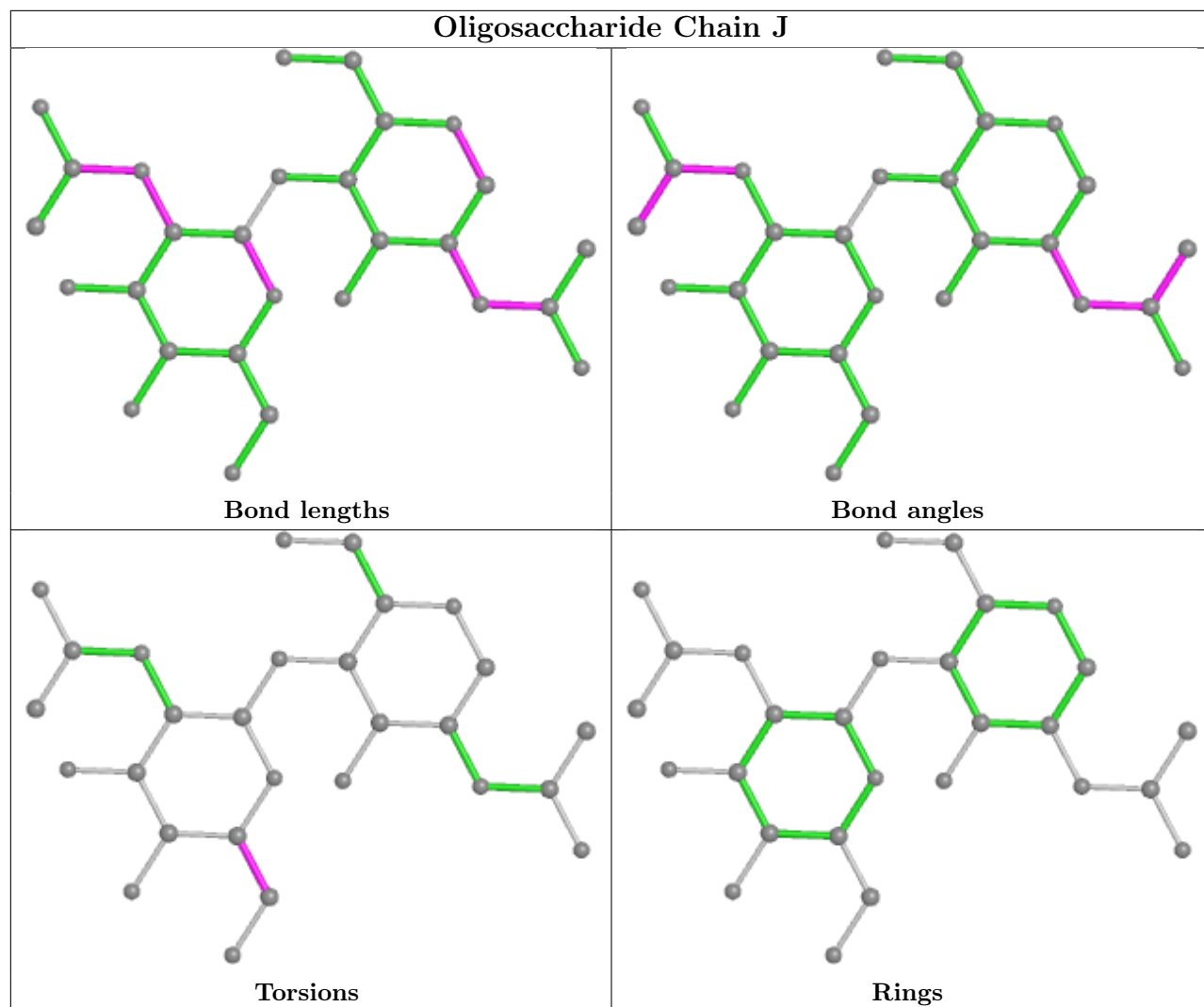


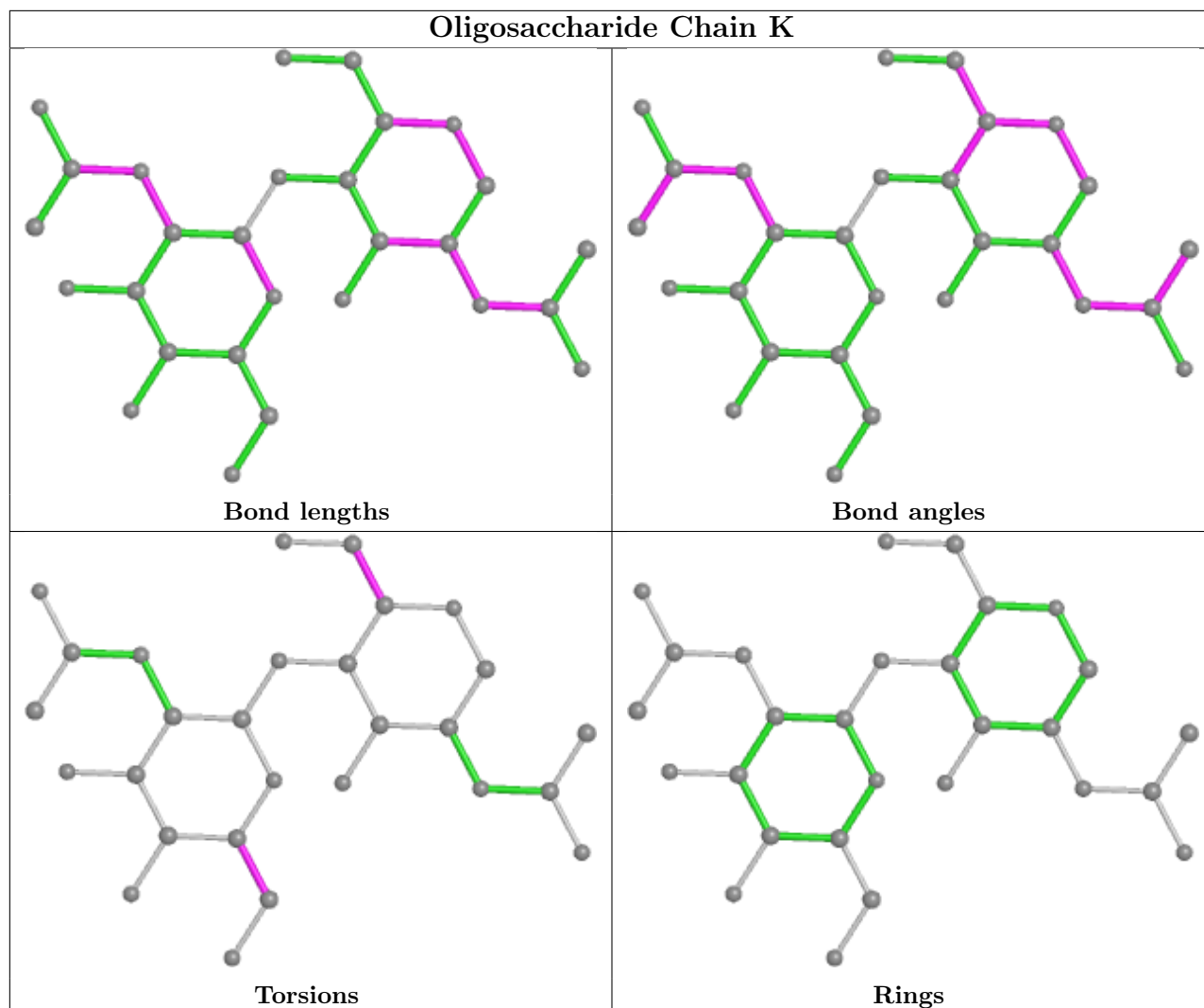












5.6 Ligand geometry [i](#)

15 ligands are modelled in this entry.

In the following table, the Counts columns list the number of bonds (or angles) for which Mogul statistics could be retrieved, the number of bonds (or angles) that are observed in the model and the number of bonds (or angles) that are defined in the Chemical Component Dictionary. The Link column lists molecule types, if any, to which the group is linked. The Z score for a bond length (or angle) is the number of standard deviations the observed value is removed from the expected value. A bond length (or angle) with $|Z| > 2$ is considered an outlier worth inspection. RMSZ is the root-mean-square of all Z scores of the bond lengths (or angles).

Mol	Type	Chain	Res	Link	Bond lengths			Bond angles		
					Counts	RMSZ	# $ Z > 2$	Counts	RMSZ	# $ Z > 2$
3	NAG	B	1304	1	14,14,15	2.02	3 (21%)	17,19,21	1.20	3 (17%)
3	NAG	B	1302	-	14,14,15	1.95	3 (21%)	17,19,21	1.16	2 (11%)
3	NAG	A	1302	1	14,14,15	2.06	3 (21%)	17,19,21	1.32	3 (17%)

Mol	Type	Chain	Res	Link	Bond lengths			Bond angles		
					Counts	RMSZ	# Z > 2	Counts	RMSZ	# Z > 2
3	NAG	A	1303	-	14,14,15	2.00	4 (28%)	17,19,21	1.22	3 (17%)
3	NAG	B	1303	-	14,14,15	2.00	5 (35%)	17,19,21	1.29	2 (11%)
3	NAG	A	1305	1	14,14,15	2.09	3 (21%)	17,19,21	1.45	4 (23%)
3	NAG	C	1303	-	14,14,15	2.03	3 (21%)	17,19,21	1.18	2 (11%)
3	NAG	B	1301	1	14,14,15	1.96	3 (21%)	17,19,21	1.25	3 (17%)
3	NAG	C	1302	1	14,14,15	2.02	3 (21%)	17,19,21	1.19	1 (5%)
3	NAG	A	1304	1	14,14,15	2.06	3 (21%)	17,19,21	1.47	3 (17%)
3	NAG	A	1301	1	14,14,15	1.92	3 (21%)	17,19,21	1.46	3 (17%)
3	NAG	B	1305	-	14,14,15	2.00	3 (21%)	17,19,21	1.21	3 (17%)
3	NAG	C	1304	-	14,14,15	1.99	3 (21%)	17,19,21	1.21	2 (11%)
3	NAG	C	1301	1	14,14,15	1.99	3 (21%)	17,19,21	1.23	2 (11%)
3	NAG	C	1305	1	14,14,15	2.02	3 (21%)	17,19,21	1.14	1 (5%)

In the following table, the Chirals column lists the number of chiral outliers, the number of chiral centers analysed, the number of these observed in the model and the number defined in the Chemical Component Dictionary. Similar counts are reported in the Torsion and Rings columns. '-' means no outliers of that kind were identified.

Mol	Type	Chain	Res	Link	Chirals	Torsions	Rings
3	NAG	B	1304	1	-	0/6/23/26	0/1/1/1
3	NAG	B	1302	-	-	2/6/23/26	0/1/1/1
3	NAG	A	1302	1	-	2/6/23/26	0/1/1/1
3	NAG	A	1303	-	-	0/6/23/26	0/1/1/1
3	NAG	B	1303	-	-	2/6/23/26	0/1/1/1
3	NAG	A	1305	1	-	0/6/23/26	0/1/1/1
3	NAG	C	1303	-	-	2/6/23/26	0/1/1/1
3	NAG	B	1301	1	-	0/6/23/26	0/1/1/1
3	NAG	C	1302	1	-	3/6/23/26	0/1/1/1
3	NAG	A	1304	1	-	3/6/23/26	0/1/1/1
3	NAG	A	1301	1	-	0/6/23/26	0/1/1/1
3	NAG	B	1305	-	-	0/6/23/26	0/1/1/1
3	NAG	C	1304	-	-	0/6/23/26	0/1/1/1
3	NAG	C	1301	1	-	0/6/23/26	0/1/1/1
3	NAG	C	1305	1	-	0/6/23/26	0/1/1/1

All (48) bond length outliers are listed below:

Mol	Chain	Res	Type	Atoms	Z	Observed(Å)	Ideal(Å)
3	A	1305	NAG	O5-C1	5.56	1.52	1.43
3	A	1302	NAG	O5-C1	5.53	1.52	1.43
3	C	1302	NAG	O5-C1	5.43	1.52	1.43
3	A	1304	NAG	O5-C1	5.42	1.52	1.43
3	B	1304	NAG	O5-C1	5.34	1.52	1.43
3	C	1305	NAG	O5-C1	5.32	1.52	1.43
3	C	1303	NAG	O5-C1	5.26	1.52	1.43
3	C	1301	NAG	O5-C1	5.22	1.52	1.43
3	B	1302	NAG	O5-C1	5.17	1.52	1.43
3	B	1305	NAG	O5-C1	5.10	1.51	1.43
3	B	1301	NAG	O5-C1	5.09	1.51	1.43
3	C	1304	NAG	O5-C1	5.08	1.51	1.43
3	A	1303	NAG	O5-C1	5.04	1.51	1.43
3	A	1301	NAG	O5-C1	5.00	1.51	1.43
3	B	1303	NAG	O5-C1	4.97	1.51	1.43
3	A	1304	NAG	C7-N2	3.41	1.46	1.34
3	B	1303	NAG	C7-N2	3.21	1.45	1.34
3	C	1302	NAG	C7-N2	3.20	1.45	1.34
3	A	1305	NAG	C7-N2	3.19	1.45	1.34
3	A	1304	NAG	C2-N2	3.19	1.51	1.46
3	C	1305	NAG	C7-N2	3.18	1.45	1.34
3	C	1303	NAG	C7-N2	3.17	1.45	1.34
3	A	1302	NAG	C7-N2	3.15	1.45	1.34
3	A	1303	NAG	C7-N2	3.15	1.45	1.34
3	B	1305	NAG	C7-N2	3.13	1.45	1.34
3	C	1304	NAG	C7-N2	3.11	1.45	1.34
3	B	1304	NAG	C7-N2	3.11	1.45	1.34
3	B	1301	NAG	C7-N2	3.11	1.45	1.34
3	C	1301	NAG	C7-N2	3.08	1.44	1.34
3	B	1302	NAG	C7-N2	3.05	1.44	1.34
3	A	1305	NAG	C2-N2	2.92	1.51	1.46
3	A	1301	NAG	C7-N2	2.92	1.44	1.34
3	C	1305	NAG	C2-N2	2.84	1.51	1.46
3	C	1302	NAG	C2-N2	2.83	1.51	1.46
3	C	1303	NAG	C2-N2	2.80	1.51	1.46
3	B	1305	NAG	C2-N2	2.77	1.51	1.46
3	B	1304	NAG	C2-N2	2.75	1.51	1.46
3	A	1303	NAG	C2-N2	2.72	1.50	1.46
3	B	1303	NAG	C2-N2	2.71	1.50	1.46
3	A	1302	NAG	C2-N2	2.70	1.50	1.46
3	C	1304	NAG	C2-N2	2.69	1.50	1.46
3	C	1301	NAG	C2-N2	2.62	1.50	1.46
3	B	1301	NAG	C2-N2	2.60	1.50	1.46

Continued on next page...

Continued from previous page...

Mol	Chain	Res	Type	Atoms	Z	Observed(Å)	Ideal(Å)
3	B	1302	NAG	C2-N2	2.53	1.50	1.46
3	A	1301	NAG	C2-N2	2.33	1.50	1.46
3	A	1303	NAG	O5-C5	2.05	1.47	1.43
3	B	1303	NAG	C3-C2	-2.03	1.48	1.52
3	B	1303	NAG	O5-C5	2.01	1.47	1.43

All (37) bond angle outliers are listed below:

Mol	Chain	Res	Type	Atoms	Z	Observed(°)	Ideal(°)
3	A	1304	NAG	C4-C3-C2	3.53	116.19	111.02
3	A	1305	NAG	C1-O5-C5	3.39	116.78	112.19
3	A	1301	NAG	C2-N2-C7	-3.08	118.51	122.90
3	A	1301	NAG	C1-C2-N2	-2.96	105.43	110.49
3	B	1303	NAG	C2-N2-C7	-2.93	118.73	122.90
3	C	1303	NAG	C2-N2-C7	-2.91	118.76	122.90
3	A	1304	NAG	C8-C7-N2	2.82	120.87	116.10
3	B	1305	NAG	C2-N2-C7	-2.70	119.06	122.90
3	B	1303	NAG	C8-C7-N2	2.69	120.65	116.10
3	C	1304	NAG	C2-N2-C7	-2.68	119.09	122.90
3	C	1303	NAG	C8-C7-N2	2.57	120.45	116.10
3	C	1301	NAG	C8-C7-N2	2.54	120.39	116.10
3	C	1301	NAG	C2-N2-C7	-2.49	119.36	122.90
3	A	1302	NAG	C1-O5-C5	2.46	115.53	112.19
3	B	1304	NAG	C2-N2-C7	-2.44	119.43	122.90
3	C	1304	NAG	C8-C7-N2	2.38	120.12	116.10
3	B	1304	NAG	C8-C7-N2	2.36	120.09	116.10
3	B	1305	NAG	C8-C7-N2	2.35	120.07	116.10
3	B	1302	NAG	C2-N2-C7	-2.34	119.58	122.90
3	A	1301	NAG	C8-C7-N2	2.33	120.05	116.10
3	A	1305	NAG	C8-C7-N2	2.33	120.04	116.10
3	A	1303	NAG	C2-N2-C7	-2.30	119.63	122.90
3	C	1305	NAG	C8-C7-N2	2.30	119.99	116.10
3	A	1303	NAG	C8-C7-N2	2.28	119.96	116.10
3	A	1305	NAG	O5-C1-C2	2.24	114.83	111.29
3	A	1302	NAG	C8-C7-N2	2.24	119.89	116.10
3	B	1301	NAG	C2-N2-C7	-2.23	119.72	122.90
3	C	1302	NAG	C8-C7-N2	2.23	119.87	116.10
3	B	1304	NAG	C6-C5-C4	-2.14	107.99	113.00
3	A	1303	NAG	C6-C5-C4	-2.10	108.08	113.00
3	B	1305	NAG	C6-C5-C4	-2.08	108.13	113.00
3	B	1301	NAG	C8-C7-N2	2.08	119.62	116.10
3	A	1302	NAG	O5-C1-C2	2.06	114.54	111.29

Continued on next page...

Continued from previous page...

Mol	Chain	Res	Type	Atoms	Z	Observed(°)	Ideal(°)
3	A	1304	NAG	O7-C7-C8	-2.05	118.26	122.06
3	A	1305	NAG	C6-C5-C4	-2.05	108.21	113.00
3	B	1301	NAG	C1-C2-N2	-2.02	107.03	110.49
3	B	1302	NAG	C8-C7-N2	2.02	119.52	116.10

There are no chirality outliers.

All (14) torsion outliers are listed below:

Mol	Chain	Res	Type	Atoms
3	A	1302	NAG	C4-C5-C6-O6
3	B	1303	NAG	O5-C5-C6-O6
3	B	1303	NAG	C4-C5-C6-O6
3	B	1302	NAG	C4-C5-C6-O6
3	A	1302	NAG	O5-C5-C6-O6
3	A	1304	NAG	C1-C2-N2-C7
3	C	1303	NAG	C4-C5-C6-O6
3	C	1303	NAG	O5-C5-C6-O6
3	B	1302	NAG	O5-C5-C6-O6
3	C	1302	NAG	C4-C5-C6-O6
3	C	1302	NAG	O5-C5-C6-O6
3	A	1304	NAG	O5-C5-C6-O6
3	A	1304	NAG	C3-C2-N2-C7
3	C	1302	NAG	C1-C2-N2-C7

There are no ring outliers.

4 monomers are involved in 5 short contacts:

Mol	Chain	Res	Type	Clashes	Symm-Clashes
3	B	1304	NAG	1	0
3	A	1303	NAG	2	0
3	B	1303	NAG	1	0
3	C	1303	NAG	1	0

5.7 Other polymers [i](#)

There are no such residues in this entry.

5.8 Polymer linkage issues [i](#)

There are no chain breaks in this entry.

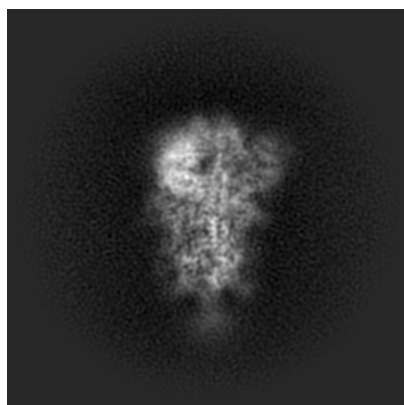
6 Map visualisation [i](#)

This section contains visualisations of the EMDB entry EMD-32492. These allow visual inspection of the internal detail of the map and identification of artifacts.

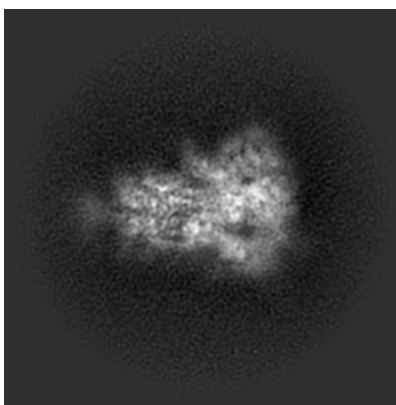
No raw map or half-maps were deposited for this entry and therefore no images, graphs, etc. pertaining to the raw map can be shown.

6.1 Orthogonal projections [i](#)

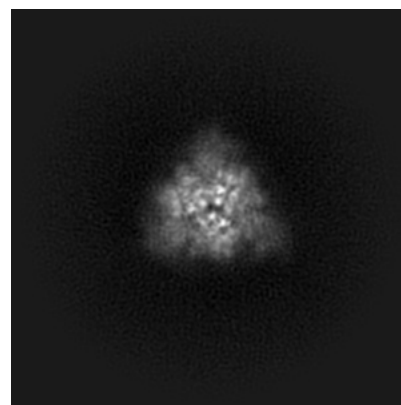
6.1.1 Primary map



X



Y

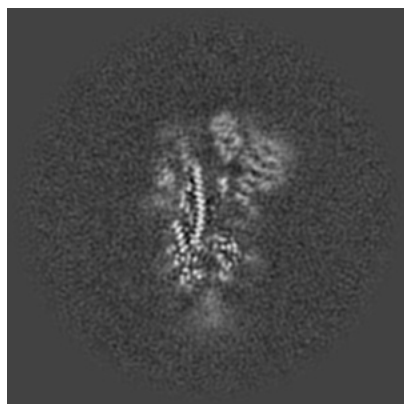


Z

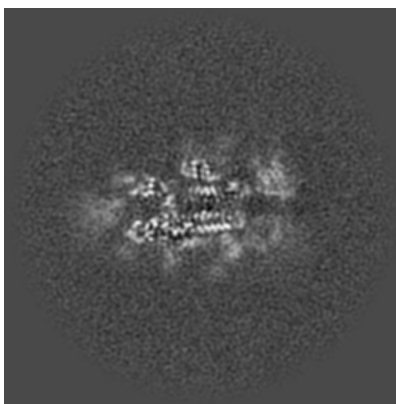
The images above show the map projected in three orthogonal directions.

6.2 Central slices [i](#)

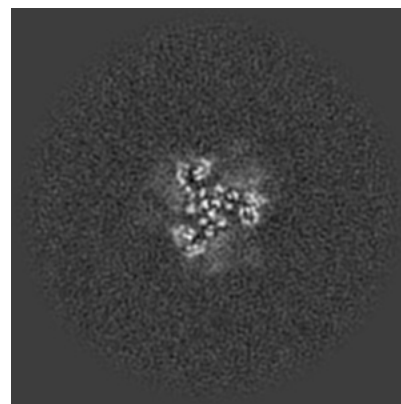
6.2.1 Primary map



X Index: 128



Y Index: 128

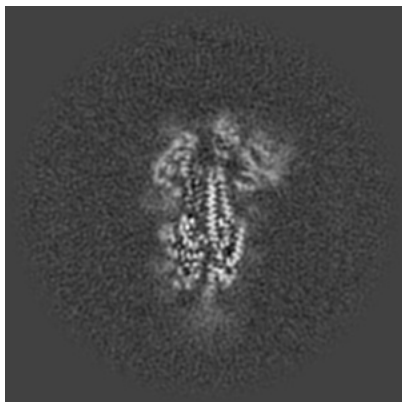


Z Index: 128

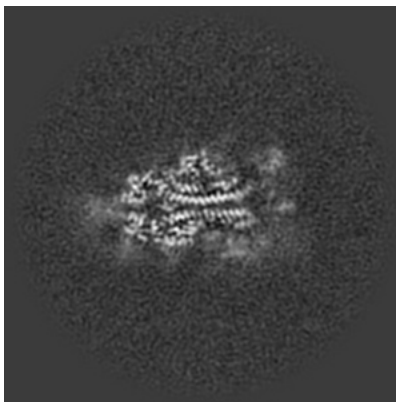
The images above show central slices of the map in three orthogonal directions.

6.3 Largest variance slices [i](#)

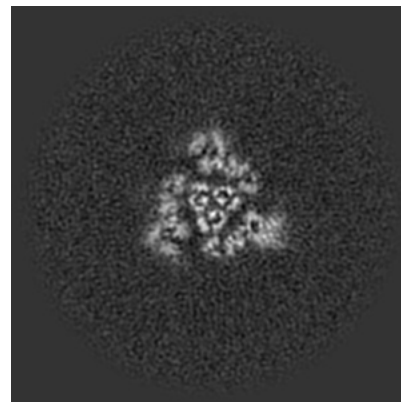
6.3.1 Primary map



X Index: 132



Y Index: 132



Z Index: 148

The images above show the largest variance slices of the map in three orthogonal directions.

6.4 Orthogonal surface views [i](#)

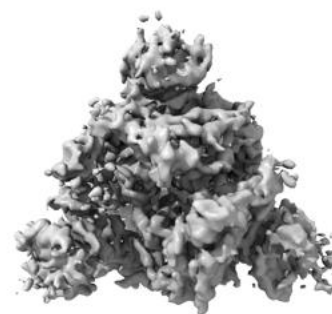
6.4.1 Primary map



X



Y



Z

The images above show the 3D surface view of the map at the recommended contour level 0.506. These images, in conjunction with the slice images, may facilitate assessment of whether an appropriate contour level has been provided.

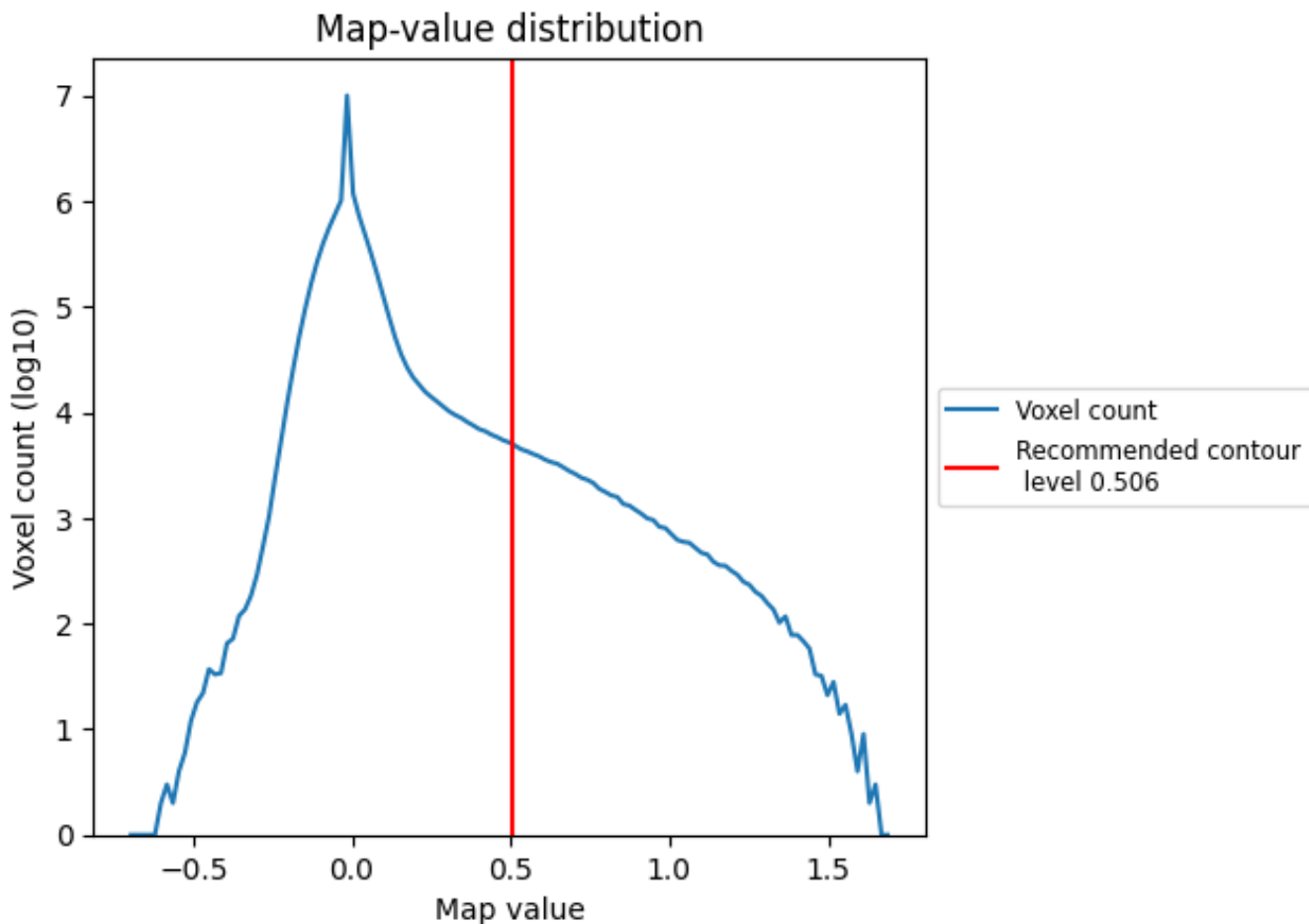
6.5 Mask visualisation

This section was not generated. No masks/segmentation were deposited.

7 Map analysis [i](#)

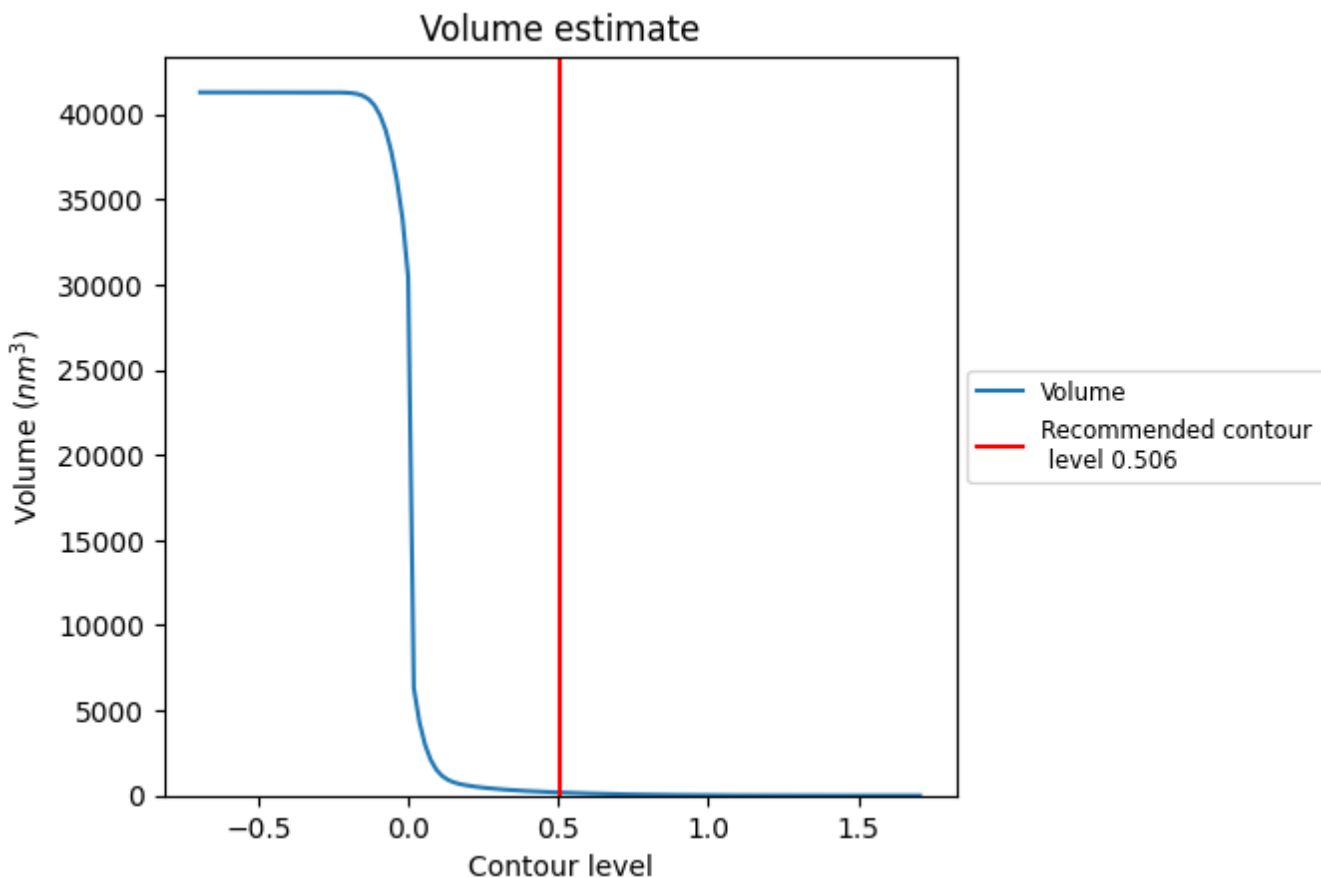
This section contains the results of statistical analysis of the map.

7.1 Map-value distribution [i](#)



The map-value distribution is plotted in 128 intervals along the x-axis. The y-axis is logarithmic. A spike in this graph at zero usually indicates that the volume has been masked.

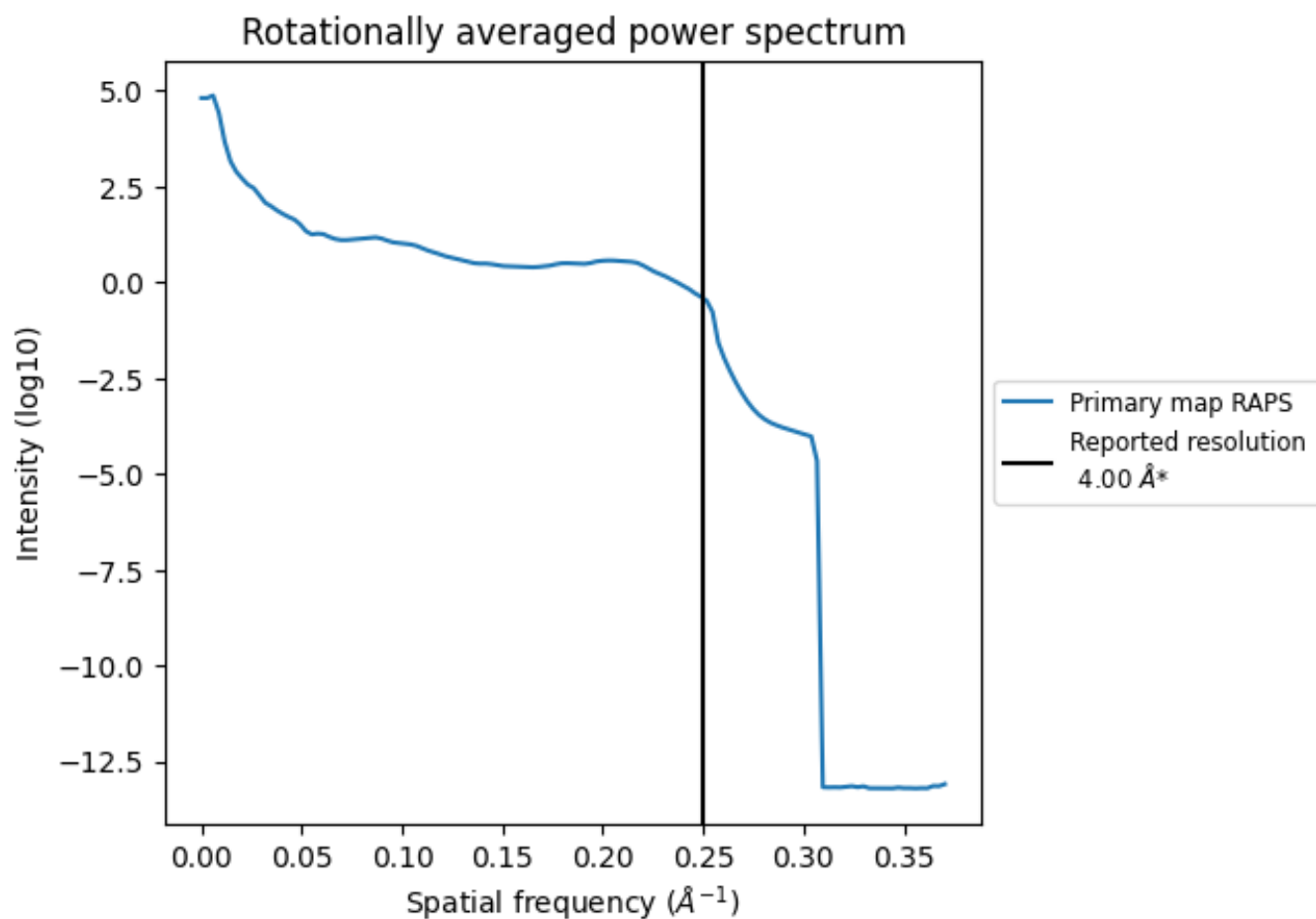
7.2 Volume estimate [i](#)



The volume at the recommended contour level is 177 nm³; this corresponds to an approximate mass of 160 kDa.

The volume estimate graph shows how the enclosed volume varies with the contour level. The recommended contour level is shown as a vertical line and the intersection between the line and the curve gives the volume of the enclosed surface at the given level.

7.3 Rotationally averaged power spectrum [i](#)

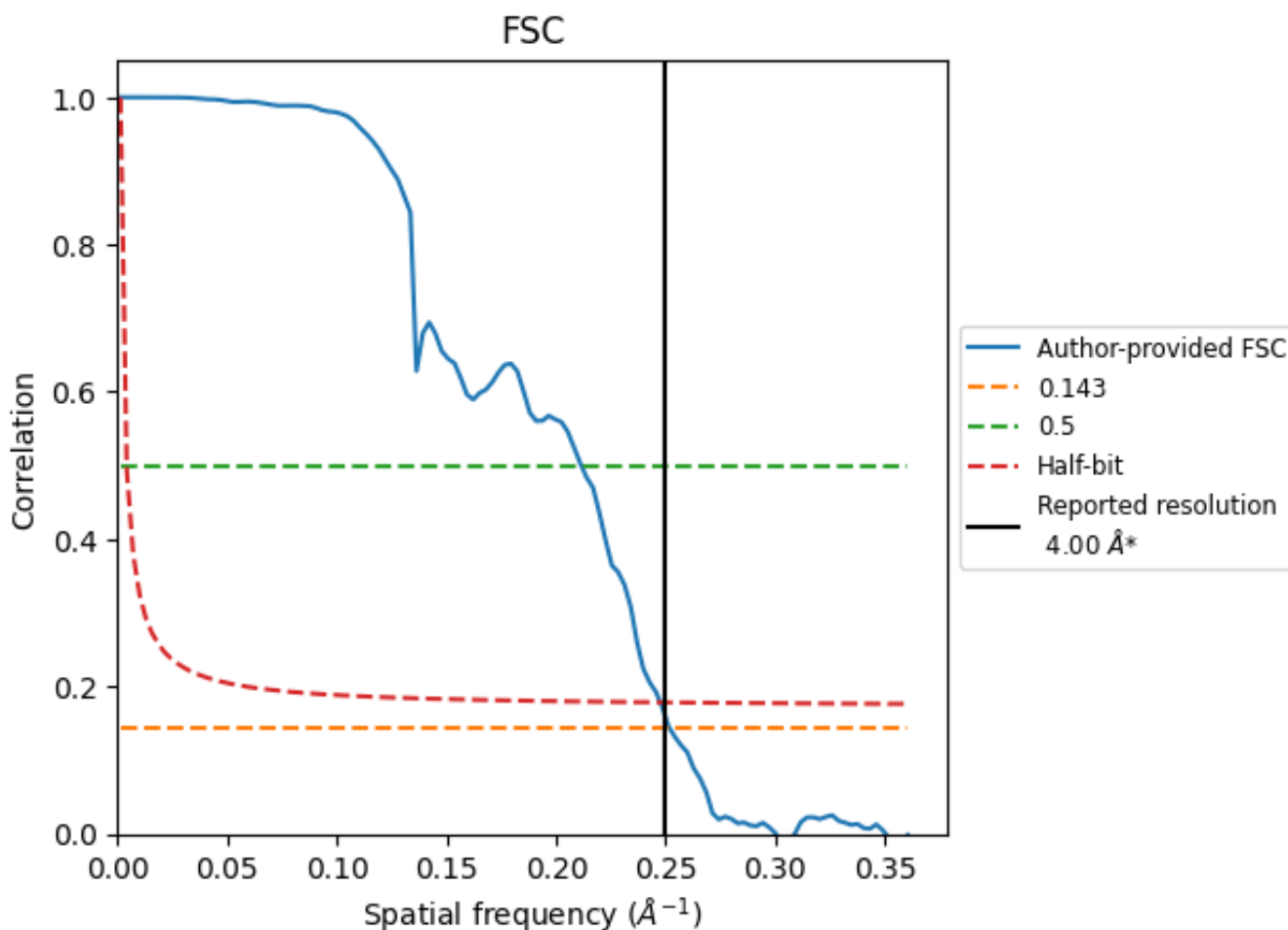


*Reported resolution corresponds to spatial frequency of 0.250 Å⁻¹

8 Fourier-Shell correlation [i](#)

Fourier-Shell Correlation (FSC) is the most commonly used method to estimate the resolution of single-particle and subtomogram-averaged maps. The shape of the curve depends on the imposed symmetry, mask and whether or not the two 3D reconstructions used were processed from a common reference. The reported resolution is shown as a black line. A curve is displayed for the half-bit criterion in addition to lines showing the 0.143 gold standard cut-off and 0.5 cut-off.

8.1 FSC [i](#)



*Reported resolution corresponds to spatial frequency of 0.250 Å⁻¹

8.2 Resolution estimates [i](#)

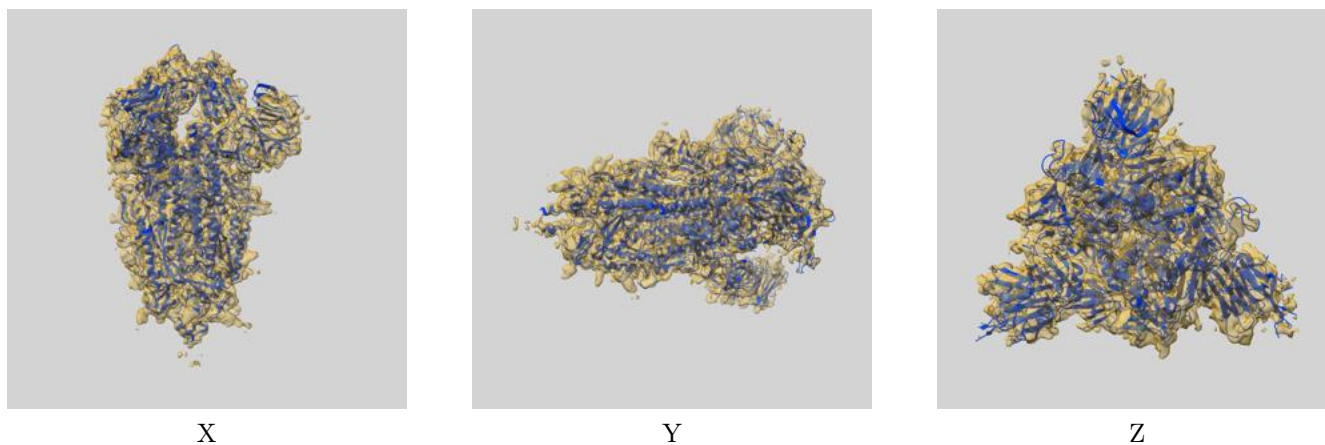
Resolution estimate (Å)	Estimation criterion (FSC cut-off)		
	0.143	0.5	Half-bit
Reported by author	4.00	-	-
Author-provided FSC curve	3.97	4.73	4.04
Unmasked-calculated*	-	-	-

*Resolution estimate based on FSC curve calculated by comparison of deposited half-maps.

9 Map-model fit [i](#)

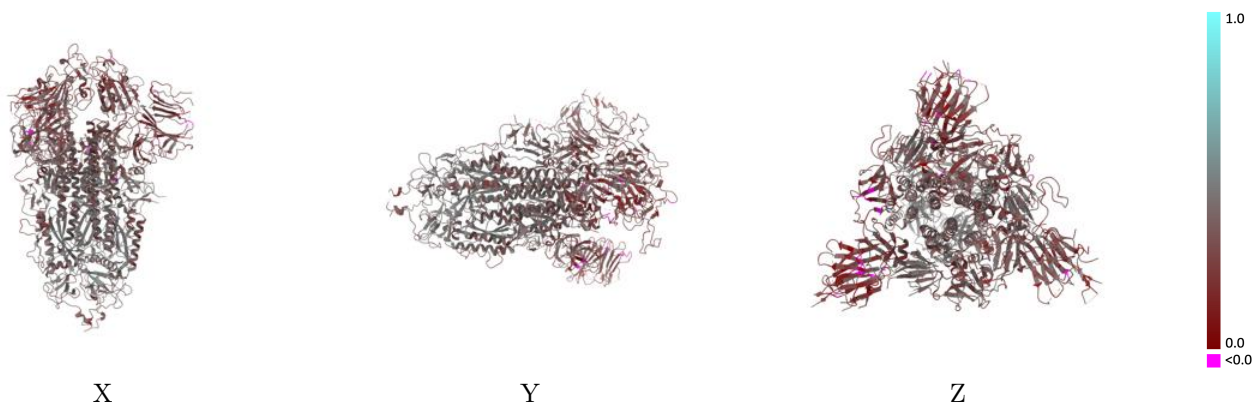
This section contains information regarding the fit between EMDB map EMD-32492 and PDB model 7WGY. Per-residue inclusion information can be found in section 3 on page 8.

9.1 Map-model overlay [i](#)



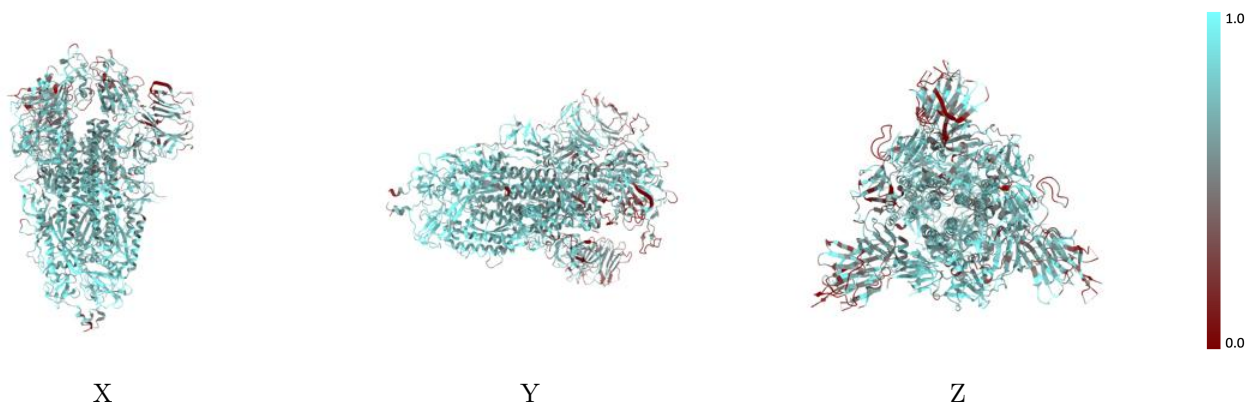
The images above show the 3D surface view of the map at the recommended contour level 0.506 at 50% transparency in yellow overlaid with a ribbon representation of the model coloured in blue. These images allow for the visual assessment of the quality of fit between the atomic model and the map.

9.2 Q-score mapped to coordinate model [i](#)



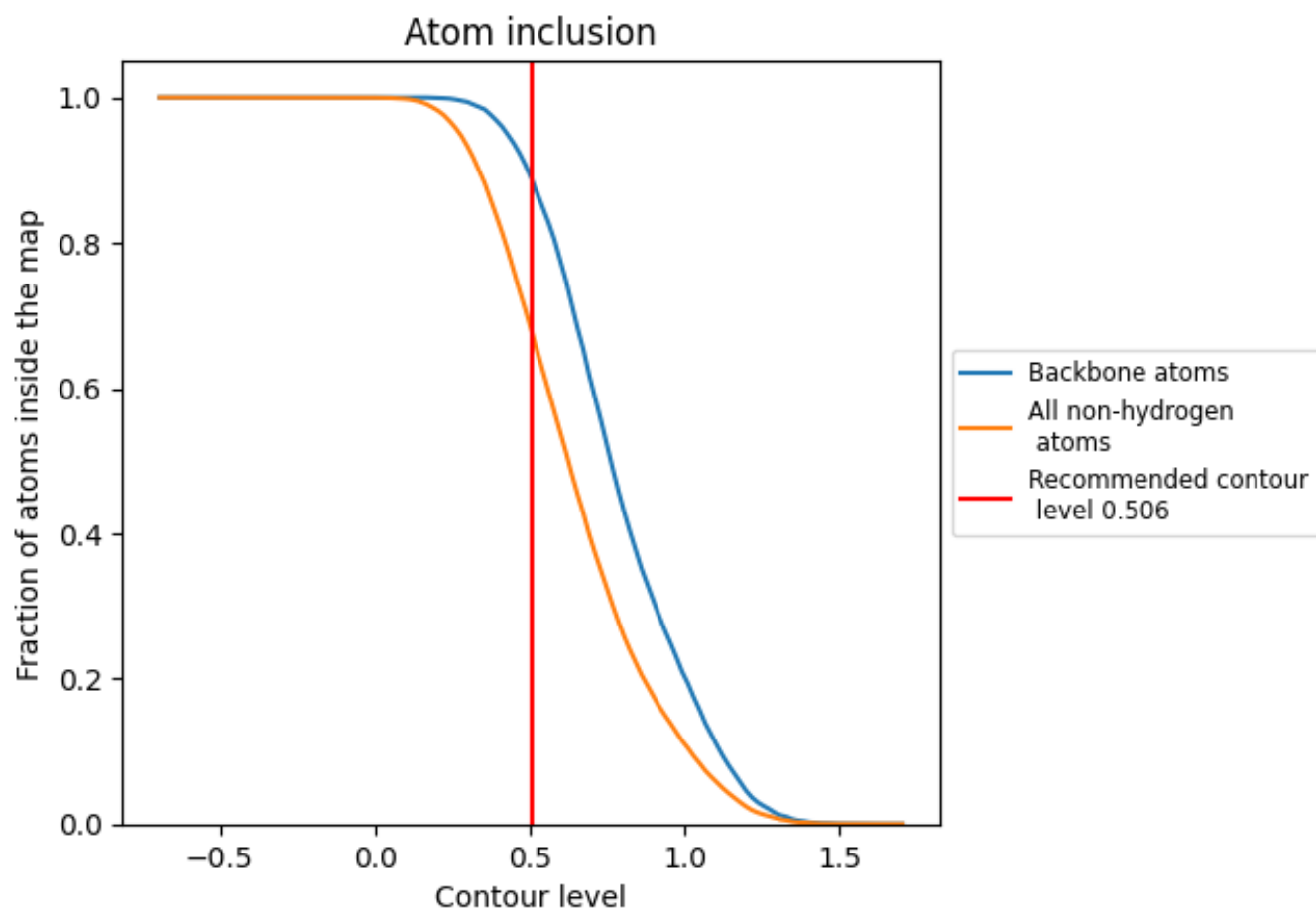
The images above show the model with each residue coloured according to its Q-score. This shows their resolvability in the map with higher Q-score values reflecting better resolvability. Please note: Q-score is calculating the resolvability of atoms, and thus high values are only expected at resolutions at which atoms can be resolved. Low Q-score values may therefore be expected for many entries.

9.3 Atom inclusion mapped to coordinate model [i](#)



The images above show the model with each residue coloured according to its atom inclusion. This shows to what extent they are inside the map at the recommended contour level (0.506).

























9.4 Atom inclusion [i](#)



At the recommended contour level, 89% of all backbone atoms, 68% of all non-hydrogen atoms, are inside the map.

9.5 Map-model fit summary

The table lists the average atom inclusion at the recommended contour level (0.506) and Q-score for the entire model and for each chain.

Chain	Atom inclusion	Q-score
All	 0.6787	 0.3540
A	 0.6846	 0.3580
B	 0.6766	 0.3570
C	 0.6782	 0.3480
D	 0.6071	 0.4030
E	 0.5357	 0.2760
F	 0.5714	 0.3250
G	 0.2857	 0.2600
H	 0.5714	 0.3370
I	 0.5357	 0.2650
J	 0.6071	 0.3470
K	 0.6429	 0.3380

