



Full wwPDB EM Validation Report ⓘ

Jun 20, 2024 – 06:09 AM JST

PDB ID : 7X7A
EMDB ID : EMD-33040
Title : Cryo-EM structure of SbCas7-11 in complex with crRNA and target RNA
Authors : Yu, G.; Wang, X.; Deng, Z.; Zhang, H.
Deposited on : 2022-03-09
Resolution : 3.20 Å (reported)

This is a Full wwPDB EM Validation Report for a publicly released PDB entry.

We welcome your comments at validation@mail.wwpdb.org

A user guide is available at

<https://www.wwpdb.org/validation/2017/EMValidationReportHelp>

with specific help available everywhere you see the ⓘ symbol.

The types of validation reports are described at

<http://www.wwpdb.org/validation/2017/FAQs#types>.

The following versions of software and data (see [references ⓘ](#)) were used in the production of this report:

EMDB validation analysis : 0.0.1.dev92
MolProbity : 4.02b-467
Percentile statistics : 20191225.v01 (using entries in the PDB archive December 25th 2019)
MapQ : 1.9.13
Ideal geometry (proteins) : Engh & Huber (2001)
Ideal geometry (DNA, RNA) : Parkinson et al. (1996)
Validation Pipeline (wwPDB-VP) : 2.37.1

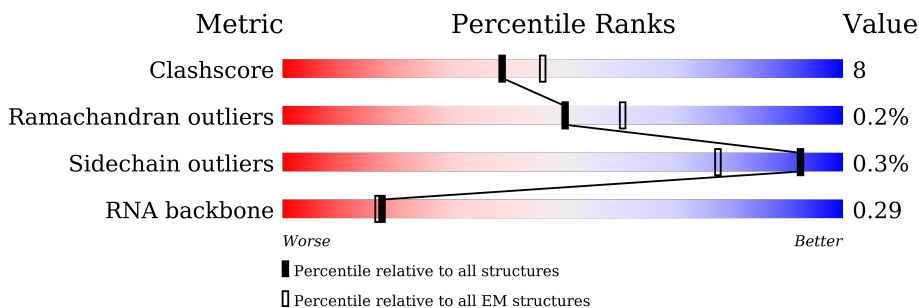
1 Overall quality at a glance

The following experimental techniques were used to determine the structure:

ELECTRON MICROSCOPY

The reported resolution of this entry is 3.20 Å.

Percentile scores (ranging between 0-100) for global validation metrics of the entry are shown in the following graphic. The table shows the number of entries on which the scores are based.



Metric	Whole archive (#Entries)	EM structures (#Entries)
Clashscore	158937	4297
Ramachandran outliers	154571	4023
Sidechain outliers	154315	3826
RNA backbone	4643	859

The table below summarises the geometric issues observed across the polymeric chains and their fit to the map. The red, orange, yellow and green segments of the bar indicate the fraction of residues that contain outliers for ≥ 3 , 2, 1 and 0 types of geometric quality criteria respectively. A grey segment represents the fraction of residues that are not modelled. The numeric value for each fraction is indicated below the corresponding segment, with a dot representing fractions $\leq 5\%$. The upper red bar (where present) indicates the fraction of residues that have poor fit to the EM map (all-atom inclusion $< 40\%$). The numeric value is given above the bar.

Mol	Chain	Length	Quality of chain
1	A	1722	
2	C	33	

2 Entry composition [i](#)

There are 3 unique types of molecules in this entry. The entry contains 10278 atoms, of which 0 are hydrogens and 0 are deuteriums.

In the tables below, the AltConf column contains the number of residues with at least one atom in alternate conformation and the Trace column contains the number of residues modelled with at most 2 atoms.

- Molecule 1 is a protein called RAMP superfamily protein.

Mol	Chain	Residues	Atoms					AltConf	Trace
			Total	C	N	O	S		
1	A	1241	9585	6127	1674	1753	31	0	0

There are 5 discrepancies between the modelled and reference sequences:

Chain	Residue	Modelled	Actual	Comment	Reference
A	1	MET	-	initiating methionine	UNP A0A0B0EGF3
A	2	LYS	-	expression tag	UNP A0A0B0EGF3
A	3	SER	-	expression tag	UNP A0A0B0EGF3
A	4	ASN	-	expression tag	UNP A0A0B0EGF3
A	5	ASP	-	expression tag	UNP A0A0B0EGF3

- Molecule 2 is a RNA chain called RNA (33-MER).

Mol	Chain	Residues	Atoms					AltConf	Trace
			Total	C	N	O	P		
2	C	33	689	309	113	234	33	0	0

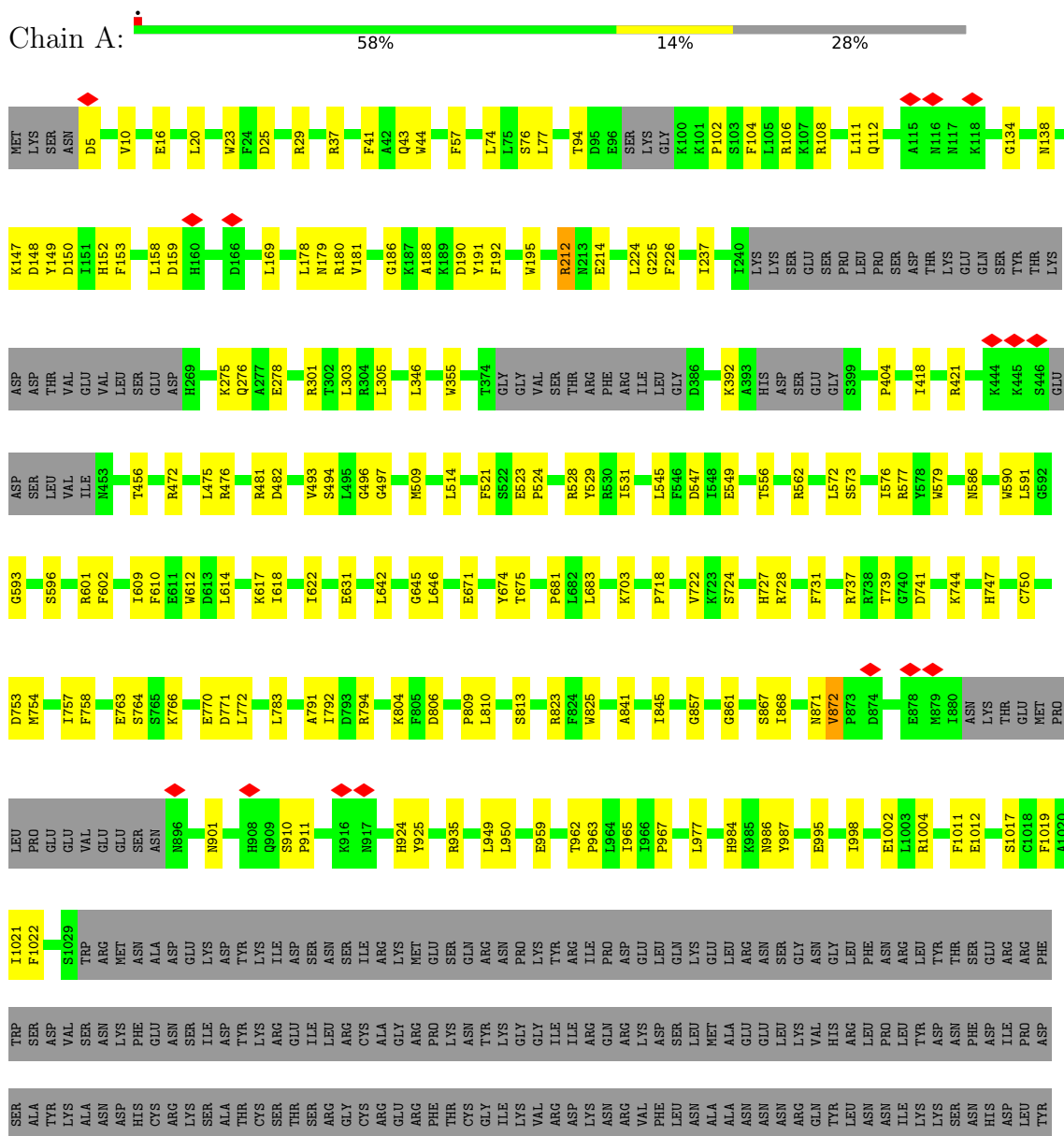
- Molecule 3 is ZINC ION (three-letter code: ZN) (formula: Zn) (labeled as "Ligand of Interest" by depositor).

Mol	Chain	Residues	Atoms		AltConf
3	A	4	Total	Zn	0
			4	4	

3 Residue-property plots

These plots are drawn for all protein, RNA, DNA and oligosaccharide chains in the entry. The first graphic for a chain summarises the proportions of the various outlier classes displayed in the second graphic. The second graphic shows the sequence view annotated by issues in geometry and atom inclusion in map density. Residues are color-coded according to the number of geometric quality criteria for which they contain at least one outlier: green = 0, yellow = 1, orange = 2 and red = 3 or more. A red diamond above a residue indicates a poor fit to the EM map for this residue (all-atom inclusion < 40%). Stretches of 2 or more consecutive residues without any outlier are shown as a green connector. Residues present in the sample, but not in the model, are shown in grey.

• Molecule 1: RAMP superfamily protein



LEU
GLN
TYR
LYS
GLY
GLU
LYS
ILE
ASN
ILE
PHE
LEU
ASN
ASP
LEU
ASN
LYS
VAL
ILE
THR
GLY
SER
GLU
ARG
SER
LEU
GLY
ALA
PRO
ASP
PRO
VAL
ILE
THR
ASN
LEU
GLU
ARG
GLY
THR
PHE
ASN
GLU
ARG
GLY
ASN
VAL
SER
PHE
ASP
GLY
THR
ILE
GLN
THR
GLY

ASN
SER
TRP
GLN
LYS
ARG
ALA
SER
GLU
ASP
ASN
ILE
LEU
LEU
ASN
ASP
ASP
GLU
LEU
VAL
THR
THR
ARG
GLY
THR
SER
PRO
GLN
LYS
SER
LEU
VAL
PRO
TYP
ILE
ASP
PRO
VAL
VAL
ILE
THR
LEU
THR
PHE
ASN
GLU
ARG
GLY
THR
ASN
GLN
ARG
GLY
THR
TYR
GLU
TYR
PHE
ASN
ILE
THR
LYS
THR
LYS
THR
GLY
THR
GLY
THR
PRO

VAL
ASP
ASP
GLN
ILE
CYS
LYS
ASN
TYR
GLU
ASP
ASP
ILE
LEU
ASP
ASP
TYP
THR
GLY
ILE
LYS
ASP
GLN
GLN
GLU
VAL
ALA
GLU
ARG
PHE
ASP
ASP
THR
THR
PHE
THR
ARG
GLY
SER
LYS
LEU
LEU
LYS
VAL
VAL
VAL
ASP
GLY
ASP
ASN
ASN
LYS
ILE
ASP
SER
LEU
ILE
PRO
VAL
ARG

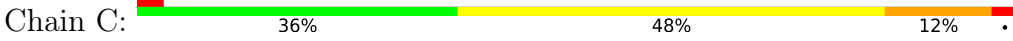
ILE
SER
ARG
LYS
ALA
SER
K1593
A1402
C1406
C1414
L1419
A1434
M1438
G1439
P1440
E1441
V1442
M1449
P1450
E1451
R1452
S1453
L1454
L1459
F1466
S1467
P1476
G1477
R1478
K1479
F1480
Y1481
L1482
M1485
Q1494
R1498
V1501
V1507
T1508
T1509
E1510
V1511
M1512

M1516
E1525
R1528
E1529
M1530
E1531
L1532
L1533
L1534
L1535
L1536
G1542
L1549
G1550
K1551
G1558
S1559
V1560
K1561
S1566
L1567
H1568
T1569
M1573
S1574
M1575
M1576
D1577
R1581
R1588
E1589
Y1590
T1591
M1592
K1593
G1594
K1587
L1598
G1603
ASN
ASN
SER
ILE
GLN
LYS
GLY
ASN
V1612

I1619
T1622
L1628
N1635
D1636
E1640
R1644
Y1645
P1646
V1647
L1648
M1649
E1650
K1653
G1654
TYR
ILE
GLU
GLY
SER
D1660
H1661
T1662
Y1663
S1686
N1689
PRO
PHE
GLN
VAL
ILE
ALA
GLU
HIS
GLU
GLN
GLU
VAL
ASN
VAL
THR
THR
GLY
SER
ARG
PRO
SER
VAL
THR
THR
ASP
LYS
ILE

GLU
ARG
ASP
GLY
LYS
MET
VAL

• Molecule 2: RNA (33-MER)



G-18
U-15
U-14
A-13
A-12
U-11
G-10
U-9
C-8
A-7
C-6
G-5
G-4
U-3
A-2
C-1
A3
A4
U5
U6
U10
C13
C14
C15

4 Experimental information

Property	Value	Source
EM reconstruction method	SINGLE PARTICLE	Depositor
Imposed symmetry	POINT, Not provided	
Number of particles used	225876	Depositor
Resolution determination method	FSC 0.143 CUT-OFF	Depositor
CTF correction method	PHASE FLIPPING ONLY	Depositor
Microscope	JEOL CRYO ARM 300	Depositor
Voltage (kV)	300	Depositor
Electron dose ($e^-/\text{\AA}^2$)	40	Depositor
Minimum defocus (nm)	500	Depositor
Maximum defocus (nm)	2500	Depositor
Magnification	Not provided	
Image detector	GATAN K3 (6k x 4k)	Depositor
Maximum map value	47.438	Depositor
Minimum map value	-30.717	Depositor
Average map value	-0.000	Depositor
Map value standard deviation	1.000	Depositor
Recommended contour level	5.7	Depositor
Map size (\AA)	284.9997, 284.9997, 284.9997	wwPDB
Map dimensions	300, 300, 300	wwPDB
Map angles ($^\circ$)	90.0, 90.0, 90.0	wwPDB
Pixel spacing (\AA)	0.949999, 0.949999, 0.949999	Depositor

5 Model quality [i](#)

5.1 Standard geometry [i](#)

Bond lengths and bond angles in the following residue types are not validated in this section:
ZN

The Z score for a bond length (or angle) is the number of standard deviations the observed value is removed from the expected value. A bond length (or angle) with $|Z| > 5$ is considered an outlier worth inspection. RMSZ is the root-mean-square of all Z scores of the bond lengths (or angles).

Mol	Chain	Bond lengths		Bond angles	
		RMSZ	# Z >5	RMSZ	# Z >5
1	A	0.25	0/9811	0.48	0/13286
2	C	0.20	0/766	0.76	1/1188 (0.1%)
All	All	0.24	0/10577	0.51	1/14474 (0.0%)

There are no bond length outliers.

All (1) bond angle outliers are listed below:

Mol	Chain	Res	Type	Atoms	Z	Observed(°)	Ideal(°)
2	C	5	U	P-O3'-C3'	5.05	125.77	119.70

There are no chirality outliers.

There are no planarity outliers.

5.2 Too-close contacts [i](#)

In the following table, the Non-H and H(model) columns list the number of non-hydrogen atoms and hydrogen atoms in the chain respectively. The H(added) column lists the number of hydrogen atoms added and optimized by MolProbity. The Clashes column lists the number of clashes within the asymmetric unit, whereas Symm-Clashes lists symmetry-related clashes.

Mol	Chain	Non-H	H(model)	H(added)	Clashes	Symm-Clashes
1	A	9585	0	9153	151	0
2	C	689	0	354	23	0
3	A	4	0	0	0	0
All	All	10278	0	9507	154	0

The all-atom clashscore is defined as the number of clashes found per 1000 atoms (including hydrogen atoms). The all-atom clashscore for this structure is 8.

All (154) close contacts within the same asymmetric unit are listed below, sorted by their clash magnitude.

Atom-1	Atom-2	Interatomic distance (Å)	Clash overlap (Å)
1:A:804:LYS:NZ	1:A:806:ASP:OD1	2.25	0.70
1:A:497:GLY:H	2:C:-5:G:H22	1.39	0.70
1:A:935:ARG:NH1	1:A:1406:CYS:SG	2.66	0.68
1:A:683:LEU:HB2	1:A:809:PRO:HB3	1.75	0.67
1:A:494:SER:O	2:C:-5:G:N2	2.26	0.67
1:A:1648:LEU:HA	1:A:1663:TYR:HB2	1.77	0.67
1:A:813:SER:OG	1:A:995:GLU:OE2	2.13	0.66
1:A:481:ARG:NH2	1:A:590:TRP:O	2.31	0.64
1:A:1619:ILE:HD12	1:A:1622:ILE:HD12	1.80	0.64
1:A:1534:LEU:HD11	1:A:1598:LEU:HD21	1.79	0.64
1:A:180:ARG:NH1	1:A:190:ASP:OD1	2.31	0.63
1:A:472:ARG:NH2	2:C:-6:C:OP2	2.27	0.62
1:A:763:GLU:OE2	1:A:766:LYS:NZ	2.30	0.61
1:A:108:ARG:HD3	2:C:-8:C:H5'	1.83	0.61
1:A:1440:PRO:O	1:A:1516:ASN:ND2	2.35	0.60
1:A:1466:PHE:HB2	2:C:15:C:H5'	1.84	0.60
1:A:301:ARG:NH1	1:A:549:GLU:OE2	2.35	0.60
1:A:586:ASN:O	1:A:601:ARG:NH1	2.35	0.59
1:A:1011:PHE:HE1	1:A:1534:LEU:HB3	1.68	0.59
1:A:147:LYS:O	1:A:212:ARG:NH1	2.36	0.58
1:A:562:ARG:NH2	1:A:631:GLU:OE2	2.35	0.58
1:A:1588:ARG:O	1:A:1592:ASN:ND2	2.30	0.57
1:A:23:TRP:HB2	1:A:43:GLN:HB3	1.86	0.57
1:A:531:ILE:O	2:C:3:A:O2'	2.23	0.57
1:A:276:GLN:HG3	1:A:346:LEU:HD21	1.87	0.57
1:A:41:PHE:O	1:A:43:GLN:NE2	2.38	0.56
1:A:224:LEU:HD22	1:A:237:ILE:HG21	1.88	0.56
1:A:112:GLN:HE21	1:A:404:PRO:HB3	1.70	0.56
1:A:481:ARG:HH22	1:A:590:TRP:HB2	1.71	0.56
1:A:925:TYR:HD2	1:A:1482:LEU:HD21	1.71	0.56
1:A:681:PRO:O	1:A:861:GLY:N	2.39	0.56
1:A:1019:PHE:HB3	1:A:1022:PHE:HB2	1.88	0.56
1:A:747:HIS:HD1	1:A:750:CYS:HB3	1.72	0.55
1:A:1017:SER:HB2	1:A:1414:CYS:HB3	1.88	0.55
1:A:1566:SER:HB2	1:A:1581:ARG:HH21	1.71	0.55
1:A:528:ARG:NH2	1:A:771:ASP:OD2	2.33	0.55
1:A:965:ILE:HG12	1:A:1511:VAL:HG12	1.89	0.54
1:A:225:GLY:HA3	1:A:622:ILE:HG23	1.88	0.54
1:A:744:LYS:NZ	1:A:750:CYS:SG	2.74	0.54
1:A:1536:LEU:HD21	1:A:1567:LEU:HD22	1.89	0.54

Continued on next page...

Continued from previous page...

Atom-1	Atom-2	Interatomic distance (Å)	Clash overlap (Å)
1:A:5:ASP:N	1:A:214:GLU:OE2	2.41	0.54
1:A:275:LYS:O	1:A:278:GLU:HG3	2.08	0.54
1:A:1002:GLU:HG2	1:A:1549:LEU:HD11	1.88	0.54
1:A:94:THR:HG21	1:A:102:PRO:HD3	1.89	0.53
1:A:476:ARG:NH2	1:A:509:MET:O	2.42	0.52
1:A:1467:SER:HB3	1:A:1476:PRO:HG2	1.92	0.51
1:A:25:ASP:O	1:A:29:ARG:HB2	2.10	0.51
1:A:935:ARG:NH2	1:A:1402:ALA:O	2.43	0.51
1:A:724:SER:N	1:A:771:ASP:OD1	2.43	0.51
1:A:1650:GLU:H	1:A:1653:LYS:HD2	1.76	0.51
1:A:149:TYR:HB2	1:A:152:HIS:HB2	1.93	0.51
1:A:531:ILE:HG22	2:C:4:A:H3'	1.93	0.51
1:A:739:THR:HG23	1:A:741:ASP:H	1.76	0.51
1:A:967:PRO:HG3	1:A:1551:LYS:HE3	1.92	0.51
1:A:138:ASN:HB3	1:A:148:ASP:HB3	1.92	0.50
1:A:573:SER:O	1:A:577:ARG:HG2	2.12	0.50
1:A:43:GLN:HB2	1:A:57:PHE:CE1	2.46	0.50
1:A:794:ARG:NH2	2:C:10:U:OP2	2.44	0.50
1:A:841:ALA:O	1:A:845:ILE:HG12	2.12	0.50
2:C:5:U:O2'	2:C:6:U:OP2	2.27	0.50
1:A:987:TYR:HB2	1:A:1509:THR:HG22	1.93	0.50
1:A:998:ILE:HB	1:A:1434:ALA:HB3	1.94	0.49
1:A:1530:TRP:HB2	1:A:1594:GLY:HA2	1.93	0.49
1:A:186:GLY:O	2:C:-1:C:O2'	2.21	0.49
1:A:1480:PHE:HB2	1:A:1628:LEU:HD13	1.95	0.49
1:A:674:TYR:HH	1:A:727:HIS:HE2	1.58	0.49
1:A:857:GLY:O	1:A:1004:ARG:NH1	2.46	0.49
1:A:106:ARG:HB2	2:C:-10:G:H1'	1.94	0.49
1:A:181:VAL:HA	1:A:188:ALA:HA	1.95	0.49
1:A:158:LEU:HG	1:A:159:ASP:H	1.78	0.48
1:A:1449:ASN:OD1	1:A:1498:ARG:NH1	2.46	0.48
1:A:753:ASP:O	1:A:757:ILE:HG12	2.13	0.48
1:A:984:HIS:NE2	1:A:1508:THR:OG1	2.40	0.48
1:A:150:ASP:HA	1:A:212:ARG:HB2	1.95	0.48
1:A:44:TRP:CE2	1:A:169:LEU:HD12	2.49	0.48
1:A:791:ALA:HB1	1:A:1021:ILE:HG21	1.95	0.48
1:A:421:ARG:HE	1:A:556:THR:HB	1.79	0.48
1:A:547:ASP:N	1:A:547:ASP:OD1	2.47	0.48
1:A:1012:GLU:OE1	1:A:1478:ARG:NH2	2.46	0.48
1:A:792:ILE:HD12	2:C:10:U:C2	2.48	0.48
1:A:871:ASN:O	1:A:872:VAL:HB	2.14	0.48

Continued on next page...

Continued from previous page...

Atom-1	Atom-2	Interatomic distance (Å)	Clash overlap (Å)
1:A:392:LYS:HB2	1:A:496:GLY:HA3	1.95	0.48
2:C:-7:A:H4'	2:C:-6:C:H5''	1.96	0.47
1:A:770:GLU:OE1	1:A:823:ARG:NH1	2.46	0.47
1:A:1451:GLU:C	1:A:1452:ARG:HD3	2.35	0.47
1:A:482:ASP:OD2	1:A:579:TRP:NE1	2.36	0.47
1:A:612:TRP:CE2	1:A:646:LEU:HD12	2.48	0.47
1:A:671:GLU:HB3	1:A:825:TRP:CZ3	2.49	0.47
1:A:722:VAL:HB	1:A:772:LEU:HB2	1.97	0.47
1:A:618:ILE:O	1:A:622:ILE:HD12	2.15	0.47
1:A:456:THR:OG1	1:A:545:LEU:O	2.32	0.47
1:A:1419:LEU:HD11	1:A:1531:GLU:HG2	1.97	0.47
1:A:642:LEU:HD22	1:A:646:LEU:HD22	1.97	0.46
1:A:754:MET:O	1:A:758:PHE:HB2	2.16	0.46
1:A:153:PHE:HB2	2:C:-12:A:H61	1.81	0.46
1:A:963:PRO:O	1:A:1558:GLY:N	2.49	0.46
1:A:1485:ASN:ND2	1:A:1640:GLU:OE2	2.48	0.46
1:A:1644:ARG:O	1:A:1661:TYR:OH	2.27	0.46
1:A:674:TYR:OH	1:A:727:HIS:NE2	2.48	0.46
1:A:763:GLU:HG2	1:A:764:SER:H	1.81	0.46
1:A:737:ARG:NH2	1:A:1525:GLU:OE1	2.50	0.45
1:A:675:THR:OG1	1:A:867:SER:OG	2.34	0.45
1:A:1441:GLU:HG3	1:A:1442:TRP:CD1	2.52	0.45
1:A:1441:GLU:O	1:A:1512:MET:HG2	2.17	0.45
1:A:305:LEU:HD23	1:A:524:PRO:HG2	1.99	0.45
1:A:596:SER:HB2	1:A:728:ARG:HH12	1.82	0.45
1:A:1438:ASN:OD1	1:A:1439:GLY:N	2.46	0.45
1:A:1646:PRO:HG2	1:A:1663:TYR:CE2	2.52	0.45
1:A:591:LEU:HB2	1:A:602:PHE:CD1	2.52	0.44
1:A:910:SER:N	1:A:911:PRO:HD2	2.32	0.44
1:A:418:ILE:HG12	1:A:609:ILE:HG12	1.99	0.44
1:A:179:ASN:ND2	1:A:191:TYR:HB3	2.32	0.44
1:A:178:LEU:HB2	1:A:192:PHE:CE1	2.53	0.44
1:A:703:LYS:HB2	1:A:718:PRO:HB2	1.99	0.44
1:A:617:LYS:HG3	1:A:645:GLY:HA2	1.98	0.43
1:A:731:PHE:CE1	1:A:845:ILE:HG13	2.53	0.43
1:A:1459:LEU:HD22	2:C:13:C:H2'	1.99	0.43
1:A:959:GLU:O	1:A:1561:LYS:N	2.37	0.43
1:A:674:TYR:HB3	1:A:868:ILE:HA	2.01	0.43
1:A:962:THR:OG1	1:A:1559:SER:N	2.50	0.43
1:A:76:SER:CB	1:A:111:LEU:HD23	2.49	0.43
1:A:475:LEU:HG	1:A:514:LEU:HD22	2.00	0.43

Continued on next page...

Continued from previous page...

Atom-1	Atom-2	Interatomic distance (Å)	Clash overlap (Å)
1:A:104:PHE:O	2:C:-10:G:O2'	2.28	0.43
1:A:572:LEU:O	1:A:576:ILE:HG12	2.18	0.43
1:A:593:GLY:HA2	2:C:-1:C:H5''	2.01	0.42
1:A:1530:TRP:NE1	1:A:1597:LYS:HE3	2.35	0.42
1:A:16:GLU:OE2	2:C:-6:C:N4	2.52	0.42
1:A:925:TYR:OH	1:A:1686:SER:O	2.32	0.42
1:A:950:LEU:HD12	1:A:1569:THR:HG21	2.00	0.42
1:A:106:ARG:HH21	1:A:108:ARG:NH2	2.17	0.42
1:A:925:TYR:HE2	1:A:1482:LEU:HD11	1.84	0.42
1:A:74:LEU:HD21	1:A:226:PHE:CD1	2.54	0.42
1:A:529:TYR:CD1	1:A:545:LEU:HD11	2.54	0.42
1:A:610:PHE:HB3	1:A:646:LEU:HD21	1.99	0.42
1:A:949:LEU:HD22	1:A:1528:ARG:HG2	2.00	0.42
1:A:924:HIS:CD2	1:A:1479:LYS:HE2	2.55	0.42
1:A:10:VAL:HG13	1:A:237:ILE:HG23	2.02	0.42
1:A:493:VAL:HG11	2:C:-4:G:H5'	2.02	0.42
1:A:521:PHE:CZ	1:A:523:GLU:HG3	2.55	0.42
1:A:20:LEU:HD12	1:A:195:TRP:HE3	1.85	0.41
1:A:77:LEU:HD13	1:A:614:LEU:HB3	2.02	0.41
1:A:303:LEU:HG	1:A:355:TRP:HZ2	1.85	0.41
1:A:1507:VAL:HG22	1:A:1509:THR:HG23	2.01	0.41
1:A:901:ASN:HB3	1:A:1542:GLY:HA2	2.01	0.41
2:C:-2:A:H1'	2:C:-1:C:H5	1.86	0.41
1:A:783:LEU:HG	1:A:810:LEU:HD22	2.03	0.41
1:A:1002:GLU:HG3	2:C:10:U:H1'	2.03	0.41
1:A:1454:LEU:HG	1:A:1494:GLN:HE21	1.86	0.41
1:A:1532:LEU:HD22	1:A:1590:TYR:CD1	2.56	0.41
1:A:5:ASP:N	1:A:5:ASP:OD1	2.53	0.40
1:A:106:ARG:HE	1:A:108:ARG:CZ	2.34	0.40
1:A:531:ILE:O	2:C:4:A:H5'	2.20	0.40
1:A:977:LEU:HB2	1:A:986:ASN:ND2	2.36	0.40
1:A:134:GLY:O	2:C:-11:U:H5'	2.21	0.40

There are no symmetry-related clashes.

5.3 Torsion angles [i](#)

5.3.1 Protein backbone [i](#)

In the following table, the Percentiles column shows the percent Ramachandran outliers of the chain as a percentile score with respect to all PDB entries followed by that with respect to all EM

entries.

The Analysed column shows the number of residues for which the backbone conformation was analysed, and the total number of residues.

Mol	Chain	Analysed	Favoured	Allowed	Outliers	Percentiles
1	A	1221/1722 (71%)	1157 (95%)	62 (5%)	2 (0%)	47 79

All (2) Ramachandran outliers are listed below:

Mol	Chain	Res	Type
1	A	872	VAL
1	A	1501	VAL

5.3.2 Protein sidechains [i](#)

In the following table, the Percentiles column shows the percent sidechain outliers of the chain as a percentile score with respect to all PDB entries followed by that with respect to all EM entries.

The Analysed column shows the number of residues for which the sidechain conformation was analysed, and the total number of residues.

Mol	Chain	Analysed	Rotameric	Outliers	Percentiles
1	A	967/1525 (63%)	964 (100%)	3 (0%)	92 96

All (3) residues with a non-rotameric sidechain are listed below:

Mol	Chain	Res	Type
1	A	37	ARG
1	A	212	ARG
1	A	1452	ARG

Sometimes sidechains can be flipped to improve hydrogen bonding and reduce clashes. All (2) such sidechains are listed below:

Mol	Chain	Res	Type
1	A	89	ASN
1	A	112	GLN

5.3.3 RNA [i](#)

Mol	Chain	Analysed	Backbone Outliers	Pucker Outliers
2	C	32/33 (96%)	9 (28%)	1 (3%)

All (9) RNA backbone outliers are listed below:

Mol	Chain	Res	Type
2	C	-15	U
2	C	-13	A
2	C	-9	U
2	C	-5	G
2	C	3	A
2	C	5	U
2	C	6	U
2	C	14	C
2	C	15	C

All (1) RNA pucker outliers are listed below:

Mol	Chain	Res	Type
2	C	5	U

5.4 Non-standard residues in protein, DNA, RNA chains [i](#)

There are no non-standard protein/DNA/RNA residues in this entry.

5.5 Carbohydrates [i](#)

There are no monosaccharides in this entry.

5.6 Ligand geometry [i](#)

Of 4 ligands modelled in this entry, 4 are monoatomic - leaving 0 for Mogul analysis.

There are no bond length outliers.

There are no bond angle outliers.

There are no chirality outliers.

There are no torsion outliers.

There are no ring outliers.

No monomer is involved in short contacts.

5.7 Other polymers [i](#)

There are no such residues in this entry.

5.8 Polymer linkage issues [i](#)

There are no chain breaks in this entry.

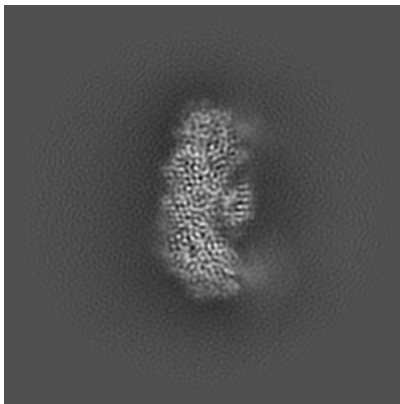
6 Map visualisation [i](#)

This section contains visualisations of the EMDB entry EMD-33040. These allow visual inspection of the internal detail of the map and identification of artifacts.

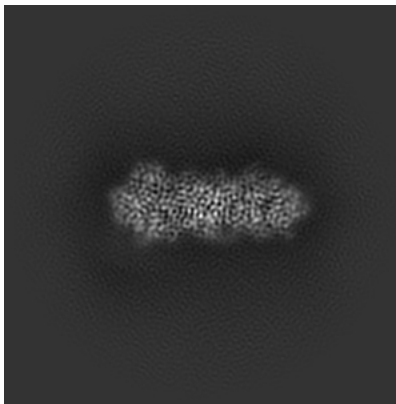
Images derived from a raw map, generated by summing the deposited half-maps, are presented below the corresponding image components of the primary map to allow further visual inspection and comparison with those of the primary map.

6.1 Orthogonal projections [i](#)

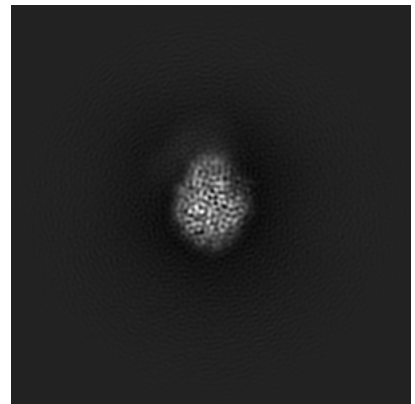
6.1.1 Primary map



X

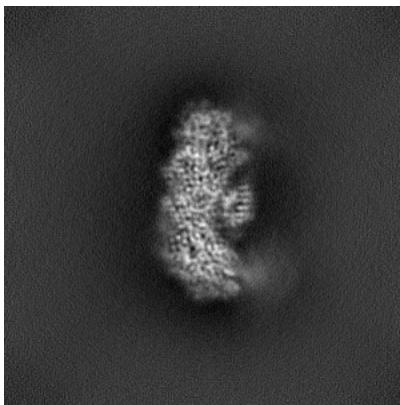


Y

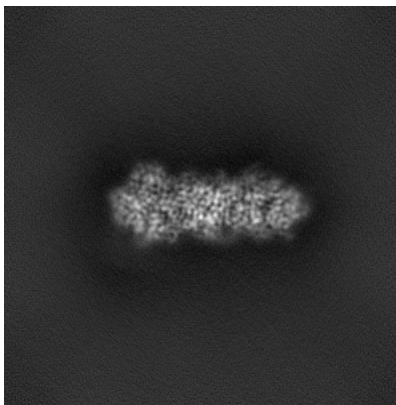


Z

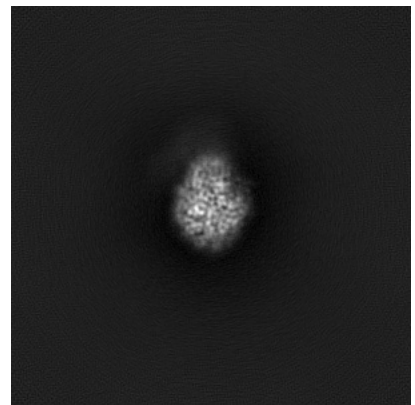
6.1.2 Raw map



X



Y

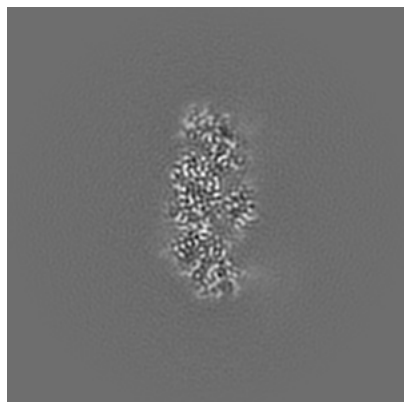


Z

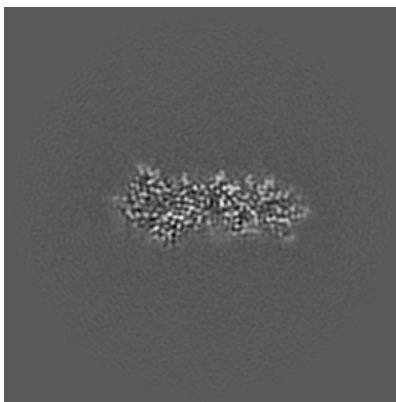
The images above show the map projected in three orthogonal directions.

6.2 Central slices [i](#)

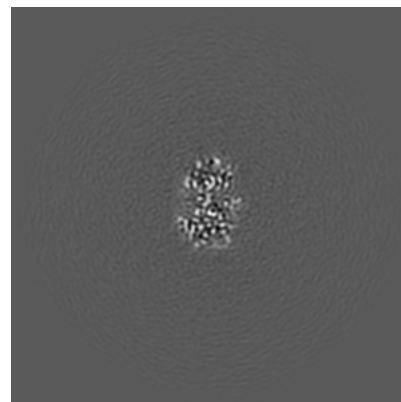
6.2.1 Primary map



X Index: 150

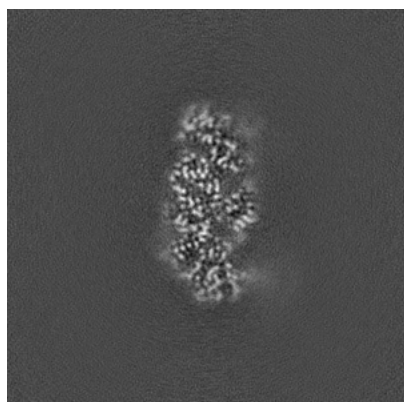


Y Index: 150

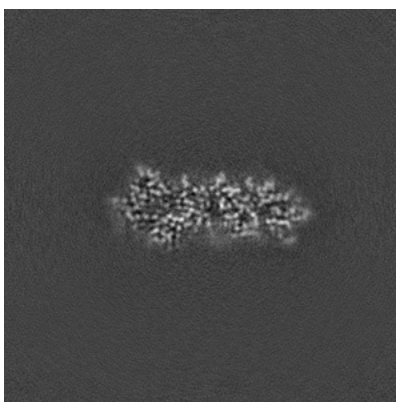


Z Index: 150

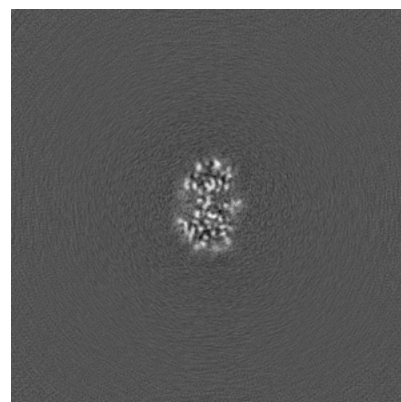
6.2.2 Raw map



X Index: 150



Y Index: 150

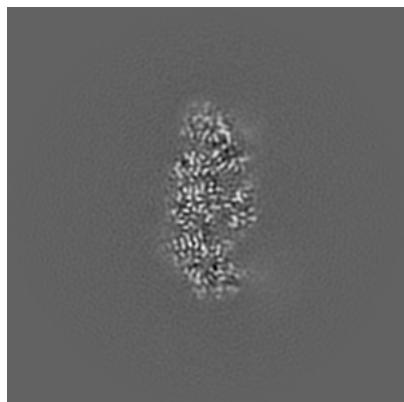


Z Index: 150

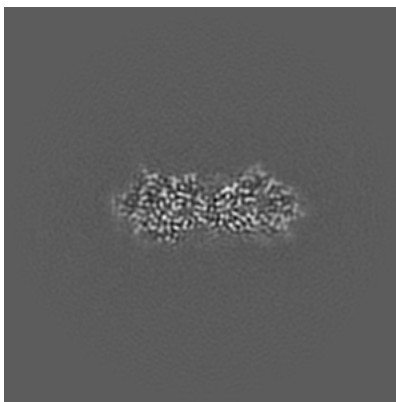
The images above show central slices of the map in three orthogonal directions.

6.3 Largest variance slices [i](#)

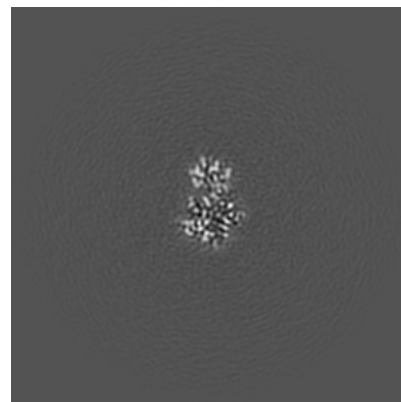
6.3.1 Primary map



X Index: 148

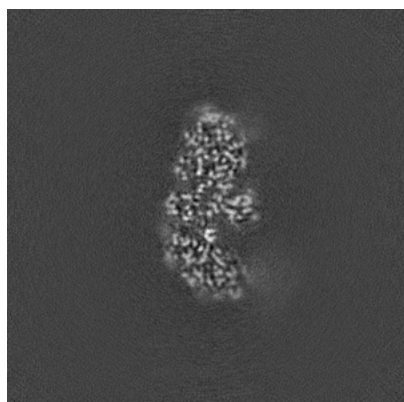


Y Index: 145

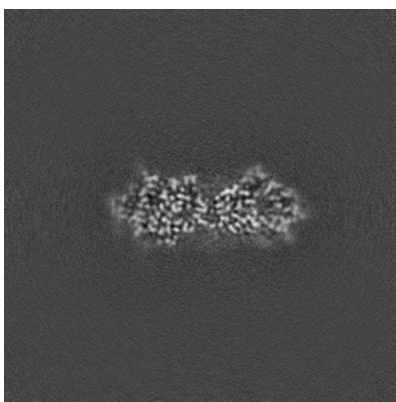


Z Index: 143

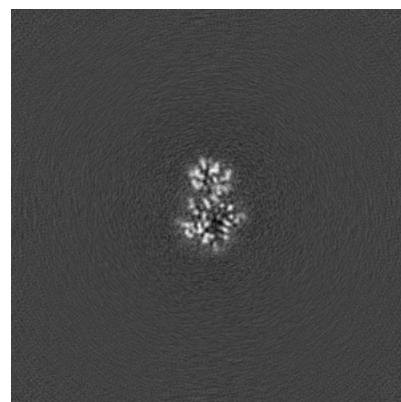
6.3.2 Raw map



X Index: 142



Y Index: 145

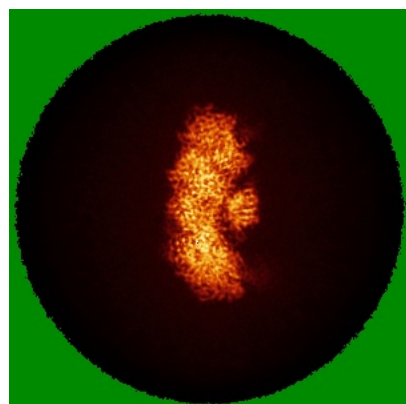


Z Index: 143

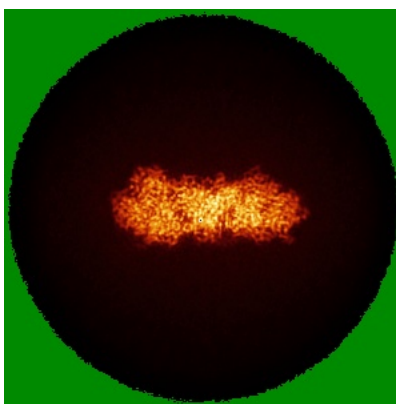
The images above show the largest variance slices of the map in three orthogonal directions.

6.4 Orthogonal standard-deviation projections (False-color) [i](#)

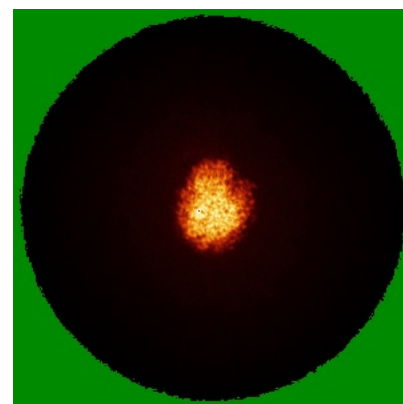
6.4.1 Primary map



X

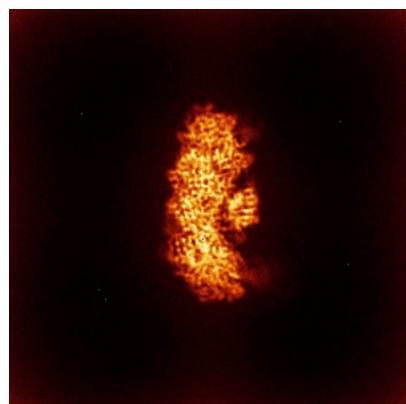


Y

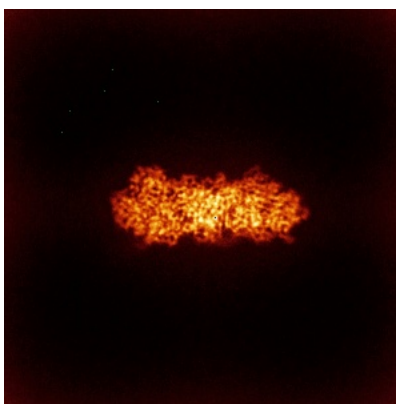


Z

6.4.2 Raw map



X



Y

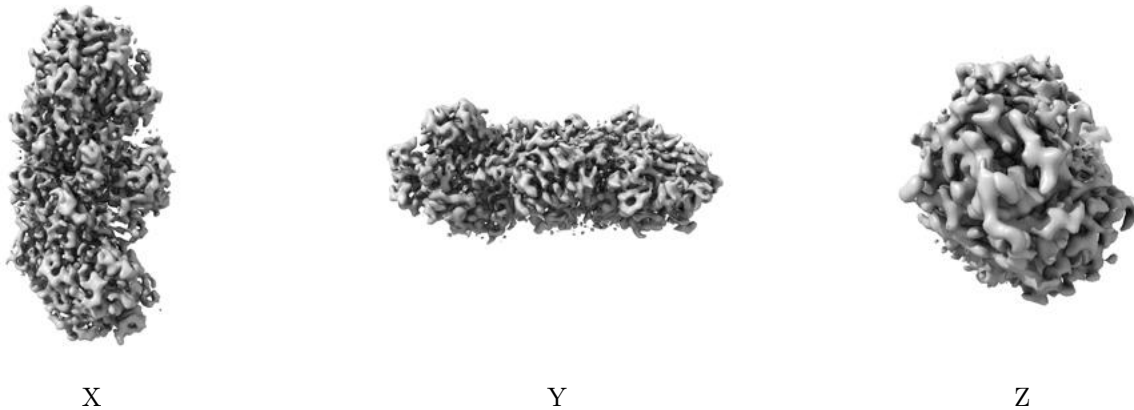


Z

The images above show the map standard deviation projections with false color in three orthogonal directions. Minimum values are shown in green, max in blue, and dark to light orange shades represent small to large values respectively.

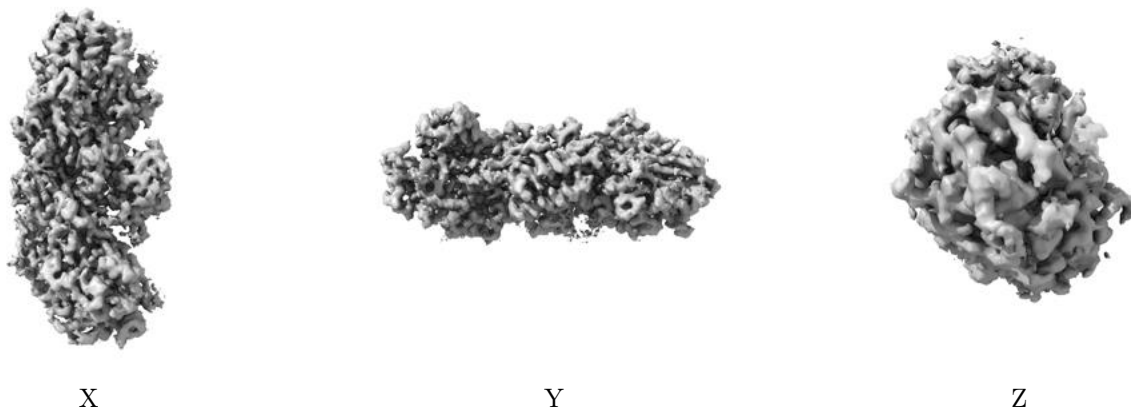
6.5 Orthogonal surface views [i](#)

6.5.1 Primary map



The images above show the 3D surface view of the map at the recommended contour level 5.7. These images, in conjunction with the slice images, may facilitate assessment of whether an appropriate contour level has been provided.

6.5.2 Raw map



These images show the 3D surface of the raw map. The raw map's contour level was selected so that its surface encloses the same volume as the primary map does at its recommended contour level.

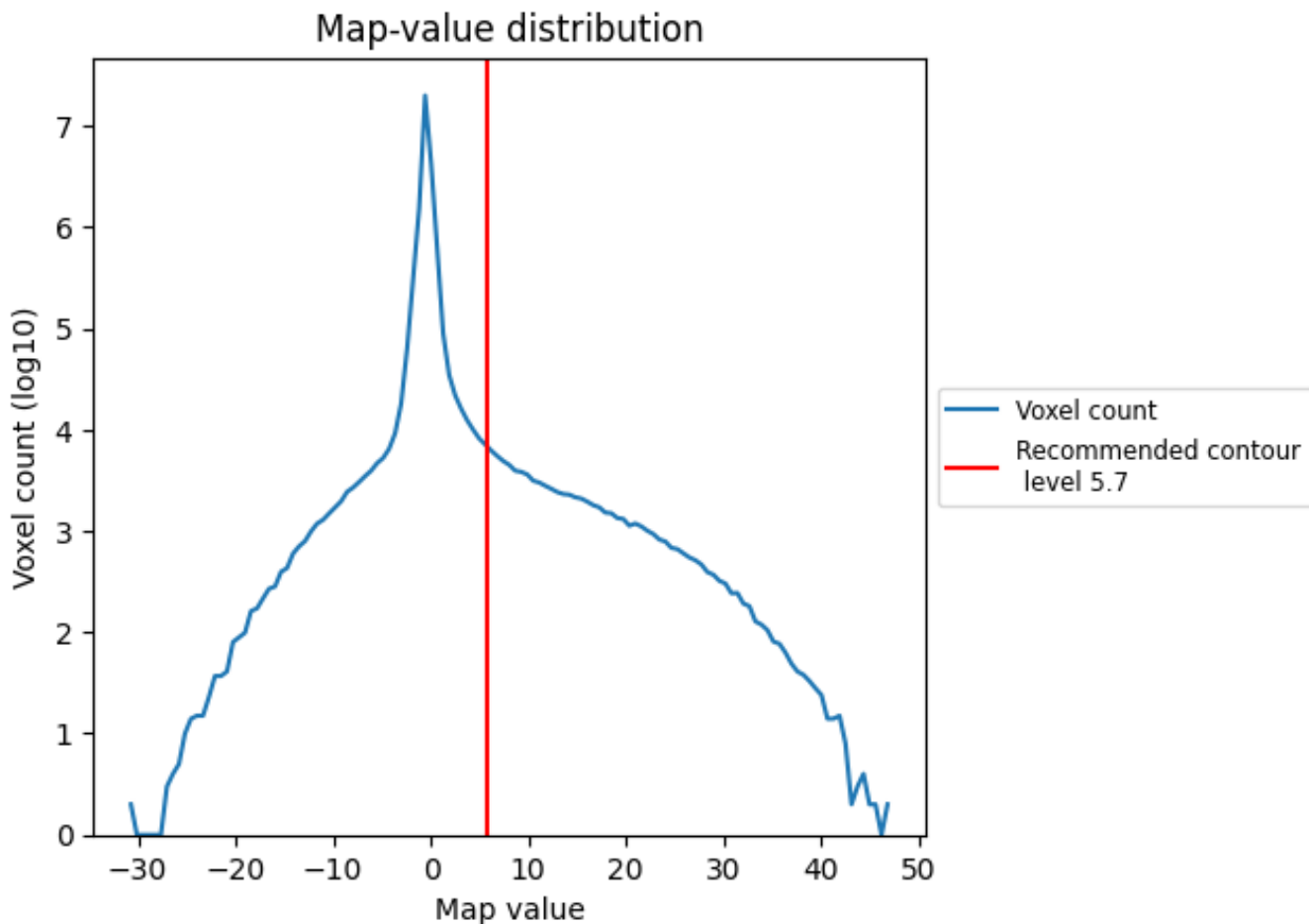
6.6 Mask visualisation [i](#)

This section was not generated. No masks/segmentation were deposited.

7 Map analysis [i](#)

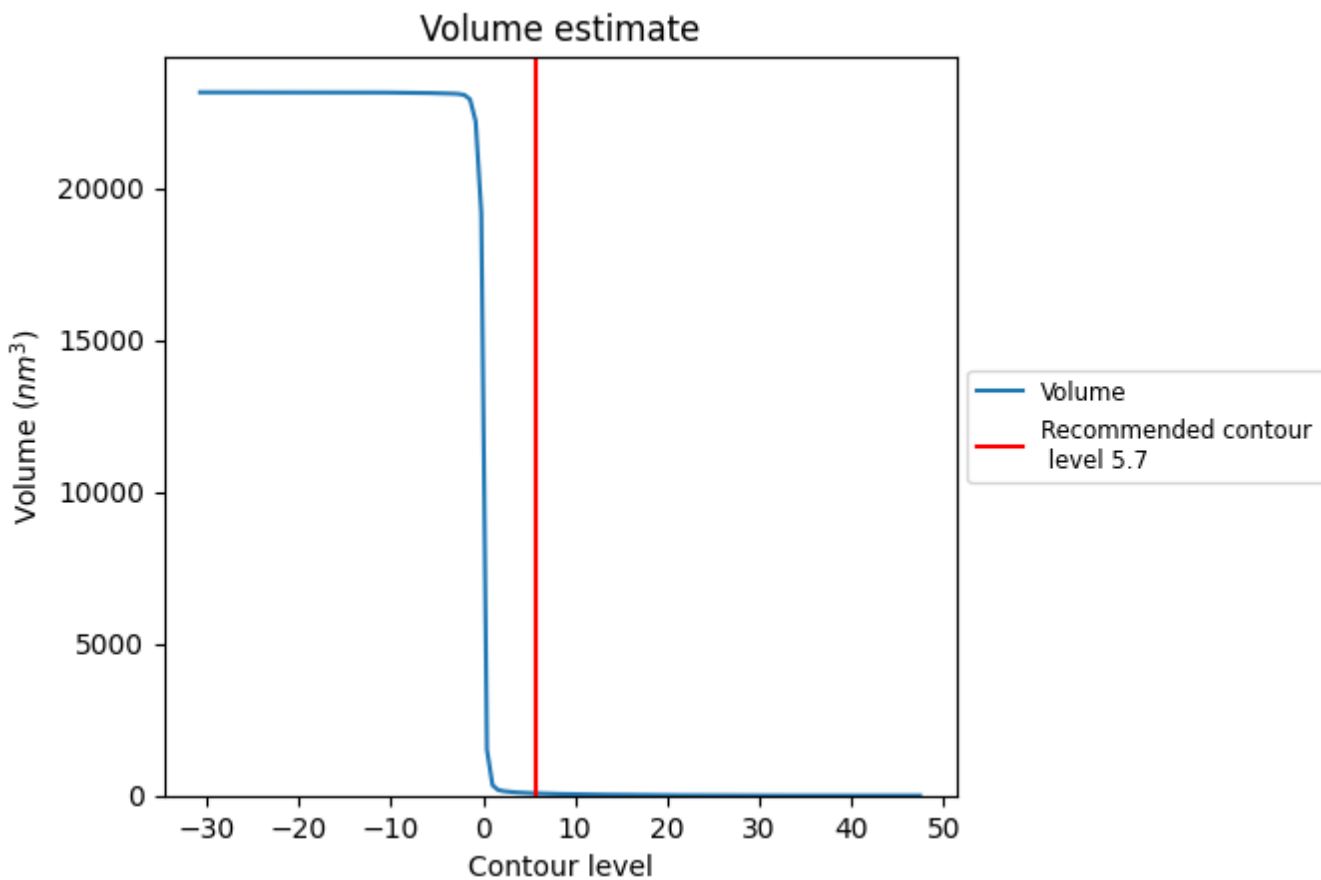
This section contains the results of statistical analysis of the map.

7.1 Map-value distribution [i](#)



The map-value distribution is plotted in 128 intervals along the x-axis. The y-axis is logarithmic. A spike in this graph at zero usually indicates that the volume has been masked.

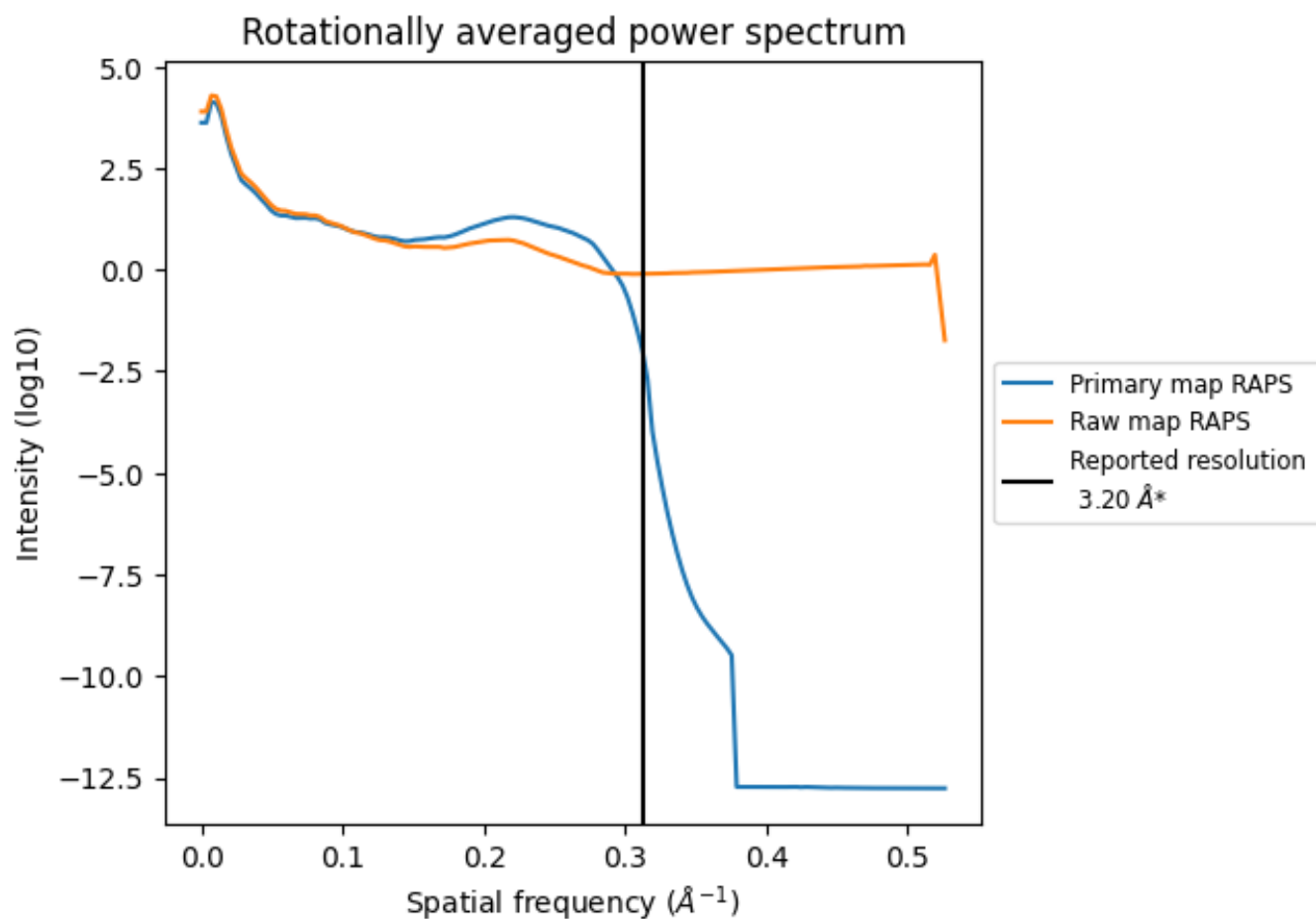
7.2 Volume estimate [i](#)



The volume at the recommended contour level is 74 nm³; this corresponds to an approximate mass of 67 kDa.

The volume estimate graph shows how the enclosed volume varies with the contour level. The recommended contour level is shown as a vertical line and the intersection between the line and the curve gives the volume of the enclosed surface at the given level.

7.3 Rotationally averaged power spectrum [i](#)

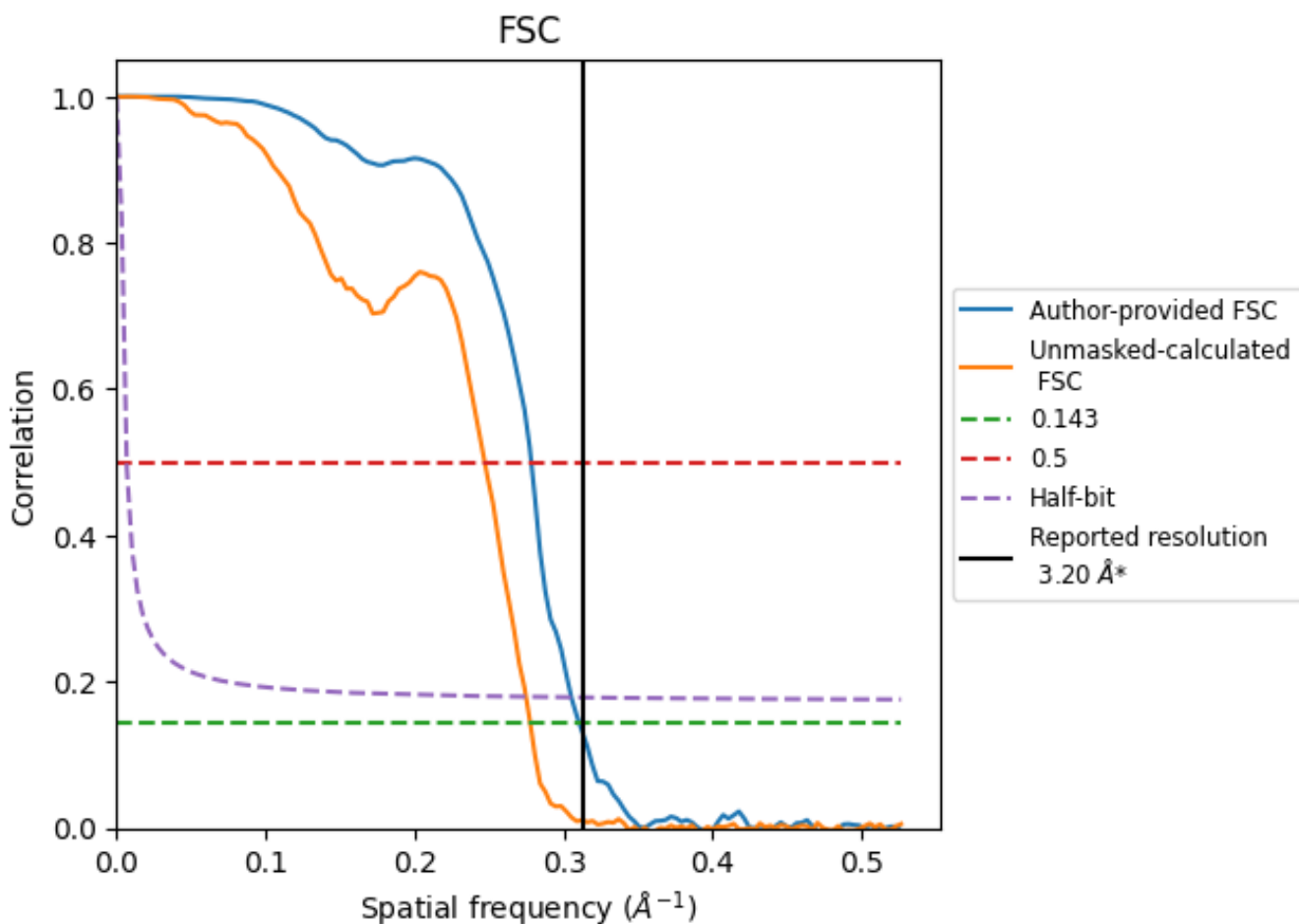


*Reported resolution corresponds to spatial frequency of 0.312 Å⁻¹

8 Fourier-Shell correlation [i](#)

Fourier-Shell Correlation (FSC) is the most commonly used method to estimate the resolution of single-particle and subtomogram-averaged maps. The shape of the curve depends on the imposed symmetry, mask and whether or not the two 3D reconstructions used were processed from a common reference. The reported resolution is shown as a black line. A curve is displayed for the half-bit criterion in addition to lines showing the 0.143 gold standard cut-off and 0.5 cut-off.

8.1 FSC [i](#)



*Reported resolution corresponds to spatial frequency of 0.312 Å⁻¹

8.2 Resolution estimates [i](#)

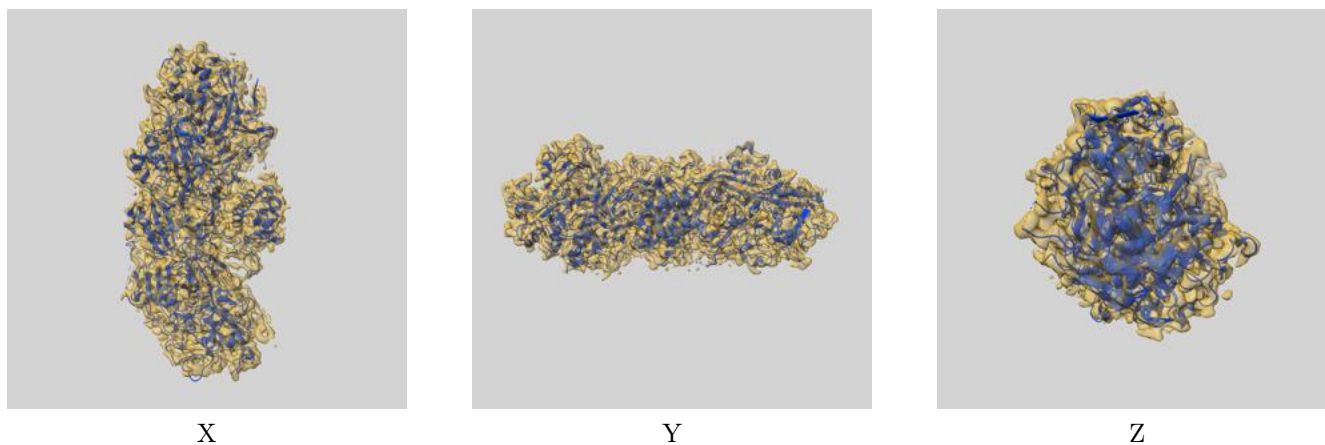
Resolution estimate (Å)	Estimation criterion (FSC cut-off)		
	0.143	0.5	Half-bit
Reported by author	3.20	-	-
Author-provided FSC curve	3.22	3.59	3.28
Unmasked-calculated*	3.60	4.05	3.64

*Resolution estimate based on FSC curve calculated by comparison of deposited half-maps. The value from deposited half-maps intersecting FSC 0.143 CUT-OFF 3.60 differs from the reported value 3.2 by more than 10 %

9 Map-model fit [i](#)

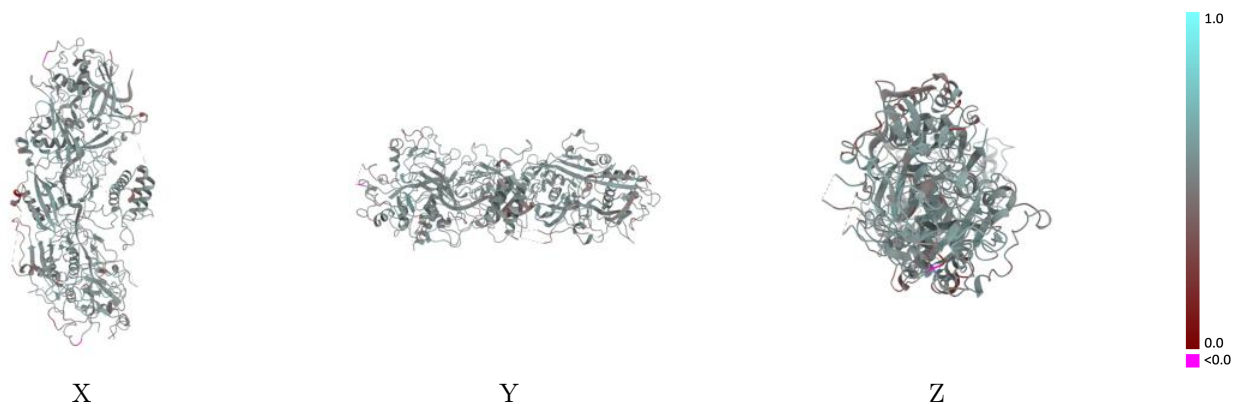
This section contains information regarding the fit between EMDB map EMD-33040 and PDB model 7X7A. Per-residue inclusion information can be found in section 3 on page 4.

9.1 Map-model overlay [i](#)



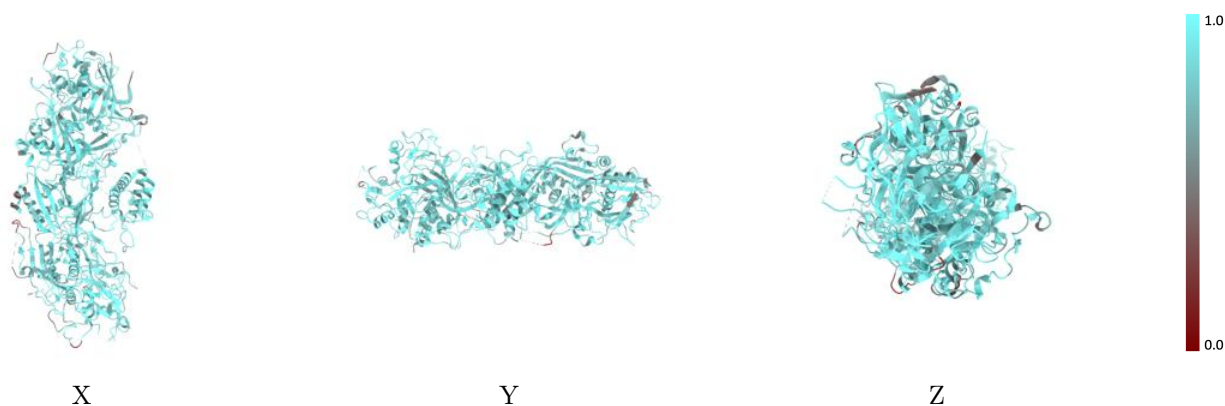
The images above show the 3D surface view of the map at the recommended contour level 5.7 at 50% transparency in yellow overlaid with a ribbon representation of the model coloured in blue. These images allow for the visual assessment of the quality of fit between the atomic model and the map.

9.2 Q-score mapped to coordinate model [\(i\)](#)



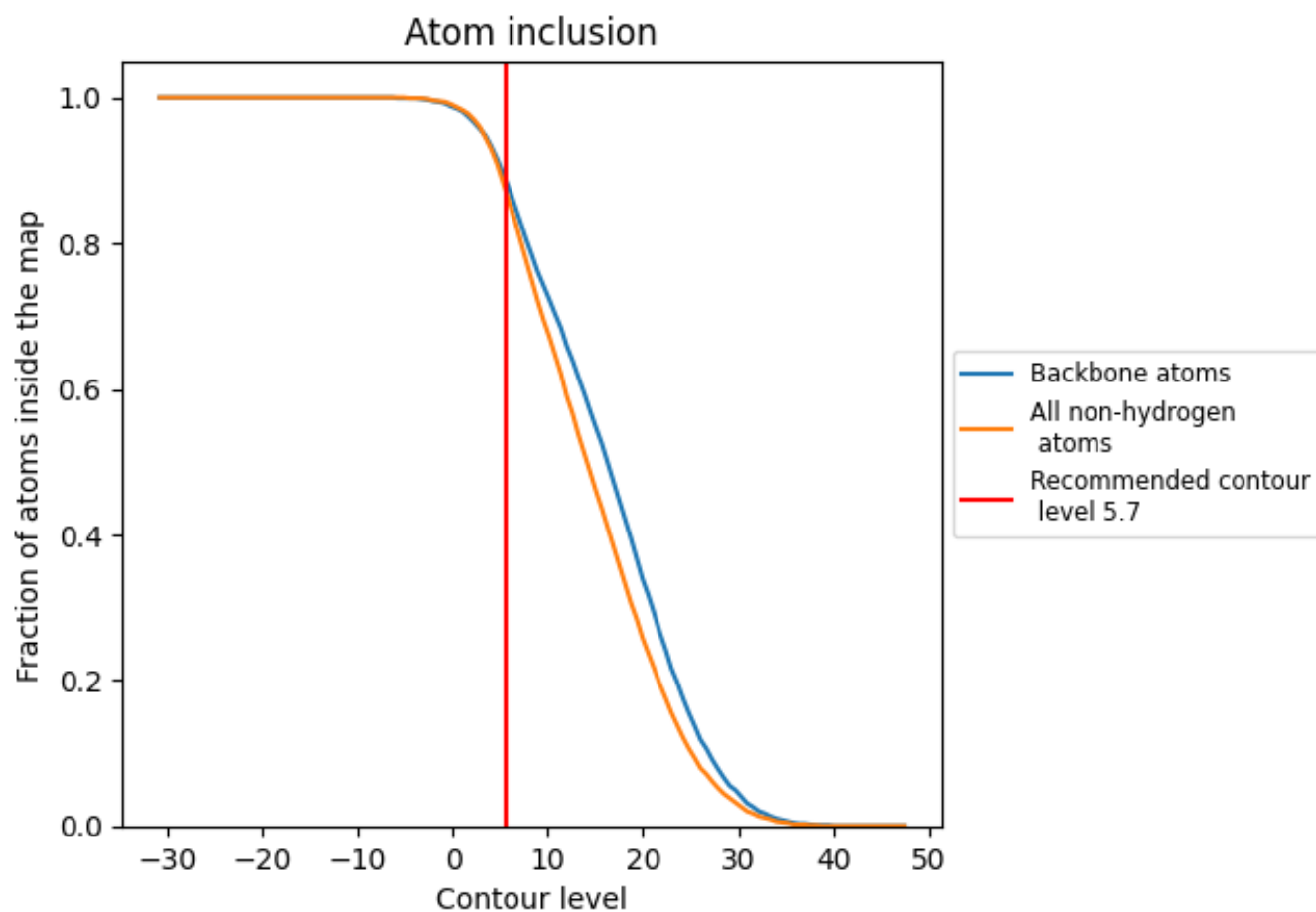
The images above show the model with each residue coloured according to its Q-score. This shows their resolvability in the map with higher Q-score values reflecting better resolvability. Please note: Q-score is calculating the resolvability of atoms, and thus high values are only expected at resolutions at which atoms can be resolved. Low Q-score values may therefore be expected for many entries.

9.3 Atom inclusion mapped to coordinate model [\(i\)](#)



The images above show the model with each residue coloured according to its atom inclusion. This shows to what extent they are inside the map at the recommended contour level (5.7).

9.4 Atom inclusion [i](#)



At the recommended contour level, 88% of all backbone atoms, 87% of all non-hydrogen atoms, are inside the map.

9.5 Map-model fit summary

The table lists the average atom inclusion at the recommended contour level (5.7) and Q-score for the entire model and for each chain.

Chain	Atom inclusion	Q-score
All	 0.8680	 0.5230
A	 0.8680	 0.5240
C	 0.8720	 0.5020

