



## Full wwPDB EM Validation Report ⓘ

Oct 25, 2023 – 10:24 PM EDT

PDB ID : 8DN5  
EMDB ID : EMD-27555  
Title : Cryo-EM structure of human Glycine Receptor alpha1-beta heteromer, glycine-bound state1(open state)  
Authors : Liu, X.; Wang, W.  
Deposited on : 2022-07-10  
Resolution : 3.63 Å(reported)  
Based on initial model : 7MLY

This is a Full wwPDB EM Validation Report for a publicly released PDB entry.

We welcome your comments at [validation@mail.wwpdb.org](mailto:validation@mail.wwpdb.org)

A user guide is available at

<https://www.wwpdb.org/validation/2017/EMValidationReportHelp>

with specific help available everywhere you see the ⓘ symbol.

The types of validation reports are described at

<http://www.wwpdb.org/validation/2017/FAQs#types>.

---

The following versions of software and data (see [references ⓘ](#)) were used in the production of this report:

EMDB validation analysis : 0.0.1.dev70  
Mogul : 1.8.5 (274361), CSD as541be (2020)  
MolProbity : 4.02b-467  
Percentile statistics : 20191225.v01 (using entries in the PDB archive December 25th 2019)  
MapQ : 1.9.9  
Ideal geometry (proteins) : Engh & Huber (2001)  
Ideal geometry (DNA, RNA) : Parkinson et al. (1996)  
Validation Pipeline (wwPDB-VP) : 2.36

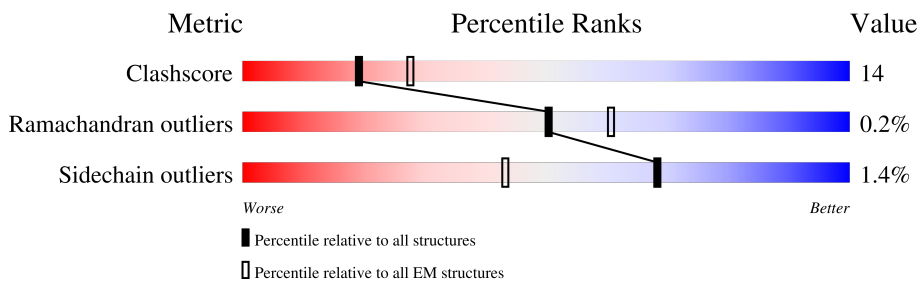
# 1 Overall quality at a glance

The following experimental techniques were used to determine the structure:

*ELECTRON MICROSCOPY*

The reported resolution of this entry is 3.63 Å.

Percentile scores (ranging between 0-100) for global validation metrics of the entry are shown in the following graphic. The table shows the number of entries on which the scores are based.



Metric	Whole archive (#Entries)	EM structures (#Entries)
Clashscore	158937	4297
Ramachandran outliers	154571	4023
Sidechain outliers	154315	3826

The table below summarises the geometric issues observed across the polymeric chains and their fit to the map. The red, orange, yellow and green segments of the bar indicate the fraction of residues that contain outliers for  $\geq 3$ , 2, 1 and 0 types of geometric quality criteria respectively. A grey segment represents the fraction of residues that are not modelled. The numeric value for each fraction is indicated below the corresponding segment, with a dot representing fractions  $\leq 5\%$ . The upper red bar (where present) indicates the fraction of residues that have poor fit to the EM map (all-atom inclusion  $< 40\%$ ). The numeric value is given above the bar.

Mol	Chain	Length	Quality of chain
1	A	367	
1	B	367	
1	C	367	
1	D	367	
2	E	680	

The following table lists non-polymeric compounds, carbohydrate monomers and non-standard residues in protein, DNA, RNA chains that are outliers for geometric or electron-density-fit criteria:

Mol	Type	Chain	Res	Chirality	Geometry	Clashes	Electron density
3	GLY	A	501	-	X	X	-
3	GLY	B	503	-	X	X	-
3	GLY	C	501	-	X	-	-
3	GLY	E	502	-	X	-	-
5	DD9	A	509	-	-	X	-
6	HP6	C	504	-	-	X	-
6	HP6	D	504	-	-	X	-
6	HP6	D	506	-	-	X	-
6	HP6	D	507	-	-	X	-
7	HEX	E	508	-	-	X	-

## 2 Entry composition [i](#)

There are 11 unique types of molecules in this entry. The entry contains 14765 atoms, of which 684 are hydrogens and 0 are deuteriums.

In the tables below, the AltConf column contains the number of residues with at least one atom in alternate conformation and the Trace column contains the number of residues modelled with at most 2 atoms.

- Molecule 1 is a protein called Glycine receptor subunit alpha-1.

Mol	Chain	Residues	Atoms					AltConf	Trace
			Total	C	N	O	S		
1	D	340	2768	1800	456	490	22	0	0
1	A	341	2778	1806	459	491	22	0	0
1	B	336	2729	1778	445	485	21	0	0
1	C	336	2726	1772	448	486	20	0	0

There are 260 discrepancies between the modelled and reference sequences:

Chain	Residue	Modelled	Actual	Comment	Reference
D	?	-	ARG	deletion	UNP P23415
D	?	-	PHE	deletion	UNP P23415
D	?	-	ARG	deletion	UNP P23415
D	?	-	ARG	deletion	UNP P23415
D	?	-	LYS	deletion	UNP P23415
D	?	-	ARG	deletion	UNP P23415
D	?	-	ARG	deletion	UNP P23415
D	?	-	HIS	deletion	UNP P23415
D	?	-	HIS	deletion	UNP P23415
D	?	-	LYS	deletion	UNP P23415
D	?	-	SER	deletion	UNP P23415
D	?	-	PRO	deletion	UNP P23415
D	?	-	MET	deletion	UNP P23415
D	?	-	LEU	deletion	UNP P23415
D	?	-	ASN	deletion	UNP P23415
D	?	-	LEU	deletion	UNP P23415
D	?	-	PHE	deletion	UNP P23415
D	?	-	GLN	deletion	UNP P23415
D	?	-	GLU	deletion	UNP P23415
D	?	-	ASP	deletion	UNP P23415
D	?	-	GLU	deletion	UNP P23415
D	?	-	ALA	deletion	UNP P23415

*Continued on next page...*

*Continued from previous page...*

Chain	Residue	Modelled	Actual	Comment	Reference
D	?	-	GLY	deletion	UNP P23415
D	?	-	GLU	deletion	UNP P23415
D	?	-	GLY	deletion	UNP P23415
D	?	-	ARG	deletion	UNP P23415
D	?	-	PHE	deletion	UNP P23415
D	?	-	ASN	deletion	UNP P23415
D	?	-	PHE	deletion	UNP P23415
D	?	-	SER	deletion	UNP P23415
D	?	-	ALA	deletion	UNP P23415
D	?	-	TYR	deletion	UNP P23415
D	?	-	GLY	deletion	UNP P23415
D	?	-	MET	deletion	UNP P23415
D	?	-	GLY	deletion	UNP P23415
D	?	-	PRO	deletion	UNP P23415
D	?	-	ALA	deletion	UNP P23415
D	?	-	CYS	deletion	UNP P23415
D	?	-	LEU	deletion	UNP P23415
D	?	-	GLN	deletion	UNP P23415
D	?	-	ALA	deletion	UNP P23415
D	?	-	LYS	deletion	UNP P23415
D	?	-	ASP	deletion	UNP P23415
D	?	-	GLY	deletion	UNP P23415
D	?	-	ILE	deletion	UNP P23415
D	?	-	SER	deletion	UNP P23415
D	?	-	VAL	deletion	UNP P23415
D	?	-	LYS	deletion	UNP P23415
D	?	-	GLY	deletion	UNP P23415
D	?	-	ALA	deletion	UNP P23415
D	?	-	ASN	deletion	UNP P23415
D	?	-	ASN	deletion	UNP P23415
D	?	-	SER	deletion	UNP P23415
D	?	-	ASN	deletion	UNP P23415
D	?	-	THR	deletion	UNP P23415
D	?	-	THR	deletion	UNP P23415
D	?	-	ASN	deletion	UNP P23415
D	?	-	PRO	deletion	UNP P23415
D	?	-	PRO	deletion	UNP P23415
D	?	-	PRO	deletion	UNP P23415
D	?	-	ALA	deletion	UNP P23415
D	?	-	PRO	deletion	UNP P23415
D	377	GLY	SER	conflict	UNP P23415
D	378	SER	LYS	conflict	UNP P23415

*Continued on next page...*

*Continued from previous page...*

Chain	Residue	Modelled	Actual	Comment	Reference
D	380	GLY	PRO	conflict	UNP P23415
A	?	-	ARG	deletion	UNP P23415
A	?	-	PHE	deletion	UNP P23415
A	?	-	ARG	deletion	UNP P23415
A	?	-	ARG	deletion	UNP P23415
A	?	-	LYS	deletion	UNP P23415
A	?	-	ARG	deletion	UNP P23415
A	?	-	ARG	deletion	UNP P23415
A	?	-	HIS	deletion	UNP P23415
A	?	-	HIS	deletion	UNP P23415
A	?	-	LYS	deletion	UNP P23415
A	?	-	SER	deletion	UNP P23415
A	?	-	PRO	deletion	UNP P23415
A	?	-	MET	deletion	UNP P23415
A	?	-	LEU	deletion	UNP P23415
A	?	-	ASN	deletion	UNP P23415
A	?	-	LEU	deletion	UNP P23415
A	?	-	PHE	deletion	UNP P23415
A	?	-	GLN	deletion	UNP P23415
A	?	-	GLU	deletion	UNP P23415
A	?	-	ASP	deletion	UNP P23415
A	?	-	GLU	deletion	UNP P23415
A	?	-	ALA	deletion	UNP P23415
A	?	-	GLY	deletion	UNP P23415
A	?	-	GLU	deletion	UNP P23415
A	?	-	GLY	deletion	UNP P23415
A	?	-	ARG	deletion	UNP P23415
A	?	-	PHE	deletion	UNP P23415
A	?	-	ASN	deletion	UNP P23415
A	?	-	PHE	deletion	UNP P23415
A	?	-	SER	deletion	UNP P23415
A	?	-	ALA	deletion	UNP P23415
A	?	-	TYR	deletion	UNP P23415
A	?	-	GLY	deletion	UNP P23415
A	?	-	MET	deletion	UNP P23415
A	?	-	GLY	deletion	UNP P23415
A	?	-	PRO	deletion	UNP P23415
A	?	-	ALA	deletion	UNP P23415
A	?	-	CYS	deletion	UNP P23415
A	?	-	LEU	deletion	UNP P23415
A	?	-	GLN	deletion	UNP P23415
A	?	-	ALA	deletion	UNP P23415

*Continued on next page...*

*Continued from previous page...*

Chain	Residue	Modelled	Actual	Comment	Reference
A	?	-	LYS	deletion	UNP P23415
A	?	-	ASP	deletion	UNP P23415
A	?	-	GLY	deletion	UNP P23415
A	?	-	ILE	deletion	UNP P23415
A	?	-	SER	deletion	UNP P23415
A	?	-	VAL	deletion	UNP P23415
A	?	-	LYS	deletion	UNP P23415
A	?	-	GLY	deletion	UNP P23415
A	?	-	ALA	deletion	UNP P23415
A	?	-	ASN	deletion	UNP P23415
A	?	-	ASN	deletion	UNP P23415
A	?	-	SER	deletion	UNP P23415
A	?	-	ASN	deletion	UNP P23415
A	?	-	THR	deletion	UNP P23415
A	?	-	THR	deletion	UNP P23415
A	?	-	ASN	deletion	UNP P23415
A	?	-	PRO	deletion	UNP P23415
A	?	-	PRO	deletion	UNP P23415
A	?	-	PRO	deletion	UNP P23415
A	?	-	ALA	deletion	UNP P23415
A	?	-	PRO	deletion	UNP P23415
A	377	GLY	SER	conflict	UNP P23415
A	378	SER	LYS	conflict	UNP P23415
A	380	GLY	PRO	conflict	UNP P23415
B	?	-	ARG	deletion	UNP P23415
B	?	-	PHE	deletion	UNP P23415
B	?	-	ARG	deletion	UNP P23415
B	?	-	ARG	deletion	UNP P23415
B	?	-	LYS	deletion	UNP P23415
B	?	-	ARG	deletion	UNP P23415
B	?	-	ARG	deletion	UNP P23415
B	?	-	HIS	deletion	UNP P23415
B	?	-	HIS	deletion	UNP P23415
B	?	-	LYS	deletion	UNP P23415
B	?	-	SER	deletion	UNP P23415
B	?	-	PRO	deletion	UNP P23415
B	?	-	MET	deletion	UNP P23415
B	?	-	LEU	deletion	UNP P23415
B	?	-	ASN	deletion	UNP P23415
B	?	-	LEU	deletion	UNP P23415
B	?	-	PHE	deletion	UNP P23415
B	?	-	GLN	deletion	UNP P23415

*Continued on next page...*

*Continued from previous page...*

Chain	Residue	Modelled	Actual	Comment	Reference
B	?	-	GLU	deletion	UNP P23415
B	?	-	ASP	deletion	UNP P23415
B	?	-	GLU	deletion	UNP P23415
B	?	-	ALA	deletion	UNP P23415
B	?	-	GLY	deletion	UNP P23415
B	?	-	GLU	deletion	UNP P23415
B	?	-	GLY	deletion	UNP P23415
B	?	-	ARG	deletion	UNP P23415
B	?	-	PHE	deletion	UNP P23415
B	?	-	ASN	deletion	UNP P23415
B	?	-	PHE	deletion	UNP P23415
B	?	-	SER	deletion	UNP P23415
B	?	-	ALA	deletion	UNP P23415
B	?	-	TYR	deletion	UNP P23415
B	?	-	GLY	deletion	UNP P23415
B	?	-	MET	deletion	UNP P23415
B	?	-	GLY	deletion	UNP P23415
B	?	-	PRO	deletion	UNP P23415
B	?	-	ALA	deletion	UNP P23415
B	?	-	CYS	deletion	UNP P23415
B	?	-	LEU	deletion	UNP P23415
B	?	-	GLN	deletion	UNP P23415
B	?	-	ALA	deletion	UNP P23415
B	?	-	LYS	deletion	UNP P23415
B	?	-	ASP	deletion	UNP P23415
B	?	-	GLY	deletion	UNP P23415
B	?	-	ILE	deletion	UNP P23415
B	?	-	SER	deletion	UNP P23415
B	?	-	VAL	deletion	UNP P23415
B	?	-	LYS	deletion	UNP P23415
B	?	-	GLY	deletion	UNP P23415
B	?	-	ALA	deletion	UNP P23415
B	?	-	ASN	deletion	UNP P23415
B	?	-	ASN	deletion	UNP P23415
B	?	-	SER	deletion	UNP P23415
B	?	-	ASN	deletion	UNP P23415
B	?	-	THR	deletion	UNP P23415
B	?	-	THR	deletion	UNP P23415
B	?	-	ASN	deletion	UNP P23415
B	?	-	PRO	deletion	UNP P23415
B	?	-	PRO	deletion	UNP P23415
B	?	-	PRO	deletion	UNP P23415

*Continued on next page...*



*Continued from previous page...*

Chain	Residue	Modelled	Actual	Comment	Reference
B	?	-	ALA	deletion	UNP P23415
B	?	-	PRO	deletion	UNP P23415
B	377	GLY	SER	conflict	UNP P23415
B	378	SER	LYS	conflict	UNP P23415
B	380	GLY	PRO	conflict	UNP P23415
C	?	-	ARG	deletion	UNP P23415
C	?	-	PHE	deletion	UNP P23415
C	?	-	ARG	deletion	UNP P23415
C	?	-	ARG	deletion	UNP P23415
C	?	-	LYS	deletion	UNP P23415
C	?	-	ARG	deletion	UNP P23415
C	?	-	ARG	deletion	UNP P23415
C	?	-	HIS	deletion	UNP P23415
C	?	-	HIS	deletion	UNP P23415
C	?	-	LYS	deletion	UNP P23415
C	?	-	SER	deletion	UNP P23415
C	?	-	PRO	deletion	UNP P23415
C	?	-	MET	deletion	UNP P23415
C	?	-	LEU	deletion	UNP P23415
C	?	-	ASN	deletion	UNP P23415
C	?	-	LEU	deletion	UNP P23415
C	?	-	PHE	deletion	UNP P23415
C	?	-	GLN	deletion	UNP P23415
C	?	-	GLU	deletion	UNP P23415
C	?	-	ASP	deletion	UNP P23415
C	?	-	GLU	deletion	UNP P23415
C	?	-	ALA	deletion	UNP P23415
C	?	-	GLY	deletion	UNP P23415
C	?	-	GLU	deletion	UNP P23415
C	?	-	GLY	deletion	UNP P23415
C	?	-	ARG	deletion	UNP P23415
C	?	-	PHE	deletion	UNP P23415
C	?	-	ASN	deletion	UNP P23415
C	?	-	PHE	deletion	UNP P23415
C	?	-	SER	deletion	UNP P23415
C	?	-	ALA	deletion	UNP P23415
C	?	-	TYR	deletion	UNP P23415
C	?	-	GLY	deletion	UNP P23415
C	?	-	MET	deletion	UNP P23415
C	?	-	GLY	deletion	UNP P23415
C	?	-	PRO	deletion	UNP P23415
C	?	-	ALA	deletion	UNP P23415

*Continued on next page...*

*Continued from previous page...*

Chain	Residue	Modelled	Actual	Comment	Reference
C	?	-	CYS	deletion	UNP P23415
C	?	-	LEU	deletion	UNP P23415
C	?	-	GLN	deletion	UNP P23415
C	?	-	ALA	deletion	UNP P23415
C	?	-	LYS	deletion	UNP P23415
C	?	-	ASP	deletion	UNP P23415
C	?	-	GLY	deletion	UNP P23415
C	?	-	ILE	deletion	UNP P23415
C	?	-	SER	deletion	UNP P23415
C	?	-	VAL	deletion	UNP P23415
C	?	-	LYS	deletion	UNP P23415
C	?	-	GLY	deletion	UNP P23415
C	?	-	ALA	deletion	UNP P23415
C	?	-	ASN	deletion	UNP P23415
C	?	-	ASN	deletion	UNP P23415
C	?	-	SER	deletion	UNP P23415
C	?	-	ASN	deletion	UNP P23415
C	?	-	THR	deletion	UNP P23415
C	?	-	THR	deletion	UNP P23415
C	?	-	ASN	deletion	UNP P23415
C	?	-	PRO	deletion	UNP P23415
C	?	-	PRO	deletion	UNP P23415
C	?	-	PRO	deletion	UNP P23415
C	?	-	ALA	deletion	UNP P23415
C	?	-	PRO	deletion	UNP P23415
C	377	GLY	SER	conflict	UNP P23415
C	378	SER	LYS	conflict	UNP P23415
C	380	GLY	PRO	conflict	UNP P23415

- Molecule 2 is a protein called Glycine receptor subunit beta, Green fluorescent protein, Glycine receptor beta.

Mol	Chain	Residues	Atoms					AltConf	Trace
			Total	C	N	O	S		
2	E	331	2685	1765	427	477	16	0	0

There are 13 discrepancies between the modelled and reference sequences:

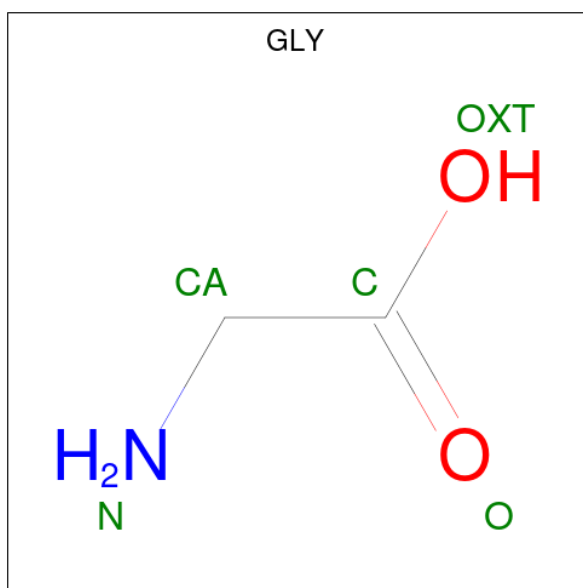
Chain	Residue	Modelled	Actual	Comment	Reference
E	333A	GLY	-	linker	UNP P48167
E	333B	GLY	-	linker	UNP P48167
E	333C	SER	-	linker	UNP P48167

*Continued on next page...*

Continued from previous page...

Chain	Residue	Modelled	Actual	Comment	Reference
E	333D	SER	-	linker	UNP P48167
E	333E	ALA	-	linker	UNP P48167
E	333F	ALA	-	linker	UNP P48167
E	333G	ALA	-	linker	UNP P48167
E	333H	VAL	MET	conflict	UNP P42212
E	342L	SER	-	linker	UNP P42212
E	342M	GLY	-	linker	UNP P42212
E	342O	GLY	THR	conflict	UNP A0A2K6CAQ3
E	342P	SER	LEU	conflict	UNP A0A2K6CAQ3
E	342Q	GLY	GLN	conflict	UNP A0A2K6CAQ3

- Molecule 3 is GLYCINE (three-letter code: GLY) (formula:  $C_2H_5NO_2$ ).



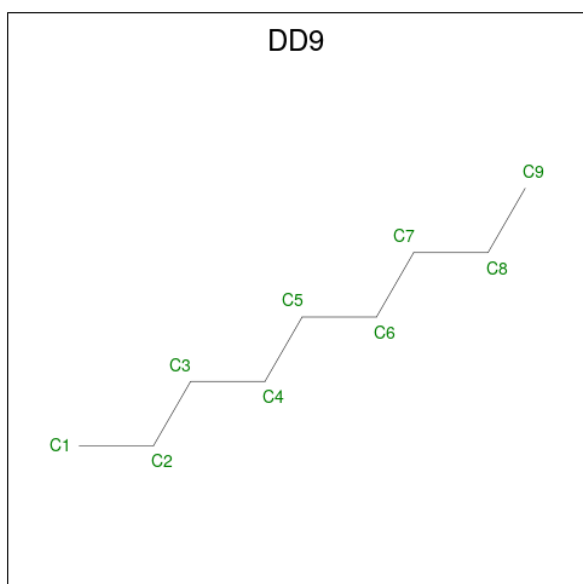
Mol	Chain	Residues	Atoms				AltConf
3	D	1	Total	C	N	O	0
			5	2	1	2	
3	A	1	Total	C	N	O	0
			5	2	1	2	
3	B	1	Total	C	N	O	0
			5	2	1	2	
3	C	1	Total	C	N	O	0
			5	2	1	2	
3	E	1	Total	C	N	O	0
			5	2	1	2	

- Molecule 4 is 2-acetamido-2-deoxy-beta-D-glucopyranose (three-letter code: NAG) (formula:  $C_8H_{15}NO_6$ ).



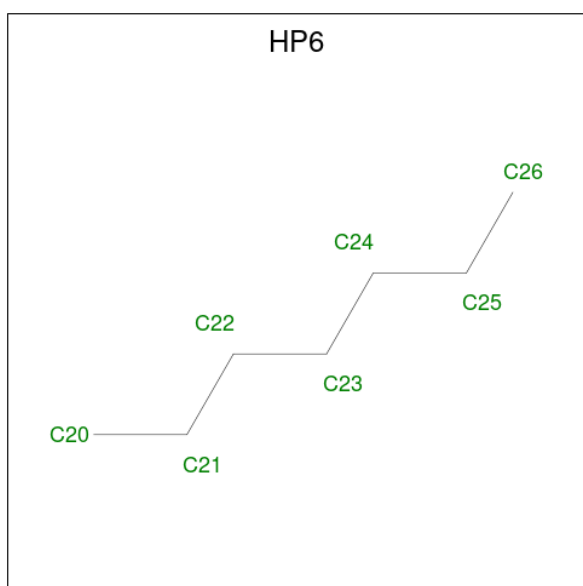
Mol	Chain	Residues	Atoms				AltConf
			Total	C	N	O	
4	D	1	Total 14	8	1	5	0
4	A	1	Total 14	8	1	5	0
4	B	1	Total 14	8	1	5	0
4	C	1	Total 14	8	1	5	0
4	E	1	Total 14	8	1	5	0

- Molecule 5 is nonane (three-letter code: DD9) (formula: C<sub>9</sub>H<sub>20</sub>).



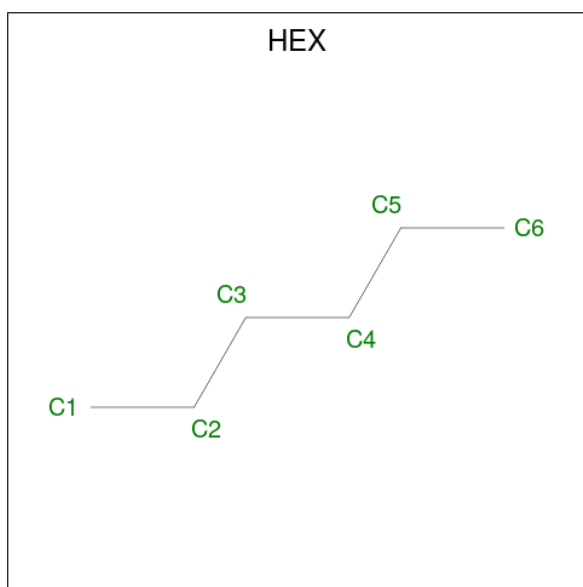
Mol	Chain	Residues	Atoms			AltConf
5	D	1	Total	C	H	0
			29	9	20	
5	A	1	Total	C	H	0
			29	9	20	
5	A	1	Total	C	H	0
			29	9	20	
5	B	1	Total	C	H	0
			29	9	20	

- Molecule 6 is HEPTANE (three-letter code: HP6) (formula:  $C_7H_{16}$ ).



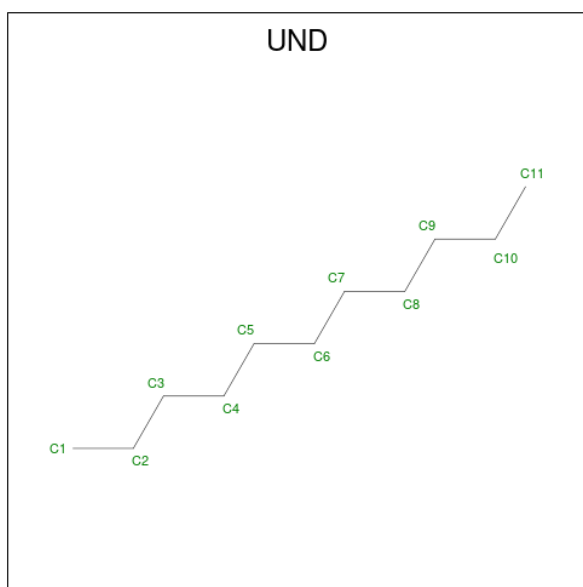
Mol	Chain	Residues	Atoms			AltConf
6	D	1	Total	C	H	0
			23	7	16	
6	D	1	Total	C	H	0
			23	7	16	
6	D	1	Total	C	H	0
			23	7	16	
6	A	1	Total	C	H	0
			23	7	16	
6	C	1	Total	C	H	0
			23	7	16	
6	C	1	Total	C	H	0
			23	7	16	

- Molecule 7 is HEXANE (three-letter code: HEX) (formula:  $C_6H_{14}$ ).



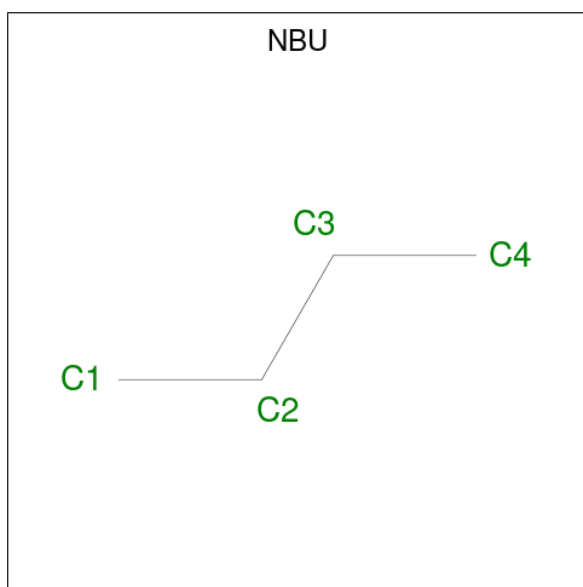
Mol	Chain	Residues	Atoms			AltConf
7	D	1	Total	C	H	0
			20	6	14	
7	D	1	Total	C	H	0
			20	6	14	
7	D	1	Total	C	H	0
			20	6	14	
7	D	1	Total	C	H	0
			20	6	14	
7	A	1	Total	C	H	0
			20	6	14	
7	B	1	Total	C	H	0
			20	6	14	
7	B	1	Total	C	H	0
			20	6	14	
7	B	1	Total	C	H	0
			20	6	14	
7	C	1	Total	C	H	0
			20	6	14	
7	C	1	Total	C	H	0
			20	6	14	
7	E	1	Total	C	H	0
			20	6	14	
7	E	1	Total	C	H	0
			20	6	14	

- Molecule 8 is UNDECANE (three-letter code: UND) (formula: C<sub>11</sub>H<sub>24</sub>).



Mol	Chain	Residues	Atoms			AltConf
			Total	C	H	
8	D	1	35	11	24	0
8	A	1	35	11	24	0
8	A	1	35	11	24	0
8	A	1	35	11	24	0
8	A	1	35	11	24	0
8	E	1	35	11	24	0

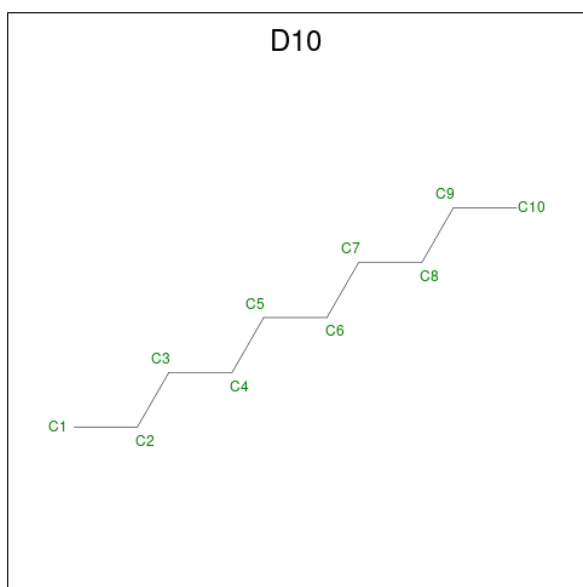
- Molecule 9 is N-BUTANE (three-letter code: NBU) (formula: C<sub>4</sub>H<sub>10</sub>).



Mol	Chain	Residues	Atoms			AltConf
9	A	1	Total	C	H	0
			14	4	10	
9	A	1	Total	C	H	0
			14	4	10	
9	B	1	Total	C	H	0
			14	4	10	
9	B	1	Total	C	H	0
			14	4	10	
9	B	1	Total	C	H	0
			14	4	10	
9	C	1	Total	C	H	0
			14	4	10	
9	C	1	Total	C	H	0
			14	4	10	
9	E	1	Total	C	H	0
			14	4	10	

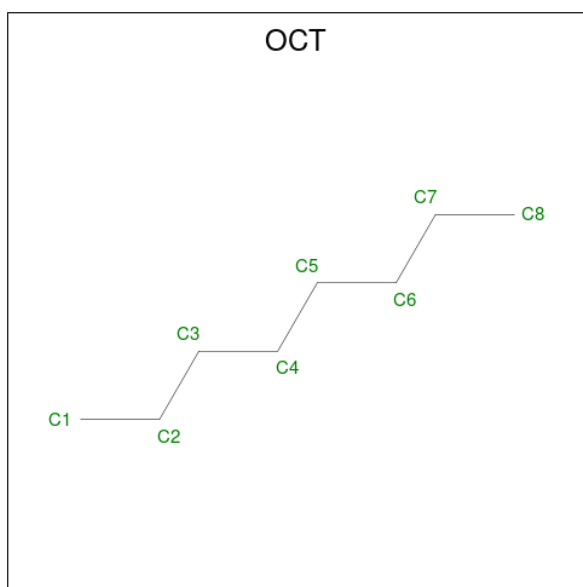
- Molecule 10 is DECANE (three-letter code: D10) (formula: C<sub>10</sub>H<sub>22</sub>).





Mol	Chain	Residues	Atoms			AltConf
10	B	1	Total	C	H	0
			32	10	22	
10	B	1	Total	C	H	0
			32	10	22	
10	E	1	Total	C	H	0
			32	10	22	

- Molecule 11 is N-OCTANE (three-letter code: OCT) (formula: C<sub>8</sub>H<sub>18</sub>).



Mol	Chain	Residues	Atoms			AltConf
11	E	1	Total	C	H	0
			26	8	18	

*Continued on next page...*

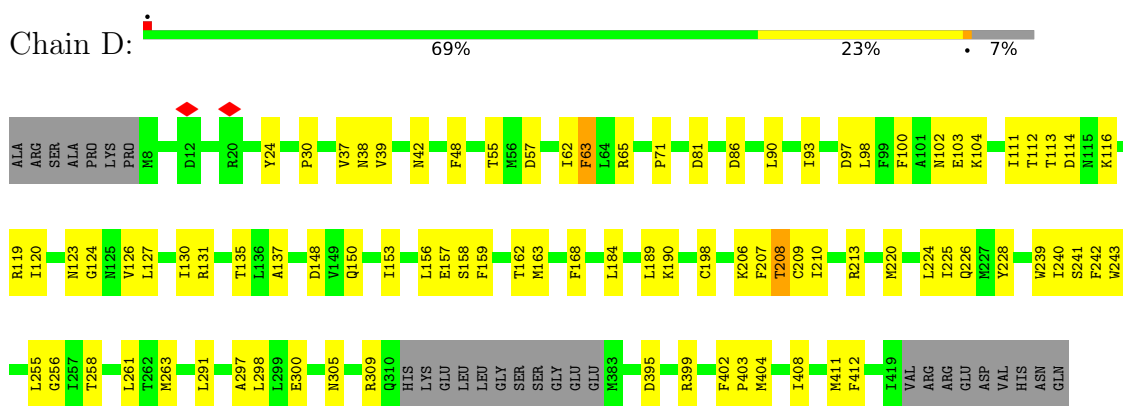
*Continued from previous page...*

Mol	Chain	Residues	Atoms			AltConf
			Total	C	H	
11	E	1	26	8	18	0

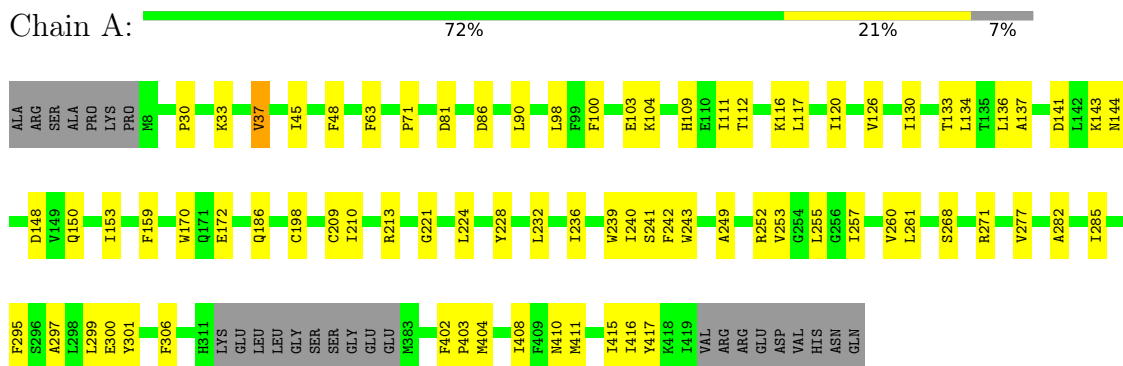
### 3 Residue-property plots

These plots are drawn for all protein, RNA, DNA and oligosaccharide chains in the entry. The first graphic for a chain summarises the proportions of the various outlier classes displayed in the second graphic. The second graphic shows the sequence view annotated by issues in geometry and atom inclusion in map density. Residues are color-coded according to the number of geometric quality criteria for which they contain at least one outlier: green = 0, yellow = 1, orange = 2 and red = 3 or more. A red diamond above a residue indicates a poor fit to the EM map for this residue (all-atom inclusion < 40%). Stretches of 2 or more consecutive residues without any outlier are shown as a green connector. Residues present in the sample, but not in the model, are shown in grey.

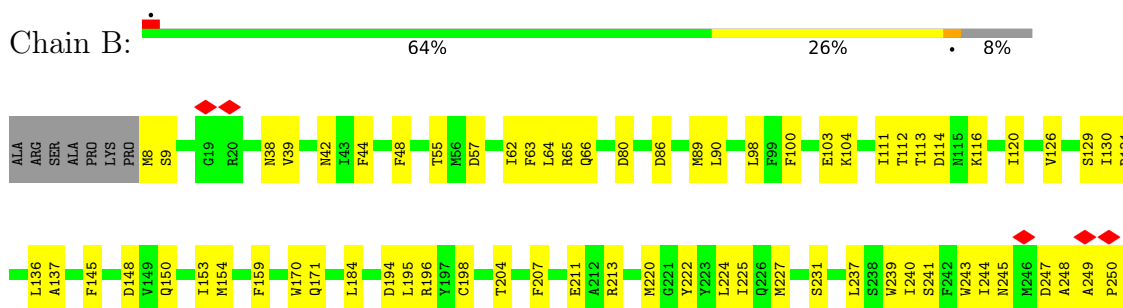
- Molecule 1: Glycine receptor subunit alpha-1



- Molecule 1: Glycine receptor subunit alpha-1



- Molecule 1: Glycine receptor subunit alpha-1





LEU  
GLU  
PHE  
VAL  
THR  
LYS  
ALA  
ALA  
GLY  
ILE  
THR  
HIS  
GLY  
MET  
ASP  
GLU  
LEU  
TYR  
LYS  
SER  
GLY  
SER  
SER  
GLY  
GLY  
VAL  
VAL  
GLY  
GLU  
THR  
ARG  
CYS  
LYS  
LYS  
VAL  
VAL  
CYS  
THR  
SER  
LYS  
SER  
SER  
ASP  
LEU  
ARG  
SER  
SER  
ASN  
ASP  
PHE  
SER  
SER  
ILE  
VAL  
GLY  
SER  
SER  
LEU  
PRO  
ARG  
ASP  
PHE  
GLU  
LEU  
SER  
ASN  
TYR

ASP  
CYS  
TYR  
GLY  
LYS  
PRO  
ILE  
GLU  
VAL  
VAL  
ASN  
THR  
ASN  
GLY  
LEU  
GLY  
LYS  
SER  
GLN  
ALA  
LYS  
ASN  
ASN  
LYS  
LYS  
PRO  
PRO  
PRO  
ALA  
LYS  
PRO  
VAL  
ILE  
PRO  
7446  
8456  
9471  
1475

## 4 Experimental information

Property	Value	Source
EM reconstruction method	SINGLE PARTICLE	Depositor
Imposed symmetry	POINT, C1	Depositor
Number of particles used	21676	Depositor
Resolution determination method	FSC 0.143 CUT-OFF	Depositor
CTF correction method	PHASE FLIPPING AND AMPLITUDE CORRECTION	Depositor
Microscope	FEI TITAN KRIOS	Depositor
Voltage (kV)	300	Depositor
Electron dose ( $e^-/\text{\AA}^2$ )	69.6	Depositor
Minimum defocus (nm)	1000	Depositor
Maximum defocus (nm)	2500	Depositor
Magnification	Not provided	
Image detector	GATAN K3 (6k x 4k)	Depositor
Maximum map value	2.766	Depositor
Minimum map value	-2.146	Depositor
Average map value	0.009	Depositor
Map value standard deviation	0.092	Depositor
Recommended contour level	0.26	Depositor
Map size (Å)	239.04, 239.04, 239.04	wwPDB
Map dimensions	288, 288, 288	wwPDB
Map angles (°)	90.0, 90.0, 90.0	wwPDB
Pixel spacing (Å)	0.83, 0.83, 0.83	Depositor

## 5 Model quality [i](#)

### 5.1 Standard geometry [i](#)

Bond lengths and bond angles in the following residue types are not validated in this section: HP6, DD9, OCT, D10, NAG, HEX, NBU, UND

The Z score for a bond length (or angle) is the number of standard deviations the observed value is removed from the expected value. A bond length (or angle) with  $|Z| > 5$  is considered an outlier worth inspection. RMSZ is the root-mean-square of all Z scores of the bond lengths (or angles).

Mol	Chain	Bond lengths		Bond angles	
		RMSZ	# Z  >5	RMSZ	# Z  >5
1	A	0.27	0/2848	0.50	0/3856
1	B	0.31	0/2798	0.52	0/3791
1	C	0.26	0/2794	0.51	0/3787
1	D	0.27	0/2837	0.51	0/3841
2	E	0.27	0/2755	0.51	0/3747
All	All	0.28	0/14032	0.51	0/19022

There are no bond length outliers.

There are no bond angle outliers.

There are no chirality outliers.

There are no planarity outliers.

### 5.2 Too-close contacts [i](#)

In the following table, the Non-H and H(model) columns list the number of non-hydrogen atoms and hydrogen atoms in the chain respectively. The H(added) column lists the number of hydrogen atoms added and optimized by MolProbity. The Clashes column lists the number of clashes within the asymmetric unit, whereas Symm-Clashes lists symmetry-related clashes.

Mol	Chain	Non-H	H(model)	H(added)	Clashes	Symm-Clashes
1	A	2778	0	2777	85	0
1	B	2729	0	2727	119	0
1	C	2726	0	2719	77	0
1	D	2768	0	2770	87	0
2	E	2685	0	2693	83	0
3	A	5	0	2	9	0
3	B	5	0	2	11	0
3	C	5	0	2	1	0

*Continued on next page...*

Continued from previous page...

Mol	Chain	Non-H	H(model)	H(added)	Clashes	Symm-Clashes
3	D	5	0	2	3	0
3	E	5	0	2	2	0
4	A	14	0	13	0	0
4	B	14	0	13	0	0
4	C	14	0	13	0	0
4	D	14	0	13	0	0
4	E	14	0	13	0	0
5	A	18	40	40	7	0
5	B	9	20	20	0	0
5	D	9	20	20	0	0
6	A	7	16	16	0	0
6	C	14	32	32	13	0
6	D	21	48	48	21	0
7	A	6	14	14	1	0
7	B	18	42	40	0	0
7	C	12	28	28	1	0
7	D	30	70	70	1	0
7	E	12	28	28	6	0
8	A	44	96	94	2	0
8	D	11	24	24	4	0
8	E	11	24	24	0	0
9	A	8	20	20	0	0
9	B	12	30	30	2	0
9	C	8	20	20	1	0
9	E	4	10	10	0	0
10	B	20	44	44	7	0
10	E	10	22	22	0	0
11	E	16	36	36	1	0
All	All	14081	684	14441	406	0

The all-atom clashscore is defined as the number of clashes found per 1000 atoms (including hydrogen atoms). The all-atom clashscore for this structure is 14.

All (406) close contacts within the same asymmetric unit are listed below, sorted by their clash magnitude.

Atom-1	Atom-2	Interatomic distance (Å)	Clash overlap (Å)
1:A:159:PHE:CZ	3:A:501:GLY:HA3	1.72	1.23
2:E:231:TYR:HE2	3:E:502:GLY:N	1.34	1.23
1:D:240:ILE:HD13	6:D:506:HP6:H212	1.28	1.16
1:A:159:PHE:CE1	3:A:501:GLY:N	2.16	1.13
1:B:244:ILE:HG22	1:B:247:ASP:OD2	1.49	1.13

Continued on next page...



*Continued from previous page...*

Atom-1	Atom-2	Interatomic distance (Å)	Clash overlap (Å)
1:B:159:PHE:CE1	3:B:503:GLY:N	2.17	1.12
1:C:414:TRP:CH2	6:C:504:HP6:H231	1.83	1.12
2:E:231:TYR:CE2	3:E:502:GLY:N	2.18	1.12
2:E:267:TRP:CZ2	7:E:508:HEX:H12	1.83	1.12
1:C:414:TRP:CZ3	6:C:504:HP6:H222	1.89	1.08
1:B:225:ILE:HD11	10:B:501:D10:H52	1.36	1.07
1:D:412:PHE:CE2	6:D:507:HP6:H263	1.91	1.05
1:B:267:SER:HA	1:B:287:MET:SD	1.96	1.05
1:D:412:PHE:CD2	6:D:507:HP6:H263	1.91	1.04
1:B:225:ILE:HD11	10:B:501:D10:C5	1.88	1.03
1:A:159:PHE:CZ	3:A:501:GLY:CA	2.42	1.02
1:A:243:TRP:CE3	5:A:509:DD9:H5	1.96	1.00
1:C:414:TRP:CZ3	6:C:504:HP6:C22	2.45	0.99
1:B:159:PHE:HE1	3:B:503:GLY:N	1.56	0.97
1:A:243:TRP:CZ3	5:A:509:DD9:H5	2.03	0.94
2:E:267:TRP:HZ2	7:E:508:HEX:C1	1.82	0.93
1:A:240:ILE:HG22	5:A:509:DD9:H9	1.50	0.92
1:D:240:ILE:HD13	6:D:506:HP6:C21	1.99	0.92
1:B:244:ILE:CG2	1:B:247:ASP:OD2	2.20	0.88
1:A:159:PHE:CE1	3:A:501:GLY:CA	2.56	0.88
2:E:267:TRP:CH2	7:E:508:HEX:H12	2.10	0.86
1:A:159:PHE:CE1	3:A:501:GLY:HA3	2.11	0.86
1:B:237:LEU:HD11	1:B:255:LEU:HD22	1.59	0.83
1:B:207:PHE:HE2	3:B:503:GLY:C	1.82	0.82
1:A:240:ILE:HG22	5:A:509:DD9:C9	2.10	0.81
2:E:248:MET:SD	11:E:506:OCT:H41	2.20	0.81
1:B:225:ILE:CD1	10:B:501:D10:H52	2.12	0.80
1:D:207:PHE:CE2	3:D:501:GLY:N	2.50	0.80
1:B:207:PHE:HE2	3:B:503:GLY:CA	1.96	0.79
1:A:159:PHE:CD1	3:A:501:GLY:N	2.51	0.78
1:B:257:ILE:O	1:B:261:LEU:HG	1.82	0.78
1:D:411:MET:HE2	6:D:504:HP6:H261	1.64	0.78
1:B:244:ILE:HG22	1:B:247:ASP:CG	2.04	0.77
1:A:186:GLN:NE2	2:E:300:LYS:HD2	2.00	0.77
1:C:224:LEU:O	1:C:228:TYR:HB2	1.84	0.76
2:E:222:THR:HG22	2:E:232:THR:HA	1.68	0.76
1:B:231:SER:HA	1:B:263:MET:HE1	1.66	0.76
1:D:207:PHE:HE2	3:D:501:GLY:N	1.84	0.75
1:C:414:TRP:HZ3	6:C:504:HP6:C21	2.01	0.74
1:C:225:ILE:HD11	7:C:506:HEX:H42	1.69	0.74
1:A:243:TRP:CZ3	5:A:509:DD9:C5	2.72	0.73

*Continued on next page...*

*Continued from previous page...*

Atom-1	Atom-2	Interatomic distance (Å)	Clash overlap (Å)
1:A:159:PHE:HZ	3:A:501:GLY:HA3	1.45	0.73
1:B:243:TRP:HA	1:B:399:ARG:HH12	1.52	0.73
1:D:411:MET:SD	6:D:504:HP6:H251	2.29	0.73
1:B:244:ILE:CG2	1:B:247:ASP:HB3	2.19	0.73
2:E:267:TRP:HZ2	7:E:508:HEX:H12	1.30	0.73
1:C:257:ILE:O	1:C:261:LEU:HD13	1.88	0.72
1:C:414:TRP:CH2	6:C:504:HP6:C23	2.68	0.72
1:C:414:TRP:HZ3	6:C:504:HP6:C22	2.01	0.71
1:A:130:ILE:HD11	1:B:112:THR:HG22	1.73	0.70
1:B:42:ASN:ND2	1:B:171:GLN:OE1	2.23	0.70
1:D:225:ILE:HD11	8:D:512:UND:H71	1.71	0.70
1:D:225:ILE:HD11	8:D:512:UND:C7	2.20	0.70
1:D:411:MET:CE	6:D:504:HP6:C26	2.69	0.70
2:E:332:LEU:HD11	2:E:333:ASN:HD21	1.55	0.70
1:B:244:ILE:CG2	1:B:247:ASP:CG	2.59	0.70
1:C:414:TRP:HZ3	6:C:504:HP6:H222	1.55	0.70
1:D:412:PHE:HD2	6:D:507:HP6:H263	1.55	0.70
1:B:244:ILE:CG2	1:B:247:ASP:CB	2.70	0.69
1:D:90:LEU:HD11	1:D:116:LYS:HD3	1.75	0.69
1:B:395:ASP:OD2	1:B:399:ARG:NH2	2.26	0.69
2:E:163:LEU:HD22	2:E:173:GLN:HG2	1.74	0.69
1:B:260:VAL:HA	1:B:294:VAL:HG11	1.73	0.68
2:E:265:SER:O	2:E:276:ARG:NH1	2.27	0.68
1:C:414:TRP:CZ3	6:C:504:HP6:C23	2.78	0.67
1:D:258:THR:CG2	1:C:261:LEU:HD11	2.24	0.67
1:D:411:MET:HE1	6:D:504:HP6:H263	1.78	0.66
1:B:244:ILE:HG22	1:B:247:ASP:CB	2.25	0.66
2:E:60:VAL:HG22	2:E:89:TRP:HB3	1.78	0.66
1:B:244:ILE:HG22	1:B:247:ASP:HB3	1.76	0.66
1:D:258:THR:HG23	1:C:261:LEU:HD11	1.76	0.65
1:D:241:SER:HB2	1:D:255:LEU:HD23	1.77	0.65
1:B:104:LYS:HE2	1:B:137:ALA:HB2	1.79	0.65
1:B:227:MET:HE3	1:B:270:SER:HA	1.78	0.65
1:D:98:LEU:HA	1:D:158:SER:HA	1.78	0.65
1:D:261:LEU:HD11	2:E:282:PHE:CD1	2.31	0.65
1:A:416:ILE:HG23	1:A:417:TYR:HD1	1.60	0.65
1:C:414:TRP:CZ3	6:C:504:HP6:C21	2.78	0.65
1:D:395:ASP:OD2	1:D:399:ARG:NH2	2.28	0.65
2:E:267:TRP:CZ2	7:E:508:HEX:C1	2.60	0.65
1:B:285:ILE:HD11	10:B:508:D10:H72	1.80	0.64
1:D:116:LYS:HG2	1:D:130:ILE:HG22	1.79	0.64

*Continued on next page...*

*Continued from previous page...*

Atom-1	Atom-2	Interatomic distance (Å)	Clash overlap (Å)
1:D:305:ASN:OD1	1:D:309:ARG:NH2	2.32	0.63
1:B:207:PHE:CE2	3:B:503:GLY:C	2.69	0.63
1:D:412:PHE:HE2	6:D:507:HP6:H263	1.55	0.63
3:B:503:GLY:O	1:C:117:LEU:HD13	1.98	0.63
1:A:253:VAL:HG21	1:B:254:GLY:HA3	1.80	0.63
1:B:48:PHE:HD2	1:B:184:LEU:HD21	1.64	0.63
1:A:249:ALA:HB1	1:B:250:PRO:HG2	1.80	0.63
2:E:332:LEU:CD1	2:E:333:ASN:HD21	2.12	0.62
1:A:148:ASP:OD2	1:A:150:GLN:NE2	2.28	0.62
1:A:261:LEU:HD21	1:B:261:LEU:HB3	1.81	0.62
2:E:116:LEU:HD12	2:E:141:LEU:HD11	1.80	0.62
1:A:144:ASN:HA	1:A:282:ALA:HB2	1.82	0.62
1:B:130:ILE:HD11	1:C:112:THR:HG22	1.80	0.62
2:E:72:ILE:HD11	2:E:163:LEU:HD21	1.82	0.62
2:E:332:LEU:CD1	2:E:333:ASN:ND2	2.63	0.62
1:A:103:GLU:OE2	1:B:131:ARG:NH1	2.33	0.61
2:E:51:PRO:HB3	2:E:92:PRO:HD2	1.81	0.61
2:E:206:LEU:HD22	2:E:209:PHE:HB2	1.81	0.61
1:D:120:ILE:HG12	1:D:126:VAL:HG22	1.80	0.61
1:D:411:MET:HE2	6:D:504:HP6:C26	2.31	0.61
1:C:414:TRP:CZ3	6:C:504:HP6:H211	2.34	0.61
1:B:207:PHE:CE2	3:B:503:GLY:HA2	2.36	0.61
1:B:44:PHE:HB3	1:B:63:PHE:HB2	1.83	0.61
1:A:257:ILE:O	1:A:260:VAL:HG22	2.01	0.60
1:C:111:ILE:HG22	1:C:112:THR:HG23	1.83	0.60
1:B:207:PHE:HE2	3:B:503:GLY:HA2	1.67	0.60
1:D:104:LYS:HD2	1:D:137:ALA:HB2	1.84	0.60
1:A:104:LYS:HD2	1:A:137:ALA:HB2	1.84	0.60
1:B:207:PHE:CE2	3:B:503:GLY:CA	2.83	0.60
1:B:237:LEU:HD11	1:B:255:LEU:CD2	2.32	0.60
1:C:414:TRP:HZ3	6:C:504:HP6:H211	1.64	0.60
1:D:112:THR:HG22	1:C:130:ILE:HD11	1.82	0.59
1:C:30:PRO:HB3	1:C:71:PRO:HD2	1.84	0.59
1:B:285:ILE:CD1	10:B:508:D10:H72	2.32	0.59
2:E:76:THR:OG1	2:E:78:ASP:OD1	2.18	0.59
1:A:33:LYS:NZ	1:B:80:ASP:OD2	2.35	0.58
1:B:225:ILE:HD11	10:B:501:D10:H51	1.82	0.58
2:E:121:LEU:HD21	2:E:179:LEU:HD23	1.85	0.58
1:B:148:ASP:OD2	1:B:150:GLN:NE2	2.33	0.58
1:B:411:MET:O	1:B:415:ILE:HG12	2.04	0.58
1:B:253:VAL:HG22	1:B:301:TYR:HE2	1.68	0.58

*Continued on next page...*

*Continued from previous page...*

Atom-1	Atom-2	Interatomic distance (Å)	Clash overlap (Å)
1:D:86:ASP:OD2	1:C:27:ARG:HB3	2.05	0.57
1:C:220:MET:O	1:C:224:LEU:HB2	2.04	0.57
1:D:112:THR:O	1:D:113:THR:OG1	2.22	0.57
2:E:263:TRP:HA	2:E:266:PHE:HD2	1.69	0.57
1:B:116:LYS:HG2	1:B:130:ILE:HG22	1.87	0.57
1:D:103:GLU:OE2	2:E:154:ARG:NH1	2.38	0.56
1:D:220:MET:HG3	1:D:224:LEU:HB2	1.86	0.56
1:A:252:ARG:HD2	1:A:301:TYR:CD1	2.40	0.56
1:A:100:PHE:HB2	1:A:103:GLU:HB3	1.88	0.56
1:D:411:MET:HE1	6:D:504:HP6:C26	2.34	0.56
1:B:244:ILE:HD11	1:B:255:LEU:HD12	1.86	0.56
2:E:327:VAL:HA	2:E:330:VAL:HG12	1.87	0.56
1:B:255:LEU:O	1:B:259:THR:HG23	2.06	0.56
1:A:30:PRO:HB3	1:A:71:PRO:HD2	1.88	0.55
1:B:112:THR:O	1:B:113:THR:OG1	2.21	0.55
1:D:297:ALA:O	1:D:300:GLU:HG3	2.06	0.55
1:B:100:PHE:HB2	1:B:103:GLU:HB3	1.88	0.55
1:D:243:TRP:CE3	6:D:506:HP6:H231	2.42	0.55
2:E:251:VAL:HG21	2:E:307:LEU:HD11	1.87	0.55
1:B:260:VAL:HG22	1:B:294:VAL:CG1	2.37	0.55
1:B:120:ILE:HG12	1:B:126:VAL:HG22	1.88	0.55
1:D:240:ILE:CD1	6:D:506:HP6:C21	2.80	0.55
1:A:295:PHE:HE1	1:B:237:LEU:HD22	1.72	0.55
1:A:402:PHE:HB2	1:A:403:PRO:HD3	1.89	0.54
2:E:33:SER:OG	2:E:34:THR:N	2.40	0.54
1:A:170:TRP:HE1	1:A:210:ILE:HB	1.72	0.54
1:D:226:GLN:HB3	1:C:271:ARG:HD2	1.88	0.54
1:B:153:ILE:HG22	1:B:213:ARG:HA	1.89	0.54
2:E:159:LEU:HD11	2:E:177:MET:HG3	1.89	0.54
1:A:117:LEU:HD12	2:E:183:GLY:HA2	1.90	0.54
1:B:103:GLU:HA	1:B:136:LEU:HD23	1.89	0.54
2:E:267:TRP:HZ2	7:E:508:HEX:H13	1.70	0.54
1:B:249:ALA:HB3	1:B:250:PRO:HD3	1.90	0.54
1:A:186:GLN:HE21	2:E:300:LYS:HD2	1.73	0.54
3:B:503:GLY:O	1:C:117:LEU:CD1	2.55	0.54
2:E:37:ILE:HD11	2:E:97:PRO:HD2	1.89	0.54
2:E:329:GLN:HA	2:E:332:LEU:HD23	1.90	0.53
1:A:134:LEU:HD13	1:A:136:LEU:HD21	1.91	0.53
1:A:410:ASN:HD21	8:A:503:UND:H32	1.73	0.53
3:A:501:GLY:OXT	1:B:129:SER:HB2	2.08	0.53
1:C:241:SER:HB2	1:C:255:LEU:HD23	1.91	0.53

*Continued on next page...*

*Continued from previous page...*

Atom-1	Atom-2	Interatomic distance (Å)	Clash overlap (Å)
2:E:74:GLU:OE2	2:E:242:ARG:NH2	2.41	0.53
1:B:98:LEU:O	1:C:112:THR:OG1	2.27	0.53
1:B:241:SER:O	1:B:252:ARG:HD2	2.08	0.53
2:E:65:PHE:HB3	2:E:84:PHE:HB2	1.90	0.53
1:D:224:LEU:O	1:D:228:TYR:HB2	2.09	0.53
2:E:127:LYS:HD2	2:E:160:SER:HB3	1.91	0.53
1:D:119:ARG:HB3	1:D:127:LEU:HB3	1.91	0.52
1:D:263:MET:HB3	1:D:291:LEU:HD13	1.92	0.52
1:B:225:ILE:HD11	10:B:501:D10:C3	2.39	0.52
1:A:224:LEU:O	1:A:228:TYR:HB2	2.10	0.52
1:A:120:ILE:HG12	1:A:126:VAL:HG22	1.92	0.52
1:D:243:TRP:CZ3	6:D:506:HP6:H251	2.45	0.52
1:D:198:CYS:C	1:D:209:CYS:HB3	2.30	0.52
1:A:268:SER:HA	1:A:271:ARG:HH21	1.74	0.52
1:A:141:ASP:OD2	1:A:143:LYS:NZ	2.36	0.52
1:B:111:ILE:HG22	1:B:112:THR:HG23	1.91	0.52
2:E:131:PHE:HE1	2:E:153:MET:HE1	1.73	0.52
1:B:204:THR:HG21	3:B:503:GLY:OXT	2.10	0.52
1:A:159:PHE:CZ	3:A:501:GLY:N	2.68	0.52
1:C:18:MET:SD	1:C:93:ILE:HD11	2.50	0.51
1:A:232:LEU:HD11	8:A:503:UND:H31	1.93	0.51
1:D:157:GLU:HG3	1:D:208:THR:O	2.11	0.51
1:B:39:VAL:HG12	1:B:66:GLN:HB2	1.92	0.51
1:B:260:VAL:CA	1:B:294:VAL:HG11	2.40	0.51
2:E:140:LEU:HB3	2:E:152:SER:OG	2.11	0.51
1:B:48:PHE:CD2	1:B:184:LEU:HD21	2.46	0.51
1:C:161:TYR:HB3	1:C:165:ASP:HB2	1.93	0.51
2:E:171:ASP:OD2	2:E:173:GLN:NE2	2.37	0.51
1:D:55:THR:OG1	1:D:57:ASP:OD1	2.25	0.51
1:A:306:PHE:HE1	1:B:245:ASN:HB3	1.76	0.51
1:C:63:PHE:HE1	1:C:131:ARG:HD2	1.75	0.51
1:C:112:THR:O	1:C:113:THR:OG1	2.26	0.51
1:C:414:TRP:CE3	6:C:504:HP6:H222	2.44	0.50
1:A:255:LEU:HD12	2:E:281:ILE:HD11	1.93	0.50
1:B:55:THR:OG1	1:B:57:ASP:OD1	2.24	0.50
1:B:256:GLY:O	1:B:260:VAL:HG23	2.12	0.50
1:D:112:THR:OG1	1:C:98:LEU:O	2.30	0.50
1:D:63:PHE:HE2	1:C:159:PHE:CE1	2.29	0.50
1:B:194:ASP:HB2	1:B:213:ARG:HB2	1.94	0.50
1:B:63:PHE:O	1:B:65:ARG:HG3	2.12	0.50
1:A:86:ASP:OD1	2:E:184:TYR:OH	2.19	0.49

*Continued on next page...*

*Continued from previous page...*

Atom-1	Atom-2	Interatomic distance (Å)	Clash overlap (Å)
1:C:86:ASP:OD2	1:C:88:SER:OG	2.25	0.49
1:C:297:ALA:O	1:C:300:GLU:HG3	2.12	0.49
1:B:239:TRP:HE3	9:B:507:NBU:H22	1.76	0.49
1:D:159:PHE:CE1	3:D:501:GLY:HA2	2.47	0.49
1:D:256:GLY:HA3	1:D:298:LEU:HD12	1.93	0.49
1:B:90:LEU:HD21	1:B:116:LYS:HD2	1.95	0.49
1:C:39:VAL:HG22	1:C:68:TRP:HB3	1.93	0.49
1:C:178:VAL:HG13	1:C:182:LEU:HD13	1.94	0.49
1:D:300:GLU:HB3	7:D:510:HEX:H12	1.94	0.49
1:A:239:TRP:O	1:A:242:PHE:HB2	2.12	0.49
1:A:30:PRO:HB2	1:A:37:VAL:HG11	1.95	0.49
1:B:244:ILE:HG21	1:B:247:ASP:CG	2.33	0.49
1:D:189:LEU:HD23	1:D:190:LYS:O	2.13	0.49
1:A:257:ILE:O	1:A:260:VAL:CG2	2.61	0.49
2:E:267:TRP:HA	2:E:456:ARG:HE	1.78	0.49
1:A:306:PHE:CE1	1:B:245:ASN:N	2.81	0.49
1:B:136:LEU:HD13	1:B:154:MET:HB3	1.95	0.49
1:B:262:THR:HA	1:B:265:THR:OG1	2.13	0.49
1:C:48:PHE:HE2	1:C:51:ILE:HD11	1.78	0.48
2:E:471:TRP:O	2:E:475:LEU:HB2	2.13	0.48
1:B:396:LYS:O	1:B:399:ARG:HG2	2.13	0.48
1:D:24:TYR:HE2	1:D:93:ILE:HA	1.79	0.48
1:D:148:ASP:OD2	1:D:150:GLN:NE2	2.36	0.48
1:C:220:MET:SD	6:C:504:HP6:H201	2.54	0.48
2:E:221:CYS:O	2:E:221:CYS:SG	2.72	0.48
1:B:273:SER:C	1:B:274:LEU:HD22	2.34	0.48
1:D:243:TRP:HZ3	6:D:506:HP6:H251	1.79	0.48
1:A:411:MET:O	1:A:415:ILE:HG22	2.14	0.48
1:C:120:ILE:HG12	1:C:126:VAL:HG22	1.95	0.48
1:B:227:MET:CE	1:B:270:SER:HA	2.41	0.48
1:C:116:LYS:HG2	1:C:130:ILE:HG22	1.94	0.48
2:E:94:LEU:HD11	2:E:116:LEU:HD22	1.94	0.48
1:D:131:ARG:NH1	1:C:103:GLU:OE2	2.47	0.48
6:D:506:HP6:H212	1:C:299:LEU:HD11	1.96	0.47
1:A:236:ILE:O	1:A:240:ILE:HG23	2.14	0.47
1:D:97:ASP:OD1	1:D:97:ASP:N	2.47	0.47
1:D:261:LEU:CD1	2:E:282:PHE:CD1	2.92	0.47
1:C:153:ILE:HG22	1:C:213:ARG:HA	1.96	0.47
1:A:198:CYS:O	1:A:209:CYS:HB3	2.15	0.47
1:A:297:ALA:O	1:A:300:GLU:HG3	2.13	0.47
1:D:240:ILE:CD1	6:D:506:HP6:H212	2.20	0.47

*Continued on next page...*

*Continued from previous page...*

Atom-1	Atom-2	Interatomic distance (Å)	Clash overlap (Å)
1:A:98:LEU:O	1:B:112:THR:OG1	2.30	0.47
1:D:239:TRP:O	1:D:242:PHE:HB2	2.14	0.47
1:A:306:PHE:CE1	1:B:245:ASN:HB3	2.50	0.47
1:B:113:THR:HG22	1:B:114:ASP:N	2.29	0.47
1:B:237:LEU:HD23	1:B:259:THR:HG22	1.97	0.47
1:C:113:THR:HG22	1:C:114:ASP:N	2.29	0.47
1:A:90:LEU:HD21	1:A:116:LYS:HD2	1.96	0.47
1:D:30:PRO:HB3	1:D:71:PRO:HD2	1.97	0.47
1:D:156:LEU:HB2	1:D:210:ILE:HG13	1.95	0.47
1:C:29:ARG:HE	1:C:32:PHE:HD1	1.61	0.47
2:E:255:THR:HG23	2:E:287:LEU:HD11	1.97	0.47
2:E:266:PHE:HA	2:E:276:ARG:HH12	1.79	0.47
1:A:45:ILE:HD13	1:A:48:PHE:HE1	1.80	0.46
1:D:163:MET:HG2	1:D:206:LYS:HE2	1.97	0.46
1:B:252:ARG:HB3	1:B:301:TYR:CZ	2.50	0.46
6:D:506:HP6:H212	1:C:299:LEU:CD1	2.45	0.46
1:A:109:HIS:NE2	1:A:133:THR:OG1	2.28	0.46
1:D:225:ILE:HD11	8:D:512:UND:H72	1.96	0.46
1:D:412:PHE:HD2	6:D:507:HP6:C26	2.24	0.46
1:A:232:LEU:O	1:A:236:ILE:HG13	2.15	0.46
1:A:306:PHE:HE1	1:B:245:ASN:CB	2.28	0.46
1:D:111:ILE:O	1:D:112:THR:OG1	2.32	0.46
1:A:257:ILE:HG12	1:B:258:THR:HG22	1.98	0.46
1:B:220:MET:HB3	1:B:224:LEU:HB2	1.98	0.46
1:B:247:ASP:OD1	1:B:248:ALA:N	2.49	0.46
1:D:153:ILE:HG22	1:D:213:ARG:HA	1.98	0.46
1:B:111:ILE:O	1:B:112:THR:OG1	2.34	0.46
1:D:111:ILE:HG22	1:D:112:THR:HG23	1.98	0.46
2:E:169:PRO:HD2	2:E:306:ALA:HB3	1.98	0.46
1:A:404:MET:O	1:A:408:ILE:HG12	2.15	0.45
1:A:112:THR:OG1	2:E:121:LEU:O	2.28	0.45
1:C:48:PHE:CD2	1:C:184:LEU:HD21	2.50	0.45
2:E:218:TYR:O	2:E:219:GLY:C	2.55	0.45
1:D:113:THR:HG22	1:D:114:ASP:N	2.30	0.45
1:B:170:TRP:CD2	1:B:195:LEU:HD23	2.52	0.45
1:D:402:PHE:HB2	1:D:403:PRO:HD3	1.98	0.45
1:B:196:ARG:NE	1:B:213:ARG:HE	2.14	0.45
1:D:198:CYS:SG	1:D:209:CYS:C	2.95	0.45
1:D:402:PHE:CB	1:D:403:PRO:HD3	2.46	0.45
1:D:404:MET:O	1:D:408:ILE:HG12	2.16	0.45
1:B:267:SER:CA	1:B:287:MET:SD	2.88	0.45

*Continued on next page...*



*Continued from previous page...*

Atom-1	Atom-2	Interatomic distance (Å)	Clash overlap (Å)
1:D:162:THR:HG22	1:D:163:MET:N	2.32	0.45
1:A:109:HIS:CD2	1:A:133:THR:HG1	2.33	0.45
1:A:170:TRP:NE1	1:A:210:ILE:HB	2.31	0.45
1:B:198:CYS:HB3	1:B:211:GLU:OE2	2.17	0.45
1:A:111:ILE:O	1:A:112:THR:OG1	2.34	0.45
1:A:285:ILE:HD13	5:A:505:DD9:H6A	1.99	0.45
1:C:134:LEU:HD13	1:C:136:LEU:HD21	1.99	0.45
1:C:180:ASP:N	1:C:180:ASP:OD1	2.50	0.45
2:E:221:CYS:C	2:E:233:CYS:HB3	2.38	0.45
1:B:42:ASN:OD1	1:B:65:ARG:HB2	2.15	0.44
1:B:62:ILE:HD12	1:B:64:LEU:HB2	1.99	0.44
1:B:86:ASP:HB3	1:B:89:MET:HG3	1.98	0.44
1:B:258:THR:O	1:B:259:THR:C	2.55	0.44
1:D:258:THR:HG21	1:C:257:ILE:HG23	1.98	0.44
1:C:398:SER:HG	1:C:402:PHE:HE2	1.63	0.44
1:B:8:MET:SD	1:B:9:SER:N	2.91	0.44
1:C:48:PHE:HD2	1:C:184:LEU:HD21	1.82	0.44
1:A:240:ILE:CG2	5:A:509:DD9:H9	2.34	0.44
1:D:48:PHE:CD2	1:D:184:LEU:HD21	2.52	0.44
1:D:123:ASN:OD1	1:D:124:GLY:N	2.50	0.44
1:C:103:GLU:HA	1:C:136:LEU:HD23	1.99	0.44
2:E:244:VAL:HG12	2:E:248:MET:HB2	2.00	0.44
1:B:244:ILE:HG21	1:B:251:ALA:HB1	2.00	0.43
1:C:412:PHE:O	1:C:416:ILE:HG12	2.18	0.43
1:A:186:GLN:HE22	2:E:300:LYS:HD2	1.77	0.43
1:B:239:TRP:CE3	9:B:507:NBU:H22	2.53	0.43
2:E:142:PHE:HB2	2:E:150:LEU:HB3	1.99	0.43
2:E:212:LYS:O	2:E:213:LYS:HD2	2.18	0.43
1:C:28:ILE:O	1:C:72:ARG:NH2	2.50	0.43
1:C:168:PHE:HB3	1:C:210:ILE:HD13	2.01	0.43
2:E:85:LEU:HD21	2:E:121:LEU:HD22	2.01	0.43
1:D:39:VAL:HB	1:D:168:PHE:CD1	2.54	0.43
1:B:145:PHE:CE1	1:B:274:LEU:HD11	2.54	0.43
2:E:50:ARG:NH1	2:E:52:ASN:O	2.51	0.43
2:E:216:ILE:O	2:E:216:ILE:HG22	2.19	0.43
1:D:81:ASP:OD1	1:D:81:ASP:N	2.46	0.43
1:A:242:PHE:HE2	1:A:402:PHE:CD2	2.37	0.43
1:C:63:PHE:CE1	1:C:131:ARG:HD2	2.53	0.43
1:C:236:ILE:O	1:C:240:ILE:HG23	2.19	0.43
1:D:102:ASN:N	1:D:102:ASN:OD1	2.51	0.43
1:A:241:SER:HB2	1:A:255:LEU:HD22	2.01	0.43

*Continued on next page...*



*Continued from previous page...*

Atom-1	Atom-2	Interatomic distance (Å)	Clash overlap (Å)
1:D:198:CYS:O	1:D:209:CYS:HB3	2.19	0.43
1:D:148:ASP:OD1	1:D:148:ASP:N	2.52	0.42
1:B:267:SER:O	1:B:271:ARG:HG3	2.19	0.42
2:E:291:CYS:HB2	2:E:311:LEU:HD12	2.01	0.42
1:B:148:ASP:OD1	1:B:148:ASP:N	2.52	0.42
1:D:98:LEU:O	2:E:135:THR:OG1	2.25	0.42
2:E:324:GLU:O	2:E:327:VAL:HG12	2.19	0.42
1:B:277:VAL:O	1:C:222:TYR:HB2	2.18	0.42
1:A:81:ASP:OD1	1:A:81:ASP:N	2.44	0.42
1:A:277:VAL:O	1:B:222:TYR:HB2	2.20	0.42
1:A:402:PHE:CB	1:A:403:PRO:HD3	2.50	0.42
2:E:35:SER:O	2:E:38:LEU:HG	2.19	0.42
1:D:48:PHE:HD2	1:D:184:LEU:HD21	1.85	0.42
1:C:111:ILE:O	1:C:112:THR:OG1	2.36	0.42
2:E:221:CYS:O	2:E:222:THR:C	2.58	0.42
1:A:111:ILE:HG22	1:A:112:THR:HG23	2.00	0.42
1:A:153:ILE:HG22	1:A:213:ARG:HA	2.01	0.42
1:A:249:ALA:CB	1:B:250:PRO:HG2	2.48	0.42
1:C:220:MET:O	1:C:224:LEU:CB	2.67	0.42
2:E:184:TYR:HB3	2:E:188:ASP:HB2	2.01	0.42
2:E:280:GLY:HA3	2:E:322:LEU:HD13	2.02	0.42
1:C:207:PHE:CE2	3:C:501:GLY:HA2	2.55	0.41
1:C:224:LEU:HA	1:C:228:TYR:CD2	2.55	0.41
8:D:512:UND:H42	9:C:508:NBU:H32	2.02	0.41
1:B:289:VAL:HG11	1:B:409:PHE:CZ	2.55	0.41
1:A:172:GLU:N	1:A:172:GLU:OE1	2.53	0.41
1:A:295:PHE:CE1	1:B:237:LEU:HD13	2.55	0.41
1:B:145:PHE:CZ	1:B:274:LEU:HD21	2.55	0.41
1:C:58:TYR:CE1	1:C:152:CYS:HB3	2.55	0.41
2:E:324:GLU:O	2:E:328:VAL:HG23	2.21	0.41
1:D:412:PHE:CD2	6:D:507:HP6:C26	2.81	0.41
1:A:253:VAL:CG2	1:B:254:GLY:HA3	2.47	0.41
1:C:300:GLU:O	1:C:304:VAL:HG23	2.21	0.41
2:E:61:VAL:HA	2:E:192:ILE:O	2.20	0.41
1:D:135:THR:HG23	1:D:135:THR:O	2.20	0.41
1:A:299:LEU:HD11	1:B:240:ILE:HG21	2.01	0.41
1:B:237:LEU:HG	1:B:259:THR:HG22	2.03	0.41
2:E:246:PHE:O	2:E:250:GLY:N	2.54	0.41
1:C:135:THR:O	1:C:135:THR:HG23	2.21	0.41
1:D:100:PHE:HB2	1:D:103:GLU:HB3	2.03	0.41
1:D:243:TRP:HA	1:D:399:ARG:HH12	1.86	0.41

*Continued on next page...*

Continued from previous page...

Atom-1	Atom-2	Interatomic distance (Å)	Clash overlap (Å)
1:A:103:GLU:HA	1:A:136:LEU:HD23	2.03	0.41
1:A:306:PHE:HD1	1:B:245:ASN:H	1.69	0.41
1:B:241:SER:HA	1:B:255:LEU:HD12	2.02	0.41
2:E:65:PHE:HB2	2:E:86:ARG:HH12	1.86	0.41
2:E:310:TRP:HD1	2:E:311:LEU:HD22	1.86	0.41
1:D:42:ASN:OD1	1:D:65:ARG:HB2	2.21	0.41
1:A:221:GLY:HA3	2:E:302:SER:HB2	2.03	0.41
1:B:237:LEU:CD1	1:B:255:LEU:HD22	2.40	0.41
1:B:253:VAL:HG12	1:B:257:ILE:HG13	2.03	0.41
1:B:260:VAL:HG22	1:B:294:VAL:HG12	2.02	0.41
1:C:100:PHE:HB2	1:C:103:GLU:HB3	2.03	0.41
2:E:41:LEU:HD23	2:E:41:LEU:HA	1.91	0.41
2:E:186:THR:HG22	2:E:190:ARG:HH21	1.86	0.41
2:E:208:GLN:HG3	2:E:209:PHE:CD1	2.56	0.41
1:B:111:ILE:HD13	1:B:111:ILE:HA	1.89	0.41
1:C:140:MET:SD	1:C:150:GLN:NE2	2.92	0.41
1:C:144:ASN:HA	1:C:282:ALA:HB2	2.03	0.41
1:C:255:LEU:HA	1:C:258:THR:HG22	2.01	0.41
1:A:306:PHE:CE1	1:B:245:ASN:CB	3.04	0.40
1:C:64:LEU:HD11	1:C:98:LEU:HD11	2.03	0.40
1:C:170:TRP:NE1	1:C:210:ILE:HB	2.35	0.40
1:C:99:PHE:CD1	1:C:159:PHE:HB2	2.56	0.40
1:C:145:PHE:CE1	1:C:274:LEU:HD11	2.56	0.40
1:C:238:SER:O	1:C:241:SER:HB3	2.21	0.40
2:E:190:ARG:HE	2:E:190:ARG:HB3	1.71	0.40
1:A:402:PHE:CE1	7:A:507:HEX:H21	2.56	0.40
2:E:167:LEU:O	2:E:171:ASP:HB3	2.20	0.40
2:E:261:LEU:HD12	2:E:264:LEU:HD11	2.04	0.40
2:E:268:ILE:HG13	2:E:270:PRO:HD3	2.04	0.40
1:D:130:ILE:HD11	2:E:135:THR:HG22	2.03	0.40
1:A:186:GLN:HE21	2:E:300:LYS:CD	2.34	0.40
2:E:329:GLN:HA	2:E:332:LEU:CD2	2.51	0.40

There are no symmetry-related clashes.

## 5.3 Torsion angles [i](#)

### 5.3.1 Protein backbone [i](#)

In the following table, the Percentiles column shows the percent Ramachandran outliers of the chain as a percentile score with respect to all PDB entries followed by that with respect to all EM

entries.

The Analysed column shows the number of residues for which the backbone conformation was analysed, and the total number of residues.

Mol	Chain	Analysed	Favoured	Allowed	Outliers	Percentiles	
1	A	337/367 (92%)	318 (94%)	19 (6%)	0	100	100
1	B	332/367 (90%)	309 (93%)	22 (7%)	1 (0%)	41	74
1	C	332/367 (90%)	311 (94%)	20 (6%)	1 (0%)	41	74
1	D	336/367 (92%)	308 (92%)	27 (8%)	1 (0%)	41	74
2	E	327/680 (48%)	309 (94%)	18 (6%)	0	100	100
All	All	1664/2148 (78%)	1555 (93%)	106 (6%)	3 (0%)	50	79

All (3) Ramachandran outliers are listed below:

Mol	Chain	Res	Type
1	B	273	SER
1	C	186	GLN
1	D	62	ILE

### 5.3.2 Protein sidechains [i](#)

In the following table, the Percentiles column shows the percent sidechain outliers of the chain as a percentile score with respect to all PDB entries followed by that with respect to all EM entries.

The Analysed column shows the number of residues for which the sidechain conformation was analysed, and the total number of residues.

Mol	Chain	Analysed	Rotameric	Outliers	Percentiles	
1	A	306/328 (93%)	304 (99%)	2 (1%)	84	92
1	B	301/328 (92%)	292 (97%)	9 (3%)	41	70
1	C	300/328 (92%)	297 (99%)	3 (1%)	76	88
1	D	305/328 (93%)	301 (99%)	4 (1%)	69	85
2	E	299/598 (50%)	296 (99%)	3 (1%)	76	88
All	All	1511/1910 (79%)	1490 (99%)	21 (1%)	68	84

All (21) residues with a non-rotameric sidechain are listed below:

Mol	Chain	Res	Type
1	D	37	VAL

*Continued on next page...*

*Continued from previous page...*

Mol	Chain	Res	Type
1	D	38	ASN
1	D	63	PHE
1	D	208	THR
1	A	37	VAL
1	A	63	PHE
1	B	38	ASN
1	B	252	ARG
1	B	258	THR
1	B	260	VAL
1	B	264	THR
1	B	265	THR
1	B	267	SER
1	B	270	SER
1	B	300	GLU
1	C	37	VAL
1	C	63	PHE
1	C	411	MET
2	E	167	LEU
2	E	221	CYS
2	E	332	LEU

Sometimes sidechains can be flipped to improve hydrogen bonding and reduce clashes. All (2) such sidechains are listed below:

Mol	Chain	Res	Type
1	A	186	GLN
2	E	333	ASN

### 5.3.3 RNA [i](#)

There are no RNA molecules in this entry.

### 5.4 Non-standard residues in protein, DNA, RNA chains [i](#)

There are no non-standard protein/DNA/RNA residues in this entry.

### 5.5 Carbohydrates [i](#)

There are no monosaccharides in this entry.

## 5.6 Ligand geometry

52 ligands are modelled in this entry.

In the following table, the Counts columns list the number of bonds (or angles) for which Mogul statistics could be retrieved, the number of bonds (or angles) that are observed in the model and the number of bonds (or angles) that are defined in the Chemical Component Dictionary. The Link column lists molecule types, if any, to which the group is linked. The Z score for a bond length (or angle) is the number of standard deviations the observed value is removed from the expected value. A bond length (or angle) with  $|Z| > 2$  is considered an outlier worth inspection. RMSZ is the root-mean-square of all Z scores of the bond lengths (or angles).

Mol	Type	Chain	Res	Link	Bond lengths			Bond angles		
					Counts	RMSZ	# Z  > 2	Counts	RMSZ	# Z  > 2
7	HEX	D	509	-	5,5,5	0.14	0	4,4,4	0.13	0
7	HEX	A	507	-	5,5,5	0.15	0	4,4,4	0.13	0
6	HP6	C	503	-	6,6,6	0.13	0	5,5,5	0.12	0
4	NAG	D	502	1	14,14,15	0.33	0	17,19,21	0.88	1 (5%)
7	HEX	B	511	-	5,5,5	0.15	0	4,4,4	0.13	0
7	HEX	C	507	-	5,5,5	0.15	0	4,4,4	0.13	0
8	UND	A	503	-	10,10,10	0.10	0	9,9,9	0.09	0
8	UND	A	512	-	10,10,10	0.10	0	9,9,9	0.09	0
9	NBU	A	510	-	3,3,3	0.24	0	2,2,2	0.41	0
6	HP6	D	506	-	6,6,6	0.14	0	5,5,5	0.12	0
7	HEX	B	505	-	5,5,5	0.15	0	4,4,4	0.13	0
3	GLY	B	503	-	4,4,4	1.11	1 (25%)	3,4,4	1.65	1 (33%)
9	NBU	E	501	-	3,3,3	0.24	0	2,2,2	0.41	0
8	UND	A	504	-	10,10,10	0.11	0	9,9,9	0.09	0
3	GLY	A	501	-	4,4,4	1.12	1 (25%)	3,4,4	1.64	1 (33%)
9	NBU	B	509	-	3,3,3	0.17	0	2,2,2	0.51	0
3	GLY	C	501	-	4,4,4	1.12	1 (25%)	3,4,4	1.65	1 (33%)
9	NBU	B	507	-	3,3,3	0.24	0	2,2,2	0.41	0
7	HEX	C	506	-	5,5,5	0.15	0	4,4,4	0.13	0
4	NAG	C	502	-	14,14,15	0.36	0	17,19,21	0.82	0
7	HEX	B	506	-	5,5,5	0.15	0	4,4,4	0.13	0
5	DD9	A	505	-	8,8,8	0.12	0	7,7,7	0.10	0
10	D10	B	501	-	9,9,9	0.12	0	8,8,8	0.14	0
7	HEX	E	508	-	5,5,5	0.15	0	4,4,4	0.13	0
10	D10	B	508	-	9,9,9	0.12	0	8,8,8	0.14	0
7	HEX	E	509	-	5,5,5	0.15	0	4,4,4	0.13	0
8	UND	D	512	-	10,10,10	0.11	0	9,9,9	0.09	0
6	HP6	A	506	-	6,6,6	0.13	0	5,5,5	0.12	0
7	HEX	D	511	-	5,5,5	0.15	0	4,4,4	0.13	0
6	HP6	D	504	-	6,6,6	0.13	0	5,5,5	0.12	0
4	NAG	E	503	2	14,14,15	0.37	0	17,19,21	0.91	1 (5%)

Mol	Type	Chain	Res	Link	Bond lengths			Bond angles		
					Counts	RMSZ	# Z  > 2	Counts	RMSZ	# Z  > 2
8	UND	A	511	-	10,10,10	0.11	0	9,9,9	0.09	0
5	DD9	B	502	-	8,8,8	0.12	0	7,7,7	0.10	0
3	GLY	E	502	-	4,4,4	1.16	1 (25%)	3,4,4	1.65	1 (33%)
7	HEX	D	510	-	5,5,5	0.14	0	4,4,4	0.13	0
11	OCT	E	507	-	7,7,7	0.12	0	6,6,6	0.11	0
11	OCT	E	506	-	7,7,7	0.12	0	6,6,6	0.11	0
3	GLY	D	501	-	4,4,4	1.21	1 (25%)	3,4,4	1.18	0
9	NBU	B	510	-	3,3,3	0.24	0	2,2,2	0.41	0
10	D10	E	504	-	9,9,9	0.12	0	8,8,8	0.14	0
5	DD9	D	503	-	8,8,8	0.12	0	7,7,7	0.10	0
6	HP6	C	504	-	6,6,6	0.13	0	5,5,5	0.12	0
9	NBU	A	508	-	3,3,3	0.24	0	2,2,2	0.41	0
5	DD9	A	509	-	8,8,8	0.12	0	7,7,7	0.10	0
7	HEX	D	508	-	5,5,5	0.14	0	4,4,4	0.13	0
9	NBU	C	505	-	3,3,3	0.24	0	2,2,2	0.41	0
8	UND	E	505	-	10,10,10	0.10	0	9,9,9	0.09	0
7	HEX	D	505	-	5,5,5	0.15	0	4,4,4	0.13	0
9	NBU	C	508	-	3,3,3	0.16	0	2,2,2	0.52	0
6	HP6	D	507	-	6,6,6	0.14	0	5,5,5	0.12	0
4	NAG	B	504	1	14,14,15	0.30	0	17,19,21	1.19	2 (11%)
4	NAG	A	502	1	14,14,15	0.50	0	17,19,21	1.32	2 (11%)

In the following table, the Chirals column lists the number of chiral outliers, the number of chiral centers analysed, the number of these observed in the model and the number defined in the Chemical Component Dictionary. Similar counts are reported in the Torsion and Rings columns. '-' means no outliers of that kind were identified.

Mol	Type	Chain	Res	Link	Chirals	Torsions	Rings
7	HEX	D	509	-	-	0/3/3/3	-
7	HEX	A	507	-	-	0/3/3/3	-
6	HP6	C	503	-	-	0/4/4/4	-
4	NAG	D	502	1	-	3/6/23/26	0/1/1/1
7	HEX	B	511	-	-	0/3/3/3	-
7	HEX	C	507	-	-	0/3/3/3	-
8	UND	A	503	-	-	0/8/8/8	-
8	UND	A	512	-	-	0/8/8/8	-
9	NBU	A	510	-	-	0/1/1/1	-
6	HP6	D	506	-	-	0/4/4/4	-
7	HEX	B	505	-	-	0/3/3/3	-
3	GLY	B	503	-	-	2/2/2/2	-
9	NBU	E	501	-	-	0/1/1/1	-

Continued on next page...

*Continued from previous page...*

Mol	Type	Chain	Res	Link	Chirals	Torsions	Rings
8	UND	A	504	-	-	0/8/8/8	-
3	GLY	A	501	-	-	2/2/2/2	-
9	NBU	B	509	-	-	1/1/1/1	-
3	GLY	C	501	-	-	2/2/2/2	-
9	NBU	B	507	-	-	0/1/1/1	-
7	HEX	C	506	-	-	0/3/3/3	-
4	NAG	C	502	-	-	4/6/23/26	0/1/1/1
7	HEX	B	506	-	-	0/3/3/3	-
5	DD9	A	505	-	-	0/6/6/6	-
10	D10	B	501	-	-	0/7/7/7	-
7	HEX	E	508	-	-	0/3/3/3	-
10	D10	B	508	-	-	0/7/7/7	-
7	HEX	E	509	-	-	0/3/3/3	-
8	UND	D	512	-	-	0/8/8/8	-
6	HP6	A	506	-	-	0/4/4/4	-
7	HEX	D	511	-	-	0/3/3/3	-
6	HP6	D	504	-	-	0/4/4/4	-
4	NAG	E	503	2	-	0/6/23/26	0/1/1/1
8	UND	A	511	-	-	0/8/8/8	-
5	DD9	B	502	-	-	0/6/6/6	-
3	GLY	E	502	-	-	2/2/2/2	-
7	HEX	D	510	-	-	0/3/3/3	-
11	OCT	E	507	-	-	0/5/5/5	-
11	OCT	E	506	-	-	0/5/5/5	-
3	GLY	D	501	-	-	1/2/2/2	-
9	NBU	B	510	-	-	0/1/1/1	-
10	D10	E	504	-	-	0/7/7/7	-
5	DD9	D	503	-	-	0/6/6/6	-
6	HP6	C	504	-	-	0/4/4/4	-
9	NBU	A	508	-	-	0/1/1/1	-
5	DD9	A	509	-	-	0/6/6/6	-
7	HEX	D	508	-	-	0/3/3/3	-
9	NBU	C	505	-	-	0/1/1/1	-
8	UND	E	505	-	-	0/8/8/8	-
7	HEX	D	505	-	-	0/3/3/3	-
9	NBU	C	508	-	-	1/1/1/1	-
6	HP6	D	507	-	-	0/4/4/4	-
4	NAG	B	504	1	-	4/6/23/26	0/1/1/1
4	NAG	A	502	1	-	4/6/23/26	0/1/1/1

All (5) bond length outliers are listed below:

Mol	Chain	Res	Type	Atoms	Z	Observed(Å)	Ideal(Å)
3	D	501	GLY	OXT-C	-2.29	1.23	1.30
3	E	502	GLY	OXT-C	-2.18	1.23	1.30
3	A	501	GLY	OXT-C	-2.15	1.23	1.30
3	C	501	GLY	OXT-C	-2.14	1.23	1.30
3	B	503	GLY	OXT-C	-2.12	1.23	1.30

All (10) bond angle outliers are listed below:

Mol	Chain	Res	Type	Atoms	Z	Observed(°)	Ideal(°)
4	B	504	NAG	C1-O5-C5	3.67	117.16	112.19
4	A	502	NAG	C1-O5-C5	-3.05	108.06	112.19
4	B	504	NAG	O5-C1-C2	-2.72	106.99	111.29
4	A	502	NAG	C3-C4-C5	2.72	115.09	110.24
4	E	503	NAG	C1-O5-C5	-2.67	108.58	112.19
3	B	503	GLY	OXT-C-O	-2.13	118.00	123.30
3	C	501	GLY	OXT-C-O	-2.11	118.04	123.30
3	E	502	GLY	OXT-C-O	-2.10	118.07	123.30
3	A	501	GLY	OXT-C-O	-2.09	118.10	123.30
4	D	502	NAG	C1-C2-N2	-2.05	106.98	110.49

There are no chirality outliers.

All (26) torsion outliers are listed below:

Mol	Chain	Res	Type	Atoms
3	A	501	GLY	O-C-CA-N
3	A	501	GLY	OXT-C-CA-N
3	B	503	GLY	O-C-CA-N
3	B	503	GLY	OXT-C-CA-N
3	C	501	GLY	O-C-CA-N
3	C	501	GLY	OXT-C-CA-N
4	D	502	NAG	C3-C2-N2-C7
4	D	502	NAG	C8-C7-N2-C2
4	D	502	NAG	O7-C7-N2-C2
4	A	502	NAG	C3-C2-N2-C7
4	A	502	NAG	C8-C7-N2-C2
4	A	502	NAG	O7-C7-N2-C2
4	B	504	NAG	C8-C7-N2-C2
4	B	504	NAG	O7-C7-N2-C2
4	C	502	NAG	C8-C7-N2-C2
4	C	502	NAG	O7-C7-N2-C2
9	B	509	NBU	C1-C2-C3-C4
9	C	508	NBU	C1-C2-C3-C4

*Continued on next page...*



*Continued from previous page...*

Mol	Chain	Res	Type	Atoms
4	B	504	NAG	C1-C2-N2-C7
4	C	502	NAG	C1-C2-N2-C7
3	E	502	GLY	OXT-C-CA-N
4	B	504	NAG	O5-C5-C6-O6
4	C	502	NAG	C3-C2-N2-C7
3	D	501	GLY	O-C-CA-N
3	E	502	GLY	O-C-CA-N
4	A	502	NAG	C1-C2-N2-C7

There are no ring outliers.

22 monomers are involved in 92 short contacts:

Mol	Chain	Res	Type	Clashes	Symm-Clashes
7	A	507	HEX	1	0
8	A	503	UND	2	0
6	D	506	HP6	9	0
3	B	503	GLY	11	0
3	A	501	GLY	9	0
3	C	501	GLY	1	0
9	B	507	NBU	2	0
7	C	506	HEX	1	0
5	A	505	DD9	1	0
10	B	501	D10	5	0
7	E	508	HEX	6	0
10	B	508	D10	2	0
8	D	512	UND	4	0
6	D	504	HP6	6	0
3	E	502	GLY	2	0
7	D	510	HEX	1	0
11	E	506	OCT	1	0
3	D	501	GLY	3	0
6	C	504	HP6	13	0
5	A	509	DD9	6	0
9	C	508	NBU	1	0
6	D	507	HP6	6	0

## 5.7 Other polymers [i](#)

There are no such residues in this entry.

## 5.8 Polymer linkage issues

There are no chain breaks in this entry.

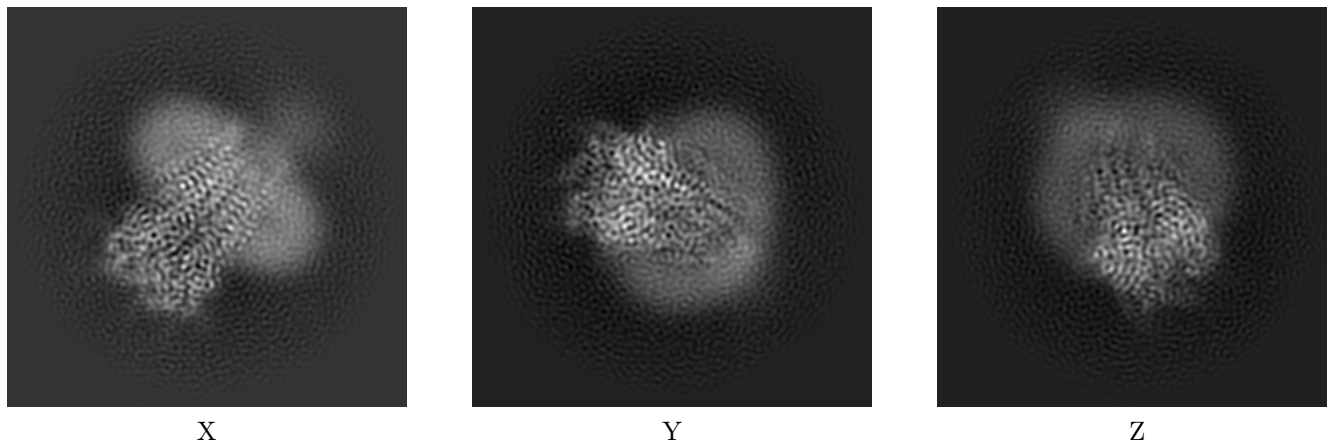
## 6 Map visualisation [i](#)

This section contains visualisations of the EMDB entry EMD-27555. These allow visual inspection of the internal detail of the map and identification of artifacts.

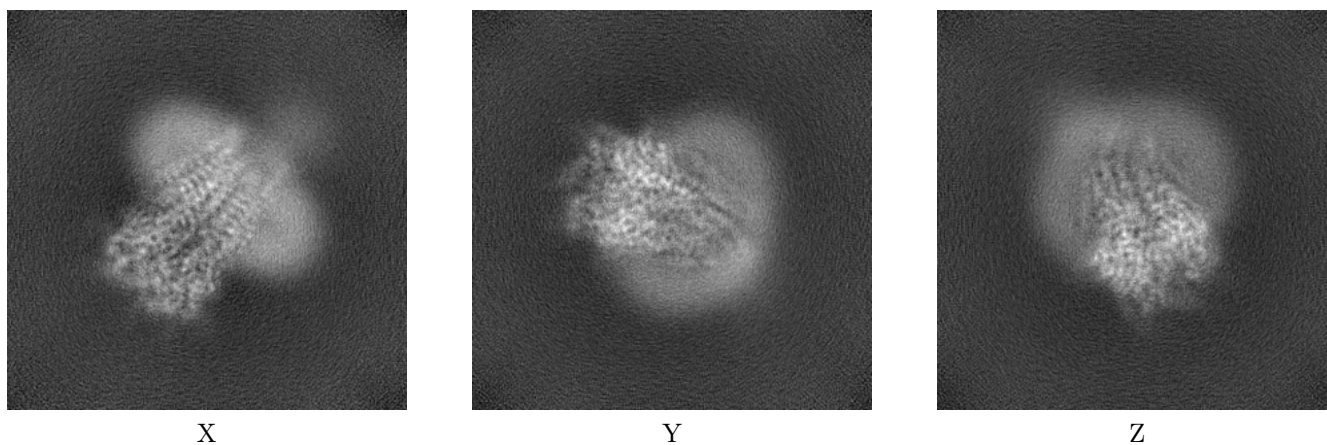
Images derived from a raw map, generated by summing the deposited half-maps, are presented below the corresponding image components of the primary map to allow further visual inspection and comparison with those of the primary map.

### 6.1 Orthogonal projections [i](#)

#### 6.1.1 Primary map



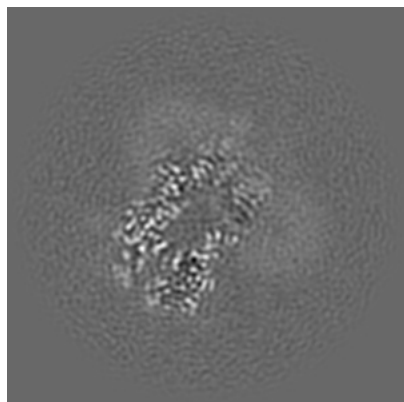
#### 6.1.2 Raw map



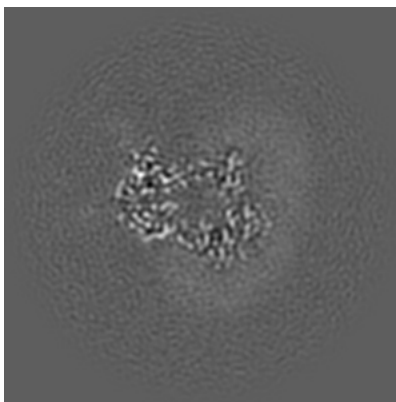
The images above show the map projected in three orthogonal directions.

## 6.2 Central slices [i](#)

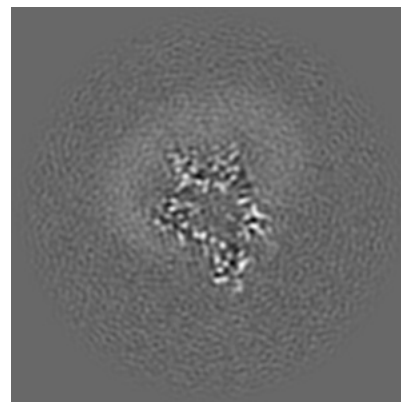
### 6.2.1 Primary map



X Index: 144

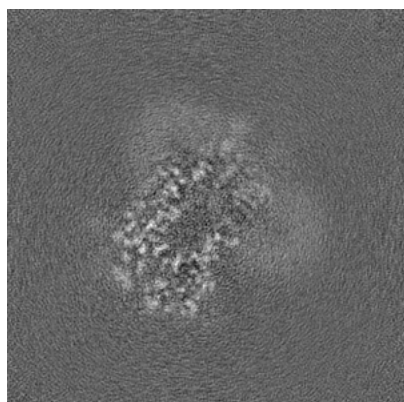


Y Index: 144

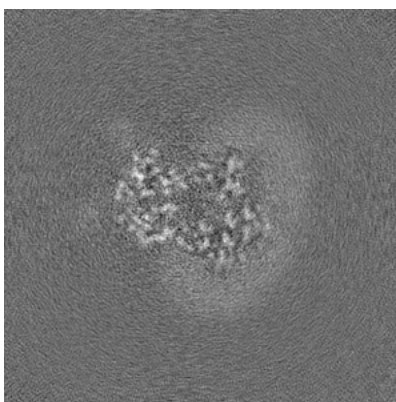


Z Index: 144

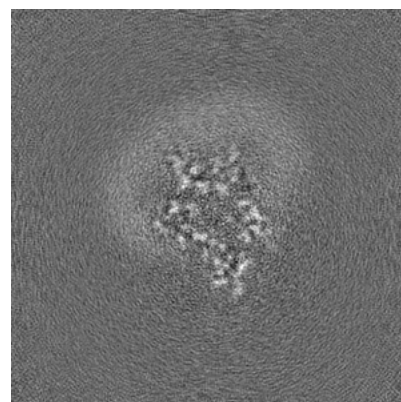
### 6.2.2 Raw map



X Index: 144



Y Index: 144

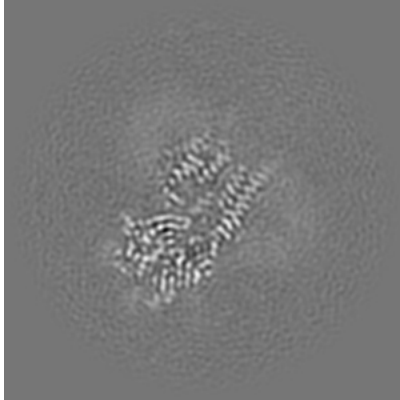


Z Index: 144

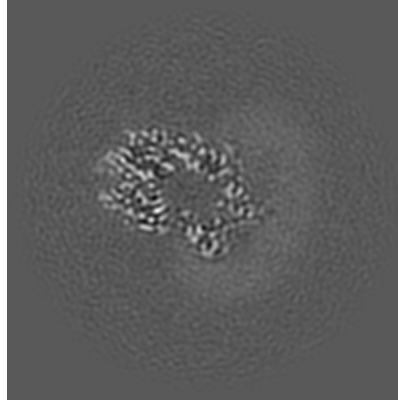
The images above show central slices of the map in three orthogonal directions.

## 6.3 Largest variance slices [i](#)

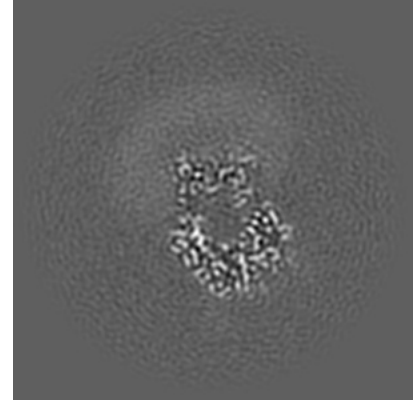
### 6.3.1 Primary map



X Index: 133

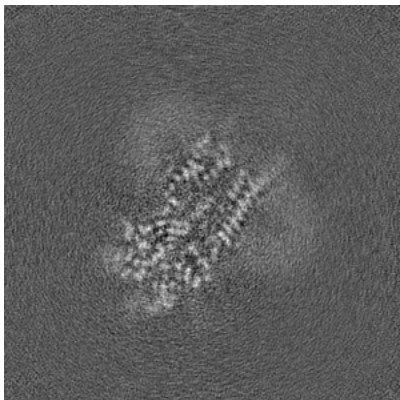


Y Index: 133

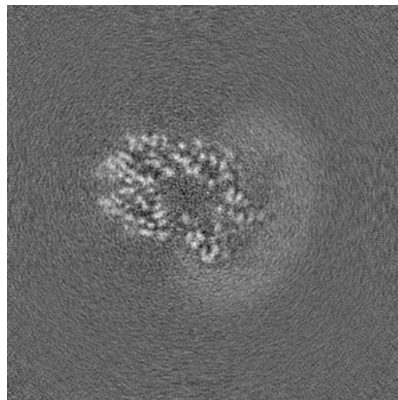


Z Index: 125

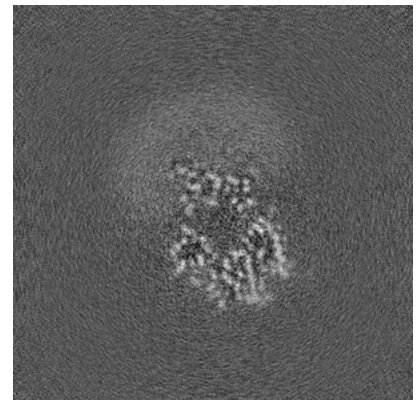
### 6.3.2 Raw map



X Index: 132



Y Index: 133



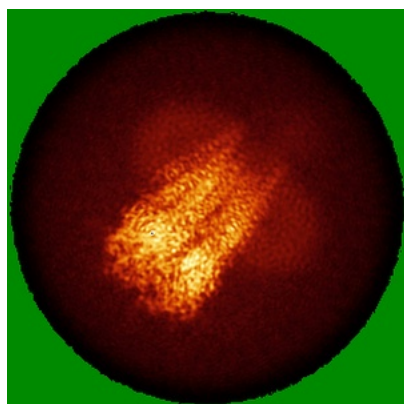
Z Index: 121

The images above show the largest variance slices of the map in three orthogonal directions.

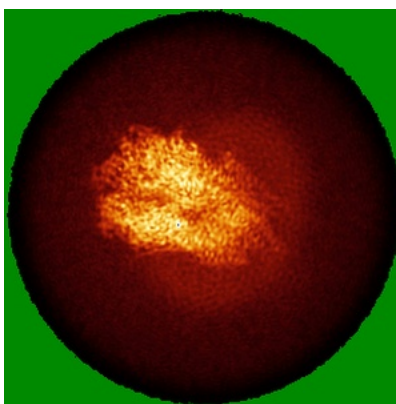


## 6.4 Orthogonal standard-deviation projections (False-color) [i](#)

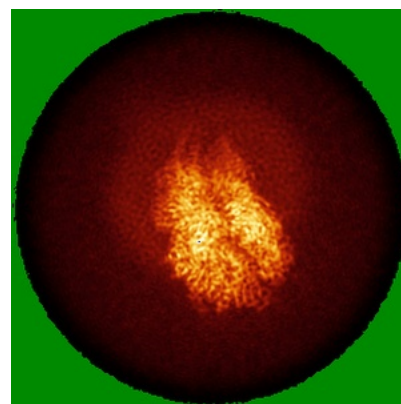
### 6.4.1 Primary map



X

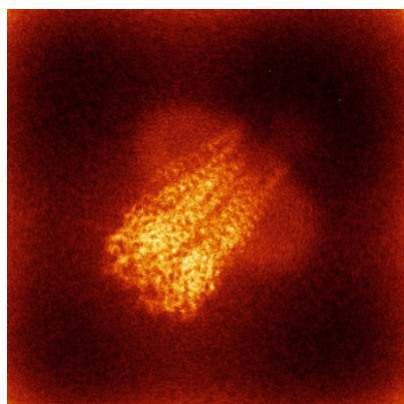


Y

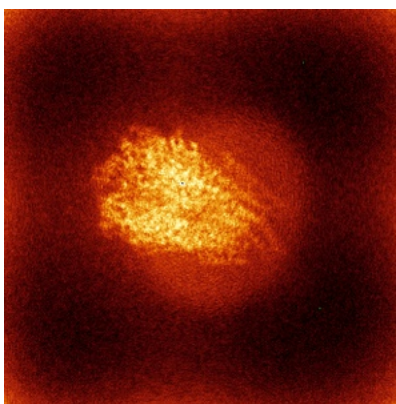


Z

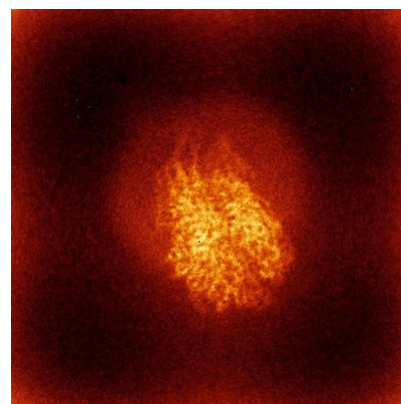
### 6.4.2 Raw map



X



Y

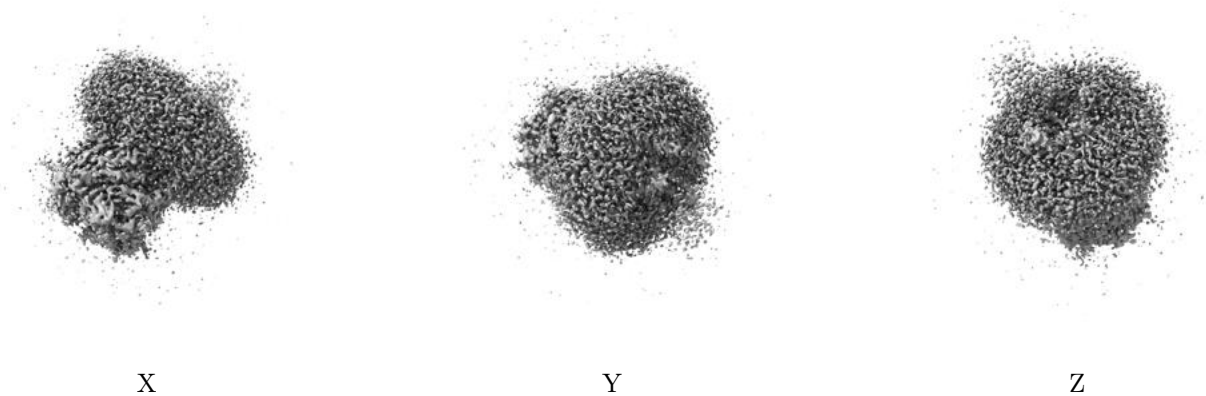


Z

The images above show the map standard deviation projections with false color in three orthogonal directions. Minimum values are shown in green, max in blue, and dark to light orange shades represent small to large values respectively.

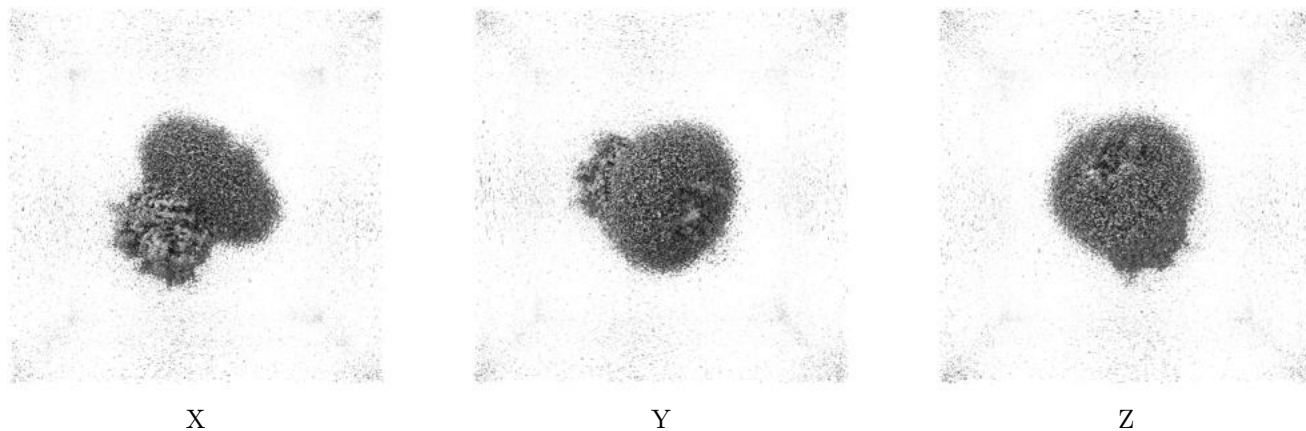
## 6.5 Orthogonal surface views [i](#)

### 6.5.1 Primary map



The images above show the 3D surface view of the map at the recommended contour level 0.26. These images, in conjunction with the slice images, may facilitate assessment of whether an appropriate contour level has been provided.

### 6.5.2 Raw map



These images show the 3D surface of the raw map. The raw map's contour level was selected so that its surface encloses the same volume as the primary map does at its recommended contour level.

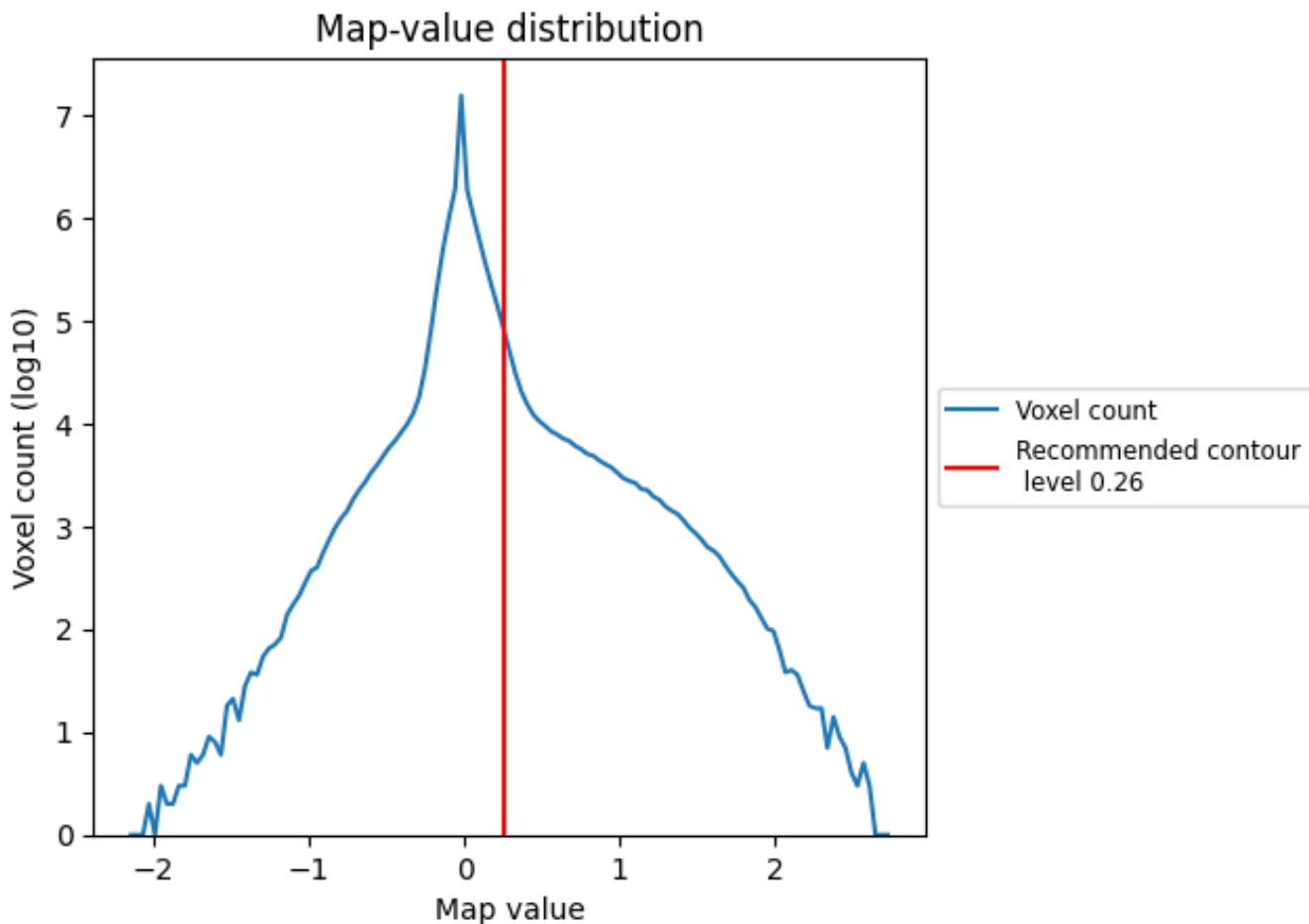
## 6.6 Mask visualisation [i](#)

This section was not generated. No masks/segmentation were deposited.

## 7 Map analysis [i](#)

This section contains the results of statistical analysis of the map.

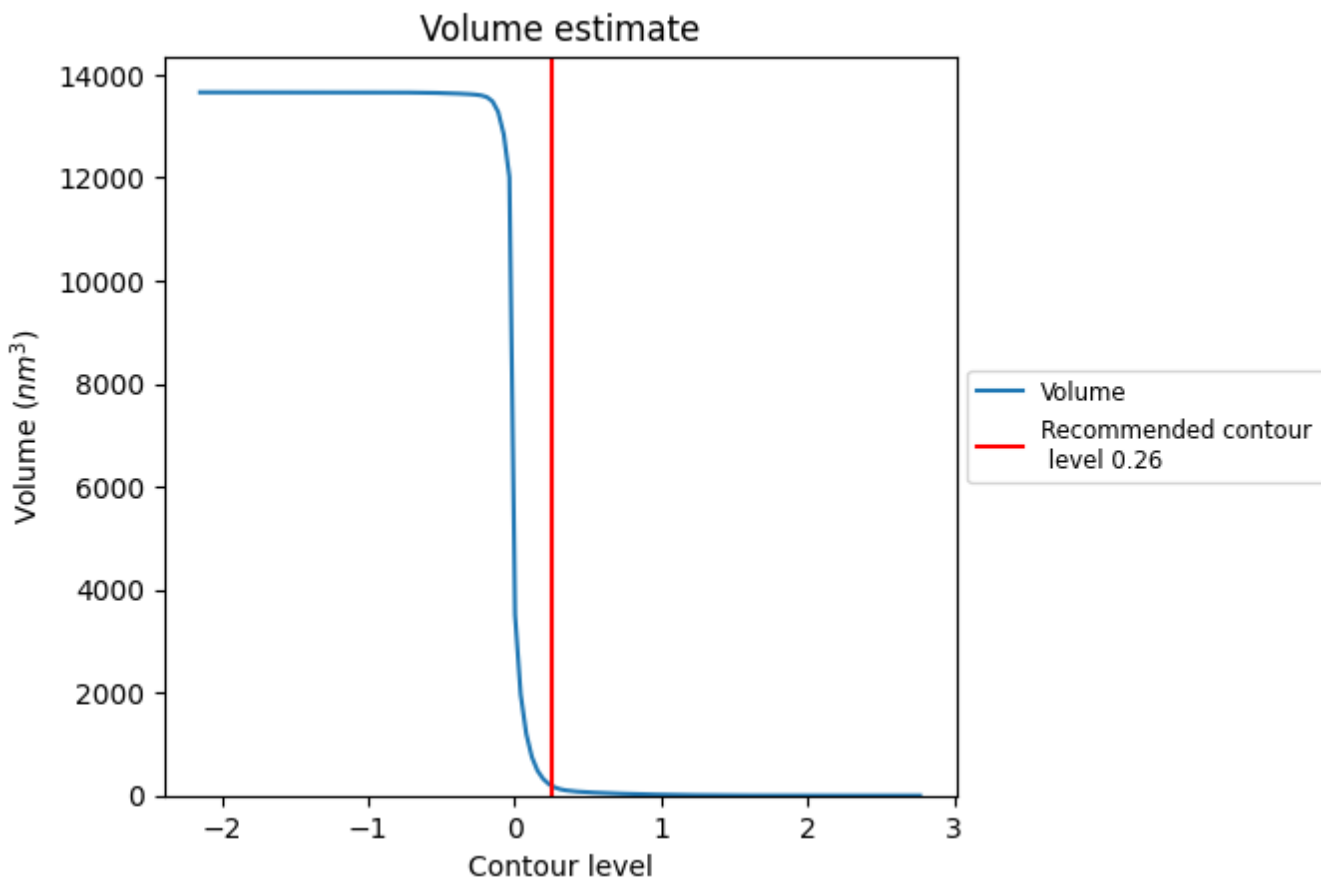
### 7.1 Map-value distribution [i](#)



The map-value distribution is plotted in 128 intervals along the x-axis. The y-axis is logarithmic. A spike in this graph at zero usually indicates that the volume has been masked.



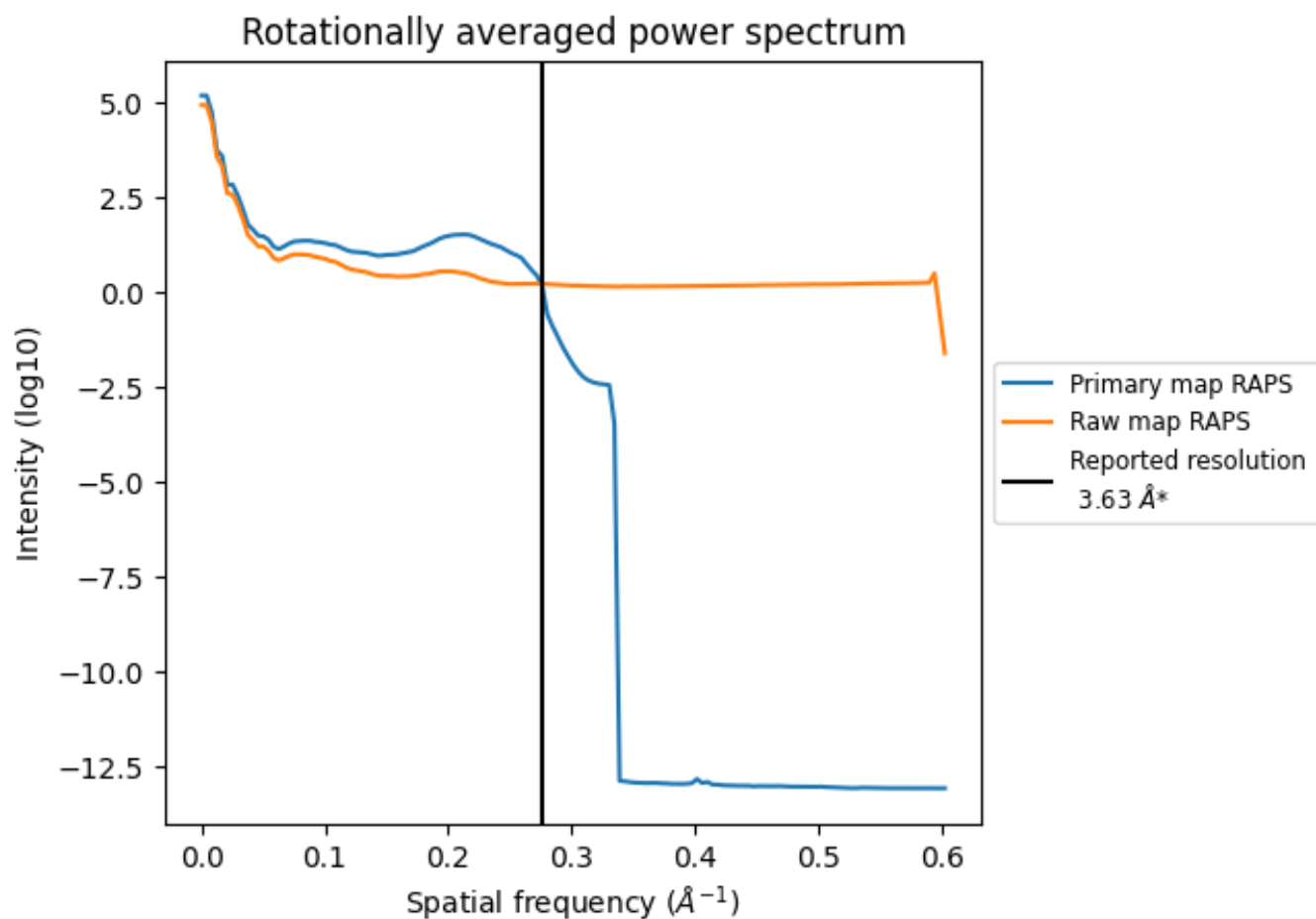
## 7.2 Volume estimate [i](#)



The volume at the recommended contour level is 180 nm<sup>3</sup>; this corresponds to an approximate mass of 163 kDa.

The volume estimate graph shows how the enclosed volume varies with the contour level. The recommended contour level is shown as a vertical line and the intersection between the line and the curve gives the volume of the enclosed surface at the given level.

### 7.3 Rotationally averaged power spectrum [i](#)

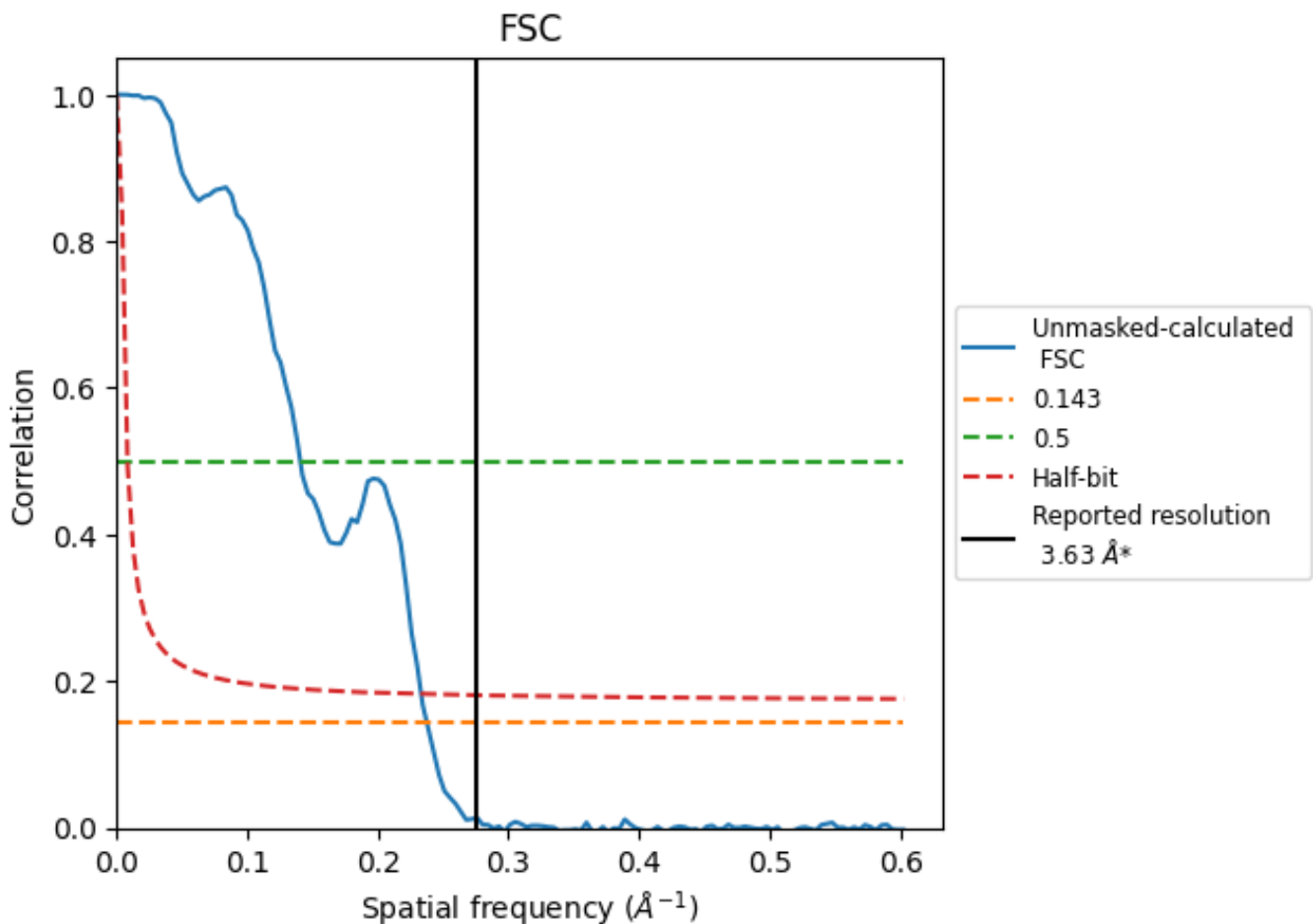


\*Reported resolution corresponds to spatial frequency of 0.275 Å<sup>-1</sup>

## 8 Fourier-Shell correlation [i](#)

Fourier-Shell Correlation (FSC) is the most commonly used method to estimate the resolution of single-particle and subtomogram-averaged maps. The shape of the curve depends on the imposed symmetry, mask and whether or not the two 3D reconstructions used were processed from a common reference. The reported resolution is shown as a black line. A curve is displayed for the half-bit criterion in addition to lines showing the 0.143 gold standard cut-off and 0.5 cut-off.

### 8.1 FSC [i](#)



\*Reported resolution corresponds to spatial frequency of 0.275 Å<sup>-1</sup>

## 8.2 Resolution estimates [i](#)

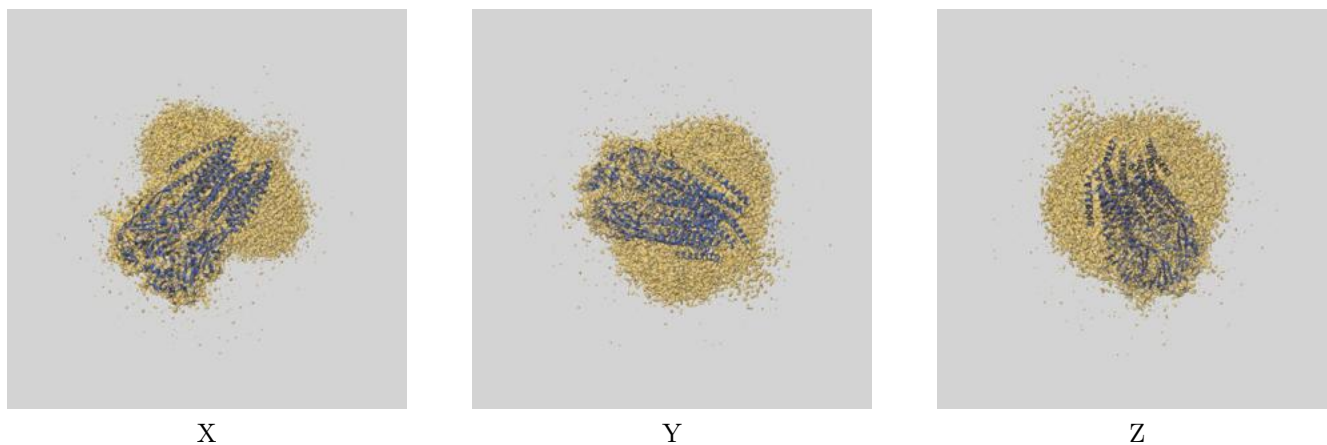
Resolution estimate (Å)	Estimation criterion (FSC cut-off)		
	0.143	0.5	Half-bit
Reported by author	3.63	-	-
Author-provided FSC curve	-	-	-
Unmasked-calculated*	4.21	7.11	4.29

\*Resolution estimate based on FSC curve calculated by comparison of deposited half-maps. The value from deposited half-maps intersecting FSC 0.143 CUT-OFF 4.21 differs from the reported value 3.63 by more than 10 %

## 9 Map-model fit [i](#)

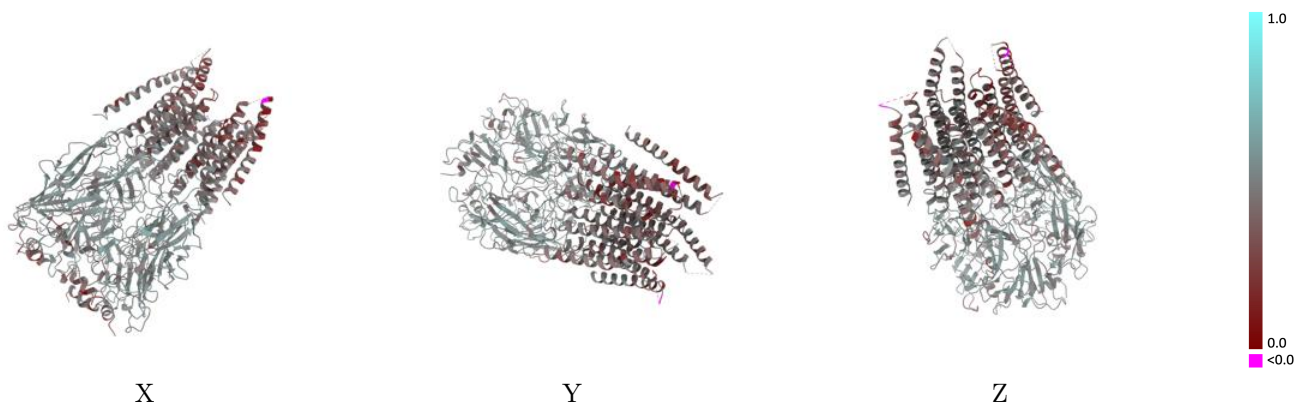
This section contains information regarding the fit between EMDB map EMD-27555 and PDB model 8DN5. Per-residue inclusion information can be found in section 3 on page 19.

### 9.1 Map-model overlay [i](#)



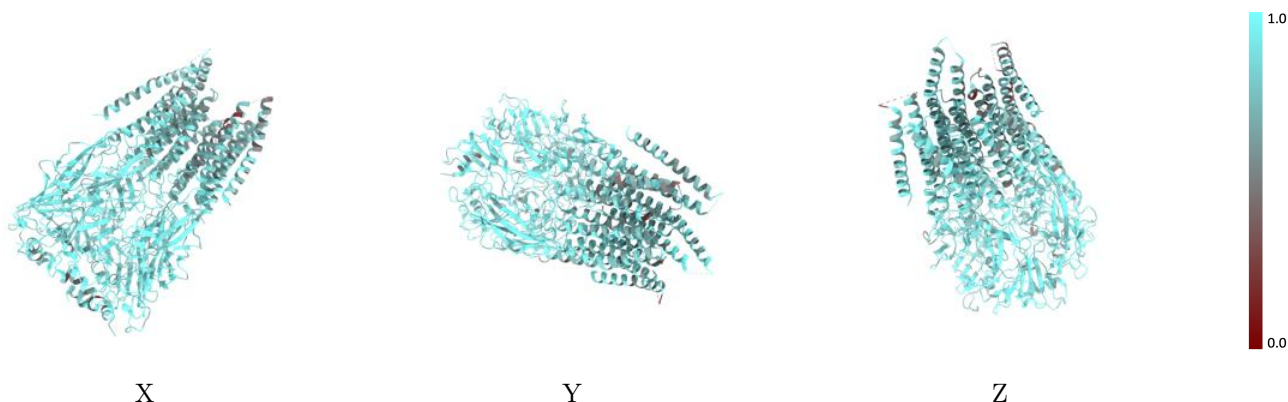
The images above show the 3D surface view of the map at the recommended contour level 0.26 at 50% transparency in yellow overlaid with a ribbon representation of the model coloured in blue. These images allow for the visual assessment of the quality of fit between the atomic model and the map.

## 9.2 Q-score mapped to coordinate model [i](#)



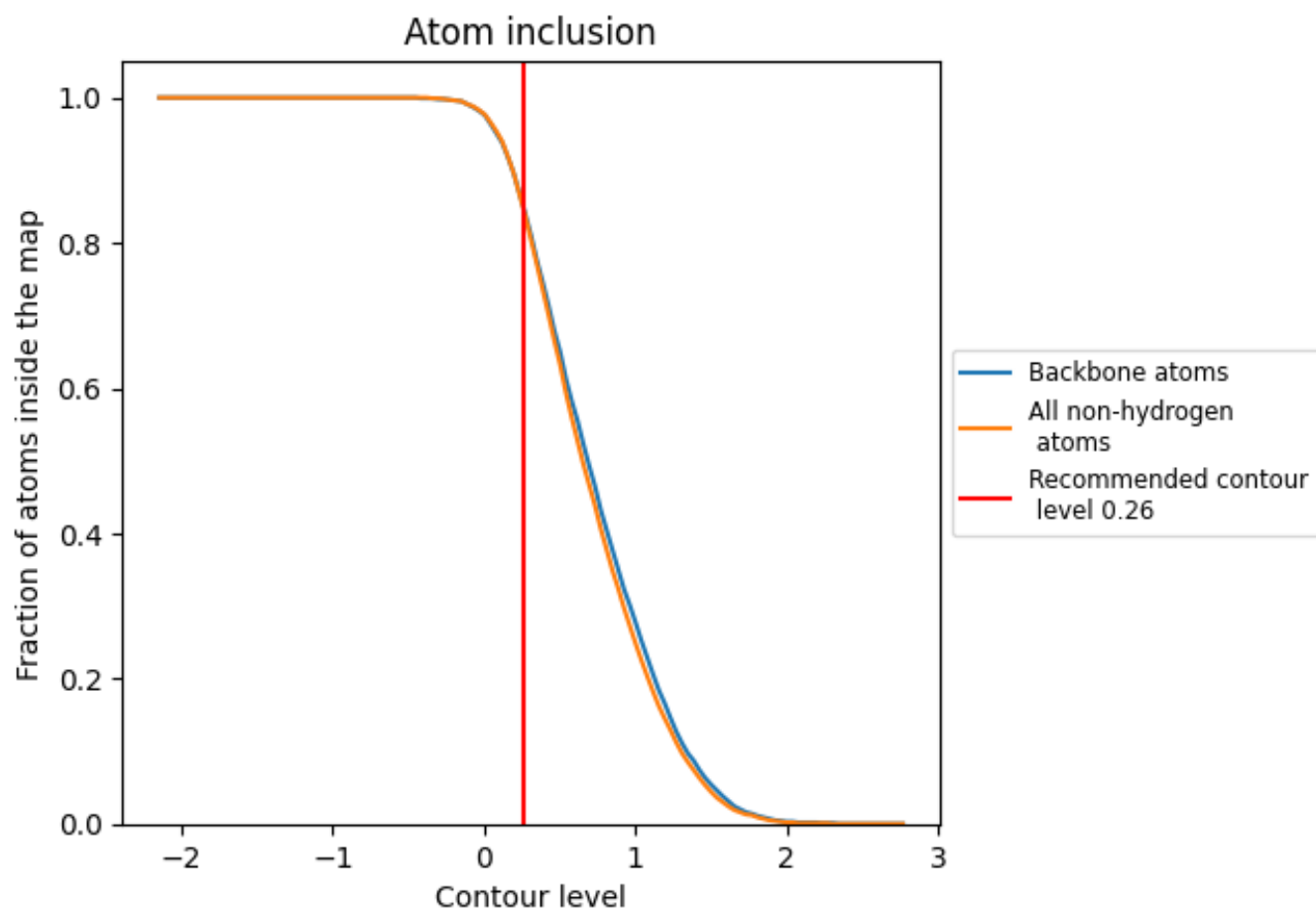
The images above show the model with each residue coloured according to its Q-score. This shows their resolvability in the map with higher Q-score values reflecting better resolvability. Please note: Q-score is calculating the resolvability of atoms, and thus high values are only expected at resolutions at which atoms can be resolved. Low Q-score values may therefore be expected for many entries.

## 9.3 Atom inclusion mapped to coordinate model [i](#)



The images above show the model with each residue coloured according to its atom inclusion. This shows to what extent they are inside the map at the recommended contour level (0.26).













## 9.4 Atom inclusion [i](#)



At the recommended contour level, 85% of all backbone atoms, 85% of all non-hydrogen atoms, are inside the map.

## 9.5 Map-model fit summary

The table lists the average atom inclusion at the recommended contour level (0.26) and Q-score for the entire model and for each chain.

Chain	Atom inclusion	Q-score
All	 0.8460	 0.4620
A	 0.8680	 0.4770
B	 0.8300	 0.4450
C	 0.8450	 0.4570
D	 0.8640	 0.4710
E	 0.8390	 0.4620

