



# Full wwPDB X-ray Structure Validation Report ⓘ

Oct 6, 2023 – 01:12 AM EDT

PDB ID : 8FGJ  
Title : Structure of human neuronal nitric oxide synthase R354A/G357D mutant heme domain in complex with 6-(5-(2-(dimethylamino)ethyl)-2,3-difluorophenethyl)-4-methoxypyridin-2-amine  
Authors : Li, H.; Poulos, T.L.  
Deposited on : 2022-12-12  
Resolution : 2.15 Å(reported)

This is a Full wwPDB X-ray Structure Validation Report for a publicly released PDB entry.

We welcome your comments at [validation@mail.wwpdb.org](mailto:validation@mail.wwpdb.org)

A user guide is available at

<https://www.wwpdb.org/validation/2017/XrayValidationReportHelp>

with specific help available everywhere you see the ⓘ symbol.

The types of validation reports are described at

<http://www.wwpdb.org/validation/2017/FAQs#types>.

---

The following versions of software and data (see [references ⓘ](#)) were used in the production of this report:

MolProbity : 4.02b-467  
Mogul : 1.8.5 (274361), CSD as541be (2020)  
Xtrriage (Phenix) : 1.13  
EDS : 2.35.1  
buster-report : 1.1.7 (2018)  
Percentile statistics : 20191225.v01 (using entries in the PDB archive December 25th 2019)  
Refmac : 5.8.0158  
CCP4 : 7.0.044 (Gargrove)  
Ideal geometry (proteins) : Engh & Huber (2001)  
Ideal geometry (DNA, RNA) : Parkinson et al. (1996)  
Validation Pipeline (wwPDB-VP) : 2.35.1

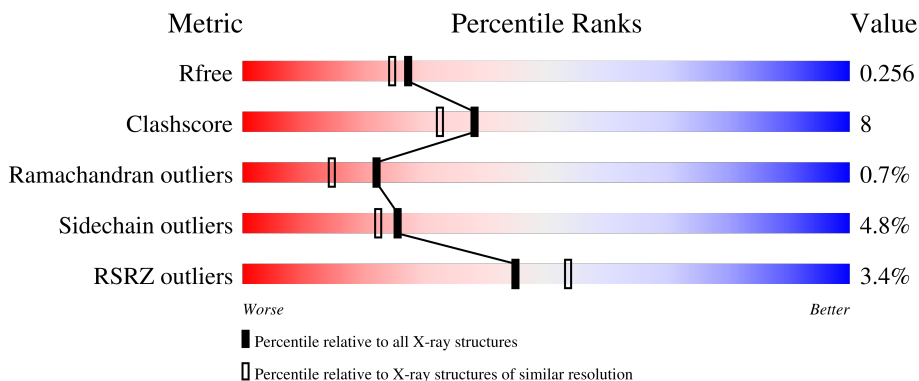
# 1 Overall quality at a glance

The following experimental techniques were used to determine the structure:

*X-RAY DIFFRACTION*

The reported resolution of this entry is 2.15 Å.

Percentile scores (ranging between 0-100) for global validation metrics of the entry are shown in the following graphic. The table shows the number of entries on which the scores are based.



Metric	Whole archive (#Entries)	Similar resolution (#Entries, resolution range(Å))
$R_{free}$	130704	1479 (2.16-2.16)
Clashscore	141614	1585 (2.16-2.16)
Ramachandran outliers	138981	1560 (2.16-2.16)
Sidechain outliers	138945	1559 (2.16-2.16)
RSRZ outliers	127900	1456 (2.16-2.16)

The table below summarises the geometric issues observed across the polymeric chains and their fit to the electron density. The red, orange, yellow and green segments of the lower bar indicate the fraction of residues that contain outliers for  $\geq 3$ , 2, 1 and 0 types of geometric quality criteria respectively. A grey segment represents the fraction of residues that are not modelled. The numeric value for each fraction is indicated below the corresponding segment, with a dot representing fractions  $\leq 5\%$ . The upper red bar (where present) indicates the fraction of residues that have poor fit to the electron density. The numeric value is given above the bar.

Mol	Chain	Length	Quality of chain
1	A	423	 5% 74% 21% ..
1	B	423	 % 78% 18% ..
1	C	423	 2% 80% 17% ..
1	D	423	 6% 75% 19% ..

The following table lists non-polymeric compounds, carbohydrate monomers and non-standard residues in protein, DNA, RNA chains that are outliers for geometric or electron-density-fit criteria:

<b>Mol</b>	<b>Type</b>	<b>Chain</b>	<b>Res</b>	<b>Chirality</b>	<b>Geometry</b>	<b>Clashes</b>	<b>Electron density</b>
5	GOL	A	804	-	-	-	X

## 2 Entry composition [i](#)

There are 7 unique types of molecules in this entry. The entry contains 14342 atoms, of which 0 are hydrogens and 0 are deuteriums.

In the tables below, the ZeroOcc column contains the number of atoms modelled with zero occupancy, the AltConf column contains the number of residues with at least one atom in alternate conformation and the Trace column contains the number of residues modelled with at most 2 atoms.

- Molecule 1 is a protein called Nitric oxide synthase, brain.

Mol	Chain	Residues	Atoms					ZeroOcc	AltConf	Trace
			Total	C	N	O	S			
1	A	409	3349	2147	570	610	22	0	4	0
1	B	413	3372	2159	574	618	21	0	2	0
1	C	417	3409	2185	578	624	22	0	4	0
1	D	410	3348	2145	571	611	21	0	2	0

There are 16 discrepancies between the modelled and reference sequences:

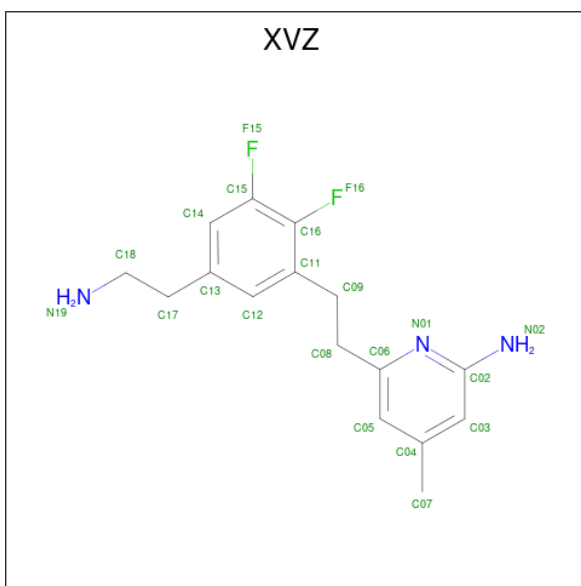
Chain	Residue	Modelled	Actual	Comment	Reference
A	354	ALA	ARG	engineered mutation	UNP P29475
A	357	ASP	GLY	engineered mutation	UNP P29475
A	723	LEU	-	expression tag	UNP P29475
A	724	VAL	-	expression tag	UNP P29475
B	354	ALA	ARG	engineered mutation	UNP P29475
B	357	ASP	GLY	engineered mutation	UNP P29475
B	723	LEU	-	expression tag	UNP P29475
B	724	VAL	-	expression tag	UNP P29475
C	354	ALA	ARG	engineered mutation	UNP P29475
C	357	ASP	GLY	engineered mutation	UNP P29475
C	723	LEU	-	expression tag	UNP P29475
C	724	VAL	-	expression tag	UNP P29475
D	354	ALA	ARG	engineered mutation	UNP P29475
D	357	ASP	GLY	engineered mutation	UNP P29475
D	723	LEU	-	expression tag	UNP P29475
D	724	VAL	-	expression tag	UNP P29475

- Molecule 2 is PROTOPORPHYRIN IX CONTAINING FE (three-letter code: HEM) (formula:  $C_{34}H_{32}FeN_4O_4$ ).



Mol	Chain	Residues	Atoms				ZeroOcc	AltConf
3	A	1	Total	C	N	O	0	0
			17	9	5	3		
3	B	1	Total	C	N	O	0	0
			17	9	5	3		
3	C	1	Total	C	N	O	0	0
			17	9	5	3		
3	D	1	Total	C	N	O	0	0
			17	9	5	3		

- Molecule 4 is 6-{2-[5-(2-aminoethyl)-2,3-difluorophenyl]ethyl}-4-methylpyridin-2-amine (three-letter code: XVZ) (formula: C<sub>16</sub>H<sub>19</sub>F<sub>2</sub>N<sub>3</sub>) (labeled as "Ligand of Interest" by depositor).



Mol	Chain	Residues	Atoms				ZeroOcc	AltConf
4	A	1	Total	C	F	N	0	0
			21	16	2	3		
4	B	1	Total	C	F	N	0	0
			21	16	2	3		
4	B	1	Total	C	F	N	0	0
			21	16	2	3		
4	C	1	Total	C	F	N	0	0
			21	16	2	3		
4	C	1	Total	C	F	N	0	0
			21	16	2	3		
4	D	1	Total	C	F	N	0	0
			21	16	2	3		

- Molecule 5 is GLYCEROL (three-letter code: GOL) (formula: C<sub>3</sub>H<sub>8</sub>O<sub>3</sub>).



Mol	Chain	Residues	Atoms	ZeroOcc	AltConf
5	A	1	Total C O 6 3 3	0	0
5	A	1	Total C O 6 3 3	0	0
5	B	1	Total C O 6 3 3	0	0
5	C	1	Total C O 6 3 3	0	0
5	C	1	Total C O 6 3 3	0	0
5	D	1	Total C O 6 3 3	0	0

- Molecule 6 is ZINC ION (three-letter code: ZN) (formula: Zn).

Mol	Chain	Residues	Atoms	ZeroOcc	AltConf
6	A	1	Total Zn 1 1	0	0
6	D	1	Total Zn 1 1	0	0

- Molecule 7 is water.

Mol	Chain	Residues	Atoms	ZeroOcc	AltConf
7	A	71	Total O 71 71	0	0

*Continued on next page...*

*Continued from previous page...*

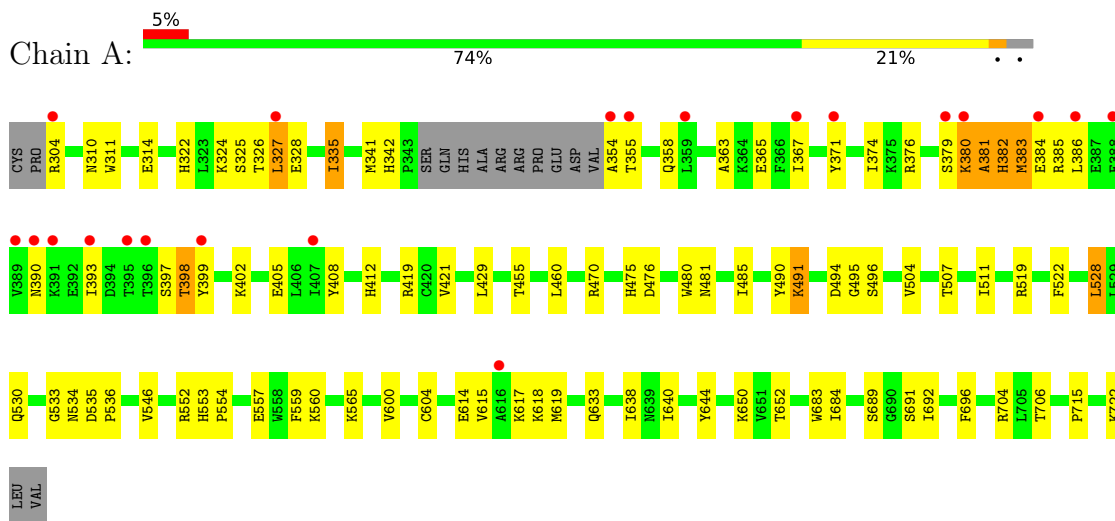
<b>Mol</b>	<b>Chain</b>	<b>Residues</b>	<b>Atoms</b>		<b>ZeroOcc</b>	<b>AltConf</b>
7	B	156	Total 156	O 156	0	0
7	C	157	Total 157	O 157	0	0
7	D	76	Total 76	O 76	0	0



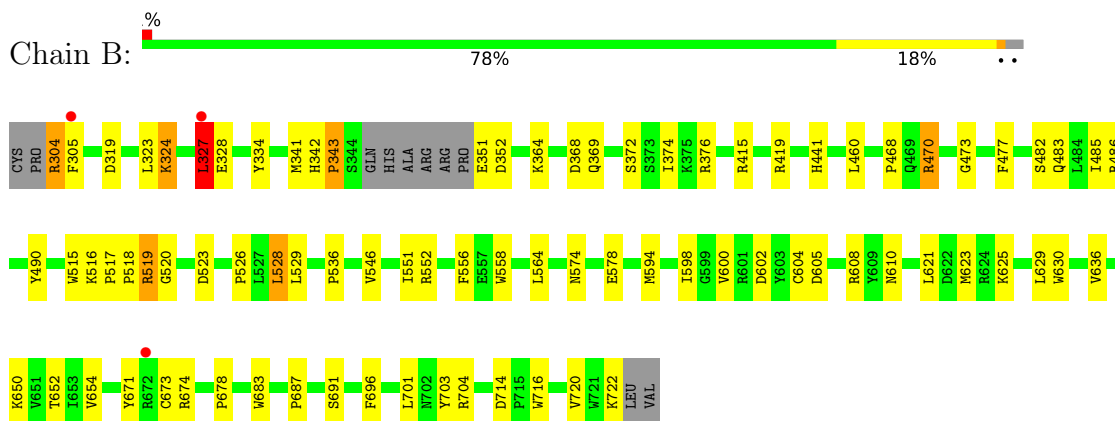
### 3 Residue-property plots

These plots are drawn for all protein, RNA, DNA and oligosaccharide chains in the entry. The first graphic for a chain summarises the proportions of the various outlier classes displayed in the second graphic. The second graphic shows the sequence view annotated by issues in geometry and electron density. Residues are color-coded according to the number of geometric quality criteria for which they contain at least one outlier: green = 0, yellow = 1, orange = 2 and red = 3 or more. A red dot above a residue indicates a poor fit to the electron density ( $RSRZ > 2$ ). Stretches of 2 or more consecutive residues without any outlier are shown as a green connector. Residues present in the sample, but not in the model, are shown in grey.

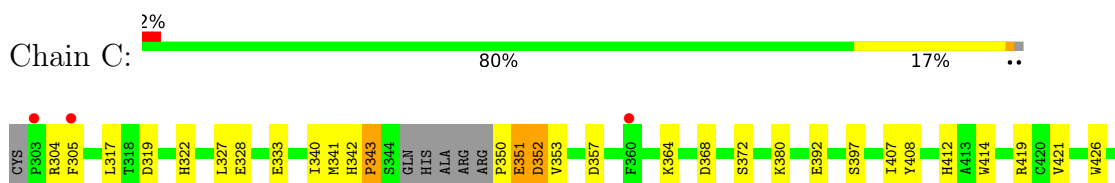
- Molecule 1: Nitric oxide synthase, brain

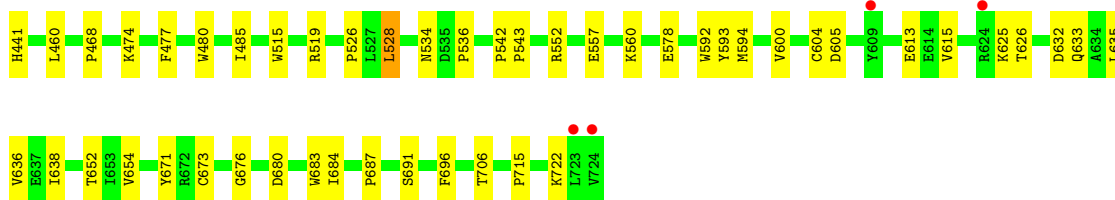


- Molecule 1: Nitric oxide synthase, brain

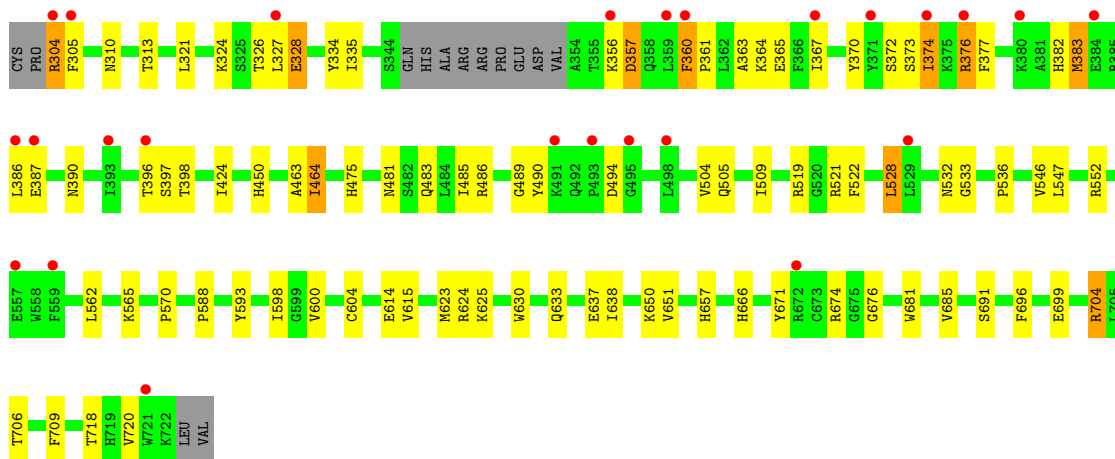
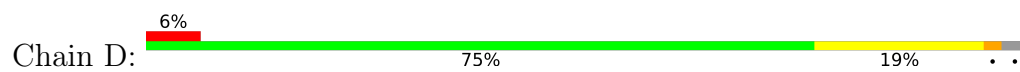


- Molecule 1: Nitric oxide synthase, brain





● Molecule 1: Nitric oxide synthase, brain



## 4 Data and refinement statistics

Property	Value	Source
Space group	P 1 21 1	Depositor
Cell constants a, b, c, $\alpha$ , $\beta$ , $\gamma$	52.17Å 121.41Å 164.65Å 90.00° 90.04° 90.00°	Depositor
Resolution (Å)	39.57 – 2.15 39.57 – 2.15	Depositor EDS
% Data completeness (in resolution range)	96.5 (39.57-2.15) 96.7 (39.57-2.15)	Depositor EDS
$R_{merge}$	0.12	Depositor
$R_{sym}$	(Not available)	Depositor
$\langle I/\sigma(I) \rangle$ <sup>1</sup>	1.32 (at 2.16Å)	Xtrriage
Refinement program	PHENIX 1.11.1_2575	Depositor
R, $R_{free}$	0.198 , 0.261 0.193 , 0.256	Depositor DCC
$R_{free}$ test set	5410 reflections (5.02%)	wwPDB-VP
Wilson B-factor (Å <sup>2</sup> )	45.6	Xtrriage
Anisotropy	1.010	Xtrriage
Bulk solvent $k_{sol}$ (e/Å <sup>3</sup> ), $B_{sol}$ (Å <sup>2</sup> )	0.32 , 39.9	EDS
L-test for twinning <sup>2</sup>	$\langle  L  \rangle = 0.51$ , $\langle L^2 \rangle = 0.34$	Xtrriage
Estimated twinning fraction	0.470 for h,-k,-l	Xtrriage
$F_o, F_c$ correlation	0.97	EDS
Total number of atoms	14342	wwPDB-VP
Average B, all atoms (Å <sup>2</sup> )	67.0	wwPDB-VP

Xtrriage's analysis on translational NCS is as follows: *The largest off-origin peak in the Patterson function is 4.88% of the height of the origin peak. No significant pseudotranslation is detected.*

<sup>1</sup>Intensities estimated from amplitudes.

<sup>2</sup>Theoretical values of  $\langle |L| \rangle$ ,  $\langle L^2 \rangle$  for acentric reflections are 0.5, 0.333 respectively for untwinned datasets, and 0.375, 0.2 for perfectly twinned datasets.

## 5 Model quality [i](#)

### 5.1 Standard geometry [i](#)

Bond lengths and bond angles in the following residue types are not validated in this section: HEM, GOL, ZN, H4B, XVZ

The Z score for a bond length (or angle) is the number of standard deviations the observed value is removed from the expected value. A bond length (or angle) with  $|Z| > 5$  is considered an outlier worth inspection. RMSZ is the root-mean-square of all Z scores of the bond lengths (or angles).

Mol	Chain	Bond lengths		Bond angles	
		RMSZ	# Z  >5	RMSZ	# Z  >5
1	A	0.40	0/3456	0.55	0/4690
1	B	0.45	0/3473	0.57	1/4712 (0.0%)
1	C	0.44	0/3518	0.57	0/4774
1	D	0.40	0/3449	0.55	0/4679
All	All	0.42	0/13896	0.56	1/18855 (0.0%)

Chiral center outliers are detected by calculating the chiral volume of a chiral center and verifying if the center is modelled as a planar moiety or with the opposite hand. A planarity outlier is detected by checking planarity of atoms in a peptide group, atoms in a mainchain group or atoms of a sidechain that are expected to be planar.

Mol	Chain	#Chirality outliers	#Planarity outliers
1	C	0	1

There are no bond length outliers.

All (1) bond angle outliers are listed below:

Mol	Chain	Res	Type	Atoms	Z	Observed( $^{\circ}$ )	Ideal( $^{\circ}$ )
1	B	327	LEU	CA-CB-CG	5.74	128.51	115.30

There are no chirality outliers.

All (1) planarity outliers are listed below:

Mol	Chain	Res	Type	Group
1	C	593	TYR	Peptide

## 5.2 Too-close contacts

In the following table, the Non-H and H(model) columns list the number of non-hydrogen atoms and hydrogen atoms in the chain respectively. The H(added) column lists the number of hydrogen atoms added and optimized by MolProbity. The Clashes column lists the number of clashes within the asymmetric unit, whereas Symm-Clashes lists symmetry-related clashes.

Mol	Chain	Non-H	H(model)	H(added)	Clashes	Symm-Clashes
1	A	3349	0	3269	58	0
1	B	3372	0	3281	51	0
1	C	3409	0	3329	49	0
1	D	3348	0	3262	55	0
2	A	43	0	30	2	0
2	B	43	0	30	2	0
2	C	43	0	30	1	0
2	D	43	0	30	6	0
3	A	17	0	15	0	0
3	B	17	0	15	2	0
3	C	17	0	15	1	0
3	D	17	0	15	0	0
4	A	21	0	0	0	0
4	B	42	0	0	0	0
4	C	42	0	0	2	0
4	D	21	0	0	0	0
5	A	12	0	16	2	0
5	B	6	0	8	0	0
5	C	12	0	16	1	0
5	D	6	0	8	1	0
6	A	1	0	0	0	0
6	D	1	0	0	0	0
7	A	71	0	0	1	0
7	B	156	0	0	3	0
7	C	157	0	0	7	0
7	D	76	0	0	2	0
All	All	14342	0	13369	207	0

The all-atom clashscore is defined as the number of clashes found per 1000 atoms (including hydrogen atoms). The all-atom clashscore for this structure is 8.

All (207) close contacts within the same asymmetric unit are listed below, sorted by their clash magnitude.

Atom-1	Atom-2	Interatomic distance (Å)	Clash overlap (Å)
1:A:528:LEU:HD22	1:A:536:PRO:HB2	1.57	0.85

*Continued on next page...*

*Continued from previous page...*

Atom-1	Atom-2	Interatomic distance (Å)	Clash overlap (Å)
1:B:528:LEU:HD22	1:B:536:PRO:HB2	1.61	0.83
2:D:802:HEM:HBC2	2:D:802:HEM:HH2	1.67	0.76
1:A:691:SER:HB3	1:B:687:PRO:HB2	1.68	0.75
1:C:528:LEU:HD22	1:C:536:PRO:HB2	1.71	0.73
1:D:657:HIS:ND1	7:D:901:HOH:O	2.23	0.70
4:C:803:XVZ:N19	7:C:903:HOH:O	2.26	0.67
2:D:802:HEM:HBB2	2:D:802:HEM:HHC	1.76	0.67
1:C:519:ARG:NH2	7:C:904:HOH:O	2.27	0.66
1:C:605:ASP:OD1	7:C:901:HOH:O	2.14	0.66
2:B:801:HEM:HMC2	2:B:801:HEM:HBC2	1.78	0.66
1:C:392:GLU:OE2	7:C:902:HOH:O	2.14	0.66
1:D:528:LEU:HD22	1:D:536:PRO:HB2	1.78	0.65
1:D:463:ALA:O	1:D:464:ILE:HG22	1.97	0.65
1:B:364:LYS:NZ	1:B:368:ASP:OD2	2.31	0.64
1:C:687:PRO:HB2	1:D:691:SER:HB3	1.82	0.62
1:B:304:ARG:HG2	1:B:305:PHE:HD1	1.65	0.61
1:D:327:LEU:HD22	1:D:704:ARG:HH12	1.63	0.61
1:D:372:SER:HA	1:D:377:PHE:HB2	1.81	0.61
1:A:522:PHE:HB2	1:A:565:LYS:HE2	1.84	0.59
2:A:801:HEM:HMC2	2:A:801:HEM:HBC2	1.85	0.58
1:D:624:ARG:HH12	1:D:625:LYS:HZ1	1.49	0.58
1:A:385:ARG:NE	1:A:405:GLU:OE1	2.36	0.57
1:C:407:ILE:HG21	5:C:806:GOL:H31	1.88	0.56
1:D:357:ASP:O	1:D:361:PRO:HD2	2.05	0.56
1:A:480:TRP:CE2	1:A:715:PRO:HB2	2.40	0.56
1:C:557:GLU:O	1:C:560:LYS:NZ	2.35	0.55
1:C:534:ASN:HA	1:C:722:LYS:HE3	1.89	0.55
1:D:483:GLN:OE1	1:D:486:ARG:HD2	2.07	0.54
1:D:304:ARG:NH2	1:D:305:PHE:O	2.40	0.54
1:A:326:THR:HA	1:B:334:TYR:HE1	1.73	0.54
1:A:398:THR:OG1	1:A:399:TYR:N	2.35	0.54
1:A:429:LEU:O	5:A:805:GOL:H2	2.07	0.54
1:A:485:ILE:HD13	1:A:546:VAL:HG13	1.90	0.54
1:A:494:ASP:O	1:A:496:SER:N	2.37	0.53
1:A:519:ARG:HD3	7:A:910:HOH:O	2.09	0.53
1:D:709:PHE:CE1	2:D:802:HEM:HBC1	2.44	0.53
1:A:460:LEU:HD12	1:A:652:THR:HB	1.92	0.52
1:B:327:LEU:HD13	1:B:328:GLU:H	1.75	0.52
1:A:470:ARG:HG3	1:A:476:ASP:OD1	2.08	0.52
1:D:505:GLN:O	1:D:509:ILE:HG13	2.09	0.52
2:D:802:HEM:HBC2	2:D:802:HEM:CHD	2.37	0.52

*Continued on next page...*

*Continued from previous page...*

Atom-1	Atom-2	Interatomic distance (Å)	Clash overlap (Å)
1:A:326:THR:HA	1:B:334:TYR:CE1	2.45	0.51
1:D:387:GLU:O	1:D:390:ASN:HB2	2.10	0.51
1:D:363:ALA:O	1:D:367:ILE:HG12	2.11	0.50
1:D:532:ASN:ND2	7:D:903:HOH:O	2.38	0.50
1:A:383:MET:HA	1:A:386:LEU:HB2	1.93	0.50
1:A:381:ALA:O	1:A:384:GLU:N	2.42	0.50
1:C:351:GLU:C	1:C:353:VAL:H	2.14	0.50
1:B:470:ARG:HD2	1:B:473:GLY:HA2	1.93	0.50
1:D:424:ILE:HA	1:D:666:HIS:ND1	2.25	0.50
1:C:351:GLU:OE1	1:C:474:LYS:HE3	2.12	0.50
1:D:327:LEU:HD22	1:D:704:ARG:NH1	2.25	0.50
1:A:475:HIS:HA	1:A:533:GLY:HA3	1.93	0.50
1:C:600:VAL:HG13	1:C:635:LEU:HD11	1.94	0.50
1:B:678:PRO:HG3	1:B:703:TYR:CE1	2.48	0.49
1:C:691:SER:HA	1:C:696:PHE:CG	2.47	0.49
1:C:319:ASP:HB2	1:C:671:TYR:HE2	1.77	0.49
2:C:801:HEM:HHC	2:C:801:HEM:HBB2	1.93	0.49
1:A:402:LYS:N	1:A:405:GLU:OE2	2.42	0.49
1:C:515:TRP:CD1	1:C:526:PRO:HG3	2.48	0.49
1:A:491:LYS:HE2	1:A:504:VAL:HG11	1.95	0.49
1:D:674:ARG:HH21	5:D:805:GOL:H11	1.78	0.49
1:A:490:TYR:CE1	1:A:519:ARG:HA	2.48	0.49
1:A:615:VAL:HG21	1:A:638:ILE:HD11	1.94	0.49
1:A:374:ILE:O	1:A:376:ARG:HG2	2.12	0.48
1:A:324:LYS:HD3	5:A:804:GOL:H11	1.94	0.48
1:B:460:LEU:HG	1:B:652:THR:HB	1.95	0.48
1:A:363:ALA:O	1:A:367:ILE:HG12	2.13	0.48
1:B:341:MET:CE	3:B:802:H4B:H9	2.44	0.48
1:B:483:GLN:OE1	1:B:486:ARG:HD2	2.13	0.48
1:C:460:LEU:HD12	1:C:592:TRP:HB3	1.94	0.48
1:C:604:CYS:SG	1:C:635:LEU:HD12	2.54	0.48
1:B:327:LEU:HB3	1:B:704:ARG:HD3	1.95	0.48
1:D:522:PHE:HB2	1:D:565:LYS:HE3	1.94	0.48
1:B:623:MET:HA	1:B:630:TRP:CD1	2.49	0.48
1:B:441:HIS:ND1	7:B:903:HOH:O	2.35	0.48
1:A:557:GLU:O	1:A:560:LYS:HG2	2.14	0.48
1:D:386:LEU:C	1:D:390:ASN:HD22	2.17	0.48
1:D:450:HIS:CE1	1:D:464:ILE:H	2.32	0.48
1:A:600:VAL:O	1:A:604:CYS:HB2	2.14	0.48
1:A:380:LYS:H	1:A:380:LYS:HG3	1.39	0.47
1:C:408:TYR:CE1	1:C:412:HIS:CE1	3.01	0.47

*Continued on next page...*

*Continued from previous page...*

Atom-1	Atom-2	Interatomic distance (Å)	Clash overlap (Å)
1:D:681:TRP:CZ2	1:D:685:VAL:HG21	2.49	0.47
1:A:691:SER:HA	1:A:696:PHE:CG	2.49	0.47
1:C:626:THR:HG22	7:C:1009:HOH:O	2.15	0.47
1:C:414:TRP:CE3	1:C:426:TRP:HA	2.50	0.47
1:A:355:THR:OG1	1:A:358:GLN:HG3	2.15	0.47
1:B:341:MET:HE3	1:B:341:MET:HB2	1.82	0.47
1:B:515:TRP:CG	1:B:526:PRO:HG3	2.50	0.47
1:B:485:ILE:HD13	1:B:546:VAL:HG13	1.97	0.47
1:C:636:VAL:HG11	1:D:633:GLN:HG2	1.97	0.47
1:B:610:ASN:O	7:B:901:HOH:O	2.20	0.46
1:B:342:HIS:CG	1:B:343:PRO:HD2	2.50	0.46
1:B:468:PRO:HG2	1:B:477:PHE:CZ	2.50	0.46
1:A:380:LYS:HD2	1:A:381:ALA:H	1.80	0.46
2:A:801:HEM:HBB2	2:A:801:HEM:HHC	1.98	0.46
1:A:535:ASP:OD2	1:A:722:LYS:HG2	2.16	0.46
1:A:640:ILE:HG13	1:B:629:LEU:HD12	1.97	0.46
1:C:364:LYS:NZ	1:C:368:ASP:OD2	2.47	0.46
1:B:551:ILE:HB	1:B:564:LEU:HB2	1.98	0.46
1:D:521:ARG:HG2	1:D:522:PHE:CE1	2.51	0.46
1:B:691:SER:HA	1:B:696:PHE:CG	2.51	0.45
1:C:671:TYR:HA	1:C:676:GLY:H	1.81	0.45
1:D:374:ILE:O	1:D:376:ARG:HG2	2.17	0.45
1:C:342:HIS:ND1	1:C:343:PRO:HD2	2.31	0.45
1:C:480:TRP:HB2	1:C:528:LEU:HB3	1.97	0.45
1:D:464:ILE:HA	1:D:588:PRO:O	2.15	0.45
1:D:600:VAL:O	1:D:604:CYS:HB2	2.17	0.45
1:B:594:MET:HA	1:B:654:VAL:O	2.16	0.45
1:C:341:MET:CE	3:C:802:H4B:H9	2.47	0.45
1:C:341:MET:HE3	1:C:341:MET:HB2	1.92	0.45
1:D:691:SER:HA	1:D:696:PHE:CG	2.51	0.45
1:A:335:ILE:HD11	1:B:701:LEU:HD22	1.98	0.45
1:B:520:GLY:N	1:B:523:ASP:OD2	2.43	0.45
1:C:613:GLU:HB2	7:C:933:HOH:O	2.15	0.45
1:C:633:GLN:NE2	1:D:637:GLU:OE2	2.50	0.45
1:C:468:PRO:HG2	1:C:477:PHE:CZ	2.52	0.45
1:D:383:MET:HA	1:D:386:LEU:HB2	1.99	0.45
1:D:615:VAL:HG21	1:D:638:ILE:HD11	1.98	0.45
1:A:419:ARG:HD3	1:A:683:TRP:CD2	2.52	0.45
1:B:556:PHE:HB3	1:B:558:TRP:CE2	2.51	0.45
1:C:515:TRP:CG	1:C:526:PRO:HG3	2.52	0.45
1:C:594:MET:HA	1:C:654:VAL:O	2.17	0.45

*Continued on next page...*



*Continued from previous page...*

Atom-1	Atom-2	Interatomic distance (Å)	Clash overlap (Å)
1:B:341:MET:HE1	3:B:802:H4B:H9	1.98	0.44
1:A:354:ALA:HB1	1:A:358:GLN:HB2	1.99	0.44
1:B:516:LYS:NZ	7:B:905:HOH:O	2.38	0.44
1:C:542:PRO:HA	1:C:543:PRO:HD3	1.93	0.44
1:D:709:PHE:CZ	2:D:802:HEM:HBC1	2.52	0.44
1:B:319:ASP:HB2	1:B:671:TYR:HE2	1.82	0.44
1:D:593:TYR:CD1	1:D:598:ILE:HD11	2.52	0.44
1:C:304:ARG:HG3	1:C:305:PHE:CD1	2.53	0.44
1:D:475:HIS:HA	1:D:533:GLY:HA3	2.00	0.44
1:C:350:PRO:C	1:C:352:ASP:H	2.21	0.44
1:A:491:LYS:CE	1:A:504:VAL:HG11	2.48	0.44
1:C:480:TRP:CE2	1:C:715:PRO:HB2	2.53	0.44
1:C:687:PRO:CB	1:D:691:SER:HB3	2.45	0.44
1:C:441:HIS:ND1	7:C:907:HOH:O	2.36	0.44
1:D:681:TRP:CE2	1:D:685:VAL:HG21	2.53	0.44
1:A:507:THR:O	1:A:511:ILE:HG13	2.17	0.43
1:B:415:ARG:CZ	1:B:674:ARG:HD2	2.47	0.43
1:B:323:LEU:HB2	1:B:324:LYS:NZ	2.32	0.43
1:C:421:VAL:HG23	1:C:684:ILE:HG23	2.01	0.43
1:C:340:ILE:HD13	1:D:699:GLU:HB3	2.00	0.43
1:D:370:TYR:O	1:D:373:SER:OG	2.23	0.43
1:D:396:THR:O	1:D:398:THR:N	2.48	0.43
1:A:310:ASN:O	1:A:314:GLU:N	2.46	0.43
1:A:374:ILE:C	1:A:376:ARG:H	2.21	0.43
1:A:304:ARG:HH21	1:D:356:LYS:NZ	2.16	0.43
1:C:615:VAL:HG21	1:C:638:ILE:HD11	2.01	0.43
2:B:801:HEM:HBB2	2:B:801:HEM:HHC	2.00	0.43
1:D:490:TYR:CE1	1:D:519:ARG:HA	2.54	0.43
1:A:530:GLN:HG3	1:A:534:ASN:O	2.18	0.43
1:A:553:HIS:HB2	1:A:559:PHE:CG	2.53	0.43
1:A:327:LEU:HD23	1:A:328:GLU:O	2.19	0.43
1:B:621:LEU:HD23	1:B:621:LEU:HA	1.84	0.42
1:C:322:HIS:HB2	1:D:335:ILE:CD1	2.49	0.42
1:C:460:LEU:HD12	1:C:592:TRP:CB	2.49	0.42
1:A:322:HIS:C	1:A:324:LYS:H	2.21	0.42
1:C:632:ASP:O	1:C:636:VAL:HG23	2.20	0.42
1:C:671:TYR:HA	1:C:676:GLY:N	2.34	0.42
1:B:482:SER:HA	1:B:574:ASN:HB3	2.01	0.42
1:A:335:ILE:CD1	1:B:701:LEU:HD22	2.49	0.42
1:A:633:GLN:HG3	1:B:636:VAL:HG11	2.02	0.42
1:B:490:TYR:CZ	1:B:519:ARG:HA	2.55	0.42

*Continued on next page...*

*Continued from previous page...*

Atom-1	Atom-2	Interatomic distance (Å)	Clash overlap (Å)
1:B:529:LEU:O	1:B:536:PRO:HA	2.20	0.42
1:A:408:TYR:CE1	1:A:412:HIS:CE1	3.07	0.42
1:B:304:ARG:NH2	1:B:305:PHE:HB2	2.34	0.42
1:B:374:ILE:O	1:B:376:ARG:HG2	2.20	0.42
1:B:714:ASP:HB3	1:B:716:TRP:CE2	2.55	0.42
1:D:334:TYR:O	1:D:335:ILE:HD13	2.20	0.42
1:A:311:TRP:NE1	1:B:341:MET:HE3	2.35	0.42
1:D:570:PRO:HB3	1:D:593:TYR:CZ	2.55	0.42
1:A:689:SER:HB3	1:A:692:ILE:HG12	2.02	0.41
1:C:343:PRO:HG3	4:C:804:XVZ:F16	2.10	0.41
1:C:680:ASP:O	1:C:684:ILE:HG12	2.19	0.41
1:D:310:ASN:OD1	1:D:313:THR:HG23	2.20	0.41
1:D:489:GLY:O	1:D:504:VAL:HA	2.20	0.41
1:D:321:LEU:HD13	1:D:674:ARG:HG2	2.02	0.41
1:D:562:LEU:HD23	1:D:562:LEU:HA	1.90	0.41
1:D:623:MET:HA	1:D:630:TRP:CD1	2.55	0.41
1:B:605:ASP:HB2	1:B:608:ARG:CG	2.51	0.41
1:D:360:PHE:HZ	1:D:390:ASN:ND2	2.18	0.41
1:B:304:ARG:HH11	1:B:304:ARG:HB3	1.84	0.41
1:A:393:ILE:HG23	1:A:397:SER:O	2.21	0.41
1:A:421:VAL:HG23	1:A:684:ILE:HG23	2.02	0.41
1:D:485:ILE:HD12	1:D:546:VAL:HG13	2.03	0.41
1:A:371:TYR:CE1	1:A:382:HIS:HA	2.56	0.41
1:A:617:LYS:HE3	1:A:617:LYS:HB3	1.79	0.41
1:B:419:ARG:HD3	1:B:683:TRP:CD2	2.56	0.41
1:B:517:PRO:HA	1:B:518:PRO:HD2	1.99	0.41
1:C:419:ARG:HD3	1:C:683:TRP:CD2	2.56	0.41
1:D:671:TYR:CE2	1:D:676:GLY:HA2	2.56	0.41
1:A:615:VAL:O	1:A:619:MET:HG3	2.20	0.41
1:B:600:VAL:O	1:B:604:CYS:HB2	2.22	0.41
1:C:317:LEU:HD23	1:C:317:LEU:HA	1.89	0.41
1:A:379:SER:O	1:A:382:HIS:HB3	2.21	0.40
1:B:598:ILE:HA	1:B:602:ASP:OD2	2.20	0.40
1:A:455:THR:O	1:A:460:LEU:HD23	2.22	0.40
1:A:554:PRO:HD3	1:A:644:TYR:CD2	2.56	0.40
1:B:515:TRP:CE2	1:B:526:PRO:HD3	2.57	0.40
1:C:460:LEU:HG	1:C:652:THR:HB	2.02	0.40
1:D:327:LEU:HD23	1:D:328:GLU:O	2.22	0.40
1:A:380:LYS:HD2	1:A:381:ALA:N	2.37	0.40
1:B:598:ILE:HA	1:B:602:ASP:HB2	2.03	0.40
1:D:547:LEU:HD21	1:D:651:VAL:HG22	2.04	0.40

*Continued on next page...*

Continued from previous page...

Atom-1	Atom-2	Interatomic distance (Å)	Clash overlap (Å)
1:D:709:PHE:CE1	2:D:802:HEM:CBC	3.04	0.40

There are no symmetry-related clashes.

## 5.3 Torsion angles [i](#)

### 5.3.1 Protein backbone [i](#)

In the following table, the Percentiles column shows the percent Ramachandran outliers of the chain as a percentile score with respect to all X-ray entries followed by that with respect to entries of similar resolution.

The Analysed column shows the number of residues for which the backbone conformation was analysed, and the total number of residues.

Mol	Chain	Analysed	Favoured	Allowed	Outliers	Percentiles	
1	A	409/423 (97%)	383 (94%)	23 (6%)	3 (1%)	22	15
1	B	411/423 (97%)	390 (95%)	19 (5%)	2 (0%)	29	22
1	C	417/423 (99%)	400 (96%)	13 (3%)	4 (1%)	15	9
1	D	408/423 (96%)	385 (94%)	21 (5%)	2 (0%)	29	22
All	All	1645/1692 (97%)	1558 (95%)	76 (5%)	11 (1%)	22	15

All (11) Ramachandran outliers are listed below:

Mol	Chain	Res	Type
1	A	382	HIS
1	B	343	PRO
1	A	381	ALA
1	A	495	GLY
1	C	343	PRO
1	D	464	ILE
1	B	352	ASP
1	C	328	GLU
1	C	352	ASP
1	D	382	HIS
1	C	351	GLU

### 5.3.2 Protein sidechains [i](#)

In the following table, the Percentiles column shows the percent sidechain outliers of the chain as a percentile score with respect to all X-ray entries followed by that with respect to entries of similar resolution.

The Analysed column shows the number of residues for which the sidechain conformation was analysed, and the total number of residues.

Mol	Chain	Analysed	Rotameric	Outliers	Percentiles	
1	A	369/378 (98%)	349 (95%)	20 (5%)	22	18
1	B	371/378 (98%)	355 (96%)	16 (4%)	29	27
1	C	377/378 (100%)	362 (96%)	15 (4%)	31	29
1	D	368/378 (97%)	346 (94%)	22 (6%)	19	14
All	All	1485/1512 (98%)	1412 (95%)	73 (5%)	25	21

All (73) residues with a non-rotameric sidechain are listed below:

Mol	Chain	Res	Type
1	A	325	SER
1	A	327	LEU
1	A	335	ILE
1	A	341	MET
1	A	342	HIS
1	A	365	GLU
1	A	380	LYS
1	A	383	MET
1	A	390	ASN
1	A	398	THR
1	A	481	ASN
1	A	491	LYS
1	A	528	LEU
1	A	552	ARG
1	A	614	GLU
1	A	618	LYS
1	A	650	LYS
1	A	704	ARG
1	A	706[A]	THR
1	A	706[B]	THR
1	B	304	ARG
1	B	324	LYS
1	B	327	LEU
1	B	351	GLU

*Continued on next page...*

*Continued from previous page...*

<b>Mol</b>	<b>Chain</b>	<b>Res</b>	<b>Type</b>
1	B	369	GLN
1	B	372	SER
1	B	470	ARG
1	B	519	ARG
1	B	528	LEU
1	B	552	ARG
1	B	578	GLU
1	B	625	LYS
1	B	650	LYS
1	B	673	CYS
1	B	720	VAL
1	B	722	LYS
1	C	327	LEU
1	C	333	GLU
1	C	357	ASP
1	C	372	SER
1	C	380	LYS
1	C	397	SER
1	C	485	ILE
1	C	528	LEU
1	C	552	ARG
1	C	578	GLU
1	C	625	LYS
1	C	673[A]	CYS
1	C	673[B]	CYS
1	C	706[A]	THR
1	C	706[B]	THR
1	D	304	ARG
1	D	324	LYS
1	D	326	THR
1	D	328	GLU
1	D	357	ASP
1	D	360	PHE
1	D	364	LYS
1	D	365	GLU
1	D	374	ILE
1	D	376	ARG
1	D	383	MET
1	D	397	SER
1	D	481	ASN
1	D	494	ASP
1	D	528	LEU

*Continued on next page...*

*Continued from previous page...*

Mol	Chain	Res	Type
1	D	552	ARG
1	D	614	GLU
1	D	650	LYS
1	D	704	ARG
1	D	706	THR
1	D	718	THR
1	D	720	VAL

Sometimes sidechains can be flipped to improve hydrogen bonding and reduce clashes. All (1) such sidechains are listed below:

Mol	Chain	Res	Type
1	A	412	HIS

### 5.3.3 RNA [i](#)

There are no RNA molecules in this entry.

## 5.4 Non-standard residues in protein, DNA, RNA chains [i](#)

There are no non-standard protein/DNA/RNA residues in this entry.

## 5.5 Carbohydrates [i](#)

There are no monosaccharides in this entry.

## 5.6 Ligand geometry [i](#)

Of 22 ligands modelled in this entry, 2 are monoatomic - leaving 20 for Mogul analysis.

In the following table, the Counts columns list the number of bonds (or angles) for which Mogul statistics could be retrieved, the number of bonds (or angles) that are observed in the model and the number of bonds (or angles) that are defined in the Chemical Component Dictionary. The Link column lists molecule types, if any, to which the group is linked. The Z score for a bond length (or angle) is the number of standard deviations the observed value is removed from the expected value. A bond length (or angle) with  $|Z| > 2$  is considered an outlier worth inspection. RMSZ is the root-mean-square of all Z scores of the bond lengths (or angles).

Mol	Type	Chain	Res	Link	Bond lengths			Bond angles		
					Counts	RMSZ	$\# Z  > 2$	Counts	RMSZ	$\# Z  > 2$
5	GOL	A	805	-	5,5,5	0.35	0	5,5,5	0.45	0

Mol	Type	Chain	Res	Link	Bond lengths			Bond angles		
					Counts	RMSZ	# Z  > 2	Counts	RMSZ	# Z  > 2
4	XVZ	B	804	-	21,22,22	0.39	0	28,30,30	1.62	6 (21%)
4	XVZ	A	803	-	21,22,22	0.53	0	28,30,30	2.51	10 (35%)
2	HEM	A	801	1	41,50,50	1.43	4 (9%)	45,82,82	1.67	6 (13%)
5	GOL	B	805	-	5,5,5	0.35	0	5,5,5	0.24	0
5	GOL	A	804	-	5,5,5	0.32	0	5,5,5	0.42	0
3	H4B	B	802	-	16,18,18	0.62	0	11,26,26	2.68	7 (63%)
4	XVZ	C	803	-	21,22,22	0.39	0	28,30,30	2.47	9 (32%)
4	XVZ	C	804	-	21,22,22	0.49	0	28,30,30	1.55	5 (17%)
4	XVZ	B	803	-	21,22,22	0.42	0	28,30,30	2.61	9 (32%)
5	GOL	C	805	-	5,5,5	0.36	0	5,5,5	0.47	0
3	H4B	A	802	-	16,18,18	0.97	1 (6%)	11,26,26	2.54	6 (54%)
3	H4B	D	803	-	16,18,18	1.02	1 (6%)	11,26,26	2.59	5 (45%)
3	H4B	C	802	-	16,18,18	0.72	0	11,26,26	2.62	6 (54%)
2	HEM	C	801	1	41,50,50	1.48	5 (12%)	45,82,82	1.60	6 (13%)
2	HEM	D	802	1	41,50,50	1.46	4 (9%)	45,82,82	1.71	8 (17%)
4	XVZ	D	804	-	21,22,22	0.42	0	28,30,30	2.27	9 (32%)
2	HEM	B	801	1	41,50,50	1.52	5 (12%)	45,82,82	1.57	4 (8%)
5	GOL	D	805	-	5,5,5	0.32	0	5,5,5	0.40	0
5	GOL	C	806	-	5,5,5	0.21	0	5,5,5	0.74	0

In the following table, the Chirals column lists the number of chiral outliers, the number of chiral centers analysed, the number of these observed in the model and the number defined in the Chemical Component Dictionary. Similar counts are reported in the Torsion and Rings columns. '-' means no outliers of that kind were identified.

Mol	Type	Chain	Res	Link	Chirals	Torsions	Rings
5	GOL	A	805	-	-	2/4/4/4	-
4	XVZ	B	804	-	-	0/8/8/8	0/2/2/2
4	XVZ	A	803	-	-	3/8/8/8	0/2/2/2
2	HEM	A	801	1	-	0/12/54/54	-
5	GOL	B	805	-	-	2/4/4/4	-
5	GOL	A	804	-	-	2/4/4/4	-
3	H4B	B	802	-	-	0/8/17/17	0/2/2/2
4	XVZ	C	803	-	-	4/8/8/8	0/2/2/2
4	XVZ	C	804	-	-	1/8/8/8	0/2/2/2
4	XVZ	B	803	-	-	2/8/8/8	0/2/2/2
5	GOL	C	805	-	-	4/4/4/4	-
3	H4B	A	802	-	-	2/8/17/17	0/2/2/2

Continued on next page...

Continued from previous page...

Mol	Type	Chain	Res	Link	Chirals	Torsions	Rings
3	H4B	D	803	-	-	0/8/17/17	0/2/2/2
3	H4B	C	802	-	-	2/8/17/17	0/2/2/2
2	HEM	C	801	1	-	0/12/54/54	-
2	HEM	D	802	1	-	1/12/54/54	-
4	XVZ	D	804	-	-	3/8/8/8	0/2/2/2
2	HEM	B	801	1	-	0/12/54/54	-
5	GOL	D	805	-	-	1/4/4/4	-
5	GOL	C	806	-	-	2/4/4/4	-

All (20) bond length outliers are listed below:

Mol	Chain	Res	Type	Atoms	Z	Observed(Å)	Ideal(Å)
2	D	802	HEM	C3C-C2C	-4.54	1.34	1.40
2	B	801	HEM	C3C-C2C	-3.62	1.35	1.40
2	C	801	HEM	C3C-C2C	-3.59	1.35	1.40
2	B	801	HEM	C3C-CAC	3.42	1.54	1.47
2	A	801	HEM	CAB-C3B	3.29	1.56	1.47
2	C	801	HEM	C3C-CAC	3.26	1.54	1.47
2	A	801	HEM	C3C-C2C	-3.25	1.35	1.40
2	C	801	HEM	CAB-C3B	3.14	1.56	1.47
2	A	801	HEM	C3C-CAC	3.13	1.54	1.47
2	B	801	HEM	CAB-C3B	3.05	1.55	1.47
2	D	802	HEM	CAB-C3B	2.97	1.55	1.47
2	D	802	HEM	C3C-CAC	2.72	1.53	1.47
3	D	803	H4B	C4A-C4	-2.58	1.38	1.41
2	B	801	HEM	FE-ND	2.57	2.09	1.96
2	C	801	HEM	CMD-C2D	2.22	1.55	1.50
2	C	801	HEM	C3B-C2B	-2.20	1.32	1.37
2	B	801	HEM	CMD-C2D	2.18	1.55	1.50
3	A	802	H4B	C4A-C4	-2.15	1.38	1.41
2	A	801	HEM	CMB-C2B	2.10	1.55	1.50
2	D	802	HEM	CMD-C2D	2.06	1.55	1.50

All (96) bond angle outliers are listed below:

Mol	Chain	Res	Type	Atoms	Z	Observed(°)	Ideal(°)
4	B	803	XVZ	C09-C11-C16	-6.72	115.33	120.73
4	D	804	XVZ	C09-C08-C06	-6.29	98.89	112.99
4	B	803	XVZ	C09-C08-C06	-6.25	98.99	112.99
2	D	802	HEM	CBA-CAA-C2A	-6.14	102.14	112.62
4	C	803	XVZ	C09-C11-C16	-6.14	115.80	120.73

Continued on next page...



*Continued from previous page...*

Mol	Chain	Res	Type	Atoms	Z	Observed(°)	Ideal(°)
4	C	803	XVZ	C09-C08-C06	-5.86	99.85	112.99
4	A	803	XVZ	C02-N01-C06	5.83	122.52	118.10
2	B	801	HEM	CBA-CAA-C2A	-5.79	102.74	112.62
4	A	803	XVZ	C09-C11-C16	-5.77	116.10	120.73
4	B	803	XVZ	C02-N01-C06	5.61	122.35	118.10
2	C	801	HEM	CBA-CAA-C2A	-5.37	103.45	112.62
2	A	801	HEM	CBA-CAA-C2A	-5.22	103.72	112.62
4	C	803	XVZ	C02-N01-C06	5.15	122.00	118.10
3	D	803	H4B	C8A-C4A-C4	5.03	119.04	114.57
3	A	802	H4B	C8A-C4A-C4	5.00	119.01	114.57
2	A	801	HEM	C4B-CHC-C1C	4.95	129.09	122.56
4	A	803	XVZ	C09-C08-C06	-4.93	101.93	112.99
2	C	801	HEM	C4B-CHC-C1C	4.75	128.83	122.56
4	B	804	XVZ	C02-N01-C06	4.74	121.69	118.10
4	D	804	XVZ	C02-N01-C06	4.48	121.50	118.10
2	D	802	HEM	C4B-CHC-C1C	4.44	128.42	122.56
3	B	802	H4B	C8A-C4A-C4	4.41	118.49	114.57
4	D	804	XVZ	C09-C11-C16	-4.34	117.24	120.73
4	A	803	XVZ	C08-C09-C11	4.28	119.74	112.81
3	C	802	H4B	C4-C4A-N5	4.17	122.62	119.12
3	B	802	H4B	C4-C4A-N5	4.13	122.58	119.12
4	A	803	XVZ	C05-C06-N01	-4.02	118.64	122.90
3	C	802	H4B	C8A-C4A-C4	3.85	117.99	114.57
4	C	804	XVZ	C02-N01-C06	3.83	121.00	118.10
2	B	801	HEM	C4B-CHC-C1C	3.82	127.59	122.56
3	C	802	H4B	C2-N3-C4	3.78	121.93	115.93
3	D	803	H4B	N2-C2-N1	3.76	123.11	117.25
4	D	804	XVZ	C12-C11-C16	3.73	120.18	116.76
3	B	802	H4B	C2-N3-C4	3.62	121.67	115.93
3	D	803	H4B	C2-N3-C4	3.59	121.63	115.93
4	B	803	XVZ	C08-C09-C11	3.58	118.60	112.81
4	B	803	XVZ	C12-C11-C16	3.57	120.03	116.76
3	C	802	H4B	N1-C2-N3	-3.46	120.00	125.42
3	A	802	H4B	C2-N3-C4	3.44	121.40	115.93
4	B	804	XVZ	C12-C11-C16	3.44	119.91	116.76
4	A	803	XVZ	C08-C06-N01	3.35	120.94	115.95
3	A	802	H4B	N1-C2-N3	-3.33	120.20	125.42
3	D	803	H4B	N1-C2-N3	-3.32	120.22	125.42
4	C	803	XVZ	C12-C11-C16	3.31	119.79	116.76
4	C	803	XVZ	C05-C06-N01	-3.31	119.39	122.90
4	C	804	XVZ	C08-C06-N01	3.28	120.84	115.95
4	C	803	XVZ	C08-C06-N01	3.25	120.79	115.95

*Continued on next page...*

*Continued from previous page...*

Mol	Chain	Res	Type	Atoms	Z	Observed(°)	Ideal(°)
4	B	803	XVZ	C05-C06-N01	-3.12	119.59	122.90
2	B	801	HEM	C3B-C2B-C1B	3.06	108.76	106.49
2	C	801	HEM	C3B-C2B-C1B	3.05	108.75	106.49
2	A	801	HEM	CMC-C2C-C3C	2.97	130.24	124.68
4	C	803	XVZ	C08-C09-C11	2.95	117.58	112.81
3	B	802	H4B	N1-C2-N3	-2.93	120.82	125.42
4	B	804	XVZ	C05-C06-N01	-2.90	119.83	122.90
4	D	804	XVZ	C08-C06-N01	2.90	120.26	115.95
4	D	804	XVZ	C05-C06-N01	-2.86	119.87	122.90
4	A	803	XVZ	N02-C02-N01	2.77	120.87	116.49
4	A	803	XVZ	C09-C11-C12	2.74	124.93	119.41
2	B	801	HEM	C1B-NB-C4B	2.71	107.88	105.07
4	C	804	XVZ	C05-C06-N01	-2.65	120.09	122.90
2	C	801	HEM	CHD-C1D-ND	2.64	127.30	124.43
2	A	801	HEM	C3B-C2B-C1B	2.61	108.42	106.49
4	B	803	XVZ	C09-C11-C12	2.60	124.64	119.41
3	A	802	H4B	C2-N1-C8A	2.56	120.28	114.54
2	C	801	HEM	CMC-C2C-C3C	2.56	129.47	124.68
4	D	804	XVZ	N02-C02-N01	2.56	120.53	116.49
4	B	803	XVZ	N02-C02-N01	2.49	120.43	116.49
4	C	804	XVZ	C12-C11-C16	2.48	119.03	116.76
4	C	803	XVZ	C09-C11-C12	2.48	124.40	119.41
2	D	802	HEM	C3B-C2B-C1B	2.47	108.32	106.49
4	C	803	XVZ	N02-C02-N01	2.44	120.35	116.49
4	A	803	XVZ	C12-C11-C16	2.42	118.97	116.76
4	B	803	XVZ	C08-C06-N01	2.41	119.55	115.95
3	C	802	H4B	C2-N1-C8A	2.40	119.91	114.54
4	C	804	XVZ	C09-C11-C16	2.40	122.66	120.73
2	A	801	HEM	C4D-ND-C1D	2.37	107.52	105.07
3	A	802	H4B	N2-C2-N1	2.36	120.92	117.25
2	A	801	HEM	C3D-C4D-ND	-2.31	107.60	110.17
3	B	802	H4B	C2-N1-C8A	2.27	119.62	114.54
3	D	803	H4B	C2-N1-C8A	2.23	119.55	114.54
2	D	802	HEM	C3C-C4C-NC	-2.23	106.74	110.94
4	D	804	XVZ	C08-C09-C11	2.21	116.38	112.81
4	B	804	XVZ	C09-C11-C16	-2.20	118.96	120.73
2	D	802	HEM	CAD-C3D-C2D	-2.19	123.80	127.88
2	D	802	HEM	CHC-C4B-C3B	2.16	127.88	124.57
4	D	804	XVZ	C18-C17-C13	-2.16	107.89	112.85
2	D	802	HEM	C3D-C4D-ND	-2.12	107.80	110.17
2	C	801	HEM	CMA-C3A-C4A	-2.12	125.20	128.46
4	B	804	XVZ	C18-C17-C13	-2.11	108.00	112.85

*Continued on next page...*

*Continued from previous page...*

Mol	Chain	Res	Type	Atoms	Z	Observed(°)	Ideal(°)
3	B	802	H4B	O10-C10-C11	-2.11	103.49	109.74
3	B	802	H4B	N2-C2-N1	2.10	120.52	117.25
3	C	802	H4B	N2-C2-N1	2.09	120.50	117.25
4	A	803	XVZ	F16-C16-C11	2.08	120.05	117.85
2	D	802	HEM	C4D-ND-C1D	2.07	107.21	105.07
3	A	802	H4B	C4-C4A-N5	2.05	120.84	119.12
4	B	804	XVZ	N02-C02-N01	2.04	119.71	116.49

There are no chirality outliers.

All (31) torsion outliers are listed below:

Mol	Chain	Res	Type	Atoms
4	B	803	XVZ	C08-C09-C11-C16
4	D	804	XVZ	C08-C09-C11-C16
5	A	804	GOL	O1-C1-C2-C3
5	C	806	GOL	O1-C1-C2-C3
5	A	805	GOL	O1-C1-C2-C3
5	B	805	GOL	O1-C1-C2-C3
5	C	805	GOL	O1-C1-C2-C3
4	D	804	XVZ	C13-C17-C18-N19
5	A	804	GOL	O1-C1-C2-O2
5	A	805	GOL	O1-C1-C2-O2
5	C	806	GOL	O1-C1-C2-O2
5	B	805	GOL	O1-C1-C2-O2
2	D	802	HEM	C4B-C3B-CAB-CBB
5	C	805	GOL	O1-C1-C2-O2
5	C	805	GOL	O2-C2-C3-O3
4	A	803	XVZ	C08-C09-C11-C16
4	C	803	XVZ	C08-C09-C11-C16
4	D	804	XVZ	C08-C09-C11-C12
3	C	802	H4B	O10-C10-C9-O9
4	C	804	XVZ	C06-C08-C09-C11
4	A	803	XVZ	C12-C13-C17-C18
4	A	803	XVZ	C14-C13-C17-C18
4	B	803	XVZ	C08-C09-C11-C12
5	C	805	GOL	C1-C2-C3-O3
5	D	805	GOL	C1-C2-C3-O3
3	A	802	H4B	C7-C6-C9-C10
4	C	803	XVZ	C12-C13-C17-C18
4	C	803	XVZ	C08-C09-C11-C12
3	A	802	H4B	N5-C6-C9-O9
4	C	803	XVZ	C14-C13-C17-C18

*Continued on next page...*

*Continued from previous page...*

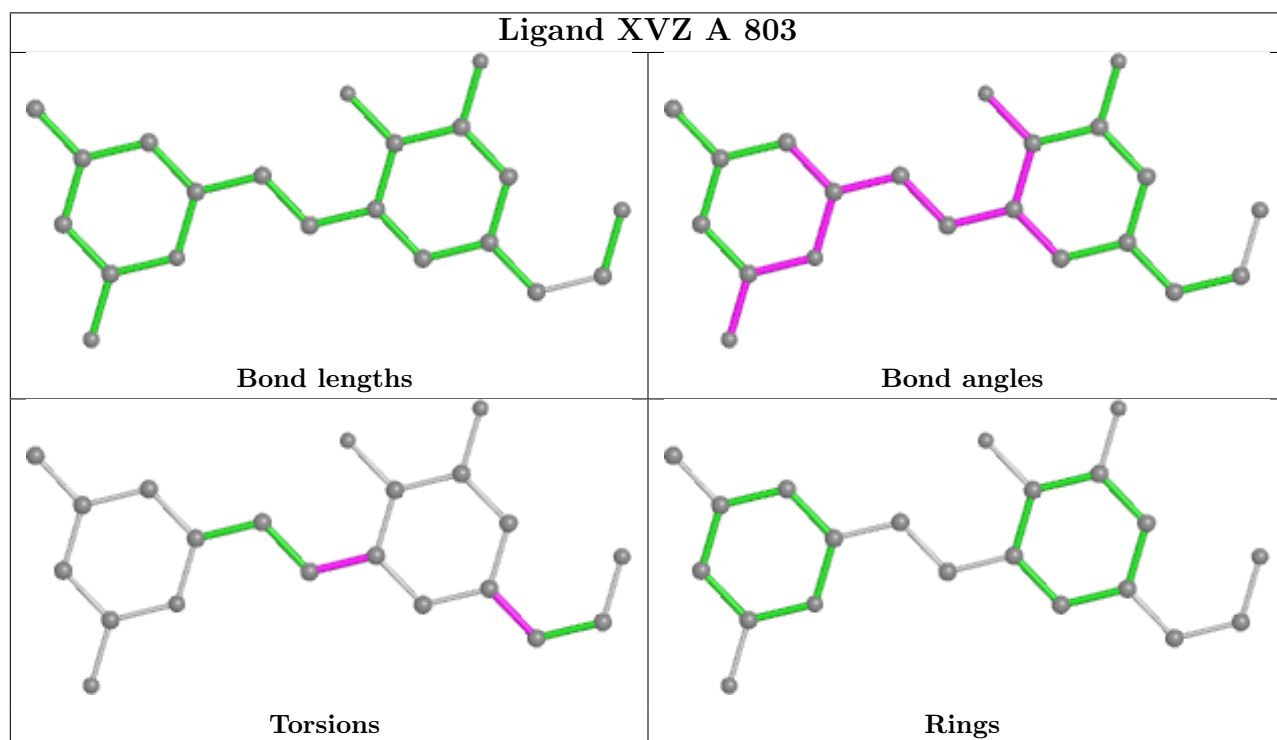
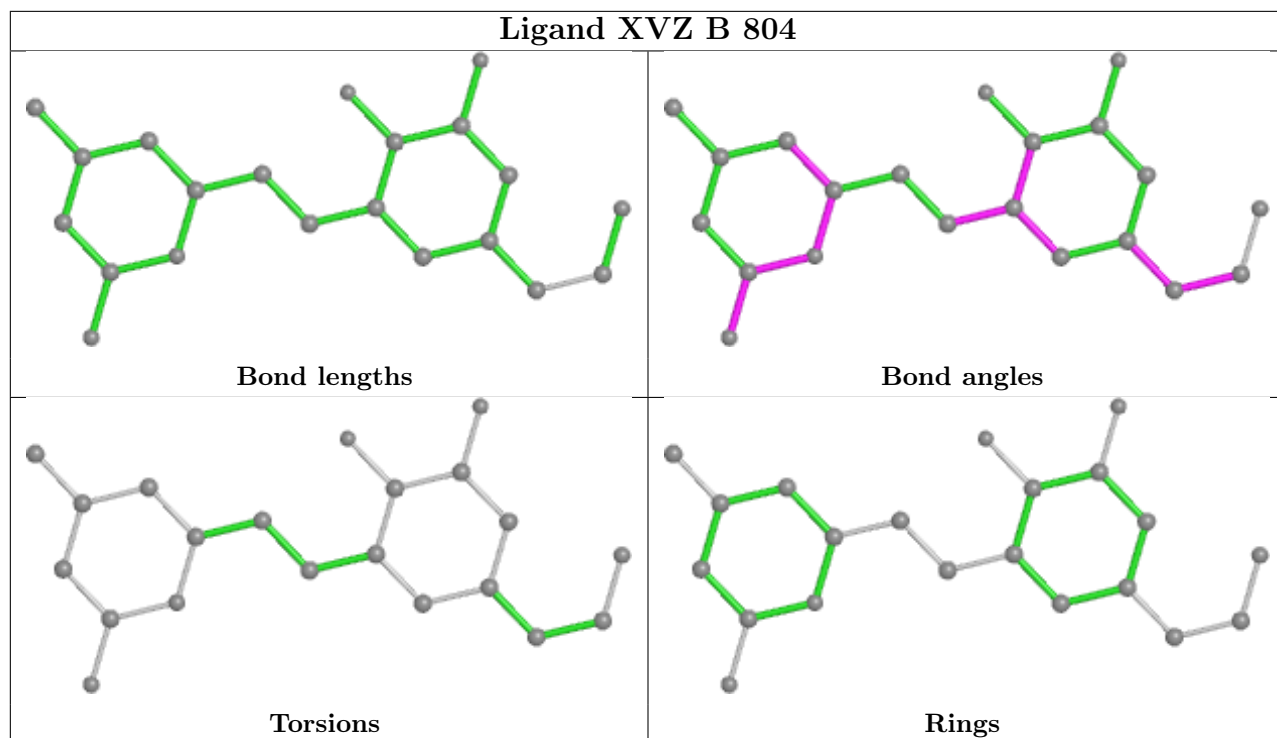
Mol	Chain	Res	Type	Atoms
3	C	802	H4B	C11-C10-C9-O9

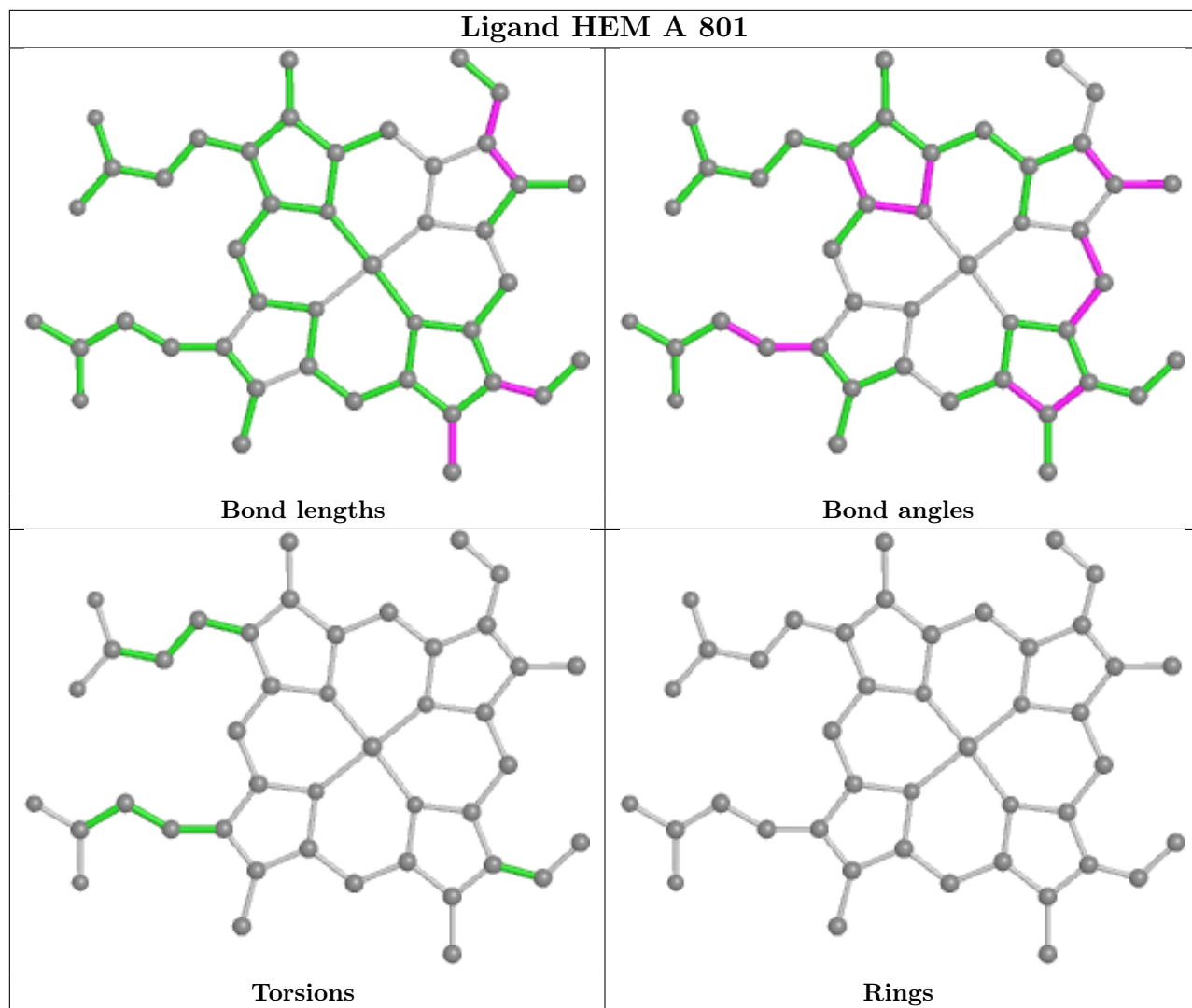
There are no ring outliers.

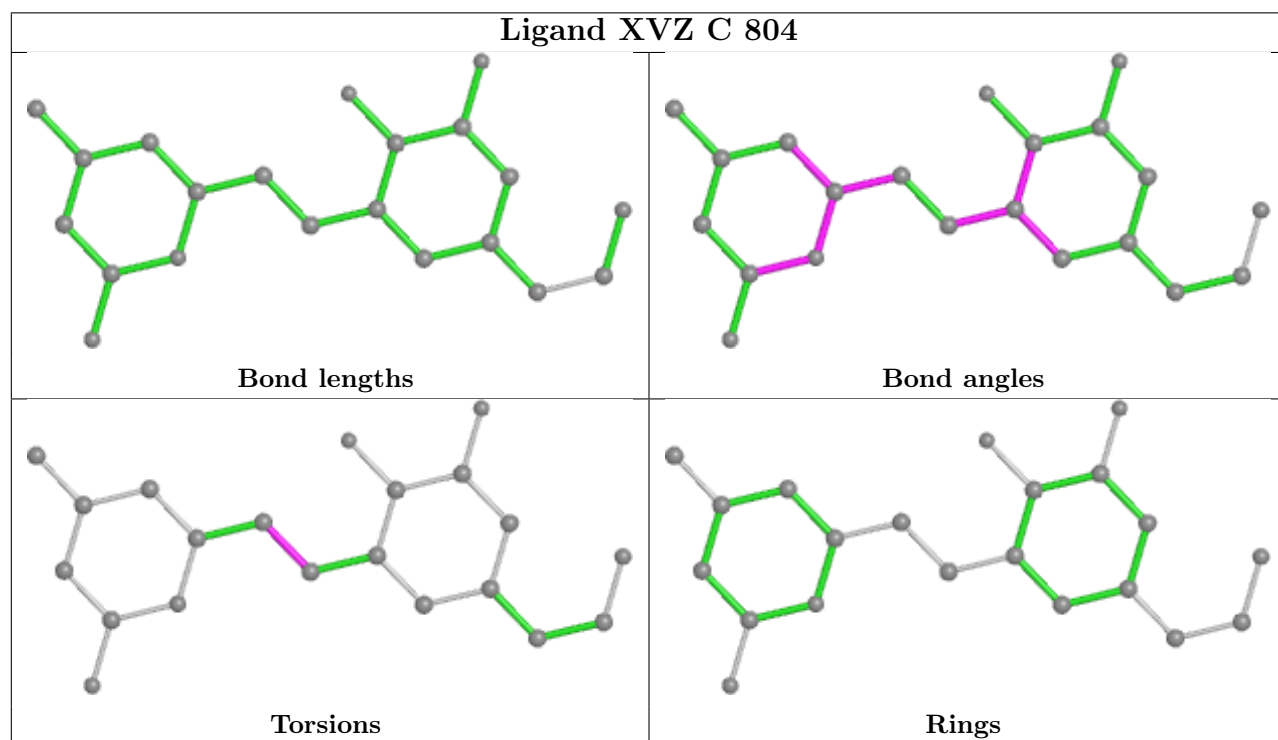
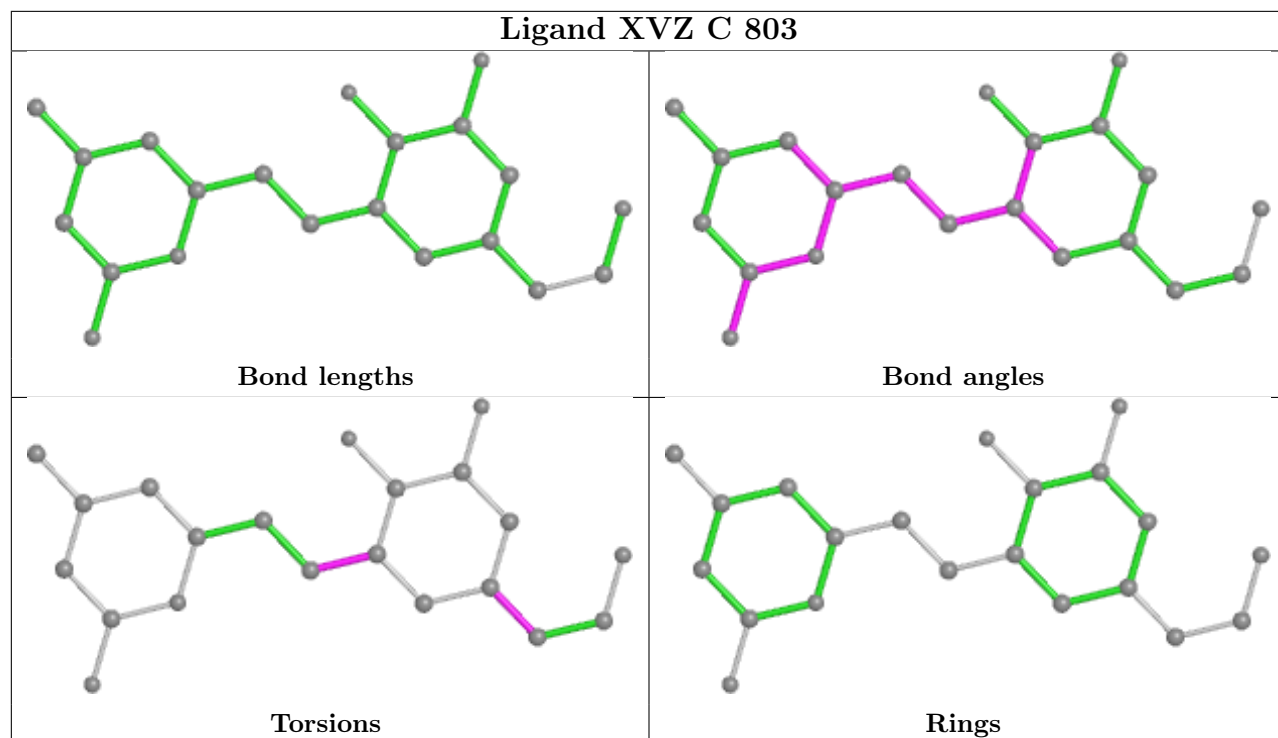
12 monomers are involved in 20 short contacts:

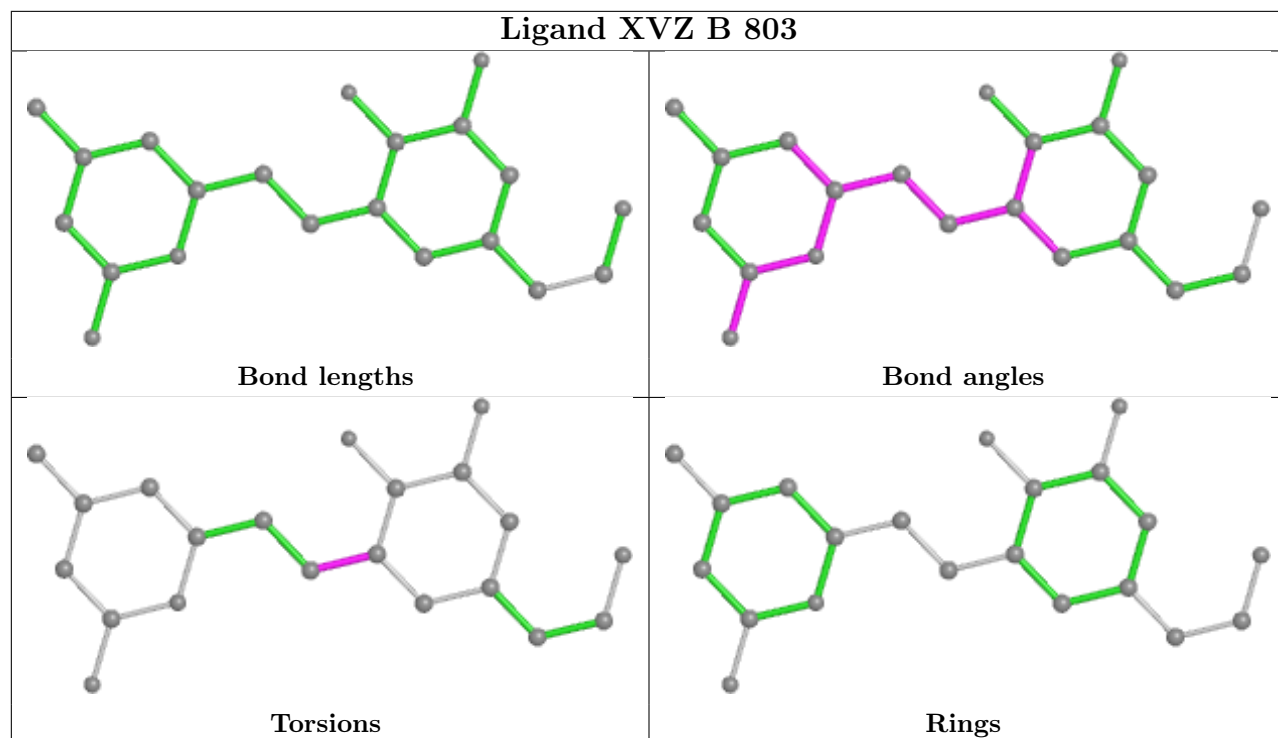
Mol	Chain	Res	Type	Clashes	Symm-Clashes
5	A	805	GOL	1	0
2	A	801	HEM	2	0
5	A	804	GOL	1	0
3	B	802	H4B	2	0
4	C	803	XVZ	1	0
4	C	804	XVZ	1	0
3	C	802	H4B	1	0
2	C	801	HEM	1	0
2	D	802	HEM	6	0
2	B	801	HEM	2	0
5	D	805	GOL	1	0
5	C	806	GOL	1	0

The following is a two-dimensional graphical depiction of Mogul quality analysis of bond lengths, bond angles, torsion angles, and ring geometry for all instances of the Ligand of Interest. In addition, ligands with molecular weight > 250 and outliers as shown on the validation Tables will also be included. For torsion angles, if less than 5% of the Mogul distribution of torsion angles is within 10 degrees of the torsion angle in question, then that torsion angle is considered an outlier. Any bond that is central to one or more torsion angles identified as an outlier by Mogul will be highlighted in the graph. For rings, the root-mean-square deviation (RMSD) between the ring in question and similar rings identified by Mogul is calculated over all ring torsion angles. If the average RMSD is greater than 60 degrees and the minimal RMSD between the ring in question and any Mogul-identified rings is also greater than 60 degrees, then that ring is considered an outlier. The outliers are highlighted in purple. The color gray indicates Mogul did not find sufficient equivalents in the CSD to analyse the geometry.

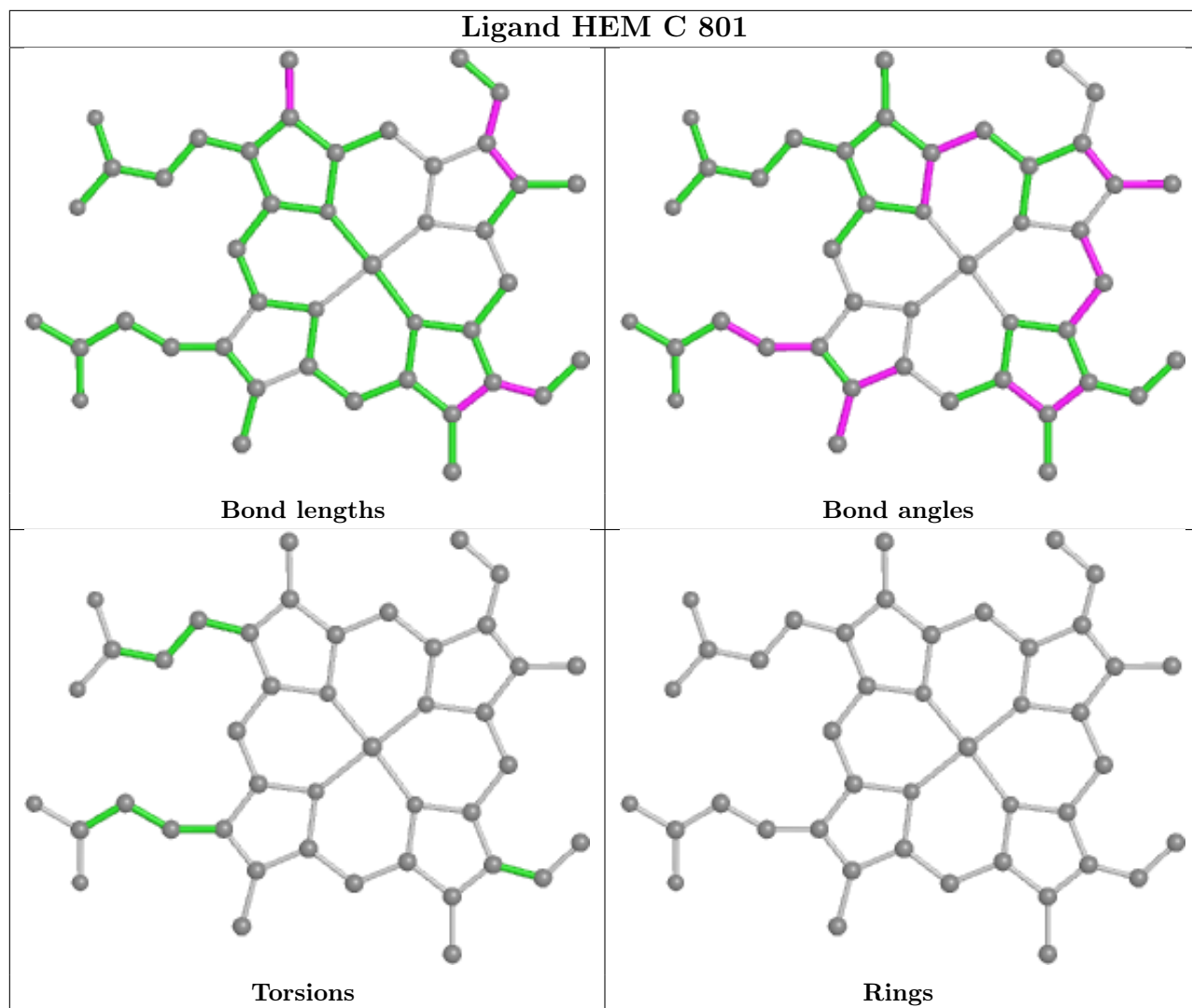


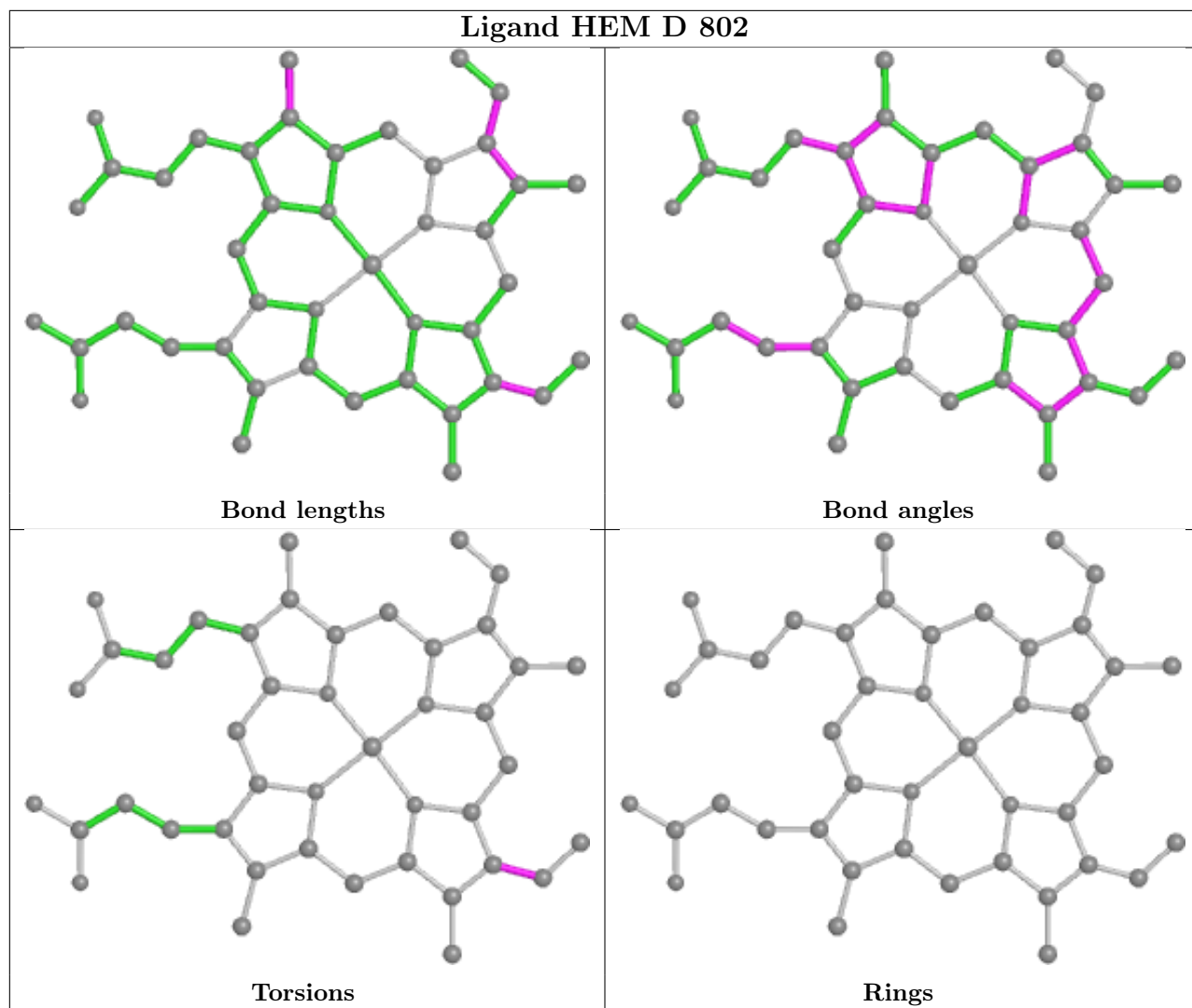


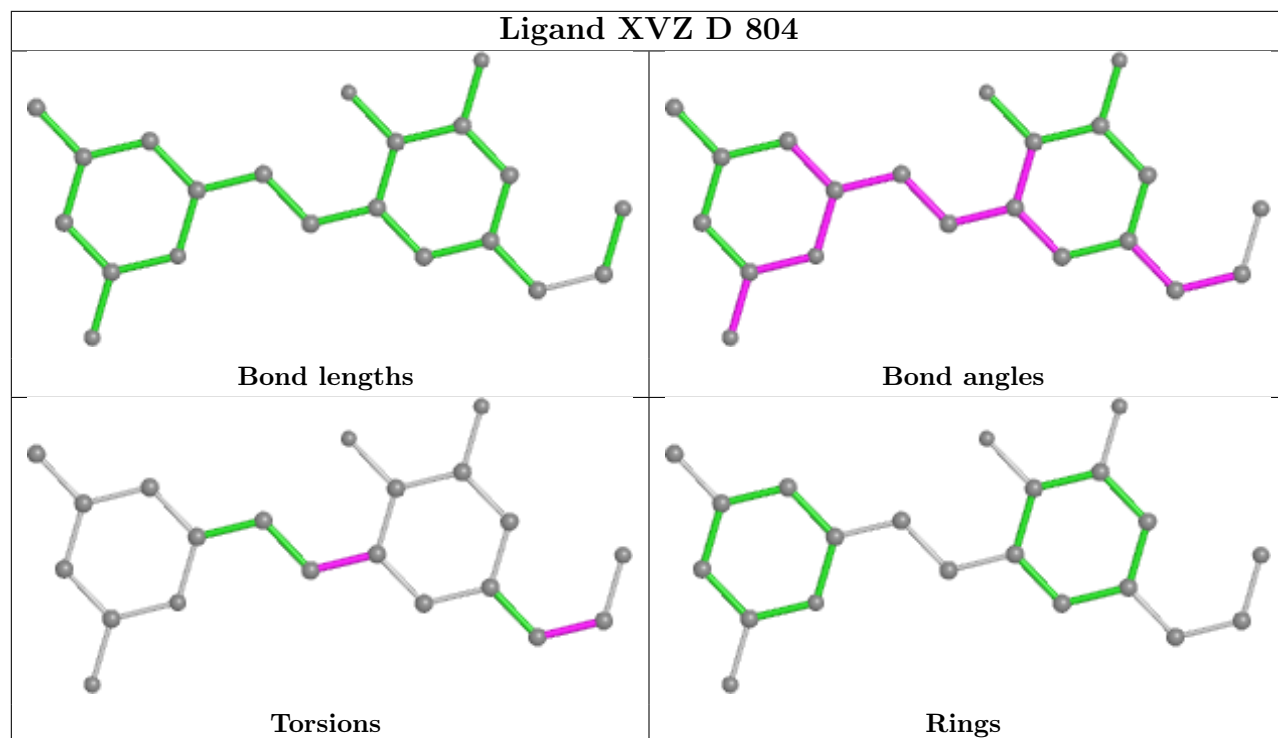


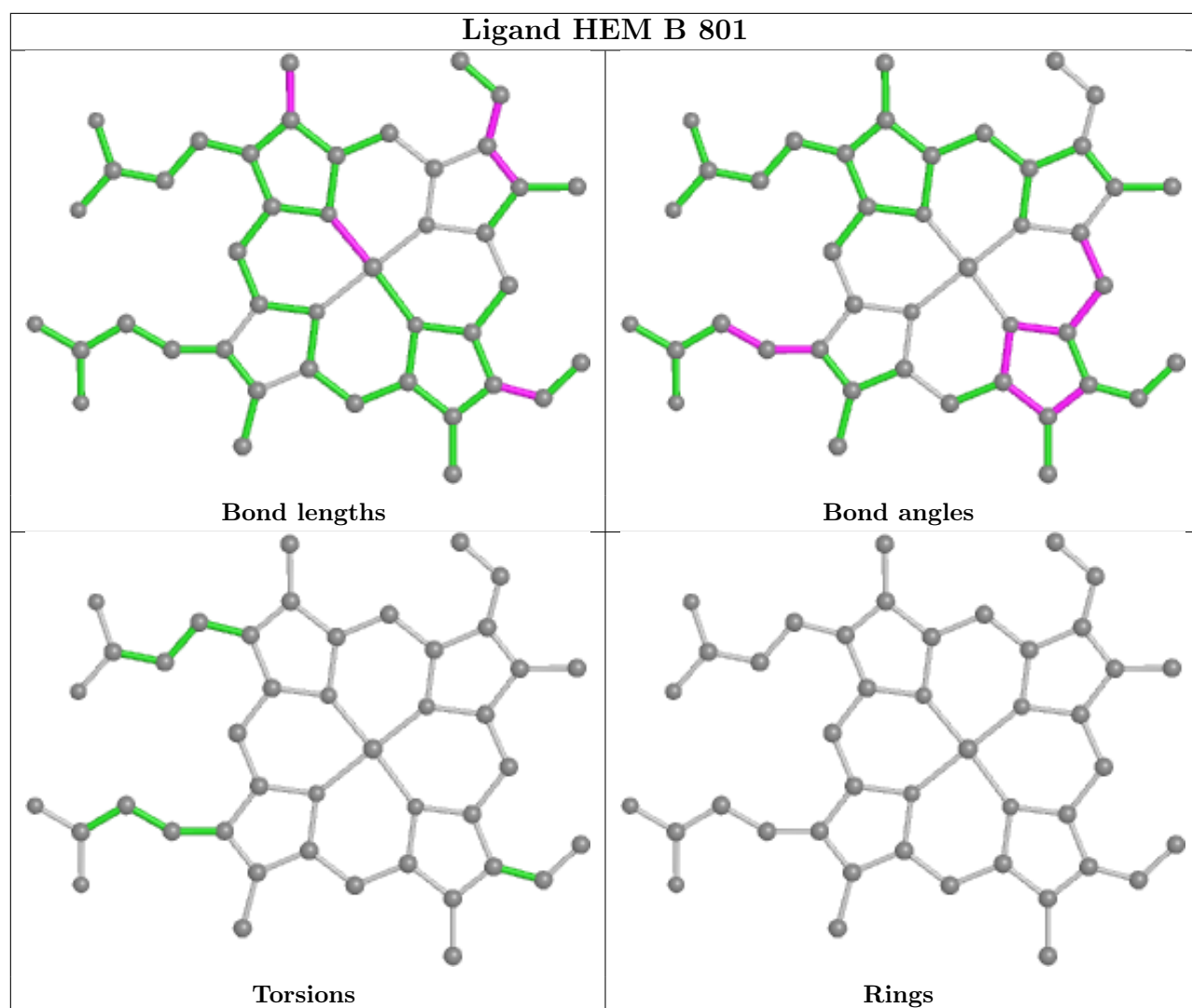












## 5.7 Other polymers [i](#)

There are no such residues in this entry.

## 5.8 Polymer linkage issues [i](#)

There are no chain breaks in this entry.

## 6 Fit of model and data

### 6.1 Protein, DNA and RNA chains

In the following table, the column labelled ‘#RSRZ > 2’ contains the number (and percentage) of RSRZ outliers, followed by percent RSRZ outliers for the chain as percentile scores relative to all X-ray entries and entries of similar resolution. The OWAB column contains the minimum, median, 95<sup>th</sup> percentile and maximum values of the occupancy-weighted average B-factor per residue. The column labelled ‘Q < 0.9’ lists the number of (and percentage) of residues with an average occupancy less than 0.9.

Mol	Chain	Analysed	<RSRZ>	#RSRZ>2	OWAB(Å <sup>2</sup> )	Q<0.9
1	A	409/423 (96%)	0.23	21 (5%) 28 36	44, 69, 127, 150	0
1	B	413/423 (97%)	-0.01	3 (0%) 87 91	37, 57, 87, 136	0
1	C	417/423 (98%)	-0.02	7 (1%) 70 76	38, 56, 90, 130	0
1	D	410/423 (96%)	0.23	25 (6%) 21 28	41, 70, 123, 146	0
All	All	1649/1692 (97%)	0.11	56 (3%) 45 53	37, 62, 113, 150	0

All (56) RSRZ outliers are listed below:

Mol	Chain	Res	Type	RSRZ
1	D	495	GLY	6.2
1	B	305	PHE	5.0
1	A	389	VAL	4.5
1	C	305	PHE	4.2
1	D	360	PHE	4.0
1	D	393	ILE	4.0
1	A	354	ALA	3.9
1	A	393	ILE	3.7
1	D	371	TYR	3.7
1	A	327	LEU	3.7
1	A	359	LEU	3.6
1	A	395	THR	3.4
1	B	327	LEU	3.4
1	D	327	LEU	3.4
1	A	371	TYR	3.4
1	D	305	PHE	3.3
1	D	374	ILE	3.1
1	D	396	THR	3.1
1	A	396	THR	3.0
1	D	359	LEU	3.0
1	D	304	ARG	3.0

*Continued on next page...*

*Continued from previous page...*

Mol	Chain	Res	Type	RSRZ
1	A	304	ARG	2.9
1	A	407	ILE	2.9
1	C	723	LEU	2.9
1	A	379	SER	2.9
1	A	391	LYS	2.9
1	D	380	LYS	2.9
1	D	493	PRO	2.9
1	D	376	ARG	2.8
1	A	390	ASN	2.8
1	C	724	VAL	2.7
1	D	498	LEU	2.6
1	A	388	GLU	2.5
1	A	386	LEU	2.5
1	C	609	TYR	2.5
1	C	360	PHE	2.5
1	D	491	LYS	2.5
1	A	616	ALA	2.5
1	A	380	LYS	2.4
1	C	303	PRO	2.4
1	D	721	TRP	2.4
1	A	355	THR	2.4
1	D	387	GLU	2.3
1	A	367	ILE	2.3
1	B	672	ARG	2.3
1	D	356	LYS	2.2
1	D	367	ILE	2.2
1	A	384	GLU	2.2
1	D	557	GLU	2.2
1	D	386	LEU	2.2
1	D	559	PHE	2.2
1	D	672	ARG	2.1
1	A	399	TYR	2.1
1	C	624	ARG	2.0
1	D	529	LEU	2.0
1	D	384	GLU	2.0

## 6.2 Non-standard residues in protein, DNA, RNA chains

There are no non-standard protein/DNA/RNA residues in this entry.

### 6.3 Carbohydrates [i](#)

There are no monosaccharides in this entry.

### 6.4 Ligands [i](#)

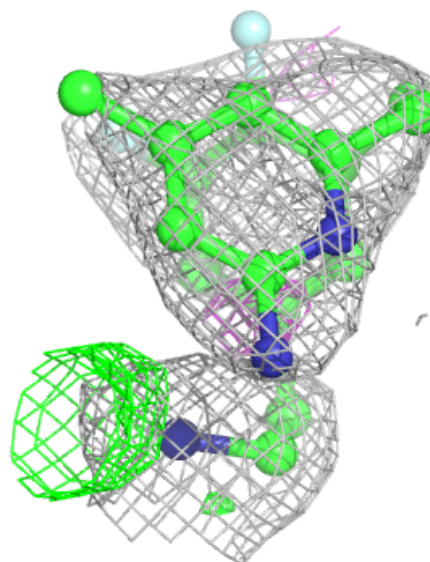
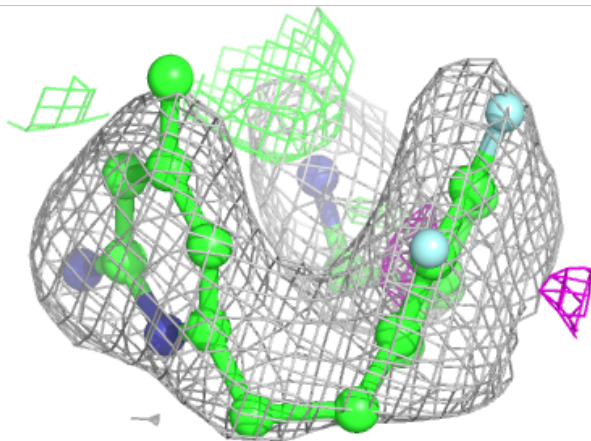
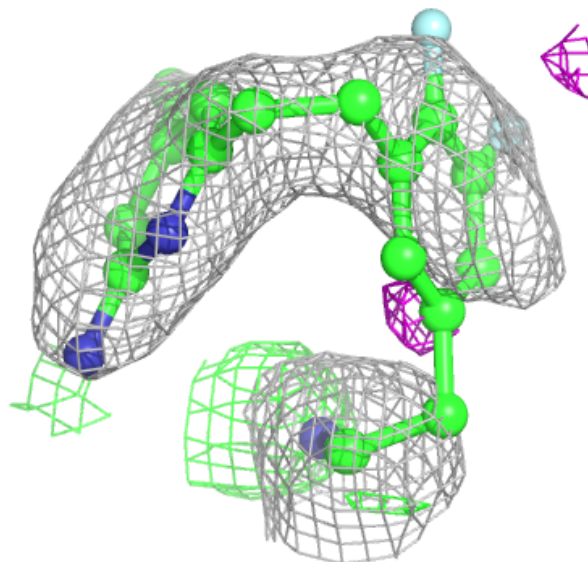
In the following table, the Atoms column lists the number of modelled atoms in the group and the number defined in the chemical component dictionary. The B-factors column lists the minimum, median, 95<sup>th</sup> percentile and maximum values of B factors of atoms in the group. The column labelled 'Q< 0.9' lists the number of atoms with occupancy less than 0.9.

Mol	Type	Chain	Res	Atoms	RSCC	RSR	B-factors(Å <sup>2</sup> )	Q<0.9
5	GOL	A	804	6/6	0.70	0.47	76,94,98,99	0
4	XVZ	B	804	21/21	0.78	0.22	75,85,111,117	0
4	XVZ	C	804	21/21	0.82	0.26	77,84,109,110	0
5	GOL	D	805	6/6	0.87	0.22	82,83,84,85	0
4	XVZ	A	803	21/21	0.89	0.25	39,69,106,109	0
4	XVZ	D	804	21/21	0.91	0.22	41,69,107,112	0
5	GOL	C	805	6/6	0.92	0.16	72,74,75,76	0
4	XVZ	C	803	21/21	0.92	0.18	39,70,98,98	0
3	H4B	C	802	17/17	0.94	0.11	47,56,64,64	0
5	GOL	A	805	6/6	0.94	0.13	73,74,77,79	0
5	GOL	B	805	6/6	0.95	0.32	84,85,88,91	0
3	H4B	D	803	17/17	0.95	0.12	52,61,71,76	0
5	GOL	C	806	6/6	0.95	0.09	49,55,64,72	0
4	XVZ	B	803	21/21	0.95	0.19	40,77,105,108	0
3	H4B	B	802	17/17	0.96	0.10	48,55,62,63	0
3	H4B	A	802	17/17	0.97	0.09	53,59,73,76	0
2	HEM	A	801	43/43	0.98	0.13	40,52,61,72	0
2	HEM	B	801	43/43	0.98	0.13	29,46,57,80	0
2	HEM	C	801	43/43	0.98	0.15	32,45,61,78	0
2	HEM	D	802	43/43	0.98	0.14	38,53,66,73	0
6	ZN	A	806	1/1	0.99	0.16	55,55,55,55	0
6	ZN	D	801	1/1	0.99	0.14	55,55,55,55	0

The following is a graphical depiction of the model fit to experimental electron density of all instances of the Ligand of Interest. In addition, ligands with molecular weight > 250 and outliers as shown on the geometry validation Tables will also be included. Each fit is shown from different orientation to approximate a three-dimensional view.

**Electron density around XVZ B 804:**

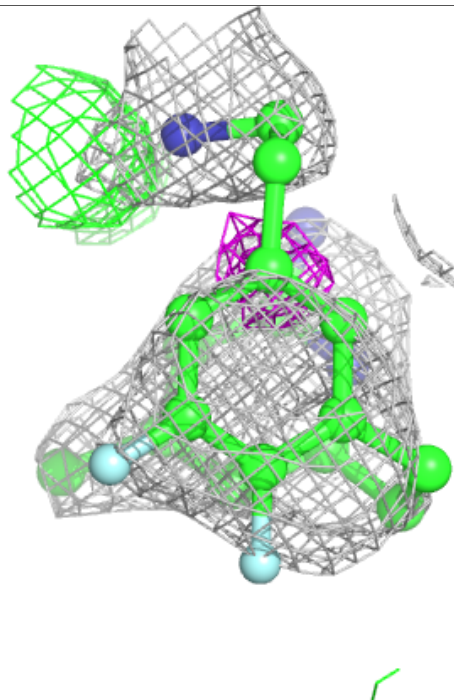
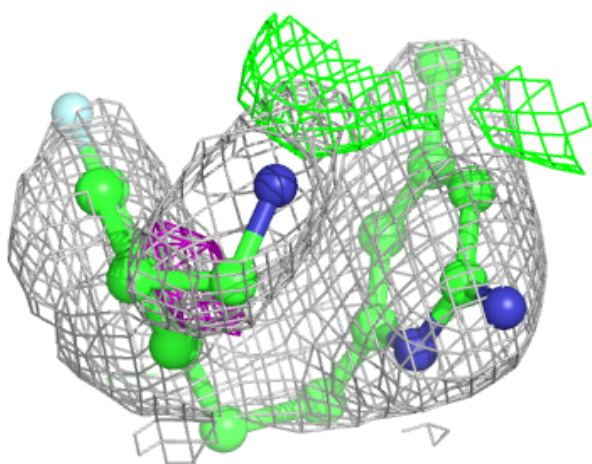
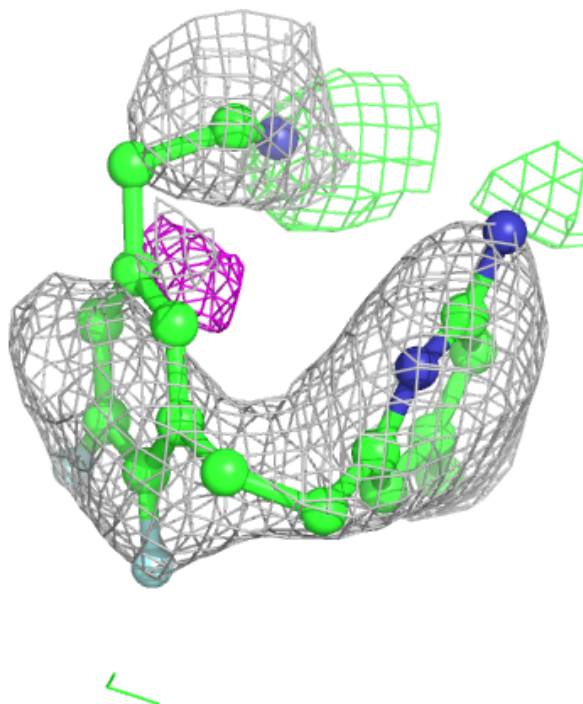
$2mF_o-DF_c$  (at 0.7 rmsd) in gray  
 $mF_o-DF_c$  (at 3 rmsd) in purple (negative)  
and green (positive)

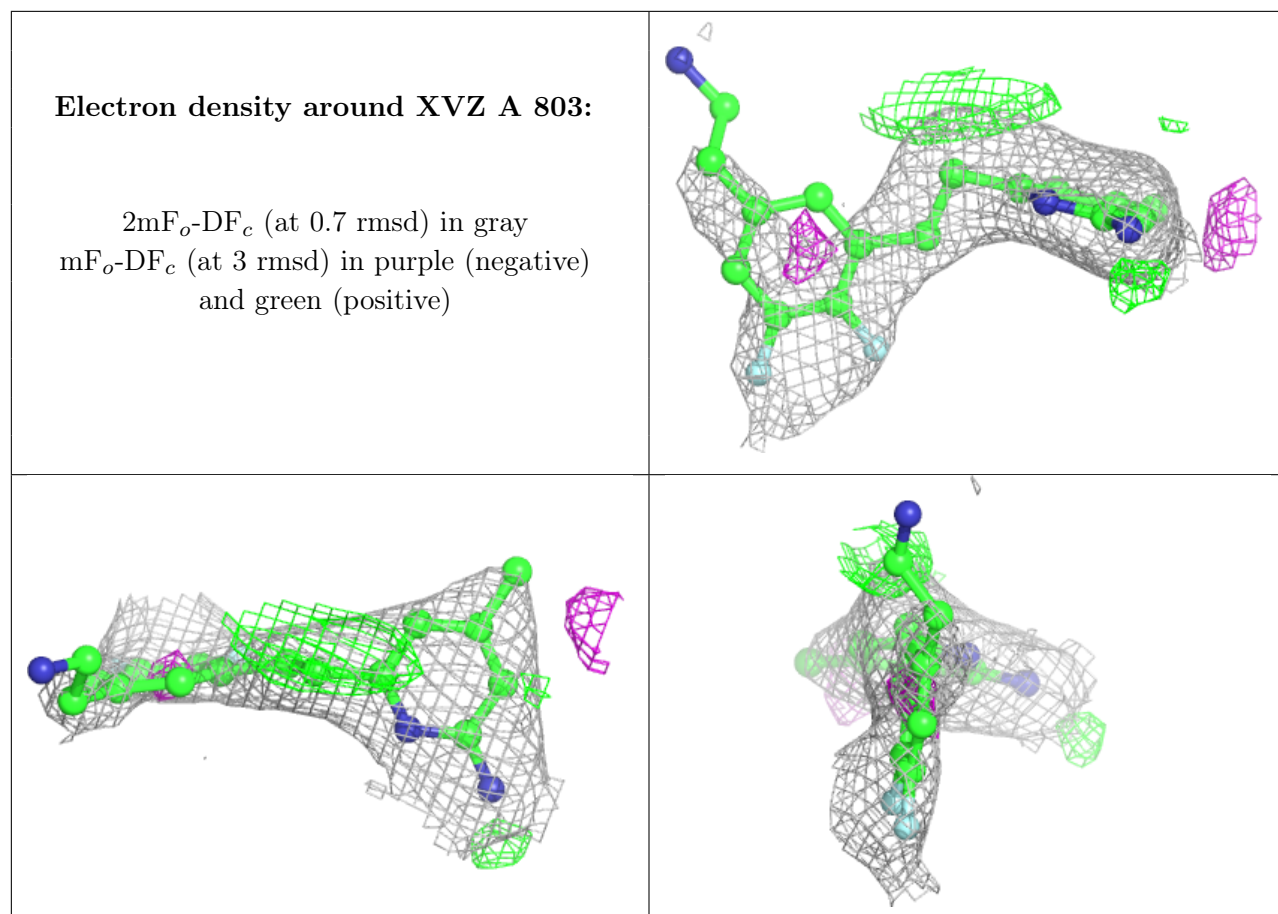




**Electron density around XVZ C 804:**

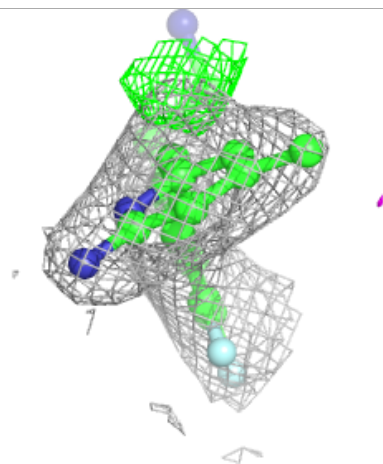
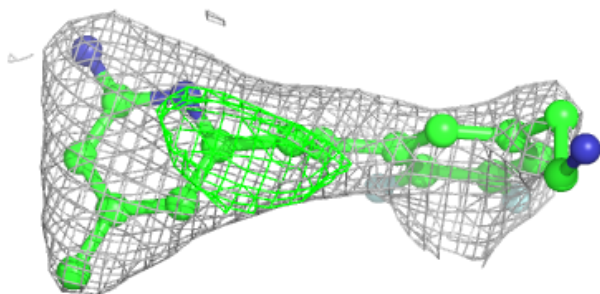
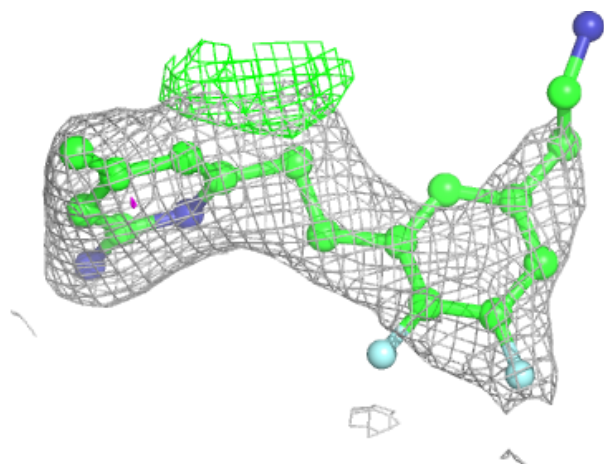
$2mF_o-DF_c$  (at 0.7 rmsd) in gray  
 $mF_o-DF_c$  (at 3 rmsd) in purple (negative)  
and green (positive)





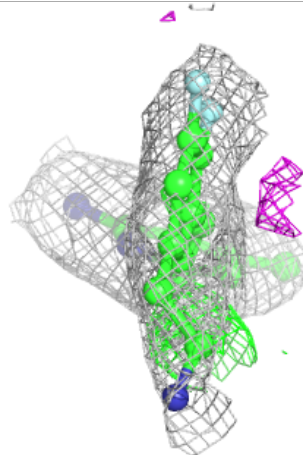
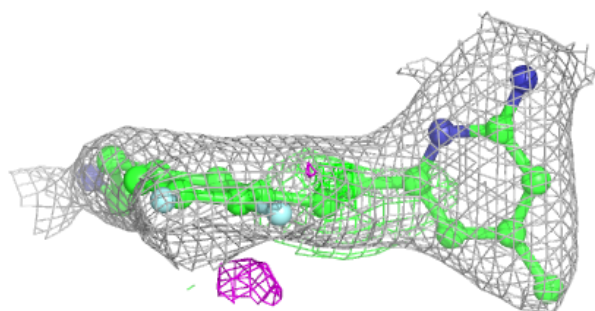
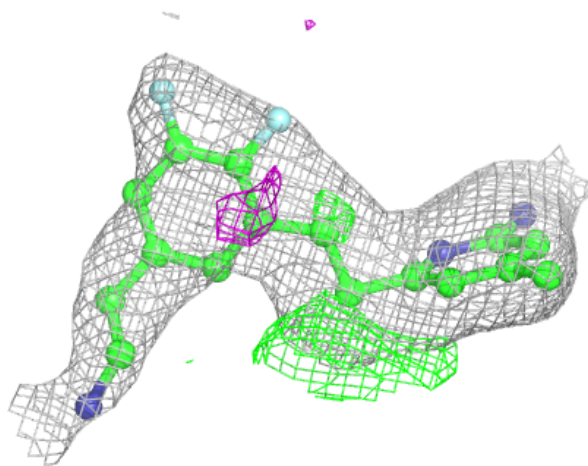
**Electron density around XVZ D 804:**

$2mF_o-DF_c$  (at 0.7 rmsd) in gray  
 $mF_o-DF_c$  (at 3 rmsd) in purple (negative)  
and green (positive)



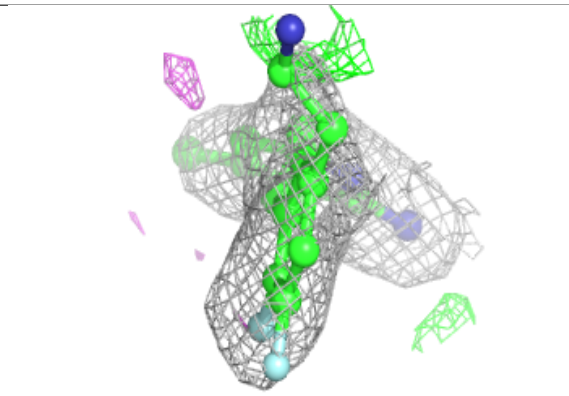
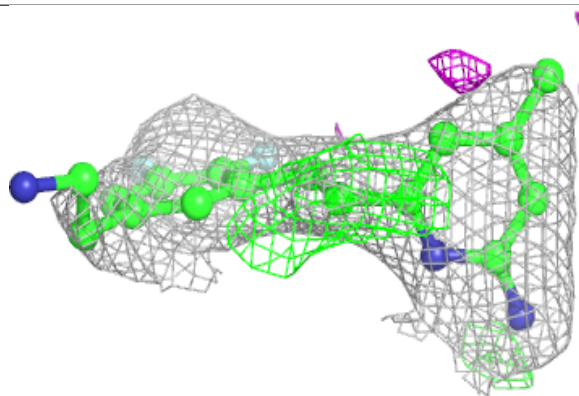
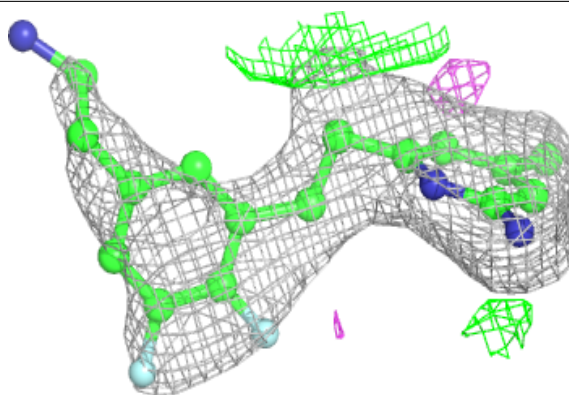
**Electron density around XVZ C 803:**

$2mF_o-DF_c$  (at 0.7 rmsd) in gray  
 $mF_o-DF_c$  (at 3 rmsd) in purple (negative)  
and green (positive)

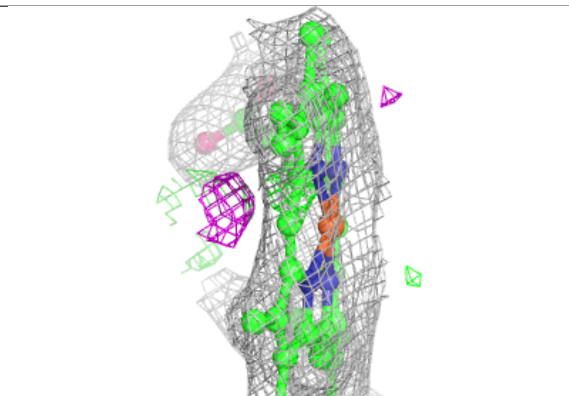
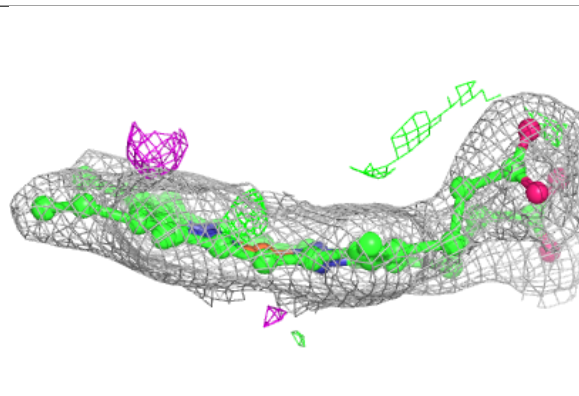
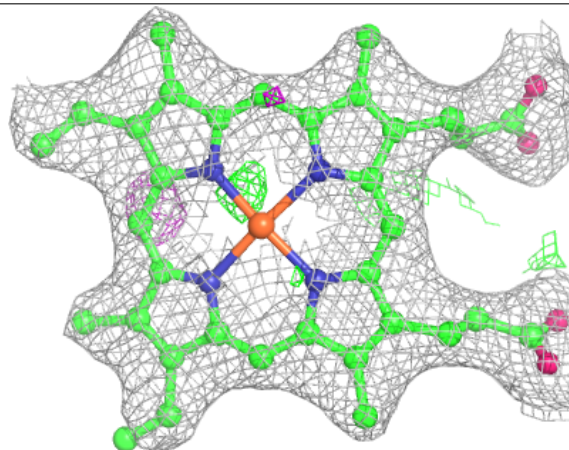


**Electron density around XVZ B 803:**

$2mF_o-DF_c$  (at 0.7 rmsd) in gray  
 $mF_o-DF_c$  (at 3 rmsd) in purple (negative)  
and green (positive)

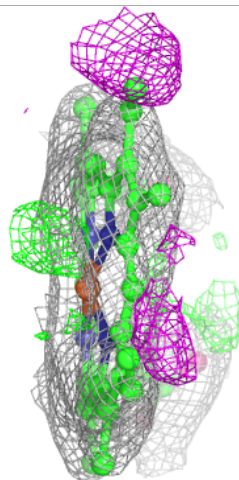
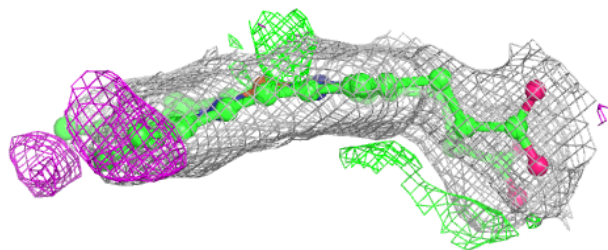
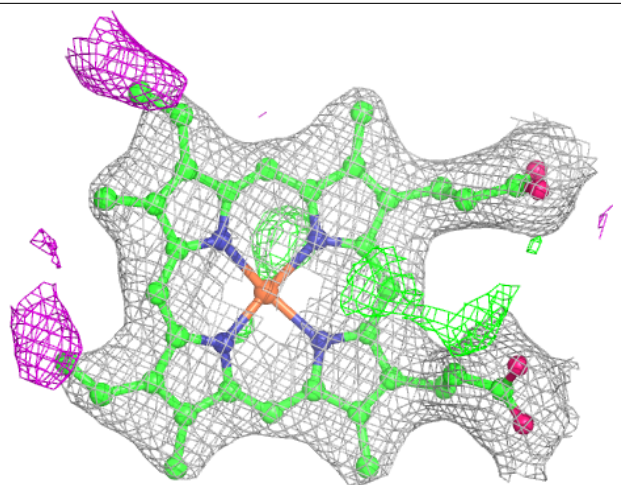
**Electron density around HEM A 801:**

$2mF_o-DF_c$  (at 0.7 rmsd) in gray  
 $mF_o-DF_c$  (at 3 rmsd) in purple (negative)  
and green (positive)



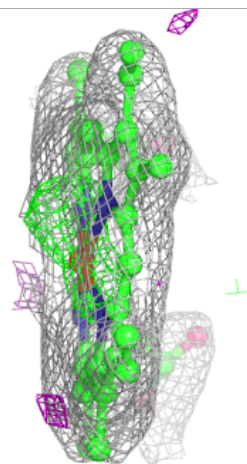
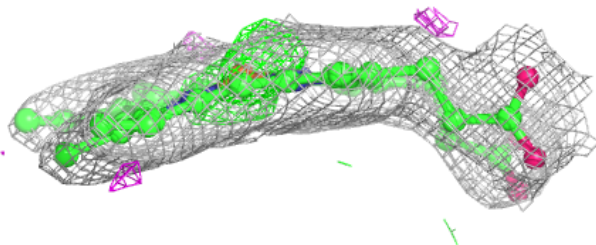
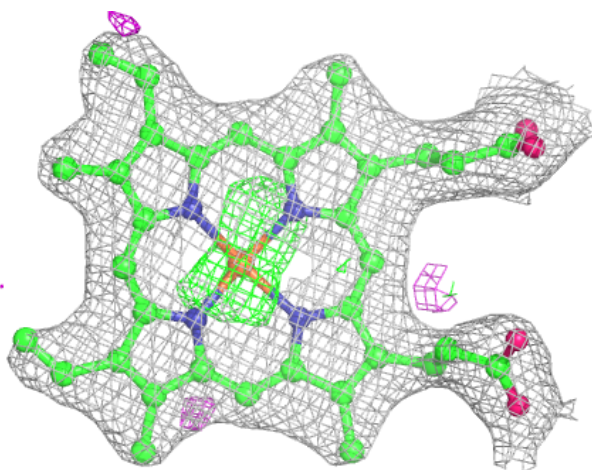
**Electron density around HEM B 801:**

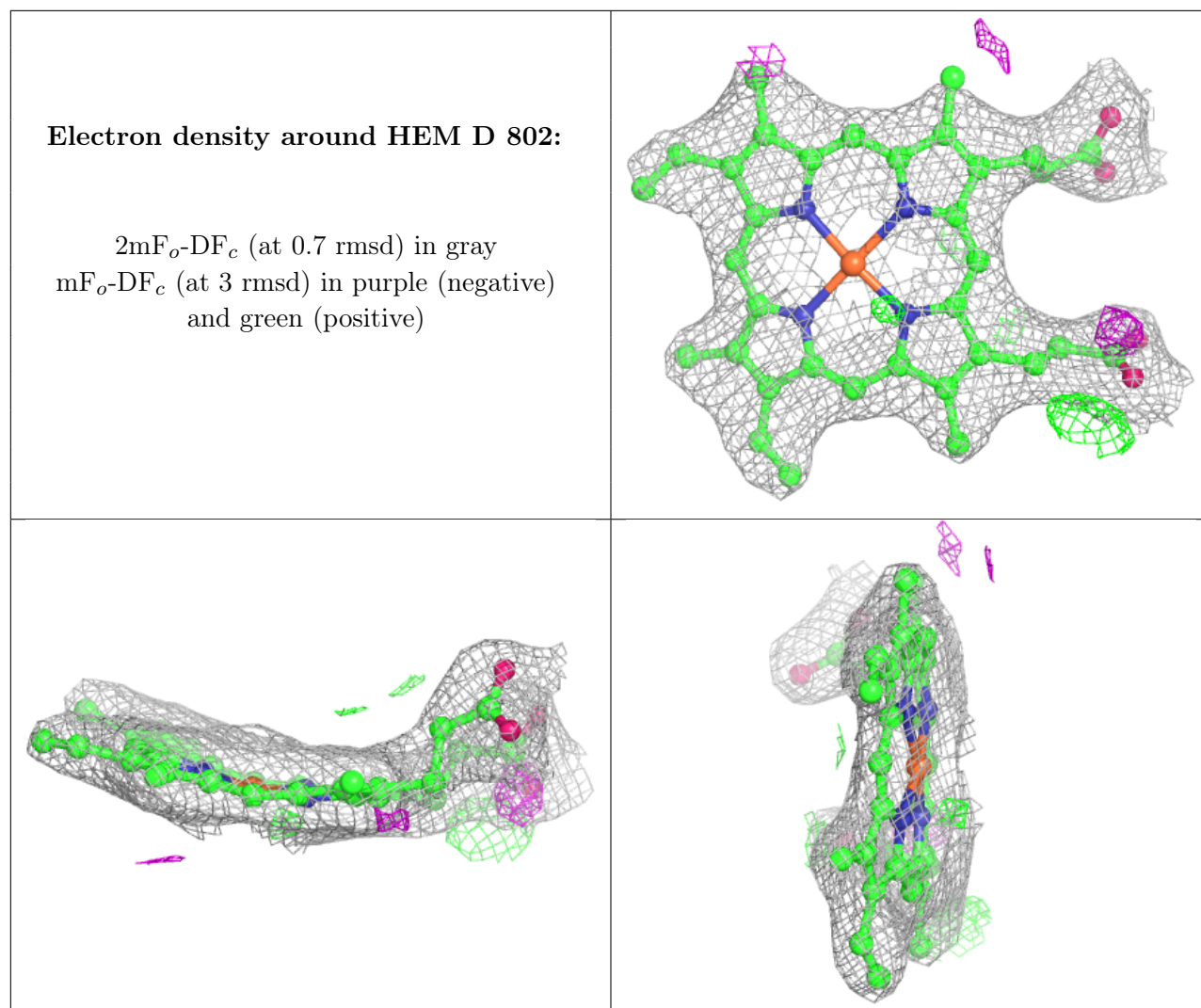
$2mF_o-DF_c$  (at 0.7 rmsd) in gray  
 $mF_o-DF_c$  (at 3 rmsd) in purple (negative)  
and green (positive)



**Electron density around HEM C 801:**

$2mF_o-DF_c$  (at 0.7 rmsd) in gray  
 $mF_o-DF_c$  (at 3 rmsd) in purple (negative)  
and green (positive)





## 6.5 Other polymers [i](#)

There are no such residues in this entry.