



Full wwPDB EM Validation Report ⓘ

Oct 3, 2023 – 12:43 PM JST

PDB ID : 8KD7
EMDB ID : EMD-37127
Title : Rpd3S in complex with nucleosome with H3K36MLA modification and 167bp DNA
Authors : Dong, S.; Li, H.; Wang, M.; Rasheed, N.; Zou, B.; Gao, X.; Guan, J.; Li, W.; Zhang, J.; Wang, C.; Zhou, N.; Shi, X.; Li, M.; Zhou, M.; Huang, J.; Li, H.; Zhang, Y.; Wong, K.H.; Chang, X.; Chao, W.C.H.; He, J.
Deposited on : 2023-08-09
Resolution : 3.09 Å(reported)

This is a Full wwPDB EM Validation Report for a publicly released PDB entry.

We welcome your comments at validation@mail.wwpdb.org

A user guide is available at

<https://www.wwpdb.org/validation/2017/EMValidationReportHelp>

with specific help available everywhere you see the ⓘ symbol.

The types of validation reports are described at

<http://www.wwpdb.org/validation/2017/FAQs#types>.

The following versions of software and data (see [references ⓘ](#)) were used in the production of this report:

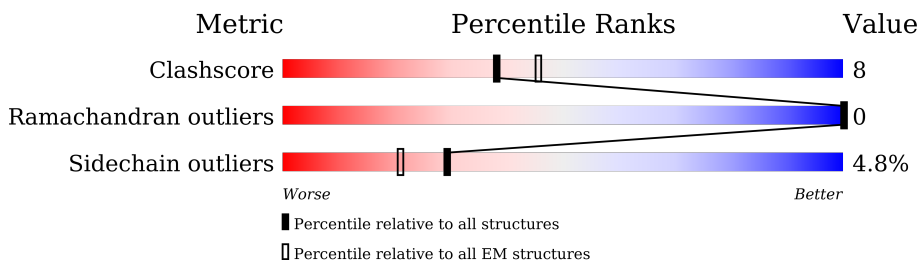
EMDB validation analysis : 0.0.1.dev50
Mogul : 1.8.5 (274361), CSD as541be (2020)
MolProbity : 4.02b-467
Percentile statistics : 20191225.v01 (using entries in the PDB archive December 25th 2019)
MapQ : 1.9.9
Ideal geometry (proteins) : Engh & Huber (2001)
Ideal geometry (DNA, RNA) : Parkinson et al. (1996)
Validation Pipeline (wwPDB-VP) : 2.35.1

1 Overall quality at a glance

The following experimental techniques were used to determine the structure:
ELECTRON MICROSCOPY

The reported resolution of this entry is 3.09 Å.

Percentile scores (ranging between 0-100) for global validation metrics of the entry are shown in the following graphic. The table shows the number of entries on which the scores are based.






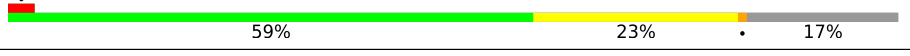
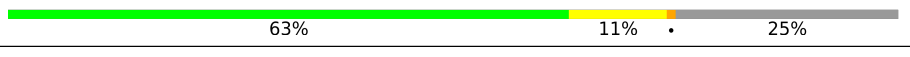



Metric	Whole archive (#Entries)	EM structures (#Entries)
Clashscore	158937	4297
Ramachandran outliers	154571	4023
Sidechain outliers	154315	3826

The table below summarises the geometric issues observed across the polymeric chains and their fit to the map. The red, orange, yellow and green segments of the bar indicate the fraction of residues that contain outliers for ≥ 3 , 2, 1 and 0 types of geometric quality criteria respectively. A grey segment represents the fraction of residues that are not modelled. The numeric value for each fraction is indicated below the corresponding segment, with a dot representing fractions $\leq 5\%$. The upper red bar (where present) indicates the fraction of residues that have poor fit to the EM map (all-atom inclusion $< 40\%$). The numeric value is given above the bar.

Mol	Chain	Length	Quality of chain
1	A	433	
2	B	1371	
3	D	401	
3	F	401	
4	E	733	
4	G	733	
5	O	135	
5	S	135	

Continued on next page...

Continued from previous page...

Mol	Chain	Length	Quality of chain
6	P	102	 62% 15% 23%
6	T	102	 60% 18% 23%
7	Q	129	 71% 12% 17%
7	U	129	 59% 23% 17%
8	R	122	 63% 11% 25%
8	V	122	 60% 15% 25%
9	X	167	 5% 75% 17% 8%
10	Y	167	 5% 69% 22% 9%

2 Entry composition

There are 10 unique types of molecules in this entry. The entry contains 24894 atoms, of which 0 are hydrogens and 0 are deuteriums.

In the tables below, the AltConf column contains the number of residues with at least one atom in alternate conformation and the Trace column contains the number of residues modelled with at most 2 atoms.

- Molecule 1 is a protein called Histone deacetylase RPD3.

Mol	Chain	Residues	Atoms					AltConf	Trace
			Total	C	N	O	S		
1	A	385	3050	1933	517	575	25	0	0

- Molecule 2 is a protein called Transcriptional regulatory protein SIN3.

Mol	Chain	Residues	Atoms					AltConf	Trace
			Total	C	N	O	S		
2	B	536	4498	2895	756	833	14	0	0

There are 49 discrepancies between the modelled and reference sequences:

Chain	Residue	Modelled	Actual	Comment	Reference
B	166	MET	-	initiating methionine	UNP P22579
B	167	HIS	-	expression tag	UNP P22579
B	168	HIS	-	expression tag	UNP P22579
B	169	HIS	-	expression tag	UNP P22579
B	170	HIS	-	expression tag	UNP P22579
B	171	HIS	-	expression tag	UNP P22579
B	172	HIS	-	expression tag	UNP P22579
B	173	HIS	-	expression tag	UNP P22579
B	174	HIS	-	expression tag	UNP P22579
B	175	PRO	-	expression tag	UNP P22579
B	176	GLN	-	expression tag	UNP P22579
B	177	LEU	-	expression tag	UNP P22579
B	178	ALA	-	expression tag	UNP P22579
B	179	MET	-	expression tag	UNP P22579
B	180	TRP	-	expression tag	UNP P22579
B	181	SER	-	expression tag	UNP P22579
B	182	HIS	-	expression tag	UNP P22579
B	183	PRO	-	expression tag	UNP P22579
B	184	GLN	-	expression tag	UNP P22579
B	185	PHE	-	expression tag	UNP P22579
B	186	GLU	-	expression tag	UNP P22579

Continued on next page...

Continued from previous page...

Chain	Residue	Modelled	Actual	Comment	Reference
B	187	LYS	-	expression tag	UNP P22579
B	188	GLY	-	expression tag	UNP P22579
B	189	GLY	-	expression tag	UNP P22579
B	190	GLY	-	expression tag	UNP P22579
B	191	SER	-	expression tag	UNP P22579
B	192	GLY	-	expression tag	UNP P22579
B	193	GLY	-	expression tag	UNP P22579
B	194	GLY	-	expression tag	UNP P22579
B	195	SER	-	expression tag	UNP P22579
B	196	GLY	-	expression tag	UNP P22579
B	197	GLY	-	expression tag	UNP P22579
B	198	GLY	-	expression tag	UNP P22579
B	199	SER	-	expression tag	UNP P22579
B	200	TRP	-	expression tag	UNP P22579
B	201	SER	-	expression tag	UNP P22579
B	202	HIS	-	expression tag	UNP P22579
B	203	PRO	-	expression tag	UNP P22579
B	204	GLN	-	expression tag	UNP P22579
B	205	PHE	-	expression tag	UNP P22579
B	206	GLU	-	expression tag	UNP P22579
B	207	LYS	-	expression tag	UNP P22579
B	208	GLU	-	expression tag	UNP P22579
B	209	ASN	-	expression tag	UNP P22579
B	210	LEU	-	expression tag	UNP P22579
B	211	TYR	-	expression tag	UNP P22579
B	212	PHE	-	expression tag	UNP P22579
B	213	GLN	-	expression tag	UNP P22579
B	214	SER	-	expression tag	UNP P22579

- Molecule 3 is a protein called Chromatin modification-related protein EAF3.

Mol	Chain	Residues	Atoms					AltConf	Trace
3	D	188	Total	C	N	O	S	0	0
			1535	986	249	292	8		
3	F	61	Total	C	N	O	S	0	0
			473	301	73	94	5		

- Molecule 4 is a protein called Transcriptional regulatory protein RCO1.

Mol	Chain	Residues	Atoms					AltConf	Trace
4	E	302	Total	C	N	O	S	0	0
			2491	1584	436	454	17		

Continued on next page...

Continued from previous page...

Mol	Chain	Residues	Atoms					AltConf	Trace
			Total	C	N	O	S		
4	G	69	564	363	91	105	5	0	0

There are 98 discrepancies between the modelled and reference sequences:

Chain	Residue	Modelled	Actual	Comment	Reference
E	685	MET	-	expression tag	UNP Q04779
E	686	HIS	-	expression tag	UNP Q04779
E	687	HIS	-	expression tag	UNP Q04779
E	688	HIS	-	expression tag	UNP Q04779
E	689	HIS	-	expression tag	UNP Q04779
E	690	HIS	-	expression tag	UNP Q04779
E	691	HIS	-	expression tag	UNP Q04779
E	692	HIS	-	expression tag	UNP Q04779
E	693	HIS	-	expression tag	UNP Q04779
E	694	PRO	-	expression tag	UNP Q04779
E	695	GLN	-	expression tag	UNP Q04779
E	696	LEU	-	expression tag	UNP Q04779
E	697	ALA	-	expression tag	UNP Q04779
E	698	MET	-	expression tag	UNP Q04779
E	699	TRP	-	expression tag	UNP Q04779
E	700	SER	-	expression tag	UNP Q04779
E	701	HIS	-	expression tag	UNP Q04779
E	702	PRO	-	expression tag	UNP Q04779
E	703	GLN	-	expression tag	UNP Q04779
E	704	PHE	-	expression tag	UNP Q04779
E	705	GLU	-	expression tag	UNP Q04779
E	706	LYS	-	expression tag	UNP Q04779
E	707	GLY	-	expression tag	UNP Q04779
E	708	GLY	-	expression tag	UNP Q04779
E	709	GLY	-	expression tag	UNP Q04779
E	710	SER	-	expression tag	UNP Q04779
E	711	GLY	-	expression tag	UNP Q04779
E	712	GLY	-	expression tag	UNP Q04779
E	713	GLY	-	expression tag	UNP Q04779
E	714	SER	-	expression tag	UNP Q04779
E	715	GLY	-	expression tag	UNP Q04779
E	716	GLY	-	expression tag	UNP Q04779
E	717	GLY	-	expression tag	UNP Q04779
E	718	SER	-	expression tag	UNP Q04779
E	719	TRP	-	expression tag	UNP Q04779
E	720	SER	-	expression tag	UNP Q04779

Continued on next page...

Continued from previous page...

Chain	Residue	Modelled	Actual	Comment	Reference
E	721	HIS	-	expression tag	UNP Q04779
E	722	PRO	-	expression tag	UNP Q04779
E	723	GLN	-	expression tag	UNP Q04779
E	724	PHE	-	expression tag	UNP Q04779
E	725	GLU	-	expression tag	UNP Q04779
E	726	LYS	-	expression tag	UNP Q04779
E	727	GLU	-	expression tag	UNP Q04779
E	728	ASN	-	expression tag	UNP Q04779
E	729	LEU	-	expression tag	UNP Q04779
E	730	TYR	-	expression tag	UNP Q04779
E	731	PHE	-	expression tag	UNP Q04779
E	732	GLN	-	expression tag	UNP Q04779
E	733	SER	-	expression tag	UNP Q04779
G	685	MET	-	expression tag	UNP Q04779
G	686	HIS	-	expression tag	UNP Q04779
G	687	HIS	-	expression tag	UNP Q04779
G	688	HIS	-	expression tag	UNP Q04779
G	689	HIS	-	expression tag	UNP Q04779
G	690	HIS	-	expression tag	UNP Q04779
G	691	HIS	-	expression tag	UNP Q04779
G	692	HIS	-	expression tag	UNP Q04779
G	693	HIS	-	expression tag	UNP Q04779
G	694	PRO	-	expression tag	UNP Q04779
G	695	GLN	-	expression tag	UNP Q04779
G	696	LEU	-	expression tag	UNP Q04779
G	697	ALA	-	expression tag	UNP Q04779
G	698	MET	-	expression tag	UNP Q04779
G	699	TRP	-	expression tag	UNP Q04779
G	700	SER	-	expression tag	UNP Q04779
G	701	HIS	-	expression tag	UNP Q04779
G	702	PRO	-	expression tag	UNP Q04779
G	703	GLN	-	expression tag	UNP Q04779
G	704	PHE	-	expression tag	UNP Q04779
G	705	GLU	-	expression tag	UNP Q04779
G	706	LYS	-	expression tag	UNP Q04779
G	707	GLY	-	expression tag	UNP Q04779
G	708	GLY	-	expression tag	UNP Q04779
G	709	GLY	-	expression tag	UNP Q04779
G	710	SER	-	expression tag	UNP Q04779
G	711	GLY	-	expression tag	UNP Q04779
G	712	GLY	-	expression tag	UNP Q04779
G	713	GLY	-	expression tag	UNP Q04779

Continued on next page...

Continued from previous page...

Chain	Residue	Modelled	Actual	Comment	Reference
G	714	SER	-	expression tag	UNP Q04779
G	715	GLY	-	expression tag	UNP Q04779
G	716	GLY	-	expression tag	UNP Q04779
G	717	GLY	-	expression tag	UNP Q04779
G	718	SER	-	expression tag	UNP Q04779
G	719	TRP	-	expression tag	UNP Q04779
G	720	SER	-	expression tag	UNP Q04779
G	721	HIS	-	expression tag	UNP Q04779
G	722	PRO	-	expression tag	UNP Q04779
G	723	GLN	-	expression tag	UNP Q04779
G	724	PHE	-	expression tag	UNP Q04779
G	725	GLU	-	expression tag	UNP Q04779
G	726	LYS	-	expression tag	UNP Q04779
G	727	GLU	-	expression tag	UNP Q04779
G	728	ASN	-	expression tag	UNP Q04779
G	729	LEU	-	expression tag	UNP Q04779
G	730	TYR	-	expression tag	UNP Q04779
G	731	PHE	-	expression tag	UNP Q04779
G	732	GLN	-	expression tag	UNP Q04779
G	733	SER	-	expression tag	UNP Q04779

- Molecule 5 is a protein called Histone H3.

Mol	Chain	Residues	Atoms					AltConf	Trace
5	O	104	Total	C	N	O	S	0	0
			849	537	164	146	2		
5	S	98	Total	C	N	O	S	0	0
			811	515	155	139	2		

There are 2 discrepancies between the modelled and reference sequences:

Chain	Residue	Modelled	Actual	Comment	Reference
O	110	ALA	CYS	engineered mutation	UNP A0A310TTQ1
S	110	ALA	CYS	engineered mutation	UNP A0A310TTQ1

- Molecule 6 is a protein called Histone H4.

Mol	Chain	Residues	Atoms					AltConf	Trace
6	P	79	Total	C	N	O	S	0	0
			637	403	124	109	1		
6	T	79	Total	C	N	O	S	0	0
			637	403	124	109	1		

- Molecule 7 is a protein called Histone H2A.

Mol	Chain	Residues	Atoms				AltConf	Trace
7	Q	107	Total	C	N	O	0	0
			825	519	163	143		
7	U	107	Total	C	N	O	0	0
			825	519	163	143		

- Molecule 8 is a protein called Histone H2B 1.1.

Mol	Chain	Residues	Atoms					AltConf	Trace
8	R	92	Total	C	N	O	S	0	0
			721	454	129	136	2		
8	V	92	Total	C	N	O	S	0	0
			724	457	130	135	2		

There are 2 discrepancies between the modelled and reference sequences:

Chain	Residue	Modelled	Actual	Comment	Reference
R	29	THR	SER	engineered mutation	UNP P02281
V	29	THR	SER	engineered mutation	UNP P02281

- Molecule 9 is a DNA chain called 167bp DNA.

Mol	Chain	Residues	Atoms					AltConf	Trace
9	X	153	Total	C	N	O	P	0	0
			3154	1493	592	916	153		

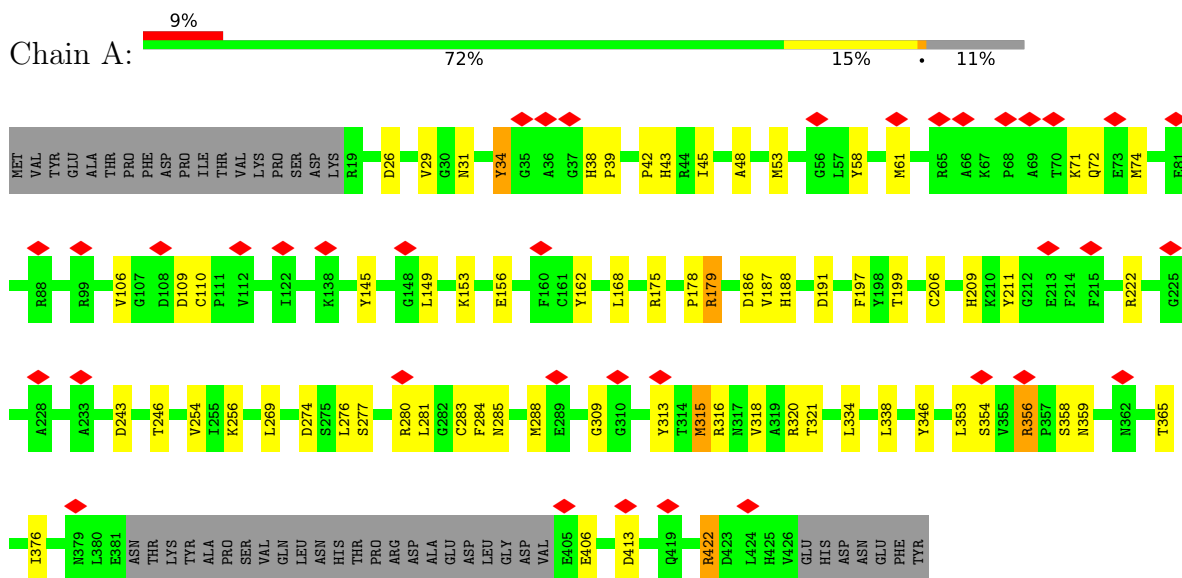
- Molecule 10 is a DNA chain called 167bp DNA.

Mol	Chain	Residues	Atoms					AltConf	Trace
10	Y	152	Total	C	N	O	P	0	0
			3100	1473	561	914	152		

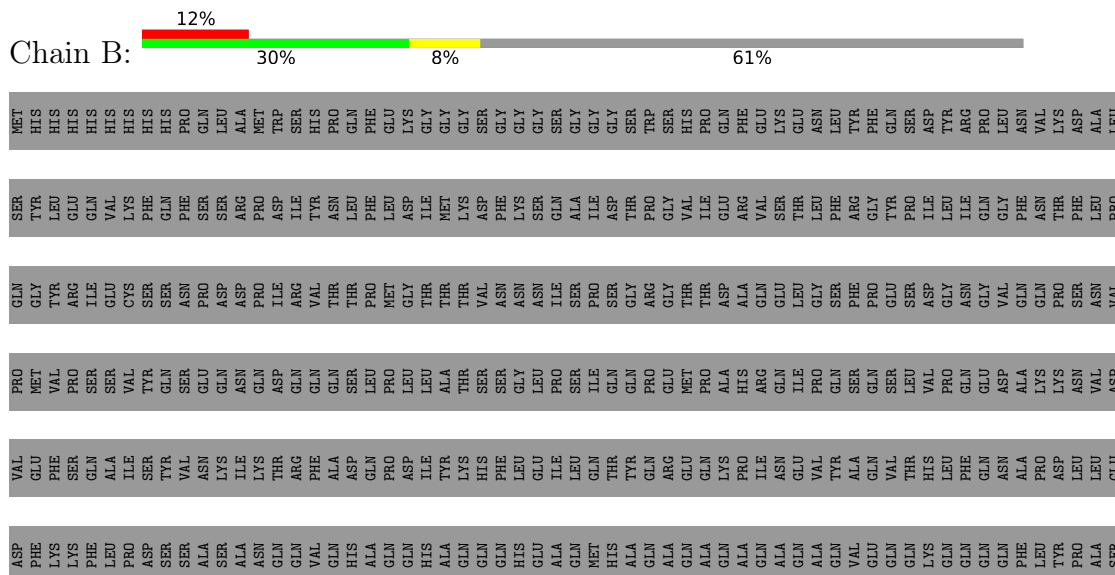
3 Residue-property plots

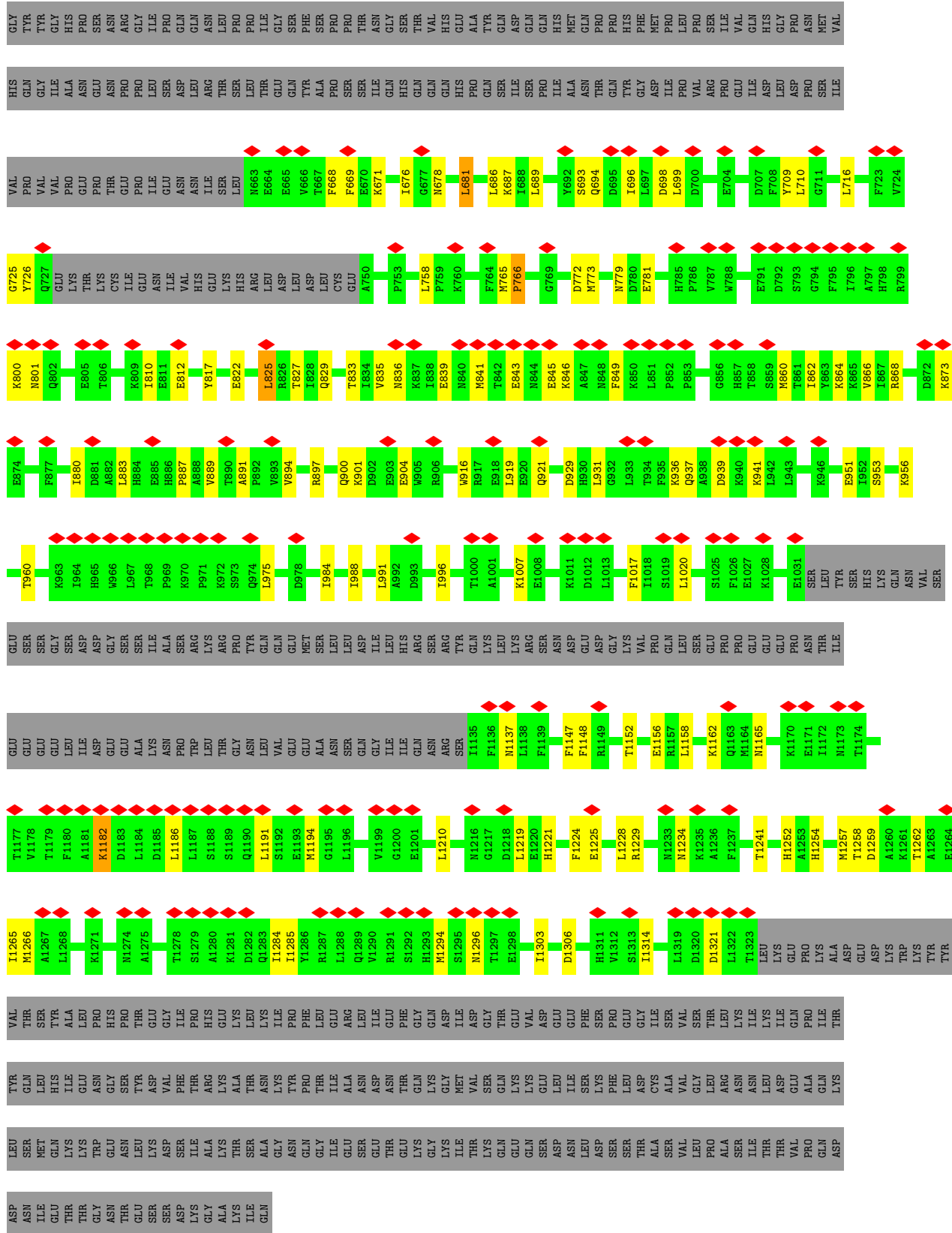
These plots are drawn for all protein, RNA, DNA and oligosaccharide chains in the entry. The first graphic for a chain summarises the proportions of the various outlier classes displayed in the second graphic. The second graphic shows the sequence view annotated by issues in geometry and atom inclusion in map density. Residues are color-coded according to the number of geometric quality criteria for which they contain at least one outlier: green = 0, yellow = 1, orange = 2 and red = 3 or more. A red diamond above a residue indicates a poor fit to the EM map for this residue (all-atom inclusion < 40%). Stretches of 2 or more consecutive residues without any outlier are shown as a green connector. Residues present in the sample, but not in the model, are shown in grey.

- Molecule 1: Histone deacetylase RPD3

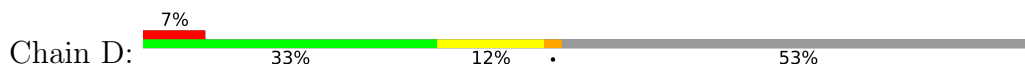


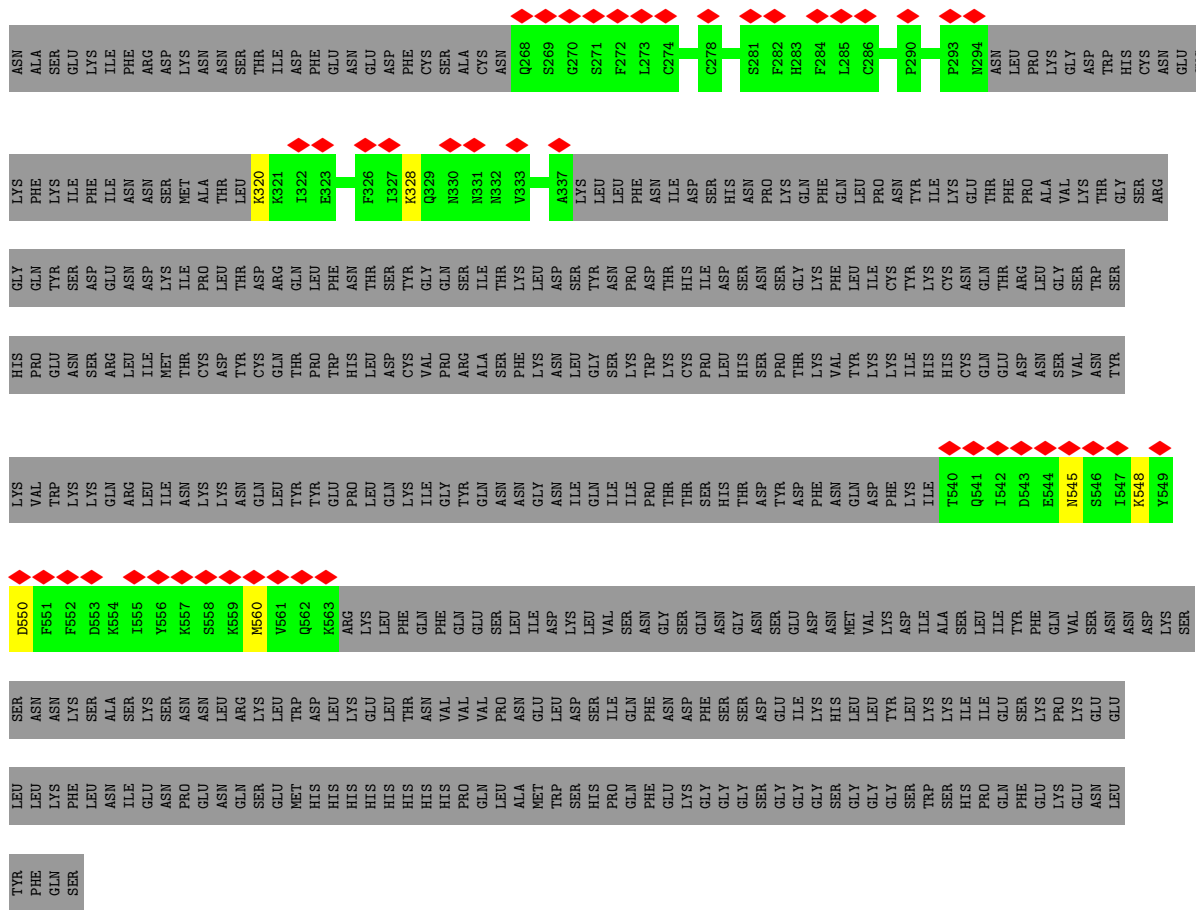
- Molecule 2: Transcriptional regulatory protein SIN3



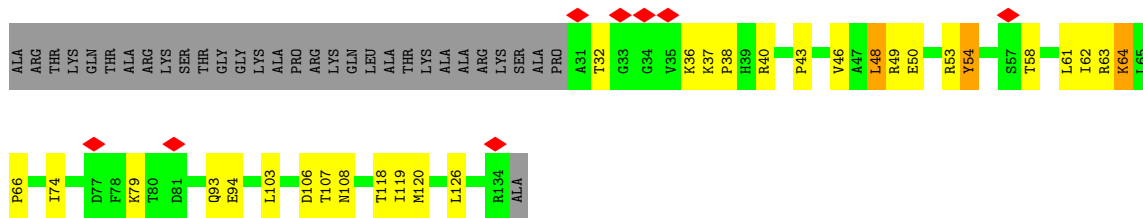


● Molecule 3: Chromatin modification-related protein EAF3

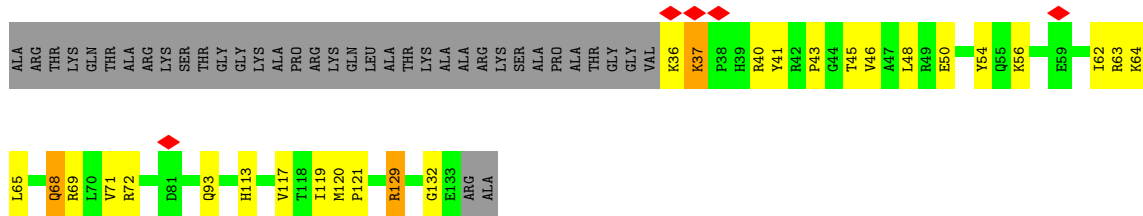




● Molecule 5: Histone H3



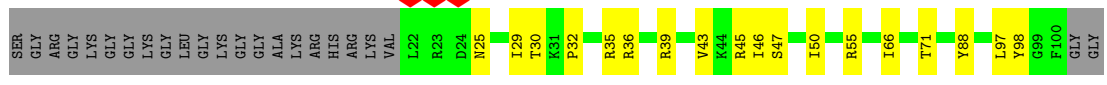
● Molecule 5: Histone H3



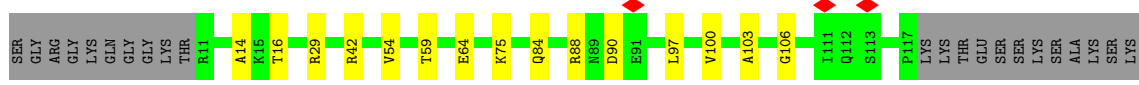
● Molecule 6: Histone H4



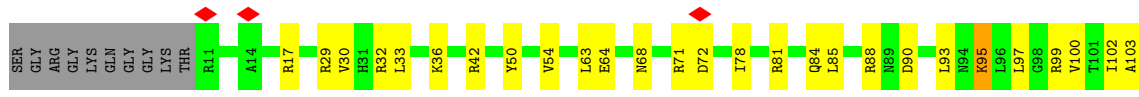
• Molecule 6: Histone H4



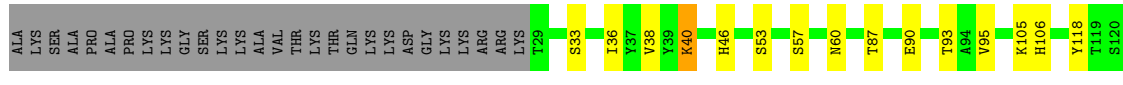
• Molecule 7: Histone H2A



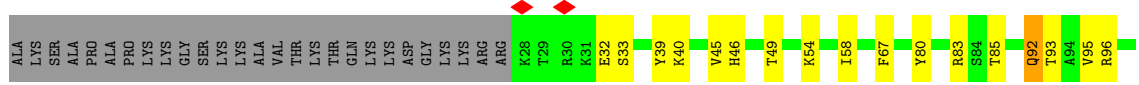
• Molecule 7: Histone H2A



• Molecule 8: Histone H2B 1.1

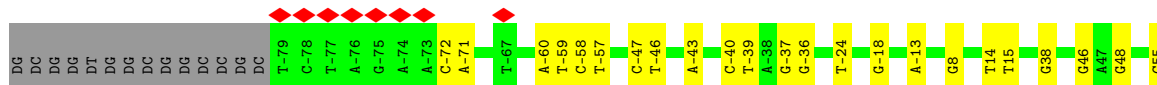
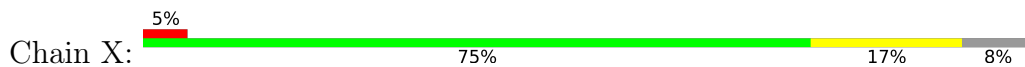


• Molecule 8: Histone H2B 1.1

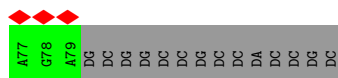
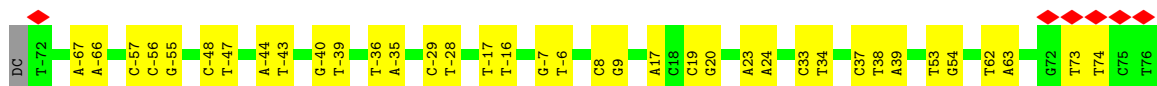




• Molecule 9: 167bp DNA



• Molecule 10: 167bp DNA



4 Experimental information

Property	Value	Source
EM reconstruction method	SINGLE PARTICLE	Depositor
Imposed symmetry	POINT, Not provided	
Number of particles used	56949	Depositor
Resolution determination method	FSC 0.143 CUT-OFF	Depositor
CTF correction method	PHASE FLIPPING AND AMPLITUDE CORRECTION	Depositor
Microscope	FEI TITAN KRIOS	Depositor
Voltage (kV)	300	Depositor
Electron dose ($e^-/\text{\AA}^2$)	50	Depositor
Minimum defocus (nm)	800	Depositor
Maximum defocus (nm)	2200	Depositor
Magnification	Not provided	
Image detector	FEI FALCON IV (4k x 4k)	Depositor
Maximum map value	0.507	Depositor
Minimum map value	-0.040	Depositor
Average map value	0.002	Depositor
Map value standard deviation	0.009	Depositor
Recommended contour level	0.05	Depositor
Map size (Å)	383.4, 383.4, 383.4	wwPDB
Map dimensions	540, 540, 540	wwPDB
Map angles (°)	90.0, 90.0, 90.0	wwPDB
Pixel spacing (Å)	0.71, 0.71, 0.71	Depositor

5 Model quality i

5.1 Standard geometry i

Bond lengths and bond angles in the following residue types are not validated in this section: M3L

The Z score for a bond length (or angle) is the number of standard deviations the observed value is removed from the expected value. A bond length (or angle) with $|Z| > 5$ is considered an outlier worth inspection. RMSZ is the root-mean-square of all Z scores of the bond lengths (or angles).

Mol	Chain	Bond lengths		Bond angles	
		RMSZ	# Z >5	RMSZ	# Z >5
1	A	0.28	0/3125	0.62	2/4222 (0.0%)
2	B	0.29	0/4600	0.64	9/6202 (0.1%)
3	D	0.28	0/1566	0.70	5/2119 (0.2%)
3	F	0.30	0/477	0.83	4/641 (0.6%)
4	E	0.29	0/2549	0.59	1/3426 (0.0%)
4	G	0.29	0/575	0.57	1/768 (0.1%)
5	O	0.28	0/849	0.65	1/1140 (0.1%)
5	S	0.30	0/812	0.57	0/1092
6	P	0.26	0/644	0.66	0/863
6	T	0.25	0/644	0.58	0/863
7	Q	0.24	0/835	0.52	0/1127
7	U	0.25	0/835	0.55	0/1127
8	R	0.25	0/732	0.52	0/986
8	V	0.25	0/735	0.51	0/989
9	X	0.56	0/3542	0.94	0/5469
10	Y	0.53	0/3473	0.94	0/5354
All	All	0.37	0/25993	0.73	23/36388 (0.1%)

Chiral center outliers are detected by calculating the chiral volume of a chiral center and verifying if the center is modelled as a planar moiety or with the opposite hand. A planarity outlier is detected by checking planarity of atoms in a peptide group, atoms in a mainchain group or atoms of a sidechain that are expected to be planar.

Mol	Chain	#Chirality outliers	#Planarity outliers
3	F	0	1

There are no bond length outliers.

All (23) bond angle outliers are listed below:

Mol	Chain	Res	Type	Atoms	Z	Observed(°)	Ideal(°)
2	B	766	PRO	CA-N-CD	-11.45	95.47	111.50
3	D	386	LEU	CA-CB-CG	10.16	138.67	115.30
2	B	772	ASP	CB-CG-OD1	9.09	126.48	118.30
1	A	109	ASP	CB-CG-OD1	8.57	126.01	118.30
3	F	331	LEU	CA-CB-CG	6.91	131.18	115.30
3	F	341	LEU	CA-CB-CG	6.75	130.83	115.30
2	B	1186	LEU	CA-CB-CG	6.74	130.80	115.30
3	D	363	LEU	CA-CB-CG	6.72	130.76	115.30
2	B	825	LEU	CA-CB-CG	6.45	130.13	115.30
3	D	338	LEU	CA-CB-CG	6.35	129.91	115.30
2	B	765	MET	CA-CB-CG	6.20	123.85	113.30
5	O	48	LEU	CA-CB-CG	5.95	128.98	115.30
3	F	296	MET	CB-CG-SD	5.94	130.22	112.40
4	G	550	ASP	CB-CG-OD1	5.88	123.59	118.30
2	B	1259	ASP	CB-CG-OD1	5.68	123.41	118.30
2	B	1266	MET	CB-CG-SD	5.58	129.14	112.40
1	A	269	LEU	CA-CB-CG	5.55	128.07	115.30
2	B	766	PRO	N-CD-CG	-5.51	94.93	103.20
2	B	1020	LEU	CA-CB-CG	5.27	127.43	115.30
3	D	341	LEU	CA-CB-CG	5.25	127.36	115.30
3	D	347	MET	CA-CB-CG	5.20	122.13	113.30
4	E	501	LYS	CA-CB-CG	5.11	124.63	113.40
3	F	357	LYS	CA-CB-CG	5.09	124.61	113.40

There are no chirality outliers.

All (1) planarity outliers are listed below:

Mol	Chain	Res	Type	Group
3	F	336	SER	Mainchain

5.2 Too-close contacts [\(i\)](#)

In the following table, the Non-H and H(model) columns list the number of non-hydrogen atoms and hydrogen atoms in the chain respectively. The H(added) column lists the number of hydrogen atoms added and optimized by MolProbity. The Clashes column lists the number of clashes within the asymmetric unit, whereas Symm-Clashes lists symmetry-related clashes.

Mol	Chain	Non-H	H(model)	H(added)	Clashes	Symm-Clashes
1	A	3050	0	2912	48	0
2	B	4498	0	4461	77	0
3	D	1535	0	1541	35	0
3	F	473	0	484	12	0

Continued on next page...

Continued from previous page...

Mol	Chain	Non-H	H(model)	H(added)	Clashes	Symm-Clashes
4	E	2491	0	2466	77	0
4	G	564	0	556	1	0
5	O	849	0	898	29	0
5	S	811	0	861	31	0
6	P	637	0	681	13	0
6	T	637	0	681	27	0
7	Q	825	0	882	15	0
7	U	825	0	882	28	0
8	R	721	0	742	9	0
8	V	724	0	750	16	0
9	X	3154	0	1717	21	0
10	Y	3100	0	1708	27	0
All	All	24894	0	22222	373	0

The all-atom clashscore is defined as the number of clashes found per 1000 atoms (including hydrogen atoms). The all-atom clashscore for this structure is 8.

All (373) close contacts within the same asymmetric unit are listed below, sorted by their clash magnitude.

Atom-1	Atom-2	Interatomic distance (Å)	Clash overlap (Å)
1:A:188:HIS:NE2	1:A:274:ASP:OD2	1.77	1.17
4:E:504:LEU:HD23	4:E:506:TYR:OH	1.67	0.94
4:E:519:ASN:O	4:E:539:ILE:HG13	1.68	0.92
4:E:519:ASN:OD1	4:E:539:ILE:HD12	1.68	0.92
1:A:188:HIS:CE1	1:A:274:ASP:OD2	2.25	0.90
6:T:88:TYR:HE2	8:V:80:TYR:CD1	1.97	0.82
5:S:120:MET:HA	6:T:50:ILE:HD11	1.62	0.82
5:S:120:MET:CA	6:T:50:ILE:HD11	2.11	0.80
4:E:436:LEU:HB3	4:E:449:LEU:HD22	1.64	0.80
5:O:50:GLU:O	5:O:54:TYR:HB2	1.83	0.79
2:B:1224:PHE:O	2:B:1228:LEU:HD13	1.84	0.78
1:A:188:HIS:CE1	1:A:313:TYR:CZ	2.71	0.78
5:S:69:ARG:HB3	6:T:25:ASN:HD21	1.50	0.77
3:D:289:PHE:CE2	3:D:331:LEU:HD23	2.21	0.75
5:S:40:ARG:O	10:Y:9:DG:H4'	1.87	0.74
1:A:188:HIS:HE1	1:A:313:TYR:CE2	2.05	0.74
4:E:504:LEU:HD23	4:E:506:TYR:CZ	2.23	0.73
7:Q:64:GLU:HA	8:R:46:HIS:CE1	2.23	0.73
2:B:1224:PHE:CE1	2:B:1228:LEU:HD11	2.24	0.72
4:E:436:LEU:HG	4:E:449:LEU:CD1	2.18	0.72
5:S:69:ARG:HB3	6:T:25:ASN:ND2	2.05	0.71

Continued on next page...

Continued from previous page...

Atom-1	Atom-2	Interatomic distance (Å)	Clash overlap (Å)
5:S:69:ARG:CB	6:T:25:ASN:HD21	2.03	0.70
1:A:188:HIS:CE1	1:A:313:TYR:OH	2.44	0.70
1:A:34:TYR:HB2	1:A:42:PRO:HD3	1.73	0.70
6:T:47:SER:OG	6:T:50:ILE:HG12	1.91	0.69
4:E:436:LEU:HG	4:E:449:LEU:HD11	1.73	0.69
5:O:37:LYS:HE2	5:O:40:ARG:HD3	1.75	0.69
7:Q:103:ALA:HB2	6:T:97:LEU:HD21	1.73	0.69
2:B:1224:PHE:CZ	2:B:1228:LEU:HD21	2.28	0.69
5:S:40:ARG:HH12	5:S:43:PRO:HG3	1.59	0.68
1:A:187:VAL:HG12	1:A:188:HIS:CD2	2.28	0.68
2:B:1224:PHE:CE2	2:B:1228:LEU:CD2	2.76	0.68
6:T:88:TYR:CE2	8:V:80:TYR:CD1	2.82	0.68
1:A:188:HIS:CE1	1:A:313:TYR:CE2	2.82	0.67
6:T:30:THR:HG22	6:T:32:PRO:HD2	1.77	0.66
1:A:365:THR:HG21	4:E:435:ARG:CD	2.25	0.66
2:B:996:ILE:HD13	2:B:1007:LYS:HB3	1.77	0.66
7:U:42:ARG:NH1	8:V:85:THR:OG1	2.30	0.65
3:F:289:PHE:CE1	3:F:334:LEU:HD22	2.32	0.65
5:S:41:TYR:HE2	10:Y:-67:DA:H4'	1.63	0.64
5:O:94:GLU:OE1	7:U:103:ALA:HB1	1.98	0.64
5:S:45:THR:HA	5:S:48:LEU:HD12	1.81	0.63
2:B:827:THR:HG21	2:B:866:VAL:HG21	1.80	0.63
4:E:372:TYR:OH	4:E:496:ARG:NH2	2.32	0.63
5:O:32:THR:HB	5:O:36:M3L:HE3	1.81	0.63
5:O:36:M3L:HG3	5:O:37:LYS:H	1.63	0.63
1:A:365:THR:HG21	4:E:435:ARG:HD2	1.81	0.62
2:B:1224:PHE:CE2	2:B:1228:LEU:HD21	2.34	0.62
6:T:25:ASN:OD1	6:T:25:ASN:O	2.17	0.62
3:D:224:ILE:HB	3:D:229:LYS:HE3	1.82	0.62
1:A:186:ASP:HB2	1:A:209:HIS:HA	1.83	0.61
1:A:315:MET:SD	1:A:315:MET:N	2.73	0.61
3:F:357:LYS:HA	3:F:360:GLU:HG3	1.82	0.61
1:A:53:MET:O	1:A:422:ARG:NH1	2.34	0.61
1:A:58:TYR:HA	1:A:61:MET:HB2	1.83	0.60
2:B:975:LEU:O	2:B:975:LEU:HG	2.01	0.60
2:B:931:LEU:HB2	4:E:398:LEU:HB3	1.82	0.60
3:D:289:PHE:CE2	3:D:331:LEU:CD2	2.84	0.60
6:T:29:ILE:O	6:T:55:ARG:NH1	2.35	0.60
2:B:1147:PHE:HB2	2:B:1252:HIS:HB3	1.84	0.60
4:E:321:LYS:HE3	4:E:323:GLU:HG2	1.84	0.59
4:E:542:ILE:HG21	4:E:547:ILE:HD11	1.84	0.59

Continued on next page...

Continued from previous page...

Atom-1	Atom-2	Interatomic distance (Å)	Clash overlap (Å)
3:F:278:LEU:HD12	3:F:279:SER:N	2.17	0.59
5:O:48:LEU:HD13	7:U:116:LEU:HD23	1.84	0.59
2:B:1224:PHE:CE2	2:B:1228:LEU:HD22	2.38	0.58
4:E:520:ILE:HB	4:E:542:ILE:CG1	2.33	0.58
2:B:1224:PHE:CZ	2:B:1228:LEU:HD11	2.38	0.58
5:O:106:ASP:OD1	5:S:129:ARG:NH2	2.36	0.58
1:A:211:TYR:HB3	4:E:455:ALA:HB3	1.86	0.58
4:E:303:CYS:N	4:E:306:CYS:SG	2.77	0.58
9:X:-37:DG:N2	10:Y:38:DT:O2	2.36	0.58
2:B:694:GLN:NE2	4:E:516:ASN:OD1	2.36	0.58
5:S:119:ILE:O	6:T:50:ILE:HD11	2.04	0.58
3:D:394:TYR:HA	3:D:397:VAL:HG12	1.86	0.58
3:F:289:PHE:CD1	3:F:334:LEU:HD22	2.39	0.58
1:A:188:HIS:CE1	1:A:313:TYR:HH	2.22	0.58
4:E:436:LEU:HD23	4:E:449:LEU:HD21	1.86	0.57
5:S:121:PRO:HD3	6:T:50:ILE:HD13	1.87	0.57
7:U:90:ASP:HB3	7:U:93:LEU:HB2	1.86	0.57
6:T:35:ARG:HD2	6:T:46:ILE:HD12	1.86	0.56
4:E:520:ILE:HB	4:E:542:ILE:HG13	1.85	0.56
4:E:436:LEU:HD23	4:E:449:LEU:CD2	2.36	0.56
2:B:843:GLU:HA	2:B:846:LYS:HG3	1.88	0.55
7:U:30:VAL:HG13	8:V:67:PHE:HE1	1.71	0.55
3:D:298:LEU:HD13	3:D:302:GLU:HB3	1.89	0.55
4:E:443:CYS:SG	4:E:445:THR:OG1	2.63	0.55
7:Q:88:ARG:NH2	7:Q:100:VAL:O	2.39	0.55
1:A:283:CYS:SG	2:B:800:LYS:NZ	2.80	0.55
2:B:1156:GLU:OE2	4:E:430:HIS:NE2	2.40	0.55
7:Q:84:GLN:NE2	7:Q:106:GLY:O	2.40	0.55
2:B:937:GLN:OE1	2:B:937:GLN:N	2.40	0.54
7:U:42:ARG:HG2	10:Y:39:DA:H5'	1.87	0.54
2:B:699:LEU:HD11	2:B:725:GLY:HA2	1.89	0.54
4:E:45:ASN:HB2	4:E:49:LYS:O	2.08	0.54
2:B:689:LEU:HD11	4:E:547:ILE:HG23	1.89	0.54
6:T:88:TYR:HE2	8:V:80:TYR:CE1	2.25	0.54
5:S:62:ILE:O	5:S:93:GLN:NE2	2.41	0.54
3:D:371:ASP:OD1	3:D:371:ASP:N	2.41	0.53
2:B:988:ILE:HD13	2:B:1158:LEU:HD11	1.91	0.53
6:T:97:LEU:HD23	6:T:98:TYR:O	2.08	0.53
1:A:199:THR:OG1	2:B:779:ASN:ND2	2.42	0.53
1:A:243:ASP:OD1	1:A:246:THR:OG1	2.27	0.53
4:E:542:ILE:CG2	4:E:547:ILE:HD11	2.39	0.53

Continued on next page...

Continued from previous page...

Atom-1	Atom-2	Interatomic distance (Å)	Clash overlap (Å)
7:U:88:ARG:NH2	7:U:100:VAL:O	2.41	0.53
1:A:359:ASN:ND2	2:B:929:ASP:OD1	2.42	0.53
2:B:686:LEU:HD23	2:B:689:LEU:HD21	1.90	0.53
6:P:71:THR:HG22	8:R:93:THR:HG23	1.90	0.53
3:D:308:GLU:HA	3:D:311:LYS:HB2	1.90	0.53
4:E:309:LYS:HA	4:E:313:ASN:HB3	1.90	0.53
4:E:436:LEU:C	4:E:449:LEU:HD13	2.29	0.53
2:B:696:ILE:HD11	4:E:490:LYS:HB3	1.91	0.52
4:E:292:ASP:OD1	4:E:292:ASP:N	2.39	0.52
2:B:1225:GLU:OE1	2:B:1229:ARG:NH2	2.41	0.52
4:E:44:VAL:HG12	4:E:45:ASN:ND2	2.25	0.52
4:E:46:TYR:CE1	4:E:51:ARG:HG3	2.45	0.52
3:D:260:LYS:O	3:D:264:GLU:HB3	2.09	0.52
4:E:330:ASN:HB3	4:E:333:VAL:HG23	1.90	0.52
6:P:98:TYR:HB3	8:V:58:ILE:HG23	1.91	0.52
1:A:26:ASP:HB3	1:A:29:VAL:HB	1.92	0.52
3:D:321:VAL:HG13	3:D:323:ILE:H	1.73	0.52
7:Q:54:VAL:HG21	8:R:95:VAL:HG21	1.90	0.52
1:A:106:VAL:HG13	1:A:162:TYR:HE1	1.75	0.52
7:U:54:VAL:HG21	8:V:95:VAL:HG21	1.91	0.52
2:B:901:LYS:NZ	2:B:904:GLU:OE1	2.43	0.51
7:Q:42:ARG:HB3	9:X:38:DG:H4'	1.91	0.51
3:D:260:LYS:O	3:D:264:GLU:CB	2.58	0.51
3:F:296:MET:HG2	3:F:333:ARG:HE	1.76	0.51
4:E:504:LEU:CD2	4:E:506:TYR:OH	2.51	0.51
3:F:354:LEU:HA	3:F:357:LYS:HE3	1.93	0.51
5:S:117:VAL:HG12	6:T:45:ARG:HB2	1.92	0.51
5:S:119:ILE:C	6:T:50:ILE:HD11	2.30	0.51
6:T:39:ARG:NH1	6:T:43:VAL:O	2.44	0.51
5:O:94:GLU:OE1	6:P:100:PHE:HE2	1.93	0.51
3:D:338:LEU:HD12	3:D:339:PRO:HD3	1.92	0.51
7:U:64:GLU:OE2	7:U:68:ASN:ND2	2.42	0.51
3:D:234:ASP:OD1	4:E:496:ARG:NH1	2.44	0.51
5:S:37:LYS:HD2	5:S:37:LYS:H	1.76	0.51
7:Q:14:ALA:HB3	9:X:46:DG:H5''	1.93	0.51
3:D:289:PHE:HE2	3:D:331:LEU:CD2	2.25	0.50
1:A:72:GLN:NE2	1:A:406:GLU:OE1	2.45	0.50
2:B:839:GLU:HA	2:B:846:LYS:HE2	1.93	0.50
4:E:436:LEU:O	4:E:449:LEU:HD13	2.11	0.50
5:O:63:ARG:HB2	5:O:66:PRO:HD2	1.94	0.50
2:B:1254:HIS:O	2:B:1258:THR:OG1	2.30	0.50

Continued on next page...

Continued from previous page...

Atom-1	Atom-2	Interatomic distance (Å)	Clash overlap (Å)
4:E:402:ASN:ND2	4:E:434:SER:OG	2.44	0.50
10:Y:-29:DC:H2'	10:Y:-28:DT:C6	2.46	0.50
8:R:36:ILE:HG21	9:X:48:DG:H3'	1.94	0.50
1:A:153:LYS:HB2	1:A:156:GLU:HG2	1.94	0.50
2:B:1284:ILE:HG13	2:B:1285:ILE:HD12	1.93	0.50
3:D:86:SER:OG	3:D:87:SER:N	2.43	0.50
3:D:270:GLU:O	3:D:275:GLN:NE2	2.45	0.50
4:E:303:CYS:SG	4:E:306:CYS:N	2.75	0.50
1:A:243:ASP:OD1	1:A:243:ASP:N	2.36	0.50
8:V:104:ALA:O	8:V:107:ALA:HB3	2.11	0.50
9:X:64:DG:H2'	9:X:65:DA:C8	2.47	0.50
3:D:241:LYS:HD3	4:E:372:TYR:HD2	1.76	0.49
7:Q:29:ARG:NH1	8:R:33:SER:O	2.45	0.49
3:D:390:THR:HG23	3:D:394:TYR:HB2	1.94	0.49
5:S:40:ARG:O	5:S:41:TYR:HB2	2.12	0.49
8:V:45:VAL:O	8:V:46:HIS:ND1	2.42	0.49
1:A:288:MET:HG2	1:A:354:SER:HA	1.95	0.49
2:B:709:TYR:O	4:E:418:TYR:HE1	1.95	0.49
2:B:1306:ASP:OD1	2:B:1306:ASP:N	2.45	0.49
4:E:415:LEU:HD12	4:E:446:PRO:HB3	1.94	0.49
9:X:-58:DC:H2''	9:X:-57:DT:C5	2.48	0.49
2:B:864:LYS:HG2	2:B:880:ILE:HG12	1.94	0.49
4:E:543:ASP:O	4:E:547:ILE:HG12	2.13	0.49
3:F:348:ASP:O	3:F:351:SER:OG	2.28	0.49
7:U:68:ASN:HA	7:U:71:ARG:HE	1.78	0.49
3:D:352:CYS:O	3:D:356:ILE:HD12	2.13	0.49
4:E:265:ALA:HB1	4:E:349:LYS:HA	1.95	0.49
4:E:367:GLY:HA3	4:E:371:GLN:HE21	1.78	0.49
9:X:63:DG:H2'	9:X:64:DG:C8	2.47	0.49
10:Y:33:DC:H2'	10:Y:34:DT:C6	2.47	0.49
6:P:44:LYS:HB2	7:U:115:LEU:HD22	1.95	0.49
5:O:103:LEU:O	5:O:107:THR:OG1	2.27	0.48
5:S:120:MET:CA	6:T:50:ILE:CD1	2.88	0.48
3:D:288:TYR:O	3:D:292:CYS:HB3	2.12	0.48
1:A:359:ASN:HD22	2:B:1234:ASN:HB3	1.77	0.48
4:E:327:ILE:HD11	4:E:338:LYS:HZ3	1.78	0.48
6:T:47:SER:OG	6:T:50:ILE:CG1	2.60	0.48
9:X:55:DC:H2''	9:X:56:DG:C8	2.48	0.48
5:S:120:MET:N	6:T:50:ILE:HD11	2.29	0.48
2:B:836:ASN:HA	2:B:839:GLU:HG2	1.96	0.48
3:D:296:MET:HB3	3:D:337:VAL:HG21	1.95	0.48

Continued on next page...

Continued from previous page...

Atom-1	Atom-2	Interatomic distance (Å)	Clash overlap (Å)
6:T:71:THR:HG22	8:V:93:THR:HG23	1.95	0.48
3:D:225:PRO:HB3	3:D:367:LEU:HD12	1.95	0.48
1:A:43:HIS:HB3	1:A:315:MET:HG2	1.96	0.47
5:O:94:GLU:OE1	6:P:100:PHE:CE2	2.68	0.47
7:U:32:ARG:HH22	8:V:32:GLU:HG3	1.79	0.47
7:U:33:LEU:HD23	7:U:36:LYS:HE3	1.94	0.47
8:V:46:HIS:HB3	8:V:49:THR:HB	1.96	0.47
10:Y:-67:DA:H2''	10:Y:-66:DA:C8	2.50	0.47
1:A:178:PRO:HB2	1:A:179:ARG:HD3	1.97	0.47
2:B:988:ILE:HD12	2:B:991:LEU:HD13	1.96	0.47
2:B:801:ASN:OD1	2:B:801:ASN:N	2.43	0.47
3:D:346:THR:OG1	4:E:321:LYS:NZ	2.39	0.47
5:O:37:LYS:HB2	5:O:38:PRO:HD2	1.97	0.47
6:P:39:ARG:NH1	6:P:43:VAL:O	2.47	0.47
2:B:687:LYS:HA	4:E:520:ILE:HD11	1.97	0.47
5:O:46:VAL:HA	5:O:49:ARG:HB3	1.96	0.47
2:B:835:VAL:O	2:B:839:GLU:HB3	2.15	0.46
1:A:281:LEU:HB2	1:A:313:TYR:HE2	1.80	0.46
1:A:359:ASN:HD21	2:B:929:ASP:HA	1.79	0.46
5:S:69:ARG:NH2	10:Y:17:DA:OP1	2.49	0.46
5:O:74:ILE:HD11	6:P:66:ILE:HD12	1.97	0.46
9:X:-72:DC:H2''	9:X:-71:DA:C8	2.50	0.46
2:B:709:TYR:O	4:E:418:TYR:CE1	2.68	0.46
9:X:-36:DG:N2	10:Y:37:DC:O2	2.49	0.46
4:E:46:TYR:CD1	4:E:49:LYS:HD3	2.51	0.46
5:O:119:ILE:O	6:P:47:SER:OG	2.29	0.46
5:O:64:LYS:HG3	5:O:93:GLN:OE1	2.16	0.46
10:Y:-36:DT:H2''	10:Y:-35:DA:C8	2.50	0.46
1:A:318:VAL:HA	1:A:321:THR:HG22	1.97	0.46
5:O:62:ILE:O	5:O:93:GLN:NE2	2.48	0.46
2:B:919:LEU:HD13	4:E:33:LYS:HD3	1.98	0.46
4:E:436:LEU:CB	4:E:449:LEU:HD22	2.41	0.46
3:D:345:THR:OG1	3:D:346:THR:N	2.49	0.45
4:E:520:ILE:HB	4:E:542:ILE:HG12	1.98	0.45
4:E:454:ARG:HH12	4:E:458:LYS:HE2	1.80	0.45
2:B:921:GLN:HB3	2:B:1191:LEU:HD11	1.99	0.45
4:E:443:CYS:SG	4:E:469:HIS:NE2	2.85	0.45
3:D:235:ASP:OD1	3:D:387:TYR:OH	2.34	0.45
5:O:36:M3L:HE2	5:O:37:LYS:O	2.17	0.45
9:X:62:DG:H2'	9:X:63:DG:C8	2.51	0.45
3:D:225:PRO:HD3	3:D:363:LEU:HB3	1.98	0.45

Continued on next page...

Continued from previous page...

Atom-1	Atom-2	Interatomic distance (Å)	Clash overlap (Å)
1:A:320:ARG:HG2	1:A:338:LEU:HD21	1.99	0.45
2:B:829:GLN:O	2:B:833:THR:OG1	2.30	0.45
7:U:97:LEU:HD22	7:U:100:VAL:HG21	1.99	0.45
9:X:-60:DA:H2''	9:X:-59:DT:H5'	1.99	0.45
10:Y:23:DA:H2''	10:Y:24:DA:C8	2.51	0.45
1:A:254:VAL:HG12	1:A:376:ILE:HG21	1.98	0.45
2:B:676:ILE:HG12	4:E:418:TYR:OH	2.16	0.45
2:B:1148:PHE:O	2:B:1152:THR:HG23	2.17	0.45
4:E:288:ASP:OD1	4:E:289:PRO:HD3	2.17	0.45
4:E:323:GLU:N	4:E:323:GLU:OE2	2.50	0.45
10:Y:53:DT:H2''	10:Y:54:DG:N7	2.31	0.45
4:E:440:CYS:HB3	4:E:445:THR:H	1.82	0.44
3:F:279:SER:O	3:F:282:CYS:HB3	2.16	0.44
1:A:39:PRO:HB3	1:A:280:ARG:HD2	1.99	0.44
5:O:118:THR:HG22	6:P:45:ARG:HE	1.81	0.44
7:U:63:LEU:HD22	7:U:78:ILE:HD13	1.98	0.44
10:Y:8:DC:H2''	10:Y:9:DG:C8	2.52	0.44
1:A:145:TYR:HA	1:A:309:GLY:HA3	1.99	0.44
2:B:849:PHE:HB3	2:B:887:PRO:HG2	1.98	0.44
10:Y:-40:DG:H2'	10:Y:-39:DT:C6	2.53	0.44
6:P:97:LEU:HD11	7:U:103:ALA:HB2	1.99	0.44
5:S:40:ARG:HH12	5:S:43:PRO:CG	2.29	0.44
4:E:46:TYR:HD1	4:E:49:LYS:HB3	1.83	0.44
5:O:32:THR:HB	5:O:36:M3L:HM33	1.99	0.44
7:Q:29:ARG:HE	7:Q:29:ARG:HB2	1.68	0.44
9:X:14:DT:H1'	9:X:15:DT:H5'	1.99	0.44
1:A:276:LEU:HD21	1:A:321:THR:HG21	1.98	0.44
2:B:1321:ASP:OD1	2:B:1321:ASP:N	2.49	0.44
4:E:275:CYS:SG	4:E:276:ASP:N	2.91	0.44
4:E:436:LEU:CD2	4:E:449:LEU:HD21	2.46	0.44
5:S:132:GLY:HA3	7:U:99:ARG:HH22	1.83	0.44
2:B:1296:ASN:OD1	2:B:1296:ASN:N	2.41	0.44
2:B:1303:ILE:HG12	2:B:1314:ILE:HG12	2.00	0.44
3:D:245:ILE:HD11	3:D:301:LEU:HG	1.99	0.44
2:B:953:SER:HA	2:B:956:LYS:HB3	1.99	0.44
7:Q:16:THR:HA	10:Y:-43:DT:H5''	1.99	0.44
5:S:63:ARG:HD3	10:Y:17:DA:H4'	2.00	0.44
9:X:-47:DC:H2''	9:X:-46:DT:C5	2.53	0.44
1:A:356:ARG:H	1:A:356:ARG:HD2	1.83	0.44
10:Y:-57:DC:H2''	10:Y:-56:DC:C5	2.53	0.44
1:A:31:ASN:HB3	2:B:862:ILE:HD12	2.00	0.43

Continued on next page...

Continued from previous page...

Atom-1	Atom-2	Interatomic distance (Å)	Clash overlap (Å)
1:A:285:ASN:ND2	1:A:358:SER:O	2.40	0.43
3:D:227:LYS:HG2	4:E:537:PHE:HD2	1.82	0.43
3:F:337:VAL:HG22	3:F:341:LEU:HD23	2.00	0.43
5:S:37:LYS:H	5:S:37:LYS:CD	2.30	0.43
5:O:61:LEU:HD11	6:P:40:ARG:HD2	2.00	0.43
5:O:126:LEU:HD22	5:S:113:HIS:CG	2.53	0.43
7:Q:88:ARG:HA	7:Q:88:ARG:HD3	1.87	0.43
7:U:17:ARG:HG3	9:X:-43:DA:H5"	1.99	0.43
5:O:108:ASN:ND2	6:P:42:GLY:O	2.51	0.43
2:B:1137:ASN:HA	2:B:1303:ILE:O	2.19	0.43
4:E:498:ILE:HD12	4:E:498:ILE:HA	1.83	0.43
2:B:693:SER:HB2	4:E:551:PHE:CE1	2.53	0.43
4:G:545:ASN:HA	4:G:548:LYS:HG2	2.00	0.43
5:O:48:LEU:CD1	7:U:116:LEU:HD23	2.47	0.43
2:B:984:ILE:HG22	2:B:984:ILE:O	2.18	0.43
10:Y:-17:DT:H2"	10:Y:-16:DT:C5	2.54	0.43
1:A:106:VAL:HA	1:A:110:CYS:HB2	2.01	0.43
2:B:689:LEU:HD11	4:E:547:ILE:CG2	2.48	0.43
2:B:779:ASN:OD1	2:B:779:ASN:N	2.51	0.43
5:O:58:THR:HG21	7:U:81:ARG:HB2	2.01	0.43
5:S:36:M3L:HM22	5:S:36:M3L:HD3	1.76	0.43
1:A:334:LEU:HD22	1:A:353:LEU:HD22	1.99	0.43
10:Y:-56:DC:H2"	10:Y:-55:DG:C8	2.53	0.43
3:D:260:LYS:NZ	3:D:264:GLU:OE1	2.48	0.43
3:D:359:THR:O	3:D:363:LEU:HD22	2.19	0.43
2:B:822:GLU:HA	2:B:825:LEU:HG	2.00	0.42
2:B:1162:LYS:HA	2:B:1165:ASN:HB2	2.00	0.42
5:O:36:M3L:CG	5:O:37:LYS:H	2.29	0.42
7:U:95:LYS:HA	7:U:95:LYS:HD2	1.82	0.42
9:X:-18:DG:N2	10:Y:19:DC:O2	2.52	0.42
2:B:1219:LEU:HD21	2:B:1224:PHE:HB2	2.01	0.42
4:E:46:TYR:HB3	4:E:47:ASP:H	1.67	0.42
5:O:61:LEU:HD12	6:P:37:LEU:HD23	2.01	0.42
7:U:84:GLN:NE2	7:U:106:GLY:O	2.53	0.42
2:B:758:LEU:HB2	2:B:781:GLU:HA	2.02	0.42
2:B:868:ARG:NH1	2:B:873:LYS:O	2.50	0.42
2:B:1262:THR:HA	2:B:1265:ILE:HG12	2.02	0.42
7:U:88:ARG:HB2	7:U:108:LEU:HD21	2.01	0.42
1:A:222:ARG:HD3	1:A:222:ARG:HA	1.83	0.42
7:Q:90:ASP:OD1	7:Q:90:ASP:N	2.47	0.42
8:R:87:THR:OG1	8:R:90:GLU:OE1	2.35	0.42

Continued on next page...

Continued from previous page...

Atom-1	Atom-2	Interatomic distance (Å)	Clash overlap (Å)
4:E:495:GLN:NE2	4:E:537:PHE:HA	2.35	0.42
5:S:120:MET:C	6:T:50:ILE:CD1	2.87	0.42
9:X:-40:DC:H2'	9:X:-39:DT:H71	2.02	0.42
1:A:149:LEU:HD23	1:A:162:TYR:H	1.84	0.42
2:B:1182:LYS:H	2:B:1182:LYS:HG3	1.63	0.42
2:B:951:GLU:HA	4:E:425:LEU:HD23	2.01	0.42
4:E:287:LEU:HB3	4:E:289:PRO:HD2	2.02	0.42
2:B:710:LEU:HB3	2:B:716:LEU:HD11	2.02	0.42
4:E:331:ASN:OD1	4:E:331:ASN:N	2.48	0.42
8:R:36:ILE:O	8:R:40:LYS:HG3	2.19	0.42
7:U:102:ILE:HG23	8:V:58:ILE:HD13	2.01	0.42
10:Y:-48:DC:H2''	10:Y:-47:DT:C5	2.55	0.42
10:Y:19:DC:H2''	10:Y:20:DG:H8	1.84	0.42
10:Y:62:DT:H2''	10:Y:63:DA:C8	2.55	0.42
2:B:889:VAL:O	4:E:61:ARG:NH2	2.48	0.41
3:F:289:PHE:CE1	3:F:334:LEU:CD2	3.03	0.41
6:T:36:ARG:HH12	9:X:-13:DA:P	2.43	0.41
4:E:494:LYS:HE2	4:E:494:LYS:HB2	1.83	0.41
5:S:46:VAL:O	5:S:50:GLU:HG3	2.19	0.41
2:B:956:LYS:NZ	2:B:960:THR:OG1	2.53	0.41
2:B:1210:LEU:HD12	2:B:1210:LEU:HA	1.92	0.41
3:D:229:LYS:HB3	4:E:361:PHE:HE1	1.85	0.41
3:D:311:LYS:HD2	3:D:311:LYS:HA	1.88	0.41
10:Y:-7:DG:H2''	10:Y:-6:DT:C5	2.55	0.41
2:B:678:ASN:HD22	2:B:681:LEU:HD23	1.86	0.41
7:U:72:ASP:OD1	7:U:72:ASP:N	2.38	0.41
2:B:880:ILE:HA	2:B:883:LEU:HD12	2.02	0.41
4:E:495:GLN:HE21	4:E:537:PHE:HA	1.86	0.41
4:E:512:ILE:HG22	4:E:550:ASP:HB3	2.02	0.41
5:O:43:PRO:HB3	9:X:8:DG:H4'	2.02	0.41
7:Q:75:LYS:HE2	7:Q:75:LYS:HB3	1.93	0.41
7:U:85:LEU:HD23	7:U:108:LEU:HD22	2.02	0.41
8:V:92:GLN:NE2	8:V:96:ARG:HH21	2.17	0.41
7:Q:59:THR:HG21	8:R:38:VAL:HG22	2.03	0.41
2:B:698:ASP:OD1	2:B:698:ASP:N	2.51	0.41
2:B:766:PRO:O	2:B:766:PRO:HD2	2.20	0.41
2:B:939:ASP:OD2	2:B:1241:THR:OG1	2.36	0.41
5:S:68:GLN:O	5:S:72:ARG:HG2	2.21	0.41
1:A:188:HIS:NE2	1:A:313:TYR:CZ	2.88	0.41
2:B:693:SER:HB2	4:E:551:PHE:HE1	1.84	0.41
2:B:891:ALA:HA	2:B:894:VAL:HG12	2.02	0.41

Continued on next page...

Continued from previous page...

Atom-1	Atom-2	Interatomic distance (Å)	Clash overlap (Å)
3:D:228:LEU:HD12	3:D:332:LEU:HD21	2.02	0.41
5:O:36:M3L:HG3	5:O:37:LYS:N	2.34	0.41
7:Q:88:ARG:NH1	7:Q:97:LEU:O	2.54	0.41
5:S:71:VAL:HG22	6:T:66:ILE:HD11	2.02	0.41
9:X:-24:DT:H6	9:X:-24:DT:H2'	1.67	0.41
10:Y:73:DT:H2'	10:Y:74:DT:H71	2.01	0.41
2:B:810:ILE:HB	2:B:916:TRP:HE1	1.86	0.41
3:D:255:GLU:N	3:D:255:GLU:OE1	2.54	0.40
10:Y:-44:DA:H2'	10:Y:-43:DT:H71	2.03	0.40
1:A:45:ILE:O	1:A:48:ALA:HB3	2.22	0.40
1:A:256:LYS:HE3	1:A:256:LYS:HB3	1.94	0.40
1:A:413:ASP:N	1:A:413:ASP:OD1	2.54	0.40
2:B:668:PHE:HA	2:B:671:LYS:HE3	2.04	0.40
8:R:105:LYS:HZ1	8:R:106:HIS:CE1	2.38	0.40
5:S:65:LEU:HD12	10:Y:17:DA:H2'	2.02	0.40
7:U:29:ARG:NH1	8:V:33:SER:O	2.55	0.40
3:D:394:TYR:O	3:D:398:ALA:CB	2.69	0.40
4:E:545:ASN:HA	4:E:548:LYS:HD2	2.02	0.40
3:F:281:TYR:O	3:F:285:LEU:HD12	2.22	0.40
3:D:342:ILE:HG22	4:E:339:LEU:HD21	2.03	0.40
9:X:64:DG:H2'	9:X:65:DA:H8	1.85	0.40
3:F:347:MET:HG2	3:F:351:SER:OG	2.22	0.40
7:U:29:ARG:HE	7:U:29:ARG:HB2	1.74	0.40
8:V:54:LYS:O	8:V:58:ILE:HG13	2.21	0.40

There are no symmetry-related clashes.

5.3 Torsion angles [i](#)

5.3.1 Protein backbone [i](#)

In the following table, the Percentiles column shows the percent Ramachandran outliers of the chain as a percentile score with respect to all PDB entries followed by that with respect to all EM entries.

The Analysed column shows the number of residues for which the backbone conformation was analysed, and the total number of residues.

Mol	Chain	Analysed	Favoured	Allowed	Outliers	Percentiles
1	A	381/433 (88%)	359 (94%)	22 (6%)	0	100 100

Continued on next page...

Continued from previous page...

Mol	Chain	Analysed	Favoured	Allowed	Outliers	Percentiles	
2	B	530/1371 (39%)	510 (96%)	20 (4%)	0	100	100
3	D	184/401 (46%)	175 (95%)	9 (5%)	0	100	100
3	F	57/401 (14%)	54 (95%)	3 (5%)	0	100	100
4	E	290/733 (40%)	261 (90%)	29 (10%)	0	100	100
4	G	63/733 (9%)	56 (89%)	7 (11%)	0	100	100
5	O	101/135 (75%)	93 (92%)	8 (8%)	0	100	100
5	S	96/135 (71%)	91 (95%)	5 (5%)	0	100	100
6	P	77/102 (76%)	76 (99%)	1 (1%)	0	100	100
6	T	77/102 (76%)	77 (100%)	0	0	100	100
7	Q	105/129 (81%)	103 (98%)	2 (2%)	0	100	100
7	U	105/129 (81%)	103 (98%)	2 (2%)	0	100	100
8	R	90/122 (74%)	89 (99%)	1 (1%)	0	100	100
8	V	90/122 (74%)	87 (97%)	3 (3%)	0	100	100
All	All	2246/5048 (44%)	2134 (95%)	112 (5%)	0	100	100

There are no Ramachandran outliers to report.

5.3.2 Protein sidechains [i](#)

In the following table, the Percentiles column shows the percent sidechain outliers of the chain as a percentile score with respect to all PDB entries followed by that with respect to all EM entries.

The Analysed column shows the number of residues for which the sidechain conformation was analysed, and the total number of residues.

Mol	Chain	Analysed	Rotameric	Outliers	Percentiles	
1	A	323/367 (88%)	306 (95%)	17 (5%)	22	54
2	B	498/1247 (40%)	479 (96%)	19 (4%)	33	66
3	D	176/359 (49%)	164 (93%)	12 (7%)	16	45
3	F	57/359 (16%)	52 (91%)	5 (9%)	10	36
4	E	287/692 (42%)	272 (95%)	15 (5%)	23	55
4	G	67/692 (10%)	64 (96%)	3 (4%)	27	60
5	O	87/108 (81%)	82 (94%)	5 (6%)	20	52
5	S	84/108 (78%)	78 (93%)	6 (7%)	14	44

Continued on next page...

Continued from previous page...

Mol	Chain	Analysed	Rotameric	Outliers	Percentiles	
6	P	66/78 (85%)	62 (94%)	4 (6%)	18	49
6	T	66/78 (85%)	66 (100%)	0	100	100
7	Q	84/101 (83%)	84 (100%)	0	100	100
7	U	84/101 (83%)	82 (98%)	2 (2%)	49	76
8	R	79/102 (78%)	74 (94%)	5 (6%)	18	48
8	V	79/102 (78%)	75 (95%)	4 (5%)	24	56
All	All	2037/4494 (45%)	1940 (95%)	97 (5%)	29	58

All (97) residues with a non-rotameric sidechain are listed below:

Mol	Chain	Res	Type
1	A	34	TYR
1	A	38	HIS
1	A	71	LYS
1	A	74	MET
1	A	168	LEU
1	A	175	ARG
1	A	179	ARG
1	A	191	ASP
1	A	197	PHE
1	A	206	CYS
1	A	277	SER
1	A	284	PHE
1	A	315	MET
1	A	316	ARG
1	A	346	TYR
1	A	356	ARG
1	A	422	ARG
2	B	669	PHE
2	B	681	LEU
2	B	726	TYR
2	B	773	MET
2	B	812	GLU
2	B	817	TYR
2	B	841	MET
2	B	845	GLU
2	B	860	MET
2	B	897	ARG
2	B	900	GLN
2	B	936	LYS

Continued on next page...

Continued from previous page...

Mol	Chain	Res	Type
2	B	941	LYS
2	B	1017	PHE
2	B	1182	LYS
2	B	1194	MET
2	B	1221	HIS
2	B	1257	MET
2	B	1294	MET
3	D	88	TRP
3	D	227	LYS
3	D	256	MET
3	D	263	HIS
3	D	278	LEU
3	D	289	PHE
3	D	292	CYS
3	D	341	LEU
3	D	357	LYS
3	D	373	TYR
3	D	376	ASP
3	D	387	TYR
4	E	56	SER
4	E	268	GLN
4	E	284	PHE
4	E	288	ASP
4	E	309	LYS
4	E	368	SER
4	E	369	ARG
4	E	418	TYR
4	E	430	HIS
4	E	438	MET
4	E	454	ARG
4	E	476	LYS
4	E	493	LYS
4	E	537	PHE
4	E	560	MET
3	F	281	TYR
3	F	296	MET
3	F	350	GLN
3	F	353	GLN
3	F	357	LYS
4	G	320	LYS
4	G	328	LYS
4	G	560	MET

Continued on next page...

Continued from previous page...

Mol	Chain	Res	Type
5	O	53	ARG
5	O	54	TYR
5	O	64	LYS
5	O	79	LYS
5	O	120	MET
6	P	45	ARG
6	P	53	GLU
6	P	79	LYS
6	P	84	MET
8	R	40	LYS
8	R	53	SER
8	R	57	SER
8	R	60	ASN
8	R	118	TYR
5	S	37	LYS
5	S	54	TYR
5	S	56	LYS
5	S	64	LYS
5	S	68	GLN
5	S	129	ARG
7	U	50	TYR
7	U	95	LYS
8	V	39	TYR
8	V	40	LYS
8	V	83	ARG
8	V	92	GLN

Sometimes sidechains can be flipped to improve hydrogen bonding and reduce clashes. All (7) such sidechains are listed below:

Mol	Chain	Res	Type
1	A	188	HIS
1	A	359	ASN
2	B	779	ASN
4	E	65	ASN
8	R	46	HIS
8	R	106	HIS
6	T	25	ASN

5.3.3 RNA

There are no RNA molecules in this entry.

5.4 Non-standard residues in protein, DNA, RNA chains [i](#)

2 non-standard protein/DNA/RNA residues are modelled in this entry.

In the following table, the Counts columns list the number of bonds (or angles) for which Mogul statistics could be retrieved, the number of bonds (or angles) that are observed in the model and the number of bonds (or angles) that are defined in the Chemical Component Dictionary. The Link column lists molecule types, if any, to which the group is linked. The Z score for a bond length (or angle) is the number of standard deviations the observed value is removed from the expected value. A bond length (or angle) with $|Z| > 2$ is considered an outlier worth inspection. RMSZ is the root-mean-square of all Z scores of the bond lengths (or angles).

Mol	Type	Chain	Res	Link	Bond lengths			Bond angles		
					Counts	RMSZ	# Z > 2	Counts	RMSZ	# Z > 2
5	M3L	O	36	5	10,11,12	0.87	0	9,14,16	0.65	0
5	M3L	S	36	5	10,11,12	0.84	0	9,14,16	0.60	0

In the following table, the Chirals column lists the number of chiral outliers, the number of chiral centers analysed, the number of these observed in the model and the number defined in the Chemical Component Dictionary. Similar counts are reported in the Torsion and Rings columns. '-' means no outliers of that kind were identified.

Mol	Type	Chain	Res	Link	Chirals	Torsions	Rings
5	M3L	O	36	5	-	0/9/10/12	-
5	M3L	S	36	5	-	0/9/10/12	-

There are no bond length outliers.

There are no bond angle outliers.

There are no chirality outliers.

There are no torsion outliers.

There are no ring outliers.

2 monomers are involved in 7 short contacts:

Mol	Chain	Res	Type	Clashes	Symm-Clashes
5	O	36	M3L	6	0
5	S	36	M3L	1	0

5.5 Carbohydrates [i](#)

There are no monosaccharides in this entry.

5.6 Ligand geometry [i](#)

There are no ligands in this entry.

5.7 Other polymers [i](#)

There are no such residues in this entry.

5.8 Polymer linkage issues [i](#)

There are no chain breaks in this entry.

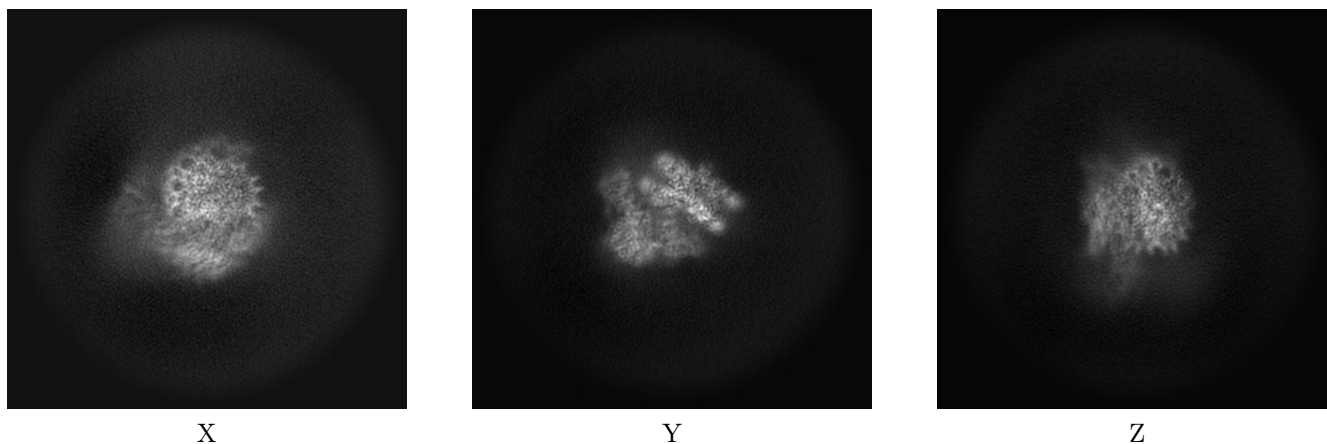
6 Map visualisation [i](#)

This section contains visualisations of the EMDB entry EMD-37127. These allow visual inspection of the internal detail of the map and identification of artifacts.

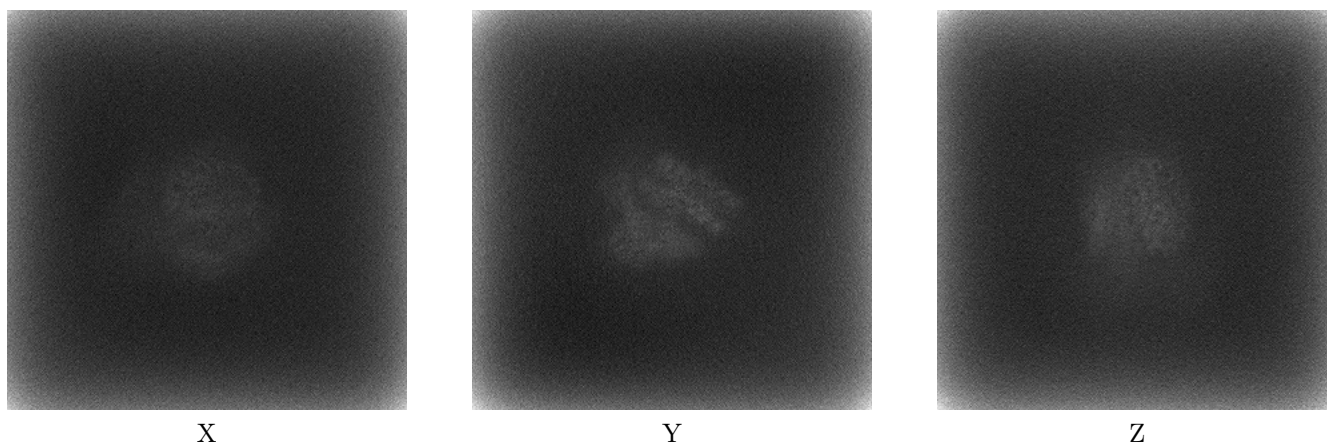
Images derived from a raw map, generated by summing the deposited half-maps, are presented below the corresponding image components of the primary map to allow further visual inspection and comparison with those of the primary map.

6.1 Orthogonal projections [i](#)

6.1.1 Primary map



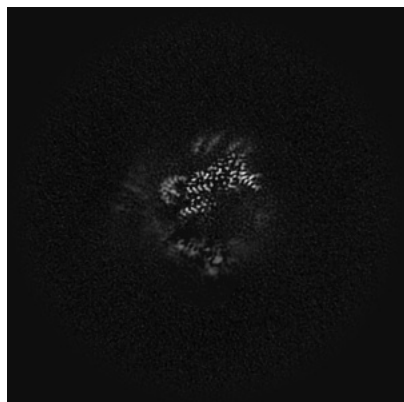
6.1.2 Raw map



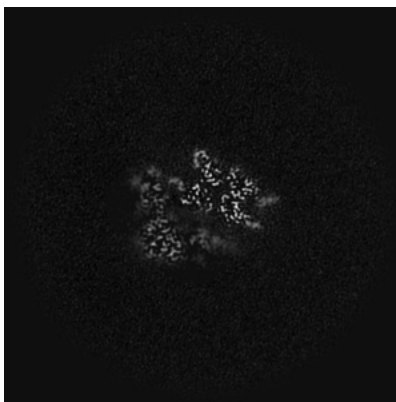
The images above show the map projected in three orthogonal directions.

6.2 Central slices [i](#)

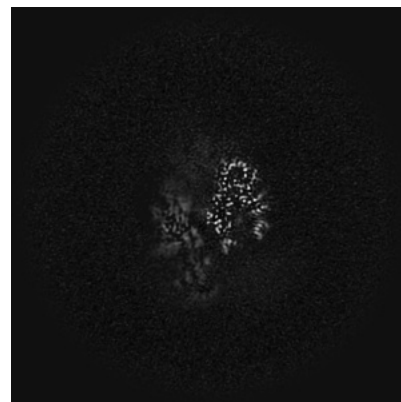
6.2.1 Primary map



X Index: 270



Y Index: 270

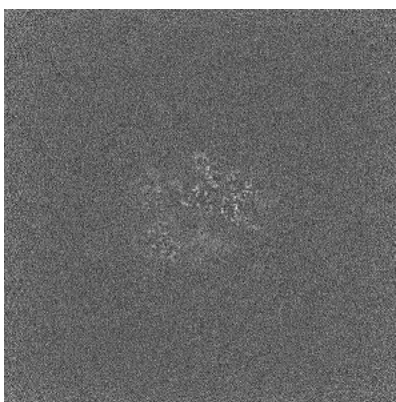


Z Index: 270

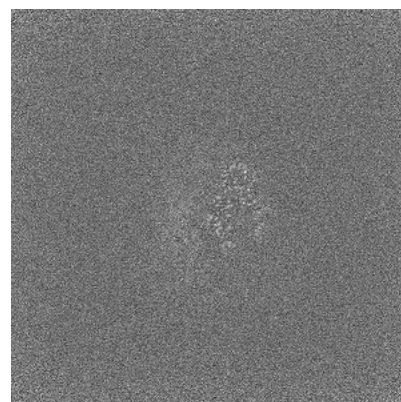
6.2.2 Raw map



X Index: 270



Y Index: 270

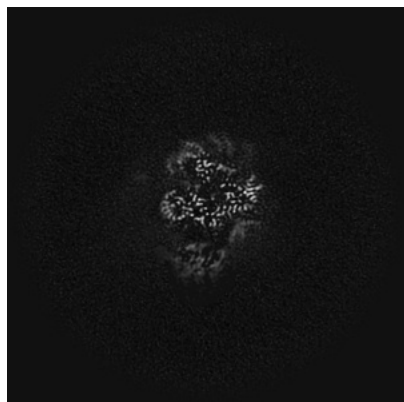


Z Index: 270

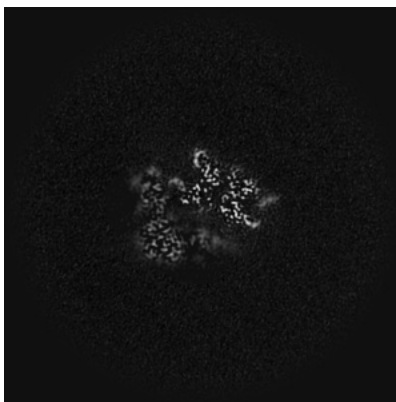
The images above show central slices of the map in three orthogonal directions.

6.3 Largest variance slices [i](#)

6.3.1 Primary map



X Index: 288

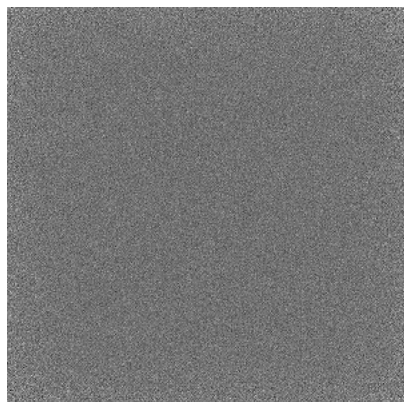


Y Index: 271

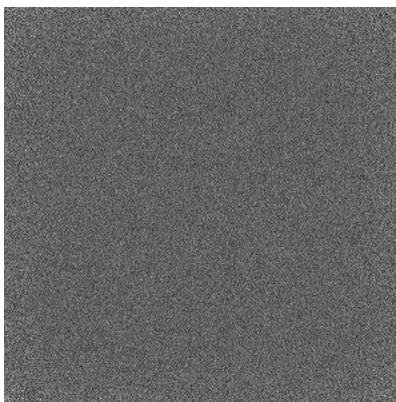


Z Index: 268

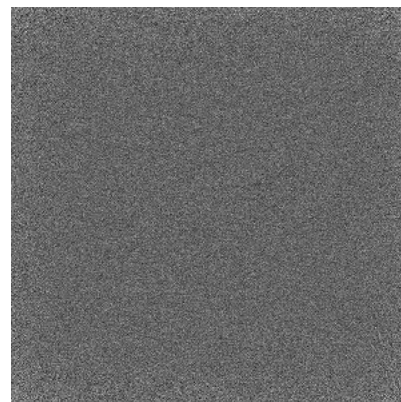
6.3.2 Raw map



X Index: 0



Y Index: 0

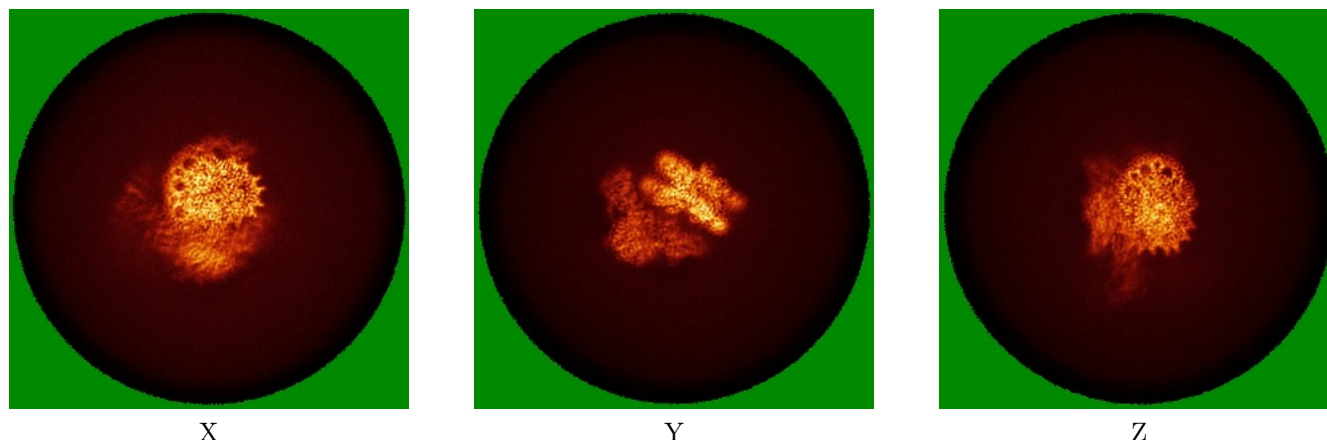


Z Index: 0

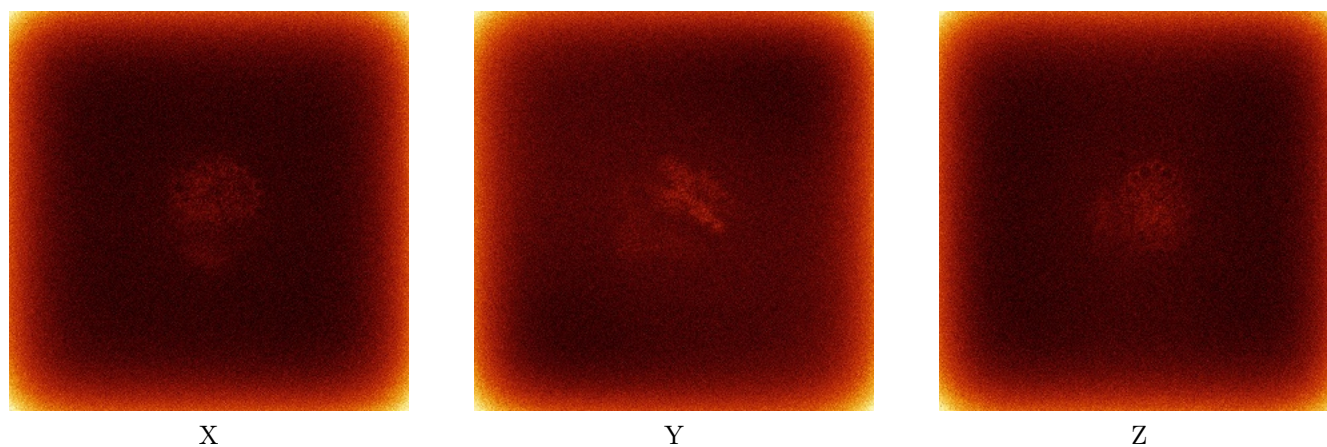
The images above show the largest variance slices of the map in three orthogonal directions.

6.4 Orthogonal standard-deviation projections (False-color) [i](#)

6.4.1 Primary map



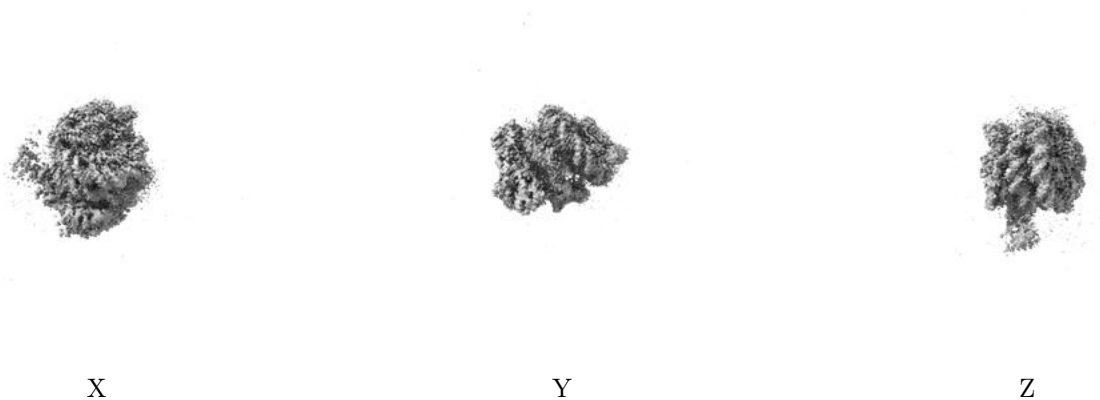
6.4.2 Raw map



The images above show the map standard deviation projections with false color in three orthogonal directions. Minimum values are shown in green, max in blue, and dark to light orange shades represent small to large values respectively.

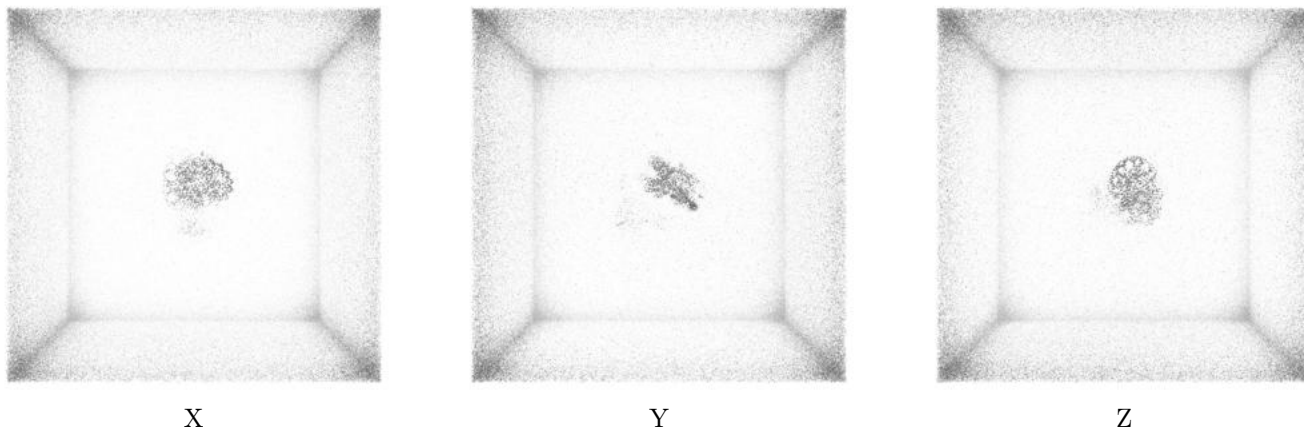
6.5 Orthogonal surface views [i](#)

6.5.1 Primary map



The images above show the 3D surface view of the map at the recommended contour level 0.05. These images, in conjunction with the slice images, may facilitate assessment of whether an appropriate contour level has been provided.

6.5.2 Raw map



These images show the 3D surface of the raw map. The raw map's contour level was selected so that its surface encloses the same volume as the primary map does at its recommended contour level.

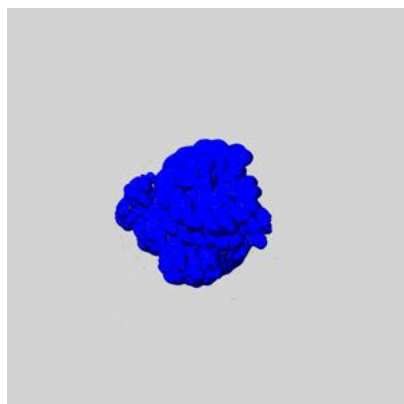
6.6 Mask visualisation [i](#)

This section shows the 3D surface view of the primary map at 50% transparency overlaid with the specified mask at 0% transparency

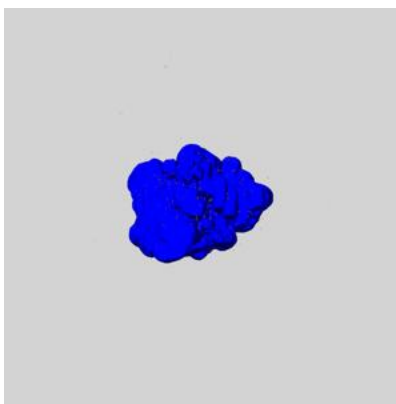
A mask typically either:

- Encompasses the whole structure
- Separates out a domain, a functional unit, a monomer or an area of interest from a larger structure

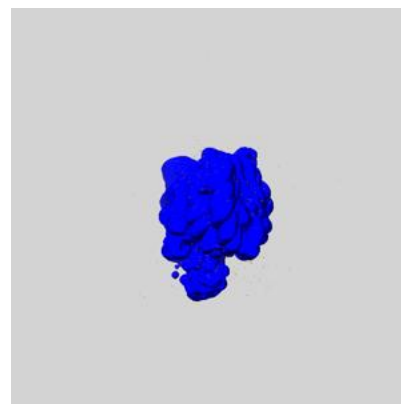
6.6.1 emd_37127_msk_1.map [i](#)



X



Y

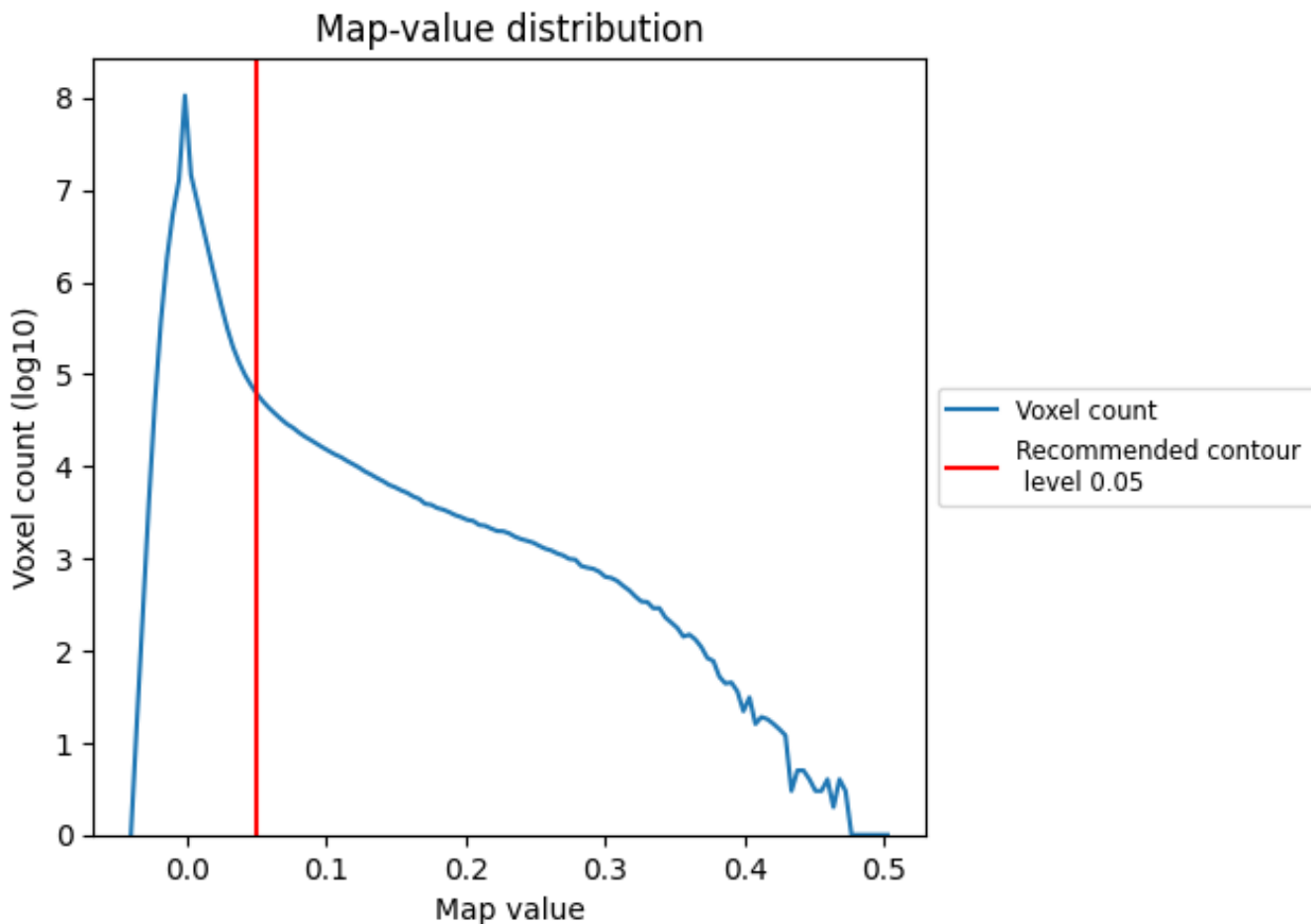


Z

7 Map analysis [i](#)

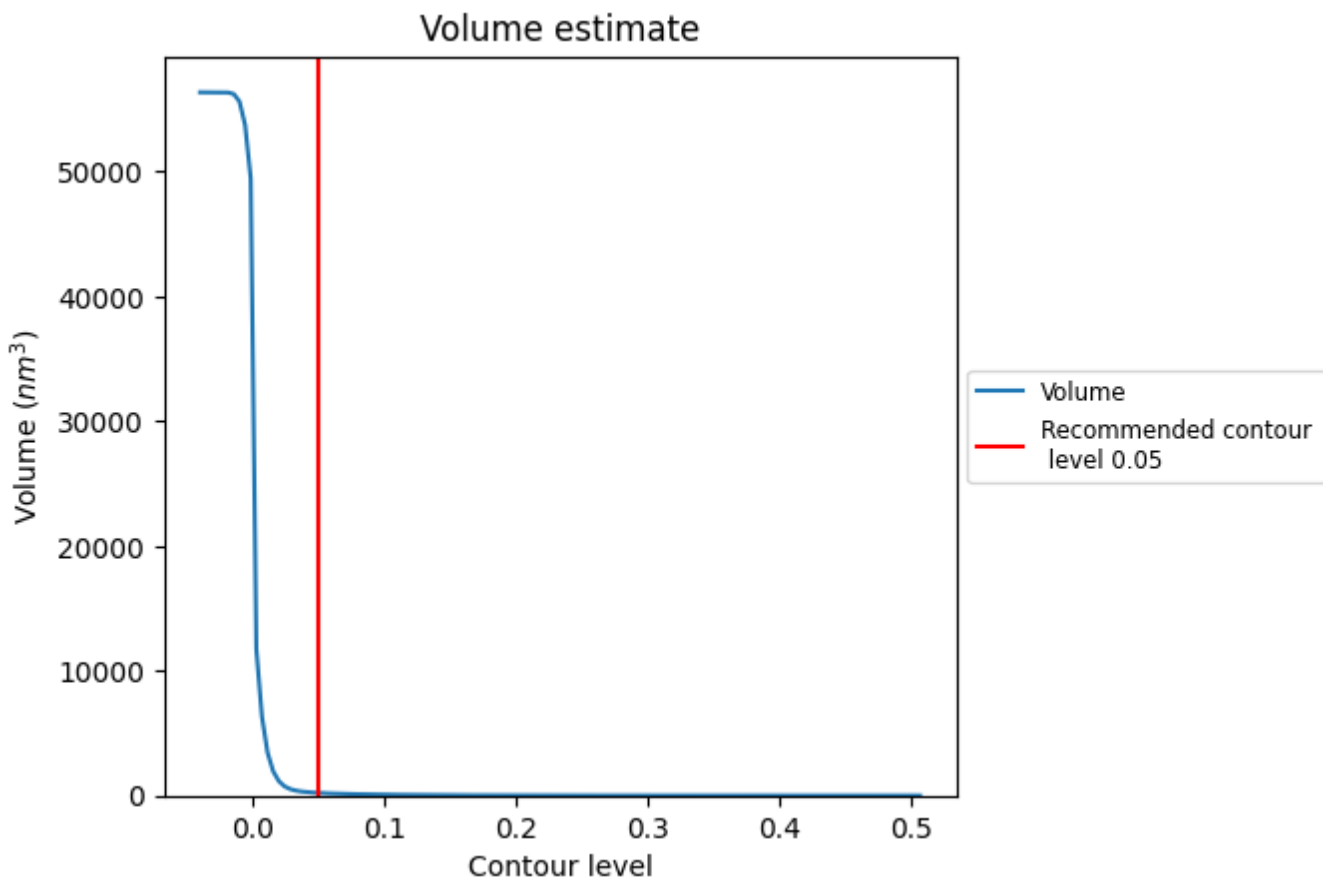
This section contains the results of statistical analysis of the map.

7.1 Map-value distribution [i](#)



The map-value distribution is plotted in 128 intervals along the x-axis. The y-axis is logarithmic. A spike in this graph at zero usually indicates that the volume has been masked.

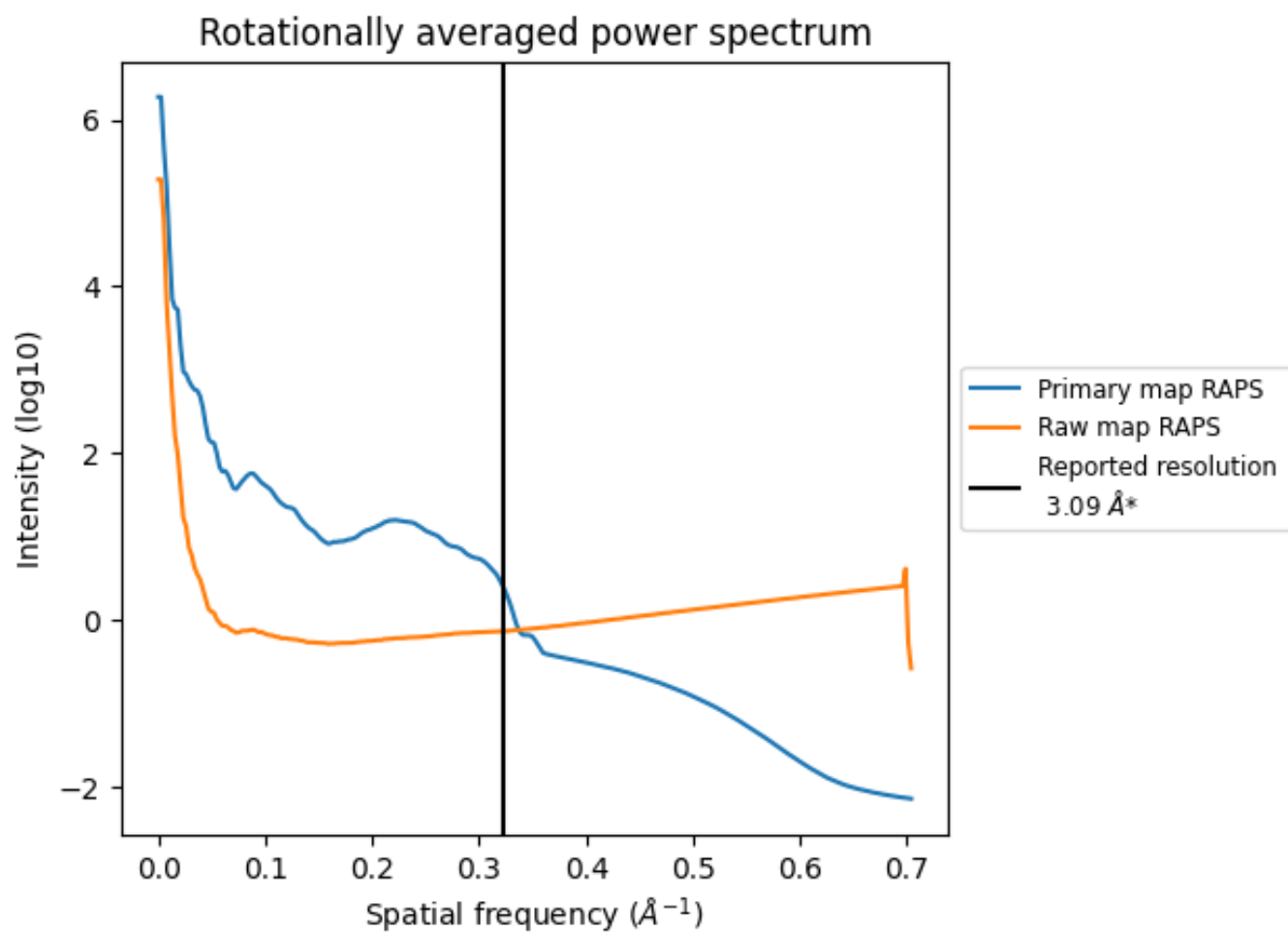
7.2 Volume estimate [i](#)



The volume at the recommended contour level is 209 nm³; this corresponds to an approximate mass of 189 kDa.

The volume estimate graph shows how the enclosed volume varies with the contour level. The recommended contour level is shown as a vertical line and the intersection between the line and the curve gives the volume of the enclosed surface at the given level.

7.3 Rotationally averaged power spectrum [i](#)

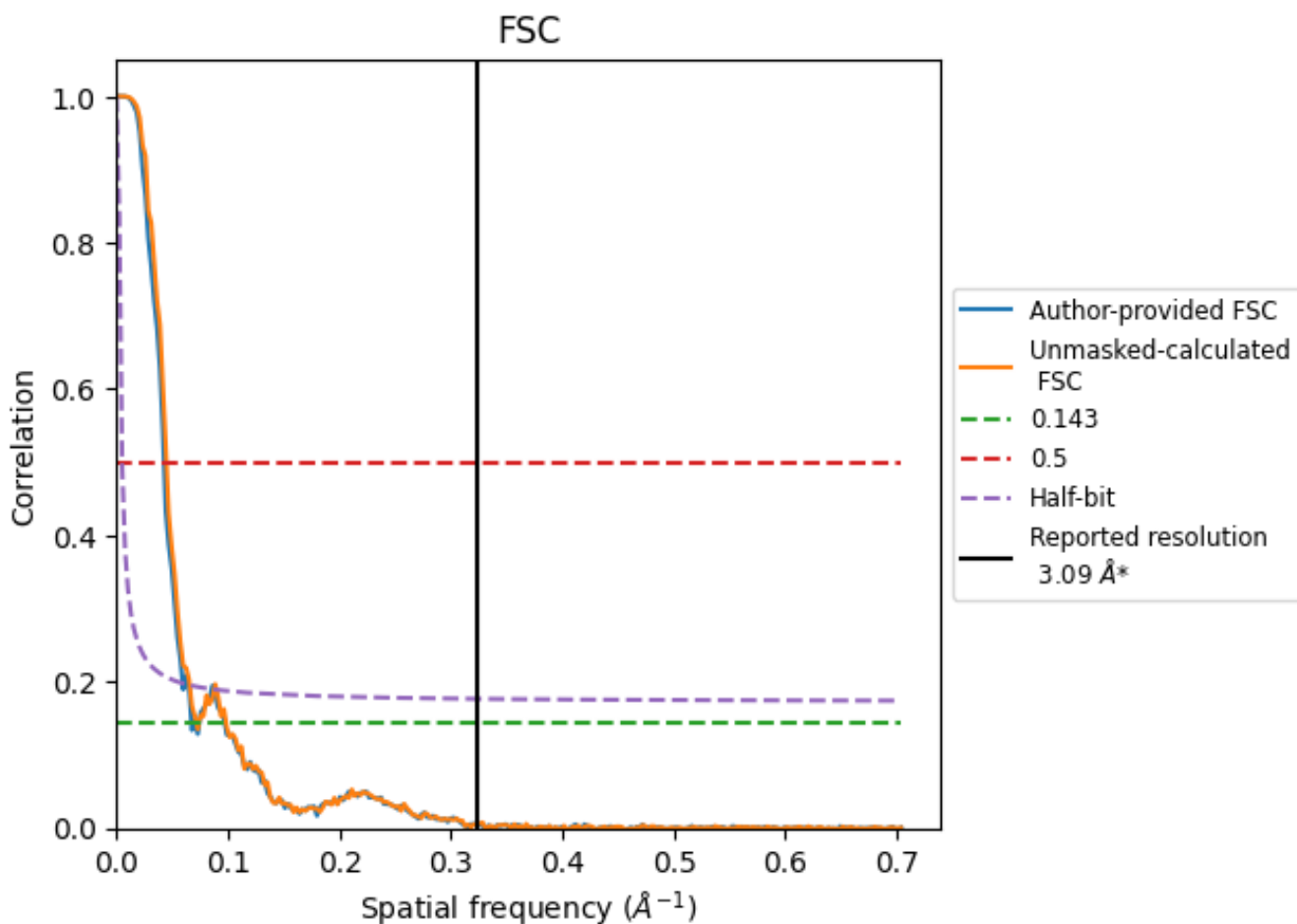


*Reported resolution corresponds to spatial frequency of 0.324 Å⁻¹

8 Fourier-Shell correlation [i](#)

Fourier-Shell Correlation (FSC) is the most commonly used method to estimate the resolution of single-particle and subtomogram-averaged maps. The shape of the curve depends on the imposed symmetry, mask and whether or not the two 3D reconstructions used were processed from a common reference. The reported resolution is shown as a black line. A curve is displayed for the half-bit criterion in addition to lines showing the 0.143 gold standard cut-off and 0.5 cut-off.

8.1 FSC [i](#)



*Reported resolution corresponds to spatial frequency of 0.324 Å⁻¹

8.2 Resolution estimates [i](#)

Resolution estimate (Å)	Estimation criterion (FSC cut-off)		
	0.143	0.5	Half-bit
Reported by author	3.09	-	-
Author-provided FSC curve	14.84	23.42	16.81
Unmasked-calculated*	13.93	22.27	15.22

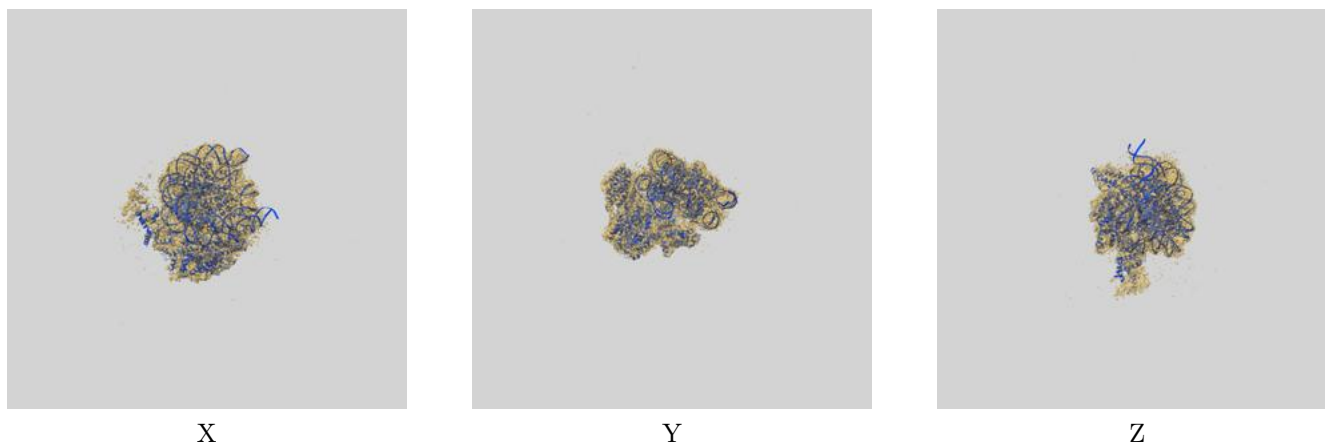
*Resolution estimate based on FSC curve calculated by comparison of deposited half-maps. The value from author-provided FSC intersecting FSC 0.143 CUT-OFF 14.84 differs from the reported value 3.09 by more than 10 %

The value from deposited half-maps intersecting FSC 0.143 CUT-OFF 13.93 differs from the reported value 3.09 by more than 10 %

9 Map-model fit [i](#)

This section contains information regarding the fit between EMDB map EMD-37127 and PDB model 8KD7. Per-residue inclusion information can be found in section 3 on page 10.

9.1 Map-model overlay [i](#)



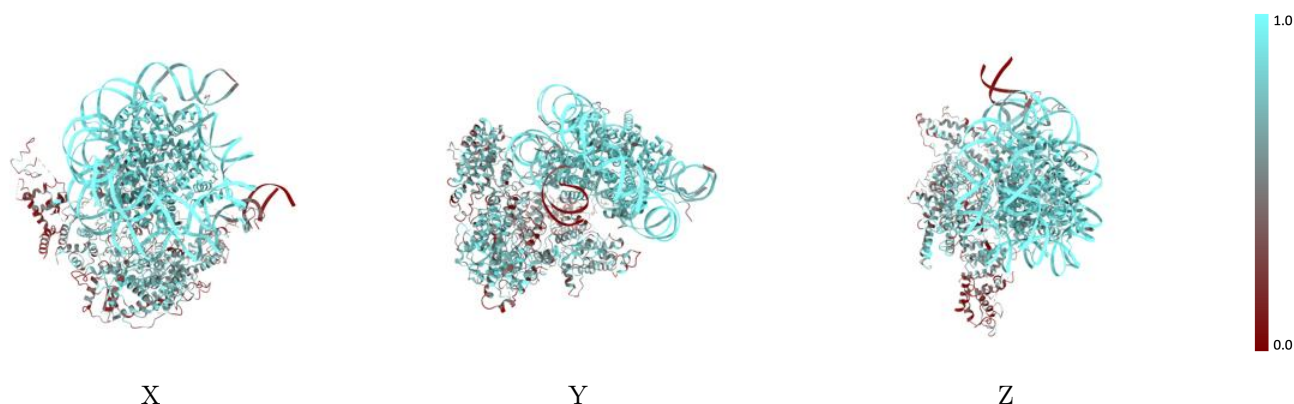
The images above show the 3D surface view of the map at the recommended contour level 0.05 at 50% transparency in yellow overlaid with a ribbon representation of the model coloured in blue. These images allow for the visual assessment of the quality of fit between the atomic model and the map.

9.2 Q-score mapped to coordinate model [i](#)



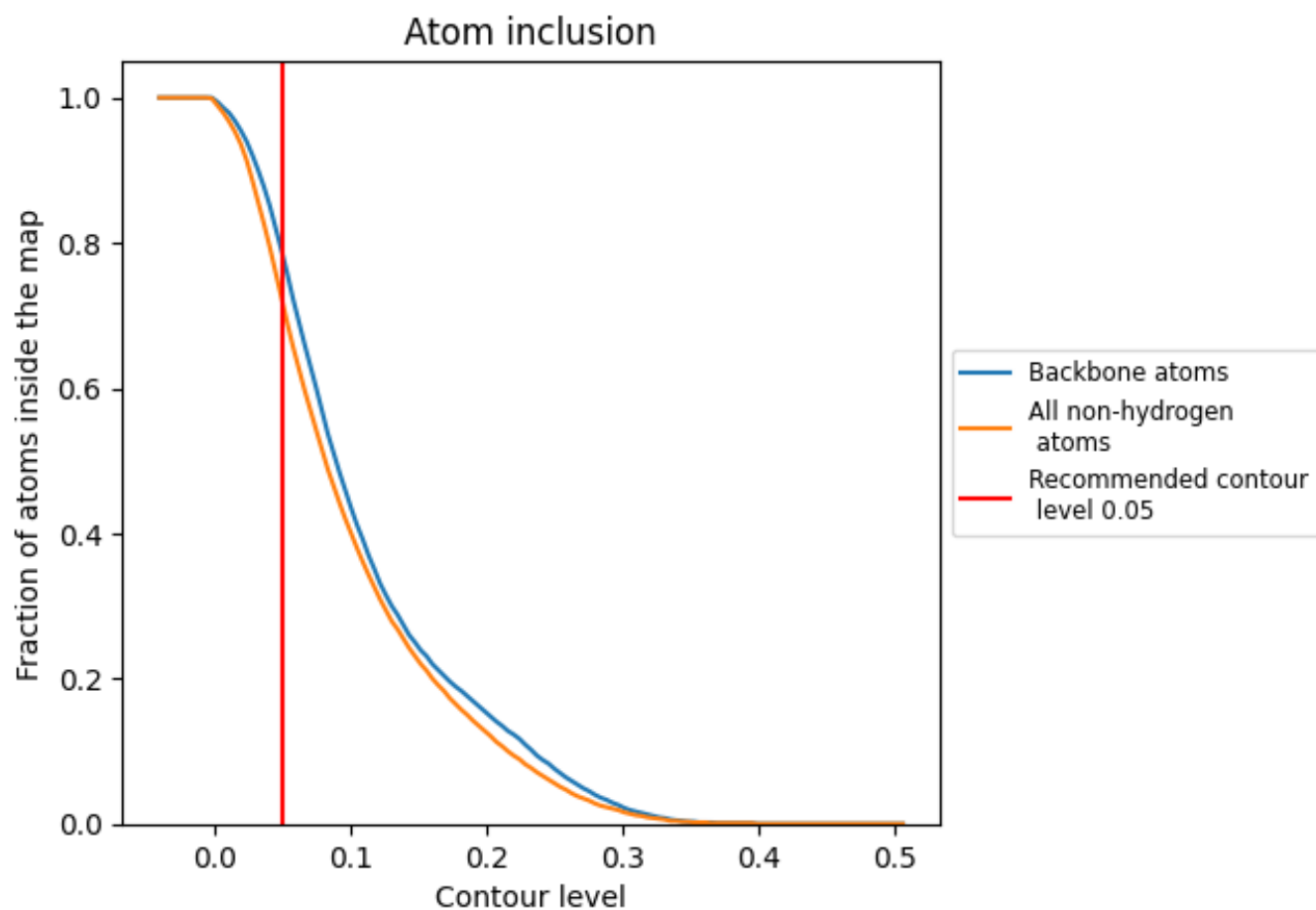
The images above show the model with each residue coloured according to its Q-score. This shows their resolvability in the map with higher Q-score values reflecting better resolvability. Please note: Q-score is calculating the resolvability of atoms, and thus high values are only expected at resolutions at which atoms can be resolved. Low Q-score values may therefore be expected for many entries.

9.3 Atom inclusion mapped to coordinate model [i](#)



The images above show the model with each residue coloured according to its atom inclusion. This shows to what extent they are inside the map at the recommended contour level (0.05).































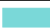



9.4 Atom inclusion [i](#)



At the recommended contour level, 79% of all backbone atoms, 72% of all non-hydrogen atoms, are inside the map.

9.5 Map-model fit summary

The table lists the average atom inclusion at the recommended contour level (0.05) and Q-score for the entire model and for each chain.

Chain	Atom inclusion	Q-score
All	 0.7220	 0.3240
A	 0.7250	 0.2970
B	 0.5650	 0.2350
D	 0.6810	 0.2760
E	 0.5390	 0.2110
F	 0.2200	 0.1500
G	 0.2760	 0.1440
O	 0.8520	 0.4510
P	 0.8900	 0.4860
Q	 0.8580	 0.4280
R	 0.9050	 0.4840
S	 0.8810	 0.4710
T	 0.8870	 0.4890
U	 0.8620	 0.4650
V	 0.8350	 0.4350
X	 0.8530	 0.3490
Y	 0.8500	 0.3570

