



Full wwPDB EM Validation Report ⓘ

May 6, 2024 – 04:15 AM JST

PDB ID : 8W9C
EMDB ID : EMD-37364
Title : Cryo-EM structure of the Rpd3S complex from budding yeast
Authors : Wang, C.; Zhan, X.
Deposited on : 2023-09-05
Resolution : 3.30 Å (reported)

This is a Full wwPDB EM Validation Report for a publicly released PDB entry.

We welcome your comments at validation@mail.wwpdb.org

A user guide is available at

<https://www.wwpdb.org/validation/2017/EMValidationReportHelp>

with specific help available everywhere you see the ⓘ symbol.

The types of validation reports are described at

<http://www.wwpdb.org/validation/2017/FAQs#types>.

The following versions of software and data (see [references ⓘ](#)) were used in the production of this report:

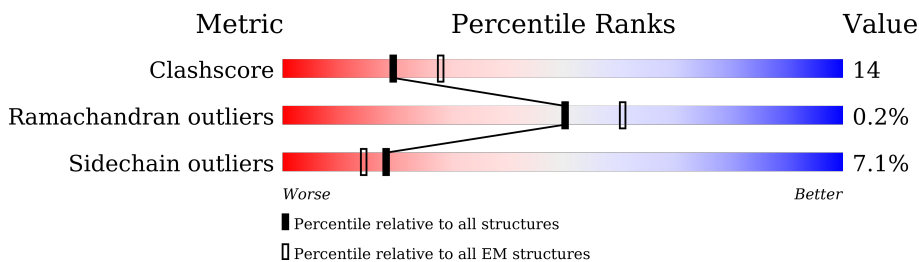
EMDB validation analysis : 0.0.1.dev92
MolProbity : 4.02b-467
Percentile statistics : 20191225.v01 (using entries in the PDB archive December 25th 2019)
MapQ : 1.9.13
Ideal geometry (proteins) : Engh & Huber (2001)
Ideal geometry (DNA, RNA) : Parkinson et al. (1996)
Validation Pipeline (wwPDB-VP) : 2.36.2

1 Overall quality at a glance

The following experimental techniques were used to determine the structure:
ELECTRON MICROSCOPY

The reported resolution of this entry is 3.30 Å.

Percentile scores (ranging between 0-100) for global validation metrics of the entry are shown in the following graphic. The table shows the number of entries on which the scores are based.



Metric	Whole archive (#Entries)	EM structures (#Entries)
Clashscore	158937	4297
Ramachandran outliers	154571	4023
Sidechain outliers	154315	3826

The table below summarises the geometric issues observed across the polymeric chains and their fit to the map. The red, orange, yellow and green segments of the bar indicate the fraction of residues that contain outliers for ≥ 3 , 2, 1 and 0 types of geometric quality criteria respectively. A grey segment represents the fraction of residues that are not modelled. The numeric value for each fraction is indicated below the corresponding segment, with a dot representing fractions $\leq 5\%$. The upper red bar (where present) indicates the fraction of residues that have poor fit to the EM map (all-atom inclusion $< 40\%$). The numeric value is given above the bar.

Mol	Chain	Length	Quality of chain
1	A	1536	
2	E	684	
2	F	684	
3	B	433	
4	C	401	
4	D	401	

2 Entry composition [i](#)

There are 6 unique types of molecules in this entry. The entry contains 15278 atoms, of which 0 are hydrogens and 0 are deuteriums.

In the tables below, the AltConf column contains the number of residues with at least one atom in alternate conformation and the Trace column contains the number of residues modelled with at most 2 atoms.

- Molecule 1 is a protein called Transcriptional regulatory protein SIN3.

Mol	Chain	Residues	Atoms					AltConf	Trace
			Total	C	N	O	S		
1	A	606	5066	3253	860	938	15	0	0

- Molecule 2 is a protein called Transcriptional regulatory protein RCO1.

Mol	Chain	Residues	Atoms					AltConf	Trace
			Total	C	N	O	S		
2	E	353	2884	1837	493	536	18	0	0
2	F	156	1282	822	211	239	10	0	0

- Molecule 3 is a protein called Histone deacetylase RPD3.

Mol	Chain	Residues	Atoms					AltConf	Trace
			Total	C	N	O	S		
3	B	385	3057	1948	513	571	25	0	0

- Molecule 4 is a protein called Chromatin modification-related protein EAF3.

Mol	Chain	Residues	Atoms					AltConf	Trace
			Total	C	N	O	S		
4	C	183	1483	950	239	285	9	0	0
4	D	185	1497	959	241	288	9	0	0

- Molecule 5 is ZINC ION (three-letter code: ZN) (formula: Zn).

Mol	Chain	Residues	Atoms		AltConf
5	E	4	Total	Zn	0
			4	4	
5	B	1	Total	Zn	0
			1	1	

Continued on next page...

Continued from previous page...

Mol	Chain	Residues	Atoms		AltConf
5	F	2	Total	Zn	0
			2	2	

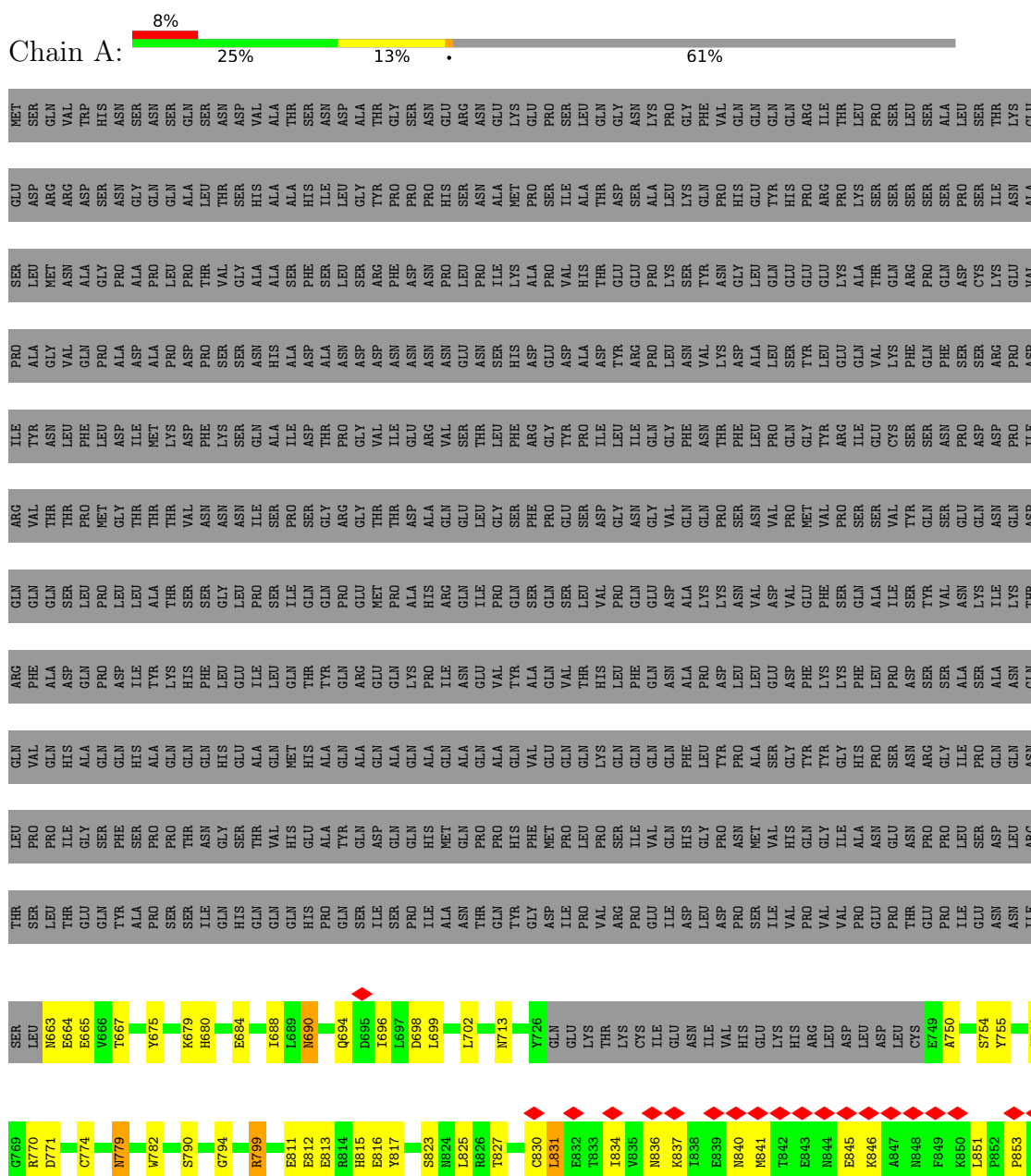
- Molecule 6 is POTASSIUM ION (three-letter code: K) (formula: K).

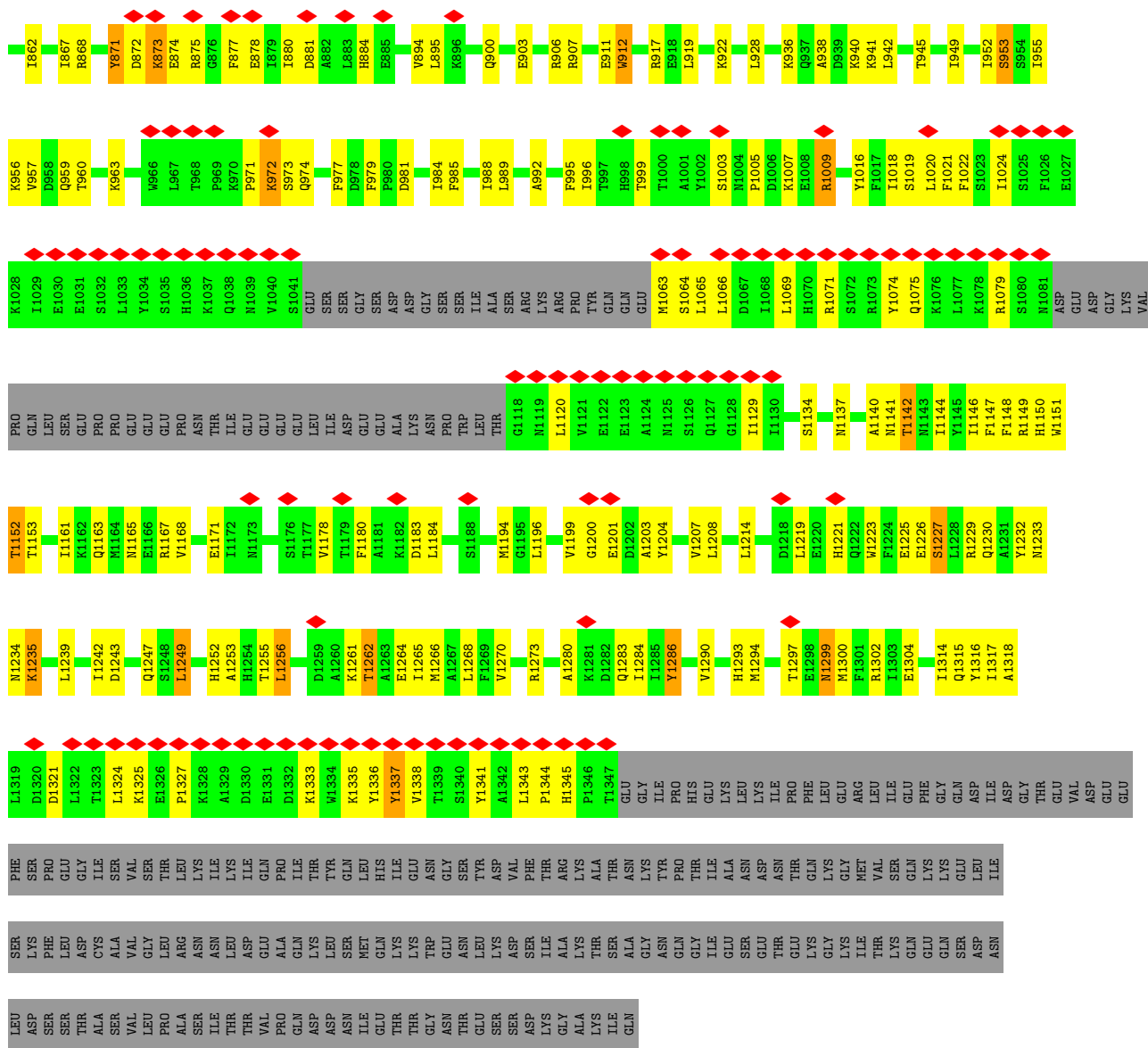
Mol	Chain	Residues	Atoms		AltConf
6	B	2	Total	K	0
			2	2	

3 Residue-property plots

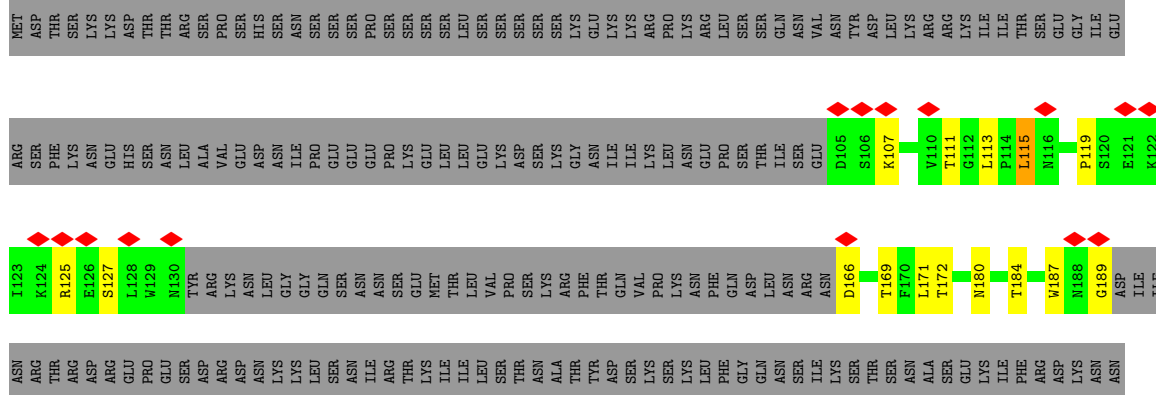
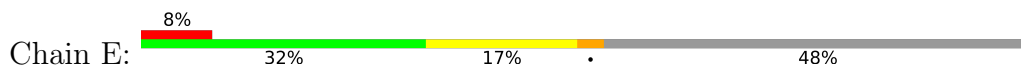
These plots are drawn for all protein, RNA, DNA and oligosaccharide chains in the entry. The first graphic for a chain summarises the proportions of the various outlier classes displayed in the second graphic. The second graphic shows the sequence view annotated by issues in geometry and atom inclusion in map density. Residues are color-coded according to the number of geometric quality criteria for which they contain at least one outlier: green = 0, yellow = 1, orange = 2 and red = 3 or more. A red diamond above a residue indicates a poor fit to the EM map for this residue (all-atom inclusion < 40%). Stretches of 2 or more consecutive residues without any outlier are shown as a green connector. Residues present in the sample, but not in the model, are shown in grey.

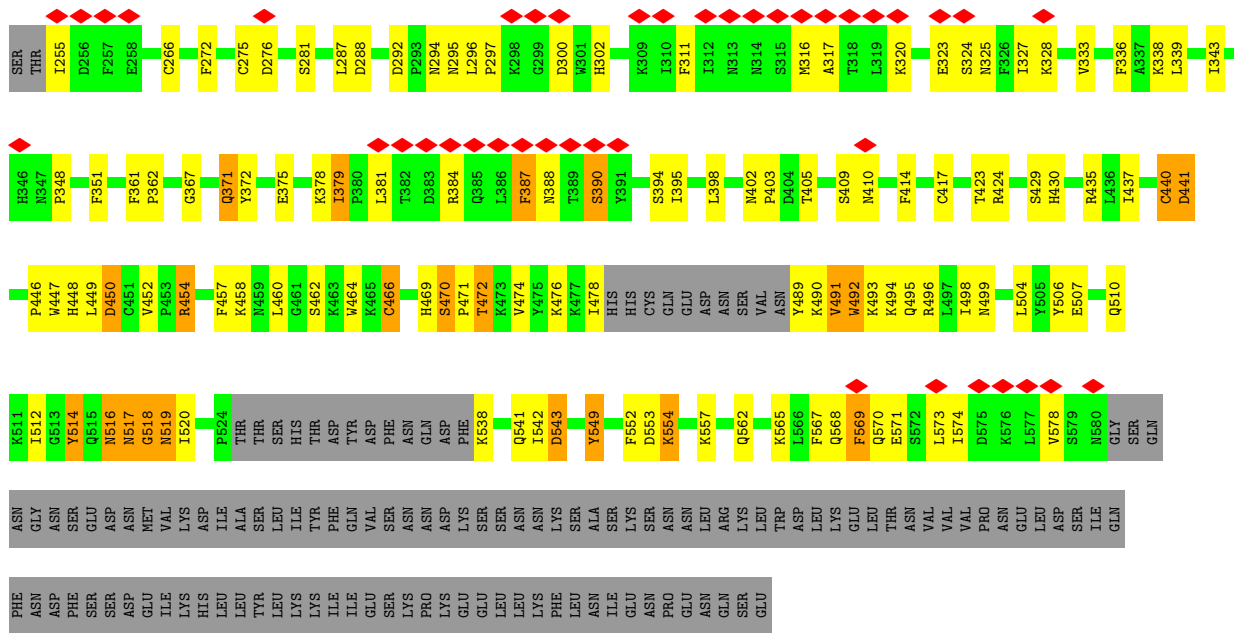
- Molecule 1: Transcriptional regulatory protein SIN3



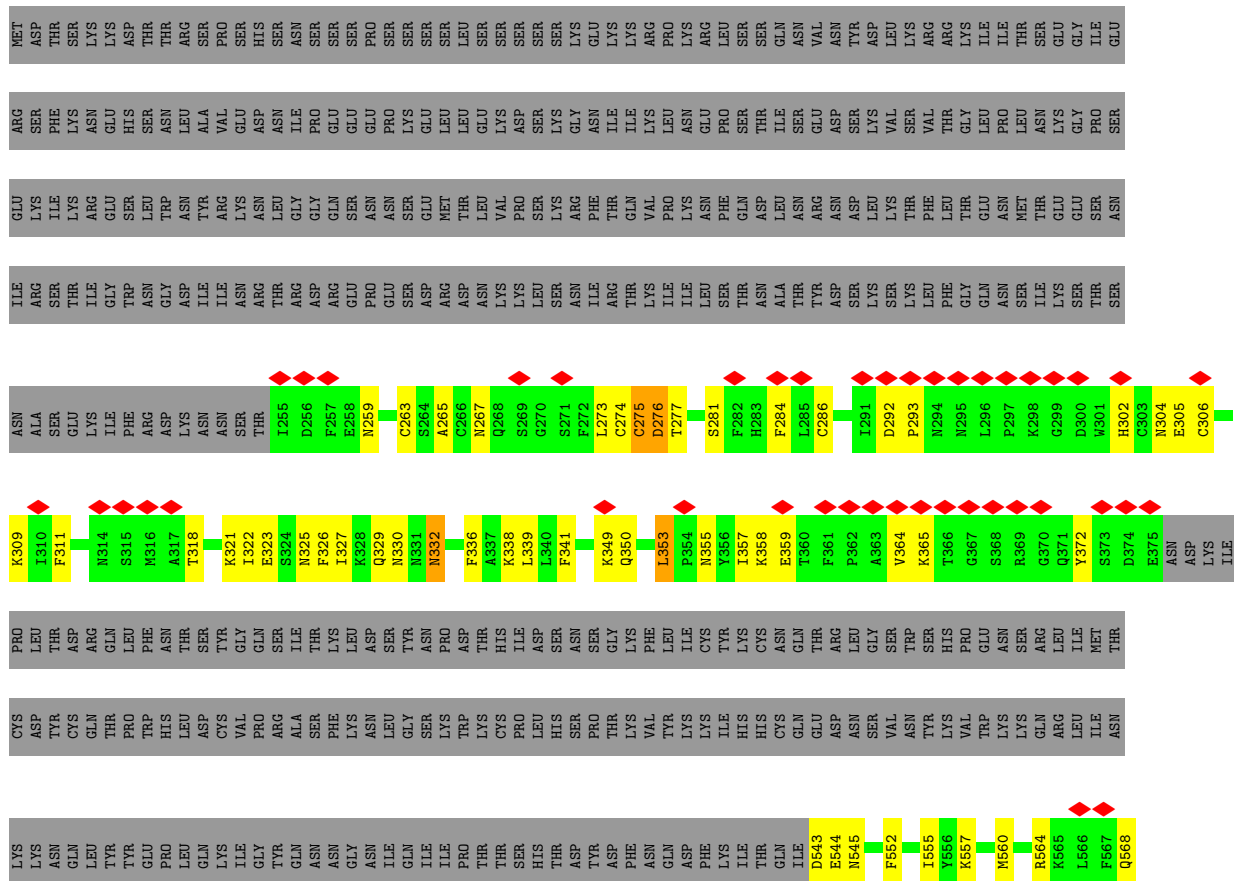


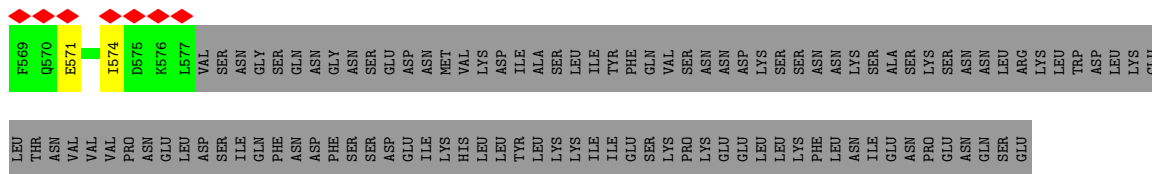
• Molecule 2: Transcriptional regulatory protein RCO1



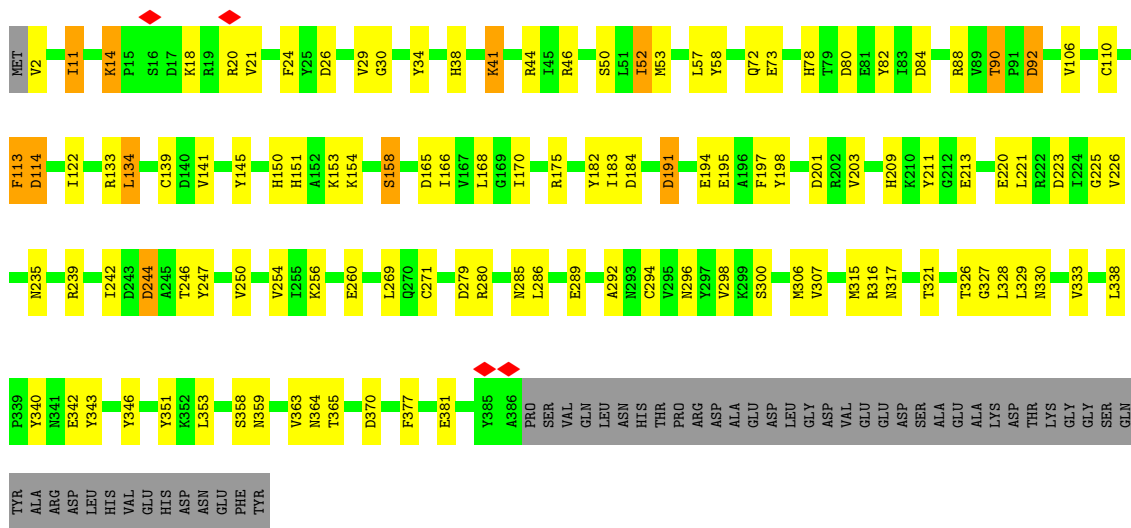


• Molecule 2: Transcriptional regulatory protein RCO1

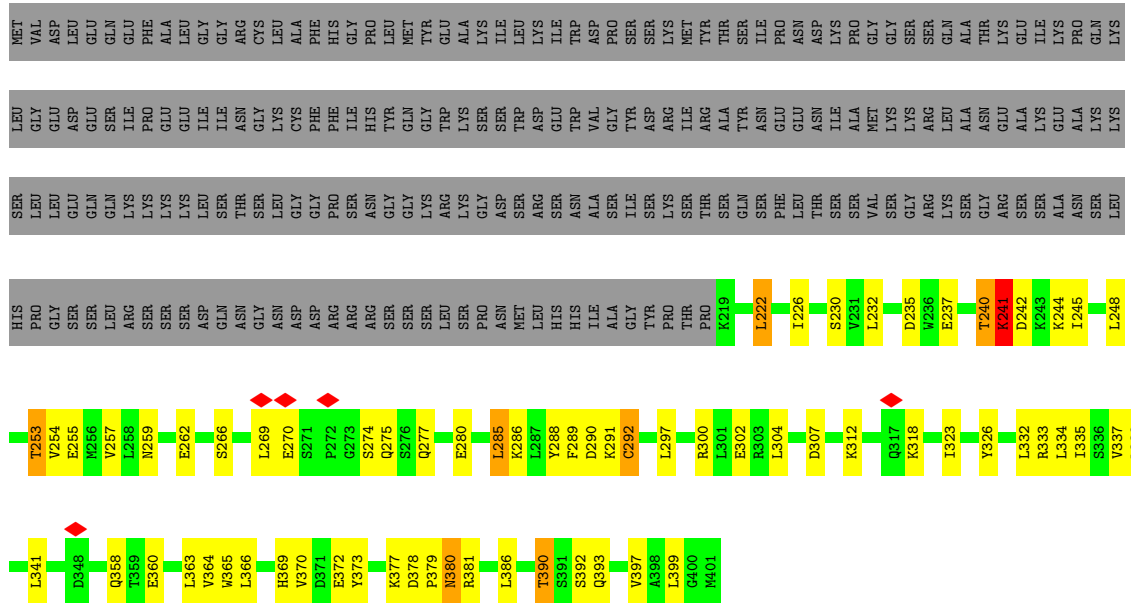




• Molecule 3: Histone deacetylase RPD3



• Molecule 4: Chromatin modification-related protein EAF3



• Molecule 4: Chromatin modification-related protein EAF3

4 Experimental information

Property	Value	Source
EM reconstruction method	SINGLE PARTICLE	Depositor
Imposed symmetry	POINT, Not provided	
Number of particles used	378011	Depositor
Resolution determination method	FSC 0.143 CUT-OFF	Depositor
CTF correction method	NONE	Depositor
Microscope	FEI TITAN KRIOS	Depositor
Voltage (kV)	300	Depositor
Electron dose ($e^-/\text{\AA}^2$)	50	Depositor
Minimum defocus (nm)	1700	Depositor
Maximum defocus (nm)	2300	Depositor
Magnification	Not provided	
Image detector	GATAN K3 (6k x 4k)	Depositor
Maximum map value	4.968	Depositor
Minimum map value	-3.542	Depositor
Average map value	0.009	Depositor
Map value standard deviation	0.092	Depositor
Recommended contour level	0.5	Depositor
Map size (\AA)	301.56, 301.56, 301.56	wwPDB
Map dimensions	280, 280, 280	wwPDB
Map angles ($^\circ$)	90.0, 90.0, 90.0	wwPDB
Pixel spacing (\AA)	1.077, 1.077, 1.077	Depositor

5 Model quality [i](#)

5.1 Standard geometry [i](#)

Bond lengths and bond angles in the following residue types are not validated in this section: ZN, K

The Z score for a bond length (or angle) is the number of standard deviations the observed value is removed from the expected value. A bond length (or angle) with $|Z| > 5$ is considered an outlier worth inspection. RMSZ is the root-mean-square of all Z scores of the bond lengths (or angles).

Mol	Chain	Bond lengths		Bond angles	
		RMSZ	# Z >5	RMSZ	# Z >5
1	A	0.27	0/5180	0.43	0/6984
2	E	0.41	2/2952 (0.1%)	0.61	4/3978 (0.1%)
2	F	0.27	0/1313	0.44	0/1763
3	B	0.31	0/3137	0.45	0/4246
4	C	0.29	0/1509	0.47	0/2039
4	D	0.26	0/1524	0.45	0/2061
All	All	0.31	2/15615 (0.0%)	0.48	4/21071 (0.0%)

Chiral center outliers are detected by calculating the chiral volume of a chiral center and verifying if the center is modelled as a planar moiety or with the opposite hand. A planarity outlier is detected by checking planarity of atoms in a peptide group, atoms in a mainchain group or atoms of a sidechain that are expected to be planar.

Mol	Chain	#Chirality outliers	#Planarity outliers
4	C	0	1

All (2) bond length outliers are listed below:

Mol	Chain	Res	Type	Atoms	Z	Observed(Å)	Ideal(Å)
2	E	470	SER	CA-CB	-5.48	1.44	1.52
2	E	471	PRO	C-O	-5.37	1.12	1.23

All (4) bond angle outliers are listed below:

Mol	Chain	Res	Type	Atoms	Z	Observed(°)	Ideal(°)
2	E	518	GLY	N-CA-C	-8.56	91.69	113.10
2	E	469	HIS	C-N-CA	6.15	137.08	121.70
2	E	516	ASN	C-N-CA	5.31	134.97	121.70
2	E	471	PRO	N-CA-C	5.17	125.55	112.10

There are no chirality outliers.

All (1) planarity outliers are listed below:

Mol	Chain	Res	Type	Group
4	C	241	LYS	Peptide

5.2 Too-close contacts [i](#)

In the following table, the Non-H and H(model) columns list the number of non-hydrogen atoms and hydrogen atoms in the chain respectively. The H(added) column lists the number of hydrogen atoms added and optimized by MolProbity. The Clashes column lists the number of clashes within the asymmetric unit, whereas Symm-Clashes lists symmetry-related clashes.

Mol	Chain	Non-H	H(model)	H(added)	Clashes	Symm-Clashes
1	A	5066	0	5024	155	0
2	E	2884	0	2833	107	0
2	F	1282	0	1244	39	0
3	B	3057	0	2933	79	0
4	C	1483	0	1510	45	0
4	D	1497	0	1524	49	0
5	B	1	0	0	0	0
5	E	4	0	0	0	0
5	F	2	0	0	0	0
6	B	2	0	0	0	0
All	All	15278	0	15068	421	0

The all-atom clashscore is defined as the number of clashes found per 1000 atoms (including hydrogen atoms). The all-atom clashscore for this structure is 14.

All (421) close contacts within the same asymmetric unit are listed below, sorted by their clash magnitude.

Atom-1	Atom-2	Interatomic distance (Å)	Clash overlap (Å)
1:A:794:GLY:HA2	2:E:460:LEU:HD13	1.58	0.83
4:D:265:VAL:HG23	4:D:278:LEU:HD11	1.61	0.81
2:E:476:LYS:HB3	2:E:490:LYS:HG2	1.68	0.76
3:B:44:ARG:HB3	3:B:315:MET:HG2	1.68	0.76
4:C:240:THR:O	4:C:242:ASP:N	2.18	0.75
3:B:244:ASP:OD1	3:B:244:ASP:N	2.20	0.74
3:B:113:PHE:HD2	3:B:114:ASP:H	1.35	0.73
3:B:2:VAL:N	3:B:370:ASP:OD2	2.21	0.73
4:D:240:THR:HG21	2:F:372:TYR:HB2	1.70	0.73
4:D:293:LEU:HA	4:D:297:LEU:HD12	1.69	0.72

Continued on next page...

Continued from previous page...

Atom-1	Atom-2	Interatomic distance (Å)	Clash overlap (Å)
2:E:372:TYR:OH	2:E:496:ARG:NH1	2.22	0.72
3:B:326:THR:O	3:B:330:ASN:ND2	2.23	0.70
2:F:332:ASN:OD1	2:F:332:ASN:N	2.21	0.70
2:E:266:CYS:SG	4:C:300:ARG:NH1	2.65	0.70
2:E:371:GLN:HA	4:C:240:THR:HG21	1.74	0.70
2:E:171:LEU:O	2:E:172:THR:OG1	2.09	0.69
4:D:255:GLU:OE1	4:D:324:ARG:NH1	2.24	0.69
4:C:259:ASN:OD1	4:C:286:LYS:NZ	2.20	0.69
1:A:768:SER:OG	3:B:80:ASP:OD1	2.10	0.69
2:E:384:ARG:HA	2:E:387:PHE:HB3	1.74	0.69
4:D:303:ARG:NH1	2:F:286:CYS:SG	2.65	0.69
2:E:512:ILE:HG23	2:E:549:TYR:HB3	1.75	0.68
2:E:362:PRO:HG3	2:E:499:ASN:HB2	1.76	0.68
4:D:296:MET:HE1	4:D:341:LEU:HD21	1.74	0.67
4:C:378:ASP:OD2	4:C:381:ARG:NH2	2.27	0.67
1:A:1302:ARG:NH2	1:A:1304:GLU:OE2	2.28	0.67
2:E:452:VAL:HG21	2:E:464:TRP:HZ2	1.59	0.66
1:A:1178:VAL:HG22	1:A:1180:PHE:H	1.60	0.66
3:B:153:LYS:NZ	3:B:191:ASP:OD2	2.28	0.66
2:E:507:GLU:HB2	2:E:541:GLN:HE21	1.61	0.66
3:B:53:MET:HG2	3:B:58:TYR:HD1	1.61	0.65
1:A:1223:TRP:O	1:A:1227:SER:OG	2.14	0.65
3:B:145:TYR:OH	3:B:326:THR:OG1	2.14	0.65
2:E:516:ASN:HD21	2:E:520:ILE:HG22	1.62	0.65
1:A:959:GLN:OE1	1:A:974:GLN:NE2	2.30	0.64
2:E:493:LYS:HE2	2:E:517:ASN:HB3	1.79	0.64
3:B:209:HIS:HE1	3:B:235:ASN:HB3	1.61	0.64
1:A:831:LEU:HB3	1:A:895:LEU:HD13	1.78	0.64
1:A:1140:ALA:HB1	1:A:1144:ILE:HB	1.79	0.63
1:A:813:GLU:HG2	2:E:111:THR:HG22	1.80	0.63
2:E:343:ILE:HG21	4:C:291:LYS:HD3	1.80	0.63
1:A:799:ARG:HH21	2:E:390:SER:HB3	1.64	0.63
2:E:495:GLN:NE2	2:E:519:ASN:OD1	2.31	0.63
3:B:29:VAL:HG22	3:B:122:ILE:HG21	1.81	0.63
4:D:370:VAL:HG23	4:D:374:PHE:HD2	1.64	0.63
2:F:302:HIS:HB3	2:F:306:CYS:HB2	1.80	0.63
1:A:868:ARG:HD2	1:A:873:LYS:HE3	1.81	0.62
1:A:1163:GLN:O	1:A:1167:ARG:NH2	2.32	0.62
2:E:414:PHE:HB3	2:E:423:THR:HG21	1.82	0.62
1:A:665:GLU:HB3	2:E:552:PHE:CZ	2.35	0.61
1:A:941:LYS:HG2	1:A:942:LEU:HD23	1.82	0.61

Continued on next page...

Continued from previous page...

Atom-1	Atom-2	Interatomic distance (Å)	Clash overlap (Å)
1:A:1168:VAL:HG11	1:A:1232:TYR:CE1	2.35	0.61
4:D:345:THR:HG21	2:F:339:LEU:HD23	1.81	0.61
2:F:355:ASN:HD22	2:F:358:LYS:HE2	1.65	0.61
3:B:90:THR:HG23	3:B:92:ASP:H	1.66	0.60
2:E:184:THR:OG1	3:B:73:GLU:OE1	2.19	0.60
2:E:447:TRP:NE1	2:E:466:CYS:SG	2.75	0.60
1:A:977:PHE:CD2	1:A:1152:THR:HG21	2.37	0.59
2:F:263:CYS:O	2:F:267:ASN:N	2.30	0.59
1:A:698:ASP:OD2	1:A:699:LEU:N	2.29	0.59
4:D:235:ASP:OD1	4:D:333:ARG:NH2	2.35	0.59
2:E:489:TYR:OH	4:C:377:LYS:O	2.21	0.59
2:E:491:VAL:HG12	2:E:492:TRP:H	1.67	0.59
1:A:912:TRP:HH2	2:E:113:LEU:HD13	1.66	0.58
4:C:365:TRP:O	4:C:369:HIS:ND1	2.26	0.58
2:F:275:CYS:SG	2:F:276:ASP:N	2.75	0.58
1:A:871:TYR:HE2	1:A:894:VAL:HG23	1.68	0.58
2:F:325:ASN:O	2:F:329:GLN:HG2	2.03	0.58
1:A:1161:ILE:HD13	1:A:1239:LEU:HD21	1.85	0.58
2:E:381:LEU:HB3	2:E:384:ARG:HB2	1.86	0.57
2:F:571:GLU:HA	2:F:574:ILE:HD12	1.86	0.57
4:C:300:ARG:NH2	4:C:399:LEU:O	2.36	0.57
3:B:338:LEU:HD21	3:B:353:LEU:HD13	1.87	0.57
4:D:222:LEU:HD11	4:D:363:LEU:HD21	1.86	0.57
1:A:1141:ASN:HD21	1:A:1262:THR:HG23	1.70	0.57
1:A:875:ARG:HA	1:A:878:GLU:HG2	1.87	0.56
3:B:11:ILE:HD11	3:B:289:GLU:HB3	1.88	0.56
4:D:300:ARG:H	2:F:350:GLN:HE21	1.52	0.56
1:A:675:TYR:CE2	1:A:713:ASN:HB2	2.41	0.56
1:A:841:MET:O	1:A:846:LYS:NZ	2.39	0.56
1:A:1079:ARG:HE	1:A:1079:ARG:HA	1.71	0.56
1:A:1290:VAL:HA	1:A:1293:HIS:HD2	1.71	0.56
1:A:1219:LEU:HD11	1:A:1223:TRP:HB2	1.88	0.56
1:A:1300:MET:O	1:A:1317:ILE:HB	2.06	0.56
1:A:878:GLU:HA	1:A:881:ASP:OD1	2.06	0.55
2:E:449:LEU:HD11	2:E:457:PHE:CE2	2.41	0.55
2:E:472:THR:HB	2:E:494:LYS:HD3	1.88	0.55
1:A:782:TRP:CE2	3:B:226:VAL:HG21	2.41	0.55
2:E:324:SER:O	2:E:328:LYS:HG3	2.06	0.55
1:A:771:ASP:OD1	3:B:175:ARG:NH2	2.39	0.55
1:A:1335:LYS:HA	1:A:1338:VAL:HG22	1.87	0.55
3:B:279:ASP:OD2	3:B:280:ARG:N	2.35	0.55

Continued on next page...

Continued from previous page...

Atom-1	Atom-2	Interatomic distance (Å)	Clash overlap (Å)
2:E:472:THR:O	2:E:472:THR:OG1	2.06	0.55
1:A:779:ASN:O	1:A:779:ASN:ND2	2.40	0.55
2:E:452:VAL:O	2:E:454:ARG:N	2.39	0.55
3:B:57:LEU:HD11	3:B:327:GLY:HA2	1.89	0.55
4:D:287:LEU:O	4:D:291:LYS:HB2	2.06	0.54
2:F:353:LEU:H	2:F:353:LEU:HD23	1.72	0.54
1:A:872:ASP:O	1:A:875:ARG:N	2.40	0.54
4:C:269:LEU:HD13	4:C:274:SER:HB2	1.89	0.54
2:E:189:GLY:HA2	3:B:72:GLN:HB2	1.88	0.54
2:E:450:ASP:OD2	3:B:365:THR:OG1	2.25	0.54
4:C:248:LEU:HD11	4:C:326:TYR:CE1	2.42	0.54
1:A:911:GLU:HG2	2:E:119:PRO:HD2	1.89	0.54
2:E:440:CYS:SG	2:E:441:ASP:N	2.80	0.54
2:E:449:LEU:HD11	2:E:457:PHE:HE2	1.73	0.54
1:A:831:LEU:HD22	1:A:895:LEU:HB2	1.89	0.54
3:B:211:TYR:HE1	3:B:220:GLU:HG3	1.72	0.54
4:C:245:ILE:HG22	4:C:302:GLU:HB3	1.90	0.54
2:E:460:LEU:HD12	3:B:213:GLU:HG2	1.89	0.53
1:A:754:SER:OG	3:B:223:ASP:OD2	2.24	0.53
1:A:664:GLU:O	1:A:667:THR:OG1	2.27	0.53
2:E:498:ILE:HG21	4:C:226:ILE:HD13	1.91	0.53
2:F:274:CYS:HB2	2:F:281:SER:HB2	1.90	0.53
1:A:1142:THR:O	1:A:1146:ILE:HG12	2.09	0.53
2:E:543:ASP:OD1	2:E:543:ASP:N	2.40	0.53
3:B:285:ASN:ND2	3:B:285:ASN:O	2.42	0.53
1:A:1318:ALA:O	1:A:1321:ASP:N	2.40	0.53
3:B:50:SER:HG	3:B:343:TYR:HE2	1.57	0.52
2:F:265:ALA:HA	2:F:349:LYS:HA	1.90	0.52
3:B:285:ASN:OD1	3:B:358:SER:OG	2.16	0.52
4:D:229:LYS:O	4:D:233:VAL:HG23	2.08	0.52
2:F:326:PHE:O	2:F:330:ASN:ND2	2.35	0.52
1:A:972:LYS:HA	1:A:1325:LYS:HE2	1.91	0.52
3:B:239:ARG:HB3	3:B:363:VAL:HG23	1.90	0.52
4:C:253:THR:OG1	4:C:323:ILE:O	2.18	0.52
4:D:229:LYS:HD2	2:F:357:ILE:HG23	1.91	0.52
4:D:261:TYR:O	4:D:265:VAL:HG22	2.10	0.52
3:B:307:VAL:HG21	3:B:329:LEU:HD11	1.92	0.52
4:C:288:TYR:O	4:C:292:CYS:HB2	2.10	0.52
4:D:390:THR:HB	4:D:394:TYR:HB2	1.92	0.52
1:A:959:GLN:HE21	1:A:971:PRO:HB2	1.75	0.52
1:A:750:ALA:HB2	1:A:782:TRP:HZ3	1.74	0.52

Continued on next page...

Continued from previous page...

Atom-1	Atom-2	Interatomic distance (Å)	Clash overlap (Å)
4:D:298:LEU:HD22	4:D:302:GLU:HG3	1.92	0.51
1:A:816:GLU:OE2	2:E:115:LEU:HD11	2.11	0.51
2:F:543:ASP:OD1	2:F:544:GLU:N	2.43	0.51
2:E:361:PHE:CD1	2:E:496:ARG:HD3	2.46	0.51
3:B:26:ASP:O	3:B:29:VAL:HG23	2.11	0.51
1:A:675:TYR:CZ	1:A:713:ASN:HB2	2.45	0.51
1:A:1203:ALA:O	1:A:1207:VAL:HG23	2.10	0.51
2:E:567:PHE:O	2:E:570:GLN:HG2	2.10	0.51
1:A:1151:TRP:HE3	1:A:1249:LEU:HD11	1.74	0.51
4:D:247:ARG:NH2	4:D:382:SER:O	2.43	0.51
2:E:387:PHE:O	2:E:390:SER:HB2	2.10	0.51
2:E:570:GLN:O	2:E:574:ILE:HG12	2.11	0.51
1:A:952:ILE:HA	1:A:955:ILE:HG22	1.93	0.51
1:A:1327:PRO:HG2	1:A:1333:LYS:HG3	1.91	0.51
2:E:316:MET:O	2:E:320:LYS:HG3	2.11	0.51
2:F:321:LYS:O	2:F:325:ASN:ND2	2.44	0.51
1:A:989:LEU:HD11	1:A:1018:ILE:HD11	1.92	0.50
1:A:1165:ASN:OD1	1:A:1204:TYR:N	2.43	0.50
1:A:1144:ILE:HD11	1:A:1266:MET:HG2	1.92	0.50
4:D:236:TRP:HA	4:D:239:VAL:HG12	1.93	0.50
2:E:402:ASN:ND2	2:E:405:THR:OG1	2.45	0.50
4:C:366:LEU:O	4:C:370:VAL:HG23	2.12	0.50
4:D:304:LEU:HA	4:D:307:ASP:OD2	2.11	0.50
2:E:506:TYR:OH	4:D:348:ASP:OD2	2.22	0.50
2:F:552:PHE:O	2:F:555:ILE:HG13	2.13	0.49
1:A:812:GLU:OE2	3:B:280:ARG:NH2	2.38	0.49
3:B:21:VAL:HG13	3:B:141:VAL:HB	1.95	0.49
3:B:191:ASP:OD1	3:B:191:ASP:N	2.38	0.49
1:A:684:GLU:O	1:A:688:ILE:HG13	2.13	0.49
2:F:274:CYS:SG	2:F:275:CYS:N	2.86	0.49
1:A:755:TYR:OH	3:B:194:GLU:OE1	2.25	0.49
1:A:919:LEU:HD22	2:E:127:SER:OG	2.12	0.49
1:A:953:SER:O	1:A:957:VAL:HG13	2.13	0.49
1:A:1300:MET:HE3	1:A:1317:ILE:HG13	1.94	0.49
3:B:294:CYS:O	3:B:298:VAL:HG23	2.12	0.49
2:F:275:CYS:SG	2:F:277:THR:N	2.78	0.49
2:E:493:LYS:CE	2:E:517:ASN:HB3	2.43	0.49
1:A:663:ASN:OD1	1:A:664:GLU:N	2.46	0.49
1:A:851:LEU:HD13	1:A:855:LEU:HG	1.94	0.49
2:E:424:ARG:HD3	2:E:435:ARG:HG3	1.94	0.49
3:B:182:TYR:OH	3:B:184:ASP:OD1	2.21	0.49

Continued on next page...

Continued from previous page...

Atom-1	Atom-2	Interatomic distance (Å)	Clash overlap (Å)
1:A:984:ILE:O	1:A:988:ILE:HG13	2.13	0.49
1:A:1016:TYR:CD1	1:A:1065:LEU:HB2	2.48	0.49
1:A:1009:ARG:HE	1:A:1075:GLN:HE22	1.59	0.48
3:B:317:ASN:O	3:B:321:THR:OG1	2.25	0.48
1:A:696:ILE:HG22	2:E:474:VAL:HG21	1.94	0.48
1:A:1199:VAL:HG22	1:A:1200:GLY:H	1.79	0.48
3:B:84:ASP:OD1	3:B:88:ARG:NH1	2.27	0.48
4:C:360:GLU:O	4:C:364:VAL:HG13	2.13	0.48
1:A:956:LYS:O	1:A:960:THR:HG23	2.13	0.48
3:B:11:ILE:HG22	3:B:296:ASN:HD22	1.77	0.48
4:C:381:ARG:HH21	4:C:381:ARG:HB2	1.78	0.48
4:C:393:GLN:O	4:C:397:VAL:HG23	2.13	0.48
1:A:1299:ASN:ND2	1:A:1299:ASN:H	2.12	0.48
4:C:222:LEU:HD21	4:C:363:LEU:HD11	1.95	0.48
1:A:770:ARG:HG3	1:A:774:CYS:HB2	1.95	0.48
2:E:402:ASN:N	2:E:403:PRO:HD3	2.29	0.48
4:D:325:ILE:HG13	4:D:326:TYR:CD2	2.49	0.48
4:D:393:GLN:O	4:D:397:VAL:HG23	2.13	0.48
4:D:242:ASP:OD2	4:D:242:ASP:N	2.37	0.47
4:D:347:MET:HG2	4:D:351:SER:HB2	1.95	0.47
4:D:228:LEU:HD21	4:D:367:LEU:HB2	1.95	0.47
2:F:323:GLU:O	2:F:327:ILE:HG23	2.15	0.47
2:E:367:GLY:HA3	2:E:371:GLN:HG3	1.97	0.47
4:C:245:ILE:HG12	4:C:390:THR:HG23	1.97	0.47
4:C:266:SER:O	4:C:275:GLN:NE2	2.36	0.47
2:E:325:ASN:HA	2:E:328:LYS:HE2	1.97	0.47
1:A:1214:LEU:HD11	1:A:1221:HIS:CE1	2.50	0.47
1:A:1286:TYR:O	1:A:1290:VAL:HG12	2.15	0.47
2:E:417:CYS:HA	2:E:446:PRO:O	2.14	0.47
1:A:811:GLU:OE2	3:B:315:MET:N	2.33	0.47
1:A:1144:ILE:HG12	1:A:1256:LEU:HD21	1.97	0.47
1:A:1325:LYS:HD2	1:A:1325:LYS:HA	1.63	0.47
1:A:831:LEU:O	1:A:834:ILE:HG13	2.15	0.47
1:A:945:THR:O	1:A:949:ILE:HG12	2.14	0.47
2:E:339:LEU:HB3	4:C:288:TYR:CE2	2.50	0.47
4:D:232:LEU:HD21	4:D:333:ARG:HG2	1.96	0.47
1:A:665:GLU:OE1	1:A:665:GLU:N	2.48	0.46
1:A:825:LEU:HD11	1:A:906:ARG:HH22	1.78	0.46
2:E:470:SER:O	2:E:470:SER:OG	2.17	0.46
3:B:247:TYR:CD2	3:B:286:LEU:HD11	2.50	0.46
4:C:253:THR:OG1	4:C:254:VAL:N	2.46	0.46

Continued on next page...

Continued from previous page...

Atom-1	Atom-2	Interatomic distance (Å)	Clash overlap (Å)
4:D:348:ASP:OD2	4:D:351:SER:OG	2.30	0.46
1:A:957:VAL:HG21	2:E:414:PHE:HD2	1.80	0.46
1:A:1003:SER:O	1:A:1007:LYS:HG3	2.16	0.46
1:A:779:ASN:ND2	3:B:195:GLU:O	2.49	0.46
1:A:823:SER:O	1:A:827:THR:HG23	2.14	0.46
3:B:183:ILE:HB	3:B:269:LEU:HD13	1.96	0.46
4:C:255:GLU:HA	4:C:286:LYS:HE2	1.96	0.46
4:D:391:SER:OG	4:D:392:SER:N	2.49	0.46
1:A:696:ILE:O	2:E:474:VAL:HG11	2.14	0.46
2:E:452:VAL:HG21	2:E:464:TRP:CZ2	2.47	0.46
4:C:297:LEU:HD13	4:C:334:LEU:HB2	1.97	0.46
1:A:690:ASN:ND2	1:A:694:GLN:OE1	2.48	0.46
1:A:900:GLN:O	1:A:903:GLU:HG3	2.16	0.46
2:E:288:ASP:HB2	2:E:348:PRO:HG3	1.96	0.46
2:E:514:TYR:CD1	2:E:516:ASN:HB3	2.51	0.46
1:A:1009:ARG:NE	1:A:1075:GLN:HE22	2.13	0.46
1:A:817:TYR:HE2	2:E:111:THR:HG21	1.81	0.46
1:A:1147:PHE:HE2	1:A:1253:ALA:HB2	1.80	0.46
4:C:244:LYS:HE2	4:C:379:PRO:HG2	1.98	0.46
1:A:1148:PHE:O	1:A:1152:THR:OG1	2.34	0.45
3:B:256:LYS:O	3:B:260:GLU:HB2	2.15	0.45
4:C:269:LEU:HD23	4:C:270:GLU:H	1.81	0.45
4:C:290:ASP:OD1	4:C:323:ILE:HG23	2.16	0.45
3:B:220:GLU:HG2	3:B:221:LEU:H	1.81	0.45
4:D:297:LEU:HD21	4:D:334:LEU:HB2	1.98	0.45
1:A:853:PRO:HA	1:A:884:HIS:CE1	2.50	0.45
1:A:995:PHE:CE1	1:A:1247:GLN:HA	2.51	0.45
2:E:300:ASP:HB3	2:E:302:HIS:HE1	1.82	0.45
3:B:246:THR:O	3:B:250:VAL:HG23	2.17	0.45
3:B:343:TYR:HB3	3:B:346:TYR:CD2	2.51	0.45
2:E:574:ILE:O	2:E:578:VAL:HG23	2.16	0.45
3:B:34:TYR:HD2	3:B:38:HIS:HD2	1.64	0.45
3:B:134:LEU:HD11	3:B:306:MET:HB2	1.99	0.45
1:A:917:ARG:HD3	3:B:351:TYR:OH	2.16	0.45
2:E:169:THR:OG1	3:B:342:GLU:OE2	2.20	0.45
4:D:326:TYR:HD1	4:D:330:HIS:CE1	2.34	0.45
1:A:1120:LEU:HD21	1:A:1338:VAL:HB	1.99	0.45
2:E:398:LEU:HD23	2:E:457:PHE:HD1	1.81	0.45
2:E:437:ILE:HG12	2:E:448:HIS:CD2	2.51	0.45
2:E:520:ILE:HD12	2:E:542:ILE:HG21	1.98	0.45
3:B:151:HIS:HB3	3:B:158:SER:O	2.16	0.45

Continued on next page...

Continued from previous page...

Atom-1	Atom-2	Interatomic distance (Å)	Clash overlap (Å)
1:A:1264:GLU:O	1:A:1268:LEU:HG	2.17	0.45
2:E:320:LYS:HB2	2:E:320:LYS:HE3	1.76	0.45
3:B:279:ASP:CG	3:B:280:ARG:H	2.20	0.45
4:C:381:ARG:NH2	4:C:381:ARG:HB2	2.31	0.45
4:D:285:LEU:HD23	4:D:285:LEU:HA	1.74	0.45
1:A:1063:MET:HB3	1:A:1064:SER:H	1.54	0.45
2:E:317:ALA:HA	2:E:320:LYS:HE2	1.99	0.45
2:E:351:PHE:HE2	4:C:337:VAL:HB	1.82	0.45
2:E:429:SER:O	2:E:430:HIS:ND1	2.50	0.45
1:A:1009:ARG:HE	1:A:1074:TYR:HD1	1.63	0.44
1:A:1280:ALA:O	1:A:1284:ILE:HG13	2.17	0.44
2:E:287:LEU:HD23	2:E:287:LEU:HA	1.78	0.44
4:D:231:VAL:HA	4:D:234:ASP:OD2	2.17	0.44
1:A:1069:LEU:HD13	1:A:1069:LEU:HA	1.88	0.44
2:E:478:ILE:H	2:E:489:TYR:HA	1.81	0.44
2:F:355:ASN:O	2:F:359:GLU:HG2	2.17	0.44
3:B:41:LYS:O	3:B:44:ARG:NE	2.50	0.44
4:C:277:GLN:HB3	4:C:358:GLN:HE22	1.81	0.44
3:B:52:ILE:O	3:B:57:LEU:HB2	2.18	0.44
1:A:1300:MET:HE2	1:A:1317:ILE:HG21	1.98	0.44
3:B:78:HIS:HD1	3:B:82:TYR:HD1	1.65	0.44
2:E:562:GLN:HA	2:E:565:LYS:HE2	1.99	0.44
4:D:284:GLY:HA3	2:F:336:PHE:CD2	2.52	0.44
2:E:255:ILE:HG13	2:E:255:ILE:O	2.18	0.44
1:A:1183:ASP:OD1	1:A:1184:LEU:N	2.51	0.44
2:E:372:TYR:CE1	4:C:237:GLU:HB2	2.52	0.44
2:E:565:LYS:HE2	2:E:565:LYS:HB3	1.68	0.44
3:B:18:LYS:HD2	3:B:18:LYS:HA	1.84	0.44
3:B:80:ASP:OD2	3:B:80:ASP:N	2.49	0.44
4:C:338:LEU:HA	4:C:341:LEU:HD12	2.00	0.44
1:A:1020:LEU:HG	1:A:1273:ARG:HG2	2.00	0.44
3:B:14:LYS:NZ	3:B:300:SER:OG	2.47	0.44
3:B:150:HIS:HB3	3:B:166:ILE:HD12	2.00	0.44
3:B:377:PHE:O	3:B:381:GLU:HG2	2.18	0.44
2:F:284:PHE:CD2	2:F:293:PRO:HB3	2.53	0.44
2:F:305:GLU:O	2:F:309:LYS:HG2	2.18	0.44
3:B:30:GLY:O	3:B:46:ARG:NH2	2.50	0.43
3:B:182:TYR:CE1	3:B:184:ASP:HB2	2.53	0.43
1:A:979:PHE:HD1	1:A:985:PHE:HZ	1.66	0.43
1:A:1225:GLU:O	1:A:1229:ARG:HG3	2.18	0.43
2:E:272:PHE:HB3	2:E:281:SER:HB3	2.00	0.43

Continued on next page...

Continued from previous page...

Atom-1	Atom-2	Interatomic distance (Å)	Clash overlap (Å)
2:E:554:LYS:HA	2:E:557:LYS:HE3	2.00	0.43
2:E:569:PHE:O	2:E:573:LEU:HG	2.18	0.43
4:D:335:ILE:HD12	4:D:359:THR:HG23	1.99	0.43
1:A:996:ILE:HA	1:A:999:THR:HG22	2.00	0.43
3:B:165:ASP:HA	3:B:168:LEU:HD12	2.00	0.43
1:A:690:ASN:CG	2:E:520:ILE:HD13	2.39	0.43
1:A:959:GLN:NE2	1:A:971:PRO:HB2	2.33	0.43
2:E:324:SER:HA	2:E:327:ILE:HD12	2.00	0.43
3:B:24:PHE:HZ	3:B:133:ARG:HD3	1.83	0.43
2:E:378:LYS:O	2:E:379:ILE:HG23	2.18	0.43
2:E:504:LEU:HD12	2:E:538:LYS:HA	2.01	0.43
4:D:329:ILE:HD11	4:D:330:HIS:CE1	2.53	0.43
2:F:557:LYS:HB2	2:F:557:LYS:HE3	1.84	0.43
1:A:867:ILE:O	1:A:871:TYR:HB2	2.19	0.43
1:A:877:PHE:O	1:A:880:ILE:HG22	2.19	0.43
1:A:1066:LEU:HB2	1:A:1270:VAL:HG11	1.99	0.43
3:B:92:ASP:OD1	3:B:92:ASP:N	2.52	0.43
4:D:258:LEU:HD23	4:D:286:LYS:HG3	2.00	0.43
4:D:293:LEU:HD11	4:D:326:TYR:CZ	2.52	0.43
1:A:696:ILE:HD11	2:E:517:ASN:O	2.18	0.43
1:A:1204:TYR:CE1	1:A:1208:LEU:HD11	2.54	0.43
1:A:1302:ARG:NH1	1:A:1315:GLN:OE1	2.51	0.43
1:A:1337:TYR:HD2	1:A:1337:TYR:HA	1.71	0.43
2:F:318:THR:O	2:F:322:ILE:HG13	2.19	0.43
1:A:973:SER:OG	1:A:1315:GLN:HB2	2.18	0.43
2:E:323:GLU:OE1	2:E:338:LYS:HG2	2.19	0.43
4:C:254:VAL:HG21	4:C:289:PHE:CZ	2.54	0.43
4:D:262:GLU:O	4:D:266:SER:HB2	2.18	0.43
2:E:512:ILE:HG21	4:D:273:GLY:HA2	2.01	0.43
1:A:688:ILE:HG22	1:A:702:LEU:HD12	2.00	0.42
1:A:992:ALA:O	1:A:996:ILE:HG13	2.19	0.42
1:A:1343:LEU:HB3	1:A:1345:HIS:ND1	2.34	0.42
2:E:166:ASP:N	2:E:166:ASP:OD1	2.52	0.42
4:D:232:LEU:HD13	2:F:353:LEU:HD13	2.01	0.42
4:D:331:LEU:HD22	4:D:331:LEU:HA	1.87	0.42
1:A:853:PRO:HA	1:A:884:HIS:HE1	1.84	0.42
1:A:1019:SER:O	1:A:1024:ILE:N	2.50	0.42
1:A:1194:MET:HG3	1:A:1196:LEU:HG	2.00	0.42
3:B:292:ALA:HB1	3:B:328:LEU:HD21	2.02	0.42
1:A:938:ALA:HA	1:A:941:LYS:HE2	2.02	0.42
1:A:1338:VAL:HA	1:A:1341:TYR:CD1	2.54	0.42

Continued on next page...

Continued from previous page...

Atom-1	Atom-2	Interatomic distance (Å)	Clash overlap (Å)
4:C:248:LEU:HD11	4:C:326:TYR:CZ	2.54	0.42
2:F:273:LEU:HD23	2:F:284:PHE:CD1	2.54	0.42
2:E:333:VAL:HA	4:C:280:GLU:HG3	2.01	0.42
2:E:498:ILE:HD13	4:C:226:ILE:HG21	2.01	0.42
1:A:981:ASP:OD2	1:A:984:ILE:HG13	2.19	0.42
1:A:1226:GLU:O	1:A:1230:GLN:HG3	2.18	0.42
3:B:26:ASP:HB3	3:B:29:VAL:HG23	2.01	0.42
2:E:493:LYS:HD2	2:E:493:LYS:HA	1.85	0.42
2:E:553:ASP:O	2:E:557:LYS:HG2	2.20	0.42
2:E:568:GLN:O	2:E:571:GLU:HG3	2.19	0.42
4:D:335:ILE:HD13	4:D:335:ILE:HA	1.83	0.42
2:F:355:ASN:HA	2:F:358:LYS:HE2	2.01	0.42
1:A:1003:SER:OG	1:A:1005:PRO:HD2	2.20	0.42
2:E:292:ASP:OD2	2:E:294:ASN:ND2	2.53	0.42
2:E:336:PHE:CE1	2:E:339:LEU:HD12	2.54	0.42
4:D:248:LEU:HD23	4:D:309:LEU:HD22	2.01	0.42
2:F:322:ILE:HA	2:F:325:ASN:HD21	1.85	0.42
4:D:300:ARG:HG3	4:D:303:ARG:NH2	2.34	0.42
1:A:837:LYS:HD2	1:A:840:ASN:HD21	1.84	0.42
2:F:263:CYS:HA	2:F:281:SER:O	2.20	0.42
4:C:262:GLU:O	4:C:266:SER:HB3	2.19	0.42
2:F:292:ASP:OD2	2:F:293:PRO:HD2	2.20	0.42
2:E:292:ASP:HB3	2:E:295:ASN:OD1	2.20	0.41
1:A:949:ILE:O	1:A:953:SER:OG	2.36	0.41
1:A:1129:ILE:O	1:A:1129:ILE:HG13	2.18	0.41
1:A:1137:ASN:HB2	1:A:1283:GLN:HE22	1.85	0.41
1:A:1199:VAL:O	1:A:1201:GLU:N	2.52	0.41
2:E:454:ARG:NH1	2:E:458:LYS:HB2	2.35	0.41
2:E:510:GLN:HG3	4:D:354:LEU:HD22	2.02	0.41
3:B:316:ARG:H	3:B:316:ARG:HG3	1.68	0.41
1:A:936:LYS:HE3	1:A:1225:GLU:OE2	2.20	0.41
3:B:30:GLY:C	3:B:46:ARG:HH21	2.22	0.41
3:B:198:TYR:CE2	3:B:225:GLY:HA2	2.55	0.41
3:B:271:CYS:SG	3:B:307:VAL:HG13	2.60	0.41
1:A:872:ASP:O	1:A:874:GLU:N	2.54	0.41
1:A:1318:ALA:HB3	1:A:1321:ASP:HB2	2.01	0.41
3:B:197:PHE:CD1	3:B:203:VAL:HG21	2.55	0.41
1:A:875:ARG:HA	1:A:878:GLU:OE1	2.20	0.41
1:A:955:ILE:HG23	1:A:974:GLN:HG3	2.02	0.41
1:A:959:GLN:O	1:A:963:LYS:HB2	2.20	0.41
2:E:184:THR:OG1	2:E:184:THR:O	2.37	0.41

Continued on next page...

Continued from previous page...

Atom-1	Atom-2	Interatomic distance (Å)	Clash overlap (Å)
2:E:351:PHE:CE1	4:C:333:ARG:HB3	2.56	0.41
2:E:381:LEU:HD23	2:E:384:ARG:HG3	2.03	0.41
1:A:1018:ILE:O	1:A:1022:PHE:HD2	2.04	0.41
1:A:1261:LYS:O	1:A:1265:ILE:HG13	2.21	0.41
2:E:296:LEU:HD12	2:E:297:PRO:HD2	2.01	0.41
2:E:409:SER:OG	2:E:410:ASN:N	2.52	0.41
3:B:239:ARG:H	3:B:364:ASN:HD21	1.68	0.41
4:D:269:LEU:HD23	4:D:269:LEU:HA	1.82	0.41
1:A:830:CYS:SG	1:A:831:LEU:N	2.94	0.41
1:A:1234:ASN:O	3:B:359:ASN:ND2	2.45	0.41
1:A:1284:ILE:HD11	1:A:1336:TYR:CE2	2.56	0.41
1:A:680:HIS:O	1:A:684:GLU:HG2	2.21	0.41
1:A:928:LEU:HD12	1:A:928:LEU:HA	1.88	0.41
1:A:1284:ILE:HD11	1:A:1336:TYR:HE2	1.85	0.41
1:A:1324:LEU:HD12	1:A:1325:LYS:H	1.86	0.41
3:B:34:TYR:CD2	3:B:38:HIS:HD2	2.39	0.41
3:B:106:VAL:HG13	3:B:110:CYS:O	2.21	0.41
4:C:232:LEU:HD23	4:C:232:LEU:HA	1.96	0.41
4:D:287:LEU:HD13	4:D:287:LEU:HA	1.92	0.41
2:F:364:VAL:O	2:F:365:LYS:HD2	2.21	0.41
1:A:750:ALA:HB3	4:C:380:ASN:HD21	1.85	0.41
1:A:770:ARG:HH12	3:B:154:LYS:HD2	1.86	0.41
1:A:790:SER:O	1:A:790:SER:OG	2.35	0.41
1:A:1233:ASN:HB3	1:A:1235:LYS:HB2	2.03	0.41
3:B:57:LEU:HA	3:B:57:LEU:HD23	1.85	0.41
4:D:265:VAL:CG2	4:D:278:LEU:HD11	2.42	0.41
4:C:318:LYS:HG3	4:C:318:LYS:O	2.21	0.40
2:F:259:ASN:ND2	2:F:274:CYS:SG	2.94	0.40
2:E:336:PHE:CZ	4:C:285:LEU:HD23	2.55	0.40
4:C:257:VAL:HG22	4:C:373:TYR:CZ	2.56	0.40
2:F:326:PHE:CD1	2:F:341:PHE:HB2	2.57	0.40
1:A:1161:ILE:HD13	1:A:1239:LEU:CD2	2.52	0.40
2:E:478:ILE:N	2:E:489:TYR:HA	2.36	0.40
2:F:568:GLN:HA	2:F:571:GLU:OE1	2.22	0.40
1:A:679:LYS:HA	1:A:679:LYS:HD3	1.86	0.40
1:A:841:MET:HB3	1:A:845:GLU:HB2	2.04	0.40
1:A:862:ILE:HD13	1:A:862:ILE:HA	1.90	0.40
1:A:979:PHE:CD1	1:A:985:PHE:HZ	2.40	0.40
1:A:1242:ILE:HD12	1:A:1242:ILE:HA	1.96	0.40
1:A:1343:LEU:HG	1:A:1344:PRO:HD2	2.02	0.40
2:E:275:CYS:SG	2:E:276:ASP:N	2.95	0.40

Continued on next page...

Continued from previous page...

Atom-1	Atom-2	Interatomic distance (Å)	Clash overlap (Å)
2:F:349:LYS:HB2	2:F:349:LYS:HE3	1.83	0.40

There are no symmetry-related clashes.

5.3 Torsion angles [i](#)

5.3.1 Protein backbone [i](#)

In the following table, the Percentiles column shows the percent Ramachandran outliers of the chain as a percentile score with respect to all PDB entries followed by that with respect to all EM entries.

The Analysed column shows the number of residues for which the backbone conformation was analysed, and the total number of residues.

Mol	Chain	Analysed	Favoured	Allowed	Outliers	Percentiles	
1	A	598/1536 (39%)	568 (95%)	29 (5%)	1 (0%)	47	77
2	E	343/684 (50%)	293 (85%)	48 (14%)	2 (1%)	25	57
2	F	152/684 (22%)	151 (99%)	1 (1%)	0	100	100
3	B	383/433 (88%)	365 (95%)	18 (5%)	0	100	100
4	C	181/401 (45%)	171 (94%)	9 (5%)	1 (1%)	25	57
4	D	183/401 (46%)	175 (96%)	8 (4%)	0	100	100
All	All	1840/4139 (44%)	1723 (94%)	113 (6%)	4 (0%)	50	77

All (4) Ramachandran outliers are listed below:

Mol	Chain	Res	Type
2	E	517	ASN
4	C	241	LYS
1	A	873	LYS
2	E	518	GLY

5.3.2 Protein sidechains [i](#)

In the following table, the Percentiles column shows the percent sidechain outliers of the chain as a percentile score with respect to all PDB entries followed by that with respect to all EM entries.

The Analysed column shows the number of residues for which the sidechain conformation was

analysed, and the total number of residues.

Mol	Chain	Analysed	Rotameric	Outliers	Percentiles	
1	A	560/1391 (40%)	522 (93%)	38 (7%)	16	44
2	E	332/653 (51%)	303 (91%)	29 (9%)	10	34
2	F	148/653 (23%)	138 (93%)	10 (7%)	16	44
3	B	326/367 (89%)	306 (94%)	20 (6%)	18	48
4	C	172/359 (48%)	154 (90%)	18 (10%)	7	25
4	D	174/359 (48%)	167 (96%)	7 (4%)	31	61
All	All	1712/3782 (45%)	1590 (93%)	122 (7%)	18	42

All (122) residues with a non-rotameric sidechain are listed below:

Mol	Chain	Res	Type
1	A	690	ASN
1	A	779	ASN
1	A	799	ARG
1	A	815	HIS
1	A	831	LEU
1	A	836	ASN
1	A	871	TYR
1	A	907	ARG
1	A	912	TRP
1	A	922	LYS
1	A	940	LYS
1	A	953	SER
1	A	972	LYS
1	A	1009	ARG
1	A	1021	PHE
1	A	1071	ARG
1	A	1134	SER
1	A	1142	THR
1	A	1149	ARG
1	A	1150	HIS
1	A	1152	THR
1	A	1153	THR
1	A	1171	GLU
1	A	1227	SER
1	A	1235	LYS
1	A	1243	ASP
1	A	1249	LEU
1	A	1252	HIS

Continued on next page...

Continued from previous page...

Mol	Chain	Res	Type
1	A	1255	THR
1	A	1256	LEU
1	A	1262	THR
1	A	1286	TYR
1	A	1294	MET
1	A	1297	THR
1	A	1299	ASN
1	A	1314	ILE
1	A	1316	TYR
1	A	1337	TYR
2	E	107	LYS
2	E	115	LEU
2	E	125	ARG
2	E	180	ASN
2	E	187	TRP
2	E	311	PHE
2	E	371	GLN
2	E	375	GLU
2	E	379	ILE
2	E	387	PHE
2	E	388	ASN
2	E	390	SER
2	E	394	SER
2	E	395	ILE
2	E	440	CYS
2	E	441	ASP
2	E	450	ASP
2	E	454	ARG
2	E	462	SER
2	E	466	CYS
2	E	472	THR
2	E	491	VAL
2	E	492	TRP
2	E	514	TYR
2	E	519	ASN
2	E	543	ASP
2	E	549	TYR
2	E	554	LYS
2	E	569	PHE
3	B	11	ILE
3	B	14	LYS
3	B	20	ARG

Continued on next page...

Continued from previous page...

Mol	Chain	Res	Type
3	B	41	LYS
3	B	52	ILE
3	B	90	THR
3	B	92	ASP
3	B	113	PHE
3	B	114	ASP
3	B	134	LEU
3	B	139	CYS
3	B	158	SER
3	B	170	ILE
3	B	191	ASP
3	B	201	ASP
3	B	242	ILE
3	B	244	ASP
3	B	254	VAL
3	B	333	VAL
3	B	340	TYR
4	C	222	LEU
4	C	230	SER
4	C	235	ASP
4	C	240	THR
4	C	241	LYS
4	C	253	THR
4	C	285	LEU
4	C	292	CYS
4	C	304	LEU
4	C	307	ASP
4	C	312	LYS
4	C	332	LEU
4	C	335	ILE
4	C	372	GLU
4	C	380	ASN
4	C	386	LEU
4	C	390	THR
4	C	392	SER
4	D	279	SER
4	D	282	CYS
4	D	288	TYR
4	D	290	ASP
4	D	331	LEU
4	D	350	GLN
4	D	352	CYS

Continued on next page...

Continued from previous page...

Mol	Chain	Res	Type
2	F	275	CYS
2	F	276	ASP
2	F	304	ASN
2	F	311	PHE
2	F	332	ASN
2	F	338	LYS
2	F	353	LEU
2	F	545	ASN
2	F	560	MET
2	F	564	ARG

Sometimes sidechains can be flipped to improve hydrogen bonding and reduce clashes. All (42) such sidechains are listed below:

Mol	Chain	Res	Type
1	A	690	ASN
1	A	694	GLN
1	A	779	ASN
1	A	802	GLN
1	A	1039	ASN
1	A	1247	GLN
1	A	1293	HIS
1	A	1299	ASN
2	E	174	ASN
2	E	346	HIS
2	E	352	GLN
2	E	376	ASN
2	E	388	ASN
2	E	402	ASN
2	E	433	ASN
2	E	459	ASN
2	E	495	GLN
2	E	516	ASN
2	E	521	GLN
2	E	541	GLN
2	E	580	ASN
3	B	150	HIS
3	B	188	HIS
3	B	235	ASN
3	B	293	ASN
3	B	330	ASN
3	B	364	ASN
4	C	295	ASN

Continued on next page...

Continued from previous page...

Mol	Chain	Res	Type
4	C	305	GLN
4	C	353	GLN
4	C	358	GLN
4	D	305	GLN
4	D	330	HIS
4	D	350	GLN
4	D	375	ASN
4	D	380	ASN
2	F	259	ASN
2	F	268	GLN
2	F	302	HIS
2	F	346	HIS
2	F	350	GLN
2	F	355	ASN

5.3.3 RNA [i](#)

There are no RNA molecules in this entry.

5.4 Non-standard residues in protein, DNA, RNA chains [i](#)

There are no non-standard protein/DNA/RNA residues in this entry.

5.5 Carbohydrates [i](#)

There are no monosaccharides in this entry.

5.6 Ligand geometry [i](#)

Of 9 ligands modelled in this entry, 9 are monoatomic - leaving 0 for Mogul analysis.

There are no bond length outliers.

There are no bond angle outliers.

There are no chirality outliers.

There are no torsion outliers.

There are no ring outliers.

No monomer is involved in short contacts.

5.7 Other polymers [i](#)

There are no such residues in this entry.

5.8 Polymer linkage issues [i](#)

There are no chain breaks in this entry.

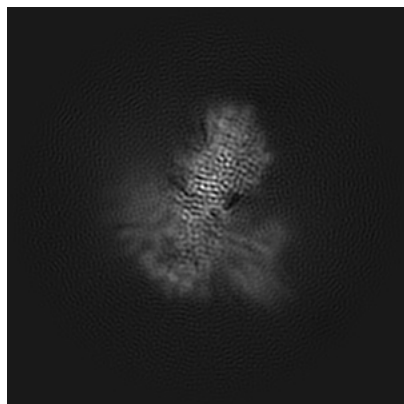
6 Map visualisation [i](#)

This section contains visualisations of the EMDB entry EMD-37364. These allow visual inspection of the internal detail of the map and identification of artifacts.

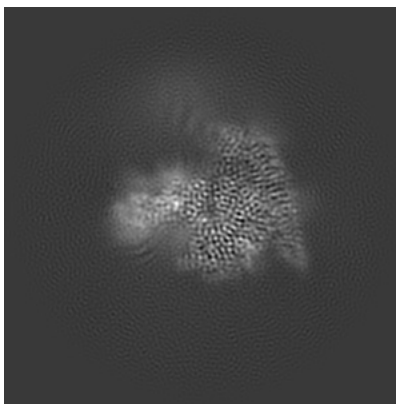
Images derived from a raw map, generated by summing the deposited half-maps, are presented below the corresponding image components of the primary map to allow further visual inspection and comparison with those of the primary map.

6.1 Orthogonal projections [i](#)

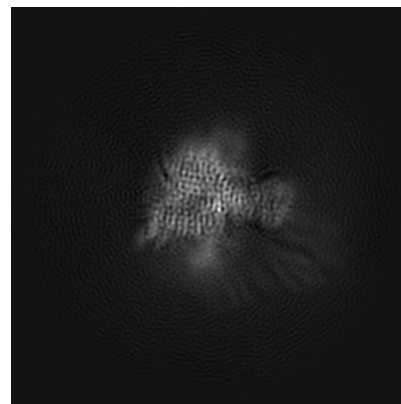
6.1.1 Primary map



X

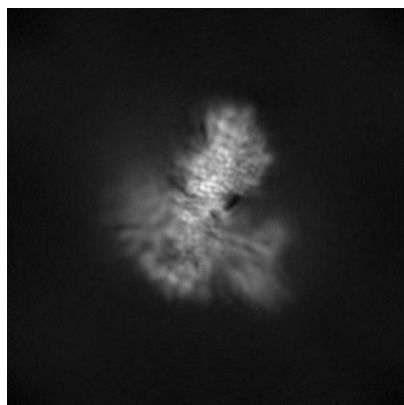


Y

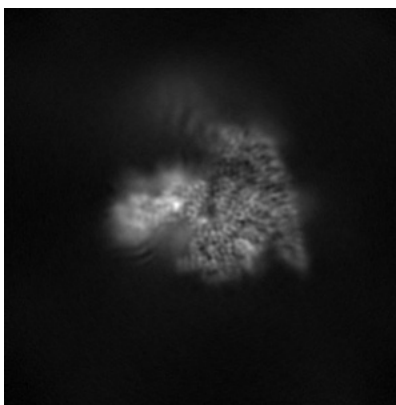


Z

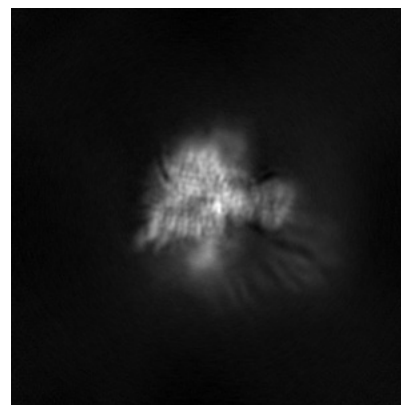
6.1.2 Raw map



X



Y

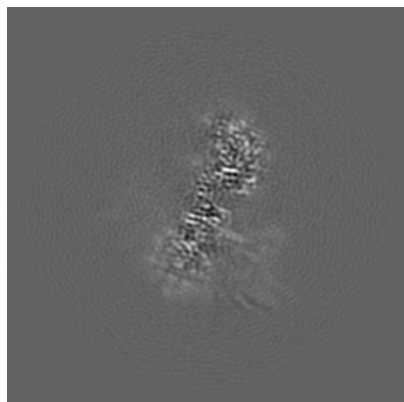


Z

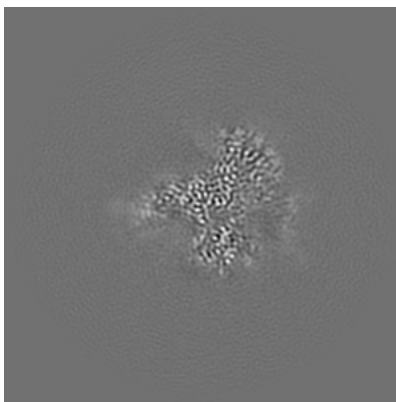
The images above show the map projected in three orthogonal directions.

6.2 Central slices [i](#)

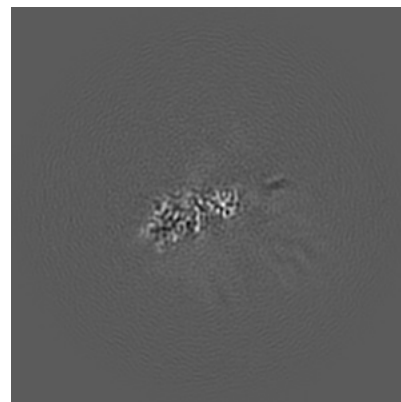
6.2.1 Primary map



X Index: 140

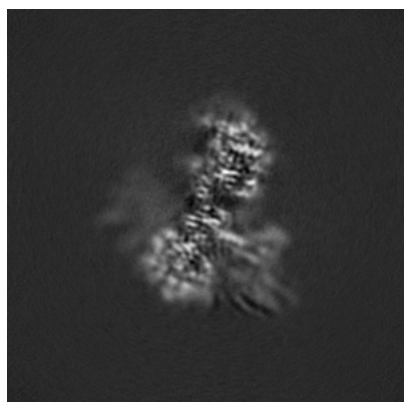


Y Index: 140

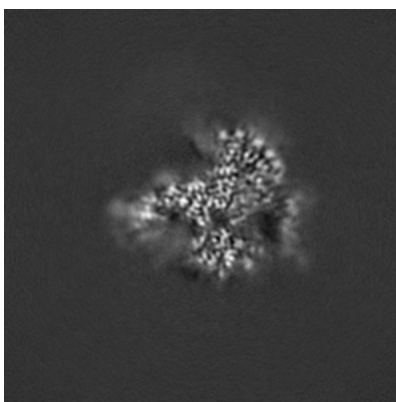


Z Index: 140

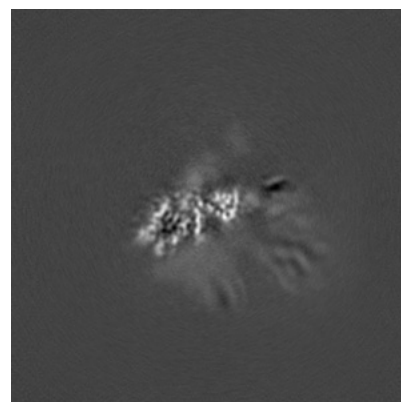
6.2.2 Raw map



X Index: 140



Y Index: 140

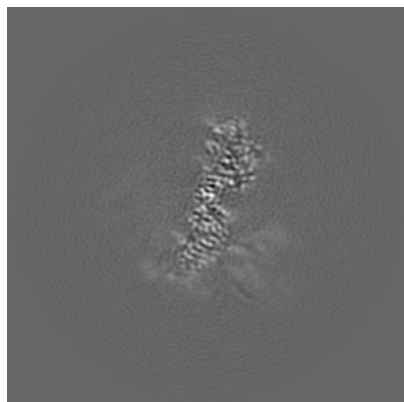


Z Index: 140

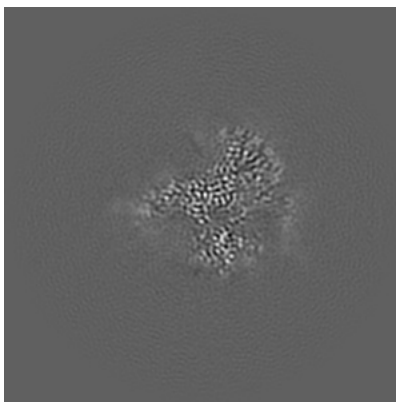
The images above show central slices of the map in three orthogonal directions.

6.3 Largest variance slices [i](#)

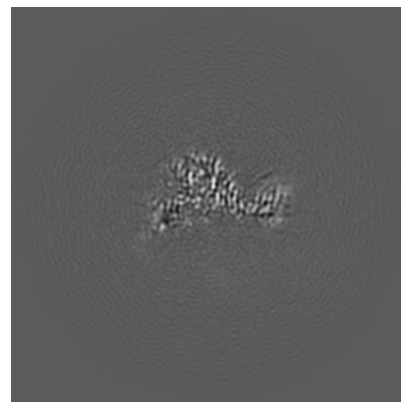
6.3.1 Primary map



X Index: 145

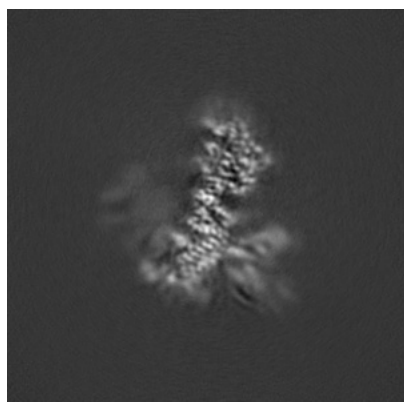


Y Index: 141

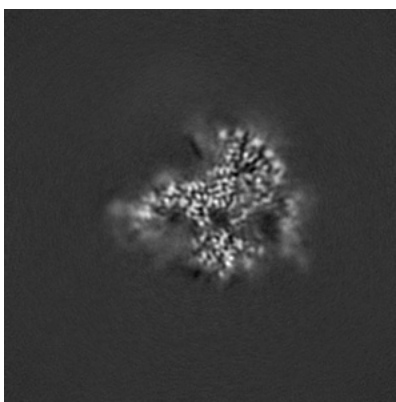


Z Index: 160

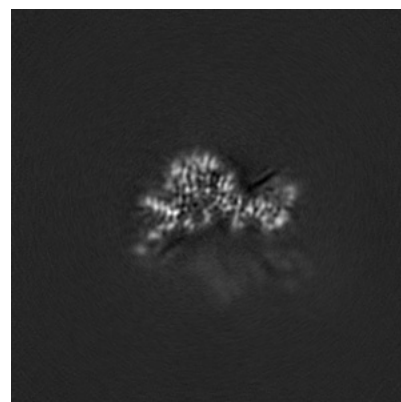
6.3.2 Raw map



X Index: 145



Y Index: 141

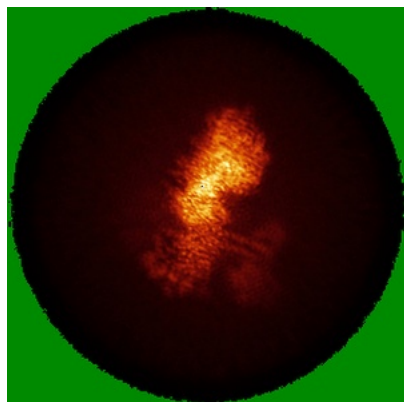


Z Index: 157

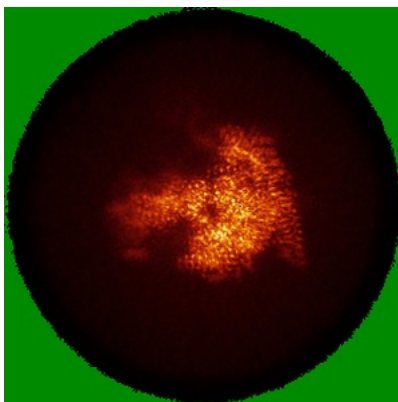
The images above show the largest variance slices of the map in three orthogonal directions.

6.4 Orthogonal standard-deviation projections (False-color) [i](#)

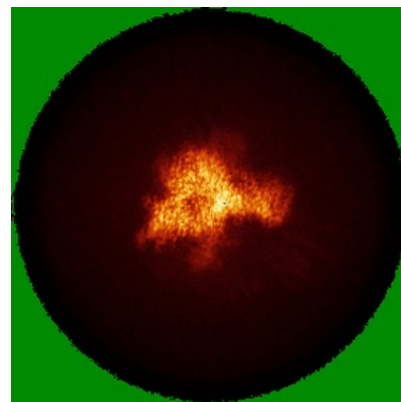
6.4.1 Primary map



X

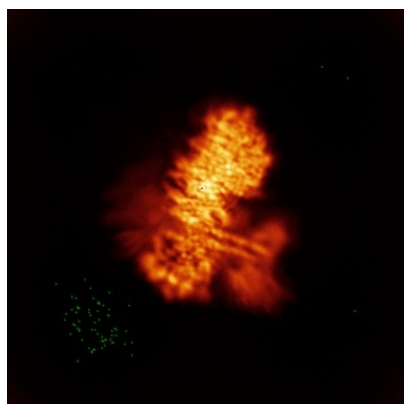


Y

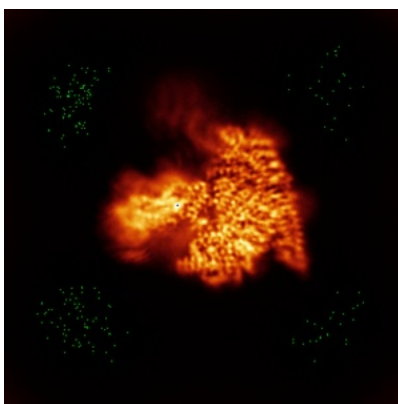


Z

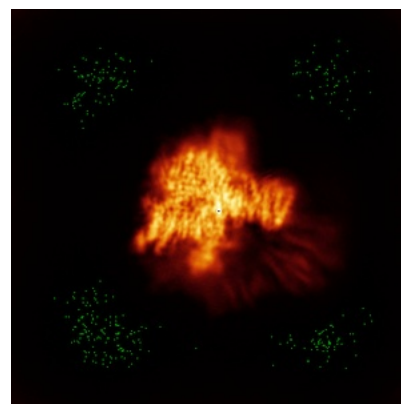
6.4.2 Raw map



X



Y

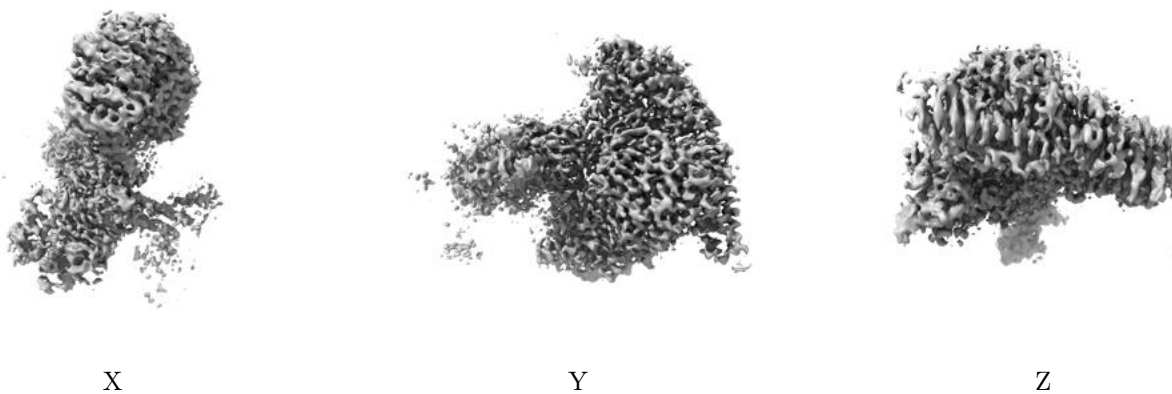


Z

The images above show the map standard deviation projections with false color in three orthogonal directions. Minimum values are shown in green, max in blue, and dark to light orange shades represent small to large values respectively.

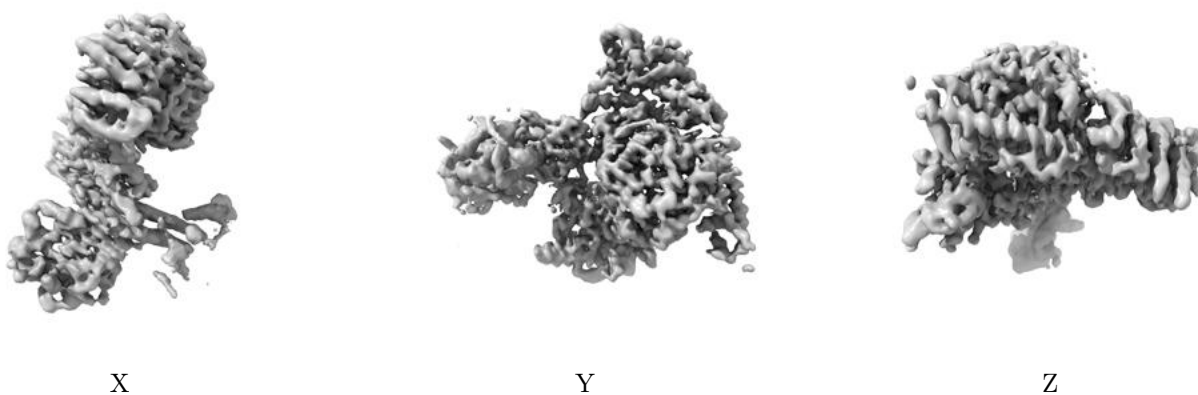
6.5 Orthogonal surface views [i](#)

6.5.1 Primary map



The images above show the 3D surface view of the map at the recommended contour level 0.5. These images, in conjunction with the slice images, may facilitate assessment of whether an appropriate contour level has been provided.

6.5.2 Raw map



These images show the 3D surface of the raw map. The raw map's contour level was selected so that its surface encloses the same volume as the primary map does at its recommended contour level.

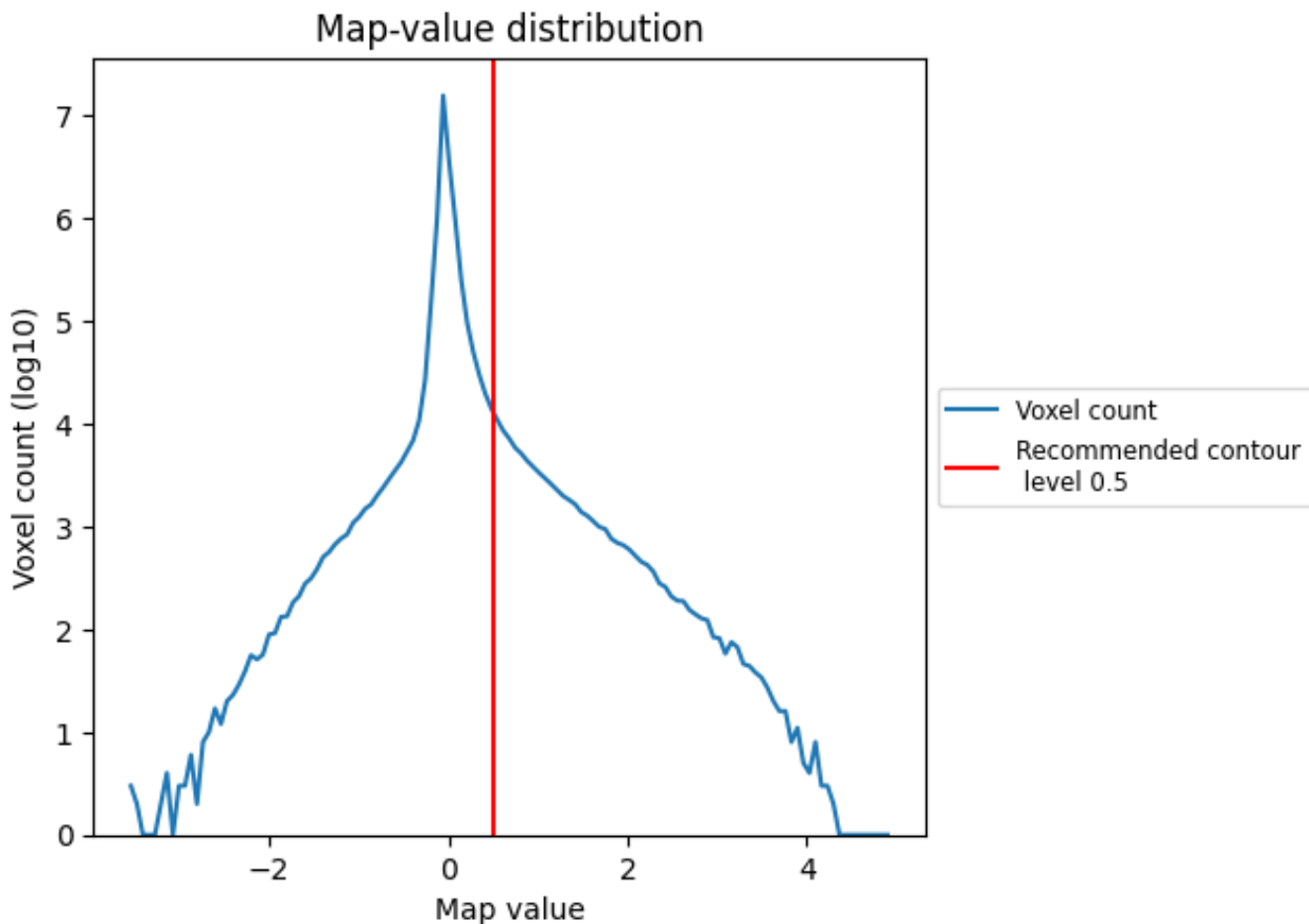
6.6 Mask visualisation [i](#)

This section was not generated. No masks/segmentation were deposited.

7 Map analysis [i](#)

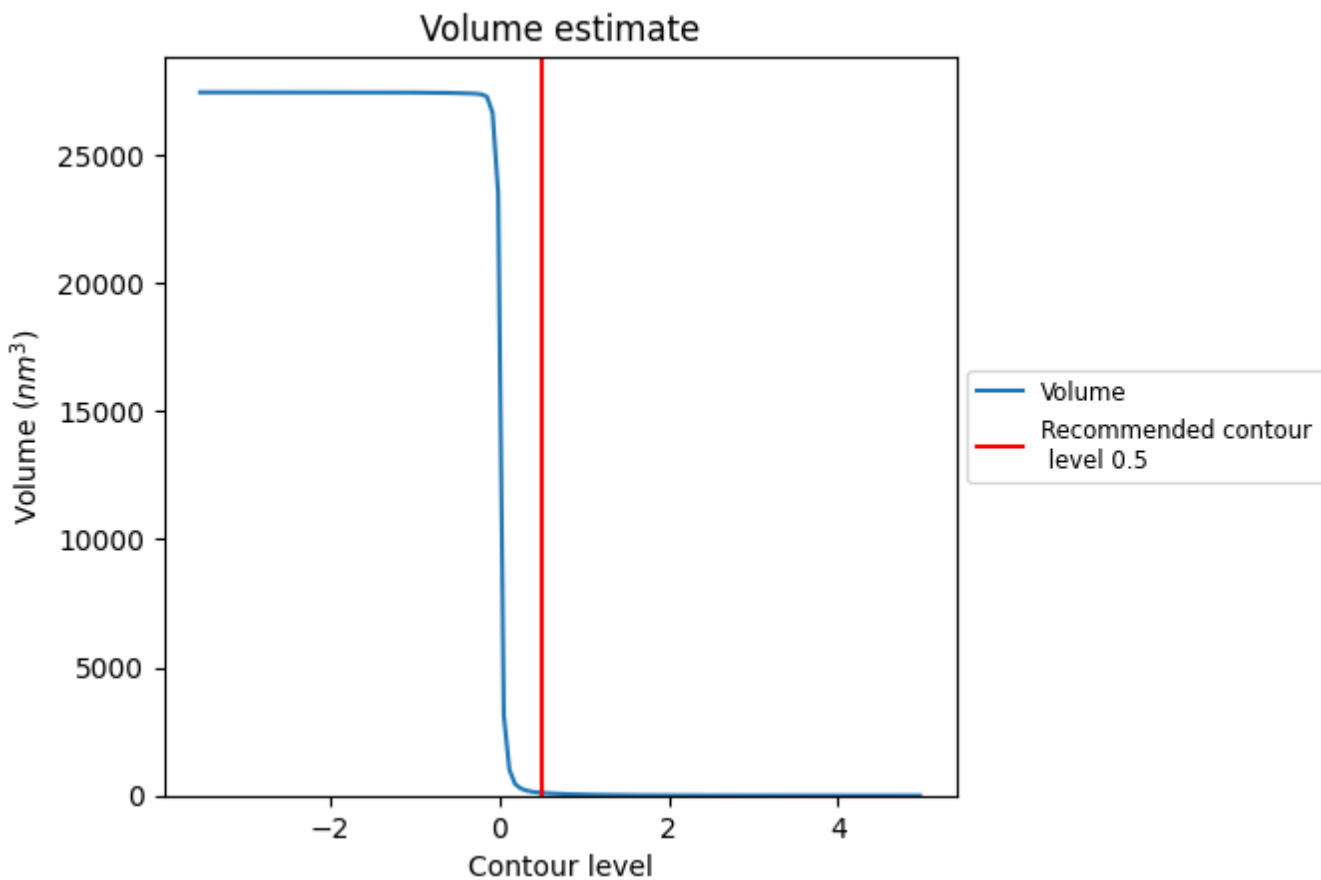
This section contains the results of statistical analysis of the map.

7.1 Map-value distribution [i](#)



The map-value distribution is plotted in 128 intervals along the x-axis. The y-axis is logarithmic. A spike in this graph at zero usually indicates that the volume has been masked.

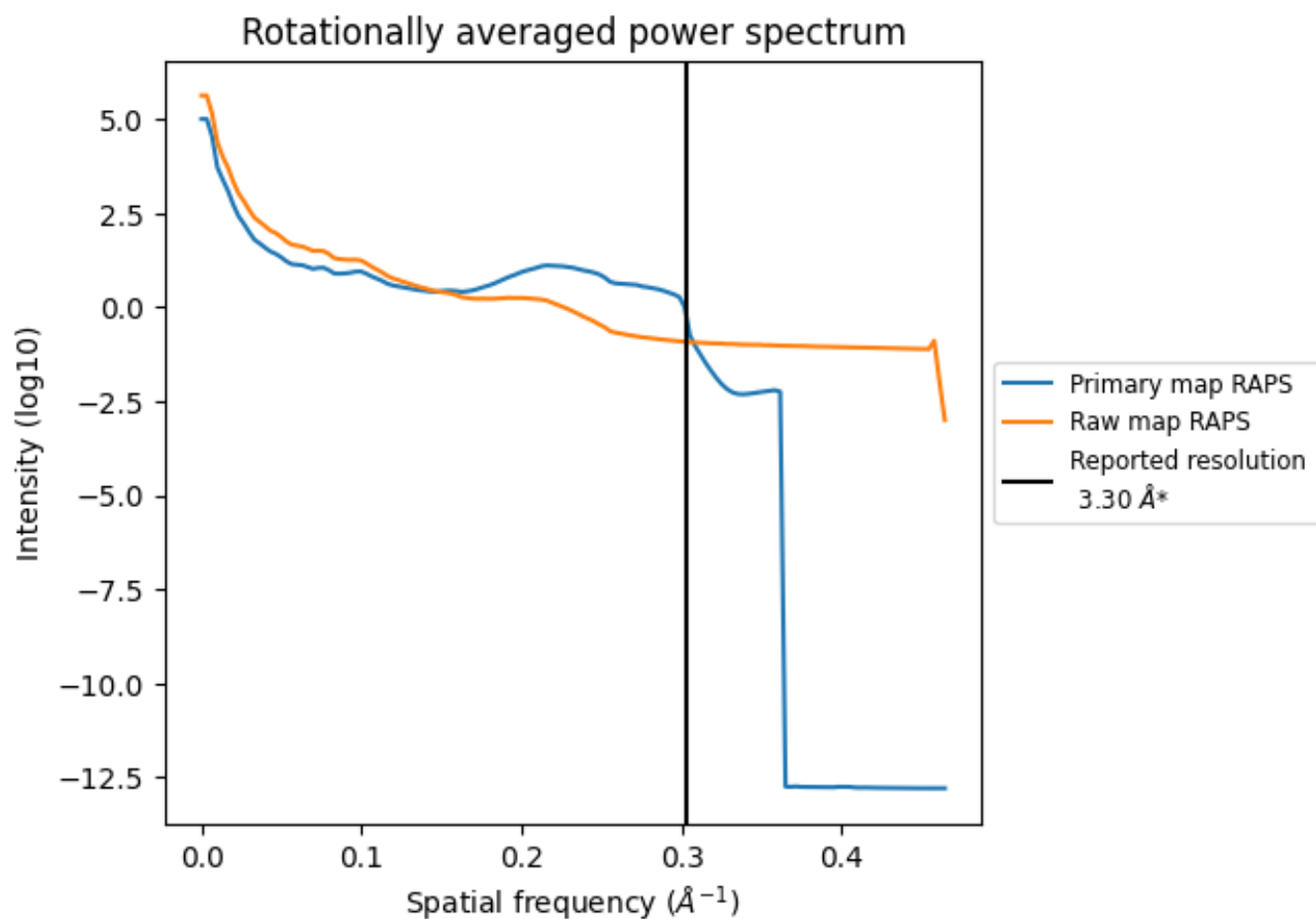
7.2 Volume estimate [i](#)



The volume at the recommended contour level is 106 nm³; this corresponds to an approximate mass of 95 kDa.

The volume estimate graph shows how the enclosed volume varies with the contour level. The recommended contour level is shown as a vertical line and the intersection between the line and the curve gives the volume of the enclosed surface at the given level.

7.3 Rotationally averaged power spectrum [i](#)

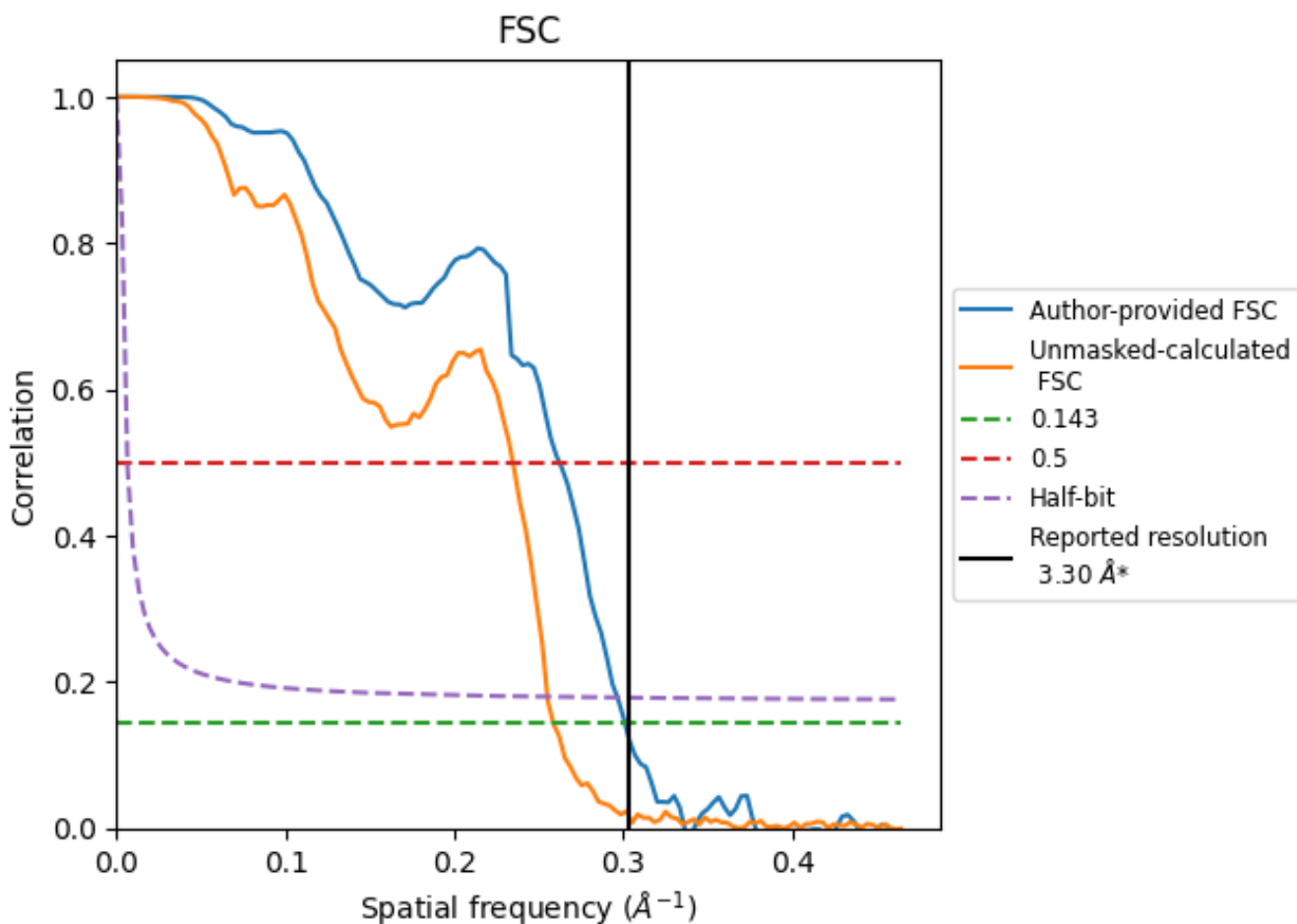


*Reported resolution corresponds to spatial frequency of 0.303 Å⁻¹

8 Fourier-Shell correlation [i](#)

Fourier-Shell Correlation (FSC) is the most commonly used method to estimate the resolution of single-particle and subtomogram-averaged maps. The shape of the curve depends on the imposed symmetry, mask and whether or not the two 3D reconstructions used were processed from a common reference. The reported resolution is shown as a black line. A curve is displayed for the half-bit criterion in addition to lines showing the 0.143 gold standard cut-off and 0.5 cut-off.

8.1 FSC [i](#)



*Reported resolution corresponds to spatial frequency of 0.303 Å⁻¹

8.2 Resolution estimates [i](#)

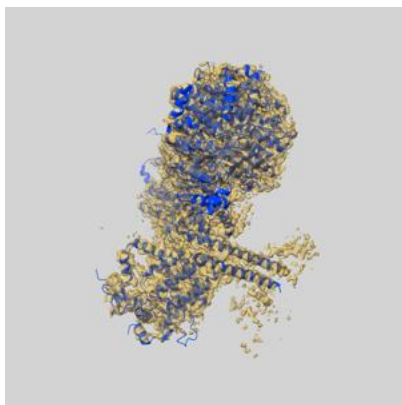
Resolution estimate (Å)	Estimation criterion (FSC cut-off)		
	0.143	0.5	Half-bit
Reported by author	3.30	-	-
Author-provided FSC curve	3.32	3.82	3.37
Unmasked-calculated*	3.87	4.26	3.92

*Resolution estimate based on FSC curve calculated by comparison of deposited half-maps. The value from deposited half-maps intersecting FSC 0.143 CUT-OFF 3.87 differs from the reported value 3.3 by more than 10 %

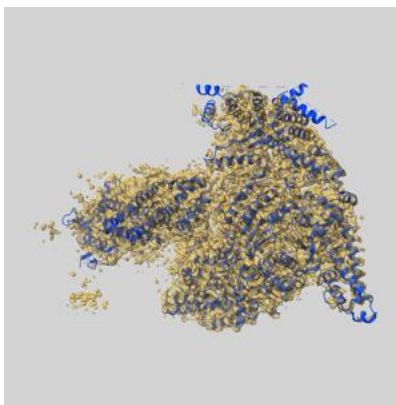
9 Map-model fit [i](#)

This section contains information regarding the fit between EMDB map EMD-37364 and PDB model 8W9C. Per-residue inclusion information can be found in section [3](#) on page [5](#).

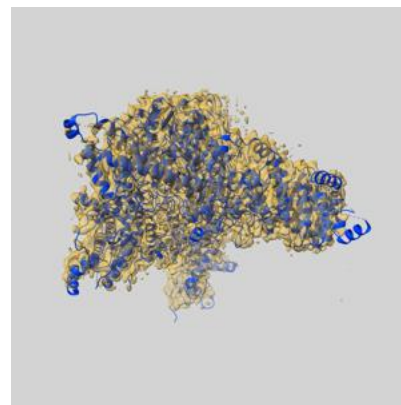
9.1 Map-model overlay [i](#)



X



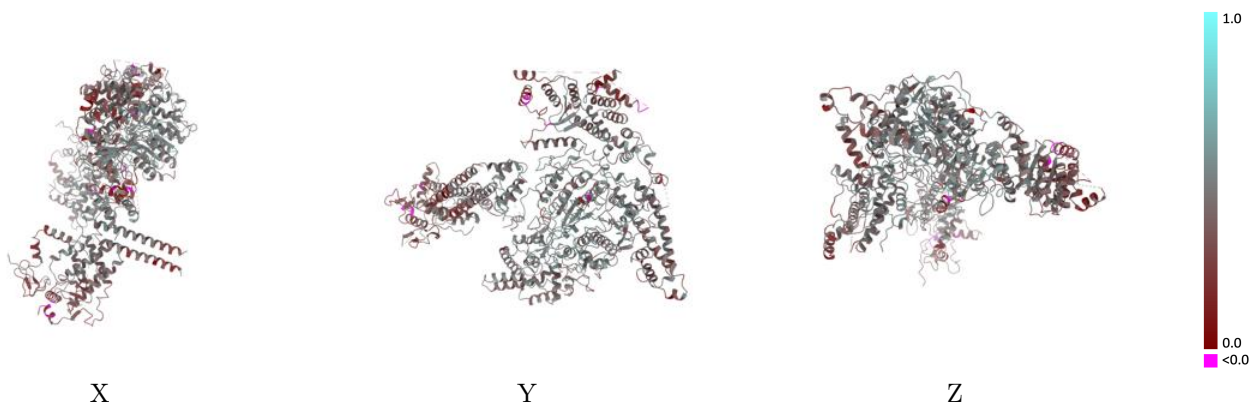
Y



Z

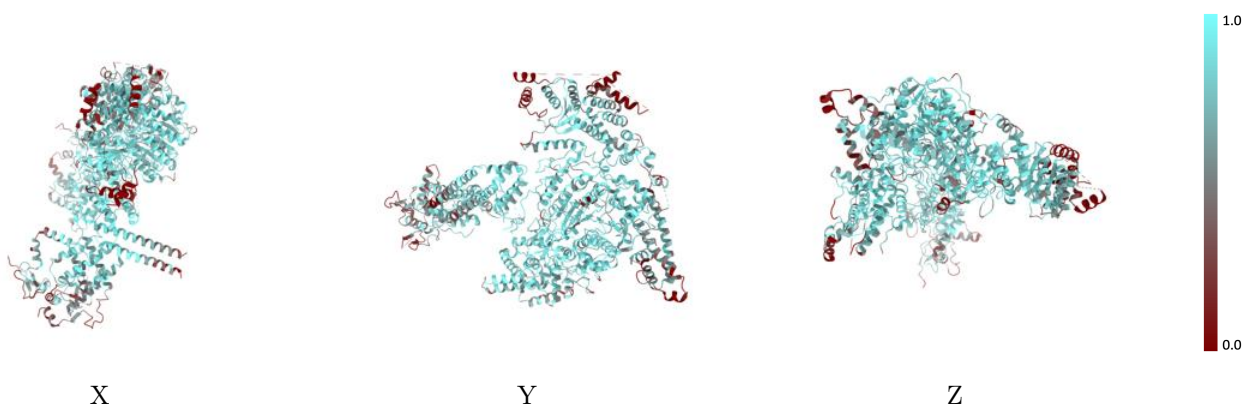
The images above show the 3D surface view of the map at the recommended contour level 0.5 at 50% transparency in yellow overlaid with a ribbon representation of the model coloured in blue. These images allow for the visual assessment of the quality of fit between the atomic model and the map.

9.2 Q-score mapped to coordinate model [\(i\)](#)



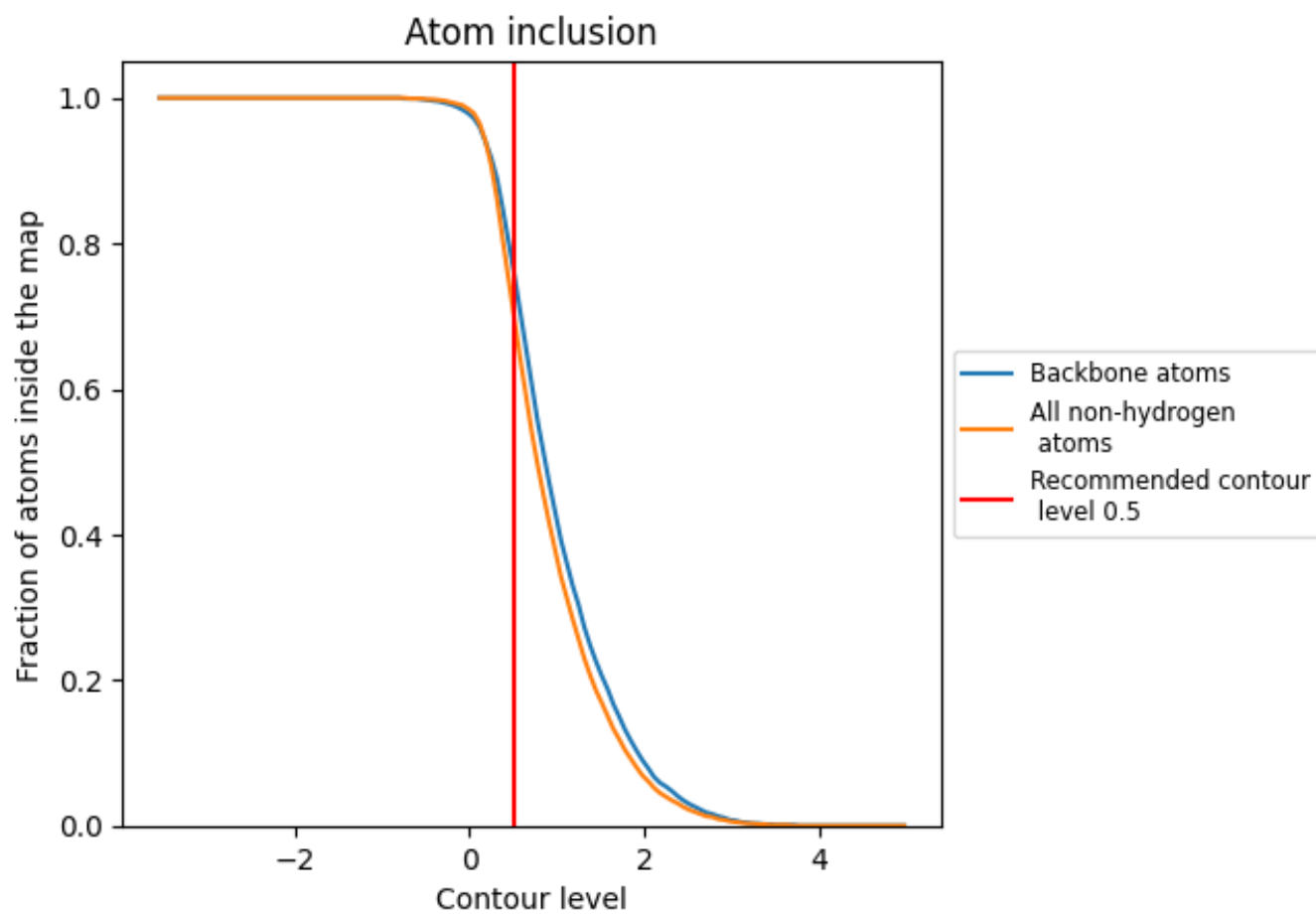
The images above show the model with each residue coloured according to its Q-score. This shows their resolvability in the map with higher Q-score values reflecting better resolvability. Please note: Q-score is calculating the resolvability of atoms, and thus high values are only expected at resolutions at which atoms can be resolved. Low Q-score values may therefore be expected for many entries.

9.3 Atom inclusion mapped to coordinate model [\(i\)](#)



The images above show the model with each residue coloured according to its atom inclusion. This shows to what extent they are inside the map at the recommended contour level (0.5).















9.4 Atom inclusion [i](#)



At the recommended contour level, 77% of all backbone atoms, 70% of all non-hydrogen atoms, are inside the map.

9.5 Map-model fit summary [i](#)

The table lists the average atom inclusion at the recommended contour level (0.5) and Q-score for the entire model and for each chain.

Chain	Atom inclusion	Q-score
All	 0.7050	 0.4230
A	 0.6480	 0.4050
B	 0.8470	 0.4940
C	 0.8310	 0.4610
D	 0.6070	 0.3430
E	 0.7080	 0.4390
F	 0.5530	 0.3390

