



Full wwPDB EM Validation Report ⓘ

Jun 17, 2024 – 12:23 AM JST

PDB ID : 8YRO
EMDB ID : EMD-39546
Title : SARS-CoV-2 Delta Spike in complex with JL-8C
Authors : Nguyen, V.H.T.; Chen, X.
Deposited on : 2024-03-21
Resolution : 3.27 Å (reported)
Based on initial model : 8HHY

This is a Full wwPDB EM Validation Report for a publicly released PDB entry.

We welcome your comments at validation@mail.wwpdb.org

A user guide is available at

<https://www.wwpdb.org/validation/2017/EMValidationReportHelp>

with specific help available everywhere you see the ⓘ symbol.

The types of validation reports are described at

<http://www.wwpdb.org/validation/2017/FAQs#types>.

The following versions of software and data (see [references ⓘ](#)) were used in the production of this report:

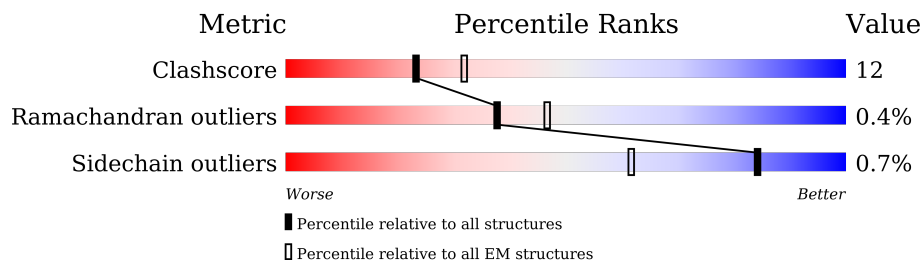
EMDB validation analysis : 0.0.1.dev92
MolProbity : 4.02b-467
Percentile statistics : 20191225.v01 (using entries in the PDB archive December 25th 2019)
MapQ : 1.9.13
Ideal geometry (proteins) : Engh & Huber (2001)
Ideal geometry (DNA, RNA) : Parkinson et al. (1996)
Validation Pipeline (wwPDB-VP) : 2.37.1

1 Overall quality at a glance

The following experimental techniques were used to determine the structure:
ELECTRON MICROSCOPY

The reported resolution of this entry is 3.27 Å.

Percentile scores (ranging between 0-100) for global validation metrics of the entry are shown in the following graphic. The table shows the number of entries on which the scores are based.



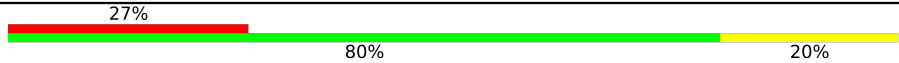
Metric	Whole archive (#Entries)	EM structures (#Entries)
Clashscore	158937	4297
Ramachandran outliers	154571	4023
Sidechain outliers	154315	3826

The table below summarises the geometric issues observed across the polymeric chains and their fit to the map. The red, orange, yellow and green segments of the bar indicate the fraction of residues that contain outliers for ≥ 3 , 2, 1 and 0 types of geometric quality criteria respectively. A grey segment represents the fraction of residues that are not modelled. The numeric value for each fraction is indicated below the corresponding segment, with a dot representing fractions $\leq 5\%$. The upper red bar (where present) indicates the fraction of residues that have poor fit to the EM map (all-atom inclusion $< 40\%$). The numeric value is given above the bar.

Mol	Chain	Length	Quality of chain
1	A	1259	
1	D	1259	
1	P	1259	
2	B	121	
2	E	121	
2	H	121	
3	C	110	
3	F	110	

Continued on next page...

Continued from previous page...

Mol	Chain	Length	Quality of chain
3	L	110	 <p>A horizontal bar chart representing the quality of chain. The bar is divided into three segments: a red segment on the left labeled '27%', a green segment in the middle labeled '80%', and a yellow segment on the right labeled '20%'. The segments are stacked horizontally, with the red segment starting from the left and ending at 27%, the green segment starting at 27% and ending at 80%, and the yellow segment starting at 80% and ending at 100%.</p>

2 Entry composition [i](#)

There are 3 unique types of molecules in this entry. The entry contains 27775 atoms, of which 0 are hydrogens and 0 are deuteriums.

In the tables below, the AltConf column contains the number of residues with at least one atom in alternate conformation and the Trace column contains the number of residues modelled with at most 2 atoms.

- Molecule 1 is a protein called Spike glycoprotein.

Mol	Chain	Residues	Atoms					AltConf	Trace
			Total	C	N	O	S		
1	A	970	7535	4808	1255	1437	35	0	0
1	D	967	7547	4828	1259	1426	34	0	0
1	P	959	7491	4784	1248	1425	34	0	0

There are 243 discrepancies between the modelled and reference sequences:

Chain	Residue	Modelled	Actual	Comment	Reference
A	-5	MET	-	expression tag	UNP P0DTC2
A	-4	LYS	-	expression tag	UNP P0DTC2
A	-3	VAL	-	expression tag	UNP P0DTC2
A	-2	LYS	-	expression tag	UNP P0DTC2
A	-1	LEU	-	expression tag	UNP P0DTC2
A	0	LEU	-	expression tag	UNP P0DTC2
A	1	VAL	-	expression tag	UNP P0DTC2
A	2	LEU	-	expression tag	UNP P0DTC2
A	3	LEU	-	expression tag	UNP P0DTC2
A	4	CYS	-	expression tag	UNP P0DTC2
A	5	THR	-	expression tag	UNP P0DTC2
A	6	PHE	-	expression tag	UNP P0DTC2
A	7	THR	-	expression tag	UNP P0DTC2
A	8	ALA	-	expression tag	UNP P0DTC2
A	9	THR	-	expression tag	UNP P0DTC2
A	10	TYR	-	expression tag	UNP P0DTC2
A	11	ALA	-	expression tag	UNP P0DTC2
A	12	GLY	-	expression tag	UNP P0DTC2
A	13	THR	-	expression tag	UNP P0DTC2
A	19	ARG	THR	variant	UNP P0DTC2
A	142	ASP	GLY	variant	UNP P0DTC2
A	?	-	GLU	deletion	UNP P0DTC2
A	?	-	PHE	deletion	UNP P0DTC2
A	158	GLY	ARG	variant	UNP P0DTC2

Continued on next page...

Continued from previous page...

Chain	Residue	Modelled	Actual	Comment	Reference
A	452	ARG	LEU	variant	UNP P0DTC2
A	478	LYS	THR	variant	UNP P0DTC2
A	614	GLY	ASP	variant	UNP P0DTC2
A	681	ARG	PRO	variant	UNP P0DTC2
A	682	GLY	ARG	variant	UNP P0DTC2
A	683	SER	ARG	variant	UNP P0DTC2
A	685	GLY	ARG	variant	UNP P0DTC2
A	950	ASN	ASP	variant	UNP P0DTC2
A	986	PRO	LYS	variant	UNP P0DTC2
A	987	PRO	VAL	variant	UNP P0DTC2
A	1209	ASP	-	expression tag	UNP P0DTC2
A	1210	ILE	-	expression tag	UNP P0DTC2
A	1211	ARG	-	expression tag	UNP P0DTC2
A	1212	SER	-	expression tag	UNP P0DTC2
A	1213	LEU	-	expression tag	UNP P0DTC2
A	1214	VAL	-	expression tag	UNP P0DTC2
A	1215	PRO	-	expression tag	UNP P0DTC2
A	1216	ARG	-	expression tag	UNP P0DTC2
A	1217	GLY	-	expression tag	UNP P0DTC2
A	1218	SER	-	expression tag	UNP P0DTC2
A	1219	PRO	-	expression tag	UNP P0DTC2
A	1220	GLY	-	expression tag	UNP P0DTC2
A	1221	SER	-	expression tag	UNP P0DTC2
A	1222	GLY	-	expression tag	UNP P0DTC2
A	1223	TYR	-	expression tag	UNP P0DTC2
A	1224	ILE	-	expression tag	UNP P0DTC2
A	1225	PRO	-	expression tag	UNP P0DTC2
A	1226	GLU	-	expression tag	UNP P0DTC2
A	1227	ALA	-	expression tag	UNP P0DTC2
A	1228	PRO	-	expression tag	UNP P0DTC2
A	1229	ARG	-	expression tag	UNP P0DTC2
A	1230	ASP	-	expression tag	UNP P0DTC2
A	1231	GLY	-	expression tag	UNP P0DTC2
A	1232	GLN	-	expression tag	UNP P0DTC2
A	1233	ALA	-	expression tag	UNP P0DTC2
A	1234	TYR	-	expression tag	UNP P0DTC2
A	1235	VAL	-	expression tag	UNP P0DTC2
A	1236	ARG	-	expression tag	UNP P0DTC2
A	1237	LYS	-	expression tag	UNP P0DTC2
A	1238	ASP	-	expression tag	UNP P0DTC2
A	1239	GLY	-	expression tag	UNP P0DTC2
A	1240	GLU	-	expression tag	UNP P0DTC2

Continued on next page...

Continued from previous page...

Chain	Residue	Modelled	Actual	Comment	Reference
A	1241	TRP	-	expression tag	UNP P0DTC2
A	1242	VAL	-	expression tag	UNP P0DTC2
A	1243	LEU	-	expression tag	UNP P0DTC2
A	1244	LEU	-	expression tag	UNP P0DTC2
A	1245	SER	-	expression tag	UNP P0DTC2
A	1246	THR	-	expression tag	UNP P0DTC2
A	1247	PHE	-	expression tag	UNP P0DTC2
A	1248	LEU	-	expression tag	UNP P0DTC2
A	1249	GLY	-	expression tag	UNP P0DTC2
A	1250	HIS	-	expression tag	UNP P0DTC2
A	1251	HIS	-	expression tag	UNP P0DTC2
A	1252	HIS	-	expression tag	UNP P0DTC2
A	1253	HIS	-	expression tag	UNP P0DTC2
A	1254	HIS	-	expression tag	UNP P0DTC2
A	1255	HIS	-	expression tag	UNP P0DTC2
D	-5	MET	-	expression tag	UNP P0DTC2
D	-4	LYS	-	expression tag	UNP P0DTC2
D	-3	VAL	-	expression tag	UNP P0DTC2
D	-2	LYS	-	expression tag	UNP P0DTC2
D	-1	LEU	-	expression tag	UNP P0DTC2
D	0	LEU	-	expression tag	UNP P0DTC2
D	1	VAL	-	expression tag	UNP P0DTC2
D	2	LEU	-	expression tag	UNP P0DTC2
D	3	LEU	-	expression tag	UNP P0DTC2
D	4	CYS	-	expression tag	UNP P0DTC2
D	5	THR	-	expression tag	UNP P0DTC2
D	6	PHE	-	expression tag	UNP P0DTC2
D	7	THR	-	expression tag	UNP P0DTC2
D	8	ALA	-	expression tag	UNP P0DTC2
D	9	THR	-	expression tag	UNP P0DTC2
D	10	TYR	-	expression tag	UNP P0DTC2
D	11	ALA	-	expression tag	UNP P0DTC2
D	12	GLY	-	expression tag	UNP P0DTC2
D	13	THR	-	expression tag	UNP P0DTC2
D	19	ARG	THR	variant	UNP P0DTC2
D	142	ASP	GLY	variant	UNP P0DTC2
D	?	-	GLU	deletion	UNP P0DTC2
D	?	-	PHE	deletion	UNP P0DTC2
D	158	GLY	ARG	variant	UNP P0DTC2
D	452	ARG	LEU	variant	UNP P0DTC2
D	478	LYS	THR	variant	UNP P0DTC2
D	614	GLY	ASP	variant	UNP P0DTC2

Continued on next page...

Continued from previous page...

Chain	Residue	Modelled	Actual	Comment	Reference
D	681	ARG	PRO	variant	UNP P0DTC2
D	682	GLY	ARG	variant	UNP P0DTC2
D	683	SER	ARG	variant	UNP P0DTC2
D	685	GLY	ARG	variant	UNP P0DTC2
D	950	ASN	ASP	variant	UNP P0DTC2
D	986	PRO	LYS	variant	UNP P0DTC2
D	987	PRO	VAL	variant	UNP P0DTC2
D	1209	ASP	-	expression tag	UNP P0DTC2
D	1210	ILE	-	expression tag	UNP P0DTC2
D	1211	ARG	-	expression tag	UNP P0DTC2
D	1212	SER	-	expression tag	UNP P0DTC2
D	1213	LEU	-	expression tag	UNP P0DTC2
D	1214	VAL	-	expression tag	UNP P0DTC2
D	1215	PRO	-	expression tag	UNP P0DTC2
D	1216	ARG	-	expression tag	UNP P0DTC2
D	1217	GLY	-	expression tag	UNP P0DTC2
D	1218	SER	-	expression tag	UNP P0DTC2
D	1219	PRO	-	expression tag	UNP P0DTC2
D	1220	GLY	-	expression tag	UNP P0DTC2
D	1221	SER	-	expression tag	UNP P0DTC2
D	1222	GLY	-	expression tag	UNP P0DTC2
D	1223	TYR	-	expression tag	UNP P0DTC2
D	1224	ILE	-	expression tag	UNP P0DTC2
D	1225	PRO	-	expression tag	UNP P0DTC2
D	1226	GLU	-	expression tag	UNP P0DTC2
D	1227	ALA	-	expression tag	UNP P0DTC2
D	1228	PRO	-	expression tag	UNP P0DTC2
D	1229	ARG	-	expression tag	UNP P0DTC2
D	1230	ASP	-	expression tag	UNP P0DTC2
D	1231	GLY	-	expression tag	UNP P0DTC2
D	1232	GLN	-	expression tag	UNP P0DTC2
D	1233	ALA	-	expression tag	UNP P0DTC2
D	1234	TYR	-	expression tag	UNP P0DTC2
D	1235	VAL	-	expression tag	UNP P0DTC2
D	1236	ARG	-	expression tag	UNP P0DTC2
D	1237	LYS	-	expression tag	UNP P0DTC2
D	1238	ASP	-	expression tag	UNP P0DTC2
D	1239	GLY	-	expression tag	UNP P0DTC2
D	1240	GLU	-	expression tag	UNP P0DTC2
D	1241	TRP	-	expression tag	UNP P0DTC2
D	1242	VAL	-	expression tag	UNP P0DTC2
D	1243	LEU	-	expression tag	UNP P0DTC2

Continued on next page...

Continued from previous page...

Chain	Residue	Modelled	Actual	Comment	Reference
D	1244	LEU	-	expression tag	UNP P0DTC2
D	1245	SER	-	expression tag	UNP P0DTC2
D	1246	THR	-	expression tag	UNP P0DTC2
D	1247	PHE	-	expression tag	UNP P0DTC2
D	1248	LEU	-	expression tag	UNP P0DTC2
D	1249	GLY	-	expression tag	UNP P0DTC2
D	1250	HIS	-	expression tag	UNP P0DTC2
D	1251	HIS	-	expression tag	UNP P0DTC2
D	1252	HIS	-	expression tag	UNP P0DTC2
D	1253	HIS	-	expression tag	UNP P0DTC2
D	1254	HIS	-	expression tag	UNP P0DTC2
D	1255	HIS	-	expression tag	UNP P0DTC2
P	-5	MET	-	expression tag	UNP P0DTC2
P	-4	LYS	-	expression tag	UNP P0DTC2
P	-3	VAL	-	expression tag	UNP P0DTC2
P	-2	LYS	-	expression tag	UNP P0DTC2
P	-1	LEU	-	expression tag	UNP P0DTC2
P	0	LEU	-	expression tag	UNP P0DTC2
P	1	VAL	-	expression tag	UNP P0DTC2
P	2	LEU	-	expression tag	UNP P0DTC2
P	3	LEU	-	expression tag	UNP P0DTC2
P	4	CYS	-	expression tag	UNP P0DTC2
P	5	THR	-	expression tag	UNP P0DTC2
P	6	PHE	-	expression tag	UNP P0DTC2
P	7	THR	-	expression tag	UNP P0DTC2
P	8	ALA	-	expression tag	UNP P0DTC2
P	9	THR	-	expression tag	UNP P0DTC2
P	10	TYR	-	expression tag	UNP P0DTC2
P	11	ALA	-	expression tag	UNP P0DTC2
P	12	GLY	-	expression tag	UNP P0DTC2
P	13	THR	-	expression tag	UNP P0DTC2
P	19	ARG	THR	variant	UNP P0DTC2
P	142	ASP	GLY	variant	UNP P0DTC2
P	?	-	GLU	deletion	UNP P0DTC2
P	?	-	PHE	deletion	UNP P0DTC2
P	158	GLY	ARG	variant	UNP P0DTC2
P	452	ARG	LEU	variant	UNP P0DTC2
P	478	LYS	THR	variant	UNP P0DTC2
P	614	GLY	ASP	variant	UNP P0DTC2
P	681	ARG	PRO	variant	UNP P0DTC2
P	682	GLY	ARG	variant	UNP P0DTC2
P	683	SER	ARG	variant	UNP P0DTC2

Continued on next page...

Continued from previous page...

Chain	Residue	Modelled	Actual	Comment	Reference
P	685	GLY	ARG	variant	UNP P0DTC2
P	950	ASN	ASP	variant	UNP P0DTC2
P	986	PRO	LYS	variant	UNP P0DTC2
P	987	PRO	VAL	variant	UNP P0DTC2
P	1209	ASP	-	expression tag	UNP P0DTC2
P	1210	ILE	-	expression tag	UNP P0DTC2
P	1211	ARG	-	expression tag	UNP P0DTC2
P	1212	SER	-	expression tag	UNP P0DTC2
P	1213	LEU	-	expression tag	UNP P0DTC2
P	1214	VAL	-	expression tag	UNP P0DTC2
P	1215	PRO	-	expression tag	UNP P0DTC2
P	1216	ARG	-	expression tag	UNP P0DTC2
P	1217	GLY	-	expression tag	UNP P0DTC2
P	1218	SER	-	expression tag	UNP P0DTC2
P	1219	PRO	-	expression tag	UNP P0DTC2
P	1220	GLY	-	expression tag	UNP P0DTC2
P	1221	SER	-	expression tag	UNP P0DTC2
P	1222	GLY	-	expression tag	UNP P0DTC2
P	1223	TYR	-	expression tag	UNP P0DTC2
P	1224	ILE	-	expression tag	UNP P0DTC2
P	1225	PRO	-	expression tag	UNP P0DTC2
P	1226	GLU	-	expression tag	UNP P0DTC2
P	1227	ALA	-	expression tag	UNP P0DTC2
P	1228	PRO	-	expression tag	UNP P0DTC2
P	1229	ARG	-	expression tag	UNP P0DTC2
P	1230	ASP	-	expression tag	UNP P0DTC2
P	1231	GLY	-	expression tag	UNP P0DTC2
P	1232	GLN	-	expression tag	UNP P0DTC2
P	1233	ALA	-	expression tag	UNP P0DTC2
P	1234	TYR	-	expression tag	UNP P0DTC2
P	1235	VAL	-	expression tag	UNP P0DTC2
P	1236	ARG	-	expression tag	UNP P0DTC2
P	1237	LYS	-	expression tag	UNP P0DTC2
P	1238	ASP	-	expression tag	UNP P0DTC2
P	1239	GLY	-	expression tag	UNP P0DTC2
P	1240	GLU	-	expression tag	UNP P0DTC2
P	1241	TRP	-	expression tag	UNP P0DTC2
P	1242	VAL	-	expression tag	UNP P0DTC2
P	1243	LEU	-	expression tag	UNP P0DTC2
P	1244	LEU	-	expression tag	UNP P0DTC2
P	1245	SER	-	expression tag	UNP P0DTC2
P	1246	THR	-	expression tag	UNP P0DTC2

Continued on next page...

Continued from previous page...

Chain	Residue	Modelled	Actual	Comment	Reference
P	1247	PHE	-	expression tag	UNP P0DTC2
P	1248	LEU	-	expression tag	UNP P0DTC2
P	1249	GLY	-	expression tag	UNP P0DTC2
P	1250	HIS	-	expression tag	UNP P0DTC2
P	1251	HIS	-	expression tag	UNP P0DTC2
P	1252	HIS	-	expression tag	UNP P0DTC2
P	1253	HIS	-	expression tag	UNP P0DTC2
P	1254	HIS	-	expression tag	UNP P0DTC2
P	1255	HIS	-	expression tag	UNP P0DTC2

- Molecule 2 is a protein called JL-8C Heavy Chain.

Mol	Chain	Residues	Atoms					AltConf	Trace
			Total	C	N	O	S		
2	H	121	939	592	160	184	3	0	0
2	B	121	939	592	160	184	3	0	0
2	E	121	939	592	160	184	3	0	0

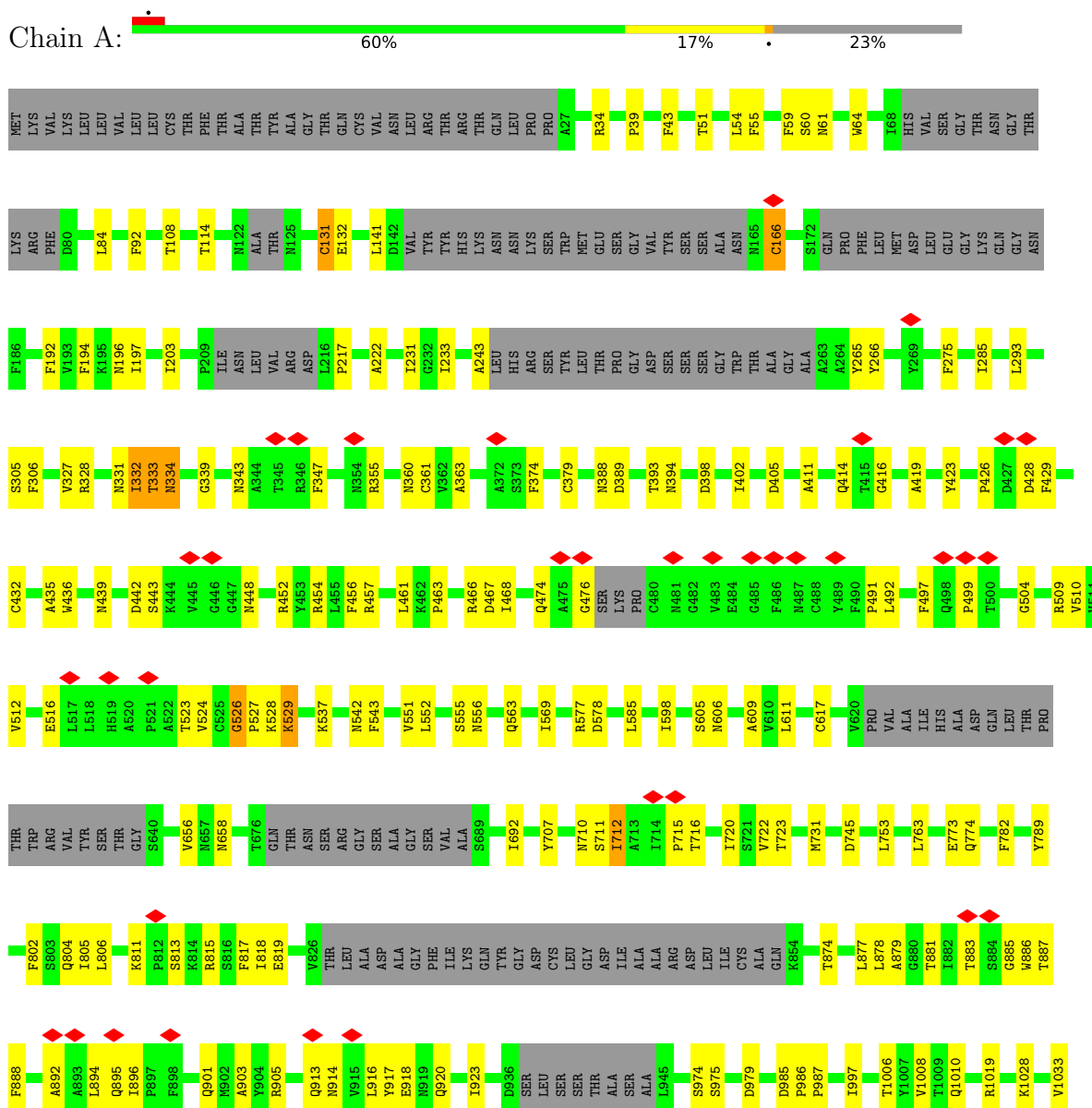
- Molecule 3 is a protein called JL-8C Light Chain.

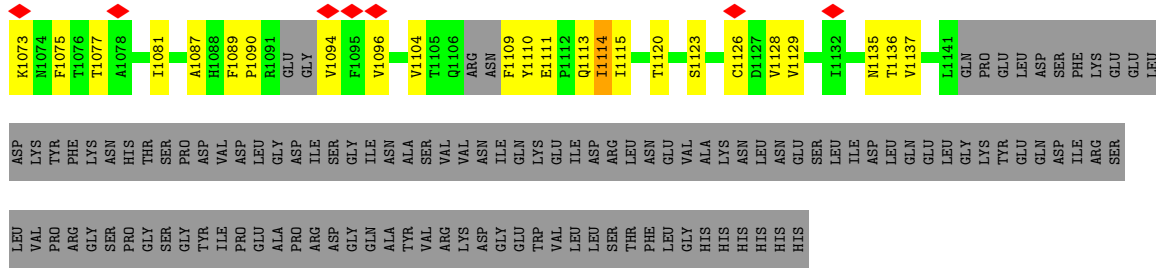
Mol	Chain	Residues	Atoms					AltConf	Trace
			Total	C	N	O	S		
3	L	110	795	491	138	164	2	0	0
3	C	110	795	491	138	164	2	0	0
3	F	110	795	491	138	164	2	0	0

3 Residue-property plots

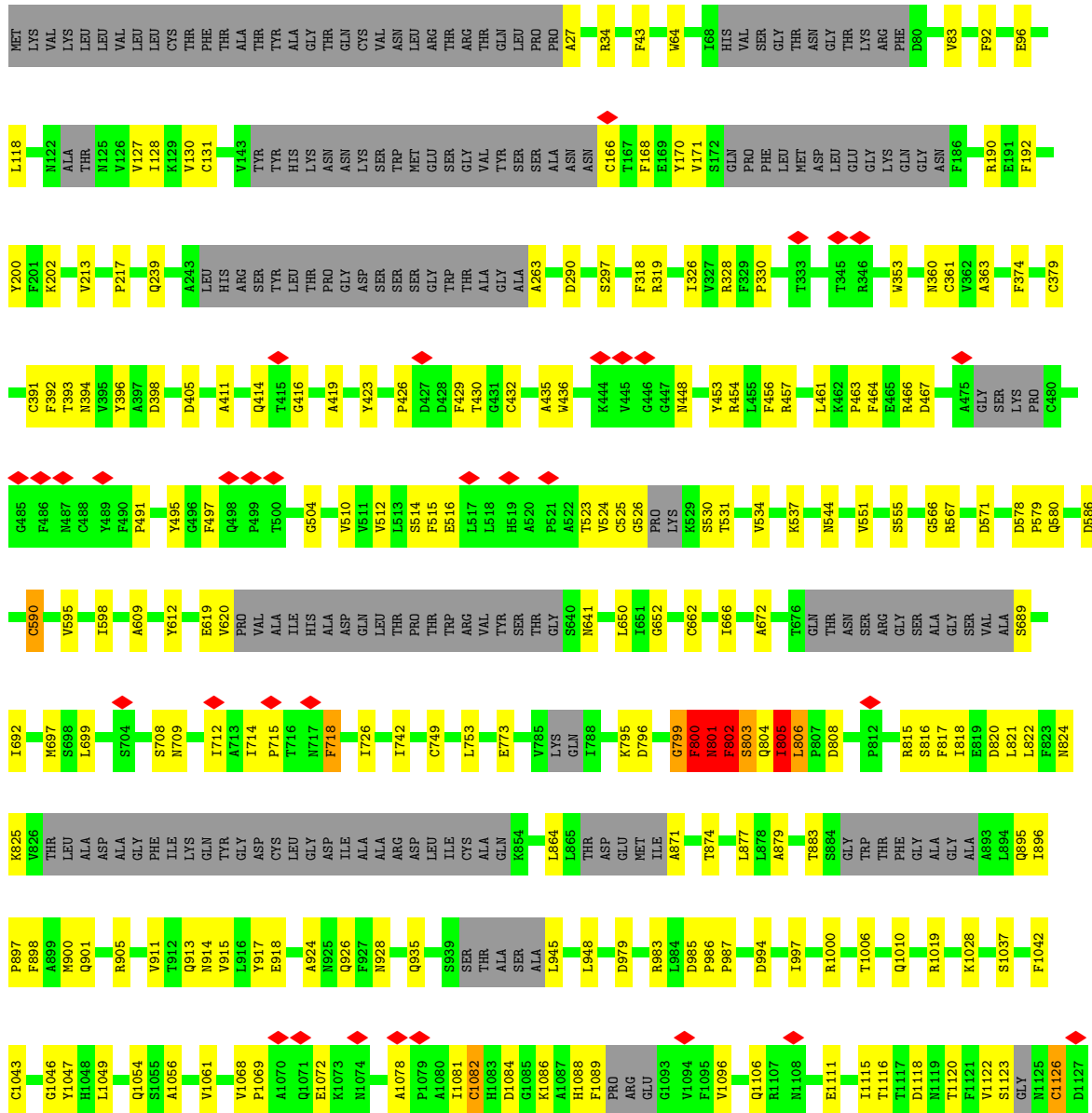
These plots are drawn for all protein, RNA, DNA and oligosaccharide chains in the entry. The first graphic for a chain summarises the proportions of the various outlier classes displayed in the second graphic. The second graphic shows the sequence view annotated by issues in geometry and atom inclusion in map density. Residues are color-coded according to the number of geometric quality criteria for which they contain at least one outlier: green = 0, yellow = 1, orange = 2 and red = 3 or more. A red diamond above a residue indicates a poor fit to the EM map for this residue (all-atom inclusion < 40%). Stretches of 2 or more consecutive residues without any outlier are shown as a green connector. Residues present in the sample, but not in the model, are shown in grey.

- Molecule 1: Spike glycoprotein



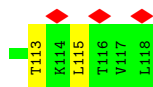
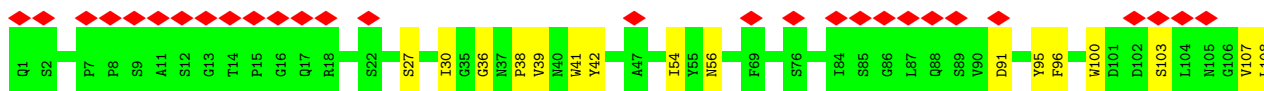
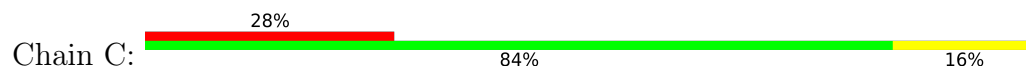


• Molecule 1: Spike glycoprotein

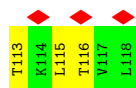
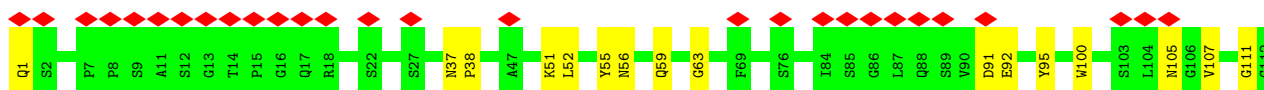
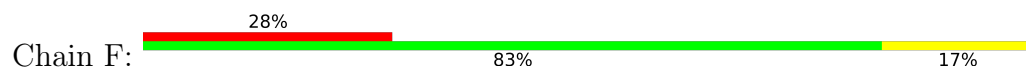




- Molecule 3: JL-8C Light Chain



- Molecule 3: JL-8C Light Chain



4 Experimental information

Property	Value	Source
EM reconstruction method	SINGLE PARTICLE	Depositor
Imposed symmetry	POINT, C3	Depositor
Number of particles used	125930	Depositor
Resolution determination method	FSC 0.143 CUT-OFF	Depositor
CTF correction method	PHASE FLIPPING AND AMPLITUDE CORRECTION	Depositor
Microscope	FEI TITAN KRIOS	Depositor
Voltage (kV)	300	Depositor
Electron dose ($e^-/\text{\AA}^2$)	52.434	Depositor
Minimum defocus (nm)	1500	Depositor
Maximum defocus (nm)	2000	Depositor
Magnification	105000	Depositor
Image detector	GATAN K3 BIOQUANTUM (6k x 4k)	Depositor
Maximum map value	4.366	Depositor
Minimum map value	-2.442	Depositor
Average map value	0.000	Depositor
Map value standard deviation	0.064	Depositor
Recommended contour level	0.22	Depositor
Map size (\AA)	424.97278, 424.97278, 424.97278	wwPDB
Map dimensions	384, 384, 384	wwPDB
Map angles ($^\circ$)	90.0, 90.0, 90.0	wwPDB
Pixel spacing (\AA)	1.1067, 1.1067, 1.1067	Depositor

5 Model quality i

5.1 Standard geometry i

The Z score for a bond length (or angle) is the number of standard deviations the observed value is removed from the expected value. A bond length (or angle) with $|Z| > 5$ is considered an outlier worth inspection. RMSZ is the root-mean-square of all Z scores of the bond lengths (or angles).

Mol	Chain	Bond lengths		Bond angles	
		RMSZ	# $ Z > 5$	RMSZ	# $ Z > 5$
1	A	0.35	0/7696	0.62	8/10464 (0.1%)
1	D	0.36	1/7709 (0.0%)	0.58	2/10478 (0.0%)
1	P	0.38	2/7646 (0.0%)	0.61	6/10388 (0.1%)
2	B	0.26	0/965	0.53	0/1308
2	E	0.28	0/965	0.53	0/1308
2	H	0.31	0/965	0.50	0/1308
3	C	0.27	0/811	0.60	0/1104
3	F	0.29	0/811	0.59	0/1104
3	L	0.28	0/811	0.59	0/1104
All	All	0.35	3/28379 (0.0%)	0.59	16/38566 (0.0%)

All (3) bond length outliers are listed below:

Mol	Chain	Res	Type	Atoms	Z	Observed(Å)	Ideal(Å)
1	P	1126	CYS	CB-SG	-5.62	1.72	1.81
1	P	590	CYS	CB-SG	-5.40	1.73	1.81
1	D	590	CYS	CB-SG	-5.18	1.73	1.81

All (16) bond angle outliers are listed below:

Mol	Chain	Res	Type	Atoms	Z	Observed(°)	Ideal(°)
1	P	802	PHE	N-CA-CB	7.55	124.20	110.60
1	P	1082	CYS	CA-CB-SG	-6.65	102.04	114.00
1	A	166	CYS	CA-CB-SG	6.06	124.90	114.00
1	P	805	ILE	CA-C-O	-6.01	107.48	120.10
1	D	712	ILE	CG1-CB-CG2	-5.99	98.21	111.40
1	P	800	PHE	C-N-CA	-5.95	106.84	121.70
1	D	1114	ILE	CG1-CB-CG2	-5.76	98.72	111.40
1	A	1126	CYS	CA-CB-SG	5.75	124.35	114.00
1	A	712	ILE	CG1-CB-CG2	-5.70	98.86	111.40
1	A	1082	CYS	CA-CB-SG	5.67	124.20	114.00
1	A	54	LEU	CA-CB-CG	5.51	127.97	115.30
1	P	805	ILE	CA-C-N	5.33	128.92	117.20

Continued on next page...

Continued from previous page...

Mol	Chain	Res	Type	Atoms	Z	Observed(°)	Ideal(°)
1	A	617	CYS	CA-CB-SG	5.16	123.28	114.00
1	A	402	ILE	CG1-CB-CG2	-5.12	100.14	111.40
1	P	699	LEU	CA-CB-CG	5.12	127.07	115.30
1	A	131	CYS	CA-CB-SG	5.03	123.06	114.00

There are no chirality outliers.

There are no planarity outliers.

5.2 Too-close contacts [i](#)

In the following table, the Non-H and H(model) columns list the number of non-hydrogen atoms and hydrogen atoms in the chain respectively. The H(added) column lists the number of hydrogen atoms added and optimized by MolProbity. The Clashes column lists the number of clashes within the asymmetric unit, whereas Symm-Clashes lists symmetry-related clashes.

Mol	Chain	Non-H	H(model)	H(added)	Clashes	Symm-Clashes
1	A	7535	0	7335	239	0
1	D	7547	0	7386	183	0
1	P	7491	0	7318	191	0
2	B	939	0	894	23	0
2	E	939	0	894	21	0
2	H	939	0	894	35	0
3	C	795	0	768	11	0
3	F	795	0	768	15	0
3	L	795	0	768	19	0
All	All	27775	0	27025	675	0

The all-atom clashscore is defined as the number of clashes found per 1000 atoms (including hydrogen atoms). The all-atom clashscore for this structure is 12.

All (675) close contacts within the same asymmetric unit are listed below, sorted by their clash magnitude.

Atom-1	Atom-2	Interatomic distance (Å)	Clash overlap (Å)
1:D:526:GLY:HA2	1:D:529:LYS:CE	1.32	1.55
1:D:526:GLY:CA	1:D:529:LYS:HE3	1.41	1.45
1:A:878:LEU:HD12	1:A:879:ALA:N	1.13	1.45
1:A:878:LEU:CD1	1:A:879:ALA:H	1.34	1.40
1:A:327:VAL:HB	1:A:529:LYS:CE	1.51	1.40
1:A:327:VAL:CB	1:A:529:LYS:HE2	1.50	1.38
1:A:1104:VAL:CG2	1:A:1115:ILE:HD13	1.54	1.38

Continued on next page...

Continued from previous page...

Atom-1	Atom-2	Interatomic distance (Å)	Clash overlap (Å)
1:A:363:ALA:O	1:A:527:PRO:CG	1.72	1.37
1:D:212:LEU:HD22	1:D:215:ASP:O	1.31	1.30
1:A:805:ILE:HG12	1:A:818:ILE:CD1	1.67	1.23
1:D:363:ALA:N	1:D:527:PRO:HG3	1.53	1.21
1:A:363:ALA:O	1:A:527:PRO:HG3	1.21	1.21
2:H:110:HIS:O	2:H:111:GLY:O	1.54	1.20
1:A:363:ALA:O	1:A:527:PRO:CD	1.93	1.16
1:P:805:ILE:HG21	1:P:1054:GLN:NE2	1.62	1.14
1:P:391:CYS:SG	1:P:524:VAL:O	2.06	1.12
1:P:800:PHE:C	1:P:802:PHE:H	1.46	1.11
2:H:109:SER:OG	3:L:55:TYR:HD1	1.35	1.10
2:B:97:ILE:HB	2:B:120:THR:HG22	1.32	1.10
1:A:1073:LYS:HG2	1:A:1074:ASN:H	1.10	1.10
1:A:805:ILE:HG12	1:A:818:ILE:HD12	1.19	1.09
1:A:363:ALA:HB3	1:A:527:PRO:HD2	1.11	1.08
1:D:363:ALA:H	1:D:527:PRO:HG3	1.02	1.08
1:A:363:ALA:HB3	1:A:527:PRO:CD	1.84	1.06
2:B:97:ILE:HD13	2:B:120:THR:HG23	1.37	1.06
1:P:803:SER:OG	1:P:935:GLN:NE2	1.89	1.06
1:D:363:ALA:H	1:D:527:PRO:CG	1.69	1.05
1:P:805:ILE:O	1:P:816:SER:OG	1.72	1.05
1:D:212:LEU:CD2	1:D:215:ASP:O	2.04	1.05
1:P:662:CYS:HB2	1:P:697:MET:SD	1.97	1.05
2:H:109:SER:OG	3:L:55:TYR:CD1	2.09	1.04
1:A:712:ILE:CG2	1:A:1077:THR:CG2	2.36	1.02
1:A:712:ILE:HG13	1:A:1075:PHE:HB2	1.41	1.02
1:A:1104:VAL:HG23	1:A:1115:ILE:CD1	1.89	1.02
1:A:363:ALA:O	1:A:527:PRO:HD3	1.57	1.01
1:P:799:GLY:HA2	1:P:928:ASN:OD1	1.59	1.01
1:A:712:ILE:CG2	1:A:1077:THR:HG21	1.92	1.00
1:A:878:LEU:CD1	1:A:879:ALA:N	2.03	1.00
1:P:1115:ILE:HG21	1:P:1136:THR:OG1	1.62	0.99
1:P:803:SER:CB	1:P:935:GLN:HE21	1.76	0.99
2:H:110:HIS:CD2	3:L:40:ASN:HD21	1.80	0.98
1:P:800:PHE:C	1:P:802:PHE:N	2.09	0.98
1:A:712:ILE:HG23	1:A:1077:THR:HG22	1.44	0.98
1:A:710:ASN:HA	1:A:1077:THR:O	1.64	0.96
1:D:985:ASP:C	1:D:987:PRO:HD2	1.83	0.96
1:P:800:PHE:HZ	1:P:898:PHE:CD1	1.83	0.95
1:A:712:ILE:HG23	1:A:1077:THR:CG2	1.94	0.94
1:A:712:ILE:HD11	1:A:1096:VAL:HB	1.48	0.94

Continued on next page...

Continued from previous page...

Atom-1	Atom-2	Interatomic distance (Å)	Clash overlap (Å)
1:A:1104:VAL:HG23	1:A:1115:ILE:HD13	0.95	0.94
3:F:92:GLU:OE2	3:F:116:THR:HA	1.67	0.93
1:D:526:GLY:HA2	1:D:529:LYS:NZ	1.82	0.93
1:A:327:VAL:HG11	1:A:529:LYS:HG3	1.52	0.91
1:A:885:GLY:O	1:A:888:PHE:CD1	2.23	0.91
1:P:800:PHE:O	1:P:802:PHE:N	2.04	0.91
1:A:878:LEU:HD12	1:A:879:ALA:CA	2.00	0.90
1:A:363:ALA:CB	1:A:527:PRO:HD2	2.00	0.90
1:D:526:GLY:H	1:D:527:PRO:HD2	1.34	0.90
2:H:106:GLN:O	2:H:108:GLY:N	2.04	0.90
1:A:1104:VAL:CG2	1:A:1115:ILE:CD1	2.47	0.90
1:A:1073:LYS:HG2	1:A:1074:ASN:N	1.86	0.89
1:P:799:GLY:O	1:P:801:ASN:N	2.04	0.89
1:D:591:SER:HB3	1:D:615:VAL:HG12	1.54	0.89
1:P:318:PHE:CD1	1:P:595:VAL:HG23	2.07	0.88
1:A:917:TYR:CB	1:P:1129:VAL:CG2	2.51	0.88
1:A:331:ASN:O	1:A:333:THR:HG23	1.73	0.88
1:A:805:ILE:CG1	1:A:818:ILE:CD1	2.52	0.87
1:P:805:ILE:O	1:P:806:LEU:C	2.12	0.86
1:D:986:PRO:N	1:D:987:PRO:HD2	1.91	0.86
2:B:97:ILE:HB	2:B:120:THR:CG2	2.05	0.85
1:A:331:ASN:O	1:A:333:THR:N	2.09	0.85
1:D:712:ILE:HD11	1:P:900:MET:SD	2.17	0.85
1:P:804:GLN:O	1:P:818:ILE:HG12	1.77	0.85
1:P:803:SER:CB	1:P:935:GLN:NE2	2.38	0.85
2:B:97:ILE:CD1	2:B:120:THR:HG23	2.06	0.84
1:P:805:ILE:O	1:P:806:LEU:O	1.95	0.83
1:P:805:ILE:HG21	1:P:1054:GLN:HE22	1.41	0.83
1:A:712:ILE:CG2	1:A:1077:THR:HG22	2.07	0.83
1:A:64:TRP:CD1	1:A:266:TYR:HE1	1.97	0.83
1:A:917:TYR:CB	1:P:1129:VAL:HG23	2.08	0.83
1:A:805:ILE:CG1	1:A:818:ILE:HD12	2.07	0.82
1:P:363:ALA:H	1:P:526:GLY:HA2	1.42	0.82
1:D:712:ILE:HG12	1:P:897:PRO:HD3	1.60	0.82
1:P:803:SER:HG	1:P:935:GLN:HE21	1.27	0.82
1:P:318:PHE:HD1	1:P:595:VAL:HG23	1.43	0.82
1:P:1120:THR:HG22	1:P:1122:VAL:HG23	1.62	0.82
1:A:885:GLY:O	1:A:888:PHE:HD1	1.61	0.81
1:A:1104:VAL:HG11	1:A:1119:ASN:HD21	1.44	0.81
1:D:712:ILE:HG12	1:P:896:ILE:HD12	1.62	0.81
1:D:391:CYS:SG	1:D:525:CYS:HB3	2.21	0.80

Continued on next page...

Continued from previous page...

Atom-1	Atom-2	Interatomic distance (Å)	Clash overlap (Å)
1:D:526:GLY:H	1:D:527:PRO:CD	1.92	0.80
1:A:985:ASP:C	1:A:987:PRO:HD2	2.00	0.80
1:D:712:ILE:HG22	1:D:713:ALA:N	1.94	0.80
2:B:97:ILE:CB	2:B:120:THR:HG22	2.09	0.80
1:D:526:GLY:C	1:D:529:LYS:HE3	2.03	0.79
1:D:591:SER:HB3	1:D:615:VAL:CG1	2.11	0.79
1:A:1073:LYS:CG	1:A:1074:ASN:H	1.94	0.79
1:A:1104:VAL:HG22	1:A:1115:ILE:HD13	1.62	0.79
1:P:805:ILE:CG2	1:P:1054:GLN:HE22	1.95	0.79
1:A:805:ILE:HG12	1:A:818:ILE:HD11	1.63	0.79
1:D:526:GLY:N	1:D:527:PRO:CD	2.45	0.79
1:P:805:ILE:CG2	1:P:1054:GLN:NE2	2.45	0.79
1:D:212:LEU:HD21	1:D:215:ASP:H	1.48	0.78
1:P:800:PHE:O	1:P:801:ASN:C	2.21	0.78
1:A:985:ASP:HB2	1:A:987:PRO:HD2	1.66	0.77
1:D:212:LEU:CD2	1:D:215:ASP:H	1.97	0.77
1:A:231:ILE:HG22	1:A:233:ILE:HG23	1.66	0.77
1:A:901:GLN:HE21	1:A:905:ARG:HE	1.32	0.77
1:D:712:ILE:CD1	1:P:896:ILE:HD12	2.16	0.76
1:A:878:LEU:CG	1:A:879:ALA:H	1.98	0.76
1:P:799:GLY:CA	1:P:928:ASN:OD1	2.33	0.76
1:A:363:ALA:CB	1:A:527:PRO:CD	2.62	0.75
1:A:363:ALA:C	1:A:527:PRO:HD3	2.06	0.74
1:P:799:GLY:O	1:P:801:ASN:ND2	2.18	0.74
1:A:805:ILE:CD1	1:A:818:ILE:HD11	2.17	0.74
1:P:804:GLN:O	1:P:805:ILE:HG13	1.87	0.74
1:A:986:PRO:N	1:A:987:PRO:CD	2.51	0.74
1:A:710:ASN:O	1:A:710:ASN:OD1	2.06	0.73
1:A:388:ASN:O	1:A:527:PRO:HG2	1.87	0.73
1:A:918:GLU:CG	1:P:1128:VAL:HG11	2.19	0.72
1:A:712:ILE:HG21	1:A:1077:THR:HG21	1.71	0.72
1:A:64:TRP:CD1	1:A:266:TYR:CE1	2.77	0.72
1:P:363:ALA:N	1:P:526:GLY:HA2	2.04	0.72
1:A:887:THR:OG1	1:A:896:ILE:HD11	1.90	0.72
1:A:985:ASP:CB	1:A:987:PRO:HD2	2.18	0.72
1:A:327:VAL:CG2	1:A:529:LYS:HE2	2.19	0.71
1:A:805:ILE:CG1	1:A:818:ILE:HD11	2.18	0.71
2:B:97:ILE:HD13	2:B:120:THR:CG2	2.18	0.71
1:A:361:CYS:HB2	1:A:524:VAL:HG13	1.72	0.71
1:D:526:GLY:CA	1:D:529:LYS:CE	2.24	0.71
1:A:327:VAL:CG1	1:A:529:LYS:HG3	2.20	0.70

Continued on next page...

Continued from previous page...

Atom-1	Atom-2	Interatomic distance (Å)	Clash overlap (Å)
1:D:712:ILE:CG1	1:P:896:ILE:HD12	2.20	0.70
1:D:985:ASP:OD1	1:D:987:PRO:HG2	1.91	0.70
1:D:1128:VAL:HG12	1:P:918:GLU:O	1.91	0.70
1:A:985:ASP:HB2	1:A:987:PRO:CD	2.21	0.70
1:D:362:VAL:HB	1:D:527:PRO:HB3	1.74	0.70
1:P:803:SER:HB3	1:P:935:GLN:NE2	2.06	0.70
1:A:878:LEU:HD12	1:A:879:ALA:CB	2.21	0.70
1:A:885:GLY:O	1:A:888:PHE:CE1	2.45	0.69
1:A:986:PRO:HD2	1:A:987:PRO:HD3	1.73	0.69
1:D:712:ILE:HD13	1:P:896:ILE:CD1	2.22	0.69
1:A:712:ILE:HD13	1:A:1096:VAL:HG12	1.75	0.69
1:A:1073:LYS:HD3	1:A:1075:PHE:CZ	2.28	0.69
1:P:363:ALA:H	1:P:526:GLY:CA	2.05	0.69
1:P:1115:ILE:HG21	1:P:1136:THR:HG1	1.56	0.69
2:H:109:SER:CB	3:L:55:TYR:CD1	2.76	0.69
1:D:712:ILE:HD13	1:D:1094:VAL:HG11	1.74	0.68
1:A:918:GLU:HG3	1:P:1128:VAL:CG1	2.22	0.68
1:A:327:VAL:HG11	1:A:529:LYS:CG	2.23	0.68
1:P:391:CYS:HG	1:P:524:VAL:C	1.92	0.68
1:P:318:PHE:CD1	1:P:595:VAL:CG2	2.76	0.68
1:A:360:ASN:H	1:A:523:THR:HB	1.58	0.67
1:P:1120:THR:CG2	1:P:1122:VAL:HG23	2.24	0.67
1:P:524:VAL:O	1:P:524:VAL:HG23	1.93	0.67
1:D:712:ILE:HG22	1:D:713:ALA:H	1.56	0.67
1:A:918:GLU:HG2	1:P:1128:VAL:HG11	1.76	0.67
1:A:363:ALA:C	1:A:527:PRO:HG3	2.13	0.67
1:D:363:ALA:N	1:D:527:PRO:CG	2.39	0.67
1:D:909:ILE:HD12	1:D:1047:TYR:HB3	1.76	0.67
1:P:130:VAL:HB	1:P:168:PHE:HB3	1.76	0.66
1:A:363:ALA:C	1:A:527:PRO:CD	2.64	0.66
1:P:800:PHE:HZ	1:P:898:PHE:CE1	2.13	0.66
1:D:426:PRO:HG2	1:D:429:PHE:HB2	1.77	0.65
1:D:1077:THR:HG21	1:P:897:PRO:HG2	1.78	0.65
1:A:712:ILE:HD11	1:A:1096:VAL:CB	2.23	0.65
1:D:712:ILE:CD1	1:P:896:ILE:CD1	2.74	0.65
1:A:333:THR:OG1	1:A:334:ASN:N	2.28	0.65
1:A:426:PRO:HG2	1:A:429:PHE:HB2	1.78	0.65
1:D:126:VAL:HB	1:D:172:SER:HB2	1.78	0.65
1:A:712:ILE:HD12	1:A:1075:PHE:CD2	2.31	0.65
1:P:805:ILE:HA	1:P:816:SER:HB3	1.78	0.65
1:D:526:GLY:HA2	1:D:529:LYS:HE3	0.66	0.64

Continued on next page...

Continued from previous page...

Atom-1	Atom-2	Interatomic distance (Å)	Clash overlap (Å)
3:F:56:ASN:HB3	3:F:59:GLN:HG2	1.80	0.64
1:D:1128:VAL:HG12	1:D:1128:VAL:O	1.97	0.64
1:P:801:ASN:H	1:P:801:ASN:HD22	1.44	0.63
1:D:902:MET:HG2	1:D:916:LEU:HD13	1.81	0.63
1:A:805:ILE:HD11	1:A:818:ILE:HD11	1.79	0.62
2:H:110:HIS:NE2	3:L:40:ASN:ND2	2.46	0.62
1:A:1028:LYS:NZ	1:A:1042:PHE:O	2.33	0.62
1:P:1006:THR:O	1:P:1010:GLN:NE2	2.33	0.62
1:P:128:ILE:HB	1:P:170:TYR:HB3	1.82	0.62
1:A:334:ASN:ND2	1:A:360:ASN:O	2.33	0.62
1:A:905:ARG:O	1:A:1036:GLN:NE2	2.33	0.62
1:P:130:VAL:HG12	1:P:130:VAL:O	2.00	0.62
1:P:714:ILE:HD11	1:P:1096:VAL:HG11	1.82	0.62
1:P:800:PHE:CZ	1:P:898:PHE:CE1	2.88	0.62
1:P:800:PHE:CZ	1:P:898:PHE:CD1	2.76	0.61
1:P:915:VAL:O	1:P:915:VAL:HG12	2.01	0.61
1:D:106:PHE:HB3	1:D:235:ILE:HD11	1.83	0.61
1:A:986:PRO:CD	1:A:987:PRO:HD3	2.30	0.61
1:D:100:ILE:HG22	1:D:242:LEU:HB2	1.81	0.61
2:H:110:HIS:C	2:H:111:GLY:O	2.36	0.61
1:A:878:LEU:HA	1:A:1053:PRO:HD2	1.82	0.61
1:D:526:GLY:O	1:D:529:LYS:CD	2.49	0.61
1:P:742:ILE:O	1:P:1000:ARG:NH1	2.32	0.61
1:P:213:VAL:HG12	1:P:213:VAL:O	2.01	0.60
1:D:1028:LYS:NZ	1:D:1042:PHE:O	2.34	0.60
1:P:715:PRO:HG3	1:P:1072:GLU:HG3	1.84	0.60
1:A:712:ILE:CD1	1:A:1096:VAL:HG12	2.32	0.60
2:H:106:GLN:O	2:H:107:TYR:C	2.39	0.60
1:D:905:ARG:O	1:D:1036:GLN:NE2	2.31	0.60
1:A:874:THR:HA	1:A:877:LEU:HB2	1.83	0.60
1:D:363:ALA:H	1:D:527:PRO:CD	2.15	0.59
1:D:526:GLY:O	1:D:529:LYS:HD2	2.02	0.59
1:P:426:PRO:HB3	1:P:463:PRO:HB3	1.82	0.59
1:P:662:CYS:CB	1:P:697:MET:SD	2.84	0.59
1:A:811:LYS:HD3	1:A:813:SER:H	1.68	0.59
1:P:641:ASN:HB3	1:P:652:GLY:H	1.68	0.59
1:D:896:ILE:CG2	1:D:901:GLN:HB3	2.33	0.59
1:P:595:VAL:HG22	1:P:612:TYR:CD2	2.38	0.59
1:P:802:PHE:HB2	1:P:806:LEU:HG	1.84	0.59
1:A:426:PRO:HB3	1:A:463:PRO:HB3	1.85	0.59
1:P:802:PHE:CB	1:P:806:LEU:HG	2.32	0.59

Continued on next page...

Continued from previous page...

Atom-1	Atom-2	Interatomic distance (Å)	Clash overlap (Å)
1:D:474:GLN:OE1	2:H:107:TYR:HE1	1.86	0.59
1:P:805:ILE:C	1:P:806:LEU:O	2.41	0.58
1:D:986:PRO:N	1:D:987:PRO:CD	2.65	0.58
1:A:363:ALA:HB3	1:A:527:PRO:CG	2.33	0.58
2:B:97:ILE:CD1	2:B:120:THR:CG2	2.80	0.58
1:A:896:ILE:HG23	1:P:712:ILE:CD1	2.33	0.58
1:D:1087:ALA:HB2	1:D:1126:CYS:HB3	1.86	0.58
2:H:110:HIS:CD2	3:L:40:ASN:ND2	2.63	0.58
1:D:1115:ILE:HG23	1:D:1120:THR:HG21	1.85	0.58
1:P:803:SER:HB3	1:P:935:GLN:HE21	1.59	0.58
1:P:1028:LYS:NZ	1:P:1042:PHE:O	2.36	0.58
1:A:916:LEU:HA	1:A:920:GLN:HE21	1.69	0.58
1:D:212:LEU:HD23	1:D:214:ARG:H	1.67	0.58
1:A:537:LYS:N	1:A:551:VAL:HG23	2.19	0.58
1:P:874:THR:HA	1:P:877:LEU:HB2	1.86	0.57
2:H:97:ILE:HG13	2:H:120:THR:HB	1.85	0.57
1:P:795:LYS:H	1:P:795:LYS:HD2	1.69	0.57
3:F:92:GLU:CD	3:F:116:THR:HA	2.25	0.57
1:D:83:VAL:HG21	1:D:237:ARG:HH21	1.69	0.57
1:D:712:ILE:CG1	1:P:897:PRO:HD3	2.32	0.57
1:A:914:ASN:ND2	1:P:1123:SER:O	2.37	0.57
1:D:896:ILE:HG21	1:D:901:GLN:HB3	1.85	0.57
1:P:326:ILE:HD11	1:P:534:VAL:HG12	1.86	0.57
1:P:555:SER:HB2	1:P:586:ASP:HB2	1.85	0.57
1:A:1104:VAL:HG23	1:A:1115:ILE:HA	1.87	0.57
1:D:331:ASN:OD1	1:D:334:ASN:ND2	2.35	0.57
1:A:363:ALA:CA	1:A:527:PRO:CD	2.83	0.57
1:A:563:GLN:O	1:A:577:ARG:NH1	2.38	0.57
1:A:716:THR:HA	1:A:1110:TYR:CD2	2.40	0.57
1:D:712:ILE:HD13	1:D:1094:VAL:CG1	2.35	0.56
1:A:141:LEU:HB2	1:A:243:ALA:HA	1.87	0.56
1:A:918:GLU:CG	1:P:1128:VAL:CG1	2.83	0.56
1:A:805:ILE:CD1	1:A:818:ILE:CD1	2.83	0.56
1:A:1006:THR:O	1:A:1010:GLN:NE2	2.38	0.56
1:A:1104:VAL:CG2	1:A:1115:ILE:HA	2.36	0.56
1:A:537:LYS:H	1:A:551:VAL:HG23	1.70	0.56
2:B:58:ASP:OD1	2:B:60:ASP:HB2	2.04	0.56
1:D:426:PRO:HB3	1:D:463:PRO:HB3	1.87	0.56
1:A:529:LYS:CA	1:A:529:LYS:HE3	2.35	0.56
2:E:97:ILE:HG13	2:E:120:THR:HB	1.88	0.56
1:A:435:ALA:HB2	1:A:510:VAL:HG23	1.88	0.56

Continued on next page...

Continued from previous page...

Atom-1	Atom-2	Interatomic distance (Å)	Clash overlap (Å)
1:P:718:PHE:O	1:P:926:GLN:NE2	2.39	0.56
1:D:716:THR:CG2	1:D:1073:LYS:HE2	2.36	0.56
1:P:398:ASP:HB2	1:P:512:VAL:HB	1.87	0.56
1:P:718:PHE:HA	1:P:1069:PRO:HA	1.88	0.56
2:E:110:HIS:HE1	3:F:38:PRO:HD2	1.70	0.56
1:A:1090:PRO:HG2	1:D:904:TYR:HE1	1.69	0.55
1:D:435:ALA:HB2	1:D:510:VAL:HG23	1.87	0.55
1:D:566:GLY:HA2	1:P:43:PHE:HB3	1.88	0.55
1:P:666:ILE:HD11	1:P:672:ALA:HB2	1.88	0.55
1:D:598:ILE:HB	1:D:609:ALA:HB3	1.88	0.55
1:A:878:LEU:CD1	1:A:879:ALA:CB	2.84	0.55
1:A:327:VAL:HG22	1:A:542:ASN:HB3	1.87	0.55
1:A:712:ILE:CD1	1:A:1075:PHE:CD2	2.89	0.55
1:A:874:THR:O	1:A:878:LEU:HG	2.07	0.55
2:H:6:GLN:O	2:H:117:GLN:NE2	2.40	0.55
2:H:106:GLN:C	2:H:108:GLY:N	2.59	0.55
1:P:986:PRO:N	1:P:987:PRO:CD	2.70	0.55
1:A:918:GLU:HG3	1:P:1128:VAL:HG12	1.87	0.55
1:P:426:PRO:HG2	1:P:429:PHE:HB2	1.88	0.55
3:F:100:TRP:HA	3:F:107:VAL:HA	1.89	0.55
1:A:1054:GLN:HB2	1:A:1061:VAL:HB	1.88	0.54
1:A:1076:THR:O	1:A:1097:SER:HB3	2.07	0.54
1:D:858:LEU:HD13	1:D:959:LEU:HD22	1.89	0.54
1:A:552:LEU:HB3	1:A:585:LEU:HD12	1.88	0.54
1:P:127:VAL:HG12	1:P:171:VAL:HG22	1.89	0.54
1:D:712:ILE:CD1	1:D:1094:VAL:CG1	2.84	0.54
1:P:328:ARG:NH1	1:P:531:THR:O	2.40	0.54
1:D:330:PRO:HG3	1:D:579:PRO:HB2	1.88	0.54
1:D:667:GLY:HA2	1:P:864:LEU:HA	1.88	0.54
1:A:454:ARG:NH2	1:A:467:ASP:O	2.41	0.54
1:D:882:ILE:HA	1:D:901:GLN:HE22	1.72	0.54
2:B:6:GLN:O	2:B:117:GLN:NE2	2.41	0.54
2:E:6:GLN:O	2:E:117:GLN:NE2	2.40	0.54
1:D:526:GLY:N	1:D:527:PRO:HD2	2.09	0.54
1:D:760:CYS:HA	1:D:763:LEU:HB2	1.89	0.54
1:D:1090:PRO:HD2	1:P:913:GLN:HE22	1.73	0.54
1:P:817:PHE:O	1:P:821:LEU:N	2.36	0.54
1:P:905:ARG:NH1	1:P:1049:LEU:O	2.35	0.54
1:P:1084:ASP:OD1	1:P:1084:ASP:O	2.25	0.54
2:B:110:HIS:HE1	3:C:38:PRO:HD2	1.72	0.54
1:D:231:ILE:HD12	1:D:233:ILE:HG12	1.89	0.53

Continued on next page...

Continued from previous page...

Atom-1	Atom-2	Interatomic distance (Å)	Clash overlap (Å)
2:H:110:HIS:CD2	2:H:111:GLY:H	2.26	0.53
2:H:33:HIS:ND1	2:H:103:ARG:O	2.40	0.53
3:L:100:TRP:HA	3:L:107:VAL:HA	1.91	0.53
3:F:91:ASP:HB2	3:F:115:LEU:HD22	1.90	0.53
1:P:1046:GLY:HA3	1:P:1068:VAL:HG21	1.90	0.53
3:L:95:TYR:HB2	3:L:113:THR:HB	1.90	0.53
1:P:924:ALA:O	1:P:928:ASN:ND2	2.42	0.53
2:B:109:SER:HB2	3:C:56:ASN:HB2	1.91	0.53
1:D:80:ASP:OD1	1:D:80:ASP:N	2.41	0.53
1:A:34:ARG:HH21	1:A:217:PRO:HG2	1.73	0.53
1:A:598:ILE:HB	1:A:609:ALA:HB3	1.90	0.53
1:A:815:ARG:HE	1:A:819:GLU:HG3	1.73	0.53
1:A:1126:CYS:HB3	1:A:1132:ILE:HD13	1.90	0.53
3:L:1:GLN:HE22	3:L:111:GLY:HA2	1.74	0.53
1:A:609:ALA:HB2	1:A:692:ILE:HD12	1.91	0.53
1:D:131:CYS:HB2	1:D:166:CYS:HA	1.90	0.53
1:A:731:MET:H	1:A:774:GLN:HG2	1.74	0.52
1:D:443:SER:HB3	1:D:499:PRO:HD3	1.90	0.52
1:P:360:ASN:H	1:P:523:THR:HB	1.74	0.52
1:P:544:ASN:HD21	1:P:579:PRO:HB3	1.75	0.52
2:H:15:PRO:HA	2:H:90:LEU:HB2	1.91	0.52
1:P:537:LYS:N	1:P:551:VAL:HG23	2.24	0.52
1:A:374:PHE:HA	1:A:436:TRP:HB3	1.92	0.52
1:A:327:VAL:HG11	1:A:529:LYS:CD	2.40	0.52
1:D:1109:PHE:HB3	1:D:1111:GLU:HG2	1.90	0.52
3:F:92:GLU:OE1	3:F:115:LEU:O	2.28	0.52
1:A:712:ILE:HG22	1:A:1077:THR:HG21	1.89	0.52
1:D:1096:VAL:HG21	1:D:1110:TYR:HE1	1.75	0.52
1:P:83:VAL:HG12	1:P:239:GLN:HB2	1.92	0.52
1:P:423:TYR:HA	1:P:461:LEU:HD22	1.92	0.52
1:A:327:VAL:CG1	1:A:529:LYS:CG	2.87	0.51
1:A:896:ILE:HG23	1:P:712:ILE:HD11	1.92	0.51
1:A:986:PRO:N	1:A:987:PRO:HD3	2.24	0.51
1:D:578:ASP:OD1	1:D:578:ASP:N	2.36	0.51
1:P:1081:ILE:HG13	1:P:1135:ASN:HB3	1.91	0.51
1:A:905:ARG:NH2	1:A:1033:VAL:O	2.43	0.51
1:P:448:ASN:ND2	1:P:497:PHE:O	2.43	0.51
1:A:878:LEU:HD12	1:A:879:ALA:H	0.60	0.51
1:D:897:PRO:HD2	1:D:900:MET:HB2	1.91	0.51
3:C:100:TRP:HA	3:C:107:VAL:HA	1.91	0.51
1:A:605:SER:OG	1:A:606:ASN:N	2.44	0.51

Continued on next page...

Continued from previous page...

Atom-1	Atom-2	Interatomic distance (Å)	Clash overlap (Å)
1:A:712:ILE:HG22	1:A:1077:THR:CG2	2.36	0.51
1:A:985:ASP:C	1:A:987:PRO:CD	2.70	0.51
3:F:95:TYR:HB2	3:F:113:THR:HB	1.93	0.51
1:P:985:ASP:C	1:P:987:PRO:HD2	2.30	0.51
1:D:201:PHE:HB3	1:D:229:LEU:HB2	1.91	0.51
1:P:598:ILE:HB	1:P:609:ALA:HB3	1.93	0.51
1:A:782:PHE:O	1:A:877:LEU:HD11	2.11	0.51
1:A:1090:PRO:HB3	1:A:1120:THR:HG22	1.93	0.51
1:D:609:ALA:HB2	1:D:692:ILE:HD12	1.91	0.51
1:A:84:LEU:HD11	1:A:265:TYR:HE2	1.76	0.51
1:A:895:GLN:C	1:A:896:ILE:HG13	2.31	0.51
1:D:712:ILE:CG2	1:D:713:ALA:N	2.67	0.51
1:A:526:GLY:N	1:A:527:PRO:HD2	2.26	0.51
1:D:802:PHE:HA	1:D:805:ILE:HB	1.93	0.50
2:B:102:ARG:HB3	2:B:114:VAL:HB	1.93	0.50
1:D:454:ARG:NH2	1:D:467:ASP:O	2.44	0.50
1:P:820:ASP:O	1:P:824:ASN:N	2.43	0.50
2:E:33:HIS:ND1	2:E:103:ARG:O	2.45	0.50
1:D:929:SER:OG	1:D:933:LYS:NZ	2.45	0.50
3:C:91:ASP:HB2	3:C:115:LEU:HD22	1.93	0.50
1:P:416:GLY:H	1:P:419:ALA:HB3	1.77	0.50
2:H:109:SER:HB2	3:L:55:TYR:CD1	2.46	0.50
1:A:363:ALA:CA	1:A:527:PRO:HD3	2.42	0.50
1:A:712:ILE:CD1	1:A:1096:VAL:CG1	2.89	0.50
1:D:210:ILE:HD12	1:D:212:LEU:HB3	1.92	0.50
1:P:353:TRP:O	1:P:466:ARG:NH1	2.45	0.50
1:P:454:ARG:NH2	1:P:467:ASP:O	2.45	0.50
1:D:565:PHE:HE2	1:D:567:ARG:HH21	1.60	0.50
1:A:1079:PRO:HG3	1:D:899:ALA:HB3	1.94	0.50
1:P:708:SER:OG	1:P:709:ASN:N	2.44	0.49
3:F:1:GLN:HE22	3:F:111:GLY:HA2	1.76	0.49
2:B:33:HIS:ND1	2:B:103:ARG:O	2.45	0.49
2:B:97:ILE:CA	2:B:120:THR:HG22	2.41	0.49
1:P:1123:SER:O	1:P:1123:SER:OG	2.29	0.49
1:D:394:ASN:ND2	1:D:516:GLU:O	2.44	0.49
1:D:526:GLY:O	1:D:529:LYS:HG3	2.12	0.49
1:A:448:ASN:ND2	1:A:497:PHE:O	2.46	0.49
1:D:455:LEU:HD22	1:D:493:GLN:HB2	1.94	0.49
1:D:525:CYS:SG	1:D:526:GLY:N	2.86	0.49
1:P:374:PHE:HA	1:P:436:TRP:HB3	1.94	0.49
2:H:103:ARG:HG3	2:H:110:HIS:O	2.13	0.49

Continued on next page...

Continued from previous page...

Atom-1	Atom-2	Interatomic distance (Å)	Clash overlap (Å)
1:A:526:GLY:H	1:A:527:PRO:HD2	1.77	0.49
1:D:454:ARG:HH11	1:D:491:PRO:HB2	1.78	0.49
1:D:1073:LYS:HE3	1:D:1075:PHE:HZ	1.76	0.49
1:A:456:PHE:HB2	1:A:491:PRO:HA	1.94	0.49
2:H:110:HIS:CG	2:H:111:GLY:H	2.30	0.49
1:D:316:SER:OG	1:D:317:ASN:N	2.46	0.49
1:A:333:THR:O	1:A:334:ASN:O	2.30	0.49
1:A:712:ILE:HD11	1:A:1096:VAL:CG1	2.43	0.49
1:A:753:LEU:HD13	1:A:997:ILE:HD11	1.95	0.49
1:P:619:GLU:HG2	1:P:620:VAL:HG13	1.95	0.49
1:A:974:SER:OG	1:A:975:SER:N	2.46	0.49
1:A:715:PRO:HD3	1:D:894:LEU:HG	1.94	0.48
1:A:1104:VAL:HG22	1:A:1115:ILE:CD1	2.30	0.48
1:D:67:ALA:HB2	1:D:265:TYR:HE1	1.77	0.48
3:C:42:TYR:HB2	3:C:96:PHE:HB2	1.94	0.48
1:A:722:VAL:HG22	1:A:1065:VAL:HG22	1.95	0.48
1:A:1128:VAL:HG12	1:D:918:GLU:HG2	1.95	0.48
1:D:48:LEU:HB3	1:D:276:LEU:HD11	1.95	0.48
1:D:707:TYR:HA	1:D:711:SER:HB3	1.95	0.48
1:P:1078:ALA:HB3	1:P:1133:VAL:HG22	1.95	0.48
1:A:454:ARG:HH11	1:A:491:PRO:HB2	1.78	0.48
1:A:1080:ALA:HB3	1:A:1132:ILE:HD12	1.95	0.48
1:D:474:GLN:OE1	2:H:107:TYR:CE1	2.65	0.48
1:A:196:ASN:O	1:A:197:ILE:HD13	2.12	0.48
1:A:720:ILE:HG21	1:A:923:ILE:HG12	1.95	0.48
1:D:811:LYS:NZ	1:D:813:SER:O	2.41	0.48
1:D:666:ILE:HD11	1:D:670:ILE:HB	1.96	0.48
1:D:979:ASP:OD1	1:D:983:ARG:NH2	2.47	0.48
3:L:41:TRP:HB2	3:L:54:ILE:HB	1.96	0.48
3:L:103:SER:HB2	3:L:108:LEU:HD11	1.93	0.48
2:B:20:LYS:HG3	2:B:86:GLN:HB2	1.95	0.48
1:A:43:PHE:HB3	1:P:566:GLY:HA2	1.95	0.48
1:D:374:PHE:HA	1:D:436:TRP:HB3	1.96	0.48
1:D:526:GLY:CA	1:D:529:LYS:NZ	2.61	0.48
3:C:27:SER:O	3:C:36:GLY:N	2.46	0.48
1:A:108:THR:H	1:A:114:THR:HG21	1.78	0.48
1:P:96:GLU:OE2	1:P:263:ALA:N	2.47	0.48
1:A:529:LYS:HE3	1:A:529:LYS:HA	1.94	0.48
2:E:109:SER:OG	2:E:110:HIS:N	2.46	0.48
1:A:1046:GLY:HA3	1:A:1068:VAL:HG22	1.95	0.47
1:P:190:ARG:HG2	1:P:192:PHE:HE1	1.79	0.47

Continued on next page...

Continued from previous page...

Atom-1	Atom-2	Interatomic distance (Å)	Clash overlap (Å)
1:P:726:ILE:HG12	1:P:1061:VAL:HG22	1.96	0.47
1:A:598:ILE:HD11	1:A:611:LEU:HB2	1.95	0.47
1:A:656:VAL:HG12	1:A:658:ASN:H	1.79	0.47
1:A:1089:PHE:HE2	1:A:1123:SER:HB2	1.78	0.47
1:P:815:ARG:HG2	1:P:871:ALA:HB1	1.97	0.47
1:D:1129:VAL:HG13	1:P:917:TYR:HB3	1.95	0.47
3:L:42:TYR:HB2	3:L:96:PHE:HB2	1.96	0.47
2:E:113:ASP:HA	3:F:52:LEU:HB3	1.97	0.47
1:A:305:SER:OG	1:A:306:PHE:N	2.48	0.47
1:A:333:THR:O	1:A:334:ASN:C	2.52	0.47
1:A:529:LYS:CE	1:A:529:LYS:HA	2.44	0.47
1:A:887:THR:HB	1:A:894:LEU:HD22	1.96	0.47
1:D:553:THR:O	1:D:586:ASP:N	2.46	0.47
1:P:825:LYS:HA	1:P:825:LYS:HD3	1.76	0.47
1:P:1089:PHE:HE2	1:P:1123:SER:HB3	1.79	0.47
1:A:711:SER:HA	1:A:1076:THR:HA	1.97	0.47
2:E:2:VAL:HG21	2:E:102:ARG:HH21	1.80	0.47
1:A:327:VAL:HB	1:A:529:LYS:HE2	0.62	0.47
1:A:443:SER:HB2	1:A:499:PRO:HD3	1.96	0.47
1:A:917:TYR:CA	1:P:1129:VAL:CG2	2.92	0.47
1:D:333:THR:O	1:D:333:THR:HG23	2.15	0.47
1:P:435:ALA:HB2	1:P:510:VAL:HG23	1.97	0.47
1:P:773:GLU:OE2	1:P:1019:ARG:NH1	2.47	0.47
3:C:95:TYR:HB2	3:C:113:THR:HB	1.96	0.47
2:E:15:PRO:HA	2:E:90:LEU:HB2	1.97	0.47
1:A:411:ALA:HB3	1:A:414:GLN:HB2	1.97	0.46
2:B:36:GLY:HA2	2:B:51:ILE:HA	1.97	0.46
1:A:763:LEU:HD22	1:A:1008:VAL:HG21	1.97	0.46
1:D:1104:VAL:O	1:D:1113:GLN:HB2	2.15	0.46
1:P:200:TYR:HD2	1:P:202:LYS:HE3	1.80	0.46
1:P:456:PHE:HB2	1:P:491:PRO:HA	1.96	0.46
1:A:745:ASP:H	1:P:319:ARG:HH22	1.64	0.46
1:D:439:ASN:OD1	1:D:443:SER:OG	2.32	0.46
1:D:792:PRO:HD2	1:D:797:PHE:HZ	1.79	0.46
1:D:966:LEU:O	1:D:975:SER:OG	2.32	0.46
1:A:92:PHE:HB3	1:A:192:PHE:HB2	1.98	0.46
1:P:524:VAL:O	1:P:524:VAL:CG2	2.63	0.46
2:B:15:PRO:HA	2:B:90:LEU:HB2	1.98	0.46
2:E:4:LEU:HD11	2:E:35:ILE:HD12	1.98	0.46
3:F:51:LYS:NZ	3:F:63:GLY:O	2.48	0.46
1:A:347:PHE:HE2	1:A:509:ARG:HB3	1.80	0.46

Continued on next page...

Continued from previous page...

Atom-1	Atom-2	Interatomic distance (Å)	Clash overlap (Å)
1:P:609:ALA:HB2	1:P:692:ILE:HD12	1.97	0.46
1:A:355:ARG:HG2	1:A:466:ARG:HH22	1.81	0.46
1:A:389:ASP:HA	1:A:527:PRO:O	2.15	0.46
1:A:804:GLN:O	1:A:817:PHE:N	2.47	0.46
1:A:881:THR:HG22	1:A:901:GLN:HG2	1.97	0.46
1:A:363:ALA:CB	1:A:527:PRO:CG	2.94	0.46
1:P:808:ASP:OD1	1:P:808:ASP:N	2.47	0.46
1:D:362:VAL:HB	1:D:527:PRO:CB	2.45	0.46
1:D:118:LEU:HD11	1:D:133:PHE:H	1.81	0.45
1:D:451:TYR:H	1:D:495:TYR:HE1	1.63	0.45
1:P:405:ASP:N	1:P:504:GLY:O	2.49	0.45
1:P:430:THR:OG1	1:P:515:PHE:O	2.34	0.45
1:P:911:VAL:HA	1:P:1106:GLN:HG2	1.98	0.45
1:A:474:GLN:NE2	1:A:476:GLY:O	2.50	0.45
1:P:879:ALA:O	1:P:883:THR:OG1	2.26	0.45
1:A:1054:GLN:N	1:A:1061:VAL:O	2.48	0.45
1:P:650:LEU:HD11	1:P:666:ILE:HD13	1.98	0.45
1:D:54:LEU:HD12	1:D:195:LYS:HE3	1.99	0.45
1:D:746:SER:OG	1:D:748:GLU:OE2	2.35	0.45
1:A:773:GLU:OE2	1:A:1019:ARG:NH1	2.50	0.45
1:A:901:GLN:HE21	1:A:905:ARG:NE	2.09	0.45
1:D:591:SER:CB	1:D:615:VAL:HG12	2.37	0.45
1:D:743:CYS:HB3	1:D:749:CYS:HB3	1.84	0.45
2:H:109:SER:CB	3:L:55:TYR:HD1	2.20	0.45
2:H:113:ASP:HA	3:L:52:LEU:HB3	1.99	0.45
2:B:100:CYS:H	2:B:116:GLY:HA3	1.82	0.45
1:D:650:LEU:HD21	1:D:653:ALA:HB3	1.99	0.45
2:H:4:LEU:HD11	2:H:35:ILE:HD12	1.98	0.45
1:A:723:THR:HB	1:A:1064:HIS:HB2	1.98	0.45
1:P:27:ALA:O	1:P:64:TRP:N	2.50	0.45
1:P:802:PHE:HB3	1:P:806:LEU:H	1.81	0.45
1:D:127:VAL:HG23	1:D:127:VAL:O	2.17	0.45
1:D:927:PHE:HE1	1:D:1063:LEU:HD23	1.81	0.45
1:P:131:CYS:HB3	1:P:166:CYS:HB2	1.76	0.45
1:A:405:ASP:N	1:A:504:GLY:O	2.50	0.45
2:B:4:LEU:HD13	2:B:100:CYS:HB3	1.98	0.45
1:A:789:TYR:OH	1:A:892:ALA:O	2.30	0.44
3:C:103:SER:HB2	3:C:108:LEU:HD11	1.98	0.44
1:A:361:CYS:H	1:A:524:VAL:HG22	1.83	0.44
1:D:305:SER:OG	1:D:306:PHE:N	2.51	0.44
1:D:398:ASP:HB2	1:D:512:VAL:HB	1.99	0.44

Continued on next page...

Continued from previous page...

Atom-1	Atom-2	Interatomic distance (Å)	Clash overlap (Å)
1:D:1114:ILE:HG22	1:D:1115:ILE:H	1.81	0.44
1:A:363:ALA:O	1:A:527:PRO:CB	2.55	0.44
1:A:428:ASP:OD1	1:A:428:ASP:N	2.43	0.44
1:A:886:TRP:HE1	1:P:1047:TYR:HH	1.64	0.44
1:P:818:ILE:HD13	1:P:821:LEU:HD12	2.00	0.44
1:P:979:ASP:HB2	1:P:983:ARG:HH21	1.83	0.44
2:H:2:VAL:HG21	2:H:102:ARG:HH21	1.81	0.44
2:E:109:SER:HB3	3:F:55:TYR:HB2	1.99	0.44
1:D:94:SER:HA	1:D:265:TYR:HB3	1.99	0.44
1:D:673:SER:OG	1:D:674:TYR:N	2.50	0.44
1:P:411:ALA:HB3	1:P:414:GLN:HB2	1.99	0.44
2:H:36:GLY:HA2	2:H:51:ILE:HA	1.99	0.44
1:A:39:PRO:HG3	1:A:51:THR:HG21	2.00	0.44
1:D:369:TYR:OH	1:D:388:ASN:ND2	2.51	0.44
1:D:1136:THR:OG1	1:D:1137:VAL:N	2.51	0.44
2:H:13:LYS:HD2	2:H:13:LYS:HA	1.81	0.44
3:L:51:LYS:HB3	3:L:51:LYS:HE2	1.73	0.44
1:P:805:ILE:O	1:P:816:SER:CB	2.63	0.44
1:D:199:GLY:HA3	1:D:232:GLY:HA2	1.99	0.44
1:D:201:PHE:HD2	1:D:229:LEU:HD12	1.82	0.44
1:D:736:VAL:HG23	1:D:858:LEU:HD23	2.00	0.44
1:P:453:TYR:HB3	1:P:495:TYR:CZ	2.53	0.44
1:A:1089:PHE:CD1	1:D:913:GLN:HB2	2.53	0.43
1:D:1089:PHE:CE2	1:D:1123:SER:OG	2.72	0.43
2:H:52:ILE:HB	2:H:63:TYR:OH	2.18	0.43
1:A:896:ILE:HA	1:P:712:ILE:HD13	2.00	0.43
1:A:555:SER:OG	1:A:556:ASN:N	2.51	0.43
1:P:804:GLN:O	1:P:818:ILE:N	2.52	0.43
1:D:591:SER:HB3	1:D:615:VAL:HG11	1.97	0.43
2:H:85:LEU:HD12	2:H:85:LEU:HA	1.82	0.43
2:B:52:ILE:HD12	2:B:74:PHE:HB3	2.01	0.43
2:E:85:LEU:HD12	2:E:85:LEU:HA	1.79	0.43
1:A:398:ASP:HB3	1:A:512:VAL:HB	1.99	0.43
1:D:526:GLY:O	1:D:529:LYS:CG	2.66	0.43
1:P:1046:GLY:HA3	1:P:1068:VAL:CG2	2.48	0.43
1:A:394:ASN:ND2	1:A:516:GLU:O	2.51	0.43
1:D:37:TYR:OH	1:D:54:LEU:O	2.27	0.43
1:D:101:ILE:HA	1:D:242:LEU:HA	1.99	0.43
1:D:220:PHE:HE2	1:D:285:ILE:HG22	1.84	0.43
1:P:118:LEU:HD13	1:P:118:LEU:HA	1.90	0.43
1:P:328:ARG:NE	1:P:578:ASP:OD1	2.50	0.43

Continued on next page...

Continued from previous page...

Atom-1	Atom-2	Interatomic distance (Å)	Clash overlap (Å)
1:A:327:VAL:CB	1:A:529:LYS:CE	2.41	0.43
1:A:457:ARG:HH21	1:A:467:ASP:HB2	1.83	0.43
1:A:468:ILE:HD11	3:F:100:TRP:HZ2	1.84	0.43
1:D:763:LEU:HD22	1:D:1008:VAL:HG21	2.00	0.43
1:P:948:LEU:HD23	1:P:948:LEU:HA	1.82	0.43
1:A:877:LEU:HD23	1:A:888:PHE:HZ	1.84	0.43
1:A:895:GLN:O	1:A:896:ILE:HG13	2.18	0.43
1:D:885:GLY:HA3	1:D:896:ILE:HD12	2.00	0.43
1:D:1067:TYR:HH	1:D:1109:PHE:N	2.16	0.43
2:H:61:THR:HB	2:H:63:TYR:CE2	2.54	0.43
1:D:773:GLU:OE2	1:D:1019:ARG:NH1	2.52	0.43
1:P:92:PHE:HB3	1:P:192:PHE:HB2	2.00	0.43
2:H:62:ARG:HE	2:H:62:ARG:HB2	1.68	0.43
3:L:27:SER:HA	3:L:78:THR:HG22	2.01	0.43
2:B:85:LEU:HD12	2:B:85:LEU:HA	1.83	0.43
1:P:1086:LYS:HD2	1:P:1088:HIS:HE1	1.83	0.43
2:E:16:GLY:N	2:E:90:LEU:O	2.48	0.43
1:P:391:CYS:SG	1:P:392:PHE:N	2.92	0.42
1:P:914:ASN:ND2	1:P:1111:GLU:OE2	2.52	0.42
1:A:379:CYS:HA	1:A:432:CYS:HA	2.00	0.42
1:D:379:CYS:HA	1:D:432:CYS:HA	2.02	0.42
1:D:948:LEU:HD23	1:D:948:LEU:HA	1.83	0.42
1:P:689:SER:O	1:P:689:SER:OG	2.33	0.42
1:A:131:CYS:HB2	1:A:166:CYS:HB2	1.45	0.42
1:A:222:ALA:HB2	1:A:285:ILE:HB	2.01	0.42
1:D:212:LEU:HD21	1:D:215:ASP:O	2.08	0.42
1:P:363:ALA:H	1:P:526:GLY:N	2.17	0.42
2:H:100:CYS:H	2:H:116:GLY:HA3	1.83	0.42
3:F:37:ASN:ND2	3:F:100:TRP:O	2.40	0.42
1:A:332:ILE:HG13	1:A:332:ILE:O	2.19	0.42
1:A:815:ARG:HH21	1:A:819:GLU:HG3	1.83	0.42
1:A:905:ARG:NH1	1:A:1035:GLY:O	2.50	0.42
1:P:749:CYS:O	1:P:753:LEU:N	2.52	0.42
1:A:60:SER:OG	1:A:61:ASN:N	2.52	0.42
1:A:328:ARG:HD3	1:A:543:PHE:HE1	1.83	0.42
1:A:569:ILE:H	1:A:569:ILE:HG13	1.63	0.42
1:A:712:ILE:HG13	1:A:1075:PHE:CB	2.30	0.42
1:P:457:ARG:HE	1:P:461:LEU:HD12	1.85	0.42
3:L:65:SER:OG	3:L:67:ASP:N	2.53	0.42
2:B:62:ARG:HH12	2:B:103:ARG:HH12	1.67	0.42
3:C:41:TRP:HB2	3:C:54:ILE:HB	2.00	0.42

Continued on next page...

Continued from previous page...

Atom-1	Atom-2	Interatomic distance (Å)	Clash overlap (Å)
1:A:1086:LYS:HB2	1:A:1122:VAL:HG13	2.01	0.42
1:D:127:VAL:HG23	1:D:129:LYS:HZ3	1.84	0.42
1:D:356:LYS:NZ	1:D:357:ARG:O	2.50	0.42
1:D:712:ILE:HD13	1:D:712:ILE:HG21	1.79	0.42
1:A:423:TYR:HA	1:A:461:LEU:HD22	2.02	0.42
1:D:196:ASN:ND2	1:D:235:ILE:HG21	2.34	0.42
1:P:396:TYR:O	1:P:514:SER:OG	2.34	0.42
1:P:822:LEU:HD13	1:P:1056:ALA:HB2	2.01	0.42
2:E:49:VAL:O	2:E:64:SER:OG	2.22	0.42
1:A:393:THR:OG1	1:A:516:GLU:O	2.36	0.42
1:A:466:ARG:HG2	1:A:468:ILE:HG23	2.02	0.42
1:A:916:LEU:O	1:P:1129:VAL:HG22	2.19	0.42
1:A:55:PHE:HD2	1:A:275:PHE:CG	2.38	0.42
1:A:806:LEU:HD21	1:A:879:ALA:HB3	2.01	0.42
1:D:712:ILE:CD1	1:D:1094:VAL:HG11	2.46	0.42
1:P:986:PRO:HD2	1:P:987:PRO:HD3	2.02	0.42
1:A:439:ASN:HA	1:A:442:ASP:HB2	2.01	0.42
1:A:917:TYR:CB	1:P:1129:VAL:HG21	2.43	0.42
1:D:669:GLY:N	1:P:864:LEU:O	2.49	0.42
1:D:906:PHE:CZ	1:D:915:VAL:HB	2.55	0.42
3:C:30:ILE:HG23	3:C:39:VAL:HB	2.02	0.42
1:A:474:GLN:OE1	2:E:107:TYR:OH	2.29	0.41
1:D:126:VAL:HG12	1:D:128:ILE:HG13	2.02	0.41
1:D:498:GLN:HG3	1:D:500:THR:H	1.85	0.41
1:P:394:ASN:HD22	1:P:516:GLU:HB3	1.85	0.41
1:A:59:PHE:HD2	1:A:293:LEU:HD21	1.84	0.41
1:A:1135:ASN:OD1	1:A:1136:THR:N	2.53	0.41
1:D:518:LEU:HD23	1:D:518:LEU:HA	1.89	0.41
1:D:1089:PHE:HE2	1:D:1123:SER:OG	2.03	0.41
1:D:1094:VAL:HG13	1:P:900:MET:HE1	2.02	0.41
3:L:60:ARG:NH1	3:L:69:PHE:O	2.52	0.41
1:A:132:GLU:H	1:A:166:CYS:HB2	1.85	0.41
1:A:331:ASN:O	1:A:333:THR:CG2	2.56	0.41
1:A:806:LEU:HD23	1:A:806:LEU:HA	1.94	0.41
1:P:464:PHE:HB3	3:C:36:GLY:HA2	2.01	0.41
1:P:567:ARG:HD3	1:P:571:ASP:HA	2.03	0.41
1:D:1081:ILE:HG23	1:D:1135:ASN:HD21	1.85	0.41
1:P:330:PRO:HA	1:P:580:GLN:HG2	2.01	0.41
1:P:800:PHE:CD2	1:P:800:PHE:N	2.89	0.41
1:P:1116:THR:OG1	1:P:1118:ASP:OD1	2.34	0.41
1:A:452:ARG:HB3	1:A:492:LEU:HB3	2.02	0.41

Continued on next page...

Continued from previous page...

Atom-1	Atom-2	Interatomic distance (Å)	Clash overlap (Å)
1:D:716:THR:HG21	1:D:1073:LYS:HE2	2.03	0.41
1:A:328:ARG:HE	1:A:578:ASP:HB2	1.85	0.41
1:A:416:GLY:H	1:A:419:ALA:HB3	1.86	0.41
1:P:290:ASP:O	1:P:297:SER:HB3	2.21	0.41
1:P:1068:VAL:HA	1:P:1069:PRO:HD3	1.91	0.41
2:E:58:ASP:N	2:E:58:ASP:OD1	2.53	0.41
1:A:707:TYR:HE1	1:D:897:PRO:HA	1.85	0.41
1:A:723:THR:O	1:A:1064:HIS:N	2.51	0.41
1:D:526:GLY:N	1:D:527:PRO:HD3	2.33	0.41
1:P:393:THR:OG1	1:P:516:GLU:O	2.31	0.41
1:P:800:PHE:HB3	1:P:802:PHE:CD1	2.55	0.41
1:P:896:ILE:HG13	1:P:901:GLN:HB2	2.02	0.41
1:A:194:PHE:HE1	1:A:203:ILE:HG23	1.86	0.41
1:D:106:PHE:CD1	1:D:238:PHE:HB2	2.56	0.41
1:D:452:ARG:HB3	1:D:492:LEU:HB3	2.02	0.41
1:D:722:VAL:HG22	1:D:1065:VAL:HG22	2.03	0.41
1:D:1128:VAL:O	1:D:1128:VAL:CG1	2.67	0.41
1:P:34:ARG:HH21	1:P:217:PRO:HG2	1.85	0.41
1:P:379:CYS:HA	1:P:432:CYS:HA	2.02	0.41
1:P:822:LEU:HD22	1:P:945:LEU:HD11	2.02	0.41
2:H:38:VAL:HB	2:H:99:TYR:HB2	2.03	0.41
1:A:339:GLY:O	1:A:343:ASN:N	2.54	0.41
1:A:707:TYR:HE2	1:D:796:ASP:OD1	2.04	0.41
1:D:707:TYR:HE2	1:P:796:ASP:OD1	2.04	0.41
1:D:731:MET:HG3	1:D:1018:ILE:HG13	2.03	0.41
2:H:102:ARG:HB3	2:H:114:VAL:HB	2.03	0.41
2:E:20:LYS:HG3	2:E:86:GLN:HB2	2.02	0.41
1:A:802:PHE:HD1	1:A:805:ILE:HB	1.86	0.40
1:A:883:THR:O	1:A:896:ILE:N	2.54	0.40
1:D:405:ASP:N	1:D:504:GLY:O	2.53	0.40
1:D:428:ASP:OD1	1:D:428:ASP:N	2.47	0.40
1:D:712:ILE:HG23	1:P:895:GLN:O	2.20	0.40
1:D:800:PHE:HB2	1:D:802:PHE:CE2	2.57	0.40
1:D:805:ILE:HG23	1:D:1054:GLN:HE22	1.86	0.40
1:P:1037:SER:OG	1:P:1043:CYS:SG	2.72	0.40
2:B:97:ILE:HA	2:B:120:THR:HG22	2.04	0.40
1:P:213:VAL:O	1:P:213:VAL:CG1	2.68	0.40
1:P:530:SER:O	1:P:530:SER:OG	2.32	0.40
1:D:716:THR:HG22	1:D:1073:LYS:HE2	2.02	0.40
1:D:905:ARG:HD3	1:D:1050:MET:HB3	2.03	0.40
1:D:985:ASP:OD1	1:D:985:ASP:N	2.54	0.40

Continued on next page...

Continued from previous page...

Atom-1	Atom-2	Interatomic distance (Å)	Clash overlap (Å)
1:P:985:ASP:HB2	1:P:987:PRO:HD2	2.02	0.40
2:E:2:VAL:HG21	2:E:102:ARG:HE	1.87	0.40
2:E:41:LYS:HB3	2:E:44:LYS:HD3	2.03	0.40
1:D:303:LEU:HD12	1:D:308:VAL:HG22	2.04	0.40
1:D:822:LEU:HD22	1:D:945:LEU:HD21	2.03	0.40
2:H:15:PRO:HG3	2:H:123:VAL:HG21	2.03	0.40
2:E:13:LYS:HD2	2:E:13:LYS:HA	1.81	0.40
1:A:903:ALA:HB1	1:A:913:GLN:HG3	2.04	0.40
1:D:1023:ASN:O	1:D:1027:THR:OG1	2.33	0.40
1:P:994:ASP:HA	1:P:997:ILE:HG22	2.02	0.40
2:E:15:PRO:HG3	2:E:123:VAL:HG21	2.03	0.40
2:E:62:ARG:HB3	3:F:105:ASN:HD21	1.87	0.40

There are no symmetry-related clashes.

5.3 Torsion angles [i](#)

5.3.1 Protein backbone [i](#)

In the following table, the Percentiles column shows the percent Ramachandran outliers of the chain as a percentile score with respect to all PDB entries followed by that with respect to all EM entries.

The Analysed column shows the number of residues for which the backbone conformation was analysed, and the total number of residues.

Mol	Chain	Analysed	Favoured	Allowed	Outliers	Percentiles	
1	A	942/1259 (75%)	890 (94%)	47 (5%)	5 (0%)	29	62
1	D	937/1259 (74%)	884 (94%)	53 (6%)	0	100	100
1	P	925/1259 (74%)	851 (92%)	67 (7%)	7 (1%)	19	52
2	B	119/121 (98%)	116 (98%)	3 (2%)	0	100	100
2	E	119/121 (98%)	117 (98%)	2 (2%)	0	100	100
2	H	119/121 (98%)	113 (95%)	4 (3%)	2 (2%)	9	37
3	C	108/110 (98%)	98 (91%)	10 (9%)	0	100	100
3	F	108/110 (98%)	99 (92%)	9 (8%)	0	100	100
3	L	108/110 (98%)	99 (92%)	9 (8%)	0	100	100
All	All	3485/4470 (78%)	3267 (94%)	204 (6%)	14 (0%)	38	67

All (14) Ramachandran outliers are listed below:

Mol	Chain	Res	Type
1	A	332	ILE
1	A	334	ASN
1	P	800	PHE
1	P	801	ASN
2	H	107	TYR
2	H	111	GLY
1	P	802	PHE
1	P	803	SER
1	A	333	THR
1	A	528	LYS
1	P	806	LEU
1	P	799	GLY
1	P	805	ILE
1	A	526	GLY

5.3.2 Protein sidechains [i](#)

In the following table, the Percentiles column shows the percent sidechain outliers of the chain as a percentile score with respect to all PDB entries followed by that with respect to all EM entries.

The Analysed column shows the number of residues for which the sidechain conformation was analysed, and the total number of residues.

Mol	Chain	Analysed	Rotameric	Outliers	Percentiles	
1	A	839/1091 (77%)	836 (100%)	3 (0%)	91	95
1	D	841/1091 (77%)	834 (99%)	7 (1%)	81	89
1	P	840/1091 (77%)	831 (99%)	9 (1%)	73	85
2	B	102/102 (100%)	102 (100%)	0	100	100
2	E	102/102 (100%)	102 (100%)	0	100	100
2	H	102/102 (100%)	100 (98%)	2 (2%)	55	76
3	C	88/88 (100%)	88 (100%)	0	100	100
3	F	88/88 (100%)	88 (100%)	0	100	100
3	L	88/88 (100%)	88 (100%)	0	100	100
All	All	3090/3843 (80%)	3069 (99%)	21 (1%)	84	90

All (21) residues with a non-rotameric sidechain are listed below:

Mol	Chain	Res	Type
1	A	529	LYS
1	A	979	ASP
1	A	1126	CYS
1	D	131	CYS
1	D	361	CYS
1	D	391	CYS
1	D	538	CYS
1	D	590	CYS
1	D	738	CYS
1	D	820	ASP
1	P	361	CYS
1	P	525	CYS
1	P	590	CYS
1	P	718	PHE
1	P	800	PHE
1	P	801	ASN
1	P	802	PHE
1	P	1082	CYS
1	P	1126	CYS
2	H	107	TYR
2	H	109	SER

Sometimes sidechains can be flipped to improve hydrogen bonding and reduce clashes. All (46) such sidechains are listed below:

Mol	Chain	Res	Type
1	A	710	ASN
1	A	901	GLN
1	A	920	GLN
1	A	978	ASN
1	A	1002	GLN
1	A	1011	GLN
1	A	1023	ASN
1	A	1054	GLN
1	A	1119	ASN
1	D	196	ASN
1	D	211	ASN
1	D	388	ASN
1	D	901	GLN
1	D	919	ASN
1	D	935	GLN
1	D	978	ASN
1	D	1023	ASN
1	D	1054	GLN

Continued on next page...

Continued from previous page...

Mol	Chain	Res	Type
1	P	125	ASN
1	P	360	ASN
1	P	370	ASN
1	P	394	ASN
1	P	544	ASN
1	P	774	GLN
1	P	804	GLN
1	P	913	GLN
1	P	935	GLN
1	P	978	ASN
1	P	1002	GLN
1	P	1023	ASN
1	P	1054	GLN
1	P	1108	ASN
1	P	1113	GLN
3	L	1	GLN
3	L	29	ASN
3	L	40	ASN
3	L	105	ASN
2	B	110	HIS
3	C	29	ASN
3	C	59	GLN
3	C	88	GLN
2	E	68	GLN
2	E	110	HIS
3	F	1	GLN
3	F	29	ASN
3	F	105	ASN

5.3.3 RNA [i](#)

There are no RNA molecules in this entry.

5.4 Non-standard residues in protein, DNA, RNA chains [i](#)

There are no non-standard protein/DNA/RNA residues in this entry.

5.5 Carbohydrates [i](#)

There are no monosaccharides in this entry.

5.6 Ligand geometry [i](#)

There are no ligands in this entry.

5.7 Other polymers [i](#)

There are no such residues in this entry.

5.8 Polymer linkage issues [i](#)

There are no chain breaks in this entry.

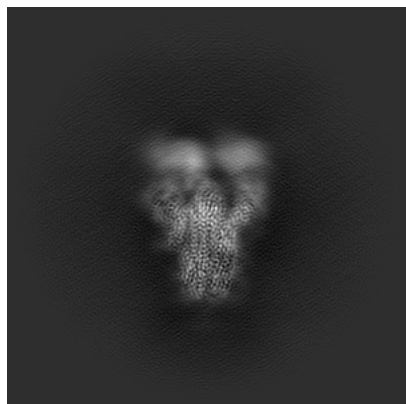
6 Map visualisation [i](#)

This section contains visualisations of the EMDB entry EMD-39546. These allow visual inspection of the internal detail of the map and identification of artifacts.

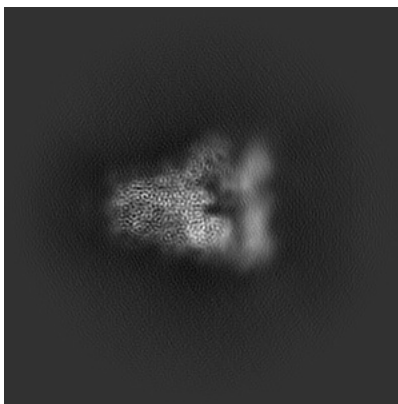
Images derived from a raw map, generated by summing the deposited half-maps, are presented below the corresponding image components of the primary map to allow further visual inspection and comparison with those of the primary map.

6.1 Orthogonal projections [i](#)

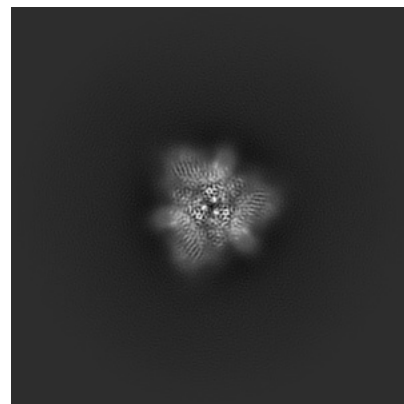
6.1.1 Primary map



X

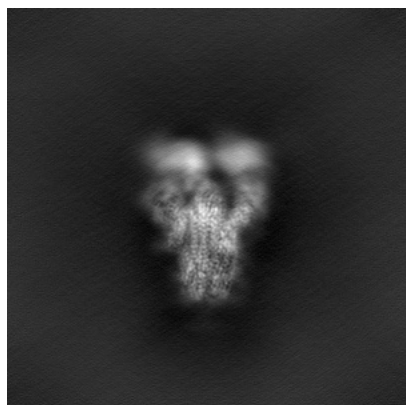


Y

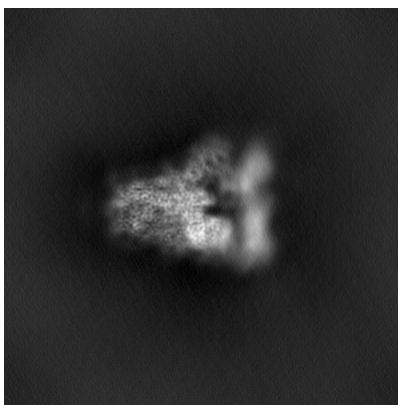


Z

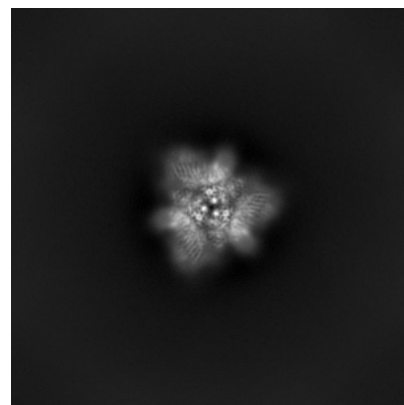
6.1.2 Raw map



X



Y

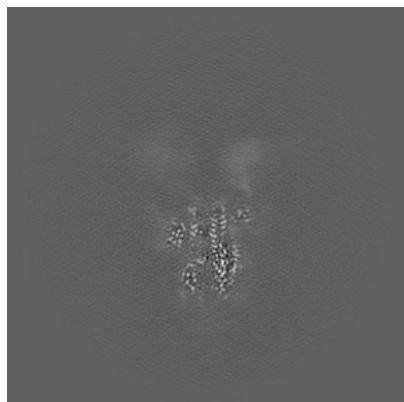


Z

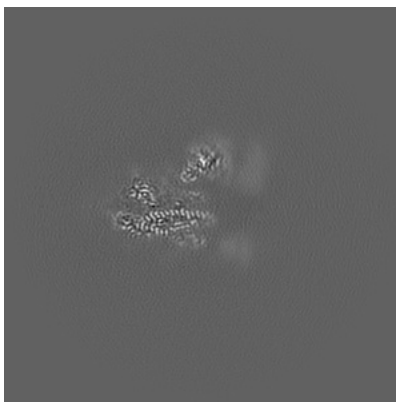
The images above show the map projected in three orthogonal directions.

6.2 Central slices [i](#)

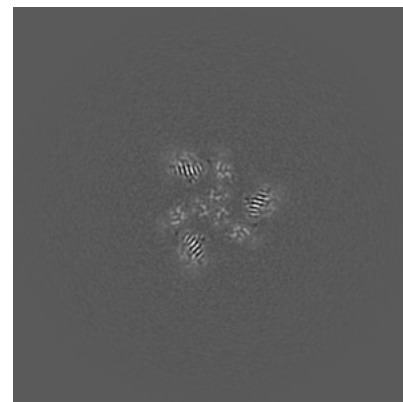
6.2.1 Primary map



X Index: 192

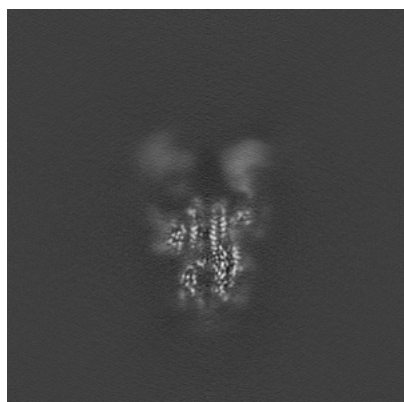


Y Index: 192

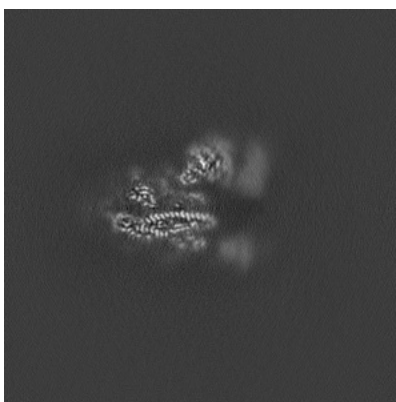


Z Index: 192

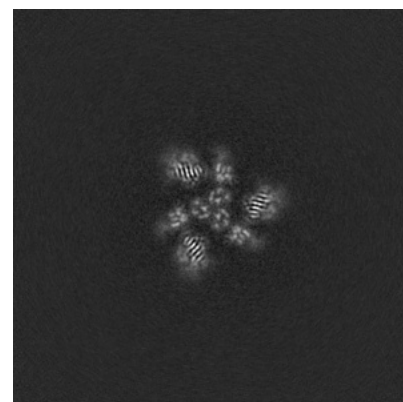
6.2.2 Raw map



X Index: 192



Y Index: 192

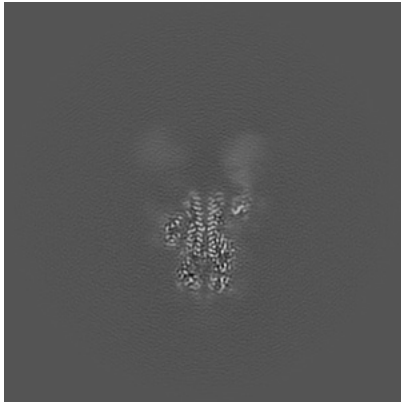


Z Index: 192

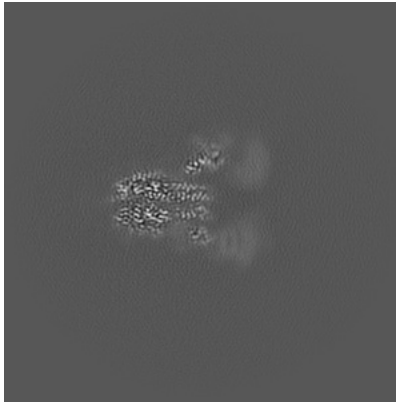
The images above show central slices of the map in three orthogonal directions.

6.3 Largest variance slices [i](#)

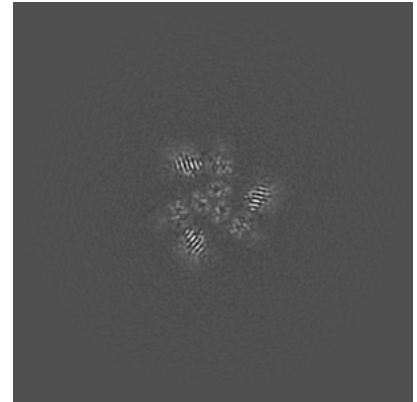
6.3.1 Primary map



X Index: 195

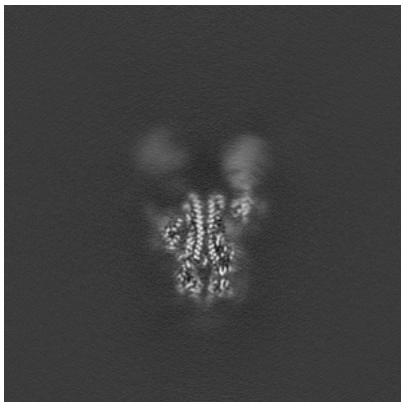


Y Index: 185

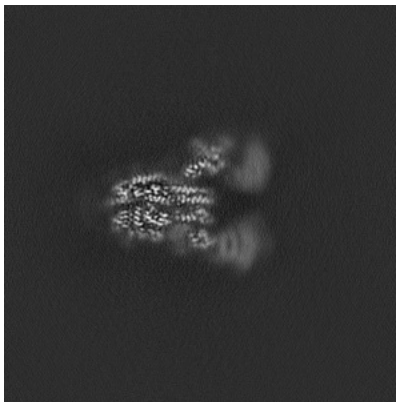


Z Index: 191

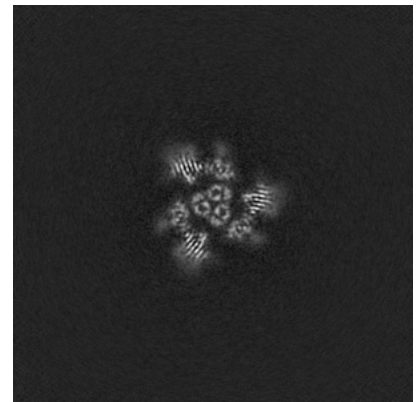
6.3.2 Raw map



X Index: 196



Y Index: 185

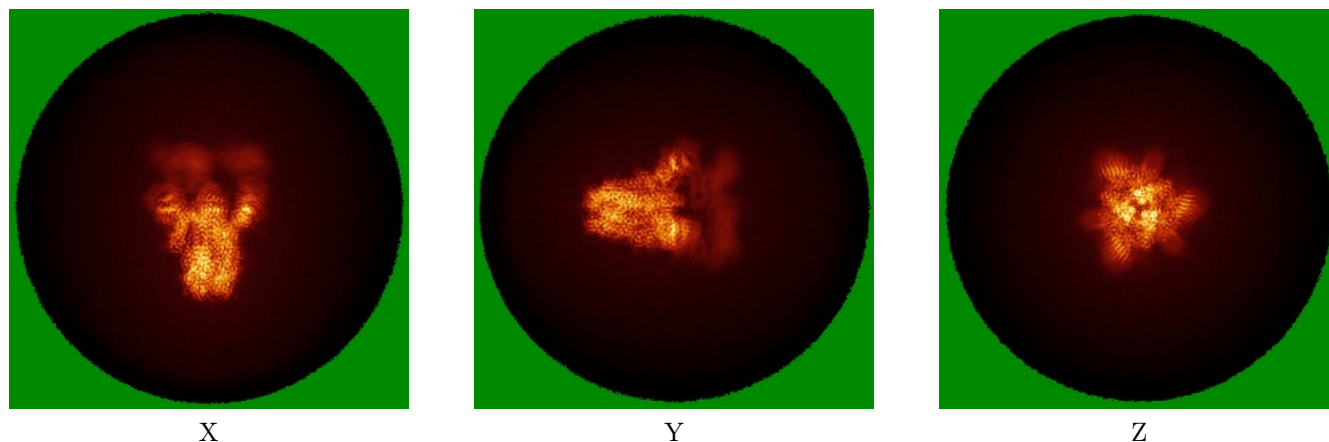


Z Index: 190

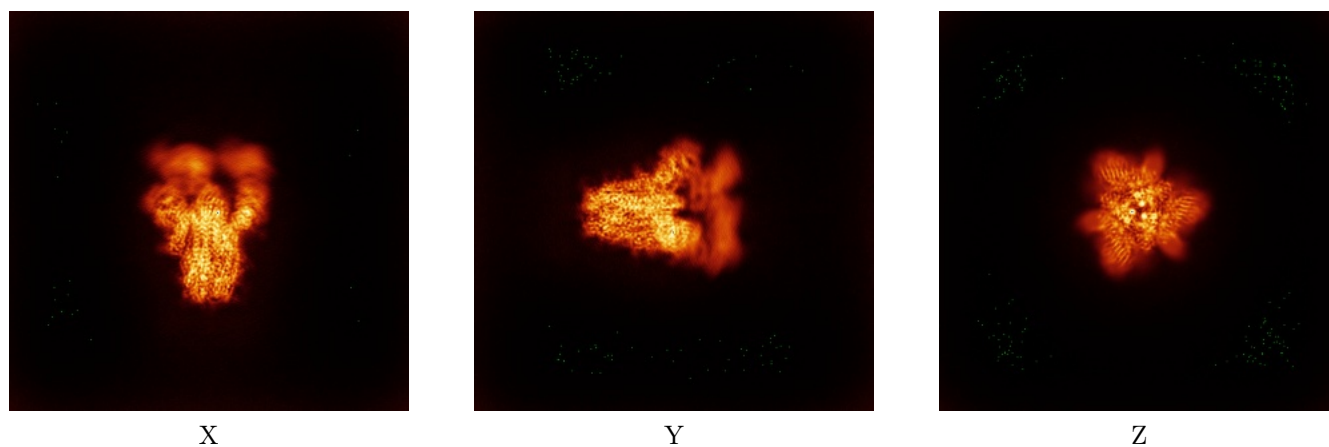
The images above show the largest variance slices of the map in three orthogonal directions.

6.4 Orthogonal standard-deviation projections (False-color) [i](#)

6.4.1 Primary map



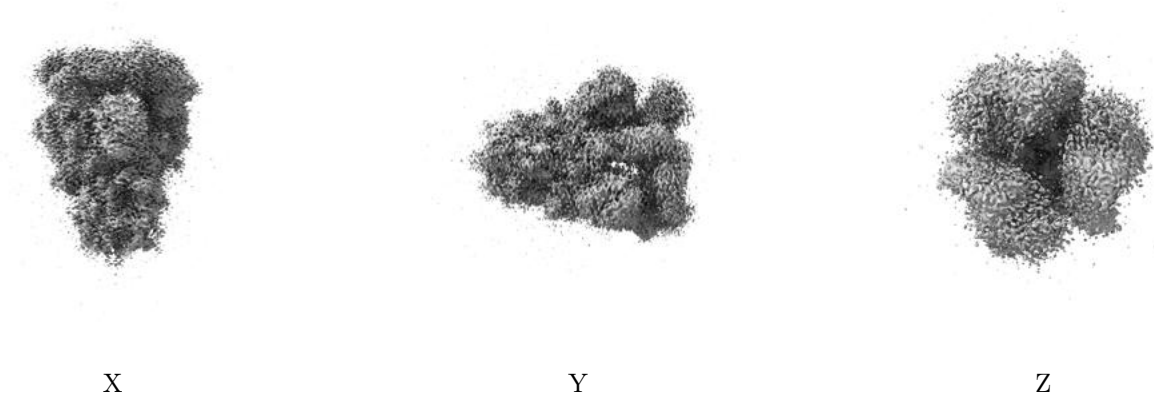
6.4.2 Raw map



The images above show the map standard deviation projections with false color in three orthogonal directions. Minimum values are shown in green, max in blue, and dark to light orange shades represent small to large values respectively.

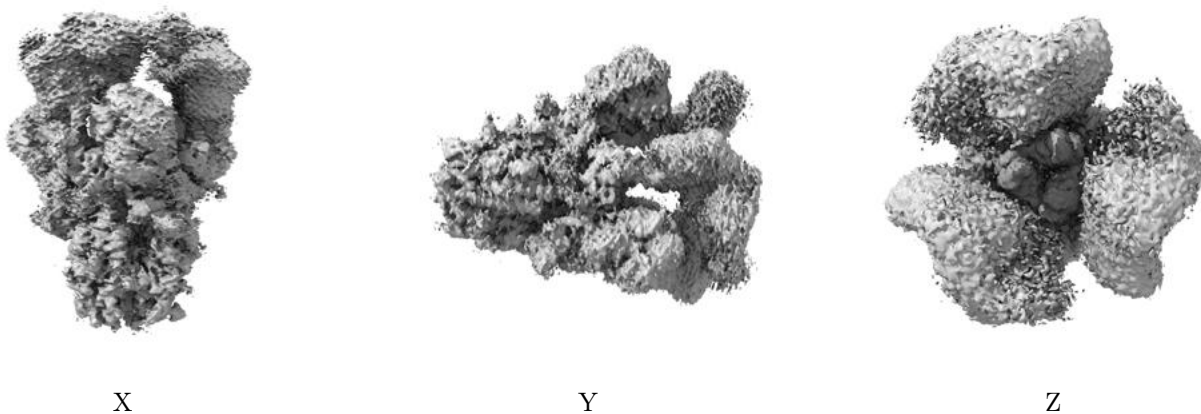
6.5 Orthogonal surface views [i](#)

6.5.1 Primary map



The images above show the 3D surface view of the map at the recommended contour level 0.22. These images, in conjunction with the slice images, may facilitate assessment of whether an appropriate contour level has been provided.

6.5.2 Raw map



These images show the 3D surface of the raw map. The raw map's contour level was selected so that its surface encloses the same volume as the primary map does at its recommended contour level.

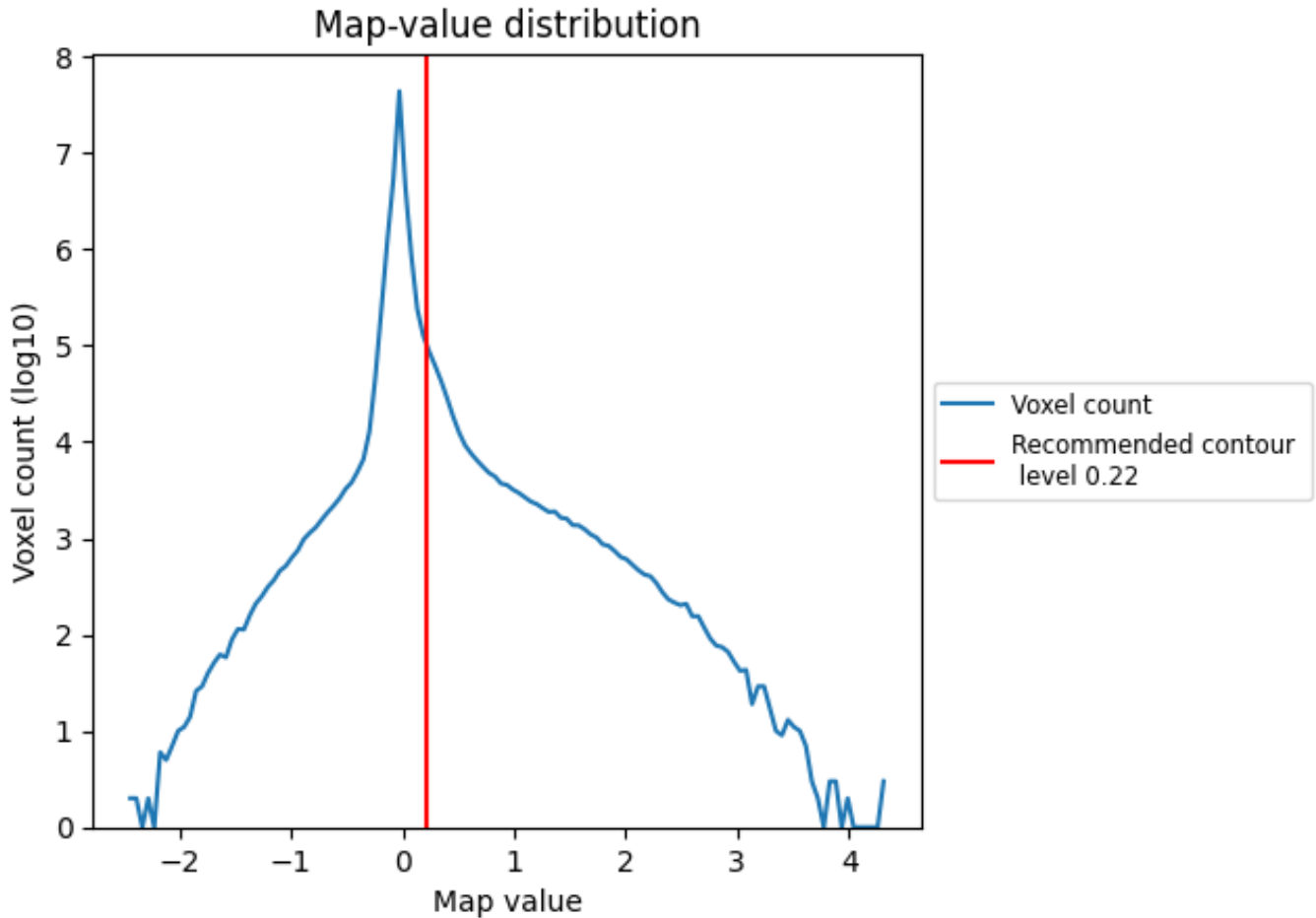
6.6 Mask visualisation [i](#)

This section was not generated. No masks/segmentation were deposited.

7 Map analysis [i](#)

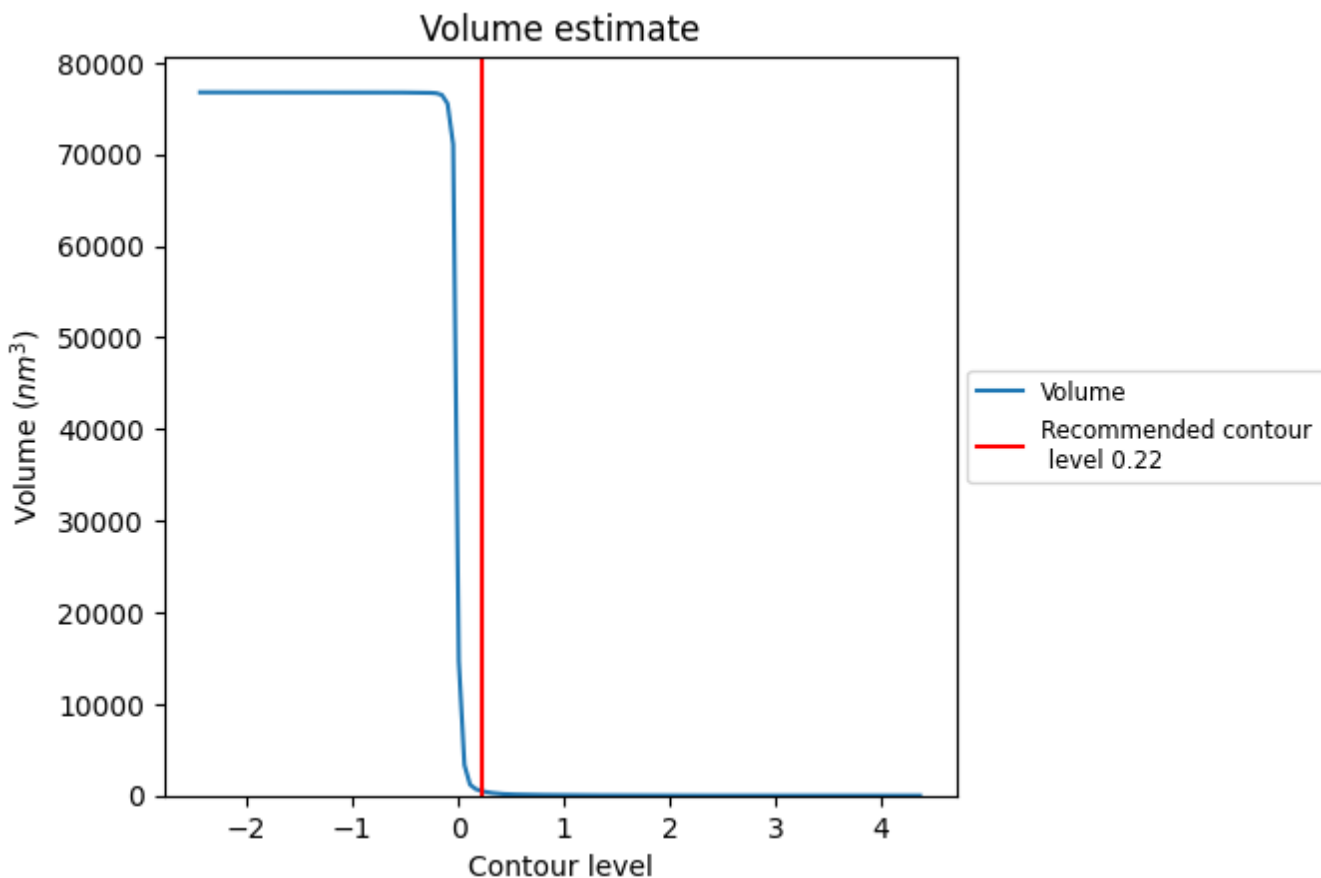
This section contains the results of statistical analysis of the map.

7.1 Map-value distribution [i](#)



The map-value distribution is plotted in 128 intervals along the x-axis. The y-axis is logarithmic. A spike in this graph at zero usually indicates that the volume has been masked.

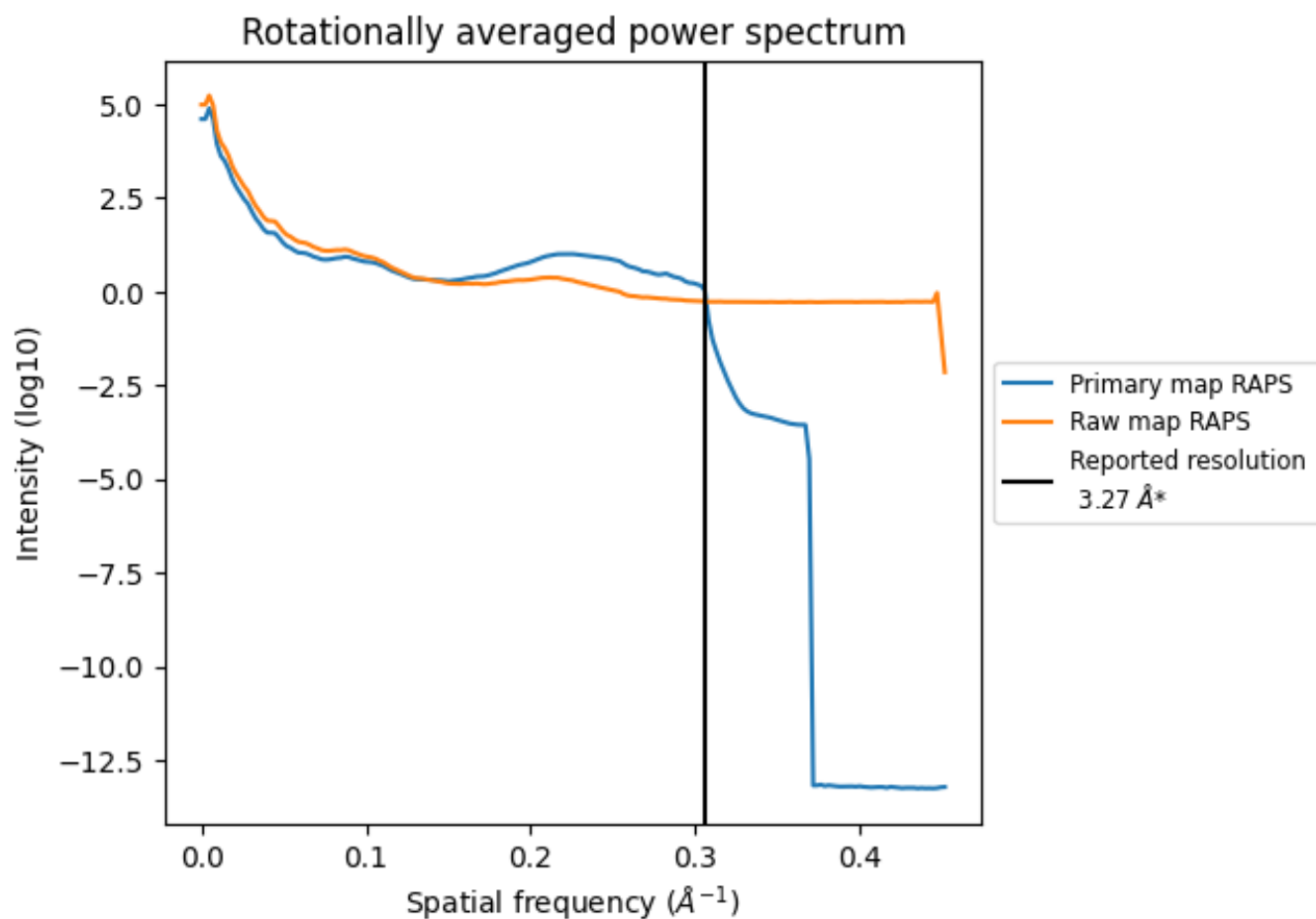
7.2 Volume estimate [i](#)



The volume at the recommended contour level is 501 nm³; this corresponds to an approximate mass of 453 kDa.

The volume estimate graph shows how the enclosed volume varies with the contour level. The recommended contour level is shown as a vertical line and the intersection between the line and the curve gives the volume of the enclosed surface at the given level.

7.3 Rotationally averaged power spectrum [i](#)

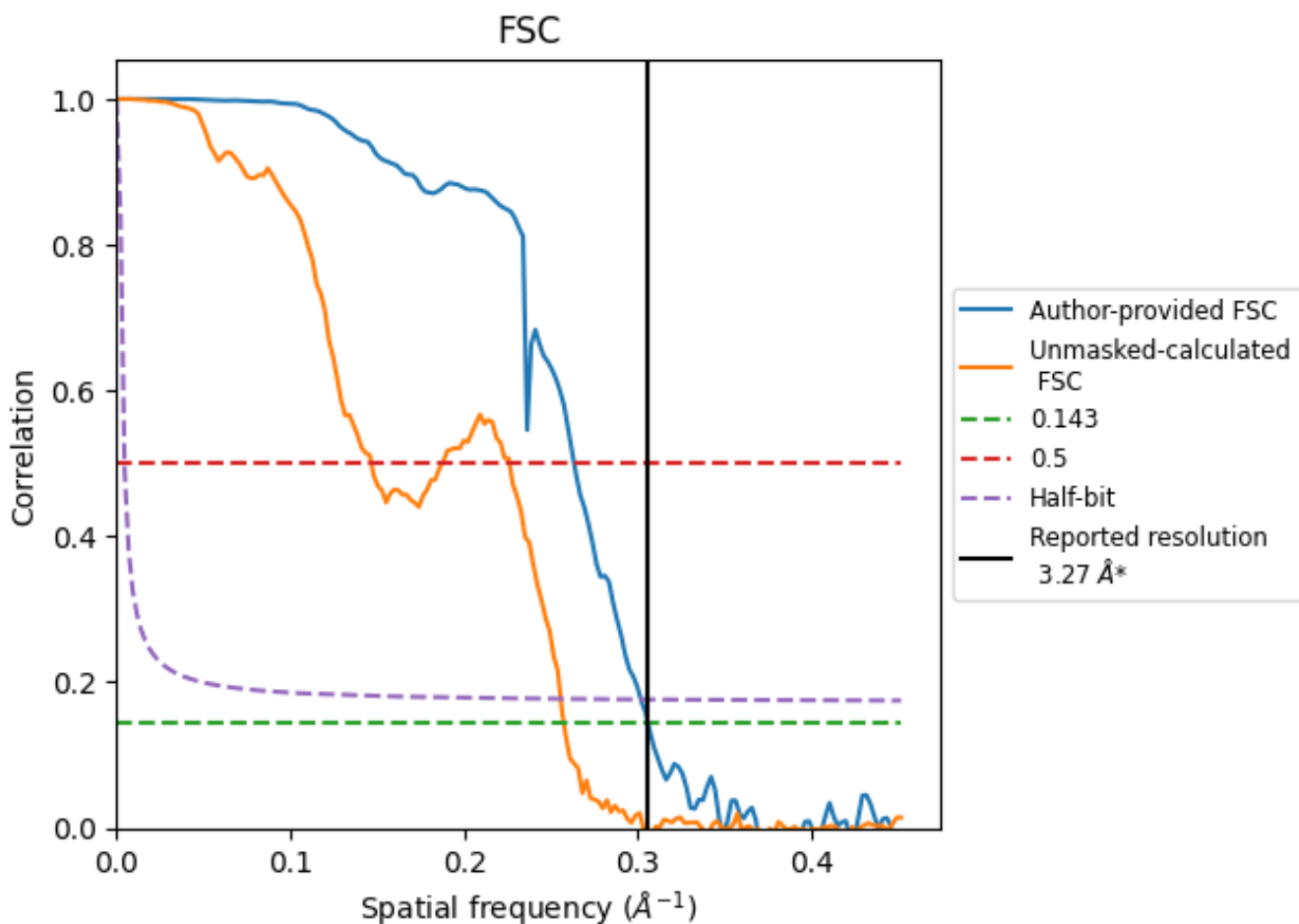


*Reported resolution corresponds to spatial frequency of 0.306 Å⁻¹

8 Fourier-Shell correlation [i](#)

Fourier-Shell Correlation (FSC) is the most commonly used method to estimate the resolution of single-particle and subtomogram-averaged maps. The shape of the curve depends on the imposed symmetry, mask and whether or not the two 3D reconstructions used were processed from a common reference. The reported resolution is shown as a black line. A curve is displayed for the half-bit criterion in addition to lines showing the 0.143 gold standard cut-off and 0.5 cut-off.

8.1 FSC [i](#)



*Reported resolution corresponds to spatial frequency of 0.306 Å⁻¹

8.2 Resolution estimates [i](#)

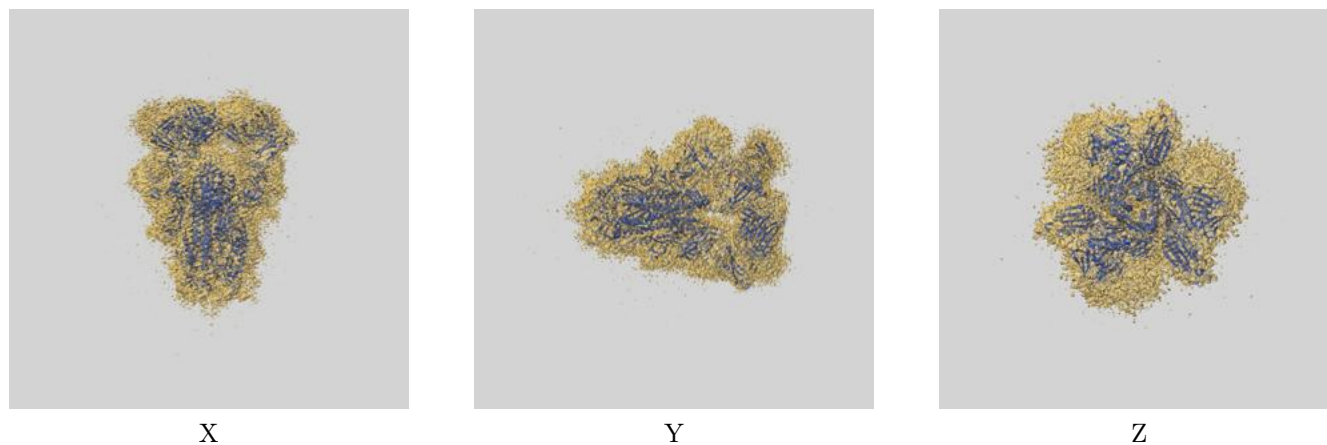
Resolution estimate (Å)	Estimation criterion (FSC cut-off)		
	0.143	0.5	Half-bit
Reported by author	3.27	-	-
Author-provided FSC curve	3.27	3.80	3.31
Unmasked-calculated*	3.88	6.81	3.91

*Resolution estimate based on FSC curve calculated by comparison of deposited half-maps. The value from deposited half-maps intersecting FSC 0.143 CUT-OFF 3.88 differs from the reported value 3.27 by more than 10 %

9 Map-model fit [i](#)

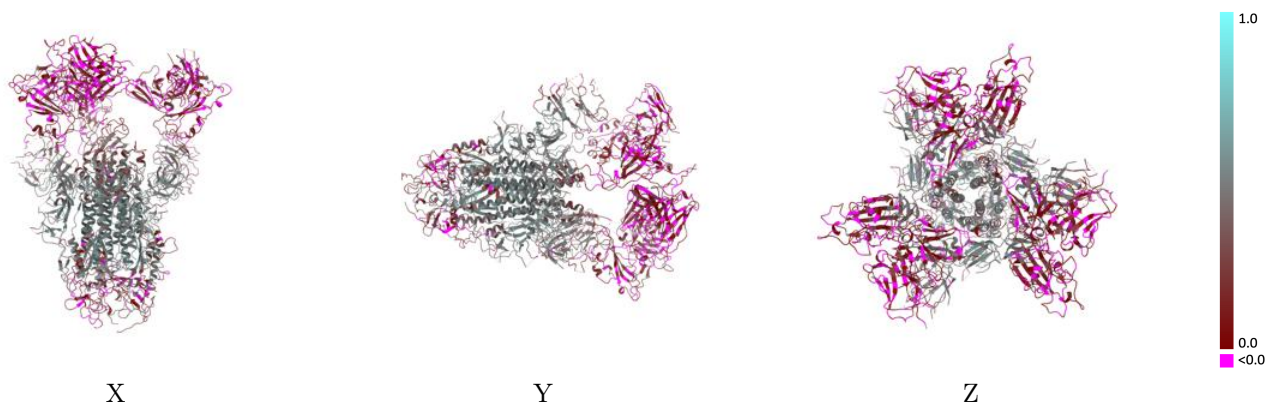
This section contains information regarding the fit between EMDB map EMD-39546 and PDB model 8YRO. Per-residue inclusion information can be found in section [3](#) on page [11](#).

9.1 Map-model overlay [i](#)



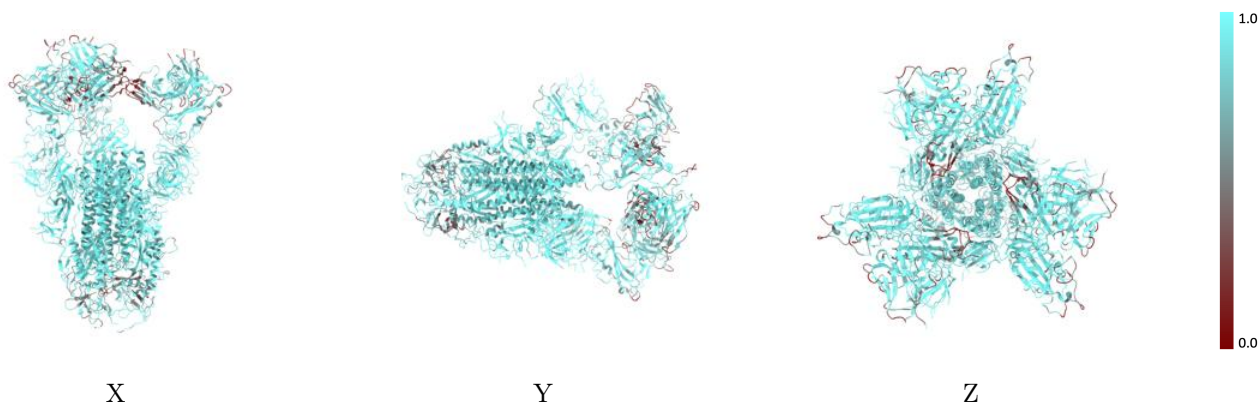
The images above show the 3D surface view of the map at the recommended contour level 0.22 at 50% transparency in yellow overlaid with a ribbon representation of the model coloured in blue. These images allow for the visual assessment of the quality of fit between the atomic model and the map.

9.2 Q-score mapped to coordinate model [\(i\)](#)



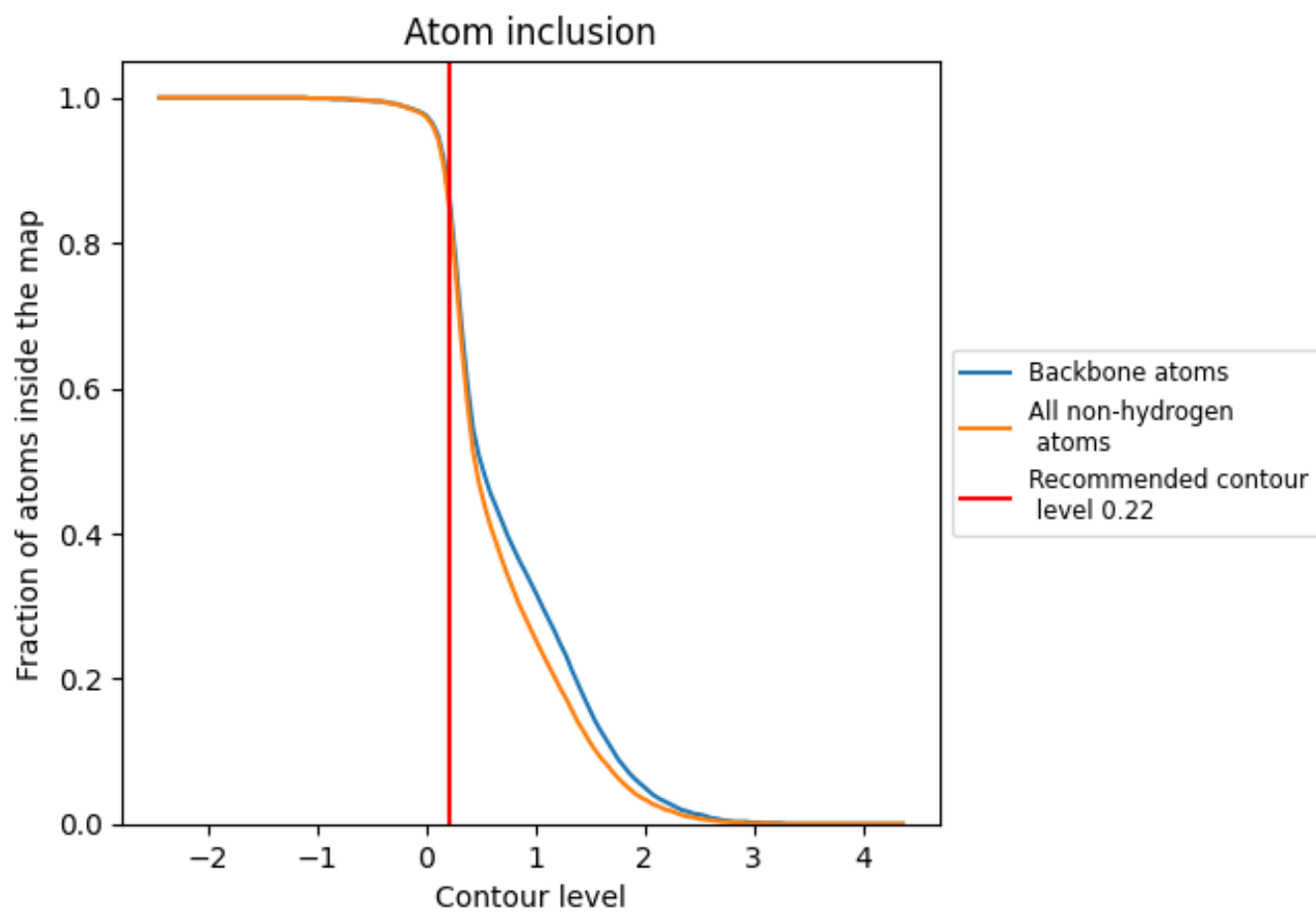
The images above show the model with each residue coloured according to its Q-score. This shows their resolvability in the map with higher Q-score values reflecting better resolvability. Please note: Q-score is calculating the resolvability of atoms, and thus high values are only expected at resolutions at which atoms can be resolved. Low Q-score values may therefore be expected for many entries.

9.3 Atom inclusion mapped to coordinate model [\(i\)](#)



The images above show the model with each residue coloured according to its atom inclusion. This shows to what extent they are inside the map at the recommended contour level (0.22).





















9.4 Atom inclusion [i](#)



At the recommended contour level, 85% of all backbone atoms, 84% of all non-hydrogen atoms, are inside the map.

9.5 Map-model fit summary

The table lists the average atom inclusion at the recommended contour level (0.22) and Q-score for the entire model and for each chain.

Chain	Atom inclusion	Q-score
All	 0.8400	 0.2830
A	 0.8690	 0.3260
B	 0.7130	 0.0410
C	 0.6390	 0.0720
D	 0.8800	 0.3380
E	 0.7070	 0.0460
F	 0.6430	 0.0650
H	 0.7050	 0.0400
L	 0.6290	 0.0670
P	 0.8830	 0.3440

